

Appendix C

Emission Factor Data Plots

February 2007

[This page intentionally left blank.]

Appendix C.1

Wood Residue Combustion

[This page intentionally left blank.]

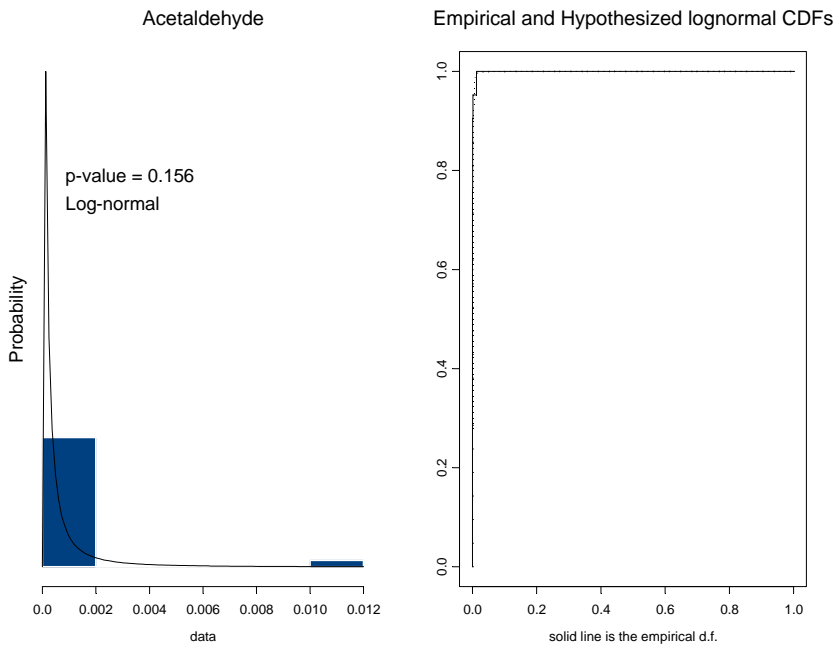
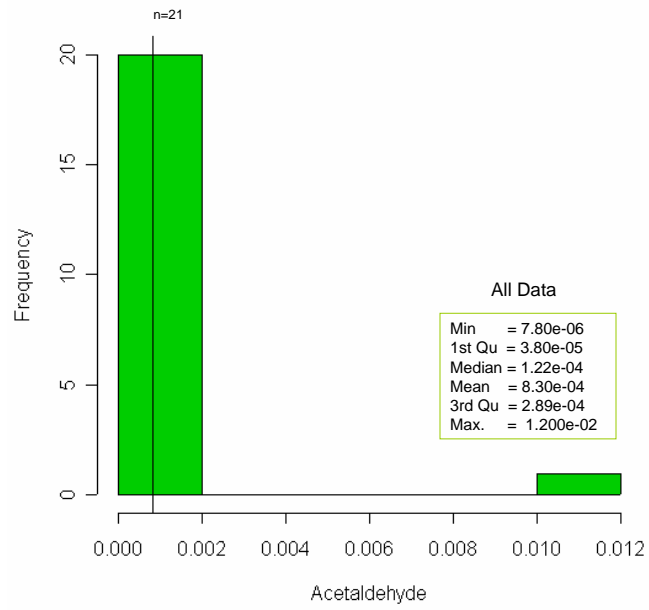


Figure C.1-1. Acetaldehyde.

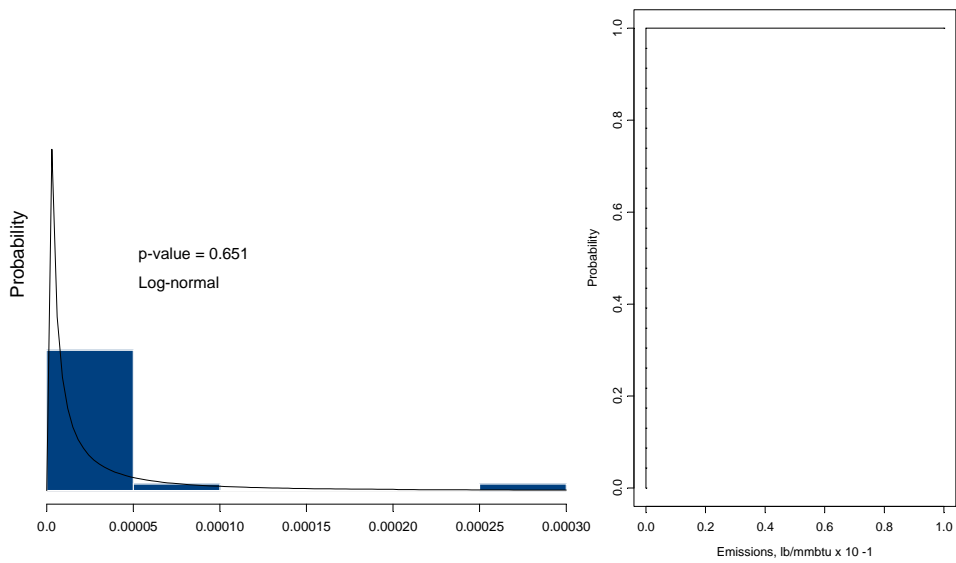
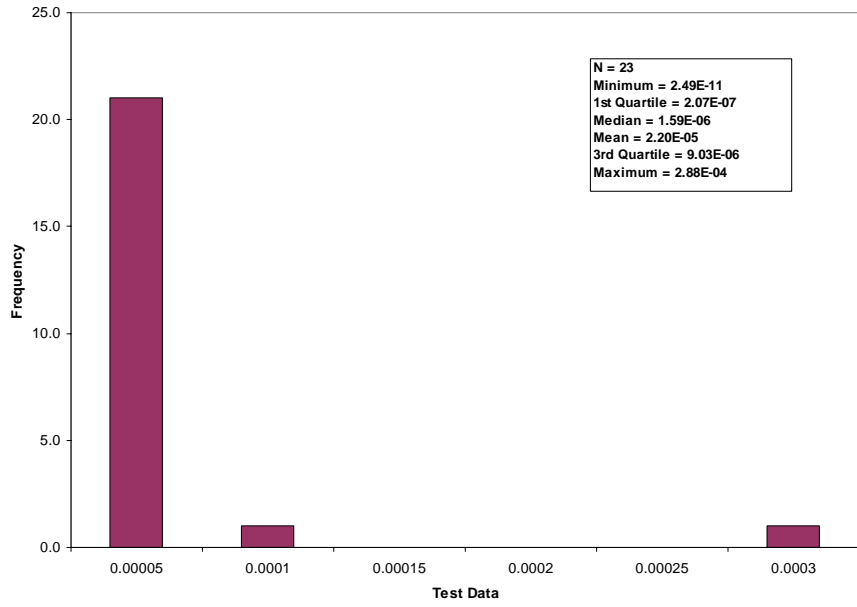


Figure C.1-2. Chapter 1.6 - Wood Residue Combustion in Boilers, Arsenic Test Data.

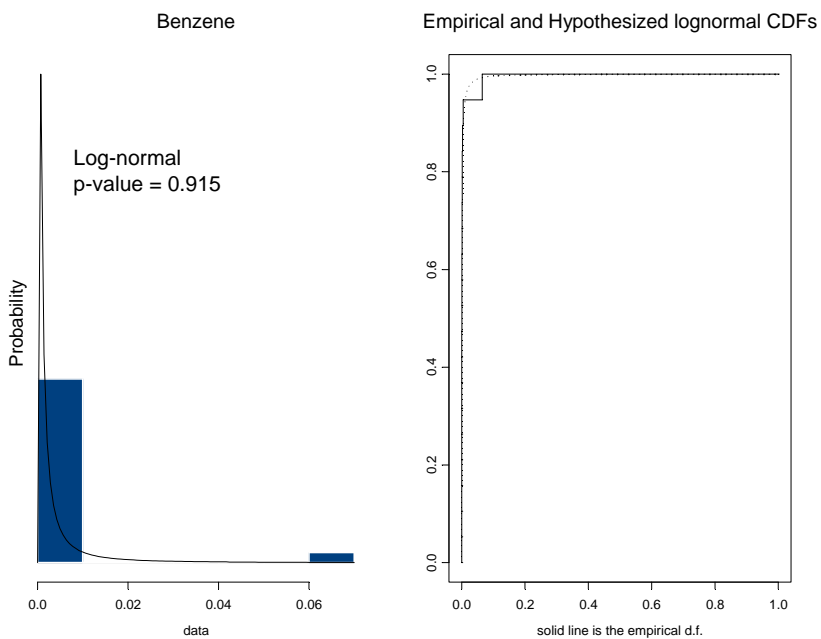
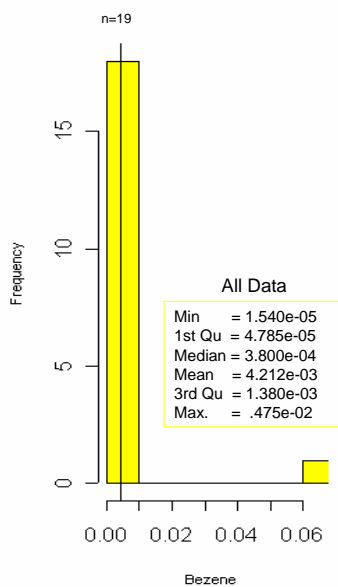


Figure C.1-3. Benzene.

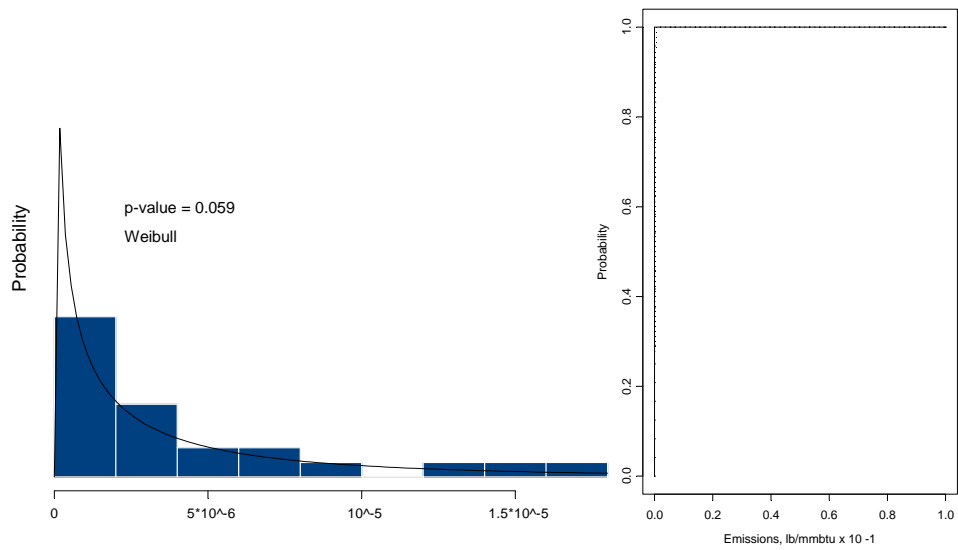
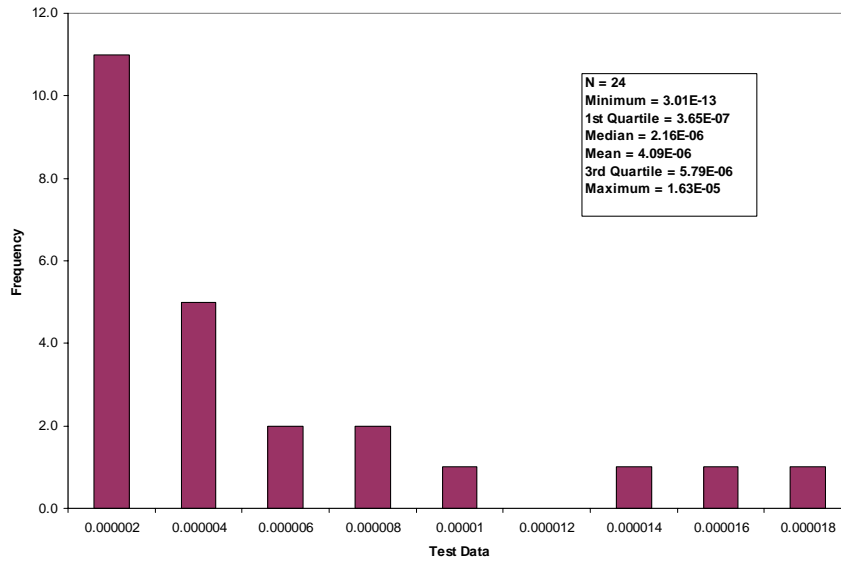


Figure C.1-4. Chapter 1.6 - Wood Residue Combustion in Boilers, Cadmium Test Data.

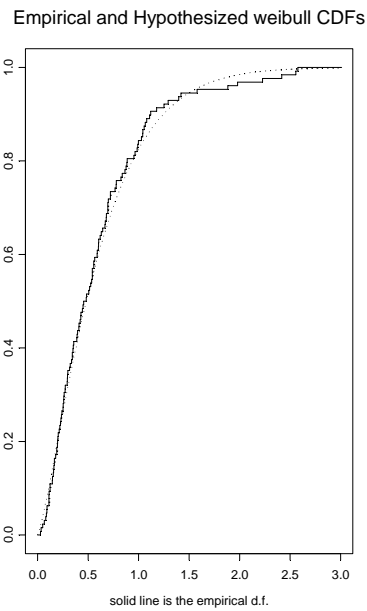
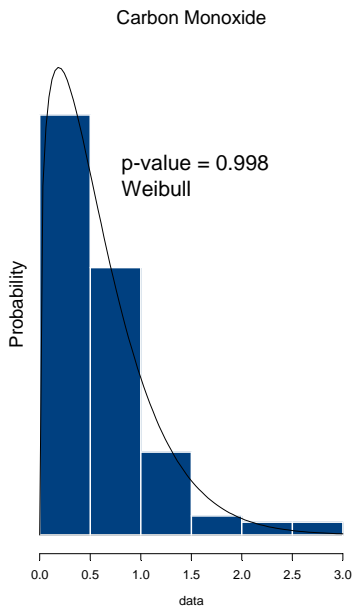
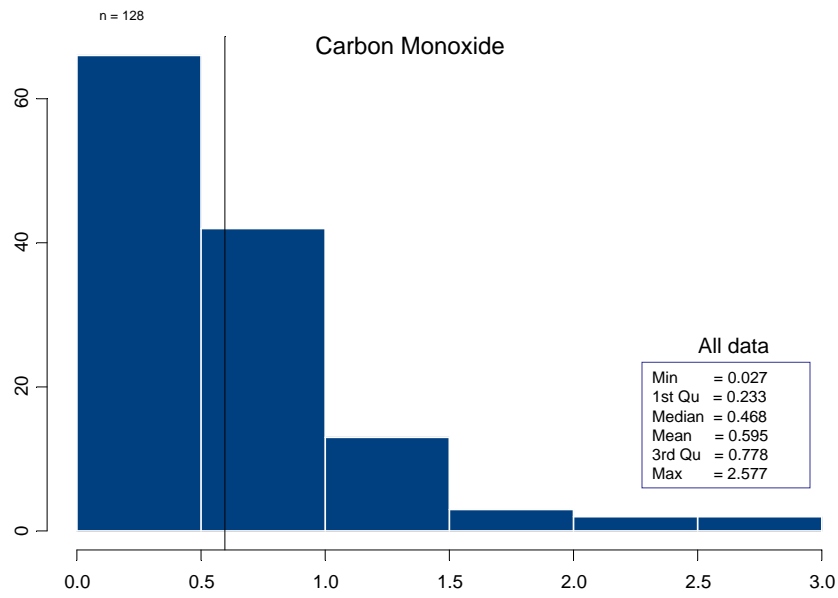


Figure C.1-5. Carbon Monoxide.

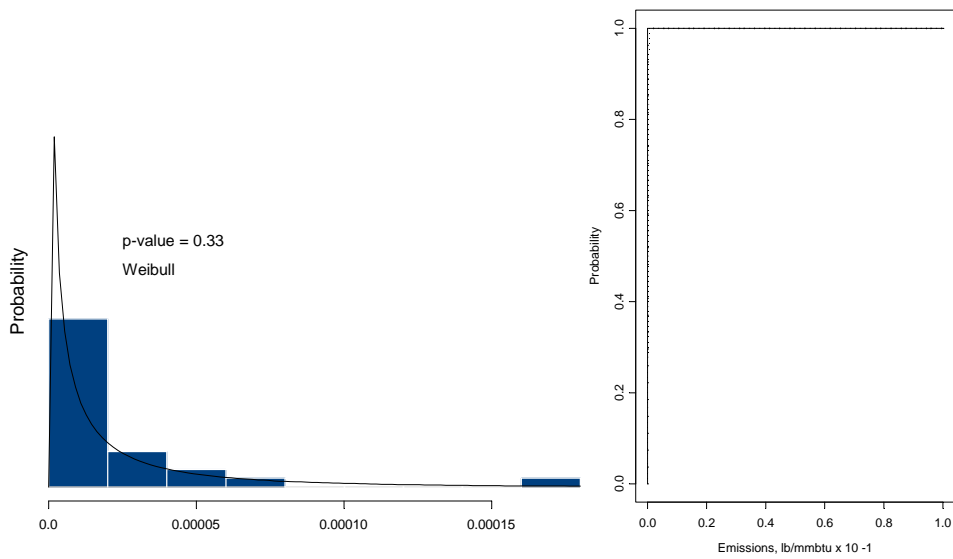
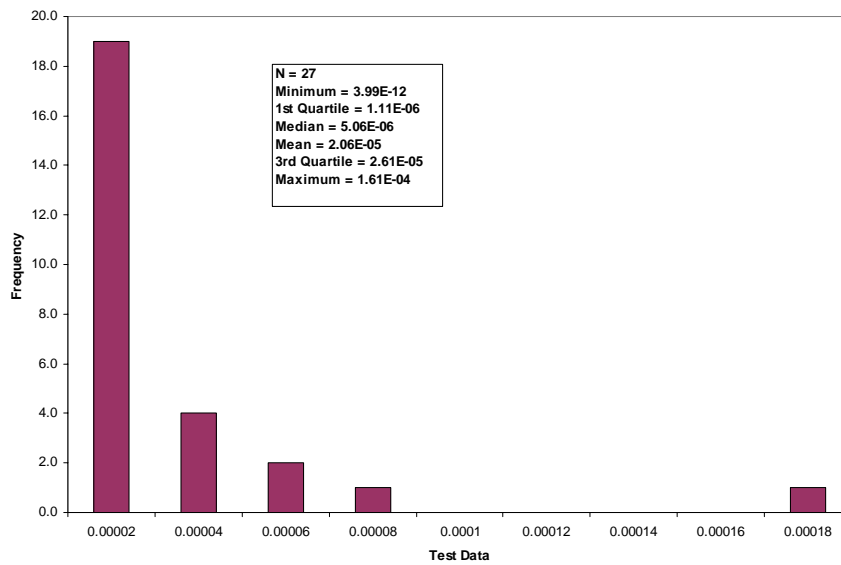


Figure C.1-6. Chapter 1.6 - Wood Residue Combustion in Boilers, Chromium Test Data.

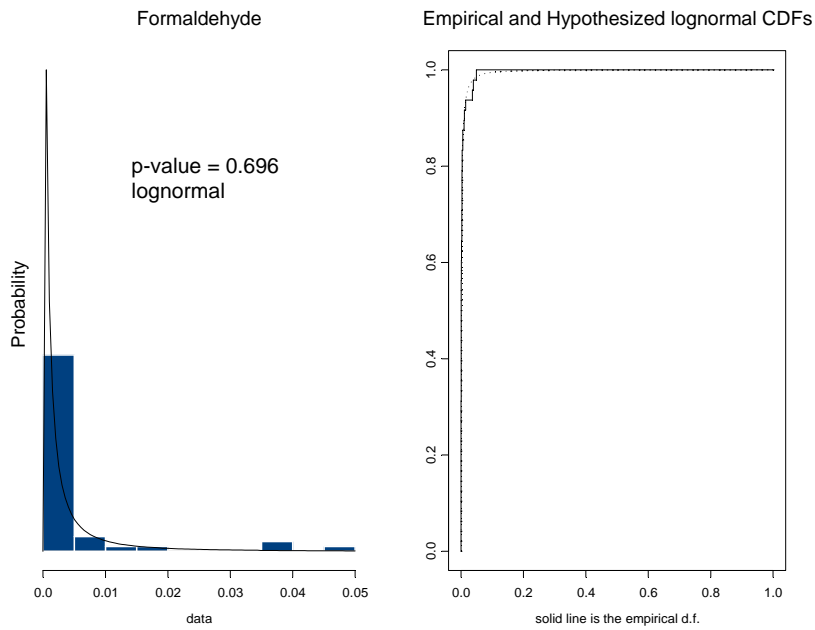
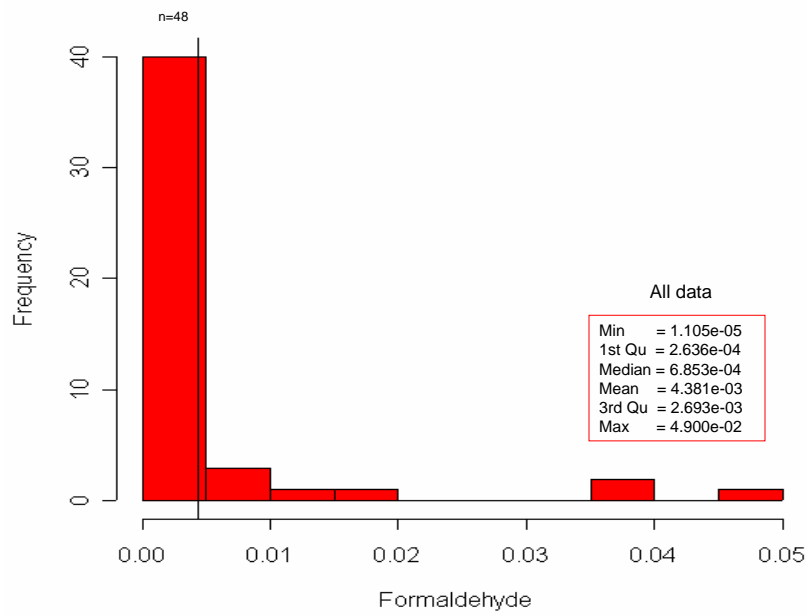


Figure C.1-7. Formaldehyde.

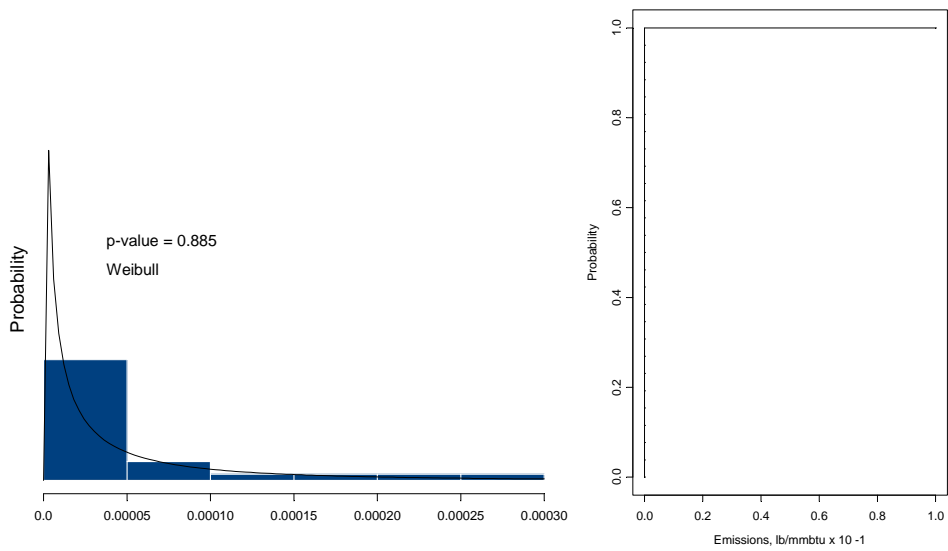
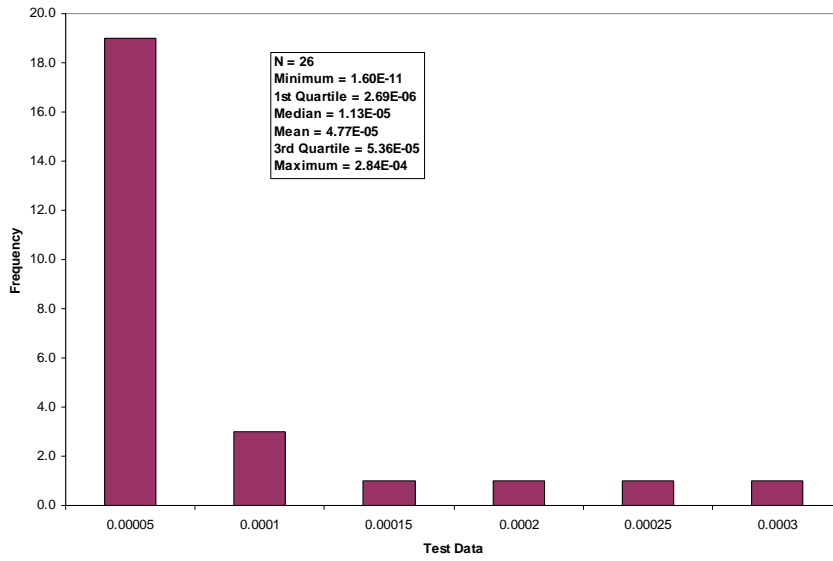


Figure C.1-8. Chapter 1.6 - Wood Residue Combustion in Boilers, Lead Test Data.

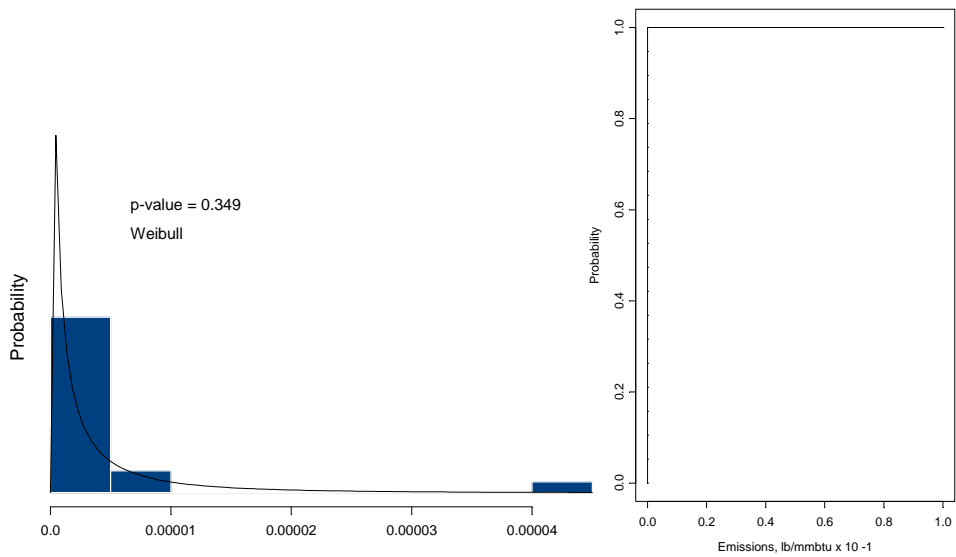
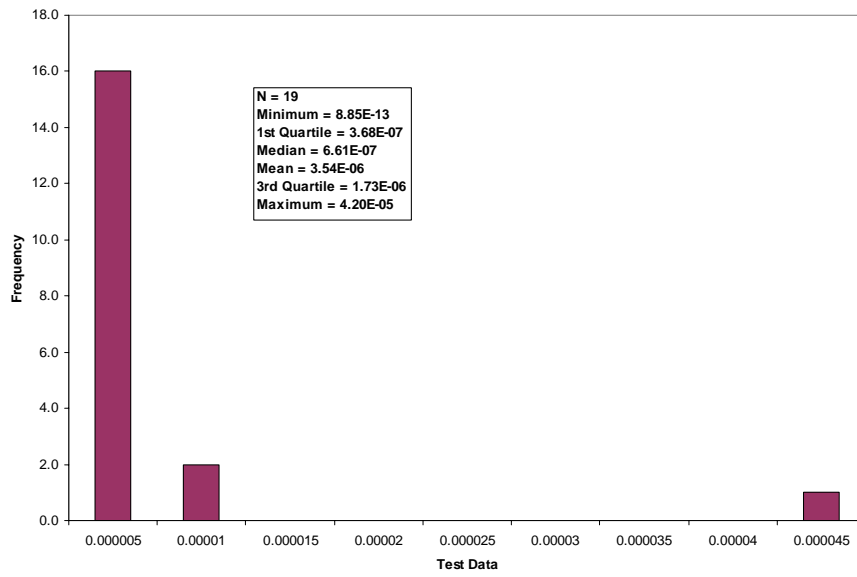


Figure C.1-9. Chapter 1.6 - Wood Residue Combustion in Boilers, Mercury Test Data.

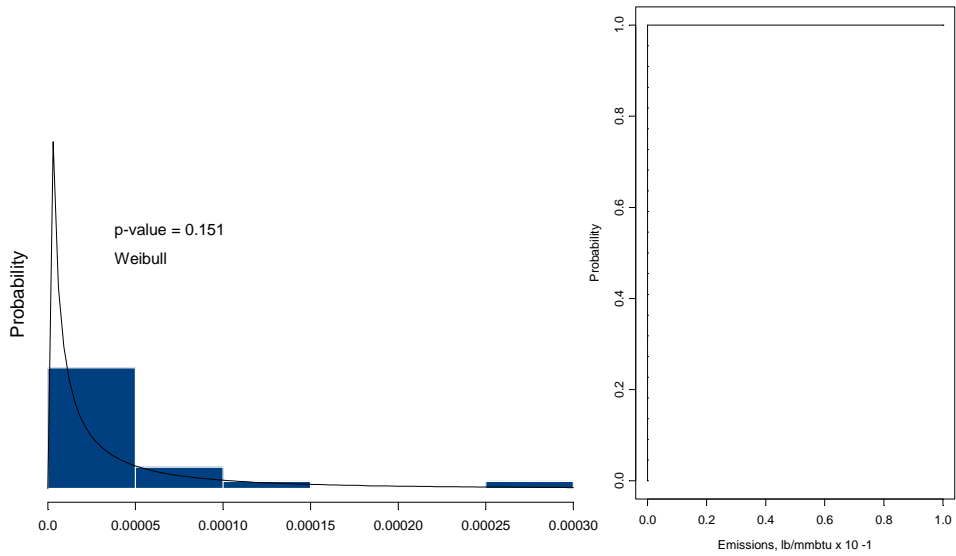
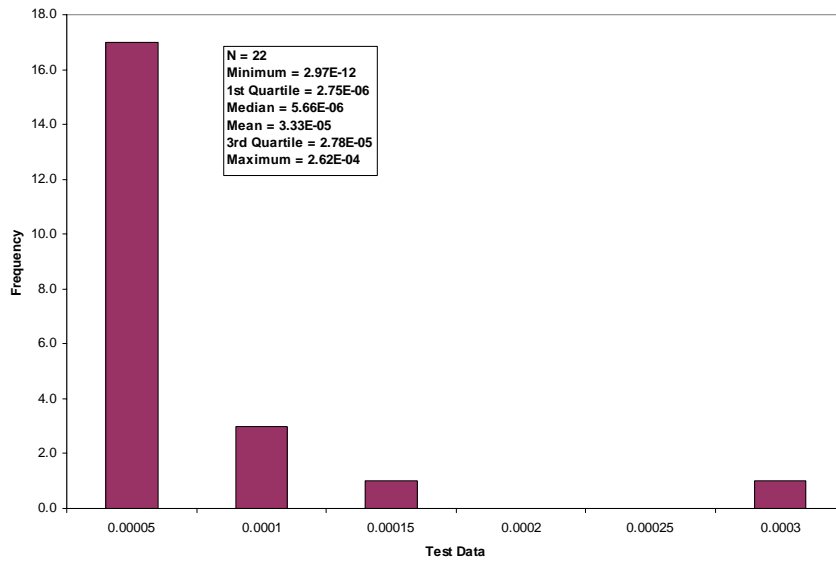


Figure C.1-10. Chapter 1.6 - Wood Residue Combustion in Boilers, Nickel Test Data.

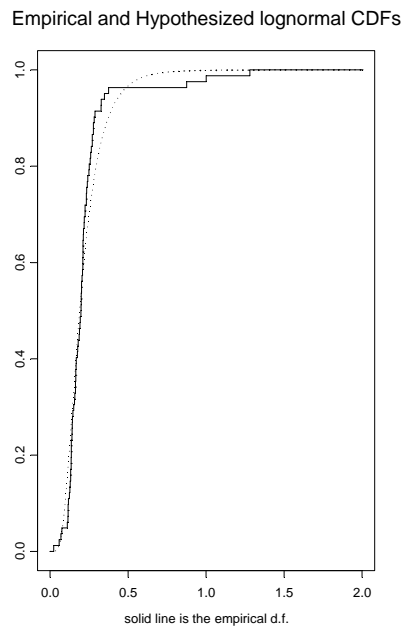
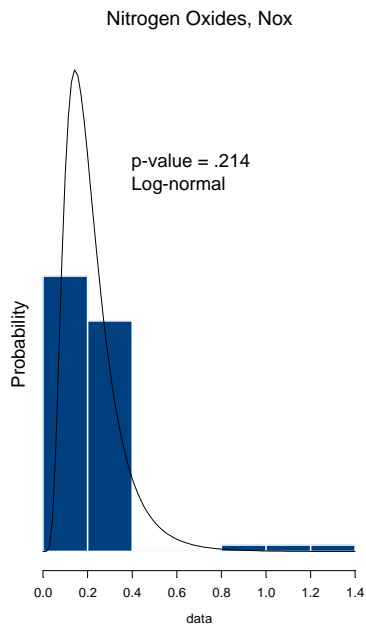
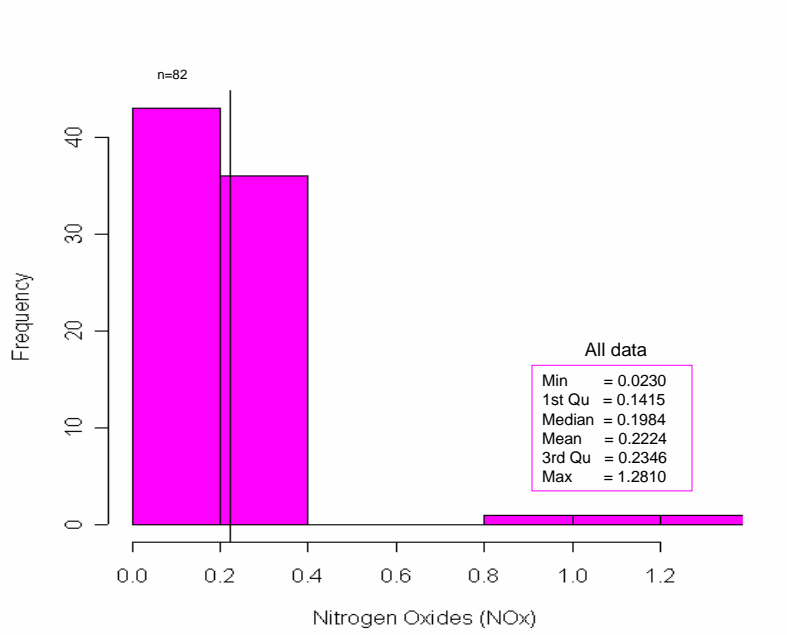


Figure C.1-11. Nitrogen Oxides.

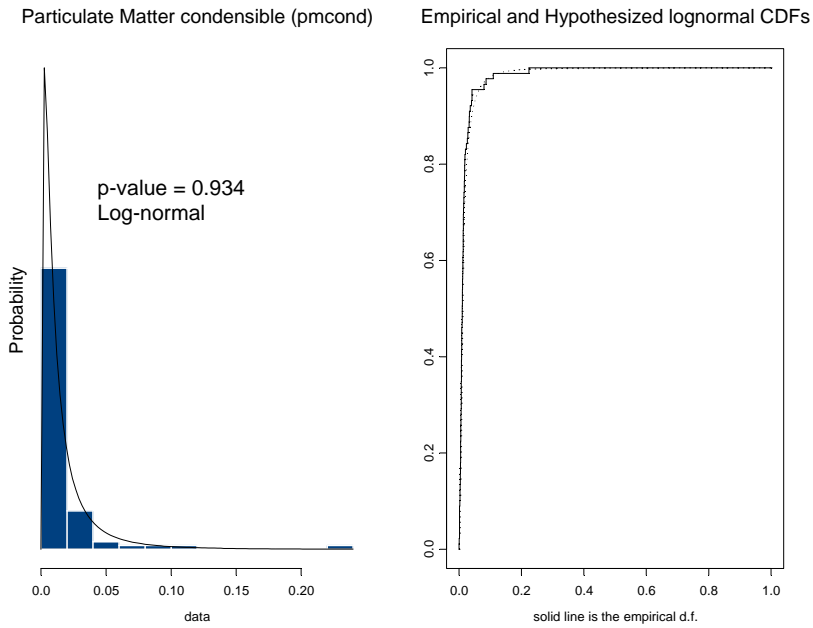
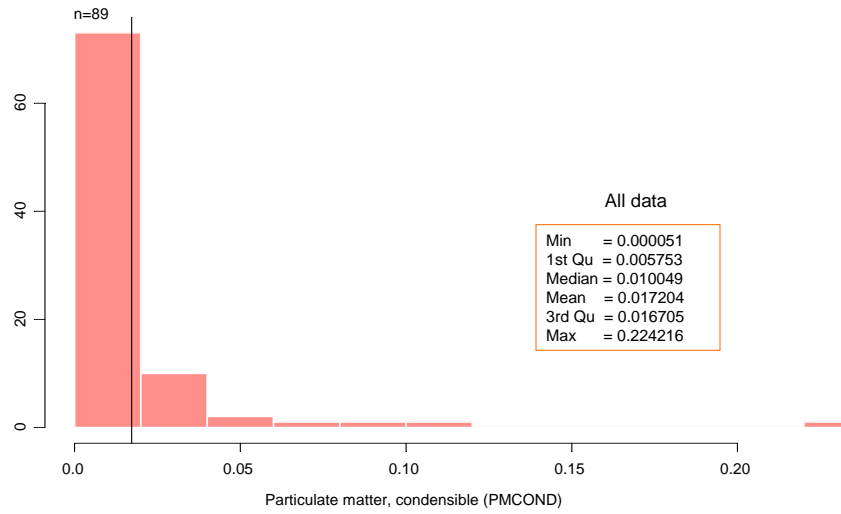
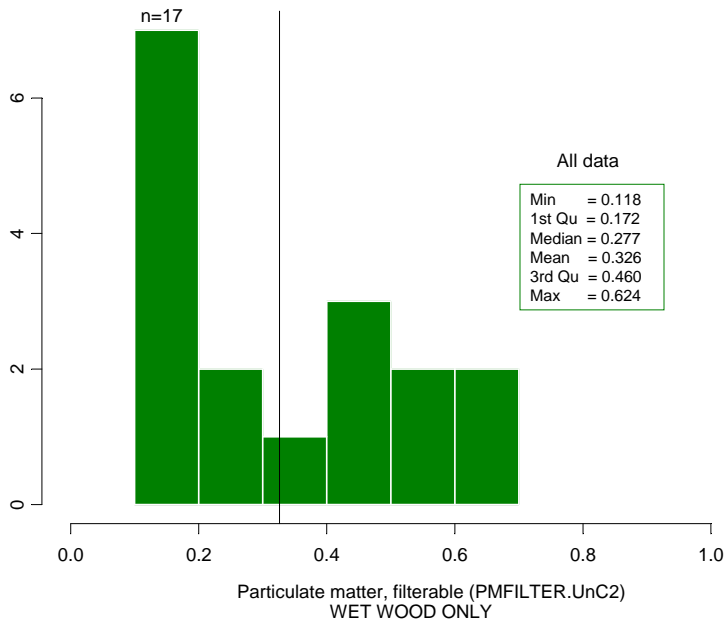
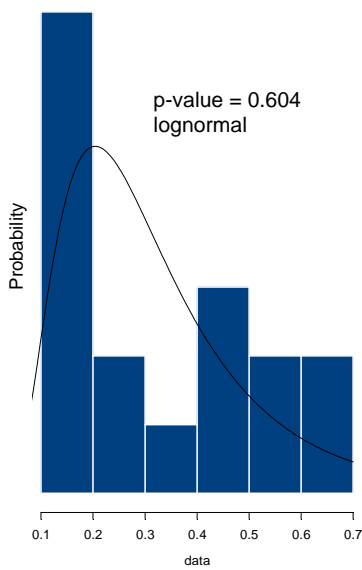


Figure C.1-12. Particulate Matter--Condensible.



Particulate Matter filterable (pmfilter.unc2)



Empirical and Hypothesized lognormal CDFs

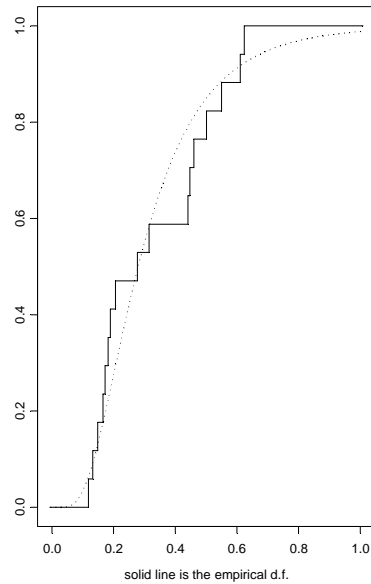
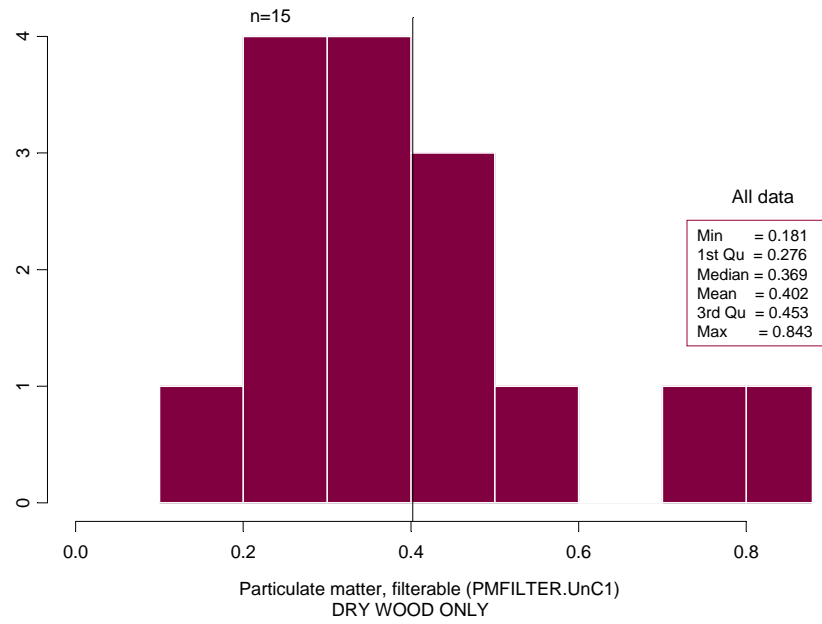
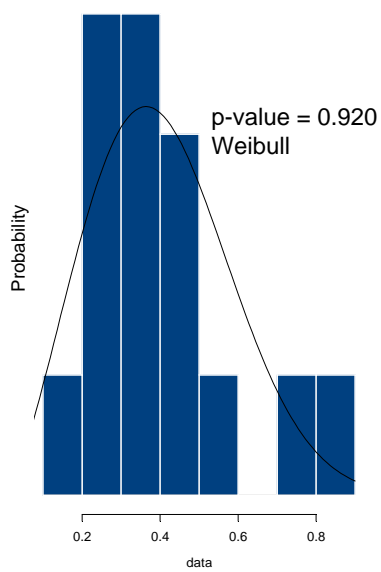


Figure C.1-13. Particulate Matter—Filterable, Wet Wood, Uncontrolled.



Particulate Matter filterable (pmfilter.unc1)



Empirical and Hypothesized weibull CDFs

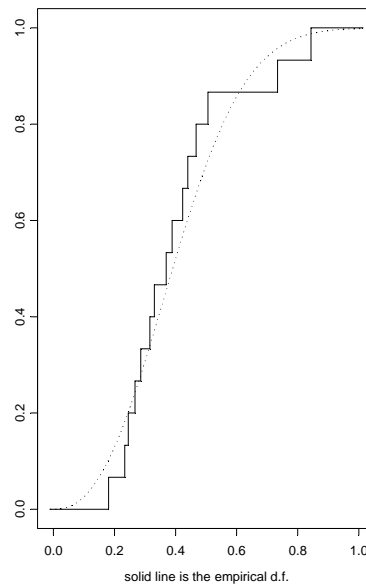


Figure C.1-14. Particulate Matter—Filterable, Dry Wood, Uncontrolled.

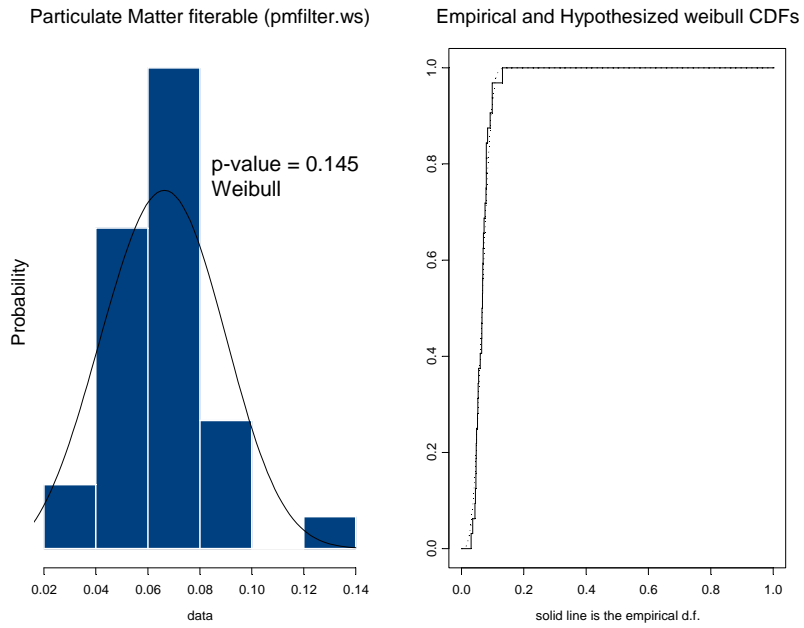
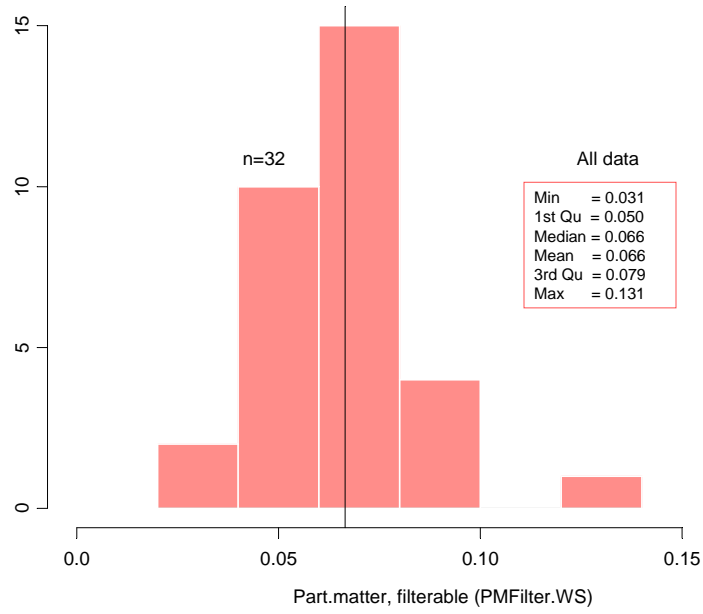
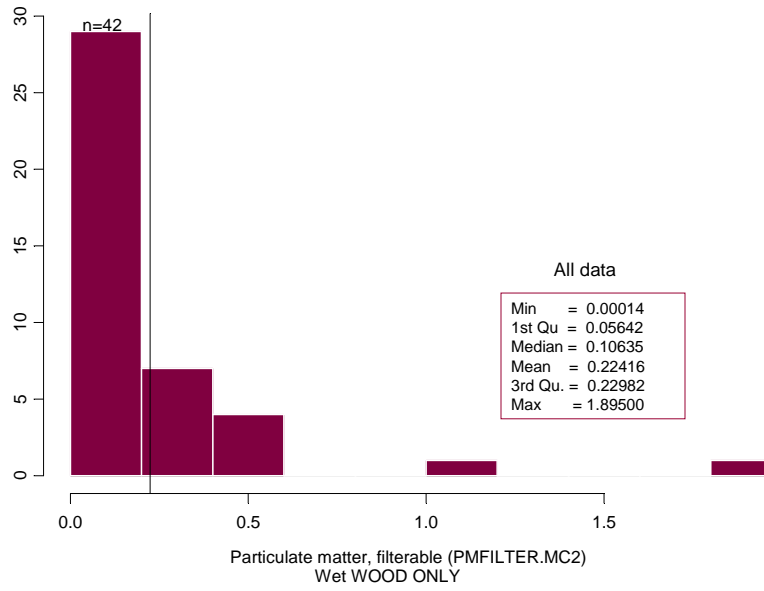
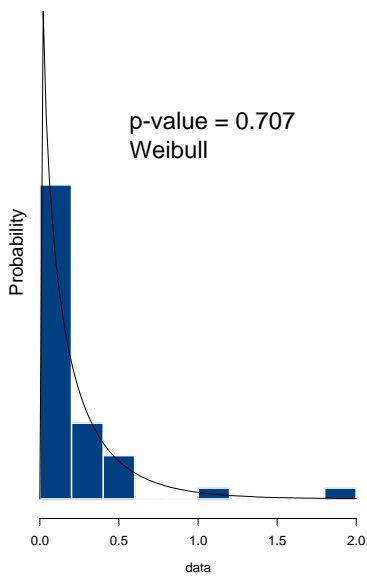


Figure C.1-15. Particulate Matter—Filterable, Wet Scrubber.



Particulate Matter filterable (pmfilter.mc2)



Empirical and Hypothesized weibull CDFs

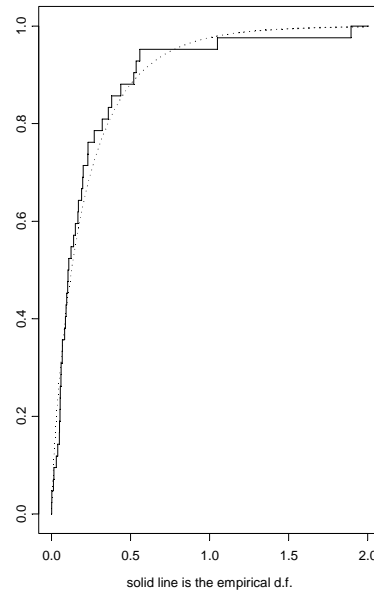


Figure C.1-16. Particulate Matter—Filterable, Wet Wood, Mechanical Control.

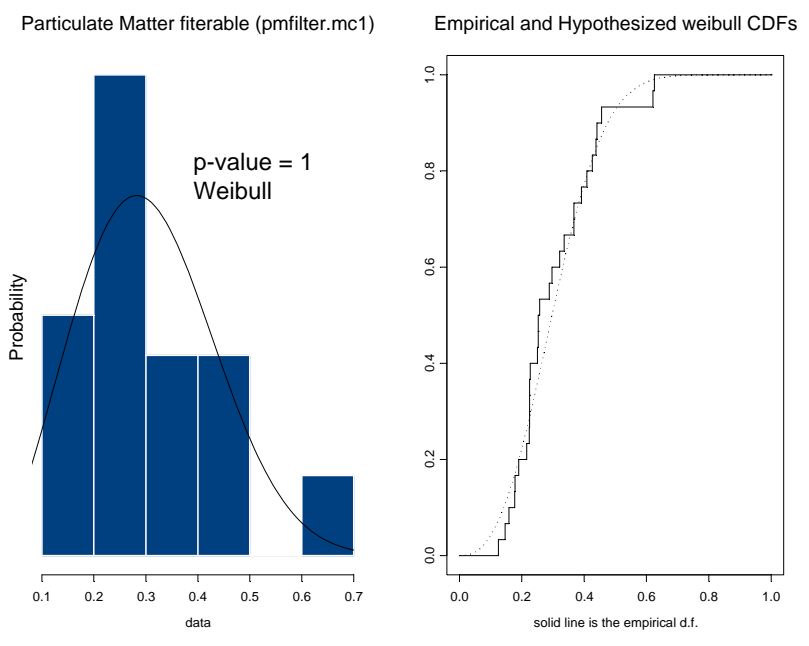
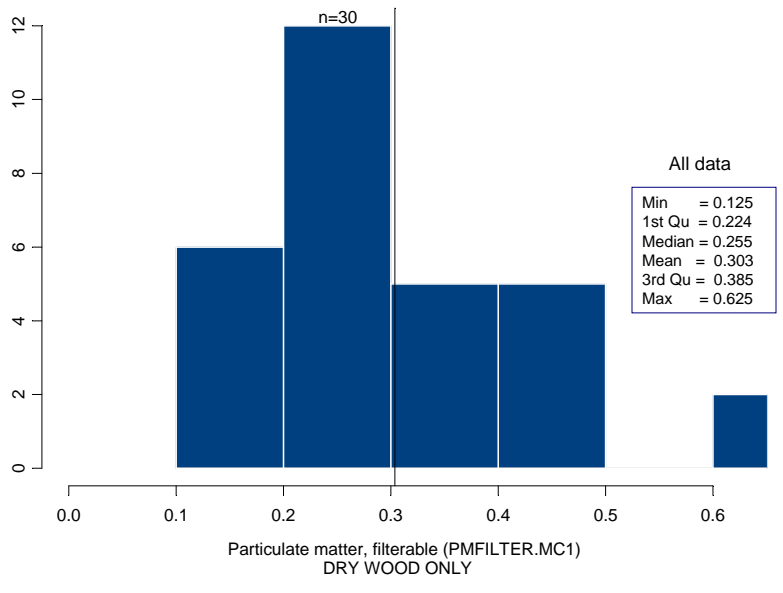


Figure C.1-17. Particulate Matter—Filterable, Dry Wood, Mechanical Control.

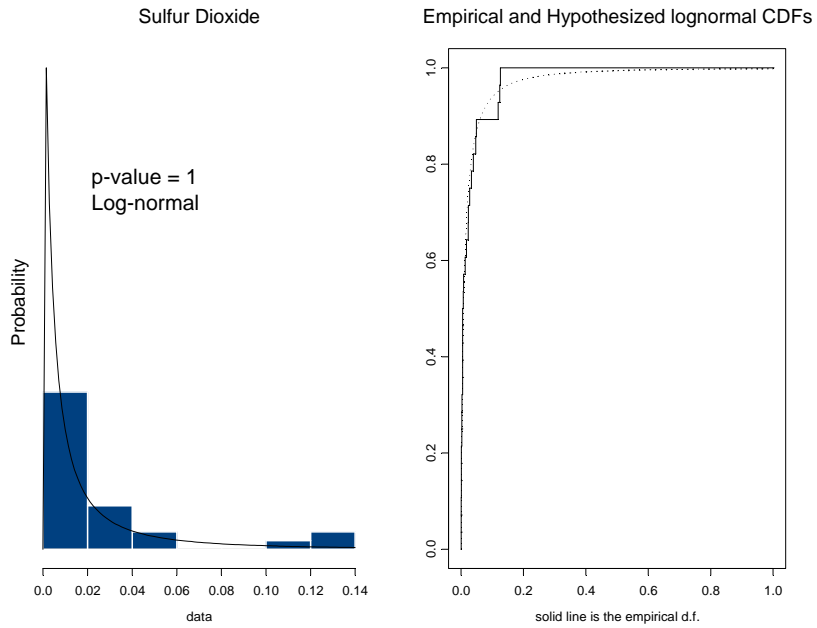
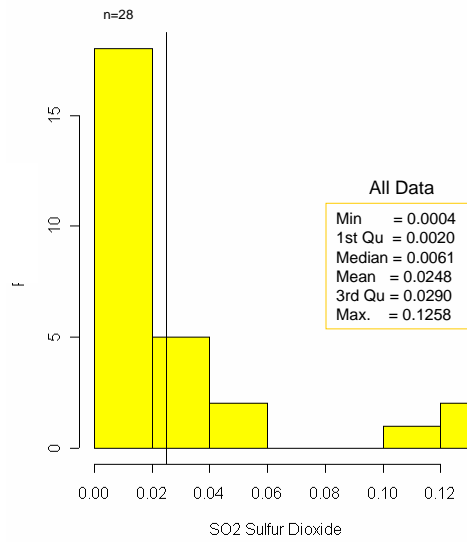


Figure C.1-18. Sulfur Dioxide.

Appendix C.2

Refuse Combustion

[This page intentionally left blank.]

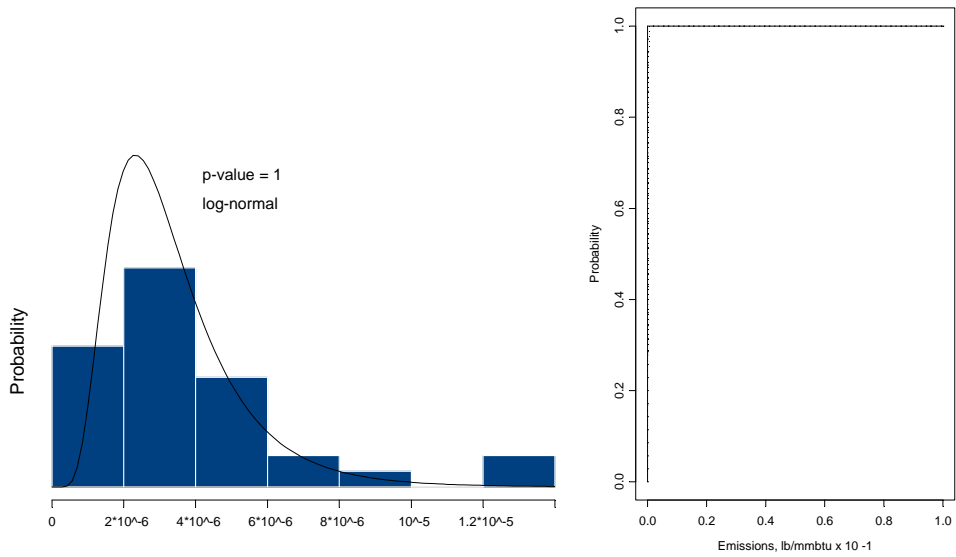
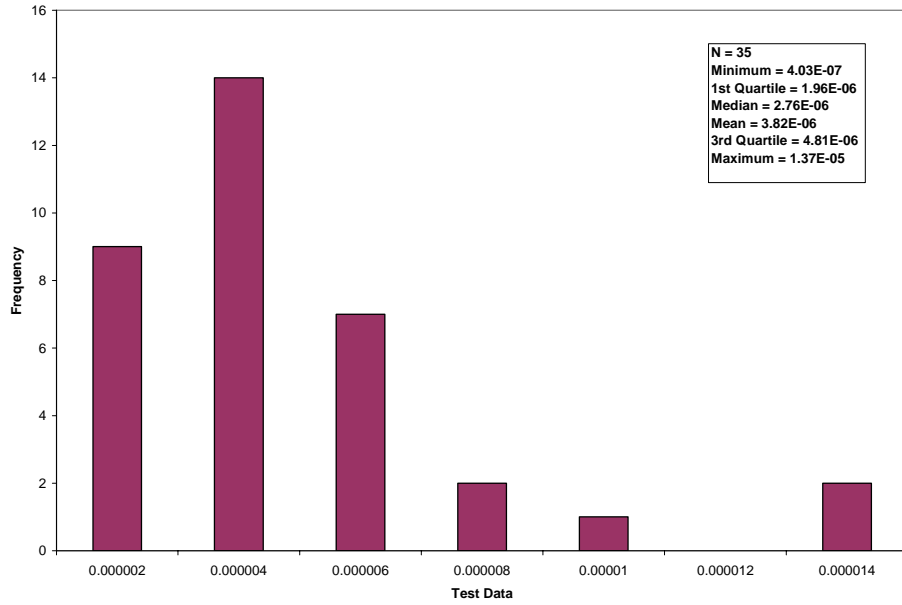


Figure C.2-1. Chapter 2.1 Refuse Combustion, Arsenic Data.

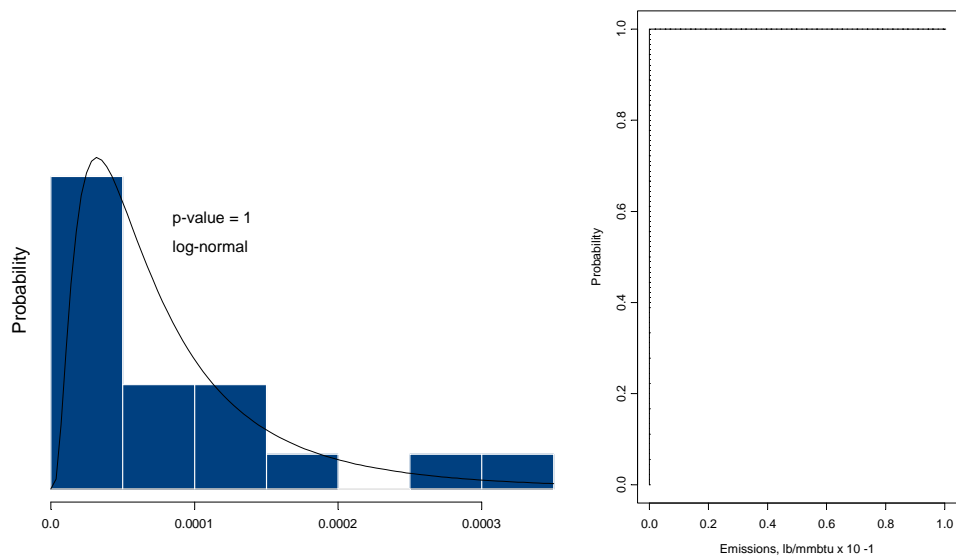
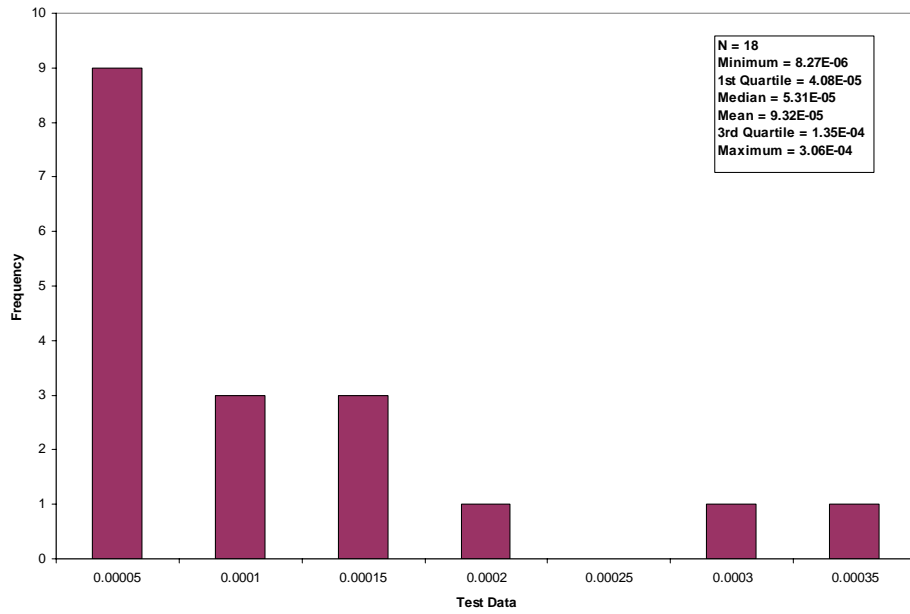


Figure C.2-2. Chapter 2.1 Refuse Combustion, Cadmium Data.

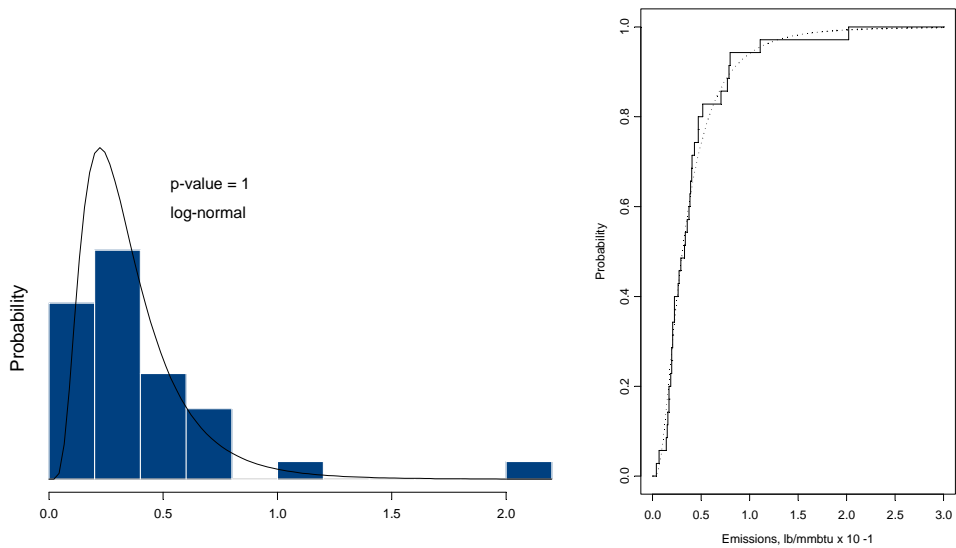
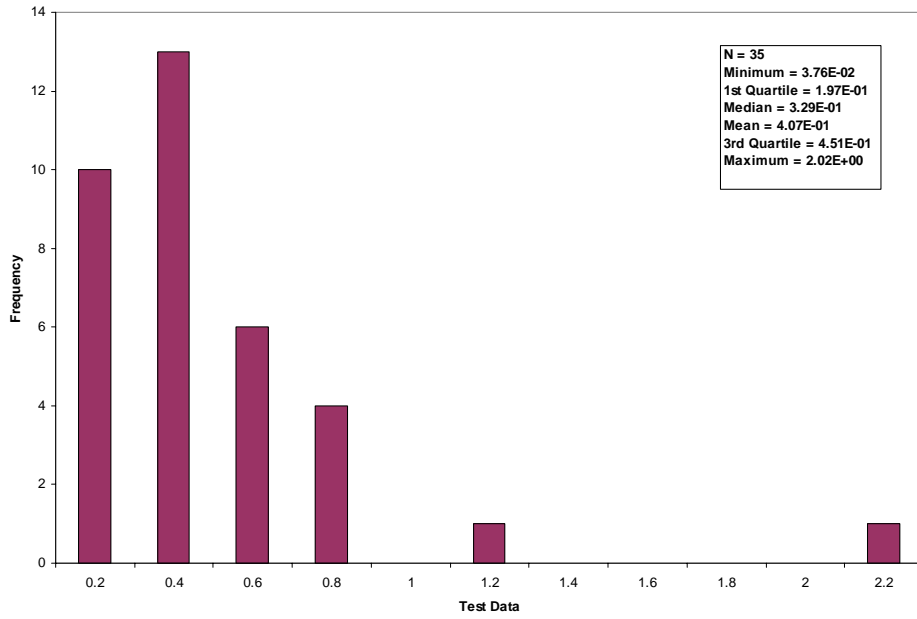


Figure C.2-3. Chapter 2.1 Refuse Combustion, Carbon Monoxide Data.

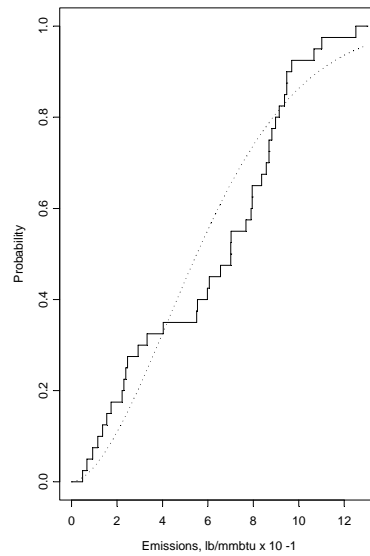
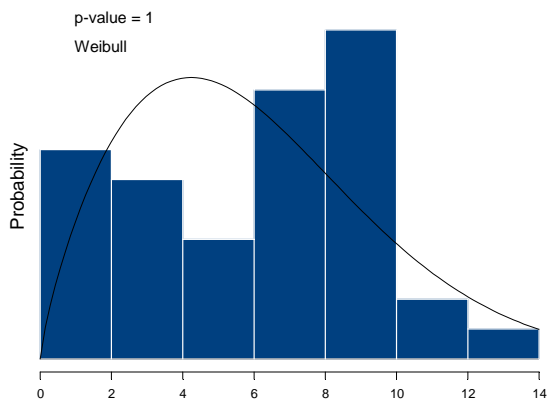
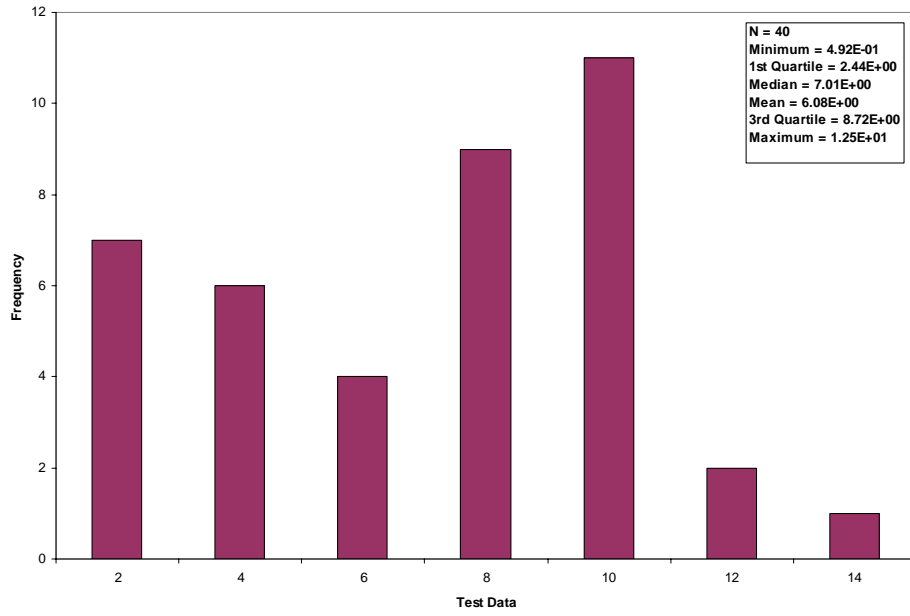


Figure C.2-4. Chapter 2.1 Refuse Combustion, Hydrogen Chloride (Uncontrolled) Data.

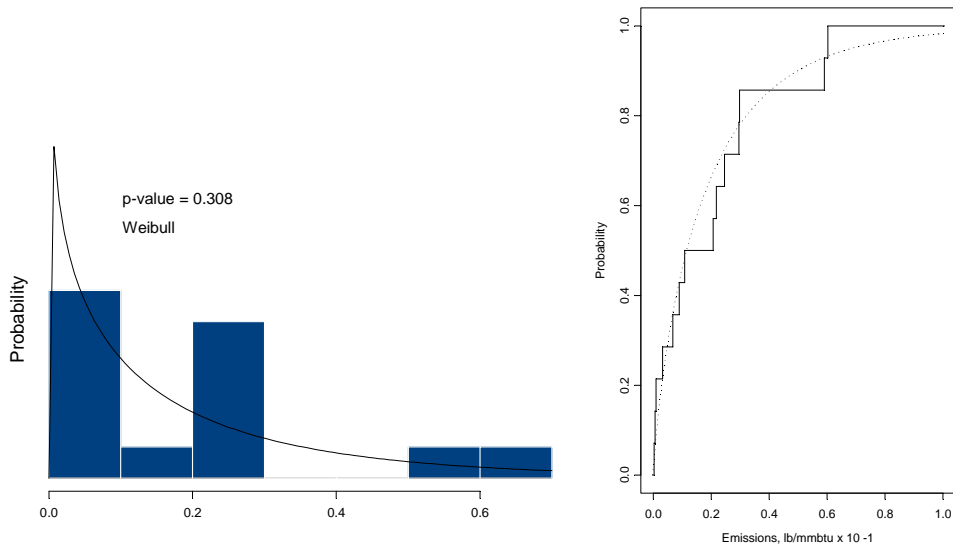
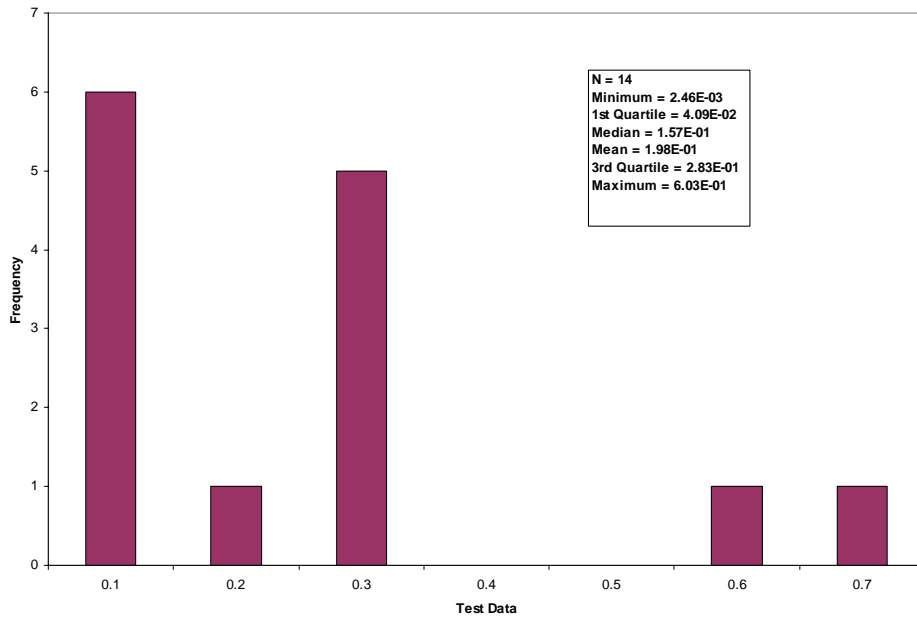


Figure C.2-5. Chapter 2.1 Refuse Combustion, Hydrogen Chloride (Spray Dryer/Fabric Filter) Data.

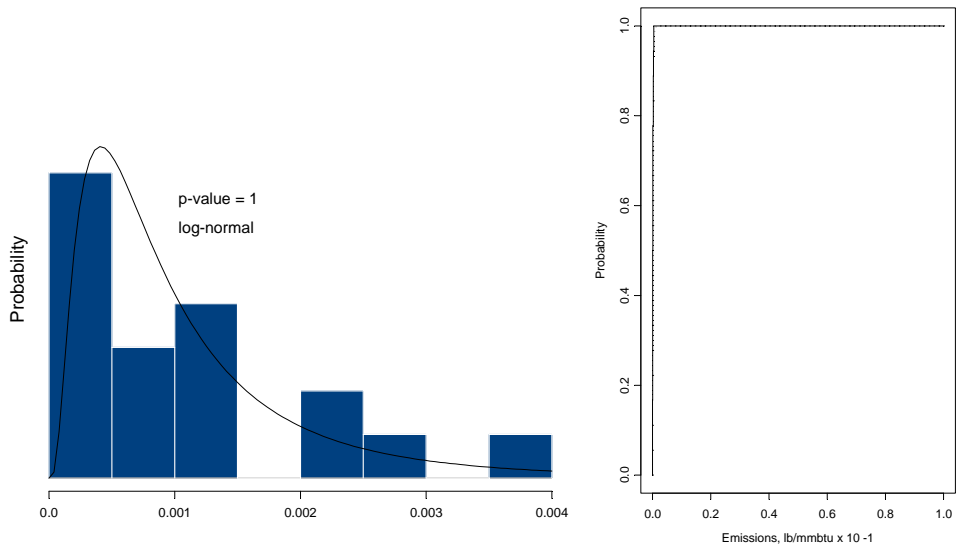
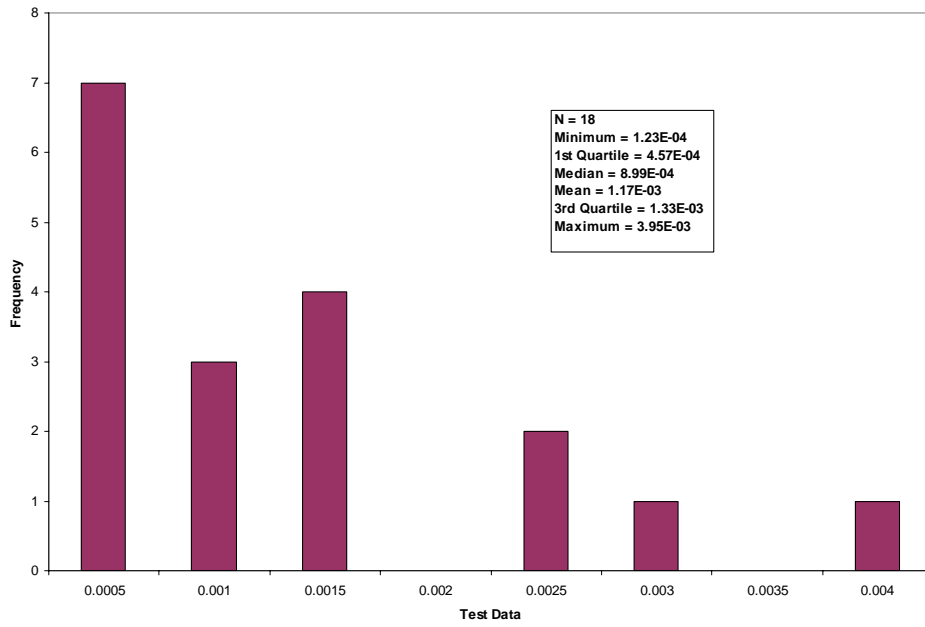


Figure C.2-6. Chapter 2.1 Refuse Combustion, Lead Data.

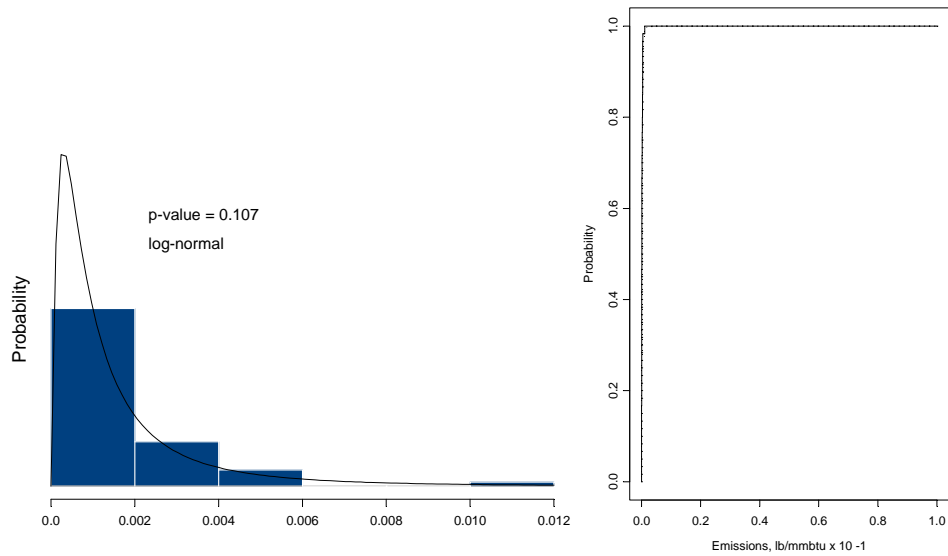
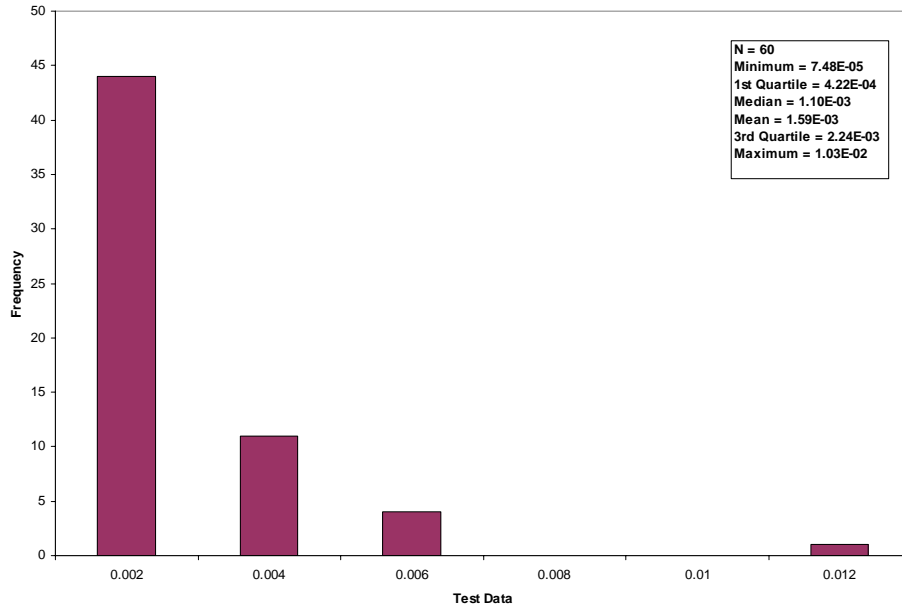


Figure C.2-7. Chapter 2.1 Refuse Combustion, Mercury Data.

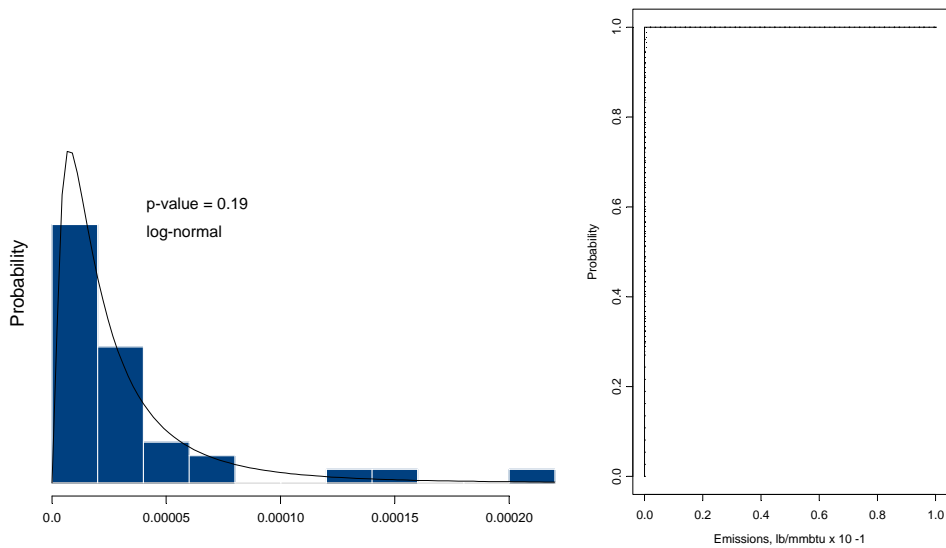
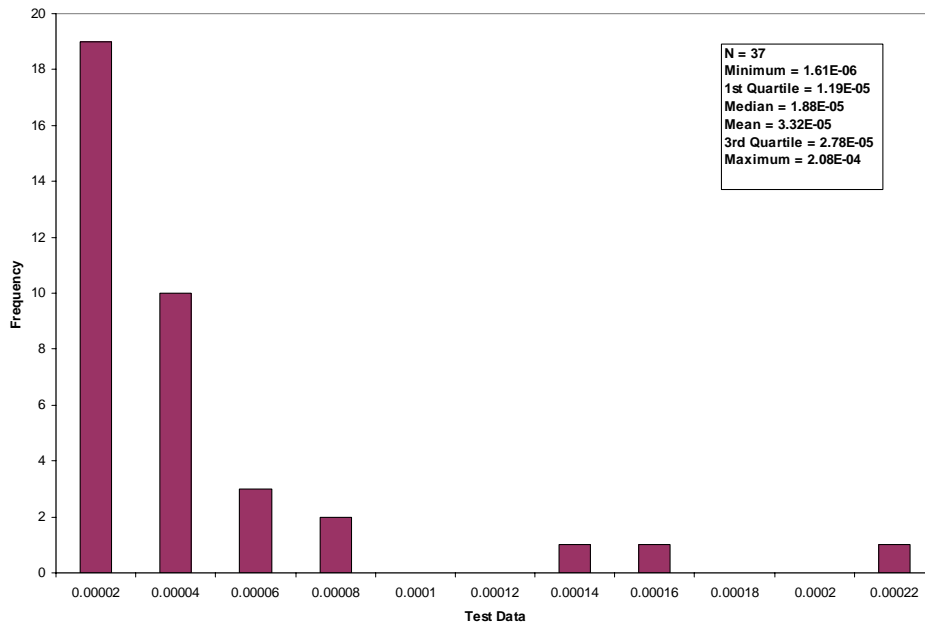


Figure C.2-8. Chapter 2.1 Refuse Combustion, Nickel Data.

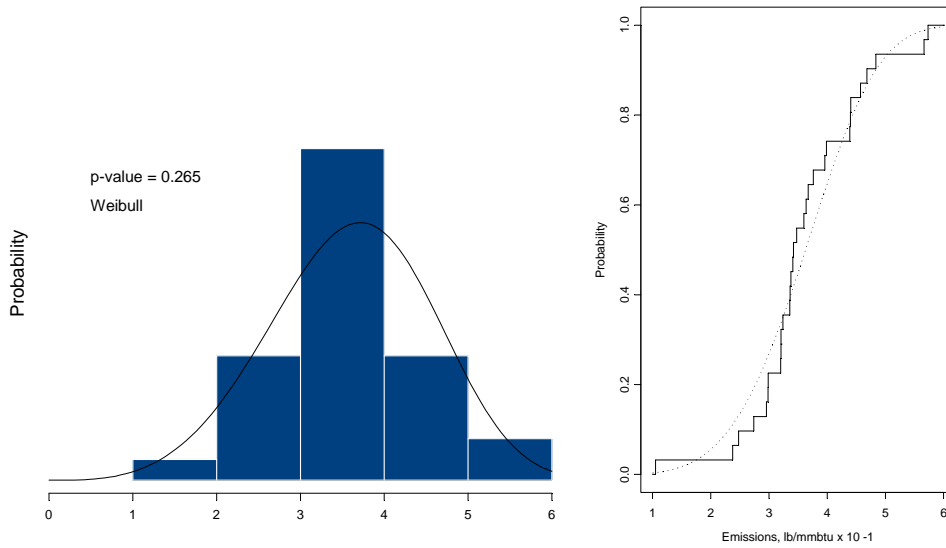
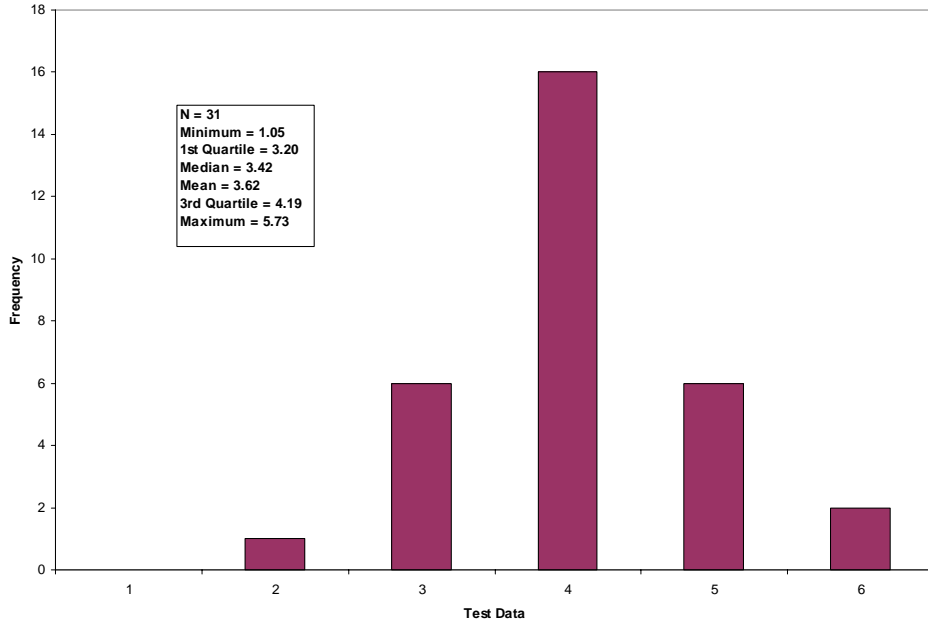


Figure C.2-9. Chapter 2.1 Refuse Combustion, Nitrogen Oxide Data.

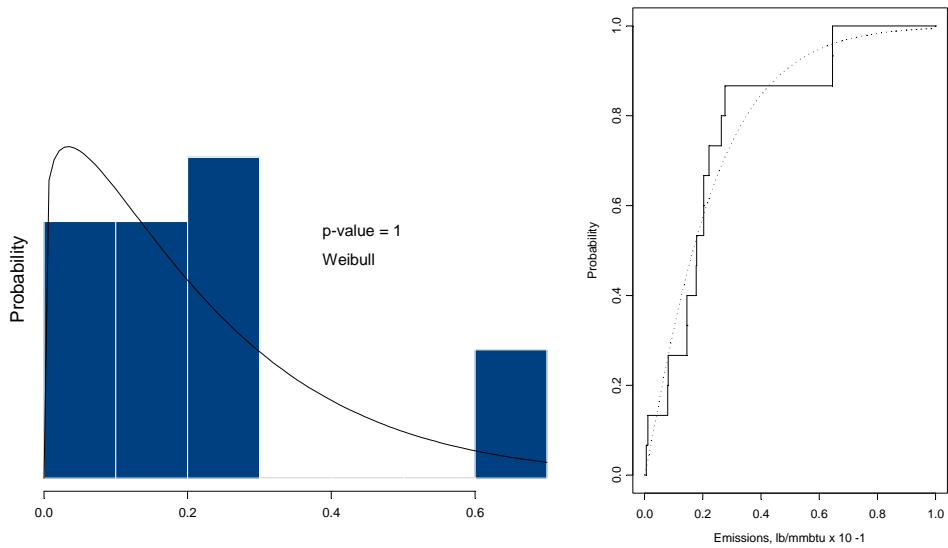
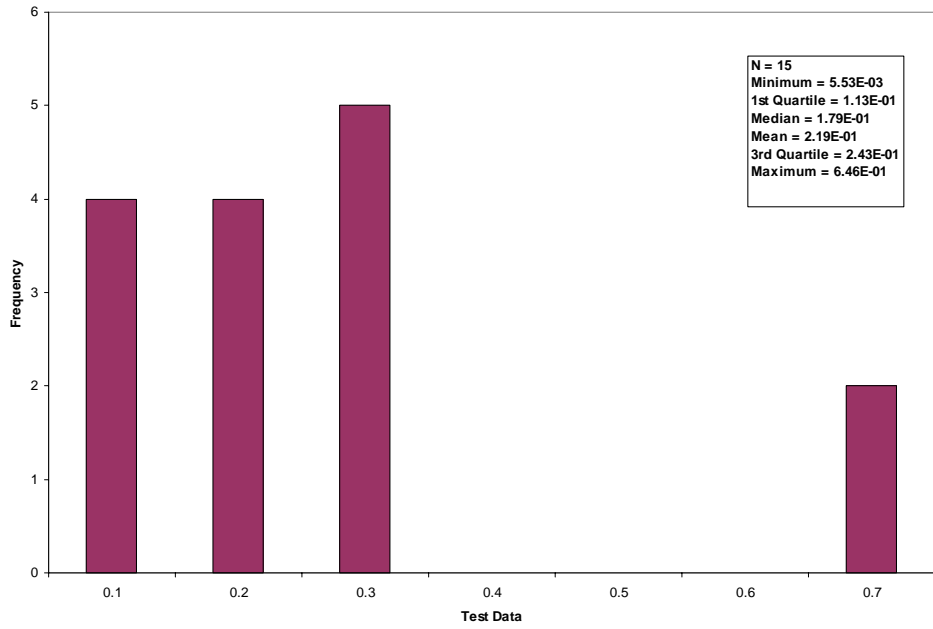


Figure C.2-10. Chapter 2.1 Refuse Combustion, Filterable Particulate Matter (Duct Sorbent Injection/Fabric Filter) Data.

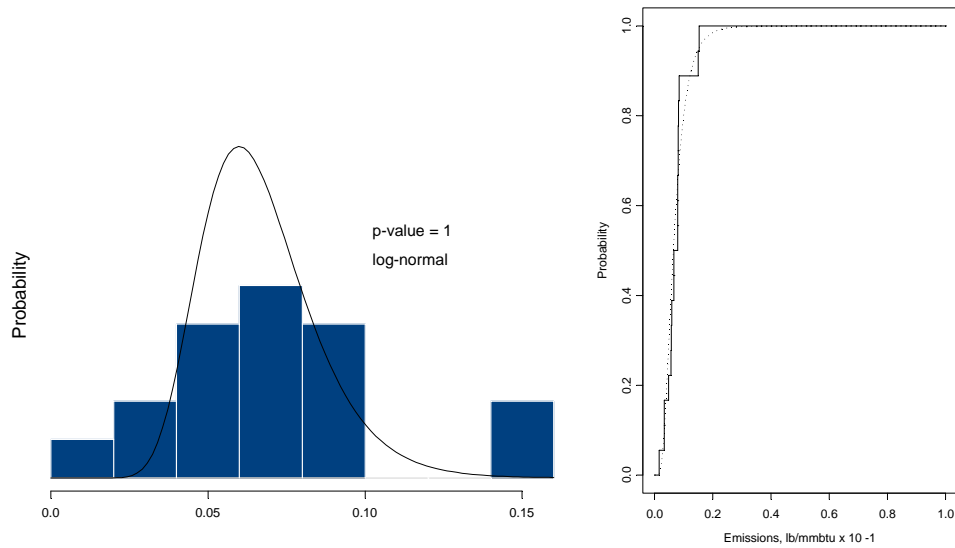
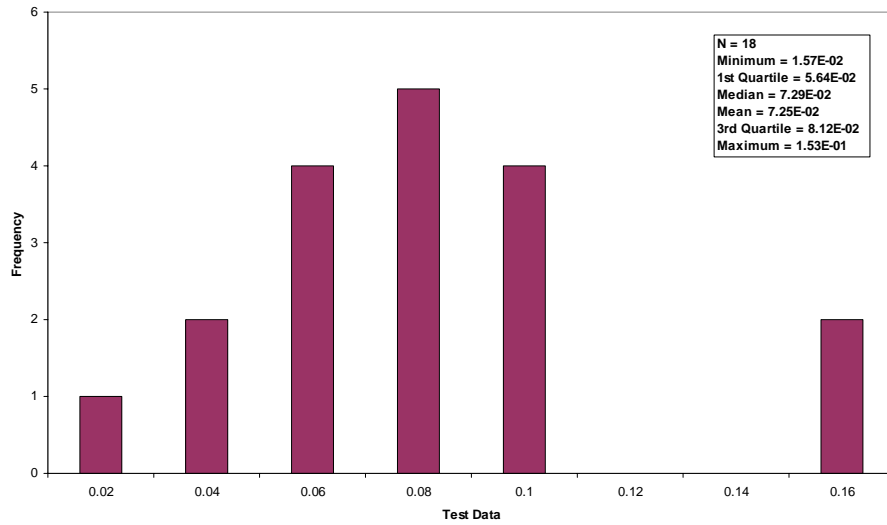


Figure C.2-11. Chapter 2.1 Refuse Combustion, Filterable Particulate Matter (Spray Dryer/ESP) Data.

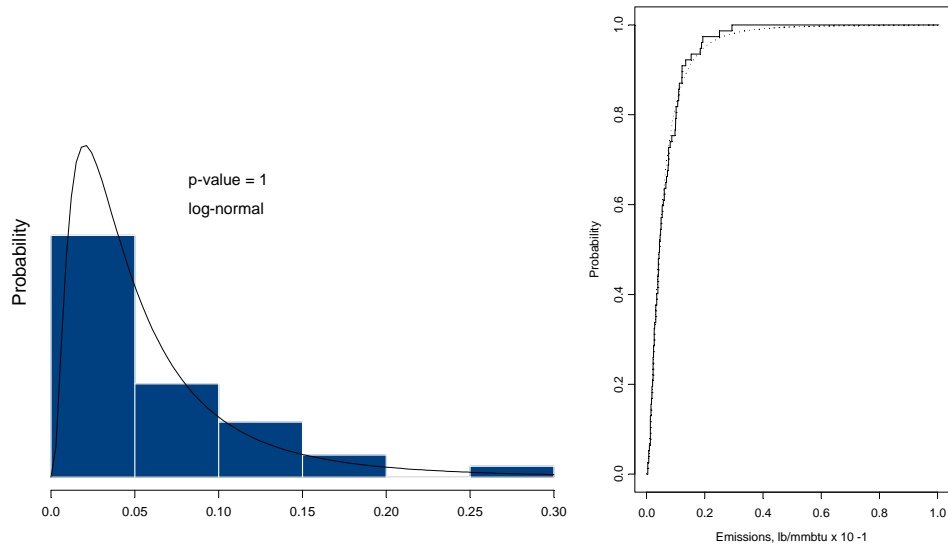
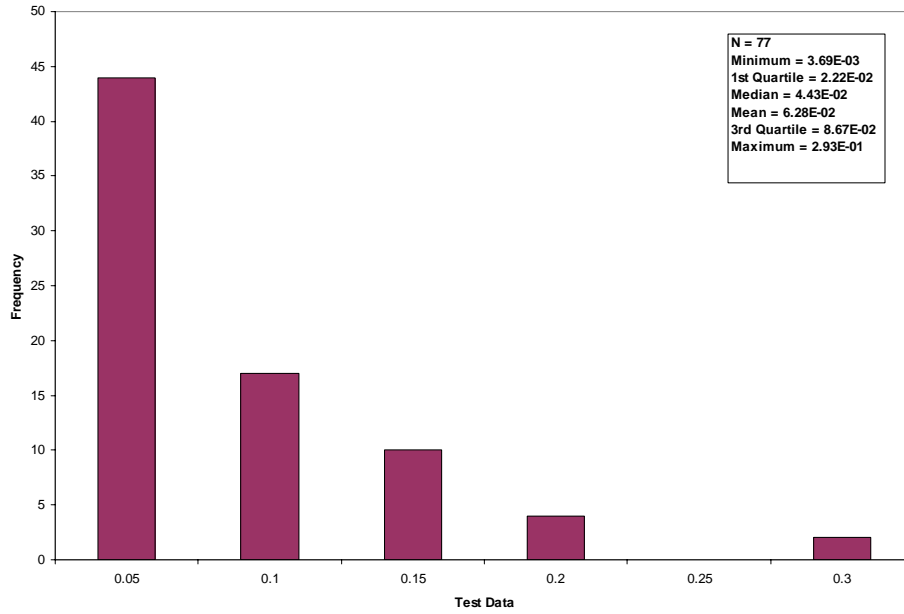


Figure C.2-12. Chapter 2.1 Refuse Combustion, Filterable Particulate Matter (Spray Dryer/Fabric Filter) Data.

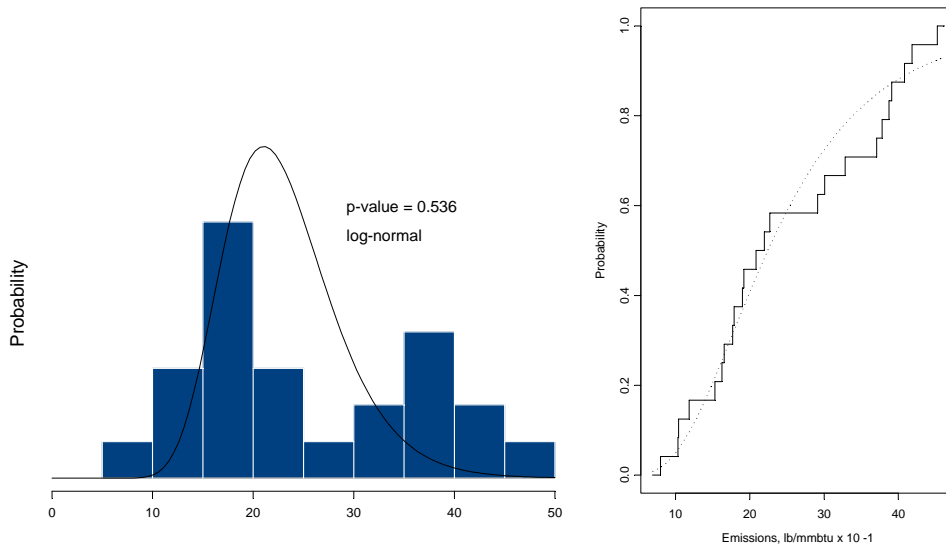
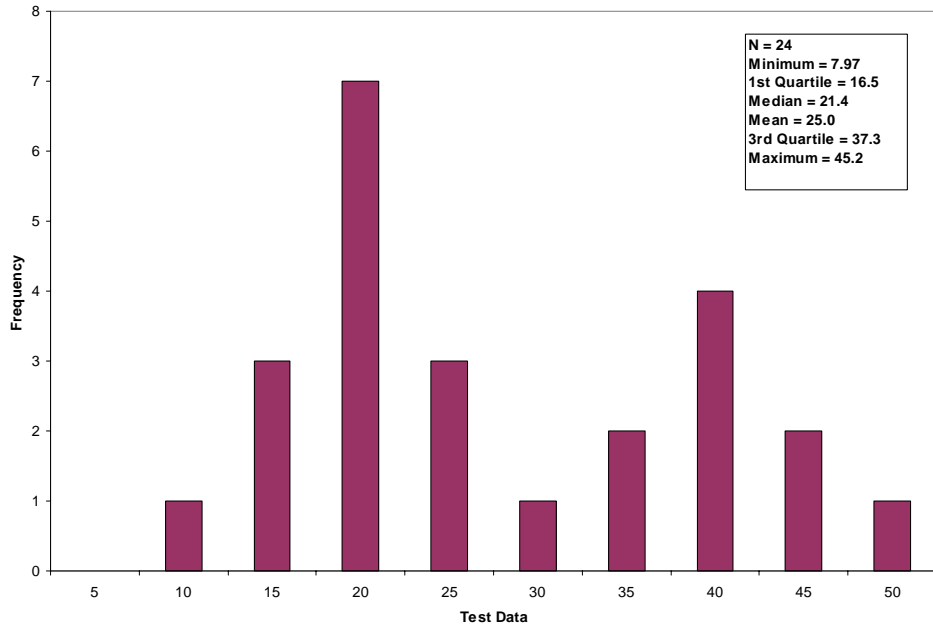


Figure C.2-13. Chapter 2.1 Refuse Combustion, Filterable Particulate Matter (Mass Burn, Uncontrolled) Data.

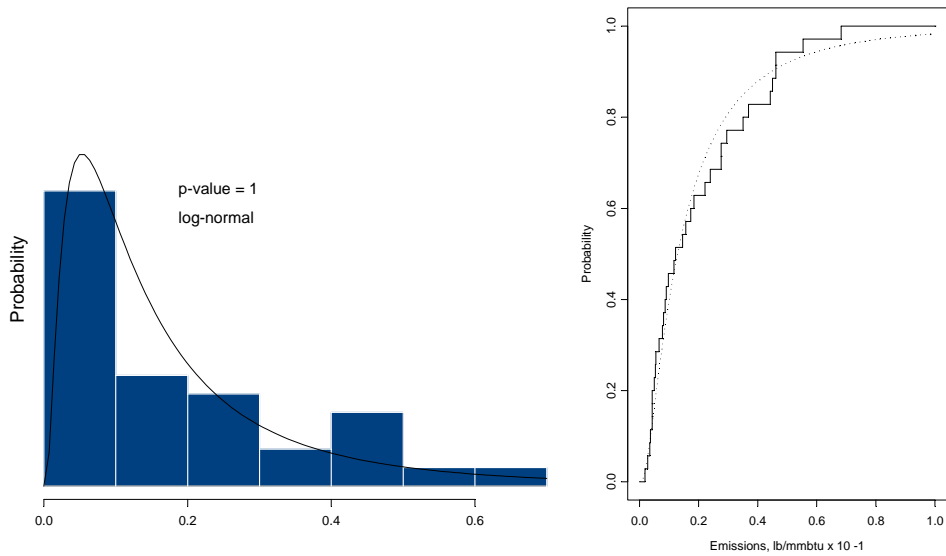
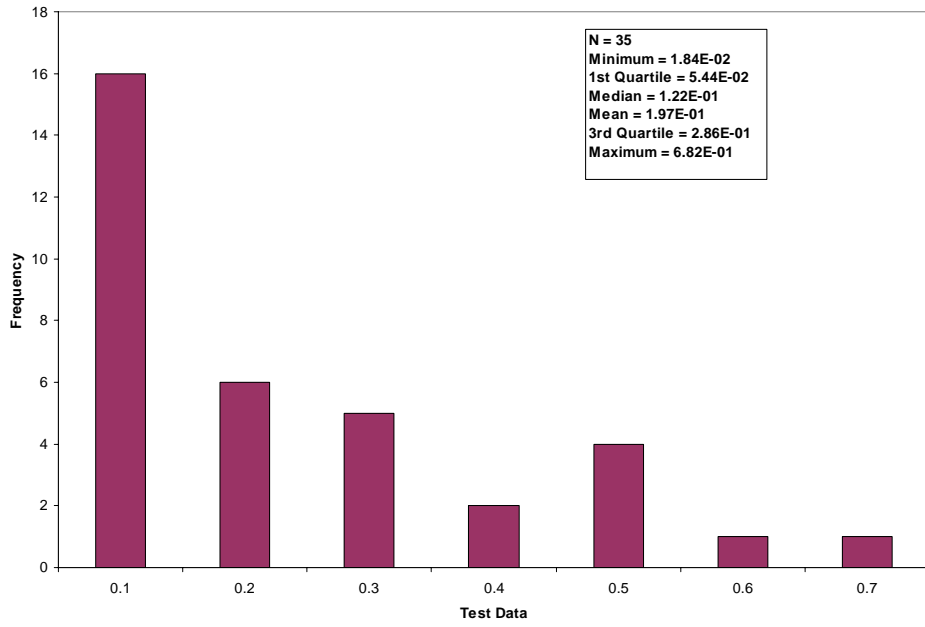


Figure C.2-14. Chapter 2.1 Refuse Combustion, Filterable Particulate Matter (Mass Burn ESP) Data.

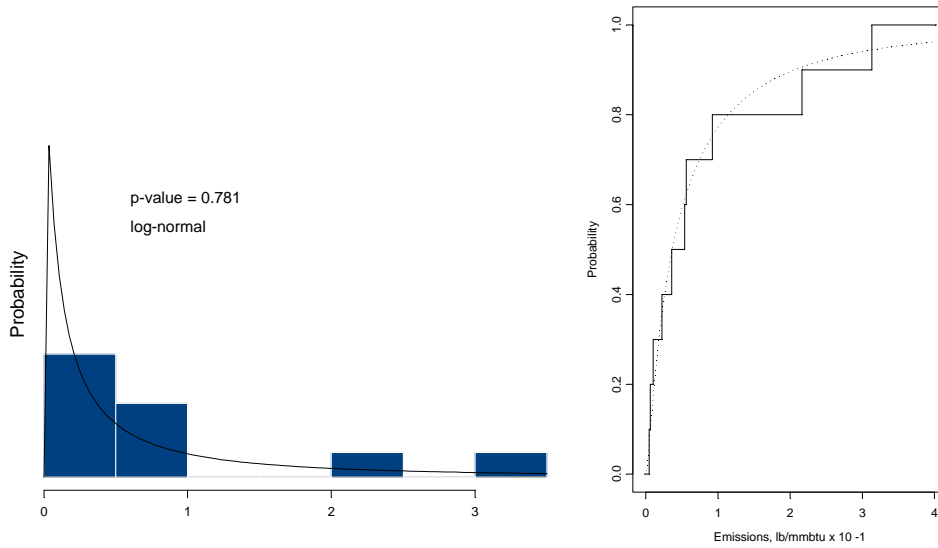
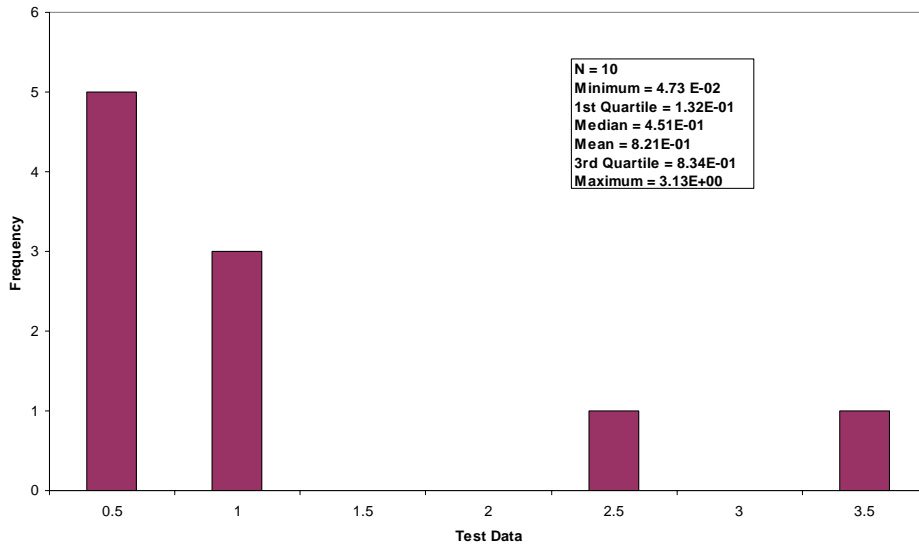


Figure C.2-15. Chapter 2.1 Refuse Combustion, Filterable Particulate Matter (RDF, ESP) Data.

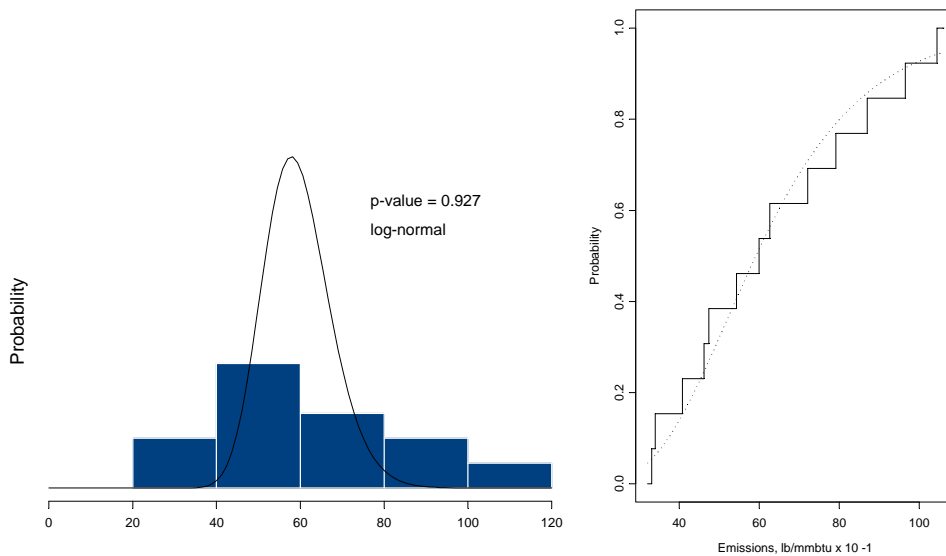
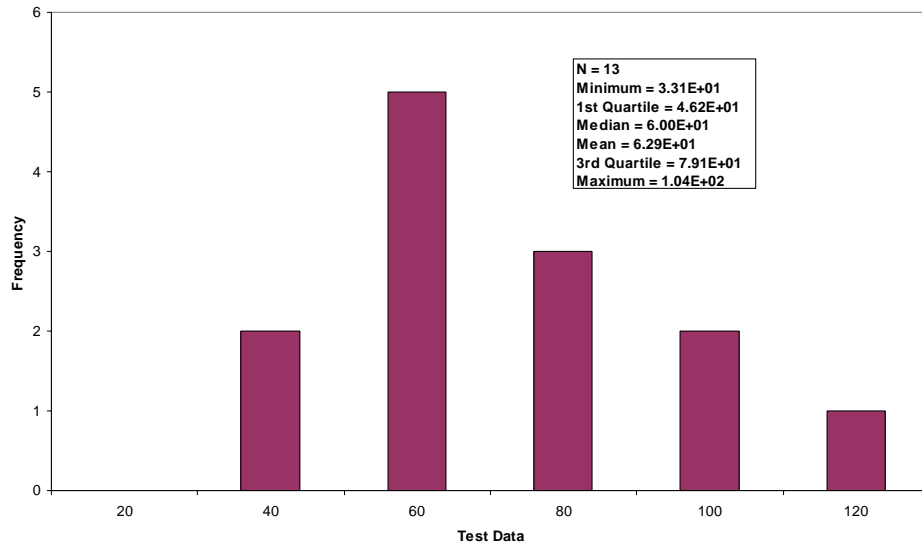


Figure C.2-16. Chapter 2.1 Refuse Combustion, Filterable Particulate Matter (RDF, Uncontrolled) Data.

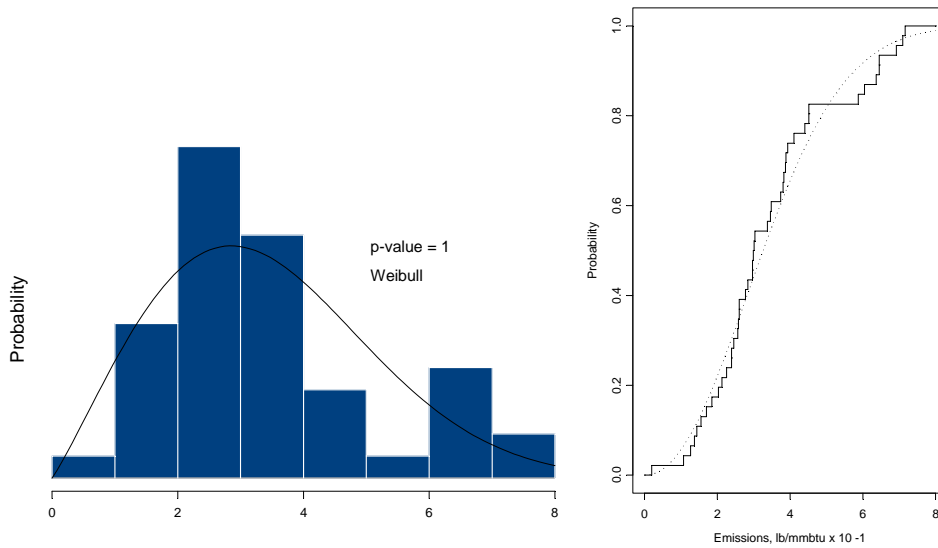
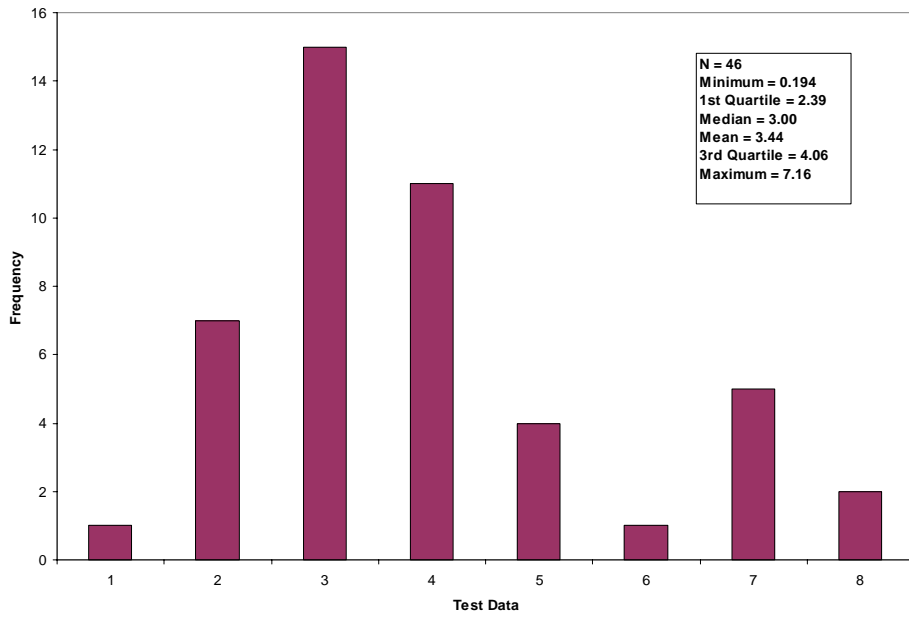


Figure C.2-17. Chapter 2.1 Refuse Combustion, Sulfur Dioxide Data.

[This page intentionally left blank.]

Appendix C.3

Waferboard/Oriented Strandboard Manufacturing

[This page intentionally left blank.]

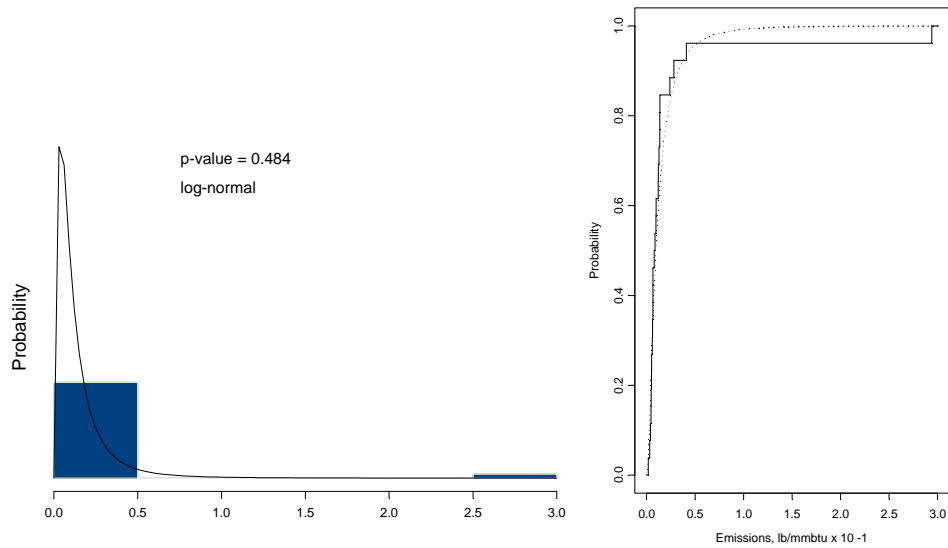
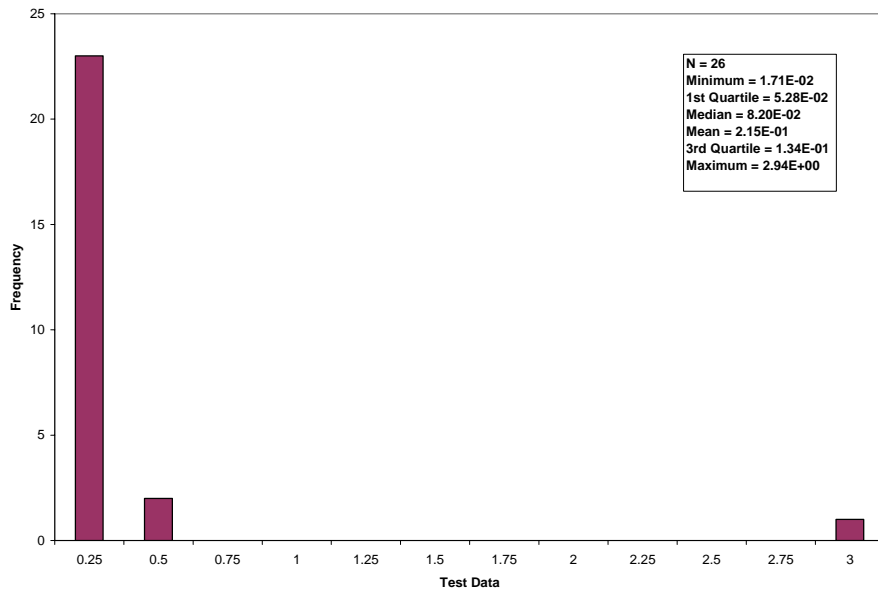


Figure C.3-1. Chapter 10.6.1 Waferboard Oriented Strandboard, Filterable Particulate Matter Data.

[This page intentionally left blank.]

Appendix C.4

Hot Mix Asphalt Plants

[This page intentionally left blank.]

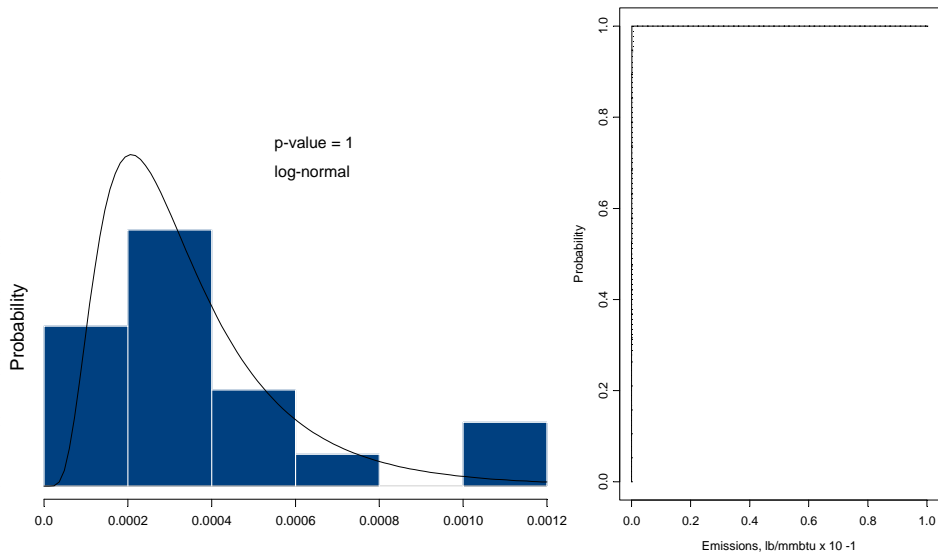
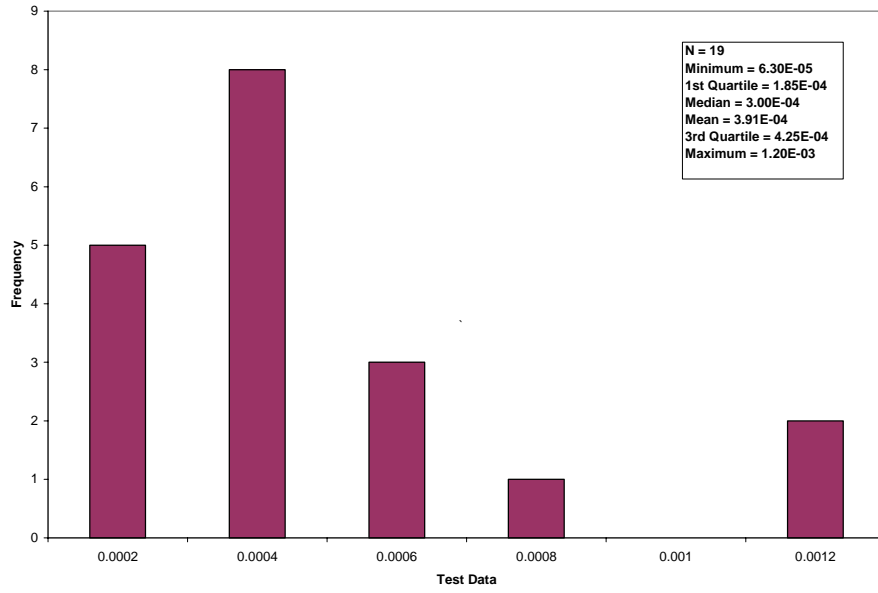


Figure C.4-1. Chapter 11.1 Hot Mix Asphalt Plants, Benzene Data.

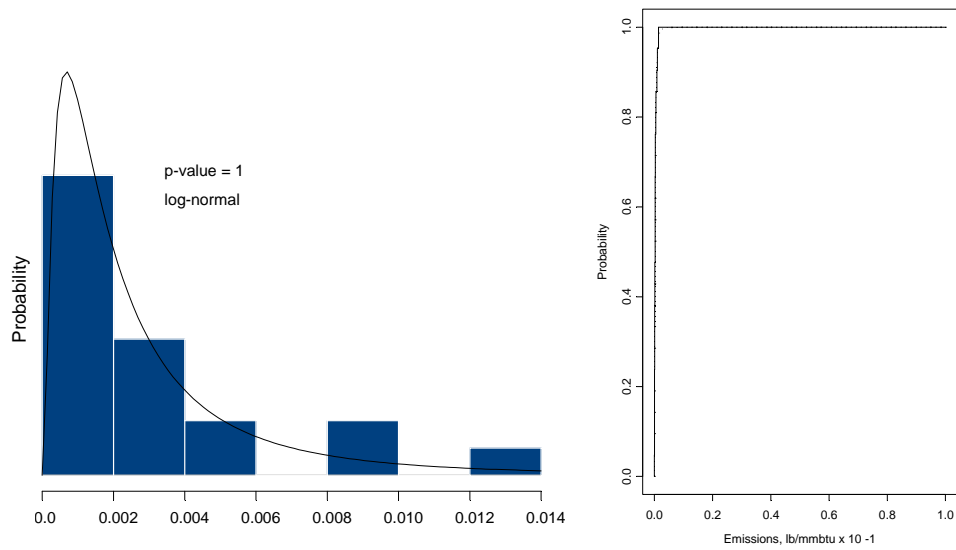
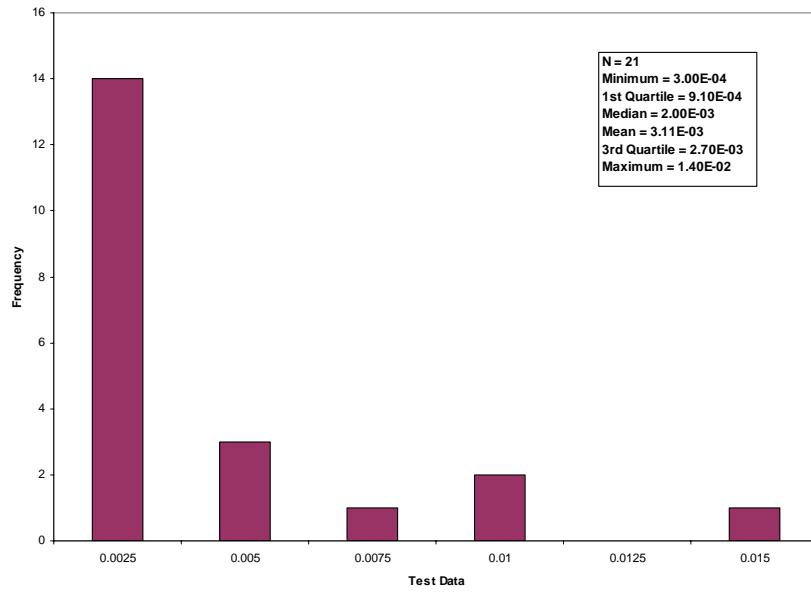


Figure C.4-2. Chapter 11.1 Hot Mix Asphalt Plants, Formaldehyde Data.

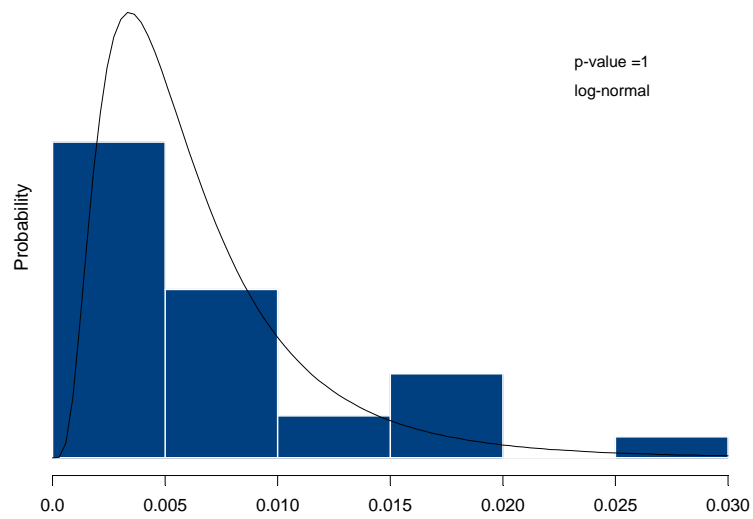
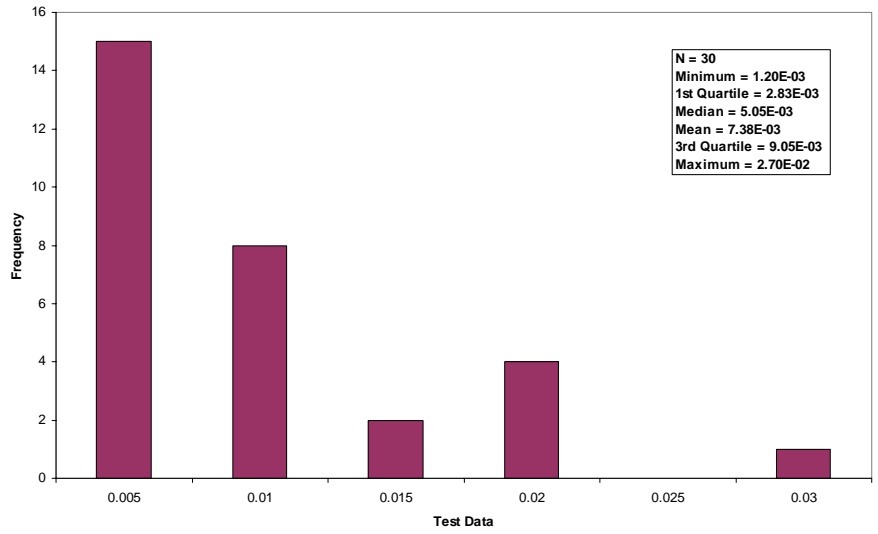


Figure C.4-3. Chapter 11.1 Hot Mix Asphalt Plants, Drum Mix, Condensable (Inorganic) Particulate Matter Data.

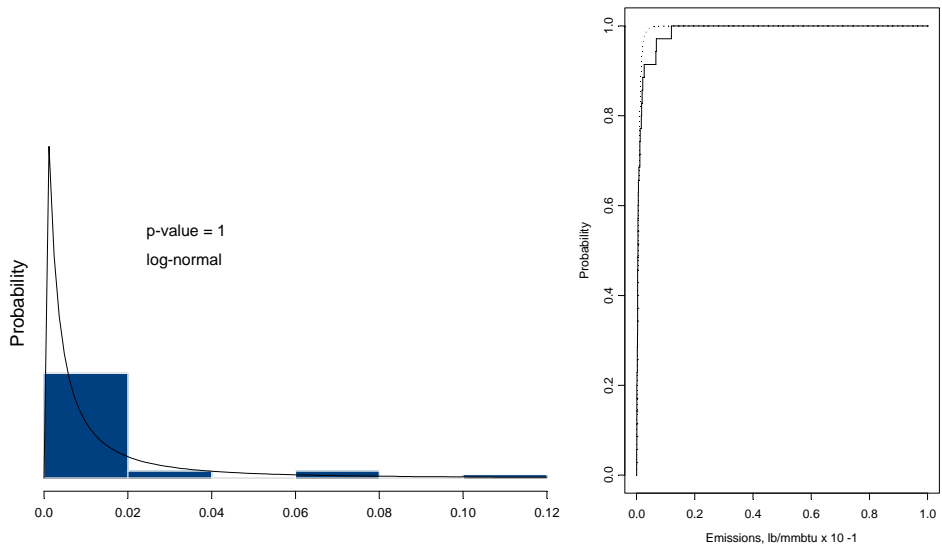
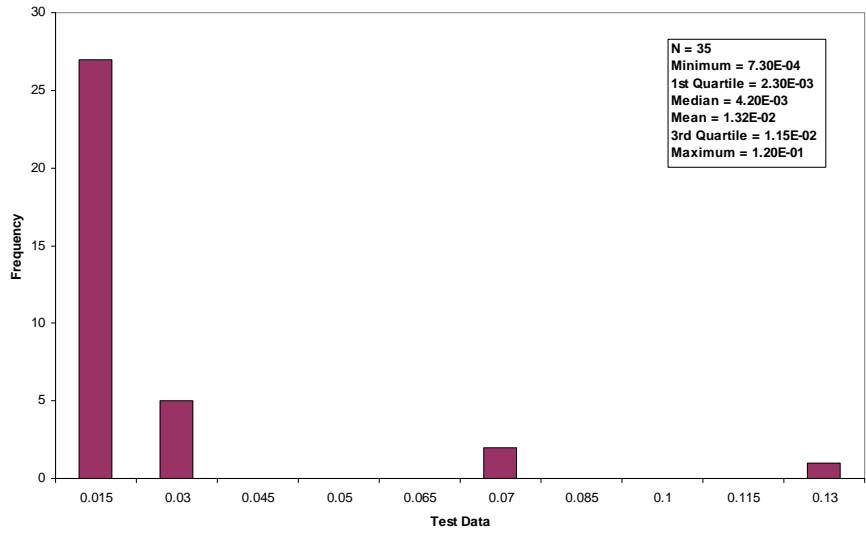


Figure C.4-4. Chapter 11.1 Hot Mix Asphalt Plants, Batch Mix, Condensable (Inorganic) Particulate Matter Data.

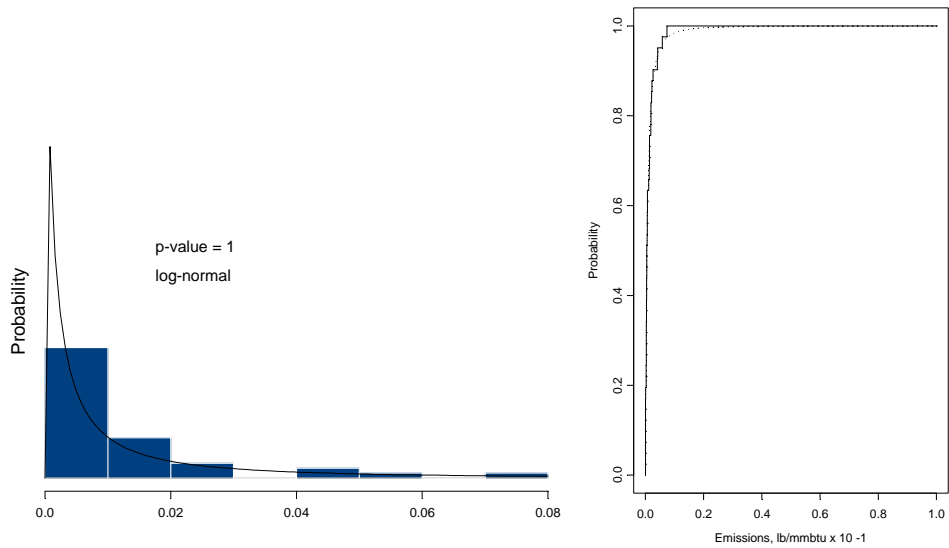
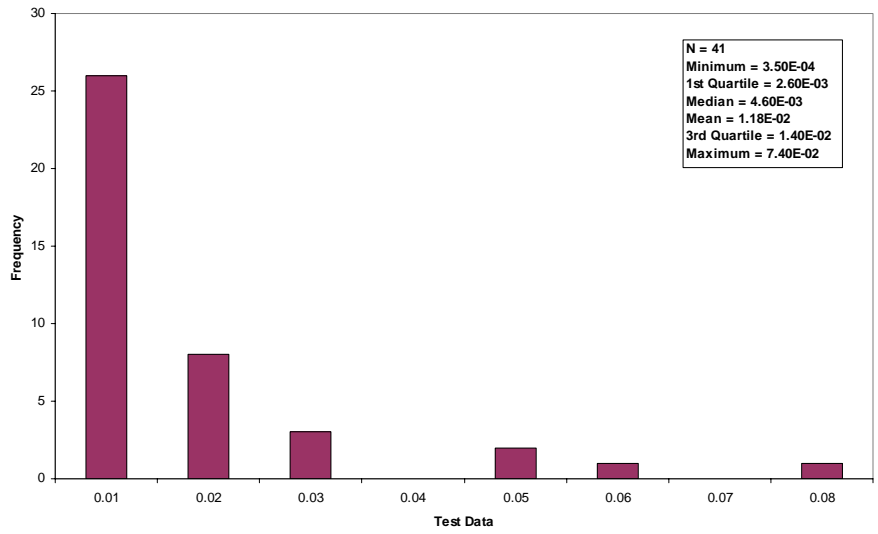


Figure C.4-5. Chapter 11.1 Hot Mix Asphalt Plants, Drum Mix, Condensable (Organic) Particulate Matter Data.

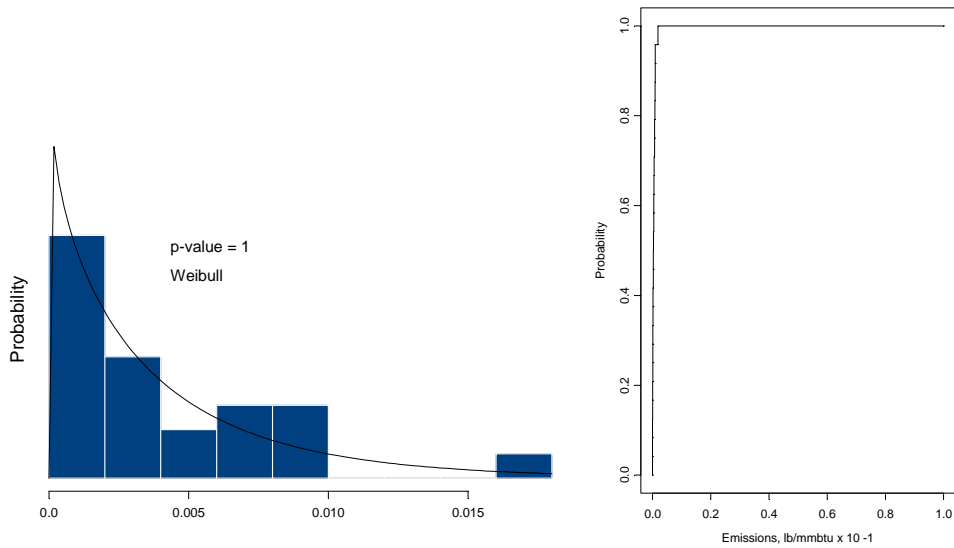
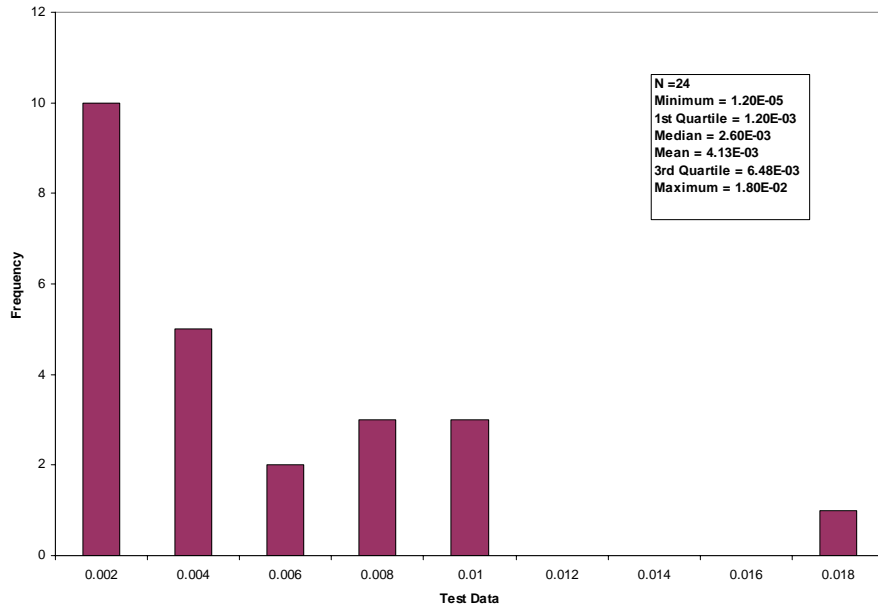


Figure C.4-6. Chapter 11.1 Hot Mix Asphalt Plants, Batch Mix, Condensable (Organic) Particulate Matter Data.

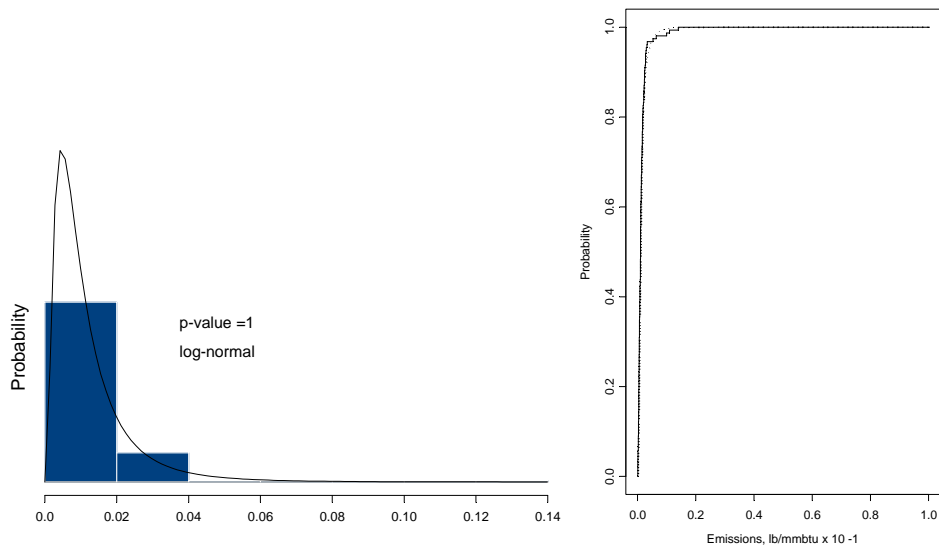
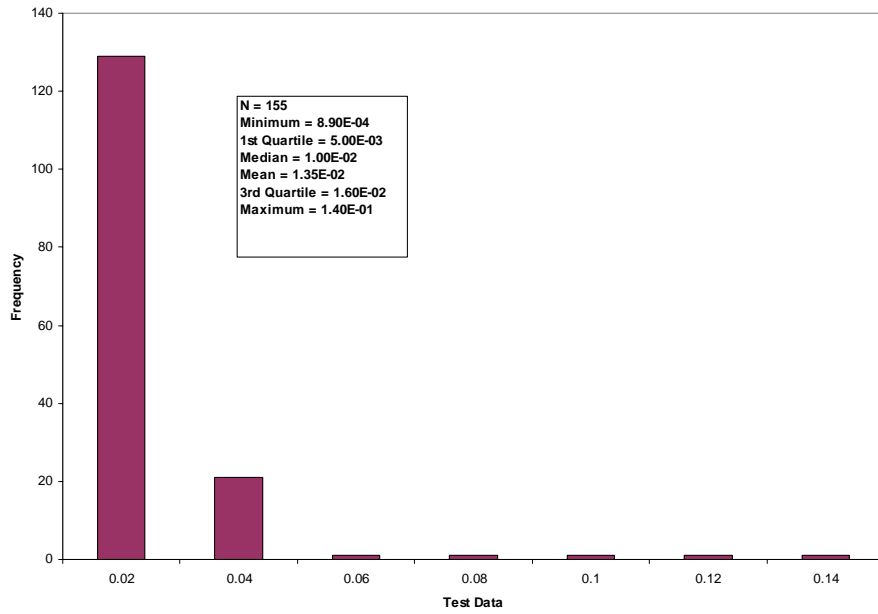


Figure C.4-7. Chapter 11.1 Hot Mix Asphalt Plants, Drum Mix, Filterable Particulate Matter Data.

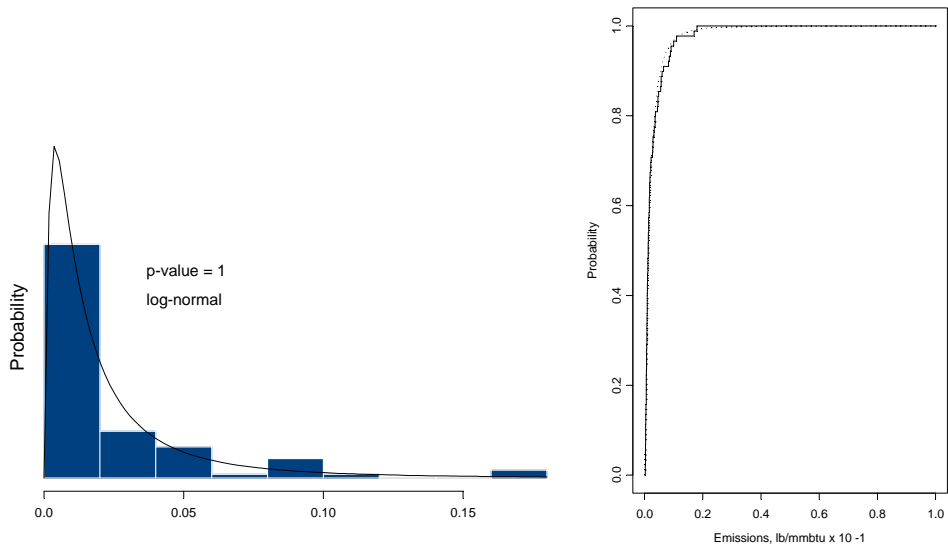
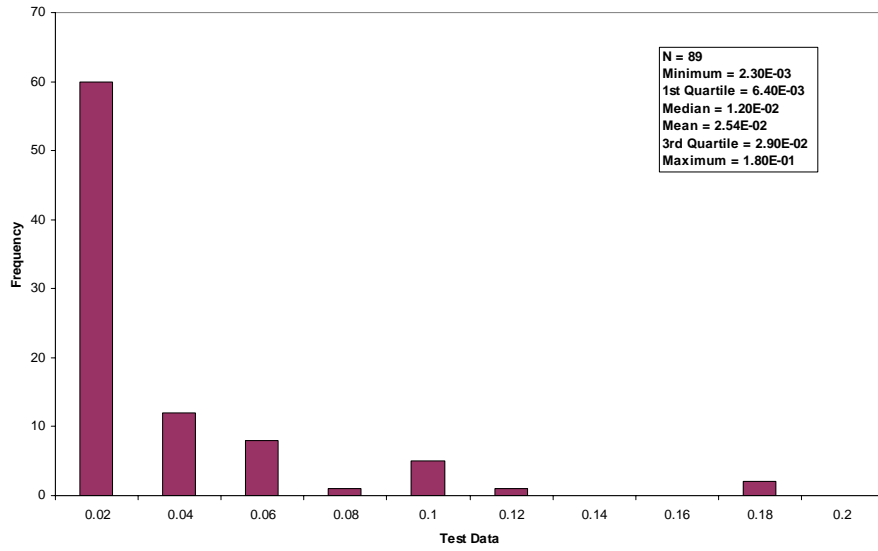


Figure C.4-8. Chapter 11.1 Hot Mix Asphalt Plants, Batch Mix, Filterable Particulate Matter Data.