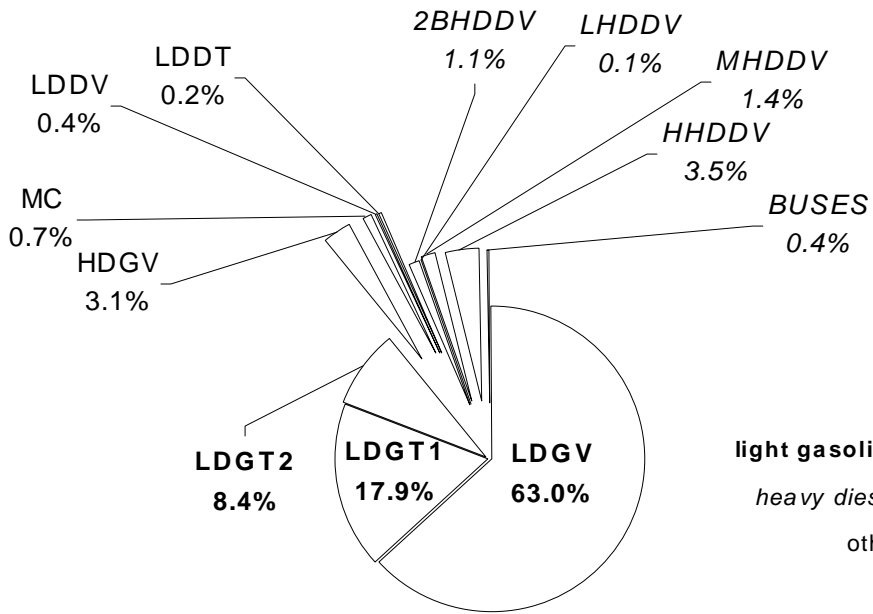


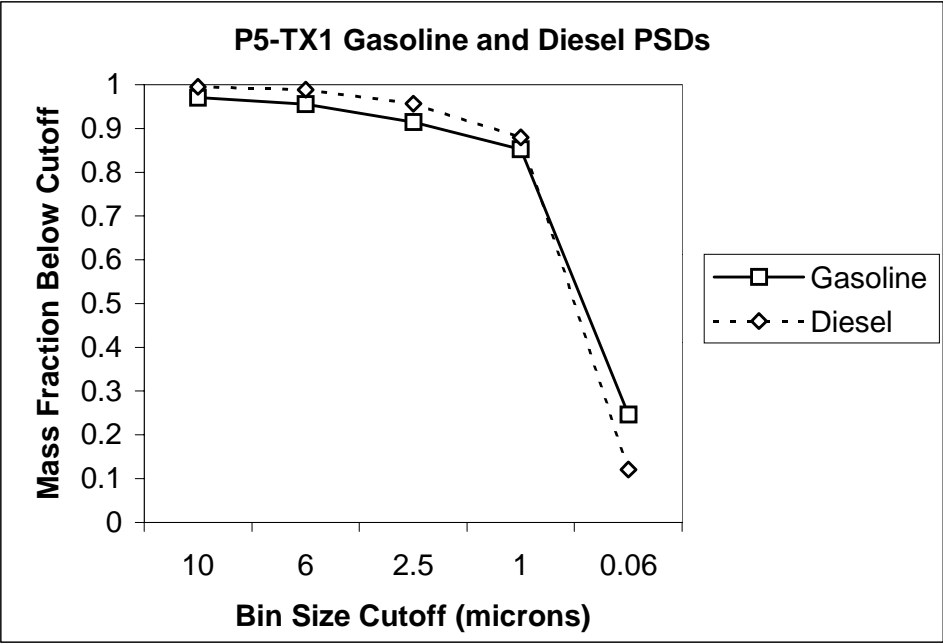
HDDV Model Year Groups (Except Urban Bus)	Federal PM Standards (g/bhp-hr)	Sample Size for This Study
1990 and older	0.60	27
1991 – 1993	0.25	33
1994 and newer	0.10	67
Urban Bus Model Year Groups	(g/bhp-hr)	
1990 and older	0.60	41
1991 – 1992	0.25	53
1993	0.10	33
1994 – 1995	0.07	3
1996 and newer	0.05	24
LDGV Model Year Groups	(g/mi)	
1994 and older	none	659
1995 and newer	0.08	46
LDDV Model Year Groups	(g/mi)	
1994 and older	0.20	52
1995 and newer	0.08	3

Default VMT Mix in PART5-TX1a & MOBILE6



	VMT Fraction
light gasoline	0.8926
heavy diesel	0.0643
other	0.0431

HDDV Model Year Groups (Except Urban Bus)	ZML (g/bhp-hr)	DET1 (g/bhp- hr)/yr	Flex Point Age (yr)	DET2 (g/bhp- hr)/yr
1990 and older	0.35	0.0250	13	0
1991 – 1993	0.18	0.00436	5	0
1994 and younger	0.08	0.0357	3	0
Urban Bus Model Year Groups				
1992 and older	0.30	0.0137	9	0
1993	0.05	0.0133	9	0
1994 – 1995	0.05	0.0133	9	0
1996 and younger	0.06	0.0363	9	0
LDDV/T Model Year Groups	(g/mi)	(g/mi)/yr	(yr)	(g/mi)/yr
1994 and older	0.193	.0376	9	0
1995 and younger	0.135	.00612	9	0
LDGV/T Model Year Groups				
1994 and older	.00497	.00856	10	0
1995 and younger	.00413	.00336	10	0



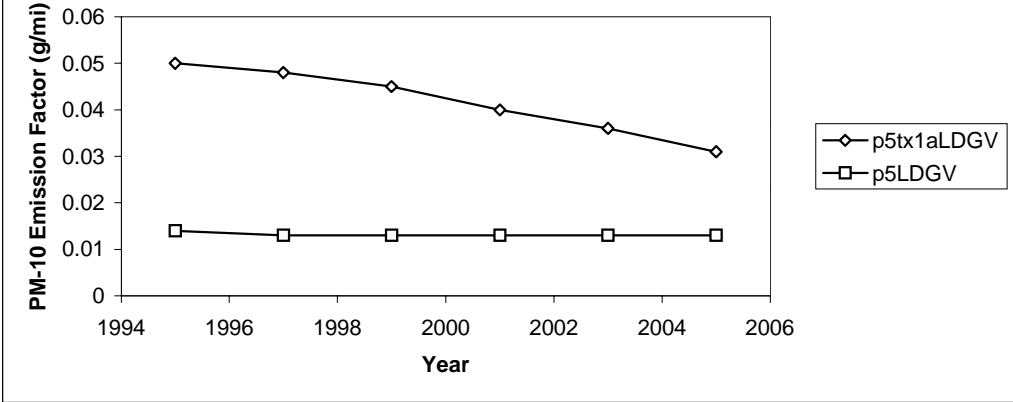
1997 Calendar Year (approx.) LDGV Fleet Emissions as
Determined from Various Sources

Source	Emissions Rate
Predicted by PART5-TX1	0.048 g/mi
Predicted by PART5	0.015 g/mi
Calculated by Whitney (4) (with smokers)	0.119 g/mi ^a
Calculated from Cadle (1) (with smokers) ^b	0.033 g/mi

^a Estimate is probably high. Smoker emissions in the fleet average were apparently not weighted by VMT and are probably over-represented.

^b VMT-weighted average was calculated by ERG from data in the referenced report. Study assumed smoker VMT = 0.9% of LDV Fleet VMT.

P5 vs P5-TX1a: LDGVs



P5-TX1a: Fleet With And Without Hypothetical I/M Program For Excessively Smoking Vehicles

