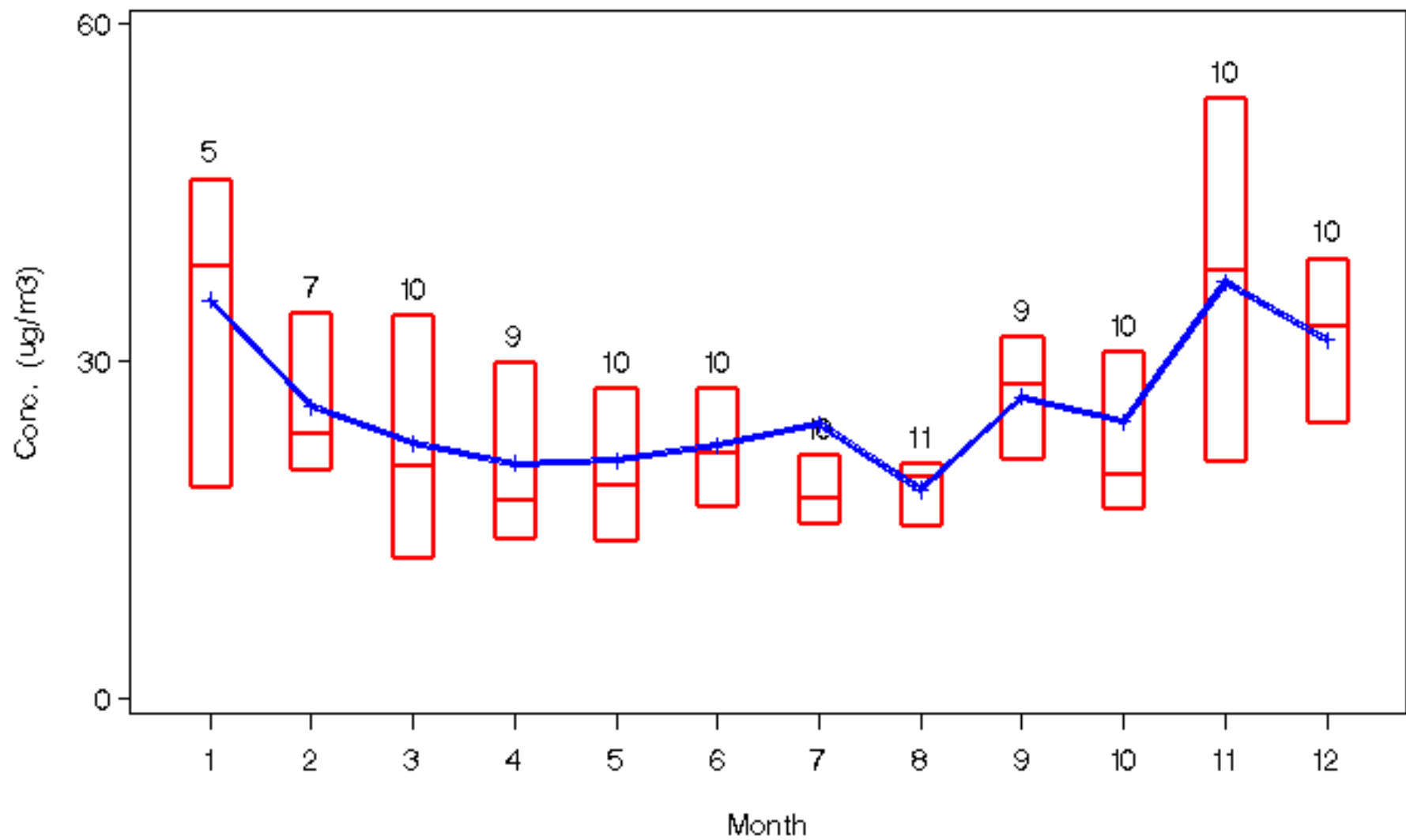
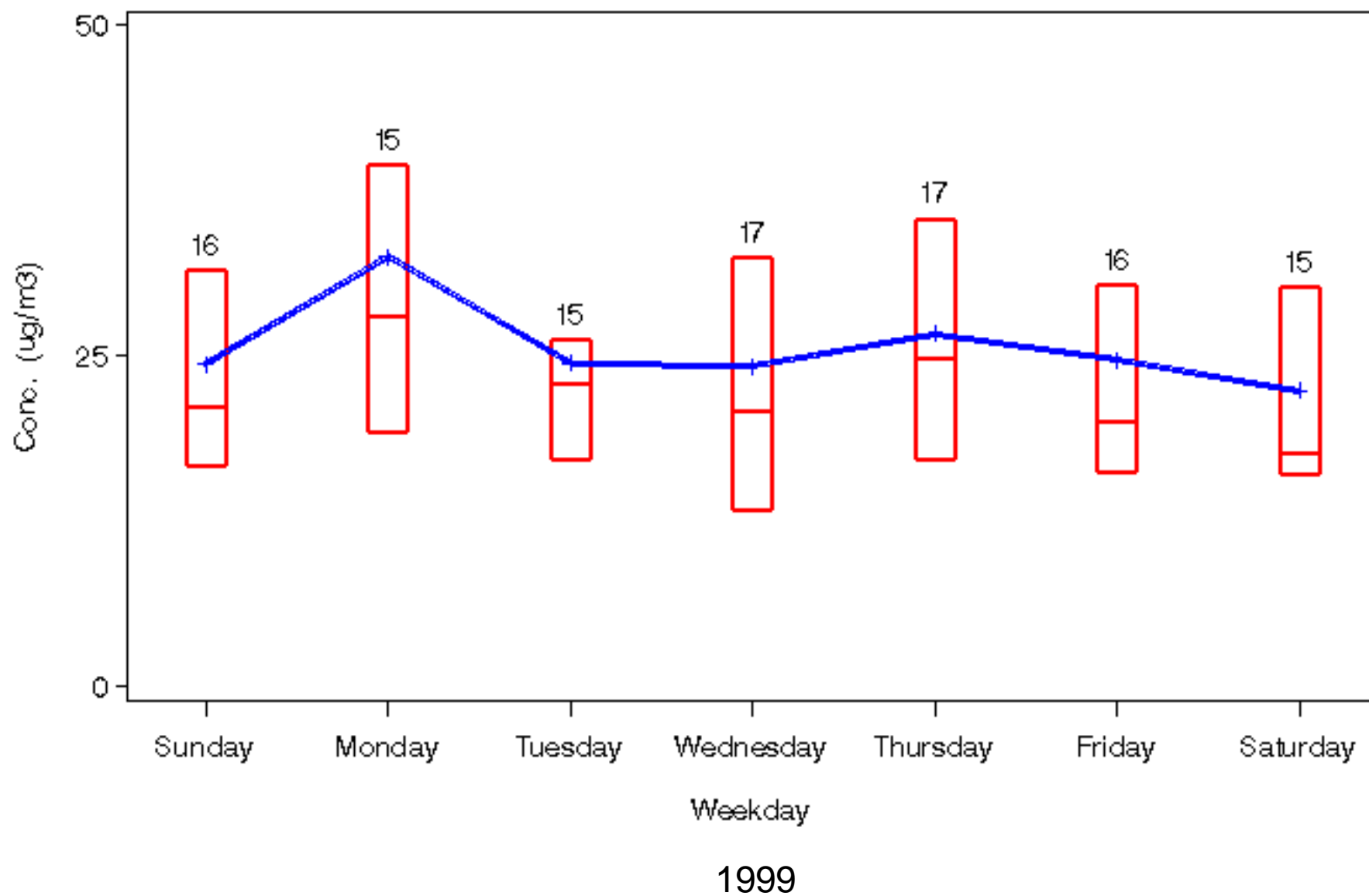


# Temporal Analyses

# Monthly Patterns for a Monitor in PICO RIVERA, CA

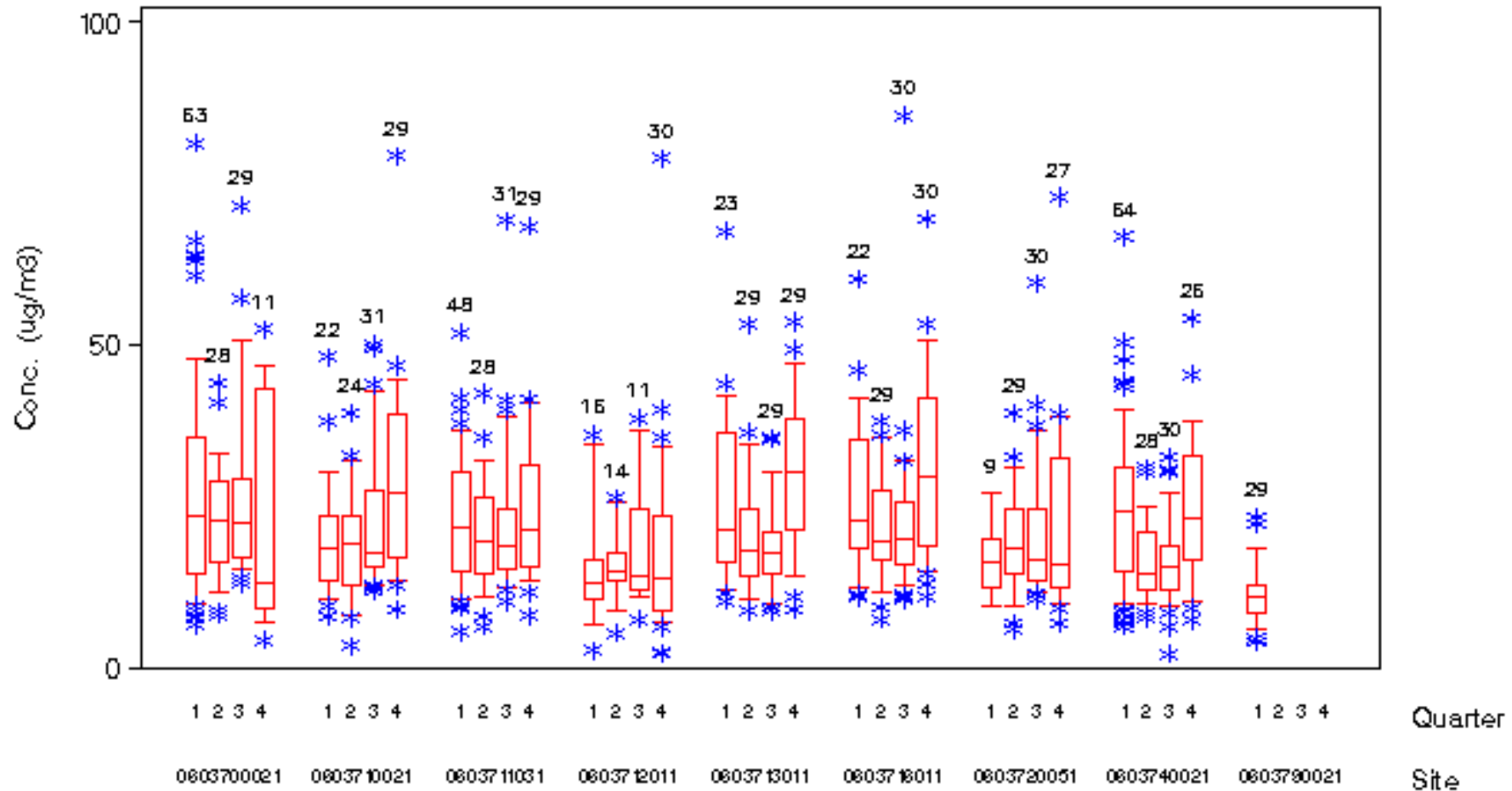


# Weekday Patterns for a Monitor in PICO RIVERA, CA



# Box Plots for PM2.5 Data for 1999

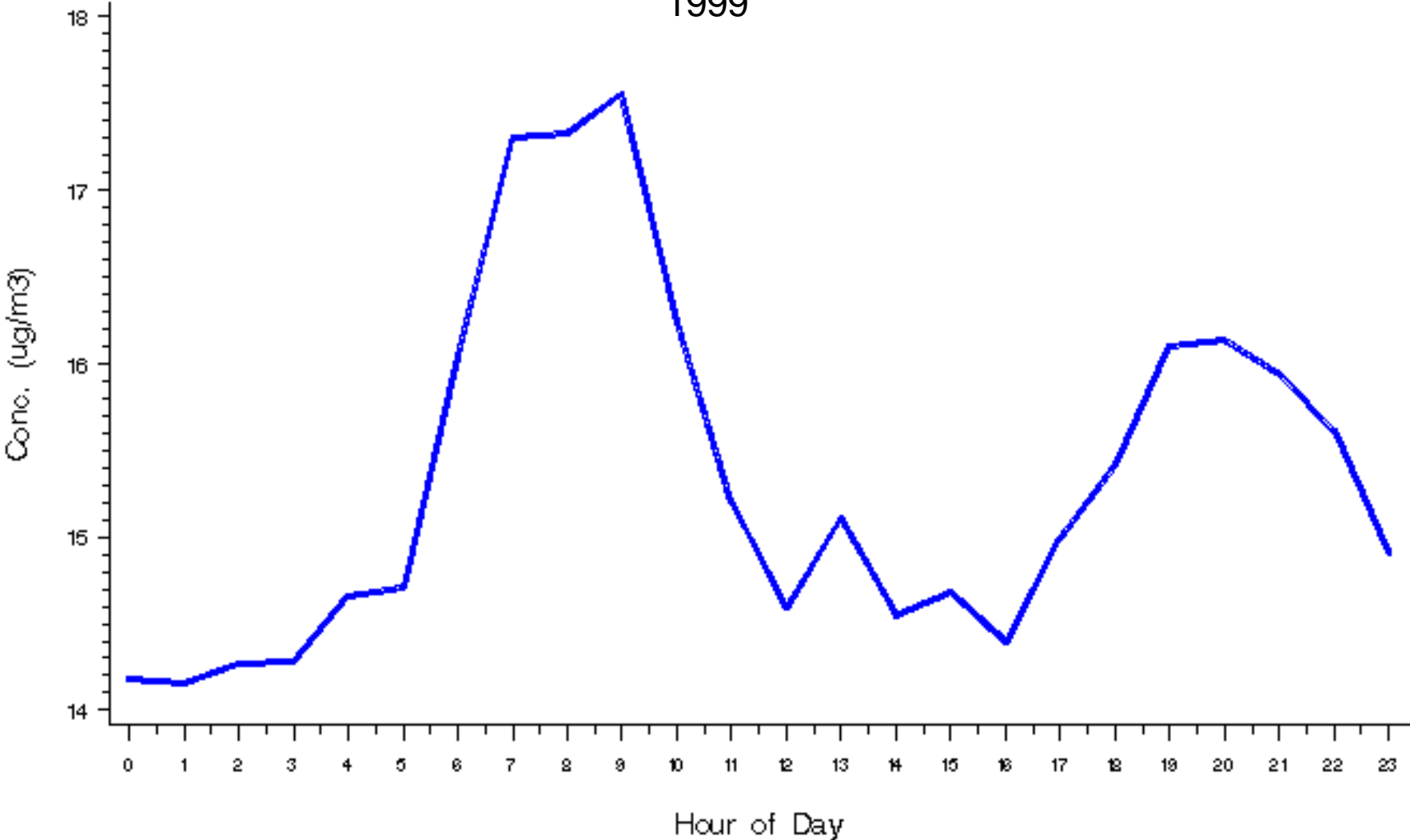
CA: LOS ANGELES—LONG BEACH, CA



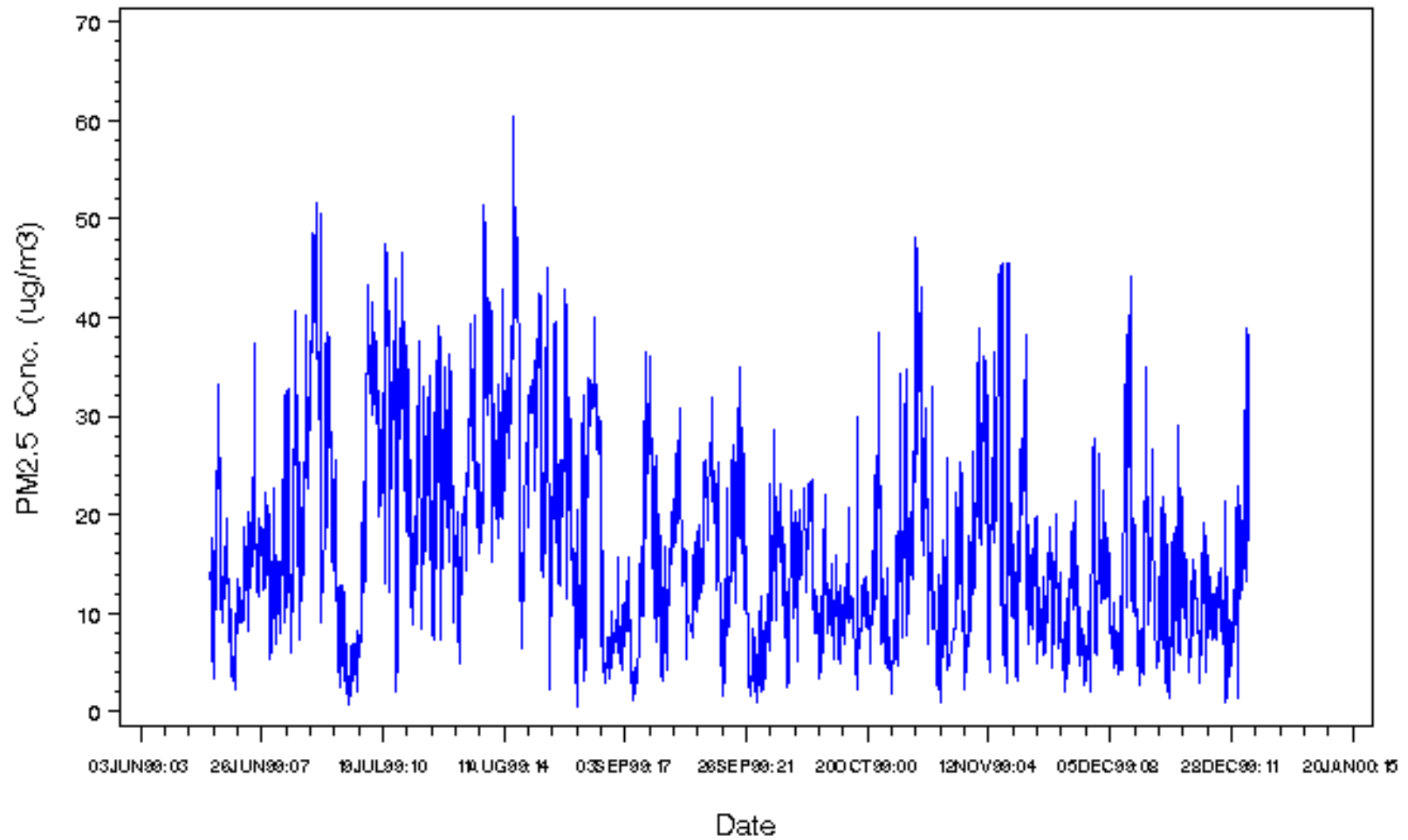
Whiskers: 10th and 90th percentiles  
 Bar: 25th and 75th percentiles

# Diurnal Pattern in Continuous PM2.5 PENSACOLA, FL

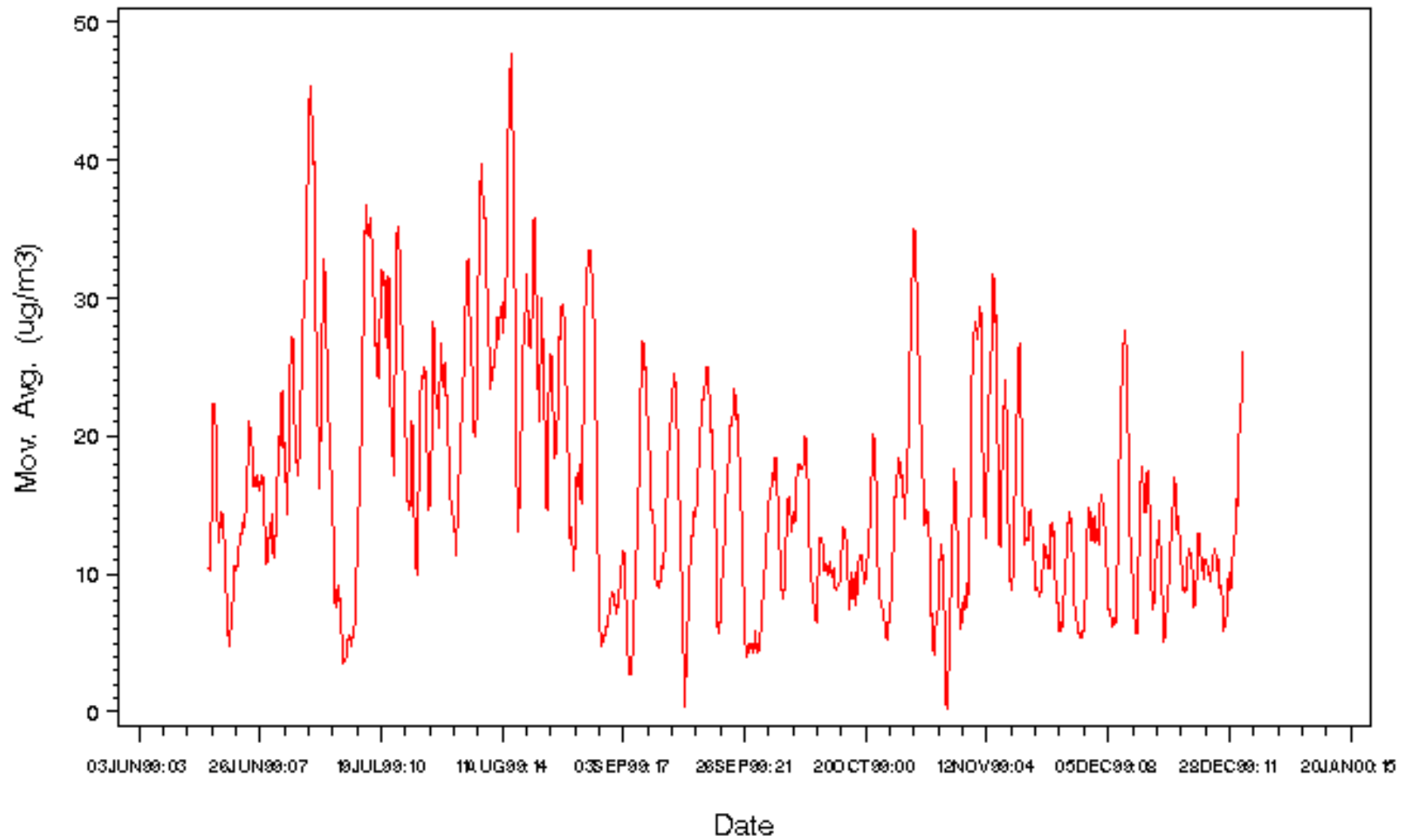
1999



# Time Series for Continuous PM2.5 WINSTON-SALEM, NC



# Time Series for Continuous PM2.5 WINSTON-SALEM, NC

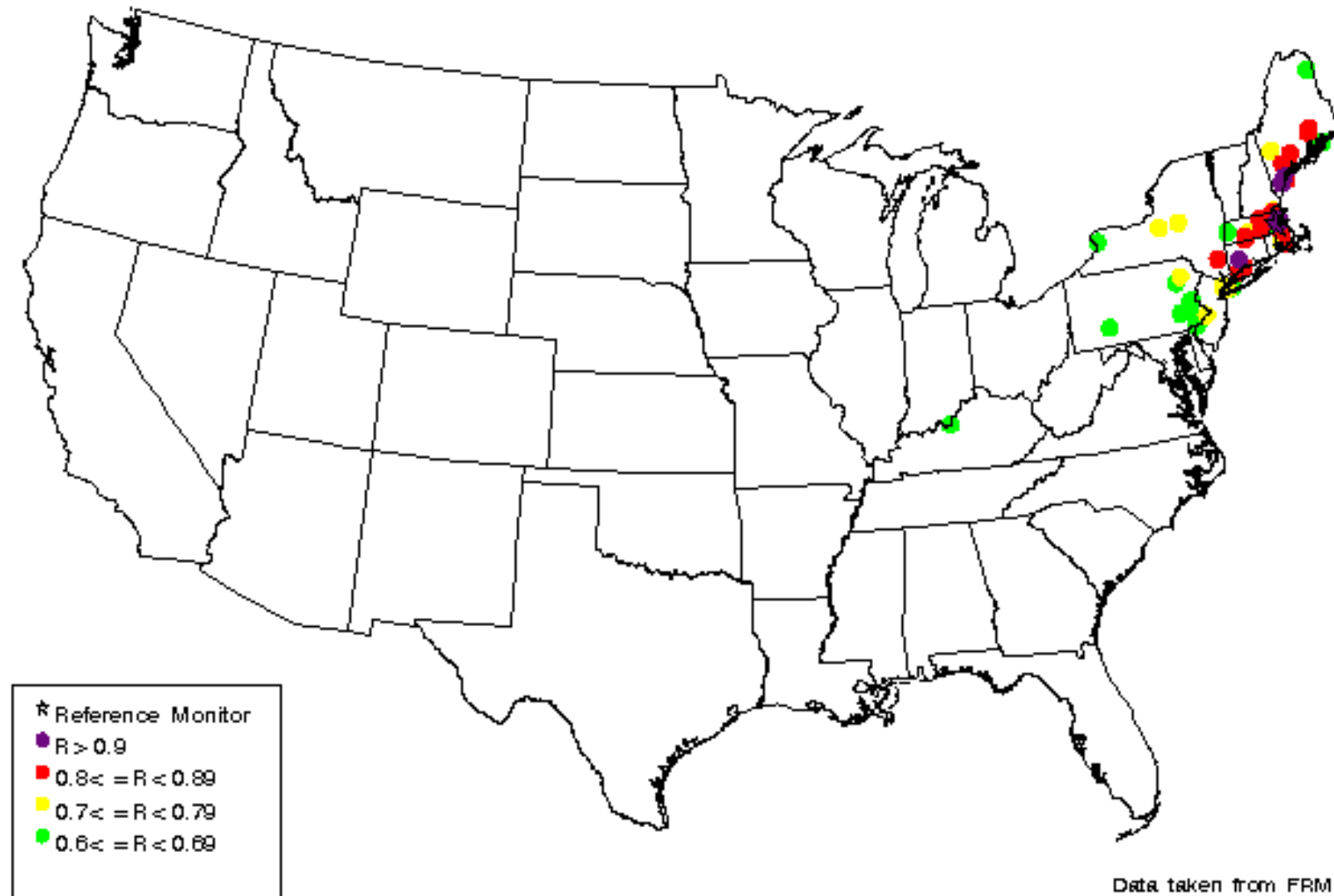


# **Spatial Analyses**



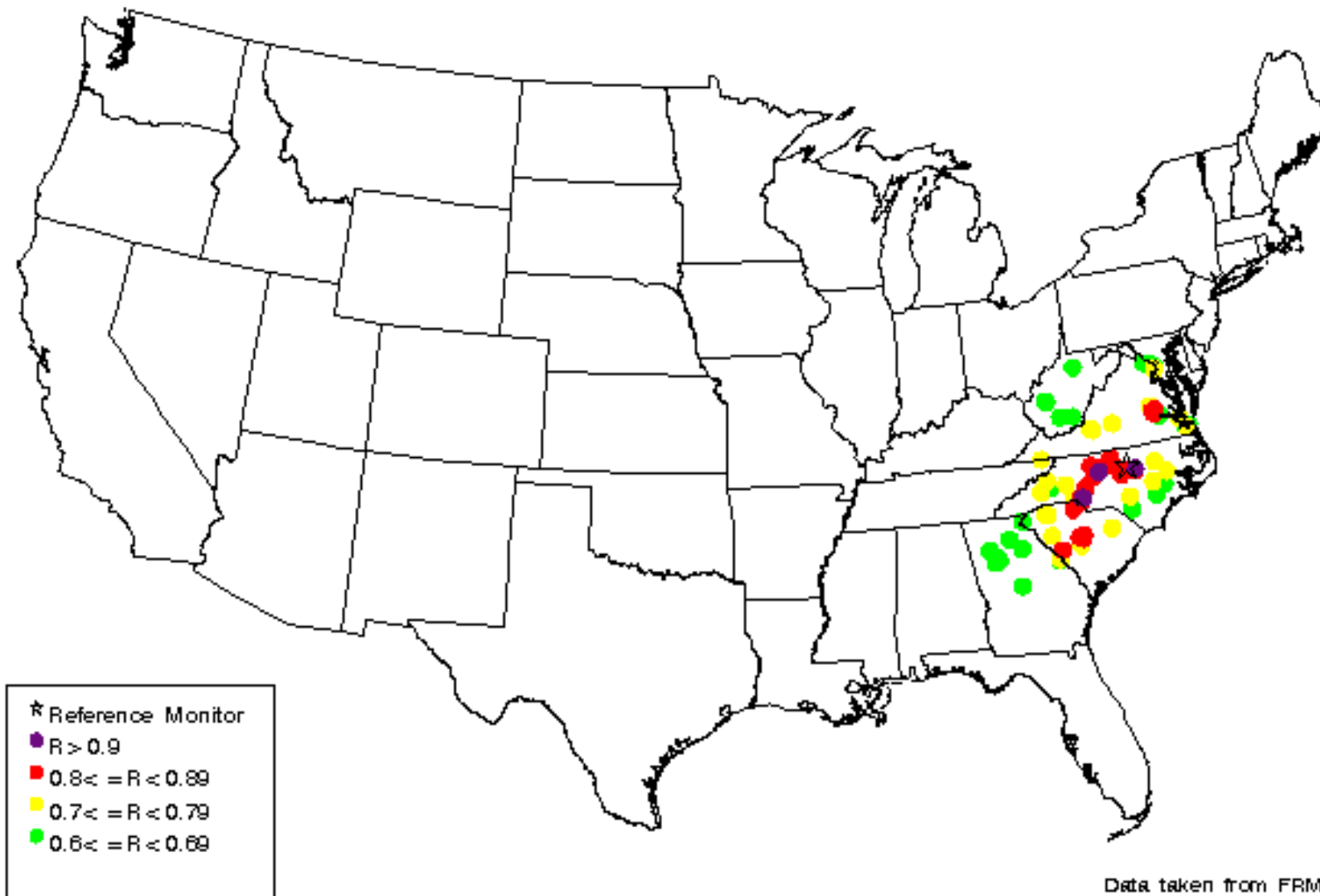
# PM2.5 Correlation Map for a Monitor in Boston, MA

Site ID= 2502500271



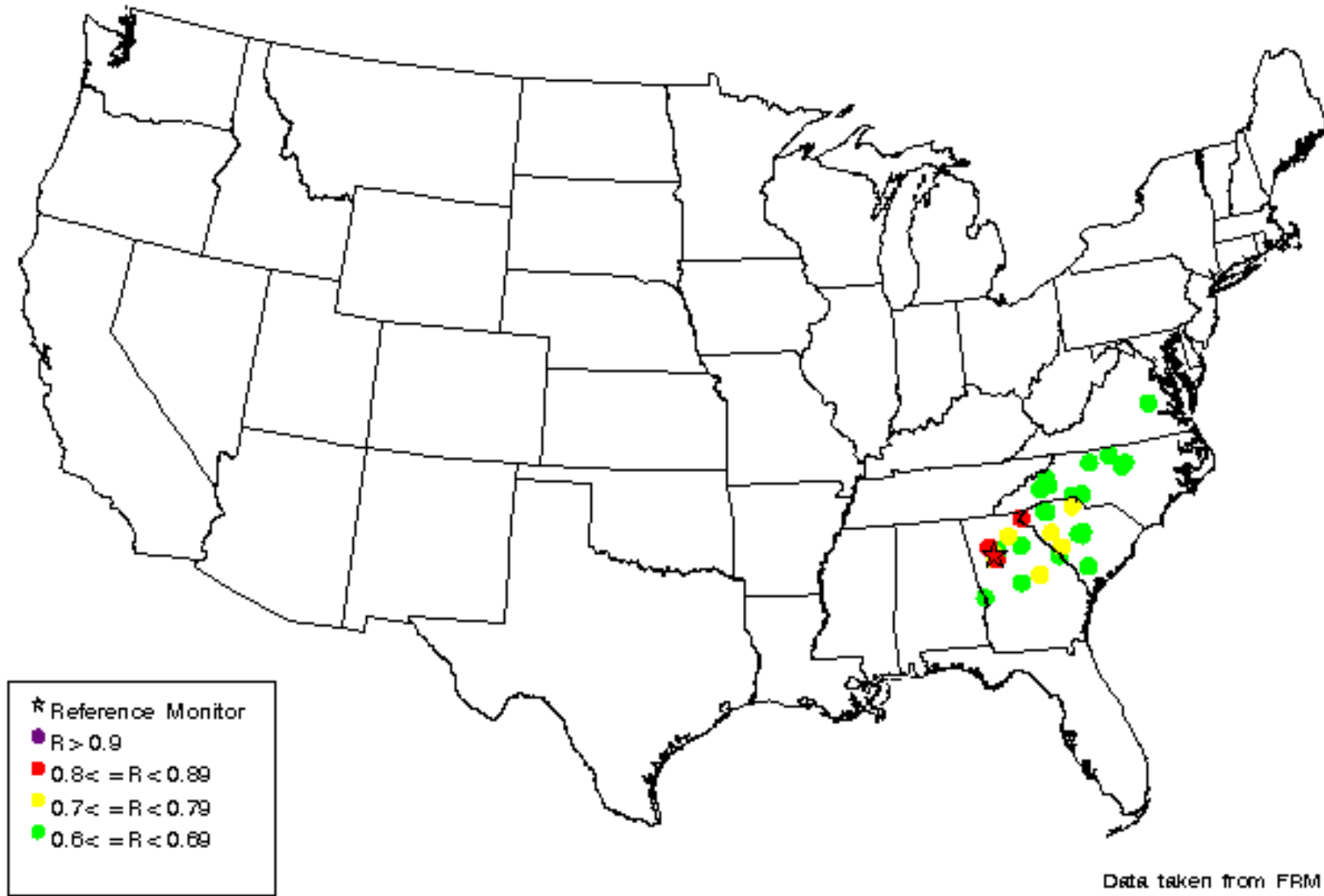
# PM2.5 Correlation Map for a Monitor in Durham, NC

Site ID= 3706300011

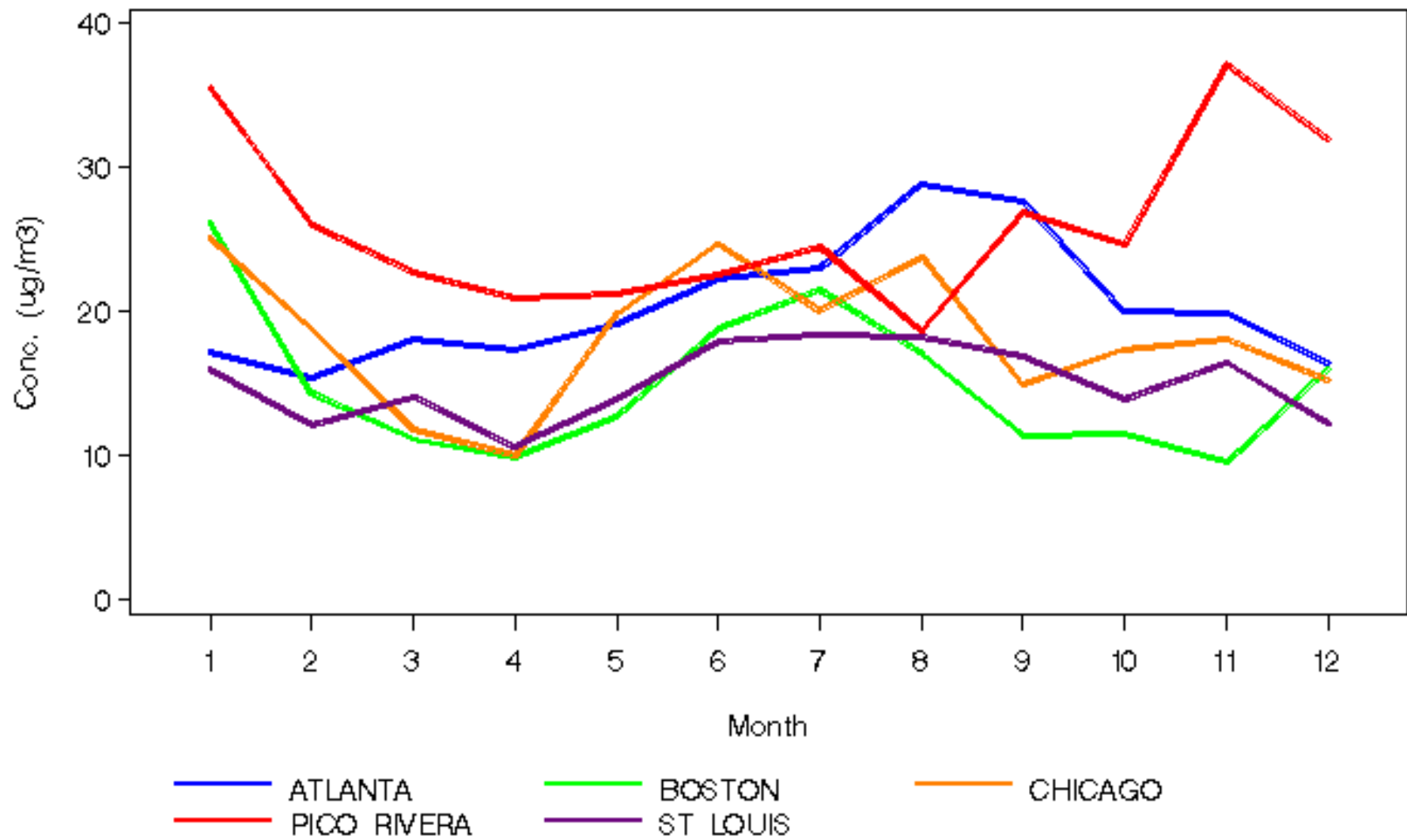


# PM2.5 Correlation Map for a Monitor in Atlanta, GA

Site ID= 1312100321



# Monthly Patterns for Monitors in Major Metropolitan Areas 1999

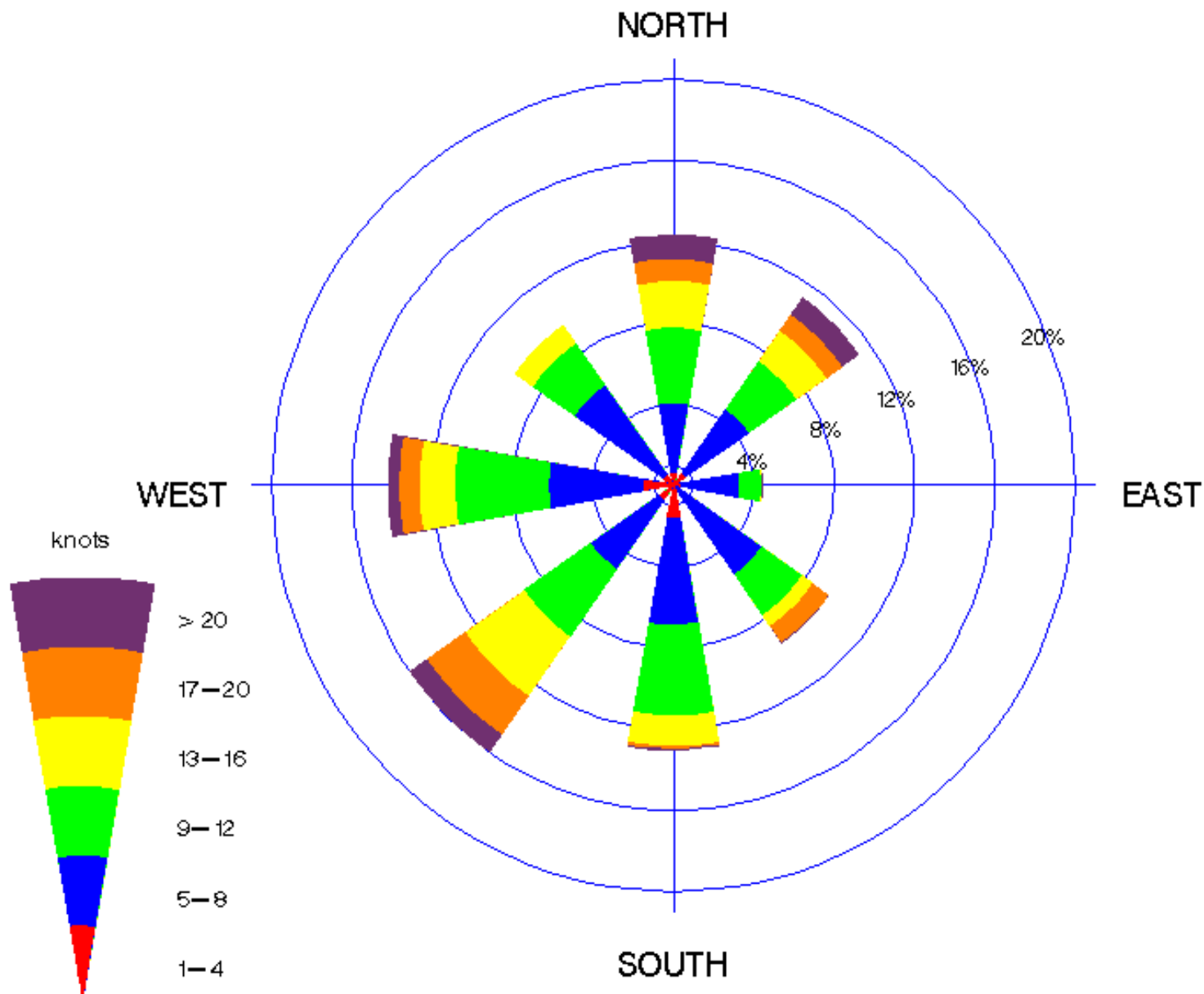


# **Compositional Analyses**

# Kenosha Wind Rose PM<sub>2.5</sub>

(1/1/99-12/29/99)

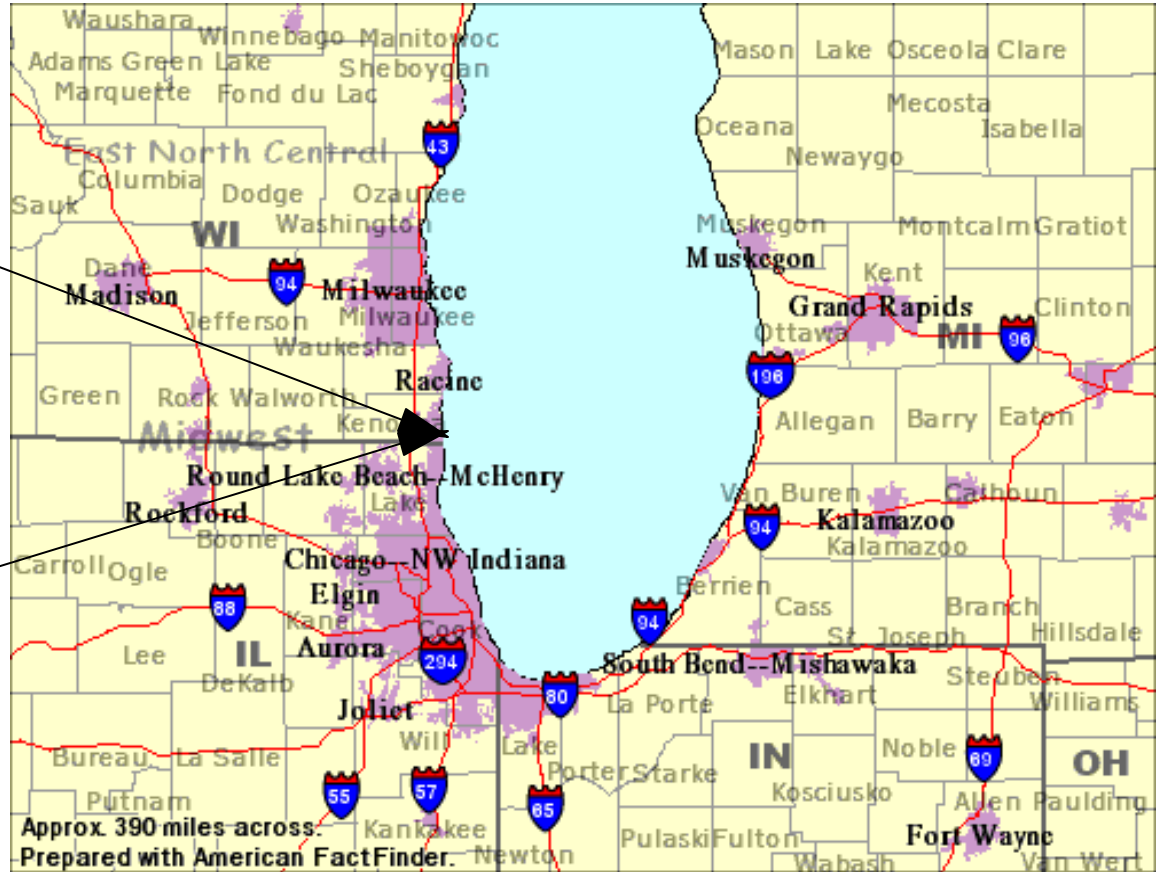
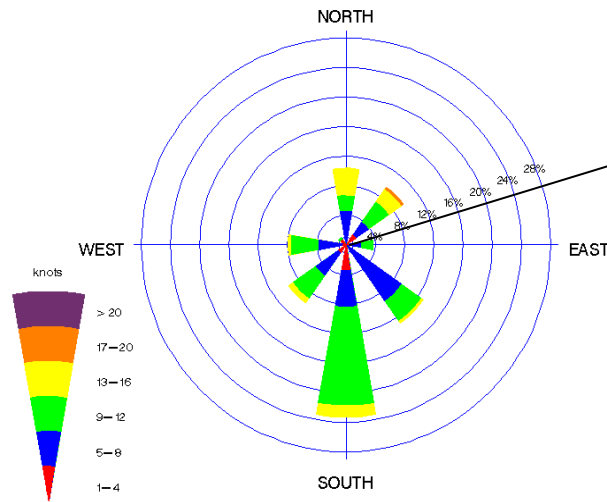
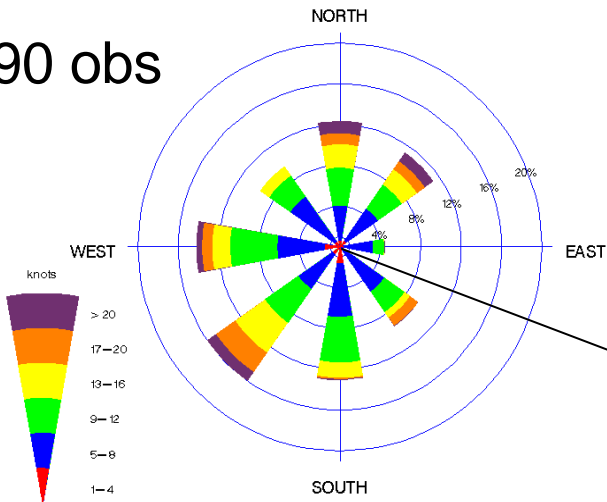
Based on days PM<sub>2.5</sub> measured: 90 obs.



# Kenosha, WI (1/1/99-12/29/99)

## PM<sub>2.5</sub>

90 obs

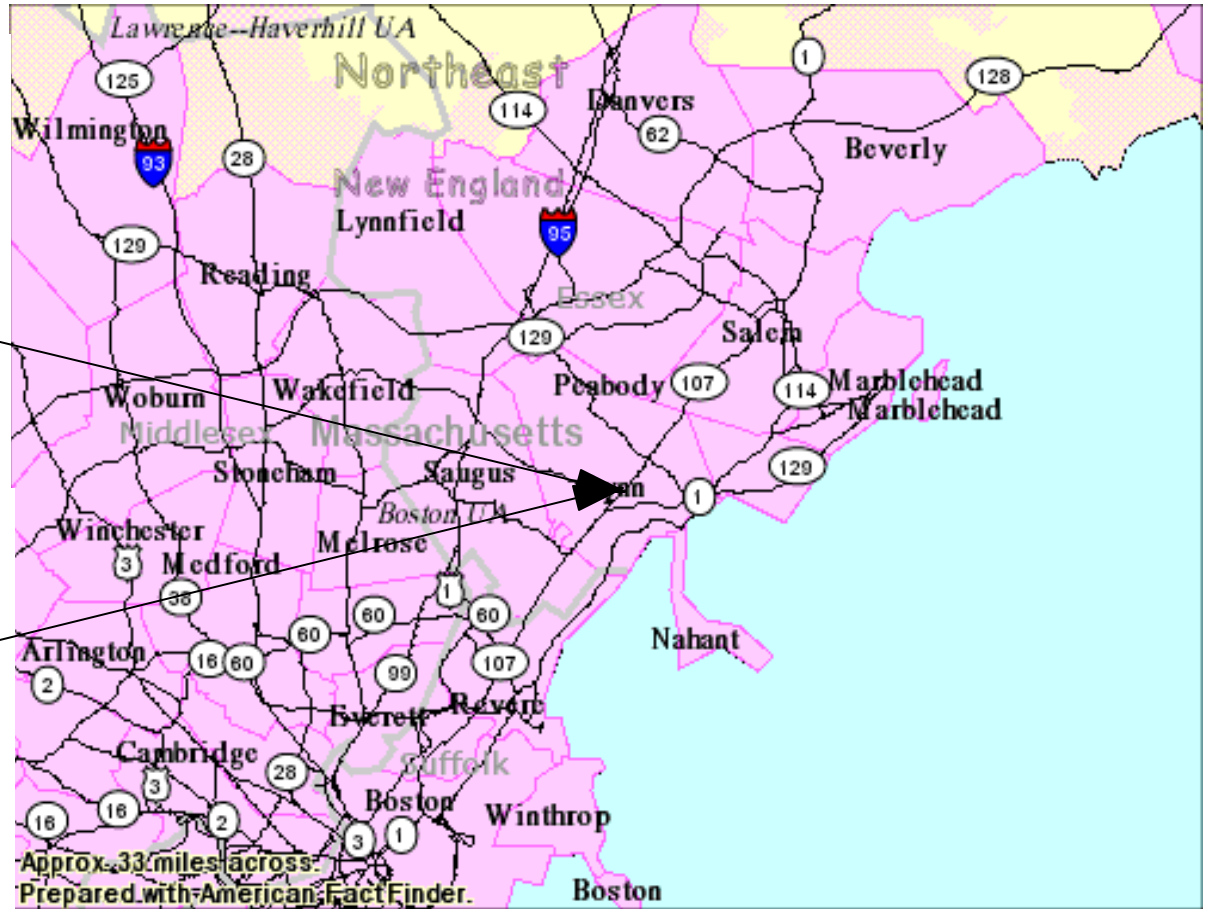
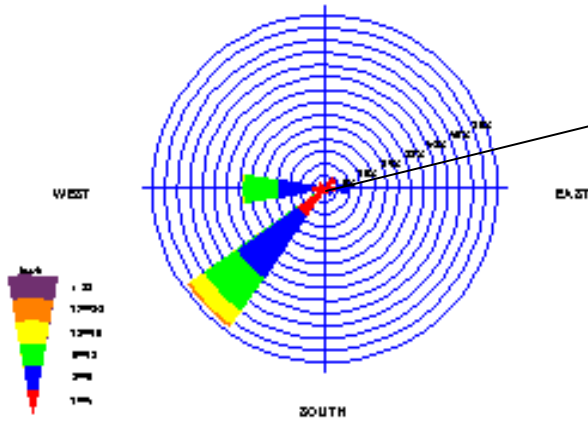
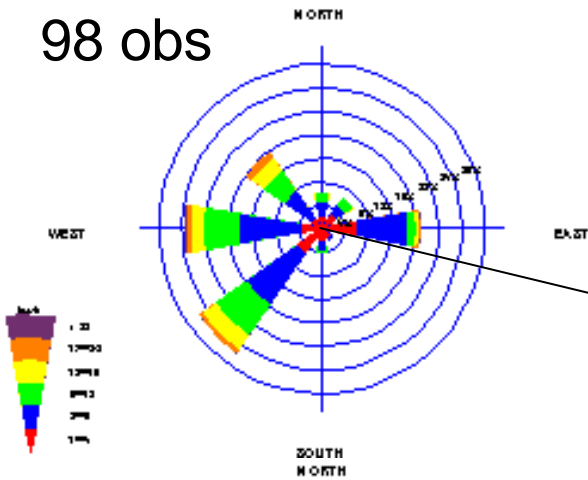


10 obs  $\geq$  90th pctl

# Lynn, MA (1/6/99-12/29/99)

PM<sub>2.5</sub>

98 obs

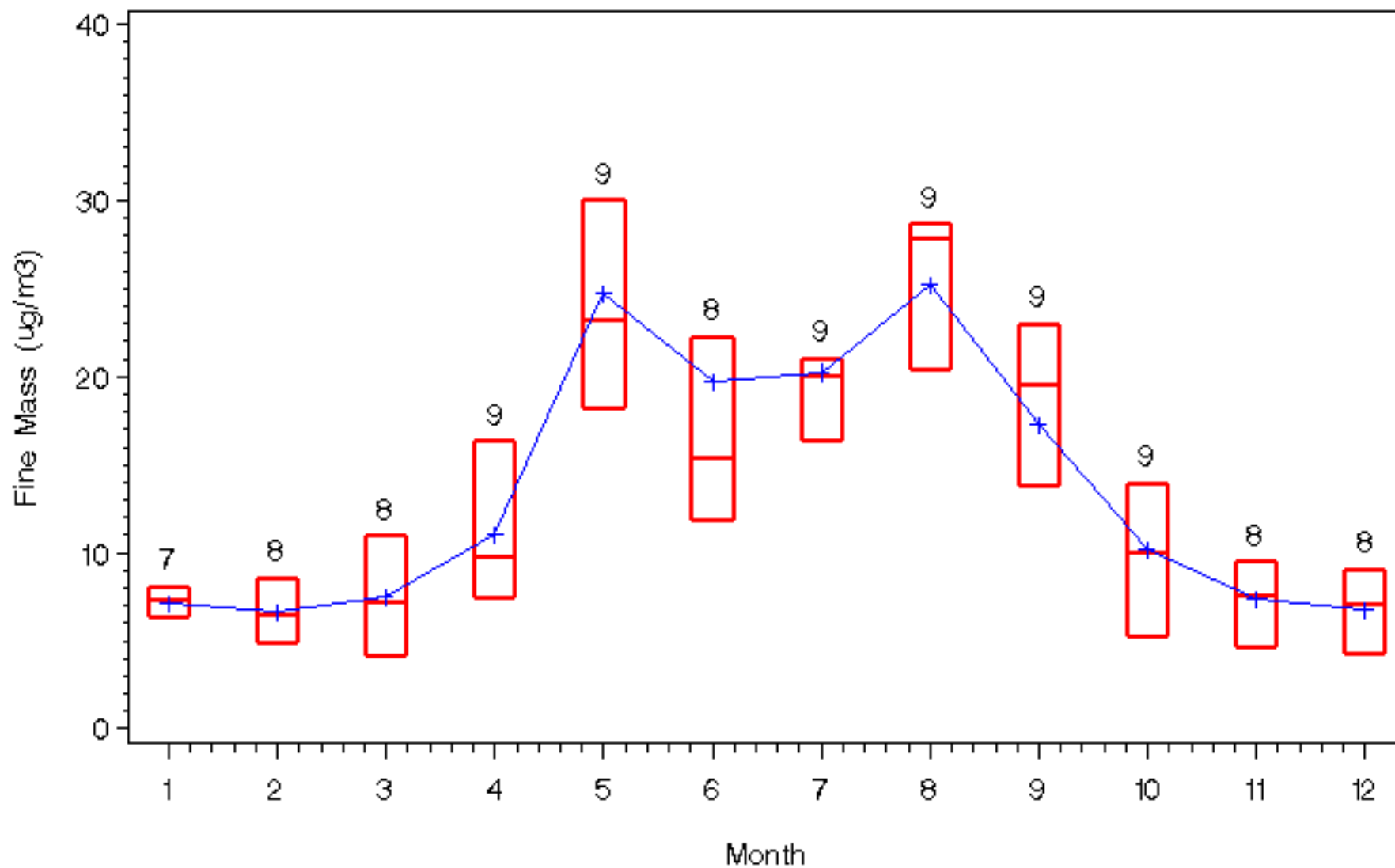


10 obs  $\geq$  90th pctl



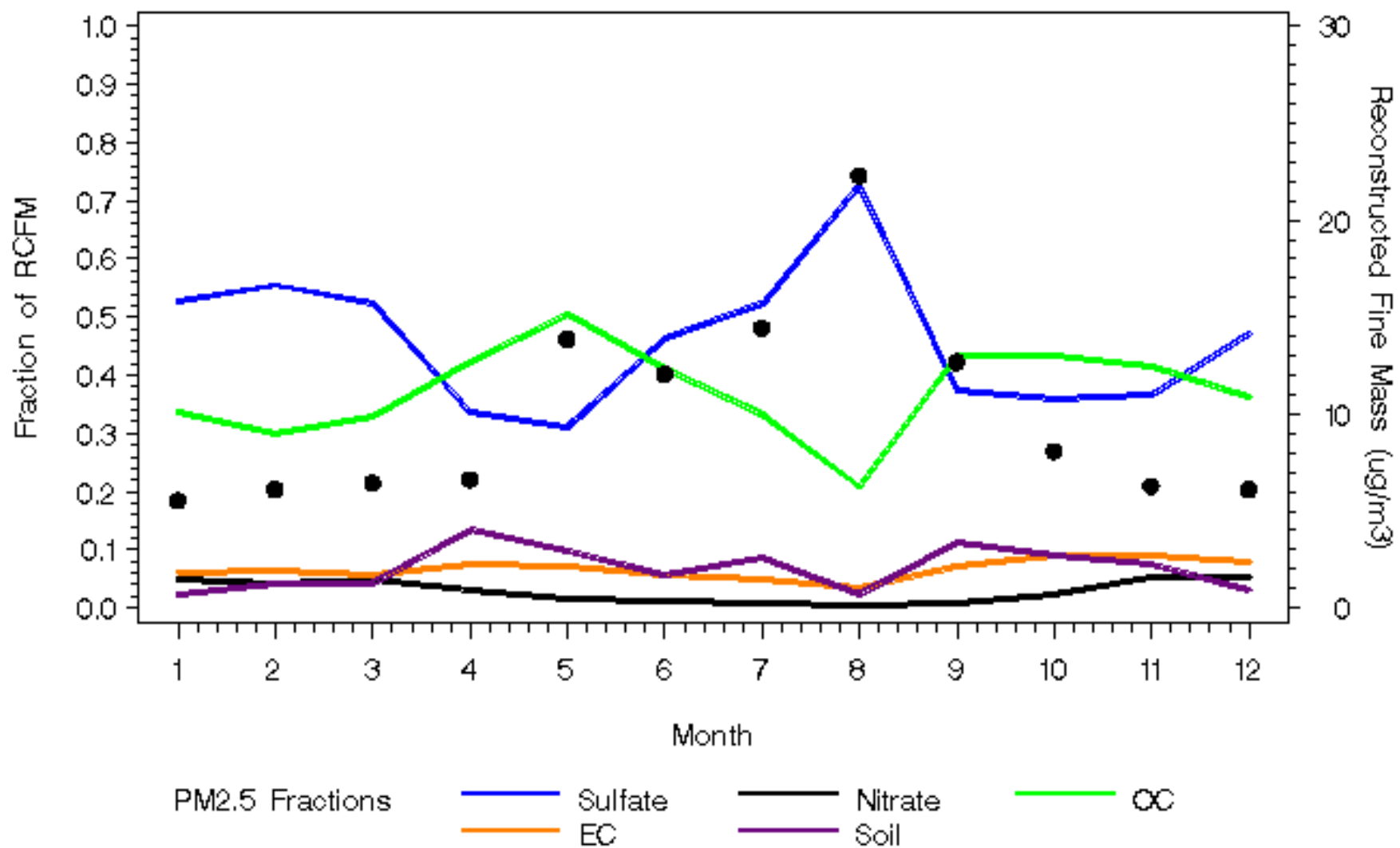
# Monthly Patterns

Great Smoky Mountains National Park: 1998



# Monthly Patterns

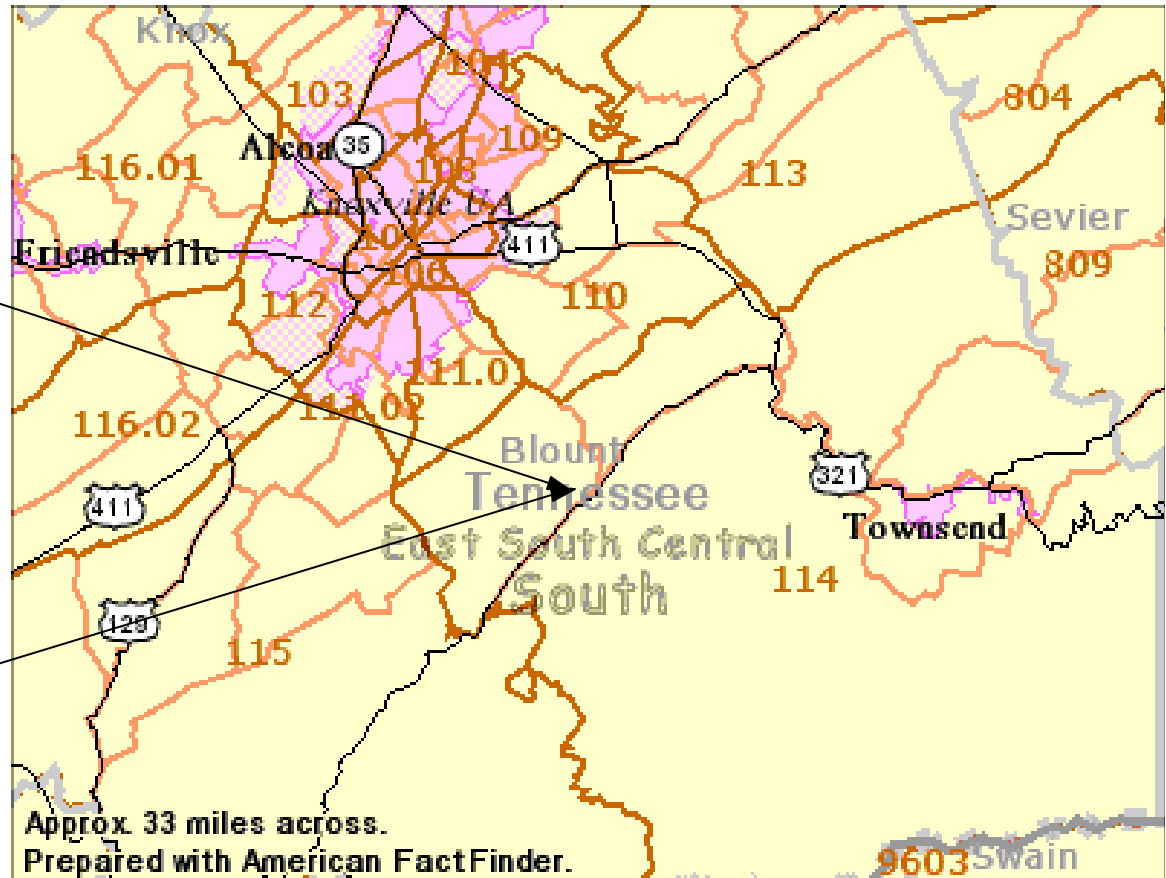
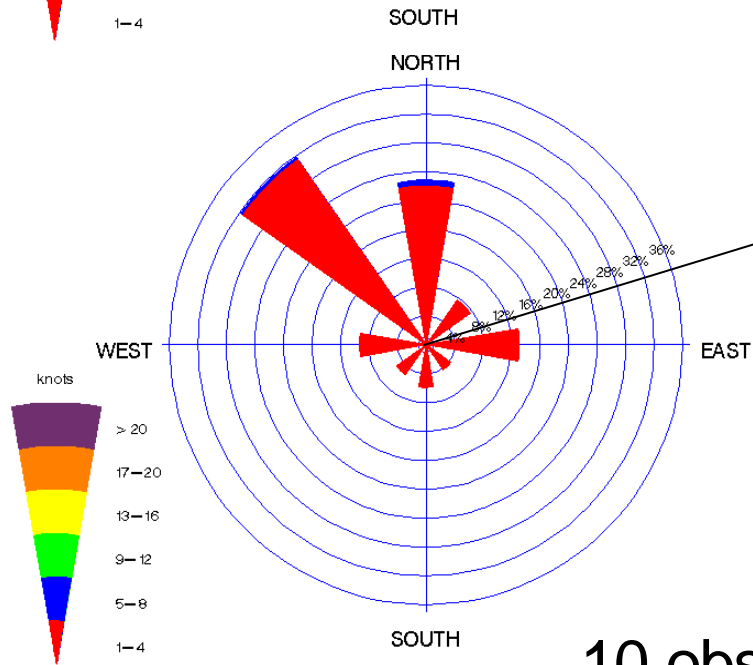
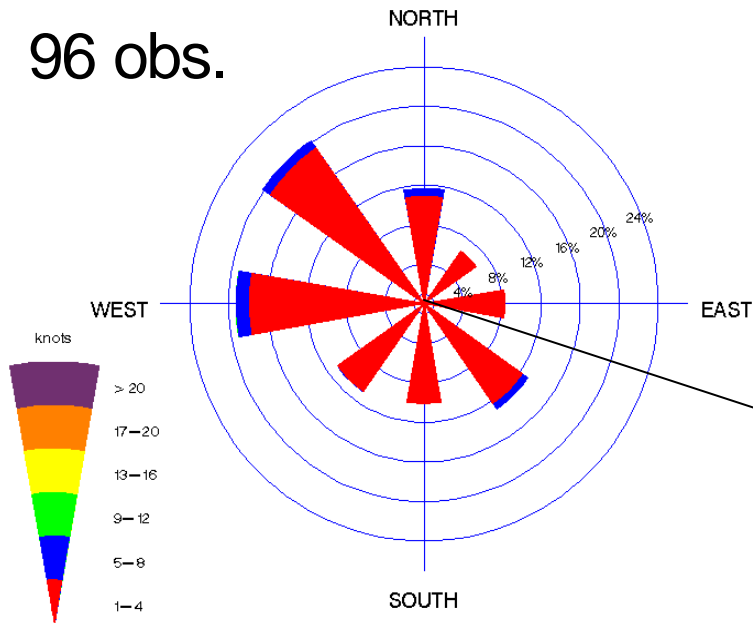
Great Smoky Mountains National Park: 1998



# Great Smoky Mountains (1/3/98-12/30/98)

## PM<sub>2.5</sub>: Sulfate

96 obs.

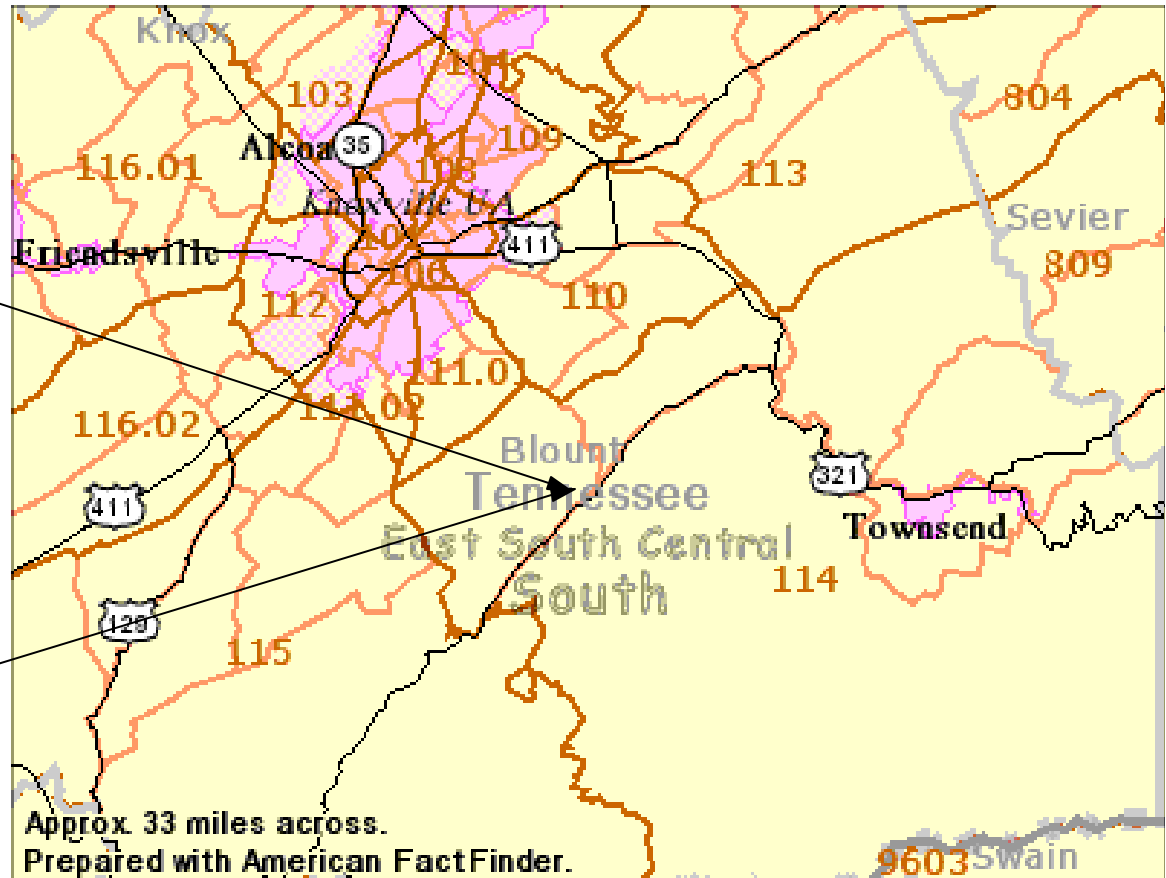
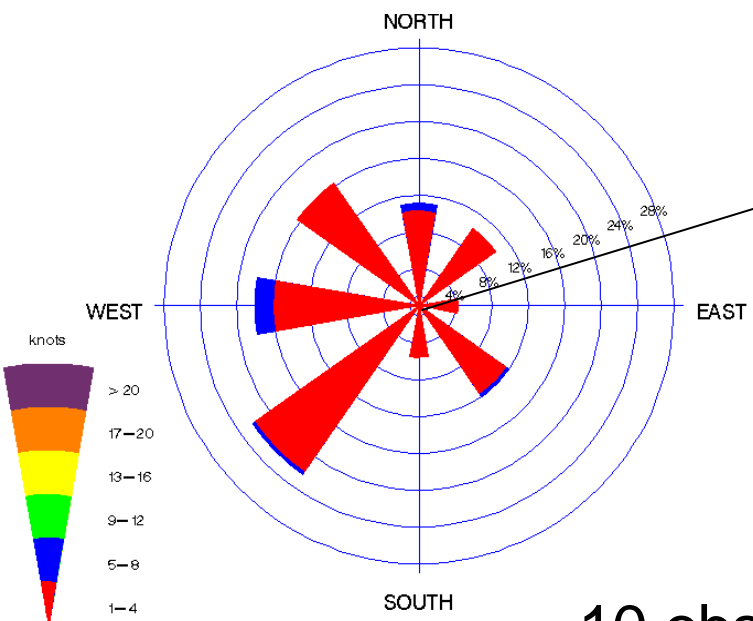
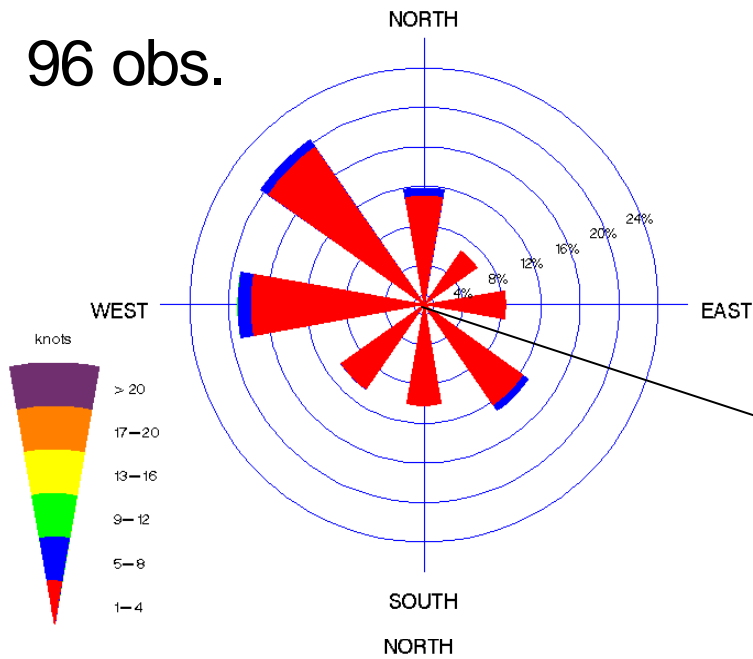


10 obs.  $\geq$  90th pctl

# Great Smoky Mountains (1/3/98-12/30/98)

## PM<sub>2.5</sub>: Nitrate

96 obs.

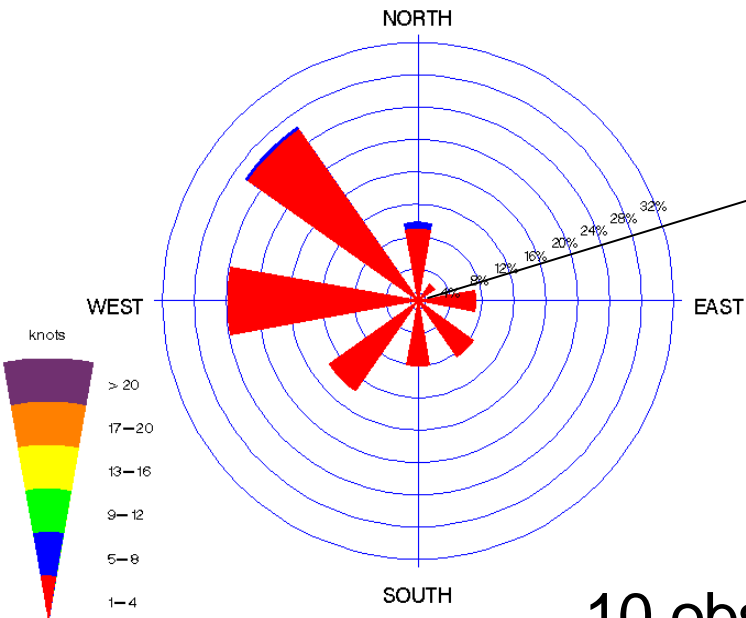
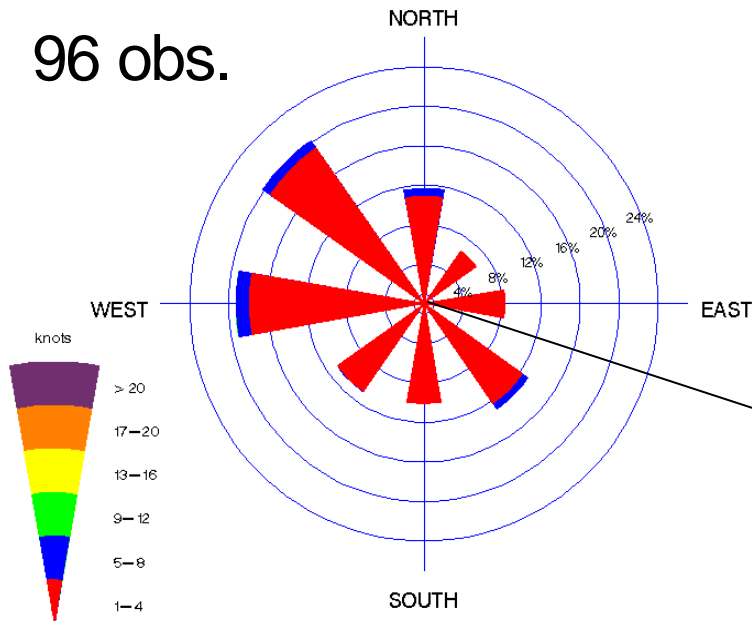


10 obs.  $\geq$  90th pctl

# Great Smoky Mountains (1/3/98-12/30/98)

## PM<sub>2.5</sub>: Organic Carbon

96 obs.



10 obs.  $\geq$  90th pctl

