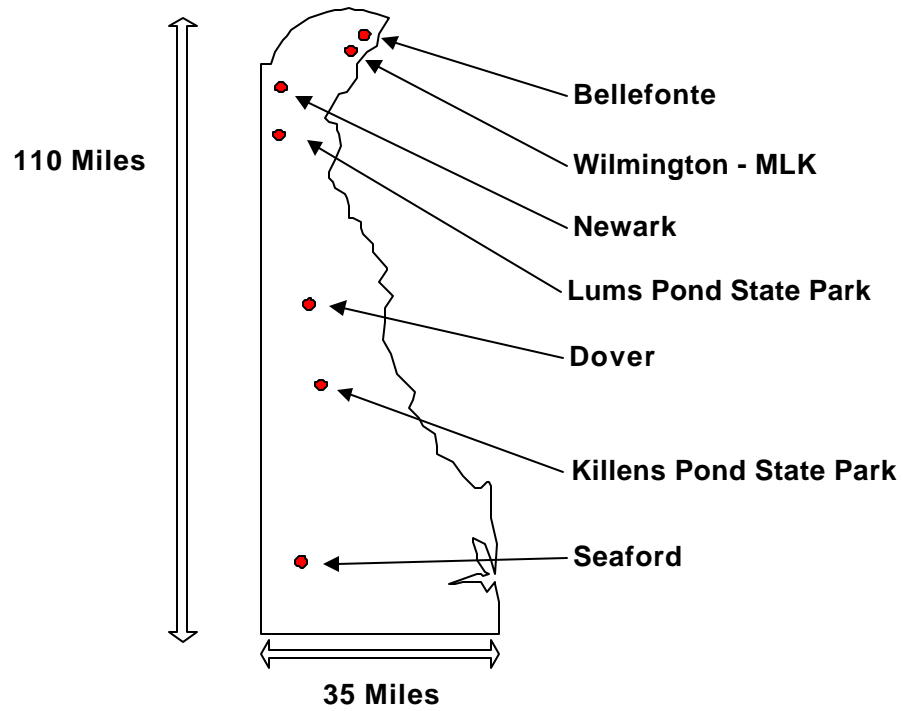
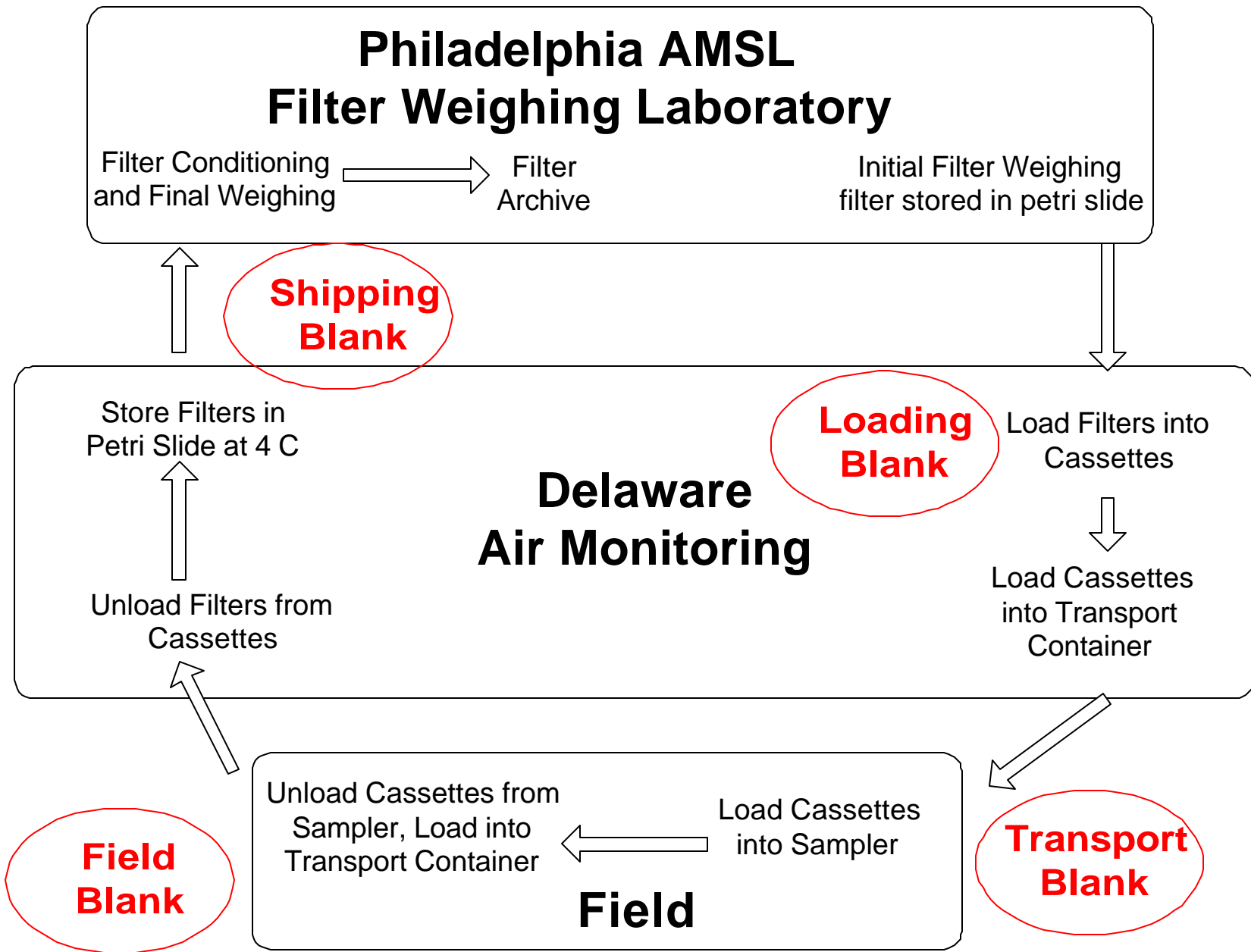


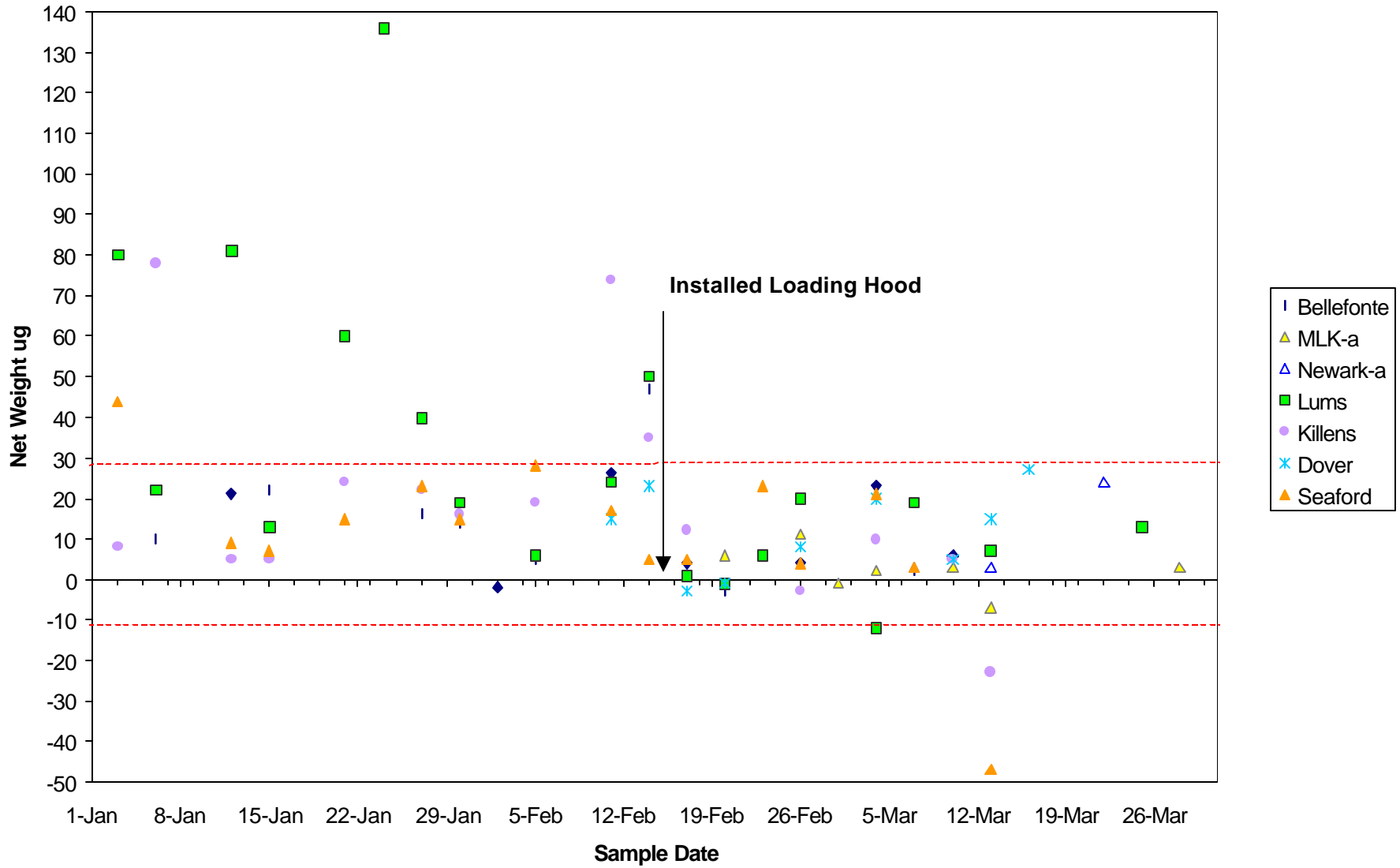
Locations of Delaware PM_{2.5} Monitoring Stations 1999



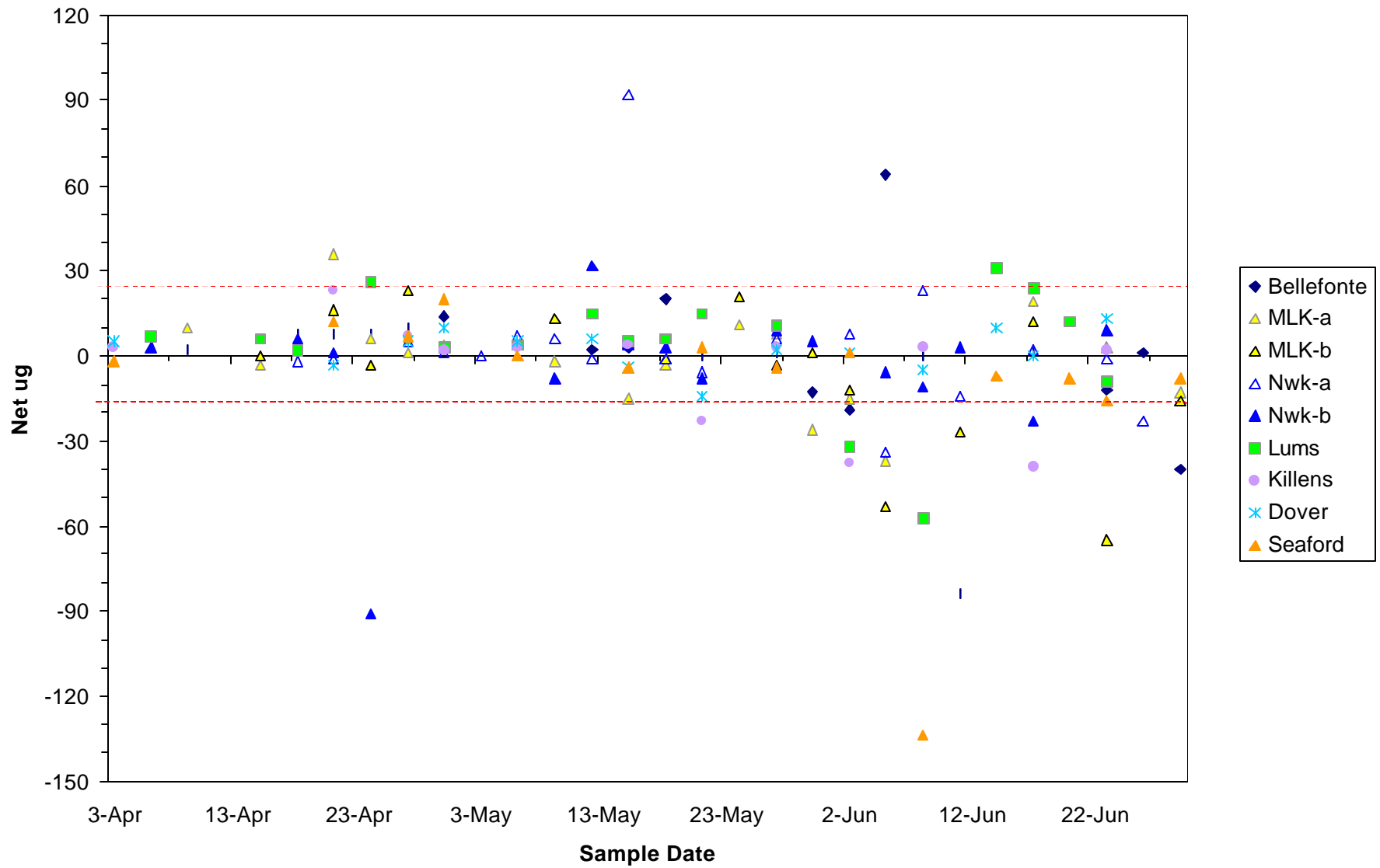


February 2000 PM2.5 - Results in ug/m3											
Every Third Day Sampling											
Date	Blifte	MLK-a	MLK-b	Nwrk-a	Nwrk-b	Lums	Killens	Dover	Seaford	Avg	Std. Dv.
3-Feb	23.4	32.6		Tm		20.4	20.1	20.3	21.2	23.0	4.9
6-Feb	18.4	f	17.7	m	18.1	13.9	17.5	15.8	18.8	17.2	1.7
9-Feb	23.1	25.1		20.6		18.7	17.7	18.5	19.4	20.4	2.7
12-Feb	10.6	c		13.3	12.8	9.9	10.7	10.2	11.1	11.2	1.3
15-Feb	14.4	c		15.5		b	12.8	12.4	17.9	14.6	2.2
18-Feb	13.0	14.6	15.7	12.0	11.3	b	7.7	8.6	12.2	11.9	2.7
21-Feb	23.4	28.1		26.5		b	20.3	20.3	22.1	23.5	3.2
24-Feb	26.8	27.0	26.5	18.0	17.4	15.7	15.2	15.5	13.2	19.5	5.6
27-Feb	15.5	15.5		17.2		10.7	8.5	f	f	13.5	3.7
*11-Feb						36.4					
Avg.	18.7	23.8	20.0	17.6	14.9	18.0	14.5	15.2	17.0		
Max.	26.8	32.6	26.5	26.5	18.1	36.4	20.3	20.3	22.1		
Min.	10.6	14.6	15.7	12.0	11.3	9.9	7.7	8.6	11.1		
Completeness											
	100%	76%	NA	83%	NA	100%	100%	89%	89%		
Validity flags						Null data codes					
	= Possible contamination					a	No filter available				
	= High field and/or travel blank					b	program malfunction				
	= Sampler error flag (Tm, FV, Flo) - invalid data					c	electrical problem				
	= Sampler error flag (FTp, Itp, PF) - valid data					d	filter damaged				
	= Exceeded 96 hour sample retrieval time limit					e	run invalidated				
	= Exceeded time limit for weighing					f	carousel jammed				
	= Filter stuck to support screen					g	data lost in lab				
	= Download problem, manual data entry					h	stuck to petri slide/torn				
	= Filter lot with significant negative weight changes					i	opr. error - not programmed				
*	= Make-up sample					j	unknown - no info. available				
						k	laboratory error				
						L	down for maintenance				

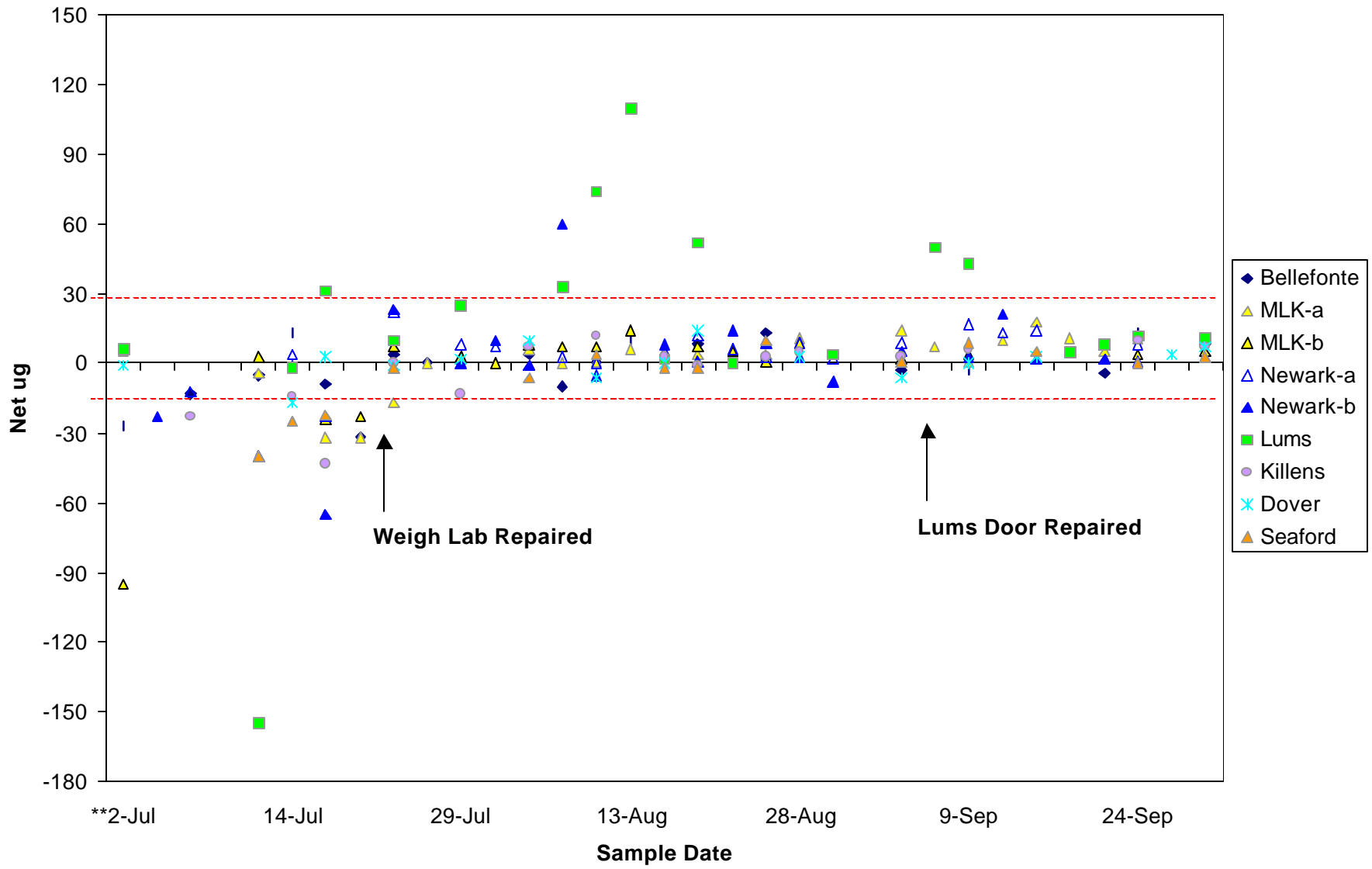
DE Field Blanks 1Q 1999



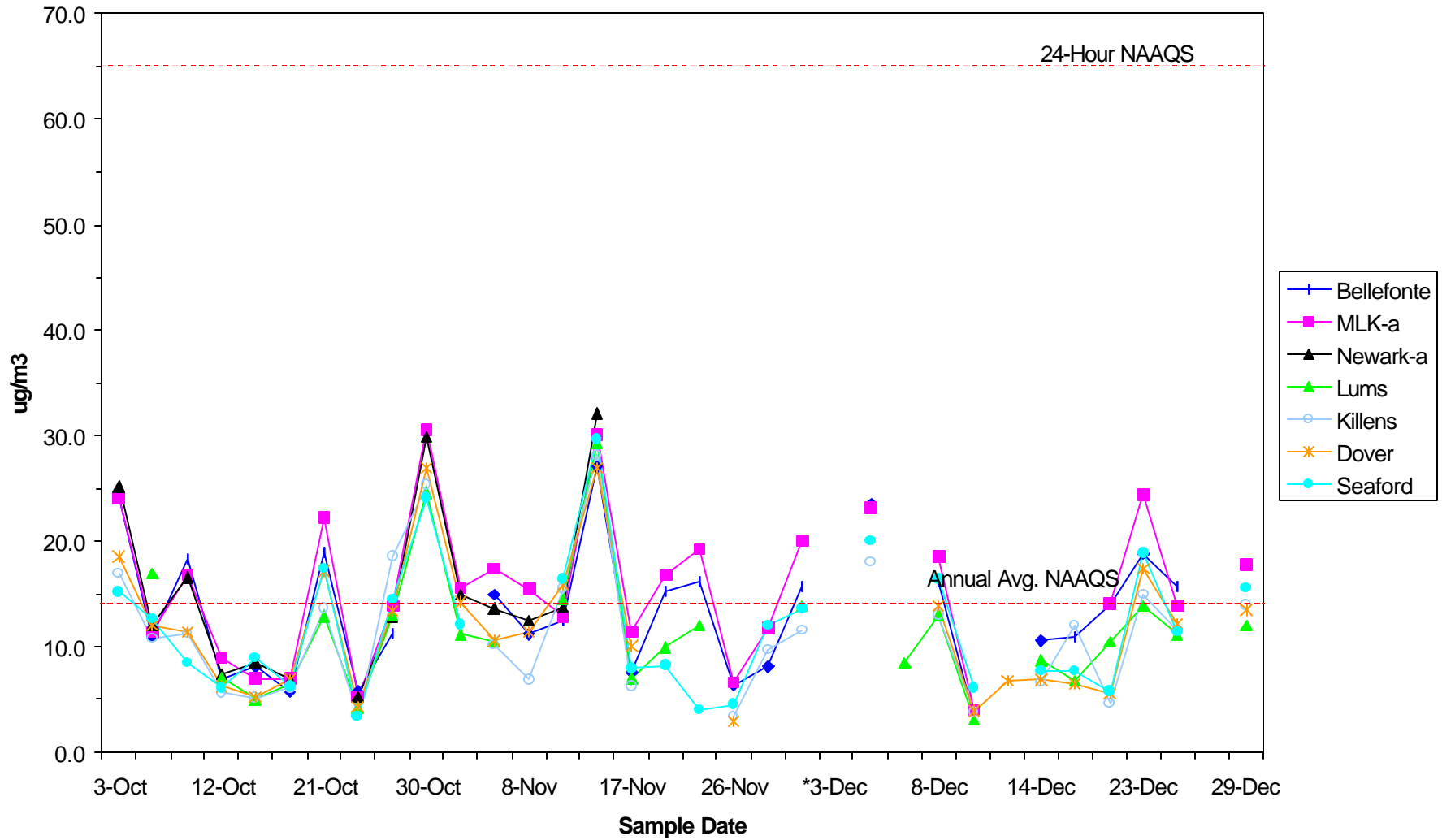
DE Field Blanks 2Q 1999



DE Field Blanks 3Q 1999



Delaware 4Q 1999 PM_{2.5} Data



Date	MLK-a	MLK-b	Nwrk-a	Nwrk-b	Blifte	Lums
9-Dec	33.6					
10-Dec	24.1					
11-Dec	4.0	4.4			3.5	3.1
12-Dec	11.3					
13-Dec	39.2					
14-Dec	0.1	10.5			10.6	8.7
15-Dec	12.0					
16-Dec	14.0		13.8			
17-Dec	31.6	e	10.2	9.6	10.9	6.8
18-Dec	0.0		16.0			
19-Dec	14.4		12.4			
20-Dec	14.2	e	8.6	7.8	14.0	10.5