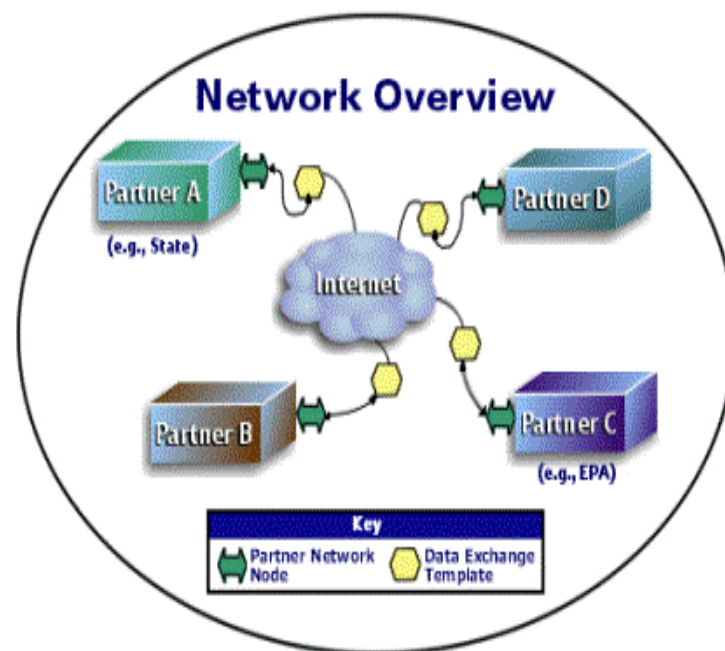


The National Environmental Information Exchange Network

Overview and Opportunities

National AQS User Conference
August 20, 2008

What is the Exchange Network?



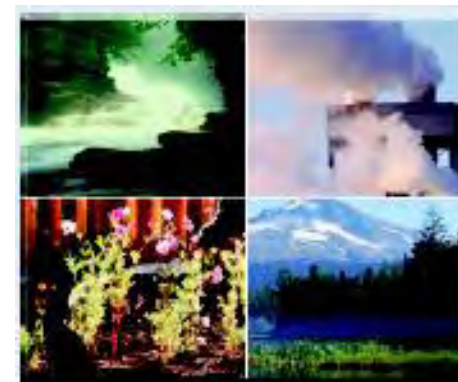
Principles:

1. Each partner manages their own data, and is the steward for data they originate.
2. The Network "doesn't care" how a partner manages and stores information.
3. Partners who need to store copies of data locally are responsible for the design, format, and maintenance of the copy they create.
4. Network partners agree to use adopted technology and data standards.

A common approach to sharing data that lets you use your partners' data as if it is a part of your own systems.

Why?

- High demand for access to environmental information among partners
- Multiple approaches to information exchanges are inefficient and burdensome
- States modernizing information systems and migrating away from use of EPA national systems
- Use of integrated information technologies and approaches is on the rise
- Yesterday's Answer for Today's question



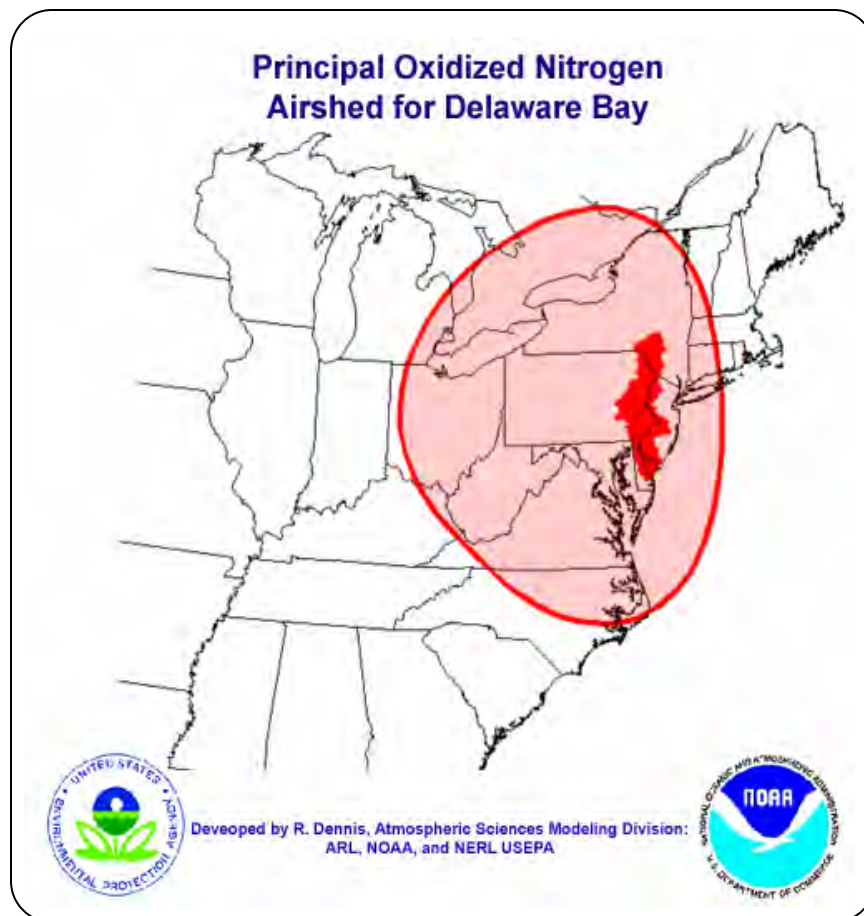
So Why Are We Still Talking?

- The Exchange Network looks like an IT Initiative
 - AQS worked just fine before you came along, thanks!
 - Besides, I'm busy. What's in it for me?
- Checking the box doesn't matter much. And it doesn't seem to do much.
- You're right. Your IT shop just doesn't get it
- Full Disclosure: I'm one of them
- But they mean well—and they have money!!
- It really does pay off for IT
- Air program innovators have made it work for them
- You only see the payoff when you do cool new stuff.



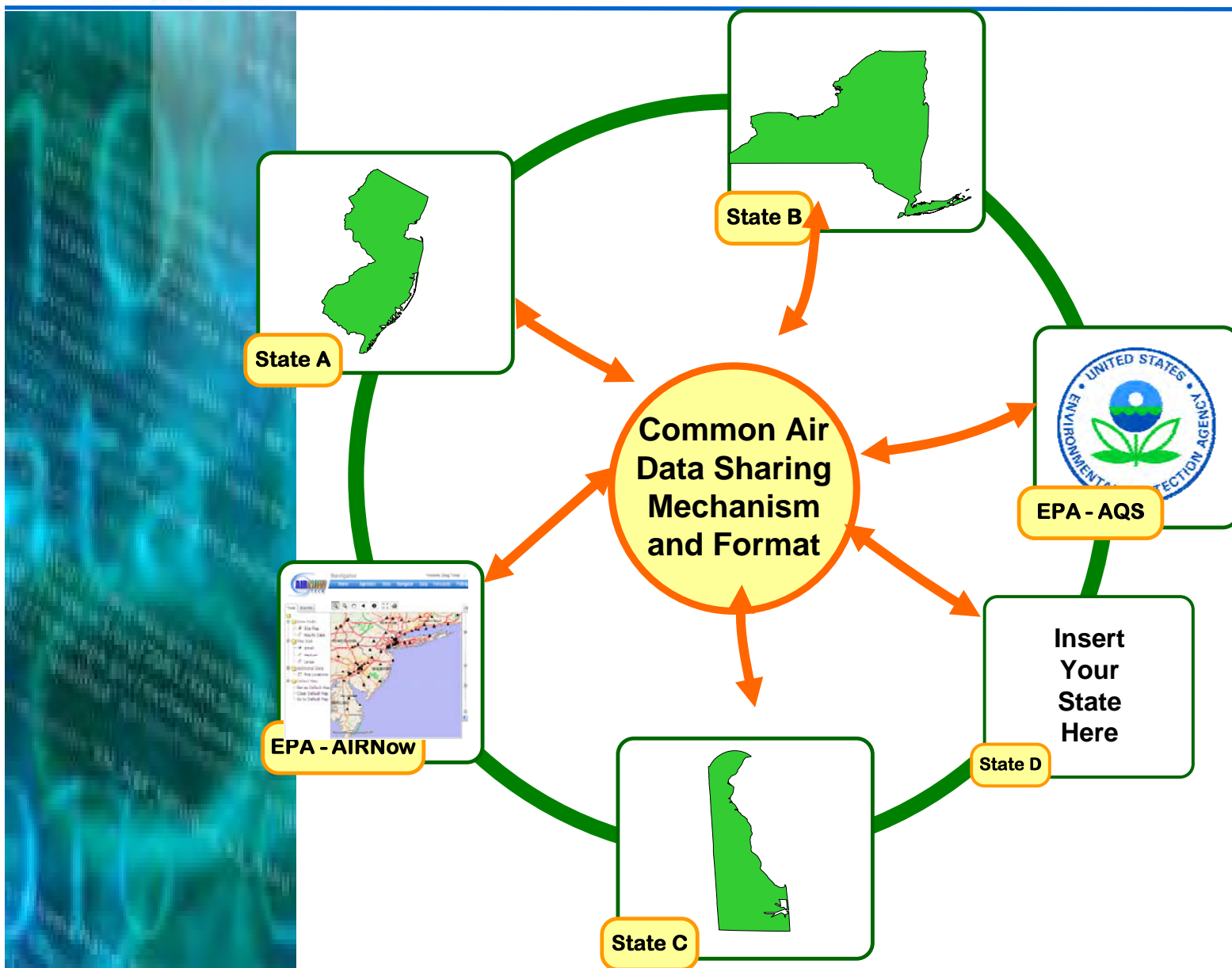
I'm not saying
don't use the
Network—just
understand
why, and make
work for you.

Business Case: New Jersey



- States share airsheds
- Air quality data isn't easily shared among states and is limited in EPA systems
- Information is needed consistently and timely for:
 - Environmental & Health assessments
 - Homeland security

Share data for multiple purposes—not just reporting



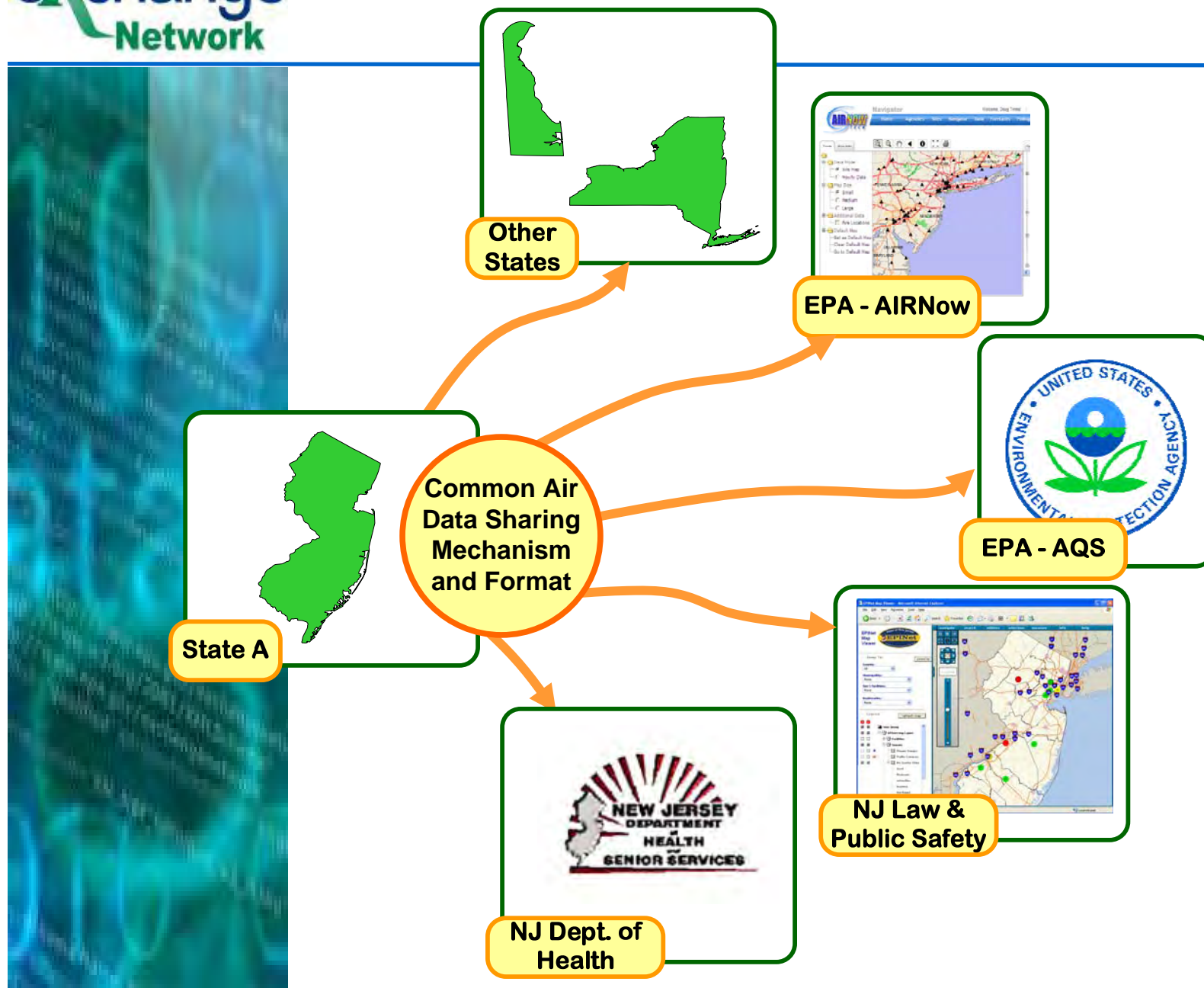
GIS Analysis Tool – AirNow Tech

The screenshot displays the AirNow Tech Navigator web application. At the top, the 'Navigator' title is followed by a user greeting 'Welcome, Doug Timms!' and links for 'My Account' and 'Sign Out'. A blue navigation bar contains links: Home, Agencies, Sites, Navigator, Data, Forecasts, Polling, Notifier, and Resources. The main interface features a central map of the Northeast United States, including New York, New Jersey, Pennsylvania, Connecticut, Delaware, and Maryland. The map is overlaid with numerous black triangle markers representing monitoring sites and red lines representing major roads. To the left of the map is a 'Tools' panel with expandable sections: 'Data Mode' (with 'Site Map' selected), 'Hourly Data', 'Map Size' (with 'Small' selected), 'Additional Data' (with 'Fire Locations' checked), and 'Default Map' (with options to 'Set as Default Map', 'Clear Default Map', and 'Go to Default Map'). Above the map is a toolbar with icons for zooming, panning, and information. To the right is a 'Layers' panel with expandable categories: 'Urban Areas' (with 'MSAs' and 'Population Density'), 'Transportation' (with 'Interstate', 'Major Roads', 'Airports', and 'Railroads' checked), 'Natural' (with 'Waterways' and 'Parks' checked), 'Locations' (with 'Landmarks', 'Schools', and 'Hospitals' checked), and 'Other Layers'. An 'Apply Changes' button is located at the bottom right of the layers panel. A scale bar at the bottom left of the map indicates a distance of 57 miles.



- Improved sharing, use, and consistency of air quality data among states and EPA Air Programs
- Provided tool for states to publish air quality data in a near real-time fashion
- Enabled air quality data to be available on-demand and analyzed online, geospatially through Air Now Tech
- Minimized effort by harmonizing 3 different data sharing needs (AQS, AirNow, State to State) into one data flow
- Collaborated and re-used existing technology
- Ensured easy reuse by other States and Tribes

1 effort reused 5 times in New Jersey

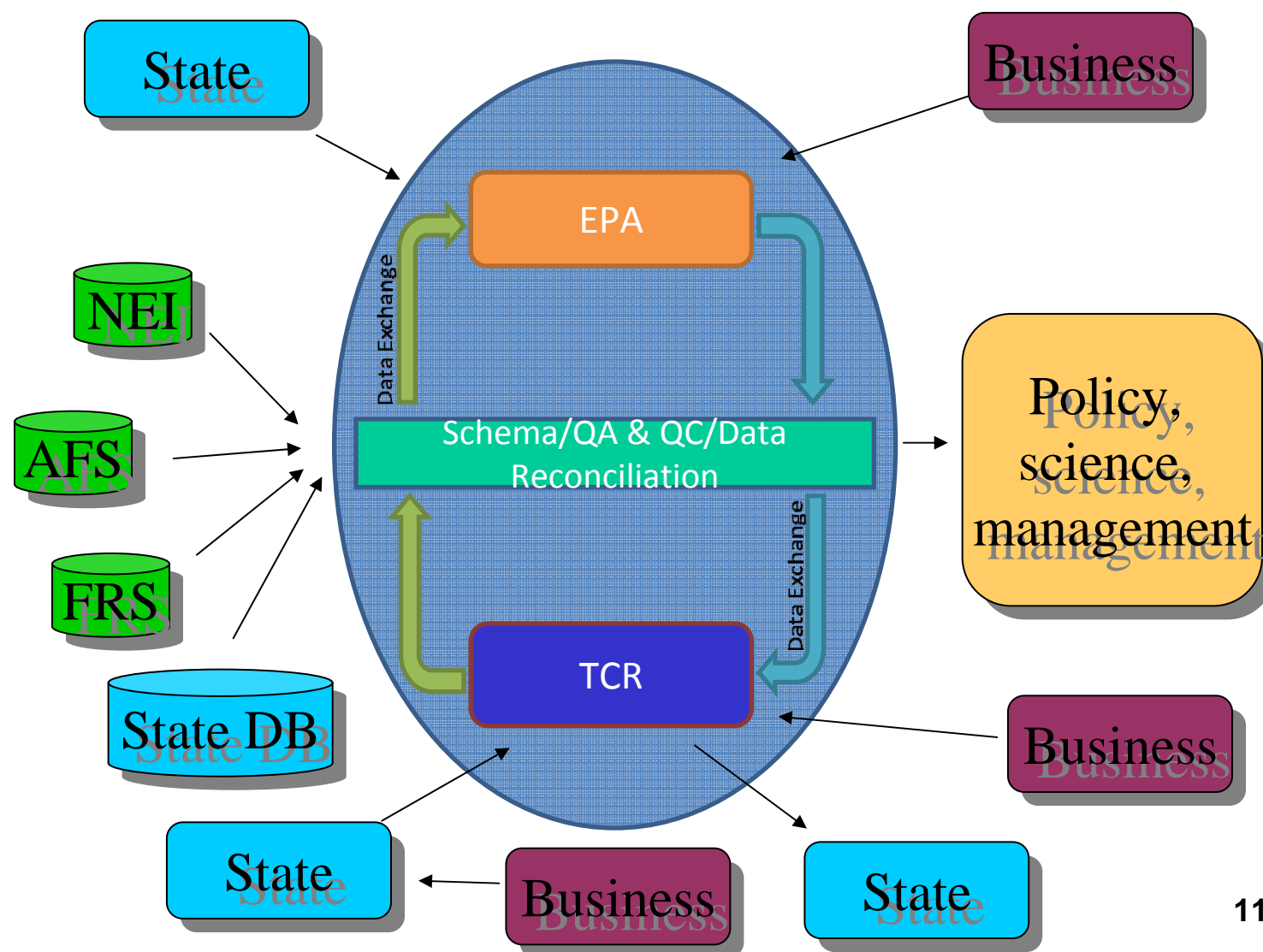


Other efforts

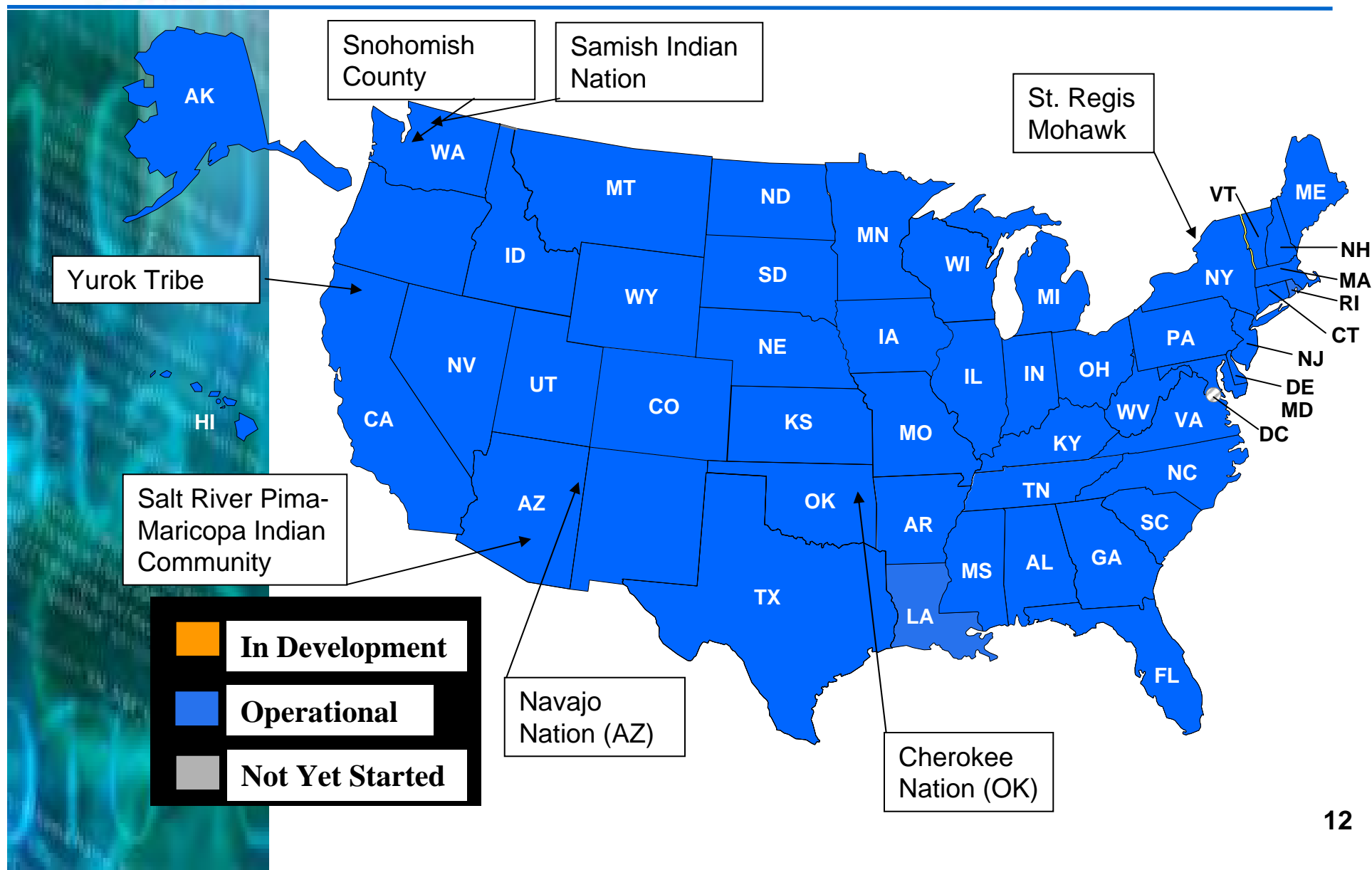
- Public Health Projects (6 states)
- Data Extraction (Water, at present)
 - Are AQS reports everything you can imagine?
- HERE Project (Emergency Response data sharing in a region), built on FRS exchange
- TCR, EIS, and GHG exchanges



Potential Data Exchanges



Status of Network - Today



Not Just Another Web Site!



- Can be “built in” to tools you use
- Send reports—or look it up.
- Build once, use many times
- Diminishing cost for new initiatives
- As protected as the owner chooses
- Shared Quality Assurance tools—before you try to load
- Data Standards—shared understanding
- Discovery Services

Finding Data



- Discovery services let you:
 - Find out what is on the Network
 - Learn which partners have the data you need
 - Find out how to access each node and how to request the needed data.
 - For sensitive data, learn how to obtain permissions for data you have a need to access
 - If someone has made tools that improve usability of the data, find and use those tools

Where am I going with all this?



- Define services
- Implement them on AQS—and between partners (want to call a sensor directly?)
- Tell your IT shop what you need to get done.
- The Exchange Network is built on innovation. You can create the “next big thing”
- We want you to ask “What’s in it for me”
- Get together with IT, and let the network buy you that next “killer app”.

Questions? Need Info

www.exchangenetwork.net

Mitch.West@exchangenetwork.net