

9.12.1 Malt Beverages

9.12.1.1 Process Description¹⁻⁴

The production of malt beverages, or beer, comprises four main stages: brewhouse operations, fermentation, aging or secondary fermentation, and packaging. Figures 9.12.1-1, 9.12.1-2, 9.12.1-3, and 9.12.1-4 show the various stages of a typical brewing process, including potential emission points.

Breweries typically purchase malted grain (malt) from malting operations. In the malting process, grain is first soaked in water-filled steeping tanks for softening. After softening, the grain is transferred to germination tanks, in which the grain germinates, typically over a 1-week period. From the germination tanks, the grain enters a kiln, which halts germination by drying the grain. To begin the brewing process, malt (usually barley malt) is transported by truck or rail to a brewery and is conveyed to storage silos. The malt is then ground into malt flour by malt mills and transferred to milled malt hoppers. Many small breweries purchase malt flour (malted and milled grain) from facilities with malt mills. Malt provides the starch-splitting and protein-splitting enzymes that are necessary to convert grain starches into fermentable sugars.

From the milled malt hoppers, the malt, along with hot water, is fed to the mash tun and heated to convert grain starches to fermentable sugars. Some large facilities use high-temperature mashing, which reduces the time required to convert the starches to sugars, but lowers the quantity of fermentable sugars produced. Most breweries use one of the three principal mashing processes; these are: double mashing, decoction, and infusion. Double mashing uses grains other than barley (typically corn and rice) as starch adjuncts. Before being added to the mash tun, the adjunct grains are broken down through cooking in a cereal cooker for about 1 hour at temperatures ranging from 40° to 100°C (104° to 212°F). Some plants do not use cereal cookers, but use additives such as corn syrup that function as adjunct grains. The malt and adjuncts are then mixed and heated in the mash tun. Decoction is a method of boiling portions of the mixture (mash) and adding the boiling portions to the mash tun to raise the overall temperature to about 75°C (167°F). The infusion process mixes the malt with hot water to maintain a uniform temperature (65° to 75°C [149° to 167°F]) until starch conversion is complete. Mixing, heating times, and temperatures vary among breweries. The finished product of mashing is a grain slurry, called mash.

From the mash tun, the mash is pumped to a straining tank called a lauter tun, which separates insoluble grain residues from the mash. The mash enters the lauter tun through a false bottom where the insoluble grain residues are allowed to settle. The grain sediment acts as a filter for the mash as it enters the tank. Various other filter agents, such as polypropylene fibers, are also used. Some large breweries use strainmasters, which are a variation of lauter tuns. The spent grain (brewers grain) from the lauter tun or strainmaster is conveyed to holding tanks, dried (by some breweries), and sold as animal feed. Brewers grain dryers are typically fired with natural gas or fuel oil. The product of the lauter tun is called wort.

The strained wort from the lauter tun is transferred to the brew kettle and is boiled, typically for about 90 to 120 minutes. Boiling stops the starch-to-sugar conversion, sterilizes the wort, precipitates hydrolyzed proteins, concentrates the wort by evaporating excess water, and facilitates chemical changes that affect beer flavor. Hops are added to the wort during the boiling process. Hops are high in iso- α acids, which impart the characteristic bitter flavor to beer. Some breweries add only hop extracts (that contain the desired iso- α acids), and some breweries add hop extracts during or after

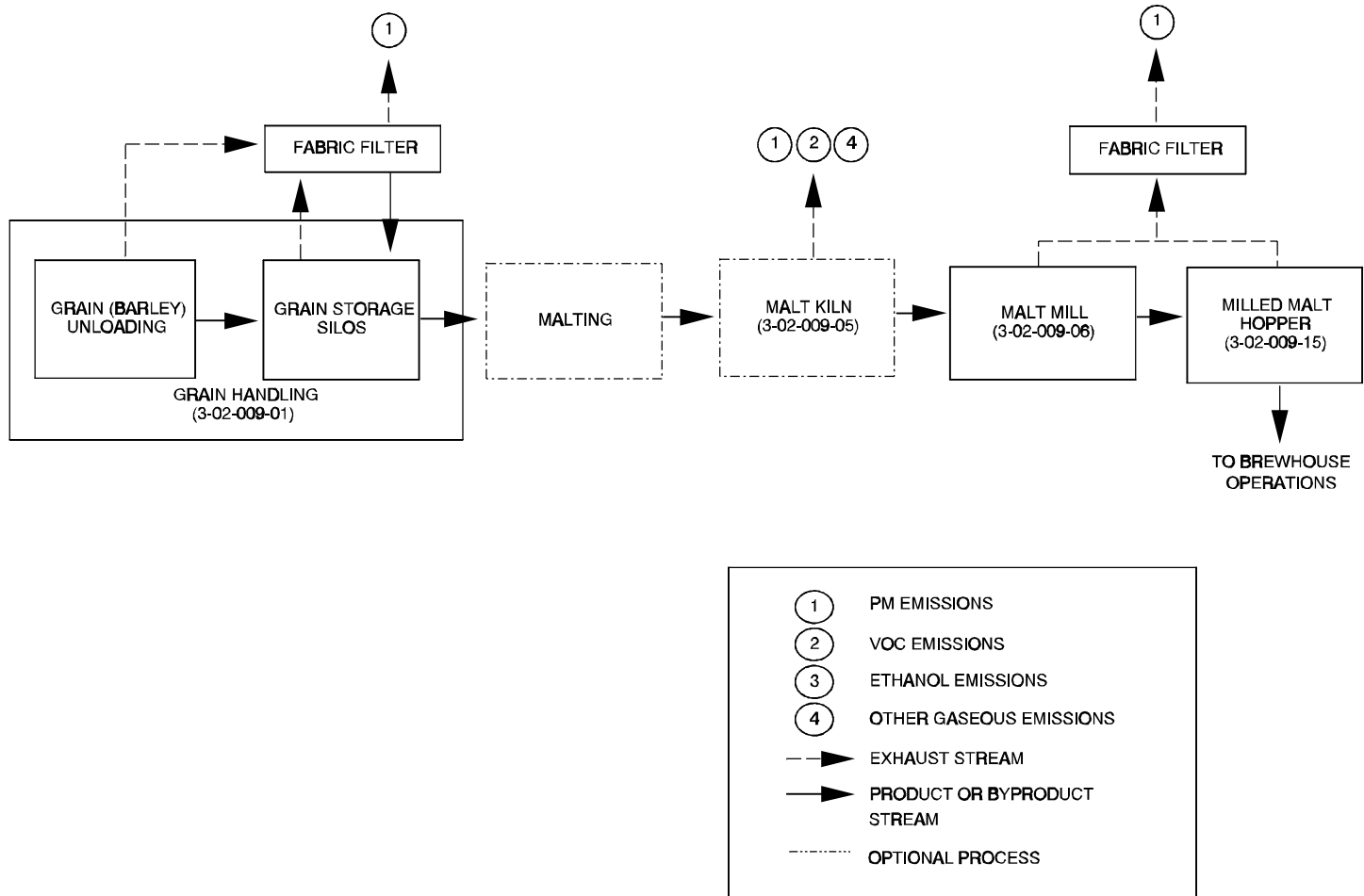


Figure 9.12.1-1. Typical brewery grain handling and malting operations.
(Source Classification Codes in parentheses.)

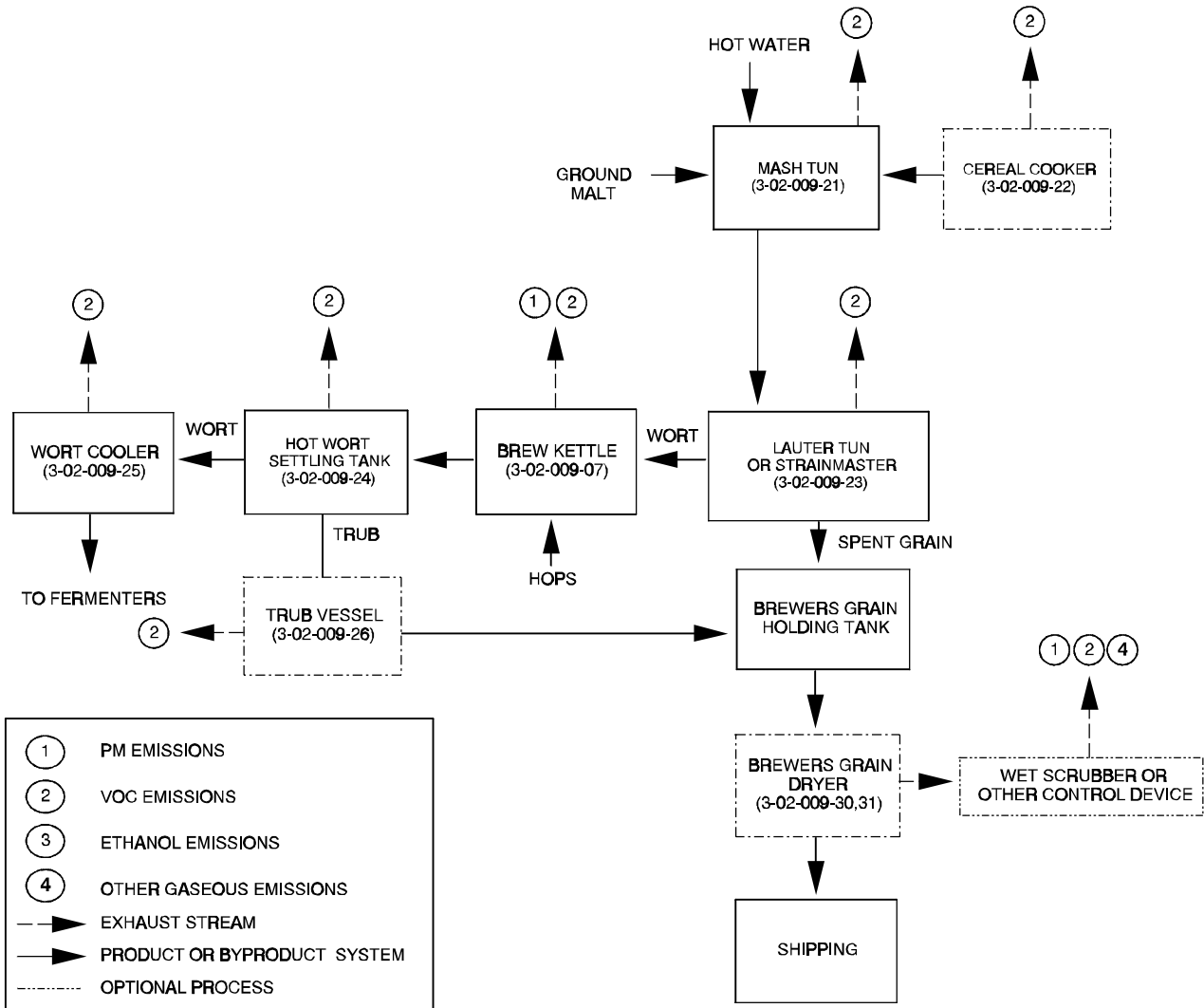


Figure 9.12.1-2. Typical brewery operations.
(Source Classification Codes in parentheses.)

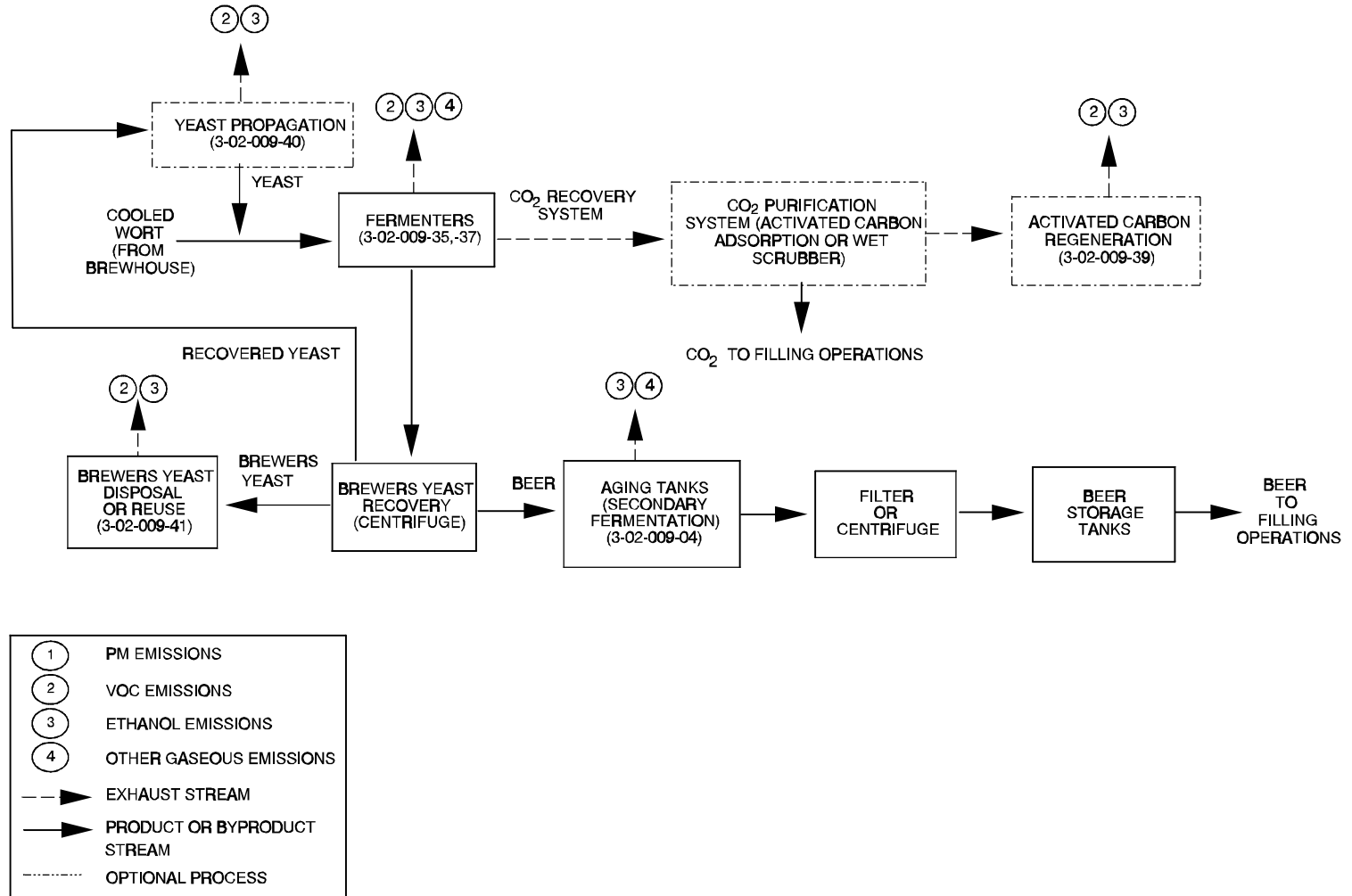


Figure 9.12.1-3. Typical fermentation and post-fermentation brewery operations.
(Source Classification Codes in parentheses.)

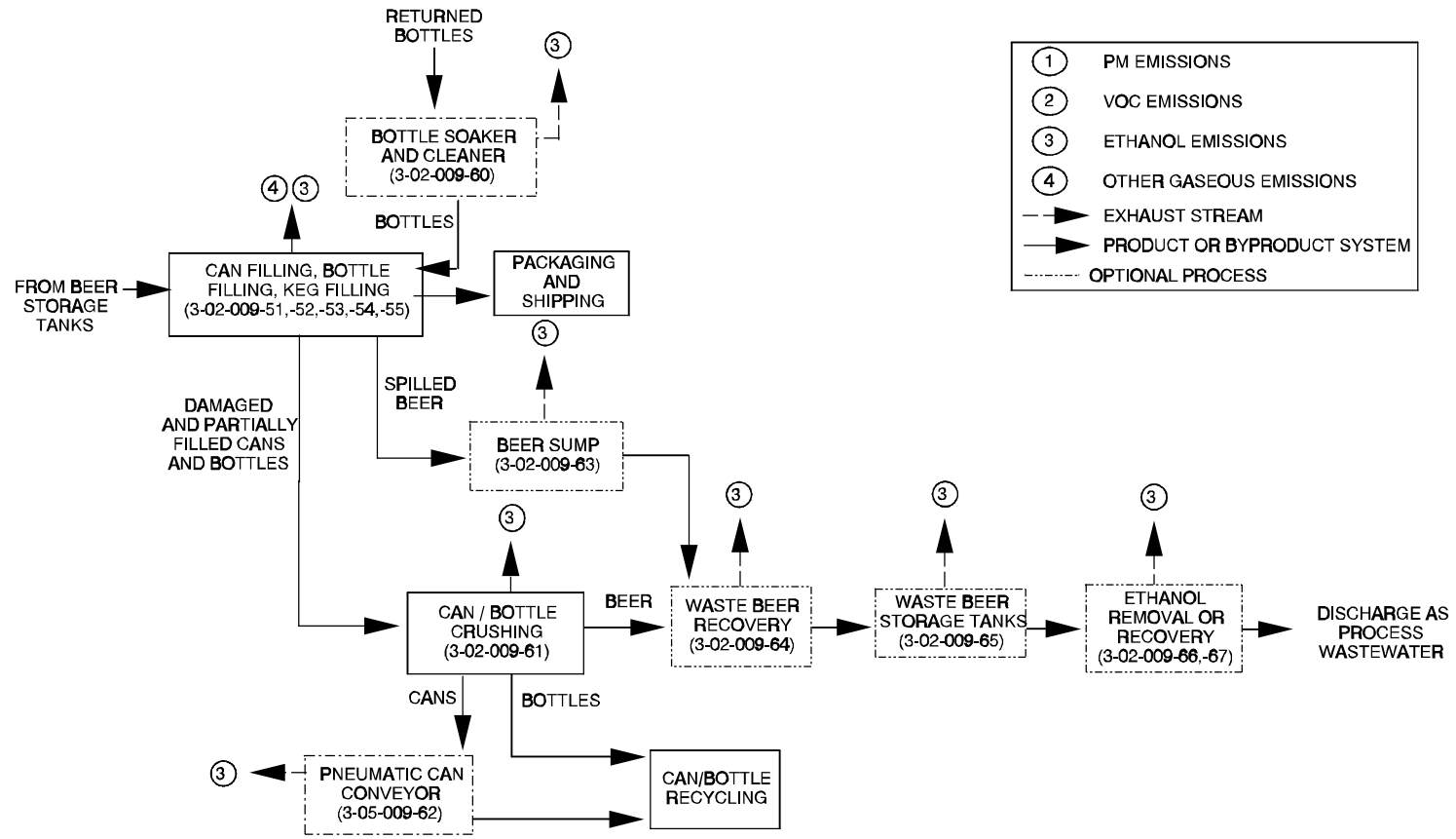


Figure 9.12.1-4. Typical filling room operations. (Source Classification Codes in parentheses.)

the fermentation process. After brewing, the hops are strained from the hot wort, and the hot wort is pumped to a large settling tank, where it is held to allow the remaining insoluble material (trub) to settle. The trub is transferred to the spent grain holding tanks. After settling, the hot wort is pumped to a cooling system (typically a closed system), which cools the liquid to temperatures ranging from about 7° to 12°C (44° to 54°F). Following cooling, yeast is added to the cooled wort as it is pumped to the fermenters.

Fermentation takes place in large tanks (fermenters--typically with capacities $\geq 1,000$ barrels for medium to large breweries) that can be either open or closed to the atmosphere. Most closed-tank fermenters include CO₂ collection systems, which recover CO₂ for internal use and remove organic impurities from the CO₂; water scrubbers and activated carbon adsorption systems are used to recover impurities. These closed tank fermenters typically vent emissions to the atmosphere (for a specified period of time) until the CO₂ is pure enough to collect. The scrubber water is commonly discharged as process wastewater, and the activated carbon is typically recharged (regenerated) on-site (the impurities are typically vented to the atmosphere).

Fermentation is a biological process in which yeast converts sugars into ethyl alcohol (ethanol), carbon dioxide (CO₂), and water. Yeasts can ferment at either the bottom or the top of the fermenter. *Saccharomyces carlsbergensis* are common bottom-fermenting yeasts used to produce lager beers. Bottom-fermenting yeasts initially rise to the top of the fermenter, but then flocculate to the bottom during rapid fermentation. When fermentation moderates, the beer is run off the top of the fermenter, leaving the bottom-fermenting yeasts at the bottom of the tank. *Saccharomyces cerevisiae* are top-fermenting yeasts commonly used to produce ales, porters, and stout beers. Top-fermenting yeasts rise to the top of the fermenter during rapid fermentation and are skimmed or centrifuged off the top when fermentation moderates. The type of yeast used and the length of the fermentation process vary among breweries and types of beer. Most pilsner beers ferment at temperatures varying from 6° to 20°C (43° to 68°F).

After primary fermentation, waste yeast is typically removed from the liquid (by centrifuges or other means), and the liquid proceeds to a secondary fermentation or aging process. The liquid is pumped to aging tanks, a small quantity of freshly fermenting wort is added (at some breweries), and the mixture is stored at low temperatures (below about 5°C [41°F]).

Several methods are used for the disposal of yeast, including: recovery of viable yeast for reuse in the fermentation process, sale to animal feed processors, distillation to recover residual ethanol, and disposal as process wastewater.

After the beer is aged, solids are typically removed by centrifugation or filtration with diatomaceous earth filters, and the beer is pumped to final storage (beer storage tanks). From final storage, the beer is pumped to the packaging (canning and bottling) facility.

Packaging facilities typically include several canning and bottling lines, as well as a keg filling operation. Most facilities pasteurize beer after canning or bottling, although some facilities package nonpasteurized products using sterile filling lines. Beer that spills during packaging is typically collected by a drainage system, and can be processed to remove or recover ethanol before discharge as process wastewater. Damaged and partially filled cans and bottles are typically collected, crushed, and recycled. Beer from the damaged cans and bottles can be processed to remove or recover ethanol before discharge as industrial sewage. The final steps in the process are labeling, packaging for distribution, and shipping.

Microbreweries typically produce beer for on-site consumption, although some have limited local keg distribution. The beer production process is similar to that of large breweries, although several processes may be excluded or combined. Most microbreweries purchase bags of either malted barley or malt flour for use in beer making. Malt flour requires no processing and is added directly to the mash tun. The facilities that use malted barley typically have a small "cracker" that cracks the grain prior to mashing. Brewhouse operations (mashing, brewers grain settling, brewing, and trub settling) may be combined to decrease the number of tanks required. Fermentation tanks and storage tanks are much smaller than large brewery tanks, with capacities as small as a few barrels. Many microbrews are held in fermentation tanks for three to four weeks (far longer than most mass-produced beers). Canning and bottling operations typically are not found in microbreweries.

9.12.1.2 Emissions And Controls¹⁻⁴

Ethanol is the primary volatile organic compound (VOC) emitted from the production of malt beverages. Aldehydes, ethyl acetate, other VOCs, CO₂, and particulate matter (PM) are also generated and potentially emitted.

Potential VOC emission sources include mash tuns, cereal cookers, lauter tuns or strainmasters, brew kettles, hot wort settling tanks, yeast storage and propagation (see AP-42 Section 9.13.4), fermenters, spent grain holding tanks, activated charcoal regeneration systems (at breweries with CO₂ recovery), aging tanks (sometimes referred to as "ruh" storage tanks), other storage tanks, and packaging operations. The operations that precede fermentation are sources of various species of VOC. Post-fermentation operations emit primarily ethanol; however, small quantities of ethyl acetate and various aldehydes may also be emitted from fermenters and post-fermentation operations. Other VOC that are emitted from cooking processes (mash tuns, hot wort tanks, and brew kettles) may include dimethyl sulfide, C₅-aldehydes, and myrcene (a hop oil emitted from brew kettles).

Fermenters are a source of ethanol, other VOC, and CO₂; large breweries typically recover CO₂ for internal use. However, smaller breweries and microbreweries typically vent CO₂ to the atmosphere.

Potential sources of PM emissions from breweries include grain malting, grain handling and processing operations (see AP-42 Section 9.9.1), brewhouse operations, and spent-grain drying.

Emissions from microbreweries consist of the same pollutants as large brewery emissions. No test data are available to quantify these emissions, but they are expected to be negligible based on the amount of beer produced in these facilities. Emission control devices are not typically used by microbreweries.

Process loss controls are used to reduce emissions from malt beverage production. Add-on emission controls are used to recover CO₂ in the fermentation process and to control PM emissions from grain handling and brewers grain drying. Large breweries typically use CO₂ recovery systems, which can include water scrubbers or activated carbon beds to remove impurities from the CO₂. The scrubber water is typically discharged as process wastewater, and organic impurities collected by the activated carbon beds are typically released to the atmosphere.

Water scrubbers could potentially be used to control ethanol emissions. However, scrubber efficiency is based, in part, on the pollutant concentration (200 to 300 parts per million by volume [ppmv] is needed for minimal efficiency), and the ethanol concentrations in fermentation rooms are typically very low (about 100 ppmv). Incineration is also an inefficient control measure if pollutant

concentrations are low. Recovery of ethanol vapor by carbon adsorption or other methods is another control alternative, although the cost of recovery may be high.

Grain handling and processing operations (unloading, conveying, milling, and storage) are typically controlled by fabric filters. Many smaller breweries purchase malt flour, and do not have milling operations.

Each brewery is unique, and source to source variations can significantly affect emissions. These variations result from differences in the brewing process, the type and age of equipment used, and total production. Brewery emissions are also affected by the unique recipes and time and temperature differences during various stages of production.

Emission factors for malt beverage production operations are shown in Tables 9.12.1-1 and 9.12.1-2.

Table 9.12.1-1. EMISSION FACTORS FOR MALT BEVERAGES^a

Source/control	Filterable PM					
	PM	EMISSION FACTOR RATING	PM-10	EMISSION FACTOR RATING	PM-2.5	EMISSION FACTOR RATING
Brew kettle ^b (SCC 3-02-009-07)	0.41	E	ND		ND	
Brewers grain dryer (SCC 3-02-009-30,-32)	26 ^c	D	0.33 ^d	D	0.091 ^d	D
Brewers grain dryer with wet scrubber (SCC 3-02-009-30,-32)	0.42 ^c	D	0.11 ^d	D	0.060 ^d	D

^a Emission factor units are lb of pollutant per 1,000 bbl of beer packaged unless noted. 1 bbl = 31 U.S. gallons. ND = no data available. SCC = Source Classification Code.

^b Reference 9.

^c References 11,13,17. Emission factor units are lb of pollutant per ton of dried grain produced.

^d Reference 11. Emission factor units are lb of pollutant per ton of dried grain produced.

Table 9.12.1-2. EMISSION FACTORS FOR MALT BEVERAGES^a

EMISSION FACTOR RATING: E

Process	CO	CO ₂	VOC ^b	Hydrogen Sulfide
Activated carbon regeneration ^c (SCC 3-02-009-39)	ND	ND	0.035	ND
Aging tank--filling ^d (SCC 3-02-009-08)	ND	26	0.57	ND
Bottle crusher ^e (SCC 3-02-009-61)	ND	ND	0.48	ND
Bottle crusher with water sprays ^e (SCC 3-02-009-61)	ND	ND	0.13	ND
Bottle filling line ^f (SCC 3-02-009-53)	ND	ND	17	ND
Bottle soaker and cleaner ^g (SCC 3-02-009-60)	ND	ND	0.20	ND
Brew kettle ^h (SCC 3-02-009-07)	ND	ND	0.64	ND
Brewers grain dryer--natural gas-fired (SCC 3-02-009-30)	ND	840 ^j	0.73 ^k	ND
Brewers grain dryer--steam-heated (SCC 3-02-009-32)	0.22 ^m	53 ^m	0.73 ^k	ND
Can crusher with pneumatic conveyor ⁿ (SCC 3-02-009-62)	ND	ND	0.088	ND
Can filling line ^f (SCC 3-02-009-51)	ND	ND	14	ND
Cereal cooker ^p (SCC 3-02-009-22)	ND	ND	0.0075	ND
Fermenter venting: closed fermenter ^q (SCC 3-02-009-35)	ND	2,100	2.0	0.015
Hot wort settling tank ^r (SCC 3-02-009-24)	ND	ND	0.075	ND
Keg filling line ^s (SCC 3-02-009-55)	ND	46	0.69	ND
Lauter tun ^p (SCC 3-02-009-23)	ND	ND	0.0055	ND
Mash tun ^p (SCC 3-02-009-21)	ND	ND	0.054	ND
Open wort cooler ^r (SCC 3-02-009-25)	ND	ND	0.022	ND
Sterilized bottle filling line (SCC 3-02-009-54)	ND	4,300 ^t	40 ^u	ND
Sterilized can filling line (SCC 3-02-009-52)	ND	1,900 ^t	35 ^u	ND

Table 9.12.1-2 (cont.).

Process	CO	CO ₂	VOC ^b	Hydrogen Sulfide
Trub vessel--filling ^f (SCC 3-02-009-26)	ND	ND	0.25	ND
Waste beer storage tanks (SCC 3-02-009-65)	ND	ND	ND	ND

- ^a Emission factor units are lb of pollutant per 1,000 bbl of beer packaged unless noted. 1 bbl = 31 U.S. gallons. ND = no data available. SCC = Source Classification Code.
- ^b Total organic compounds measured using EPA Method 25A, unless noted otherwise. Pre-fermentation factors are presented as VOC as propane; post-fermentation factors are presented as VOC as ethanol because the emissions have been shown to be primarily ethanol.
- ^c Reference 19. From CO₂ recovery and purification system on a closed fermenter.
- ^d Reference 6. VOC as ethanol. EMISSION FACTOR RATING: D.
- ^e Reference 15. VOC as ethanol. Emission factor units are lb of pollutant per batch of bottles crushed. Crusher averages about 34 crushes per day.
- ^f Reference 20. Emission factor represents ethanol emissions measured using both EPA Method 18 and an FTIR analyzer. Factor is reported as VOC because ethanol is essentially the only VOC emitted from filling operations.
- ^g Reference 14. Emission factor units are lb of pollutant per 1000 cases of bottles washed. Emission factor represents ethanol emissions measured by GC/FID. Factor is reported as VOC because ethanol is essentially the only VOC emitted from this operation. EMISSION FACTOR RATING: D.
- ^h References 9,19. VOC as propane.
- ^j Reference 17. Emission factor units are lb of pollutant per ton of dried grain produced. Emission factor includes data from dryers controlled by wet scrubbers, which do not control CO₂ emissions. EMISSION FACTOR RATING: D.
- ^k References 11-13. VOC as propane. Emission factor units are lb of pollutant per ton of dried grain produced. Emission factor includes data from dryers controlled by wet scrubbers, which do not control VOC emissions. EMISSION FACTOR RATING: D.
- ^m Reference 11. Emission factor units are lb of pollutant per ton of dried grain produced. Emission factor includes data from dryers controlled by wet scrubbers, which do not control CO or CO₂ emissions. EMISSION FACTOR RATING: D.
- ⁿ Reference 16. VOC as ethanol. Emission factor units are lb of pollutant per gallon of beer recovered. EMISSION FACTOR RATING: D.
- ^p Reference 19. VOC as propane.
- ^q Reference 10. VOC as ethanol. Emission factors are based on a 24-hour venting period prior to CO₂ collection.
- ^r Reference 5. VOC as propane.
- ^s Reference 5. VOC as ethanol. EMISSION FACTOR RATING: D.
- ^t Reference 5. EMISSION FACTOR RATING: D.
- ^u References 5,7-8,18. VOC as ethanol. Emission factor includes measurements of VOC as ethanol measured using EPA Method 25A and ethanol measured using both EPA Method 18 and an FTIR analyzer. EMISSION FACTOR RATING: D.

References For Section 9.12.1

1. Written communication from Brian Shrager, Midwest Research Institute, Cary, NC, to Dallas Safriet, U. S. Environmental Protection Agency, Research Triangle Park, NC, May 5, 1994.
2. Richard D. Rapoport *et al.*, *Characterization Of Fermentation Emissions From California Breweries*, Science Applications, Inc., Los Angeles, CA, October 26, 1983.
3. Written communication from Jere Zimmerman, Adolph Coors Company, Golden, CO, to David Reisdorph, Midwest Research Institute, Kansas City, MO, March 11, 1993.
4. Written communication from Arthur J. DeCelle, Beer Institute, Washington, D.C., to Dallas Safriet, U. S. Environmental Protection Agency, Research Triangle Park, NC, February 15, 1995.
5. *Report On Compliance Testing Performed For Coors Brewing Company*, Clean Air Engineering, Palatine, IL, November 25, 1992.
6. *Report On Diagnostic Testing Performed For Coors Brewing Company, Revision 1*, Clean Air Engineering, Palatine, IL, April 6, 1994.
7. *Can And Bottle Filler Vent Volatile Organic Compound Test For Coors Brewing Company*, Air Pollution Testing, Inc., Westminster, CO, October 1992.
8. *Filler Rooms Diagnostic VOC Test Report For Coors Brewing Company*, Air Pollution Testing, Inc., Westminster, CO, December 1992.
9. *Stack Emissions Survey, Adolph Coors Company Brewery Complex, Golden, Colorado*, Western Environmental Services and Testing, Inc., Casper, WY, November, 1990.
10. *Stack Emissions Survey, Adolph Coors Company Fermentation - Aging Facilities, Golden, Colorado*, Western Environmental Services and Testing, Inc., Casper, WY, November 1990.
11. *Stack Emissions Survey, Adolph Coors Company Brewery Complex, Golden, Colorado*, Western Environmental Services and Testing, Inc., Casper, WY, February 1991.
12. *Grain Dryer Diagnostic VOC Report For Coors Brewing Company*, Air Pollution Testing, Inc., Westminster, CO, November 1992.
13. *Report On Compliance Testing Performed For Coors Brewing Company*, Clean Air Engineering, Palatine, IL, November 25, 1992.
14. *Bottle Wash Soaker Area Ethanol Emissions Source Test Report Performed For Coors Brewing Company*, Acurex Environmental Corporation, Anaheim, CA, July 12, 1993.
15. *Volatile Organic Compound Emissions Source Test Report For Coors Brewing Company*, Air Pollution Testing, Inc., Lakewood, CO, August 1993.

16. *Crushed Can Conveyor Unit Compliance VOC Test Report For Coors Brewing Company*, Air Pollution Testing, Inc., Lakewood, CO, October 21, 1993.
17. *Emission Test Report, Dryers #1 And #4, Anheuser Busch, Inc., Columbus, Ohio*, Pollution Control Science, Miamisburg, OH, December 20, 1983.
18. *Source Emissions Testing Report For Coors Brewing Company: Golden, Colorado Facility, FID/FTIR Ethanol Measurements--Can And Bottle Line Ducts*, Air Pollution Testing, Inc., Lakewood, CO, April 3-4, 1995.
19. *Air Emissions Investigation Report, Miller Brewing Company, Fulton, New York*, RTP Environmental Associates, Inc., Westbury, NY, February 1994.
20. *Stationary Source Sampling Report Reference No. 21691, Anheuser-Busch Brewery, Fort Collins, Colorado, Filling Room Vents*, Entropy, Inc., Research Triangle Park, NC, July 26-28, 1994.
21. *Emission Factor Documentation For AP-42 Section 9.12.1, Malt Beverages*, Midwest Research Institute, Cary, NC, October 1996.