



STORET Version 2.0 Installation Guide

STORET

STORET Technical Support

1-800-424-9067
storet@epa.gov

United States Environmental Protection Agency
Office of Water

August 26, 2005

CONTENTS

1.0	INTRODUCTION	1
1.1	System Requirements	2
1.2	STORET version 2.0 Components	2
2.0	WINDOWS 98 SECOND EDITION (SE) STANDALONE INSTALLATION	3
2.1	Report Module	3
2.1.1	Installing STORET Report Module v2.0	3
2.2	Oracle 8i Personal Edition	5
2.2.1	Installing Oracle 8i Personal Edition	5
2.3	STORET Data Entry Module and STORET Database	7
2.3.1	Installing STORET Data Entry Module and STORET Database	8
3.0	WINDOWS NT V4.0/2000/XP STANDALONE INSTALLATIONS	11
3.1	Report Module	11
3.1.1	Installing STORET Report Module v2.0	12
3.2	Oracle 8i Personal Edition	14
3.2.1	Installing Oracle 8i Personal Edition	14
3.3	STORET Data Entry Module and STORET Database	15
3.3.1	Installing STORET Data Entry Module and STORET Database	16
4.0	CLIENT-SERVER INSTALLATION	19
4.1	Report Module	19
4.1.1	Installing STORET Report Module v2.0	20
4.2	STORET Data Entry Module and STORET Database	22
4.2.1	Installing the STORET Data Entry Module	22
4.2.2	Installing Server Database	25
5.0	MIGRATE STORET V1.1/1.2 DATA	25
5.1	Standalone Migration for Windows 98/NT/2000/XP	26
5.2	Server Data Migration	27
APPENDIX A	STORET Version 2.0 Installation for Oracle 9i	
APPENDIX B	Uninstalling STORET Applications	
APPENDIX C	Oracle Home Setup	
APPENDIX D	STORET Report Module Custom Installations	
APPENDIX E	Pentium 4 Information	
APPENDIX F	Manual Installation of STORET Database with Personal Oracle 8.1.7	

1.0 INTRODUCTION

This document provides the information necessary to install STORET version 2.0.

If you have a STORET version 1.1/1.2 database, it is recommended that you backup your database by using the System Administration\Export Data feature in the STORET Data Entry Module. Select all Organizations for export. A Database Administrator can also create a backup outside of the STORET application.

These instructions have been divided into the following sections:

- C Standalone Installation for Windows 98 Second Edition (SE).
Covers installation of the STORET Report Module, Oracle 8i Personal Edition, STORET Data Entry Module with STORET Database.
- C Standalone Installation for Windows NT v4.0/2000/XP.
Covers installation of the STORET Report Module, Oracle 8i Personal Edition, STORET Data Entry Module with STORET Database.
- C Client-Server Installation.
Covers installation of the STORET Data Entry Module.
- C Data Migration.
Covers conversion of an existing STORET v1.1/1.2, Oracle 7.3.4 database into a STORET v2.0, Oracle 8i Personal Edition database.

The sequence in which the STORET and Oracle components are installed is important to facilitate the easiest possible installation.

The sequence of events for Standalone Installation is as follows:

- C Report Module.
- C Oracle 8i Personal Edition.
- C STORET Data Entry Module with STORET Database.

If a local Oracle 8i database has already been loaded on the computer, AND, no database currently exists, uninstall the Oracle 8i Personal Edition using the Start\Programs\Oracle Installation Products\Oracle Universal Installer. If unable to uninstall because a database currently exists, see Appendix C for proper home setup before beginning installation.

The approximate minimum time to complete each phase of installation is as follows:

C	STORET Report Module (with Oracle Runtimes)	-	1-5 minutes.
C	Oracle 8i Personal Edition	-	30 minutes.
C	STORET Data Entry Module with STORET Database	-	2 hours.
C	Client-Server Installation (STORET Data Entry Module)	-	1-5 minutes.
C	Data Migration	-	2 hours-X days.

Note: Data migration time is highly variable depending upon the quantity and nature of existing data.

1.1 System Requirements

Minimum Hardware Requirements:

C	Pentium II 200 MHz or equivalent.
C	128 MB RAM.
C	CD-ROM drive.
C	STORET Data Entry Module software - 50 MB.
C	STORET Report Module software (with Oracle Runtimes) - 250 MB.
C	STORET Database - 1.5 GB.

Minimum Software Requirements:

C	Windows 98 SE, Windows NT v4.0, Windows 2000, Windows XP.
C	Connectivity to an Oracle 8i database version 8.1.7.0.0 or higher.
C	Internet Explorer Version 5.0 or higher.
C	Adobe Acrobat Reader. Adobe Acrobat Reader is provided on both STORET Disks under the Acrobat folder; double-click “AcroReader51_ENU_full.exe” to install.

1.2 STORET version 2.0 Components

STORET version 2.0 references the following components:

C	STORET Report Module v2.0 - Provides capability for running STORET reports.
S	Forms Runtime version: 6.0.8.8.0.
S	Reports Runtime version 6.0.8.8.3.
C	Oracle 8i Personal Edition - Oracle provided database management system.
C	STORET Data Entry Module v2.0 - Provides capability for entering and editing STORET data.
C	STORET Database - STORET data files.

All STORET products will be loaded under a STORET directory on the root of the given drive.

For example:

c:\STORET\STORV20	(STORET Data Entry Module)
c:\STORET\ORASTO2	(STORET Database)
c:\STORET\STRRPT	(STORET Report Module)

2.0 WINDOWS 98 SECOND EDITION (SE) STANDALONE INSTALLATION

2.1 Report Module

This section provides instructions for installing the STORET Report Module v2.0. Although not recommended, instructions for performing a custom installation have also been provided in Appendix D.

The STORET Report Module v2.0, the Oracle Forms runtime, Oracle Reports runtime, and other required Oracle components are provided in this installation. All aspects of the installation are managed by the Oracle Installer which comes on the CD provided. However, for those further interested in what actions the Installer will perform, the following possible scenarios that could be present on your workstation have been provided:

- C If the Oracle Forms and Reports runtime, and other required Oracle components are not present on your workstation, this installation will install them.
- C If the Oracle Forms and Reports runtime, and other required Oracle components are present on your workstation with an older version, this installation will upgrade all appropriate components. If you do not want to upgrade your Oracle products, then see Appendix D for performing a Custom Installation of the STORET Report Module v2.0. It should be noted, however, that failure to upgrade the Oracle products may cause the STORET Report Module v2.0 to work improperly.
- C If the Oracle Forms and Reports runtime, and other required Oracle components are present on your workstation with the same version, this installation will verify their presence and add any files that are missing.
- C If the Oracle Forms and Reports runtime, and Oracle Net8 components are present on your workstation with a newer version, this installation will provide a prompt asking you if you want to downgrade each component to the ones provided on this CD. You should press <No> to prevent a downgrade of each identified Oracle component, and continue with installing the other components included in your STORET Report Module installation package.

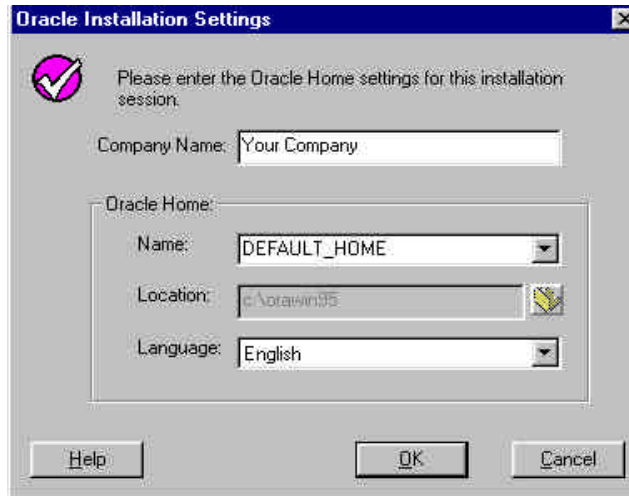
2.1.1 Installing STORET Report Module v2.0

Follow these instructions to install the STORET Report Module v2.0.

1. Close all applications that may be running.
2. Insert the STORET Report Module v2.0 Installation CD (Disk 1) into your computer. The CD **will not** start automatically. Review the instructions in the file named

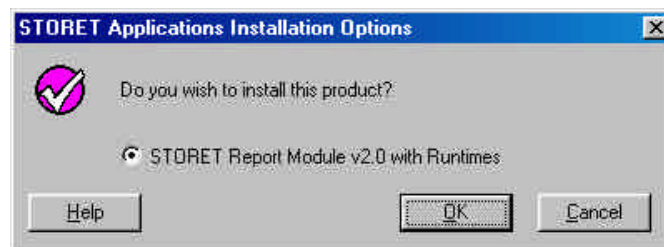
“_README_FIRST.doc” on the root of the CD, and print a copy of the Installation Guide found in the Documents folder. Then run setup.exe on the root of the CD.

3. Enter a company name and leave the default_home as the Oracle Home. The default_home may be the only choice and is usually an appropriate choice. Accept all other default values. Press <OK>.



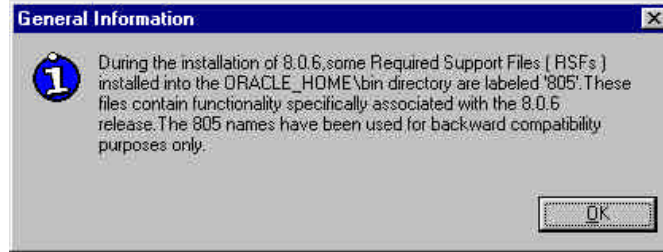
Note: The STORET Report Module v2.0 will be installed on the C: drive of the computer. If the C: drive is unavailable, or a different drive is desired, refer to the section titled “Changing Drive Location” in Appendix D of this document.

4. After successful entry in the Oracle Installation Settings window, you will be provided a confirmation dialog box. Press <OK> to load the STORET Report Module v2.0 with the Oracle Forms and Reports runtime components.



5. The installation will take from 1 to 5 minutes depending upon existing Oracle software and computer performance.

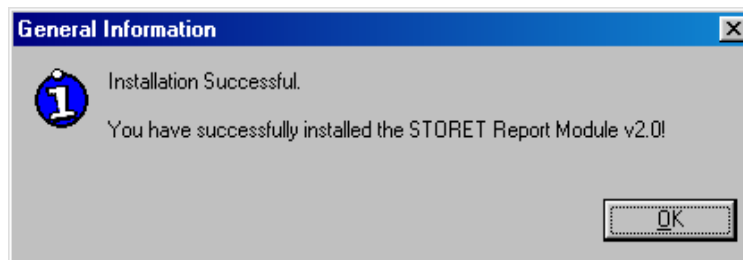
Note: If you receive the following General Information message, press <OK>.



Note: If you receive the following Microsoft upgrade message, press <OK>.



6. An Installation Successful message will appear when the installation is complete. Press <OK> and close any open windows. To run the STORET Report Module you must be able to access a STORET v2.0 database from your Server or Standalone STORET Database.



2.2 Oracle 8i Personal Edition

Oracle 8i Personal Edition is an Oracle product not provided in the STORET v2.0 package, and must be acquired separately.

2.2.1 Installing Oracle 8i Personal Edition

These are instructions for installing Oracle 8i Personal Edition for Windows 98.

NOTE: For further technical assistance with Oracle installation or operating system issues beyond the scope of this document, please refer to <http://www.oracle.com>.

1. Insert the Oracle 8i Personal Edition CD (for 98) into your computer. The CD should start automatically, if not, then run setup.exe on the root of the CD.
2. If the Oracle Introductory screen appears first, select the choice to Install/Deinstall Products. If not, then see the step below.

If you have a Pentium 4, and the Oracle Universal Installer will not start or you receive a jrew/java error message while attempting to install, refer to Appendix E under **Pentium 4 Assistance**.

3. On the Welcome screen, press the <Next> button to proceed to the File Locations screen.
(If you do not receive the Welcome screen proceed to Appendix E.)
4. On the File Locations screen, type ORAHOME81 into the Destination field as the name of the Oracle Home. Type C:\oracle\ora81 as the path. Press the <Next> button to proceed to the Available Products screen.
5. On the Available Products screen, choose the <Minimal> option. Press the <Next> button to proceed to the Upgrade or Migrate an Existing Database screen.
6. If the Upgrade or Migrate an Existing Database screen appears, **DO NOT** choose any options. Press the <Next> button to proceed to the Select Starter Database screen.
7. On the Select Starter Database screen, choose <No>. Press the <Next> button to proceed to the Summary screen.
8. On the Summary screen, you will see the summary of your selections. Press the <Install> button to start the installation.
9. On the Net8 Configuration screen, choose <Typical> option. Press the <Next> button to proceed. Note that the previously mentioned jrew/java error message associated with a Pentium 4 may appear at the end of the installation. If the instructions in Appendix E under Pentium 4 Assistance have been followed, this error message should be ignored.
10. Press the <Next Install> button to install Oracle Provider for Object Linking and Embedding for Databases (OLEDB) and Oracle Open Database Connectivity (ODBC) Driver. The next screen that appears will be the File Locations screen.
11. On the File Locations screen, select the same Oracle Home that was used to install the Oracle 8i Personal Edition software which is ORAHOME81. Press the <Next> button to proceed to the Available Products screen.

12. On the Available Products screen, select <Oracle 8i Custom Installation>. Press the <Next> button to proceed to the Available Product Components screen.
13. On the Available Product Components screen, uncheck all of the options, expand the Development Tools 8.1.7.x.x directory, and check the boxes for “Oracle Provider for OLEDB” and “Oracle ODBC Driver”. Press the <Next> button to proceed to the Summary screen.
14. On the Summary screen, press the <Install> button. This will start the OLEDB and ODBC Driver installation.
15. Exit the Oracle Universal Installer, and reboot the computer.

NOTE: If you renamed the symcjit.dll files as instructed for Pentium 4 Assistance in Appendix E, rename all symcjit.dl_ files back to the original name (i.e., symcjit.dll).

2.3 STORET Data Entry Module and STORET Database

This section provides the installation instructions for the STORET Data Entry Module v2.0. These instructions should be followed step-by-step for proper installation of the software.

The STORET Data Entry Module CD (Disk 2) can perform 3 installation functions:

- C Client-Server Installation - Installs the STORET Data Entry Module v2.0 only.
- C Standalone Installation - Installs the STORET Data Entry Module v2.0 and STORET Database.
- C Migrate STORET v1.1/1.2 data - Converts an existing STORET v1.1 or v1.2, Oracle 7.3.4 database into a STORET v2.0, Oracle 8i Personal Edition database.

The available installation functions will vary depending upon the current configuration of your computer. Below are the available options given typical configurations:

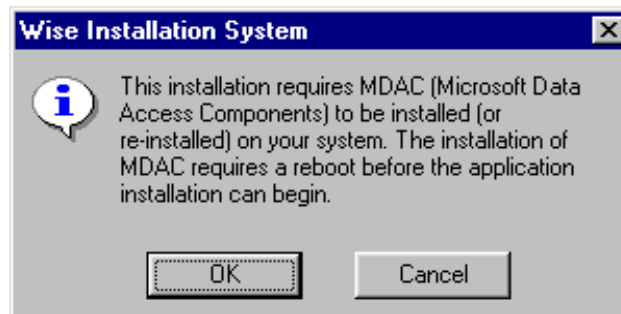
- C If Oracle 8i Personal Edition is not installed on your computer and not set as the primary Oracle Home, you will only be able to perform the Client-Server Installation.
- C If you have installed Oracle 8i Personal Edition and this is set as your primary Oracle Home, you will be able to perform the Standalone Installation and the Client-Server Installation.

- C If you have STORET v1.1 or v1.2 Database, a STORET v2.0 Database, have installed Oracle 8i Personal Edition and have it set as your primary Oracle Home, you will be able to perform the Migrate STORET v1.1/1.2 Data and the Client-Server Installation.

2.3.1 Installing STORET Data Entry Module and STORET Database

Follow the instruction below to install the STORET Data Entry Module v2.0 and STORET Database.

1. Using the Start\Programs\Oracle Installation Products\Oracle Home Selector, set ORAHOME81 as primary (this may already be set as primary) and reboot your system.
2. Insert the STORET Data Entry Module v2.0 CD (Disk 2) into your computer. The CD **will not** start automatically. Review the instructions in the file named “_README_FIRST.doc” on the root of the CD, and print a copy of the Installation Guide found in the Documents folder. Then run setup.exe on the root of the CD. You may be prompted to “install STORET v 2.0 Data Entry Application or migrate STORET v.1.1/1.2 data”; press <Yes> to begin.
3. The Wise Installation System may initially prompt you with the following message indicating that your computer needs the Microsoft Data Access Components (MDAC) installed. Press <OK> to install this component. The Wise Installation System will install this component and reboot your machine. If the Wise Installation System does not automatically restart, you will then need to begin the installation process again and return to this point.



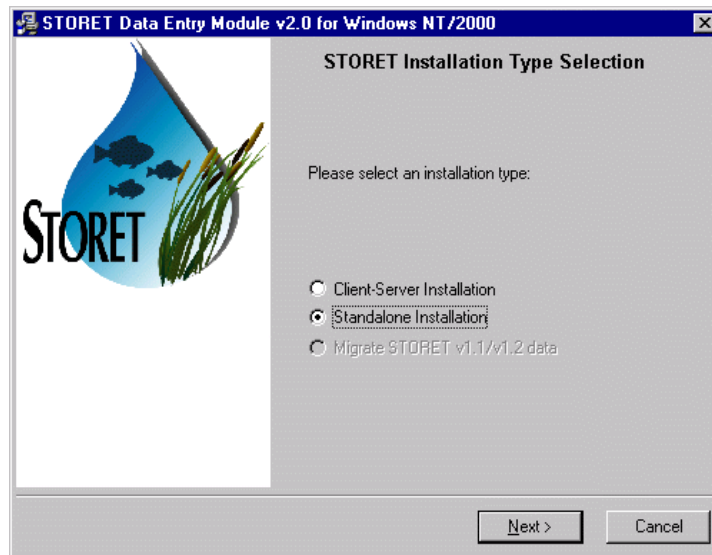
4. The welcome screen appears. Press the <Next> button to proceed to the next screen.



NOTE: An information message will appear if Oracle 8i Personal Edition is not installed on your computer or the ORAHOME81 is not set as the primary Oracle Home.

5. You will proceed to the STORET Installation Type Selection screen. Standalone Installation and Client-Server Installation options will be available. If you choose Client-Server Installation, refer to those instructions. If you choose Standalone Installation, press the <Next> button to proceed to the Drive Selection screen.

If the Standalone option is not available and you have Oracle 8i Personal Edition installed on your computer, follow the directions in Appendix F to trouble shoot and/or manually install the STORET database.



6. On the Drive Selection screen, you are given the option to choose the drives on which the STORET Data Entry Module and STORET Database will be installed. The disk space available on each drive is noted. A disk space check is performed before you can proceed to the next screen. If you do not have enough disk space on the selected drives, a message will appear and you will be unable to proceed to the next step. If disk space is sufficient for both drives, you will proceed to the Start Standalone Installation screen when you press the **<Next>** button.
7. On the Start Standalone Installation screen, you will see that you are installing the STORET Data Entry Module and STORET Database on the selected drives. Press the **<Next>** button to start the installation.

If you receive a Database Creation Warning message, press **<OK>** if an existing STORET v2.0 database is **NOT** present.

Note that a DOS window will appear to sit with no activity for approximately 30 to 45 minutes in the earlier portion of the installation. The system is performing database creation activities, and will resume with recognizable progress after this period.

8. Once installation is complete, the next screen will indicate that the STORET Data Entry Module and STORET Database were successfully installed. The only option available is to press the **<Finish>** button to exit the process.

If you receive a message indicating the computer must be restarted to complete the installation, press **<OK>** and restart the computer.

You have completed the Standalone Installation for STORET v2.0. If you have data in a STORET v1.1/1.2 database and want to use it in this new application, follow the instructions in the section titled Migrate STORET v1.1/1.2 Data.

3.0 WINDOWS NT V4.0/2000/XP STANDALONE INSTALLATIONS

3.1 Report Module

This section provides instructions for installing the STORET Report Module v2.0. Although not recommended, instructions for performing a custom installation have also been provided in Appendix D.

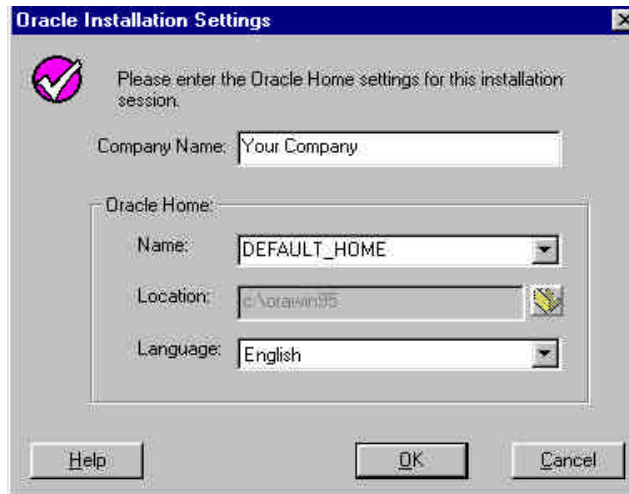
The STORET Report Module v2.0, the Oracle Forms runtime, Oracle Reports runtime, and other required Oracle components are provided in this installation. All aspects of the installation are managed by the Oracle Installer which comes on the CD provided. However, for those further interested in what actions the Installer will perform, the following possible scenarios that could be present on your workstation have been provided:

- C If the Oracle Forms and Reports runtime, and other required Oracle components are not present on your workstation, this installation will install them.
- C If the Oracle Forms and Reports runtime, and other required Oracle components are present on your workstation with an older version, this installation will upgrade all appropriate components. If you do not want to upgrade your Oracle products, then see Appendix D for performing a Custom Installation of the STORET Report Module v2.0. It should be noted, however, that failure to upgrade the Oracle products may cause the STORET Report Module v2.0 to work improperly.
- C If the Oracle Forms and Reports runtime, and other required Oracle components are present on your workstation with the same version, this installation will verify their presence and add any files that are missing.
- C If the Oracle Forms and Reports runtime, and Oracle Net8 components are present on your workstation with a newer version, this installation will provide a prompt asking you if you want to downgrade each component to the ones provided on this CD. You should press <No> to prevent a downgrade of each identified Oracle component, and continue with installing the other components included in your STORET Report Module installation package.

3.1.1 Installing STORET Report Module v2.0

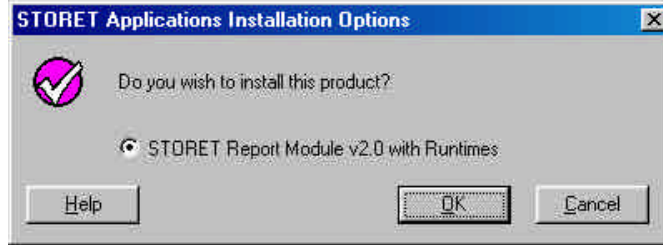
Follow these instructions to install the STORET Report Module v2.0.

1. Login to the workstation with administrator privileges. These are privileges to load software on the workstation. See your local administrator if these privileges have not been granted to you.
2. Close all applications and Oracle Services that may be running.
3. Insert the STORET Report Module v2.0 Installation CD (Disk 1) into your computer. The CD **will not** start automatically. Review the instructions in the file named “_README_FIRST.doc” on the root of the CD, and print a copy of the Installation Guide found in the Documents folder. Then run setup.exe on the root of the CD.
4. Enter a company name and leave the default_home as the Oracle Home. The default_home may be the only choice and is usually an appropriate choice. Accept all other default values. Press <OK>.



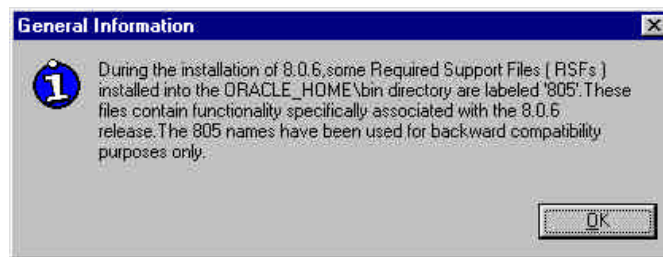
Note: The STORET Report Module v2.0 will be installed on the C: drive of the computer. If the C: drive is unavailable, or a different drive is desired, refer to the section titled “Changing Drive Location” in Appendix D of this document.

5. After successful entry in the Oracle Installation Settings window, you will be provided a confirmation dialog box. Press <OK> to load the STORET Report Module v2.0 with the Oracle Forms and Reports runtime components.

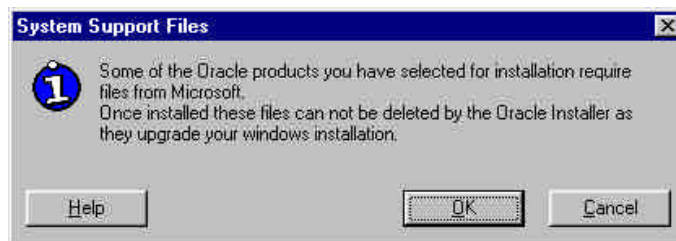


- The installation will take from 1 to 5 minutes depending upon existing Oracle software and computer performance.

Note: If you receive the following General Information message, press **<OK>**.

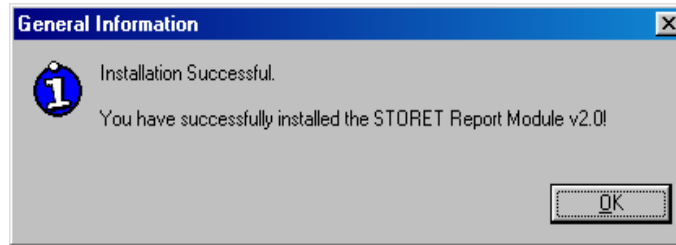


Note: If you receive the following Microsoft upgrade message, press **<OK>**.



If a Net8 failure message appears, press **<OK>**, reboot and re-run the installation.

- An Installation Successful message will appear when the installation is complete. Press **<OK>** and close any open windows. To run the STORET Report Module you must be able to access a STORET v2.0 database from your Server or Standalone STORET Database.



3.2 Oracle 8i Personal Edition

Oracle 8i Personal Edition is an Oracle product not provided in the STORET v2.0 package, and must be acquired separately.

3.2.1 Installing Oracle 8i Personal Edition

These are instructions for installing Oracle 8i Personal Edition for Windows NTv4.0/2000/XP.

NOTE: For further technical assistance with operating system/Oracle issues beyond the scope of this document, please refer to <http://www.oracle.com>.

1. Login to the workstation with administrator privileges. These are privileges to load software on the workstation. See your local administrator if these privileges have not been granted to you.
2. Insert the Oracle 8i Personal Edition CD (for NT/2000) into your computer. The CD should start automatically, if not, then run setup.exe on the root of the CD.
3. If the Oracle Introductory screen appears first, select the choice to Install/Deinstall Products. If not, then see the step below.

If you have a Pentium 4 and the Oracle Universal Installer will not start, or you receive a jrew/java error message while attempting to install, refer to Appendix E under **Pentium 4 Assistance**. You will be guided through the Custom Install process, and advised to eliminate the Oracle Product "Oracle HTTP Server", which does not function properly on the Pentium 4 chip. Once you have completed the Oracle Custom Install, proceed with the installation of the STORET Version 2.0 Data Entry Module and Database using Disk 2.

4. On the Welcome screen, press the <Next> button to proceed to the File Locations screen.
(If you do not receive the Welcome screen proceed to Appendix E.)

5. On the File Locations screen, type ORAHOME81 into the Destination field as the name of the Oracle Home. Type *C:\oracle\ora81* as the path. Press the <Next> button to proceed to the Available Products screen.
6. On the Available Products screen, choose Oracle 8i Personal Edition. Press the <Next> button to proceed to the Installation Types screen.
7. On the Installation Types screen, choose the <Minimal> option. Press the <Next> button to proceed to the next screen.
8. If the Upgrade or Migrate an Existing Database screen appears, **DO NOT** choose any options. Press the <Next> button to proceed to the Select Starter Database screen.
9. When prompted to create a new or starter database, choose <No>. Press the <Next> button to proceed to the Summary screen.
10. On the Summary screen, you will see the summary of your selections. Press the <Install> button to start the installation.
11. On the Net8 Configuration screen, choose <Perform Typical Configuration> option. Press the <Next> button to proceed.
12. Press the <Exit> button to exit the installation, and confirm <Yes> that you really want to exit. Note that the previously mentioned jrew/java error message associated with a Pentium 4 may appear at the end of the installation. If the instructions in Appendix E under Pentium 4 Assistance have been followed, this error message should be ignored.
13. By going to the Control Panel\Administrative Tools\Services, set the Oracle ORAHOME81 HTTPServer service to Manual and Oracle ORAHOME81 TNSListener service to Automatic, if these services are present. Note that the path may be Control Panel\Services without the Administrative Tools on some platforms such as Windows NT. The path may be Control Panel\Performance and Maintenance\Administrative Tools\Services on Windows XP.
14. You may close all Windows when finished.

3.3 STORET Data Entry Module and STORET Database

This section provides the installation instructions for the STORET Data Entry Module v2.0. These instructions should be followed step-by-step for proper installation of the software.

The STORET Data Entry Module CD (Disk 2) can perform 3 installation functions:

- C Client-Server Installation - Installs the STORET Data Entry Module v2.0 only.
- C Standalone Installation - Installs the STORET Data Entry Module v2.0 and STORET Database.
- C Migrate STORET v1.1/1.2 data - Converts an existing STORET v1.1 or v1.2, Oracle 7.3.4 database into a STORET v2.0, Oracle 8i Personal Edition database.

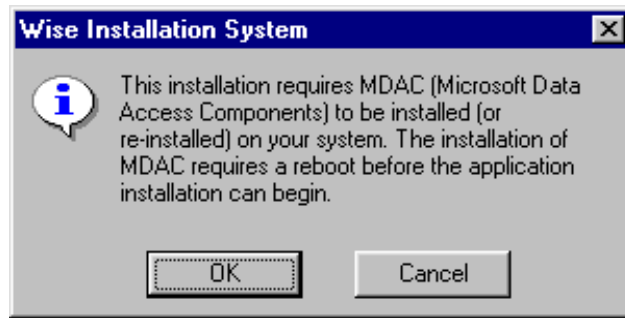
The available installation functions will vary depending upon the current configuration of your computer. Below are the available options given typical configurations:

- C If Oracle 8i Personal Edition is not installed on your computer and not set as the primary Oracle Home, you will only be able to perform the Client-Server Installation.
- C If you have installed Oracle 8i Personal Edition and this is set as your primary Oracle Home, you will be able to perform the Standalone Installation and the Client-Server Installation.
- C If you have STORET v1.1 or v1.2 Database, a STORET v2.0 Database, have installed Oracle 8i Personal Edition and have it set as your primary Oracle Home, you will be able to perform the Migrate STORET v1.1/1.2 Data and the Client-Server Installation.

3.3.1 Installing STORET Data Entry Module and STORET Database

1. Login to the workstation with administrator privileges. These are privileges to load software on the workstation. See your local administrator if these privileges have not been granted to you.
2. Using the Start\Programs\Oracle Installation Products\Oracle Home Selector, set ORAHOME81 as primary (this may already be set as primary) and reboot your system. Note: Manual rebooting may not be necessary for Windows NT/2000.
3. Insert the STORET Data Entry Module v2.0 CD (Disk 2) into your computer. The CD **will not** start automatically. Review the instructions in the file named “_README_FIRST.doc” on the root of the CD, and print a copy of the Installation Guide found in the Documents folder. Then run setup.exe on the root of the CD. You may be prompted to “install STORET v 2.0 Data Entry Application or migrate STORET v.1.1/1.2 data”; press <Yes> to begin.
4. The Wise Installation System may initially prompt with the following message that your computer needs the Microsoft Data Access Components (MDAC) installed. If the message appears, press <OK> to install this component. This installation will install this

component and reboot your machine. If you do not return to this point of the installation, you will then need to begin the installation process again and return to this point.



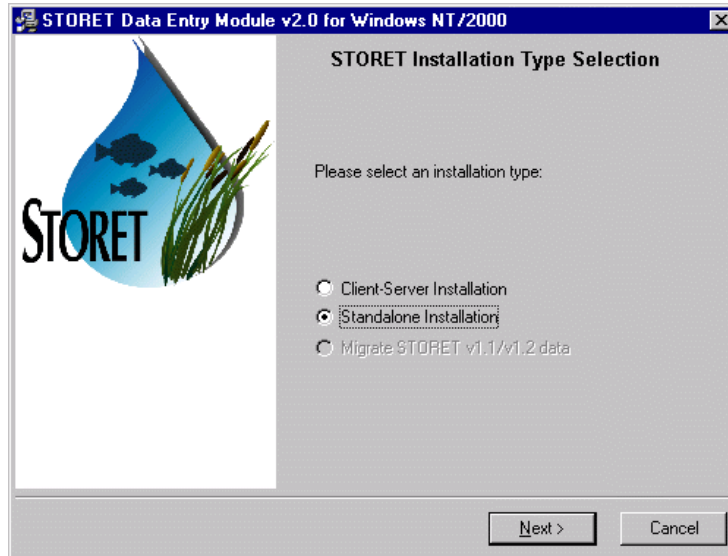
5. The welcome screen appears. Press the <Next> button to proceed to the next screen.



NOTE: An information message will appear if Oracle 8i Personal Edition is not installed on your computer or the ORAHOME81 is not set as the primary Oracle Home.

6. You will proceed to the STORET Installation Type Selection screen. Standalone Installation and Client-Server Installation options will be available. If you choose Client-Server Installation, refer to those instructions. If you choose Standalone Installation, press the <Next> button to proceed to the Drive Selection screen.

If the Standalone option is not available and you have Oracle 8i Personal Edition installed on your computer, follow the directions in Appendix F to trouble shoot and/or manually install the STORET database.



7. On the Drive Selection screen, you are given the option to choose the drives on which the STORET Data Entry Module and STORET Database will be installed. The disk space available on each drive is noted. A disk space check is performed before you can proceed to the next screen. If you do not have enough disk space on the selected drives, a message will appear and you will be unable to proceed to the next step. If disk space is sufficient for both drives, you will proceed to the Start Installation screen when you press the **<Next>** button.
8. On the Start Standalone Installation screen, you will see that you are installing the STORET Data Entry Module and STORET Database on the selected drives. Press the **<Next>** button to start the installation.

If you receive a Database Creation Warning message, press **<OK>** if an existing STORET v2.0 database is **NOT** present.

Note that a DOS window will appear to sit with no activity for approximately 30 to 45 minutes in the earlier portion of the installation. The system is performing database creation activities, and will resume with recognizable progress after this period.

9. Once installation is complete, the next screen will indicate that the STORET Data Entry Module and STORET Database were successfully installed. The only option available is to press the **<Finish>** button to exit the process.

If you receive a message indicating the computer must be restarted to complete the installation, press **<OK>** and restart the computer.

You have completed the Standalone Installation for STORET v2.0. If you have data in a STORET v1.1/1.2 database and want to use it in this new application, follow the instructions in the section titled Migrate STORET v1.1/1.2 Data.

4.0 CLIENT-SERVER INSTALLATION

4.1 Report Module

This section provides instructions for installing the STORET Report Module v2.0. Although not recommended, instructions for performing a custom installation have also been provided in Appendix D.

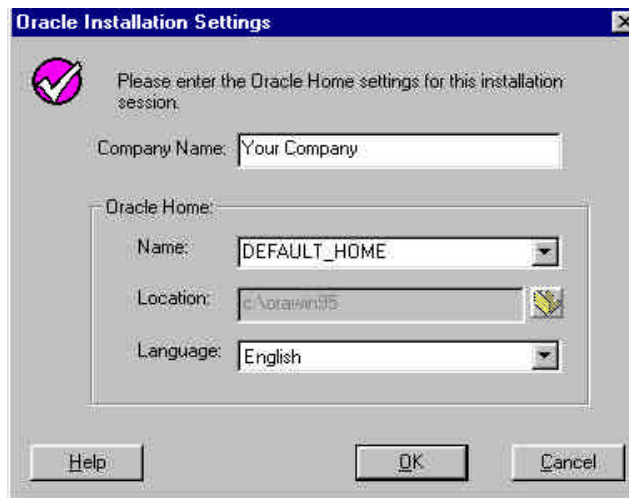
The STORET Report Module v2.0, the Oracle Forms runtime, Oracle Reports runtime, and other required Oracle components are provided this installation. All aspects of the installation are managed by the Oracle Installer which comes on the CD provided. However, for those further interested in what actions the Installer will perform, the following possible scenarios that could be present on your workstation have been provided:

- C If the Oracle Forms and Reports runtime, and other required Oracle components are not present on your workstation, this installation will install them.
- C If the Oracle Forms and Reports runtime, and other required Oracle components are present on your workstation with an older version, this installation will upgrade all appropriate components. If you do not want to upgrade your Oracle products, then see Appendix D for performing a Custom Installation of the STORET Report Module v2.0. It should be noted, however, that failure to upgrade the Oracle products may cause the STORET Report Module v2.0 to work improperly.
- C If the Oracle Forms and Reports runtime, and other required Oracle components are present on your workstation with the same version, this installation will verify their presence and add any files that are missing.
- C If the Oracle Forms and Reports runtime, and Oracle Net8 components are present on your workstation with a newer version, this installation will provide a prompt asking you if you want to downgrade each component to the ones provided on this CD. You should press <No> to prevent a downgrade of each identified Oracle component, and continue with installing the other components included in your STORET Report Module installation package.

4.1.1 Installing STORET Report Module v2.0

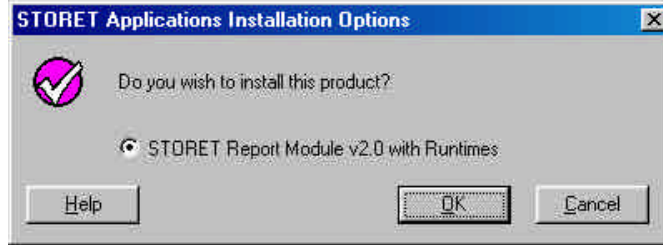
Follow these instructions to install the STORET Report Module v2.0.

1. Close all applications that may be running.
2. Insert the STORET Report Module v2.0 Installation CD (Disk 1) into your computer. The CD **will not** start automatically. Review the instructions in the file named “_README_FIRST.doc” on the root of the CD, and print a copy of the Installation Guide found in the Documents folder. Then run setup.exe on the root of the CD.
3. Enter a company name and leave the default_home as the Oracle Home. The default_home may be the only choice and is usually an appropriate choice. Accept all other default values. Press <OK>.



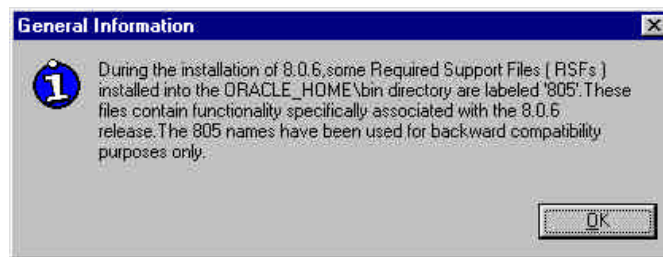
Note: The STORET Report Module v2.0 will be installed on the C: drive of the computer. If the C: drive is unavailable, or a different drive is desired, refer to the section titled “Changing Drive Location” in Appendix D of this document.

4. After successful entry in the Oracle Installation Settings window, you will be provided a confirmation dialog box. Press <OK> to load the STORET Report Module v2.0 with the Oracle Forms and Reports runtime components.



5. The installation will take from 1 to 5 minutes depending upon existing Oracle software and computer performance.

Note: If you receive the following Oracle 8.0.5 message, press <OK>.

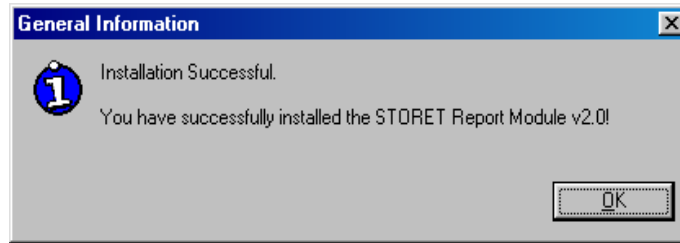


Note: If you receive the following Microsoft upgrade message, press <OK>.



If a Net8 failure message appears, press <OK>, reboot and re-run the installation.

6. An Installation Successful message will appear when the installation is complete. To run the STORET Report Module you must be able to access a STORET v2.0 database from your Sever or Standalone STORET Database.



4.2 STORET Data Entry Module and STORET Database

This section provides the installation instructions for the STORET Data Entry Module v2.0. These instructions should be followed step-by-step for proper installation of the software.

The STORET Data Entry Module CD (Disk 2) can perform 3 installation functions:

- C Client-Server Installation - Installs the STORET Data Entry Module v2.0 only.
- C Standalone Installation - Installs the STORET Data Entry Module v2.0 and STORET Database.
- C Migrate STORET v1.1/1.2 data - Converts an existing STORET v1.1 or v1.2, Oracle 7.3.4 database into a STORET v2.0, Oracle 8i Personal Edition database.

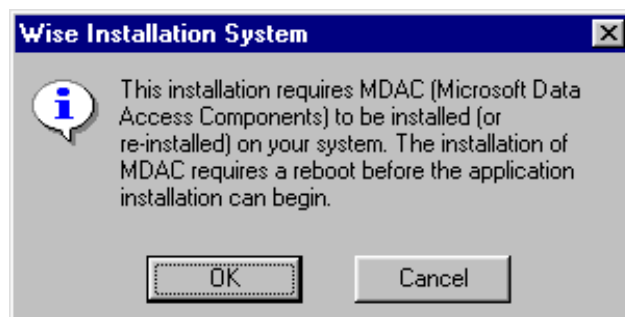
The available installation functions will vary depending upon the current configuration of your computer. Below are the available options given typical configurations:

- C If Oracle 8i Personal Edition is not installed on your computer and not set as the primary Oracle Home, you will only be able to perform the Client-Server Installation.
- C If you have installed Oracle 8i Personal Edition and this is set as your primary Oracle Home, you will be able to perform the Standalone Installation and the Client-Server Installation.
- C If you have STORET v1.1 or v1.2 Database, a STORET v2.0 Database, have installed Oracle 8i Personal Edition and have it set as your primary Oracle Home, you will be able to perform the Migrate STORET v1.1/1.2 Data and the Client-Server Installation.

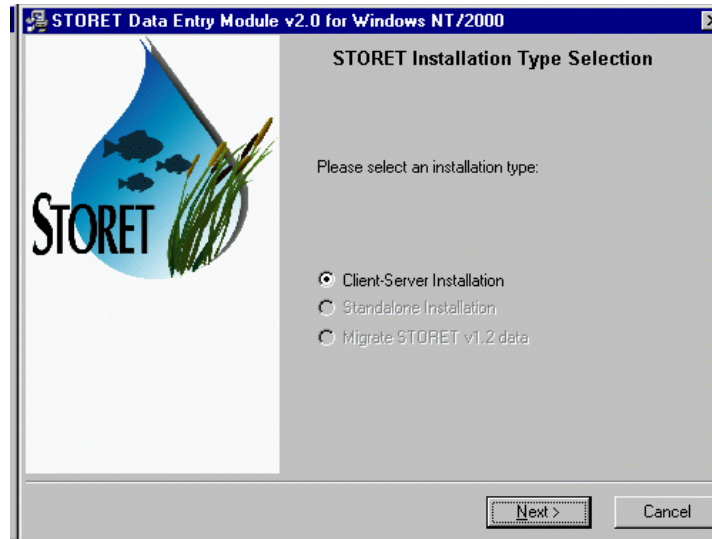
4.2.1 Installing the STORET Data Entry Module

The Client-Server Installation installs STORET v2.0 Data Entry Module interface. The Oracle 8i Client, including Oracle Provider for OLEDB and ODBC Drivers, have to be installed on all client-side computers, and ORAHOME81 set as the primary Oracle Home prior to performing this installation. This may be installed on Windows 98/NT/2000/XP.

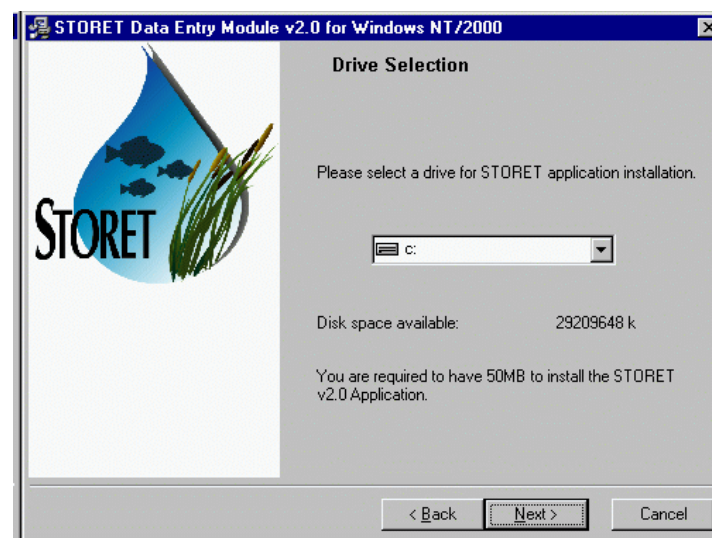
1. Login to the workstation with administrator privileges. These are privileges to load software on the workstation. See your local administrator if these privileges have not been granted to you.
2. Using the Start\Programs\Oracle Installation Products\Oracle Home Selector, set ORAHOME81 as primary (this may already be set as primary) and reboot your system. Note: Manual rebooting may not be necessary for Windows NT/2000.
3. Insert the STORET Data Entry Module v2.0 CD (Disk 2) into your computer. The CD **will not** start automatically. Run setup.exe on the root of the CD. You may be prompted to “install STORET v 2.0 Data Entry Application or migrate STORET v.1.1/1.2 data”; press <Yes> to begin.
4. The Wise Installation System may initially prompt with the following message that your computer needs the Microsoft Data Access Components (MDAC) installed. If the message appears, press <OK> to install this component. This installation will install this component and reboot your machine. If you do not return to this point of the installation, you will then need to begin the installation process again and return to this point.



5. The welcome screen appears. Press the <Next> button to proceed to the next screen.
6. You will proceed to the STORET Installation Type Selection screen. At minimum, the Client-Server Installation choice will be available; select this choice. Press the <Next> button to proceed to the Drive Selection screen.



7. On the Drive Selection screen, you are given the option to choose what drive STORET v2.0 application software is installed. The disk space available is noted. A disk space check is performed before you can proceed to the next screen. If you do not have enough disk space on the selected drive, a message will appear and you will be unable to proceed to the next step. If disk space is sufficient, you will proceed to the Start Installation screen when you press the <Next> button.



8. On the Start Installation screen, you will see that you are installing STORET v2.0 application on the selected drive. Press the <Next> button to start the installation.
9. Once installation is complete, the next screen will indicate that the software was successfully installed. The only option available is to press the <Finish> button to exit the process.

10. Set up a SQL*Net connection by creating a new entry in the TNSNAMES.ora file located where Oracle 8i Client is installed. Note: If you used Appendix F - Manual Installation of STORET Database with Personal Oracle 8.1.7, this action is already completed.

4.2.2 Installing Server Database

This section is intended for Database Administrators (DBAs) who are managing the STORET database on a server. It is possible to use the Standalone Installation option provided as part of the packaged installation on the STORET Data Entry Module v2.0 (Disk 2) CD to create the STORET v2.0 database. However for various reasons (e.g., security, Unix environment, desire not to have the Data Entry interface loaded) this may not be feasible. The following outline provides the steps that would have been executed by the packaged database creation. This information should assist DBAs in replicating the database creation task.

Note: The Oracle 8i Client, including Oracle Provider for OLEDB and ODBC Drivers, has to be installed on all client-side computers, and ORAHOME81 set as the primary Oracle Home prior to performing this installation.

- C Registry entries for Oracle are created.
- C The STO2 instance is created.
- C Schema owners STORET and STORET1 are created.
- C The STORET v2.0 Database is created in the new STO2 instance.
- C Network files are edited as appropriate.
- C Shortcuts are created to start and stop the database.
- C Registry entries for STORET are created.

The scripts that create the database, and a createdb.txt file with additional details are provided under the DBA folder in a subfolder named V20Database. *These files will need to be edited to conform to specific drives, Oracle homes, and other environmental variations.*

5.0 MIGRATE STORET V1.1/1.2 DATA

Before Migration, the STORET v2.0 Database contains data under Organization DEMOTEST which illustrates the new features of STORET, and is compatible with the example batch files provided on the STORET v2.0 CD.

Migration of your STORET v1.1/1.2 data will replace the STORET v2.0 DEMOTEST data with the DEMOTEST data from your STORET v1.1/1.2 database. You may optionally reinstall only the DEMOTEST v2.0 test data by executing the demotest.bat file found in DBA\DEMOTEST folder on the STORET Disk 2 CD. DEMOTEST data from STORET v1.1/1.2 can not coexist with DEMOTEST data from STORET v2.0.

5.1 Standalone Migration for Windows 98/NT/2000/XP

This procedure assumes that a STORET v1.1/1.2, Oracle 7.3.4 database exists, and that a STORET v2.0 Database, Oracle 8i Personal Edition has been created. If this is not true, see information box below (titled: If the Migrate STORET v1.1/1.2 Data option is not available).

This procedure migrates an existing STORET v1.1/1.2, Oracle 7.3.4 database into a STORET v2.0, Oracle 8i Personal Edition database. This may be performed on Windows 98/NT/2000/XP.

1. Set ORAHOME81 as primary using the Start\Programs\Oracle Installation Products\Oracle Home Selector (this may already be set as primary) and reboot your system. Manual rebooting may not be necessary for Windows NT/2000/XP.
2. Insert the STORET Data Entry Module v2.0 CD (Disk 2) into your computer. The CD **will not** start automatically. Review the instructions in the file named “_README_FIRST.doc” on the root of the CD, and print a copy of the Installation Guide found in the Documents folder. Then run setup.exe on the root of the CD.
3. After pressing <Next> on the Welcome screen, you will proceed to the STORET Installation Type Selection screen. Migrate STORET v1.1/1.2 Data and Client-Server Installation options will be available. Choose Migrate STORET v1.1/1.2 Data, and press the <Next> button to proceed to the Drive Selection screen.

If the Migrate STORET v1.1/1.2 Data option is not available:

If you are already operating STORET v1.1/1.2 using Oracle 8i Personal Edition or higher, or otherwise failing the validation that checks for the existence of a STORET Database using Oracle 7.3.4, data can be migrated to a STORET v2.0 Database by placing a *full export* dump file (i.e., Oracle Export file) of the STORET v1.1/1.2 in the STORET v2.0 import directory (i.e., c:\storet\orasto2\import\). The name of the STORET v1.1/1.2 dump file must be STORET12.dmp. When the dump file exists in this directory, the Migrate STORET v1.1/1.2 Data option will be available. Note that the Export Data function in the STORET System Administration area will not produce the full export required for this installation.

To create a *full export* dump file:

In a DOS prompt, type “exp <username>/<password>@<connection string> full=yes file=STORET12.dmp”, then <Enter>.

4. On the Drive Selection screen, you are given the option to choose which drive will be used for creating temporary files for migrating the STORET v1.1/1.2 data. The disk space available is noted. A disk space check is performed before you can proceed to the next screen. If you do not have enough disk space on the selected drive, a message will

appear and you will be unable to proceed to the next step. If disk space is sufficient, you will proceed to the Start Migration screen when you press the <Next> button.

5. Ensure that all open connections to the STORET v1.1/1.2 database are closed (i.e., no one should be logged on the STORET v1.1/1.2 database).
6. On the Start Migration screen, you will see that you are migrating STORET v1.1/1.2 data and the selected temporary drive. Press the <Next> button to start migration. You will be reminded to close any open connections to the STORET v1.1/1.2 database with a message stating: “If you have open sessions/connections to STORET v1.1/1.2 database, please close them and continue by pressing OK.”
7. Once migration is complete, the next screen will indicate that the migration was successful. The only option available is to press the <Finish> button to exit the process.

5.2 Server Data Migration

This section is intended for Database Administrators (DBAs) who are managing the STORET database on a server. It is possible to use the Migrate STORET v1.1/1.2 Data option provided as part of the packaged installation on the STORET Data Entry Module v2.0 (Disk 2) CD to migrate STORET v1.1/1.2 data to STORET v2.0. However for various reasons (e.g., security, Unix environment) this may not be feasible. The following outline provides the steps that would have been executed by the packaged migration. This information should assist DBAs in replicating the migration task.

- C A dump file of the STORET v1.1/1.2 database is created and stored in a temporary location.
- C The STORET v2.0 tables are dropped in the STORET and STORET1 schemata.
- C The STORET v1.1/1.2 dump file, containing STORET and STORET1 schemata, is imported into the STORET v2.0 database.
- C The FIX012.dmp is imported into the STORET v2.0 database, and supporting FIX012 scripts are run. This provides some of the reference table updates for the STORET and STORET1 schemata. This dump and scripts are interdependent and compatible with the STORET v1.1/1.2 database.
- C The scripts that modify the table structure of the STORET and STORET1 schemata to version 2.0, and make the needed modifications to the user data (STORET1) are run in a specific sequence. Note that updates to the STORET schema data will be performed, but discarded and replaced with the storet.dmp import to follow.

- C All tables in the STORET schema are dropped.
- C The STORET schema from the storet.dmp file is imported into the STORET v2.0 database.
- C The temporary files are deleted.

The migration scripts that modify the user data, and a migrate.txt file providing the order the scripts must be run, are provided under the DBA folder in a subfolder named Migration.

APPENDIX A - STORET Version 2.0 Installation for Oracle 9i

A-1.0 INTRODUCTION

This appendix provides the information necessary to install STORET v2.0 using Oracle 9i.

If you have a STORET v1.1/1.2 database, it is recommended that you backup your database by using the System Administration\Export Data feature in the STORET Data Entry Module. Select all Organizations for export. A Database Administrator can also create a backup outside of the STORET application.

These instructions have been divided into the following sections:

- C Standalone Installation for Windows NT/2000/XP.
Covers installation of the STORET Report Module, Oracle 8i Client (8.1.7), Oracle 9i Rel. 2 Personal Edition, STORET Data Entry Module with STORET Database.
- C Client-Server Installation.
Covers installation of the STORET Data Entry Module.
- C Data Migration.
Covers conversion of an existing STORET v1.1/1.2, Oracle 7.3.4 database into a STORET v2.0, Oracle 9i Personal Edition database.

The sequence in which the STORET and Oracle components are installed is important to facilitate the easiest possible installation.

The sequence of events for Standalone Installation is as follows:

- C Report Module.
- C Oracle 8i Client.
- C Oracle 9i Personal Edition.
- C STORET Data Entry Module with STORET Database.

If a local Oracle 9i database has already been loaded on the computer, AND, no database currently exists, uninstall the Oracle 9i Personal Edition using the Start\Programs\Oracle Installation Products\Oracle Universal Installer. If unable to uninstall because a database currently exists, see Appendix C for proper home setup before beginning installation.

The approximate minimum time to complete each phase of installation is as follows:

C	STORET Report Module (with Oracle Runtimes)	-	1-5 minutes.
C	Oracle 8i Client	-	15 minutes.
C	Oracle 9i Personal Edition	-	1 hour.
C	STORET Data Entry Module with STORET Database	-	1 hour.
C	Client-Server Installation (STORET Data Entry Module)	-	1-5 minutes.
C	Data Migration	-	2 hours-X days.

Note: Data migration time is highly variable depending upon the quantity and nature of existing data.

A-1.1 System Requirements

Minimum Hardware Requirements:

- C Pentium II 200 MHz or equivalent.
- C 128 MB RAM.
- C CD-ROM drive.
- C STORET Data Entry Module software - 50 MB.
- C STORET Report Module software (with Oracle Runtimes) - 250 MB.
- C STORET Database - 1.75 GB.

Minimum Software Requirements:

- C Windows NT (with Service Pack 6a), Windows 2000, Windows XP Professional.
- C Connectivity to an Oracle 9i database version 9.2.0.1.0 or higher.
- C Oracle 8i (8.1.7) client software.
- C Internet Explorer Version 5.0 or higher.
- C Adobe Acrobat Reader. Adobe Acrobat Reader is provided on the disk under the Acrobat folder; double-click "AcroReader51_ENU_full.exe" to install.

A-1.2 STORET Version 2.0 Components

STORET v2.0 references the following components:

- C STORET Report Module v2.0 - Provides capability for running STORET reports.
 - S Forms Runtime version: 6.0.8.8.0.
 - S Reports Runtime version 6.0.8.8.3.
- C Oracle 8i Client (8.1.7) - Oracle provided database client software.
- C Oracle 9i Rel. 2 (9.2.0.1.0) Personal Edition - Oracle provided database management system.
- C STORET Data Entry Module v2.0 - Provides capability for entering and editing STORET data.
- C STORET Database - STORET data files.

All STORET products will be loaded under a STORET directory on the root of the given drive. For example:

c:\STORET\STORV20 (STORET Data Entry Module)
c:\STORET\ORASTO2 (STORET Database)
c:\STORET\STRRPT (STORET Report Module)

A-2.0 STANDALONE INSTALLATIONS

A-2.1 Report Module

The Report Module must be loaded before the Oracle 8i Client. Follow the instructions in Section 3.1.

A-2.2 Oracle 8i Client

Oracle 8i Client is an Oracle product not provided in the STORET v2.0 package, and must be acquired separately.

A-2.3 Installing Oracle 8i Client

These are instructions for installing Oracle 8i Client for Windows NT/2000/XP.

NOTE: For further technical assistance with operating system/Oracle issues beyond the scope of this document, please refer to <http://www.oracle.com>.

1. Login to the workstation with administrator privileges. These are privileges to load software on the workstation. See your local administrator if these privileges have not been granted to you.
2. Insert the Oracle 8i Client (8.1.7) CD (for NT/2000) into your computer. The CD should start automatically; if not, then run setup.exe on the root of the CD.

If you have a Pentium 4 and the Oracle Universal Installer will not start, or you receive a jrew/java error message while attempting to install, copy the contents of the CD to a local temporary folder. Rename all occurrences of symcjit.dll to symcjit.ori on all local drives. Run setup.exe to start the install.

3. If the Oracle Introductory screen appears first, select the choice to Install/Deinstall Products; if not, then see the step below.

4. On the Welcome screen, press the <Next> button to proceed to the File Locations screen.
5. On the File Locations screen, type ORAHOME81 into the Destination field as the name of the Oracle Home. Type C:\oracle\ora81 as the path. Press the <Next> button to proceed to the Installation Types screen.
6. On the Installation Types screen, choose the <Custom> option. Press the <Next> button to proceed to the Available Product Components screen.
7. On the Available Product Components screen, select the following:

Oracle 8i Client.

- Net8 Products.
 - Net8 Client.

Oracle Utilities.

- Oracle Database Utilities.
- SQL*Plus.

C Oracle Programmer.

- Development Tools.
 - Oracle Provider for OLEDB.

NOTE: You must install Oracle Provider for OLEDB with this installation. If it is not listed, then it has already been installed on another Oracle home. Stop this installation and contact STORET Technical Support for assistance.

Deselect other components that may be selected by default. Press the <Next> button to proceed to the Component Locations screen.

8. On the Component Locations screen, press the <Next> button to proceed to the Summary screen.
9. On the Summary screen, you will see the summary of your selections. Press the <Install> button to start the installation.
10. On the Net8 Configuration screen, choose <Perform Typical Configuration> option. Press the <Next> button to proceed.

Upon pressing <Next>, if you see the welcome screen for the Net8 Configuration Assistant, press <Back> to return to the previous screen. Press <Next> again. This time it should complete the installation.

11. Press the <Exit> button to exit the installation, and confirm <Yes> that you really want to exit.

A-2.4 Oracle 9i Personal Edition

Oracle 9i Personal Edition is an Oracle product not provided in the STORET v2.0 package, and must be acquired separately.

A-2.5 Installing Oracle 9i Personal Edition

These are instructions for installing Oracle 9i Personal Edition for Windows NT/2000/XP.

NOTE: For further technical assistance with operating system/Oracle issues beyond the scope of this document, please refer to <http://www.oracle.com>.

1. Login to the workstation with administrator privileges. These are privileges to load software on the workstation. See your local administrator if these privileges have not been granted to you.
2. Insert the Oracle 9i Personal Edition CD (for NT/2000/XP) into your computer. The CD should start automatically; if not, then run setup.exe on the root of the CD.
3. If the Oracle Introductory screen appears first, select the choice to Install/Deinstall Products; if not, then see the step below.
4. On the Welcome screen, press the <Next> button to proceed to the File Locations screen.
5. On the File Locations screen, type ORAHOME92 into the Destination field as the name of the Oracle Home. Type *C:\oracle\ora92* as the path. Press the <Next> button to proceed to the Available Products screen.
6. On the Available Products screen, choose the <Oracle 9i Database> option. Press the <Next> button to proceed to the Installation Types screen.
7. On the Installation Types screen, choose the <Personal Edition> option. Press the <Next> button to proceed to the Database Configuration screen.
8. On the Database Configuration screen, choose <Software Only> option. Press the <Next> button to proceed to the Oracle Services for Microsoft Transaction Server screen.
9. On the Oracle Services for Microsoft Transaction Server screen, accept the default port number and press <Next> button to proceed to the next screen.

10. If the Upgrade or Migrate an Existing Database screen appears, **DO NOT** choose any options. Press the <Next> button to proceed to the Summary screen.
11. On the Summary screen, you will see the summary of your selections. Press the <Install> button to start the installation.
12. Press the <Exit> button to exit the installation, and confirm <Yes> that you really want to exit.
13. The Oracle Enterprise Manager may start automatically. Close this application without making any changes.

A-2.6 STORET Data Entry Module and STORET Database

This section provides the installation instructions for the STORET Data Entry Module v2.0. These instructions should be followed step-by-step for proper installation of the software.

The STORET Data Entry Module v2.0 CD for Oracle 9i can perform 3 installation functions:

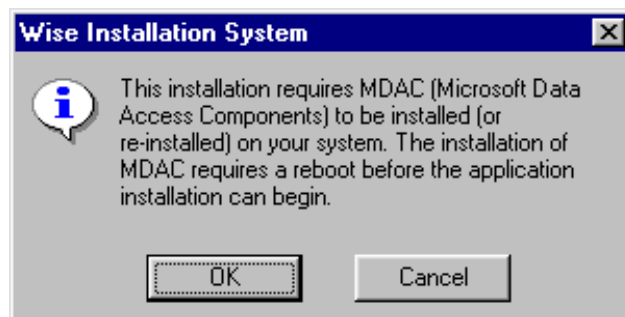
- C Client-Server Installation - Installs the STORET Data Entry Module v2.0 only.
- C Standalone Installation - Installs the STORET Data Entry Module v2.0 and STORET Database.
- C Migrate STORET v1.1/1.2 data - Converts an existing STORET v1.1 or v1.2, Oracle 7.3.4 database into a STORET v2.0, Oracle 9i Rel. 2 Personal Edition database.

The available installation functions will vary depending upon the current configuration of your computer. Below are the available options given typical configurations:

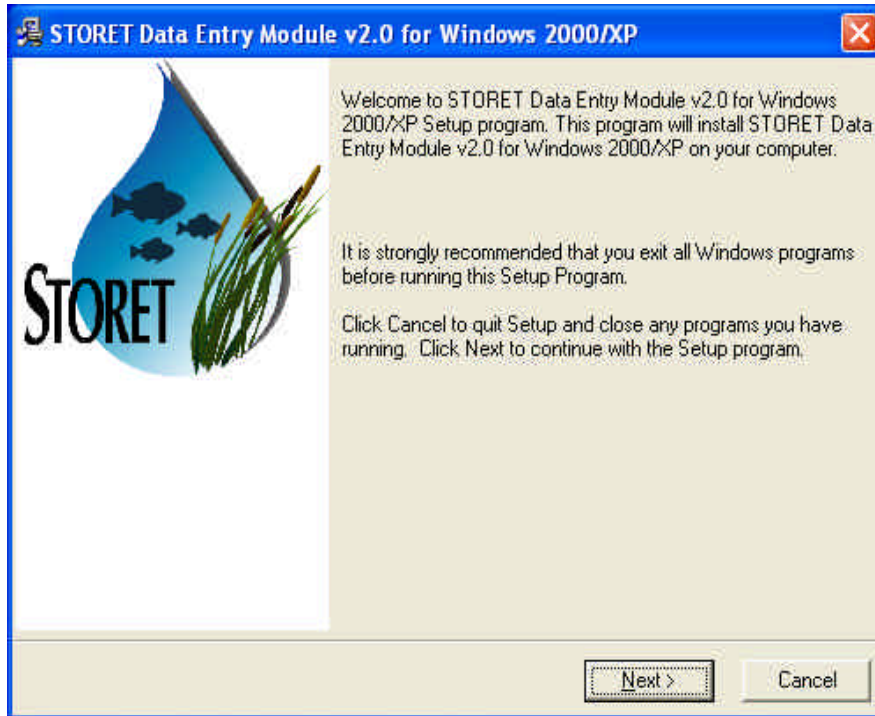
- C If Oracle 9i Personal Edition is not installed on your computer and not set as the primary Oracle Home, you will only be able to perform the Client-Server Installation.
- C If you have installed Oracle 9i Personal Edition and this is set as your primary Oracle Home, you will be able to perform the Standalone Installation and the Client-Server Installation.
- C If you have STORET v1.1 or v1.2 Database, a STORET v2.0 Database, have installed Oracle 9i Personal Edition and have it set as your primary Oracle Home, you will be able to perform the Migrate STORET v1.1/1.2 Data and the Client-Server Installation.

A-2.7 Installing STORET Data Entry Module and STORET Database

1. Login to the workstation with administrator privileges. These are privileges to load software on the workstation. See your local administrator if these privileges have not been granted to you.
2. Using the Start\Programs\Oracle Installation Products\Oracle Home Selector, set ORAHOME92 as primary.
3. Insert the STORET Data Entry Module v2.0 CD for Oracle 9i into your computer. The CD **will not** start automatically. Print a copy of the Installation Guide found in the Documents folder of the CD. Then run setup.exe on the root of the CD.
4. The Wise Installation System may initially prompt with the following message that your computer needs the Microsoft Data Access Components (MDAC) installed. If the message appears, press <OK> to install this component. This installation will install this component and reboot your machine. If you do not return to this point of the installation, you will then need to begin the installation process again and return to this point.

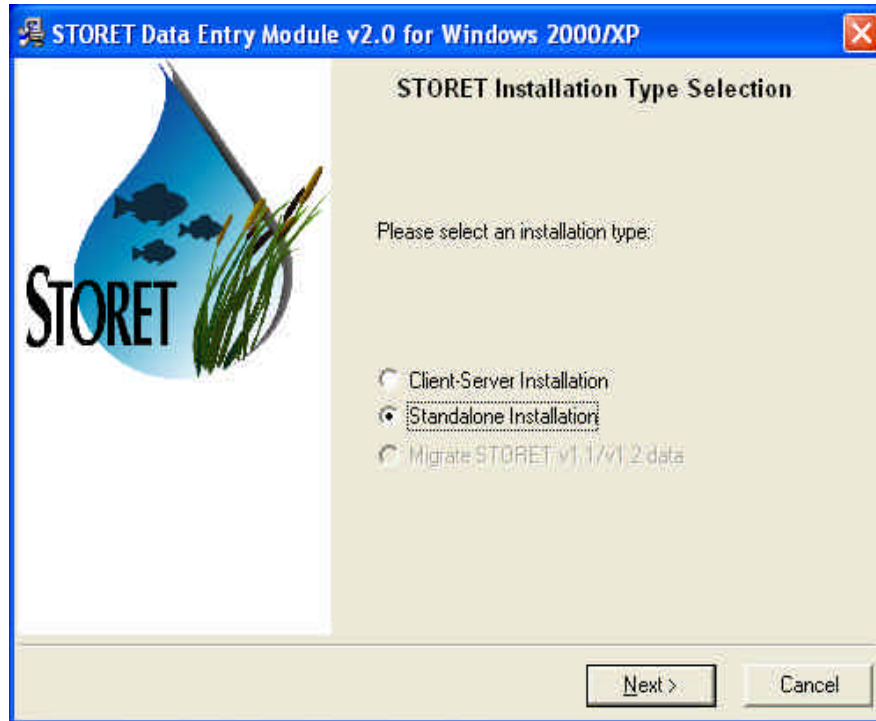


5. The welcome screen appears. Press the <Next> button to proceed to the next screen.



NOTE: An information message will appear if Oracle 9i Rel. 2 Personal Edition is not installed on your computer or ORAHOME92 is not set as the primary Oracle Home.

6. You will proceed to the STORET Installation Type Selection screen. Standalone Installation and Client-Server Installation options will be available. If you choose Client-Server Installation, refer to those instructions. If you choose Standalone Installation, press the <Next> button to proceed to the Drive Selection screen.



7. On the Drive Selection screen, you are given the option to choose the drives on which the STORET Data Entry Module and STORET Database will be installed. The disk space available on each drive is noted. A disk space check is performed before you can proceed to the next screen. If you do not have enough disk space on the selected drives, a message will appear and you will be unable to proceed to the next step. If disk space is sufficient for both drives, you will proceed to the Start Standalone Installation screen when you press the **<Next>** button.
8. On the Start Standalone Installation screen, you will see that you are installing the STORET Data Entry Module and STORET Database on the selected drives. Press the **<Next>** button to start the installation.

If you receive a Database Creation Warning message, press **<OK>** if an existing STORET v2.0 database is **NOT** present.

Note that a DOS window will appear to sit with no activity in the earlier portion of the installation. The system is performing database creation activities, and will resume with recognizable progress after this period.

9. Once installation is complete, the next screen will indicate that the STORET Data Entry Module and STORET Database were successfully installed. Press the **<Finish>** button to exit the process.

If you receive a message indicating the computer must be restarted to complete the installation, press <OK> and restart the computer.

You have completed the Standalone Installation for STORET v2.0. If you have data in a STORET v1.1/1.2 database and want to use it in this new application, follow the instructions in the section titled Migrate STORET v1.1/1.2 Data.

A-3.0 CLIENT-SERVER INSTALLATION

A-3.1 Report Module

The Report Module must be loaded before the Oracle 8i Client. Follow the instructions in Section 3.1.

A-3.2 STORET Data Entry Module and STORET Database

This section provides the installation instructions for the STORET Data Entry Module v2.0. These instructions should be followed step-by-step for proper installation of the software.

The STORET Data Entry Module v2.0 CD for Oracle 9i can perform 3 installation functions:

- C Client-Server Installation - Installs the STORET Data Entry Module v2.0 only.
- C Standalone Installation - Installs the STORET Data Entry Module v2.0 and STORET Database.
- C Migrate STORET v1.1/1.2 data - Converts an existing STORET v1.1 or v1.2, Oracle 7.3.4 database into a STORET v2.0, Oracle 9i Rel. 2 Personal Edition database.

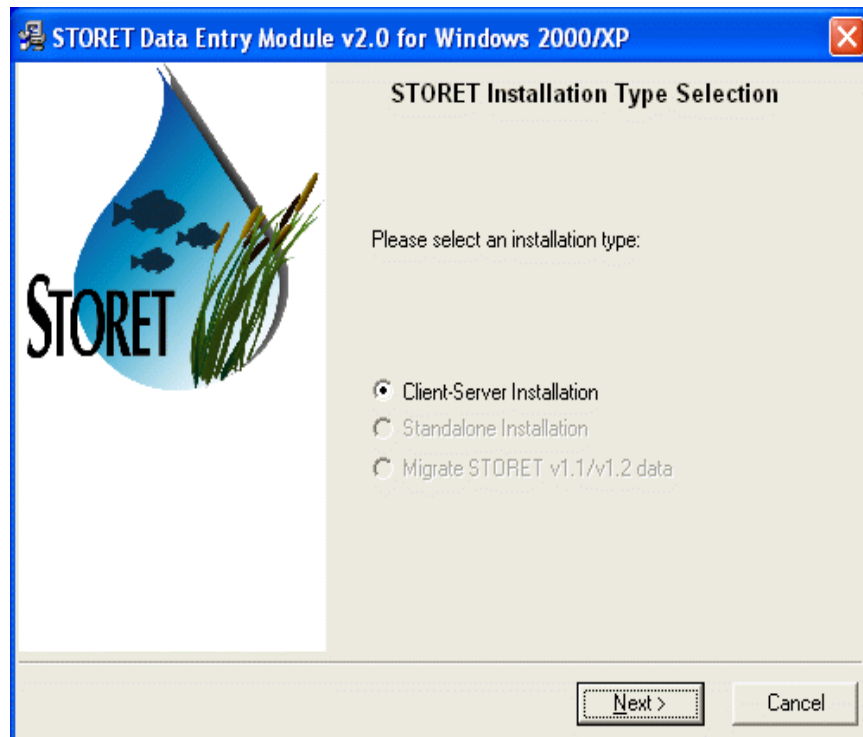
The available installation functions will vary depending upon the current configuration of your computer. Below are the available options given typical configurations:

- C If Oracle 9i Personal Edition is not installed on your computer and not set as the primary Oracle Home, you will only be able to perform the Client-Server Installation.
- C If you have installed Oracle 9i Personal Edition and this is set as your primary Oracle Home, you will be able to perform the Standalone Installation and the Client-Server Installation.
- C If you have STORET v1.1 or v1.2 Database, a STORET v2.0 Database, have installed Oracle 9i Personal Edition and have it set as your primary Oracle Home, you will be able to perform the Migrate STORET v1.1/1.2 Data and the Client-Server Installation.

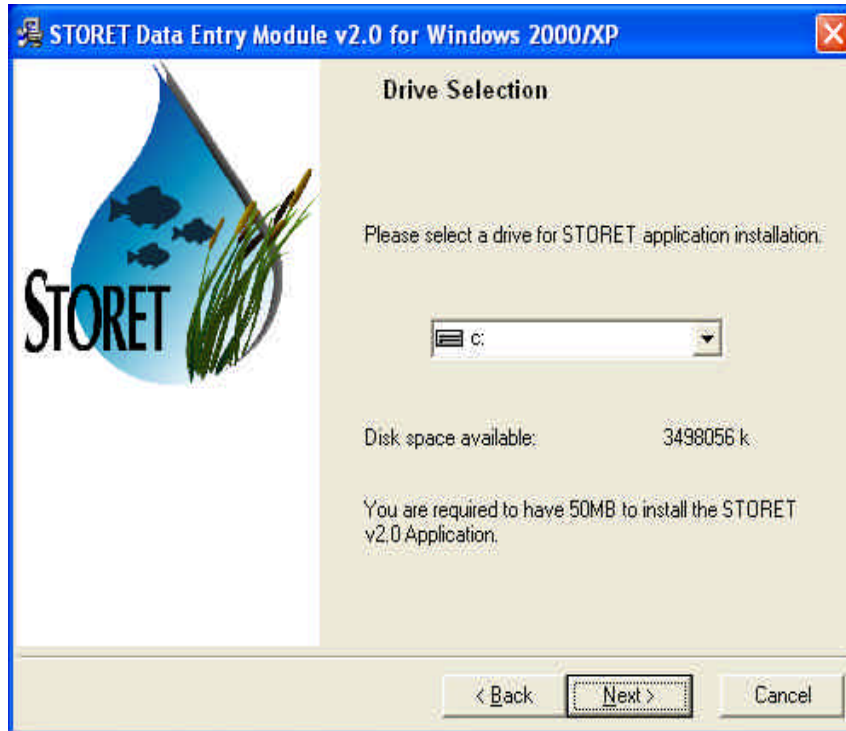
A-3.3 Installing STORET Data Entry Module

The Client-Server Installation installs STORET v2.0 Data Entry Module interface. This may be installed on Windows NT/2000/XP. The Oracle 8i Client, including Oracle Provider for OLEDB, have to be installed on all client-side computers, and ORAHOME81 set as the primary Oracle Home prior to performing this installation. See section “Installing Oracle 8i Client” for details.

1. The welcome screen appears. Press the <Next> button to proceed to the next screen.
2. You will proceed to the STORET Installation Type Selection screen. At minimum, the Client-Server Installation choice will be available; select this choice. Press the <Next> button to proceed to the Drive Selection screen.



3. On the Drive Selection screen, you are given the option to choose on which drive to install the STORET v2.0 application software. The disk space available is noted. A disk space check is performed before you can proceed to the next screen. If you do not have enough disk space on the selected drive, a message will appear and you will be unable to proceed to the next step. If disk space is sufficient, you will proceed to the Start Installation screen when you press the <Next> button.



4. On the Start Installation screen, you will see that you are installing the STORET v2.0 application on the selected drive. Press the **<Next>** button to start the installation.
5. Once installation is complete, the next screen will indicate that the software was successfully installed. Press the **<Finish>** button to exit the process.
6. Set up a SQL*Net connection by creating a new entry in the TNSNAMES.ora file located where Oracle 8i Client is installed.

A-3.4 Installing Server Database

This section is intended for Database Administrators (DBAs) who are managing the STORET database on a server. It is possible to use the Standalone Installation option provided as part of the packaged installation on this CD to create the STORET v2.0 database. However, for various reasons (e.g., security, Unix environment, desire not to have the Data Entry interface loaded) this may not be feasible. The following outline provides the steps that would have been executed by the packaged database creation. This information should assist DBAs in replicating the database creation task.

Note: The Oracle 8i Client, including Oracle Provider for OLEDB, has to be installed on all client-side computers, and ORAHOME81 set as the primary Oracle Home prior to performing this installation.

- C Registry entries for Oracle are created.
- C The STO2 instance is created.
- C Schema owners STORET and STORET1 are created.
- C The STORET v2.0 Database is created in the new STO2 instance.
- C Network files are edited as appropriate.
- C Shortcuts are created to start and stop the database.
- C Registry entries for STORET are created.

The scripts that create the database, and a createdb.txt file with additional details are provided under the DBA folder in a subfolder named V20Database. *These files will need to be edited to conform to specific drives, Oracle homes, and other environmental variations.*

A-4.0 MIGRATE STORET V1.1/1.2 DATA

Before Migration, the STORET v2.0 Database contains data under Organization DEMOTEST which illustrates the new features of STORET, and is compatible with the example batch files provided on the STORET v2.0 CD.

Migration of your STORET v1.1/1.2 data will replace the STORET v2.0 DEMOTEST data with the DEMOTEST data from your STORET v1.1/1.2 database. You may optionally reinstall only the DEMOTEST v2.0 test data by executing the demotest.bat file found in DBA\DEMOTEST folder on the original STORET v2.0 Disk 2 CD. DEMOTEST data from STORET v1.1/1.2 can not coexist with DEMOTEST data from STORET v2.0.

A-4.1 Standalone Migration for Windows NT/2000/XP

This procedure assumes that a STORET v1.1/1.2, Oracle 7.3.4 database exists, and that a STORET v2.0 Database, Oracle 9i Personal Edition has been created. If this is not true, see information box below (titled: If the Migrate STORET v1.1/1.2 Data option is not available).

This procedure migrates an existing STORET v1.1/1.2, Oracle 7.3.4 database into a STORET v2.0, Oracle 9i Rel. 2 Personal Edition database. This may be performed on Windows NT/2000/XP.

1. Set ORAHOME92 as primary using the Start\Programs\Oracle Installation Products\Oracle Home Selector.
2. Insert the STORET Data Entry Module v2.0 CD for Oracle 9i into your computer. The CD **will not** start automatically. Print a copy of the Installation Guide found in the Documents folder. Then run setup.exe on the root of the CD.

3. After pressing <Next> on the Welcome screen, you will proceed to the STORET Installation Type Selection screen. Migrate STORET v1.1/1.2 Data and Client-Server Installation options will be available. Choose Migrate STORET v1.1/1.2 Data, and press the <Next> button to proceed to the Drive Selection screen.

If the Migrate STORET v1.1/1.2 Data option is not available:

If you are already operating STORET v1.1/1.2 using Oracle 8i Personal Edition or higher, or otherwise failing the validation that checks for the existence of a STORET Database using Oracle 7.3.4, data can be migrated to a STORET v2.0 Database by placing a *full export* dump file (i.e., Oracle Export file) of the STORET v1.1/1.2 in the STORET v2.0 import directory (i.e., c:\storet\orasto2\import\). The name of the STORET v1.1/1.2 dump file must be STORET12.dmp. When the dump file exists in this directory, the Migrate STORET v1.1/1.2 Data option will be available. Note that the Export Data function in the STORET System Administration area will not produce the full export required for this installation.

To create a *full export* dump file:

In a DOS prompt, type “exp <username>/<password>@<connection string> full=yes file=STORET12.dmp”, then <Enter>.

4. On the Drive Selection screen, you are given the option to choose which drive will be used for creating temporary files for migrating the STORET v1.1/1.2 data. The disk space available is noted. A disk space check is performed before you can proceed to the next screen. If you do not have enough disk space on the selected drive, a message will appear and you will be unable to proceed to the next step. If disk space is sufficient, you will proceed to the Start Migration screen when you press the <Next> button.
5. Ensure that all open connections to the STORET v1.1/1.2 database are closed (i.e., no one should be logged on the STORET v1.1/1.2 database).
6. On the Start Migration screen, you will see that you are migrating STORET v1.1/1.2 data and the selected temporary drive. Press the <Next> button to start migration. You will be reminded to close any open connections to the STORET v1.1/1.2 database with a message stating: “If you have open sessions/connections to STORET v1.1/1.2 database, please close them and continue by pressing OK.”
7. Once migration is complete, the next screen will indicate that the migration was successful. The only option available is to press the <Finish> button to exit the process.

A-4.2 Server Data Migration

This section is intended for Database Administrators (DBAs) who are managing the STORET database on a server. It is possible to use the Migrate STORET v1.1/1.2 Data option provided as part of the packaged installation on this CD to migrate STORET v1.1/1.2 data to STORET v2.0. However, for various reasons (e.g., security, Unix environment) this may not be feasible. The following outline provides the steps that would have been executed by the packaged migration. This information should assist DBAs in replicating the migration task.

- C A dump file of the STORET v1.1/1.2 database is created and stored in a temporary location.
- C The STORET v2.0 tables are dropped in the STORET and STORET1 schemata.
- C The STORET v1.1/1.2 dump file, containing STORET and STORET1 schemata, is imported into the STORET v2.0 database.
- C The FIX012.dmp is imported into the STORET v2.0 database, and supporting FIX012 scripts are run. This provides some of the reference table updates for the STORET and STORET1 schemata. The dump and scripts are interdependent and compatible with the STORET v1.1/1.2 database.
- C The scripts that modify the table structure of the STORET and STORET1 schemata to version 2.0, and make the needed modifications to the user data (STORET1) are run in a specific sequence. Note that updates to the STORET schema data will be performed, but discarded and replaced with the storet.dmp import to follow.
- C All tables in the STORET schema are dropped.
- C The STORET schema from the storet.dmp file is imported into the STORET v2.0 database.
- C The temporary files are deleted.

The migration scripts that modify the user data, and a migrate.txt file providing the order the scripts must be run, are provided under the DBA folder in a subfolder named Migration.

APPENDIX B - Uninstalling STORET Applications

B-1.0 UNINSTALLING STORET V1.2 AND RELATED ORACLE APPLICATIONS

B-1.1 Uninstalling STORET Report Module v1.2

The STORET Report Module v1.2 software was loaded in a different directory than STORET Report Module v2.0. Three manual steps need to be taken to remove all vestiges of the STORET Report Module v1.2.

1. **Delete the STORET Report Module v1.2 directory:** Using Windows Explorer, go to your <Program Files> files directory and delete the <STRRPT> directory and all the contents.
2. **Remove Registry Entries for STORET Report Module v1.2:** (NOTE: WE SUGGEST CONTACTING THE STORET TECHNICAL SUPPORT BEFORE PERFORMING THIS STEP. EDIT REGISTRY ENTRIES WITH CAUTION) From the <Start> menu, choose <Run...>. Enter "regedit" and press <OK>. Expand the HKEY_LOCAL_MACHINE, Software, and ORACLE directories. Two registries will need to be modified. They can be modified by highlighting the registry name, then <Edit> from the menu bar, and choosing <Modify>. You need to modify the FORMS60_PATH and REPORT60_PATH, and delete all entries beginning with "c:\Program Files\STRRPT\". Ensure that there is only one semi-colon between the remaining entries.
3. **Remove STORET Report Module v1.2 from your Program Group:** On your computer, go to <Start>, then <Programs>, then put your cursor on the STORET Report Module v1.2 choice and right click your mouse. Press <Delete> to remove the STORET Report Module v1.2 program group.

B-1.2 Uninstalling STORET Data Entry Module v1.1/1.2

1. If it is running, close the STORET Application.
2. Select Start\Programs\STORET System v1.2\Uninstall. Answer "Yes" to the "are you sure" window which appears, and "OK" to the "Remove Everything" warning.

During this uninstall you may see warnings concerning the deletion of certain categories of files. You should select "Yes to All" in every case. It is normal for this uninstall to be unable to remove all parts of STORET. You should ignore the information message which appears as the uninstall is running.

B-1.3 Uninstalling STORET v1.1/1.2 Database

Warning: After executing this procedure, your copy of the STORET v1.1/1.2 database cannot be recovered except through re-installation, which will reset all tables in the database to their "factory" condition. You **will lose** all changes you have made to STORET v1.1/1.2.

To Uninstall the STORET v2.0 Database, execute the following instructions:

1. If the STORET v1.1/1.2 database is running, stop the STORET v1.1/1.2 database by selecting Start\Programs\STORET System v1.2\Stop Database.
2. Search for the ORASTOR folder. Delete the folder and all its contents. This folder will likely be on the root of the given drive.
3. Search for the INITSTOR.ORA file and delete it. This file should be under a DATABASE folder, but any further directory structure may be variable.
4. Search for the PWDSTOR.ORA file and delete it. This file should be under a DATABASE folder, but any further directory structure may be variable.

B-1.4 Uninstalling Oracle 7.3.4

See the section titled Remove Oracle Products in the Personal Oracle 7 Installation Release 7.3.4 for Windows NT and Windows 95 document provided on this CD in the Documents folder as the file titled **Oracle 7 Documentation.htm**. Note that this document has been extracted from its original Oracle location; therefore, icons and hyperlinks may not be active.

B-2.0 UNINSTALLING STORET V2.0 AND RELATED ORACLE APPLICATIONS

B-2.1 Uninstalling STORET Report Module v2.0

Follow these instructions to uninstall the STORET Report Module v2.0.

1. On your computer, go to Start\Programs\Oracle for Windows 95 (for Windows 95/98 operating systems) or Oracle for Windows NT (for Windows NT/2000 operating systems), and open the Oracle Installer.
2. From the Oracle Asset Manager, highlight the STORET Report Module 2.0 component and press <**Remove**>. The STORET Report Module v2.0 will be removed from your computer.

B-2.2 Uninstalling STORET Data Entry Module v2.0

Follow these instructions to uninstall the STORET Data Entry Module v2.0.

1. On your computer, go to Start\Settings\Control Panel. Double-click <**Add/Remove Programs**>.
2. Highlight the STORET Data Entry Module v2.0 application and press <**Remove**>.
3. The Uninstall Program will begin. Choose the Automatic selection and press <**Next**>.
4. On the Perform Uninstall window, press <**Finish**> to uninstall STORET Data Entry Module v2.0.
5. To uninstall the database, go to <**Oracle Database Configuration Assistant**> and select <**Delete a database**> procedure, and then carefully choose the database instance that you want to delete.
6. Several registry entries may optionally be removed after deleting the database. Go to Registry Editor, under HKEY_LOCAL_MACHINE/SOFTWARE/EPA/ STORET/2.0, remove files DB_LOC, ORACLE_HOME, ORACLE_HOME_NAME, and ORACLE_HOME_NUM.

B-2.3 Uninstalling STORET v2.0 Database

Warning: After executing this procedure, your copy of the STORET v2.0 database cannot be recovered except through re-installation, which will reset all tables in the database to their "factory" condition. You **will lose** all changes you have made to STORET v2.0.

To Uninstall the STORET v2.0 Database, execute the following instructions:

1. If the STORET v2.0 database is running, stop the STORET v2.0 database by selecting Select Start\Programs\STORET Data Entry Module v2.0\Stop Database.
2. Search for the ORASTO2 folder. Delete the folder and all its contents. This folder should be under the STORET folder.
3. Search for the INITSTO2.ORA file and delete it. This file should be under a DATABASE folder, but any further directory structure may be variable.
4. Search for the PWDSTO2.ORA file and delete it. This file should be under a DATABASE folder, but any further directory structure may be variable.

B-2.4 Uninstalling Oracle 8i

See Chapter 8 extracted from the Oracle 8i Installation Guide provided on this CD in the Documents folder as a separate titled **Chap 8 from Oracle 8i Installation Guide.pdf**.

APPENDIX C - Oracle Home Setup

Oracle Home Setup

If a local Oracle 8i database has already been loaded on the computer, AND, no database currently exists, uninstall the Oracle 8i Personal Edition using the Start\Programs\Oracle Installation Products\Oracle Universal Installer. If unable to uninstall due to the current existence of a database, perform the following for proper home setup before beginning installation.

These steps will create a new Oracle Home and set the new home as the primary/default Oracle Home.

- C Create a new Oracle Home.
From the Start\Programs\Oracle Installation Products\Oracle Universal Installer, create the new Oracle Home. From the Oracle Universal Installer Welcome screen, press <Next>. Blank out the source path. Enter a new destination Oracle Home Name (e.g., orareports) and Path (e.g., c:\orarep). Press <Next>. An error message will appear indicating there is a problem accessing the staging area. This is because the source path is left blank. Press <OK>, followed by <Exit>.

- C Set the new home as the primary/default Oracle Home.
Set the new home as primary using the Start\Programs\Oracle Installation Products\Oracle Home Selector. (NOTE: WE SUGGEST CONTACTING THE STORET TECHNICAL SUPPORT BEFORE PERFORMING THIS STEP. EDIT REGISTRY ENTRIES WITH CAUTION) From the <Start> menu, choose <Run...>. Enter "regedit" and press <OK>. Expand the HKEY_LOCAL_MACHINE, Software, and ORACLE directories. You can modify the registry name by choosing <Edit> from the menu bar, and choosing <Modify>. You need to modify the Manually update the Default_Home registry entry found under HKEY_Local_Machine/ Software/Oracle/All_Homes to reflect the new home.

- C Reboot your system. Manual rebooting may not be necessary for Windows NT/2000.

- C Start/Restart the STORET Report Module v2.0 Installation process using the new Oracle Home.

Accessing STORET v1.2 once STORET v2.0 has been installed requires the default Oracle home to be reset accordingly using the Start\Programs\Oracle Installation Products\Oracle Home Selector.

APPENDIX D - STORET Report Module v2.0 Custom Installations

STORET Report Module v2.0 Custom Installation

If you do not want to upgrade your Oracle products (e.g., Oracle Forms and Reports Runtimes) and only want to install the STORET Report Module v2.0, then follow these instructions. It should be noted, however, that this is not the recommended installation, and failure to upgrade the Oracle products may cause the STORET Report Module v2.0 to work improperly.

In following instructions, you will bypass the installation provided on the STORET Report Module v2.0 (Disk 1) CD, and use the Oracle installer already existing on your computer to custom install the STORET Report Module only.

1. Insert the STORET Report Module v2.0 (Disk 1) CD into your computer.
2. On your computer, go to Start\Programs\Oracle for Windows 95 (for Windows 98 operating systems) or Oracle for Windows NT (for Windows NT/2000/XP operating systems), and open the Oracle Installer. If you already have Oracle products, you will have the Oracle Installer.
3. Press the <**From...**> button on the Oracle Asset Manager to browse for files on the STORET Report Module v2.0 (Disk 1) CD. On the root of the CD, open the Install folder.
4. The Oracle Installer will detect your operating system and provide you with a single choice of the file type *.PRD (i.e., win95.prd for Windows 98 or nt.prd for Windows NT/2000/XP). Highlight this file and press <**Open**>.
5. A list of components will appear in the Available Products window. Highlight only the STORET Report Module v2.0 and press <**Install**>.

Changing Drive Location

The STORET Report Module v2.0 will be installed on the C: drive of the computer. If the C: drive is unavailable, or a different drive is desired, follow the instruction below. They will lead you through the process of copying the installation CD, and manually editing a line in 2 files.

1. Copy the entire contents of the STORET Report Module v2.0 (Disk 1) to a temporary location on your computer. It should be copied to a new folder with no other existing files.

2. Looking in this copy of the files/folders, open the Install folder.
3. Remove the read-only property on the STRRPT.vrf file and open the file in the text editor of your choice (e.g., Notepad), and search for the string **storet_preset = "c:\STORET";**.
4. Replace the drive letter in this statement (i.e., c) with the drive letter of your choice, and save the file, overwriting it in its current location. Make no other changes to the file.
5. Remove the read-only property on the STRRPT.det file and open the file in the text editor of your choice (e.g., Notepad), and search for the string **storet_preset = "C:\STORET\STRRPT";**.
6. Replace the drive letter in this statement (i.e., C) with the drive letter of your choice, and save the file, overwriting it in its current location. Make no other changes to the file.
7. Run the setup.exe file found on the root of this new folder to install the STORET Report Module v2.0. Follow all instructions as previously noted in this document.

APPENDIX E - Pentium 4 Information

This Appendix replaces the remainder of Section **Installing Oracle 8i Personal Edition**.

Pentium 4 Assistance

If you have an Intel Pentium 4 Processor and the Oracle Universal Installer will not start, or you receive a jrew/java error message while attempting to install Oracle 8i Personal Edition, perform the following instructions:

1. Create a directory/folder on a drive with sufficient space (approximately 650 MB) to hold the Oracle 8i Personal Edition CD contents (e.g., C:\ORACLE_CD_TEMP).
2. Copy the entire Oracle 8i Personal Edition CD to this new directory
3. Rename all occurrences of the file symcjit.dll on your computer, including those under the new directory. Rename to symcjit.dl_.
4. Run the setup.exe found in the root of the new directory under install\win32\setup where you copied the Oracle 8i Personal Edition contents to perform the Oracle 8i Personal Edition installation.

*** STOP HERE if you are using Windows 98, and return to the installation instructions for Windows 98 to complete the Installation; if not using Windows 98, continue with the instructions below.

5. On the Welcome screen, press the <Next> button to proceed to the File Locations screen.
6. On the File Locations screen, type ORAHOME81 into the Destination field as the name of the Oracle Home. Type C:\oracle\ora81 as the path. Press the <Next> button to proceed to the Available Products screen.
7. On the Available Products screen, choose Oracle 8i Personal Edition. Press the <Next> button to proceed to the Installation Types screen.
8. On the Installation Types screen, choose the <Custom Install> option. Press the <Next> button to proceed to the next screen. The Installer will display a list of Available Product Components.

Modify this list as follows:

- C Deselect (uncheck) "Oracle HTTP Server 1.3...." (This is not used by STORET, and can cause the install process to fail).
- C Deselect (uncheck) "Oracle Product Options 8.1.7...." (This is not part of the Minimum Install, and is not used by STORET).
- C Deselect (uncheck) "Oracle Java Products 8.1.7...." (This is not part of the Minimum Install, and is not used by STORET).
- C Deselect (uncheck) "Oracle Enterprise Manager Products 8.1.7...." (This is not part of the Minimum Install, and is not used by STORET).

- C Select (check) "Oracle Universal Installer...." found under the Oracle Installation Products 8.1.7.... (The Oracle Installation Products 8.1.7.... should also remain checked as stated below.)

The following items are **SELECTED** by the Custom Install, and should remain **SELECTED**, and their defaults accepted:

- C Oracle 8i Server 8.1.7....
- C Net8 Products 8.1.7....
- C Oracle Utilities 8.1.7....
- C Oracle Configuration Assistants 8.1.7....
- C Development Tools 8.1.7....
- C Oracle Installation Products 8.1.7....

The following items are **NOT SELECTED** by the Custom Install, and should remain **NOT SELECTED**:

- C Oracle Migration Workbench 1.3....
- C Oracle Services for Microsoft Transaction Server 8.1.7....
- C Oracle Administration Assistant for Windows NT 8.1.7....
- C Oracle 8i Windows Documentation 8.1.7....

Press **<Next>** to proceed to the next screen.

9. Press **<Next>** when prompted for a destination on where to install the selected Oracle products (e.g., Component Locations).

10. If the Upgrade or Migrate an Existing Database screen appears, **DO NOT** choose any options. Press the <Next> button to proceed to the Create Database/Select Starter Database screen.
11. When prompted to create a new or starter database, choose <No>. Press the <Next> button to proceed to the Summary screen.
12. On the Summary screen, you will see the summary of your selections. Press the <Install> button to start the installation.
13. On the Net8 Configuration screen, choose <Perform Typical Configuration> option. Press the <Next> button to proceed.
14. Press the <Exit> button to exit the installation, and confirm <Yes> that you really want to exit. Note that the previously mentioned jrew/java error message associated with a Pentium 4 may appear at the end of the installation. This error message should be ignored.
15. By going to the Control Panel\Administrative Tools\Services, set the Oracle ORAHOME81 TNSListener service to Automatic, if this service is present. Note that the path may be Control Panel\Services without the Administrative Tools on some platforms such as Windows NT. The path may be Control Panel\Performance and Maintenance\Administrative Tools\Services on Windows XP.
16. You may close all Windows when finished.
17. After all STORET installations are finished, rename all symcjit.dl_ files back to the original name (i.e., symcjit.dll).
18. Remove the temporary directory and its contents to reclaim your hard disk space.

Note: Refer to the Oracle web site, <http://www.oracle.com>, for further information regarding the Oracle 8i Personal Edition Installer and the Java issues with the HTTP Server product.
19. Follow the instructions under section “STORET Data Entry Module and STORET Database” to install the Data Entry Module and STORET Database.

Appendix F - Manual Installation of STORET Database with Personal Oracle 8.1.7

If Oracle 8i Personal Edition is present on your computer and the Standalone Installation option is not available, slight configuration modifications may be necessary to activate the option.

Verify and/or perform the following before performing the manual installation:

- C Use the Oracle Installation Products\Home Selector to verify and/or set ORAHOME81 as the primary home.
- C Type "PATH" at a DOS Prompt and verify that the ORAHOME81 home location with the *bin* directory (e.g., c:\oracle\ora81\bin) is the first entry in the path. This is the same location entered when installing Oracle 8i Personal Edition. If this path entry is not first, modify the path as follows:
 - Windows 2000\XP – Go to Control Panel\System. Select the Advanced tab and press <**Environmental Variables**>. Edit the "Path" variable in the System Variable list. Add the location entered when installing Oracle 8i Personal Edition with the *bin* directory (e.g., c:\oracle\ora81\bin) as the first path entry. You may remove other identical entries occurring elsewhere in the path, although this is not required.
 - Windows 98 – Edit the autoexec.bat file found on the root of the operating system drive (e.g., c:\autoexec.bat). Add the location entered when installing Oracle 8i Personal Edition with the *bin* directory (e.g., c:\oracle\ora81\bin) as the first path entry. You may remove other identical entries occurring elsewhere in the path, although this is not required. Reboot the computer.

Try installation of the STORET Data Entry Module and STORET Database. If the Standalone option is still not available, perform a manual installation of the STORET Database as described below.

1. Insert STORET Data Entry Module (Disk 2), open \DBA\V20Database folder, and copy "storet" folder to the root of the hard drive (e.g., c:\). If there is a message about replacing any existing files press <**Yes to All**>. This copies the files for creating the STORET database.

The values provided are for default installations. References to c:\ drive and other parameters should be substituted for the appropriate value in these instructions and in scripts accordingly.

2. Run c:\storet\storet-x\sto2\oraentry.reg to add entries to the registry.

3. Create the STORET Database.

```
C    Windows 2000 or XP -    Run c:\storet\storet-x\sto2\makedbnt.bat.  
C    Windows 98           -    Run c:\storet\storet-x\sto2\makedb.bat.
```

This will open up a DOS window and start creating the STORET database and may take at least two hours. Once the database is created, the DOS window will close.

4. Open the c:\storet\storet-x\sto2\listener.ora file in a text editor. Highlight the contents (i.e., all the text), copy the contents, and paste it to the bottom of the following file:

```
C    c:\oracle\ora81\network\admin\listener.ora.
```

Save and close the amended file.

5. Open the c:\storet\storet-x\sto2\tnsnames.ora file in a text editor. Highlight the contents (i.e., all the text), copy the contents, and paste it to the bottom of the following files:

```
C    c:\oracle\ora81\network\admin\tnsnames.ora.  
C    c:\orant\net80\admin\tnsnames.ora.
```

Save and close the amended files.

6. Go to control panel/administrative tools/services and stop and start the “OracleORAHOME81TNSListener” by right-clicking for options or double-clicking to open the properties screen. You may close these screens when finished.
7. Create shortcuts for startup_sto2.bat and shutdown_sto2.bat to appropriate locations (eg. desktop). These files are located in c:\storet\storet-x\sto2.
8. Run c:\storet\storet-x\sto2\stor20db.reg.
9. You may test the STORET Database for connectivity. Run startup_sto2.bat from the new shortcut to start the database. Login to the Report Module available as a Program item. If the login succeeds without receiving an error message, database connectivity for the Report Module has been established. Login to a SQL Plus session available as a Program item under Oracle ORAHOME81\Application Development\SQL Plus. If the login succeeds without receiving an error message, database connectivity for SQL Plus and the Data Entry Module has been established.

If the SQL Plus session fails to connect with a “TNS: could not resolve service name” message it may be due to an incomplete database name evaluated by the Oracle Authentication Services. To provide a complete database name, open the c:\oracle\ora81\network\admin\sqlnet.ora file. Highlight and copy the *value* of the NAMES.DEFAULT_DOMAIN (e.g., NAMES.DEFAULT_DOMAIN = *value*). Open the c:\oracle\ora81\network\admin\tnsnames.ora file and paste the *value* preceded by a period to the end of the STORET Database name.

Example:

```
STORET.value =  
(DESCRIPTION =  
  (ADDRESS_LIST=(ADDRESS = (PROTOCOL = TCP)(HOST = 127.0.0.1)(PORT = 1521)))  
  (CONNECT_DATA = (SERVICE_NAME = STORET)))
```

Save the file and try the SQL Plus connection again.

10. Installation of the STORET Database is now complete. To install the Data Entry Module interface, perform the installation as described in Section 4 for Client-Server installation under the section titled “Installing the STORET Data Entry Module”. NOTE: You may ignore the setup for a “SQL*Net connection by creating a new entry in the TNSNAMES.ora file” as this action has already been completed by the manual database installation.

