

Appendix B PHOTOGRAPH LOG

**City of Mesa, AZ - Municipal Separate Storm Sewer System (MS4)
(Permit No. AZS000004) Photograph Log**
Evaluated by: Scott Coulson (PG Environmental, LLC)



Photograph 1: Mountain View Village Center
Drainage channel conveys flow into the northeast side of the site, where a silt fence BMP had been improperly implemented in an area of concentrated flow



Photograph 2: Mountain View Village Center
View of drainage channel leading west across the site and earthen check berms installed along this course

City of Mesa, AZ - Municipal Separate Storm Sewer System (MS4)
(Permit No. AZS000004) Photograph Log
Evaluated by: Scott Coulson (PG Environmental, LLC)



Photograph 3: Mountain View Village Center
Earthen check berm consisting of unconsolidated fill had been placed within the drainage channel and was compromised by a recent flow event



Photograph 4: Mountain View Village Center
Lack of temporary ESC between the large expanse of disturbed construction site area and the flowing drainage channel

**City of Mesa, AZ - Municipal Separate Storm Sewer System (MS4)
(Permit No. AZS000004) Photograph Log**
Evaluated by: Scott Coulson (PG Environmental, LLC)



Photograph 5: Mountain View Village Center
Lack of temporary ESC between the large expanse of disturbed construction site area and the flowing drainage channel



Photograph 6: Mountain View Village Center
Collapsed silt fence BMP installed within the concentrated flow of the drainage channel prior to exiting the site

**City of Mesa, AZ - Municipal Separate Storm Sewer System (MS4)
(Permit No. AZS000004) Photograph Log**
Evaluated by: Scott Coulson (PG Environmental, LLC)



Photograph 7: Mountain View Village Center
Sediment and debris were observed in the drainage channel
above the flow control structure

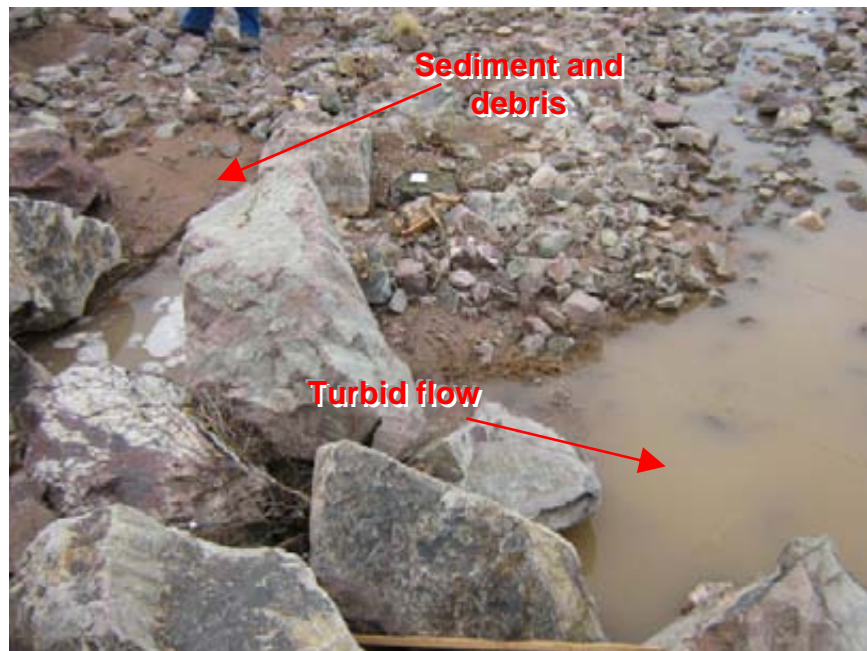


Photograph 8: Mountain View Village Center
Close-up view of area shown in Photograph 7 depicting sediment deposition
directly downstream of the failed silt fence shown in Photograph 6

**City of Mesa, AZ - Municipal Separate Storm Sewer System (MS4)
(Permit No. AZS000004) Photograph Log**
Evaluated by: Scott Coulson (PG Environmental, LLC)



Photograph 9: Mountain View Village Center
View of sediment deposition on the opposite side of the failed silt fence shown in Photograph 6



Photograph 10: Mountain View Village Center
Sediment, debris, and turbid flow were observed in the drainage channel below the flow control structure shown in Photograph 9

**City of Mesa, AZ - Municipal Separate Storm Sewer System (MS4)
(Permit No. AZS000004) Photograph Log**
Evaluated by: Scott Coulson (PG Environmental, LLC)

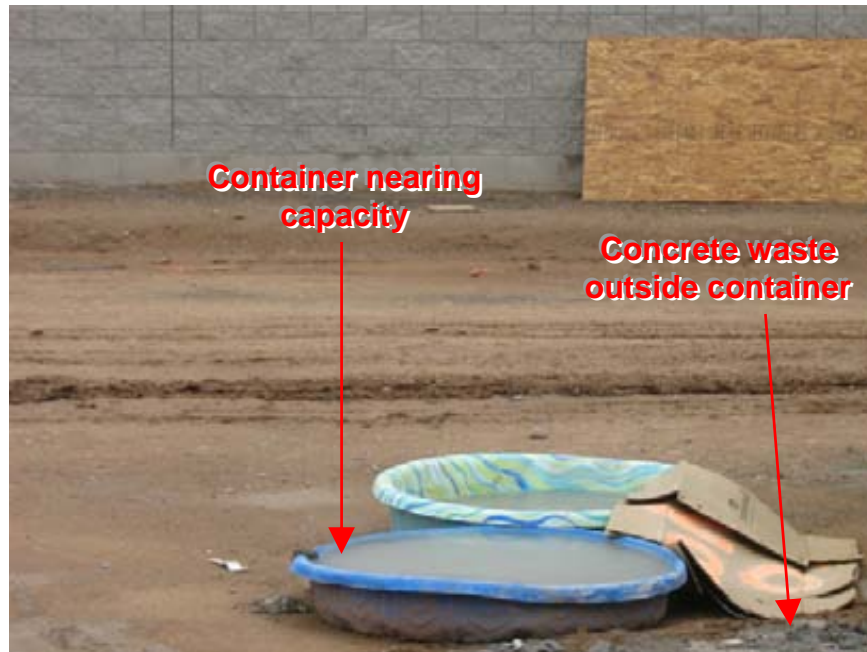


Photograph 11: Superstition Springs Commerce Center
View showing proximity of site to the ADOT Channel and lack of BMPs



Photograph 12: Superstition Springs Commerce Center
BMPs were not implemented as perimeter control along Hampton Avenue, between the disturbed area and the offsite curb and gutter flowline

**City of Mesa, AZ - Municipal Separate Storm Sewer System (MS4)
(Permit No. AZS000004) Photograph Log**
Evaluated by: Scott Coulson (PG Environmental, LLC)



Photograph 13: Superstition Springs Commerce Center
Concrete waste was observed outside the containers and one of the two containers was nearing capacity



Photograph 14: Mesa Municipal Court
General view of southern portion of construction site area looking east

**City of Mesa, AZ - Municipal Separate Storm Sewer System (MS4)
(Permit No. AZS000004) Photograph Log**
Evaluated by: Scott Coulson (PG Environmental, LLC)



Photograph 15: Mesa Municipal Court
Straw wattles were installed on an impervious surface, and therefore were not properly entrenched or anchored to create an adequate seal



Photograph 16: Mesa Municipal Court
Sections of the silt fence along the southern perimeter were not maintained with adequate entrenchment

**City of Mesa, AZ - Municipal Separate Storm Sewer System (MS4)
(Permit No. AZS000004) Photograph Log**
Evaluated by: Scott Coulson (PG Environmental, LLC)

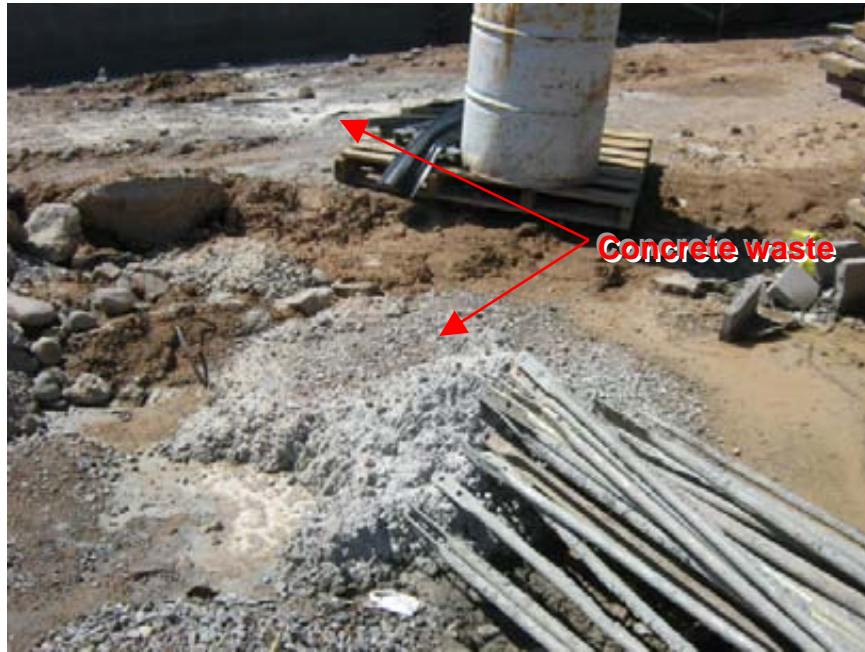


Photograph 17: Mesa Municipal Court
Concrete waste and washout hose located near mixer



Photograph 18: Mesa Municipal Court
Close-up view of concrete waste shown in background of Photograph 17

**City of Mesa, AZ - Municipal Separate Storm Sewer System (MS4)
(Permit No. AZS000004) Photograph Log**
Evaluated by: Scott Coulson (PG Environmental, LLC)



Photograph 19: Mesa Municipal Court
View of uncontrolled concrete waste