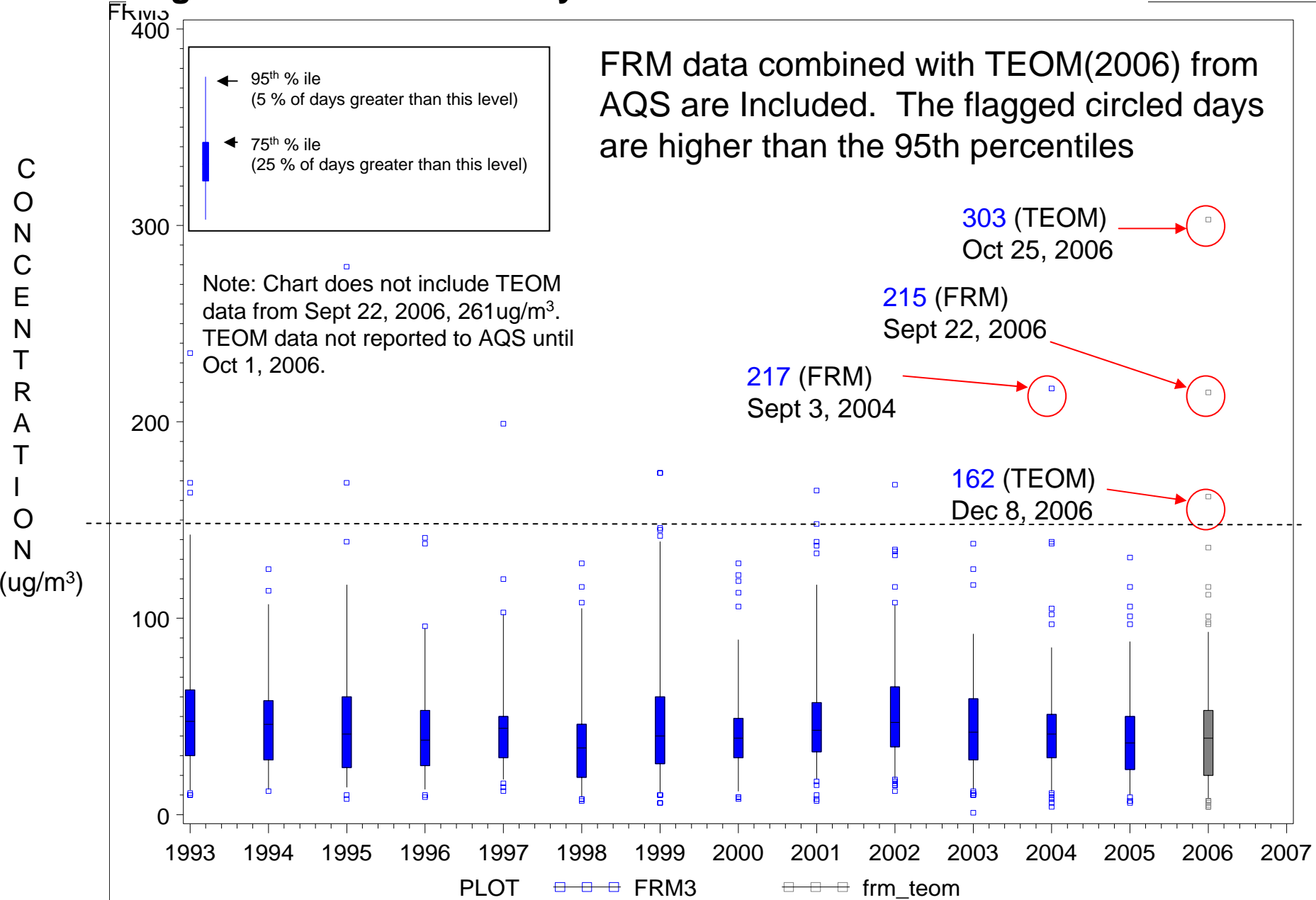


Figure 7. Annual Peak Day PM10 Concentrations at Corcoran



March 6, 2008, Source: EPA Air Quality System (AQS) Database

Figure 8. Annual Peak Day PM10 Concentrations at Bakersfield

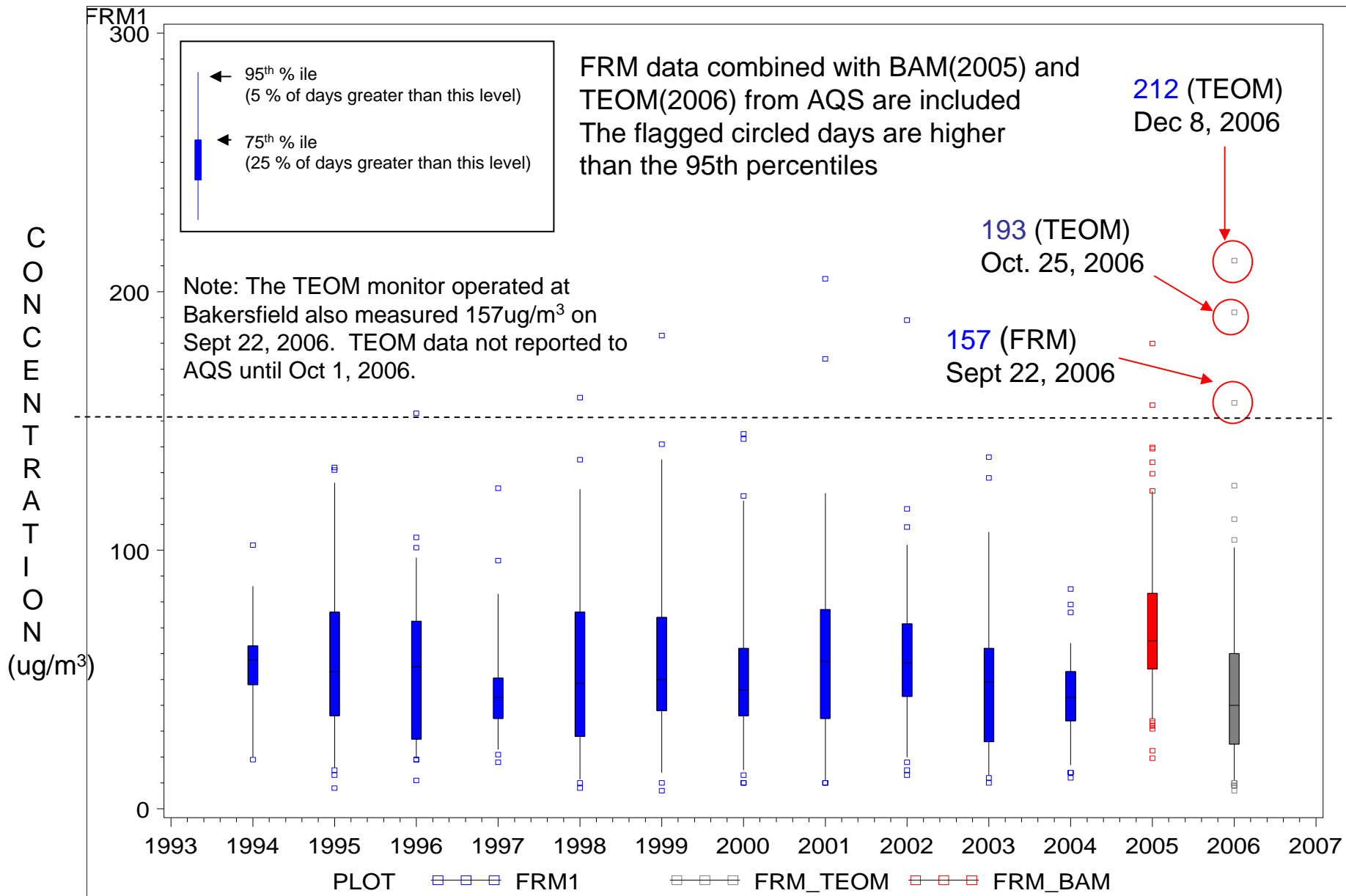
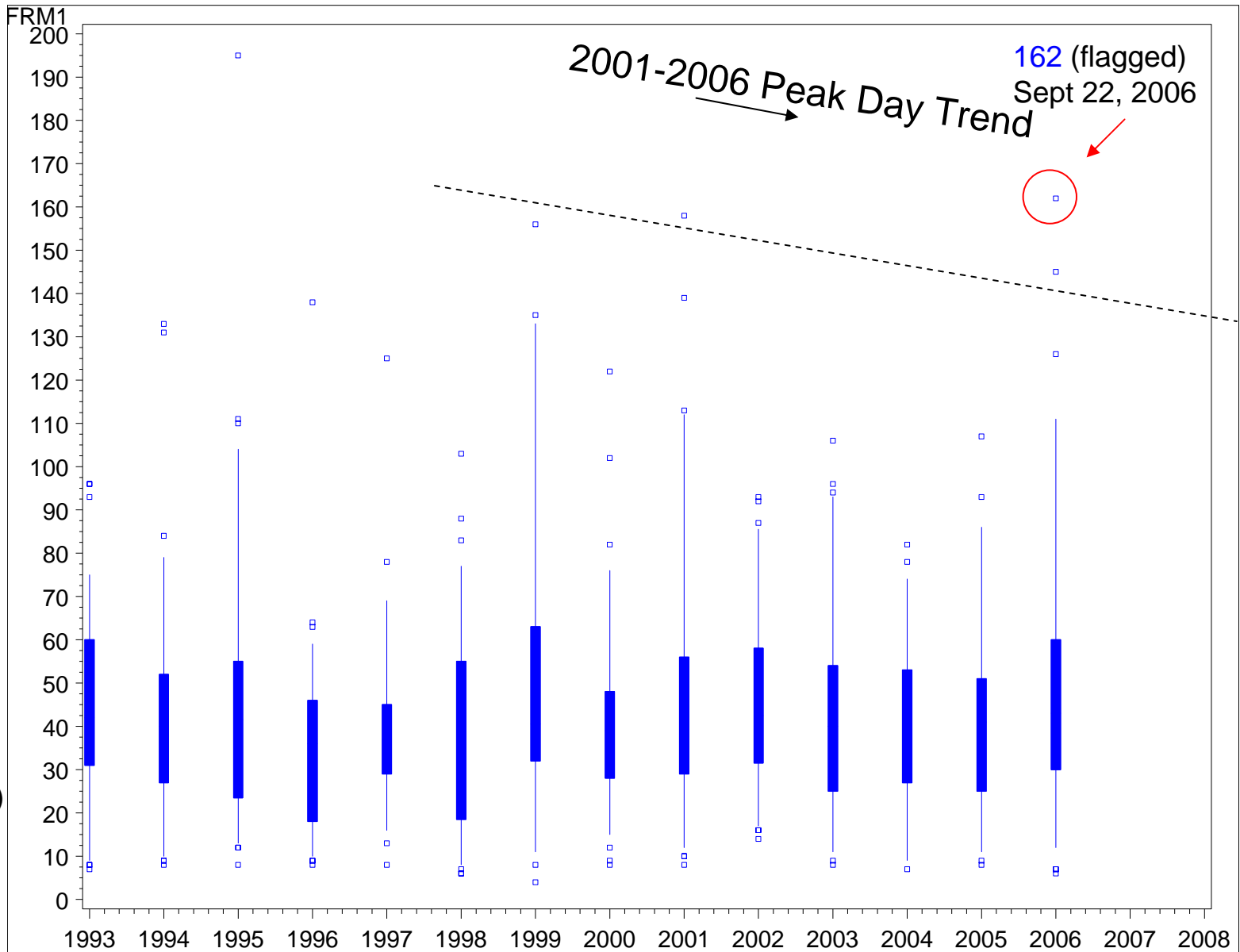


Figure 9. Annual Peak Day PM10 Concentrations at Oildale

95th % ile
(5 % of days
greater than
this level)

75th % ile
(25 % of days
greater than
this level)

C
O
N
C
E
N
T
R
A
T
I
O
N
($\mu\text{g}/\text{m}^3$)



**Figure 10. Annual Peak Fall Day PM10 Concentrations at Corcoran
(September, October, November Data Only)**

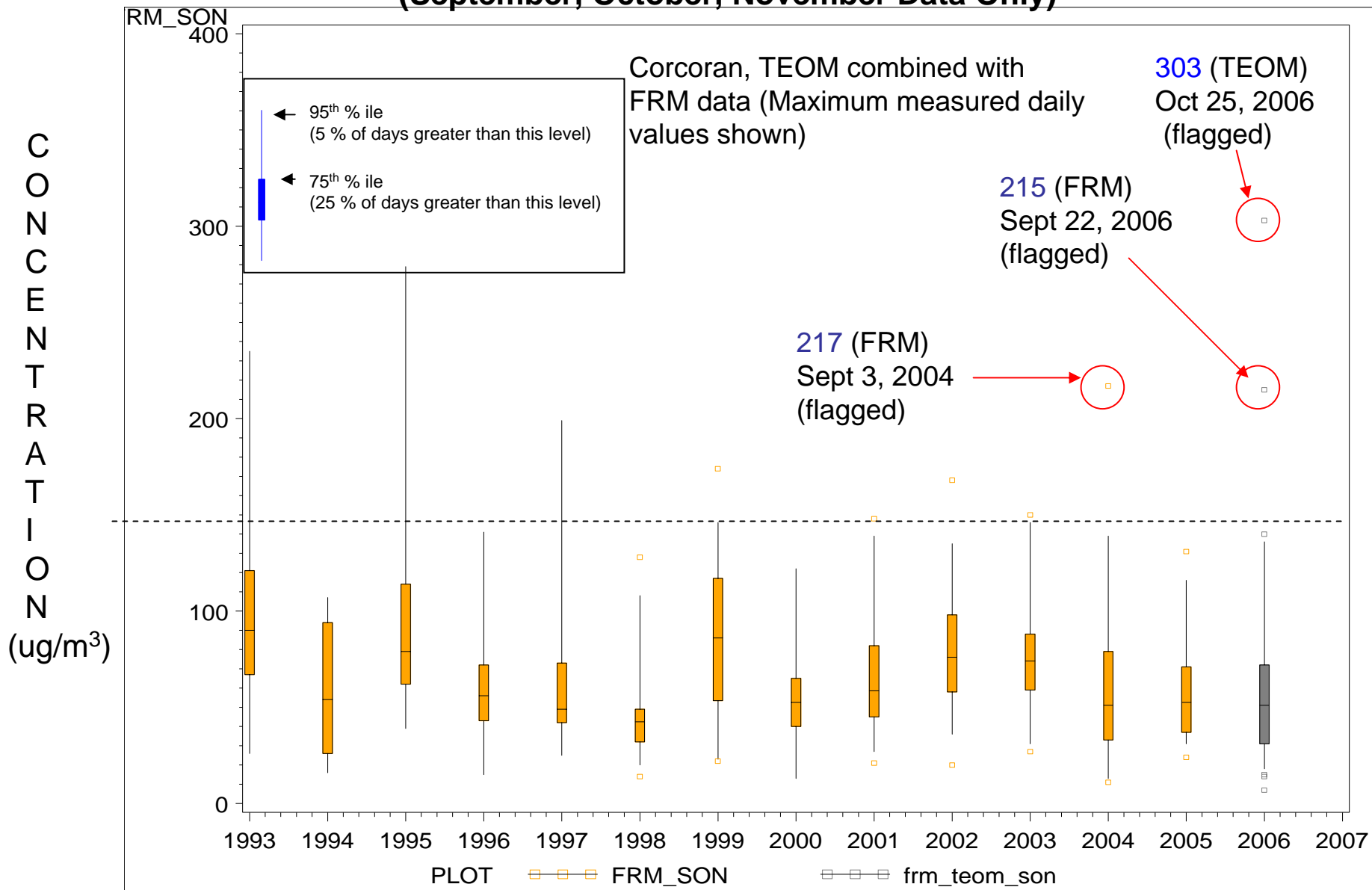


Figure 11. Annual Peak Fall Day PM10 Concentrations at Bakersfield (September, October, November Data Only)

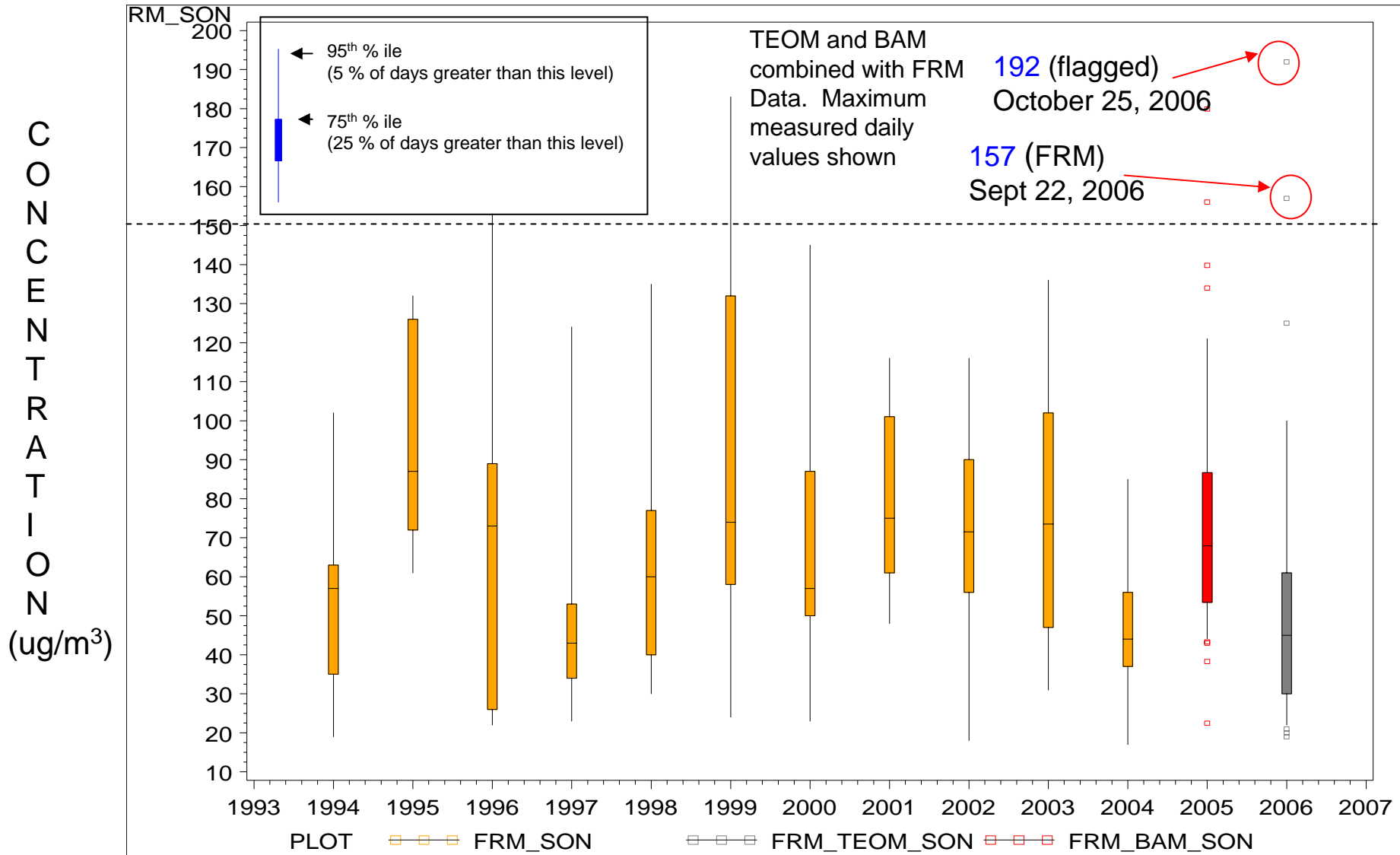
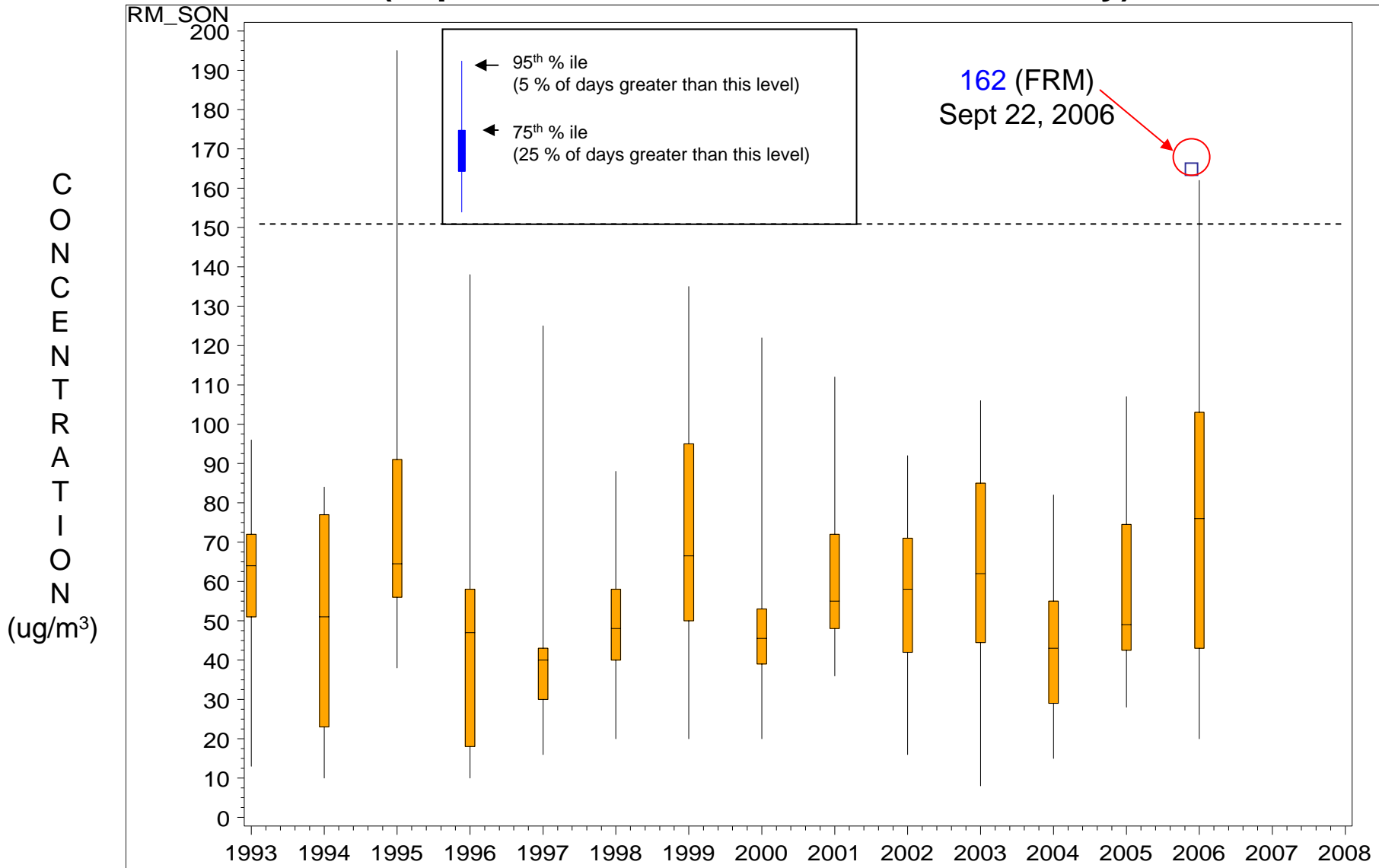


Figure 12. Annual Peak Fall Day PM10 Concentrations at Oildale (September, October, November Data Only)



March 6, 2008, Source: EPA Air Quality System (AQS) Database