

Village of
Los Ranchos de Albuquerque

SETTLED C. 1661 ... INCORPORATED 1958

MAYOR
LARRY P. ABRAHAM
ADMINISTRATOR
JUAN R. VIGIL

TRUSTEES
DON LOPEZ
MAYOR PRO-TEM

PABLO RAEL
MARY HOMAN
TIM McDONOUGH

May 14, 2007

U.S. EPA Region 6
Water Quality Protection Division (6WQ-NP)
Attn: Diane Smith
1445 Ross Avenue
Suite 1200
Dallas, TX 75207

RE: Status update for SMWP NOI for Village of Los Ranchos de Albuquerque, New Mexico SM4.

Dear **Ms.** Smith.

This letter is to provide a status update concerning the remaining information necessary for the Village of Los Ranchos' NOI submittal.

The Village has contracted with C. H. Guernsey and Company to perform a Biological Analysis to comply with Section 1.5 Endangered Species Act Eligibility Provision. C. H. Guernsey and Company is the company Bernalillo County, New Mexico has contracted with for their B.A. and the Village assessment should be complete about the same time or shortly after Bernalillo County's assessment is complete.

The **Board** of Trustees of the Village will not be meeting in June, therefore the Storm Water Management Ordinance, originally scheduled for adoption in July can not be adopted until August. The proposed ordinance will be available for public review and comment from June 8, 2007 until adoption on August 8, 2007.

All other section requirements are in place and operational.

Should you have questions, instructions or comments please contact me at (505)344-6582, FAX (505)344-8978 or e-mail L.L.Sc.,bwh@vill.com.

Sincerely,



Linda Seebach
Planning and Zoning Assistant



Village of
Los Ranchos de Albuquerque

SETTLED C. 1661 ... INCORPORATED 1958

MAYOR
LARRY P. ABRAHAM
ADMINISTRATOR
JUAN R. VIGIL

TRUSTEES
DON LOPEZ
MAYOR PRO TEM

PABLO RAEL
MARY HOMAN
TIM McDONOUGH

August 1, 2007

Denise Hamilton
EPA, Region 6
Water Quality Protection Division
NPDES Permits and technical Section, 6WQ-PP
1445 Ross Avenue, Suite 1200
Dallas, Texas 75202-2733

RE: Village of Los Ranchos de Albuquerque, NM Phase II Permit

Dear Ms. Hamilton,

Enclosed you will find the submission from the Village of Los Ranchos which should complete our application for the Phase II Storm Water General Permit.

The Village has updated our Storm Water Management Plan from that submitted April 1, and the revised version is enclosed.

If you have any questions, or need something else, please just let me know. (505-344-6582) or linda@villageoflosranchos.com.

Sincerely,

Linda Seebach
Stormwater Management Administrator
Planning and Zoning Assistant

VILLAGE OF LOS RANCHOS DE ALBUQUERQUE
STORMWATER MANAGEMENT PROGRAM
REVISED AUGUST 1, 2007

National Pollutant Discharge Elimination System
General Permit for Discharges from Small Municipal Separate Storm Sewer Systems

3.1 Notice of Intent

- 3.2.1. Village of Los Ranchos de Albuquerque, New Mexico
NMR040000 State of New Mexico, except Indian Country Lands
Urbanized area: Albuquerque, New Mexico
Core area: Albuquerque, New Mexico
- 3.2.2. Village of Los Ranchos de Albuquerque
6718 Rio Grande Blvd. NW
Los Ranchos de Albuquerque, NM 87107
(505) 344-6582
- 3.2.3. Linda Seebach, Planning and Zoning Assistant or Terence
Nighbert, Director Planning and Zoning (505) 344-6582
e-mail LLSeebach@villjr.com
- 3.2.4. Location map attached.(attachment 1)
- 3.2.5. The Village has 4.5 square miles.
- 3.2.6. Approximate Latitude 35 degrees, 10 minutes and Longitude 106
degrees, 40 minutes
- 3.2.7. Receiving Waters of the US — Middle Rio Grande — Sub segments
20.6.4.105 and 20.6.4.106
- 3.2.8. Not applicable
- 3.2.9. **PUBLIC EDUCATION AND OUTREACH ON STORMWATER IMPACTS**
- 3.2.9.1. Best Management Practice (BMP) Publish stormwater quality
information in Village newsletter and on Village web page.
- 3.2.9.1. Best Management Practice (BMP): Incorporate information
regarding stormwater quality on the Village web page and Village newsletter

Implementation Schedule: Initial publication no later than

February 1, 2007 and at an average interval of not less than 6 months thereafter.

Measurable Goal: Publication of stormwater quality data in newsletter and/or web page at least twice each year.

3.2.9.2. PUBLIC INVOLVEMENT AND PARTICIPATION

3.2.9.2. Best Management Practice (BMP): Two public meetings were conducted, February 7, 2007, and March 7, 2007, to present the Phase II requirements and the Village proposed Plan. These were advertised in the newspaper, Village Newsletter and on the Village Web Page and posted on community bulletin boards. The advertisements exceeded legal requirements.

Implementation Schedule: Complete.

Measurable Goal for BMP: Complete.

3.2.9.3. ILLICIT DISCHARGE DETECTION AND ELIMINATION

3.2.9.3. Best Management Practice (BMP): Replace existing on-site septic systems with a sanitary sewer collection system discharging to the City wastewater plant. This program is being implemented by the City of Albuquerque with approximately 60% of the Village completed. The current schedule, under the City's control, is to provide sanitary sewer service to the entire Village by 2012.

Implementation Schedule: Area I, Area J and Area K completion schedule

Measurable Goals: Number of hook-ups to sewer system.

3.2.9.3. Best Management Practice (BMP): Inspect drains for dry weather flows. Trace any identified outfalls to source and determine if illicit. If Illicit, rectify.

Tracing sources of illicit discharge: Due to the nature of the Village MS4, source tracing will involve local tracking of the flow or other pollutant, typically expected to be within a few hundred feet. This is not expected to be a significant problem.

Implementation Schedule: Monthly during dry weather season (mid winter).

Measurable Goal for BMP: Inspect drains monthly.

3.2.9.3. Best Management Practice (BMP) Review and, if required, modify existing animal ordinances to minimize animal waste discharge to the drains. The

Village Animal Control Officer will monitor and enforce compliance. Public education will be through the Village Newsletter.

Implementation Schedule: Review within first year, if required, modify within second year.

Measurable Goal for BMP: Review complete. Program in Place

- 3.2.9.3.** Best Management Practice (BMP) Village Code Enforcement Officer to monitor illicit discharge.

Implementation Schedule: Village is currently hiring new Code Enforcement Officer (3 months)

Measurable Goal: Hire and train Code Enforcement Officer in illicit discharge detection and monitoring and inspection.

3.2.9.4. CONSTRUCTION SITE STORM WATER RUNOFF CONTROL

- 3.2.9.4.** Best Management Practice (BMP): Require all builders/ developers disturbing 1 acre or more to provide a copy of their SWPPP and a post-construction on-site water retention plan prior to issuance of their Village permit.

Implementation Schedule: In place

Measurable Goal: All plans involving disturbance of 1 acre or subdivision of more than 1 acre submitted with SWPPP.

- 3.2.9.4.** Best Management Practice (BMP): Provide training for plan review, construction inspection and construction observation for all appropriate personnel within one year of assumption of these duties.

Implementation Schedule: Currently on-going.

Measurable Goal: Number of reviews checked for NOI and SWPPP.

3.2.9.5. POST-CONSTRUCTION STORM WATER MANAGEMENT IN NEW DEVELOPMENT AND REDEVELOPMENT.

- 3.2.9.5.** Best Management Practice (BMP): Each builder or developer must provide an on-site water retention plan which may utilize any one of a number of measures, berms, ponding areas, underground storage/holding tanks.

Implementation Schedule: In place

Measurable Goal: Number of on-site water retention plans submitted

- 3.2.9.5. Best management Practice (BMP) Sanctions and enforcement mechanisms, Ordinance and coordinate with Bernalillo County.

Implementation Schedule: Adopt Ordinance 211 by August 8, 2007

Measurable Goal: Number of violations for failure to retain storm water on-site.

3.2.9.6. **POLLUTION PREVENTION/GOOD HOUSEKEEPING FOR MUNICIPAL OPERATORS**

- 3.2.9.6. Best Management Practices (BMP) Schedule road maintenance and storm drainage maintenance. Recycle hazardous materials in the shop, as well as maintaining the shop in an environmentally sound manner.

Implementation Schedule: Maintenance scheduled, Inspections and check list for shop maintenance in place.

Measurable Goal: Number of times per year road and storm drains are maintained. Number of inspections and check list review for shop.

- 3.2.9.6. Best Management Practice (BMP): Develop and implement training material based on the Storm Water Management Fact Sheet, EPA 832-F-99-010 and any future training guidance that EPA publishes.

Implementation Schedule: Review complete within first year. Update, if required each year thereafter.

Measurable Goals: Number of personnel trained.

3.2.10 **Endangered Species Act (ESA) Eligibility Provisions**

- 3.2.10.1. Endangered Species Listing. Endangered species for Bernalillo County, as listed in the EPA NPDES website by common name, are:

1. Fish — Rio Grande Silvery Minnow
2. Bird — Mountain Plover, Southwestern Willow Flycatcher, Bald Eagle, Mexican Spotted Owl
3. Mammal — Black-Footed Ferret

- 3.2.10.1. The Village MS4 does not propose significant changes to existing and historic drainage patterns. The proposed operation of the Village MS4 does not significantly contribute to the runoff entering the Rio Grande. The one outfall site flows into the Alameda Main Canal, maintained and operated by the Middle Rio Grande Conservancy District (M.R.G.C.D.).

Biological Assessment completed by C.H. Guernsey and Company, 2501 San Pedro Drive NE, Suite 211, Albuquerque, NM 87110, submitted August, 2007.

3.2.11. PROVISIONS TO ADDRESS CONSIDERATIONS OF THE NATIONAL HISTORIC PRESERVATION ACT

3.2.11.1 The 4th Street Project is the only significant change to the historical drainage patterns of the Village of Los Ranchos. Attached is the FONSI with the State Historical Preservation Office sign-off for the 4th Street Project. (ATTACHMENT 2)

3.2.73. PROVISIONS TO ADDRESS CONSIDERATION OF THE TOTAL MAXIMUM DAILY LOAD FOR FECAL COLIFORMS IN THE MIDDLE RIO GRANDE

3.2.13.1. The Middle Rio Grande is listed as a Clean Water Act Section 303(d) impaired waters. (Middle Rio Grande Total Maximum Daily Load (TMDL) For Fecal Coliform, NMED, May 2002). A TMDL implementation plan or allocation plan has not been established for the Middle Rio Grande. (ATTACHMENT 3)

3.2.13.1. Stormwater runoff from the Village does not enter the Middle Rio Grande. The irrigation canal (acequia) banks are higher than the adjacent land, including the Village storm sewer system. No agricultural land is within the drainage basin of the storm sewer system. Most likely contamination would come from small (dog/cat) domestic animals. Consequently, significant fecal coliform pollutants from the Village MS4 are not probable.

3.2.13.1. Best management practices (BMPs): Public education for pet owners and land owners concerning fecal coliform contamination.

3.2.13.1. BMP: potential sources of fecal coliform bacteria within the Village storm sewer system area are addressed by:
Domestic animal waste reduction program.
Dry weather screening.

3.2.13.1. BMP: Ordinance 211, adopted August 8, 2007, prohibits landowners from burying animal waste, dead animals, garbage or toxic chemicals.

5.2 Minimum control measures

5.2.1 Public Education and Outreach on Storm Water Impacts

5.2.f.1 Implement a public education program to distribute educational materials to the community or conduct equivalent outreach activities about the impact of storm water discharges on water bodies and the steps that the public can take to reduce pollutants in storm water runoff.

- 5.2.1.2. 1. *The Village of Los Ranchos (the Village) will conduct an educational outreach program to the general public regarding the impact of storm wafer discharges and mitigation factors via appropriate media, the Village Vision (articles) and the Village Web Site. Specific audiences, such as restaurant owners and contractors will be advised of their impact on storm water.*

The Village's only storm drain will be marked to indicate that it drains to waterways.

The Village will also make available "household hazardous waste wheels" provided by Bernalillo County that provide information on reducing the use of hazardous materials in the home and a reminder that this reduction also impacts storm wafer. These wheels will be distributed during the household hazardous waste quarterly collection events sponsored by Bernalillo County and the city of Albuquerque and available at their hazardous waste collection center.

2. – 4. *The Village Vision is sent to every resident and business within the Village of Los Ranchos, a circulation of 2155. The Village issues approximately 100 building permits each year. Contractors are required to submit a copy of their SWPPP and post construction on-site water retention plan.*
3. *Targeted audiences and target pollutants and sources include restaurants which are required to install grease traps. This target audience will be advised during the building or licensing process of how wastes (grease and oil) impact storm wafer.*
5. *Measurement of goal achievement will be in terms of number of articles published during permit process, code enforcement cases, number of website visitors, number of restaurants complying and number of contractors complying with SWPPP and post construction on-site water retention.*
6. *Implementation Schedule: Review complete within first year Update, if required each year thereafter. Yearly statistical analysis and report.*
7. *The Planning and Zoning Department will be responsible for implementing and coordinating the education activities.*

5.2.2. Public Involvement/Participation

- 5.2.2.1. **Develop and implement a plan to encourage public involvement and participation in the development and implementation of the SWMP.**

Best Management Practice (BMP): Two public meetings were conducted, February 7, 2007, and March 7, 2007, to present the SWMP requirements and the Village proposed Plan. These were advertised in the newspaper, Village Newsletter and on the Village Web Page, and posted on community bulletin boards. The advertisements exceeded legal requirements.

- 5.2.2.2. Develop and implement a process by which public comments to the plan are received and reviewed by the persons(s) responsible for the SWMP.

The public was invited to be involved in the development and submittal of the Village NOI and SWMP through Public Meetings and written articles. Data from the public meetings and other public comment are incorporated in this SWMP

- 5.2.2.3. Make the SWMP and NOI available to the public and to the operator of any MS4 or Tribal authority receiving discharges from the small MS4

- 5.2.2.4. 1. *During the development process, the Village published articles in the Village Vision inviting citizen participation, posted information on the Village Website, hosted public meetings, published notice of the meetings in the local newspaper and on community bulletin boards.*
2. *During development of the SWMP, citizens from the Village of Los Ranchos were invited to attend public meetings and offer suggestions for the SWMP.*

The public may continue to submit information, identify issues and concerns and ask questions. If there are complaints about a property, the Village Code Enforcement Officer investigates the complaints. The Village Planning and Zoning Commission and the Board of Trustees are also part of the review process, and the public has an opportunity to comment during these public meetings. The Village requires signs and public notice for requests for variances or other changes.

Once the permit application is submitted, we will continue to conduct outreach and educational sessions about storm wafer with neighborhood associations, public interest groups and contractors.

Contractors will be involved during the permitting process. Specific audiences, such as restaurant owners, will be advised of how grease and oil impact storm wafer.

3. *At the meetings notes were made of citizen input concerning the SWMP.*

The Website includes the e-mail address for Planning and Zoning contact personnel.

4. *Websife linking information is also posted on the web for:
<http://www.epa.gov/npdes>
<http://www.bernco.gov/npdes>*
5. *Statistics are kept on the number of responses from the public by the Planning and Zoning Department staff, the number of infractions and the number of contractors with SWPPP and post-construction on-site wafer retention.*
6. *Implementation Schedule: Review complete within first year. Update, if required each year thereafter. Over the five year permitting process, annual reports will be submitted.*
7. *The Planning and Zoning Department will be responsible for implementing and coordinating the public involvement/participation activities.*
8. *Citizen input was minimal for the submission of the NOI*

5.2.3. Illicit Discharge Detection and Elimination.

- 5.2.3.1. Develop, implement, and enforce a program to detect and eliminate illicit discharges into the small MS4.

*Best Management Pracfice (BMP): Replace existing on-site septic systems with a sanitary sewer collection system discharging to the **City** wastewater plant. This program is being implemented by the City of Albuquerque with approximately 90% of the Village completed. The current schedule, under the City's control, is to provide sanitary sewer service to the entire Village by 2008.*

Best Management Practice (BMP): Inspect Drains for dry weather flows. Trace any identified outfalls to source and determine if illicit. If Illicit, rectify.

*Tracing sources of illicit discharge: Due to the nature of the Village **MS4**, source tracing will involve local tracking of the flow or other pollutant, typically expected to be within a few hundred feet. This is not expected to be a significant problem.*

Best Management Practice (BMP) Review and, if required, modify existing animal ordinances to minimize animal waste discharge to the drains. The Village Animal Confroi Officer will monitor and enforce compliance. Public education will be through the Village Newsletter.

Best Management Practice (BMP) Train Village personnel for "spotting" illicit discharge.

- 5.2.3.2.** Develop, if not already completed, a storm sewer system map, showing the location of all outfalls and the names and location of all waters of the United States that receive discharges from those outfalls.

Storm Sewer Map Development: The Village has maps showing the 4th Street Project and outfall. These maps are included with the SWMP.(ATTACHMENT 4)

- 5.2.3.3.** To the extent allowable under State, Tribal or local law, effectively prohibit through ordinance or other regulatory mechanism, non-storm water discharges into the storm sewer system and implement appropriate enforcement procedures and actions (including enforcement escalation procedures for recalcitrant or repeat offenders);

Ordinance 211 to be adopted by Village Board of Trustees August 8, 2007.

- 5.2.3.4.** Develop and implement a plan to detect, identify the source of, and address non-storm water discharges, including illegal dumping, to the system.

Through the public education program, voluntary reporting of incidents of illegal discharge and illegal dumping will be sought. Additionally, Village personnel will be trained to spot illegal discharges and illegal dumping.

- 5.2.3.5.** Inform public employees, businesses, and the general public of hazards associated with illegal discharges and improper disposal of waste;

Best Management Practice (BMP) present articles in the Village Vision and the Village Website, as well as coordinating with Bernalillo County.

- 5.2.3.6.** Address the following categories of non-storm water discharges or flows (i.e. illicit discharges) only if the small MS4 identifies them as significant contributors of pollutants to the small MS4.

Best Management Practice (BMP) Non-storm water discharges have not been identified as significant contributors of pollutants. Priority areas will be determined when specific problems are identified. Currently, no "hot spots" are identified. Due to the small size of the Village, these BMPs will be implemented throughout.

- 5.2.3.7.** Conduct dry weather field screening for non-storm water flows.

- 5.2.3.8.** Address on-site sewage disposal systems that flow into the storm drainage.

- 3.9. 1. *The Village has only one outfall discharge point. Systems map attached. Due to the nature of the Village MS4, source tracing will involve local tracking of the flow or other pollutant, typically expected to be within a few hundred feet. This is not expected to be a significant problem.*
2. *The Village will adopt the storm water management Ordinance 211 on August 8, 2007.*
3. *The Village works closely with Bernalillo County MS4 to coordinate detection and enforcement policies.*
4. *The size of the Village discharge of 5 cfs, when it rains, does not offer significant contribution to pollutants.*
5. *Training for plan review and Village employees in the field targets storm water BMPs. As part of the Village's on-going maintenance of our storm drainage facilities, these facilities are inspected on a regular basis. Village storm drain maintenance crews inspect in dry weather for any dry weather flow. If such flows are found, the crew will track the flow back to the source, find the cause of the discharge and inform the property owner of the non-storm water discharge. If the non-storm water discharge has not been identified as a significant contributor of pollutants, then no corrective action would be required. The Village does not anticipate that many, if any, dry weather flows will be found, primarily because the Village's roadway storm drain system is not extensive. This system's collection of storm water is limited to the Fourth Street Storm Water Drainage System for certain portions of the roadway in the Commercial district. Routine maintenance and visual inspection of the Willow Road stormceptor and outfall will be an on-going maintenance program as part of the Village NPDES/SWMP.*
6. *Articles in the Village Vision and on the Village website specifically address the hazards associated with illegal discharges and improper disposal of waste.*
7. *Goals for the illicit detection and elimination program include staff training and cooperative efforts with Bernalillo County inspectors. Given the Village's extremely limited resources, these measurable goals were selected based upon the total population impacted and the low cost and ease of implementation.*
8. *Implementation Schedule: Review complete within first year. Update, if required each year thereafter.*
9. *The Planning and Zoning Department is responsible for implementing and coordinating illicit discharge detection and elimination activities.*

5.2.4. Construction Site Storm Water Runoff Control.

- 5.2.4.1.** Develop, implement, and enforce a program to reduce pollutants in any storm water runoff to the small MS4 from construction activities that result in a land disturbance of greater than or equal to one acre. Reduction of storm water discharges from construction activity disturbing less than one acre must be included in the program if that construction activity is part of a larger common plan of development or sale that would disturb one acre or more.

Best Management Practice (BMP): Provide training for plan review, construction inspection and construction observation for all appropriate personnel within one year of assumption of these duties.

Best Management Practice (BMP): Review existing Village and Bernalillo County agreements for construction site inspection to ensure stormwater quality is adequately addressed.

- 5.2.4.2.** Using an ordinance or other regulatory mechanism available under the legal authorities of the small MS4, require construction site operators to practice erosion and sediment control and require construction site operators to control waste and properly dispose of wastes, such as discarded building materials, concrete truck washout, chemicals, litter, and sanitary waste at the construction site that may cause adverse impacts to water quality.

Best Management Practice (BMP): Incorporate the NOI and SWPPP procedure and process in the review process.

- 5.2.4.3.** Review all site plans for potential water quality impacts, including erosion and sediment control, control of other wastes, and any other impacts that must be examined according to the requirements of the law, ordinance, or other enforceable mechanism of Part 5.2.4.2. Before ground is broken at the construction site, the small MS4 operator must review the plans and verify that the BMPs proposed for the site are or would generally be expected to be appropriate for site conditions if properly installed and maintained. The MS4 Operator is not required to guarantee that BMPs selected by the construction site operator will prove effective in practice. Responsibility for replacing BMPs that prove ineffective in practice remains with the construction site operator.

Best Management Practice (BMP): Provide training for Plan reviewers and ensure that Code Enforcement Officer for construction is trained.

- 5.2.4.4.** Develop and implement procedures for site inspection and enforcement of control measures (including enforcement escalation procedures for recalcitrant or repeat offenders). Where the permit lacks legal authority for

direct enforcement action, the program must include notification procedures and if a construction site operator fails to comply with procedures or policies established by the permittee, the permittee may rely on EPA and the state environmental agency for assistance in enforcement of this provision of the permit.

- 5.2.4.5.**
1. *Village Ordinance 211 to be adopted August 8, 2007.*
 2. *Sanctions and enforcement mechanisms are included in the ordinance and the Village will coordinate with Bernalillo County.*
 3. *The Village requires all builders disturbing one acre or more or part of a one acre or larger subdivision to provide a copy of their SWPPP and a post-construction on-site water retention plan prior to issuance of their Village permit. Planning and Zoning staff, usually the Code Enforcement Officer, performs on-site inspections during the construction period.*
 4. *Village staff receives phone calls, e-mails or letters from the public and these are turned over to the Village Code Enforcement Officer*
 5. *Measurable Goals include compliance by all builders within the Village based on inspections, number of Code Enforcement cases within any year and number of volunteer reports. Given the Village's extremely limited resources, these measurable goals were selected based upon the total population impacted and the low cost and ease of implementation.*
 6. *Implementation Schedule: Currently in place. Review complete within first year. Update, if required each year thereafter. Planning and Zoning Assistant completed inspection training on July 12, 2007. Code Enforcement Officer will be trained at first opportunity.*
 7. *The Planning and Zoning Department is responsible for overseeing construction site runoff control activities.*

Measurable goals: No building permits for disturbance of one acre or more will be permitted without NOI/SWPPP.

- 5.2.5.2.** Develop and implement strategies that include a combination of structural and/or non structural **BMPs** appropriate for the community.

Best Management Practices (BMP) — Require builders/ developers to submit post-construction on-site water retention plan — berms, ponding areas, underground retention, etc.

Measurable goals: No building permits accepted without on-site water retention plan.

- 5.2.5.3. Use an ordinance or other regulatory mechanism to address post-construction runoff from new development and redevelopment projects to the extent allowable under the legal authorities of the small MS4.

Village Ordinance 211 to be adopted August 8, 2007.

- 5.2.5.4. Ensure adequate long-term operation and maintenance of BMPs

- 5.2.5.5. 1. *Each builder or developer must provide an on-site wafer retention plan which may utilize any one of a number of measures, berms, ponding areas, underground storage/holding tanks.*

2. *Ordinance to be enforced upon adoption.*

3. *Village planning and zoning staff, the Code Enforcement Officer and other Village personnel inspect the property and evaluate the effectiveness of the BMP employed.*

4. *The Village gives handouts to developers and builders concerning project design that minimize water quality impacts and works with them to design effective measures.*

5. *Measurable Goals include compliance by all builders within the Village based on inspections, number of Code Enforcement cases within any year. Given the Villages extremely limited resources, these measurable goals were selected based upon the total population impacted and the low cost and ease of implementation.*

6. *Implementation Schedule: Currently in place, ongoing. Review complete within first year. Update, if required each year thereafter*

7. *The Planning and Zoning Department is responsible for overseeing construction site runoff control activities.*

5.2.6. Pollution Prevention/Good Housekeeping for Municipal Operators

- 5.2.6.1.1. Maintenance activities, maintenance schedules, and long-term inspection procedures for controls to reduce floatables and other pollutants to the small MS4.

Best Management Practice (BMP) The Village Maintenance Department will be responsible for scheduled road maintenance and storm drainage maintenance. Village Maintenance Department will be responsible for

recycling hazardous materials in the shop, as well as maintaining the shop in an environmentally sound manner.

- 5.2.6.1.2.** Controls to reduce or eliminate the discharge of pollutants from streets, roads, highways, municipal parking lots, maintenance and storage yards, waste transfer stations, fleet or maintenance shops with outdoor storage areas, and salt and sand storage locations and snow disposal areas.

Best Management Practice (BMP): Perform an audit of municipal activities such as park maintenance, fueling areas, fire department operations, etc. to identify activities which may impact stormwater quality and which are not covered by existing BMPs.

- 5.2.6.1.3.** Procedures to properly dispose of waste removal from the small MS4 and municipal operations, including dredge spoil, accumulated sediments, floatables, and other debris.

Best Management Practice (BMP): Procedures in place to address potential municipal operations pollutant discharges.

- 5.2.6.1.4.** Procedures to ensure that new flood management projects are assessed for impacts on water quality and existing projects are assessed for incorporation of additional water quality protection devices or practices.

Assessment of new and existing flood management projects for impacts on water quality and incorporation of appropriate controls: New public works projects will incorporate stormwater management in accordance with BMPs

- 5.2.6.2.**
- 1.** *The Village only has one maintenance department.*
 - 2.** *The Village does not own or operate any industrial facilities.*
 - 5.** *Village employees will be given annual training on the disposal of materials that may contribute to the pollution of storm water discharge. New employees will receive information in their new employee's package.*

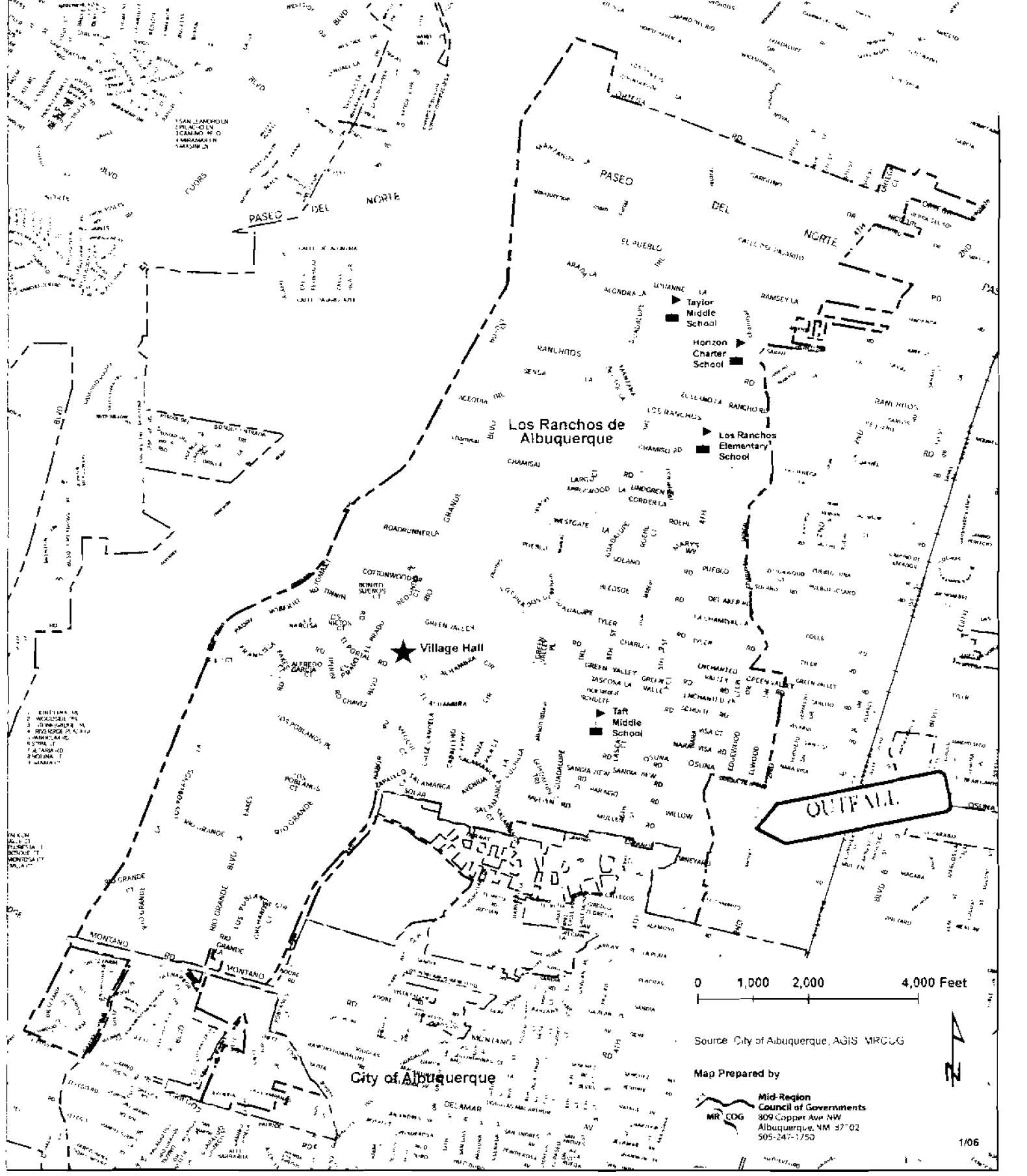
The Village has developed and implemented training material based on the Storm Water Management Fact Sheet, EPA 832-F-99-010 and will be updated to include any future training guidance that EPA publishes. This training includes the Storm Water Management Plan, processes and materials that the staff works with, safety hazards, practices for preventing discharges, and procedures for responding quickly and properly to hazardous materials incidents in conjunction with the Village Fire Department. The information provided to employees on the impact of storm water contamination will be similar to the information provided to the general public under our public

information BMPs. The staff currently receives training on the proper handling of hazardous materials and the impact of improper disposal of these materials on storm water has been added to the information.

- 6. Measurable Goals include the inspection and cleaning of storm inlet/outlet structures, measured by the number of structures inspected and cleaned per year; inspect storm sewers to ensure integrity of the system and also identify any dry weather flows, measured by the number of dry weather flows identified and remedied; clean storm sewer lines, inspect culverts; training in appropriate safety, BMPs, regulations and other areas as needed; measured by number of staff completing training. Capture spills on shop floors using dry chemicals and store in collection containers, capture and recycle used oils, antifreeze and parts cleaners.*
- 7. Implementation Schedule: Review complete within first year. Update, if required each year thereafter*
- 8. The Planning and Zoning Department is responsible for overseeing construction site runoff control activities.*

Please e-mail LLSeebach@villr.com or write to Terry Nighbert or Linda Seebach, Planning and Zoning Department, Village of Los Ranchos de Albuquerque, NM 87707.

Village of Los Ranchos de Albuquerque



0 1,000 2,000 4,000 Feet

Source: City of Albuquerque, AGIS, MRCDG

Map Prepared by

Mid-Region
Council of Governments
809 Copper Ave NW
Albuquerque, NM 87102
505-247-1750



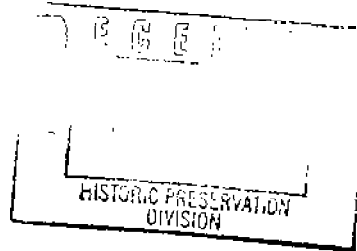
U.S. DEPARTMENT OF TRANSPORTATION
 FEDERAL HIGHWAY ADMINISTRATION
 NEW MEXICO DIVISION
 604 West San Mateo Road
 Santa Fe, New Mexico 87505

SUBJECT: NMSHTD Project No. TPU-(M)-5089(2)05, CN 3475
 Cultural Resources Investigations, District 3

In Reply Refer To:
 PPM-NM
 50i.1

State Historic Preservation Officer
 Office of Cultural Affairs
 Historic Preservation Division
 Villa Rivera, Room 301
 228 East Palace Avenue
 Santa Fe, New Mexico 87503

57734



Dear Dr. Sebastian:

We are enclosing for your review and comments a copy of a report entitled : **A Cultural Resource Survey and Records Search for the North Fourth Street Improvement Project, Bernalillo County, New Mexico, Cibola Research Consultants Reports No 201 and 220** We are also enclosing a copy of **the letter** prepared by F. Craig Conley transmitting the material. This coordination is being completed in accordance with the procedures included in the New Mexico Agreement Between the Advisory Council On Historic Preservation and the New Mexico State Historic Preservation Officer Under 36 CFR Section 8007.

The enclosed documents discuss the proposed project and historic properties in the area. The documents also describe the scope of the project. Please see this material for additional information.

In summary, we agree with the evaluations and recommendations included in the letter prepared by Mr. Conley. The **proposed project on North Fourth Street will have no effect on historic properties included in or eligible for inclusion in the National Register of Historic Places**

Subject to your concurrence, we have determined that the proposed project will have no effect on cultural properties included in or eligible for inclusion in the National Register of Historic Places. No additional investigations are recommended.

Sincerely yours,

Gregory D. Rawlings
 Gregory D. Rawlings
 Environmental Coordinator

For **Rubcn S. Thomas**
 Division Administrator

Enclosure

cc:
 Don L. Klima, ACHP, w/enclosures

Concurrence: *[Signature]* 6/9/99
 New Mexico State Historic Preservation Officer

FOR

SINCE PROJECT WILL HAVE AN EFFECT ON ELIGIBLE PROPERTIES NO ADVERSE EFFECT

Village of Los Ranchos de Albuquerque



Source: City of Albuquerque AGIS MRCCG

Map Prepared by
 Mid-Region
 Council of Governments
 MRCCG
 809 Cooper Ave. NW
 Albuquerque, NM 87102
 505-247-1750

STORM SEWER OVERVIEW

1
2
3
4
5
6
7
8
9
10
11
12
13
14
15
16
17
18
19
20
21
22
23
24
25
26
27
28
29
30
31
32
33
34
35
36
37
38
39
40
41
42
43
44
45
46

VILLAGE OF LOS RANCHOS
de ALBUQUERQUE

Ordinance 211

**AN ORDINANCE ESTABLISHING STORMWATER MANAGEMENT
ACCORDING TO EPA, NATIONAL POLLUTANT DISCHARGE ELIMINATION
SYSTEM (NPDES) REQUIREMENTS WITHIN THE VILLAGE OF LOS RANCHOS
DE ALBUQUERQUE,**

Be it ordained by the governing body of the Village of Los Ranchos de Albuquerque, hereafter "the Village":

Whereas the Clean Water Act 1987, Public Law 92-500, 33 U.S.C. 1251 et. seq. provides statutory authority for the National Pollutant Discharge Elimination System (NPDES) program, and

Whereas, the National Pollutant Discharge Elimination System designated the Village of Los Ranchos de Albuquerque a Municipal Separate Storm Sewer System operator (SM4), and

Whereas, 40 CFR 122.2 of the National Pollutant Discharge Elimination System requires each Municipal Separate Storm Sewer System operator to adopt an Ordinance regulating and controlling the discharge of pollutants to the waters of the United States, and

Whereas, the Village of Los Ranchos de Albuquerque does own a system of conveyance which is designed and used for collecting or conveying storm water that discharges to waters of the United States, and

Whereas the governing body finds it necessary, desirable and in the best interest of the Village and its residents to control the discharge of pollutants to waters of the United States, and

Whereas, the governing body finds the health, safety, and welfare of the Village residents is promoted by enacting regulations to identify and address the causes of pollution, and

Whereas, the governing body has submitted an application of Notice of Intent (NOI) to notify the Environmental Protection Agency as the permitting authority of the Village's intention to be covered by a general permit to discharge to the waters of the United States on April 1, 2007, and

Whereas, the governing body has caused to be prepared a Stormwater Management Plan for the Village, and

1 Whereas, the governing body has conducted two public meetings for review and
2 discussion of the Stormwater Management Plan on February 7, 2007 and March 7,
3 2007, and has placed newspaper publications on February 1, 2007, and March 1,
4 2007; posted notice on the Village's website and on the Village Bulletin Boards;
5 and caused notices to be placed in the February and March issues of the "Village
6 Vision" and
7

8 Whereas, the governing body has placed newspaper publication for notice of
9 review of the Ordinance on June 8, 2007; posted notice on the Village's website
10 and on the Village Bulletin Board: and caused the Ordinance to be available for
11 public review for a sixty day period from June 8, 2007 to August 8, 2007; and
12 caused two public hearings to be held for introduction and adoption of the
13 Ordinance on July 1, 2007 and August 8, 2007;
14

15 NOW THEREFORE, BE IT ORDAINED BY THE BOARD OF TRUSTEES THE
16 GOVERNING BODY OF THE VILLAGE OF LOS RANCHOS DE ALBUQUERQUE,
17 NEW MEXICO AS FOLLOWS:
18

19 **SECTION 1**
20 **DEFINITIONS**
21

- 22 **1) Best Management Practices (BMPs):** Activities or structural improvements
23 that help reduce the quantity and improve the quality of storm water runoff.
24 Best management practices are schedules of activities, prohibitions or
25 practices, maintenance procedures and other management practices to
26 prevent or reduce the pollution of waters of the United States. BMPs also
27 include treatment requirements, operating procedures, and practices to
28 control runoff, spillage, or leaks; sludge, waste disposal, or drainage from raw
29 material storage. With regard to construction, these practices may include
30 structural devices or nonstructural practices that are designed to prevent
31 pollutants from entering water or to direct the flow of water.
- 32 **2) Clean Water Act (Water Quality Act):** (formerly the Federal Water Pollution
33 Control Act or Federal Water Pollution Control Act Amendments of 1972).
34 Public law 92-500; 33 U.S.C. 1251 et. seq.; legislation which provides
35 statutory authority for the NPDES program. Also known as the Federal Water
36 Pollution Control Act.
- 37 **3) Comprehensive plan:** means the Village of Los Ranchos Comprehensive
38 Plan and amendments thereto.
- 39 **4) Conceptual grading and drainage plan:** means a plan prepared in graphical
40 format showing existing and proposed grading, drainage, control, flood control
41 and erosion control information in sufficient detail to determine project
42 feasibility.
- 43 **5) Conveyance:** The process of water moving from one place to another.

- 1 6) **Director:** The Director of Planning and Zoning, the official designated to
2 enforce the comprehensive zoning ordinance, as may be amended from time
3 to time.
- 4 7) **Discharge:** The volume of water (and suspended sediment if surface water)
5 that passes a given location within a given period of time.
- 6 8) **Design storm:** means a storm which deposits a stated amount of
7 precipitation within a stated period over a defined area and which is used in
8 calculating storm runoff and in designing drainage control, flood control and
9 erosion control measures.
- 10 9) **Developed land:** means any lot or parcel of land occupied by any structure
11 intended for human occupation, including structures intended for commercial
12 enterprise.
- 13 10) **Developer:** means any individual, estate, trust, receiver, cooperative
14 association, club, corporation, company, **firm**, partnership, joint venture,
15 syndicate, or other entity engaging in the platting, subdivision, filling, grading,
16 excavating, or construction of structures or facilities.
- 17 11) **Drainage:** means storm drainage.
- 18 12) **Drainage management or treatment:** means the treatment and/or
19 management of surface runoff from all storms up to and including a ten-year
20 design storm.
- 21 13) **Drainage plan:** means a short, detailed plan prepared in graphical format
22 with or on a detailed grading plan addressing onsite and off-site drainage
23 control, flood control, and erosion control issues for lots or parcels of less
24 than five acres.
- 25 14) **Drainage report:** means a comprehensive analysis of the drainage, flood
26 control, and erosion control constraints on and impact resulting from a
27 proposed platting, development or construction project.
- 28 15) **EPA:** means United States Environmental Protection Agency.
- 29 16) **Erosion control:** means treatment measures for the prevention of damages
30 due to soil movement and to deposition.
- 31 17) **Erosion control plan:** means a plan for the mitigation of damages due to soil
32 erosion and to deposition.
- 33 18) **Excavation:** The process of removing earth, stone, or other materials from
34 land.
- 35 19) **Flood control:** means the treatment measures necessary to protect life and
36 property from the 100-year design storm runoff.
- 37 20) **Flood hazard area:** means an area subject to inundation from the 100-year
38 design storm runoff.
- 39 21) **General Permit:** A permit issued under the NPDES program to cover a
40 certain class or category of storm water discharges. These permits reduce the
41 administrative burden of permitting storm water discharges.
- 42 22) **Grading:** The cutting and/or filling of the land surface to a desired slope or
43 elevation.
- 44 23) **Grading plan:** means a plan describing the existing topography and
45 proposed grading, including retaining wall locations and details, interfaces
46 with adjacent properties, streets, alleys and channels, referenced to mean

1 sea level (1929 or 1988 datum) such as city benchmark or NMDOT
2 benchmark, and showing sufficient contours, spot elevations and cross
3 sections to allow a clear understanding by reviewers, contractors, and
4 inspectors.

5 **24) Illicit Connection:** Any discharge to a municipal separate storm sewer that is
6 not composed entirely of storm water and is not authorized by an NPDES
7 permit, with some exceptions (e.g., discharges due to fire fighting activities).

8 **25) Maintenance:** means the cleaning, shaping, grading, repair and minor
9 replacement of drainage, flood control and erosion control facilities, but not
10 including the cost of power consumed in the normal operation of pump
11 stations.

12 **26) Maximum Extent Practicable (MEP):** A standard for water quality that
13 applies to all MS4 operators regulated under the NPDES Storm Water
14 Program. Since no precise definition of MEP exists, it allows for maximum
15 flexibility on the part of **MS4** operators as they develop and implement their
16 programs.

17 **27) Municipal Separate Storm Sewer System (MS4):** A publically owned
18 conveyance or system of conveyances that discharges to waters of the U.S.
19 and is designed or used for collecting or conveying storm water, is not a
20 combined sewer, and is not part of a publicly-owned treatment works
21 (POTW).

22 **28) Non-point Source (NPS) Pollutants:** Pollutants from many diffuse sources.
23 NPS pollution is caused by rainfall or snowmelt moving over and through the
24 ground. As the runoff moves, it picks up and carries away natural and human-
25 made pollutants, finally depositing them into lakes, rivers, wetlands, coastal
26 waters, and even our underground sources of drinking water.

27 **29) Notice of Intent (NOI):** Notice of Intent.

28 **30) NPDES:** "National Pollutant Discharge Elimination System" the name of the
29 surface water quality program authorized by Congress as part of the 1987
30 Clean Water Act. This is EPA's program to control the discharge of pollutants
31 to waters of the United States (see 40 **CFR** 122.2). Phase II.

32 **31) Nuisance waters:** means those waters leaving a site and entering a public
33 right of way.

34 **32) 100-year design storm:** means that storm whose precipitation within a six-
35 hour period and resulting runoff has a one percent chance of being equaled
36 or exceeded in any given year. A special condition may require/allow use of
37 storms of longer duration.

38 **33) Outfall:** The point where wastewater or drainage discharges from a sewer
39 pipe, ditch, or other conveyance to a receiving body of water.

40 **34) Physically interconnected MS4:** This means that one MS4 is connected to
41 a second MS4 in such a way that it allows for direct discharges into the
42 second system.

43 **35) Point Source Pollutant:** Pollutants from a single, identifiable source such as
44 a factory or refinery.

45 **36) Pollutant Loading:** The total quantity of pollutants in storm water runoff.

- 1 37) **Regulated MS4:** Any MS4 covered by the NPDES Storm Water Program
2 (regulated small, medium, or large MS4s).
- 3 38) **Retrofit:** The modification of storm water management systems through the
4 construction and/or enhancement of wet ponds, wetland plantings, or other
5 BMPs designed to improve water quality.
- 6 39) **Runoff:** Drainage or flood discharge that leaves an area as surface flow or as
7 pipeline flow. Has reached a channel or pipeline by either surface or sub-
8 surface routes.
- 9 40) **Sediment:** Soil, sand, and minerals washed from land into water, usually
10 after rain. Sediment can destroy fish-nesting areas, clog animal habitats, and
11 cloud waters so that sunlight does not reach aquatic plants.
- 12 41) **Site Runoff:** Any drainage or flood discharge that is released from a specified
13 area.
- 14 42) **Small Municipal Separate Storm Sewer System (MS4):** Any MS4 that is
15 not regulated under Phase I of the NPDES Storm Water Program and
16 Federally-owned MS4s.
- 17 43) **Storm Drain:** A slotted opening leading to an underground pipe or an open
18 ditch for carrying surface runoff.
- 19 44) **Storm drainage system:** means arroyos, storm drains, roadways, culverts,
20 bar ditches, ponds, pump stations, dams, detention ponds, retention ponds,
21 inlets, and appurtenant structures and other facilities which convey
22 stormwater.
- 23 45) **Storm Water:** Precipitation that accumulates in natural and/or constructed
24 storage and storm water systems during and immediately following a storm
25 event.
- 26 46) **Storm Water Management:** Functions associated with planning, designing,
27 constructing, maintaining, financing, and regulating the facilities (both
28 constructed and natural) that collect, store, control, and/or convey storm
29 water.
- 30 47) **Storm Water Pollution Prevention Plan (SWPPP):** A plan to describe a
31 process whereby a facility thoroughly evaluates potential pollutant sources at
32 a site and selects and implements appropriate measures designed to prevent
33 or control the discharge of pollutants in storm water runoff.
- 34 48) **Stormwater quality control:** means the treatment methods necessary to
35 protect and enhance the quality of stormwater.
- 36 49) **Surface Water:** Water that remains on the surface of the ground, including
37 rivers, lakes, reservoirs, streams, wetlands, **impoundments**, seas, estuaries,
38 etc.
- 39 50) **Ten-year design storm:** means that storm whose precipitation within a six
40 hour period and resulting runoff has a ten percent chance of being equaled or
41 exceeded in any given year. A special condition may require/allow use of
42 storms of longer duration.
- 43 51) **Total Maximum Daily Load (TMDL):** The maximum amount of pollutants
44 which can be released into a water body without adversely affecting the water
45 quality.

- 1 **52) Urban Runoff:** Storm water from urban areas, which tends to contain heavy
2 concentrations of pollutants from urban activities.
- 3 **53) Wet Weather flows:** Water entering storm drains during rainstorms/wet
4 weather events.

5
6
7 **SECTION II**
8 **GENERAL REGULATIONS**
9

10 **A.** The Village shall, under direction of the Director of Planning and Zoning,
11 develop, implement, and enforce, according to EPA standards, a
12 Stormwater Management Plan designed to reduce the discharge of
13 pollutants from a small MS4 to the maximum extent practicable (MEP), to
14 protect water quality, and to satisfy applicable surface water quality
15 standards.

16
17 **1. STORM DRAINAGE**

- 18 (a) Prevent the creation of public safety hazards and seek to
19 eliminate existing problems.
- 20 (b) Prevent, to the extent feasible, the discharge of storm runoff
21 from public facilities onto private property.
- 22 (c) Prevent the increased risk of damage to private property caused
23 by storm runoff from other private property.
- 24 (d) Coordinate with the MRGCD, AMAFCA, Bernalillo County and the
25 City of Albuquerque the discharge of storm runoff into MRGCD
26 and AMAFCA facilities and minimize impact on downstream
27 facilities.
- 28 (e) Provide for timely and effective construction and maintenance of
29 storm drainage facilities.
- 30 (f) Design storm drainage facilities, which provide effective storm
31 drainage and flood control.
- 32 (g) Improve the quality of storm runoff.

33
34 **2. EROSION CONTROL**

- 35 (a) Protect the hydraulic capacity of flood control and storm drainage
36 facilities from losses due to sedimentation and degradation.
- 37 (b) Preserve public health, safety, and convenience from jeopardy
38 due to erosion and sedimentation in private and public facilities of
39 all types.
- 40 (c) Preserve the quality of surface runoff.

41
42
43 **SECTION III**
44 **ILLCIT DISCHARGE**
45

1 **A. NON-STORM WATER DISCHARGE.** It is prohibited to discharge into the
2 storm sewer system any form of pollutant, including but not limited to:

- 3 1. Automotive oils, gasoline, grease, fluids, or other waste products;
- 4 2. Floatables – such as plastic bags, fast food wrappers, Styrofoam cups,
5 soft drink cans, or cups, etc.;
- 6 3. Plant refuse – weeds, tree trimmings, leaves, etc.;
- 7 4. Water line flushing;
- 8 5. Landscape irrigation or sprinkler run off;
- 9 6. Fertilizers, pesticides, or poisons;
- 10 7. Diverted stream or ditch flows;
- 11 8. Uncontaminated pumped groundwater;
- 12 9. Discharges from potable water sources;
- 13 10. Foundation drains;
- 14 11. Open space or agricultural irrigation water;
- 15 12. Car washing between Mullen and Schulte on 4th Street or where water
16 flows into storm sewer outlets;
- 17 13. Flows from riparian habitats and wetlands;
- 18 14. De-chlorinated swimming pool discharges;
- 19 15. Toxic spills;
- 20 16. Street wash water;
- 21 17. Animal waste;
- 22 18. Grease from cooking, commercial and residential;
- 23 19. Household cleaning products.

24
25
26 **B. ILLEGAL DUMPING** It is prohibited for any person or persons to deposit
27 trash, household items, yard debris, appliances, or any such items on Village
28 of Los Ranchos owned or controlled property.

- 29
30 1. All possible investigative means may be utilized to determine the
31 person or persons responsible for illegal dumping.

32
33 **C. GROUNDWATER CONTAMINATION** Any activity which contributes to
34 ground water contamination through the burying of animal waste, dead
35 animals, garbage or toxic chemicals is expressly prohibited.

- 36
37 1. All possible investigative means may be utilized to determine the
38 person or persons responsible for groundwater contamination.

39 40 **SECTION IV** 41 **STORMWATER DISCHARGE**

42
43
44 **A. NEW CONSTRUCTION**
45

- 1 1. All construction, development, and redevelopment projects with land
2 disturbances equal to or greater than one acre, including sites, which
3 disturb less than one acre, but are part of a larger common plan of
4 development, must, at the time of application to the Village, submit:
5
6 (a) A Notice of Intent permit issued by EPA.
7
8 (b) A Stormwater Pollution Prevention Plan (SWPPP) including Best
9 Management Practices to prevent stormwater discharge in
10 accordance with EPA NPDES Phase II regulations for
11 construction site storm water runoff control.
12
13 2. The stormwater pollution prevention plan shall outline the BMPs to be
14 undertaken by the operator/owner of the project to protect storm water
15 quality during the construction phase of the project.
16
17 (a) These BMPs shall be maintained by the owner of the property.
18 Inspection of these BMPs shall be made at a minimum once a
19 week by the owner and a log of this inspection shall be kept on-
20 site for review by the Village. The Village shall also inspect these
21 BMPs on a periodic basis. These BMPs shall be subject to the
22 approval of the Planning and Zoning Department.
23
24 3. Construction and development sites must control and properly dispose
25 of construction wastes, trash, chemicals, etc.
26

27 **B. POST CONSTRUCTION**
28

- 29 1. All development and redevelopment projects with land disturbances
30 equal to or greater than one acre, including sites which disturb less
31 than one acre but are part of a larger common plan of development
32 and all construction of additions to buildings or of outbuildings over
33 50% of existing Floor Area Ratio, must submit a Grading and Drainage
34 Plan with a Certified Engineer's stamp showing on-site water retention
35 ponding volumes.
36
37 2. For all development and redevelopment projects with land
38 disturbances equal to or greater than one acre, including sites which
39 disturb less than one acre but are part of a larger common plan of
40 development, and all construction of additions to buildings or of
41 outbuildings over 50% of existing Floor Area Ratio within the
42 Village, post construction water quality BMPs are required. This
43 requirement is in addition to any other requirements that may apply.
44 These BMPs shall be subject to the approval of the Planning and
45 Zoning Department.
46

- 1 3. Contractors or developers must complete the on-site water retention
2 ponding, berming, banking, ditching, or underground retention system
3 prior to receipt of Certificate of Occupancy or in case of subdivisions,
4 sales of lots to the public.
5
6 4. Maintenance responsibility of stormwater control is the responsibility of
7 the property owner up to the point where stormwater enters public
8 facilities.
9
10 5. Where a site development, building permit, a major or minor
11 subdivision, or a replat alters the elevation or location of any
12 designated 100-year floodplain, as shown on current FEMA flood
13 insurance rate maps, the developer shall be required to provide to
14 the Village all necessary data needed to effect the flood
15 boundary revision or amendment. Any required fees for processing
16 shall be the responsibility of the developer.
17
18 6. Site development and major or minor subdivisions or replats shall be
19 designed and constructed such that non-stormwater discharges into
20 storm sewers, ditches, or watercourses will not occur.
21
22

23 **C. STORM WATER DISCHARGE FROM INDIVIDUAL PARCELS**
24

- 25 1. The discharge of nuisance waters from private property to public
26 streets is prohibited. Arterial and collector streets shall be protected
27 from damages to the surface and from the safety hazard created by
28 surface flow of nuisance waters across them.
29
30 (a) Parking lots, yards, open fields, landscaped areas,
31 developed and undeveloped lots shall be bermed, banked,
32 ponded, ditched, or otherwise contoured for on-site water
33 retention to prevent stormwater runoff onto Village streets and
34 roads or ditches.
35

36 **SECTION V**
37 **ADMINISTRATION**
38

- 39 **A.** The design, construction, and maintenance of all drainage control, flood
40 control, erosion control, and stormwater quality control facilities within
41 the Village shall be performed in accordance with procedures, criteria
42 and standards formulated by the Director of Planning and Zoning and in
43 accordance with the policies established in this Ordinance.
44

1
2
3
4
5
6
7
8
9
10
11
12
13
14
15
16
17
18
19
20
21
22
23
24
25
26
27
28
29
30
31
32
33
34
35
36
37
38
39
40
41
42
43
44

- B.** All construction activities within the jurisdiction of the Village shall conform to the requirements of the Ordinance with respect to drainage control, flood control, erosion control and stormwater quality control.
 - 1. Construct'on, grading or paving on any lot within the Village shall not increase the damage potential to adjacent properties or public facilities. Damages shall be defined as those caused by flooding, erosion, and sedimentation from the 100-year design storm and all smaller storms.
 - 2. Any grading shall provide for erosion control and the safe passages of the ten-year design storm runoff during the construction phase and until the permanent improvements are completed.
 - 3. Grading, cut, fill or importation of material in excess of 500 cubic yards or grading of any area of one acre or more, or any grading which will adversely affect other properties, ditches, watercourses or easements shall conform to drainage control, flood control, erosion control and stormwater quality control policies and to standards, criteria and procedures established by the Village with respect to drainage, flood control, erosion control, and stormwater quality
- C.** The Village may participate with the private sector, other public bodies, and agencies operating within the jurisdiction of this Ordinance in order to accomplish the goals and implement the policies adopted herein. This includes, but shall not be limited to, the development and adoption of master plans, participation in the construction of projects, and exercising control through the planning, platting, zoning, and permitting processes.
- D.** It shall be the responsibility of the Director of Planning and Zoning to produce, approve, make and retain records of all drainage plans, drainage reports, design analyses, design drawings, as-built drawings, and maintenance schedules related to all drainage control, flood control, erosion control, and stormwater quality control facilities constructed within the Village.
- E.** Application for all land use changes shall address drainage control, flood control, and erosion control in terms of the interaction of these parameters with other requirements and needs produced by the proposed land use changes, and shall comply with an adopted drainage management plan.
- F.** Requests for building permits, site plan approval, or the platting of land for the purpose of major or minor subdivisions, and for replats, shall be accompanied by appropriate grading, drainage control, flood control, erosion control, and stormwater quality control information.

1. Grading and Drainage plan. Drainage plans are prepared with or on the detailed grading plan and address both on-site and off-site drainage control, flood control and erosion control issues.
 2. Drainage report. A drainage report is a comprehensive analysis of the drainage control, flood control, and erosion control constraints on and impacts resulting from a proposed platting, development, or construction project. Drainage reports are required for major subdivisions containing more than five lots or constituting five acres or more, platting or construction within a designated flood hazard area.
 3. Erosion control plan. An erosion control plan is usually incorporated into the drainage plan or drainage report. Erosion control plans address all phases of each project from initial grading, through, and including final occupancy. The ten-year design storm shall be used to determine the treatment measures necessary for the prevention of damage due to soil movement for the on-site area of development.
- G.** All drainage submittals shall be prepared under the direction of and signed by a registered professional engineer competent in surface hydrology and drainage, and shall include a statement that the engineer has personally inspected the land, and a statement as to whether it appears that grading, filling, or excavation has occurred thereon since the existing contour map was prepared.
- H.** Submitted plans will be checked by the Village designated engineer and the applicant shall bear the cost per Resolution No. 2003-6-2.
- I.** Drainage control considerations specifically address safety, convenience, and economics for both private property and public facilities.

SECTION VI INSPECTIONS

- A.** Whenever necessary to make an inspection to enforce any of the provisions of this article, the Director of Planning and Zoning or his authorized representative may enter such premises at any reasonable time to inspect the premises or to perform any duty imposed upon him; provided, however, that if such premises is occupied, he shall first present proper credentials and demand entry. If such premise is unoccupied, he shall first make a reasonable effort to locate the owner or other persons having charge or control of the premises and demand entry.
- B.** If entry is refused or if the owner or other responsible person is not found, the Director or his authorized representative shall proceed according to Ordinance 183, Chapter 31, Section 23, (3).

1
2
3 **SECTION VII**
4 **VIOLATIONS, NONCOMPLIANCE, PENALTY**
5

- 6
7 **A.** If the Director finds that any of the conditions of this Ordinance are being
8 violated, he shall notify in writing, the owner: tenant, agent, occupant, or
9 person in charge of the premises, indicating the nature of the violation and
10 ordering its correction within seventy two (72) hours from the date of
11 notification, or in case of severe overflow violation, immediate remedy.
12
- 13 **B.** Where, after investigation, a notice has been issued by the Director or his
14 authorized representative to the owner, tenant, agent, occupant, or person in
15 charge of the premises on which a violation has occurred and the order is
16 not complied with, within the designated time, or if the responsible party or
17 violator cannot be found or determined, the Director may cause
18 such remedies as are necessary to be made. The reasonable cost of such
19 remedies shall constitute a lien against the property on which the violation
20 occurred and was remedied. The lien shall be imposed and foreclosed in
21 the manner provided in NMSA 1978, Sections 3-36-1--3-36-6.
22
- 23 **C.** For prohibited dumping or groundwater contamination, or a second violation
24 of this Ordinance, the Director or designated representative is hereby
25 authorized to issue citations for violation of this Ordinance. Such citations
26 shall order the alleged violator to appear on a date certain in Village Municipal
27 Court at the next regularly scheduled Court session or any special setting the
28 Judge may designate. Violators will be prosecuted to the full extent of the law.
29
- 30 **D.** Where, after investigation, a notice has been issued by the Director to the
31 owner, tenant, agent, occupant, or person in charge of the premises of the
32 property on which a violation has occurred and the order is not complied with,
33 within such reasonable time as may be prescribed by the Director, the Village
34 may revoke or refuse to renew or issue any permit to the violator and/or the
35 property owner until such remedies, as are necessary, are made, or if remedy
36 is made by the Village, until the cost of such remedies is paid to the Village.
37
- 38 **E.** It shall be sufficient notice under the provisions of this section to make
39 delivery of such notices in person or by registered mail. If the name and
40 address of the owner cannot be reasonably ascertained from the current
41 county tax rolls and the premises are unoccupied, it shall be sufficient notice
42 under this section to publish the notice in English in a newspaper of general
43 circulation once a week for four consecutive weeks. The owner of the
44 property shall have the right to appeal pursuant to Chapter 31, Section 24, §
45 (H) of the Codified Ordinances of the Village of Los Ranchos.
46

1
2
3
4
5
6
7
8
9
10
11
12
13
14

**SECTION VIII
ADDITIONAL PERMITS**

15 The issuance of a permit by the Village does not relieve the owner/developer from
16 obtaining any additional grading or fill permits that may be required by
17 Bernalillo County, the State of New Mexico, M.R.G.C.D., A.M.A.F.C.A., Bernalillo
18 County, City of Albuquerque, ABCWUA, agencies, or governmental bodies having
19 jurisdiction over these areas of the Village by State Law, Joint Powers Agreements,
20 or Memorandums of Understanding.

21
22
23
24
25
26
27
28
29
30

**SECTION IX
APPEALS**

31 **A.** An appeal of a determination of the Director may be made in the manner
32 prescribed in Chapter 31, Section 24, § (H) of the Codified Ordinances of the
33 Village of Los Ranchos.

34
35
36
37
38
39
40
41
42
43

**SECTION X
SEVERABILITY**

44 Any section, subsection, sentence, clause or phrase of this Ordinance or the Code
45 that is held to be unconstitutional or invalid shall not affect the validity of the
46 remaining portions of this Ordinance or the Code, since the Board of Trustees
expressly intended to pass each section, subsection, sentence, clause, phrase, and
part of this Ordinance or the Code separately and independently of every other part.

47
48
49
50
51
52
53
54
55
56

**SECTION XI
COMPILING CLAUSE**

57 This Ordinance shall be incorporated and compiled as part of the Codified Municipal
58 Code of the Village of Los Ranchos.

59 APPROVED AND ADOPTED by the Governing Body of the Village of Los Ranchos
60 de Albuquerque this _____ day of _____, 2007.

61
62
63
64
65
66

Larry P. Abraham
Mayor

1 **ATTEST:**

2

3

4

5

6

7

8 _____
Annabelle Silvas, CMC

9 Clerk

10

11

12

TRAINING MANUAL
Village of Los Ranchos de Albuquerque
EMPLOYEES

STORM WATER
NATIONAL POLLUTION DISCHARGE ELIMINATION SYSTEM
ORDINANCE 211

Storm water runoff is our most common cause of water pollution. Unlike pollution from industry or sewage treatment facilities, which is caused by a discrete number of sources, storm water pollution is caused by the daily activities of people everywhere. Rainwater and snowmelt run off streets, lawns, farms, and construction and industrial sites and pick up fertilizers, dirt, pesticides, oil and grease, and many other pollutants on the way to our rivers, lakes, and coastal waters.

The United States Environmental Protection Agency (EPA) regulates storm water discharges under the Clean Water Act's National Pollution Discharge Elimination System (NPDES) program. The NPDES regulations cover discharges from municipal separate storm sewer systems (MS4s), certain industrial activities, and construction activities that disturb one acre or more of land.

MS4s

The Storm Water Phase II Final Rule requires operators of regulated (MS4s) to obtain a NPDES permit and develop a storm water management program designed to prevent harmful pollutants from being washed by storm water runoff into bodies of water. The Village of Los Ranchos was required to submit an application for a permit by April 1, 2007. This application included a Storm Water Management Program that includes the following six minimum control measures:

- Public Education and Outreach
- Public Participation/Involvement
- Illicit Discharge Detection and Elimination
- Construction Site Runoff Control
- Post-Construction Runoff Control
- Pollution Prevention/Good Housekeeping

The Village has only one outfall into the Alameda Drain (Main Canal) on Willow. The inlets are marked that these waters flow to waterways. There are hazards associated with illegal discharges and improper disposal of waste.

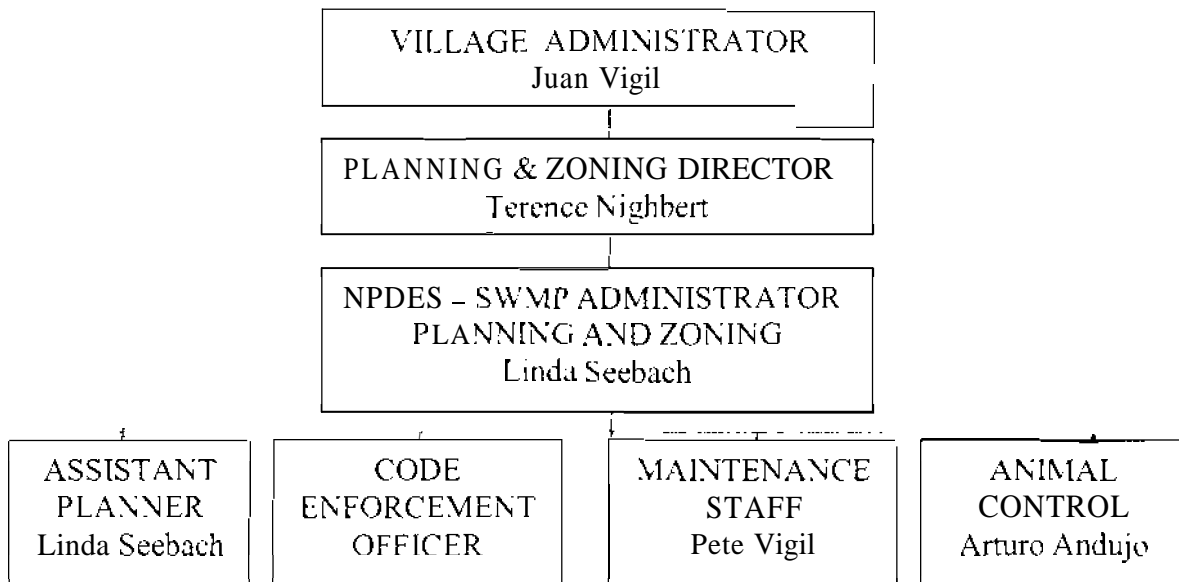
Endangered species specific to the Village of Los Ranchos are:

1. Fish — Rio Grande Silvery Minnow
2. Bird — Southwestern Willow Flycatcher
3. Mammal — Black-Footed Ferret

■ - TRAINING

Village employees will be given annual training in the duties and responsibilities associated with Stormwater and the Village SWMP. New employees will receive the SWMP Training Manual.

2. ORGANIZATIONAL CHART



CONTACT INFORMATION: Village Hall 344-6582
Emergency 977-4830 (Arturo Andujo)
Los Ranchos Fire Department 345-9148
Liseebach@villr.com

3. SPECIFIC DUTIES –SWMP ADMINISTRATOR UNDER DIRECTION OF PLANNING AND ZONING DIRECTOR

A) Implement and monitor Village of Los Ranchos Storm Water Management Program six minimum control measures:

- Public Education and Outreach
- Public Participation/Involvement
- Illicit Discharge Detection and Elimination

- Construction Site Runoff Control
- Post-Construction Runoff Control
- Pollution Prevention/Good Housekeeping

- B)** Oversee implementation of Storm Water Management Ordinance
- C)** Oversee implementation of Public Education and Outreach, including preparation, procurement and distribution of public education materials.
- D)** Oversee Code Enforcement Officer and Village Maintenance Personnel in discharge of their duties and responsibilities.
- E)** Review all plans submitted for compliance with NPDES – require NOI and SWPPP on all projects disturbing one acre or more per Storm Water Management Ordinance.
- 1) Review all site plans for potential water quality impacts, including erosion and sediment control, control of other wastes, and any other impacts that must be examined according to the requirements of the Storm Water Management Ordinance
 - 2) Before ground is broken at the construction site, review the plans and verify that the BMPs proposed for the site are or would generally be expected to be appropriate for site conditions if properly installed and maintained. It is not required to guarantee that BMPs selected by the construction site operator will prove effective in practice. Responsibility for replacing BMPs that prove ineffective in practice remains with the construction site operator.
 - 3) Implement procedures for site inspection and enforcement of control measures including notification procedures and escalation procedures as permitted under the Storm Water Management Ordinance.
 - 4) Coordinate site inspection and enforcement with Bernalillo County, City of Albuquerque, AMAFCA and M.R.G.C.D..
- F)** Review all plans submitted for grading and drainage plan with post-construction on-site storm water retention.
- G)** Write and publish periodical updates for Village Vision and Village Website.
- H)** Respond to all questions, comments or concerns from the public.

- I) Maintain a storm sewer system map, showing the location of all outfalls and the names and location of all waters of the United States that receive discharges from those outfalls.
- J) Assess new flood management projects for impacts on water quality and existing projects for incorporation of additional water quality protection devices or practices.
- K) File yearly reports for SWMP with EPA

**4. SPECIFIC DUTIES – PUBLIC EDUCATION AND OUTREACH
PUBLIC PARTICIPATION/INVOLVEMENT**

- A) Write and publish Stormwater Management articles for the Village Vision four times per year.
- B) Make available fliers, stickers, handouts concerning stormwater pollution for the general public on ongoing basis.
- C) Post all appropriate public notices concerning the SMPW in Westside Journal, bulletin boards and website.
- E) Respond to public inquiries, comments and/or complaints concerning storm water management.
- F) Assist Director in fulfilling duties and responsibilities of implementing SWMP and Stormwater Management Ordinance.

5. SPECIFIC DUTIES – CODE ENFORCEMENT OFFICER

- A) Responsible for monitoring Village and implementing Storm Water Management Ordinance.
- B) Monitor storm drainage system in conjunction with Maintenance Personnel.
 - 1) Inspect outfall and sample water after ½ inch rainfall monitored by rain gauge.
 - A) Determine water quality by:
 - 1) Color
 - 2) Odor

- 3) Sedimentation
 - 4) Presence of oil, grease, etc.
 - B) Send sample to testing lab if any contaminate detected by field test.
- 2) Inspect inlets monthly. Identify any flows and determine if illicit.
 - A) Determine water quality by:
 - 1) Color
 - 2) Odor
 - 3) Sedimentation
 - 4) Presence of oil, grease, etc.
 - 2) If illicit, track the flow or other pollutant discharge back to the source. (typically expected to be within a few hundred feet).
 - 3) Identify and locate owner of property.
 - A) Issue citation for violation of illicit dumping or
 - B) Issue 72 hour notice of non compliance per Ordinance, or immediate remedies as necessary
 - 4) Document inspection with date and subsequent action notation and follow up.
- C) Perform on site inspection of new construction sites and subdivision development per Ordinance 211. compliance with **§ IV**.
 - 1) Require construction site operators to practice erosion and sediment control and require construction site operators to control waste and properly dispose of wastes, such as discarded building materials, concrete truck washout, chemicals, litter, and sanitary waste at the construction site that may cause adverse impacts to water quality.
 - 2) Document on-site construction inspection by date and notation of action and follow up.
- D) During plan check reviews ensure NOI, SWPPP and grading and drainage plan for *post* construction, on-site water retention meet NPDES requirements.

- E)** Inspect restaurants for installation and proper working condition of grease traps.
 - 1) Document inspection by date and notation of action, follow up.

- F)** Identify significant contributors of pollutants that are non-storm water discharges.
 - j If illicit, track the flow or other pollutant discharge back to the source, (typically expected to be within a few hundred feet).

Illegal discharges include, but are not limited to: animal and pet waste (fecal coli form bacteria), floatables, drainage and grading (erosion and sediment), water line flushing, landscape irrigation, diverted stream Rows, rising ground waters, uncontaminated ground water infiltration, uncontaminated pumped ground water, discharges from potable water sources, foundation drains, irrigation water, springs, water from crawl space pumps, footing drains, lawn watering, car washing, flows from riparian habitats and wetlands, dechlorinated swimming pool discharges, and street wash water. Illegal dumping of oil, grease, household cleaners, transmission and radiator fluid into ditches and canals. Illegal dumping of household trash or food containers, illegal ground water contamination.

 - 2) Identify and locate owner of property
 - 3) Issue citation for illicit dumping, groundwater contamination,
 - 4) Issue 72 hour notice of non compliance per Ordinance 217, or notice of immediate remedy.
 - 5) Document by date and notation of action and follow up.

- G)** Inspect for on-site sewage disposal systems that flow into the storm drain or ditches.
 - 1) Document inspection and notation of action, follow up.

- H)** Maintain records of illegal dumping activity by date, location, photographic record and action taken, follow up.

- I)** Work in a cooperative effort with Bernalillo County. City of Albuquerque, AMAFCA, and M.R.G.C.D. inspectors.

- J)** Answer all phone calls, e-mails or letter from the public with complaints concerning storm water management.

- 1) Maintain records of contacts, document action, follow up
- K)** Coordinate with Village Fire Department for emergency shut-off procedures in event of toxic spill or other hazard which would flow through the storm sewer system into the Alameda Drain, (main canal).

6. SPECIFIC DUTIES – VILLAGE MAINTENANCE PERSONNEL

- A)** Implement the Pollution Prevention/Good Housekeeping for Municipal Operators control measures.
- 1) Reduce fertilizer application to plants and agricultural crops.
 - 2) Ensure that borders are maintained so that irrigation and lawn water do not run into the street.
 - 3) Use herbicides with short residual life at lowest effective concentration.
 - 4) Move sprinkler heads away from street.
 - 5) Install low water use landscaping where appropriate.
 - 6) Care for plants properly without excess fertilizer or water.
 - 7) Reduce turf areas where appropriate.
 - 8) Use short cycles of watering instead of heavier water programs to eliminate runoff into streets and arroyos.
 - 9) Use reduced pressure on irrigation system to reduce over-spray and misting.
 - 10) Make sure sprinkler systems, drip systems and irrigation systems are in good repair, installed correctly and operate effectively.
 - 11) Improve grades on turf areas to eliminate runoff into streets and arroyos.
 - 12) Install silt boxes and cobblestone at runoff exits into arroyos.
- B)** Mark and maintain drain markers on; all drains with the notice that this drain outfalls to waterways.
- C)** Drain inspection and maintenance Schedule
- 1) Inspect and clean storm inlet/outlet structures:
 - a. On a monthly basis and more often during the heavy summer rain season and the heavier snow fall occurrences.
 - b. Village Maintenance crew and specialized jet-vac truck to assure drainage inlets are clean of debris and silt build-up for maintaining the system efficiency.

- c. Remove debris and growth from around outfall in main canal.
 - d. Main storm water outfall will be maintained by contract with company that has larger equipment for clean-out of large infiltrator at outfall.
 - 2j Keep maintenance records of the number of structures inspected and cleaned by date.
 - 3) Inspect storm sewers to ensure integrity of the system:
 - a, Inspect the storm sewers after summer rain season and the heavier snow fall occurrences.
 - b. Village Maintenance crew and specialized jet-vac truck to assure storm sewer system is clean of debris and silt build-up for maintaining the system efficiency.
 - c. Main storm water outfall will be maintained by contract with company that has larger equipment for clean-out of large infiltrator at outfall.
 - 4) Identify any dry weather flows, report to Code Enforcement Officer.
 - 5) Record the number of dry weather flows identified and reported.
 - 6) Clean storm sewer lines. inspect culverts by on-site inspection and inventory reports of condition.
 - 7j Main storm water retention system to be walked four times per year for inspection of all grout joints, grate inlets, manholes and junctions.
 - 8) Check surrounding area around apron of outfall and remove any vegetation, trash or obstruction regularly.
- D) Inspection procedures
- 1) Maintenance activities, maintenance schedules, and long-term inspection procedures for controls to reduce floatables and other pollutants to the small MS4.
- E) Road maintenance schedule:
- 1) All public roads will be maintained to reduce undue ponding at intersections and driveways to keep the collection of pollutants from concentrating at roadside ponding areas.

- 2) Reports of ponding will be made to the Code Enforcement Officer to determine source.
- F) Shop maintenance schedule:
- 1) All equipment used for storm system and road maintenance are routinely serviced according to the manufacturer's recommendation by a certified mechanic.
 - 2) Capture spills on shop floors using dry chemicals and store in collection containers, capture and recycle used oils, antifreeze and parts cleaners.
 - 3) Recycle materials in the shop, as well as maintaining the shop in an environmentally sound manner.
 - 4) Recycle hazardous materials in the shop in an environmentally safe way.
 - 5) Complete check list for shop upon completion of scheduled shop maintenance.
- G) Perform periodic audit of municipal activities such as park maintenance, fueling areas, fire department operations, etc. to identify activities which may impact stormwater quality.
- 1) Storage location of pesticides, herbicides and fertilizer,
 - 2) Application procedures.
- H) Safety equipment.
- 1) Safety Equipment shall be issued to all personnel responsible for operating the equipment and testing apparatus in the implementation of this program.
 - 2) Safety Procedures will be part of the training received on continuing basis for all maintenance personnel.
 - 3) All training will be done in accordance with the Village of Los Ranchos Employee Health and Safety Manual.
- I) Monitor for, report and remove illegal dumping and trash within the Village limits according to Ordinance.
- 1) Report illegal dumping activity to Code Enforcement Officer.
 - 2) Maintain records of illegal dumping activity by date, location, photographic record and action taken, follow up.
- J) Monitor for and report groundwater contamination within the Village limits according to Ordinance 211.

- 1) Report groundwater contamination activity to Code Enforcement Officer.
 - 2) Maintain records of groundwater contamination activity by date, location, photographic record and action taken, follow up.
- K) Procedures to properly dispose of waste removal from the Village including dredge spoil, accumulated sediments, floatables, and other debris.
- 1) The proper disposal of waste removal shall be done in accordance with the State of New Mexico Liquid Waste Disposal Laws and the Village ordinances.
 - 2) The Village will also require the services of the contracted waste disposal service to remove waste spills in public rights of way, parks, and other public lands.
 - 3) The Village will supervise liquid waste removal on private property as required by the state Environment Department Regulations and Village Ordinances governing such.
 - 4) All accumulated sediments collected from the storm sewer system and other areas of deposit shall be disposed of according to the State Environment Department regulations and Village ordinances governing such.
 - 5) All other debris that may accumulate along the roadway, in the storm sewer system in the inlets and storage systems and infiltrators will be disposed of according to the State Environment Department regulations and Village ordinances governing such.

SPECIFIC DUTIES – ANIMAL CONTROL OFFICER

- A) Monitor and implement domestic animal waste reduction program to minimize animal waste discharge to the drains and canals and groundwater contamination.
- 1) Issue warnings and citations for clean up of animal wastes.
 - 2) Maintain documentation by date, action taken and follow up.

- 8) Enforce the Village Animal control ordinance regulating the husbandry of livestock and keeping of other herd animals by requiring on site drainage plans, regular pick up and off site removal of animal wastes to a regulated composting plant or the Soils Amendment site.

- C) Parks and trails will be regulated for the pick-up of domestic dog and horse waste by the owners using the trails and parks.