



**NATIONAL POLLUTANT DISCHARGE ELIMINATION
SYSTEM (NPDES) PHASE II, REGULATED SMALL MUNICIPAL
SEPARATE STORM SEWER SYSTEMS (MS4's)**

U.S. ENV. PROT. AGENCY
2009 OCT 30 AM 10:46
CEPD-DIRECTOR OFFICE

PERMIT (NOTICE OF INTENT) APPLICATION

MUNICIPALITY OF SAN SEBASTIÁN

P.O. Box 1603
San Sebastián, P.R. 00685

U.S. ENVIRONMENTAL PROTECTION AGENCY – REGION II

CARIBBEAN ENVIRONMENTAL PROTECTION DIVISION

Centro Europa Building, Suite 417
1492 San Sebastián de León Avenue
San Juan, Puerto Rico 00907-4127

October 2009

TABLE OF CONTENT

| | | |
|--------|--|----|
| 1.0 | NPDES (Notice of Intent) Permit APPLICATION | 1 |
| 1.1 | Background | 1 |
| 1.2 | Municipality of San Sebastián | 1 |
| 1.3 | Activities Subject to NPDES Permit Applicability | 3 |
| 1.4 | Name, Mailing Address, and Location of Facility for which the Application is Submitted | 3 |
| 1.4.1 | NPDES (MS4s) Program Point of Contact of Municipality of San Sebastián | 3 |
| 1.5 | Standard Industrial Classification (SIC) Code | 3 |
| 1.6 | Operators Name, Mailing Address, Telephone, Ownership Status, and as Federal, State, Local, Tribal or Other Public Entity. | 3 |
| 1.7 | Permits or Construction Approvals | 3 |
| 1.7.1 | Municipal Permits or Construction Approvals applied under EPA | 3 |
| 1.7.2 | Federal Permits issued within the Municipality | 4 |
| 1.7.3 | State Permits or Construction Approvals for the Municipality | 6 |
| 1.8 | Storm Water Sewer Map | 7 |
| 1.9 | Description of the Municipal Stormwater Sewer System | 8 |
| 1.10 | Estimated Square Mileage Served by the MS4s System | 8 |
| 1.11 | Proposed Storm Water Management Plan | 8 |
| 1.11.1 | Proposed Work Plan | 10 |
| 1.12 | Description of the Best Management Practices to be Implemented for each MCM | 10 |
| 1.12.1 | Minimum Control Measure 1 – Public Education and Outreach | 10 |
| 1.12.2 | Minimum Control Measure 2 – Public Involvement and Participation | 10 |
| 1.12.3 | Minimum Control Measure 3 – Illicit Discharge Detection and Elimination | 11 |
| 1.12.4 | Minimum Control Measure 4 – Construction Site Storm Water Runoff Control | 11 |
| 1.12.5 | Minimum Control Measure 5 – Post-Construction Storm Water Management in Development and Redevelopment | 12 |
| 1.12.6 | Minimum Control Measure 6 – Pollution Prevention (Good Housekeeping for Municipal Operations | 13 |
| 1.13 | BMP Implementation Schedule | 13 |
| 1.14 | Person Responsible for Implementing or Coordinating the Applicant's Storm Water Management Program | 13 |
| 1.15 | Eligibility Criteria for Endanger Species, Historic Properties and Marine Fisheries | 13 |
| 1.15.1 | Eligibility Criteria for Endanger Species | 13 |
| 1.15.2 | Eligibility Criteria for Historic Properties | 14 |
| 1.16 | Signatories to Permit Application and reports | 15 |
| 1.16.1 | Certification | 15 |

APPENDICES

APPENDIX A – FIGURES

- FIGURE 1-2000 CENSUS OF AGUADILLA-ISABELA-SAN SEBASTIÁN, PR URBANIZED AREA MAP
- FIGURE 2-LOCATION MAP
- FIGURE 3-URBANIZED AREA WARDS
- FIGURE 4-SURFACE WATER BODIES WITHIN THE MUNICIPAL BOUNDARIES
- FIGURE 5A-BAHOMAMEY AND PUEBLO WARD MAP
- FIGURE 5B-SALTO WARD MAP

FIGURE 5C-HATO ARRIBA WARD MAP

FIGURE 5D-SONADOR WARD MAP

FIGURE 5E-CULEBRINAS WARD MAP

FIGURE 5F-ALTO SANO AND GUACIO WARDS MAP

FIGURE 5G-PIEDRAS BLANCAS, ENEAS, CIDRAL, MAGOS, JUNCAL, CALABAZAS AND
PERCHAS I WARDS MAP

FIGURE 5H-MIRABALES AND PERCHAS II WARDS MAP

FIGURE 5I- CIBAO, GUAJATACA, AIBONITO, HOYA MALA AND ROBLES WARDS MAP

1.0 NPDES (NOTICE OF INTENT) PERMIT APPLICATION

1.1 BACKGROUND

In 1972, Congress amended the Federal Water Pollution Control Act, commonly referred as the Clean water Act (CWA) to prohibit the discharge of any pollutant to waters of the United States from point sources unless the discharge is authorized by a National Pollutant Discharge Elimination System (NPDES) permit. Initial efforts under the NPDES program focused on reducing pollutants in discharges of industrial process wastewater and municipal sewage. As pollution control measures have been implemented, it has become evident that diffuse sources or non-point sources are also contributors of water quality degradation. In 1990, the US Environmental Protection Agency (USEPA) promulgated rules establishing Phase I of the NPDES storm water program. The Phase I program for MS4s requires operators of "medium" and "large" MS4s, that is, those that generally serve populations of 100,000 or greater, to implement a storm water management program as a means to control polluted discharges from these MS4s. USEPA published the Storm Water Phase II Rule on December 9, 1999. Since the USEPA has not delegated the NPDES permitting program to the Puerto Rico Environmental Quality Board (PREQB). Thus, on November 6, 2006 USEPA Region 2 issued the National Pollutant Discharge Elimination System General Permit for Discharges from Small Municipal Separate Storm Sewer Systems (MS4 GP PRR040000) for Puerto Rico.

Based on the 2000 Census, the USEPA published the Aguadilla, Isabela, San Sebastián, PR Urbanized Area Storm Water Map; which updates the Appendix 6 and 7 of the Preamble to the Final Phase II Regulations. As such, the Municipality of San Sebastián is required to submit a Notice of Intent (NOI) to seek coverage of the said permit¹.

Twenty three (23) of the twenty four (24) wards of the of Municipality of San Sebastián fall within an Urbanized Area (See Figure 1 of Appendix A) as defined in Section 9 of the National Pollutant Discharge Elimination System General Permit for Discharges from Small Municipal Separate Storm Sewer Systems (PRR040000).

1.2 MUNICIPALITY OF SAN SEBASTIÁN

The Municipality of San Sebastián is positioned in the inner part of the Northwest of Puerto Rico. It is located North of Isabela, Camuy and Quebradillas; East of Lares; West of Moca and Añasco; and South of Las Marias (see Figure 2 of Appendix A). Its surface area includes a total of 137.8 km² (53 mi²) and has a population of 44,204 inhabitants², according to the 2000 Census. As mentioned earlier, 23 of the 24 wards of the of Municipality of San Sebastián falls within the Urbanized Area, as defined in Section 9 of the National Pollutant Discharge Elimination System General Permit for Discharges from Small Municipal Separate Storm Sewer Systems (PRR040000).

¹ National Pollutant Discharge Elimination System Regulations of Water Pollution Control Program Addressing Storm Water Discharge Final Rule - Federal Register Vol. 64 Num. 23; pages 60721-61851 (December 8, 1999).

² Based Census 2000 Population, Housing Units, Area, and Density Comparison Table, San Sebastián, Puerto Rico.
http://factfinder.census.gov/servlet/GCTTable?_bm=y&-geo_id=04000US72&-_box_head_nbr=GCT-PH1&-ds_name=DEC_2000_SF1_U&-format=ST-2

- Alto Sano
- Aibonito
- Bahomamey
- Calabazas
- Cibao
- Cidral
- Culebrinas
- Eneas
- Guacio
- Guajataca
- Guatemala
- Hato Arriba
- Hoya Mala
- Juncal
- Mirabales
- Perchas I
- Perchas II
- Piedras Blancas
- Pozas
- Robles
- Salto
- San Sebastián Pueblo
- Sonador

San Sebastián has various roadways that allow the access to other municipalities in the region. The main access to San Sebastián is through State Roads PR 111, PR 119 and PR 109, which are connected as well to others of secondary roadways that allow an intermunicipal mobility.

The Municipality of San Sebastián has many surface water resources of importance. Figure 4 of Appendix A shows the superficial water resources of the Municipality of San Sebastián. The following rivers conforms the hydrographic system of San Sebastián:

- The Culebrinas River, that is born Espino Ward of Lares and crosses the municipalities of San Sebastián and Moca.
- The Guatemala River, which originates in the Aibonito Ward, crossing the Guatemala and Bahomamey Wards and ending at the Culebrinas River.
- The Guajataca River that originates in the Buenos Aires Ward (Lares) and crosses Cibao and Guajataca Wards.
- The Juncal River, that originates in Lares, flows to the South and ends at the Rio Grande de Añasco River.
- The Sonador River, originates in Calabazas Ward, flows towards the West and end in the Culebrinas River.
- The Guacio River is born in Guilarte (Adjuntas), winding by Lares and passing to the south of San Sebastián, following its course until ending at beaches of Añasco and Mayagüez, where it is known as Rio Grande de Añasco River.

At Lago Guajataca, is located in the North of the municipality and separates the Municipality of Quebradillas. This man-made reservoir is used for public water supply

The municipal operations are mostly categorized as administrative and community service. Some of the mayor responsibilities of the Municipality of San Sebastián are monitor butget, draft local legislation, develop local policy, and execute legally mandated government activities design to provide services to its residents. The most important municipal operations include the creation of local policies, strategies and plans aimed to develop our future growth; design, organize and develop projects, programs and activities for the general welfare and public service; construct, improve, repair, rebuild and/or rehabilitate facilities for the better service of their communities; organize and supervise the Municipal Police Force; establish programs to prevent incidents, including assisting the community in emergencies or natural disasters, catastrophic accidents or disasters and civil protection in general; protect and preserve our resources and promote the protection of health and safety of our citizens by giving maintenance to all the municipal facilities, regulate and administer the

program concerning stray domestic animals; provide services and programs for the collection of waste and provide ongoing maintenance to the storm sewer system.

1.3 ACTIVITIES SUBJECT TO NPDES PERMIT APPLICABILITY

Municipal separate storm water sewer system located in San Sebastián, Puerto Rico

1.4 NAME, MAILING ADDRESS, AND LOCATION OF FACILITY FOR WHICH THE APPLICATION IS SUBMITTED

Municipio de San Sebastián
P.O. Box 1603
San Sebastián, P.R. 00685

1.4.1 NPDES (MS4s) Program Point of Contact of Municipality of San Sebastián

Municipio de San Sebastián
Attn: Ing. Luis Albaladejo
P.O. Box 1603
San Sebastián, P.R. 00685
Telephone: (787) 896-1550
Fax: (787) 896-8363

1.5 STANDARD INDUSTRIAL CLASSIFICATION (SIC) CODE

Standard Industrial Classification (SIC) Code for the Municipality of San Sebastián is 9199.

1.6 OPERATORS NAME, MAILING ADDRESS, TELEPHONE, OWNERSHIP STATUS, AND AS FEDERAL, STATE, LOCAL, TRIBAL OR OTHER PUBLIC ENTITY.

Municipio de San Sebastián
P.O. Box 1603
San Sebastián, P.R. 00685

1.7 PERMITS OR CONSTRUCTION APPROVALS

1.7.1 MUNICIPAL PERMITS OR CONSTRUCTION APPROVALS APPLIED UNDER EPA

1.7.1.1 Resource Conservation and Recovery Act

None

1.7.1.2 Underground Injection Control

Information Not Available

1.7.1.3 NPDES Program under the Clean Water Act

| NUMBER | OWNER/OPERATOR NAME | APPLICATION TYPE | START COVERAGE |
|-----------|---|---------------------|----------------|
| PRR10B082 | Municipality of San Sebastián- Pabellon de Balonmano | NOI | 07/07/2009 |

1.7.1.4 Nonattainment Program under the Clean Air Act

None

**1.7.1.5 National Emissions Standards for Hazardous Air Pollutants
Preconstruction Approvals under the Clean Air Act**

None

**1.7.1.6 Ocean Dumping Permits under the Marine Protection Research and
Sanctuaries Act**

None

1.7.1.7 Dredge or Fill Permits under Section 404 of the Clean Water Act

None

1.7.2 FEDERAL PERMITS ISSUED WITHIN THE MUNICIPALITY**1.7.2.1 Resource Conservation and Recovery Act**

| NUMBER | OWNER/OPERATOR NAME | APPLICATION TYPE | LAST UPDATED |
|--------------|-----------------------------------|------------------|--------------|
| PRD980650709 | AVON | LQG | 06/06/2007 |
| PRR000003418 | ESSO Standard Oil Co PR 3P-331 | CESQG | 06/06/2007 |
| PRR000003376 | ESSO Standard Oil Co PR CO-332 | CESQG | 06/06/2007 |

Source: RCRA Info http://oaspub.epa.gov/enviro/ef_home3.html?p_zipcode=00785&p_type=zip&x=3&y=2

1.7.2.2 Underground Injection Control

Information Not Available

1.7.2.3 NPDES Program under the Clean Water Act

| NPDES NUMBER | FACILITY NAME | PERMIT ISSUED DATE | PERMIT EXPIRED DATE | SIC DESCRIPTION |
|--------------|--------------------------------|--------------------|---------------------|---------------------------------|
| PRP080030 | AVON Lomalinda Inc. | | | Non Classifiable Establishments |
| PR0025143 | Esc. Aibonito Beltran | 05-15-05 | 10-31-2010 | Elementary & Secondary School |
| PR0024317 | Hoyamala Ward Secondary School | 08-31-2001 | 10-31-2006 | Elementary & Secondary School |
| PR0022926 | PRASA Perchas WTP | 06-07-2005 | 07-31-2010 | Water Supply |
| PR0023981 | PRASA San Sebastián WTP | 05-17-2005 | 06-30-2010 | Water Supply |
| PR0025551 | PRASA San Sebastián WWTP | 10-20-2003 | 11-30-2008 | Sewerage System |
| PR0020851 | San Sebastián STP | 6-26-2003 | 07-31-2008 | Sewerage System |

Source: <http://cfpub.epa.gov/npdes/stormwater/noi/noisearch.cfm>

1.7.2.4 Nonattainment Program under the Clean Air Act

None

1.7.2.5 National Emissions Standards for Hazardous Air Pollutants Preconstruction Approvals under the Clean Air Act

| NUMBER | OWNER/OPERATOR NAME | APPLICATION TYPE | LAST UPDATED |
|------------|---------------------|------------------|--------------|
| 7213100003 | Angelo's Tuxedos | Air Minor | 09-01-2004 |
| 7213100001 | Central La Plata | Air Minor | 4-20-2004 |

Data Source AIRS/AFS: http://oaspub.epa.gov/enviro/ef_home2.air

1.7.2.6 Ocean Dumping Permits under the Marine Protection Research and Sanctuaries Act

None

1.7.2.7 Dredge or Fill Permits under Section 404 of the Clean Water Act

None

1.7.3 STATE PERMITS OR CONSTRUCTION APPROVALS FOR THE MUNICIPALITY**1.7.3.1 Puerto Rico Environmental Quality Board**

| NUMBER | OWNER/OPERATOR NAME | APPLICATION TYPE |
|-----------------------------|-------------------------------|--|
| ET-67-0011 | Municipality of San Sebastián | Transfer Syation Permit |
| SR-67-0185 | Municipality of San Sebastián | Recollection and Transportation Permit |
| PGC-09-67-0020-RA | Municipality of San Sebastián | Consolidated General Permit |
| PGC-08-67-0036-RM | Municipality of San Sebastián | Consolidated General Permit |
| PFE-LC-02-67-0606-0075-II-0 | Municipality of San Sebastián | Electricity Generator Emission Permit |

Source: Municipality of San Sebastián

1.7.3.2 Puerto Rico Department of Natural Resources and the Environment

| NUMBER | APPLICATION TYPE | OWNER/OPERATOR NAME | APPROVAL DATE |
|-----------------------------|---------------------------------|---------------------|---------------|
| OCT-PIA03-MA-00079-11082009 | Incidental Activity Permit | Balonmano Pavilion | 09/01/2009 |
| OMA-PMA02-SJ-02237-14082009 | Cut, Trim and Transplant Permit | Balonmano Pavilion | 09/02/2009 |

Source: Municipality of San Sebastián

1.7.3.3 Other State Agencies

| NUMBER | APPLICATION TYPE | AGENCY | APPROVAL DATE |
|-------------------|---|----------------------------|---------------|
| ADG-06-001 | Residual Water Transportation | Aqueduct & Sewer Authority | 03/20/2009 |
| 08CX9-00000-05480 | Construction Permit Basketball court | ARPE | 07/15/2009 |
| 08CX9-00000-00731 | Construction Permit "Plaza Cultural" | ARPE | 09/10/2008 |
| 08CX9-00000-02172 | Construction Permit Balonmano Pabillion | ARPE | 10/2008 |

Source: Municipality of San Sebastián

1.8 STORM WATER SEWER MAP

Included in Figure 3 of Appendix A is a map depicting the geographical extension of the Municipality of San Sebastián and the urbanized wards. Figure 4 illustrates the surface water bodies within the municipal boundaries (lakes, rivers, creeks, ocean). Figure 5 illustrates the municipal owned and operated roads, water filtration plants owned and operated by the Puerto Rico Aqueduct and Sewer Authority (PRASA), waste water treatment plants owned and operated by the Puerto Rico Aqueduct and Sewer Authority, hazardous waste treatment, storage and disposal facilities, non-hazardous solid waste treatment, storage and disposal facilities, NPDES permitted industrial facilities, drinking, irrigation or commercial groundwater wells.

At the present time, the municipality lacks the required information and resources needed to develop a detail storm sewer map for the municipal operated MS4, as required by the MS4 GP PRR40000. As part of the implementation phase of the NPDES it is the intention of the Municipality of San Sebastián to develop such map.

It is anticipated that at a minimum the map will include information related to:

- Municipal Storm Sewer System, including conveyance or system of conveyances and outfall locations.
- Municipal Owned and Operated Roads Storm Sewer Systems interconnected with the Municipal Storm Sewer System;
- State Owned and Operated Roads Storm Sewer Systems interconnected with the Municipal Storm Sewer System;
- Surface water bodies (lakes, rivers, creeks, ocean);
- Water Filtration Plants Owned and Operated by the Puerto Rico Aqueduct and Sewer Authority (PRASA), including intakes and outfalls;
- Waste Water Treatment Plants Owned and Operated by the Puerto Rico Aqueduct and Sewer Authority, including outfalls;
- Hazardous Waste Treatment, Storage and Disposal Facilities;
- Non-Hazardous Solid Waste Treatment, Storage and Disposal Facilities;
- NPDES permitted industrial facilities interconnected with the Municipal Storm Sewer System;
- NPDES permitted industrial facilities discharging to a surface water body;
- Commercial Facilities (Regulated under the PRASA Pretreatment Program) interconnected with the Municipal Storm Sewer System or discharging to a surface water body;

- Location of Drinking, Irrigation or Commercial Groundwater Wells;
- Location of Underground Injection Systems (including residential septic tanks)
- Location of Illegal/Illicit Discharges to MS-4
- Location of Gas Stations

1.9 DESCRIPTION OF THE MUNICIPAL STORMWATER SEWER SYSTEM

The Municipality of San Sebastián Storm Water Sewer System (MS4s) in the urban areas, in general, consist of a series of catch basins, typically located within the right-of-way of municipal and state roads, interconnected by underground concrete or PVC pipes, which normally discharge to the Culebrinas River, which eventually discharge to the Atlantic Ocean. In the rural areas, the Municipal MS4 system typically consists of a series of interconnected open channel culverts, which run parallel to municipal and state roads, and usually discharge to a surface water body. Interconnected to the Municipal MS4s system are the storm water sewer systems owned and operated by the Puerto Rico Department of Public Works and Transportation and the Puerto Rico Highway and Transportation Authority. Also, interconnected to the Municipal MS4s systems are the discharges from NPDES (Storm water) permitted facilities and PRASA Pre-treatment permitted industrial and commercial facilities. As the Municipality of San Sebastián implements the proposed Storm Management Plan a more accurate description (capacity, operation, etc.) of the Municipal MS4s system can be provided.

1.10 ESTIMATED SQUARE MILEAGE SERVED BY THE MS4S SYSTEM

The estimated square mileage served by the MS4s System is 102.95 Km² (39.75 mi²). However, it must be noted that a more accurate estimate can be provided as the Municipality implements the proposed Storm Management Plan.

1.11 PROPOSED STORM WATER MANAGEMENT PLAN

The Municipality of San Sebastián has many regulatory and public responsibilities. One of these is the development of a Comprehensive Storm Water Management Plan (SWMP). The SWMP was developed to meet the regulatory requirements of the National Pollutant Discharge Elimination System (NPDES) Phase II Rule and to assist the municipality in maintaining and improving the municipality drainage facilities which include pipelines, structures, basins, ditches, swales, ponds, under drains and drainage wells, to ensure that they perform to design capacity and that all receiving bodies meet state and federal standards for water quality. It will also be an important tool for use in the day-to-day operations and as a public reference document. Along with regulatory issues, this plan will address protection of property from flooding and erosion, identifies health and safety issues related to water resources, and will make recommendations for the preservation of environmental and aesthetic benefits to the community.

Through the use of field observations, results of past and future studies, hydrologic/hydraulic computer modeling, and input from Municipality staff and a proposed Citizens Advisory Committee, the plan will identify existing problems and potential future problems within the municipality. A combination of regulatory requirements, public education, increased maintenance activities, and capital improvements will be recommended to solve identified problems. The major plan elements include the following:

- Development of a proposed storm water ordinance that, among other things, establishes minimum requirements for new development and redevelopment, prohibits illicit discharges into surface waters, and requires maintenance of privately owned storm water facilities.
- Development of public education opportunities to inform the community of water quality issues, and, specifically, the new ordinance and its requirements.
- Develop a Storm Water Assistance Program, to assist businesses and persons in their efforts to comply with NPDES storm water regulations and will educate citizens about storm water runoff and associated concerns.
- Hydrologic and hydraulic computer modeling analysis of the major drainage basins in the Municipality to simulate existing flows, project future flows, and evaluate system requirements.
- Analysis of localized flooding and water quality problems and solutions, and development of a prioritized list of recommended drainage system improvements.
- Development of a Capital Improvements Program.
- Development of a Maintenance and Operations Program.
- Development of a Public Education.
- Development of a Compliance Management Program to among other things, monitor illicit discharges into surface waters, storm water discharges associated with industrial activity and construction sites.
- Description of the overall program costs.
- Analysis of funding options and the creation of a storm water utility.

The Stormwater Management Plan will be develop, under the direction of the Planning Office. The SWMP will focus initially on community education, dissemination of storm water pollution prevention information, system inventory and analysis of drainage and water quality issues followed by a facilities maintenance program, and a comprehensive storm and surface water code and policy. As envisioned, the SWMP will address the drainage network base map, hydrologic and hydraulic analysis and modeling, if required, for the principal surface water bodies (creeks and rivers), environmental and water quality issues, capital improvement program, storm water facilities maintenance program and a comprehensive Storm Water Management Code and Policy.

Semiannual meetings will be held to update all partnership members and Citizens Advisory Committee on the status of the planned activities. A written annual report will be prepared, submitted to USEPA and distributed each year.

1.11.1 PROPOSED WORK PLAN

Under the direction of the Planning Office, a work plan will be developed at the beginning of each year based on priorities. Semiannual meetings will be held to update all partnership members on the status of the planned activities. A written annual report will be prepared and distributed at the end of each year. The anticipated activities are currently divided into six major tasks:

1.12 DESCRIPTION OF THE BEST MANAGEMENT PRACTICES TO BE IMPLEMENTED FOR EACH MCM

Next is a description of the preliminary Best Management Practices (BMPs) that the Municipality of San Sebastián is planning to undertake to meet the requirements of the permit.

1.12.1 MINIMUM CONTROL MEASURE 1 – PUBLIC EDUCATION AND OUTREACH

The Municipality of San Sebastián is planning to implement a public education program that would include the distribution of educational materials within the general community regarding the potential impacts of storm water discharges on water bodies. It would also include the measures that the community may take to reduce pollutants in storm water. The program will include the preparation and distribution of written materials as well as the coordination of public meetings. The following BMP's will be implemented:

- Storm Water-Related Public Service Announcements
- Development and Distribution of Storm Water-Related Materials
- Storm Water Web Page
- Storm Water Pamphlets, Booklets, and Flyers

1.12.2 MINIMUM CONTROL MEASURE 2 – Public Involvement and Participation

The Municipality of San Sebastián is planning to implement a public involvement and participation program. Public participation meetings are planned to obtain input from the community. Functionaries responsible for the program would coordinate the meetings to assure the participation of the community. The following BMP's will be implemented:

- Storm Drain Stenciling Program
- Annual Cleanup
- Public Involvement Program
- Community Hotline

1.12.3 MINIMUM CONTROL MEASURE 3 – Illicit Discharge Detection and Elimination

To meet the requirements of this measurement the Municipality of San Sebastián is planning to develop a map of the storm sewer system showing the location of all outfalls, inflows, manholes, and waters of the United States that receive discharges from the outfalls. The Municipality of San Sebastián is planning to implement a program for the detection of possible illegal non-storm water discharges into the system. The program may include visual assessments, connectivity testing, dye testing and/or smoke tests. Allowable discharges, as included in Section 1.4 of the permit, will be addressed as part of this control measure only if the Municipality of San Sebastián identifies them as significant contributors of pollutants to the small MS4. As part of the SWMP development the Municipality of San Sebastián will list occasional incidental non-stormwater discharges that will not be addressed as illicit discharges such as non-commercial or charity car washes. A prohibition of any non-storm water discharge that it is determined to be contributing significant amounts of pollutants to the MS4 would be included in the SWMP. The following BMP's will be implemented:

- Storm Sewer System Map - Develop a storm sewer system map.
- Implement Regulations to Enforce Nonstorm Water Discharges
- Educational Outreach
- Program to Detect, Identify, and Eliminate Illicit Discharges
- Program to Detect, Identify, and Eliminate Illegal Dumping
- Program to Detect, Identify, and Eliminate Wastewater Connections to the Storm Drain System
- Program to Detect and Eliminate Sanitary Sewer Overflows -
- Program to Detect and Eliminate Failing Septic Systems

1.12.4 MINIMUM CONTROL MEASURE4 – Construction Site Storm Water Runoff Control

The Municipality of San Sebastián is planning to develop, implement and enforce a program to reduce pollutants in any storm water runoff to their MS4 from construction activities. For construction activities covering one acre or more of land or covering less than one acre that are part of a larger common plan, the Municipality of San Sebastián will require that the construction activity be implemented in accordance to the NPDES General Permit for Storm Water Discharges from Construction Activities issued by the EPA in July 1,2003. To ensure that this requirement is met the Municipality of San Sebastián will develop an administrative procedure or guideline to assure that the requirement for the request of compliance with the NPDES General Permit for construction activities is met.

By implementing the requirement of meeting the conditions of the Construction Activities General Permit Municipality of San Sebastián will assure that adequate erosion and sedimentation controls are implemented and inspected during the project construction phase. The following BMP's will be implemented:

- Ordinances or Other Regulatory Mechanisms
- General Construction Site Waste Controls
- Information Submitted by the Public
- Construction Site Inspection and Enforcement

1.12.5 MINIMUM CONTROL MEASURE 5 – Post-Construction Storm Water Management in Development and Redevelopment

The Municipality of San Sebastián is planning to develop a post construction runoff control management program for areas within the Municipality that would undergo new development or redevelopment. The program would be aimed to reducing pollutants in post construction runoff from these areas. BMP's that may be considered during the development of the SWMP could include:

- Development of administrative procedures and ordinances that require the implementation of post-construction runoff control measures
- Development of administrative procedures or guidelines to ensure the inspection and maintenance of the runoff control measures
- Development of administrative procedures or guidelines to ensure that new development or redevelopment plans are reviewed and verified for the inclusion of post-construction runoff control measures
- Development of administrative procedures or guidelines to ensure that one or more of the following general BMPs are included in the design plans of any new or redeveloped project: innovative BMPs, infiltration systems, filtration systems or retention/detention ponds. The Best Management Practices are

Structural

- (a) Porous Pavement Program
- (b) Vegetative Practices (Stormwater Wetland Program)
- (c) Vegetative Practices (Grassed Swale Program)
- (d) Runoff Pretreatment Practices

Nonstructural

- (a) Develop a regional growth planning process to contain sprawl development and direct new growth into previously developed areas, discouraging excessive low-density development.
- (b) Develop green parking techniques to reduce the contribution of parking lots to the total impervious and, consequently, the amount of storm water runoff. All of the green parking techniques shall be applied in new developments and some redevelopment projects, depending on the extent and parameters of the project.
- (c) Develop an alternative paver program that can replace asphalt and concrete and can be used for driveways, parking lots, and walkways. Alternative pavers shall replace impervious surfaces, creating less storm water runoff.

Inspection and Maintenance Program

- (a) Develop an inspection and repair program to maintain the effectiveness of post-construction storm water control BMPs.

1.12.6 MINIMUM CONTROL MEASURE 6 – Pollution Prevention (Good Housekeeping for Municipal Operations)

The Municipality of San Sebastián is planning to develop and implement a pollution prevention/good housekeeping program to minimize or to reduce potential pollutants from reaching the storm sewer system. The program will consist of the following BMP's:

a) Source Controls

Pet Waste Collection Program
 Vehicle Maintenance Program
 Vehicle Washing Program
 Parking Lot and Street Cleaning Program
 Roadway and Bridge Maintenance Program
 Storm Drain System Cleaning Program

b) Materials Management

Alternative Products -
 Hazardous Materials Storage Program
 Spill Response and Prevention Program
 Used Oil Recycling Program
 Materials Management Program

1.13 BMP IMPLEMENTATION SCHEDULE

BMP Implementation Schedule and MCM 1 Performance Measures will begin in 2009 and ends in 2011. A detail implementation schedule will be included in the Stormwater Management Plan.

1.14 PERSON RESPONSIBLE FOR IMPLEMENTING OR COORDINATING THE APPLICANT'S STORM WATER MANAGEMENT PROGRAM

Municipio de San Sebastián
 Attn: Ing. Luis Albaladejo
 P.O. Box 1603
 San Sebastián, P.R. 00685
 Telephone: (787) 896-1550
 Fax: (787) 896-8363

1.15 ELIGIBILITY CRITERIA FOR ENDANGER SPECIES, HISTORIC PROPERTIES AND MARINE FISHERIES

1.15.1 ELIGIBILITY CRITERIA FOR ENDANGER SPECIES

In this section is discussed the eligibility and screening procedures relating to species and critical habitat designated under the Endanger Species Act (ESA). The MS4 operated by the Municipality of San Sebastián meets **Criterion E: Storm water discharges associated with**

industrial activity and allowable non-storm water discharges are not likely to adversely affect any federally listed endangered and threatened (listed) species or designated critical habitat.

The threatened and endangered species that have been reported for the Municipality of San Sebastián are identified in the table below:

| SCIENTIFIC NAME | COMMON SPANISH NAME | GROUP | STATUS* | DISTRIBUTION |
|---|---------------------|---------|---------|---|
| <i>Calyptronoma rivalis</i> | Palma Manaca | Plant | T | Quebrada Collazo |
| <i>Patagioenas (Columba) inorata wetmorei</i> | Paloma sabanera | Bird | E | Lower Montane Forest and Riparian Habitats |
| <i>Epicrates inornatus</i> | Boa de PR | Reptile | E | Forested Volcanic and Limestone (Karst) Hills |
| <i>Thelypteris verecunda</i> | No Common Name | Plant | E | Cidral Ward |
| E= Endanger; T=Threatened; CH=Critical Habitat, | | | | |

This information was reviewed with the official List of Endangered Species of the US Fish & Wildlife Service³. The Best Management Practices proposed to control storm water pollutants in the MS4 operated by the Municipality of San Sebastián will not affect these species or their habitat.

1.15.2 ELIGIBILITY CRITERIA FOR HISTORIC PROPERTIES

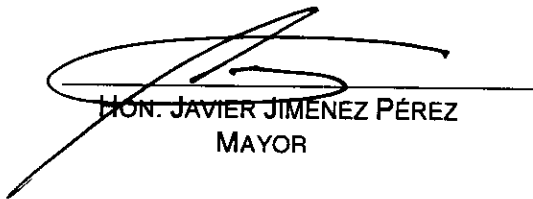
In this section is discussed the eligibility and screening procedures relating to historic properties and National Historic Preservation Act. The MS4 operated by the Municipality of San Sebastián meets **Criterion B: Stormwater discharges related activities (i.e. construction and/or installation of stormwater best Management practices that involve subsurface disturbance) would not affect historic properties.**

³ <http://www.fws.gov/caribbean/es/PDF/Map.pdf>

1.16 SIGNATORIES TO PERMIT APPLICATION AND REPORTS

1.16.1 CERTIFICATION

I certify under penalty of law that this document and all attachments were prepared under my direction or supervision in accordance with a system designated to assure that qualified personnel properly gather and evaluate the information submitted. Based on my inquiry of the person or persons who managed the system, or those persons directly responsible for gathering the information, the information submitted is, to the best of my knowledge and belief, true, accurate, and complete. I am aware that there are significant penalties for submitting false information, including the possibility of fine and imprisonment for knowing violations.



HON. JAVIER JIMÉNEZ PÉREZ
MAYOR

OCTOBER 20, 2009
DATE

APPENDIX A

FIGURES



Figure 1 - Urbanized Areas Map
 Notice of Intent, NPDES MS4 PRR40000, Municipality of San Sebastian

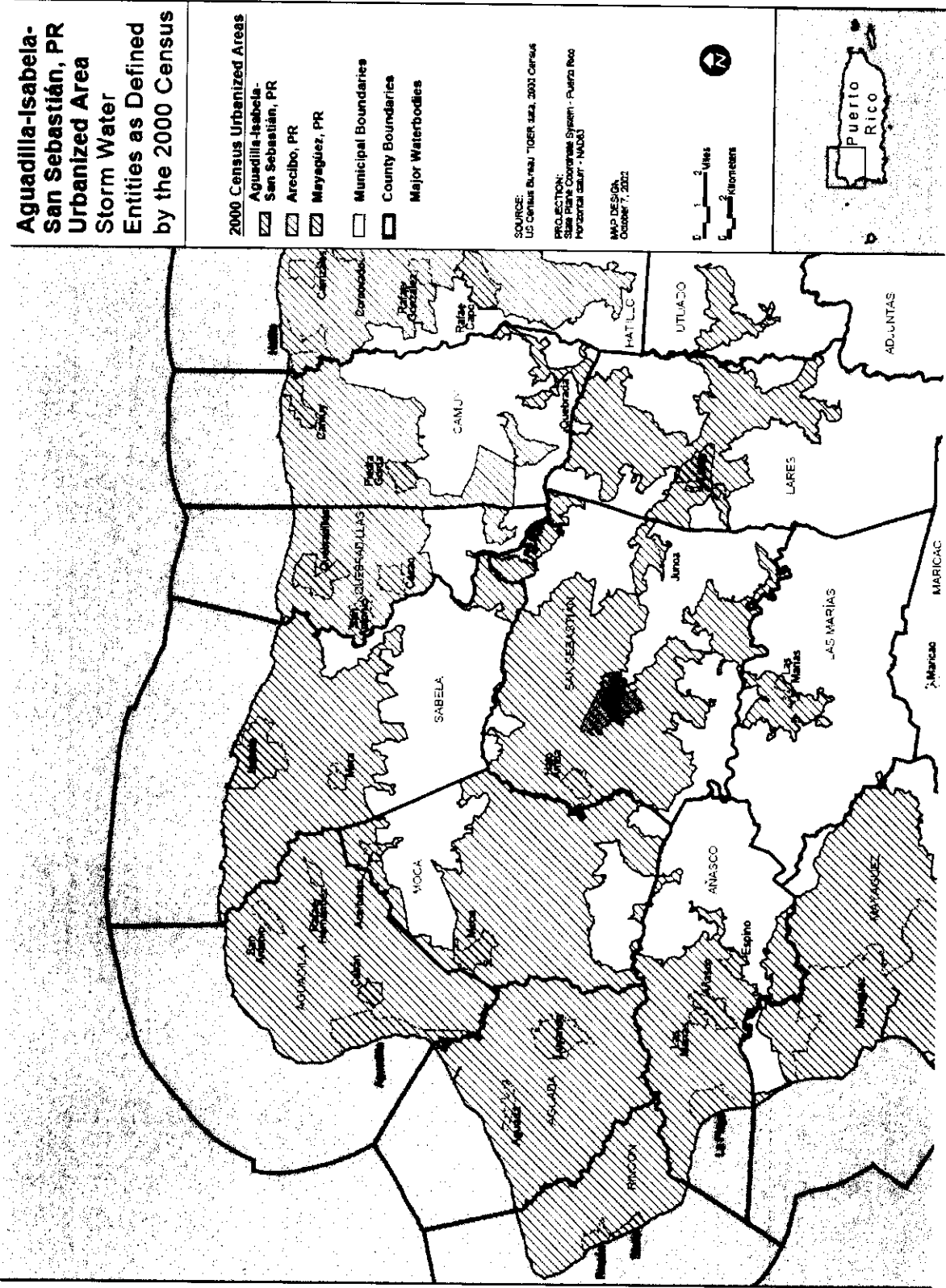
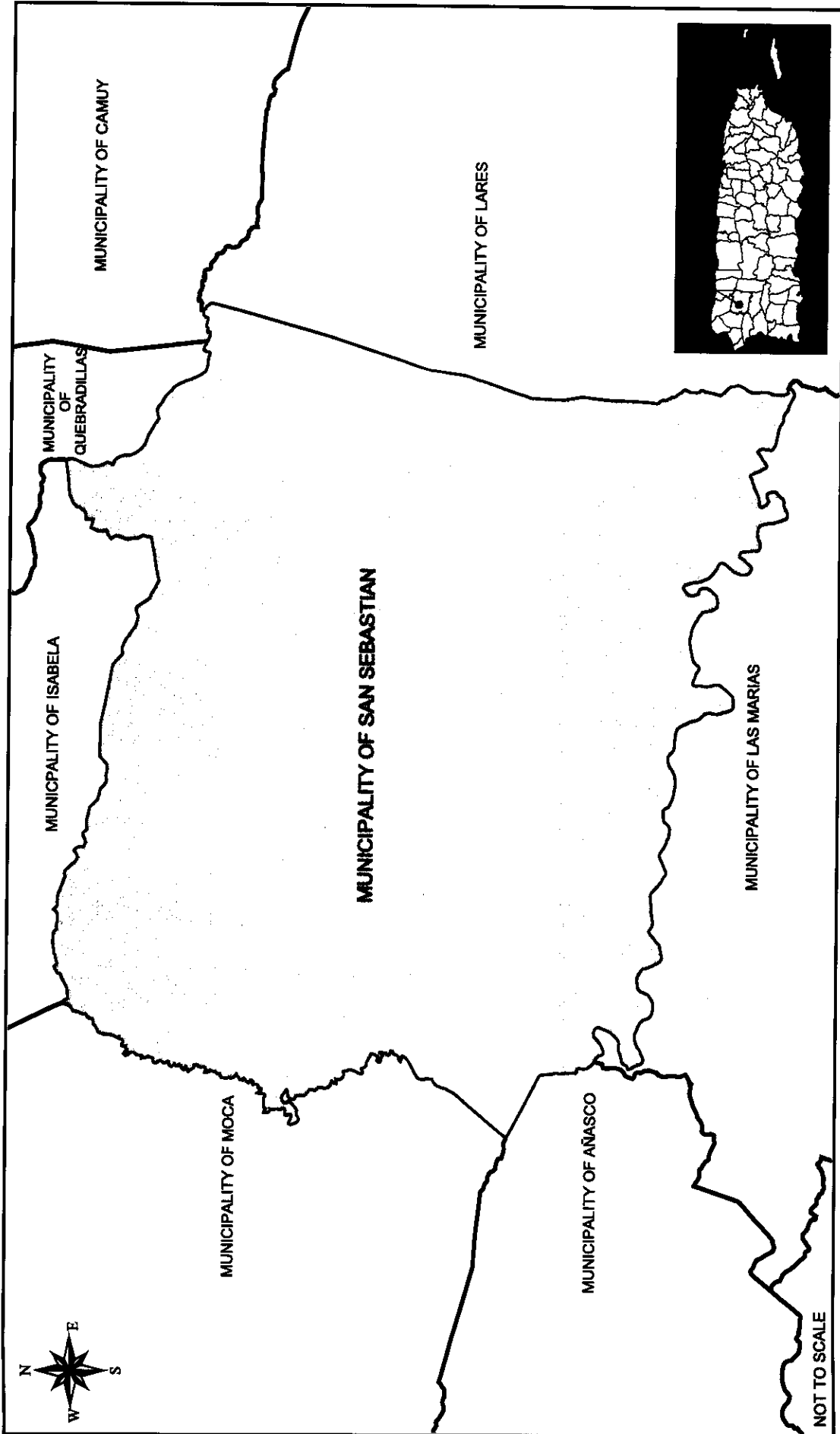


Figure 2 - Location Map
Notice of Intent, NPDES MS4 PRR40000, Municipality of San Sebastian



Legend:

- Municipio de San Sebastian
- Municipios de Puerto Rico



Figure 5A - GIS Maps - Bahomamey & Pueblo Wards
 Notice of Intent, NPDES MS4 PRR40000, Municipality of San Sebastian

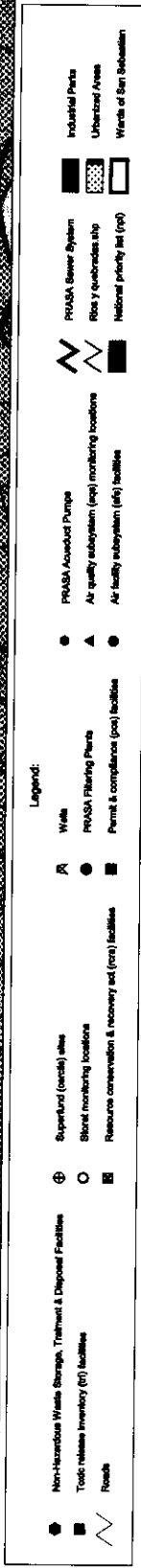
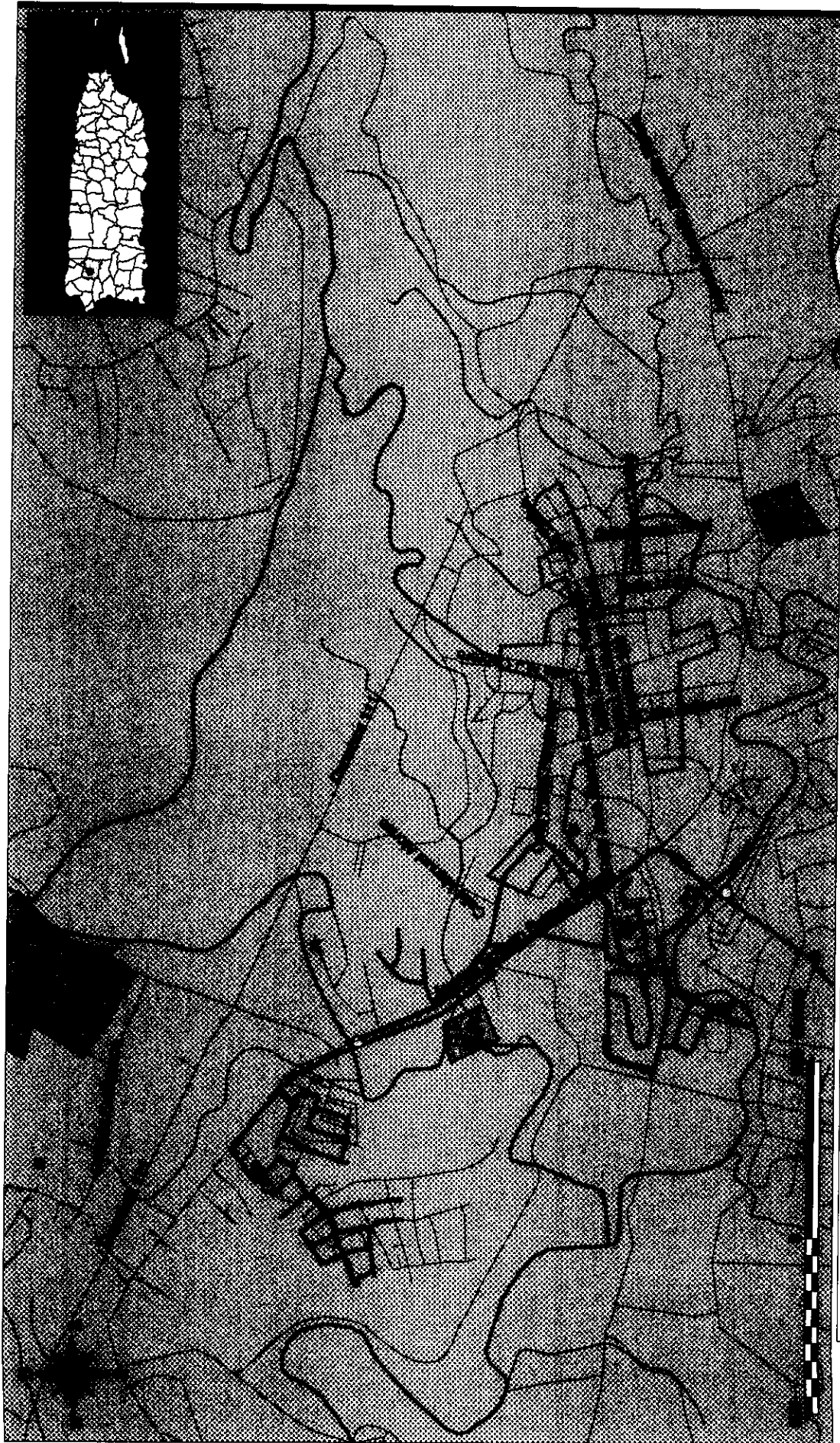


Figure 5B - GIS Map - Salto Ward
 Notice of Intent, NPDES MS4 PRR40000, Municipality of San Sebastian

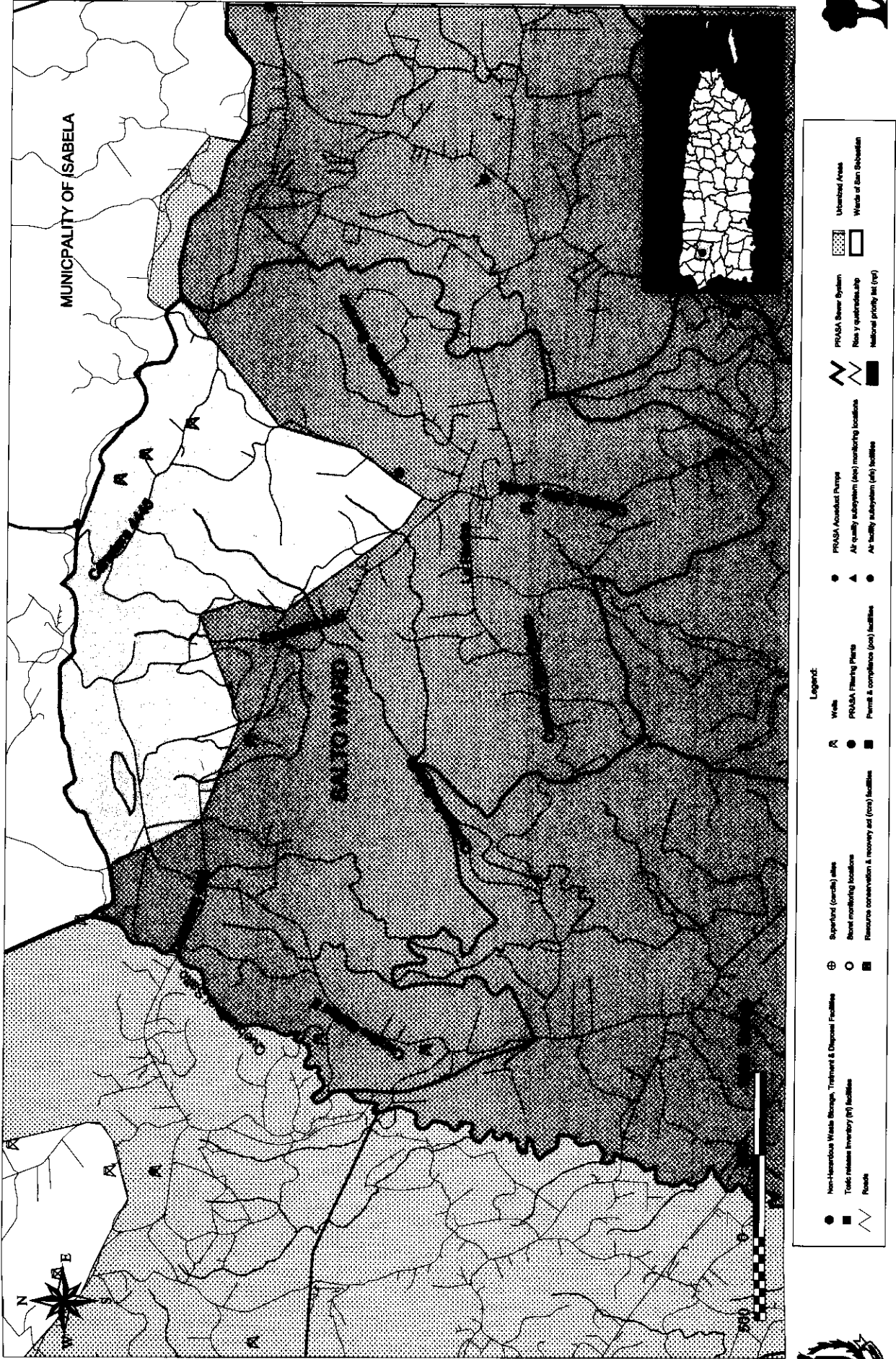
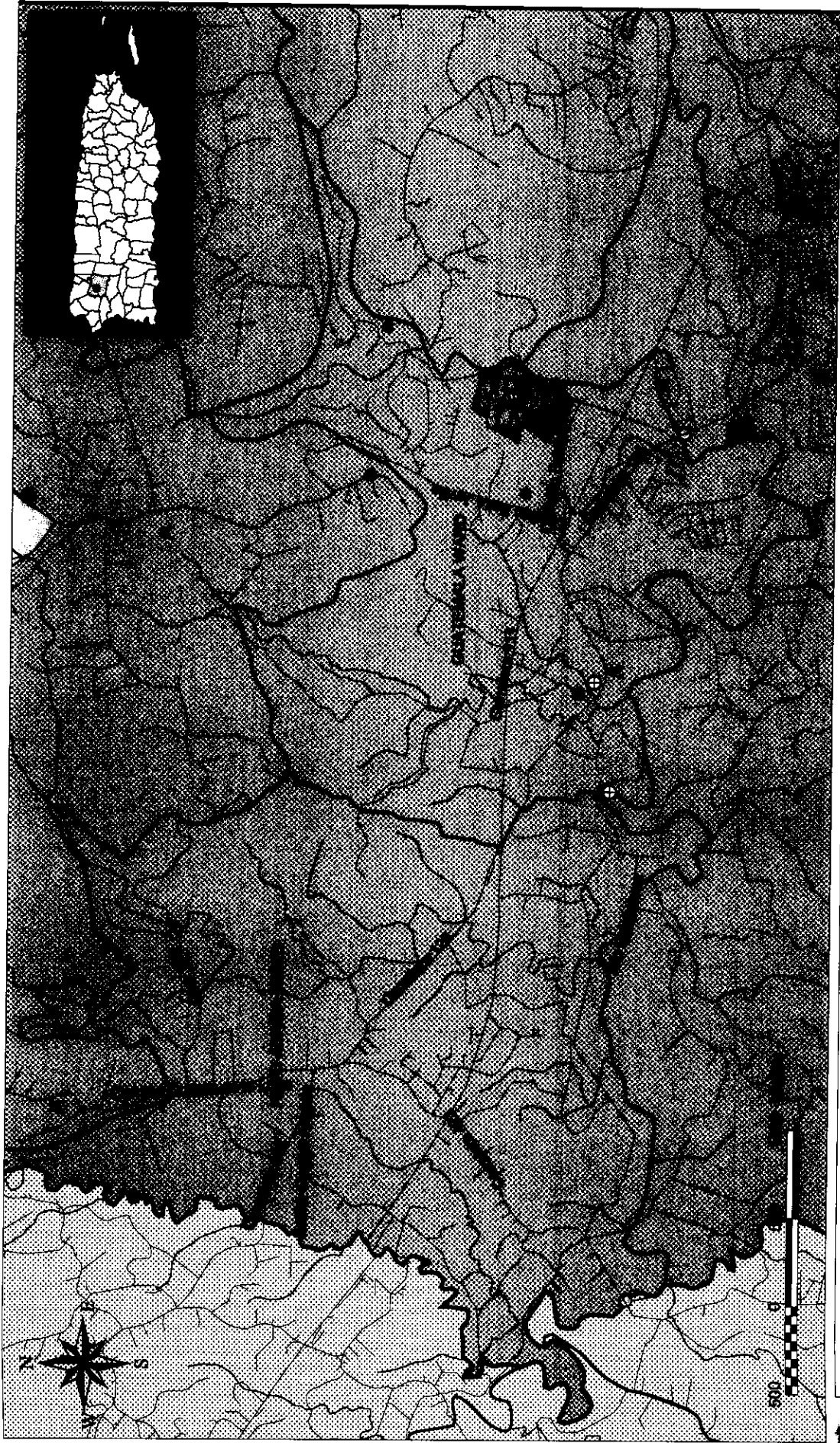


Figure 5C - GIS Map - Hato Arriba & Guatemala Wards
 Notice of Intent, NPDES MS4 PRR40000, Municipality of San Sebastian

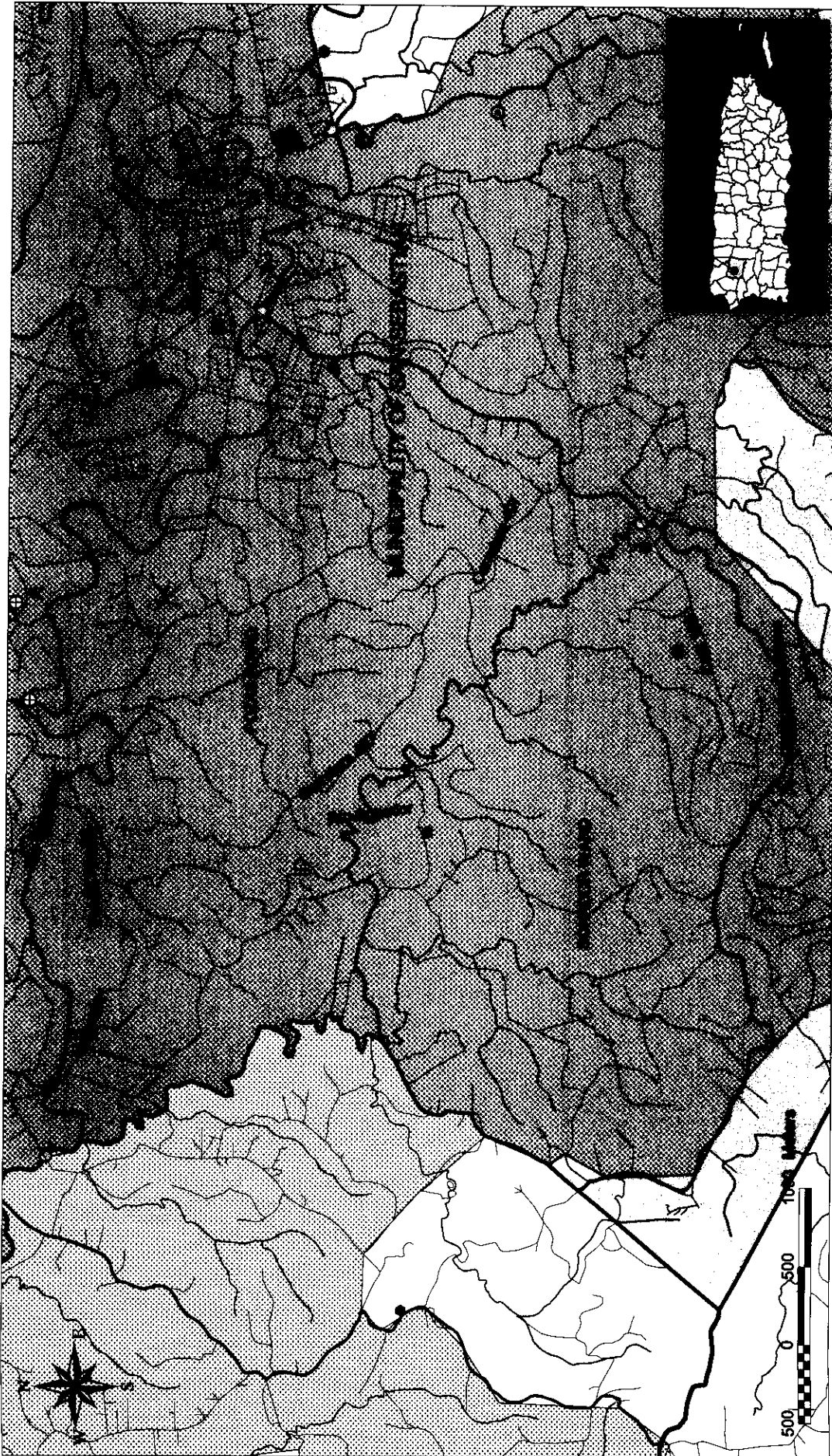


Legend:

- Non-Hazardous Waste Storage, Treatment & Disposal Facilities
- Toxic Release Inventory (TRI) facilities
- Reach
- ⊕ Superfund (orally) sites
- Superfund monitoring facilities
- Resource conservation & recovery act (rcra) facilities
- ⊕ Wrecks
- ▲ PRASA Flushing Plants
- Permit & compliance (per) facilities
- PRASA Aseptic Pump
- ▲ Air quality adaptation (aq) monitoring locations
- Air facility adaptation (af) facilities
- ▲ PRASA Sewer System
- Role y quaternario
- National priority list (npl)
- Lakes & Lagoons
- Individual Parks
- Urbanized Areas
- Wards of San Sebastian
- Municipality of San Sebastian



Figure 5D - GIS Map - Pozas & Sonador Wards
 Notice of Intent, NPDES MS4 PRR40000, Municipality of San Sebastian

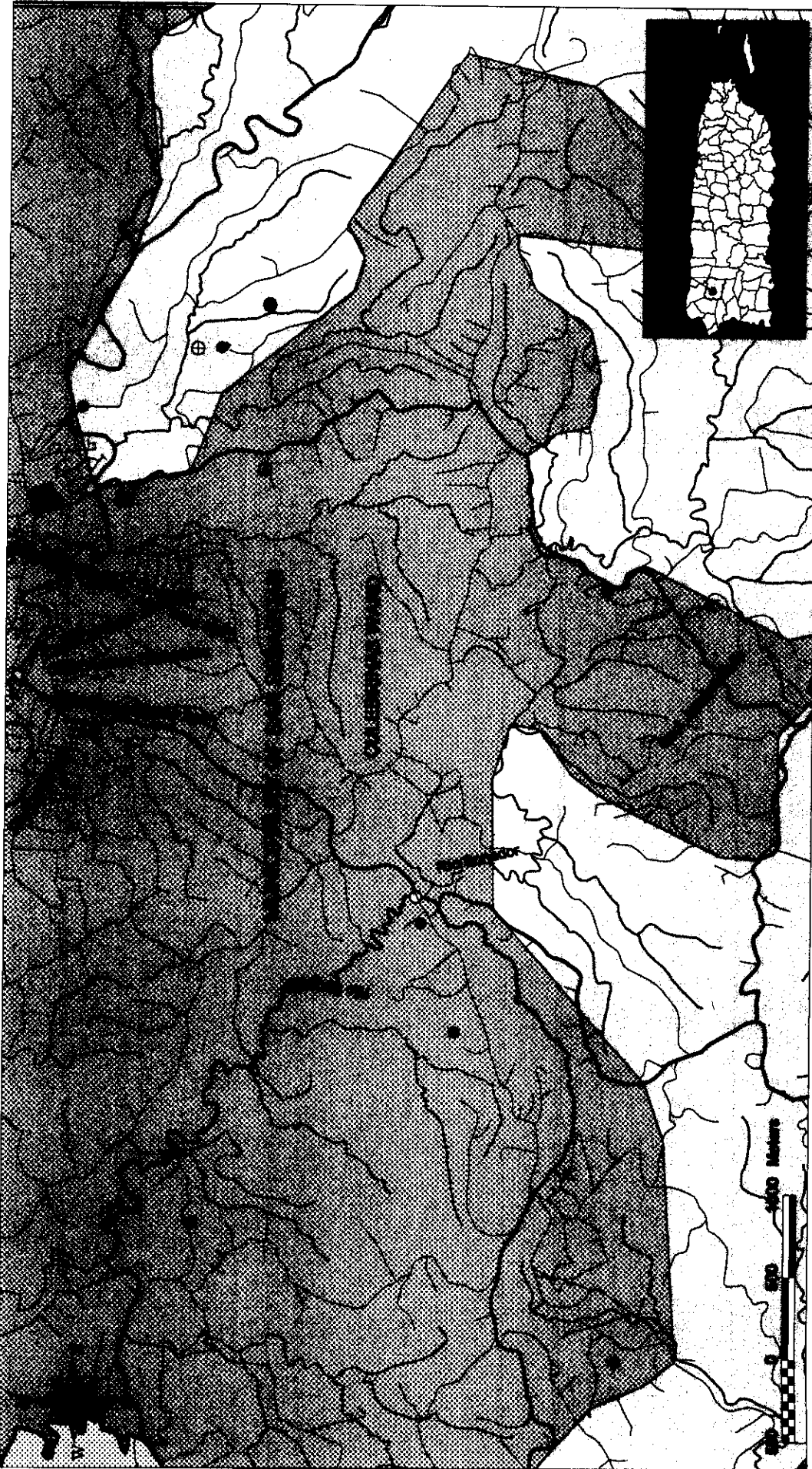


Legend

| | | | | | |
|--|--|--------------------------|--|-------------------------------|---------------------------------|
| ● Non-Hazardous Waste Storage, Treatment & Disposal Facilities | ⊕ Superfund (or other) sites | ⊙ Wadis | ● PRASA Aesthetic Pump | ⊙ National Priority Act (NPA) | ▨ Unincorporated Areas |
| ● Toxic Release Inventory (TRI) Facilities | ○ Special handling locations | ● PRASA Filtering Ports | ▲ Air quality substation (AQ) monitoring locations | ▨ Lakes & Lagoons | ▨ Wards of San Sebastian |
| ▨ Roadside | ▨ Resource conservation & recovery act (RCRA) facilities | ● PRASA Pumping Stations | ● Air facility substation (AF) facilities | ▨ Individual Parks | ▨ Municipality of San Sebastian |
| | | ▨ PRASA Sewer System | | | |
| | | ▨ Storm y cañaleras | | | |
| | | ▨ Waterbodies | | | |



Figure 5E - GIS Map - Culebrinas Ward
 Notice of Intent, NPDES MS4 PRR40000, Municipality of San Sebastian



Legend:

- Non-Hazardous Waste Storage, Treatment & Disposal Facilities
- Toxic Release Inventory (TRI) facilities
- ▣ Roads
- ⊕ Superfund (cancer) sites
- Street monitoring locations
- ▣ Resource conservation & recovery act (RCRA) facilities
- ⊕ Wells
- PRASA Filtration Plants
- ▣ Permits & compliance (post) facilities
- PRASA Aeration Pumps
- ▲ Air quality sub-system (AQ) monitoring locations
- Air quality sub-system (AQ) facilities
- ▣ PRASA Sewer System
- ▣ Rose y quebrada slip
- ▣ Watersheds
- ▣ National priority list (NPL)
- ▣ Lakes & Lagoons
- ▣ Industrial Parks
- ▣ Unsewered Areas
- ▣ Wards of San Sebastian
- ▣ Municipality of San Sebastian



Figure 5F - GIS Map - Alto Santo & Guacío Wards
 Notice of Intent, NPDES MS4 PRR40000, Municipality of San Sebastian

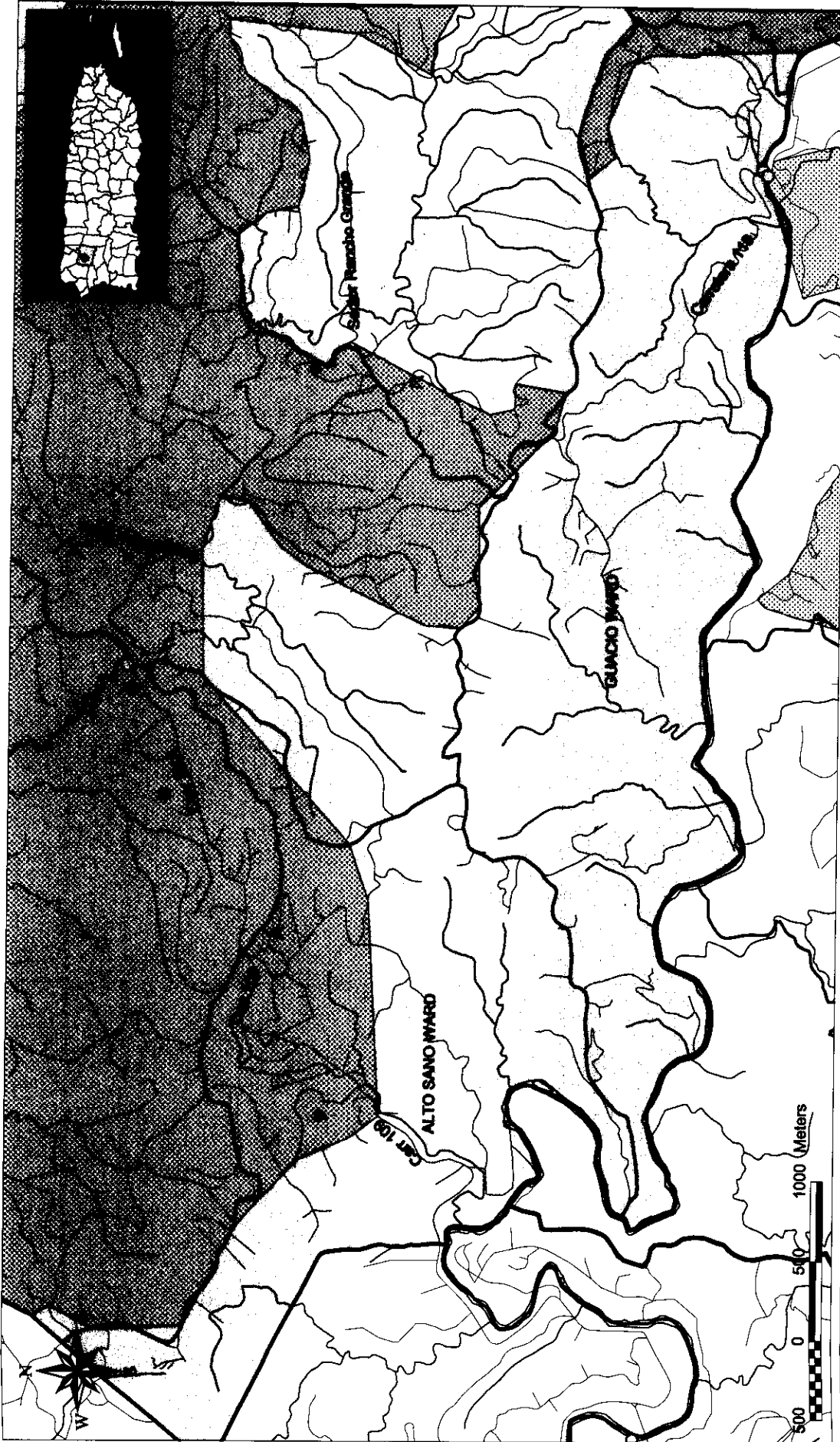
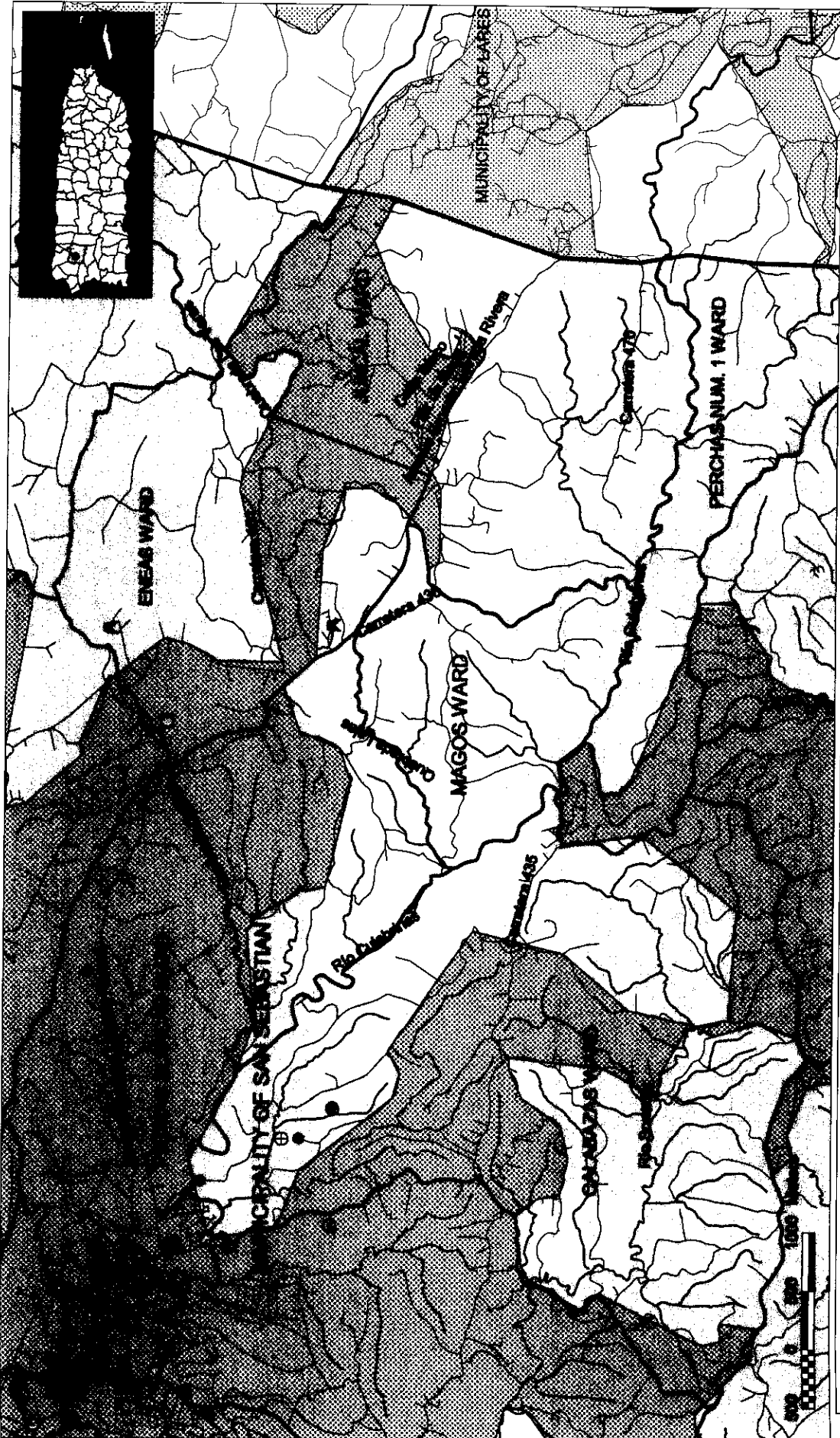


Figure 5G - GIS Map - Piedras Blancas, Eneas, Cidral, Magos, Juncal, Calabazas and Perchas #1 Wards
 Notice of Intent, NPDES MS4 PRR40000, Municipality of San Sebastian



Legend:

- Non-Hazardous Waste Storage, Treatment & Disposal Facilities
- ⊕ Superfund (or other) sites
- ⊙ Storm monitoring locations
- ⊠ Resource conservation & recovery act (RCRA) facilities
- ⊞ Toxic release inventory (TRI) facilities
- ⊡ Roads
- ⊞ Wards
- ⊞ PRASA Filtering Plants
- ⊞ Permit & compliance (PC) facilities
- PRASA Accumuland Pumps
- ▲ Air quality substation (AQ) monitoring locations
- Air facility substation (AF) facilities
- ⊞ PRASA Sewer System:
 - ▨ Risk y quebrada apto
 - ▨ National priority list (NPL)
- ⊞ Lakes & Lagoons
 - ▨ Insulated Ponds
 - ▨ Urbanized Areas
- ⊞ Wards of San Sebastian
 - ▨ Municipality of San Sebastian



Figure 5H - GIS Map - Mirabales & Perchas #2 Wards
 Notice of Intent, NPDES MS4 PRR40000, Municipality of San Sebastian

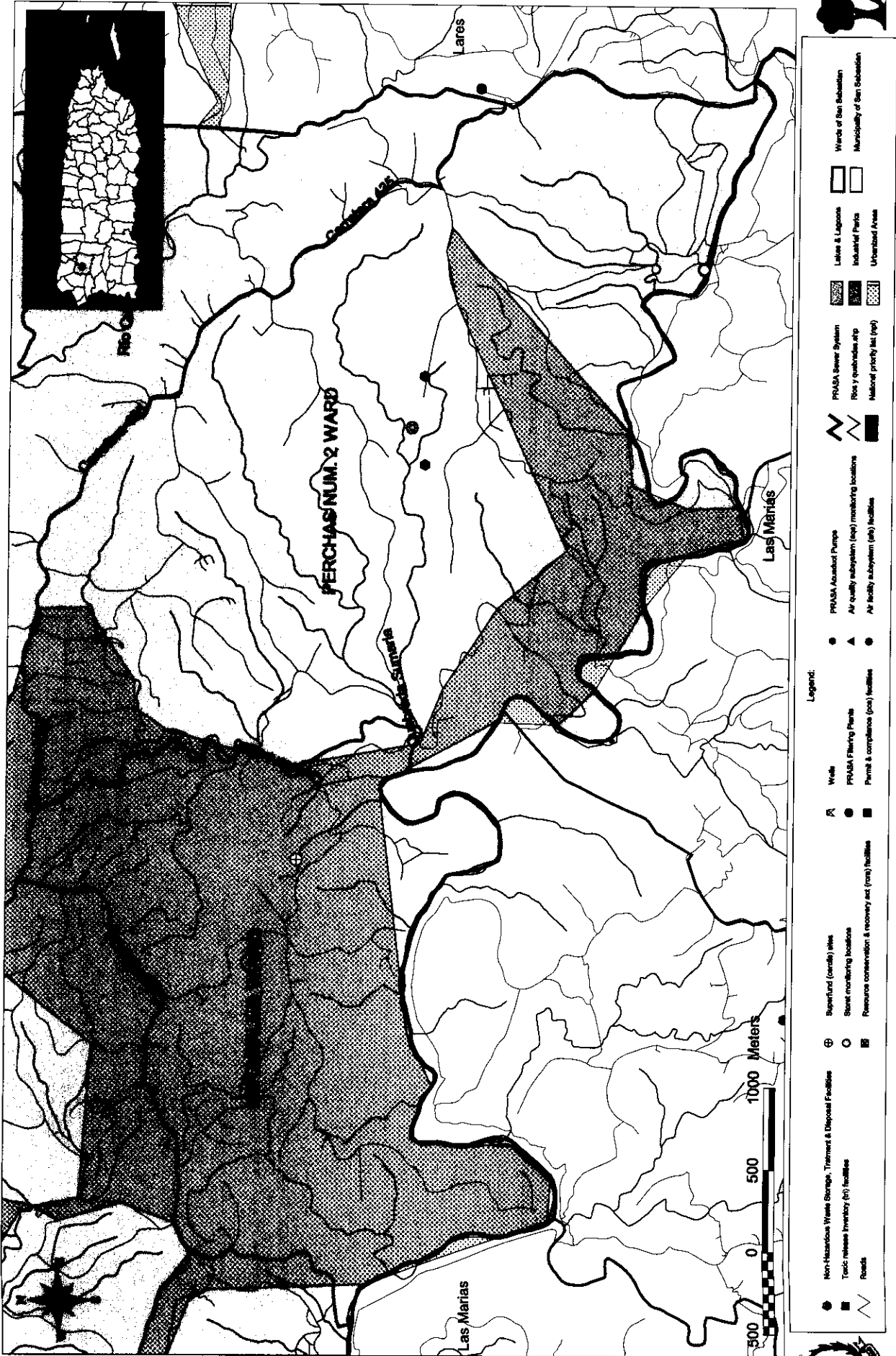
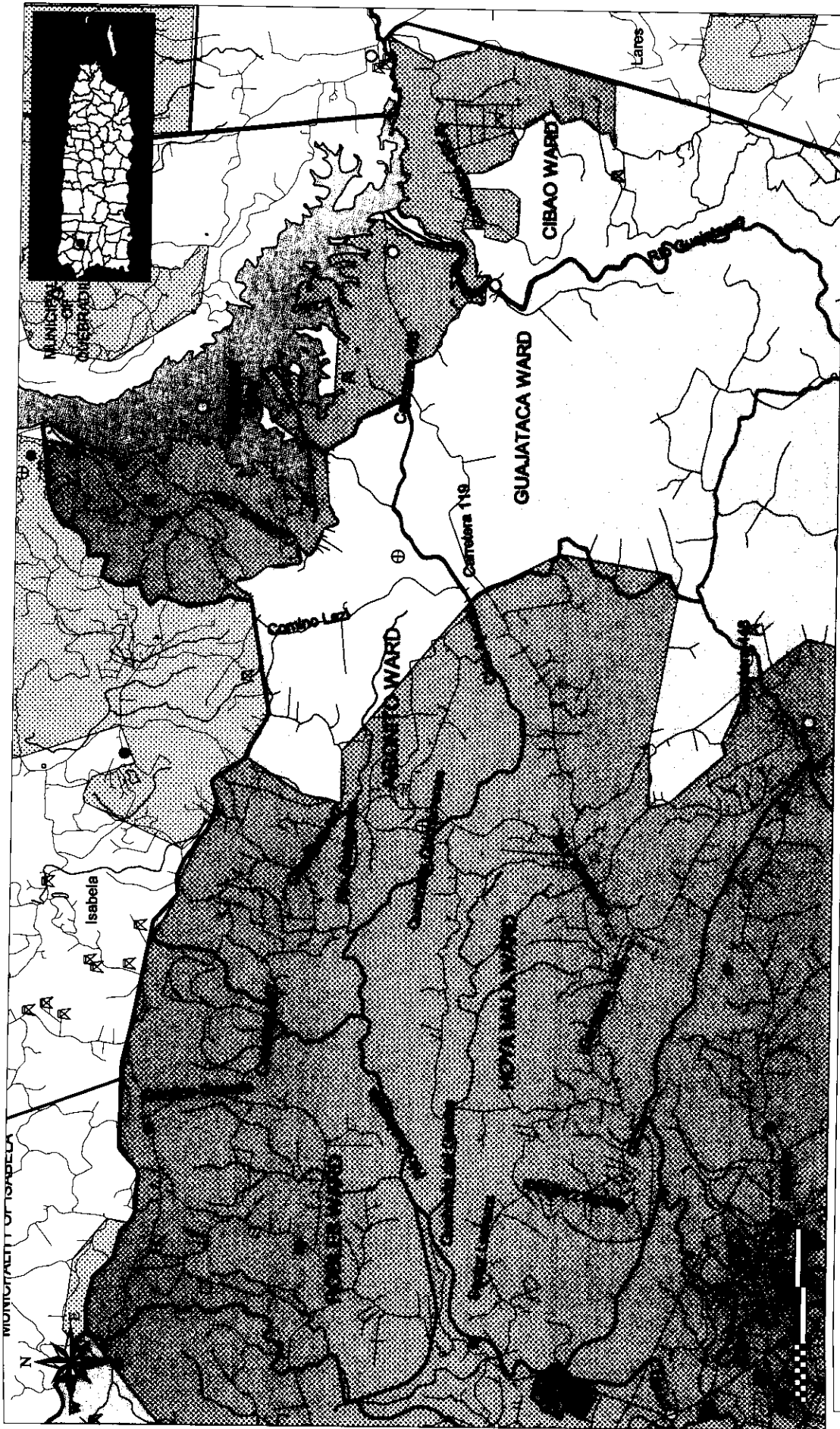


Figure 51 - GIS Map - Cibac, Guajataca, Alborito, Hoya Mala & Robles Wards
 Notice of Intent, NPDES MS4 PRR40000, Municipality of San Sebastian



Legend:

- Non-Hazardous Waste Storage, Treatment & Disposal Facilities
- ⊕ Superfund (orally) sites
- Toxic release inventory (TRI) facilities
- Resource conservation & recovery act (rca) facilities
- ▲ Well
- ▲ PRASA Filtration Plants
- PRASA Filtration Plants
- Permit & compliance (pc) facilities
- PRASA Advanced Pump
- ▲ Air quality monitoring (aqm) monitoring locations
- Air facility substation (af) facilities
- ▲ PRASA Sewer System
- ▲ Risk y subestacion
- National priority list (npl)
- ▨ Lakes & Lagoons
- ▨ Industrial Parks
- ▨ Unhazardous Area
- ▨ Wards of San Sebastian
- ▨ Municipality of San Sebastian

