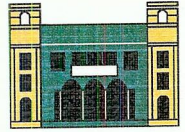




ESTADO LIBRE ASOCIADO DE PUERTO RICO

Gobierno Municipal de Isabela

Carlos O. Delgado Altieri
ALCALDE



P.O. Box 507
Isabela, Puerto Rico 00662
Tel. (787) 872-2100

July 15, 2009

Carl-Axel P. Sodeberg
Director
Caribbean Environmental Protection Division
U.S. Environmental Protection Agency, Region II
Centro Europa Building, Suite 417
1492 Ponce de Leon Ave.
San Juan, P.R. 00907-4127

**NPDES GENERAL PERMIT APPLICATION FOR THE MUNICIPALITY OF ISABELA
MS4 PHASE II STORM WATER PROGRAM**

Dear Mr. Sodeberg:

As requested in the provisions of the Clean Water Act, as amended, we are hereby submitting our full application to seek coverage under the NPDES general permit PRR040000, which applies to regulated small municipal separate storm sewer systems (MS4) in urbanized areas. This application elaborates further on the information included on the Notice of Intent submitted on June 01, 2009 including a map of the storm sewer system for most of the Municipality of Isabela, and the storm water management program with measurable goals for each BMP discussed. We hope this application fulfills your expectations adequately.

Sincerely,

Carlos O. Delgado Altieri
Mayor

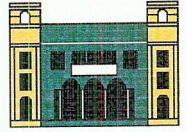
Isabela, Ciudad Turística



ESTADO LIBRE ASOCIADO DE PUERTO RICO

Gobierno Municipal de Isabela

Carlos O. Delgado Altieri
ALCALDE



P.O. Box 507
Isabela, Puerto Rico 00662
Tel. (787) 872-2100

CERTIFICATION

" I Certify under the penalty of law that this document and all attachments were prepared under my direction or supervision in accordance with a System designed and assure that qualified personnel gathered and evaluated the property information submitted to us and to the best of my knowledge and belief is true, accurate, and complete. I am aware that there are significant penalties for submitting false information, including the possibility of fine and imprisonment for Knowing violations."

Hon. Carlos O. Delgado Altieri
Mayor
Municipality of Isabela

July 15, 2009

Full Application

National Pollution Discharge Elimination System (NPDES) General Permit PRR 040000 Regulated Small Municipal Separate Storm Server System (MS4) Municipality of Isabela

- 1) The government of the Municipality of Isabela operates a municipal separate storm server system located in the urban areas of Isabela, Puerto Rico.
- 2) The name, mailing address, and location of the operator of the MS4 are:

Hon. Carlos O. Delgado Altieri
Mayor
Municipality of Isabela
P.O. Box 507
Isabela, P.R. 00662

Phone numbers: (787)872-8585 / (787)608-3030
(787)872-2100 / ext. 2212

E-mail

Municipality: alcaldeisabela@yahoo.com
Mayor: charliedelgado_alcalde@yahoo.com
Project management & Development office: desarrollo@isabela.com.pr

Location of representative's office: City hall located in the town square in the Corchado street #75 Isabela, P.R.

Bordering Municipalities: Quebradillas city and Guajataca River to the East, Moca City, San Sebastian City and Lake Guajataca to the South, Atlantic Ocean to the North and Los Cedros Creek and Aguadilla City to the north.

- 3) The Standard Industrial Classification (SIC) Code for the Municipality is 9199, which applies to public administration / general federal, state or local government activities.
- 4) In addition to the primary administrative contact, who is the Hon. Mayor Carlos O. Delgado Altieri, the primary technical staff contact is:

Eng. Miguel E. Mendez Perez (Primary Contact)
Director of Project Management & Development Office
Municipality of Isabela
P.O. Box 507
Isabela, P.R. 00662
Phone: (787)872-2100 ext. 2251
Cel: (787)608-2994
Fax: (787)830-5766 / (787)872-5145
Email: desarrollo@isabela.com.pr

Mrs. Zenaida Barreto Vargas
Director of Emergency Management Office
Municipality of Isabela
P.O. Box 507
Isabela, P.R. 00662
Phone: (787)872-0020
Cel: (787)608-3033
Fax:(787)872-0255
Email: ome@isabela.com.pr

Mr. Eduardo Aldarondo
Director of Public Works Office
Municipality of Isabela
P.O. Box 507
Isabela, P.R. 00662
Phone:(787)872-1055
Cel:(787)640-9376
Fax:(787)830-2075
Email: N/A

Mr. Miguel Rodríguez Bonilla
Director of Recycle Office
Municipality of Isabela
P.O. Box 507
Isabela, P.R. 00662
Phone: (787)872-1040
Cel:(787)515-3438
Fax:(787)872-1040
Email: isabelarecicla@yahoo.com

- 5) The Municipality of Isabela gathered the list of all the discharge permits approved for its municipal projects. There are several others on going projects in the Municipality, but they are either of private or state government ownership.

- a) PGC09-37-0016-RA- Construction of New Building in Municipality facilities. "Centro Integral de la Juventud"
- b) PGC08-37-0053-RM- Construction of a Promenade Way in the North Coast of Guayabos and Bajuras Ward for recreational and sports activities.

These are the only active municipal projects that require a discharge permit, because many of the other municipal projects are structural renovations which involve very little or not earth movement.

A few other municipal projects are currently in the planning process or lack the necessary funding to carry on, so they have not yet reached the discharge permit application stage.

- 6) Attachment I of this Notice of Application includes a map of the Municipality's extendity of at least 1 mile beyond the property boundaries. A topographic map was not available. This map includes, the location of the water movement, installation and discharge structures, surface water bodies, and other items associated with our MS4. It also has no public records of any known drinking wells. Surface bodies have been identified on the attached maps.
- 7) The Municipality of Isabela covers an area of approximately 36,803 strings; of which only 18% are considered urban areas in the Municipality's Land Use Plan. According to the 2000 Census, the government of Isabela served a population of approximately 44,444 habitants, which was projected to be around 48,210 in 2010. The local government structure is aimed at providing the basic local services to all of the Isabela residents. Services include, among others, the following: health services, infrastructure and disposal, industrial development, tourism development and support, low income housing developments, etc.

The Municipality of Isabela is within part of the Guajataca River counter basic and has a shoreline of approximately 10.90 kilometers facing the Atlantic Ocean. The majority of its storm waters drain towards the Guajataca River, which shortly reaches its final destination in the Atlantic Ocean. The MS4 of the Municipality of Isabela contains a wide arrange of discharges, including existing residential, commercial, industrial, agricultural and tourism developments along with on going construction for a variety of similar uses.

- 8) The Municipality of Isabela has a territorial extension of approximately 92 squares miles. It's Urban Center is approximately 10 Squares miles large.
- 9) A description of the preliminary measurable goals for each of the six minimum controls to be established as part of Isabela's storm Water Management Program (SWMP) is included as part of Attachment 2 of this application.

- 10) The descriptions of the measurable goals for each BMP, including the years in which the actions will be taken, interim milestones and the frequency of the action, area included as part of the storm water management program included in Attachment 2.
- 11) The persons responsible for implementing or coordinating the storm water management programs are:

Mrs. Marisol Rosa Acevedo
City Administrator
Municipality of Isabela
P.O. Box 507
Isabela, P.R. 00662

Tel. (787)872-2100 ext. 2240
Cel. (787)407-1379

Eng. Miguel E. Mendez
Director of Gerency and Management Projects
Municipality of Isabela
P.O. Box 507
Isabela, P.R. 00662

Tel. (787)872-2100 ext. 2251
Cel. (787)608-2994

ATTACHMENT I
Maps of the Storm Sewer System

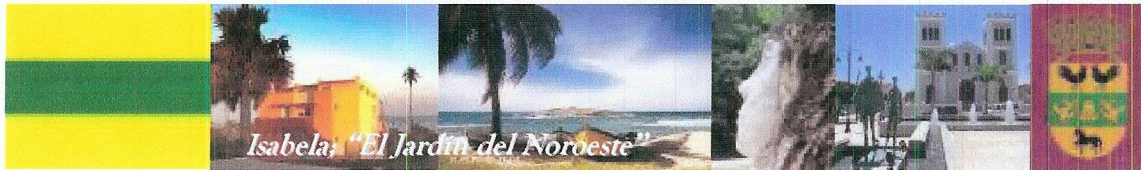
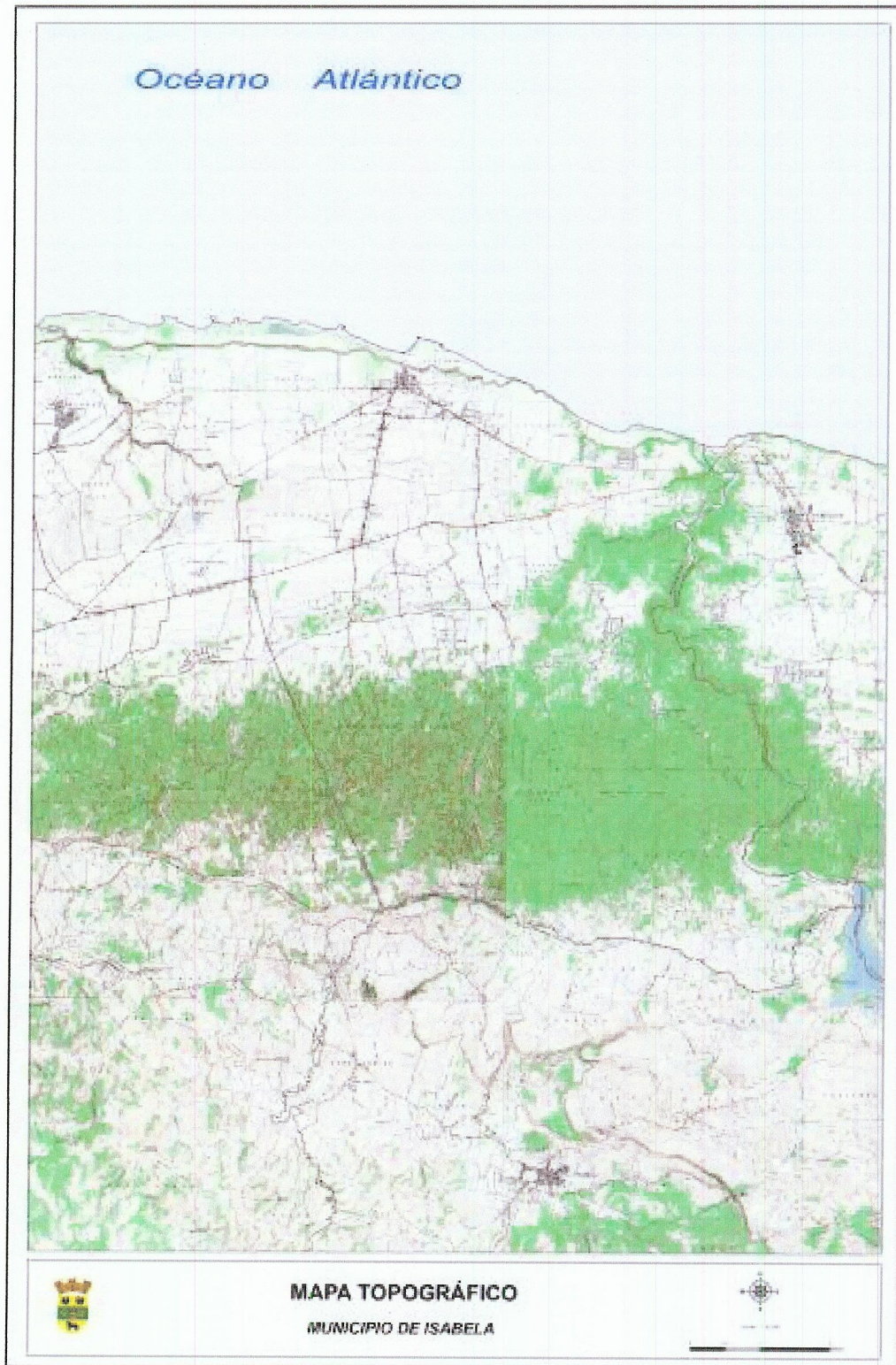


FIGURA 8. MAPA TOPOGRÁFICO DE ISABELA



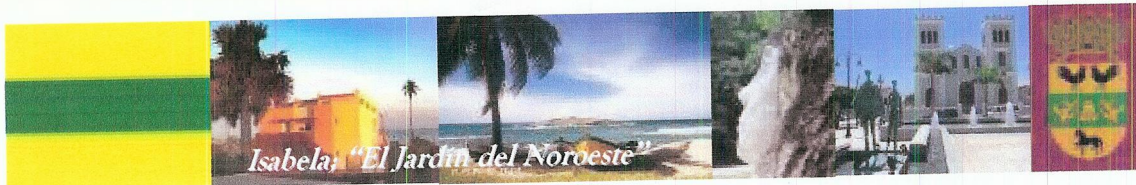


FIGURA 10. MAPA DE HIDROGRAFÍA



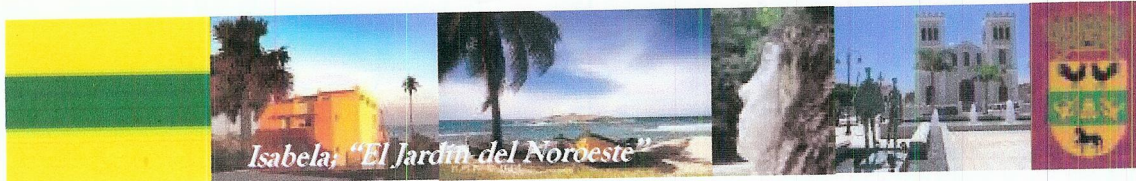
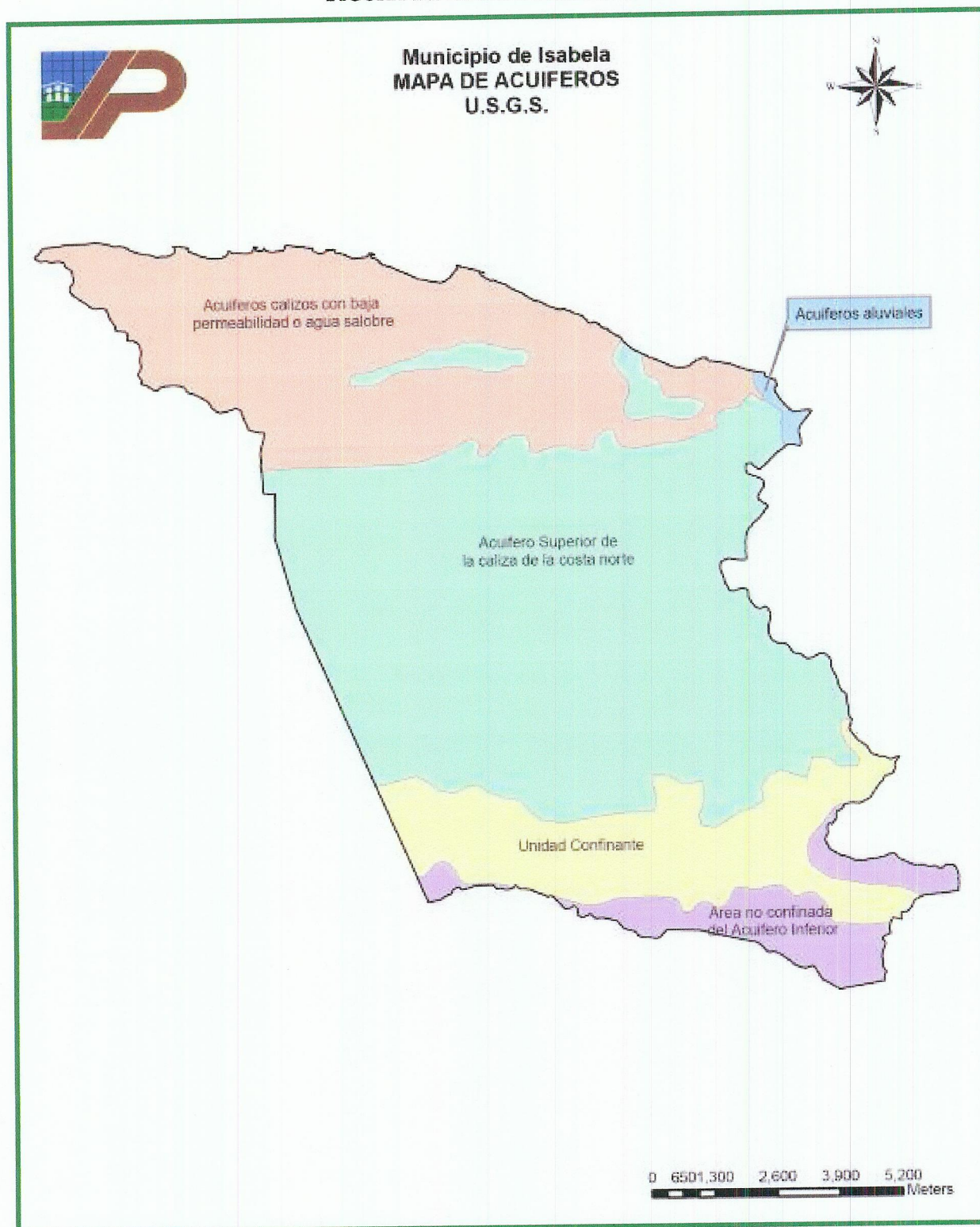
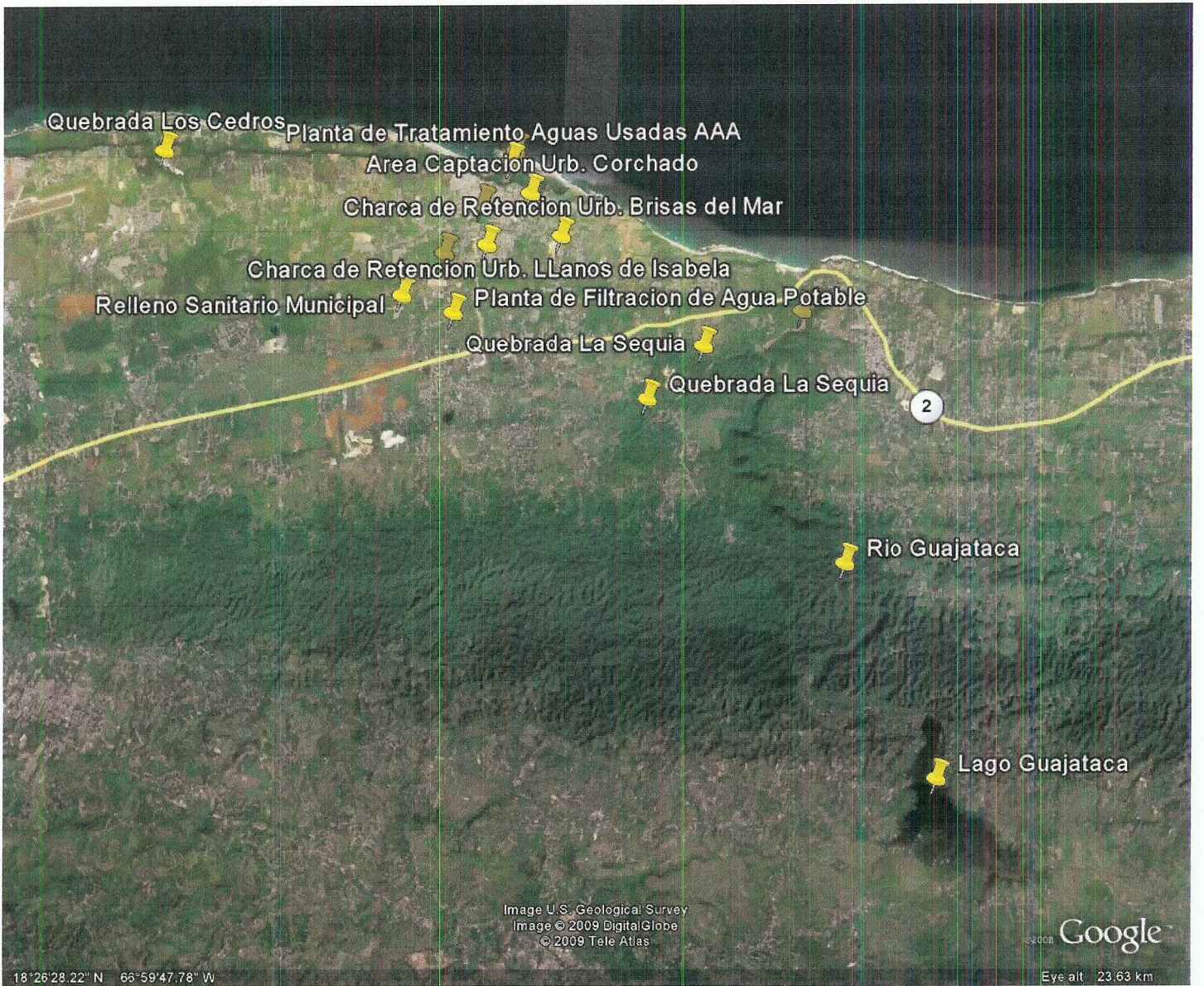


FIGURA 11. MAPA DE ACUÍFEROS



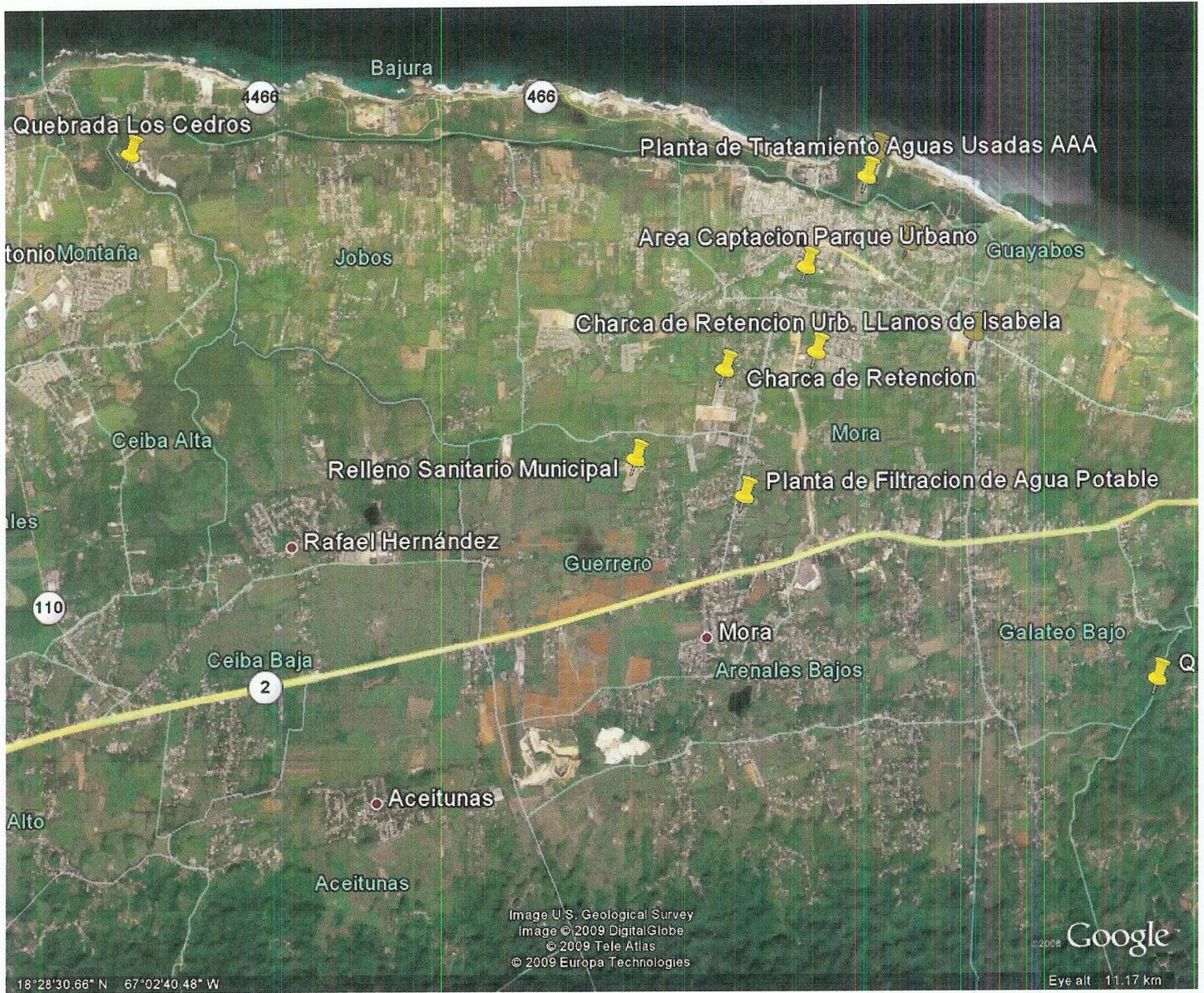


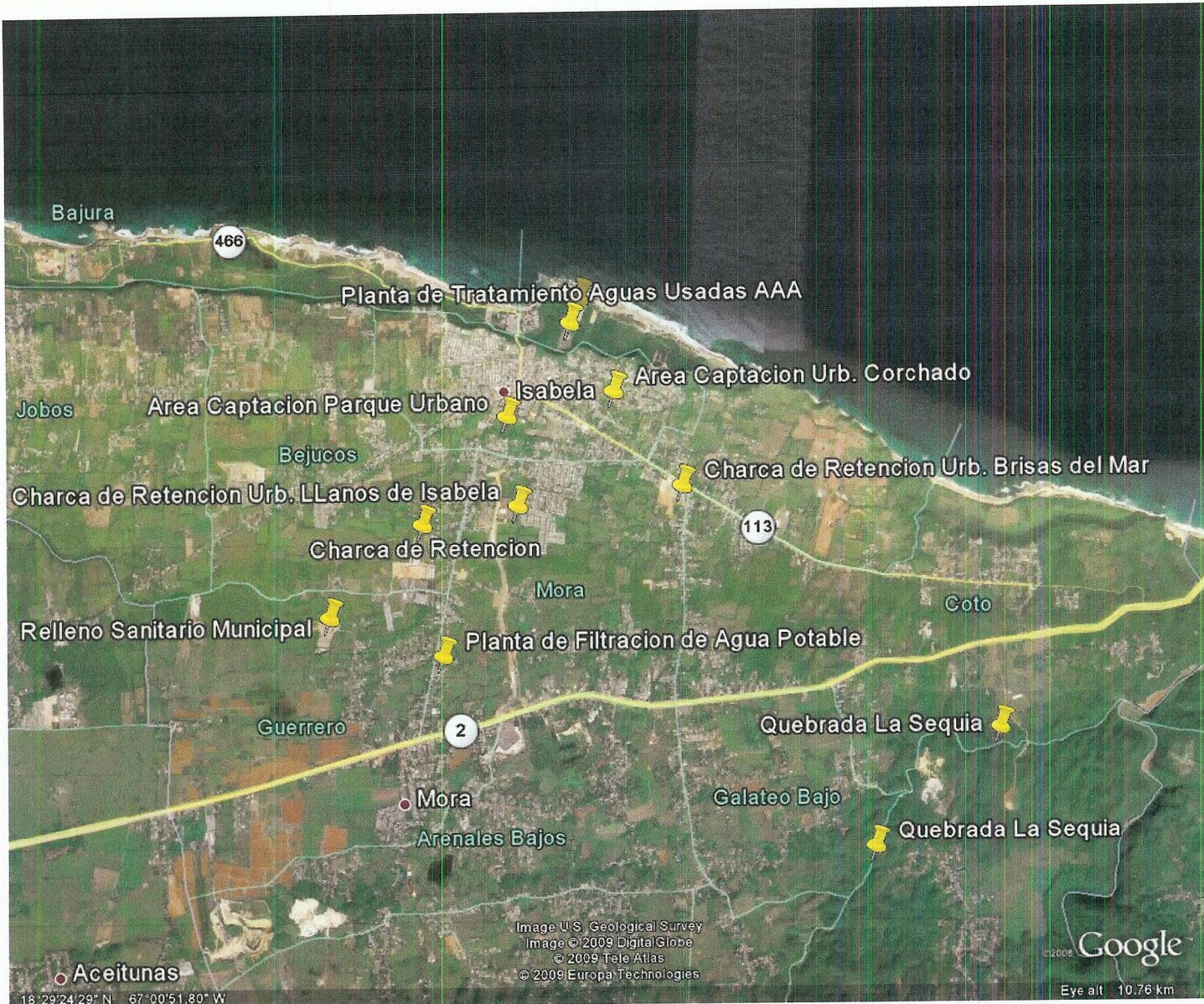
18°26'28.22" N 66°59'47.78" W

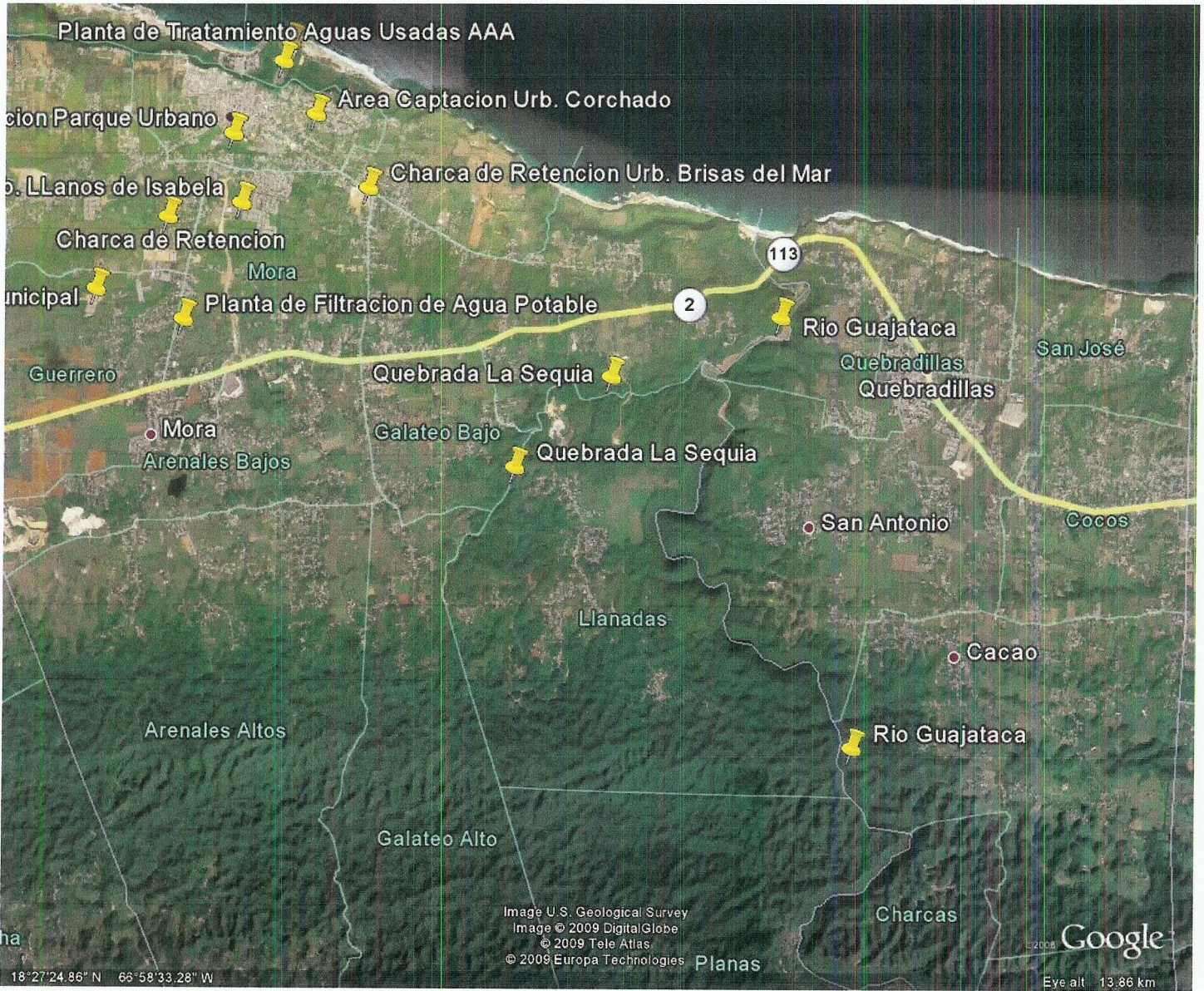
Image U.S. Geological Survey
Image © 2009 DigitalGlobe
© 2009 Tele Atlas

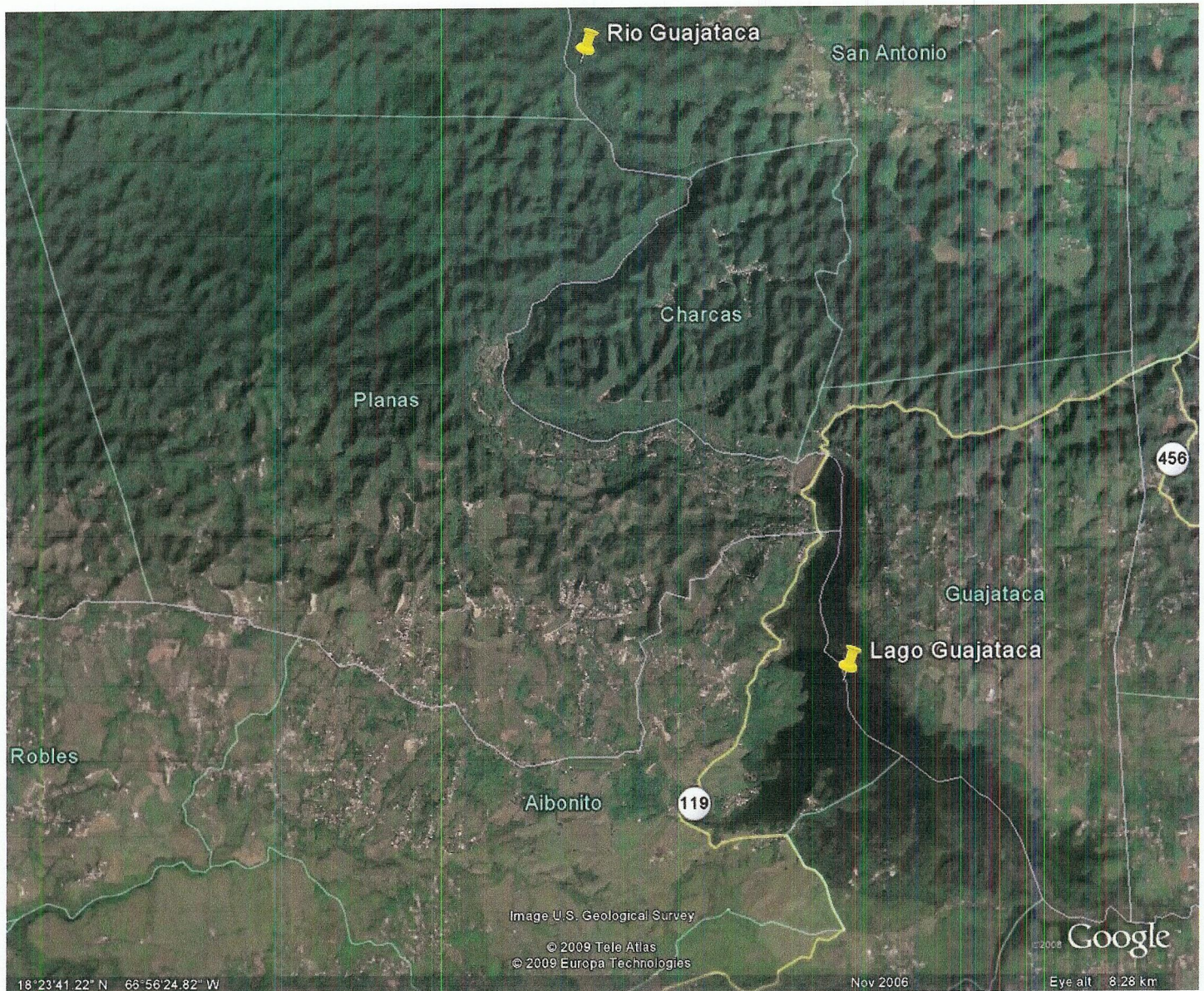
Google

Eye alt 23.63 km









Rio Guajataca

San Antonio

Charcas

Planas

456

Guajataca

Lago Guajataca

Robles

Aibonito

119

Image U.S. Geological Survey
© 2009 Tele Atlas
© 2009 Europa Technologies







Google

18°23'41.22" N 65°56'24.82" W

Nov 2006

Eye alt 8.28 km

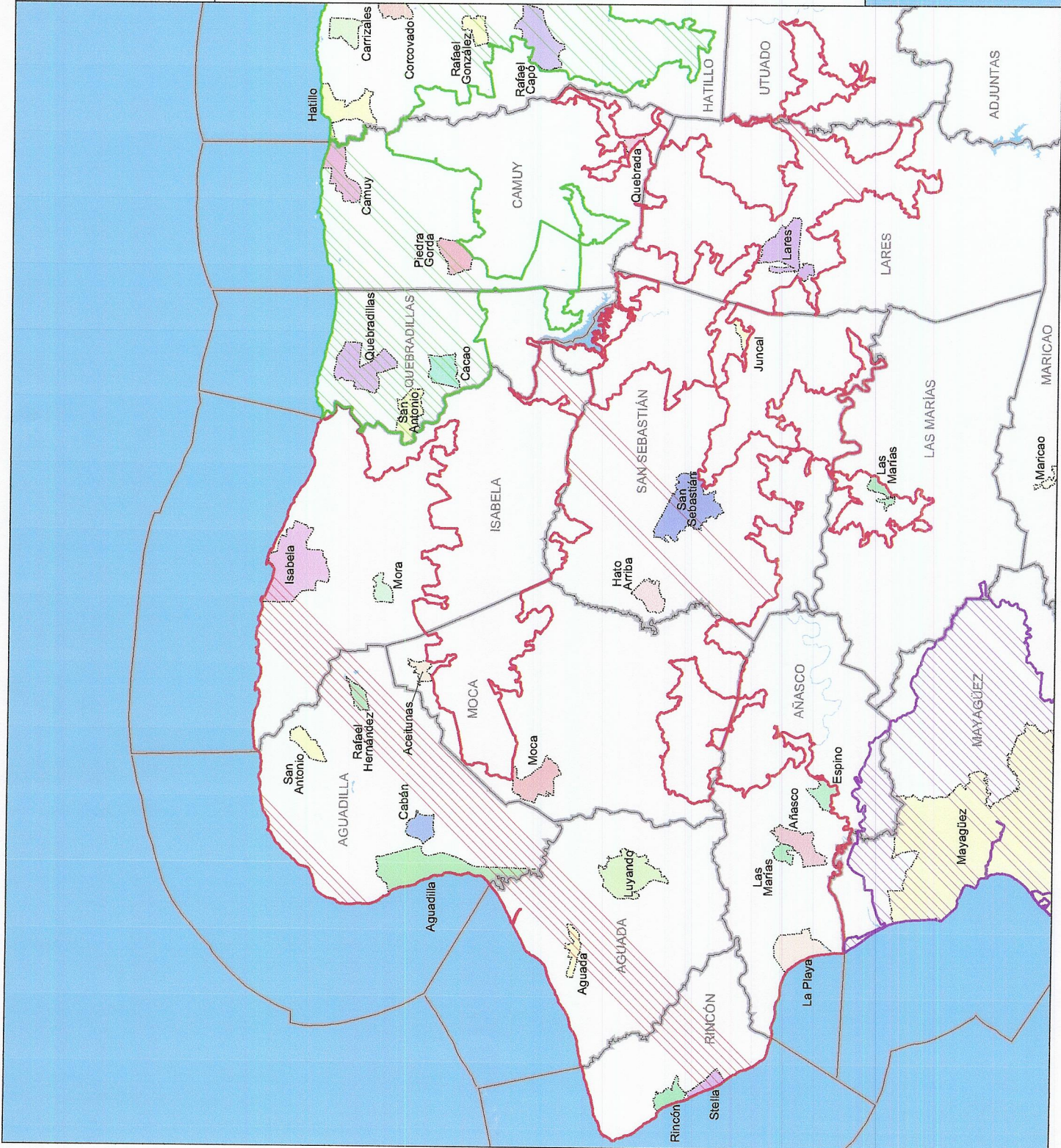
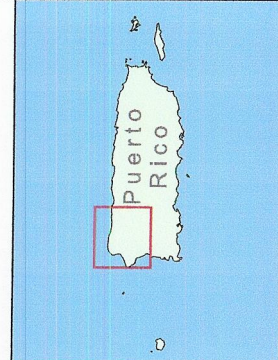
Aguadilla-Isabela-San Sebastián, PR Urbanized Area Storm Water Entities as Defined by the 2000 Census

- 2000 Census Urbanized Areas**
-  Aguadilla-Isabela-San Sebastián, PR
 -  Arecibo, PR
 -  Mayagüez, PR
- Municipal Boundaries**
- 
 -  County Boundaries
 -  Major Waterbodies

SOURCE:
US Census Bureau TIGER data, 2000 Census

PROJECTION:
State Plane Coordinate System - Puerto Rico
Horizontal datum - NAD83

MAP DESIGN:
October 7, 2002



Aguadilla-Isabela-San Sebastián, PR Urbanized Area Storm Water Entities as Defined by the 2000 Census

2000 Census Urbanized Areas

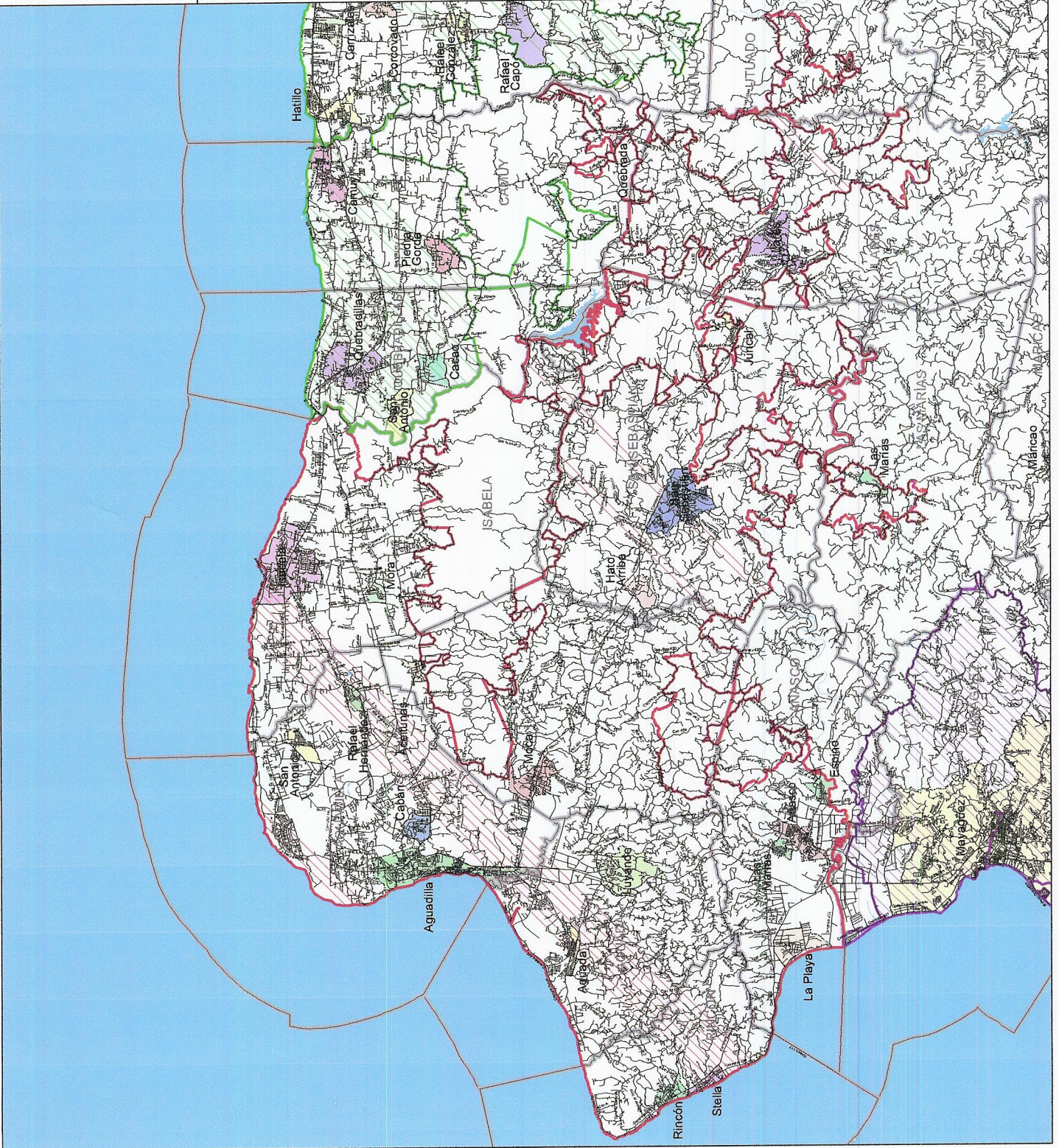
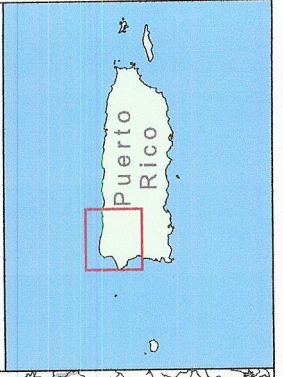
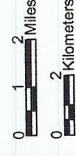
-  Aguadilla-Isabela-San Sebastián, PR
-  Arecibo, PR
-  Mayagüez, PR

-  Municipal Boundaries
-  County Boundaries
-  Major Waterbodies
-  Roads

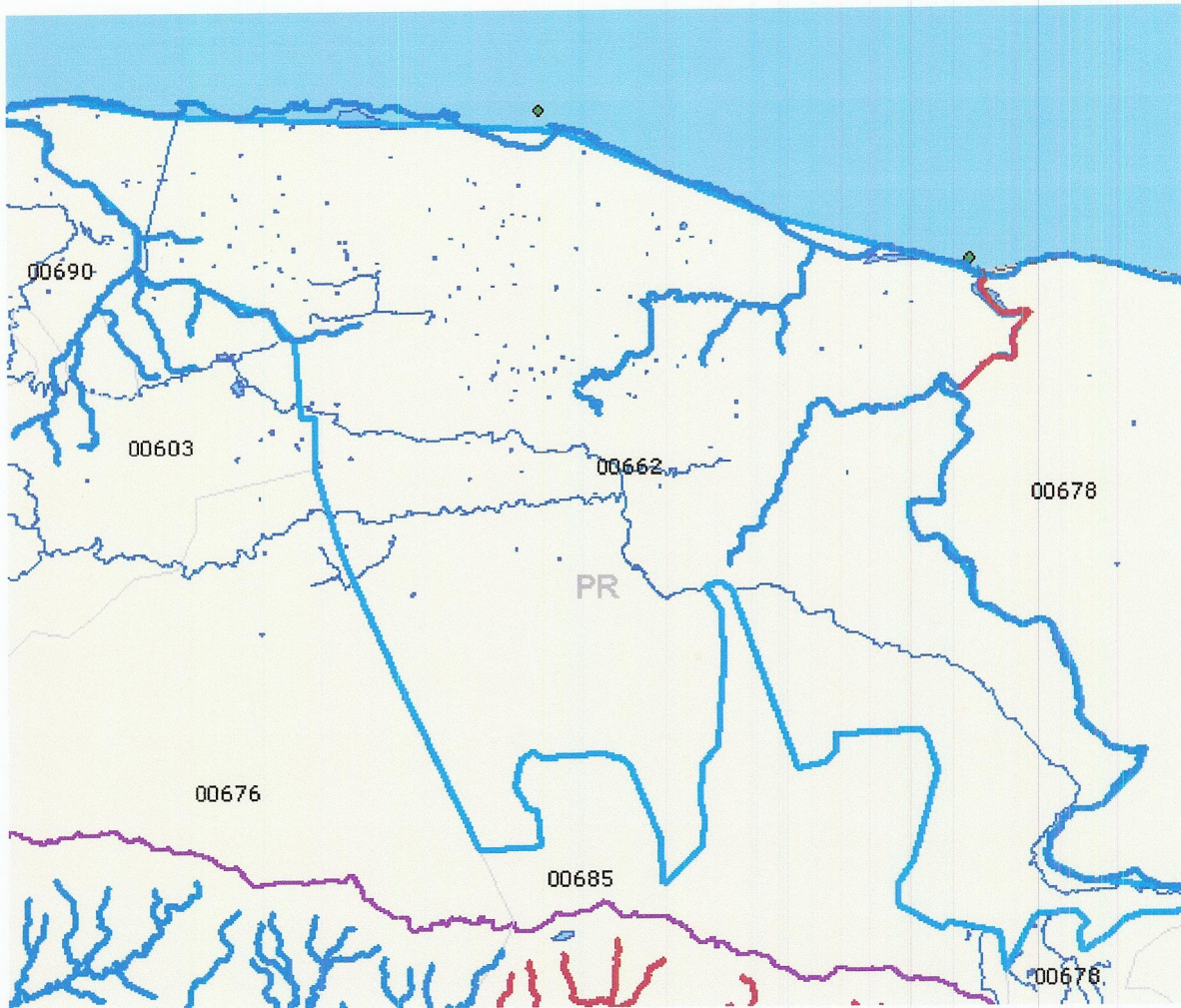
SOURCE:
US Census Bureau TIGER data, 2000 Census

PROJECTION:
State Plane Coordinate System - Puerto Rico
Horizontal datum - NAD83

MAP DESIGN:
October 7, 2002



Location of Impaired Waters of Isabela





1 milla 1

1 milla 2

1 Milla 4

1 Milla 3

Bejucos

Isabela

Calle Amador

Image U.S. Geological Survey
Image © 2009 DigitalGlobe
© 2009 Tele Atlas
© 2009 Europa Technologies
elev 70 m

Google

18°30'02.96" N 67°01'26.64" W

Eye alt 4.14 km

ATTACHMENT II

Description of the Best Management Practices

Description of the Best Management Practices

The Municipality of Isabela will implement the following best management practices for each of the six storm minimum control measures as described in 40 CFR 122.34 (b)(1) through (6).

1) Public Education Programs:

Objectives: The Municipality will educate the general public by making 300 impressions per year with a storm water quality message via print, or other appropriate media.

a. Prepare storm water education materials for citizens

Goal: Prepare outreach materials on proper storm water management practices for citizens. Storm water management practices that can include:

- ✓ Avoid blocking existing channels made from storm water.
- ✓ Avoid leaving construction materials unprotected from storm water flows.
- ✓ Always clean up debris around the house.
- ✓ Periodically clean storm drains to prevent blockages.

b. Prepare storm water education materials for citizens on management of household hazardous waste.

Goal: Prepare outreach material on proper household hazardous waste management practices for citizens. Practices include:

- ✓ Proper ways to store paint including how to seal the paint and how and where to store it.
- ✓ How to store pesticides.
- ✓ The proper use of hazardous materials: how much to use and how much not to have, avoiding the release materials into the environmental.
- ✓ How to minimize the disposal of necessary hazardous products and when possible the use of nontoxic alternatives.
- ✓ The dangers of flushing waste down the drain.
- ✓ The dangers of pouring hazardous products into gutters, drains and sewers.
- ✓ Lessons on how to dispose of hazardous waste.

c. Prepare trash management educational material.

Goal: Prepare outreach materials on proper trash management practices for citizens. Points include:

- ✓ Implement a control structure designed to target the most prevalent types of trash and identify the source of the trash.
 - ✓ Create an inventory of possible locations for trash management and disposal.
 - ✓ Regular cleaning and maintenance are necessary to prevent accumulating trash.
 - ✓ Inform communities on options to recycle.
 - ✓ Promote waste reduction.
 - ✓ Cleanup campaigns.
- d. Prepare education/outreach material for commercial activities.
- Goals:** Prepare educate/outreach material for commercial activities. Some recommendations include:
- ✓ Good storage practices.
 - ✓ Waste management.
 - ✓ Vehicle and equipment washing.
 - ✓ Spill prevention and cleanup.
 - ✓ Proper maintenance.
 - ✓ Training and education for employees and customers.
 - ✓ Eliminating improper discharges to drains.
 - ✓ Trucking and shipping/receiving.
 - ✓ Constructing parking and landscaped areas to include storm water management features.
 - ✓ Using absorbent material to dispose of automotive fluids.
 - ✓ Rinsing and cleaning parking lots.
- e. Prepare classroom education on storm water pollution management.
- Goals:** Prepare classroom education material for distributing to local schools. Municipality officials should work with school officials to identify their needs and provide educational aid.

2) Public Involvement Participation:

Objectives: Involve stake holder groups, include the municipal government, businesses, and citizens in making decisions about the storm water management priorities and programs.

- a. Establish a NPDES storm water steering committee

Goal: The NPDES Storm Water Steering Committee is established and meets during the permit term. It Includes members from the Municipality, public, industrial, commercial groups, constructor and design groups.

- b. Hold public meetings to receive input on the proposed program.

Goal: Two public meetings will be held on the subject.

3) Illicit Discharge and Elimination:

Objectives: Develop a comprehensive map of the storm water drain system, established and carry out procedures to identify and remove illicit discharges, establish legal authority for enforcement, and encourage public involvement.

a. Storm drain system map.

Goal: Develop a storm drain system map. This will aid the Municipality in targeting outfalls and dry weather flows.

b. Identify illicit connections through dry weather screening.

Goal: A survey during dry weather of the storm drain system will be conducted to identify non-storm water flows. Areas with suspicious activity will be further inspected. Illicit discharge/illegal dumping hotline

c. Illicit discharge/illegal dumping hotline.

Goal: A number and extension will be assigned to the Municipal's government phone network to provide a hotline for citizens.

4) Prepare a program to reduce pollutants in any storm water runoff to our Storm Sewer System from construction activities:

Objectives: Establish a set of minimum erosion and sediment control (ESC) requirements for construction sites, including planning, installation, inspection, and maintenance of ESC practices.

a. Request ESC plans for projects with land disturbances.

Goal: A draft ordinance will be prepared that will request an ESC with all project constructions.

b. Request the use of appropriate perimeter controls.

Goal: ESC requirements will be revised to require all sites on slopes and areas where pooling of water is possible to use perimeter controls.

c. Develop an educational program for contractors.

Goal: Educate contractors about the proper selection, inspection, and maintenance of BMPs to ensure compliance with the ESC.

5) Post-construction storm water management in new developments and redevelopments.

Objective: Reduce the volume and improve the quality of storm water runoff by disconnecting impervious surfaces and maintaining structural storm water controls.

a. Develop a program for maintenance of structural storm water controls.

Goal: Conduct an inventory of structural runoff controls. Integrate the location of these controls with schedules for regular inspection and

maintenance. Conduct inspections annually and conduct regular maintenance.

- b. Develop and implement a storm water ordinance and guidance that includes standards to control runoff impacts.

Goal: Construction activities in the Municipality will be issued descriptions and plans regarding control practices and site design that comply with criteria.

- 6) Pollution prevention/good housekeeping for municipal operations.

Objective: Reduce the amount of nutrients entering receiving water through education of employees about lawn care activities, spill prevention, control, and vehicle washing.

- a. Training program for grounds maintenance and landscaping crews.

Goal: Develop a pollution prevention workshop for all municipal employees responsible for grounds maintenance and landscaping at public facilities. New employees will be trained as they are hired.

- b. Develop spill prevention and control plans for municipal facilities.

Goal: Develop plans describing spill prevention and control procedures. Conduct a spill prevention and response training session for all employees. Distribute materials, posters, and pamphlets.