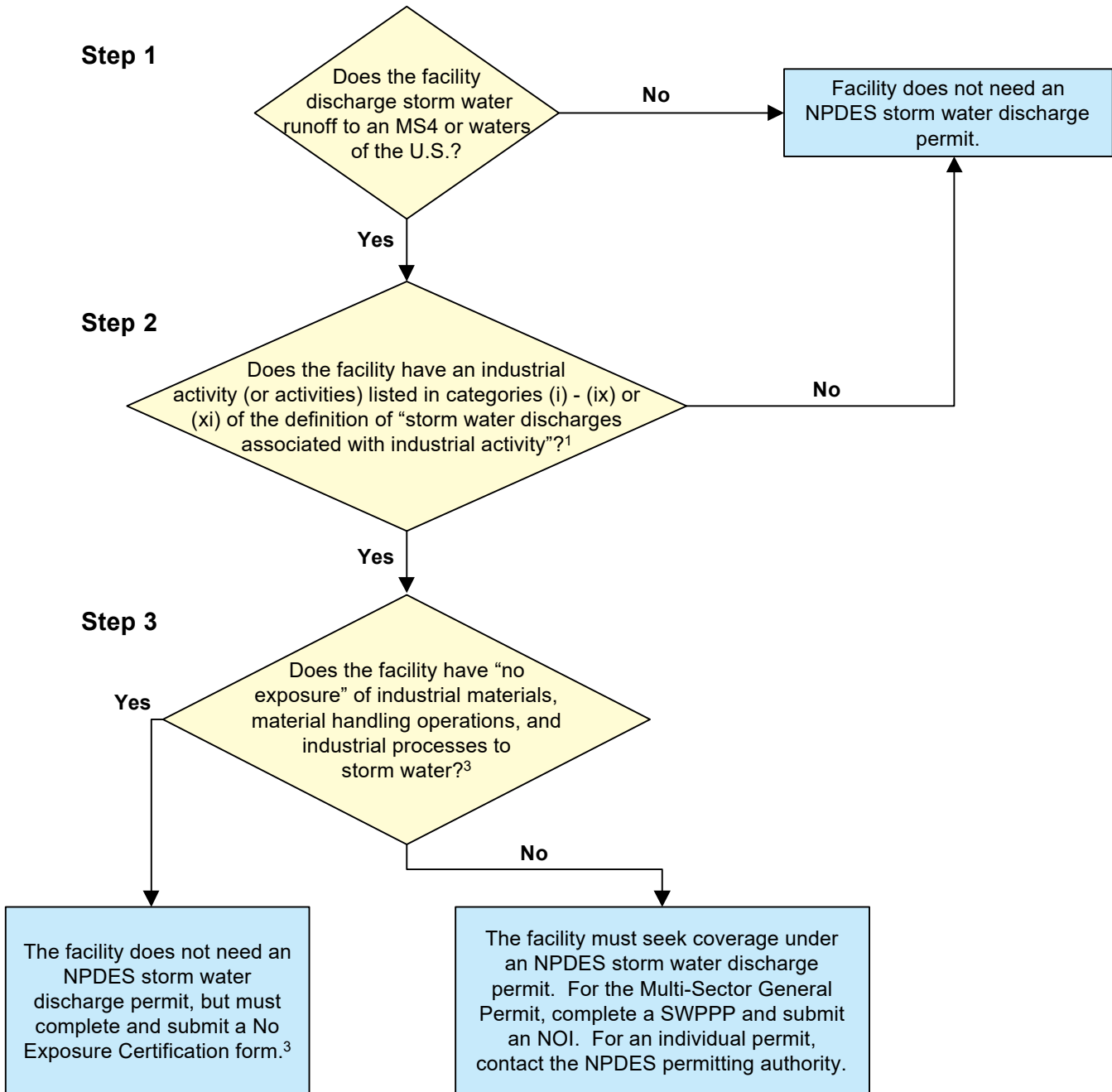


Industrial Facilities Storm Water Program Permitting Decision Tree



1. See 40 CFR 122.26(b)(14)(i)-(ix), (xi).
2. See new 122.26(e)(1)(ii). A permit is required unless there is a condition of no exposure as defined at new 122.26(g).
3. See new 122.26(g) for the definition of “no exposure” and the certification requirements.

Need assistance? Contact Us - We're your partners in protecting clean water!
 EPA Headquarters: Emily Halter halter.emily@epa.gov (202) 564-3324
[EPA Regional Offices contacts](#)
[State NPDES program contacts](#)