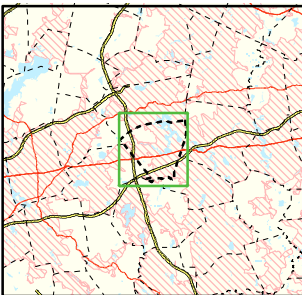




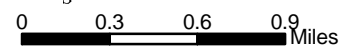
Area of Focus:



**NPDES Phase II Stormwater Program
Automatically Designated MS4 Areas
*Southborough, Massachusetts***

-  Southborough Town Boundary
-  Regulated Area (2000 Urbanized Area)

Town Population: 8,781
Regulated Population: 7,743



Data Sources: Urbanized Areas from US Census Bureau (2000). Political boundaries from MassGIS. Hydrography from NHD. Transportation data from GDT at 1:24,000. Map Created: 11/20/02; US EPA- New England GIS Center L:/projects/stormwater/phase2/matowns/new/