

Massachusetts Water Resources Authority Deer Island Treatment Plant & Combined Sewer Overflows

U.S. EPA | DRAFT CLEAN WATER ACT PERMITS

U.S. EPA is Seeking Public Input

From May 31 to July 31, 2023, the U.S. Environmental Protection Agency (EPA) Region 1 and the Massachusetts Department of Environmental Protection (MassDEP) invite the public to submit comments on the draft reissuance of the NPDES permit for the MWRA DITP that discharges treated wastewater and combined sewer overflow (CSO) discharges. The MWRA DITP facility serves 43 communities in the metropolitan Boston area.

KEY CONTACTS:

MICHELE BARDEN

EPA NPDES Permits
(617) 918-1539
barden.michele@epa.gov

CLAIRE GOLDEN

MassDEP NPDES Permits
(978) 694-3244
claire.golden@state.ma.us

GENERAL INFORMATION

EPA New England
5 Post Office Square
Suite 100
Boston, MA 02109
(617) 918-1111
www.epa.gov/region1

Toll free
1-888-EPA-7341

Virtual Public Informational Meeting and Q&A

July 12, 2023, at 7PM

Virtual Public Hearing to provide Oral Comments

July 12, 2023, at 8PM

Visit: <https://www.epa.gov/npdes-permits/epas-permit-massachusetts-water-resources-authority-mwra-outfall> to view the public notice, draft permit, related permit documents and information on how to participate in EPA's upcoming virtual events.

If you need a reasonable accommodation or have translation/interpretation needs to attend the virtual meetings, please contact Jeff Norcross.

Jeff Norcross, EPA Public Affairs Specialist
(617) 918-1839 norcross.jeffrey@epa.gov

The permit requires the wastewater be treated before it is discharged to Massachusetts Bay and sets limits on how much organic matter, bacteria, and other substances can be discharged into the Bay. A map that shows the discharge (T01), is on page 4. There are rules in place to limit CSO discharges and to let the public know when there is a discharge from a CSO. The combined portion of the sewer system is in Boston, Cambridge, Chelsea, and Somerville. The permit allows discharge from 47 CSOs.

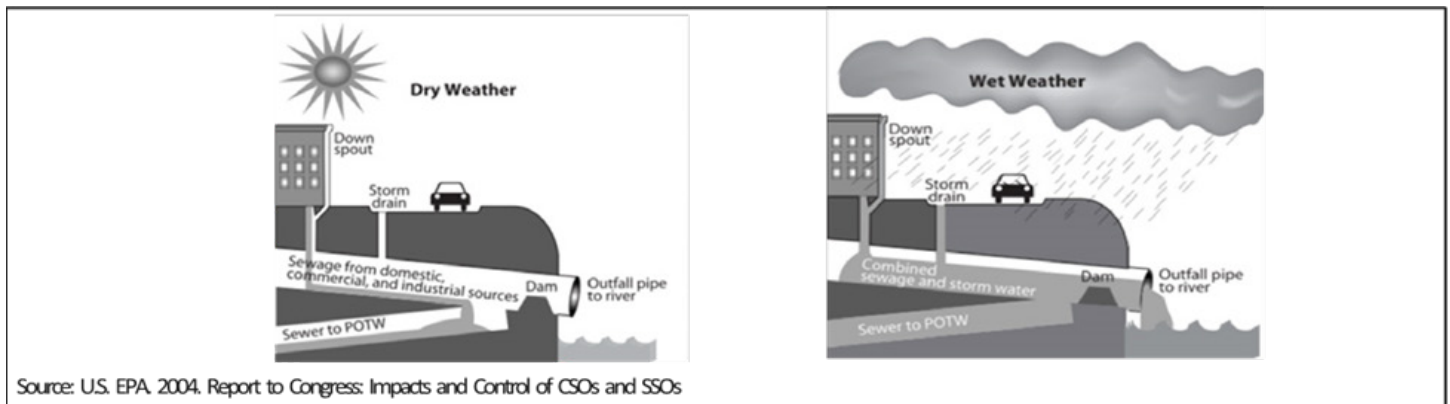
continued >>

WHAT ARE CSSS & CSOS?

In some older communities, there are sewerage systems that combine stormwater from rain or snowmelt with raw sewage from homes, businesses, and industries in one pipe. This is called a combined sewer system (CSS). The MWRA and four of the Co-Permittees – Boston, Cambridge, Somerville, and Chelsea have combined sewer systems. Usually, the wastewater goes to DITP for treatment before it is discharged into Massachusetts Bay. But when there is a lot of rain or snowmelt, there is too much wastewater for one pipe, and untreated sewage combined with stormwater, may get released to a river through CSOs. This combined wastewater may contain human waste, industrial waste, debris, and pollutants from stormwater. Sometimes, this combined wastewater has backed up into people's basements.

RECEIVING WATERS

The MWRA DITP discharges treated wastewater through an outfall pipe into Massachusetts Bay, a marine water. The MWRA DITP outfall begins about 8 miles from the shore; so far offshore that the receiving water is not defined in the Massachusetts Water Quality Standards, though it is within state waters.



There are forty-seven (47) combined sewer overflow (CSO) outfalls that discharge into eight waterbodies. CSO discharges include; nine (9) into Boston Inner Harbor, ten (10) into the Charles River, ten (10) into Fort Point Channel, five (5) into North Dorchester Bay, six (6) into Alewife Brook, one (5) into in the Mystic River, one (1) into Muddy River and one (1) into Chelsea River. A page showing the CSO discharge locations is on page 5.

NEW PERMIT REQUIREMENTS IN DRAFT PERMIT

The new limits and reporting requirements in the permit for the MWRA DITP include:

- New 85% removal limits for Carbonaceous Biochemical Oxygen Demand (CBOD5) and Total Suspended Solids (TSS).
- The effluent flow limit in the Draft Permit will be less.
- A new bacteria limit is introduced.
- Quarterly monitoring and reporting for Per- and Polyfluoroalkyl Substances (PFAS) will also be required.
- Quarterly monitoring and reporting for cadmium, copper, nickel, lead, zinc, total organic carbon, and salinity will also be required.

PROPOSED ENHANCED NOTIFICATION REQUIREMENTS

The proposed changes to the permit include requirements for notifying the public about CSO discharges. If there is a probable CSO discharge, notice will be given to the public within two hours. Within 24 hours of the end of the discharge, a supplemental notification confirming the occurrence of the discharge, the CSO outfall number, and the start and stop times of the discharge will be given. Additionally, an annual report summarizing CSO activation information will be posted by April 30th of each year.

HOW TO REVIEW AND COMMENT ON THE DRAFT PERMITS

Copies of the draft permits and fact sheets can be obtained through EPA's website at <https://www.epa.gov/npdes-permits/epas-permit-massachusetts-water-resources-authority-mwra-outfall>. During the public notice period, EPA will receive comments from interested parties and encourages your participation in the public process and this opportunity to provide comments on the draft permit requirements during this period. Once EPA considers and responds to all public comments, the permit will be finalized and will replace the existing permit for MWRA DITP. Please contact Michele Barden at 617-918-1539 or barden.michele@epa.gov with any questions regarding the draft permits or the public comment process.

COMMENTING ON THE DRAFT PERMIT AND EJ ISSUES

During EPA's July 12, 2023, virtual public informational meeting, EPA will present an overview of the draft permit and will respond to clarifying questions from meeting participants.

The public may provide formal comments in writing by email or by regular mail beginning May 31, through the close of the public comment period on July 31, 2023. All written comments must be received by EPA or postmarked by **July 31, 2023**; EPA will respond in writing to all significant issues raised during the public comment period when EPA issues the final permit.

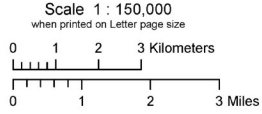
Submit Comments on the draft permit:

Email written comments to: barden.michele@epa.gov

Or print and mail to:

Michele Barden
EPA Region 1
5 Post Office Square, Suite 100 (06-1)
Boston, MA 02109

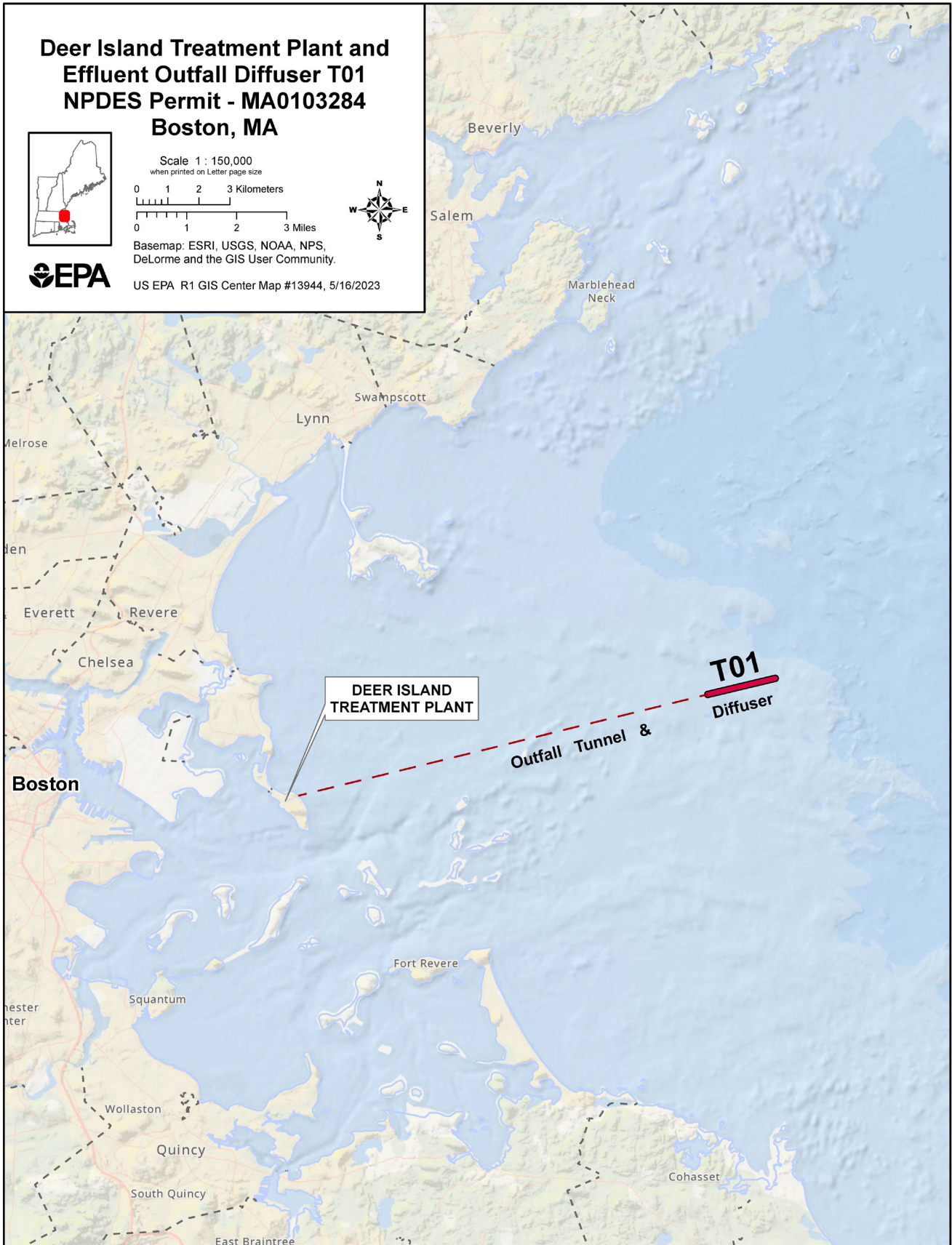
**Deer Island Treatment Plant and
Effluent Outfall Diffuser T01
NPDES Permit - MA0103284
Boston, MA**



Basemap: ESRI, USGS, NOAA, NPS,
DeLorme and the GIS User Community.



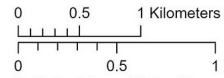
US EPA R1 GIS Center Map #13944, 5/16/2023



Combined Sewer Outfalls

Owner/Operator

- Boston Water and Sewer Commission
- City of Cambridge
- City of Chelsea
- City of Somerville
- Massachusetts Water Resources Authority
- MWRA/City of Somerville



Scale 1 : 57,000
when printed on Letter page size

Outfalls: Mass. Water Resources Authority and the CSO-responsible co-permittees (Somerville, Cambridge, Chelsea and Boston)
Basemap: ESRI, USGS, NOAA, NPS, DeLorme and the GIS User Community.



US EPA R1 GIS Center Map #13944, 5/16/2023

