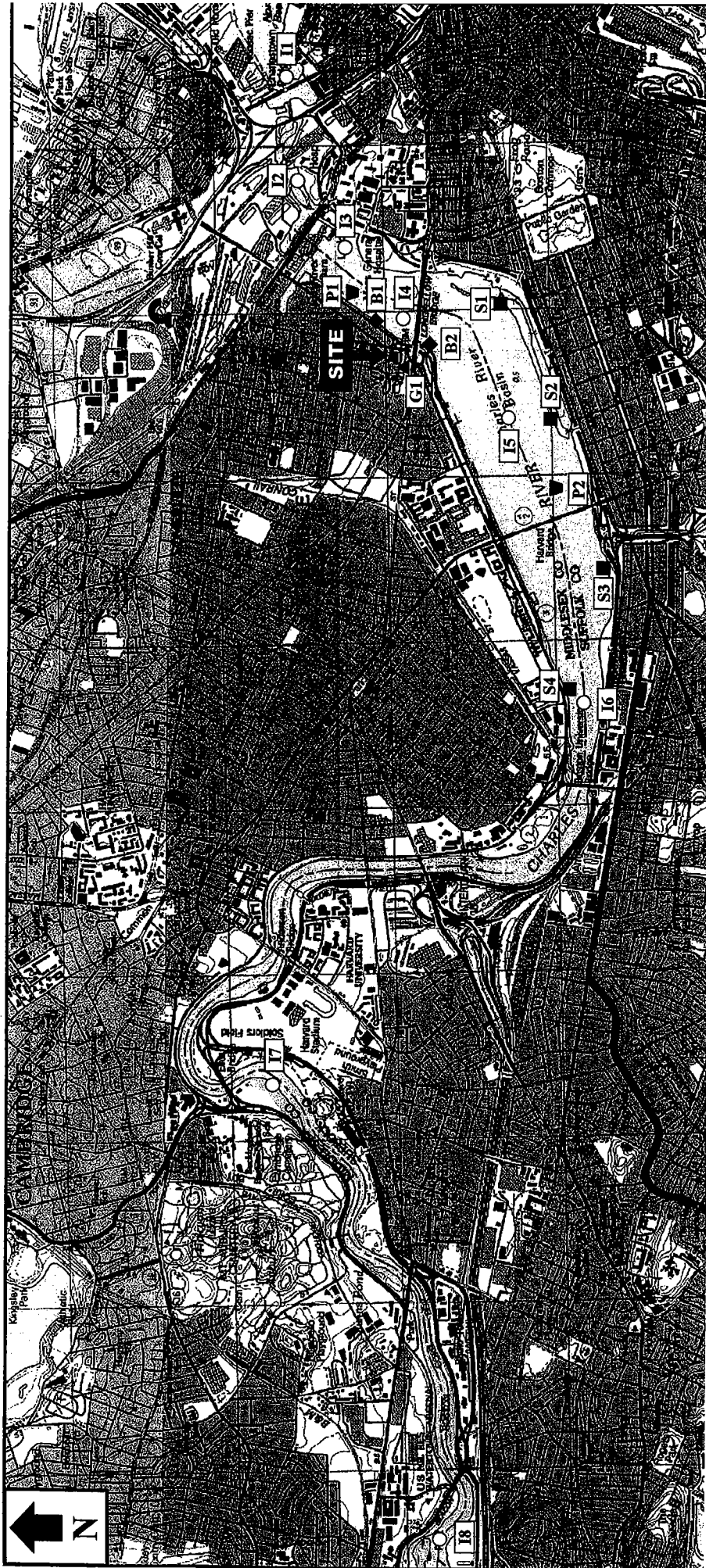
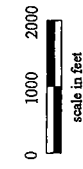


ATTACHMENT H



BASE MAP IS A PORTION OF THE FOLLOWING 7.5' x 15' USGS TOPOGRAPHIC QUADRANGLES: BOSTON NORTH, MA 1987, BOSTON SOUTH, MA, 1985



LEGEND	
○	ICHTHYOPLANKTON STATION
I1	Below Locks
I2	Museum
I3	Old Channel
I4	River
I5	MIT
I6	Hyatt
I7	Soldiers Field
I8	Marina
■	BEACH SEINE SITE
S1	Fielder
S2	Lagoon
S3	Storrow
S4	Hyatt
◆	BENTHIC TRANSECT
B1	Diffuser
B2	Longfellow Bridge
▲	GILLNET SAMPLE STATION
G1	Intake Gillnet
P1	Selma Area
P2	Harvard Bridge

KENDALL SQUARE STATION
EQUIPMENT UPGRADE PROJECT

KENDALL BIOLOGICAL
MONITORING LOCATIONS

KENDALL SQUARE STATION
CAMBRIDGE, MASSACHUSETTS