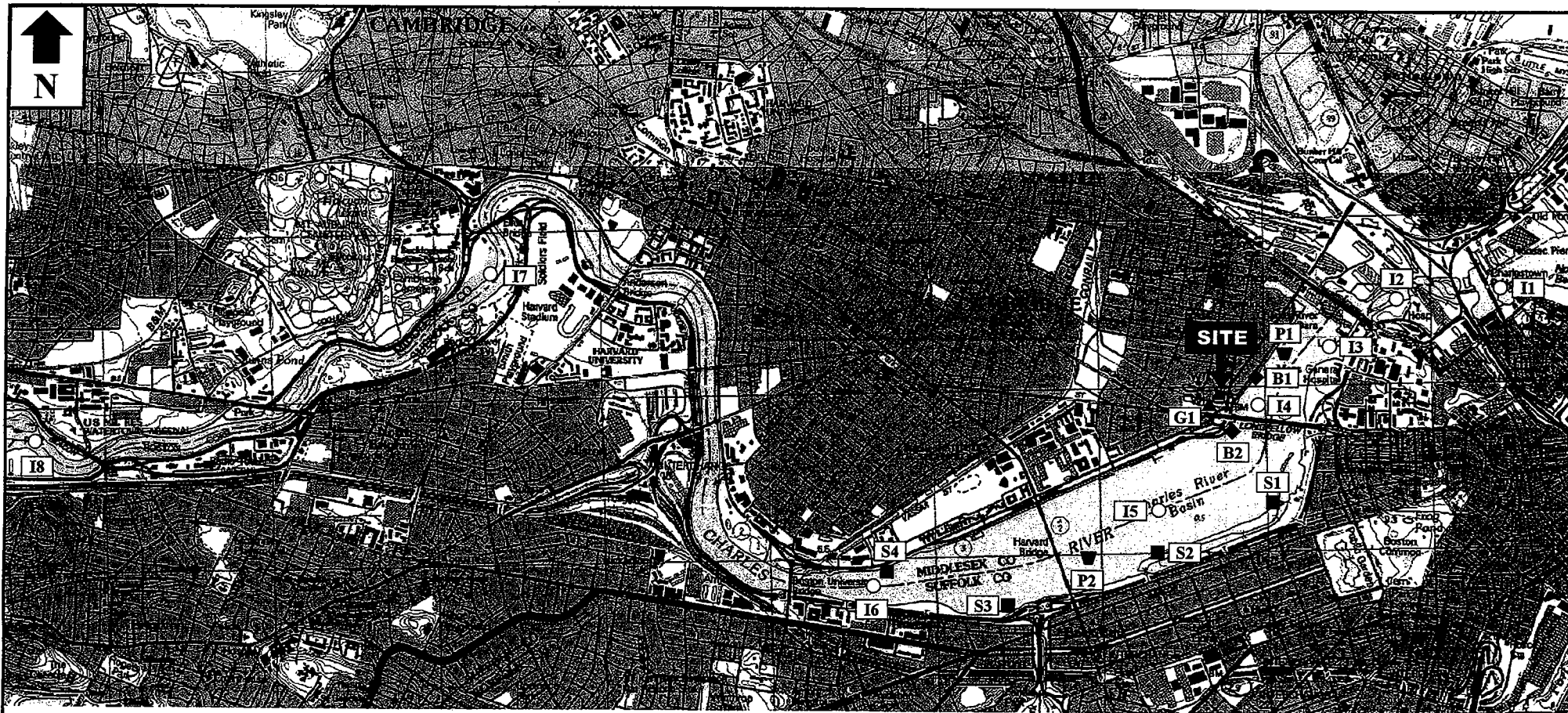


ATTACHMENT H



BASE MAP IS A PORTION OF THE FOLLOWING 7.5' x 15' USGS TOPOGRAPHIC QUADRANGLES: BOSTON NORTH, MA 1987, BOSTON SOUTH, MA, 1985

LEGEND

○ ICHTHYOPLANKTON STATION

- I1 Below Locks
- I2 Museum
- I3 Old Channel
- I4 River
- I5 MIT
- I6 Hyatt
- I7 Soldiers Field
- I8 Marina

■ BEACH SEINE SITE

- S1 Fieldler
- S2 Lagoon
- S3 Storrow
- S4 Hyatt

◆ BENTHIC TRANSECT

- B1 Diffuser
- B2 Longfellow Bridge

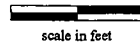
▲ GILLNET SAMPLE STATION

- G1 Intake Gillnet

P1 Seine Area

- P2 Harvard Bridge

0 1000 2000



scale in feet

**KENDALL SQUARE STATION
EQUIPMENT UPGRADE PROJECT**

**KENDALL BIOLOGICAL
MONITORING LOCATIONS
KENDALL SQUARE STATION
CAMBRIDGE, MASSACHUSETTS**