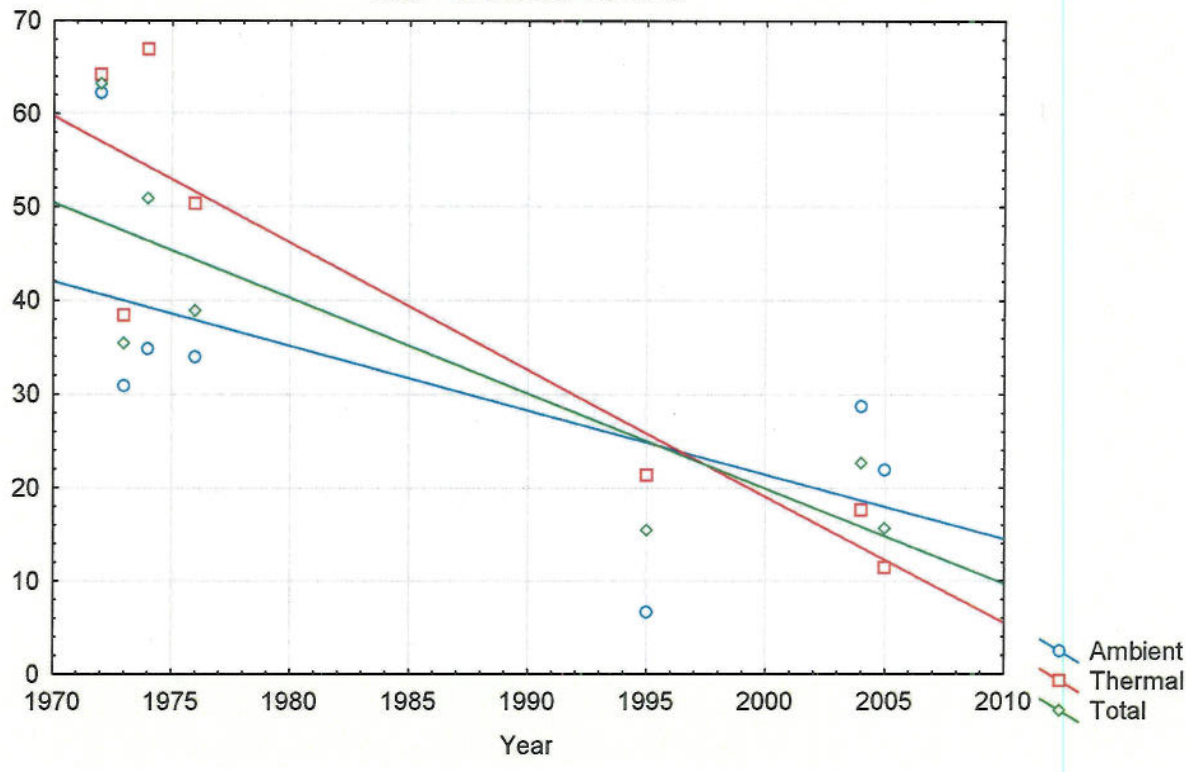


Scatterplot (Bowcpuestats.sta 4v*34c)

Ambient = $1395.6017 - 0.6871 \cdot x$
Thermal = $2730.2737 - 1.3556 \cdot x$
Total = $2055.5862 - 1.0179 \cdot x$



Stat summary by CPUE Fish(1).xls
 data used for scatter plot (Fig 5-1)

	1972	1973	1974	1976	1995	2004	2005
brown bull	2.15	0.55	0.6	0.2	0	0	0
chain picke	0.65	0.3	0.4	0.2	0.1	0.15	0.15
fallfish	1.7	0.5	0.05	0	0.45	1.45	1.3
golden shir	0.3	0.25	0.45	0	0.2	1.35	0.4
largemouth	5.65	0.85	6.55	2.65	6.05	9.55	6.1
pumpkinse	37.65	20.2	25.4	19.45	0.95	0.7	0.9
redbreast s	4.5	2.8	5.5	8	5.9	2.65	1.85
smallmout	0.8	4.15	3.1	4.9	1.4	5.35	1.9
white sucki	1.4	0.2	4.65	2	0.2	0.75	0.4
yellow bull	0.1	0.1	0.2	0.45	0	0	0
yellow perc	8.3	5.5	3.95	1.05	0.2	0.65	2.6
total CPUE	63.2	35.4	50.85	38.9	15.45	22.6	15.6

	1972	1973	1974	1976	1995	2004	2005
brown bull	1.8	0.75	0.6	0.07	0	0	0
chain picke	0.8	0.25	0.7	0.14	0	0.22	0.13
fallfish	3.4	1.13	0.1	0	1.13	2.89	2.88
golden shir	0.1	0.13	0.8	0	0	3	0.5
largemouth	6.5	0.88	5.2	2.64	3.13	10.56	8.63
pumpkinse	31.9	16.88	11.4	15.43	0	0.33	0.5
redbreast s	1.7	1.63	2.6	6.57	0.88	1.11	1.88
smallmout	0.6	1.75	1.1	4.9	0.75	7.67	1.25
white sucki	2.4	0.5	9	2.71	0.5	1.67	0.88
yellow bull	0.2	0	0.4	0.43	0	0	0
yellow perc	12.8	7	2.9	1.07	0.25	1.22	5.25
total CPUE	62.2	30.9	34.8	33.96	6.64	28.67	21.9

	1972	1973	1974	1976	1995	2004	2005
brown bull	2.5	0.42	0.6	0.5	0	0	0
chain picke	0.5	0.33	0.1	0.33	0.17	0.09	0.17

