

#37



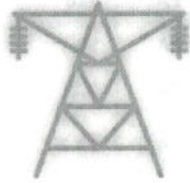
Employers

Get candidates to fill your engineering and/or technical jobs within 24-48 hours!

Contact us now! or call 1.800.659.5639

HOME | SALARY SURVEYS | NEWS | STOCKS | ALL POWERPLANT JOBS

Send Resume | Job Alerts | Resources | Register >



The most popular Source for everything you need to know about Power Plant Jobs.

Search 2000 + Worldwide Engineering Jobs and Power Plant Jobs

Example: job number, keyword, etc.

State --

SEARCH

Advanced Search

More Ways to find Power Plant Jobs

- Advanced Search**
- New Jobs Last 10 Days**
- Search by Industry**

- > Hot Power Plant Jobs
- > Jobs sorted by number
- > Job Alerts

Other Job Types

- > Contract Jobs
- > Power Plant Jobs willing to sponsor
- > Executive Jobs
- > IT Jobs
- > Power Generation Power Plant Jobs

Resources

- > Resume writing help
- > Salary Surveys
- > Take Salary Survey
- > Salary Trends by Job Title
- > Opinion Polls

Free Resume Help for Power Plant Jobs

- > Resume writing tips
- > Resume examples
- > Sample resumes
- > Resume templates
- > Resume format



PA Power Plants

Utility	Plant Name	City	State	MegaWatt
AES Beaver Valley	AES Beaver Valley	Beaver	PA	149
AES Hoytdale LLC	Partners Beaver Valley	Beaver	PA	0
AES Prescott LLC	AES Hoytdale LLC	Lebanon	PA	777.6
Allegheny Electric Coop Inc	AES Ironwood LLC	Juniata	PA	21.7
Allegheny Energy Supply Co LLC	William F Matson Generating Station	Armstrong	PA	319.4
Allegheny Energy Supply Co LLC	Armstrong Power Station	Greene	PA	1728
Allegheny Energy Supply Co LLC	Hatfields Ferry Power Station	Washington	PA	448.6
Allegheny Energy Supply Co LLC	Mitchell Power Station	Allegheny	PA	215.3
Allegheny Energy Supply Co LLC	Springdale Power Station	Allegheny	PA	87.6
Allegheny Energy Supply Co LLC	Allegheny Energy Units 1 and 2	Fayette	PA	87.6
Allegheny Energy Supply Co LLC	Allegheny Energy Units 8 and 9	Fayette	PA	51.2
Allegheny Energy Supply Co LLC	Lake Lynn Power Station	Franklin	PA	87.6
Allegheny Energy Supply Co LLC	Allegheny Energy Units 12 and 13	Washington	PA	556
AmerGen Energy Co LLC	Allegheny Energy Units 3 4 and 5	Dauphin	PA	837
American Eagle Paper Mills	Three Mile Island	Blair	PA	17.5
American Hydro Power Co	American Eagle Paper Mills	Susquehanna	PA	1.5
American Hydro Power PLP	Oakland Dam Hydroelectric	Huntingdon	PA	2.8
American Ref-Fuel Co of DE Valley	Warrior Ridge Hydro	Delaware	PA	90
Armstrong Energy LP LLLP	American Ref-Fuel of Delaware Valley	Armstrong	PA	688
Babcock and Brown Power Op Partners LLC	Armstrong	Luzerne	PA	0
Beaver Falls Municipal	Wind Park Bear Creek	Beaver	PA	5.2
	Townsend Hydro			

- > Resume cover letter
- > Samples for engineers
- > Learn how to write a resume!

Paid Resume Services for Power Plant Careers

- > Resume services for engineers
- > Resume writing services
- > Resume builder services
- > Resume posting services
- > Resume cover letter tips
- > Resume writing tips
- > Job Search tips
- > Executive Resume
- > Technical Resume
- > Sales Resume
- > Marketing Resume
- > Entry-Level Resume
- > Jobs via RSS
- >

Auth					
Beechwood Energy Inc	Beechwood Energy Resources	Schuylkill	PA	0	
Bellevue Associates	The Bellevue	Philadelphia	PA	1.5	
Bio-Energy Partners	Stowe Power Production Plant	Montgomery	PA	6	
Bio-Energy Partners	Lakeview Gas Recovery	Erie	PA	6	
Bio-Energy Partners	Modern Landfill Production Plant	York	PA	9	
Bucknell University	Bucknell University	Union	PA	5.9	
Calpine Construction Fin Co LP	Ontelaunee Energy Center	Berks	PA	728	
Cambria CoGen Co	Cambria Cogen	Cambria	PA	98	
Chambersburg Borough of	Falling Spring	Franklin	PA	7.2	
Chambersburg Borough of	Orchard Park	Franklin	PA	23.2	
CHI Energy Inc	Beaver Valley Patterson Dam	Beaver	PA	1.2	
Colmac Clarion Inc	Piney Creek Project	Clarion	PA	36.2	
Conectiv Bethlehem Inc	Bethlehem Power Plant	Northampton	PA	1300	
Conectiv Mid-Merit Inc	Delta Power Plant	York	PA	0	
Conectiv Mid-Merit Inc	East Donegal Power Plant	Lancaster	PA	0	
Covanta Lancaster Inc	Lancaster County Resource Recovery	Lancaster	PA	35.7	
Dominion Fairless Inc.	Fairless Energy Center	Bucks	PA	1338	
Duke Energy Fayette LLC	Fayette Energy Facility	Fayette	PA	677	
D/R Hydro Co	Yough Hydro Power	Somerset	PA	12.2	
Ebensburg Power Co	Ebensburg Power Electro Generators Cogeneration	Cambria	PA	57.6	
Electro-Generators LLC	Endless Mountains Energy LLC	Crawford	PA	0	
Endless Mountains Energy LLC	North East Cogeneration Plant	Bradford	PA	0	
Energy Systems North East LLC	Erie Coke	Erie	PA	88.2	
Erie Coke Corp	Chester Generating Station	Erie	PA	2.5	
Exelon Generation Co LLC	Cromby Generating Station	Chester	PA	55.8	
Exelon Generation Co LLC	Delaware Generating Station	Chester	PA	420.2	
Exelon Generation Co LLC	Philadelphia Generating Station	Philadelphia	PA	392.1	
Exelon Generation Co LLC	Eddystone Generating Station	Delaware	PA	1568.8	
Exelon Generation Co LLC	Falls	Delaware	PA	63.6	
Exelon Generation Co LLC	Moser Generating Station	Bucks	PA	63.6	
Exelon Generation Co LLC	Muddy Run	Montgomery	PA	63.6	
Exelon Generation Co LLC	Peach Bottom	Lancaster	PA	800	
Exelon Generation Co LLC	Richmond Generating Station	York	PA	2304	
Exelon Generation Co LLC	Schuylkill Generating Station	Philadelphia	PA	131.6	
Exelon Generation Co LLC	Southwark	Philadelphia	PA	232.9	
Exelon Generation Co LLC	Limerick	Philadelphia	PA	74.4	
Exelon Generation Co LLC	Pennsbury	Montgomery	PA	2276	
Exelon Generation Co LLC	Fairless Hills	Bucks	PA	6	
Exelon Generation Co LLC	Croydon CT Generating Station	Bucks	PA	60	
Exelon Generation Co LLC	Mill Run Windpower	Bucks	PA	546.4	
FPL Energy FPL E Mill Run WIndpower LLC	Mill Run Windpower	Somerset	PA	15	
FPL Energy Marcus Hook	FPL Energy Marcus Hook	Delaware	PA	836.1	

LP	LP	County	PA	
FPL Energy Meyersdale Windpower LLC	Meyersdale Windpower	Somerset	PA	33
FPL Energy MH50 LP	Marcus Hook Refinery Cogen	Delaware	PA	50.5
FPL Energy Pennsylvania Wind LLC	Green Mountain Wind Farm	Somerset	PA	10.4
General Electric Co	General Electric Diesel Engine Plant	Mercer	PA	4.4
General Electric Erie Power	General Electric Erie PA Power	Erie	PA	37
Gilberton Power Co	John B Rich Memorial Power Station	Schuylkill	PA	88.4
Grays Ferry Cogen Partnership	Grays Ferry Cogeneration	Philadelphia	PA	192.6
Grubb and Ellis Management Services Inc.	PPG Place	Allegheny	PA	2.3
Handsome Lake Energy LLC	Handsome Lake Energy LLC	Venango	PA	285
Harrisburg Authority	Harrisburg Facility	Dauphin	PA	8.2
Indiana University of Penn	Indiana University of Pennsylvania	Indiana	PA	24.4
Inter-Power/AhlCon Partners L.P.	Colver Power Project	Cambria	PA	131.1
International Paper Co	International Paper Erie Mill	Erie	PA	44.5
International Paper Co	International Paper Lock Haven Mill	Clinton	PA	34.7
Jefferson Smurfit Corp	Jefferson Smurfit JSC	Philadelphia	PA	12
Keystone Recovery Inc	Keystone Landfill	Lackawanna	PA	5.6
Kimberly-Clark Corp	Chester Operations	Delaware	PA	67
Koppers Inc - Susquehanna	Koppers Susquehanna Plant	Lycoming	PA	12.5
Lebanon Methane Recovery Inc	Lebanon Methane Recovery	Lebanon	PA	1.2
Limerick Partners LLC	Linfield Energy Center	Montgomery	PA	0
Lower Mount Bethel Energy LLC	Lower Mount Bethel Energy	Northampton	PA	658
Merck and Co Inc-West Point	West Point	Mongomery	PA	77.3
Merck and Company Inc - Cherokee	Cherokee Plant	Northumberland	PA	2.5
Metropolitan Edison Co	York Haven	Dauphin	PA	19.6
Midwest Generations EME LLC	Homer City Station	Indiana	PA	2012
MM SKB Energy LLC	SKB Landfill	Montgomery	PA	1.1
Montenay Montgomery LP	Montenay Montgomery LP	Montgomery	PA	32.1
Mount Carmel Cogen Inc	Foster Wheeler Mt Carmel Cogen	Northumberland	PA	46
NEO Chester Gen LLC	Crozer Chester Medical Center	Delaware	PA	3.1
Newman and Co Inc	Newman	Philadelphia	PA	1.8
Norfolk Southern Corp	Juniata Locomotive Shop	Blair	PA	4
North American Energy Services Company	Liberty Electric Power Plant	Delaware	PA	614
Northampton Generating Co LP	Northampton Generating LP	Northampton	PA	134
Northeastern Power Co	Kline Township Cogen Facility	Schuylkill	PA	57.5
NRG Energy Center Paxton Inc	Paxton Creek Cogeneration	Dauphin	PA	12.6

Orion Power Holdings Inc	Elrama Power Plant	Washington	PA	510
Orion Power Holdings Inc	New Castle Plant	Lawrence	PA	424.4
Orion Power Holdings Inc	Brunot Island	Allegheny	PA	417.4
Orion Power Midwest LP	F R Phillips	Allegheny	PA	410
Orion Power Midwest LP	Cheswick Power Plant	Allegheny	PA	630
P H Glatfelter Co	P H Glatfelter	York	PA	109.5
Panda Global Services	Panda Perkiomen Generating Station	Montgomery	PA	0
Panther Creek Partners	Panther Creek Energy Facility	Carbon	PA	94
PEI Power Corp	Archbald Power Station	Lackawanna	PA	83.7
Penn Power Systems	Philadelphia Water Department Southwest	Philadelphia	PA	11
Penn Power Systems	PWD Northwest Facility	Philadelphia	PA	11
Pennsylvania Electric Co	Seneca	Warren	PA	469
Pennsylvania Power Co	Beaver Valley	Beaver	PA	1846.8
Pennsylvania Power Co	Bruce Mansfield	Beaver	PA	2741.1
Pennsylvania Renewable Resources	Conemaugh Hydro Plant	Westmoreland	PA	15
PPL Brunner Island LLC	PPL Brunner Island	York	PA	1566.8
PPL Eden LLC	PPL Eden Generating Facility	Lancaster	PA	0
PPL Hatfield LLC	PPL Hatfield Generating Facility	Montgomery	PA	0
PPL Holtwood LLC	PPL Holtwood	Lancaster	PA	107.2
PPL Martins Creek LLC	PPL Martin Creek LLC Allentown	Lehigh	PA	64
PPL Martins Creek LLC	PPL Martins Creek LLC Fishbach	Schuylkill	PA	37
PPL Martins Creek LLC	PPL Martins Creek Harrisburg	Union	PA	64
PPL Martins Creek LLC	PPL Martins Creek LLC Harwood	Lehigh	PA	32
PPL Martins Creek LLC	PPL Martins Creek LLC Jenkins	Luzerne	PA	32
PPL Martins Creek LLC	PPL Martins Creek LLC Lock Haven	Clinton	PA	18.5
PPL Martins Creek LLC	PPL Martins Creek	Northampton	PA	2112.8
PPL Martins Creek LLC	PPL HW Wallenpaupack	Northampton	PA	40
PPL Martins Creek LLC	PPL Martins Creek LLC West Shore	Cumberland	PA	37
PPL Martins Creek LLC	PPL Martins Creek LLC Williamsport	Union	PA	32
PPL Montour LLC	PPL Montour	Montour	PA	1641.7
PPL Susquehanna LLC	PPL Susquehanna	Columbia	PA	2596
PPL Upper Hanover LLC	PPL Upper Hanover Generating Facility	Philadelphia	PA	0
PPL West Earl LLC	PPL West Earl Peaking Facility	Lancaster	PA	0
Procter and Gamble Ppr Prdts Co	Procter and Gamble Mehoopany Mill	Wyoming	PA	53.6
Reliant Energy Hunterstown LLC	Hunterstown	Adams	PA	898
Reliant Energy Mid- Atlantic PH	Hamilton	Adams	PA	19.6
Reliant Energy Mid- Atlantic PH	Hunterstown	Adams	PA	60
Reliant Energy Mid- Atlantic PH	Mountain	Cumberland	PA	54
Reliant Energy Mid- Atlantic PH	Ortanna	Adams	PA	27
Reliant Energy Mid-				

Atlantic PH	Portland	Northampton	PA	621
Reliant Energy Mid-Atlantic PH	Shawnee	Monroe	PA	20
Reliant Energy Mid-Atlantic PH	Titus	Berks	PA	261
Reliant Energy Mid-Atlantic PH	Tolna	York	PA	54
Reliant Energy Mid-Atlantic PH	Conemaugh	Indiana	PA	1883.2
Reliant Energy Mid-Atlantic PH	Blossburg	Tioga	PA	24
Reliant Energy Mid-Atlantic PH	Piney	Clarion	PA	30
Reliant Energy Mid-Atlantic PH	Seward	Indiana	PA	218.2
Reliant Energy Mid-Atlantic PH	Shawville	Clearfield	PA	632
Reliant Energy Mid-Atlantic PH	Warren	Warren	PA	137.1
Reliant Energy Mid-Atlantic PH	Wayne	Crawford	PA	53
Reliant Energy Mid-Atlantic PH	Keystone	Armstrong	PA	1884
Reliant Energy Seward LLC	Seward	Indiana	PA	585
River Hill Power Company LLC	River Hill Power Company LLC	Clearfield	PA	0
Rolling Hills Landfill LLC	Rolling Hills	Berks	PA	0
Safe Harbor Water Power Corp	Safe Harbor	Lancaster	PA	417.5
Schuylkill Energy Resource Inc	St Nicholas Cogen Project	Schuylkill	PA	117
Scrubgrass Generating Co LP	Scrubgrass Generating	Venango	PA	94.7
Shenango Inc	Shenango Neville Island Coke Works	Allegheny	PA	11.3
Sithe Energies Inc	Allegheny Hydro Partners Ltd	Armstrong	PA	9.2
Sithe Energies Inc	Allegheny No 6 Hydro Partners	Armstrong	PA	9.2
Sithe Energies Inc	Allegheny Hydro No 8 LP	Armstrong	PA	13.6
Sithe Energies Inc	Allegheny Hydro No 9 LP	Armstrong	PA	17.8
Somerset Windpower LLC	FPL E Somerset Windpower LLC	Somerset	PA	9
Sonoco Products Co	Sonoco Products	Chester	PA	2.5
STI Capital Co	York Cogen Facility	York	PA	68.8
Sunbury Generation LLC	WPS Energy Servs Sunbury Gen	Snyder	PA	477.4
Sunoco Refining and Supply Co	Philadelphia Refinery	Philadelphia	PA	30
Trigen-Philadelphia Engy Corp	Schuylkill Station (Turbine Gen #3)	Philadelphia	PA	55
UGI Development Co	Hunlock Power Station	Luzerne	PA	93.9
United States Steel-Clairton	Clairton Works	Allegheny	PA	31
United States Steel-Mon Valley	Mon Valley Works	Allegheny	PA	52.5
United Supply Corp	Minersville	Fulton	PA	0
Viking Energy Corp	Viking Energy of Northumberland	Northumberland	PA	18
Waste Management Inc	Green Knight Energy Center	Northampton	PA	9.9
Waymart Wind LP	Waymart Wind	Wayne	PA	64.5

Weyerhaeuser Wheelabrator Environmental Systems Wheelabrator Falls Inc Williams Generation Co- Hazelton WPS Power Development York County Solid W and R Auth Zapco Energy Tactics Corp Zinc Corp of America	Johnsonburg Mill Wheelabrator Frackville Energy Wheelabrator Falls Hazelton WPS Westwood Generation LLC York County Resource Recovery Taylor Energy Partners LP G F Weaton Power Station	Elk Schuylkill Bucks Luzerne Schuylkill York Lackawanna Beaver	PA PA PA PA PA PA PA PA	60 48 53.3 171.5 36 36.5 3.1 120
--	---	---	--	---

[Privacy/Security](#) | [Copyright](#) | Careers@ThinkJobs.com | [Engineering Job Search Agent](#) | [Contact Info](#) | [Site Map](#) | [Help](#)

[Alabama Engineering Jobs](#) | [Alaska Engineering Jobs](#) | [Arizona Engineering Jobs](#) | [Arkansas Engineering Jobs](#) | [California Engineering Jobs](#) | [Colorado Engineering Jobs](#) | [Connecticut Engineering Jobs](#) | [Delaware Engineering Jobs](#) | [Florida Engineering Jobs](#) | [Georgia Engineering Jobs](#) | [Hawaii Engineering Jobs](#) | [Idaho Engineering Jobs](#) | [Illinois Engineering Jobs](#) | [Indiana Engineering Jobs](#) | [Iowa Engineering Jobs](#) | [Kansas Engineering Jobs](#) | [Kentucky Engineering Jobs](#) | [Louisiana Engineering Jobs](#) | [Maine Engineering Jobs](#) | [Maryland Engineering Jobs](#) | [Massachusetts Engineering Jobs](#) | [Michigan Engineering Jobs](#) | [Minnesota Engineering Jobs](#) | [Mississippi Engineering Jobs](#) | [Missouri Engineering Jobs](#) | [Montana Engineering Jobs](#) | [Nebraska Engineering Jobs](#) | [Nevada Engineering Jobs](#) | [New Hampshire Engineering Jobs](#) | [New Jersey Engineering Jobs](#) | [New Mexico Engineering Jobs](#) | [New York Engineering Jobs](#) | [North Carolina Engineering Jobs](#) | [North Dakota Engineering Jobs](#) | [Ohio Engineering Jobs](#) | [Oklahoma Engineering Jobs](#) | [Oregon Engineering Jobs](#) | [Pennsylvania Engineering Jobs](#) | [Rhode Island Engineering Jobs](#) | [South Carolina Engineering Jobs](#) | [South Dakota Engineering Jobs](#) | [Tennessee Engineering Jobs](#) | [Texas Engineering Jobs](#) | [Utah Engineering Jobs](#) | [Vermont Engineering Jobs](#) | [Virginia Engineering Jobs](#) | [Washington Engineering Jobs](#) | [West Virginia Engineering Jobs](#) | [Wisconsin Engineering Jobs](#) | [Wyoming Engineering Jobs](#)

Visit our Network of related Engineering and Power Plant Job Sites:

ThinkEnergyGroup.com | PowerPlantJobs.com | ThinkJobs.com | ResumeLogic.com | EnergyJobSearch.com | ThinkSource.com