



**OFICINA DE PLANIFICACIÓN Y ORDENACIÓN TERRITORIAL**

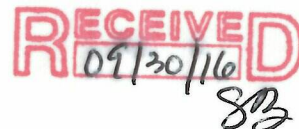
Gobierno Municipal Autónomo de Trujillo Alto

PO Box 1869, Trujillo Alto, PR 00977

Tel.: 787-761-0172 ext. 2174 787-761-2559

***A TRAVÉS DE CORREO ELECTRÓNICO***

September 28<sup>th</sup>, 2016



Nancy Rodríguez  
MPCB Chief  
Caribbean Environmental Protection Division  
City View Plaza II – Suite 7000  
#48 Rd. 165 Km 1.2  
Guaynabo, PR 00968-8069

**Attention: Eng. Sergio Bosques - Regional Stormwater Coordinator**

**Notice of Intent for General Permit for Discharges from Small Municipal Separate Storm Sewer Systems – Municipality Of Trujillo Alto-PR40003**

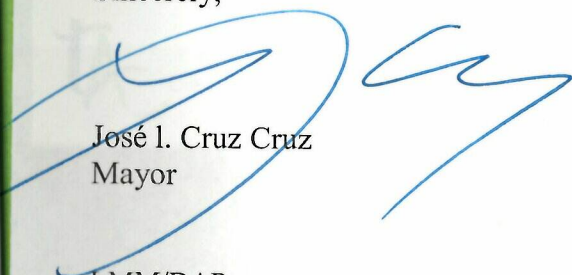
Dear engineer Bosques:

Greetings from the administration of the Autonomous Municipal Government of Trujillo Alto.

To continue implementing and updating our existing Stormwater Management Program, we submit this Notice of Intent (NOI) for coverage under the Small Municipal Separate Storm Sewer Systems (MS4) General Permit.

We reaffirm our commitment to manage effectively the MS4 in compliance with established standards. If you have any questions concerning this matter you can contact Planner Deborah Andrade Pizarro, Director of the Land Use and Planning Office at 787-761-2259 or via email at [dandrade@trujilloalto.gov.pr](mailto:dandrade@trujilloalto.gov.pr).

Sincerely,



José I. Cruz Cruz  
Mayor

LMM/DAP



# NOTICE OF INTENT

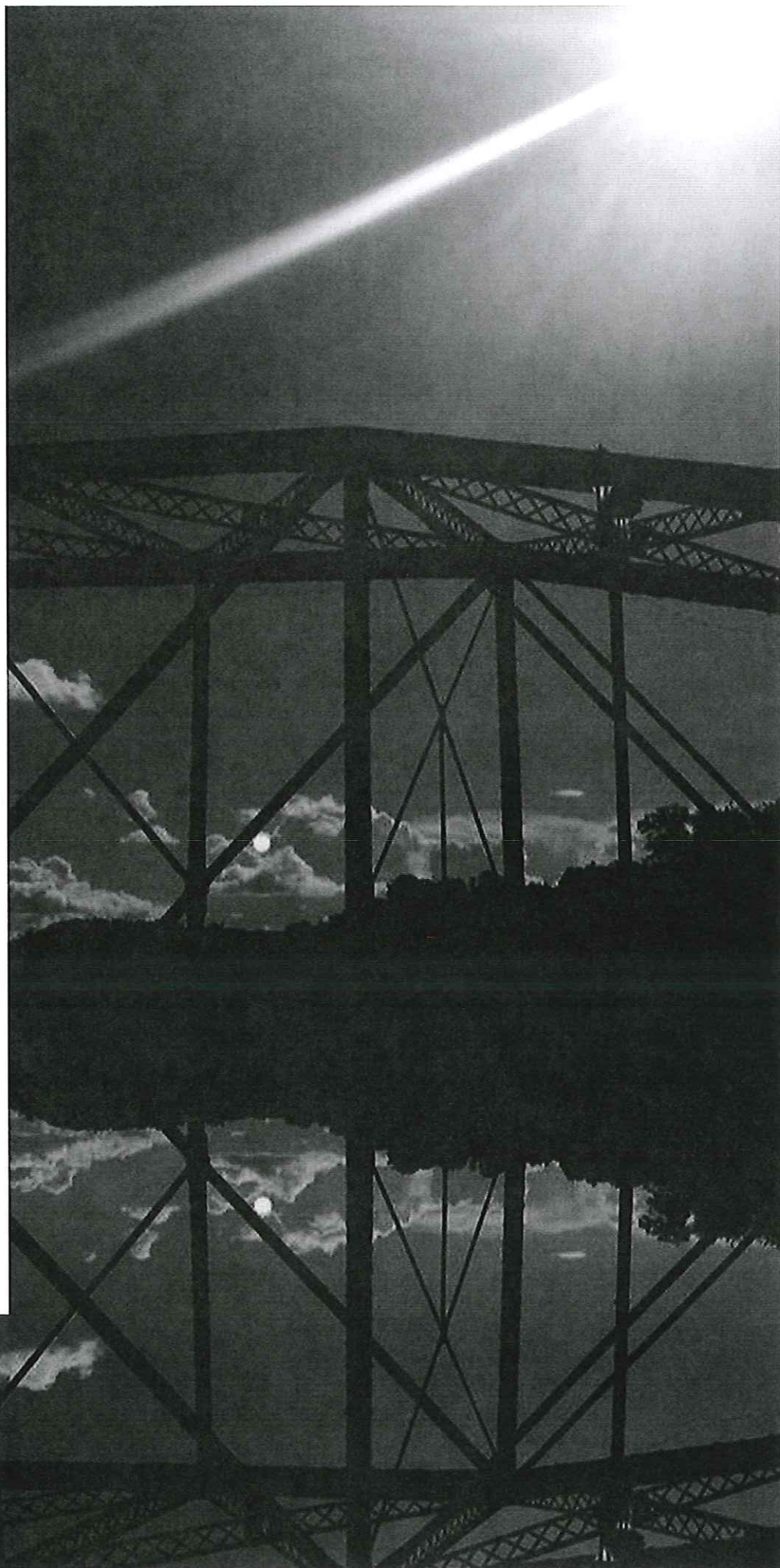
## NATIONAL POLLUTANT DISCHARGE ELIMINATION SYSTEM NPDES

Notice of Intent  
Small Municipal Separate Storm  
Sewer System (MS4)  
General Permit (PRR040003)  
for Puerto Rico

Hon. José Luis Cruz Cruz  
Mayor



Autonomous Municipal  
Government of Trujillo Alto  
Office of Planning and Land Use  
September 2016



United States Environmental Protection Agency  
National Pollutant Discharge Elimination System  
Notice of Intent (NOI) for coverage under the Small Municipal Separate  
Storm Sewer System (MS4) General Permit (PRR040003) for Puerto Rico

## Index

	Page
Part A: General Information .....	1
Part B: Primary MS4 Program Manager Contact Information .....	1
Part C: Eligibility Determination .....	1
Part D: Map / Boundaries .....	3
Part E: MS4 Infrastructure .....	4
Part F: Bylaw / Ordinance Development .....	4
Part G: Receiving Waters .....	5
Part H: Summary of Stormwater Management Program (SWMP) under the 2006 Small MS4 General Permit .....	6
Part I: 2016 Stormwater Management Program (SWMP) Summary .....	8
Part J: Application Certification and Signature .....	11
Appendix .....	12



United States Environmental Protection Agency  
National Pollutant Discharge Elimination System  
Notice of Intent (NOI) for coverage under the Small Municipal Separate  
Storm Sewer System (MS4) General Permit (PRR040003) for Puerto Rico

**Part A: General Information**

1. Name of Municipality or Organization: Autonomous Municipal Government of Trujillo Alto
2. Type: ☐ Federal ☐ State ☒ Municipality ☐ Other:
3. Existing Permittee: ☒ Yes ☐ No If Yes, Provide EPA NPDES Permit Number: PRR-040003
4. Location Address:
  - a. Street: 46 Luis Muñoz Rivera St.
  - b. City: Trujillo Alto State: PR Zip Code: 00977
5. Mailing Address:
  - a. Street: PO BOX 1869
  - b. City: Trujillo Alto State: PR Zip Code: 00977
6. Telephone Number: 787-761-2559 Fax: 787-748-0160
7. E-mail: opot@trujilloalto.gov.pr
8. Latitude: 18° 21' 07.39" N Longitude: 66° 00' 23.54" W

**Part B: Primary MS4 Program Manager Contact Information**

1. Name: Plan. Deborah Andrade-Pizarro
2. Position Title: Land Use and Planning Office Director
3. Stormwater Management Program (SWMP) Location: Hardcopy available at Planning and Land Use Office (LUPO): 46 Luis Muñoz Rivera St., Trujillo Alto, PR 00977
4. Mailing Address:
  - a. Street: PO BOX 1869
  - b. City: Trujillo Alto State: PR Zip Code: 00977
5. Telephone Number: 787-761-2559
6. E-mail: dandrade@trujilloalto.gov.pr

**Part C: Eligibility Determination**

1. Endangered Species Act (ESA) determination complete? ☒ Yes ☐ No
  - a. Eligibility Criteria (check all that apply): ☒ A ☐ B ☐ C ☐ D ☐ E

In order to meet the criteria under the Small MS4 General Permit and the Endangered Species Act (ESA), and to promote the goals of those Acts, we are seeking to ensure the activities regulated by this General Permit do not adversely affect endangered and threatened species or critical habitat. According to Department of Natural and Environmental Resources official list of endangered and threatened species no species of flora, fauna or critical habitat will be adversely affected by direct stormwater discharges in the water bodies of the MS4 Urbanized Area. However, there are currently 28 combined species between plants and animals that can be found in the AMGTAs



United States Environmental Protection Agency  
National Pollutant Discharge Elimination System  
Notice of Intent (NOI) for coverage under the Small Municipal Separate  
Storm Sewer System (MS4) General Permit (PRR040003) for Puerto Rico

territory. Among the plant species present in the AMGTA are fruit and medicinal trees, ferns, hyacinths, among other type of plants.

Flora	
Common Name	Scientific Name
Avocado	<i>Persea americana</i>
Courbaril	<i>Hymenaea courbaril</i> L.
Bamboo	<i>Bambusa vulgaris</i>
Cassia	<i>Cassia siamea</i>
Bastard Stopper	<i>Petitia domingensis</i>
Clusia	<i>Copay clusia</i>
Rubial	<i>Zanthoxylum martinicense</i>
Royal Poinciana	<i>Delonix regia</i>
Boston Fern	<i>Nephrolepis exaltata</i>
Taro	<i>Colocasia esculenta</i>
Mango	<i>Mangifera indica</i> L.
Doncella	<i>Byrsonima spicata</i>
Cabbage-Bark Tree	<i>Andira inermis</i>
Sensitive Plant	<i>Mimosa pudica</i>
Fiddlewood	<i>Citharexylum fruticosum</i> L.
Queen's Crape-Myrtle	<i>Lagerstroemia speciosa</i>
African Tulip Tree	<i>Spathodea campanulata</i>

Wildlife that inhabits the AMGTA varies from fish, amphibians, reptiles, insects, birds and mammals. The next table lists the species sighted and wildy reproduced in our municipality:

Fauna	
Common Name	Scientific Name
White-Lipped Frog	<i>Leptodactylus albilabris</i>
Tilapia	<i>Tilapia rendalli</i>
Largemouth Bass	<i>Micropteurs salmoides</i>
Crested Anole	<i>Anolis cristatellus</i>
Spotted Anole	<i>Anolis stratulus</i>
Greater Antillean Grackle	<i>Quiscalus niger</i>
Gray Kingbird	<i>Tyrannus dominicensis</i>
Bananaquit	<i>Coereba flaveola</i>
Common Ground-Dove	<i>Columbina passerina</i>
Zenaida Dove	<i>Zenaida aurita</i>
Common Cat	<i>Felis domesticus</i>

2. National Historic Preservation Act (NHPA) determination complete? ☒ Yes ☐ No  
 a. Eligibility Criteria (check all that apply): ☒ A ☐ B ☐ C ☐ D ☐ E



## Part D: Map/Boundaries

### 1. MS4 / Organization Description of regulated boundaries (narrative):

Trujillo Alto is located in the northern part of Puerto Rico and is part of the San Juan Metropolitan Region (SJMR). This Region is composed by the municipalities of Bayamón, Canóvanas, Carolina, Cataño, Dorado, Guaynabo, Loíza, San Juan, Toa Alta, Toa Baja, Trujillo Alto, Vega Baja and Vega Alta. Trujillo Alto shares its geographic limits with the Municipality of San Juan to the North West, the Municipalities of Caguas and Gurabo in the South and the Municipality of Carolina to the East.

The municipal surface is comprised of 54 square kilometers (21 square miles) with an estimated population of over 71,000 people according to the 2014 Census. The estimate square mileage served by the MS4 is 7.20.

Trujillo Alto is divided into eight (8) "Barrios" or wards; Pueblo, Cuevas, Saint Just, Carraízo, Dos Bocas, La Gloria, Quebrada Negrito and Quebrada Grande. Trujillo Alto has 29,813 housing units and the population density is 3,420.9 per square miles according to the 2014 Census.

The State government provides the potable water infrastructure and sanitary sewer water collection in the Urban Area. The potable water distribution is mainly composed of 1 water filtration plant (Sergio Cuevas, located in Cuevas ward) and wells, divided among domestic, agricultural and industrial.

The Local Government provides essential services to all Trujillo Alto's residents. These services include infrastructure maintenance, solid nontoxic waste collection and disposal, support, industrial development with its two (2) Industrial Parks and Stone Quarries which help produce building materials, among other services. The most important economic sectors in Trujillo Alto are the Services, Construction and Industrial activities.

The urban structure of the AMGTA is divided essentially in three (3) areas of great contrast by itself; the first, constituted by the Northern wards (Cuevas, Saint Just and Pueblo) has the greater concentration of single-family houses and apartments, main commercial centers, industrial parks and government facilities. The second is composed by the Southern wards (Quebrada Grande, Quebrada Negrito, La Gloria and Dos Bocas). This area has the lowest population density and the highest urban sprawl index throughout the AMGTA; the infrastructure presents deficiencies and the



topography is steeper and sometimes dangerous. The third one is formed by the second most populated ward, Carraízo, which has the geographical particularity of being naturally dissociated by the Río Grande de Loíza river.

2. Location Map/Boundaries. A location map must be attached showing the pertinent city, town, wards, or boundaries, the boundaries of the Small MS4, including surface water body(s), and the "urbanized area" (UA) when applicable.

Is map attached?      ☒ Yes   ☐ No

#### Part E: MS4 Infrastructure (if covered under the 2006 general permit)

1. Estimated Percent of Outfall Map Complete: 15% complete
  - a. If 100% percent requirements are not met, enter an estimated date of completion:  
12/21/2018
  - b. Web address where MS4 map is published: Hard copy will be available at Land Use and Planning Office (LUPO). Map is attached to Appendix.

#### Part F: Bylaw/Ordinance Development (if covered under the 2006 general permit)

1. Illicit Discharge Detection and Elimination (IDDE) authority adopted? ☒ Yes   ☐ No
  - a. Effective Date or Estimated Date of Adoption: 06/21/2009
2. Construction/Erosion and Sediment Control authority adopted?      ☒ Yes   ☐ No
  - b. Effective Date or Estimated Date of Adoption: 06/21/2009
3. Post-Construction Stormwater Management adopted?      ☐ Yes   ☒ No
  - c. Effective Date or Estimated Date of Adoption: 07/01/2017



United States Environmental Protection Agency  
National Pollutant Discharge Elimination System  
Notice of Intent (NOI) for coverage under the Small Municipal Separate  
Storm Sewer System (MS4) General Permit (PRR040003) for Puerto Rico

## Part G: Receiving Waters

Waterbody Segment that receives flow from the MS4	Number of Outfalls into receiving waterbody segment	Have any monitoring been performed to outfalls?	List of Pollutant(s) causing impairment (if applicable)	List of TMDL Pollutant(s) (if any)
Río Grande de Loíza River	8 <sup>1</sup>	Yes	<ul style="list-style-type: none"> <li>- <b>Metals:</b> Arsenic and Copper</li> <li>- <b>Toxic Inorganics:</b> Cyanide</li> <li>- <b>Organic Enrichment/Oxygen Depletion:</b> Dissolved Oxygen</li> <li>- <b>Pathogens:</b> Fecal Coliform</li> <li>- <b>Turbidity</b></li> <li>- <b>Other Cause:</b> Surfactants</li> </ul>	TMDL for Río Grande de Loíza (2007) of pollutant Fecal Coliforms Completed. Other pollutants: TMDL needed.
Blasina Creek	To be determined	No	<ul style="list-style-type: none"> <li>- <b>Ammonia</b></li> <li>- <b>Metals:</b> Arsenic</li> <li>- <b>Pathogens:</b> Fecal Coliform</li> <li>- <b>Mercury</b></li> <li>- <b>Nutrients:</b> Phosphorus</li> <li>- <b>Other Cause:</b> Surfactants</li> </ul>	TMDL Needed
Cepero Creek	To be determined	No	No impairments identified	N/A
Grande Creek	To be determined	No	<ul style="list-style-type: none"> <li>- <b>Metals:</b> Arsenic</li> <li>- <b>Toxic Inorganics:</b> Cyanide</li> <li>- <b>Other Cause:</b> Surfactants</li> </ul>	TMDL Needed
Matienzo Creek	To be determined	No	No impairments identified by EPA.	N/A
Rohena Creek <sup>2</sup>	1 <sup>1</sup>	Yes	<ul style="list-style-type: none"> <li>- <b>Pathogens:</b> Fecal Coliform</li> <li>- <b>Metals:</b> Arsenic</li> <li>- <b>Toxic Inorganics:</b> Cyanide</li> </ul>	TMDL Needed
Sabana Llana Creek	To be determined	No	No impairments identified	N/A
Variante Creek	2 <sup>1</sup>	Yes	No impairments identified	N/A
Colorada Creek <sup>2</sup>	To be determined	No	<ul style="list-style-type: none"> <li>- <b>Pathogens:</b> Fecal Coliform</li> <li>- <b>Metals:</b> Arsenic</li> <li>- <b>Toxic Inorganics:</b> Cyanide</li> </ul>	TMDL Needed

<sup>1</sup> Outfalls Identified by LUPO and EPA personnel on February, 2014.

<sup>2</sup> Identified on EPA "My Waters Mapper" as the Quebrada Maracuto





United States Environmental Protection Agency  
National Pollutant Discharge Elimination System  
Notice of Intent (NOI) for coverage under the Small Municipal Separate  
Storm Sewer System (MS4) General Permit (PRR040003) for Puerto Rico

## Part H: Summary of Stormwater Management Program (SWMP) under the 2006 Small MS4 General Permit

BMP Description	Goal Achieved?	Continued in next permit cycle?	Who was the targeted audience? Explain reason for not achieving goal.	Modification(s) to goals or BMP for next permit cycle
<b>Measure 1: Public Education and Outreach</b>				
Municipal outreach programs	Yes	Yes	<ul style="list-style-type: none"> <li>- Community boards, schools, municipal offices.</li> <li>- Training Environmental Control Office, Public Works Office and Land Use and Planning Office personnel to instruct general public.</li> </ul>	Provide Conferences to schools located at Consolidated Urban Area once a year. Give Training to Municipal Employees once a year.
Educational information: Brochures and Stormwater Manhole Labeling	Yes	Yes	<ul style="list-style-type: none"> <li>- Households and Homeowners</li> <li>- General public</li> </ul>	Give one (1) conference a year to Recreational Associations and distribute brochures to homeowners.
Stormwater outreach materials	Yes	Yes	Commercial offices and establishments	Hand out informative posters with emphasis on fast foods, restaurants, auto repair workshops, carwash and other commercial establishments.
<b>Measure 2: Public Participation / Involvement</b>				
Reforestation programs	Yes	Yes	<ul style="list-style-type: none"> <li>- Communities and environmental groups</li> <li>- In Alliance with DRNA</li> </ul>	Create alliances with Private Sector and NGOs to give out trees to communities. Once every year for Earth Day (April 22 <sup>nd</sup> ).
Stream cleanup	Yes	Yes	In coordination with Environment Control Office to establish routes and schedule to implement program.	Emphasis on the Water Bodies located inside the Consolidated Urban Area delimitation.
Adopt a stream program	No	No	<ul style="list-style-type: none"> <li>- Communities near water bodies</li> <li>- Boy scouts and environmental groups</li> <li>- Promote through community boards to adopt section of streams that go by communities.</li> <li>- General public.</li> </ul> <p><i>Adopt a Stream Program was not completed due to insufficient resources. Also, community involvement was not as expected, which led to search for other types of initiatives.</i></p>	Will not be continued as designed. New strategies of Voluntary Water Quality Monitoring and Student Stormwater Awareness Art Program will replace this objective.
Watershed organizations	Yes	Yes	Center for Watershed Protection meetings.	Continue participating Watershed Protection meetings with NGOs and Environmental Agencies.



United States Environmental Protection Agency  
National Pollutant Discharge Elimination System  
Notice of Intent (NOI) for coverage under the Small Municipal Separate  
Storm Sewer System (MS4) General Permit (PRR040003) for Puerto Rico

BMP Description	Goal Achieved?	Continued in next permit cycle?	Who was the targeted audience? Explain reason for not achieving goal.	Modification(s) to goals or BMP for next permit cycle
<b>Measure 3: Illicit Discharge Detection and Elimination</b>				
Develop a stormwater sewer system map	No	Yes	Office of Land Use and Planning <i>Could not be fulfilled due to insufficient financial resources. 15% MS4 map completed.</i>	Estimated to be 100% complete by 2018.
Implement the ordinance prohibiting illicit discharges	Yes	Yes	- General public - Training of Municipal Police	Continue training municipal police once a year.
Develop a plan to detect and address these illicit discharges	No	Yes	In Coordination with the Environmental Control Office to develop routes and with the Municipal Police for enforcement	Develop a Standard Operation Procedure (SOP) regarding illicit discharges.
<b>Measure 4: Construction Site Runoff Control</b>				
Procedures for reviewing construction site plans	No	No	Community Development Office and LUPO personnel <i>The personnel were trained regarding requirements of construction sites. However, LUPO employee could not be certified as a Stormwater Inspector due to insufficient financial resources.</i>	A Pre-Construction Stormwater Runoff Control Compliance Checklist will be prepared by LUPO for use by Municipal Permit Office to reassure full compliance with established standards for private and public construction projects.
Procedures for inspections and enforcement of stormwater requirements at construction sites	No	Yes	Construction Project Developers <i>The Office of Planning and Land Use was not able to certify the Inspector who would perform task.</i>	Municipal Permit Office will be in charge of proper fulfillment of permits of new residential, commercial and industrial projects. Will establish an orientation module for construction projects with 1 acre or more of land area.
<b>Measure 5: Post-Construction Runoff Control</b>				
Site Inspection	Yes	Yes	Municipal Public Works Department	Municipal Permit Office will be in charge of this task.
<b>Measure 6: Pollution Prevention / Good Housekeeping</b>				
Municipal employee training and education	Yes	Yes	- Training for Field Maintenance Staff. - Workshops and conferences for Municipal Employees.	Will be continued once (1) a year to the Public Works Employees
Enforce Maintenance of Stormwater lines	No	Yes	- LUPO in charge of developing guidelines - Public Works Office in charge of enforcement	Land Use and Planning Office will develop the guidelines for proper enforcement.
Prevention Plan for Management and Storage of paints, oils, batteries, and others.	Yes	Yes	- Land Use and Planning Office in charge of SOP In coordination with Municipal Public Works Office for enforcement	The Land Use and Planning Office will develop the Standard Operation Procedure (SOP) regarding the prevention plan.



United States Environmental Protection Agency  
National Pollutant Discharge Elimination System  
Notice of Intent (NOI) for coverage under the Small Municipal Separate  
Storm Sewer System (MS4) General Permit (PRR040003) for Puerto Rico

## Part I. 2016 Stormwater Management Program (SWMP) Summary

BMP Description	Education Topic	Outreach Method	Measurable Goal
Measure 1: Public Education and Outreach			
Municipal outreach programs	Impacts of stormwater discharges on local waterbodies and the steps that can be taken to reduce stormwater pollution	<ul style="list-style-type: none"><li>- Provide Audiovisual Material for Conferences to schools located at Consolidated Urban Area</li><li>- Provide training to Municipal Employees</li></ul> <b>Frequency:</b> Once a year	<ul style="list-style-type: none"><li>- Percent of schools visited each year</li><li>- Amount of participants in Municipal Employee Training</li></ul>
Household awareness program	Proper use of stormwater sewer systems. Impacts of illicit discharges and penalties for illicit discharges.	<ul style="list-style-type: none"><li>- Provide Conference to Recreational Associations</li></ul> <b>Frequency:</b> Once a year <ul style="list-style-type: none"><li>- Distribution of Brochures to Homeowners</li></ul> <b>Frequency:</b> Once every two years	<ul style="list-style-type: none"><li>- Attendance to Conference</li><li>- Percent of Homes impacted/visited</li></ul>
Stormwater outreach materials	Proper disposal of waste and pollutants. Impacts of illicit discharges and penalties for illicit discharges.	<ul style="list-style-type: none"><li>- Hand out informative posters with emphasis on fast foods, restaurants, auto repair workshops, carwash and other commercial establishments</li></ul>	<ul style="list-style-type: none"><li>- Percent of posters distributed to selected establishments</li></ul>

BMP Description	Program Description	Measurable Goal
Measure 2: Public Involvement and Participation		
Reforestation programs	Environmental and stormwater awareness and educational activity involving the general public. In alliance with private sector and NGOs, the MATA will establish activity to give Trujillo Alto communities native trees. <b>Frequency:</b> Once a year on International Earth Day (April 22 <sup>nd</sup> )	<ul style="list-style-type: none"><li>- Amount of trees distributed</li></ul>
Stream cleanup	Restoration and Cleaning of water bodies. In coordination with Environment Control Office, establish routes and schedule to implement program with community voluntary work. <b>Frequency:</b> To be determined	<ul style="list-style-type: none"><li>- Number of streams cleaned</li><li>- Number of volunteers</li></ul>
Voluntary Water Quality Monitoring	The Volunteers would participate in programmed water quality monitoring activities coordinated with NGOs or Environmental Agencies. Interactive educational activity that provides citizens with first-hand knowledge of the quality of the waterbodies. <b>Frequency:</b> To be determined	<ul style="list-style-type: none"><li>- Number of volunteers in each activity</li></ul>
Student Stormwater Awareness Art Program	Program to be planned as an Art Poster Competition where students of different age groups design the art piece to raise Awareness of Stormwater issues and appropriate management. <b>Frequency:</b> Once a year	<ul style="list-style-type: none"><li>- Number of Student Participants</li></ul>
Watershed Organizations	LUPO personnel with continue to participate in meetings regarding watershed protection with Environmental Agencies and NGOs.	<ul style="list-style-type: none"><li>- Number of meetings attended</li></ul>





United States Environmental Protection Agency  
National Pollutant Discharge Elimination System  
Notice of Intent (NOI) for coverage under the Small Municipal Separate  
Storm Sewer System (MS4) General Permit (PRR040003) for Puerto Rico

BMP Description	Program Description	Measurable Goal
<b>Measure 3: Illicit Discharge Detection and Elimination</b>		
Develop a stormwater sewer system map	The Municipality of Trujillo Alto will develop the Stormwater Sewer System Map.	- Estimated percent of completion each year until 100% complete.
Implement the ordinance prohibiting illicit discharges	Training of Municipal Police in order to effectively implement the established ordinances regarding illicit discharges. <b>Frequency:</b> Once every two years	- Participation in Training - Number of tickets issued
Develop a plan to detect and address these illicit discharges	Develop a Standard Operation Procedure (SOP) regarding the plan to detect and address the illicit discharges.	- SOP completed
BMP Description	Program Description	Measurable Goal
<b>Measure 4: Construction Site Stormwater Runoff Control</b>		
Construction Site Plan Review	A Pre-Construction Stormwater Runoff Control Compliance Checklist will be prepared by LUPO for use by the Municipal Permit Office to reassure full compliance with established standards for private and public construction projects.	- Amount of projects reviewed in pre-construction phase
Procedures for inspections and enforcement of stormwater requirements at construction sites	Examination of current SOP in the Municipal Permit Office for inspections and enforcement at construction sites. Updating and methodizing the SOP for proper fulfillment of permits of new residential, commercial and industrial projects. LUPO will also establish an orientation module for construction projects with 1 acre or more of land area.	- Percent of construction projects over 1 acre inspected
Procedures for Receipt and consideration of information submitted by the public	Examination, review, updating and methodizing of current SOP regarding citizen complaints of construction site stormwater runoff inappropriate practices.	- 100% of SOP revision and updating completed
BMP Description	Program Description	Measurable Goal
<b>Measure 5: Post-Construction Stormwater Management in New Development and Redevelopment</b>		
Site Inspection	Municipal Office of Permits will be in charge of inspecting finished projects, both private and public to verify proper construction and full compliance with all requirements established.	- Rate of inspected projects / finished projects
Manual of Stormwater Management Best Practices	Informative manual on structural best management practices like: Infiltration, Retention and Vegetative BMPs.	- Number of Construction Projects that adopt BMPs



United States Environmental Protection Agency  
National Pollutant Discharge Elimination System  
Notice of Intent (NOI) for coverage under the Small Municipal Separate  
Storm Sewer System (MS4) General Permit (PRR040003) for Puerto Rico

BMP Description	Program Description	Measurable Goal
<b>Measure 6: Good Housekeeping and Pollution Prevention in Municipal Operations</b>		
Municipal employee training and education	Public Works Maintenance Staff will receive training on the Standard Operation Procedure regarding maintenance tasks of stormwater sewer systems and of proper disposal of pollutants removed from the MS4. <b>Frequency:</b> Once a year	- Number of Public Works Employees in attendance of training
Enforce Maintenance of Stormwater lines	Land Use and Planning Office will prepare the SOP on how the Public Works Office should enforce the maintenance of the Stormwater Lines.	- 100% SOP finished.
Prevention Plan for Management and Storage of paints, oils, batteries, and others.	The Land Use and Planning Office, in coordination with the Public Works Office will develop the Guidelines on the proper storage of mentioned materials. The Public Works Office will be in charge of the proper enforcement of the Guidelines.	- 100% Guidelines finished. - Little or no number of complaints regarding improper storage.



## Part J. Application Certification and Signature

"I certify under penalty of law that this document and all attachments were prepared under my direction or supervision in accordance with a system designed to assure that qualified personnel properly gathered and evaluated the information submitted. Based on my inquiry of the person or persons who manage the system, or those persons directly responsible for gathering the information, the information submitted is, to the best of my knowledge and belief, true, accurate, and complete. I am aware that there are significant penalties for submitting false information, including the possibility of fine and imprisonment for knowing violations."

Signature of Mayor/Elected Official: \_\_\_\_\_



Print Name of Mayor/Elected Official: \_\_\_\_\_ José Luis Cruz Cruz \_\_\_\_\_

Title: Mayor

Date: September 29, 2016

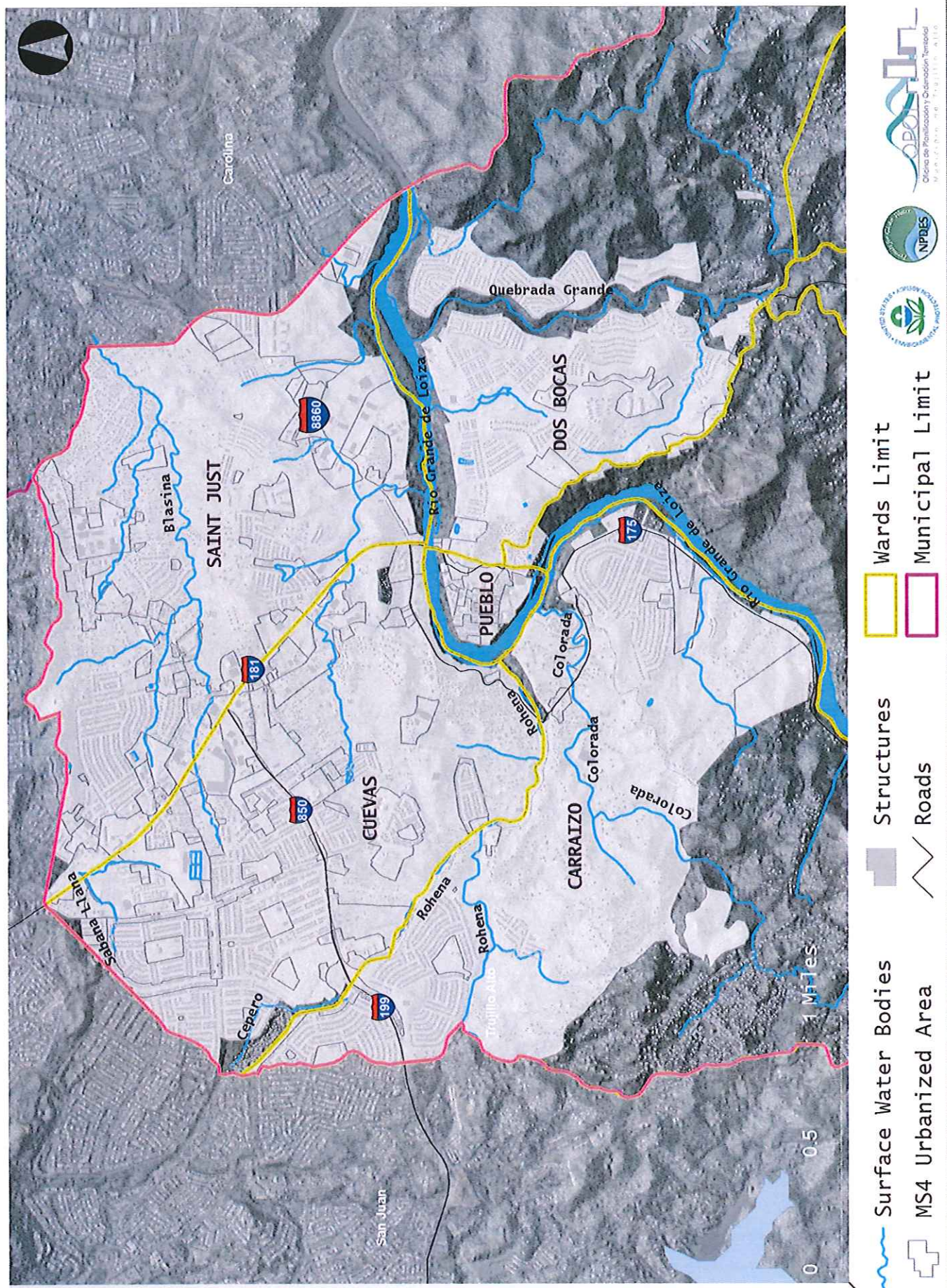


United States Environmental Protection Agency  
National Pollutant Discharge Elimination System  
Notice of Intent (NOI) for coverage under the Small Municipal Separate  
Storm Sewer System (MS4) General Permit (PRR040003) for Puerto Rico

**APPENDIX**

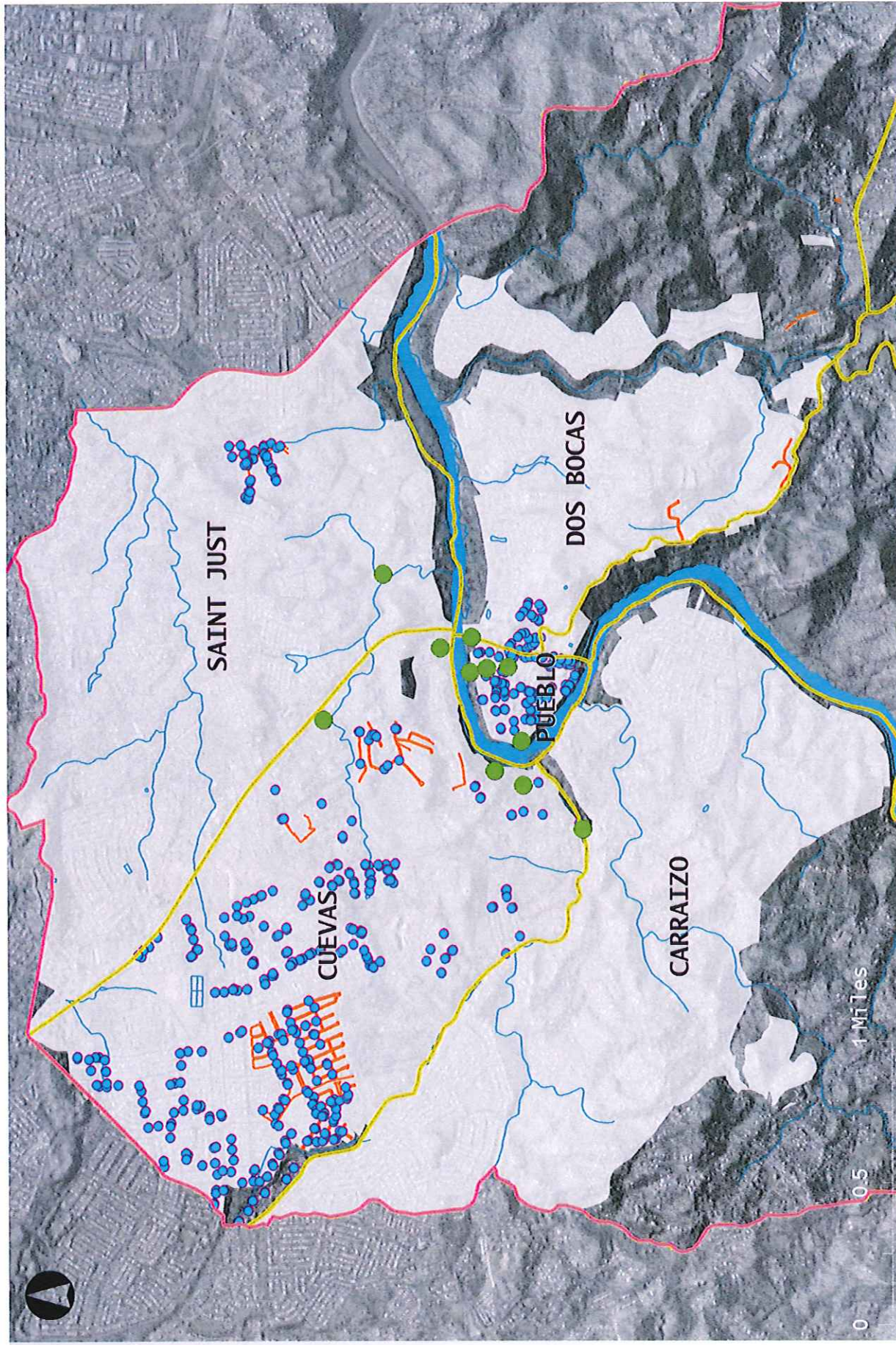


and MS4 Urbanized Area





# MS4 Infrastructure



- Discharge Points/Outfalls
- Storm Drains
- Stormwater Sewers
- MS4 Urbanized Area
- Municipal Limit