



Estado Libre Asociado de Puerto Rico
Municipio Autónomo de San Germán

Oficina del Alcalde



March 16, 2017

Eng. Sergio Bosques
Regional Storm Water Coordinator
Caribbean Environmental Protection Division
City View Plaza II – Suite 7000
#48 Rd. 165 km 1.2
Guaynabo, PR 00968-8069

2017 MAR 20 PM 2:45
US EPA
OEPRD
RECEIVED

NOTICE OF INTENT-NOI- **MUNICIPALITY OF SAN GERMAN**,
FOR STORM WATER DISCHARGES FROM SMALL MS4s IN URBANIZED AREAS

As part of the provisions of the Clean Water Act, Section 402 (p), requires that storm water discharges, associated with municipal separate storm sewer system (MS4s) in urbanized areas, to waters of the US must be authorized by a National Pollutant Discharge Elimination System (NPDES) permit. In order to comply with this requirement, we are submitting our Notice of Intent for the NPDES Permit no. PRR040035. The updated SWMP document will be modified in the next 6 months as required in Section 1.11 of the 2016 signed permit, and pursuant to Title 40, Part 122.34 Subpart B, or Permit Application and Special NPDES Program Requirements. The Municipality of Dorado has the intention of comply with the Permit's provisions and EPA requirements. In you need additional information, do not hesitate to contact us at the Mayor's Office at 787-892-3500 Ext. 2222, 2200 or via e-mail at llopez@municipiodesangerman.com.

Sincerely,


Hon. Isidro Negrón Frizary
Mayor

Enclosure

Notice of Intent

GOBIERNO MUNICIPAL DE SAN GERMAN

NOTICE OF INTENT
NATIONAL POLLUTANT DISCHARGE ELIMINATION SYSTEM (NPDES) PHASE II,
REGULATED SMALL MUNICIPAL SEPARATE STORM SEWER SYSTEMS (MS4's)

INDIVIDUAL PERMIT

MUNICIPALITY OF SAN GERMAN

EPA REGION 2 PUERTO RICO

PREPARED BY
ECOSTAHLIA CONSULTORES AMBIENTALES
SAN JUAN, PUERTO RICO

United States Environmental Protection Agency
National Pollutant Discharge Elimination System
Notice of Intent (NOI) for coverage under the Small Municipal Separate
Storm Sewer System (MS4) General Permit (PRR040000) for Puerto Rico

Part A. General Information

1. Name of Municipality or Organization: Municipality of San Germán
2. Type: ☐ Federal ☐ State ☒ Municipality ☐ Other: _____
3. Existing Permittee: ☒ Yes ☐ No If yes, provide EPA NPDES Permit Number: P R R 0 4 0 0 3 5
4. Location Address:
 - a. Street: Interamerican University #136
 - b. City: San Germán State: PR Zip Code: 00683
5. Mailing Address:
 - a. Street: P.O. Box 85
 - b. City: San Germán State: PR Zip Code: 00683-0085
6. Telephone Number: 787-892-3500 Ext. 2222, 2200 Fax: _____
7. E-mail: llopez@municipiodesangerman.com
8. Standard Industrial Classification (SIC) Code (see instructions for common codes): 9199
9. Latitude: (use the format provided.) _____ Longitude: (use the format provided.) _____
2.2.4.2 Approximate center of the regulated portion of the MS4.

18 04' 51.80" ° N (degrees
decimal)

67 02' 17.82" ° W (degrees decimal)

Part B. Primary MS4 Program Manager Contact Information

1. Name: Luis López Serrano, PL
2. Position Title: Director of Land Use Planning
3. Stormwater Management Program (SWMP) Location (web address or physical location):
Office of Land Use Planning #11 Calle Ruiz Belvis, San Germán
4. Mailing Address:
 - a. Street: P.O. Box 85
 - b. City: San Germán State: PR Zip Code: 00683-0085

EPA Region 2 Small MS4 General Permit

5. Telephone Number: 787-892-3500 Ext. 2222, 2200

6. E-mail: llopez@municipiodesangerman.com

Part C. Eligibility Determination

1. Endangered Species Act (ESA) determination complete? ☒ Yes ☐ No
- a. Eligibility Criteria (check all that apply): ☐ A ☐ B ☐ C ☐ D ☒ E ☐ F
2. National Historic Preservation Act (NHPA) determination complete? ☒ Yes ☐ No
- a. Eligibility Criteria (check all that apply): ☐ A ☒ B ☐ C ☐ D

Part D. Map/Boundaries

1. MS4/Organization Description of regulated boundaries (narrative):

The Municipality of San Germán is located in the southwestern part of the island. It has a territorial extension of 141.18 square kilometers. San Germán is bounded to the north with Mayaguez and Maricao; in the south with Lajas; west Cabo Rojo and Hormigueros; and to the east with the Sabana Grande Municipality. San Germán possesses a population of 35,527 inhabitants, according to the 2010 Census. San Germán is divided into eighteen (18) wards: Ancones, Caín Alto, Caín Bajo, Cotuí, Duey Alto, Duey Bajo, Guamá, Hoconuco Alto, Hoconuco Bajo, Maresúa, Minillas, Retiro, Rosario Alto, Rosario Bajo, Rosario Peñón, Sabana Encas, Sabana Grande Abajo, San Germán Pueblo, and Tuna.

The Municipality of San German operates a municipal separate storm sewer system located in the Trujillo Area, Sabana Grande Abajo ward and divided in several subsystems. This sewer system is a natural gully that starts close to the state road PR-166 and continues south through the Valle Verde development, the PR-102 state road contiguous to the Interamerican University and the PR-114 state road, flowing into the Guanajibo River. The other municipal separate storm sewer system is located at the Pueblo Nuevo Area. The systems start as a natural gully at Villa Interamericana residential community crossing the PR-102 state road, the Oriente Street as a trapezoidal canalized section, adjacent to the Lola Rodríguez de Tió High School and Hernán Alvarez street flowing into the Estero River area close to the PR-360 state road. An additional municipal separate storm sewer system starts at the Retiro Community and continues its course through the PR-102 state road, Santa Marta, Riverside and Porta Coeli residential communities as a rectangular canalized section flowing into the Estero River area close to the PR-122 state road.

2. Location Map/Boundaries. A location map must be attached showing the pertinent city, town, wards, or boundaries, the boundaries of the Small MS4, including surface water body(s), and the "urbanized area" (UA) when applicable.

Is map attached? ☒ Yes ☐ No

Part E. MS4 Infrastructure (if covered under the 2006 general permit)

1. Estimated Percent of Outfall Map Complete? (Section 4.2.3 of 2006 general permit): 20 %
Inventory work has been an ongoing process since 2014 using a web base interface tool www.ms4web.com.

- a. If 100% of 2006 requirements are not met, enter an estimated date of completion: 12/31/2017
(MM/DD/YYYY)
- At the time of this document, the municipality is working to identify sources of funding for the new budget starting July 1, 2017.
- b. Web address where MS4 map is published: (Included)
If outfall map is unavailable on the internet an electronic or paper copy of the outfall map must be included with NOI submission.

EPA Region 2 Small MS4 General Permit

Part F. Bylaw/Ordinance Development (if covered under the 2006 general permit)

1. Illicit Discharge Detection and Elimination (IDDE) authority adopted? ☒ Yes ☐ No

a. Effective Date or Estimated Date of Adoption: 2011
(MM/DD/YYYY)

2. Construction/Erosion and Sediment Control authority adopted? ☐ Yes ☒ No

a. Effective Date or Estimated Date of Adoption: 12/30/2017
(MM/DD/YYYY)

3. Post-Construction Stormwater Management adopted? ☐ Yes ☒ No

a. Effective Date or Estimated Date of Adoption: 12/30/2017
(MM/DD/YYYY)

Part G. Receiving Waters

List the names of all surface waterbody segments to which your MS4 discharges. For each waterbody segment, please report the number of outfalls discharging into it and, if applicable, any impairments. You may attach additional information.

Waterbody Segment that receives flow from the MS4	Number of Outfalls into receiving waterbody segment	Have any monitoring been performed to outfalls? (Yes/No)	List of Pollutant(s) causing impairment (if applicable)	List of TMDL Pollutant (s) (if any)
RIO VIEJO WR77D	N/A	No	Collection System Failure, Onsite Wastewater Systems, Urban Runoff/Storm Sewers	Low Dissolved Oxygen
RIO ROSARIO PRWR77C	N/A	No	Fecal Coliforms Turbidity Pesticides	Fecal Coliforms Turbidity Pesticides
RIO GUANAJIBO PRWR77A	N/A	No	Fecal Coliforms Low Dissolved Oxygen Turbidity	Fecal Coliforms Low Dissolved Oxygen Turbidity

The Municipality of San Germán will work with a local contractor to identify the outfalls discharging into the above referenced waterbodies.

EPA Region 2 Small MS4 General Permit

Part H. Summary of Stormwater Management Program (SWMP) under the 2006 Small MS4 General Permit

For every measurable goal and associated Best Management Practice (BMP) listed in the adopted program, provide the following information (You may include additional pages):

BMP Description or BMP ID (e.g. MCM-1)	Goal Achieved? (Yes/No)	Continued in next permit cycle? (Yes/No)	Who was the targeted audience? Explain reason for not achieving goal.	Modification(s) to goals or BMP for next permit cycle
MCM-1 Public Education & Outreach				
In partnership with the U.S. Environmental Protection Agency (EPA) and State Agencies, the municipality will develop stormwater pamphlets, booklets, and flyers intended to solicit interest in a specific stormwater event or activity and to promote stormwater education, to make the public sufficiently aware and concerned about the significance of their behavior for stormwater pollution. Through information and education, the municipality expects to change improper behaviors.	Yes	Yes	Pamphlet racks will be set up at libraries, schools and municipal offices.	None. The Municipality will identify the necessary funds.
The municipality will request the cooperation of the regional newspaper "La Estrella" to publish an article at least once a year.	Yes	Yes	General Public	None. The Municipality will continue this task.
Pet Waste Collection Program.	Yes	Yes	Public Works Staffers	Ongoing process. There will be no changes to the task.
Proper Disposal of Household Hazardous Wastes (Education for Homeowners)	No	Yes	General Public	Ongoing Process.

EPA Region 2 Small MS4 General Permit

Radio Campaign-The municipality will produce a 30-second public service announcement (PSA). The PSA's will highlight the impacts of stormwater in the community.	Yes	Yes	General Public	Ongoing Process. The Municipality will continue with this task.
MCM-2 Public Involvement & Participation				
Stormwater Outreach Program for a general age-range target. This includes the development of informational materials and brochures for distribution to the schools.	Yes	Yes	School Students	The Municipality with the support from their contractor will continue this task.
Web Page Development	No	Yes	General Public, Business owners, students	The Municipality will complete this task in 2017

Part H. Summary of Stormwater Management Program (SWMP) under the 2006 Small MS4 General Permit

For every measurable goal and associated Best Management Practice (BMP) listed in the adopted program, provide the following information (You may include additional pages):

BMP Description or BMP ID (e.g. MCM-1)	Goal Achieved? (Yes/No)	Continued in next permit cycle? (Yes/No)	Who was the targeted audience? Explain reason for not achieving goal.	Modification(s) to goals or BMP for next permit cycle
MCM-3 Illicit Discharge Detection and Elimination Program				
Develop, implement and enforce a program to detect and eliminate illicit discharges (as defined in 40 CFR § 122.26(b)) in our small MS4.	No	Yes	All communities. The monitoring spots were identified.	The next step is to start the monitoring of wastewater.
Develop a storm sewer system map, showing the locations of all outfalls and the names and locations of all waters of the United States that receive discharges from those outfalls.	No	Yes	Municipal Staffers The lack of funding and human Resources.	The Municipality is working to identify the funds to complete this task.

EPA Region 2 Small MS4 General Permit

Educate Commercial and Industrial Property Owners.	Yes	Yes	Commercial and Industrial Businesses owners.	This task will continue in the next cycle.
Program to Detect Failing Septic Systems.	No	Yes	The lack of funding forced the Municipality to depend on the state regulations to oversee this task.	The Municipality is working to identify the funds to complete this task.

Part H. Summary of Stormwater Management Program (SWMP) under the 2006 Small MS4 General Permit

For every measurable goal and associated Best Management Practice (BMP) listed in the adopted program, provide the following information (You may include additional pages):

BMP Description or BMP ID (e.g. MCM-1)	Goal Achieved? (Yes/No)	Continued in next permit cycle? (Yes/No)	Who was the targeted audience? Explain reason for not achieving goal.	Modification(s) to goals or BMP for next permit cycle
MCM-4 Construction Site Storm Water Runoff Control				
Inspection and Enforcement of Storm Water Requirements at Construction Sites.	Yes	Yes	All construction sites around the permit covered area of San Germán.	The Municipal government will continue working on this task in the new cycle.
Preserving Natural Vegetation.	Yes	Yes	All construction sites around the permit covered area of San Germán.	The Municipal government will continue working on this task in the new cycle.
MCM-5 Post Construction and Re-Development Storm Water Program				
Inspection of completed construction sites to assure the project is in compliance with state law and with any regulatory agency requirements.	Yes	Yes	All construction sites around the permit covered area of San Germán.	The Municipal government will continue working on this task in the new cycle.
Constant cleaning of the storm sewer system.	Yes	Yes	Ongoing Process.	This task will continue in the next cycle.
MCM-6 Pollution Prevention and Good Housekeeping				
To inform and capacitate the Public Works personnel on the NPDES program.	Yes	Yes	Municipal Employees at Public Works.	This task will continue in the next cycle.
Vehicle Maintenance.	Yes	Yes	Public Works and all vehicles under the Municipal Fleet.	Ongoing Process. The Municipality will continue with this task in the next permit cycle.

EPA Region 2 Small MS4 General Permit

Parking Lot and Street Cleaning.	Yes	Yes	All urban streets, storm drain inlets, outfalls and parking lots	Ongoing process. There will be no changes to the task.
Oil Recycling Program	Yes	Yes	General Public, Municipal Employees.	Ongoing process. There will be no changes to the task.
Develop spill prevention and control plans for municipal facilities.	Yes	Yes	Municipal Employees and Operational Areas	Completed. Copies will be provided with the SWMP 2017

EPA Region 2 Small MS4 General Permit

Part I. 2016 Stormwater Management Program (SWMP) Summary

Public Education and Outreach (See Section 2.4.2 for detailed information of required BMPs):

BMP Description or BMP ID (e.g. MCM-1)	Education Topic (Identify the issue your BMP is educating the public about.)	Outreach Method (Describe the method used to convey this topic, e.g. mailing, events, school, etc.)	Measurable Goal (What is the end result of this program? What indicator will determine the goal has been met? (e.g., number mailing sent, people at event, class participation, etc.)
BMP-1 Storm Drain Stenciling Program	Non-Point Sources and Illegal Discharges.	Storm Drains Stenciling.	Number of storm water inlets painted and volunteers participating. The target is to have a minimum of 30 drains marked on yearly basis.
BMP-2 Annual Cleanup	Non-Point Sources.	Volunteer and residents' participation.	Number of tons of debris and recyclables collected during the cleanup events. The target is to collect 1 ton per year but to reduce the amount based in the success of the program.
BMP-3 Public Education Program	Illegal Discharges, Non-Point Sources and Erosion Control.	Public Meetings, School Lectures.	Number of residents attending the events. To target 200 students every year city-wide.
BMP-4 Community Hotline	Illegal Discharges and Non-Point Sources	Thru the general outreach activities, the Municipality encourages the use of the hotline to address the problems.	Number of calls and referrals to correct illegal discharges and non-point sources of pollution.
BMP-5 Social Media Education Campaign	Illegal Discharges, Non-Point Sources and Erosion Control.	Posting of educational clips and messages in Facebook, Twitter, Instagram and Snapchat.	Number of messages distributed, shared and viewed on a weekly basis.

EPA Region 2 Small MS4 General Permit

Part I. 2016 Stormwater Management Program (SWMP) Summary (continued)

Public Involvement and Participation (See Section 2.4.3 for detailed information of required BMPs):

BMP Description or BMP ID (e.g. MCM-1)	Program Description (Describe the program and how it will inspire public participation, e.g. special events, volunteer sampling and monitoring efforts, household hazardous waste recycling, etc.)	Measurable Goal (What is the end result of this program? What indicator will determine the goal has been met? (e.g., participation, amount of sampling performed, waste collected, etc.)
BMP-1 Storm Sewer System Map	Then Municipality is required to develop an inventory of all municipal stormwater infrastructure.	Create a map inventory of all the stormwater infrastructure in the urban area of the Municipality. The work is currently under planning at it is expected to be completed by 12/31/2017.
BMP-2 Implement Regulations to Enforce Non-Storm Discharges	The Municipality will start train its employees and implement the approved ordinance throughout its territory.	It is expected to start in the first semester of 2017. Reduction in illicit discharges and connections.
BMP-3 Meet with Local Community Groups and Organizations to Involve them in Stormwater Efforts	The Municipality propose the use of public meetings through the community as a mean to request their involvement in the efforts coordinated by the administration.	The number of volunteers and the total number of communities covered during the public meetings.
BMP-3 Develop and conduct periodical focus groups to discuss the current issues related to pollution from storm-waters	The Municipality propose the use of focus groups through the community as a mean to request their involvement in the efforts coordinated by the administration.	The number of volunteers participating during the focus groups and the number of issues identified and fixed.
BMP-4 Conduct Public Hearings to address Stormwater issues	The Municipality propose conducting a yearly Public Hearing to address the most pressing issues related to pollution from Stormwater runoff.	The number of participants and issues identified and resolved as a result from the Public Hearing.

EPA Region 2 Small MS4 General Permit

Part I. 2016 Stormwater Management Program (SWMP) Summary (continued)

Illicit Discharge Detection and Elimination (See Section 2.4.4 for detailed information of required BMPs):

BMP Description or BMP ID (e.g. MCM-1)	Program Description (Describe the program and how it will identify and remove illicit connections from the MS4, e.g. new regulations, investigation practices, removal of illicit connections, etc.)	Measurable Goal (What is the end result of this program? What indicator will determine the goal has been met? (e.g., adoption of bylaws/ordinances, amount of investigation performed, identified and removed illicit connections, etc.)
BMP-1 Prepare and implement an ordinance targeting illegal discharges at the storm sewer system	The Municipality propose to present a local ordinance and the necessary regulation targeting illegal discharges into the storm sewer system.	The number of discharges identified and corrected on a yearly basis.
BMP-2 Adopt a Stream Program	The Municipality propose the development of an adoption program with local partners aimed to target one of the water bodies located within the urban area of San Germán.	The number of streams or meters adopted and the improvement of the surface water quality of the streams.
BMP-3 MS4Web Permit Manager Tool	San Germán propose the use of a MS4-online Permit Manager as a mean to provide local residents and municipal managers with an internet based tool to access data on illegal discharges and all storm water outfalls in the city and how to address the issue of illegal discharges.	Number of residents and local managers using the Internet-based tool.
BMP-4 Used Oil Recycling Program	The Municipality of San Germán will implement a household oil recycling program as part of the city-wide effort to reduce the illegal discharge of used cooking oil in the storm sewer system and surface water bodies.	The number of gallons of used cooking oil recycled city-wide
BMP-5 Basic Surface Water Quality Monitoring Project	A basic surface water quality monitoring program will be established in a selected stream using parameters like pH, Temperature and Fecal Coliforms	Data from streams will be compared to data obtained on a regular basis by the PR Environmental Quality Board

EPA Region 2 Small MS4 General Permit

Part I. 2016 Stormwater Management Program (SWMP) Summary (continued)

Construction Site Stormwater Runoff Control (See Section 2.4.5 for detailed information of required BMPs):

BMP Description or BMP ID (e.g. MCM-1)	Program Description (Describe the program and how it will help control stormwater runoff at construction sites, e.g. new regulations, construction practices, inspection protocols, etc.)	Measurable Goal (What is the end result of this program? What indicator will determine the goal has been met? (e.g., adoption of bylaws/ordinances, amount of inspections performed and sites actively regulated, etc.)
BMP-1 Ordinance to control runoff from construction sites	The Municipality will prepare, approve and adopt an ordinance specifically targeting runoff from construction sites impacting the stormwater sewer system covered by the permit.	The number of interventions and sites corrected. 100% inspection rate city-wide.
BMP-2 Construction Sites Annual Inventory	Then Municipality is required to develop an inventory of all public and private construction projects. The local government propose the use of an online MS4 permit manager to create and maintain the inventory identifying all construction sites. The tool helps the local managers to update the information as needed. All documents associated with the projects will be added in PDF format during the inspections and will be ready available to the inspectors.	The number of projects identified and certified on compliance with the permit.
BMP-3 Development of SOPs for Construction Permits.	The Municipality propose the development of a Construction SOP aimed to provide developers with new means to address regulation requirement and for inspectors to identify deficiencies during inspections.	Number of Projects city-wide visited and brought into compliance with local ordinance and USEPA regulations.
BMP-4 BMPs during construction Poster	The Municipality will prepare and distribute a poster aimed to contractors and construction projects with BMPs specifically design to reduce impacts to the stormwater runoff from construction activities.	A 100% coverage of active and permitted construction projects city-wide.

EPA Region 2 Small MS4 General Permit

Part I. 2016 Stormwater Management Program (SWMP) Summary (continued)

Post-Construction Stormwater Management in New Development and Redevelopment (See Section 2.4.6 for detailed information of required BMPs):

BMP Description or BMP ID (e.g. MCM-1)	Program Description (Describe the program and how it will control stormwater runoff from properties after they are developed, e.g. new regulations, practices, or resources for contractors to use Low Impact Development (LID), etc.)	Measurable Goal (What is the end result of this program? What indicator will determine the goal has been met? (e.g., adoption of bylaws/ordinances, amount of implemented practices, development of capacity building resources, etc.)
BMP-1 Ordinance to control runoff pollution from post-construction projects	The Municipality will prepare, approve and adopt an ordinance specifically targeting runoff from post-construction projects impacting the stormwater sewer system covered by the permit.	The number of interventions and sites corrected. 100% inspection rate city-wide.
BMP-2 Standard Operating Procedures for Post-Construction Projects	The Municipality of San Germán propose to develop procedures to avoid runoff impacts to nearby surface waterbodies from stormwater controls located on completed construction projects. This will include impacts from retention ponds or non-covered areas prone to high rates of sedimentation.	Number of projects visited and certified in compliance with local ordinances and USEPA regulations.
BMP-3 Brochures	A series of brochures will be developed to be distributed among residents and managers of new and old housing and apartment projects city-wide aimed to educate them in good practices to avoid impacts to the existing stormwater infrastructure.	To distribute no less than 100 copies on a yearly basis.

EPA Region 2 Small MS4 General Permit

Part I. 2016 Stormwater Management Program (SWMP) Summary (continued)

Good Housekeeping and Pollution Prevention in Municipal Operations (See Section 2.4.7 for detailed information of required BMPs):

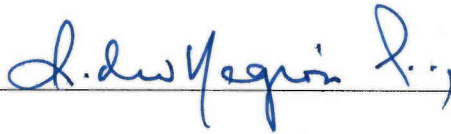
BMP Description or BMP ID (e.g. MCM-1)	Program Description (Describe the program and how it will mitigate stormwater runoff at municipal properties or through municipal activities, e.g. installation of structural stormwater controls on the municipal properties, new practices to reduce pollutant exposure to rain events, runoff management, trainings, etc.)	Measurable Goal (What is the end result of this program? What indicator will determine the goal has been met? (e.g., structural BMPs installed, SOPs developed and implemented, etc.)
BMP-1 Trainings for Municipal Employees	The Municipality will provide trainings on BMPs for mechanics, green-areas workers, painters, electricians, and clerical employees on how to address simple issues identified in the daily tasks of Municipal Operations. The trainings will cover oil, paint and fuel spills, emergency response, good housekeeping, material storage, and record keeping.	The Municipality will provide their employees with two (2) workshops/trainings every year addressing BMPs and their responsibility under the USEPA-NPDES Permit.
BMP-2 SOPs for Municipal Operations	The Municipality will develop and implement the required Standard Operation Procedures for all the operations and maintenance activities conducted daily at Municipal Public Works. The SOPs will cover all activities that may have an impact on the NPDES-MS4 permit.	Number of inspections completed and certified in compliance with local ordinances and USEPA regulations.
BMP-3 SOPs for Municipal Facilities	The Municipality will develop and implement the required SOP for the operation of municipal facilities including parks and open space maintenance, sidewalks, streets and roads; and auto yards.	Number of inspections completed and certified in compliance with local ordinances and USEPA regulations.
BMP-4 Webinars on Water Quality BMPs	The Municipality propose offering a webinar to municipal employees on simple BMPs designed to protect their surface water resources.	The number of participants and efforts developed by the employees after the webinar.

EPA Region 2 Small MS4 General Permit

Part J. Application Certification and Signature

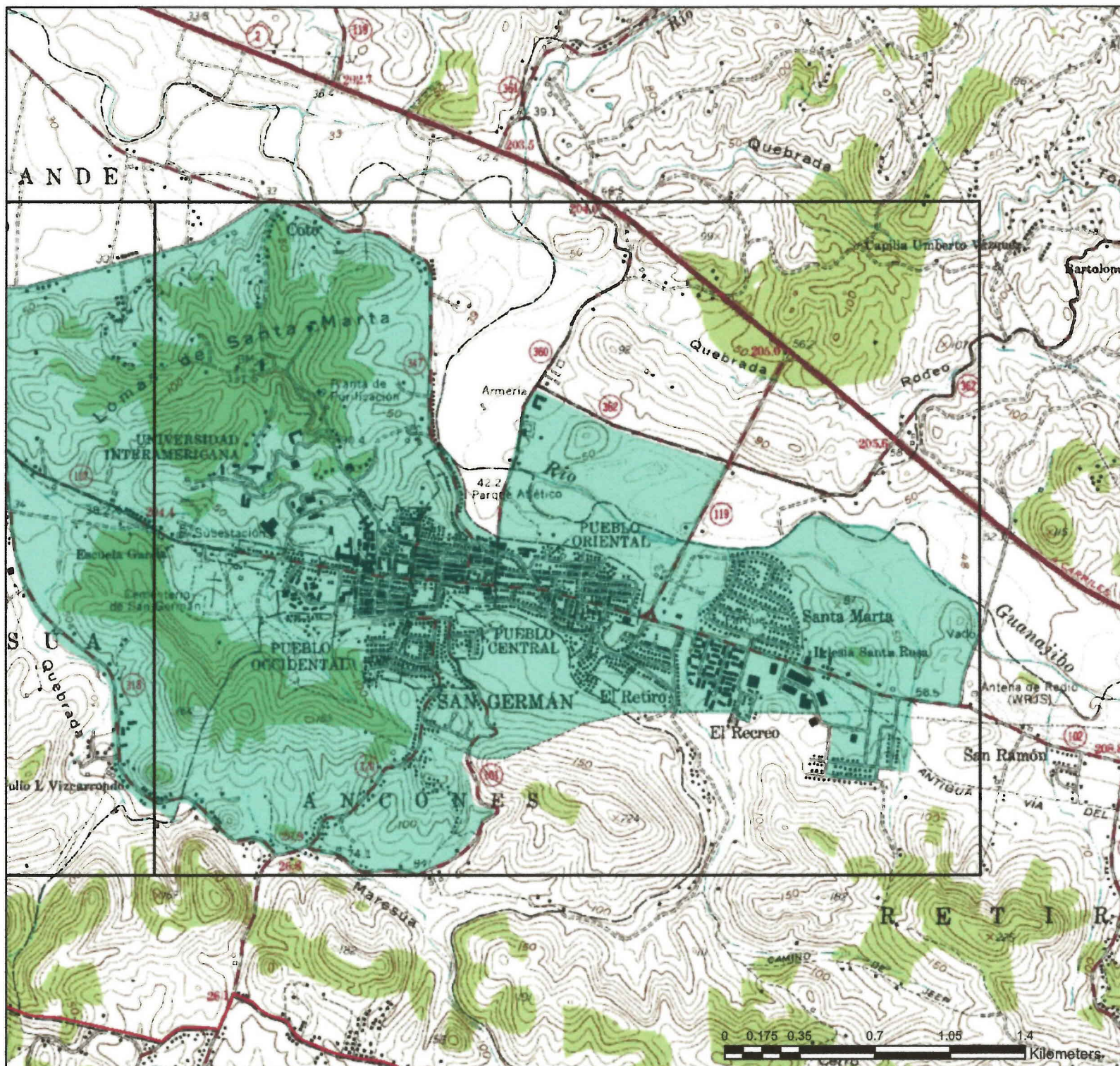
I certify under penalty of law that this document and all attachments were prepared under my direction or supervision in accordance with a system designed to assure that qualified personnel properly gathered and evaluated the information submitted. Based on my inquiry of the person or persons who manage the system, or those persons directly responsible for gathering the information, the information submitted is, to the best of my knowledge and belief, true, accurate, and complete. I am aware that there are significant penalties for submitting false information, including the possibility of fine and imprisonment for knowing violations.

Signature of Mayor/Elected Official: _____

A handwritten signature in blue ink, appearing to read "Isidro Negrón Irizarry", is written over a horizontal line.

Print Name of Mayor/Elected Official: Isidro Negrón Irizarry, Lcdo.

Title: _____ Date: _____



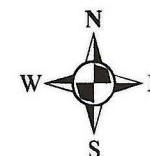
San Germán Census Urbanized Areas & Topographic Map

Legend

- San Germán Urban Zones
- San Germán

Page 2

Projection: Lambert
Coordinate System: NAD83 PR StatePlane



Source: JP, Census, USGS

1:24,000

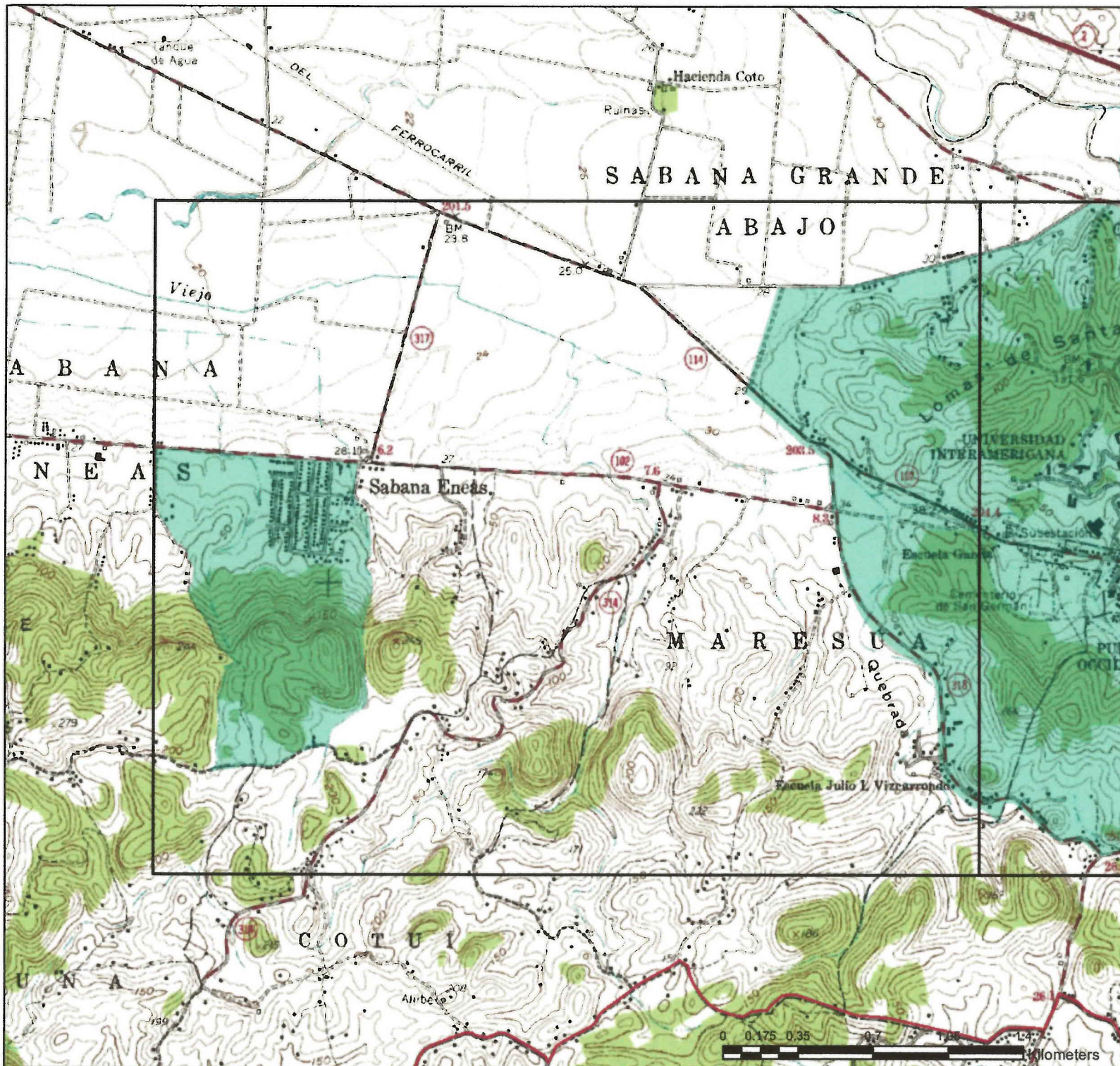


San Germán Urban Zones



2017

0 0.175 0.35 0.7 1.05 1.4 Kilometers



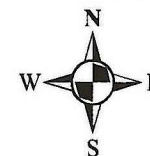
San Germán Census Urbanized Areas & Topographic Map

Legend

- San Germán Urban Zones
- San Germán

Page 1

Projection: Lambert
Coordinate System: NAD83 PR StatePlane



Source: JP, Census, USGS

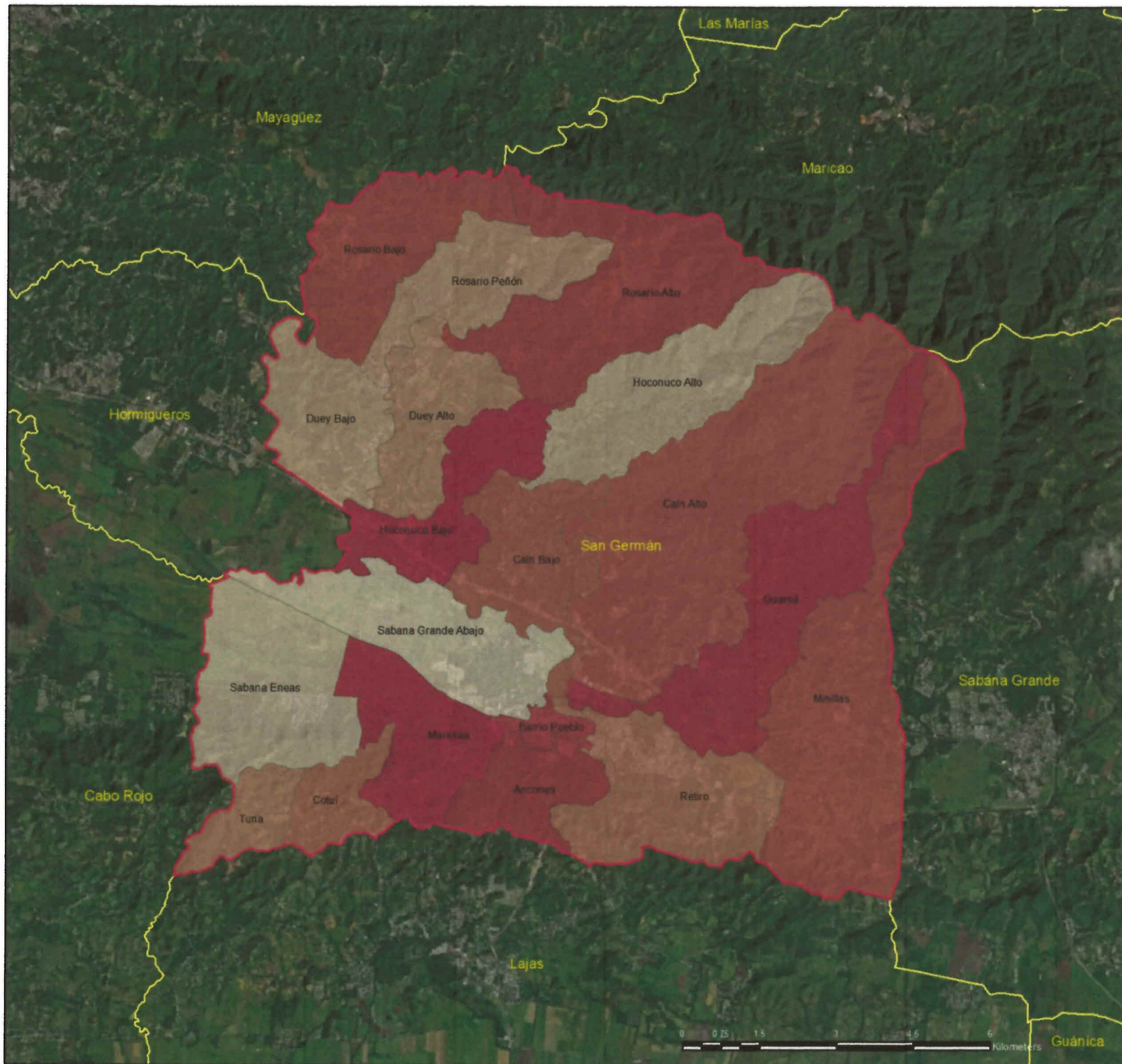
1:24,000



San Germán Urban Zones

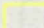


2017

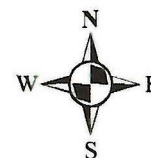


San Germán Wards & Bordering Cities

Legend

-  San Germán
-  Municipalities

Projection: Lambert
Coordinate System: NAD83 PR StatePlane



Source: JP, Census
1:100,000



Puerto Rico



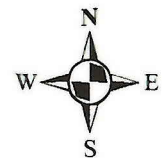
2017



San Germán

Census 2010 Urbanized Areas and Zones

Projection: Lambert
Coordinate System: NAD83 PR StatePlane



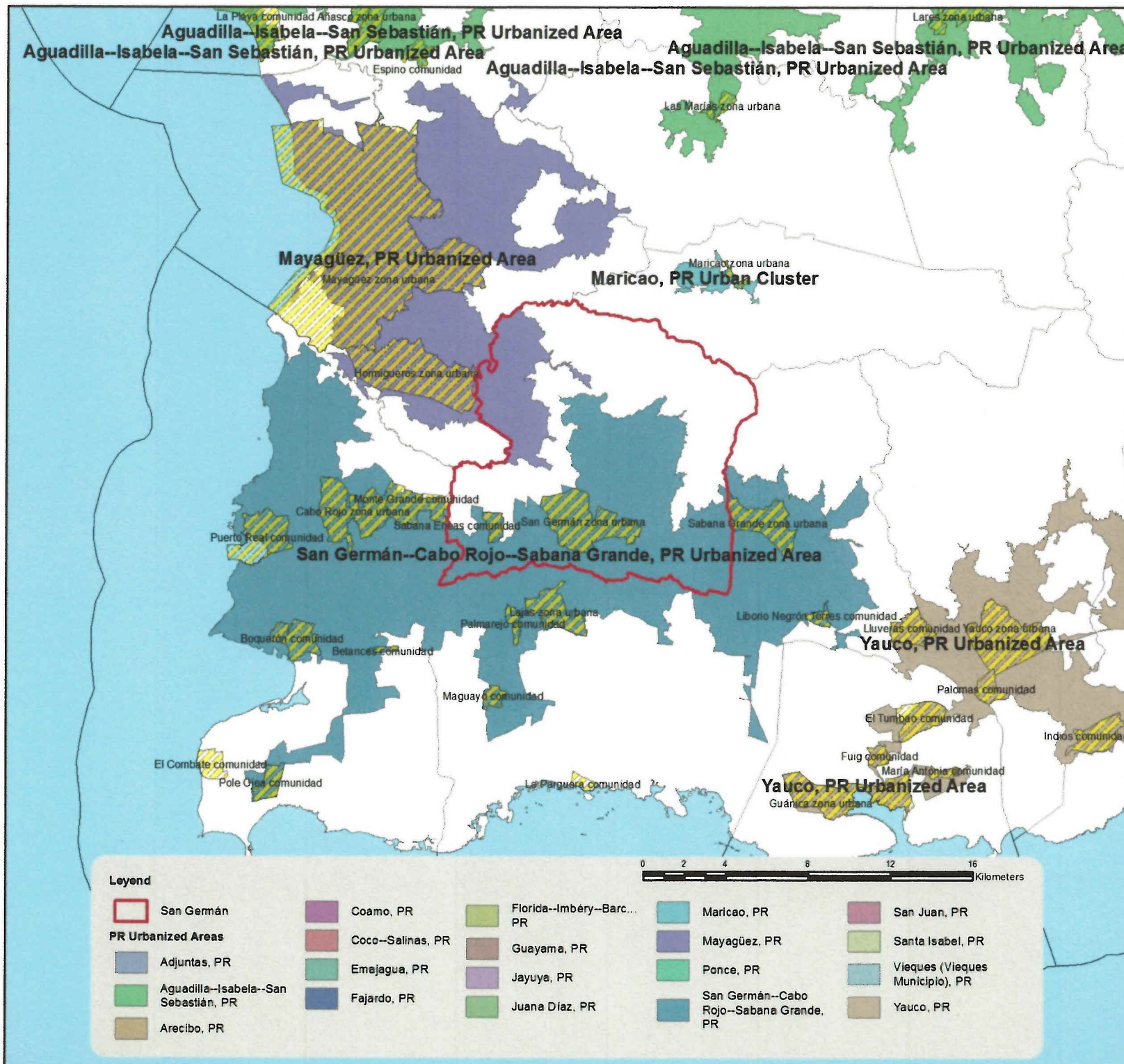
Source: JP, Census
1:250,000

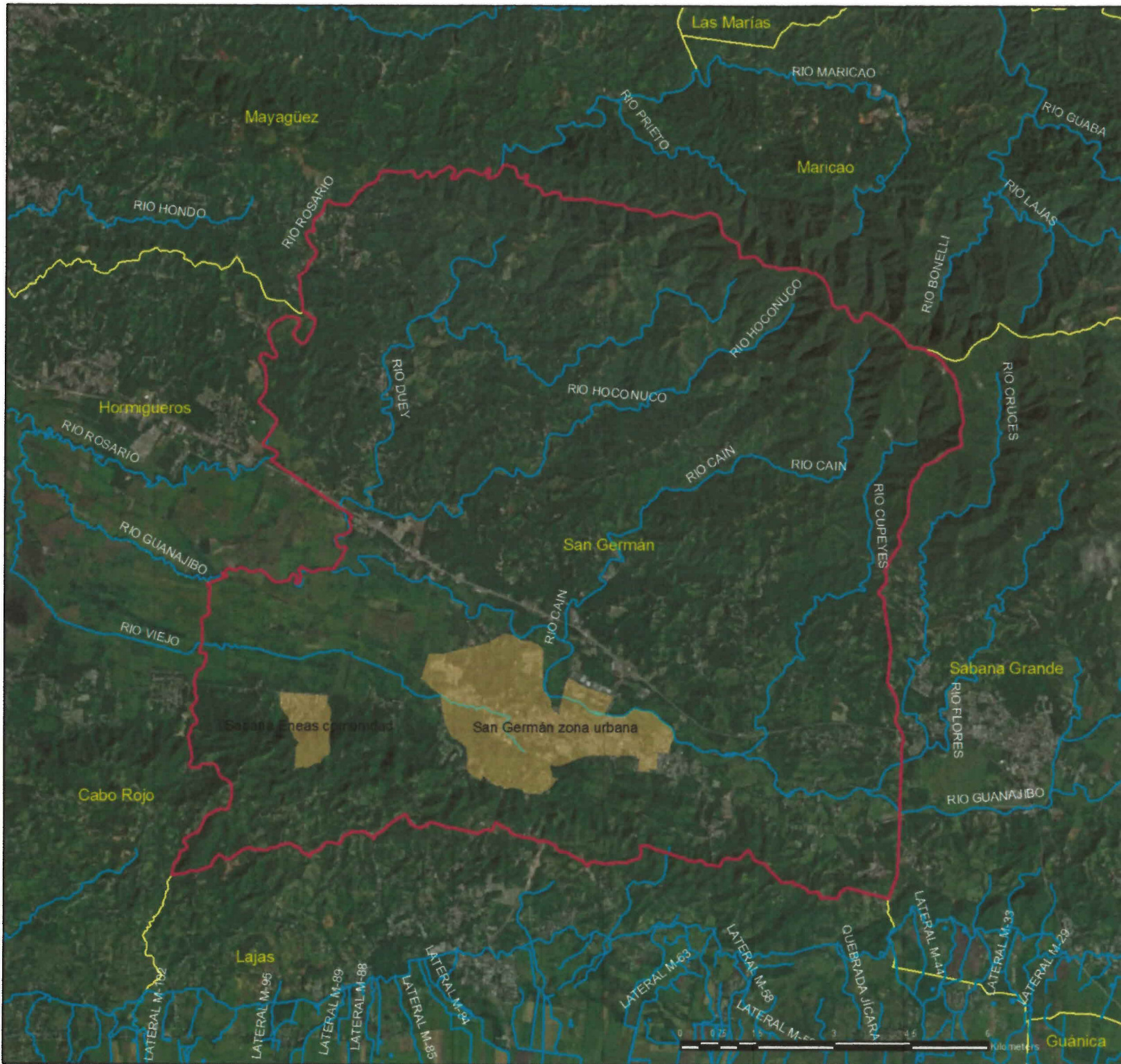


Puerto Rico



2017

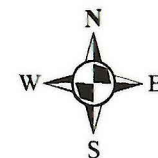




Leyend

-  San Germán
 San Germán Urban Zones
 Main Rivers
 Municipalities

Projection: Lambert
Coordinate System: NAD83 PR StatePlane



Source: JP
1:100,000



Puerto Rico



2017