



MUNICIPALITY OF MOCA NPDES MS4 NOI

2016 AUG 30 AM 10:01

Part A. General Information

1. Name of Municipality or Organization: Municipality of Moca
2. Type: ☐ Federal ☐ State ☒ Municipality ☐ Other: _____
3. Existing Permittee: ☒ Yes ☐ No If yes, provide EPA NPDES Permit Number: P R R 0 4 0 0 2 5
4. Location Address:
 - a. Street: Corner between Calazan Lasalle Street and Don Chemary Street
 - b. City: Moca State: PR Zip Code: 00676
5. Mailing Address:
 - a. Street: Municipality of Moca
 - b. P. O. Box 1571
 - c. City: Moca State: PR Zip Code: 00676
6. Telephone Numbers:
787-877-3011
7. E-mail: kikoaviles10@hotmail.com
8. Standard Industrial Classification (SIC) Code (see instructions for common codes): 9 1 9 9
9. *Approximate center of the regulated portion of the MS4.*
Latitude: _____ Longitude: _____
1 8° 2 3' 41" N (degrees, minutes, seconds) 6 7° 0 6' 4 8" W (degrees, minutes, seconds)

Part B. Primary MS4 Program Manager Contact Information

1. Name: Mr. Félix Méndez
2. Position Title: Planning and Development Department Acting Director
3. Stormwater Management Program (SWMP) Location (Web address or physical location):
<http://www.municipiodemoca.com/panelwi/descargas/descargas/38ddff AttachmentA MocaRevisedSWM P Tt Final.pdf>
A hard copy of the SWMP also is available in the Municipality of Moca Technological Centers.
4. Mailing Address:
 - a. Street: Municipality of Moca
 - b. P. O. Box 1571
 - c. City: Moca State: PR Zip Code: 00676

5. Telephone Number: 787-818-4379
6. E-mail: Félix Méndez (fmendez.eng@gmail.com)

Part C. Eligibility Determination

1. Endangered Species Act (ESA) determination complete? ☒ Yes ☐ No
- a. Eligibility Criteria (check all that apply): ☒ A ☐ B ☐ C ☐ D ☐ E
2. National Historic Preservation Act (NHPA) determination complete? ☒ Yes ☐ No
- a. Eligibility Criteria (check all that apply): ☐ A ☒ B ☐ C ☐ D

Part D. Map/Boundaries

1. MS4/Organization Description of Regulated Boundaries (narrative):
The United States Census has identified an *urbanized area* (UA) for the Municipality that occupies a surface area of approximately 34 square miles. The geographic boundaries of the MS4 plan are the municipality limits and the urban growth boundary (UGB). The Municipality's service area for stormwater planning encompasses approximately 0.52 square miles located within the UA, and approximately 2 square miles inside the UA of actual stormwater infrastructure. The Municipality has limited authority and responsibility for planning, building, operating, maintaining, and regulating the stormwater drainage system within its limits. Therefore, and although the MS4 NPDES permit imposes total responsibility on the Municipality over its compliance, part of the stormwater development and management responsibilities fall under the state government.
The Municipality of Moca MS4 is interconnected with the Puerto Rico Highway and Transportation Authority's MS4, which is operated by the Puerto Rico Department of Transportation and Public Works. A memorandum of understanding will be discussed with the Puerto Rico Highway and Transportation Authority to implement the best management practices (BMPs) proposed in the SWMP.
2. Location Map/Boundaries. A location map must be attached showing the pertinent city, town, wards, or boundaries, the boundaries of the small MS4, including any surface water body (ies), and the UA when applicable.

Is map attached? ☒ Yes ☐ No

For Location Maps/Figures refer to Appendix A.

Part E. MS4 Infrastructure (if covered under the 2006 general permit)

1. Estimated Percent of Outfall Map Complete? (*Part 4.2.3 of 2006 general permit*): 100%
- a. If 100% of 2006 requirements are not met, enter an estimated date of completion: N/A
(MM/DD/YYYY)
- b. Web address where MS4 map is published: A copy of the MS4 map is available in the Municipality of Moca Planning and Development Department Office.

If outfall map is unavailable on the internet an electronic or paper copy of the outfall map must be included with NOI submission.

Part F. Bylaw/Ordinance Development (if covered under the 2006 general permit)

1. Illicit Discharge Detection and Elimination (IDDE) authority adopted? ☒ Yes ☐ No

a. Effective Date or Estimated Date of Adoption: 02/27/2014
 (MM/DD/YYYY)

2. Construction/Erosion and Sediment Control authority adopted? ☒ Yes ☐ No

a. Effective Date or Estimated Date of Adoption: 02/27/2014
 (MM/DD/YYYY)

3. Post-Construction Stormwater Management adopted? ☒ Yes ☐ No

a. Effective Date or Estimated Date of Adoption: 02/27/2014
 (MM/DD/YYYY)

Part G. Receiving Waters

List the names of all surface waterbody segments to which your MS4 discharges. For each waterbody segment, please report the number of outfalls discharging into it and, if applicable, any impairments. You may attach additional information.

Waterbody Segment that receives flow from the MS4	Number of Outfalls into receiving waterbody segment	Have any monitoring been performed to outfalls? (Yes/No)	List of Pollutant(s) causing impairment (if applicable)	List of TMDL Pollutant (s) (if any)
Rio Culebrinas	Thirty-two (32) Total Outfalls in Pueblo Ward/Urban Area Not Direct Discharges	Yes	Arsenic (0510) Copper (0530) Turbidity (2500)	Included in 2014 list for TMDL development within the next 2 years Total Coliforms (1700) Lead (0550)

Part H. Summary of Stormwater Management Program (SWMP) under the 2006 Small MS4 General Permit
 For every measurable goal and associated Best Management Practice (BMP) listed in the adopted program, provide the following information (You may include additional pages):

BMP Description or BMP ID (e.g. MCM-1)	Goal Achieved? (Yes/No)	Continued in next Permit cycle? (Yes/No)	Who was the targeted audience? Explain reason for not achieving goal.	Modification(s) to goals or BMP for next permit cycle
Develop General Awareness Message	Yes	Yes	General Community, Employees, Business Owners N/A	The General Awareness Message will be updated with the new POC
Develop Awareness Survey	Yes	No	General Community, Employees, Business Owners N/A	N/A
Distribute Awareness Survey	Yes	No	General Community, Employees, Business Owners N/A	N/A
Analyze Survey Results	Yes	No	N/A	N/A
Develop and Implement EEP	No	Yes	General Community, Employees, Business Owners Education Activities were conducted without developing the EEP.	Development and Implementation of an EEP
Post General Storm Water Information on Website	Yes	Yes	General Community, Employees, Business Owners N/A	Continue with BMP implementation
Publish Articles on Storm Water Pollution Prevention	Yes	Yes	General Community, Employees, Business Owners N/A	Continue with BMP implementation
Conduct Environmental Kids Club Presentations	Yes	Yes	School Kids N/A	Continue with BMP implementation
Incorporate storm water message into recycling program presentations	Yes	Yes	General Community, Employees, Business Owners N/A	Continue with BMP implementation

Part H. Summary of Stormwater Management Program (SWMP) under the 2006 Small MS4 General Permit
 For every measurable goal and associated Best Management Practice (BMP) listed in the adopted program, provide the following information (You may include additional pages):

BMP Description or BMP ID (e.g. MCM-1)	Goal Achieved? (Yes/No)	Continued in next Permit cycle? (Yes/No)	Who was the targeted audience? Explain reason for not achieving goal.	Modification(s) to goals or BMP for next permit cycle
Conduct Commercial Facilities Owners Presentations	Yes	Yes	Business Owners	Continue with BMP implementation
Septic Tanks Home Owners Training	Yes	Yes	General Community	Continue with BMP implementation
Development of the Municipal Informative Bulletin	Yes	Yes	General Community, Employees, Business Owners	Continue with BMP implementation
Inform and Solicit Public Input at the Municipality's Annual Achievement Report	Yes	Yes	General Community, Employees, Business Owners	Continue with BMP implementation
Volunteer Events (i.e., stream and lake cleanups)	Yes	Yes	General Community, Employees, Business Owners	Continue with BMP implementation
Incorporate Storm Water Educative Information in the Activity named "La Balseada del Rio Culebrinas"	Yes	NO	General Community, Employees, Business Owners The activity was cancelled	Modified in 2016 MS4's SWMP
Develop Art for Storm Drain Marker	Yes	No	General Community, Employees, Business Owners	N/A

Part H. Summary of Stormwater Management Program (SWMP) under the 2006 Small MS4 General Permit
 For every measurable goal and associated Best Management Practice (BMP) listed in the adopted program, provide the following information (You may include additional pages):

BMP Description or BMP ID (e.g. MCM-1)	Goal Achieved? (Yes/No)	Continued in next Permit cycle? (Yes/No)	Who was the targeted audience? Explain reason for not achieving goal.	Modification(s) to goals or BMP for next permit cycle
Implement Storm Drain Marker Program	Yes	Yes	General Community, Employees, Business Owners	Continue with BMP Implementation
Review of Existing Ordinance(s)	Yes	Yes	General Community, Employees, Business Owners	Ordinances Update as necessary
Development of IDDE, Construction, and Post Construction Ordinance and DOPs	Yes	N/A	General Community, Employees, Business Owners	N/A
Storm Sewer Mapping	Yes	Yes	N/A	Update as Necessary
Development of IDDE Plan	Yes	Yes	N/A	Update as Necessary
Dry Weather Inspections	Yes	Yes	General Community, Employees, Business Owners	Continue with BMP Implementation
Development and Implementation of SSO Reduction Plan	Yes	Yes	General Community, Employees, Business Owners	Continue with BMP Implementation
Develop ERP	No	Yes	General Community, Employees, Business Owners	Develop ERP

Part H. Summary of Stormwater Management Program (SWMP) under the 2006 Small MS4 General Permit
 For every measurable goal and associated Best Management Practice (BMP) listed in the adopted program, provide the following information (You may include additional pages):

BMP Description or BMP ID (e.g. MCM-1)	Goal Achieved? (Yes/No)	Continued in next Permit cycle? (Yes/No)	Who was the targeted audience? Explain reason for not achieving goal.	Modification(s) to goals or BMP for next permit cycle
Develop Construction SW Pollution Prevention Educational Material	No	Yes	Construction Engineers, Employees, Developers, and General Community Members. Wasn't completed due to lack of staff and resources	Develop Construction SW Pollution Prevention Educational Material
Conduct Plan Review and Inspections Staff Trainings	Yes	Yes	Municipal Employees	Continue with BMP Implementation
Conduct Public and Private Projects Inspections	Yes	Yes	Municipal Inspectors	Continue with BMP Implementation
Develop Municipal Facility List	Yes	Yes	N/A	Annual Update
Perform Initial Facility Inventory & Inspections	Yes	Yes	N/A	Annual Update
Incorporate Municipal Facilities on MS4 GIS Maps	Yes	Yes	N/A	Annual Update
Conduct Annual Inspections at High Priority Municipal Facilities	Yes	Yes	Municipal Employees	Continue with BMP implementation

Part H. Summary of Stormwater Management Program (SWMP) under the 2006 Small MS4 General Permit
 For every measurable goal and associated Best Management Practice (BMP) listed in the adopted program, provide the following information (You may include additional pages):

BMP Description or BMP ID (e.g. MCM-1)	Goal Achieved? (Yes/No)	Continued in next Permit cycle? (Yes/No)	Who was the targeted audience? Explain reason for not achieving goal.	Modification(s) to goals or BMP for next permit cycle
Develop and Implementation of FPPPs for high priority facilities	Yes	Yes	Municipal Employees	Annual Update
Develop Spill Response Plan for Applicable Facilities	No	Yes	Lack of resources and the Municipal Staff was waiting to complete the New Public Works Facility Construction	Develop Spill Response Plan for Applicable Facilities
Develop Activity-Specific SOPs	No	Yes	Municipal Employees	Develop Activity-Specific SOPs
Clean Debris from MS4	Yes	Yes	N/A	Continue with the BMP Implementation
Sweep Streets	Yes	Yes	N/A	Continue with the BMP Implementation

Part I. 2016 Stormwater Management Program (SWMP) Summary
Public Education and Outreach (See Part 2.4.2 for detailed information of required BMPs):

BMP Description or BMP ID (e.g. MCM-1)	Education Topic (Identify the issue your BMP is educating the public about.)	Outreach Method (Describe the method used to convey this topic, e.g. mailing, events, school, etc.)	Measurable Goal (What is the end result of this program? What indicator will determine the goal has been met? (e.g., number mailing sent, people at event, class participation, etc.)
Complete the Development of the MS4 Education Plan	<ul style="list-style-type: none"> Identifying Illicit Discharges Copper and Arsenic Stormwater Pollution Sources Construction and Post-construction Best 	Bookmarks and MS PowerPoint presentations will be available to educate MS4 residents, educators, industrial sector, and municipal staff.	Development of the MS4 Educational Plan

Part I. 2016 Stormwater Management Program (SWMP) Summary

Public Education and Outreach (See Part 2.4.2 for detailed information of required BMPs):

BMP Description or BMP ID (e.g. MCM-1)	Education Topic (Identify the issue your BMP is educating the public about.)	Outreach Method (Describe the method used to convey this topic, e.g. mailing, events, school, etc.)	Measurable Goal (What is the end result of this program? What indicator will determine the goal has been met? (e.g., number mailing sent, people at event, class participation, etc.)
	Management Practices <ul style="list-style-type: none"> Failing Septic System as a Pollutant Source Oil and Grease Management in Residential and Commercial Areas Trash Free Waters Initiatives Community and Volunteers Programs 		
Update the Educational Material on Pollutants of Concern (POCs) for Each Target Audience	<ul style="list-style-type: none"> Identifying Illicit Discharges Copper and Arsenic Stormwater Pollution Sources Construction and Postconstruction Best Management Practices Failing Septic System as a Pollutant Source Oil and Grease Management in Residential and Commercial Areas Trash Free Waters Initiatives Community and Volunteers Programs 	Bookmarks, magnets, MS PowerPoint presentations, D-Boards, and other reusable promotional material will be available. The Educational Campaign will be mostly paperless. Printed brochures will <i>not</i> be developed.	Total amount of magnets, bookmarks, MS PowerPoint presentations, and D-Board kit art developed
Complete the Development of the MS4 Education Plan	<ul style="list-style-type: none"> Identifying Illicit Discharges Copper and Arsenic Stormwater Pollution Sources Construction and Post-construction Best Management Practices Failing Septic System as 	Bookmarks and MS PowerPoint presentations will be available to educate MS4 residents, educators, industrial sector, and municipal staff.	Development of the MS4 Educational Plan

Part I. 2016 Stormwater Management Program (SWMP) Summary

Public Education and Outreach (See Part 2.4.2 for detailed information of required BMPs):

BMP Description or BMP ID (e.g. MCM-1)	Education Topic (Identify the issue your BMP is educating the public about.)	Outreach Method (Describe the method used to convey this topic, e.g. mailing, events, school, etc.)	Measurable Goal (What is the end result of this program? What indicator will determine the goal has been met? (e.g., number mailing sent, people at event, class participation, etc.)
	<ul style="list-style-type: none"> a Pollutant Source Oil and Grease Management in Residential and Commercial Areas Trash Free Waters Initiatives Community and Volunteers Programs 		
Update the Educational Material on Pollutants of Concern (POCs) for Each Target Audience	<ul style="list-style-type: none"> Identifying Illicit Discharges Copper and Arsenic Stormwater Pollution Sources Construction and Postconstruction Best Management Practices Failing Septic System as a Pollutant Source Oil and Grease Management in Residential and Commercial Areas Trash Free Waters Initiatives Community and Volunteers Programs 	<p>Bookmarks, magnets, MS PowerPoint presentations, D-Boards, and other reusable promotional material will be available.</p> <p>The Educational Campaign will be mostly paperless. Printed brochures will <i>not</i> be developed.</p>	Total amount of magnets, bookmarks, MS PowerPoint presentations, and D-Board kit art developed
Develop and Sign Collaboration Agreements with local agencies such as Puerto Rico Aqueduct and Sewer Authority	<ul style="list-style-type: none"> General Concepts of Stormwater Pollution Prevention Illicit Connections Pollutants of Concern and Potential Sources Oil and Grease Management Program Trash Free Waters Initiatives 	Collaboration agreement.	Total number of collaboration agreements signed with agencies

Part I. 2016 Stormwater Management Program (SWMP) Summary

Public Education and Outreach (See Part 2.4.2 for detailed information of required BMPs):

BMP Description or BMP ID (e.g. MCM-1)	Education Topic (Identify the issue your BMP is educating the public about.)	Outreach Method (Describe the method used to convey this topic, e.g. mailing, events, school, etc.)	Measurable Goal (What is the end result of this program? What indicator will determine the goal has been met? (e.g., number mailing sent, people at event, class participation, etc.)
Continue with the MS4 Education Plan Implementation	<ul style="list-style-type: none"> Identifying Illicit Discharges Copper and Arsenic Stormwater Pollution Sources Construction and Postconstruction Best Management Practices Failing Septic System as a Pollutant Source Oil and Grease Management in Residential and Commercial Areas Trash Free Waters Initiatives Community and Volunteers Programs 	Bookmarks, magnets, MS PowerPoint presentations, D-Boards, school environmental clubs. Printed brochures will <i>not</i> be developed.	<ul style="list-style-type: none"> Total amount of educational material distributed Total amount of environmental kids clubs
Conduct Municipal Employee Training	Municipal Staff will be trained on: <ul style="list-style-type: none"> Stormwater Pollution Prevention, and Moca MS4 SWMP Requirements. 	Trainings and workshops.	Total number of employees trained

Part I. 2016 Stormwater Management Program (SWMP) Summary (continued)

Public Involvement and Participation (See Part 2.4.3 for detailed information of required BMPs):

BMP Description or BMP ID (e.g. MCM-1)	Program Description (Describe the program and how it will inspire public participation, e.g. special events, volunteer sampling and monitoring efforts, household hazardous waste recycling, etc.)	Measurable Goal (What is the end result of this program? What indicator will determine the goal has been met? (e.g., participation, amount of sampling performed, waste collected, etc.)
Continue Publishing the Moca Informative Newspaper	General educational and SWMP implementation activities and status will be published in the informative newspaper	Developing and publishing the informative newspaper

Part I. <u>2016 Stormwater Management Program (SWMP) Summary (continued)</u> <u>Public Involvement and Participation (See Part 2.4.3 for detailed information of required BMPs):</u>		
BMP Description or BMP ID (e.g. MCM-1)	Program Description (Describe the program and how it will inspire public participation, e.g. special events, volunteer sampling and monitoring efforts, household hazardous waste recycling, etc.)	Measurable Goal (What is the end result of this program? What indicator will determine the goal has been met? (e.g., participation, amount of sampling performed, waste collected, etc.)
Post MS4 Stormwater Articles on the Municipal Facebook Page	Short articles on how to prevent stormwater pollution posted on the municipal Facebook page will inform and inspire the general audience on what to do to prevent stormwater pollution.	<ul style="list-style-type: none"> Number of people reached by the Facebook page Total likes on the Facebook page
Post Digital and Hard Copies of the SWMP and Its Annual Reports in the Municipal Webpage and in the Electronic Libraries	SWMP will be posted in the municipal Web page and electronic libraries to give the general community the opportunity to review and provide comments.	Number of general community comments received that are evaluated and addressed
Continue with the Implementation of the Storm Drain Marking Activities	Continue with the acquisition and installation of the markers on the storm drains.	<ul style="list-style-type: none"> Total number of storm drains identified Number of volunteers participating in the stormwater labeling activities
Conduct Employee Training	Municipal staff shall be trained on: <ul style="list-style-type: none"> Stormwater Pollution Prevention, and Moca MS4 SWMP Requirements. 	Total number of employees trained

Part I. <u>2016 Stormwater Management Program (SWMP) Summary (continued)</u> <u>Illicit Discharge Detection and Elimination (See Part 2.4.4 for detailed information of required BMPs):</u>		
BMP Description or BMP ID (e.g. MCM-1)	Program Description (Describe the program and how it will identify and remove illicit connections from the MS4, e.g. new regulations, investigation practices, removal of illicit connections, etc.)	Measurable Goal (What is the end result of this program? What indicator will determine the goal has been met? (e.g., adoption of bylaws/ordinances, amount of investigation performed, identified and removed illicit connections, etc.)
Update the IDDE Plan	The Moca IDDE Plan included best practices to identify and eliminate the MS4 illicit connections. The plan will be updated to include BMPs to address the current POC and potential sources.	IDDE Plan updated

Part I. 2016 Stormwater Management Program (SWMP) Summary (continued) Illicit Discharge Detection and Elimination (See Part 2.4.4 for detailed information of required BMPs):		
BMP Description or BMP ID (e.g. MCM-1)	Program Description (Describe the program and how it will identify and remove illicit connections from the MS4, e.g. new regulations, investigation practices, removal of illicit connections, etc.)	Measurable Goal (What is the end result of this program? What indicator will determine the goal has been met? (e.g., adoption of bylaws/ordinances, amount of investigation performed, identified and removed illicit connections, etc.)
Implement the Updated IDDE Plan	Field work to identify and eliminate illicit discharges and connections into the MS4 catch basin area will be conducted on a regular bases. At least once per month, the MS4 team will work in the field implementing the IDDE Plan.	Amount of illicit connections and discharges identified and eliminated
Develop a Database of Illicit Discharges	Illicit connections identified in Moca's MS4 will be documented in an MS Excel database.	Update the database on a monthly basis
Keep the MS4 Infrastructure Maps Updated	The MS4 maps have been completed and the Municipality needs to develop a system to ensure that they are continuously updated. The MS4 infrastructure maps are essential to implementing the illicit discharges identification and elimination plan.	MS4 infrastructure maps updated every 3 months
Implement the Dry Weather and Wet Weather Outfalls Monitoring	To identify potential illicit discharges and to measure progress of implementing the IDDE Plan, it is essential to develop and implement a program to monitor the water quality of the outfall discharges.	<ul style="list-style-type: none"> • Water quality monitoring results • Amount of outfalls monitored
Conduct a Feasibility Study for Continuous Electronic Monitoring	A feasibility study for continuous electronic monitoring of the Rio Culebrinas outfalls will provide information on indicators of potential illicit discharges.	Completion of continuous monitoring feasibility study
Develop Spill Prevention, Control, and Countermeasure (SPCC) Plans	Establish procedures, methods, equipment, and other requirements to prevent the discharge of oil into the navigable waters of the United States.	<ul style="list-style-type: none"> • SPCC availability • Implementation of SPCC

Part I. 2016 Stormwater Management Program (SWMP) Summary (continued)—Not Required for a Nonconventional MS4 Construction Site Stormwater Runoff Control (See Part 2.4.5 for detailed information of required BMPs):		

BMP Description or BMP ID (e.g. MCM-1)	Program Description (Describe the program and how it will help control stormwater runoff at construction sites, e.g. new regulations, construction practices, inspection protocols, etc.)	Measurable Goal (What is the end result of this program? What indicator will determine the goal has been met? (e.g., adoption of bylaws/ordinances, amount of inspections performed and sites actively regulated, etc.)
Implement Erosion and Sediment Control Ordinance	Proper ordinance enforcement is key to achieving compliance of the ordinance and of the general permit.	Number of construction projects inspected that are in compliance with the MS4 ordinance requirements
Revise and Modify Bid Documents and Contracts	Include MS4 general permit and municipal MS4 ordinance compliance requirements in bid documents and contracts.	Revision and modification of bid specifications, documents, and contract templates
Distribute Construction and Postconstruction Educational Material	A poster with stormwater pollution prevention BMPs will be provided to construction project managers during inspections.	Number of construction project sites where the posters are displayed
Conduct Construction Projects MS4 Compliance Inspections	Conducting regular construction project inspections and providing MS4 permit compliance educational material when needed will help identify municipal ordinance violations and will increase compliance with the MS4 general permit requirements.	Number of inspections conducted at each private and public project
Provide Construction and Postconstruction BMPs Training to Municipal Public Works Employees, Contractors, and Developers	Providing classroom and practical training on construction and postconstruction BMPs to municipal employees, contractors, and developers will increase knowledge on those best practices and, consequently, will increase compliance with the regulations and reduce stormwater pollution.	Number of inspection staff and contractors trained on stormwater pollution prevention BMPs
Develop a Construction Stormwater Pollution Prevention Interactive Section in the Municipal Web Page	Posting educational and compliance information on the municipal Web page will increase the number of community members educated on stormwater pollution prevention practices. In addition, it will provide an alternative method for the general public to report noncompliance activities or illicit discharges.	<ul style="list-style-type: none"> Amount of MS4 information downloaded from the municipal Web page Number of noncompliance notifications received through the municipal Web page

Part I. 2016 Stormwater Management Program (SWMP) Summary (continued)—Not Required for a Nonconventional MS4

Postconstruction Stormwater Management in New Development and Redevelopment (See Part 2.4.6 for detailed information of required BMPs):

--	--	--

BMP Description or BMP ID (e.g. MCM-1)	Program Description (Describe the program and how it will control stormwater runoff from properties after they are developed, e.g. new regulations, practices, or resources for contractors to use Low Impact Development (LID), etc.)	Measurable Goal (What is the end result of this program? What indicator will determine the goal has been met? (e.g., adoption of bylaws/ordinances, amount of implemented practices, development of capacity building resources, etc.)
Develop an Inventory of Existing Postconstruction Control Measures in Municipal Facilities	Postconstruction measures for long-term maintenance are required to ensure the operation of municipal facilities in the long term.	Municipal postconstruction measures inventory submittal
Develop a Municipal Facilities Postconstruction Plan	Implementing postconstruction BMPs has been a challenge for municipalities. The Municipality of Moca will begin by increasing the level of knowledge of the different postconstruction practices by evaluating the best options to be implemented in municipal facilities. The plan will include detailed descriptions of infiltration, filtration, and sedimentation BMPs such as bioinfiltration/bioretenion with/without underdrain, infiltration basin and/or trench, permeable pavement, stormwater harvesting, stormwater ponds, swales, and other recommended practices.	<ul style="list-style-type: none"> • Municipal facilities postconstruction plan approval • Postconstruction educational material development
Implement the Municipal Facilities Postconstruction Plan	Implementing the postconstruction BMPs in municipal facilities will have a direct impact in reducing runoff and stormwater pollution potential. In addition, local expertise will be developed within municipal employees that will facilitate the implementation of the Postconstruction plan in other areas.	<ul style="list-style-type: none"> • Number of postconstruction BMPs implemented at municipal facilities • Number of municipal facilities impacted
Provide Postconstruction BMPs Training to Municipal Public Works Employees, Contractors, and Developers	Providing classroom and practical training on construction and postconstruction BMPs to municipal employees, contractors, and developers will increase knowledge of those practices and, consequently, will increase compliance with the regulations and reduce stormwater pollution.	Number of inspection staff and contractors trained on stormwater pollution prevention BMPs

Part I. [2016 Stormwater Management Program \(SWMP\) Summary \(continued\)](#)

[Good Housekeeping and Pollution Prevention in Municipal Operations](#) (See Part 2.4.7 for detailed information of required BMPs):

BMP Description or BMP ID (e.g. MCM-1)	Program Description (Describe the program and how it will mitigate stormwater runoff at municipal properties or through municipal activities, e.g. installation of structural stormwater controls on the municipal properties, new practices to reduce pollutant exposure to rain events, runoff management, trainings, etc.)	Measurable Goal (What is the end result of this program? What indicator will determine the goal has been met? (e.g., structural BMPs installed, SOPs developed and implemented, etc.)
Update the Municipal Facilities List	The Municipal Facilities List will be updated to include potential pollutants likely associated with specific municipal facilities. Identifying the pollutants that could be generated by each municipal facility will facilitate the identification of specific best practices that will be implemented to minimize runoff and stormwater pollution.	Updated Municipal Facility List
Develop Pollution Prevention Fact Sheets for Municipal Activities	Develop pollution prevention fact sheets that will be available in municipal areas or facilities with high pollution potential. Those fact sheets will include the what/where/when/how of pollution prevention BMPs and will provide a daily reminder to municipal employees. Stormwater pollution prevention practices fact sheets will be developed for the following municipal activities: <ul style="list-style-type: none"> • Road and Street Maintenance • Sidewalk, City Plaza, and Municipal Parking Lot Maintenance • Landscape Maintenance • Stormwater Drainage System Operation and Maintenance • Waste Handling and Disposal • Recyclable Material Handling and Disposal • Household Hazardous Material Handling and Disposal • Automobile Maintenance and Car Wash-related Tasks 	Fact sheet development and posting in municipal facilities
Implement Green Infrastructure Practices in Municipal Facilities	Green infrastructure measures for stormwater pollution prevention will be implemented in municipal facilities. Measures such as tree boxes and infiltration gardens in municipal parking lots and providing regular maintenance to those areas will minimize the stormwater pollution potential.	Number of green infrastructure measures installed in municipal facilities
Develop and Implement a Green Chemistry Program in Municipal Facilities	Substituting green products for chemicals in activities such as car washing will minimize the potential of polluting stormwater.	Green products replacing or substituting for chemicals

Part I. 2016 Stormwater Management Program (SWMP) Summary (continued)

Good Housekeeping and Pollution Prevention in Municipal Operations (See Part 2.4.7 for detailed information of required BMPs):

BMP Description or BMP ID (e.g. MCM-1)	Program Description (Describe the program and how it will mitigate stormwater runoff at municipal properties or through municipal activities, e.g. installation of structural stormwater controls on the municipal properties, new practices to reduce pollutant exposure to rain events, runoff management, trainings, etc.)	Measurable Goal (What is the end result of this program? What indicator will determine the goal has been met? (e.g., structural BMPs installed, SOPs developed and implemented, etc.)
Street Sweeping on Urbanized Areas	Every day the town center main streets and sidewalks are swept by municipal employees.	Sweeping the town center streets and sidewalk every day
Provide Good Housekeeping BMPs Training to Municipal Employees	Providing classroom and practical training on good housekeeping practices to municipal employees will consequently increase compliance with the regulations and reduce stormwater pollution.	Number of municipal staff trained on good housekeeping practices and stormwater pollution prevention BMPs

Part J. Application Certification and Signature

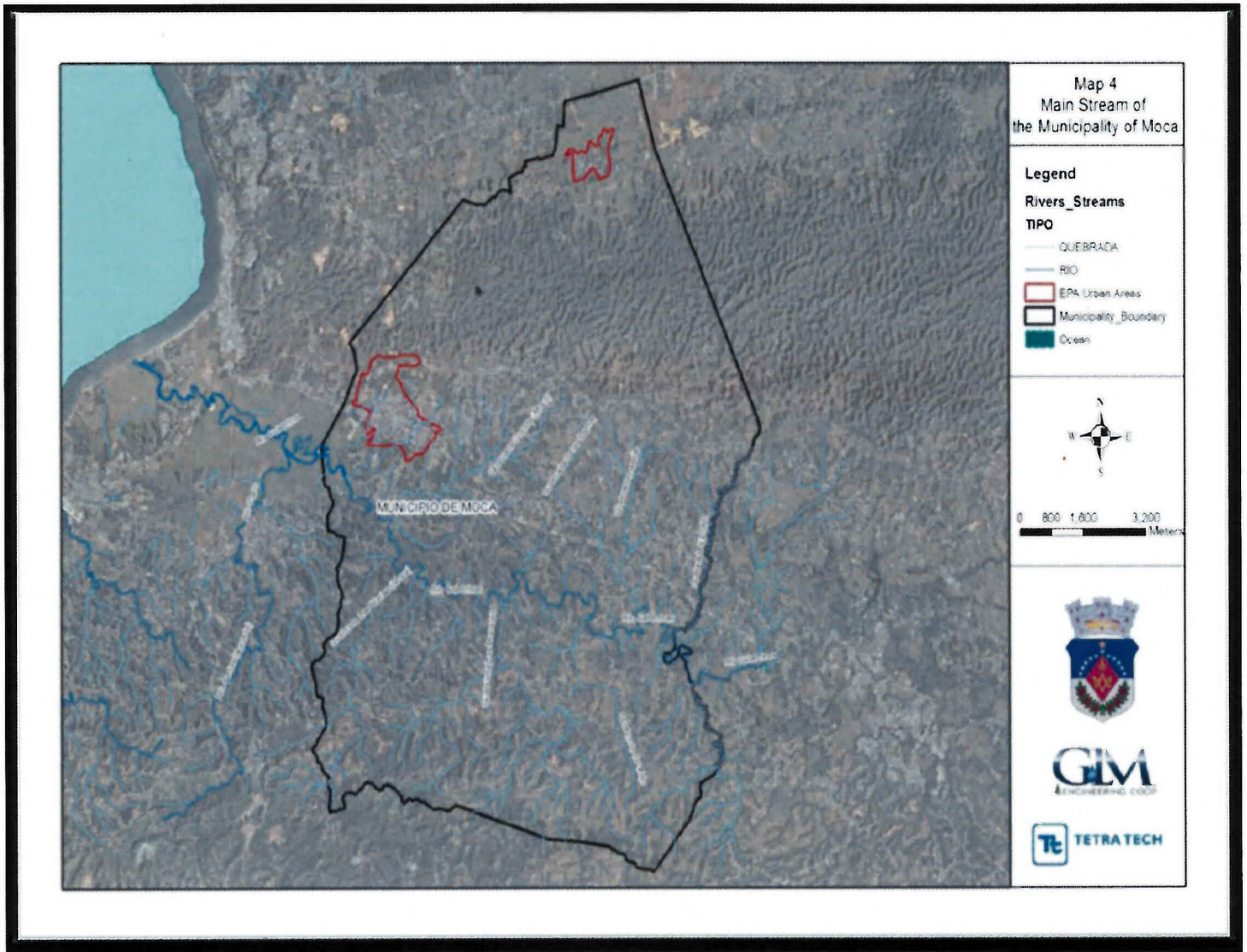
I certify under penalty of law that this document and all attachments were prepared under my direction or supervision in accordance with a system designed to ensure that qualified personnel properly gathered and evaluated the information submitted. Based on my inquiry of the person or persons who manage the system, or those persons directly responsible for gathering the information, the information submitted is, to the best of my knowledge and belief, true, accurate, and complete. I am aware that there are significant penalties for submitting false information, including the possibility of fine and imprisonment for knowing violations.

Signature of Mayor/Elected Official: José Enrique Guiles Santiago
 Print Name of Mayor/Elected Official: JOSE ENRIQUE AVILES SANTIAGO
 Title: MAYOR Date: August 2, 2016

2016 AUG 30 AM 10:01
 RECEIVED

APPENDIX A

MS4's Location Maps.



Note: A CD with a file of the MS4's infrastructure maps of the Municipality of Moca is available in the Planning and Development Department Office.

Do Not Remove
Page Intentionally Left Blank