



December 5, 2016

Eng. Sergio Bosques  
Regional Storm Water Coordinator  
Caribbean Environmental Protection Division  
City View Plaza II – Suite 7000  
#48 Rd. 165 km 1.2  
Guaynabo, PR 00968-8069

2016 DEC 14 AM 11:38  
RECEIVED  
OFFICE OF THE  
MAYOR

**NOTICE OF INTENT-NOI- MUNICIPALITY OF LUQUILLO,  
FOR STORM WATER DISCHARGES FROM SMALL MS4s IN URBANIZED AREAS**

As part of the provisions of the Clean Water Act, Section 402 (p), requires that storm water discharges, associated with municipal separate storm sewer system (MS4s) in urbanized areas, to waters of the US must be authorized by a National Pollutant Discharge Elimination System (NPDES) permit. In order to comply with this requirement, we are submitting our Notice of Intent for the NPDES Permit No. PRR040066.

The updated SWMP document will be modified in the next 6 months as required in Section 1.11 of the 2016 signed permit, and pursuant to Title 40, Part 122.34 Subpart B, or Permit Application and Special NPDES Program Requirements. The Municipality of Luquillo has the intention to comply with the Permit's provisions and EPA requirements. In you need further information, do not hesitate to contact us at the Mayor's Office at (787) 889-2525 or via e-mail at [jardany.diaz@luquillo.gobierno.pr](mailto:jardany.diaz@luquillo.gobierno.pr) or [jardanydiaz@gmail.com](mailto:jardanydiaz@gmail.com).

Regards,

Jesús Márquez Rodríguez  
Mayor

Enclosure

Notice of Intent

MUNICIPAL ADMINISTRATION OF LUQUILLO

NOTICE OF INTENT  
NATIONAL POLLUTANT DISCHARGE ELIMINATION SYSTEM (NPDES) PHASE II,  
REGULATED SMALL MUNICIPAL SEPARATE STORM SEWER SYSTEMS (MS4's)

INDIVIDUAL PERMIT

MUNICIPALITY OF LUQUILLO

EPA REGION 2 PUERTO RICO

PREPARED BY  
ECOSTAHLIA CONSULTORES AMBIENTALES  
SAN JUAN, PUERTO RICO

United States Environmental Protection Agency  
National Pollutant Discharge Elimination System  
Notice of Intent (NOI) for coverage under the Small Municipal Separate  
Storm Sewer System (MS4) General Permit (PRR040000) for Puerto Rico

**Part A. General Information**

1. Name of Municipality or Organization: Municipality Of Luquillo
2. Type: ☐ Federal ☐ State ☒ Municipality ☐ Other: \_\_\_\_\_
3. Existing Permittee: ☒ Yes ☐ No If yes, provide EPA NPDES Permit Number: PR040066
4. Location Address:
  - a. Street: Calle 14 de julio, 1012 Casa Alcaldía
  - b. City: Luquillo State: PR Zip Code: 00773
5. Mailing Address:
  - a. Street: PO Box 1012
  - b. City: Luquillo State: PR Zip Code: 00773
6. Telephone Number: 787-889-2525, ext 228, 229 Fax: \_\_\_\_\_
7. E-mail: wiliris.salgado@luquillo.gobierno.pr, jardanydiaz@gmail.com; jardany.diaz@luquillo.pr.gov
8. Standard Industrial Classification (SIC) Code (see instructions for common codes): 9199
9. Latitude: (use the format provided.) Longitude: (use the format provided.)  
2.2.4.2 Approximate *center of the regulated portion of the MS4*.  
\_\_\_\_° \_\_\_\_' \_\_\_\_" N (degrees, minutes, seconds)      \_\_\_\_° \_\_\_\_' \_\_\_\_" W (degrees, minutes, seconds)  
Or  
18.372624 ° N (degrees decimal)      -65.721842 ° W (degrees decimal)

**Part B. Primary MS4 Program Manager Contact Information**

1. Name: Jardany Díaz Salgado, PPL
2. Position Title: Planning Office and Federal Projects Director
3. Stormwater Management Program (SWMP) Location (web address or physical location):  
Casa Alcaldía P.O. Box 1012 Luquillo, P.R. 00773-1012
4. Mailing Address:
  - a. Street: Oficina de Programas Federales  
PO Box 1012
  - b. City: Luquillo State: PR Zip Code: 00773

5. Telephone Number: 787-427-8356

6. E-mail: jardanydiaz@gmail.com, jardany.diaz@luquillo.gobierno.pr

### Part C. Eligibility Determination

1. Endangered Species Act (ESA) determination complete? ☐ Yes ☒ No
- a. Eligibility Criteria (check all that apply): ☐ A ☐ B ☐ C ☐ D ☒ E ☐ F
2. National Historic Preservation Act (NHPA) determination complete? ☐ Yes ☒ No
- a. Eligibility Criteria (check all that apply): ☐ A ☒ B ☐ C ☐ D

### Part D. Map/Boundaries

1. MS4/Organization Description of regulated boundaries (narrative):

The Municipality of Luquillo is in the northeast part of the Island of Puerto Rico and contains a 26-square mile territory; it is bounded to the north by the Atlantic Ocean; to the south with the Municipalities of Fajardo and Ceiba; to the east with the Municipality of Fajardo and the west with the Municipality of Río Grande. Luquillo is composed of five (5) wards and the downtown (Pueblo) area. These are Juan Martin, Mameyes, Mata de Plátano, Pitahaya, Sabana and Pueblo. Its population was estimated in the 2010 census at 20,068.

Luquillo is watered by the rivers: a) Río Mameyes, born in the Luquillo Forest Reserve at an elevation of 2,390 feet (728 m) above sea level. Its length is approximately 9.7 miles (15.5 Km) from its source to its mouth in the Atlantic Ocean. It crosses the Municipalities of Luquillo and Río Grande, b) Río Sabana, which originates in the Sierra de Luquillo Forest Reserve in the Sabana Ward of Luquillo at an elevation of 1,711 feet (525 m) above sea level. Its length is approximately 7.7 miles (12.3 Km) from its source to its mouth in the Atlantic Ocean, c) Río Juan Martin, born in the Municipality of Fajardo d) Río Cristal, born in the Sierra del Yunque and e) Río Pitahayas, also born in the Sierra del Yunque.

All three rivers mentioned above have tributaries such as Quebrada Buenavista Carrión, Esc. Alejandrina Ríos in Road PR-9990, and Las Pailas to the Sabana River; Las Paulinas, Quebrada Mata de Platano to the Pitahaya River. The Río Sabana and the Río Juan Martin are originated in Luquillo and respectively measure 12,6 km (7,6 miles) and 5,7 km (3,4 miles). The Mameyes is originated in Río Grande, and Río Cristal. The municipality, also, counts with the La Monserrate Beach as well as La Pared Beach. In addition, it conserves 20 hectares of mangroves at its river basin. In the mouth of the Mameyes river, between Río Grande and Luquillo, wetlands almost double the above mentioned amount. All stormwater outflow from the Municipality of Luquillo will be concentrated between its municipal boundaries into the Atlantic Ocean.

The Municipality of Luquillo Storm Water Sewer System (MS4) in the urban areas in general consists of catch basins located within the right of way of municipal and state roads which normally discharge to the rivers within the municipality boundaries and eventually into the Atlantic Ocean. In the rural areas the municipality MS4 system typically consists of interconnected open channel culverts and concrete or PVC pipes which run parallel or under municipal and state roads and usually discharge into the surface water bodies.

It is important to note that the municipal separate storm water sewer system is interconnected with the storm water sewer system operated and maintained by the Puerto Rico Department of Transportation and Public Works and that of the Highway and Transportation Authority.



2. Location Map/Boundaries. A location map must be attached showing the pertinent city, town, wards, or boundaries, the boundaries of the Small MS4, including surface water body(s), and the "urbanized area" (UA) when applicable.

Is map attached? ☒ Yes ☐ No

**Part E. MS4 Infrastructure** (if covered under the 2006 general permit)

1. Estimated Percent of Outfall Map Complete? (Section 4.2.3 of 2006 general permit): 0 %  
Inventory work has been an ongoing process since 2014 using a web base interface tool www.ms4web.com.

a. If 100% of 2006 requirements are not met, enter an estimated date of completion: 12/30/2017

(MM/DD/YYYY)

b. Web address where MS4 map is published:

*If outfall map is unavailable on the internet an electronic or paper copy of the outfall map must be included with NOI submission.*

**Part F. Bylaw/Ordinance Development** (if covered under the 2006 general permit)

1. Illicit Discharge Detection and Elimination (IDDE) authority adopted? ☐ Yes ☒ No

a. Effective Date or Estimated Date of Adoption: 06/30/2017  
(MM/DD/YYYY)

2. Construction/Erosion and Sediment Control authority adopted? ☐ Yes ☒ No

a. Effective Date or Estimated Date of Adoption: 06/30/2017  
(MM/DD/YYYY)

3. Post-Construction Stormwater Management adopted? ☐ Yes ☒ No

a. Effective Date or Estimated Date of Adoption: 06/30/2017  
(MM/DD/YYYY)

**Part G. Receiving Waters**

List the names of all surface waterbody segments to which your MS4 discharges. For each waterbody segment, please report the number of outfalls discharging into it and, if applicable, any impairments. You may attach additional information.

Waterbody Segment that receives flow from the MS4	Number of Outfalls into receiving waterbody segment	Have any monitoring been performed to outfalls? (Yes/No)	List of Pollutant(s) causing impairment (if applicable)	List of TMDL Pollutant (s) (if any)
Río Mameyes (PRER17A) (2014)	Not surveyed yet	No	None	Fecal coliforms
Quebrada Mata de Plátano (PREQ18A) (2016)	Not surveyed yet	No	Low dissolved oxygen, fecal coliforms, surfactants	Fecal coliforms
Río Sabana (PRER19A) (2014)	Not surveyed yet	No	None	Fecal coliforms
Punta La Bandera To Cabezas De San Juan (PREC18) (2016)	Not surveyed yet	No	Low dissolved oxygen, turbidity	None

Punta Miquillo To Punta La Bandera (PREC17) (2016)	Not surveyed yet	No	Low dissolved oxygen, turbidity	None
--	------------------	----	------------------------------------	------

#### Part H. Summary of Stormwater Management Program (SWMP) under the 2006 Small MS4 General Permit

For every measurable goal and associated Best Management Practice (BMP) listed in the adopted program, provide the following information (You may include additional pages):

BMP Description or BMP ID (e.g. MCM-1)	Goal Achieved? (Yes/No)	Continued in next permit cycle? (Yes/No)	Who was the targeted audience? Explain reason for not achieving goal.	Modification(s) to goals or BMP for next permit cycle
<b>MCM-1 Public Education &amp; Outreach</b>				
Stormwater Related Radio Service Announcements	No	No	Public. Lack of funds to develop the task	It will be replaced with Social Media inserts.
Schools Education Program	No	Yes	General public and private sector. Lack of funding to implement the task.	The municipality is expecting to continue with the BMP.
Educational Outreach to Community Homeowners	No	Yes	Public. Lack of funding to implement the task.	The municipality is expecting to continue with the BMP.
Development and Distribution of Educational Material	No	Yes	General public and private sector. Lack of funds to implement the task.	The municipality is expecting to continue with the BMP
Distribution of Stormwater Pamphlets and Flyers	No	Yes	General public and private sector. Lack of funds to implement the task.	This will be part of the new development of educational materials.
<b>MCM-2 Public Involvement &amp; Participation</b>				
Storm Drain Stenciling Program	Yes	Yes	Urban Zone. Used support from the PRDNER Coastal Zone Management Program	The municipality is expecting to continue with the BMP.
Annual Cleanup	Yes	Yes	City wide.	The Municipality will continue with the same target goals.



**Part H. Summary of Stormwater Management Program (SWMP) under the 2006 Small MS4 General Permit**  
For every measurable goal and associated Best Management Practice (BMP) listed in the adopted program, provide the following information (You may include additional pages):

BMP Description or BMP ID (e.g. MCM-1)	Goal Achieved? (Yes/No)	Continued in next permit cycle? (Yes/No)	Who was the targeted audience? Explain reason for not achieving goal.	Modification(s) to goals or BMP for next permit cycle
<b>MCM-3 Illicit Discharge Detection and Elimination Program</b>				
Implement Regulations to Enforce Non-Storm Water Discharges	No	Yes	City wide. Lack of funds to start and complete the proposed task.	The effort will be completed during the new cycle.
Program to Detect Failing Septic Systems	No	No	City wide. Lack of funds. This task present many challenges at this moment.	Not continued. This will be replaced with the IDDE program.
Program to Manage Recreational Sewage Discharges	No	No	Urban Zone. Lack of funds	This will be part of the IDDE program on the new cycle.
Program to Detect and Eliminate Illicit Discharges	No	Yes	Urban Zone. Lack of funds	The Municipality will start the program with the help of a private contractor during the new cycle.
Pest Control Program	No	No	City wide. Lack of available funds	This will be part of the IDDE program on the new cycle.

**Part H. Summary of Stormwater Management Program (SWMP) under the 2006 Small MS4 General Permit**

For every measurable goal and associated Best Management Practice (BMP) listed in the adopted program, provide the following information (You may include additional pages):

BMP Description or BMP ID (e.g. MCM-1)	Goal Achieved? (Yes/No)	Continued in next permit cycle? (Yes/No)	Who was the targeted audience? Explain reason for not achieving goal.	Modification(s) to goals or BMP for next permit cycle
<b>MCM-4 Construction Site Storm Water Runoff Control</b>				
BMP-1 Ordinance or Other Regulatory Mechanism	No	Yes	Local Residents The Municipality needed information on the impact from new regulations on a weak local economy.	For the next cycle the Municipality will complete the approval of the draft ordinance and regulation addressing Stormwater Runoff from Construction Sites.
BMP-2 General Construction Site Waste Controls	Yes	Yes	Local Residents and Contractors. The controls are in place and fully operational	The Municipality will continue with the effort during the new permit cycle.
BMP-3 Information Submitted by the Public	No	Yes	City-wide residents. Lack of funding available.	The Municipality will allocate the necessary funds to complete this
BMP-4 Construction Site Inspection and Enforcement	Yes	Yes	City-wide.	The Municipality will continue funding this task during the new permit cycle.
<b>MCM-5 Post Construction And Re-Development Storm Water Program</b>				
BMP-1 Ordinances or other regulatory mechanism	No	Yes	Local Residents Urban Development Boards The Municipality needed information on the impact from new regulations on a weak local economy.	For the next cycle the Municipality will complete the approval of the draft ordinance and regulation addressing Post-Construction BMPs.
BMP 2 Structural - Stormwater Wetland Program	No	Yes	City-wide The cost associated with the task and the lack of new projects were to implement it, did not allowed to complete the task.	The Municipality will implement the task during the new cycle.
BMP 3 Nonstructural- Develop Green Parking techniques	Yes	No	City-wide	The Municipality will provide the necessary funds to complete this task.



BMP 4 Nonstructural- Develop an education program for developers and public	No	Yes	City-wide, Residents and Developers The Municipal government did not have the necessary funds to complete this task.	The Municipality will allocate the funds to complete this task during the new cycle.
<b>MCM-6 Pollution Prevention and Good Housekeeping</b>				
Employee Training and Education Program	No	Yes	Employees and supervisors from Municipal Public Works. Employees received trainings twice a year.	The trainings will be given with the help of a private contractor during the new cycle.
Vehicle Maintenance Program	Yes	Yes	Municipal fleet. This is part of the daily municipal tasks.	This will be part of the Municipal operations SOP's
Vehicle Washing Program	Yes	Yes	Municipal fleet. This is part of the daily municipal tasks.	This will continue to be part of the Municipal operations SOP's
Parking Lot and Street Cleaning Program	Yes	Yes	Urban Zone. This is part of the daily municipal tasks.	This will be part of the Municipal operations SOP's
Storm Drain System Cleaning Program	Yes	Yes	City wide. This is part of the daily municipal tasks.	This will be part of the Municipal operations SOP's
Spill Response and Prevention Program	Yes	Yes	Municipal feet. This is part of the daily municipal tasks.	This will be part of the Municipal operations SOP's
Used Oil Recycling Program	Yes	Yes	Municipal feet. This is part of the daily municipal tasks.	The municipality will continue with the efforts under the Cease the Grease Program.

**Part I. 2016 Stormwater Management Program (SWMP) Summary**

Public Education and Outreach (See Section 2.4.2 for detailed information of required BMPs):

<b>BMP Description or BMP ID (e.g. MCM-1)</b>	<b>Education Topic (Identify the issue your BMP is educating the public about.)</b>	<b>Outreach Method (Describe the method used to convey this topic, e.g. mailing, events, school, etc.)</b>	<b>Measurable Goal (What is the end result of this program? What indicator will determine the goal has been met? (e.g., number mailing sent, people at event, class participation, etc.)</b>
BMP-1 Storm Drain Stenciling Program	Non-Point Sources and Illegal Discharges	Storm drains stenciling to educate the general public not to pollute the stormwater system.	Number of storm water inlets painted and volunteers participating. The target is to have a minimum of 20 drains marked on yearly basis.
BMP-2 Annual Cleanup	Non-Point Sources	Volunteer and residents' participation	Number of tons of debris and recyclables collected during the cleanup events. The target is to collect 1 ton per year but to reduce the amount based in the success of the program.
BMP-3 Public Education Program	Illegal Discharges, Non-Point Sources and Erosion Control	Public Meetings, School Lectures	Number of residents attending the events. To target 200 students every year city-wide.
BMP-5 Social Media Education Campaign	Illegal Discharges, Non-Point Sources and Erosion Control	Posting of educational clips and messages in Facebook, Twitter, Instagram and Snapchat	Number of messages distributed, shared and viewed on a weekly basis.



**Part I. 2016 Stormwater Management Program (SWMP) Summary (continued)**

Public Involvement and Participation (See Section 2.4.3 for detailed information of required BMPs):

<b>BMP Description or BMP ID (e.g. MCM-1)</b>	<b>Program Description (Describe the program and how it will inspire public participation, e.g. special events, volunteer sampling and monitoring efforts, household hazardous waste recycling, etc.)</b>	<b>Measurable Goal (What is the end result of this program? What indicator will determine the goal has been met? (e.g., participation, amount of sampling performed, waste collected, etc.)</b>
BMP-1 Implement Regulations to Enforce Non-Storm Discharges	The Municipality will start train its employees and implement the approved ordinance throughout its territory.	It is expected to start in the first semester of 2017. Reduction in illicit discharges and connections.
BMP-2 Meet with Local Community Groups and Organizations to Involve them in Stormwater Efforts	The Municipality propose the use of public meetings through the community as a mean to request their involvement in the efforts coordinated by the administration.	The number of volunteers and the total number of communities covered during the public meetings.
BMP-3 Develop and conduct periodical focus groups to discuss the current issues related to pollution from storm-waters	The Municipality propose the use of focus groups through the community as a mean to request their involvement in the efforts coordinated by the administration.	The number of volunteers participating during the focus groups and the number of issues identified and fixed.
BMP-4 Conduct Public Hearings to address Stormwater issues	The Municipality propose conducting a yearly Public Hearing to address the most pressing issues related to pollution from Stormwater runoff.	The number of participants and issues identified and resolved as a result from the Public Hearing.
BMP-5 Adopt a Stream Program	The Municipality propose the development of an adoption program with local partners aimed to target one of the water bodies located within the urban area of Luquillo.	The number of streams or meters adopted and the improvement of the surface water quality of the streams.

**Part I. 2016 Stormwater Management Program (SWMP) Summary (continued)**

Illicit Discharge Detection and Elimination (See Section 2.4.4 for detailed information of required BMPs):

BMP Description or BMP ID (e.g. MCM-1)	Program Description (Describe the program and how it will identify and remove illicit connections from the MS4, e.g. new regulations, investigation practices, removal of illicit connections, etc.)	Measurable Goal (What is the end result of this program? What indicator will determine the goal has been met? (e.g., adoption of bylaws/ordinances, amount of investigation performed, identified and removed illicit connections, etc.)
BMP-1 Storm Sewer System Map	Then Municipality is required to develop an inventory of all municipal stormwater infrastructure.	Create a map inventory of all the stormwater infrastructure in the urban area of the Municipality.
BMP-2 Prepare and implement an ordinance targeting illegal discharges at the storm sewer system	The Municipality propose to present a local ordinance and the necessary regulation targeting illegal discharges into the storm sewer system.	The number of discharges identified and corrected on a yearly basis.
BMP-3 MS4Web Permit Manager Tool	Luquillo propose the use of the MS4Web Permit Manager as a mean to provide local residents and municipal managers with an internet based tool to access data on illegal discharges and all storm water outfalls in the city and how to address the issue of illegal discharges.	Number of residents and local managers using the Internet-based tool.
BMP-4 Used Oil Recycling Program	The Municipality of Luquillo will implement the Cease the Grease Program as part of the city-wide effort to reduce the illegal discharge of used cooking oil in the storm sewer system and surface water bodies.	The number of gallons of used cooking oil recycled city-wide
BMP-5 Basic Surface Water Quality Monitoring Project	A basic surface water quality monitoring program will be established in a selected stream using parameters like pH, Temperature and Fecal Coliforms	Data from streams will be compared to data obtained on a regular basis by the PR Environmental Quality Board
BMP-6 Hotline	Illegal Discharges and Non-Point Sources. Thru the general outreach activities, the Municipality encourages the use of the hotline to address the problems.	Number of calls received related to stormwater issues.



**Part I. 2016 Stormwater Management Program (SWMP) Summary (continued)**

Construction Site Stormwater Runoff Control (See Section 2.4.5 for detailed information of required BMPs):

<b>BMP Description or BMP ID (e.g. MCM-1)</b>	<b>Program Description (Describe the program and how it will help control stormwater runoff at construction sites, e.g. new regulations, construction practices, inspection protocols, etc.)</b>	<b>Measurable Goal (What is the end result of this program? What indicator will determine the goal has been met? (e.g., adoption of bylaws/ordinances, amount of inspections performed and sites actively regulated, etc.)</b>
BMP-1 Ordinance to control runoff from construction sites	The Municipality will prepare, approve and adopt an ordinance specifically targeting runoff from construction sites impacting the stormwater sewer system covered by the permit.	The number of interventions and sites corrected. 100% inspection rate city-wide.
BMP-2 Construction Sites Annual Inventory	Then Municipality is required to develop an inventory of all public and private construction projects. The local government propose the use of the MS4Web Permit Manager to create and maintain the inventory identifying all construction sites. The tool helps the local managers to update the information as needed. All documents associated with the projects will be added in PDF format during the inspections and will be ready available to the inspectors.	The number of projects identified and certified ion compliance with the permit.
BMP-3 Development of SOPs for Construction Permits.	The Municipality propose the development of a Construction SOP aimed to provide developers with new means to address regulation requirement and for inspectors to identify deficiencies during inspections.	Number of Projects city-wide visited and brought into compliance with local ordinance and USEPA regulations.
BMP-4 BMPs during construction Poster	The Municipality will prepare and distribute a brochure aimed to contractors and construction projects with BMPs specifically design to reduce impacts to the stormwater runoff from construction activities.	A 100% coverage of active and permitted construction projects city-wide.

**Part I. 2016 Stormwater Management Program (SWMP) Summary (continued)**

Post-Construction Stormwater Management in New Development and Redevelopment (See Section 2.4.6 for detailed information of required BMPs):

<b>BMP Description or BMP ID (e.g. MCM-1)</b>	<b>Program Description (Describe the program and how it will control stormwater runoff from properties after they are developed, e.g. new regulations, practices, or resources for contractors to use Low Impact Development (LID), etc.)</b>	<b>Measurable Goal (What is the end result of this program? What indicator will determine the goal has been met? (e.g., adoption of bylaws/ordinances, amount of implemented practices, development of capacity building resources, etc.)</b>
BMP-1 Ordinance to control runoff pollution from post-construction projects	The Municipality will prepare, approve and adopt an ordinance specifically targeting runoff from post-construction projects impacting the stormwater sewer system covered by the permit.	The number of interventions and sites corrected. 100% inspection rate city-wide.
BMP-2 Standard Operating Procedures for Post-Construction Projects	The Municipality of Luquillo propose to develop procedures to avoid runoff impacts to nearby surface waterbodies from stormwater controls located on completed construction projects. This will include impacts from retention ponds or non-covered areas prone to high rates of sedimentation.	Number of projects visited and certified in compliance with local ordinances and USEPA regulations.
BMP-3 Brochures	A series of brochures will be developed to be distributed among residents and managers of new and old housing and apartment projects city-wide aimed to educate them in good practices to avoid impacts to the existing stormwater infrastructure.	To distribute no less than 100 copies on a yearly basis.



**Part I. 2016 Stormwater Management Program (SWMP) Summary (continued)**

Good Housekeeping and Pollution Prevention in Municipal Operations (See Section 2.4.7 for detailed information of required BMPs):

<b>BMP Description or BMP ID (e.g. MCM-1)</b>	<b>Program Description (Describe the program and how it will mitigate stormwater runoff at municipal properties or through municipal activities, e.g. installation of structural stormwater controls on the municipal properties, new practices to reduce pollutant exposure to rain events, runoff management, trainings, etc.)</b>	<b>Measurable Goal (What is the end result of this program? What indicator will determine the goal has been met? (e.g., structural BMPs installed, SOPs developed and implemented, etc.)</b>
BMP-1 Trainings for Municipal Employees	The Municipality will provide trainings on BMPs for mechanics, green-areas workers, painters, electricians, and clerical employees on how to address simple issues identified in the daily tasks of Municipal Operations. The trainings will cover oil, paint and fuel spills, emergency response, good housekeeping, material storage, and record keeping.	The Municipality will provide their employees with two (2) workshops/trainings every year addressing BMPs and their responsibility under the USEPA-NPDES Permit.
BMP-2 SOPs for Municipal Operations	The Municipality will develop and implement the required Standard Operation Procedures for all the operations and maintenance activities conducted daily at Municipal Public Works. The SOPs will cover all activities that may have an impact on the NPDES-MS4 permit.	Number of inspections completed and certified in compliance with local ordinances and USEPA regulations.
BMP-3 SOPs for Municipal Facilities	The Municipality will develop and implement the required SOP for the operation of municipal facilities including parks and open space maintenance, sidewalks, streets and roads; and auto yards.	Number of inspections completed and certified in compliance with local ordinances and USEPA regulations.

**Part J. Application Certification and Signature**

I certify under penalty of law that this document and all attachments were prepared under my direction or supervision in accordance with a system designed to assure that qualified personnel properly gathered and evaluated the information submitted. Based on my inquiry of the person or persons who manage the system, or those persons directly responsible for gathering the information, the information submitted is, to the best of my knowledge and belief, true, accurate, and complete. I am aware that there are significant penalties for submitting false information, including the possibility of fine and imprisonment for knowing violations.

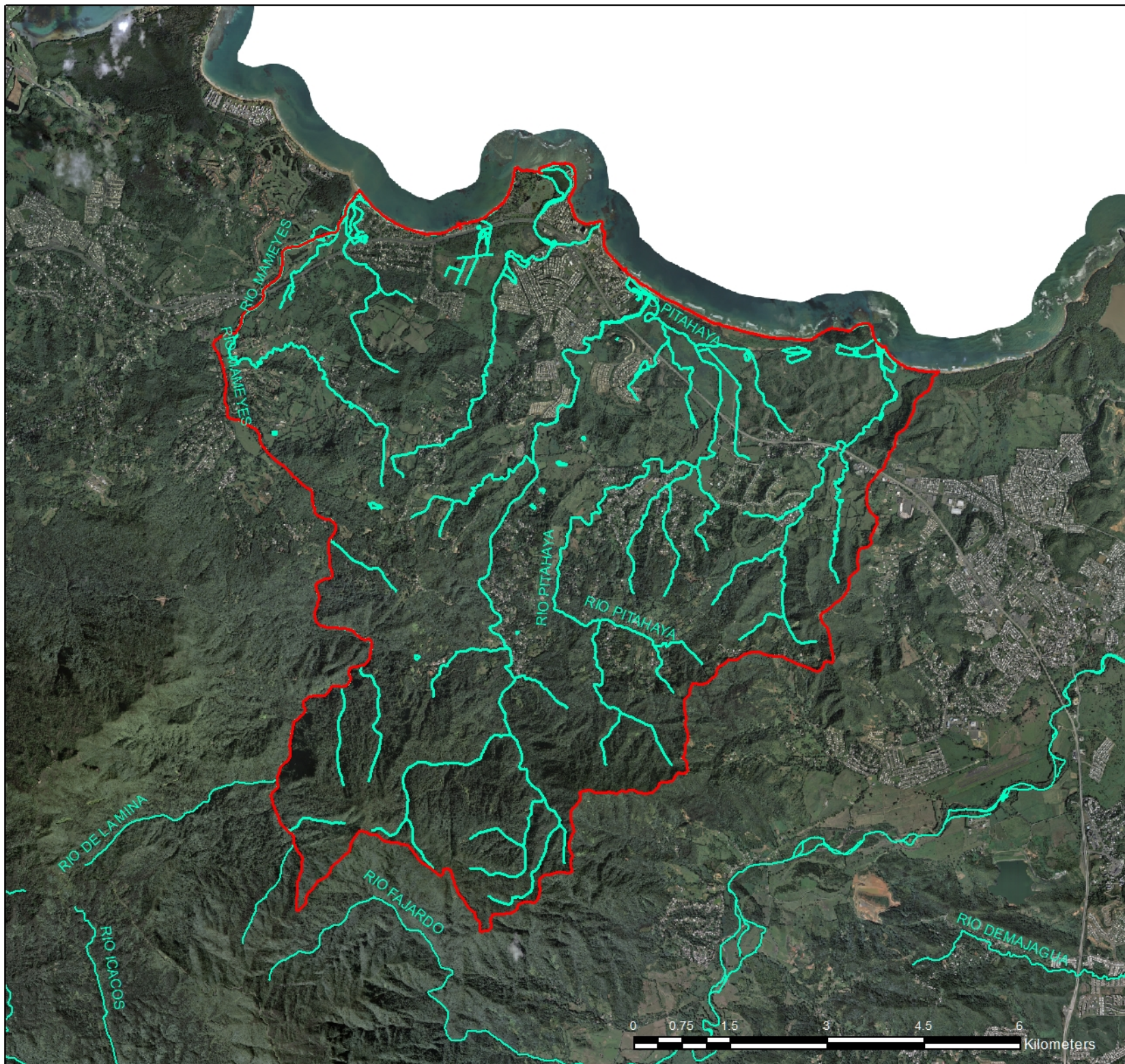
Signature of Mayor/Elected Official: \_\_\_\_\_



Print Name of Mayor/Elected Official: Jesús Gerardo Márquez Rodríguez

Title: \_\_\_\_\_ Mayor \_\_\_\_\_ Date: \_\_\_\_\_ December 5, 2016 \_\_\_\_\_





## Luquillo's Main Rivers

### Legend

-  Luquillo
-  Main Rivers
-  Municipality

Projection: Lambert  
Coordinate System: NAD83 PR StatePlane



Source: JP  
1:80,000



Puerto Rico



2016





Luquillo, PR

Census  
Urbanized Area

Projection: Lambert  
Coordinate System: NAD83 PR StatePlane



Source: JP, Census

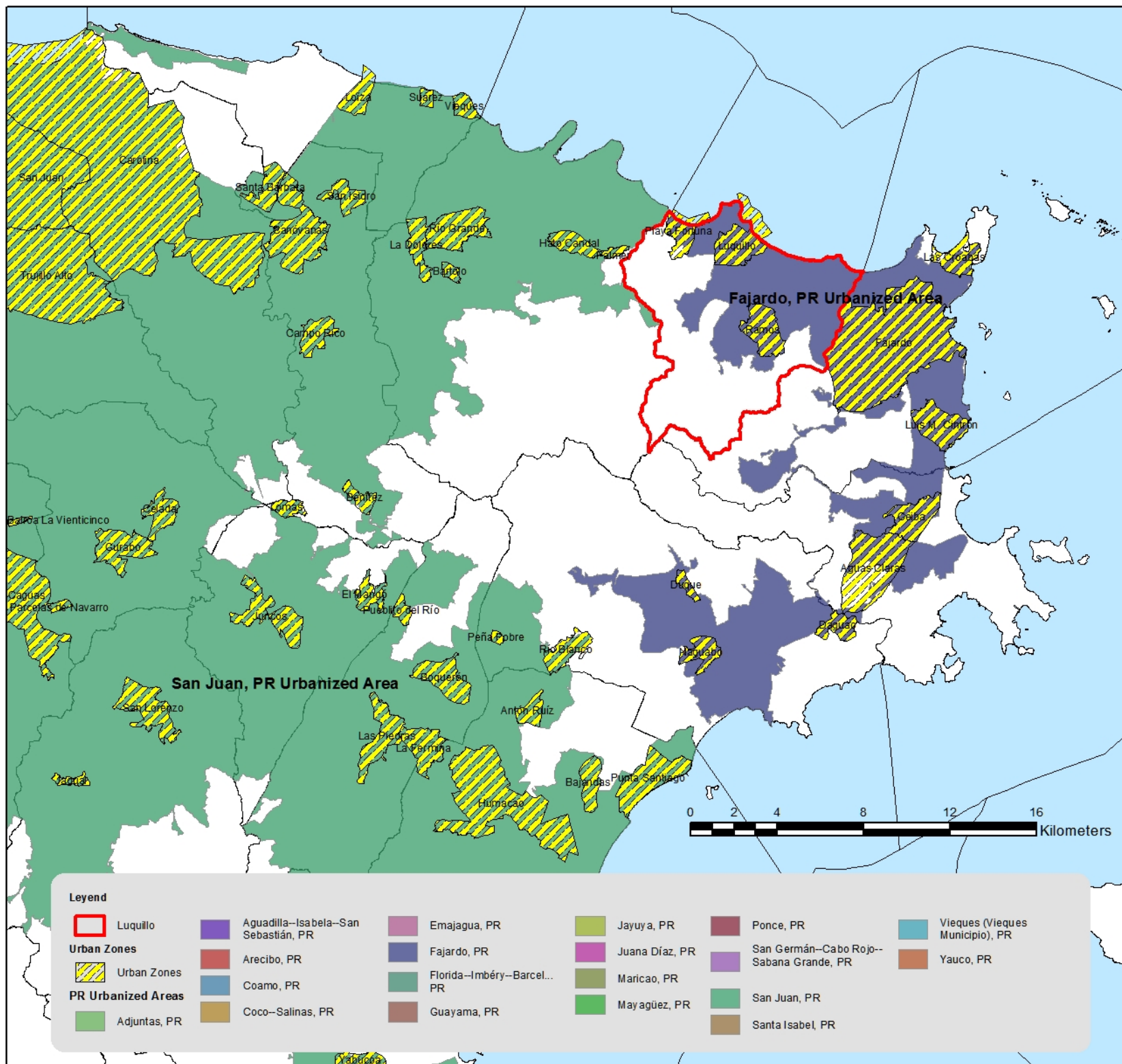
1:239,067



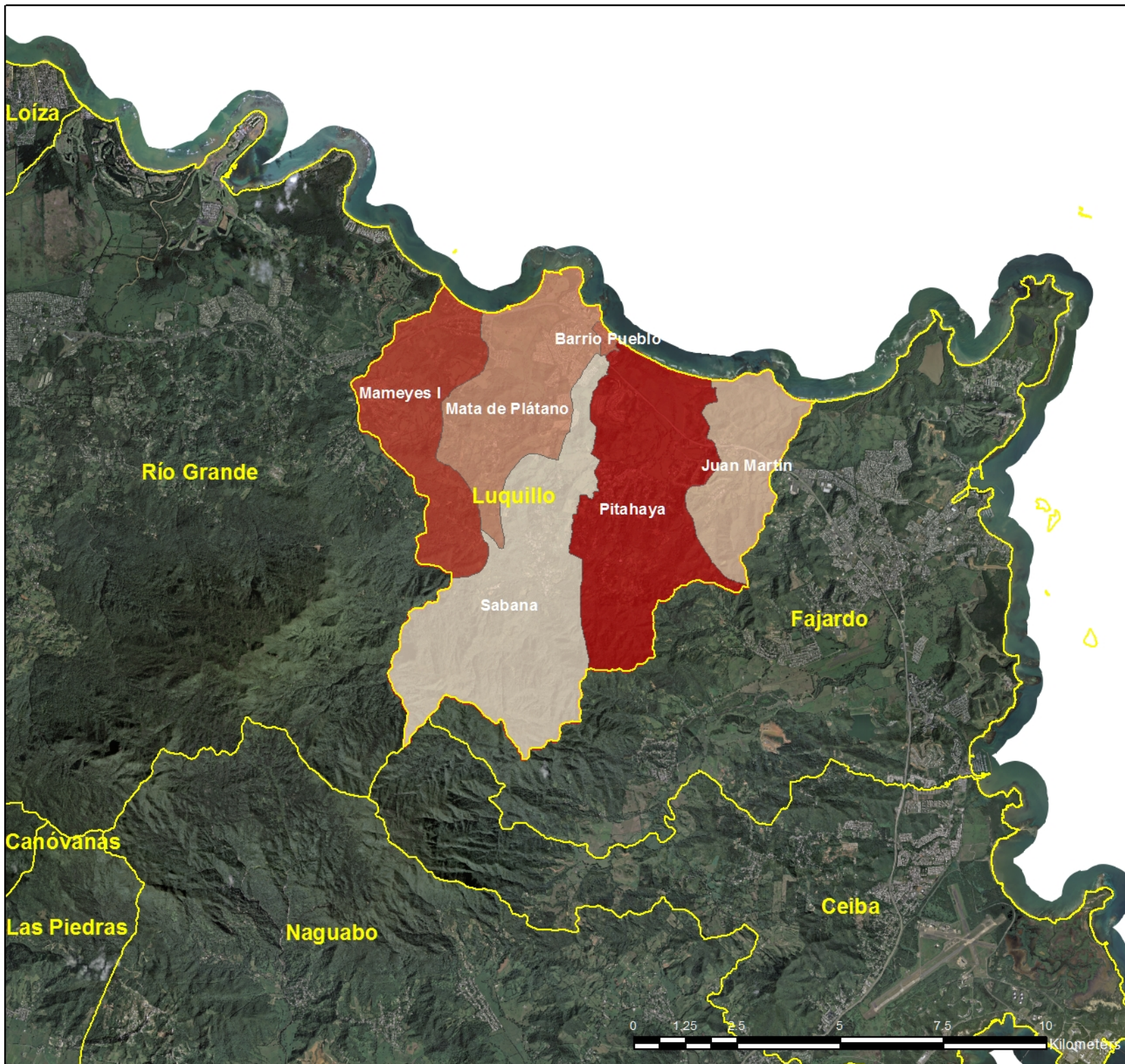
Puerto Rico



2016







## Luquillo's Wards and City Limits

### Legend

-  Municipality
-  Luquillo

Projection: Lambert  
Coordinate System: NAD83 PR StatePlane



Source: JP  
1:125,000



Puerto Rico



2016