
NOTICE OF INTENT
NATIONAL POLLUTANT DISCHARGE ELIMINATION SYSTEM GENERAL PERMIT
PRR040000/PRR04000F
SEPARATE STORM SEWER SYSTEMS 2016

Submitted By:



MUNICIPALITY OF LARES

PO Box 395
Lares, PR 00669

RECEIVED
SEP 28 2016

JS

Submitted To:

U.S. ENVIRONMENTAL PROTECTION AGENCY – REGION II
CARIBBEAN ENVIRONMENTAL PROTECTION DIVISION
CITY VIEW PLAZA, SUITE 7000
#48 165 RD KM 1.2
GUAYNABO, PUERTO RICO 00968

28 September 2016



Table of Content

1.0	NPDES (NOTICE OF INTENT) PERMIT APPLICATION	2
1.1	BACKGROUND	2
1.2	2016 MS4 GENERAL PERMIT	2
1.3	NOTICE OF INTENT FORM FOR MS4 IN PUERTO RICO (APPENDIX F)	3
1.3.1	Part A. General Information	3
1.3.2	Part B. Primary MS4 Program Manager Contact Information.....	3
1.3.3	Part C. Eligibility Determination	4
1.3.4	Part D. Map/Boundaries	4
1.3.5	Part E. MS4 Infrastructure	5
1.3.6	Part F. Bylaw/Ordinance Development.....	5
1.3.7	Part G. Receiving Waters	5
1.3.8	Part H. Summary of Stormwater Management Program (SWMP) under the 2006 Small MS4 General Permit	6
1.3.9	Part I. 2016 Stormwater Management Program (SWMP) Summary	13
1.3.9.1	Public Education and Outreach	13
1.3.9.2	Public Involvement	14
1.3.9.3	Illicit Discharge Detection and Elimination	15
1.3.9.4	Construction Site Stormwater Runoff Control	16
1.3.9.5	Post-Construction Stormwater Management in New Development and Redevelopment.....	17
1.3.9.6	Good Housekeeping and Pollution Prevention in Municipal Operations	20
1.3.10	Part J. Application Certification and Signature	25

APPENDICES

APPENDIX A – MAPS

-LOCATION/BOUNDARIES MAP

-OUTFALL MAP

APPENDIX B – ELIGIBILITY DETERMINATION

-U.S. FISH AND WILDLIFE SERVICE ENDANGERED SPECIES ACT ELIGIBILITY DETERMINATION

-NATIONAL HISTORIC PRESERVATION ACT ELIGIBILITY DETERMINATION CRITERIA



1.0 NPDES (NOTICE OF INTENT) PERMIT APPLICATION

1.1 BACKGROUND

In 1972, Congress amended the Clean Water Act (CWA) to prohibit the discharge of any pollutant to waters of the United States from point sources unless the discharge is authorized by a National Pollutant Discharge Elimination System (NPDES) permit. Initial efforts under the NPDES program focused on reducing pollutants in discharges of industrial process wastewater and municipal sewage. As pollution control measures have been implemented, it has become evident that diffuse sources or nonpoint sources are also contributors of water quality degradation. In 1990, the US Environmental Protection Agency (EPA) promulgated rules establishing Phase I of the NPDES storm water program. The Phase I program for MS4s requires operators of “medium” and “large” MS4s, that is, those that generally serve populations of 100,000 or greater, to implement a storm water management program as a means to control polluted discharges from these MS4s. EPA published the Storm Water Phase II Rule on December 9, 1999 which covers all small MS4s located in “urbanized areas” as defined by the Bureau of the Census.

As outlined in these regulations the Autonomous Municipality of Lares is required to submit an application for permit coverage as well as a Storm Water Management Plan (SWMP). On June 30, 2010 the Municipality submitted a Notice of Intent (NOI) and on November 24, 2010 were issued coverage under Permit Number PRR040082. The Municipality developed and submitted a Stormwater Management Plan on June 2010, and is currently on Year 6 of its implementation.

1.2 2016 MS4 GENERAL PERMIT

The General Permit for Stormwater Discharges from Small Municipal Separate Storm Sewer Systems in the Commonwealth of Puerto Rico, Permit Number PRRR040000 effective July 1, 2016 requires permittees to submit NOI within 90 days of the effective date of the permit.

“Operators of Small MS4s seeking authorization to discharge under the terms and conditions of this permit shall submit a complete and accurate NOI that contains the information identified in Appendix F. This includes operators of small MS4s that were previously authorized under the November 6, 2006 Small MS4 General Permit.”



1.3 NOTICE OF INTENT FORM FOR MS4 IN PUERTO RICO (APPENDIX F)

1.3.1 PART A. GENERAL INFORMATION

1. Name of Municipality or Organization: **Municipality of Lares**

2. Type: Federal State ☒ Municipality Other:

3. Existing Permittee: ☒ Yes No

If yes, provide EPA NPDES Permit Number: **PRR040082**

4. Location Address:

a. Street: **Casa Alcaldía, Calle Pedro Albizu Campos**

b. City: **Lares** State: **PR** Zip Code: **00669**

5. Mailing Address:

a. Street: **P.O. Box 395**

b. City: **Lares** State: **PR** Zip Code: **00669**

6. Telephone Number: **(787) 897-2300** Fax: **(787) 897-7510**

7. E-mail: **ommeadlares@yahoo.com**

8. Standard Industrial Classification (SIC) Code: **9199**

9. Latitude: **18.276746_N** Longitude: **-66.868089 W**

2.2.4.2 *Approximate center of the regulated portion of the MS4.*

1.3.2 PART B. PRIMARY MS4 PROGRAM MANAGER CONTACT INFORMATION

1. Name: **Jose Cardona**

2. Position Title: **Municipal Emergency Mangement Director**

3. Stormwater Management Program (SWMP) Location (web address or physical location): **Casa Alcaldía, Calle Pedro Albizu Campos Municipality of Lares**

4. Mailing Address:

a. Street: **P.O. Box 395**

b. City: **Lares** State: **PR** Zip Code: **00669**

5. Telephone Number: **(787) 897-2300**

6. E-mail: **ommeadlares@yahoo.com**



1.3.3 PART C. ELIGIBILITY DETERMINATION

1. Endangered Species Act (ESA) determination complete?
✓ Yes No
a. Eligibility Criteria (check all that apply): A B C D ✓ E
2. National Historic Preservation Act (NHPA) determination complete?
✓ Yes No
a. Eligibility Criteria (check all that apply): ✓ A B C D

1.3.4 PART D. MAP/BOUNDARIES

1. MS4/Organization Description of regulated boundaries (narrative):

The Autonomous Municipality of Lares has a territorial extension of 62.23 square kilometers and a population of 30,219 inhabitants¹, according to the 2010 Census. Lares is located in the Interior Mountain Region at 1,200 meters above sea level and its territory is mainly mountainous. It is bounded to the North with the municipality of Camuy, to the East with the municipalities of Hatillo, Utuado and Adjuntas, to the South with the municipalities of Yauco and Maricao, and to the West with the municipalities of San Sebastian and Las Marías. The municipality is composed of 12 wards: Bartolo, Piletas, Callejones, Lares Pueblo, Pezuela, Piletas, Pueblo, Lares, Buenos Aires, Espino, La Torre and Marisol. The main rivers in Lares are: Río Grande de Añasco, Río Culebrinas, Río Camuy and Río Guajataca.

The Autonomous Municipality of Lares operates a municipal separate storm water sewer system located in Lares, Puerto Rico which includes the old urban area and rural areas within the municipality. The MS4 in the urban areas in general consist of a series of catch basins, typically located within the right-of-way of municipal and state Commonwealth roads, interconnected by underground concrete or PVC pipes which normally discharge to the Río Guajataca or its tributaries. In the rural areas the Municipal MS4s system typically consists of a series of interconnected open channel culverts, which run parallel to municipal and state Commonwealth roads, and usually discharge to a surface water body. Interconnected to the Municipal MS4s system are the storm water sewer systems owned and operated by the Puerto Rico Department of Transportation and Public Works. Also, interconnected to the Municipal MS4s system are the discharges from NPDES (Stormwater) permitted facilities.

2. Location Map/Boundaries. A location map must be attached showing the pertinent city, town, wards, or boundaries, the boundaries of the Small MS4, including

¹ Based Census 2010 Population, Housing Units, Area, and Density Summary, Lares, Puerto Rico, [Http://www.censo.gobierno.pr](http://www.censo.gobierno.pr)



surface water body(s), and the "urbanized area" (UA) when applicable.

Is map attached? ☒ Yes ☐ No

1.3.5 PART E. MS4 INFRASTRUCTURE

1. Estimated Percent of Outfall Map Complete? (*Part 4.2.3 of 2006 general permit*):
75% outfall map complete

a. If 100% of 2006 requirements are not met, enter an estimated date of completion:
June 2017

b. Web address where MS4 map is published: **Included in Appendix A- pending to be published in webpage once Municipal webpage is developed**

1.3.6 PART F. BYLAW/ORDINANCE DEVELOPMENT

1. Illicit Discharge Detection and Elimination (IDDE) authority adopted?
☒ Yes ☐ No

a. Effective Date or Estimated Date of Adoption: **December 19, 2013**

2. Construction/Erosion and Sediment Control authority adopted?
☒ Yes ☐ No

a. Effective Date or Estimated Date of Adoption: **December 19, 2013**

3. Post-Construction Stormwater Management adopted?
Yes ☒ No

a. Effective Date or Estimated Date of Adoption: **June 2017**

1.3.7 PART G. RECEIVING WATERS

Waterbody Segment that receives flow from the MS4	Number of Outfalls into receiving waterbody segment	Have any monitoring been performed to outfalls? (Yes/No)	List of Pollutant(s) causing impairment (if applicable)	List of TMDL Pollutant (s) (if any)
Quebrada Anon	6	no	none	none
Río Guajataca	16	no	Fecal Coliform	Fecal Coliform

**1.3.8 PART H. SUMMARY OF STORMWATER MANAGEMENT PROGRAM (SWMP) UNDER THE 2006 SMALL MS4 GENERAL PERMIT**

BMP Description	Goal Achieved? (Yes/No)	Continued in next permit cycle? (Yes/No)	Who was the targeted audience? Explain reason for not achieving goal.	Modification to goals or BMP for next permit cycle
MCM1: PUBLIC EDUCATION				
Storm Water Related Public Service Announcements	No	Yes	General Public Goal was not reached due to lack of personnel and resources.	No
Development and Distribution of Storm Water Related Materials	Yes	Yes	General Public	No
Storm Water Web Page	No	Yes	General Public Goal was not reached due to lack of personnel and resources.	No
Storm Water Pamphlets, Booklets and Flyers	Yes	Yes	General Public	No
MCM2: PUBLIC INVOLVEMENT				
Stormdrain Stenciling Program	No	No	General Public and School Aged Children Goal was not reached due to lack of personnel and resources.	This BMP will be eliminated, Municipality will continue to support local organizations and initiatives such as the Annual Beach Cleanup hosted by Scuba Dogs.



BMP Description	Goal Achieved? (Yes/No)	Continued in next permit cycle? (Yes/No)	Who was the targeted audience? Explain reason for not achieving goal.	Modification to goals or BMP for next permit cycle
Annual Cleanup	Yes	Yes	General Public	No
Support of Local Organizations	Yes	Yes	General Public	No
Community Hotline	No	Yes	General Public Goal was not reached due to lack of personnel and resources.	No
MCM3: ILLICIT DISCHARGE DETECTION				
Storm Sewer System Map	Yes	Yes	General Public	Map shall include elements required in the 2016 GP Sec. 2.4.4.6
Implement Regulations to Enforce Non-storm water Discharges	Yes	Yes	General Public	No
Educational Outreach	Yes	Yes	General Public	No
Program to Detect, Identify and Eliminate Illegal Discharges	No	Yes	General Public No illicit discharges have been detected so far.	The Municipality will Develop an IDDE Program according to requirements in 2016 GP sec. 2.4.4.8
Program to Detect, Identify and Eliminate Illegal Solid Waste Dumping	Yes	Yes	General Public	The Municipality will Develop an IDDE Program according to requirements in 2016 GP sec. 2.4.4.8
Program to Detect,	No		General Public	The Municipality will



BMP Description	Goal Achieved? (Yes/No)	Continued in next permit cycle? (Yes/No)	Who was the targeted audience? Explain reason for not achieving goal.	Modification to goals or BMP for next permit cycle
Identify and Eliminate Waste Water Connections to the Storm Drain System			Progress has been made toward achieving this BMP but no illicit discharges have been detected so far.	Develop an IDDE Program according to requirements in 2016 GP sec. 2.4.4.8
Program to Detect and Eliminate Sanitary Overflows	No	Yes	General Public Progress has been made toward achieving this BMP but SOP developed for reporting and documenting SSOs has not been fully implemented.	Documentation of SSOs will be according to requirements of 2016 GP.
Program to Detect and Eliminate Failing Septic Systems	No	No	General Public The Municipality does not offer the service of emptying septic systems therefore is not aware of failing septic systems.	The Municipality will focus on fixing any problems with their own septic systems and those reported through environmental complaints as part of their IDDE Program.
MCM 4: CONSTRUCTION				
Ordinance or Other Regulatory Mechanism	Yes	Yes	Designers Developers Contractors Inspectors Enforcement personnel	No
General Construction Site Waste Controls	No	Yes	Designers Developers Contractors	No



BMP Description	Goal Achieved? (Yes/No)	Continued in next permit cycle? (Yes/No)	Who was the targeted audience? Explain reason for not achieving goal.	Modification to goals or BMP for next permit cycle
			Inspectors Enforcement personnel Goal was not reached due to lack of Planning Department and resources.	
Information Submitted by the Public	Yes	Yes	Designers Developers Contractors Inspectors Enforcement personnel Goal was not reached due to lack of Planning Department and resources.	No
Construction Site Inspection and Enforcement	Yes	Yes	Designers Developers Contractors Inspectors Enforcement personnel Goal was not reached due to lack of Planning Department and resources.	No
MCM 5: POST-CONSTRUCTION				
Ordinance or Other Regulatory Mechanism	No		Designers Developers Contractors	



BMP Description	Goal Achieved? (Yes/No)	Continued in next permit cycle? (Yes/No)	Who was the targeted audience? Explain reason for not achieving goal.	Modification to goals or BMP for next permit cycle
			Inspectors Enforcement personnel The Municipality has not achieved its goal because it is evaluating mechanisms to implement this BMP.	
Structural Practices	No		Designers Developers Contractors Inspectors Enforcement personnel Goal was not reached due to lack of Planning Department and resources.	
Nonstructural Practices	No		Designers Developers Contractors Inspectors Enforcement personnel Goal was not reached due to lack of Planning Department and resources.	
Inspection of Operation and Maintenance Plans	No		Designers Developers Contractors Inspectors	



BMP Description	Goal Achieved? (Yes/No)	Continued in next permit cycle? (Yes/No)	Who was the targeted audience? Explain reason for not achieving goal.	Modification to goals or BMP for next permit cycle
			Enforcement personnel Goal was not reached due to lack of Planning Department and resources.	
MCM 6: POLLUTION PREVENTION (GOOD HOUSEKEEPING FOR MUNICIPAL OPERATIONS)				
Source Control-Pet Waste Collection	No	Yes	General Public Policy development was evaluated but found to be not feasible, efforts will be focused on education.	This BMPs goal will be to educate the community regarding petwaste impacts on water quality.
Source Control Vehicle Maintanance	Yes	Yes	Businesses Municipal employee Enforcement personnel	No
Source Control-Vehicle Washing	Yes	Yes	Businesses Municipal employee Enforcement personnel	No
Source Control-Pavement Cleaning Practices	No	No	Businesses Municipal employee Enforcement personnel Progress was made toward implementing this BMP, municipal employees received training regarding landscaping BMPs, but home owners and	This BMP will be eliminated however educational material will continue to be available through the Municipal Web page.



BMP Description	Goal Achieved? (Yes/No)	Continued in next permit cycle? (Yes/No)	Who was the targeted audience? Explain reason for not achieving goal.	Modification to goals or BMP for next permit cycle
			business did not assist, therefore educational material will continue to be available through the municipal webpage.	
Source Control-Roadway and Bridge Repair	No	No	Businesses Municipal employee Enforcement personnel	This BMP will be eliminated however educational material will continue to be available through the Municipal Web page.
Source Control-Inspection and Cleaning of Storm Drain System	No	Yes	Businesses Municipal employee Enforcement personnel Procedures were developed however they are not being fully implemented and work is not being documented.	No
Materials Management-Alternative Products	Yes	Yes	Businesses Municipal employee Enforcement personnel Procedures were developed however they are not being fully implemented and work is not being documented.	No
Materials Management-Storage of	Yes	Yes	Businesses Municipal employee Enforcement personnel	No



BMP Description	Goal Achieved? (Yes/No)	Continued in next permit cycle? (Yes/No)	Who was the targeted audience? Explain reason for not achieving goal.	Modification to goals or BMP for next permit cycle
Hazardous materials				
Materials Management- Procedures for spill response and prevention	Yes	Yes	Businesses Municipal employee Enforcement personnel	No
Materials Management-Oil Recycling	Yes	Yes	Businesses Municipal employee Enforcement personnel	No

1.3.9 PART I. 2016 STORMWATER MANAGEMENT PROGRAM (SWMP) SUMMARY

1.3.9.1 PUBLIC EDUCATION AND OUTREACH

BMP Description or BMP ID (e.g. MCM-1)	Education Topic (Identify the issue your BMP is educating the public about.)	Outreach Method (Describe the method used to convey this topic, e.g. mailing, events, school, etc.)	Measurable Goal (What is the end result of this program? What indicator will determine the goal has been met? (e.g., number mailing sent, people at event, class participation, etc.)
Distribution of Educational Material related to storm water management	Illicit Discharges Pet Waste Vehicle Maintenance and Washing Septic System Maintenance	Brochures, newsletters, flyers and posters available through the Municipal webpage	Number of downloaded materials



Stormwater related Public Service Announcements	Erosion and Sediment Control Waste Management Septic System Maintenance Storm Sewer System Maintenance	Public Service Announcements transmitted through local radio station	Number of announcements transmitted per month.
Educational Outreach with Schools	Stormwater issues and recommended BMPs	Environmental Fair conducted once a year where all schools are invited to participate	Number of schools and children that participated and received information regarding stormwater topics.

1.3.9.2 PUBLIC INVOLVEMENT

BMP Description or BMP ID (e.g. MCM-1)	Program Description (Describe the program and how it will inspire public participation, e.g. special events, volunteer sampling and monitoring efforts, household hazardous waste recycling, etc.)	Measurable Goal (What is the end result of this program? What indicator will determine the goal has been met? (e.g., participation, amount of sampling performed, waste collected, etc.)
Annual Clean-up	The Annual Clean-up takes place once a year with the participation of community volunteers, Scuba Dogs Society and the Municipality.	The amount of volunteers and waste collected will determine program effectiveness.
Environmental Complaint Hotline	Environmental Complaints will be received and investigated by the Municipality.	The amount of complaints received and resolved
Annual Public Meeting	The Municipality will hold an annual meeting to allow the public to participate in the review and implementation of the SWMP	The number of people attending the meetings

**1.3.9.3 ILLICIT DISCHARGE DETECTION AND ELIMINATION**

BMP Description or BMP ID (e.g. MCM-1)	Program Description (Describe the program and how it will identify and remove illicit connections from the MS4, e.g. new regulations, investigation practices, removal of illicit connections, etc.)	Measurable Goal (What is the end result of this program? What indicator will determine the goal has been met? (e.g., adoption of bylaws/ordinances, amount of investigation performed, identified and removed illicit connections, etc.)
Storm Sewer System Map	The Map will include elements required in section 2.4.4.6 (a)(i) of 2016 GP.	The measurable goal will be met once the Map is completed in its entirety.
Implement Regulations to Enforce Non-stormwater Discharges	Existing Ordinance will be revised and continue to be implemented.	Number of Illicit Discharges detected and eliminated
Program to Detect, Identify and Eliminate Illegal Discharges	The Program shall include all requirements in Sec 2.4.4.8 of 2016 GP, including catchment priority ranking, investigation and sampling procedures.	Number of Illicit Discharges detected and eliminated
Outfall Inventory	All outfalls will be identified and inspected according to Sec 2.4.4.7 of 2016 GP.	Number or of outfalls identified and inspected
Program to Detect and Eliminate Sanitary Overflows	SSOs will be inspected and eliminated according to Sec 2.4.4.4 of 2016 GP.	Number of SSOs identified and eliminated

**1.3.9.4 CONSTRUCTION SITE STORMWATER RUNOFF CONTROL**

BMP Description or BMP ID (e.g. MCM-1)	Program Description (Describe the program and how it will help control stormwater runoff at construction sites, e.g. new regulations, construction practices, inspection protocols, etc.)	Measurable Goal (What is the end result of this program? What indicator will determine the goal has been met? (e.g., adoption of bylaws/ordinances, amount of inspections performed and sites actively regulated, etc.)
Ordinance or Other Regulatory Mechanism	The Municipality will continue to implement municipal ordinance requiring erosion and sedimentation controls for polluted runoff from construction sites with a land disturbance of greater than or equal to one acre (4,046.8564 square meters) or if the construction activity disturbs less than one acre but is part of a larger common plan of development or sale that will disturb one acre or more.	The number of regulatory mechanisms created and the number of penalties imposed.
General Construction Site Waste Controls	<p>To comply with this BMP, the Municipality developed an ordinance for storm water runoff control at construction sites. The inspection staff will conduct the construction site waste controls inspection and follow up on the correction of deficiencies encounter during the inspections.</p> <p>For the implementation of this municipal ordinance, the Municipality developed a Standard Operating Procedure (SOP) for the inspection of construction projects, which includes</p>	<p>Number of erosion control projects reviewed.</p> <p>Number of inspections conducted.</p>



	trainings to inspection staff and construction related professionals.	
Information Submitted by the Public	The Municipality developed a Standard Operating Procedure (SOP) for processing complaints regarding storm water contamination at construction sites, an Inspection Form and Database.	Number of reports received.
Construction Site Inspection and Enforcement	The Municipality developed a Standard Operating Procedure (SOP) and Forms for the inspection of construction sites. The SOP establishes in detail the inspection process that will be followed by municipal employees to ensure the compliance with the SWPPP, CES Plan and the Construction Site Waste Controls.	Number of inspections conducted.

1.3.9.5 POST-CONSTRUCTION STORMWATER MANAGEMENT IN NEW DEVELOPMENT AND REDEVELOPMENT

BMP Description or BMP ID (e.g. MCM-1)	Program Description (Describe the program and how it will control stormwater runoff from properties after they are developed, e.g. new regulations, practices, or resources for contractors to use Low Impact Development (LID), etc.)	Measurable Goal (What is the end result of this program? What indicator will determine the goal has been met? (e.g., adoption of bylaws/ordinances, amount of implemented practices, development of capacity building resources, etc.)
Ordinances or Other Regulatory Mechanisms	The Municipality will develop a regulatory mechanism for the implementation of the Operation and Maintenance Post Construction BMP's	The development of the municipal ordinance and approval of the municipal ordinance by the Municipal Legislature and Mayor;



	<p>Program for new development or redevelopments. The goal of this storm water management ordinance for post-construction runoff is to limit surface runoff volumes and reduce water runoff pollutant loadings.</p> <p>The ordinance will establish mechanisms to ensure compliance with the post construction operation and maintenance BMP's, including the sanctions and enforcement mechanisms. The possible sanctions will include non-monetary penalties (such a stop work orders) and/or fines up to \$500 per violation per day.</p> <p>The implementation will include trainings to inspection staff, developers, contractors, designers and construction related professionals. The training would include classroom presentations, in-field training, and follow-up evaluations to determine whether the training was effective. The trainings will be offered at least once a year.</p>	<p>The development of SOP for the review and inspection of O&M Plans;</p> <p>The implementation of the SOP for the review and inspection of O&M Plans; and</p> <p>Number of attendees to the training of municipal employees and construction related professionals.</p>
Structural and Non- Structural BMPs Guide	<p>The Municipality will develop a guide to promote the use of structural and non- structural BMPs on new developments and redevelopments.</p>	<p>The number of structural and non-structural BMPs used;</p> <p>The number of educational materials</p>



	<p>The implementation will include trainings to inspection staff, developers, contractors, designers and construction related professionals. The training would include classroom presentations, in-field training, and follow-up evaluations to determine whether the training was effective.</p>	<p>distributed through mailing lists; and</p> <p>The number of BMPs installed to manage runoff Post Construction.</p>
<p>Inspection and Maintenance Program</p>	<p>The Municipality will develop an inspection and maintenance program to maintain the effectiveness of post-construction storm water control BMP's. All BMP's shall be inspected for continued effectiveness and structural integrity at regular inspection intervals. The inspector shall document whether the BMP is performing correctly, any damage to the BMP since the last inspection, and any repairs to the BMP if damage has occurred.</p> <p>A municipal ordinance and a standard operating procedure (SOP) be will developed for the implementation of the Operation and Maintenance Post Construction BMP's Program for new development or redevelopments.</p>	<p>The number of agreements approved for Post Construction BMP's; and</p> <p>The number of inspections conducted by municipal employees on Post Construction BMP's.</p>

**1.3.9.6 GOOD HOUSEKEEPING AND POLLUTION PREVENTION IN MUNICIPAL OPERATIONS**

BMP Description or BMP ID (e.g. MCM-1)	Program Description (Describe the program and how it will mitigate stormwater runoff at municipal properties or through municipal activities, e.g. installation of structural stormwater controls on the municipal properties, new practices to reduce pollutant exposure to rain events, runoff management, trainings, etc.)	Measurable Goal (What is the end result of this program? What indicator will determine the goal has been met? (e.g., structural BMPs installed, SOPs developed and implemented, etc.)
Operations and Maintenance (O & M) Programs	The municipality will develop an inventory of all facilities and review this inventory annually and update as necessary. In addition the municipality will develop written operations and maintenance procedures for the municipal activities listed below: Parks and open spaces- Develop procedures to address the proper use, storage, and disposal of pesticides, herbicides, fertilizers, lawn clippings and other vegetative waste. Develop procedures for management of trash containers at parks and for placing signage in areas concerning the proper disposal of pet wastes.	Inventory of municipal facilities; The number of operation and maintenance procedures developed; The frequency of inspection and maintenance visits to facilities; The number of personnel trained O & M procedures; and The number of educational materials distributed to municipal employees with information of O & M procedures.



	<p>Buildings and facilities where pollutants are exposed to stormwater runoff-</p> <p>Develop procedures for the use, storage, and disposal of petroleum products and other potential stormwater pollutants</p> <p>Develop management procedures for dumpsters and other waste management equipment.</p> <p>Develop SPCC Plans where applicable.</p> <p>Vehicles and Equipment-</p> <p>Develop procedures for the storage and maintenance of municipal vehicles.</p> <p>Develop procedures for fueling areas</p> <p>Develop procedures to ensure that vehicle wash waters are not discharged to the municipal storm sewer system or to surface waters.</p> <p>Infrastructure Operations and Maintenance</p> <p>Develop a program detailing the activities and procedures to maintain MS4 infrastructure to reduce the discharge of pollutants from the MS4</p> <p>Develop schedule for the</p>	
--	---------------------------------------------------------------------------------------------------------------------------------------------------------------------------------------------------------------------------------------------------------------------------------------------------------------------------------------------------------------------------------------------------------------------------------------------------------------------------------------------------------------------------------------------------------------------------------------------------------------------------------------------------------------------------------------------------------------------------------------------------------------------------------------------------------------------------------------------------------------------------------------------------------------------	--



	<p>frequency of routine cleaning and inspections that will ensure that no catch basin at anytime will be more than 50 percent full.</p> <p>Develop procedures for sweeping and/or cleaning streets, and municipal-owned parking lots.</p> <p>Develop procedures for proper storage and disposal of catch basin cleanings and street sweepings to ensure it does not discharge to receiving waters.</p>	
Spill Response and Prevention Program	<p>The Municipality shall develop procedures for spill response and prevention plans that shall state how to stop, contain, cleanup, dispose of contaminated materials, and train personnel to prevent and control future spills. This plan shall be applicable to all sites where hazardous wastes are stored or used.</p> <p>Municipal employees will be train at least once a year about spill response and prevention techniques. Records of the trainings offered to employees will be retained for a period of 5 years.</p>	<p>Inventory of municipal facilities at risk for spills;</p> <p>The number of preventative maintenance procedures performed on tanks, valves, pumps, pipes, and other equipment;</p> <p>Development of a spill response plan for municipal facilities;</p> <p>The number of personnel trained in spill response and prevention techniques; and</p> <p>The number of educational materials distributed to municipal employees with</p>



		information of spill response and prevention plans.
Staff Training Program	<p>The Municipality will develop a training and education component of the operations and maintenance program designed to reduce pollutant runoff from municipal operations.</p> <p>Municipal employees who are directly involved in potentially polluting activities such as materials management would receive both general stormwater and targeted BMP training tailored to their activities. This will increase the likelihood that receiving waters and the storm drain system will be protected from inadvertent discharges and spills.</p> <p>The trainings will be provided on the field and at least once a year, it will train municipal employees on good housekeeping practices, spill response and prevention techniques and material management of hazardous and non-hazardous substances. The training will be mandatory for all municipal employees. Supervision is essential for the success of this minimum control measure.</p>	<p>The number of personnel trained in spills response and prevention techniques, good housekeeping practices and materials and waste management (hazardous and non-hazardous).</p>



Stormwater Pollution Prevention Programs (SWPPP)	Develop and fully implement a SWPPP for the following municipality-owned or operated facilities: maintenance garages, public works yards, transfer stations, and other waste handling facilities where pollutants are exposed to stormwater. SWPPPs shall include all elements required in Part 2.4.7.2 (b)(i-vi) of 2016 GP.	Inventory of municipal facilities that require SWPPP; Development of SWPPP for municipal facilities; The frequency of inspections visits at municipal facilities; The number of personnel trained in SWPPP; and The number of educational materials distributed to municipal employees with information of spill response and prevention plans.
---------------------------------------------------------	--------------------------------------------------------------------------------------------------------------------------------------------------------------------------------------------------------------------------------------------------------------------------------------------------------------------------------------	----------------------------------------------------------------------------------------------------------------------------------------------------------------------------------------------------------------------------------------------------------------------------------------------------------------------------------------------------------------------------------------------------------------



1.3.10 PART J. APPLICATION CERTIFICATION AND SIGNATURE

I certify under penalty of law that this document and all attachments were prepared under my direction or supervision in accordance with a system designed to assure that qualified personnel properly gathered and evaluated the information submitted. Based on my inquiry of the person or persons who manage the system, or those persons directly responsible for gathering the information, the information submitted is, to the best of my knowledge and belief, true, accurate, and complete. I am aware that there are significant penalties for submitting false information, including the possibility of fine and imprisonment for knowing violations.



Signature of Mayor/Elected Official:

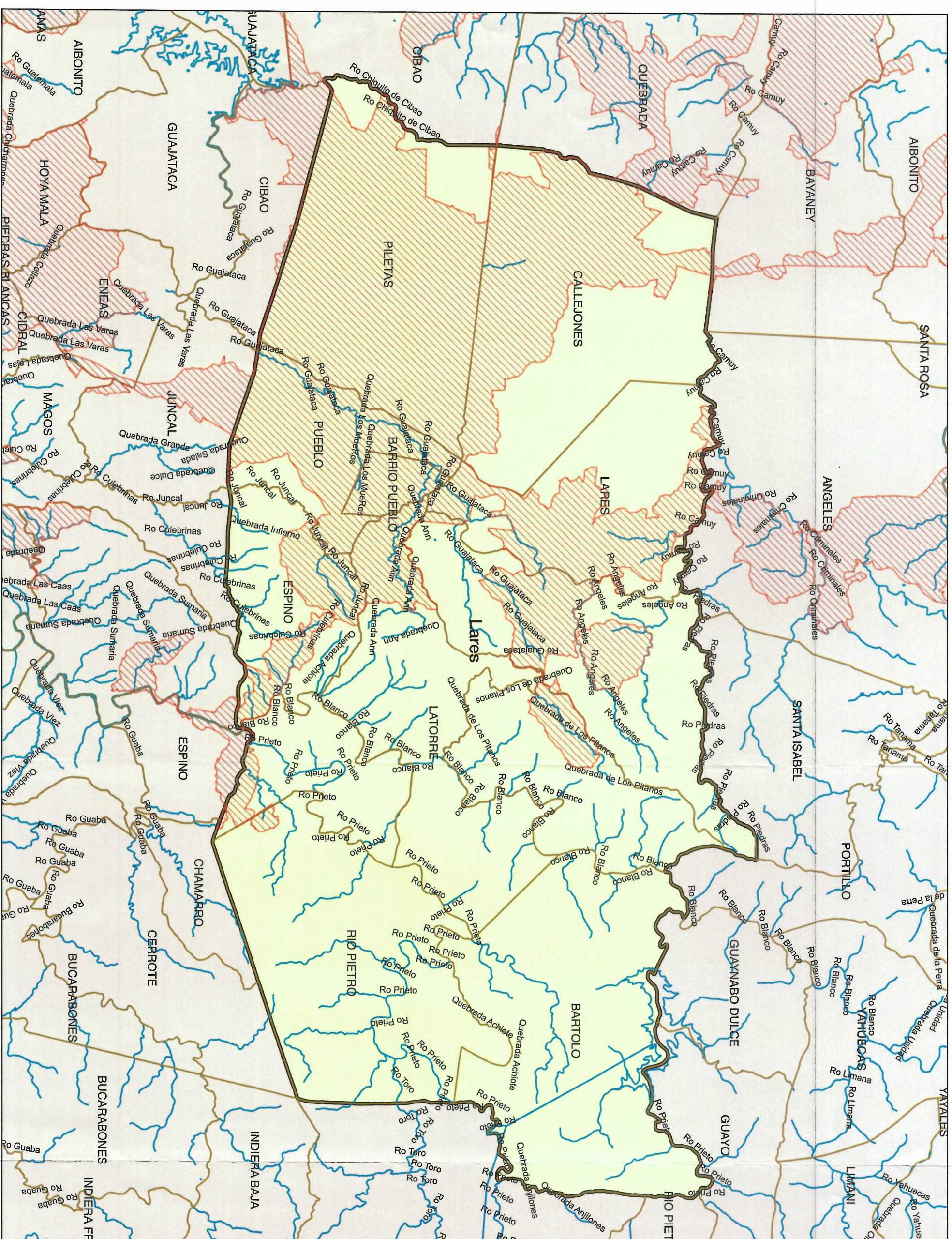
Hon. Roberto Pagán Centeno
Print Name of Mayor/Elected Official:

Title: **Mayor of Lares**

Date: 26/sep/16

APPENDIX A – MAPS

Urbanized Areas
Notice of Intent - NPDES MS4 PRR0400000



Legend

Urbanized Areas (U.S. Census 2010)

 Urbanized Areas

Wards

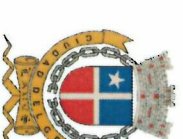
Waterbodies

Municipality

☐ Lares

Source:
US Census Bureau TIGER data, 2010 Census

Projection:
State Plane Coordinate System - Puerto Rico
Horizontal Datum - NAD83





Legend

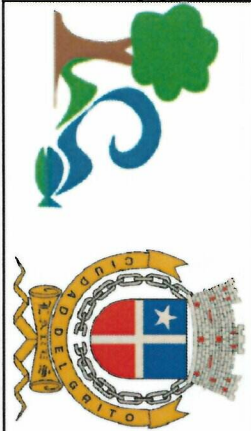
Waterbodies

Stormwater Outfalls

Municipio Autónomo de
Lares

**MAPA DE LOCALIZACIÓN
DE DESAGÜES PLUVIALES**

En Casco Urbano de Municipio de
Lares



APPENDIX B – ELIGIBILITY DETERMINATION



United States Department of the Interior



FISH AND WILDLIFE SERVICE

Caribbean Ecological Services

Field Office

P.O. Box 491

Boqueron, PR 00622

In Reply Refer To:
FWS/R4/CESFO/72-081-GEN

JUL 27 2016

Mrs. Keila Pacheco
ACE Environmental, Inc.
Po Box 19895
San Juan, Puerto Rico 00910-9895

Re: LaresNPDES MS4-2014 Permit

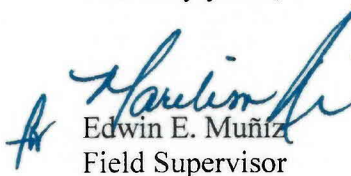
Dear Mrs. Pacheco:

We have reviewed your request for information about endangered and threatened species and their habitats for the above referenced project. Our comments are provided under the Endangered Species Act (Act) of 1973, as amended (87 Stat. 884, as amended; 16 United States Code 1531 et seq.).

The Municipality of San Lorenzo, Puerto Rico is requesting coverage under the 2014 NPDES (National Pollutant Discharge Elimination System) General Permit for the MS4 (Municipal Separate Storm Sewer System). The MS4 collected storm water discharge into the Guajataca River and the Anon creek.

Based on the information provided and the nature of the permit we believe that the storm water discharge is not likely to adversely affect federally listed threatened or endangered species or their designated critical habitat(s) under our purview. Therefore, no further consultation is required. Nevertheless, if the project is modified or if information on impacts to listed species becomes available this office should be contacted concerning the need for the initiation of consultation under section 7 of the Act.

Sincerely yours,


Edwin E. Muñiz
Field Supervisor

agcs

cc
Municipality of Lares
EPA, San Juan



Hon. Roberto Pagán Centeno
Alcalde

Estado Libre Asociado de Puerto Rico
Municipio Autónomo de Lares
P.O. Box 395
Lares, Puerto Rico 00669



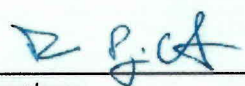
Tel. (787) 897-2300
Fax. (787) 897-7510

Certification


The Autonomous Municipality of Lares is currently in the process of requesting coverage under the 2014 NPDES (National Pollutant Discharge Elimination System) General Permit for MS4 (Municipal Separate Storm Sewer System). As such, it must determine its eligibility with regard to the protection of historic properties prior to submitting a notice of intent (NOI) for permit coverage.

The Municipality of Lares does not have any stormwater infrastructure projects planned within the area of potential effects (APE) of the historic properties or properties eligible for listing in the National Register of Historic Places. The Municipality is therefore determining eligibility under Criterion A: "There is no potential of an adverse effect on historic properties because there will be no new ground disturbing control measures constructed or installed."

If any municipal infrastructure projects were to take place that could affect any of the above mentioned properties the Municipality will request a consultation under section 106 of the National Historic Preservation Act (NHPA).



Signature



Date

ROBERTO PAGAN CENTENO
Name

MAYOR
Position