


Estado Libre Asociado de Puerto Rico
Municipio Autónomo de Caguas

Oficina de Asuntos Ambientales

FECHA: 29 DE SEPTIEMBRE DE 2016

PARA: PLAN. CARMEN GUERRERO PEREZ
DIRECTORA
OFICINA DEL CARIBE
AGENCIA FEDERAL DE PROTECCION AMBIENTAL
ATTN: SERGIO BOSQUE
STORMWATER COORDINATOR

DE:  GUILLERMO RIVERA CRUZ, PPL
DIRECTOR

ASUNTO: RADICACION NOI
PERMISO NPDES - MS4
MUNICIPIO DE CAGUAS

2016 SEP 29 PM 2:05

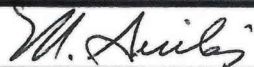
RECIBIDO
OFICINA DE ASUNTOS AMBIENTALES
MUNICIPIO DE CAGUAS

Mensaje:

Adjunto el documento de referencia para su información y trámites correspondientes.

Cualquier duda o información adicional sobre este asunto, favor comunicarse con este servidor.

Recibido por:



Fecha:

9/29/16

September 28, 2016

HAND DELIVERED

Mrs. Carmen Guerrero Pérez
Director
US Environmental Protection Agency
Caribbean Environmental Protection Division
City View Plaza II – Suite 7000
#48 Rd 165, Km. 1.2
Guaynabo, PR 00968-8069

**NOTICE OF INTENT NPDES PERMIT NO. PR040001-
AUTONOMOUS MUNICIPALITY OF CAGUAS
SMALL MUNICIPAL SEPARATE STORMSEWER SYSTEM**

Dear Mrs. Guerrero:

As requested in the provisions of the Clean Water Act, as amended, we are submitting our Notice of Intent (NOI) for the NPDES Permit mentioned in reference.

If you need any further information, please contact Mr. Guillermo Rivera Cruz, our Environmental Affairs Office Director at (787) 653-6354.



William E. Miranda Torres
Mayor

WMT/grc

Enclosure



NOTICE OF INTENT 2016
MS4 NPDES PERMIT NO. PR040001
AUTONOMOUS MUNICIPALITY OF CAGUAS
SMALL MUNICIPAL SEPARATE
STORMSEWER SYSTEM



PO BOX 907 CAGUAS, PUERTO RICO 00726 • TELEPHONE (787) 653-8833
Approved by the CEE-SA-16-921.



TABLE OF CONTENTS

Part A. General Information.....	1
Part B. Primary MS4 Program Manager Contac information.....	1
Part C. Eligibility Determination.....	2
Part D. Map/ Boundaries.....	2
Part E. MS4 Infrastructure.....	2
Part F. Bylaw/ Ordinance Development.....	3
Part G. Receiving Waters.....	3
Part H. Summary of Stormwater Management Program (SWMP) under 2006 Small MS4	
General Permit.....	4
MCM Public Education and Outreach.....	4
MCM Public Involvement and Participation.....	4
MCM Illicit Discharge Detection and Elimination.....	5
MCM Construction Site Stormwater Runoff Control.....	5
MCM Post- Construction Stormwater Management in New Development and Redevelopment.....	6
Good Housekeeping and Pollution Prevention in Municipal Operations.....	6
Part I. 2016 Stormwater Management Program (SWMP) Summary	
Public Education and Outreach.....	7
Public Involvement and Participation.....	8
Illicit Discharge Detection and Elimination.....	9
Construction Site Stormwater Runoff Control.....	10
Post- Construction Stormwater Management in New Development and Redevelopment.....	11
Good Housekeeping and Pollution Prevention in Municipal Operations.....	12
Part J. Application Certification Signature.....	13
Appendices.....	14
NPDES No. PRR 40001 Location Map	
NPDES No. PRR 40001 Zone 1 Outfalls Map	



United States Environmental Protection Agency
National Pollutant Discharge Elimination System
Notice of Intent (NOI) for coverage under the Small Municipal Separate
Storm Sewer System (MS4) General Permit (PRR040000) for Puerto Rico

Part A. General Information

1. Name of Municipality or Organization: Autonomous Municipality of Caguas
2. Type: ☐ Federal ☐ State ☒ Municipality ☐ Other: _____
3. Existing Permittee: ☒ Yes ☐ No EPA NPDES Permit Number: P R R 0 4 0 0 0 1
4. Location Address:
 - a. Street: José Mercado Avenue & Padial Street
Ángel Rivera Rodríguez Municipal Building
 - b. City: Caguas State: PR Zip Code: 00725
5. Mailing Address:
 - a. Street: PO Box 907
 - b. City: Caguas State: PR Zip Code: 00726
6. Telephone Number: (787) 286- 1064 Fax: (787) 746-6562
7. E-mail: william.miranda@caguas.gov.pr
8. Standard Industrial Classification (SIC) Code: 9 1 9 9
9. Latitude: _____ Longitude: _____
2.2.4.2 Approximate center of the regulated portion of the MS4.
1 8 ° 1 4 ' 1 " N (degrees, minutes, seconds) -6 6 ° 2 ' 3 3 " W (degrees, minutes, seconds)

Part B. Primary MS4 Program Manager Contact Information

1. Name: Guillermo Rivera Cruz
2. Position Title: Environmental Affairs Office Director
3. Stormwater Management Program (SWMP) Location (web address or physical location): _____
Environmental Affairs Office, Municipal Building
4. Mailing Address:
 - a. Street: PO Box 907
 - b. City: Caguas State: PR Zip Code: 00726



5. Telephone Number: (787) 653-6354

6. E-mail: guillermor@caguas.gov.pr

Part C. Eligibility Determination

1. Endangered Species Act (ESA) determination complete? ☒ Yes ☐ No

a. Eligibility Criteria (check all that apply): ☐ A ☒ B ☐ C ☐ D ☐ E ☐ F

2. National Historic Preservation Act (NHPA) determination complete? ☒ Yes ☐ No

a. Eligibility Criteria (check all that apply): ☒ A ☐ B ☐ C ☐ D

Part D. Map/Boundaries

1. MS4/Organization Description of regulated boundaries (narrative):

The City of Caguas is located in the Central-Eastern region of the island of Puerto Rico. Caguas is the largest city in the region in terms of its territorial extension and population. It is located south of San Juan and Trujillo Alto, west of Gurabo and San Lorenzo (divided from these two municipalities by the Río Grande de Loíza, east of Aguas Buenas, Cidra, and Cayey. The city is the core of major transportation routes connecting the urban areas of San Juan, Ponce, and Humacao and has traditionally served as the economic center to the eastern central region of the Island.

Caguas MS4 consider for this permit is complex due to the different activities (construction, industrial, commerce, housing development) within the City. It is interconnected with the storm water sewer system operated and maintained by the Puerto Rico Department of Transportation and Public Works and that of the Highway and Transportation Authority. Our MS4 is composed mainly by street curbs, storm drains, storm inlets, subsurface pipes, open channel flows, and simple stormwater conveying systems. Most outfalls discharge directly to a water body (streams and rivers). There are four (4) rivers that pass through the municipality of Caguas: in the North, Río Cañas and Río Bairoa: in the central area, Río Bairoa and in the South, the Río Turabo. All these rivers discharge into the Río Grande de Loíza, which serves as boundary between Caguas and the municipalities of San Lorenzo and Gurabo.

2. Location Map/Boundaries. A location map must be attached showing the pertinent city, town, wards, or boundaries, the boundaries of the Small MS4, including surface water body(s), and the "urbanized area" (UA) when applicable.

Is map attached? ☒ Yes ☐ No

Part E. MS4 Infrastructure (if covered under the 2006 general permit)

1. Estimated Percent of Outfall Map Complete? (Section 4.2.3 of 2006 general permit): 24.6 %

a. If 100% of 2006 requirements are not met, enter an estimated date of completion: Unknown
(MM/DD/YYYY)

b. Web address where MS4 map is published: NONE

Part F. Bylaw/Ordinance Development (if covered under the 2006 general permit)

1. Illicit Discharge Detection and Elimination (IDDE) authority adopted? ☒ Yes ☐ No

a. Effective Date or Estimated Date of Adoption: 02/04/2003
 (MM/DD/YYYY)

2. Construction/Erosion and Sediment Control authority adopted? ☒ Yes ☐ No

a. Effective Date or Estimated Date of Adoption: 10/26/2009
 (MM/DD/YYYY)

3. Post-Construction Stormwater Management adopted? ☐ Yes ☒ No

a. Effective Date or Estimated Date of Adoption: _____
 (MM/DD/YYYY)

Part G. Receiving Waters

List the names of all surface waterbody segments to which your MS4 discharges. For each waterbody segment, please report the number of outfalls discharging into it and, if applicable, any impairments. You may attach additional information.

Waterbody segment that receives flow from MS4	Number of Outfalls into receiving waterbody segment	Have any monitoring been performed to outfalls?(Yes/No)	List of Pollutant(s) causing impairment (if applicable)	List of TMDL Pollutant (s) (if any)
Río Cagüitas PRER14H	Unknown	NO	Cyanide Total Coliforms Surfactants Temperature Turbidity Total Phosphorus Total Nitrogen	None
Río Bairoa PRER14I	Unknown	NO	Cyanide Total Phosphorus Total Coliforms Turbidity Total Nitrogen	None
Río Turabo PRER14J	Unknown	NO	Copper Cyanide Total Coliforms Turbidity pH	None
Río Cañas PRER14F	Unknown	NO	Arsenic Cyanide	None
Río Grande de Loíza PERE14A2	Unknown	NO	Total Phosphorus Plaguicides Total Coliforms Surfactants Total Nitrogen	None

9

Part H. Summary of Stormwater Management Program (SWMP) under the 2006 Small MS4 General Permit

For every measurable goal and associated Best Management Practice (BMP) listed in the adopted program, provide the following information (You may include additional pages):

MCM Public Education and Outreach

BMP Description	Goal Achieved? (Yes/No)	Continued in next Permit cycle?(Yes/No)	Who was the targeted Audience? Explain reason for not achieving goal.	Modification(s) to goals or BMP for next permit cycle
Distribute Stormwater Education Materials	Yes	Yes	General public, restaurants and other businesses All school levels	Update as needed with most recent material and infographics.
Stormwater Workshops	Yes	Yes	Residents Businesses All school levels	Update, as needed with most recent material and infographics.
Stormwater Workshops for Industry	Yes	No	Industries located at the 4 main industrial parks in Caguas.	This BMP will be substituted for MSGP inspections as needed (inquiries), to verify compliance with this permit.
Educational Website	Yes	Yes	General Public	Update as needed with most recent material and infographics.
Create a Stormwater Hotline Link	Yes	Yes	General Public	Hot line link has been substituted for various telephone lines in different municipal dependencies.

MCM- Public Participation and Involvement

BMP Description	Goal Achieved? (Yes/No)	Continued in next Permit cycle?(Yes/No)	Who was the targeted Audience? Explain reason for not achieving goal.	Modification(s) to goals or BMP for next permit cycle
Meet with Local Community Groups and Organizations to Involve them in Stormwater Efforts	Yes	Yes	General Public, organized community groups.	Participate in the Municipal Community Committee meetings
Develop and Conduct Periodical "Focus Groups" from the Community to Discuss Stormwater Related Issues	No	No	This BMP is very similar to the one above. It duplicates the efforts to achieve the same goal.	It will be consolidated with the one above.
Conduct Public Hearings on Stormwater Issues	Yes	Yes	General Public.	If not feasible a public hearing, the Community Committee meetings (from the planning office) will be used instead, as their members represent all wards of the municipality.

MCM Illicit Discharge Detection and Elimination

BMP Description	Goal Achieved? (Yes/No)	Continued in next Permit cycle?(Yes/No)	Who was the targeted Audience? Explain reason for not achieving goal.	Modification(s) to goals or BMP for next permit cycle
Create Municipal Ordinance(s) for Detection and Elimination of Illegal Discharges	Yes	No	Municipal Government	Periodic revision.
Stormwater System Map of MS4	No	Yes	Only 24.6% of the stormwater system has been completed. A budget cut due to general economic downturn has delayed the project mapping.	Continue with mapping and update as needed, depending on budget availability.
Inventory of Federally Impaired Water Bodies	Yes	Yes	n/a	Update as needed.
Digitalized Maps Upgrading System	No	Yes	Base map has not been completed.	Continue in the next permit cycle.
Develop an Inspection and Enforcement Program	Yes	Yes	n/a	Revise and update as needed.

MCM Construction Site Runoff Control

BMP Description	Goal Achieved? (Yes/No)	Continued in next Permit cycle?(Yes/No)	Who was the targeted Audience? Explain reason for not achieving goal.	Modification(s) to goals or BMP for next permit cycle
Creation of Ordinance(s) for the Review of Erosion and Sediment Control (ESC) for New Developments and Construction Projects greater or equal to 1 acre	Yes	No	n/a	Modification as needed to comply with new requirements.
Develop Procedures for Review of Required Control Measures and Reports	Yes	Yes	n/a	Update as needed.
Construction Site Inspections	Yes	Yes	n/a	Update inspection procedures as needed.

MCM Post-Construction Runoff Control

BMP Description	Goal Achieved? (Yes/No)	Continued in next Permit cycle?(Yes/No)	Who was the targeted Audience? Explain reason for not achieving goal.	Modification(s) to goals or BMP for next permit cycle
Development of Municipal Ordinance(s) to Support Post-Construction Runoff Control	No	Yes	Due to lack of authority, the municipality has not completed achieved this goal.	Determine by which means the municipality will have the authority to perform this task.
Inspection Program and Inventory of Structural Runoff Controls	No	Yes	Due to lack of authority, the municipality has not completed achieved this goal.	Determine by which means the municipality will have the authority to perform this task.

MCM Pollution Prevention and Good Housekeeping

BMP Description	Goal Achieved? (Yes/No)	Continued in next Permit cycle? (Yes/No)	Who was the targeted Audience? Explain reason for not achieving goal.	Modification(s) to goals or BMP for next permit cycle
Employee Training	Yes	Yes	Municipal employees (field staff).	Update as needed
Stormwater Inspections	Yes	Yes	n/a	Modification as needed to add new permit requirements.
Storm System Cleaning and Recordkeeping	Yes	Yes	n/a	Update as needed

Part I. 2016 Stormwater Management Program (SWMP) Summary

Public Education and Outreach (See Section 2.4.2 for detailed information of required BMPs):

BMP Description or BMP ID	Education Topic (Identify the issue your BMP is educating the public about.)	Outreach Method (Describe the method used to convey this topic, e.g. mailing, events, school, etc.)	Measurable Goal (What is the end result of this program? What indicator will determine the goal has been met? (e.g., number mailing sent people at event, class participation, etc.)
Develop and distribute educational materials targeting pollutants of concern.	Educate public employees, businesses and general public of hazards associated with pollutants of concern according to 303d impaired waters list.	Distribution of brochures and handouts during different events such as forums, workshops and trainings. Publish notes in social media.	Number materials distributed during the reporting period. Number of likes in social media.
Deliver workshops and seminars to educate about pollutants of concern.	Educate public employees, businesses and the general public about best management practices for stormwater pollution prevention.	Deliver workshops and seminars at schools and communities throughout the city. Deliver workshops and seminars to public employees at all levels.	Community participation. Employee participation. Number of complaints received.
Maintain an Educational Page within the city's internet site.	Best management practices for stormwater pollution prevention emphasizing in pollutants of concern according to 303d impaired waters list.	Digital copies of brochures and educational material available. Links to local and federal government agencies that addresses stormwater issues	Number of complaints received. Number of likes in social media. Web counter reports, where available.

Subject change, after review and update of 2006 SWMP.

Part I. 2016 Stormwater Management Program (SWMP) Summary (continued)

Public Involvement and Participation (See Section 2.4.3 for detailed information of required BMPs):

BMP Description or BMP ID (e.g. MCM- 1)	Program Description (Describe the program and how it will inspire public participation, e.g. special events, volunteer sampling and monitoring efforts, household hazardous waste recycling, etc.)	Measurable Goal (What is the end result of this program? What indicator will determine the goal has been met? (e.g., participation, amount of sampling performed, waste collected, etc.)
Conduct Public Hearings	Conduct Public Hearings on Stormwater Issues to use public input in the implementation of the SWMP.	Amount of public participation.
Municipal Clean up events	Involve general public in city's cleanup events by gathering recycling materials and waste found in their properties.	Amount of waste collected Amount of recycling material collected
Availability of SWMP to the public	General public will have the opportunity to review the SWMP, so they can make recommendations and express any concerns.	Amount of public revisions. Amount of recommendations made by the public. Updates made to the SWMP as a result of public reviews.
Meet with Local Community Groups and Organizations to Involve them in Stormwater Efforts	Try to establish liaisons with organizations within the city and during workshops and seminars in schools, communities and businesses.	Amount of meetings and workshops performed.

Subject change, after review and update of 2006 SWMP.

Part I. 2016 Stormwater Management Program (SWMP) Summary (continued)

Illicit Discharge Detection and Elimination (See Section 2.4.4 for detailed information of required BMPs):

BMP Description or BMP ID (e.g. MCM-1)	Program Description (Describe the program and how it will identify and remove illicit connections from the MS4, e.g. new regulations, investigation practices, removal of illicit connections, etc.)	Measurable Goal (What is the end result of this program? What indicator will determine the goal has been met? (e.g., adoption of bylaws/ordinances, amount of investigation performed, identified and removed illicit connections, etc.)
Assessment of Priority Ranking of Catchments	Assessment of catchments using all data available to prioritize the 4 mayor catchments located in the municipality.	Evaluation and revision of all gathered information (data, documents, investigations, inspections). Prioritize catchments based on the assessment.
Illicit Discharge Inspection and Enforcement Program	Continue with the establishment of inspection program. Inspect any illicit discharge detected, notify any responsible parties, and require corrective measures to eliminate the discharge.	Amount of investigations performed by any municipal agency in which an illicit discharge has been detected. Amount of illicit discharge connections removed.
SSO inventory	Identify all known locations where SSO have discharged to the MS4.	Identify SSO occurrences.
Stormwater System Map of MS4 and Outfall Inventory	Map will serve as a planning tool for the Illicit Discharge Detention and Elimination Program.	Number of outfalls identified.
Municipal Ordinance Update	Update municipal ordinance as needed to include illicit discharges not yet addressed.	Adoption of an extended ordinance to comply with new permit's requirements.
Outfall screening and sampling	Outfall screening for evidence of illicit discharges and SSOs during dry and wet weather.	Amount of dry and wet screening performed during the reporting period.

Subject change, after review and update of 2006 SWMP.

Part I. 2016 Stormwater Management Program (SWMP) Summary (continued)

Construction Site Stormwater Runoff Control (See Section 2.4.5 for detailed information of required BMPs):

BMP Description or BMP ID (e.g. MCM-1)	Program Description (Describe the program and how it will help control stormwater runoff at construction sites, e.g. new regulations, construction practices, inspection protocols, etc.)	Measurable Goal (What is the end result of this program? What indicator will determine the goal has been met? (e.g., adoption of bylaws /ordinances, amount of inspections performed and sites actively regulated, etc.)
Revision of existing ordinance.	Revise the current ordinance to determine if requires an update to comply with new requirements.	Update of current ordinance or adoption of a new ordinance.
Implement an enforcement program to reduce pollutants discharges from construction activities disturbing one or more acres	Perform inspections during construction activities to evaluate compliance. Require compliance of federal, state and local laws and regulations regarding construction activities.	Amount of inspections performed. Amount of administrative fines awarded.
Implement site plan Review procedures that describe which plans will be reviewed as well as when an operator may begin construction	To the extent allowable by state law require compliance of federal, state and local laws and regulations regarding construction activities.	Adoption of Site Plan Review Procedures.

Subject change, after review and update of 2006 SWMP.



Part I. 2016 Stormwater Management Program (SWMP) Summary (continued)

Post-Construction Stormwater Management in New Development and Redevelopment (See Section 2.4.6 for detailed information of required BMPs):

BMP Description or BMP ID (e.g. MCM-1)	Program Description (Describe the program and how it will control stormwater runoff from properties after they are developed, e.g. new regulations, practices, or resources for contractors to use Low Impact Development (LID), etc.)	Measurable Goal (What is the end result of this program? What indicator will determine the goal has been met? (e.g., adoption of bylaws/ordinances, amount of implemented practices, development of capacity building resources, etc.)
Complete the development of an ordinance or other regulatory mechanism to regulate runoff from new development and redevelopment projects	Require submittal and reviews of post-construction stormwater management plans, prior to construction for all new construction and redevelopment.	Adoption of an ordinance. Amount of reviewed plans.
Develop a site inspection program to require compliance.	The program will be establish for private and public development sites.	Amount of inspections and administrative fines awarded.
Develop procedures to prevent or minimize impacts to water quality.	Develop a program to have procedures to ensure that any stormwater control or management practice for new development and redevelopment will prevent or minimize impacts to water quality.	Amount of implemented practices throughout the MS4.

Subject change, after review and update of 2006 SWMP.

Part I. 2016 Stormwater Management Program (SWMP) Summary (continued)

Good Housekeeping and Pollution Prevention in Municipal Operations (See Section 2.4.7 for detailed information of required BMPs):

BMP Description or BMP ID (e.g. MCM-1)	Program Description (Describe the program and how it will mitigate stormwater runoff at municipal properties or through municipal activities, e.g. installation of structural stormwater controls on the municipal properties, new practices to reduce pollutant exposure to rain events, runoff management, trainings, etc.)	Measurable Goal (What is the end result of this program? What indicator will determine the goal has been met? (e.g., structural BMPs installed, SOPs developed and implemented, etc.)
Continue with the employee training program.	Train employees on practices to prevent or reduce pollutant runoff from municipal activities in public areas.	Reduction of pollution incidents. Amount of trained employees.
Update the Operations and Maintenance Program.	Update program to include the MS4 new permit requirements.	Implementation of program with all SOPs developed and completed.
Complete a municipal facilities inventory.	Inspect municipal facilities that have potential to expose pollutants to rain events.	Identify which facilities have pollutants exposed to stormwater runoff.
Develop a written program for infrastructure operation and maintenance.	Detail activities that will be implemented to establish a maintenance program to reduce discharge of pollutants from the MS4	Amount of maintenance activities achieved.
Develop stormwater pollution prevention plans (SWPPP) for selected facilities.	Develop SWPPP for conventional and non-conventional municipal operations where pollutants are exposed to stormwater.	Amount of SWPPP completed and implemented.

Subject change, after review and update of 2006 SWMP.

Part J. Application Certification and Signature

I certify under penalty of law that this document and all attachments were prepared under my direction or supervision in accordance with a system designed to assure that qualified personnel properly gathered and evaluated the information submitted. Based on my inquiry of the person or persons who manage the system, or those persons directly responsible for gathering the information, the information submitted is, to the best of my knowledge and belief, true, accurate, and complete. I am aware that there are significant penalties for submitting false information, including the possibility of fine and imprisonment for knowing violations.

Signature of Mayor/ Elected Official: _____



Print name Of Mayor/ Elected Official: _____

William E. Miranda Torres

Title: Mayor

Date: September 20, 2016

Appendices

Appendix A: NPDES No. PRR 40001 Location Map

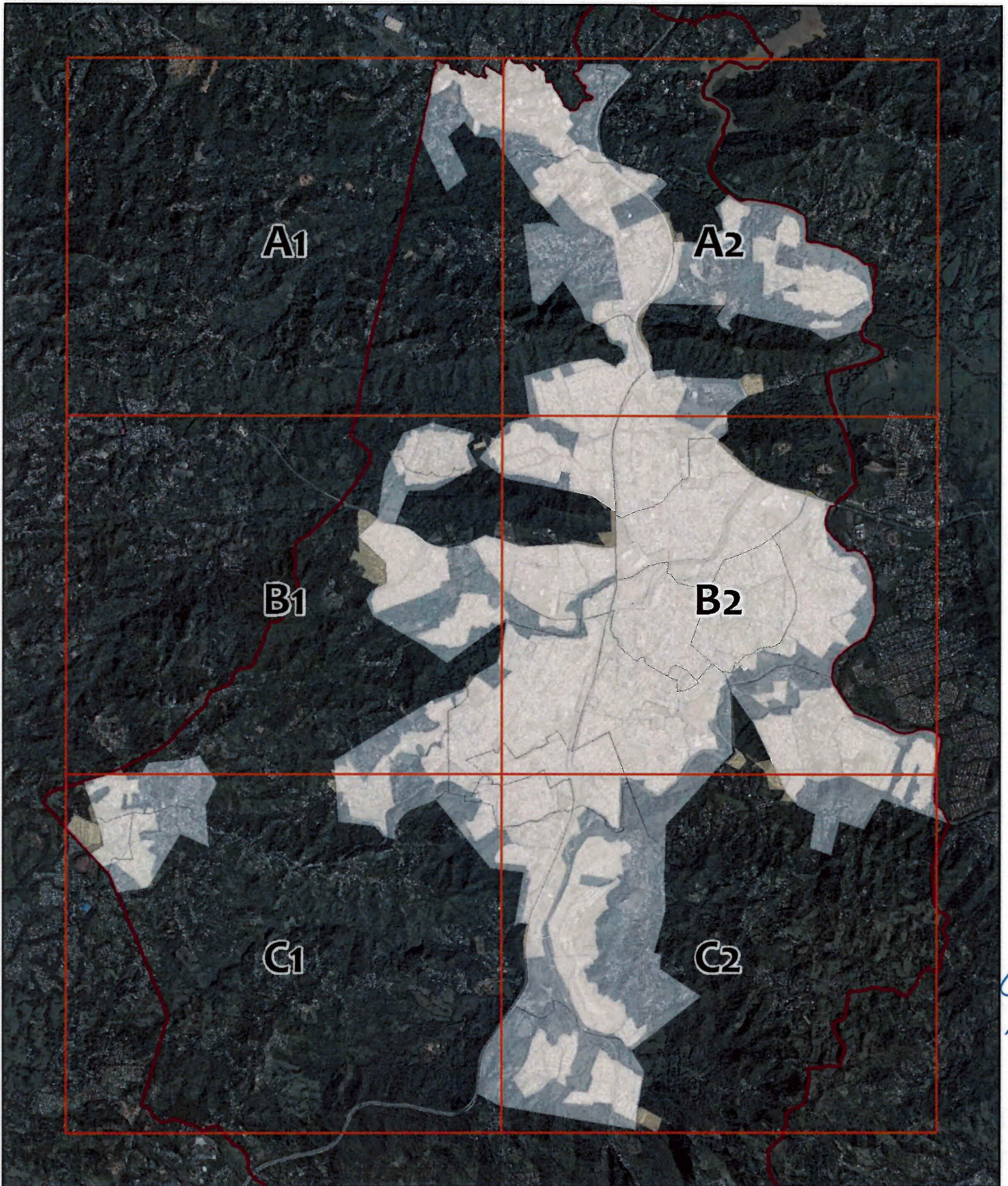
Appendix B: Outfalls Map, NPDES Zone 1

A handwritten signature in blue ink, located in the bottom right corner of the page. The signature is stylized and appears to be a single word or a set of initials.

APPENDIX A

NPDES PERMIT NO. PR040001 LOCATION MAPS





Estado Libre Asociado de Puerto Rico
Municipio Autónomo de Caguas
Oficina de Planificación, UNGEV
Septiembre 2016



NPDES No. PRR 40001 Location Map

0 0.325 0.65 1.3 Miles




1:67,287

69

NPDES No. PRR 40001 Location Map



Estado Libre Asociado de Puerto Rico
Municipio Autónomo de Caguas
Oficina de Planificación, UIGEV
Septiembre 2016



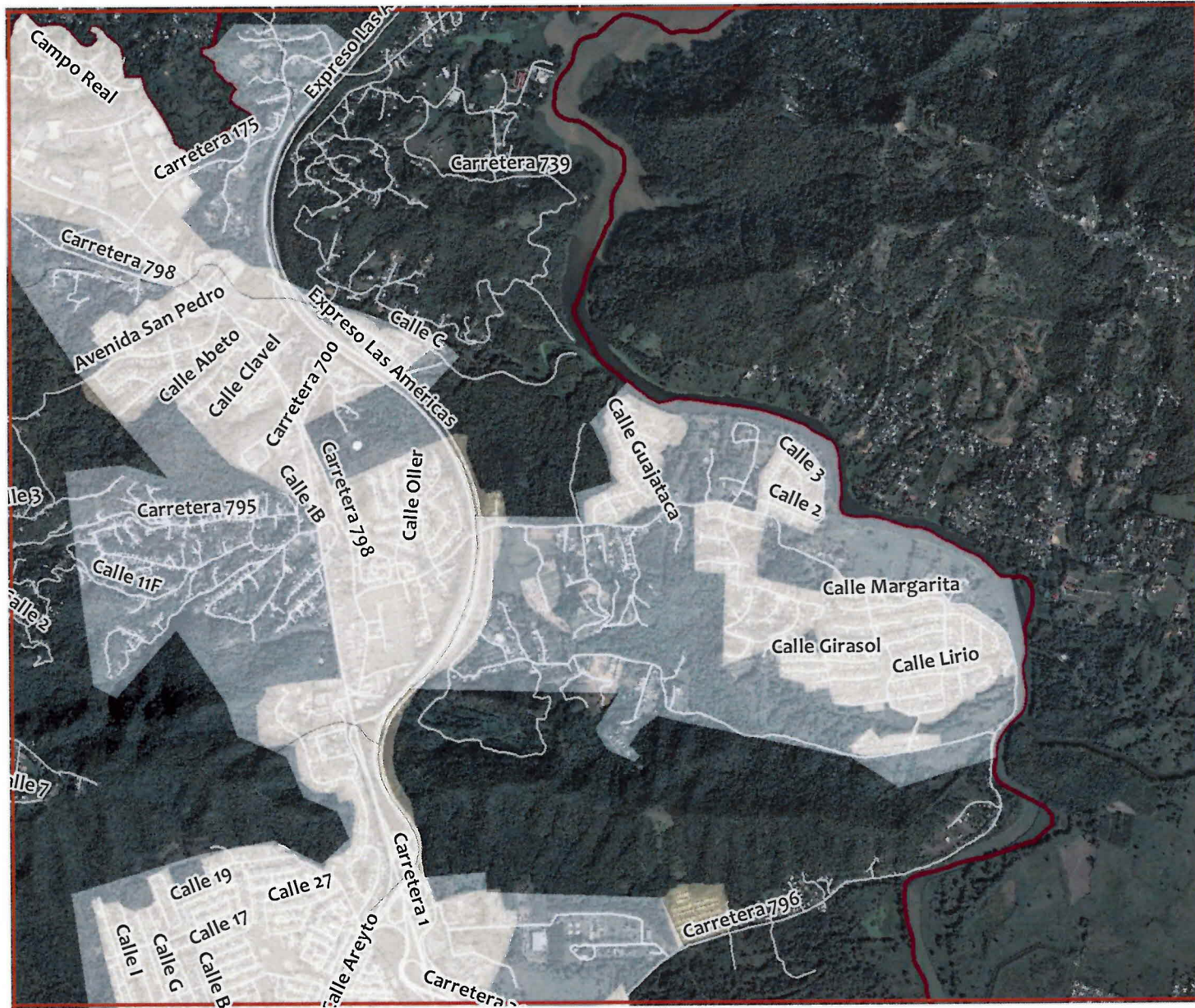
0 0.15 0.3 0.6 Miles

Grid A1

Legend

-  Grids
-  MS4 Boundaries
-  Urban Areas
-  Calles y caminos
-  Caguas

NPDES No. PRR 40001 Location Map



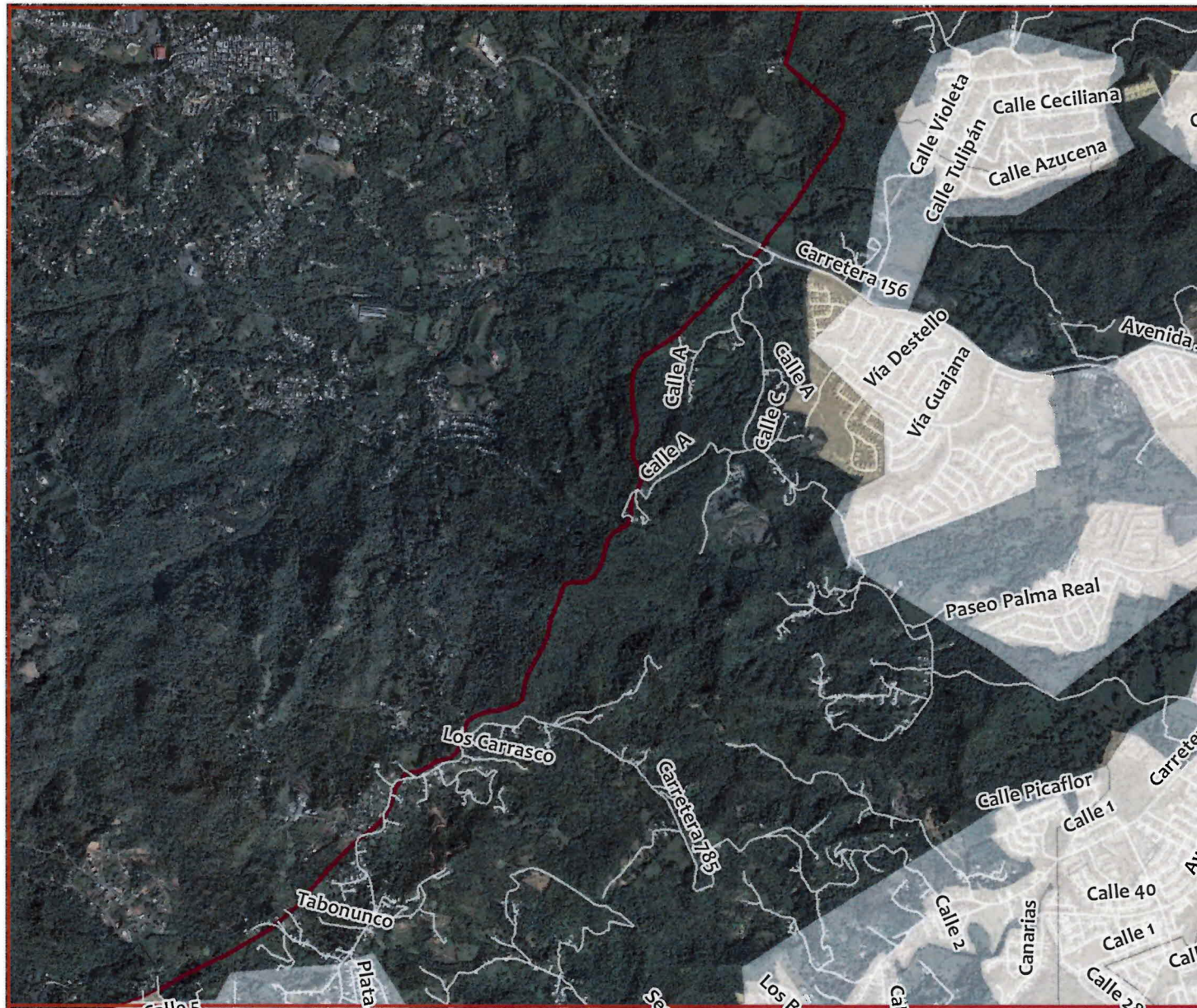
Grid A2



Legend

- Grids
- MS4 Boundaries
- Urban Areas
- Calles y caminos
- Caguas

NPDES No. PRR 40001 Location Map



Grid B1

Legend

- Grids
- MS4 Boundaries
- Urban Areas
- Calles y caminos
- Caguas

NPDES No. PRR 40001 Location Map



Grid B2

Legend

- Grids
- MS4 Boundaries
- Urban Areas
- Calles y caminos
- Caguas

NPDES No. PRR 40001 Location Map



Grid C1

- Legend**
-  Grids
 -  MS4 Boundaries
 -  Urban Areas
 -  Calles y caminos
 -  Caguas

NPDES No. PRR 40001 Location Map



Legend

- Grids
- MS4 Boundaries
- Urban Areas
- Calles y caminos
- Caguas

[Handwritten signature]

APPENDIX B

OUTFALLS MAPS NPDES ZONE 1



Approved by the CEE-SA-16-921.



NPDES No. PRR 40001
 Zone 1 Outfalls Map



- Outfalls
- Rivers and Streams
- Adjoining Municipality



0 150 300 600 900 1,200
 Meters

1:35,000



Commonwealth of Puerto Rico
 Municipality of Caguas
 Planning Office, UICPV
 September 22, 2016; CPR

NPDES No. PRR 40001
Zone 1 Outfalls Map

- Outfalls
- Rivers and Streams
- Adjoining Municipality



0 75 150 300 450 600
Metros

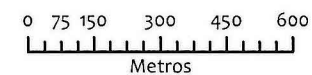
1:16,500



Commonwealth of Puerto Rico
Municipality of Caguas
Planning Office, UIGEV
September 22, 2016; CPR

NPDES No. PRR 40001
Zone 1 Outfalls Map

- Outfalls
- Rivers and Streams
- ▭ Adjoining Municipality



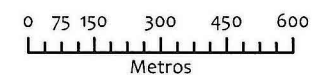
1:16,500



Commonwealth of Puerto Rico
Municipality of Caguas
Planning Office, UIGEV
September 22, 2016; CPR

NPDES No. PRR 40001
Zone 1 Outfalls Map

- Outfalls
- Rivers and Streams
- Adjoining Municipality



1:16,500



Commonwealth of Puerto Rico
Municipality of Caguas
Planning Office, UIGEV
September 22, 2016; CPR



NPDES No. PRR 40001
Zone 1 Outfalls Map

- Outfalls
- Rivers and Streams
- ▭ Adjoining Municipality



0 75 150 300 450 600
Metros

1:16,500



Commonwealth of Puerto Rico
Municipality of Caguas
Planning Office, UIGEV
September 22, 2016; CPR