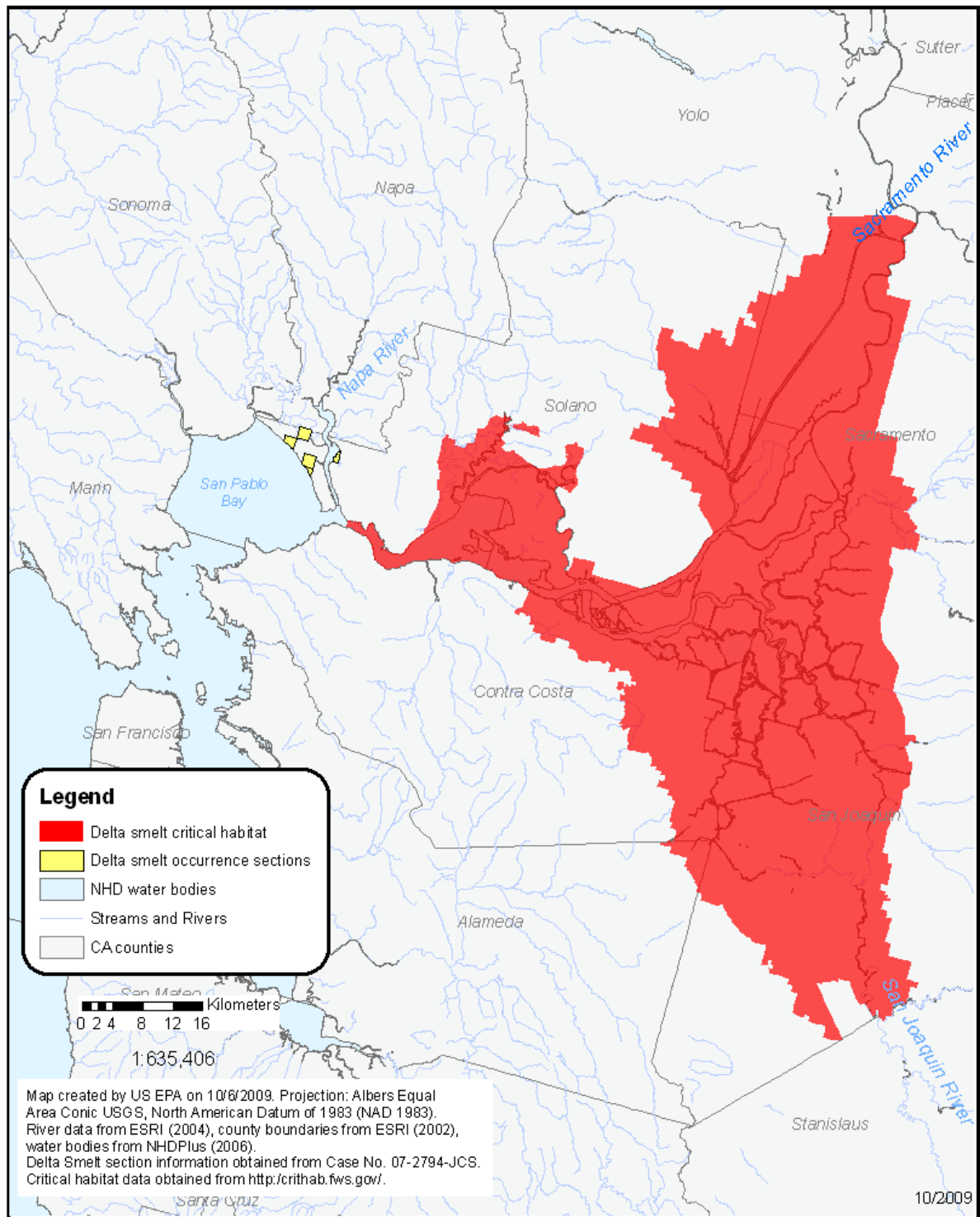


**APPENDIX E: Species Range and Designated Critical Habitat Maps for the DS, TG, SFGS, VERB, CFWS, CCR, CTS-CC, CTS-SC, CTS-SB and BCB.**

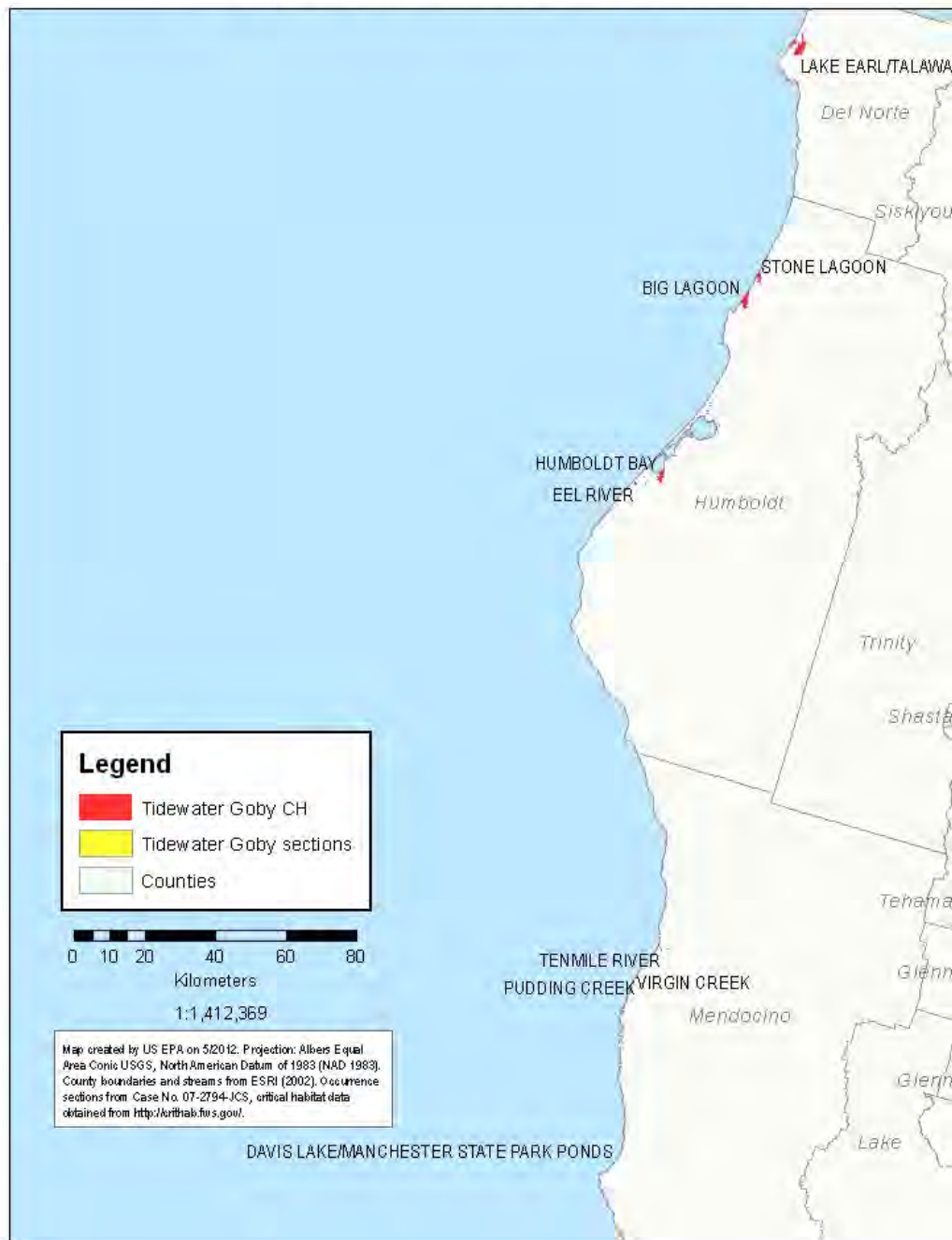
The geographic distribution and locations of the SFB species are based on three sources of data: critical habitat, occurrence sections obtained from USFWS and from *Center for Biological Diversity (CBD) vs. EPA et al.* (Case No. 07-2794-JCS), and distribution information that is largely from Recovery Plans. **Figures E-1** through **E-12** represent the habitat range for the following species: Delta Smelt (DS), Tidewater Goby (TG), San Francisco Garter Snake (SFGS), Valley Elderberry Beetle (VERB), California Freshwater Shrimp (CFWS), California Clapper Rail (CCR), California Tiger Salamander (all three DPSs: CTS-CC, CTS-SC, and CTS-SB), and Bay Checkerspot Butterfly (BCB).

## Delta Smelt Habitat



A. Figure E-1 Delta Smelt critical habitat and occurrence sections.

## Tidewater Goby North Coast Critical Habitat Areas and Sections



**Figure E-2 Tidewater Goby critical habitat and occurrence sections in the California North Coast (1 of 5)**

## Tidewater Goby Greater Bay Area Critical Habitat Areas and Sections



**Figure E-3 Tidewater Goby critical habitat and occurrence sections in the Greater San Francisco Bay area (2 of 5)**

## Tidewater Goby Central Coast Critical Habitat Areas



**Figure E-4 Tidewater Goby critical habitat and occurrence sections in the California Central Coast (3 of 5)**

## Tidewater Goby Conception Critical Habitat Areas



**Figure E-5 Tidewater Goby critical habitat and occurrence sections in the Conception area (4 of 5)**

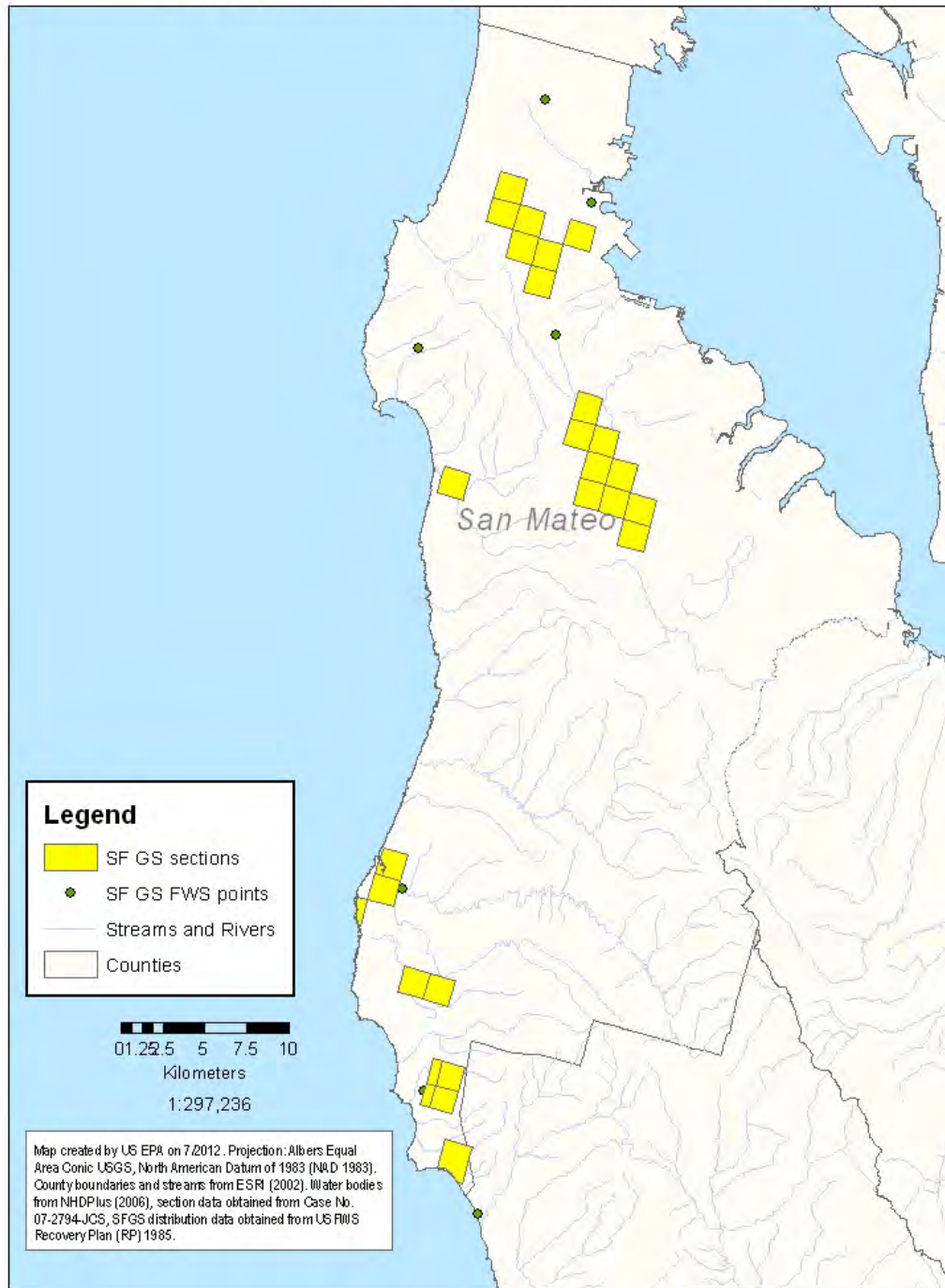


## Tidewater Goby LA/Ventura Critical Habitat Areas



**Figure E-6 Tidewater Goby critical habitat and occurrence sections in the Los Angeles/Ventura area (5 of 5).**

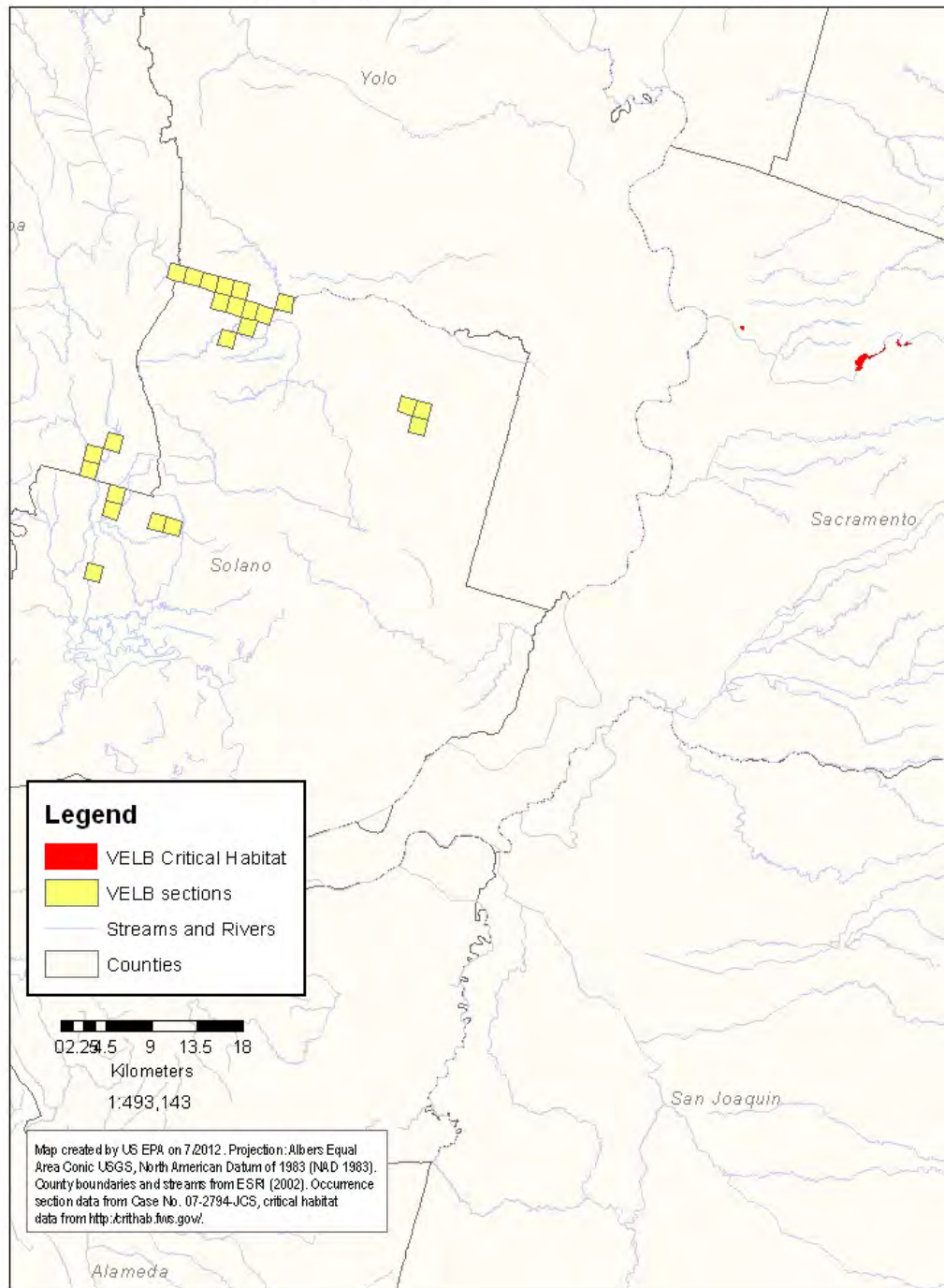
## San Francisco Garter Snake Habitat Areas



**Figure E-7 San Francisco Garter Snake sections and survey point areas.**

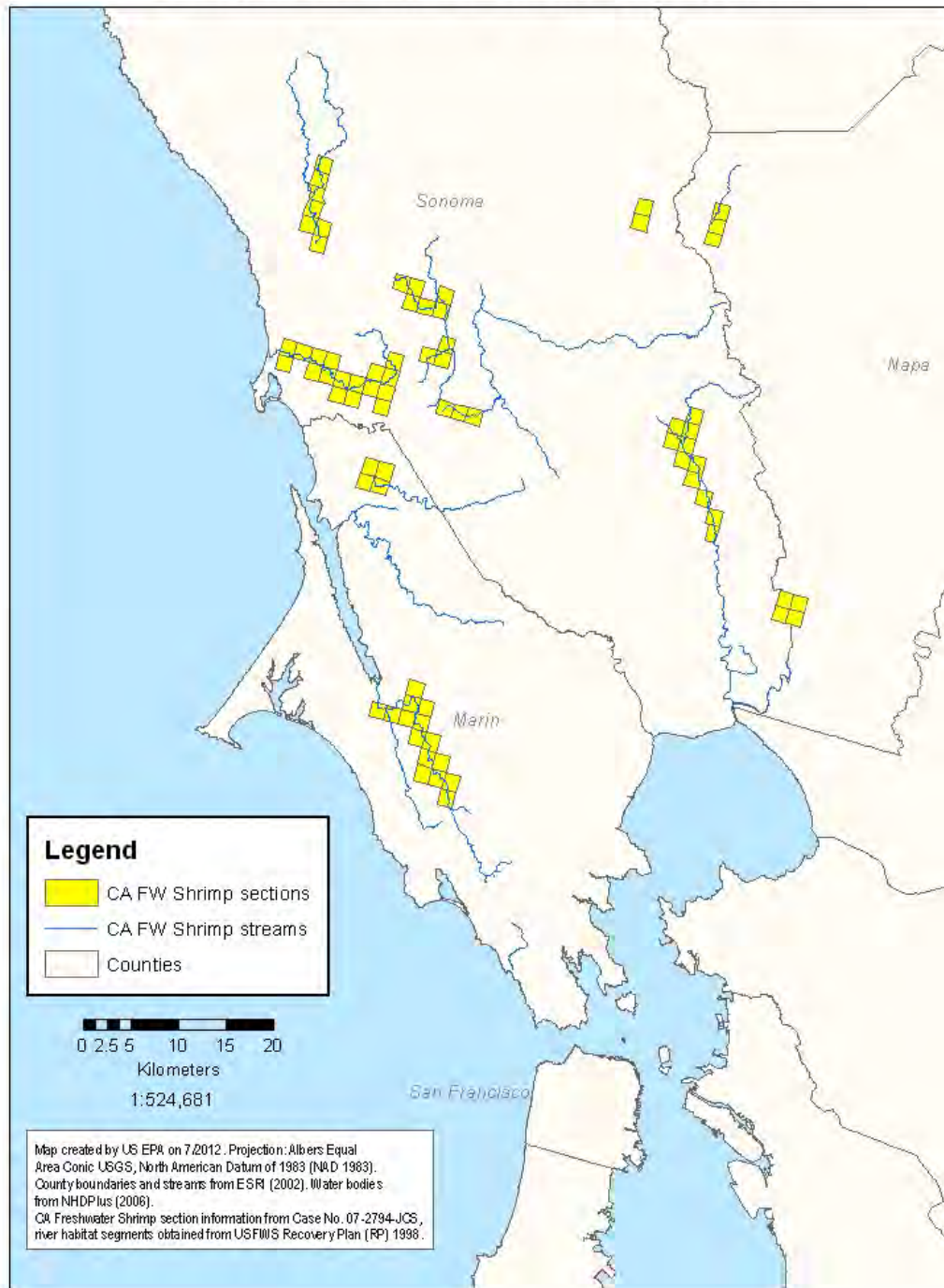


## Valley Elderberry Longhorn Beetle Habitat Areas



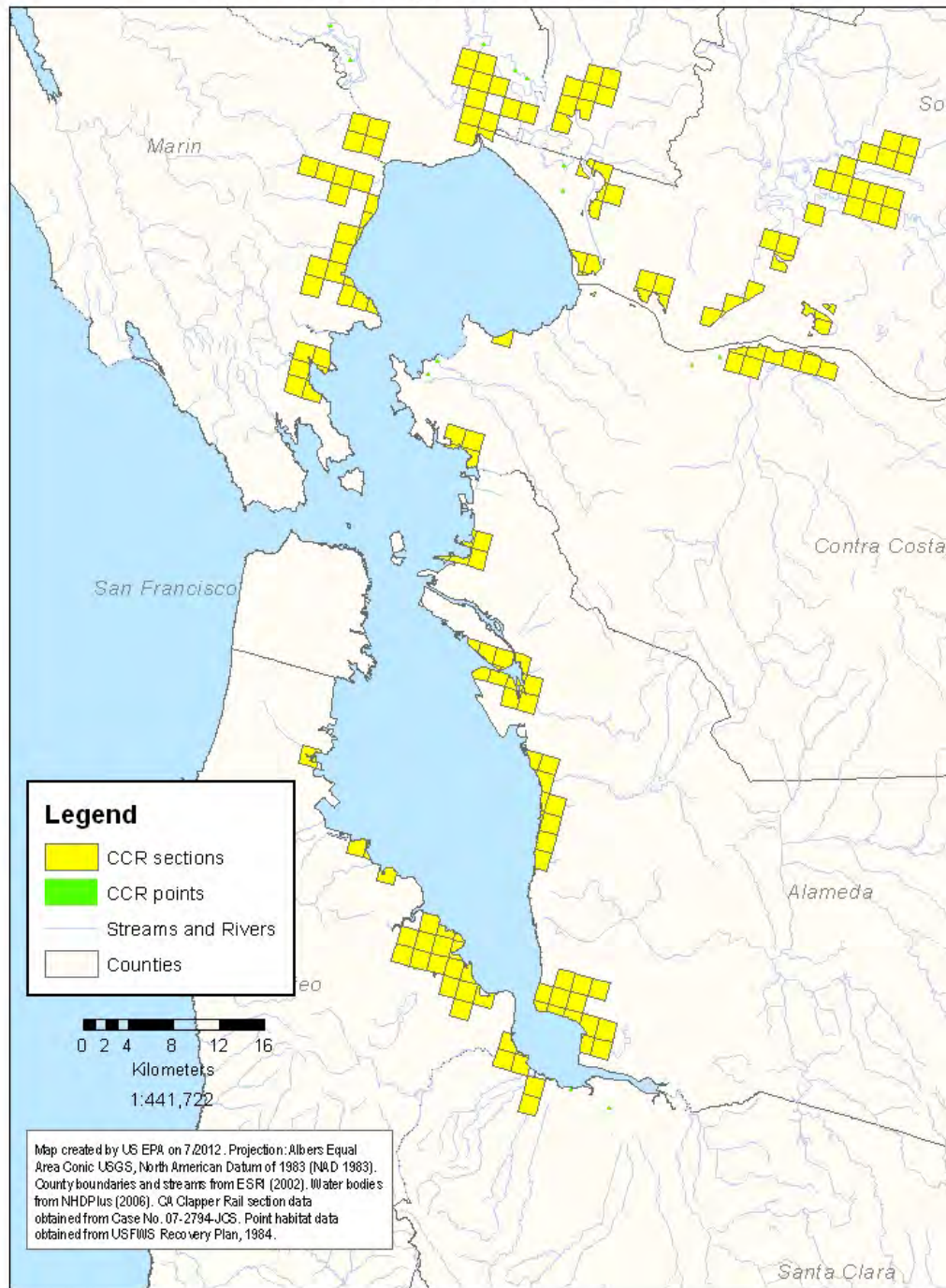
**Figure E-8 Valley Elderberry Longhorn Beetle critical habitat and occurrence sections.**

## California Freshwater Shrimp Habitat Areas



**Figure E-9 California Freshwater Shrimp occurrence sections and stream habitat areas.**

## California Clapper Rail Habitat Areas



**Figure E-10 California Clapper Rail sections and survey point areas.**



**Legend**

- CA Tiger Salamander CH
- CA Tiger Salamander (sections)
- CA counties

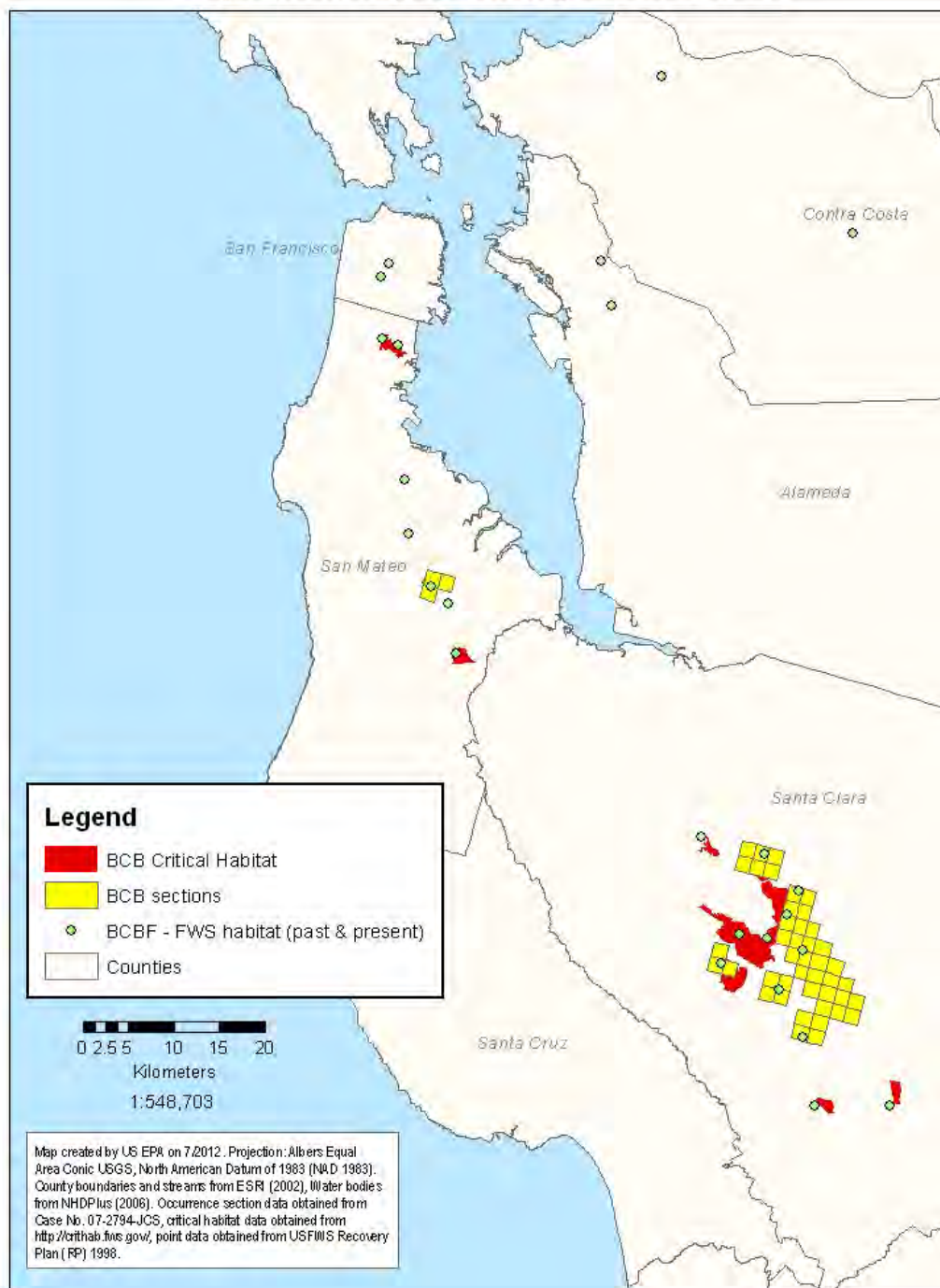
0 10 20 30 40 Kilometers  
1:1,753,453

Map Created by USEPA on 10/06/2011. Projection: Albers Equal Area Conic USGS, North American Datum 1983.  
CTS occurrence section data from Case No. 07-2794-JCS,  
critical habitat data from <http://crlhab.ms.gov>.

10/2011

E. 12

## Bay Checkerspot Butterfly Habitat Areas



**Figure E-12 Bay Checkerspot Butterfly critical habitat and occurrence sections.**

## References for GIS Maps

Center for Biological Diversity vs EPA Case No. 07-2794-JCS.

ESRI Data and Maps DVD, 2002. (1:24,000). Available online at [www.esri.com](http://www.esri.com).

*Sacramento San-Joaquin Delta Fact Sheet*. California Department of Water Resources. Available online at <http://www.water.ca.gov/deltainit/docs/factsheet.pdf>

Simley, J.D., Carswell Jr., W.J., 2009, *The National Map—Hydrography*: U.S. Geological Survey Fact Sheet 2009-3054, 4 p. Available online at [nhd.usgs.gov](http://nhd.usgs.gov).

### ***Delta Smelt***

U.S. Fish and Wildlife Service. 1995. *Sacramento-San Joaquin Delta Native Fishes Recovery Plan*. U.S. Fish and Wildlife Service, Portland, Oregon. Available online at [http://ecos.fws.gov/docs/recovery\\_plan/961126.pdf](http://ecos.fws.gov/docs/recovery_plan/961126.pdf). (Accessed 24 November, 2009).

### ***Delta Smelt, CTS, Valley Elderberry Longhorn Beetle, Bay Checkerspot Butterfly, Alameda Whipsnake, Tidewater Goby***

U.S. Fish and Wildlife Service (USFWS). *Critical habitat maps (Delta Smelt, Calif. Tiger Salamander, Valley Elderberry Longhorn Beetle, Bay Checkerspot Butterfly, Alameda Whipsnake, Tidewater Goby)*. Available online at: <http://criticalhabitat.fws.gov>. (Accessed 24 September 2009).

### ***Salt Marsh Harvest Mouse, Calif Clapper Rail***

U.S. Fish and Wildlife Service (USFWS). 1984. *Salt Marsh Harvest Mouse/California Clapper Rail Recovery Plan*. Available online at [http://ecos.fws.gov/docs/recovery\\_plan/841116.pdf](http://ecos.fws.gov/docs/recovery_plan/841116.pdf). (Accessed 24 November 2009).

### ***SF Garter Snake***

U.S. Fish and Wildlife Service (USFWS), 1985. *Recovery Plan for the San Francisco Garter Snake (Thamnophis Sirtalis Tetrataenia)*. U.S. Fish and Wildlife Service, Portland, Oregon. 77pp. Available online at [http://ecos.fws.gov/docs/recovery\\_plan/850911.pdf](http://ecos.fws.gov/docs/recovery_plan/850911.pdf) (Accessed 24 November 2009).

### ***CA FW Shrimp***

U.S. Fish and Wildlife Service (USFWS), 1998. *California Freshwater Shrimp (Syncaris pacifica Holmes) Recovery Plan*. U.S. Fish and Wildlife Service, Portland, Oregon. 94pp. Available online at [http://ecos.fws.gov/docs/recovery\\_plan/980731a.pdf](http://ecos.fws.gov/docs/recovery_plan/980731a.pdf) (Accessed 24 November 2009).

### ***Bay Checkerspot Butterfly***

U.S. Fish and Wildlife Service (USFWS), 1998. *Recovery Plan for Serpentine Soil Species of the San Francisco Bay Area*. Portland, Oregon. 330+ pp. Available online at [http://ecos.fws.gov/docs/recovery\\_plan/980930c\\_v2.pdf](http://ecos.fws.gov/docs/recovery_plan/980930c_v2.pdf). (Accessed 27 November 2009 for the Bay Checkerspot Butterfly).

### ***Tidewater Goby***

U.S. Fish and Wildlife Service. 2005. *Recovery Plan for the Tidewater Goby (Eucyclogobius newberryi)*. U.S. Fish and Wildlife Service, Portland, Oregon. Vi + 199 pp. Available online at [http://ecos.fws.gov/docs/recovery\\_plan/051207.pdf](http://ecos.fws.gov/docs/recovery_plan/051207.pdf) (Accessed 27 November 27, 2009).