

## Appendix L. Tidewater Goby Habitat Maps Depicting Potential Use Areas and its Overlap

### Initial Area of Concern for Methomyl

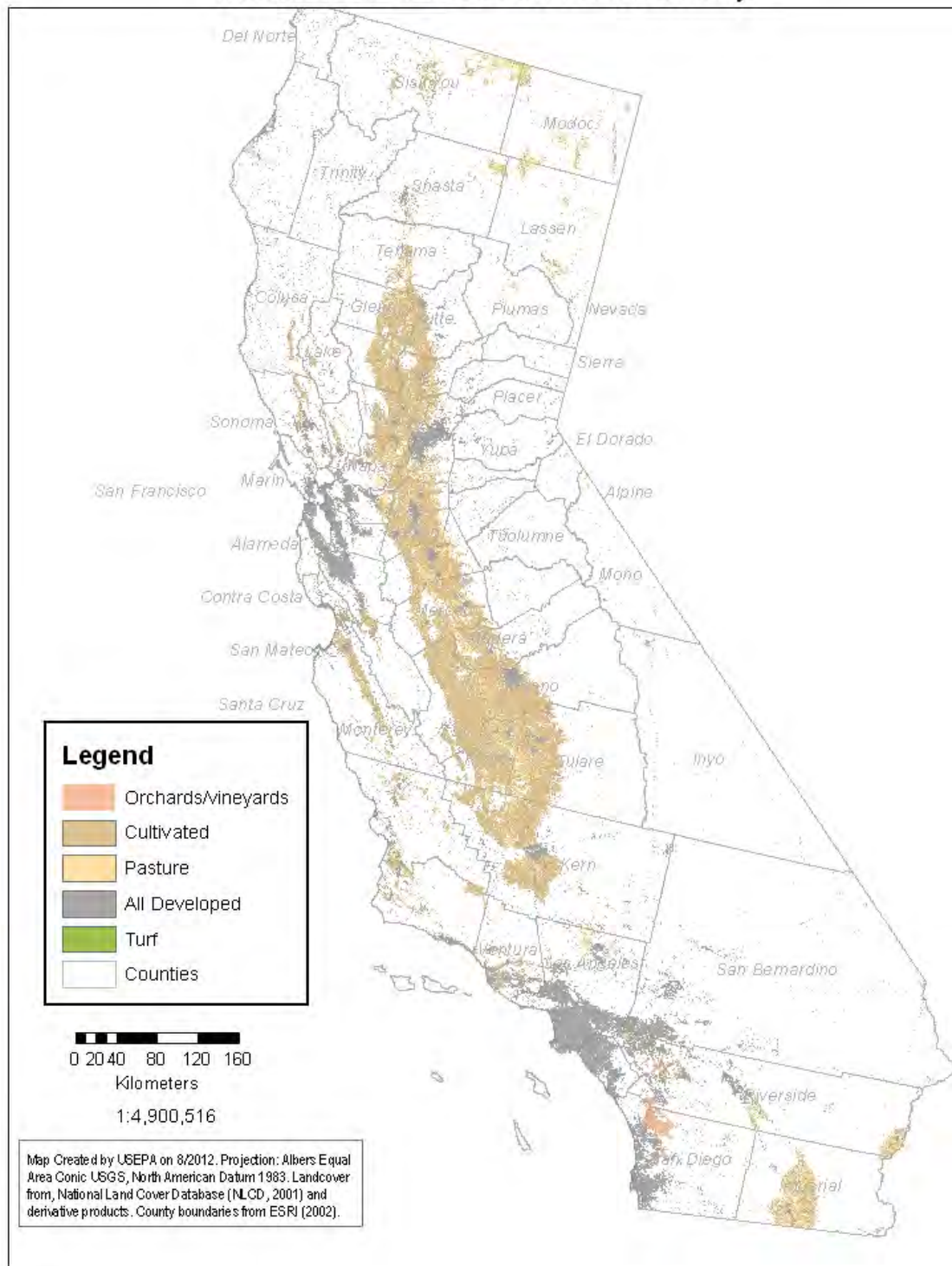


Figure 1 NLCD footprint map depicting potential use sites for methomyl.

## Tidewater Goby Index Map



Figure 2 Tidewater Goby index map.

# Tidewater Goby Map 1 Habitat with Potential Use Area and Overlap

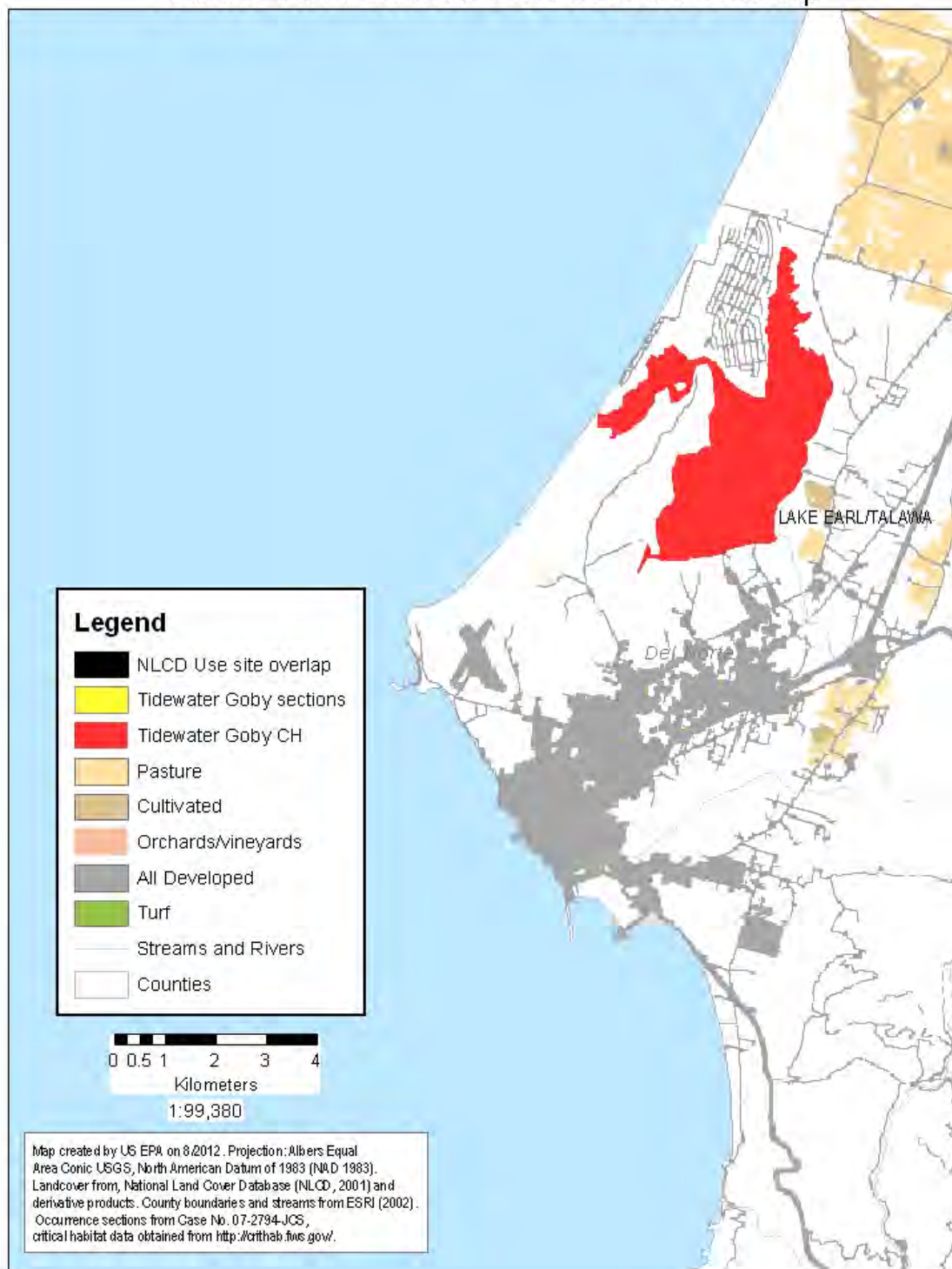


Figure 3 Tidewater Goby index map 1 depicting Lake Earl/Talawa critical habitat.

## Tidewater Goby Map 2 Habitat with Potential Use Area and Overlap

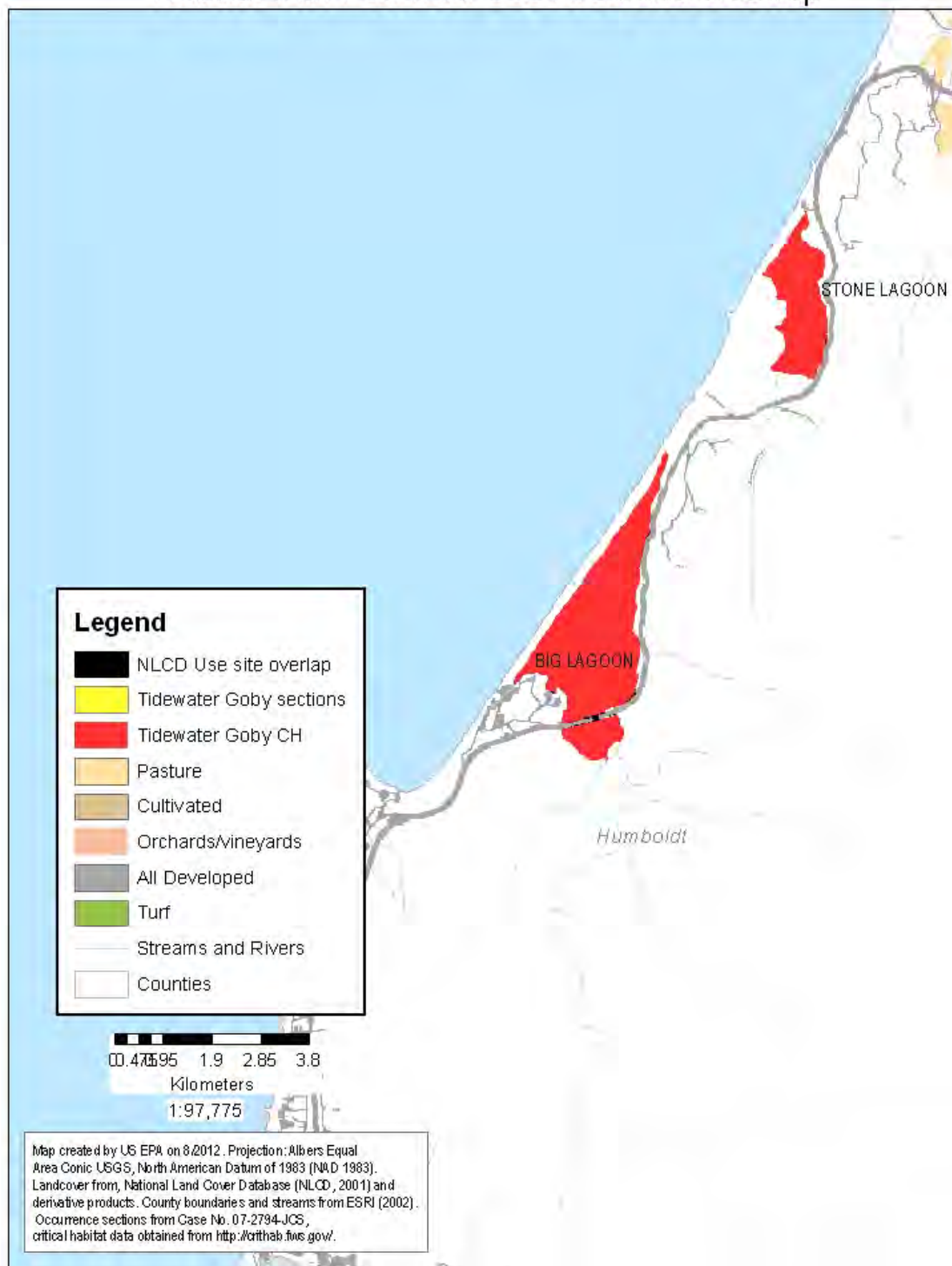


Figure 4 Tidewater Goby index map 2 depicting Stone Lagoon and Big Lagoon critical habitat.



### Tidewater Goby Map 3 Habitat with Potential Use Area and Overlap

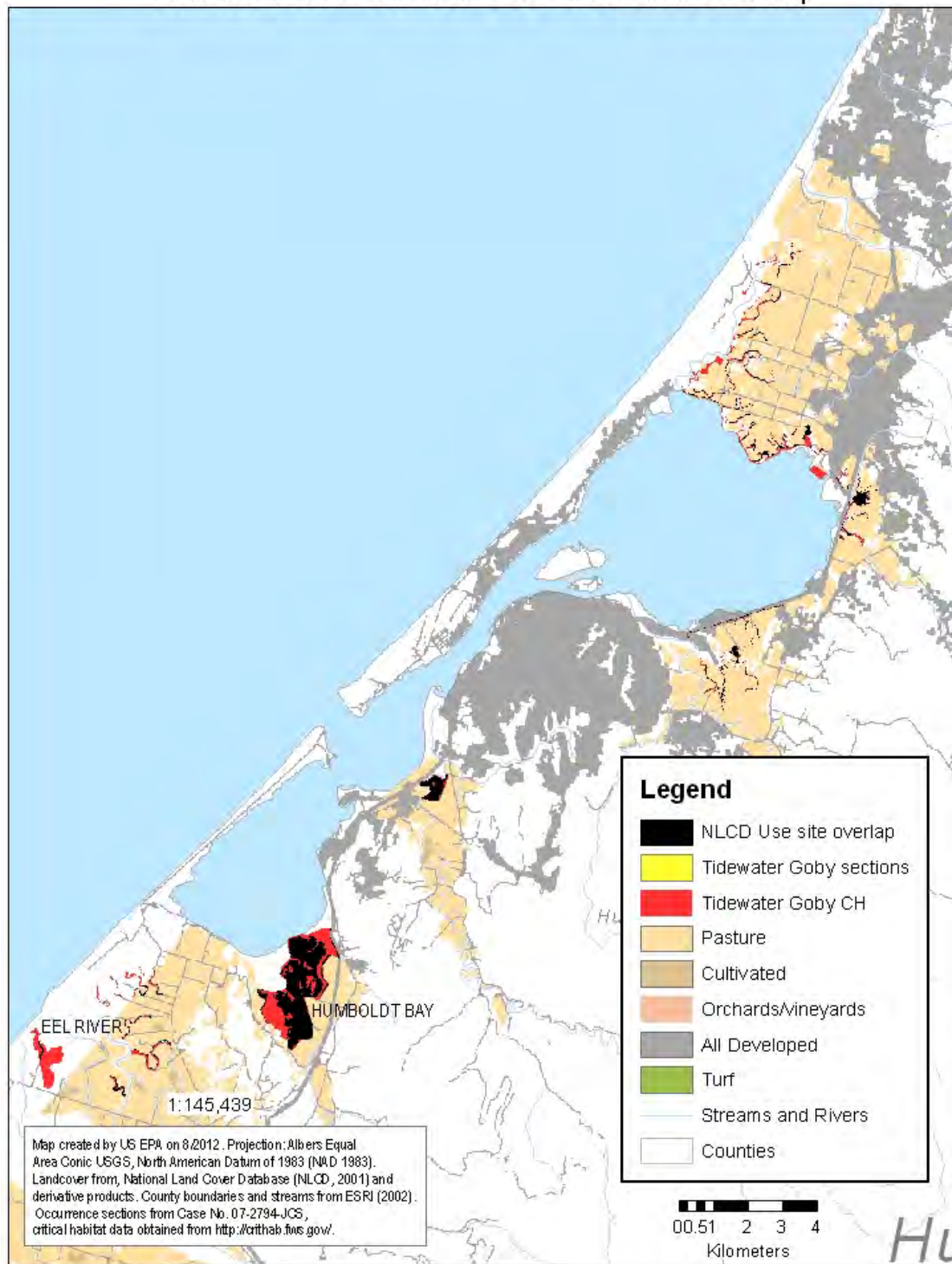


Figure 5 Tidewater Goby index map 3 depicting Humboldt Bay and Eel River critical habitat. Potential use overlap is apparent.

# Tidewater Goby Map 4 Habitat with Potential Use Area and Overlap

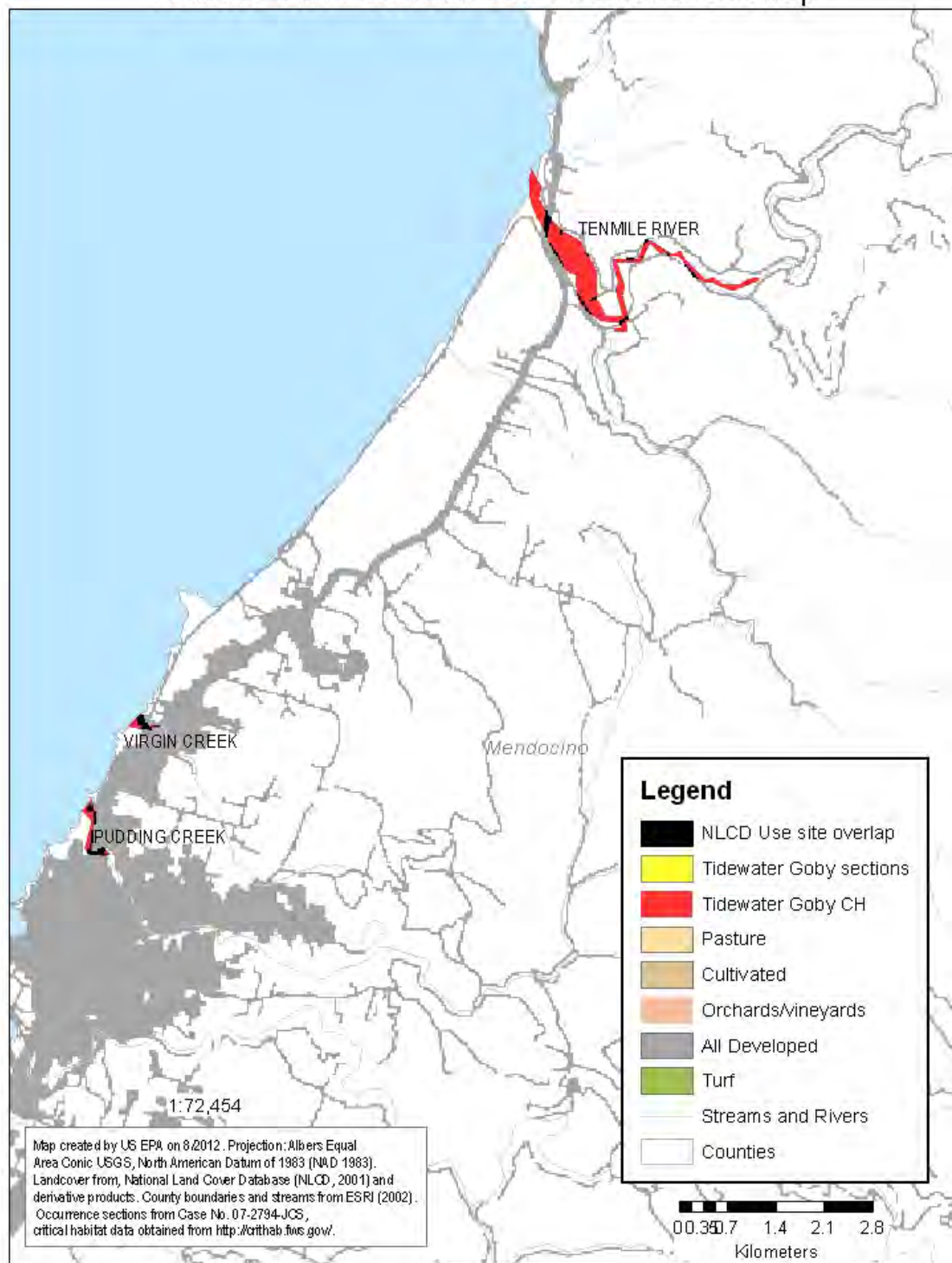


Figure 6 Tidewater Goby index map 4 depicting Tenmile River, Virgin Creek and Pudding Creek critical habitat. Potential use overlap is apparent.

## Tidewater Goby Map 5 Habitat with Potential Use Area and Overlap

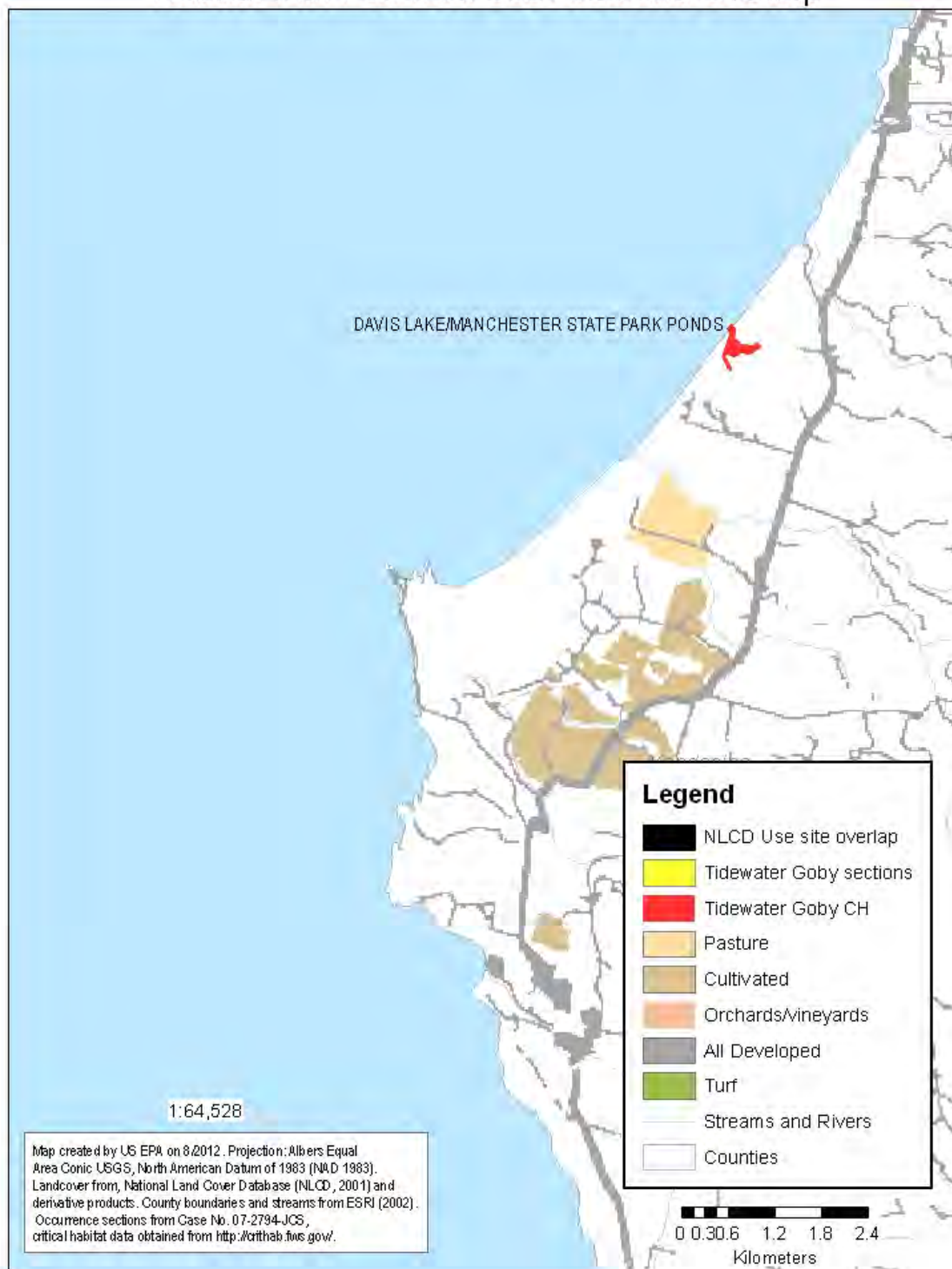
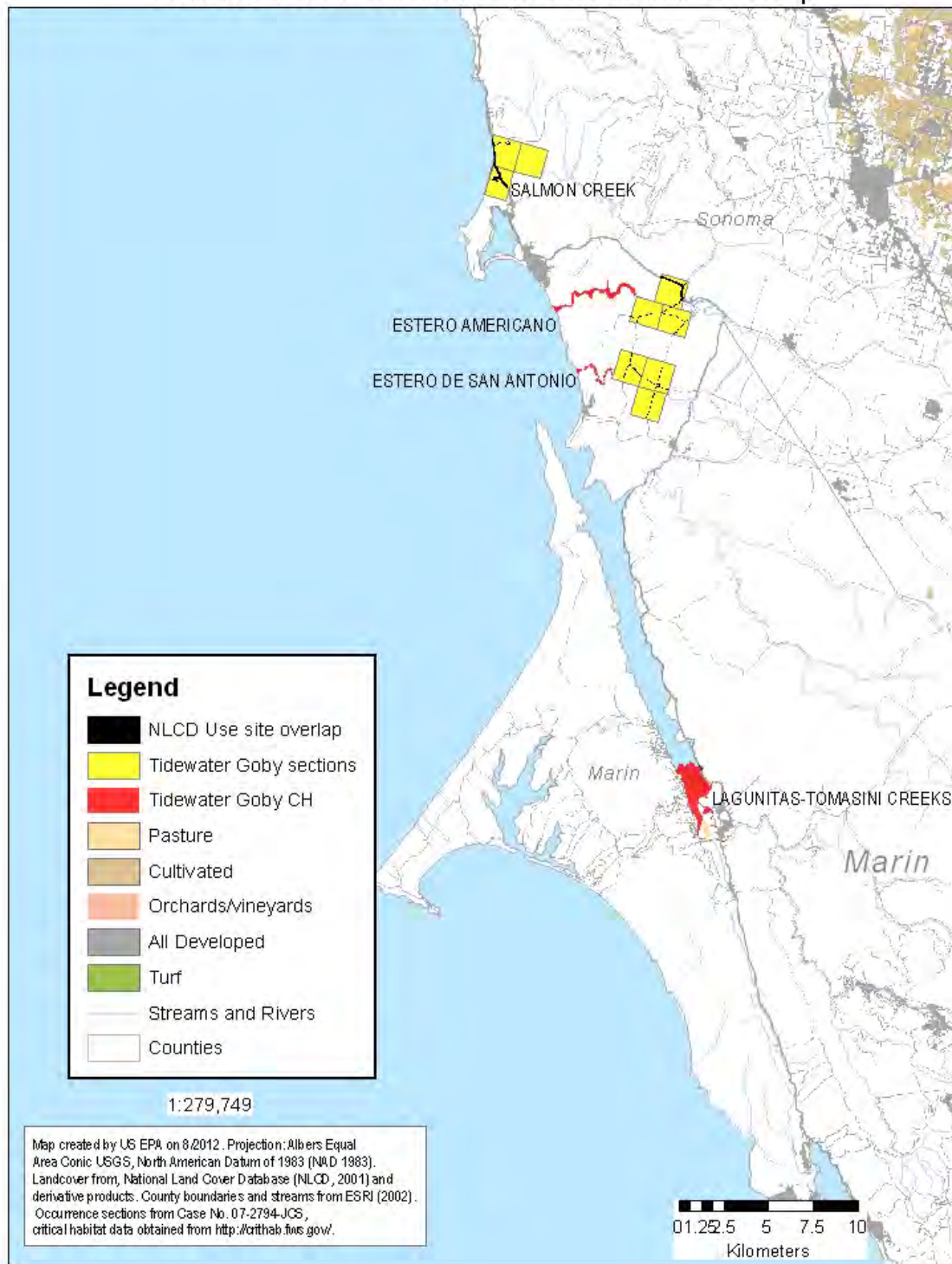


Figure 7 Tidewater Goby index map 5 depicting Davis Lake critical habitat.



## Tidewater Goby Map 6 Habitat with Potential Use Area and Overlap



**Figure 8 Tidewater Goby index map 6 depicting Salmon Creek to Estero De San Antonio critical habitat with sections. Some potential use area overlap is apparent.**



## Tidewater Goby Map 7 Habitat with Potential Use Area and Overlap

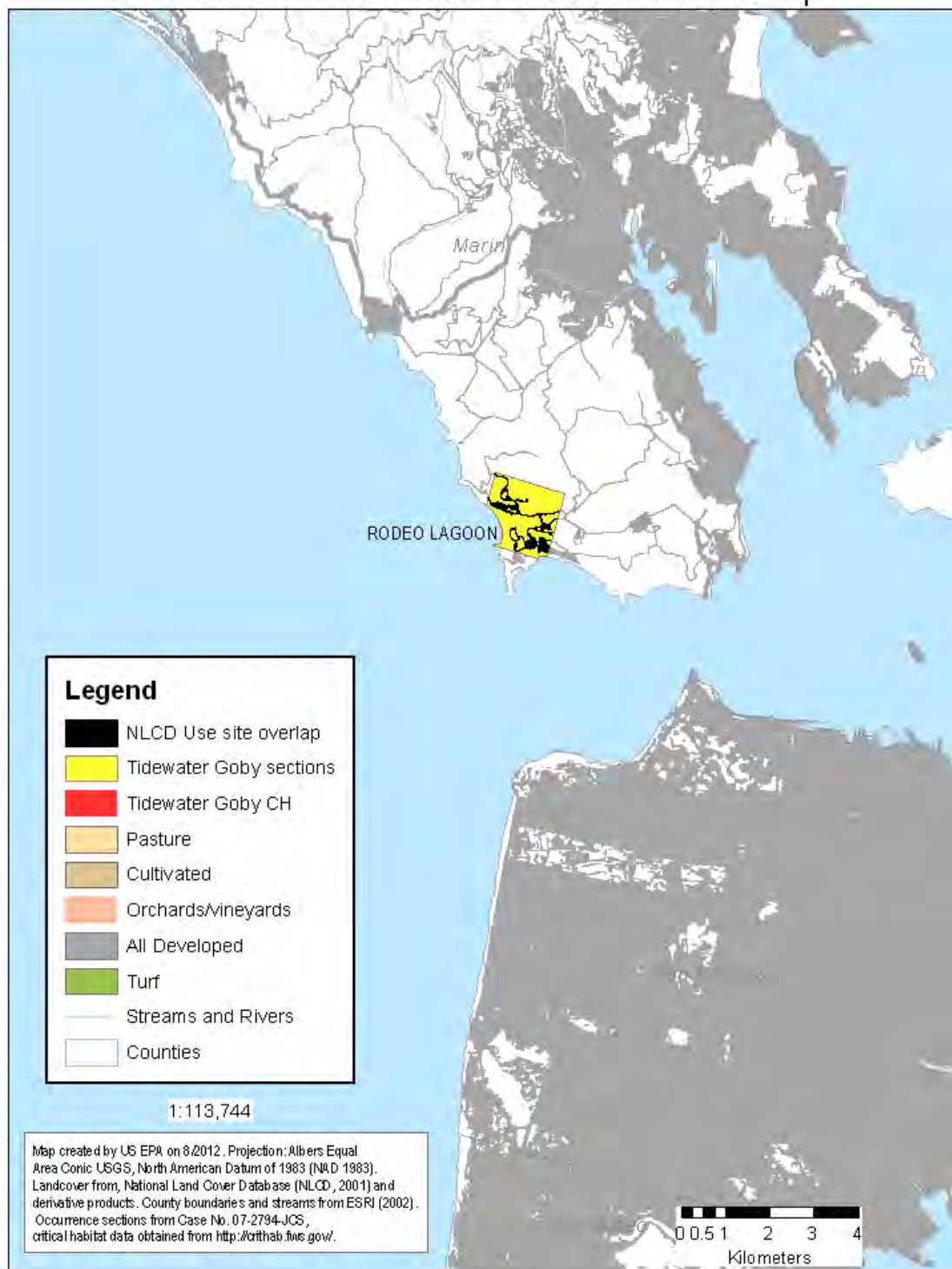
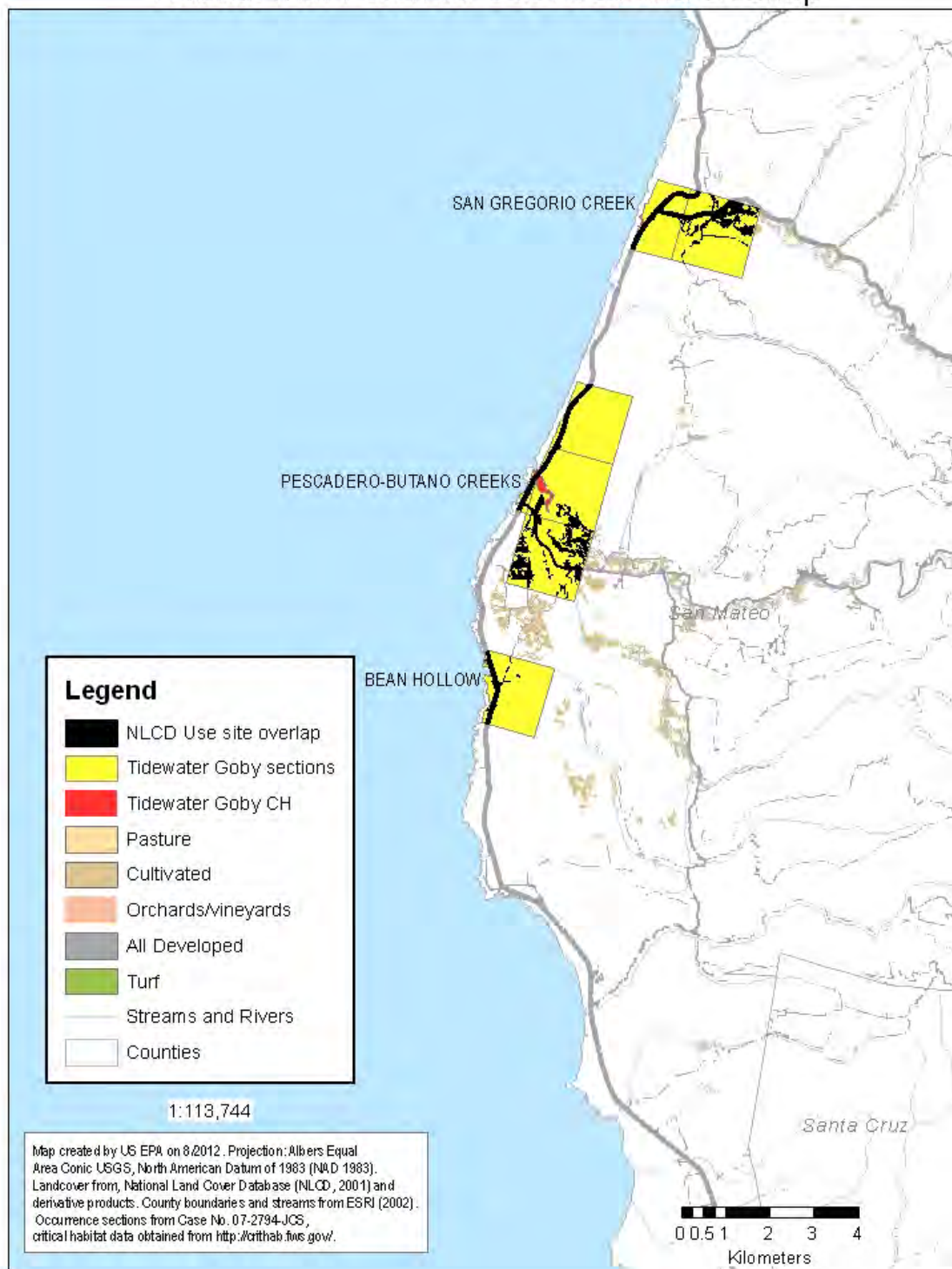


Figure 9 Tidewater Goby index map 7 depicting Rodeo Lagoon sections. Potential use overlap is apparent.

## Tidewater Goby Map 8 Habitat with Potential Use Area and Overlap



**Figure 10** Tidewater Goby index map 8 depicting San Gregorio Creek to Bean Hollow sections. Some overlap with potential use sites is apparent.

# Tidewater Goby Map 9 Habitat with Potential Use Area and Overlap

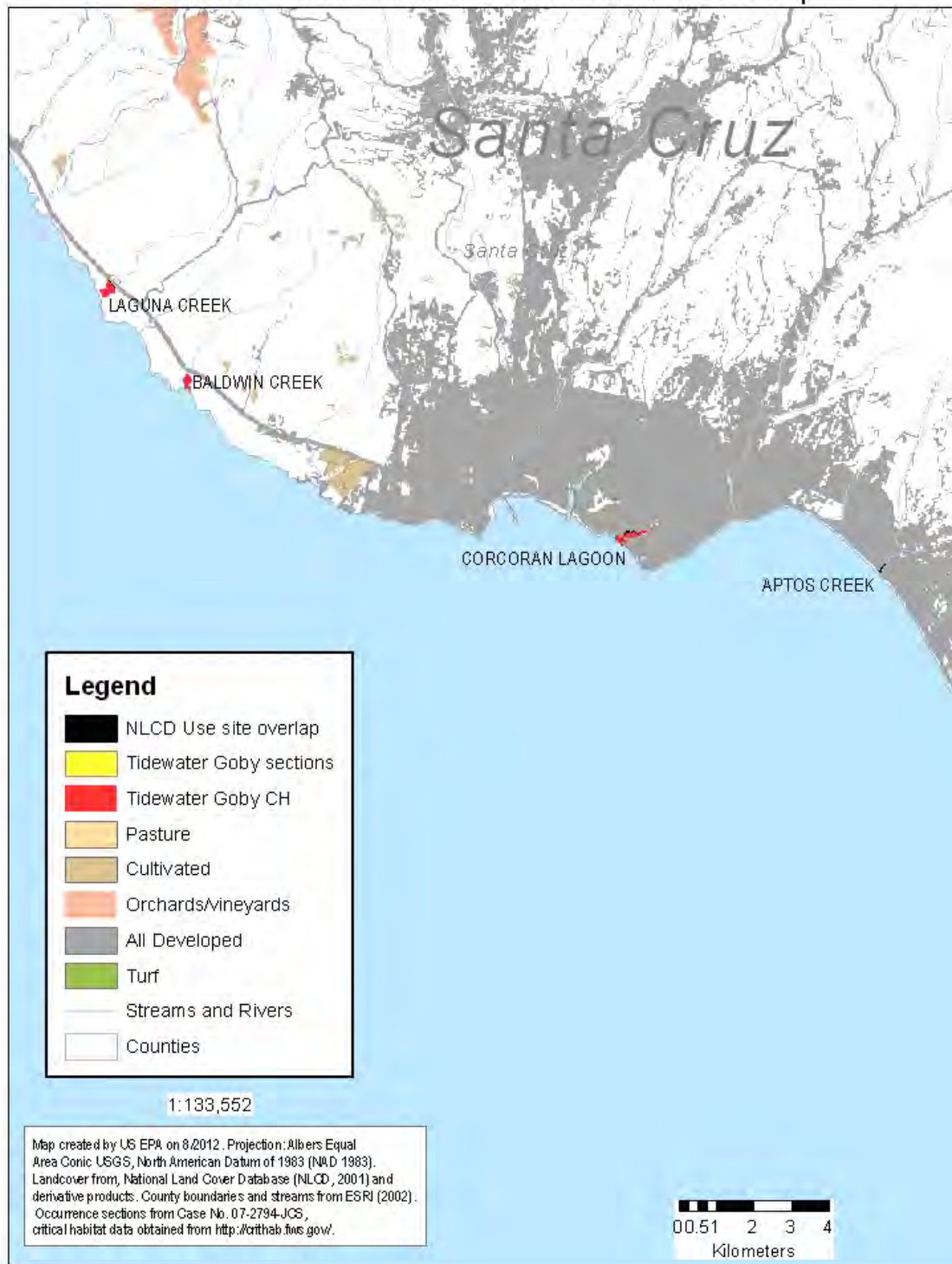


Figure 11 Tidewater Goby index map 9 depicting Laguna Creek to Aptos Creek critical habitat. Some potential use overlap is apparent.



# Tidewater Goby Map 10 Habitat with Potential Use Area and Overlap

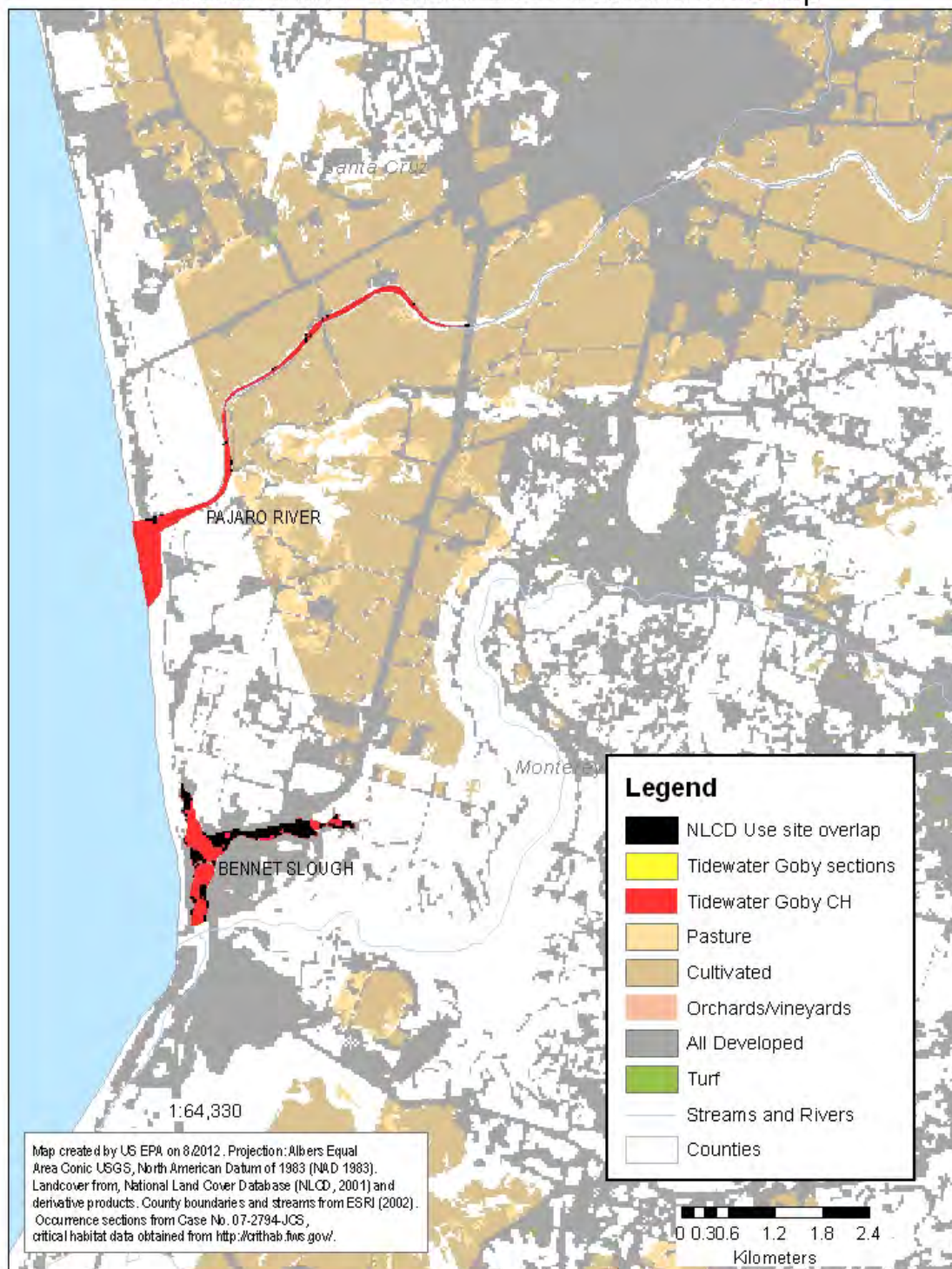


Figure 12 Tidewater Goby index map 10 depicting Pajaro River and Bennet Slough critical habitat. Some potential use overlap is apparent.

# Tidewater Goby Map 11 Habitat with Potential Use Area and Overlap

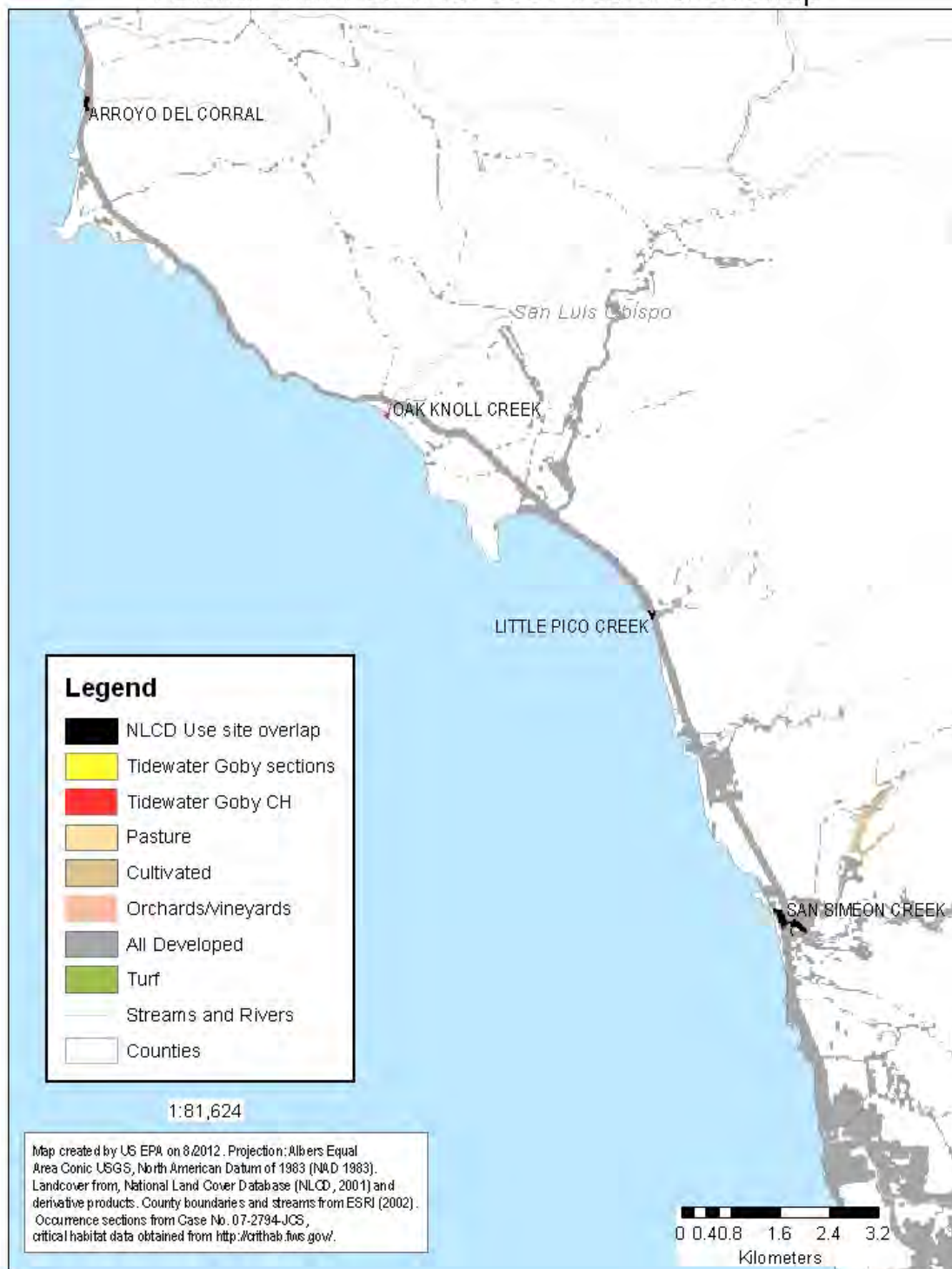


Figure 13 Tidewater Goby index map 11 depicting Arroyo Del Corral to San Simeon Creek critical habitat. Some potential use overlap is apparent.

# Tidewater Goby Map 12 Habitat with Potential Use Area and Overlap



Figure 14 Tidewater Goby index map 12 depicting Villa Creek to San Geronimo Creek critical habitat. Some potential use overlap is apparent.



# Tidewater Goby Map 13 Habitat with Potential Use Area and Overlap

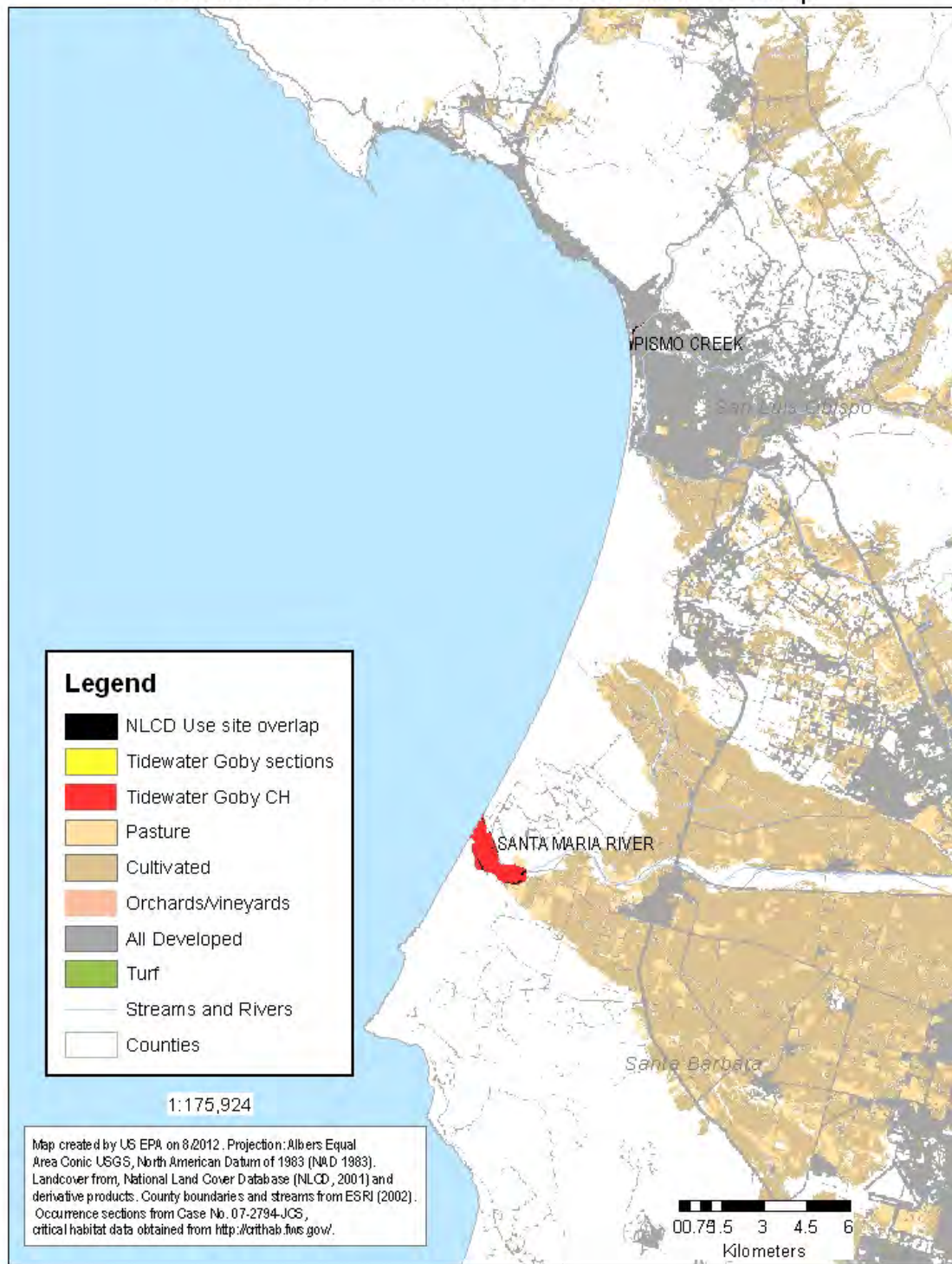


Figure 15 Tidewater Goby index map 13 depicting Pismo Creek to Santa Maria River critical habitat. Some potential use overlap is apparent.

# Tidewater Goby Map 14 Habitat with Potential Use Area and Overlap



Figure 16 Tidewater Goby index map 14 depicting Canada de Las Agujas to Gaviota Creek critical habitat. Some potential use overlap is apparent.

# Tidewater Goby Map 15 Habitat with Potential Use Area and Overlap

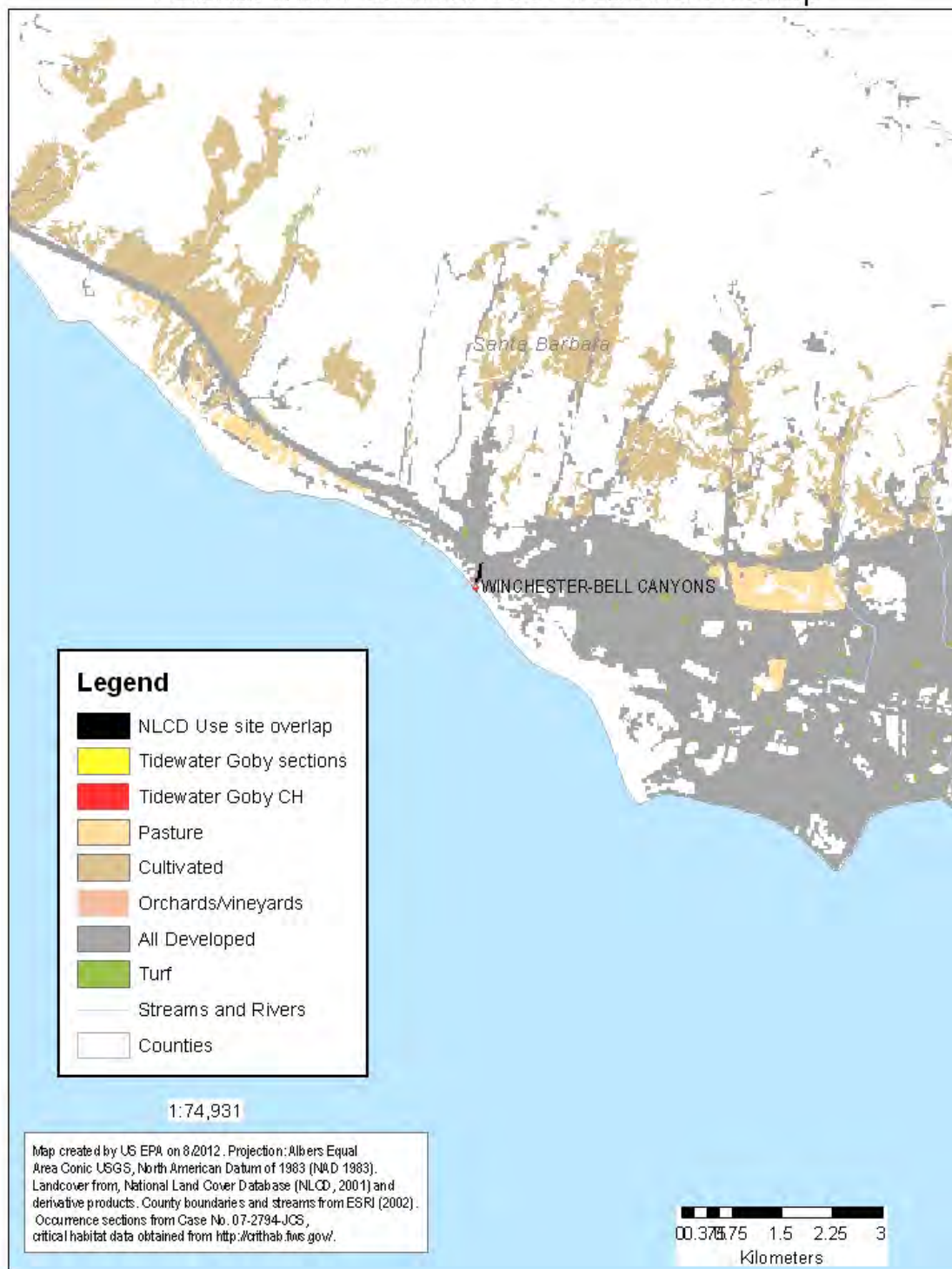
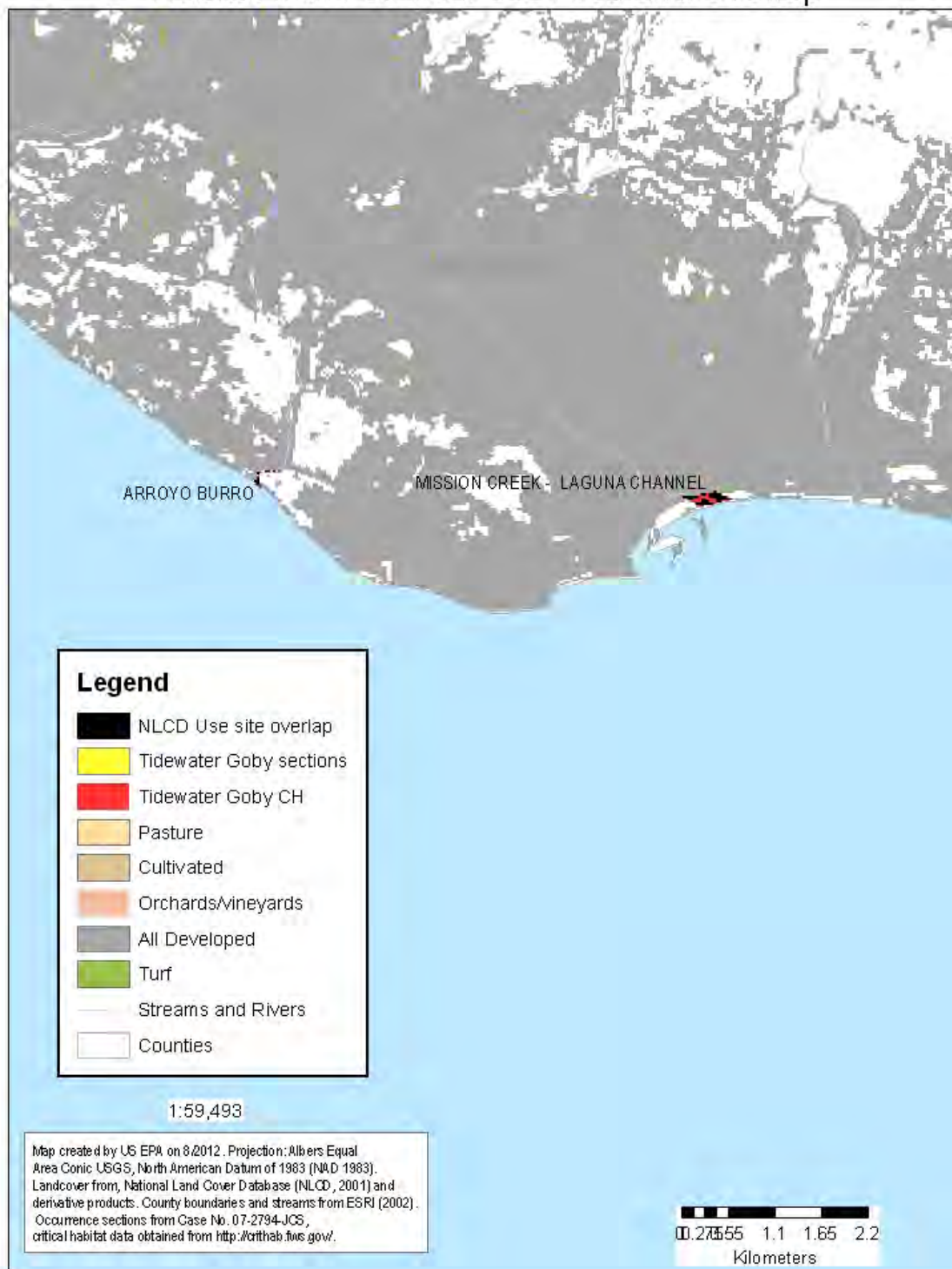


Figure 17 Tidewater Goby index map 15 depicting Winchester-Bell Canyons critical habitat. Some potential use overlap is apparent.



# Tidewater Goby Map 16 Habitat with Potential Use Area and Overlap



**Figure 18** Tidewater Goby index map 16 depicting Arroyo Burro to Mission Creek critical habitat. Some potential use overlap is apparent.

# Tidewater Goby Map 17 Habitat with Potential Use Area and Overlap

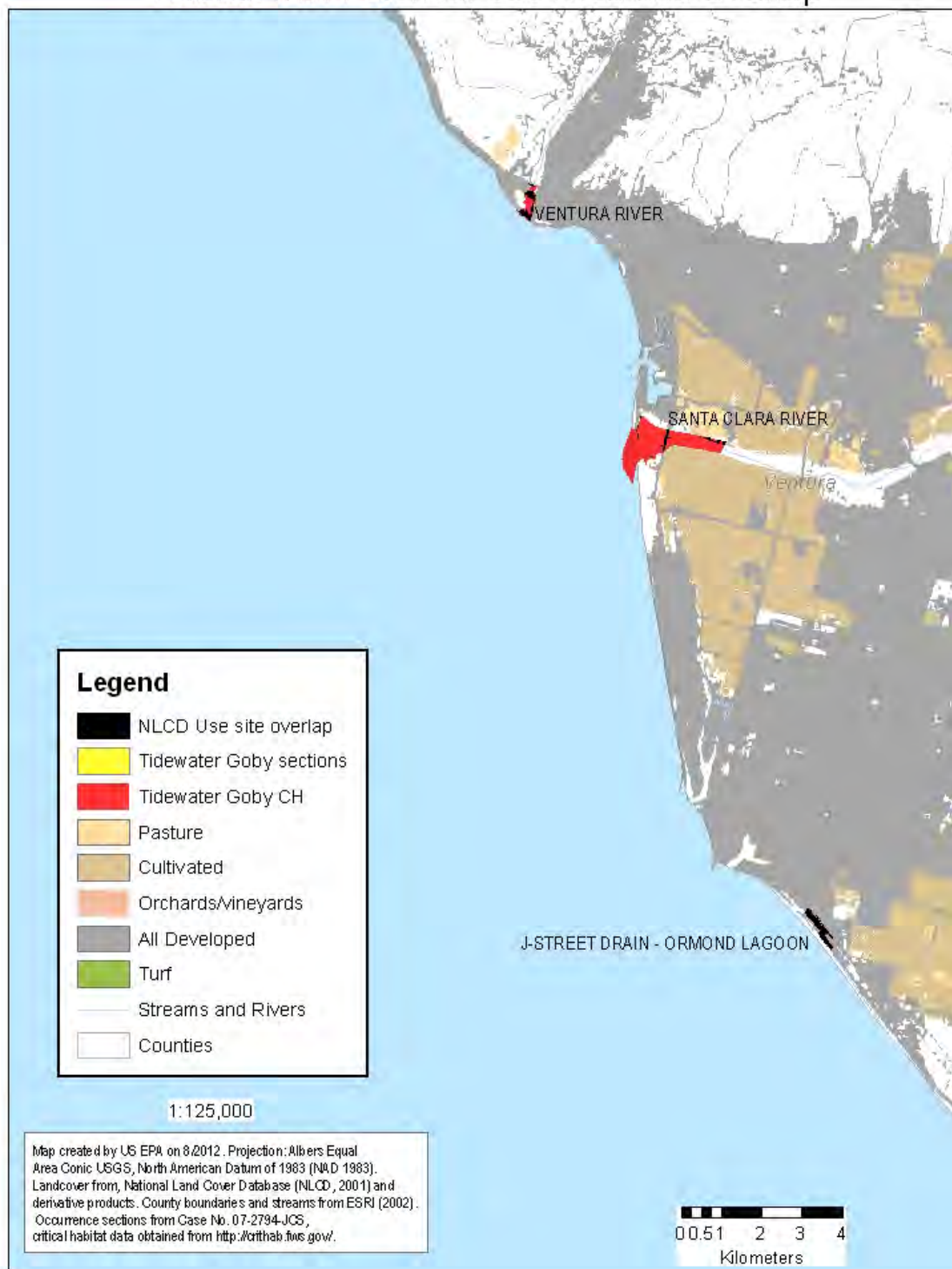


Figure 19 Tidewater Goby index map 17 depicting Ventura River to J-Street Drain critical habitat. Some potential use overlap is apparent.

# Tidewater Goby Map 18 Habitat with Potential Use Area and Overlap

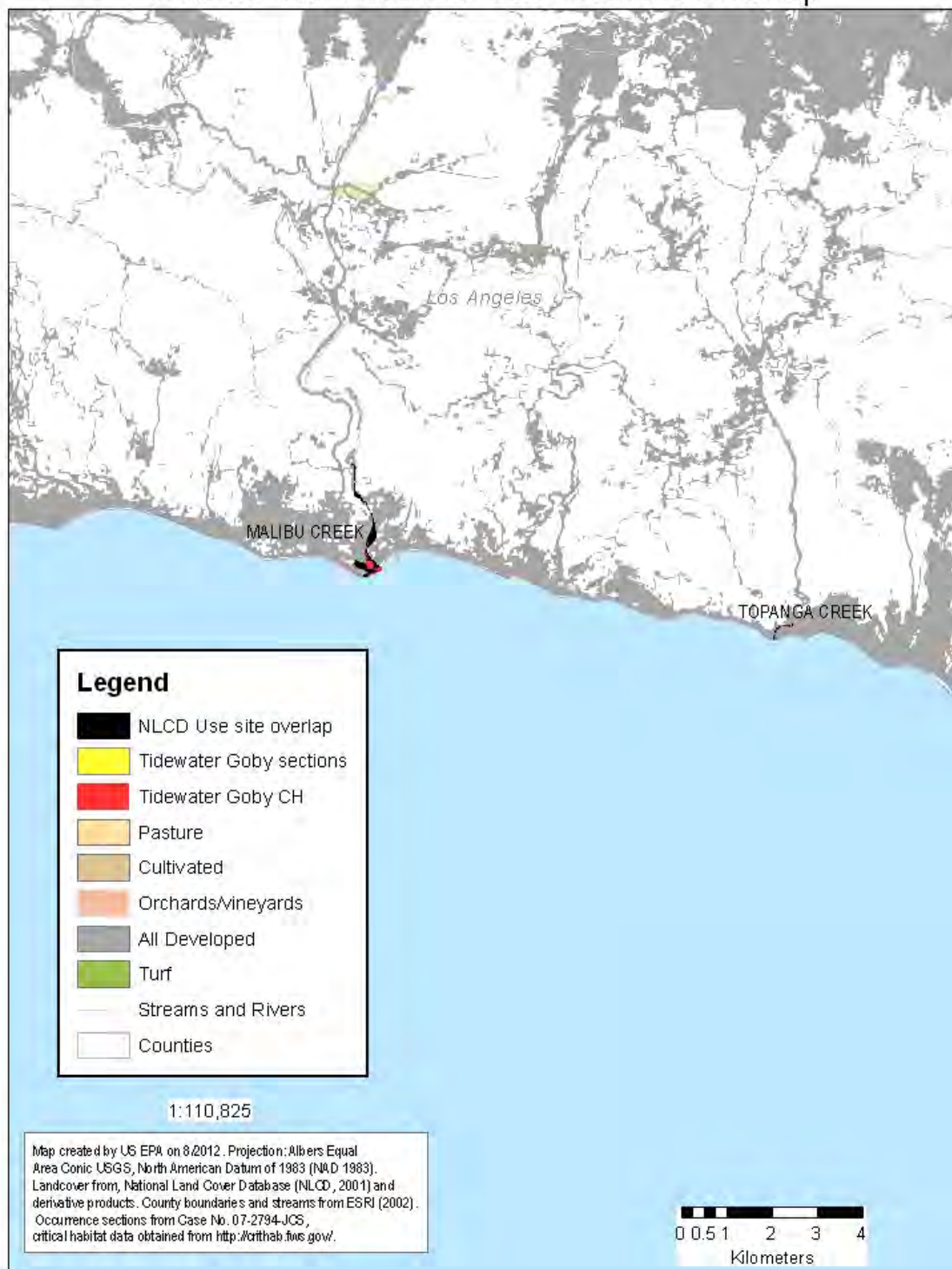


Figure 20 Tidewater Goby index map 18 depicting Malibu Creek to Topanga Creek critical habitat. Some potential use overlap is apparent.