



OFFICE OF CHEMICAL SAFETY AND POLLUTION PREVENTION

WASHINGTON, D.C. 20460

November 19, 2025

SENT BY EMAIL

Catherine Rice
catherine.rice@envu.com
ENVIRONMENTAL SCIENCE U.S., LLC

Subject: Labeling Notification per Pesticide Registration Notice (PRN) 98-10 - Adding area coverage in the Directions for Use to account for a new container size, in addition to other minor changes.
Product Name: F6141 EW INSECTICIDE
Admin Number: 101563-377
EPA Receipt Date: 11/07/2025
Action Case Number: 00675650

Dear Catherine Rice:

The U.S. Environmental Protection Agency is in receipt of your application for notification under Pesticide Registration Notice 98-10 for the above referenced product. The EPA has conducted a review of this request for its applicability under PRN 98-10 and finds that the action requested falls within the scope of PRN 98-10.

The labeling submitted with this application has been stamped "Notification" and will be placed in our records.

Should you wish to add/retain a reference to your company's website on your label, then please be aware that the website becomes labeling under the Federal Insecticide, Fungicide, and Rodenticide Act and is subject to review by the EPA. If the website is false or misleading, the product will be considered to be misbranded and sale or distribution of the product is unlawful under FIFRA section 12(a)(1)(E). 40 CFR § 156.10(a)(5) lists examples of statements the EPA may consider false or misleading. In addition, regardless of whether a website is referenced on your product's label, claims made on the website may not substantially differ from those claims approved through the registration process. Therefore, should the EPA find or if it is brought to our attention that a website contains statements or claims substantially differing from statements or claims made in connection with obtaining a FIFRA section 3 registration, the website will be referred to the EPA's Office of Enforcement and Compliance Assurance.

If you have questions, please contact Laura Rademacher via email at rademacher.laura@epa.gov.

Sincerely,

A handwritten signature in black ink, reading "Jacquelyn Herrick". The script is elegant and cursive, with the first letters of each name being capitalized and prominent.

Jacquelyn Herrick, PM 3
IVB1, RD
Office of Pesticide Programs

F6141 EW Insecticide

FOR RESIDENTIAL OUTDOOR USE ONLY

EPA Reg. No. 101563-377

EPA Est.

Active Ingredient:	By Wt.
Bifenthrin ¹	0.300%
Zeta-Cypermethrin ²	0.075%
Other Ingredients:	99.625%
	100.000%

¹ Cis isomers 97% min, trans isomers 3% max

² Cis/trans ratio: Max. 75% (±) cis and min. 25% (±) trans

NOTIFICATION

101563-377

The applicant has certified that no changes, other than those reported to the Agency have been made to the labeling. The Agency acknowledges this notification by letter dated:

11/19/2025

CAUTION

KEEP OUT OF REACH OF CHILDREN

See back panel [booklet] for additional precautionary statements

{Any or all listed bugs may be represented graphically on FPL}

PRODUCED FOR

Environmental Science U.S., LLC

5000 CentreGreen Way, Suite 400

Cary, NC 27513

Net Contents

{NOTE to PM: Chart format is optional; content may be formatted without boxes.}

FIRST AID	
If swallowed	Call poison control center or doctor immediately for treatment advice. Have person sip a glass of water if able to swallow. Do not induce vomiting unless told to do so by the poison control center or doctor. Do not give anything by mouth to an unconscious person.
If in eyes	Hold eye open and rinse slowly and gently with water for 15-20 minutes. Remove contact lenses, if present, after the first 5 minutes, then continue rinsing eye. Call a poison control center or doctor for treatment advice.
HOTLINE NUMBER	
Have the product container or label with you when calling a poison control center or doctor, or going for treatment. You may also contact 1-800-424-9300 for Emergency Assistance.	
NOTE TO PHYSICIAN	
Emergency Information call 1-800-424-9300.	

PRECAUTIONARY STATEMENTS
Hazards to Humans & Domestic Animals
Caution. Harmful if swallowed. Causes moderate eye irritation. Avoid contact with eyes or clothing. Wear: Long-sleeved shirt and long pants, socks, shoes, and gloves. Wash thoroughly with soap and water after handling and before eating, drinking, chewing gum, using tobacco, or using the toilet. Prolonged or frequently repeated skin contact may cause allergic reactions in some individuals.

ENVIRONMENTAL HAZARDS
<p>This pesticide is extremely toxic to fish, aquatic invertebrates, oysters and shrimp. To protect the environment, do not allow pesticide to enter or run off into storm drains, drainage ditches, gutters or surface waters. Applying this product in calm weather when rain is not predicted for the next 24 hours will help to ensure that wind or rain does not blow or wash pesticide off the treatment area. Rinsing application equipment over the treated area will help avoid run off to water bodies or drainage systems. Drift and run-off from treated areas may be hazardous to aquatic organisms in neighboring areas. Care should be used when spraying to avoid fish and reptile pets in/around ornamental ponds. This product is highly toxic to bees and other pollinating insects exposed to direct treatment of residues on blooming crops or weeds. Do not apply this product or allow to drift to blooming crops if bees or other pollinating insects are foraging in the treatment area.</p>
PHYSICAL OR CHEMICAL HAZARDS
Do not apply this product in or on electrical equipment due to the possibility of shock hazard.

STORAGE & DISPOSAL	PESTICIDE STORAGE
	Keep from freezing. Keep pesticide in original container. Do not put into food or drink containers. Avoid contamination of feed and foodstuffs. Store in a cool, dry place, preferably in a locked storage area.
	PESTICIDE DISPOSAL AND CONTAINER HANDLING
	Nonrefillable container. Do not reuse or refill this container. If empty: Place in trash or offer for recycling if available. If partly filled: Call your local solid waste agency for disposal instructions. Never place unused product down any indoor or outdoor drain.

DIRECTIONS FOR USE

It is a violation of Federal law to use this product in a manner inconsistent with its labeling.
Do not water the treated area to the point of run-off
Do not make applications during the rain.

All outdoor applications must be limited to spot or crack-and-crevice treatments only, except for the following permitted uses:

- [1. Treatment to soil or vegetation around structure;]
- [2. Application to lawns, turf, and other vegetation;]
- [3. Application to building foundations, up to a maximum height of 3 feet.]

{Note to PM: Statements 1,2, and 3 above may be optional depending upon labeled uses on the market label.}

Other than applications to building foundations, all outdoor applications to impervious surfaces such as sidewalks, driveways, patios, porches and structural surfaces (such as windows, doors, and eaves) are limited to spot and crack-and-crevice applications only.

Application is prohibited directly into sewers or drains, or to any area like a gutter where drainage to sewers, storm drains, water bodies, or aquatic habitat can occur. Do not allow the product to enter any drain, during or after application.

{Note to Reviewer: The following statements are only associated with “consumer mixed concentrate products” labels since the associated directions for use require the consumer to create a spray mixture. These statements are not relevant to “Ready-to-Spray product” labels. When these statements occur on the commercial label, they do not need to be bulleted.}

- [1 Tablespoon (Tbs) = 3 teaspoons (tsp) 1 fl oz = 2 Tbs 4 fl oz = ½ cup]
- Food utensils such as spoons and measuring cups must not be used for food purposes after use with pesticides.

Shake Well

[] **[READ ENTIRE LABEL BEFORE USE.]**

{Note to Reviewer: Optional clarification statements for use on the following product types}

Product Type	Clarification Statement
READY-TO-SPRAY PRODUCTS	Attach to hose
CONSUMER-MIXED CONCENTRATE PRODUCTS	Mix with water

Option 1

[Optional] Product Facts:

Kills Insects	<p>Adelgids, Ants (including Argentine, Carpenter, Foraging Fire Ants, Harvester, Lasius, Odorous, Pavement, Pharaoh/Sugar, Pyramid, Red Harvester, Imported Fire, Lawn), Aphids (including Apple, Black Cherry, Black Pecan, Buckhorn, Greenbug, Pea, Root, Rose, Rosy Apple, Walnut, Yellow Pecan), Apple Maggot, Armyworms (including Beet, Fall, Southern, True, Yellowstriped), Bagworms, Bees, Beetles (including Banded Cucumber, Bean Leaf, Blister, Black Flea Beetle, Black Turfgrass Ataenius, Colorado Potato, adult Cucumber, Dichondra Flea Beetle, Elm Leaf, Ground, adult Japanese, Mexican Bean, Pine Chaffer, Pine Shoot, Red Flour, Rose Chafer, Sap, Southern Corn Leaf, Spotted Cucumber, Striped Cucumber, Sweet Potato Flea Beetle, Whitefringed), Bluegrass Billbugs, Borers (including American Plum, Common Stalk, European Corn, Hop Vine, Lesser Peach Tree, Peach Tree, Peach Twig, Southern Corn, Southwestern Corn, Squash Stalk, Squash Vine), Boxelder Bugs, Brown Leaf Notcher, Caterpillars (including Alfalfa, Alfalfa Looper, Blueberry Spanworm, Budworms, Cabbage Looper, Celery Looper, Corn Earworm, Cranberry Fruitworm, Cross-Striped Cabbageworm, Filbert Worm, Green Cloverworm, Green Fruitworm, Hickory Shuckworm, Imported Cabbageworm, Melonworm, Navel Orangeworm, Painted Lady, Pickleworm, Potato Tuberworm, Red-Striped Fireworm, Rindworm, Saltmarsh, Tent, Tobacco Hornworm, Tomato Fruitworm, Tomato Hornworm, Tomato Pinworm, Velvetbean), Celery Leaf Tier, Centipedes, Chiggers, Chinch Bugs (including False, Hairy, Southern), Cicadas (including Periodical), Cockroaches (including American, Asian, Brown Banded, German, Smoky Brown), Corn Rootworms (including Mexican larvae, Northern larvae, Southern larvae, Western larvae), Craneflies (including European), Crickets, Cutworms (including Black, Western Bean), Earwigs, Eastern Sprucegall Adelgade, Fleahopper, Fleas (including Cat, Dog), Flies (including Biting, Cherry Fruit, Corn Silk Fly, Fungus Gnats, Houseflies, Walnut Husk), Glassywinged Sharp Shooter, Grasshoppers, Hornets, Lacebugs, Lady Beetles, Leafhoppers, Leafhoppers (including Aster/California, Corn, Eastern Grape, Potato, Southern Garden, Western Grape), Leafminers (including adult Corn Blotch, Alder, Boxwood, Holly, Oak, Spruce Needle, Tentiform, Vegetable), Leafrollers (including Oblique Banded, Red-Banded, Variegated), Little Leaf Notcher, Lygus Bug, Mealy Bug, Midges (including Rose), Millipedes, Mites (including Banks Grass, Broad, Carmine, Cheese, Clover, Dust, European, Grain, Pacific Spider, Pecan Leaf Scorch, Pecan Scorch, Red Spider, Russet, Spider, Spruce, Two-Spotted Spider), Mole Crickets, Mosquitoes, Moths (including Artichoke Plume, Codling, Diamondback, Gypsy, Oriental Fruit, Tip, Zimmerman Pine), Orange Tortri, Pecan Leaf Casebearer, Pecan Leaf Phylloxera, Pecan Nut Casebearer, Pecan Phylloxera, Pecan Stem Phylloxera, Plant Bugs (including Tarnished), Psyllids (including pear, potato), Roaches (Palmetto Bugs, Water Bugs), Rose Slugs, Sawflies (including European, European Pine, Redheaded, Redheaded Pine), Scales (including Brown Soft, California Red, Euonymus, Pine needle/Crawlers, San Jose), Scorpions, Sowbugs/Pillbugs/Rollie Pollies, Spiders (including Black Widow, Brown Recluse, Daddy Long Legs, Hobo, Wolf), Spittlebugs (including Meadow, Pecan), Springtails, Squash Bug, Stinkbug Spp (including brown marmorated stink bug, kudzu bug), Termites, Threecornered Alfalfa Hopper, Thrips (including Citrus), Ticks (including American, Brown Dog, Deer), Treehoppers, Tufted Apple Budmoth, Wasps, Webworms (including Fall, Mimosa, Oak, Sod), Weevils (including Annual Bluegrass, Black Vine, Blue Green Citrus Root, Carrot, Cow Pea Curculio, Cranberry, Curculio, Diaprepes Root, Northern Pine, Orchard, Orchid, Pea Leaf, Pea, Pecan, Pepper, Pine Shoot, Plum Curculio, Southern Blue Green Citrus Root, Sweet Potato), Whiteflies, Wireworms (including Corn, Southern Potato), Yellow Jackets</p>
Where to Use	<ul style="list-style-type: none"> • Roses and other ornamentals • Listed vegetables and fruit trees • Trees and shrubs • Lawns • Around house foundations, porches, patios and stored lumber
[Amount to Use] NOTE TO PM: THIS LINE FOR CONCENTRATE ONLY.	<ul style="list-style-type: none"> • Roses, ornamentals, vegetable gardens, melons and fruit trees: Mix 3 Tbs (1.5 oz) per gallon of water. Spray plants until thoroughly covered. • Lawns: Mix 1.5 to 3 Tbs (0.75 to 1.5 oz) per gallon of water sprayed to cover 125 sq ft. • Around house foundations: Mix 3 Tbs (1.5 oz) per gallon of water sprayed to cover 65 sq ft.

People & Pests [reentry icon]	People and pets may enter treated areas after spray has dried.
[When to Use] [OPTIONAL]	Roses, ornamentals, vegetable gardens, trees and lawns: When insects or damage first appear Around house foundations: Early in season or when insects appear

ROSES, FLOWERS, SHRUBS, & SMALL [NON-FRUIT BEARING] TREES	
Kills Insects	Aphids, Armyworms, Bagworms, Beetles (including Elm Leaf, Flea, Japanese (Adult), Pine Chaffer, Pine Shoot, Sap), Caterpillars (including Saltmarsh, Tent), Crickets, Eastern Sprucegall Adelgide, Grasshoppers, Hornets, Lacebugs, Lygus Bug, Mealy Bugs, Mites (including Spruce, Two-Spotted Spider), Mosquitoes, Moths (including Gypsy, Zimmerman Pine), Periodical Cicadas, Plant Bugs (including Tarnished), Sawflies (including European Pine, Redheaded Pine), Spittlebugs, Stinkbug Spp. (including brown marmorated stink bug, kudzu bug), Thrips, Wasps, Webworms (including Fall, Mimosa, Oak), Weevils (including Northern Pine, Orchard, Pine Shoot), Whiteflies

[NOTE TO PM: FOR USE WITH CONSUMER-MIXED CONCENTRATE PRODUCTS ONLY]

Amount to Use	<p>When using a tank sprayer</p> <ul style="list-style-type: none"> • 1.5 fl oz per gallon of water. • Spray plants until thoroughly covered. <p>When using the [Ortho® Dial 'N Spray®] [Applicator Name] applicator</p> <ul style="list-style-type: none"> • Set dial to 1.5 fl oz. • Pour product into jar to full or one-half full. • DO NOT add water. • Attach hose to the sprayer. • Spray evenly on plants. • Unused product must be poured back into its original container.
How to Apply	<ul style="list-style-type: none"> • Spray to uniformly cover upper and lower leaf surfaces, stems, and branches. When treating potted plants also lightly spray the soil surface. • Spray when air is calm to avoid drift. Apply as necessary, waiting 7 to 14 days between each application. Hard to control insects may require 2 to 3 applications. • If temperature is expected to exceed 85°F, spray in early morning or late afternoon when it is cooler. • Mosquitoes coming to rest on treated areas will be killed for varying periods of time after application, depending on exposure of treated areas to weather conditions. • [Try to spray underside of leaves and penetrate dense foliage. Bottle (32/40 fl oz) will treat 2,700/3,375 sq ft]

[NOTE TO PM: FOR USE WITH **READY-TO-SPRAY PRODUCTS ONLY**]

How to Apply	<ul style="list-style-type: none"> • Spray to uniformly cover upper and lower leaf surfaces, stems, and branches. When treating potted plants also lightly spray the soil surface. • Spray when air is calm to avoid drift. Apply as necessary, waiting 7 to 14 days between each application. Hard to control insects may require 2 to 3 applications. • If temperature is expected to exceed 85°F, spray in early morning or late afternoon when it is cooler. • Mosquitoes coming to rest on treated areas will be killed for varying periods of time after application, depending on exposure of treated areas to weather conditions. • [Try to spray underside of leaves and penetrate dense foliage. Bottle (32 fl oz) will treat 2,700 sq ft]
How to Apply (Optional #1)	<p>CONNECT</p> <ul style="list-style-type: none"> • Shake well before using. • Connect sprayer to hose. • Turn on water. <p>SPRAY</p> <ul style="list-style-type: none"> • Extend the hose to the farthest point in the lawn or garden away from the water faucet. This will minimize walking on the treated area. • To begin spraying, point nozzle in the direction you want to spray. • Bend small plastic tab back and turn knob to ON position. • Spray as directed in the “HOW TO APPLY” instructions for use. <p>FINISH</p> <ul style="list-style-type: none"> • To stop spraying, turn knob to OFF position. • Turn off water. • Relieve water pressure by bending the plastic tab back and turning knob to ON position until water slows to a drip. Then, turn knob back to OFF position. • Disconnect sprayer from hose.
How to Apply (Optional #2)	<p>CONNECT</p> <ul style="list-style-type: none"> • Shake well before using. • Connect sprayer to hose. • Turn on water. <p>SPRAY</p> <ul style="list-style-type: none"> • Extend the hose to the farthest point in the lawn or garden away from the water faucet. This will minimize walking on the treated area. • To begin spraying, [disengage safety lock and] point nozzle in the direction you want to spray. • Slide thumb activation switch forward to ON position. • Spray as directed in the “HOW TO APPLY” instructions for use. <p>FINISH</p> <ul style="list-style-type: none"> • To STOP spraying, slide thumb activation switch backward to OFF position. • Turn off water. • Relieve water pressure by sliding thumb switch to [ON] [WATER] [WATER ONLY] position until water slows to a drip. Then, slide switch back to OFF position [and engage safety lock]. • Disconnect sprayer from hose.

[Optional illustrations may be used in conjunction with the above steps]

AROUND HOUSE FOUNDATIONS, PORCHES, PATIOS & STORED LUMBER

Do not treat Firewood

Kills Insects

Ants (including Argentine, Carpenter, Lasius, Odorous, Pavement, Pharaoh/Sugar, Pyramid, Red Harvester), Centipedes, Cockroaches (including American, Asian, German), Crickets, Earwigs, Fleas, Houseflies, Millipedes, Mosquitoes, Roaches (Palmetto Bugs), Scorpions, Sowbugs/Pillbugs/Rollie Pollies, Spiders (including black widow, brown recluse, hobo), Stinkbugs Spp. (including brown marmorated stink bug and kudzu bug), Ticks (including American, Brown Dog, Deer)

[NOTE TO PM: FOR USE WITH CONSUMER-MIXED CONCENTRATE PRODUCTS ONLY]**Amount to Use**

When using a tank sprayer

- 1.5 fl oz (3 Tbs) per gallon of water to be sprayed over 16 linear feet (65 sq ft)

When using the [Applicator Name] applicator

- Set dial to 1.5 fl oz.
- Add 6 fl oz to sprayer jar.
- DO NOT add water.
- Attach hose to the sprayer.
- Spray evenly over 64 linear feet (or 260 sq ft) until jar is empty.
- Unused product must be poured back into its original container.

How to Apply

- To keep insects from entering the house, use a hose-end or tank sprayer to spray a 2 foot band around the house next to the foundation. Also spray the foundation of the house up to a height of 2 feet.
- Repeat application every 14 days if necessary.
- [Bottle (32/40 fl oz) will treat 1,400/1,750 sq ft of foundation/perimeter.]

[NOTE TO PM: FOR USE WITH **READY-TO-SPRAY PRODUCTS ONLY**]

How to Apply	<ul style="list-style-type: none"> • To keep insects from entering the house, spray a 2 foot band around the house next to the foundation. Also spray the foundation of the house up to a height of 2 feet. • Repeat application every 14 days if necessary. • [Bottle (32 fl oz) will treat 1,400 sq ft of foundation/perimeter]
How to Apply (Option #1)	<p>CONNECT</p> <ul style="list-style-type: none"> • Shake well before using. • Connect sprayer to hose. • Turn on water. <p>SPRAY</p> <ul style="list-style-type: none"> • Extend the hose to the farthest point in the lawn or garden away from the water faucet. This will minimize walking on the treated area. • To begin spraying, point nozzle in the direction you want to spray. • Bend small plastic tab back and turn knob to ON position. • Spray as directed in the “HOW TO APPLY” instructions for use. <p>FINISH</p> <ul style="list-style-type: none"> • To stop spraying, turn knob to OFF position. • Turn off water. • Relieve water pressure by bending the plastic tab back and turning knob to ON position until water slows to a drip. Then, turn knob back to OFF position. • Disconnect sprayer from hose.
How to Apply (Option #2)	<p>CONNECT</p> <ul style="list-style-type: none"> • Shake well before using. • Connect sprayer to hose. • Turn on water. <p>SPRAY</p> <ul style="list-style-type: none"> • Extend the hose to the farthest point in the lawn or garden away from the water faucet. This will minimize walking on the treated area. • To begin spraying, [disengage safety lock and] point nozzle in the direction you want to spray. • Slide thumb activation switch forward to ON position. • Spray as directed in the “HOW TO APPLY” instructions for use. <p>FINISH</p> <ul style="list-style-type: none"> • To STOP spraying, slide thumb activation switch backward to OFF position. • Turn off water. • Relieve water pressure by sliding thumb switch to [ON] [WATER] [WATER ONLY] position until water slows to a drip. Then, slide switch back to OFF position [and engage safety lock]. • Disconnect sprayer from hose.

[Optional illustrations may be used in conjunction with the above steps]

LAWN INSECTS	
Kills Insects	Ants (including Argentine, Carpenter, Foraging Fire), Armyworms, Beetles (including Black Turfgrass Ataenius, Billbugs, adult Japanese), Chinch Bugs, Crickets, Cutworms, Deer Ticks, Fleas, Greenbug Aphids, Mole Crickets, Mosquitoes, Sod Webworms, Weevils (including Annual Bluegrass)
WHEN TO MOW & WATER	<ul style="list-style-type: none"> • Apply to lawn that was mowed and watered within the last 24 hours. Mowing may be resumed after 2-3 days. • For mole cricket control, water thoroughly immediately after application.
WHEN TO APPLY	<ul style="list-style-type: none"> • Apply when insects first appear. • Wait 4 to 6 weeks between applications.

[NOTE TO PM: FOR USE WITH **CONSUMER-MIXED CONCENTRATE PRODUCTS ONLY**]

Amount to Use	<p>When using a tank sprayer</p> <ul style="list-style-type: none"> • Mix 0.75 to 1.5 fl oz (1.5 to 3 Tbs) into a gallon of water to be sprayed over 125 sq ft. <p>When using the [Ortho® Dial 'N Spray®] [Applicator Name] applicator</p> <ul style="list-style-type: none"> • Set dial to 1.5 fl oz. • Add 6 fl oz to sprayer jar. • DO NOT add water. • Attach hose to the sprayer. • Spray evenly over 500 to 1,000 sq ft until jar is empty. • Unused product must be poured back into its original container.
How to Apply	<ul style="list-style-type: none"> • Measure lawn. Calculate square feet by multiplying length times width. [walking man icon] • Spray evenly over measured area. Treat entire lawn. • [Bottle (32/40 fl oz) will treat up to 5,300/6,625 sq ft.] • Tough to Control Insects: To control carpenter ants spray 1.5 fl oz per gallon evenly over 65 sq ft. • Mosquitoes coming to rest on treated areas will be killed for varying periods of time after application, depending on exposure of treated areas to weather conditions.

[NOTE TO PM: FOR USE WITH **READY-TO-SPRAY PRODUCTS ONLY**]

How to Apply	<ul style="list-style-type: none"> • Spray evenly over desired area. [Bottle (32 fl oz) will treat up to 5,300 sq ft] • Tough to Control Insects: To control carpenter ants spray evenly over 1,400 sq ft. • Mosquitoes coming to rest on treated areas will be killed for varying periods of time after application, depending on exposure of treated areas to weather conditions.
How to Apply (Optional #1)	<p>CONNECT</p> <ul style="list-style-type: none"> • Shake well before using. • Connect sprayer to hose. • Turn on water. <p>SPRAY</p> <ul style="list-style-type: none"> • Extend the hose to the farthest point in the lawn or garden away from the water faucet. This will minimize walking on the treated area. • To begin spraying, point nozzle in the direction you want to spray. • Bend small plastic tab back and turn knob to ON position. • Spray as directed in the “HOW TO APPLY” instructions for use. <p>FINISH</p> <ul style="list-style-type: none"> • To stop spraying, turn knob to OFF position. • Turn off water. • Relieve water pressure by bending the plastic tab back and turning knob to ON position until water slows to a drip. Then, turn knob back to OFF position. • Disconnect sprayer from hose.
How to Apply (Optional #2)	<p>CONNECT</p> <ul style="list-style-type: none"> • Shake well before using. • Connect sprayer to hose. • Turn on water. <p>SPRAY</p> <ul style="list-style-type: none"> • Extend the hose to the farthest point in the lawn or garden away from the water faucet. This will minimize walking on the treated area. • To begin spraying, [disengage safety lock and] point nozzle in the direction you want to spray. • Slide thumb activation switch forward to ON position. • Spray as directed in the “HOW TO APPLY” instructions for use. <p>FINISH</p> <ul style="list-style-type: none"> • To STOP spraying, slide thumb activation switch backward to OFF position. • Turn off water. • Relieve water pressure by sliding thumb switch to [ON] [WATER] [WATER ONLY] position until water slows to a drip. Then, slide switch back to OFF position [and engage safety lock]. • Disconnect sprayer from hose.

[Optional illustrations may be used in conjunction with the above steps]

HOME VEGETABLE GARDENS, MELONS & FRUIT and NUT TREES	
Kills the Following Insects	Aphids (including Apple, Black Cherry, Buckhorn, Pea, Pecan, Rosy Apple, Walnut), Apple Maggot, Armyworms (including Beet), Beetles (including Colorado Potato, Flea, Mexican Bean, Sap, Spotted Cucumber, Striped Cucumber), Borers (including American Plum, Lesser Peach Tree, Peach Tree, Peach Twig, Squash Vine, Stalk), Caterpillars (including Alfalfa, Alfalfa Looper, Blueberry Spanworm, Cabbage Looper, Celery Looper, Chinch Bugs, Corn Earworm, Cranberry Fruitworm, Filbert Worm, Green Cloverworm, Green Fruitworm, Hickory Shuckworm, Imported Cabbageworm, Navel Orangeworm, Painted Lady, Pickleworm, Potato Tuberworm, Red-Striped Fireworm, Rindworm, Saltmarsh, Tobacco Hornworm, Tomato Fruitworm, Tomato Hornworm, Tomato Pinworm, Velvetbean), Corn Borers (including European, Southwestern), Corn Rootworm, Crickets, Cutworms (including Western Bean Cutworm), Fall Webworms, Flies (including Cherry Fruit, Corn Silk, Walnut Husk), Grasshoppers, Lacebugs, Leafhoppers (including Potato Leaf Hopper), Leafminers (including Tentiform, Vegetable), Leaf Rollers (including Oblique Banded, Red-Banded, Variegated), Loopers, Lygus Bug, Mites (Clover), Moths (including Artichoke Plume, Codling, Diamondback, Oriental Fruit), Pear Psylla, Pecan Leaf Casebearer, Pecan Leaf Phylloxera, Pecan Nut Casebearer, Pecan Spittlebug, Pecan Stem Phylloxera, Plant Bugs (including Tarnished), Potato Psyllid, Scales (San Jose), Squash Bug, Stinkbug Spp., (including Brown Marmorated Stink Bug, Kudzu Bug), Tufted Apple Budmoth, Weevils (including Black Vine, Carrot, Cow Pea Curculio, Cranberry, Pea, Pecan, Pepper, Plum Curculio), Whiteflies
When to Apply	<ul style="list-style-type: none"> • Apply when insects first appear. • Re-apply as necessary to maintain control waiting at least 7 days between each application.

[NOTE TO PM: FOR USE WITH **CONSUMER-MIXED CONCENTRATE PRODUCTS ONLY**]

Amount to Use	<p>When using a tank sprayer</p> <ul style="list-style-type: none"> • Mix 1.5 fl oz into a gallon of water. <p>When using the [Ortho® Dial N Spray®] [Applicator Name] applicator</p> <ul style="list-style-type: none"> • Set dial to 1.5 fl oz. • Pour product into jar to full or one-half full. • DO NOT add water. • Attach hose to the sprayer. • Unused product must be poured back into its original container.
How to Apply	<ul style="list-style-type: none"> • Apply as a thorough spray, wetting leaves and branches, but do not let runoff occur. • Re-apply as necessary to maintain control waiting at least 7 days between each application. Be sure to follow important limitations for the specific edible plant you are spraying on the days to wait before harvest • [Try to spray underside of leaves and penetrate dense foliage. Bottle (32/40 fl oz) will treat 2,700/3,375 sq ft]

[NOTE TO PM: FOR USE WITH **READY-TO-SPRAY PRODUCTS ONLY**]

How to Apply	<ul style="list-style-type: none"> • Apply as a thorough spray, wetting leaves and branches, but do not let runoff occur. • Be sure to follow important limitations for the specific edible plant you are spraying, including the amount of spray which can be applied, the interval between sprays, and the days to wait before harvest. • [Try to spray underside of leaves and penetrate dense foliage. Bottle (32 fl oz) will treat 2,700 sq ft.]
How to Apply (Optional #1)	<p>CONNECT</p> <ul style="list-style-type: none"> • Shake well before using. • Connect sprayer to hose. • Turn on water. <p>SPRAY</p> <ul style="list-style-type: none"> • Extend the hose to the farthest point in the lawn or garden away from the water faucet. This will minimize walking on the treated area. • To begin spraying, point nozzle in the direction you want to spray.

	<ul style="list-style-type: none"> • Bend small plastic tab back and turn knob to ON position. • Spray as directed in the “HOW TO APPLY” instructions for use. <p>FINISH</p> <ul style="list-style-type: none"> • To stop spraying, turn knob to OFF position. • Turn off water. • Relieve water pressure by bending the plastic tab back and turning knob to ON position until water slows to a drip. Then, turn knob back to OFF position. • Disconnect sprayer from hose.
How to Apply (Optional #2)	<p>CONNECT</p> <ul style="list-style-type: none"> • Shake well before using. • Connect sprayer to hose. • Turn on water. <p>SPRAY</p> <ul style="list-style-type: none"> • Extend the hose to the farthest point in the lawn or garden away from the water faucet. This will minimize walking on the treated area. • To begin spraying, [disengage safety lock and] point nozzle in the direction you want to spray. • Slide thumb activation switch forward to ON position. • Spray as directed in the “HOW TO APPLY” instructions for use. <p>FINISH</p> <ul style="list-style-type: none"> • To STOP spraying, slide thumb activation switch backward to OFF position. • Turn off water. • Relieve water pressure by sliding thumb switch to [ON] [WATER] [WATER ONLY] position until water slows to a drip. Then, slide switch back to OFF position [and engage safety lock]. • Disconnect sprayer from hose.

[Optional illustrations may be used in conjunction with the above steps]

VEGETABLES AND FRUITS	DAYS TO HARVEST	CALIFORNIA DAYS TO WAIT TO HARVEST
Corn (Sweet corn)	3	3
Tomatoes	1	1
Blackberries, Raspberries	3	3
Lima Beans	3	3
Peas (Green pea, Snow pea, Sugar Snap pea), Beans (Snap bean, Wax bean), Blackeyed pea	3	3
Chayote (fruit), Cucumber, Edible gourds, Cantaloupe, Casaba, Honeydew melon, Pumpkin, Summer squash (Zucchini), Winter squash (Butternut squash, Acorn squash, Spaghetti squash), Watermelon	3	3
Mustard Greens	7	Do not use
Broccoli, Chinese broccoli, Cabbage, Cauliflower,	7	7
Peppers (Bell and Non-bell), Eggplant	7	7
Head Lettuce	7	7
Pears	14	14
Pecans	21	21

END OF OPTION 1

Option 2: FIRE ANT MOUND TREATMENT

[OPTIONAL] Product Facts:

Kills Fire Ants	On lawns, flower beds, landscape areas, patios, driveways, and sidewalks
Where To Apply/Use	On fire ant mounds
When To Apply/Use	Apply any time fire ant mounds are present
[How To Apply/Use] [APPLIES TO READY TO SPRAY ONLY]	Apply for 30 seconds directly to mound and surrounding 2 ft. radius.
[Helpful Hints]	For best results, apply in cool weather (65° to 80°F), or in early morning or late evening hours when it is cool and the ants are most active.
People & Pets [Icon/Symbol]	Keep people and pets off treated area until spray has dried.

FIRE ANT MOUNDS	
Kills Insects	Fire Ants
WHEN TO APPLY	Apply any time fire ant mounds are present

[NOTE TO PM: FOR USE WITH **READY-TO-SPRAY PRODUCTS ONLY]**

How to Apply	<ul style="list-style-type: none">• Apply for 30 seconds directly to mound and surrounding 2 ft. radius
How to Apply (Optional #1)	<p>CONNECT</p> <ul style="list-style-type: none">• Shake well before using.• Connect sprayer to hose.• Turn on water. <p>SPRAY</p> <ul style="list-style-type: none">• Extend the hose to the farthest mound to be treated from the water faucet. This will minimize disturbing treated mounds.• To begin spraying, point nozzle at the mound you want to treat.• Bend small plastic tab down and turn knob to ON position.• Spray for 30 seconds directly on the mound and the surrounding 2 ft radius. <p>FINISH</p> <ul style="list-style-type: none">• To stop spraying, turn knob to OFF position.• Turn off water.• Relieve water pressure by bending the plastic tab down and turning knob to ON position until water slows to a drip. Then, turn knob back to OFF position.• Disconnect sprayer from hose.
How to Apply (Optional #2)	<p>CONNECT</p> <ul style="list-style-type: none">• Shake well before using.• Connect sprayer to hose.• Turn on water. <p>SPRAY</p> <ul style="list-style-type: none">• Extend the hose to the farthest mound to be treated from the water faucet. This will minimize disturbing treated mounds.• To begin spraying, [disengage safety lock and] point nozzle in the direction you want to spray.• Slide thumb activation switch forward to ON position.• Spray as directed in the “HOW TO APPLY” section. <p>FINISH</p> <ul style="list-style-type: none">• To STOP spraying, slide thumb activation switch backward to OFF position.• Turn off water.• Relieve water pressure by sliding thumb switch to [ON] [WATER] [WATER ONLY] position until water slows to a drip. Then, slide switch back to OFF position [and engage safety lock].• Disconnect sprayer from hose.

[Optional illustrations may be used in conjunction with the above steps]

End of Option 2: FIRE ANT MOUND TREATMENT

Option 3: **OUTDOOR PERIMETER TREATMENT**

Outdoor Perimeter Treatment	
Kills Insects	Ants (including carpenter ant, Lasius, Argentine, red harvester, pavement, odorous, pyramid, pharaoh), centipedes, cockroaches (including American, Asian, German), crickets, earwigs, fleas, house flies, millipedes, mosquitoes, palmetto bugs, scorpions, sowbugs, spiders, and ticks (including American, deer tick, brown dog tick).
Where to Use	<ul style="list-style-type: none"> • Home foundation (perimeter) • Exterior doors and windows • Porches and patios • Along eaves and exterior siding
When to Re-Apply	<ul style="list-style-type: none"> • Repeat application is necessary only if there are signs of renewed insect activity. • Repeat application must be limited to no more than once per seven days. • DO NOT APPLY THIS PRPRODUCT TO HUMANS OR ANIMLS • DO NOT TREAT FIREWOOD
People and Pets [reentry icon]	People and pets may enter treated area after application has dried.

[NOTE TO PM: FOR USE WITH **READY-TO-SPRAY PRODUCTS ONLY**]

How to Apply	<p>To keep insects from entering the house:</p> <ul style="list-style-type: none"> • Spray a 4 foot band around the house next to the foundation both on the soil and up the side of the house using the illustration as an example {<i>illustration</i>} • This package will treat up to 360 linear feet with a 4 foot band of product. Apply product at a rate of approximately 1 linear foot for every 2 seconds. • In addition to the foundation, product can also be used around window frames and doorways, on porches and patios, along eaves and exterior siding.
How to Apply (Optional #1)	<p>CONNECT</p> <ul style="list-style-type: none"> • Shake well before using. • Connect sprayer to hose. • Turn on water. <p>SPRAY</p> <ul style="list-style-type: none"> • To begin spraying, point nozzle in the direction you want to spray. • Bend small plastic tab back and turn knob to ON position. • Spray as directed in the “HOW TO APPLY” section. <p>FINISH</p> <ul style="list-style-type: none"> • To stop spraying, turn knob to OFF position. • Turn off water. • Relieve water pressure by bending the plastic tab back and turning knob to ON position until water slows to a drip. Then, turn knob back to OFF position. • Disconnect sprayer from hose.
How to Apply (Optional #2)	<p>CONNECT</p> <ul style="list-style-type: none"> • Shake well before using. • Connect sprayer to hose. • Turn on water. <p>SPRAY</p> <ul style="list-style-type: none"> • To begin spraying, [disengage safety lock and] point nozzle in the direction you want to spray. • Slide thumb activation switch forward to ON position. • Spray as directed in the “HOW TO APPLY” instructions for use. <p>FINISH</p> <ul style="list-style-type: none"> • To STOP spraying, slide thumb activation switch backward to OFF position. • Turn off water. • Relieve water pressure by sliding thumb switch to [ON] [WATER] [WATER ONLY] position until water slows to a drip. Then, slide switch back to OFF position [and engage safety lock]. • Disconnect sprayer from hose.

[Optional illustrations may be used in conjunction with the above steps]

End of Option 3: OUTDOOR PERIMETER INSECT KILLER

{Note to reviewer: The information contained in this box may be used with supplemental distributor #1. No box is required around this information.}

[Visit our website]
www.ortho.com[computer icon]

[Product of] / [Made in] USA

© 2012, Licensed by The Ortho Group.
World rights reserved.

+ The ORTHO Guarantee:

If for any reason you, the consumer, are not satisfied with this product, mail us original proof of purchase to obtain a full refund of your purchase price.

NOTICE:

To the extent consistent with applicable law, buyer assumes all risks of use, storage or handling of this product not in accordance with directions.

Questions, Comments or Medical Information?

1-800-225-2883 [icon/symbol]

{Note to reviewer: The information contained in this box may be used with supplemental distributor #2. No box is required around this information.}

NOTICE: To the extent consistent with applicable law, buyer assumes all risks of use, storage or handling of this product not in accordance with directions.

Questions & Comments:

Call 1-800-767-9927 or visit our website at www.cutterinsectrepellents.com



[Associated graphics]

{Note to reviewer: The information contained in this box may be used with supplemental distributor #3. No box is required around this information.}

NOTICE: To the extent consistent with applicable law, buyer assumes all risks of use, storage or handling of this product not in accordance with directions.

Questions & Comments:

Call 1-800-917-5438 or visit our website at www.spectricide.com

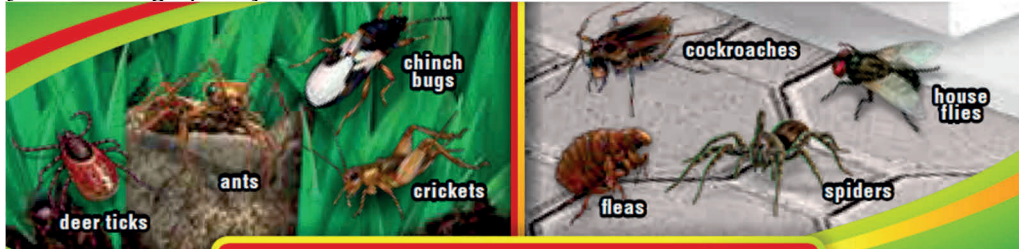
Money-Back guarantee†

†For terms of guarantee, see back panel.

†If you are not satisfied with this product for any reason within 90 days, send your written request for a refund to the address below, together with the proof of purchase from an authorized seller showing the price you paid. Please allow 6-8 weeks for processing.



[Associated graphics]



Optional Corner Flap Labeling Information

- Indicate page where Spanish begins
- OPEN
- PRESS TO RESEAL (Placed on base label)
- Resealable Label for Directions & Precautions

Optional Fill Marker Embossed on Bottle

Linear Feet [Ft]

Square Feet [Ft²]

Ounces

Oz

Optional Marketing Claims (claims may appear on any or all label panels):

Note to PM: insects/pests/bugs may be used interchangeably

Note to PM: house/home may be used interchangeably

Note to PM: When qualified claims are used on the market label, the qualifying statement will appear in close proximity to the claim when it does not impact any mandatory language

Efficacy:

[GENERAL claims]

Kills ticks that may transmit Lyme disease

Kills mosquitoes that may transmit West Nile Virus

Kills mosquitoes and other nuisance listed insects/pests

Kills mosquitoes, fleas & deer ticks & other listed insects {Note to reviewer: All pests are currently listed on the label – see the table on page 4}

Guaranteed kill or your money back

Kills [1,2,3,4...250...257] listed insects

[Plus] Kills/controls [insert any combination of listed insects]/[250][listed insects]

Kills/controls listed bugs/pests/insects on [insert any combination of listed use sites]

Pyrethroid technology

Two active ingredients in one product

[Plus] kills mosquitoes outdoors

Kills/Controls listed bugs outdoors before they can come indoors.

Helps protect your [house/home] from invading listed insects.

Kills/controls outdoor listed insects by contact so you and your family can enjoy your home

Dual Action Formula: (1) Kills and (2) Controls

[Dual Action Formula] Starts Killing fast and lasts long

11/7/2025 (ESL NOTIF 11/4/2025)

2 in 1 Action/Formula: (1) Kills and (2) Controls

2-in-1 Action/Formula: Kills and Controls

2 in 1 Action/Formula: (1) Starts Killing fast and (2) lasts long

Kills bugs on your lawns, trees & shrubs, roses & flowers, fruits, nuts & vegetables.

Protects your [lawn/backyard/patio/deck/porch/garden/playground/outdoor living spaces] from bugs/insects [so you [and your kids/pets/dog] can enjoy your [event/party/barbeque/birthday party/playtime/home/yard]]

Protects lawns

Kills/controls bugs/insects [which destroy lawns, roses, flowers, tree, shrubs, edibles] [and/or] [which] [annoy people/kids/pets.]

Protects your yard all weekend long

Kills/Controls all listed insects [like...insert any combination of listed insects] [that commonly harm roses/flowers/trees/shrubs/ edibles/fruits/vegetables/ornamentals/lawns]

Kills/Controls listed home invading pests

OUTDOOR PERIMETER INSECT KILLER specific

Kills listed home invading pests

Keeps listed bugs from coming inside [the house]!

Create(s) a long-lasting [bug]barrier/perimeter/border/residual treatment

Create an exterior [home perimeter] bug [perimeter/border/residual treatment]!

Creates a protective perimeter/barrier/border/residual treatment that keeps listed insects from coming in the house

Non-staining

Odor Free

Odor Free

Low Odor

[FIRE ANT SPECIFIC]

Kills the queen. [Kills the [mound/colony]]

Kills the queen [&] [and the] colony

Fire ant mound drench

Kills foraging fire ants

Speed:

[GENERAL]

Starts killing within minutes.

Starts activity within minutes

Kills listed insects by contact

Kills by contact (guaranteed)⁺

Kills by contact

Starts to kill/killing/working within/in minutes/quick/fast [and creates a 3 month bug barrier/and provides 3 month control/and lasts for 3 months] for listed insects*.

Starts to kill [any combination of listed bugs] in minutes*

Starts to kill/Stops [any combination of listed insects] in minutes*.

Goes to work in minutes*

Starts activity within minutes*

Fast acting formula*

*[Applies to/for]: carpenter ants, harvester ants, oriental and German cockroaches

[FIRE ANT SPECIFIC]

Kills the colony in 24 hours

Starts killing fire ants immediately

Kills [Foraging][Biting] Fire Ants [in 15/30 minutes] Guaranteed⁺

Guaranteed to kill [Foraging] Fire Ants in 15/30 minutes

Residual:

3-month claims

Provides residual control for [up to] 3 months [outdoors]*

Creates/Provides a 3 month bug barrier*

Kills/Controls [listed insects] [for] [up to] 3/three months [outdoors]*

11/7/2025 (ESL NOTIF 11/4/2025)

[One application][up to] three/3 month control/protection [outdoors]*

[One application] Keeps listed bugs away/out for [up to] 3/three months*

Kills listed insects [outdoors] for [up to] 3 months*

*[Applies to/for] [any combination of the following]: ants, fleas, cockroaches, spiders (excluding black widow), house flies, scorpions, and American dog ticks

6-Month Claims

Up to 6 month control [protection] outdoors*

Kills [Controls] [Protects] [for] up to 6 months outdoors*

Kills listed bugs [indoors] [and] [outdoors] for 6 months*

* [Applies to/for]: spiders (excluding black widow, brown recluse, hobo)

[OUTDOOR PERIMETER INSECT KILLER specific]

One application keeps listed bugs out for an entire month!*

Keeps listed bugs away for up to 1 month*

One application keeps [any combination of listed insects qualified below] out for up to 1 month!

*[Applies to/for]: Mosquitoes, Fleas, Cockroaches and Flies.

[FIRE ANT SPECIFIC]

Long lasting [] control of fire ants

Prevents new mounds from forming [for up to] ([4,5,6...12] weeks / [1,2,3] months /).

One application lasts [protects] [for up to] ([4,5,6...12] weeks / [1,2,3] months /) [against fire ants]

Kills fire ants by contact [and lasts/keeps killing] [for up to] [4,5,6...12] weeks / [1,2,3] months]

Kills fire ants [and prevents new mounds from forming] [for up to] ([4,5,6...12] weeks / [1,2,3] months /

Usage:

Use on lawns, around home perimeter, ornamentals, flowers, trees, shrubs, vegetables & fruit trees.

[One [32 oz] bottle] covers up to XXX square feet [sq ft] > Lawn insects]

[One [32 oz] bottle] covers up to XXX square feet [sq ft] > Flowers, shrubs]

[One [32 oz] bottle] covers up to XXX square feet [sq ft] > Home Perimeter]

[One [32 oz] bottle] Makes up to 42 gallons – [concentrate product package only]

[One [32 oz] bottle] Makes up to 21 gallons – [concentrate product package only]

[OUTDOOR PERIMETER INECT KILLER specific]

Great for treating the home foundation!

Great for treating large areas [like [around] the home [house] foundation]!

Treats the exterior perimeter of an average [2,000] [X] sq ft. 2-story home

Use outside your home

1 bottle treats the exterior perimeter of an average [2,000] [X] sq ft. 2-story home over 2X (32 oz. Consumer Mixed Concentrate) [Illustration of 1 bottle = 2 homes]

Sprays up to 25 gallons

Makes 25 gallons of spray

Makes X Gallons[!] (Consumer Mixed Concentrate)

[FIRE ANT SPECIFIC]

32oz bottle kills 21 mounds (32oz size)

Just apply for 30 seconds directly to mound and surrounding 2 foot radius.

Ready-to-Spray Applicator Claims:

GENERAL

Ready to Spray Hose-end applicator

Gentle shower applicator- won't harm plants [or blooms]

Gentle shower applicator- won't damage plants [or blooms]

One-handed operation

Ergonomic [design]

Ready-Spray® [Ready-to-Spray] [Applicator Name]

[Simply] attach to [garden] hose and spray [go]

11/7/2025 (ESL NOTIF 11/4/2025)

No mixing required
Gentle shower [applicator] [spray pattern]
Broadcast [applicator] [spray pattern]
Easy [to use]
Simple [and easy] [to use]
Convenient
Economical – use to cover large areas
Easily cover large areas
Hand doesn't get wet [Hand stays dry]
Easy grip [control]
Includes water [only] setting [option]
Convenient [Simple] [Design]
[Easy] [Ergonomic] Comfort Grip [Design]



Grip, Flip, Go []
[Instant] [Easy] [One-handed] on/off [applicator] [switch] [action]
No mixing, no measuring- just spray!
Easy-to-use sprayer

[Outdoor Perimeter specific]
Easy-to-use perimeter treatment

Plants & Vegetables:

Formulated for [use on] Vegetables/Edibles/[Edible plants]
Can be used [use in/on/around] Vegetables/[&] Edibles/[&] Edible plants]
[Miracle-Gro] Recommended/Endorsed [by Miracle-Gro] to help grow big, beautiful plants.
[Miracle-Gro] Recommended/Endorsed [by Miracle-Gro] to help grow plants twice as big.
[Miracle-Gro] Recommended/Endorsed [by Miracle-Gro] to help grow big, beautiful flowers, fruits & vegetables.
Provides residual control for up to 6 weeks*.
Kills/Controls [insects] [for up to] ([4,5,6] weeks / [1,2] months) [outdoors]*
Up to six [6] week protection*
One application...[up to six [6] week control]*
Contains bifenthrin, a long-lasting insecticide that provides contact and residual control of listed hard-to-kill sucking and chewing insects for up to [4,5,6] weeks.*
Provides residual control for up to 6 weeks.*
Provides residual control* *for listed insects
Guards/Defends/Shields/Safeguards/Protects flowers and edibles from listed bugs for [up to 2,3,4,5,6]] weeks*
Guards/Defends/Shields/Safeguards/Protects fruit and vegetables from listed bugs for [up to [2,3,4,5,6]] weeks*
Guards/Defends/Shields/Safeguards/Protects gardens and landscapes from listed bugs for [up to [2,3,4,5,6]] weeks*

2 week residual claims

*[Applies to/for]: aphids, whiteflies, flea beetles, pea weevil, potato leaf hopper, cabbage looper, mites

Up to 4 week residual claims

*[Applies to/for]: pea weevil, potato leaf hopper, cabbage looper, mites

Up to six weeks residual claims

*[Applies to/for]: cabbage looper, mites

Houseplants:

Controls/Kills/Destroys listed bugs that attack indoor and/& outdoor plants
Guard/Defends/Shields/Safeguards/Protects your Indoor and/& Outdoor Plants from listed bugs
Guard/Defends/Shields/Safeguards/Protects Houseplants from listed Insects
Non-staining
May be used on indoor and outdoor plants.

[Dealers Must Sell in Original Packages Only.]

[Conditions of Sale and Limitation of Warranty and Liability:]

[NOTICE: Read the entire Directions for Use and Conditions of Sale and Limitation of Warranty and Liability before buying or using this product. If the terms are not acceptable, return the product at once, unopened, and the purchase price will be refunded.]

[The Directions for Use of this product must be followed carefully. It is impossible to eliminate all risks inherently associated with the use of this product. Crop injury, ineffectiveness, or other unintended consequences may result because of such factors as manner of use or application, weather or crop conditions beyond the control of Environmental Science U.S., LLC or Seller. All such risks shall be assumed by Buyer and User, and Buyer and User agree to hold Environmental Science U.S., LLC and Seller harmless for any claims relating to such factors.]

[Seller warrants that this product conforms to the chemical description on the label and is reasonably fit for the purposes stated on the Directions for Use when used in accordance with the directions under normal conditions of use. EXCEPT AS WARRANTED BY THIS LABEL, ENVIRONMENTAL SCIENCE U.S., LLC MAKES NO WARRANTIES OF MERCHANTABILITY OR OF FITNESS FOR A PARTICULAR PURPOSE, NOR ANY OTHER EXPRESS OR IMPLIED WARRANTIES WITH RESPECT TO THE SELECTION, PURCHASE, OR USE OF THIS PRODUCT. Any warranties, express or implied, having been made are inapplicable if this product has been used contrary to label instructions, or under abnormal conditions, or under conditions not reasonably foreseeable to (or beyond the control of) seller or Environmental Science U.S., LLC, and buyer assumes the risk of any such use.]

[To the extent consistent with applicable law Environmental Science U.S., LLC or seller shall not be liable for any incidental, consequential or special damages resulting from the use or handling of this product. TO THE EXTENT CONSISTENT WITH APPLICABLE LAW, THE EXCLUSIVE REMEDY OF THE USER OR BUYER, AND THE EXCLUSIVE LIABILITY OF ENVIRONMENTAL SCIENCE U.S., LLC AND SELLER FOR ANY AND ALL CLAIMS, LOSSES, INJURIES OR DAMAGES (INCLUDING CLAIMS BASED ON BREACH OF WARRANTY, CONTRACT, NEGLIGENCE, TORT, STRICT LIABILITY OR OTHERWISE) RESULTING FROM THE USE OR HANDLING OF THIS PRODUCT, SHALL BE THE RETURN OF THE PURCHASE PRICE OF THE PRODUCT OR, AT THE ELECTION OF ENVIRONMENTAL SCIENCE U.S., LLC OR SELLER, THE REPLACEMENT OF THE PRODUCT.]

[This Conditions of Sale and Limitation of Warranty and Liability may not be amended by any oral or written agreement.]

Owned or Licensed U.S. Patents for this product can be found at <https://patent.envu.com>

Envu and the Envu logo are trademarks and Product Name® is a registered trademark owned by Environmental Science U.S., LLC or one of its affiliates.