



OFFICE OF CHEMICAL SAFETY AND POLLUTION PREVENTION

WASHINGTON, D.C. 20460

September 29, 2025

Catherine Rice
Country Manager US – GSS Portfolio
Environmental Science U.S. (Envu)
5000 CentreGreen Way
Cary, NC 27513

Subject: Label Amendment - Registration Review Mitigation for Bifenthrin
Product Name: Talstar HP 0.115% Granular Insecticide
EPA Registration Number: 101563-364
Case Number: 474497
Application Dates: March 24, 2021

Dear Catherine Rice:

The Agency, in accordance with the Federal Insecticide, Fungicide, and Rodenticide Act (FIFRA), as amended, has completed reviewing all the information submitted with your application to support the Registration Review of the above referenced product in connection with the Bifenthrin Interim Decision, and has concluded that your submission is acceptable. The label referred to above, submitted in connection with registration under FIFRA, as amended, is acceptable.

Should you wish to add/retain a reference to the company's website on your label, then please be aware that the website becomes labeling under the Federal Insecticide, Fungicide, and Rodenticide Act and is subject to review by the Agency. If the website is false or misleading, the product would be misbranded and unlawful to sell or distribute under FIFRA section 12(a)(1)(E). 40 CFR 156.10(a)(5) list examples of statements EPA may consider false or misleading. In addition, regardless of whether a website is referenced on your product's label, claims made on the website may not substantially differ from those claims approved through the registration process. Therefore, should the Agency find or if it is brought to our attention that a website contains false or misleading statements or claims substantially differing from the EPA approved registration, the website will be referred to the EPA's Office of Enforcement and Compliance Assurance.

A stamped copy of your labeling is enclosed for your records. This labeling supersedes all previously accepted labeling and must be used at your next label printing. You must submit one copy of the final printed labeling before you release the product for

shipment with the new labeling. In accordance with 40 CFR 152.130(c), you may distribute or sell this product under the previously approved labeling for 12 months from the date of this letter. After 12 months, you may only distribute or sell this product if it bears this new revised labeling or subsequently approved labeling. "To distribute or sell" is defined under FIFRA section 2(gg) and its implementing regulation at 40 CFR 152.3.

If you have any questions about this letter, please contact Meaghan Robertson by phone at (202) 566-1069, or via email at robertson.meaghan@epa.gov.

Sincerely,

A handwritten signature in blue ink that reads "Cathryn Britton". The signature is fluid and cursive, with the first and last names being clearly legible.

Cathryn Britton
Chief, Risk Management and Implementation
Branch V
Pesticide Re-evaluation Division (7508M)
Office of Pesticide Programs

ENCLOSURE: Stamped label

Talstar® HP 0.115% Granular Insecticide

FOR OUTDOOR RESIDENTIAL LAWN, HOME PERIMETER, ORNAMENTAL & FLOWER GARDENS, AND
HOME VEGETABLE GARDEN USE ONLY

EPA Reg. No. 101563-364

EPA Est. No.

ACTIVE INGREDIENT:	By Wt.
Bifenthrin*	0.115%
OTHER INGREDIENTS.....	99.885%
TOTAL	100.000%

*Cis isomers 97% minimum, trans isomers 3% maximum

KEEP OUT OF REACH OF CHILDREN

CAUTION

SEE ADDITIONAL PRECAUTIONARY STATEMENTS ON BACK OF BAG
OR
SEE [BACK PANEL, BOOKLET, SIDE PANEL] FOR ADDITIONAL PRECAUTIONARY STATEMENTS

For Chemical Spill, Leak, Fire, or Exposure, Call Chemtrec (800) 424-9300

For Medical Emergencies Only, Call 1-(800)- 424-9300

[For Product Inquiries, Call 1-800-331-2867]

**IMPORTANT! ALWAYS STORE THIS PRODUCT OUT OF REACH OF PETS AND
DOMESTIC ANIMALS**

PRODUCED FOR

Environmental Science U.S., LLC
5000 CentreGreen Way, Suite 400
Cary, NC 27513

NET WEIGHT [XX] LB/Oz (XX kg)

ACCEPTED

09/29/2025

Under the Federal Insecticide, Fungicide
and Rodenticide Act as amended, for the
pesticide registered under
EPA Reg. No. 101563-364

FIRST AID	
If on Skin or Clothing	<ul style="list-style-type: none">• Take off contaminated clothing.• Rinse skin immediately with plenty of water for 15-20 minutes• Call a poison control center or doctor for treatment advice
[MEDICAL] HOTLINE NUMBER	
Have the product container or label with you when calling a poison control center or doctor, or going for treatment. You may also contact the Environmental Science U.S., LLC Emergency Response Telephone No. 1-800-424-9300 for Emergency Assistance.	
NOTE TO PHYSICIAN	
This product is a pyrethroid. If large amounts have been ingested, milk, cream or other digestible fats and oils may increase absorption and so should be avoided.	

[For Technical Support or information regarding the use of this product, call 1-800-331-2867.]

PRECAUTIONARY STATEMENTS

Hazards to Humans and Domestic Animals

CAUTION

Harmful if absorbed through the skin. Avoid contact with skin, eyes or clothing. Wash thoroughly with soap and water after handling and before eating, drinking, chewing gum, using tobacco or using the toilet. Remove and wash contaminated clothing before reuse.

ENVIRONMENTAL HAZARDS

This pesticide is extremely toxic to fish and aquatic invertebrates. To protect the environment, do not allow pesticide to enter or run off into storm drains, drainage ditches, gutters or surface waters. Applying this product in calm weather when rain is not predicted for the next 24 hours will help to ensure that wind or rain does not blow or wash pesticide off the treatment area. Sweeping any product that lands on a driveway, sidewalk, or street, back onto the treated area of the lawn or garden will help to prevent run off to water bodies or drainage systems.

DIRECTIONS FOR USE

It is a violation of Federal law to use this product in a manner inconsistent with its labeling.

Talstar HP 0.115% Granular Insecticide is a ready-to-use granular insecticide to control various listed insects (including spiders) on and below surfaces of lawns, home perimeters, ornamental & flower gardens, and home vegetable gardens. Immediately after applying, irrigating or watering with 0.1 to 0.5 inches of water generally improves the effectiveness of this product. Read the "Directions for Use" carefully and fully before applying this product.

{Note to Reviewer: On the commercial label, the following do not need to be bulleted.}

- For outdoor use only.
- Do not allow children or pets to enter the area until dry.
- Apply this product directly to the lawn or garden area. Water treated area as directed on this label. Do not water or irrigate to the point of runoff.
- Do not make applications during rain.

NOTE to EPA Product Manager: Text in brackets [] is optional.

- Do not apply when wind speeds are greater than 15 mph.
- Do not allow the product to enter any drain during or after application.
- Application is prohibited directly into sewers or drains, or to any area like a gutter where drainage to sewers, storm drains, water bodies, or aquatic habitat can occur.
- Do not apply the product into fish pools, ponds, streams, or lakes. Do not apply directly to sewers or storm drains, or to any area like a drain or gutter where drainage to sewers, storm drains, water bodies, or aquatic habitat can occur.
- Do not apply by ground within 25 feet of lakes, reservoirs, rivers, permanent streams, marshes or natural ponds, estuaries and commercial fish farm ponds.
- Do not apply directly to impervious horizontal surfaces such as sidewalks, driveways, and patios.
- In **New York State**, this product may NOT be applied to any grass or turf area (lawns) within 100 feet of a water body (lake, pond, river, stream, wetland, or drainage ditch).
- In **New York State**, do make a single repeat application of this product if there are signs of renewed insect activity, but not sooner than two weeks after the first application.

APPLICATIONS TO LAWNS, HOME PERIMETERS, AND ORNAMENTAL AND FLOWER GARDENS

Uniformly apply this product over 1,000 square feet based on targeted pest and associated application rate as listed in the table below by using any gravity or rotary type spreader. Treat when insects first appear and retreat as necessary. Repeat application is necessary only if there are signs of renewed insect activity. Repeat application must be limited to no more than once per seven days. For best results, thoroughly water treated area immediately after application. A [10-][20]-pound bag will treat a X,XXX to X,XXX square feet area.

{Note to reviewer: Maximum use rate of 4 lbs per 1000 ft² is equivalent to 0.2 lbs AI per acre}

Use Talstar HP 0.115% Granular Insecticide [this product] to control the following pests at the application rates listed below:	
Pest	Application Rate
Armyworms (including Fall Armyworm and Lawn Armyworm) Billbugs (including Bluegrass Billbug and Hunting Billbug) Black Turfgrass Ataenius (Adult) Bristletail Caterpillars (including Lucerne moth) Chinch Bugs (including hairy chinch and southern chinch bug) Cockroaches Crickets (including House Cricket, Common Short-tailed Cricket, Indies Short-tailed Cricket, Arizona Cricket, Tropical Cricket, Variable Field Cricket, Fall Field Cricket, Southeastern Field Cricket, Texas Field Cricket, Spring Field Cricket, Northern Wood Cricket, Western Striped Cricket, Eastern Striped Cricket, Sand Field Cricket, Vocal Field Cricket, Southern Wood Cricket) Cutworms (including Black Cutworm, Bronzed Cutworm, Granulate Cutworm, Variegated Cutworm) Dichondra Flea Beetle Earwigs Fiery Skipper Firebrat Frit Fly	1-2 lbs per 1,000 ft ²

NOTE to EPA Product Manager: Text in brackets [] is optional.

Grasshoppers (including easter lubber, southern lubber, red-legged, and two-stiped grasshoppers) Greenbug Ladybeetles (including Convergent Ladybeetle, Seven-spotted Ladybeetle, Two-spotted Ladybeetle, Thirteen-spotted Ladybeetle, Twice-stabbed Ladybeetle, Asian Ladybeetle, Mealybug Ladybird) Leafhoppers Mealybugs Pillbugs Seed Maggots	
Silverfish Springtails Southwestern Corn Borer Sowbugs Striped Grassworm Two-lined Spittle Bugs Webworms (including Sod Webworm, Grass Webworm, Tropical Sod Webworm) Wireworms	1-2 lbs per 1,000 ft ²
Ants (including carpenter, red pavement, odorous, pyramid, black turf, white-footed, crazy, little black, small honey, lawn, cornfield, ghost, thief, acrobat, citronella, big-headed and Allegheny mound) Annual Bluegrass Weevil (<i>Hyperodes</i>) Chiggers Crane Flies (larvae) Fleas (larvae and adults) Ground Beetle (including Pennsylvania ground beetle, Pedunculate ground beetle) Ground Pearl Mites Mole Crickets (including Northern Mole Cricket, Tawny Mole Cricket, Southern Mole Cricket, Short-Winged Mole Cricket) Spiders (including Brown Recluse Spider, Marbled Cellar Spider, Longbodied Cellar Spider, Shortbodied Cellar Spider, Thinlegged Wolf Spider, Burrowing Wolf Spider, Pirate Wolf Spider) Weevils (including Annual Bluegrass)	2 to 4 lbs per 1,000 ft ²
Ants (including argentine, pharaoh (sugar), imported fire ants, and foraging fire ants) Centipedes Millipedes Scorpions Ticks (including Brown Dog Tick) [and ticks that may transmit Lyme Disease]	4 lbs per 1,000 ft ²

Home Invading Insects: Barrier Treatment Around House [Home] Foundation (Outdoors)

How to Apply: Evenly apply a 2-foot band of granules next to the house foundation based on pest list and application rates listed above. Use 0.5 to 2 lbs. for each 500 sq. ft. (2 ft. X 250 ft.). If necessary, repeat applications every 2 weeks only if there are signs of renewed insect activity.

NOTE to EPA Product Manager: Text in brackets [] is optional.

(Bag Size Specific)

SPREADER TIPS				
Spreader	Spreader Settings Pounds of Product per 500/1000 sq ft.			Directions
	0.5/1lb	1/2lbs	2/4lbs	
Scotts® AccuGreen® Drop Spreader	[Insert Spreader Setting Number Here]	[Insert Spreader Setting Number Here]	[Insert Spreader Setting Number Here]	Mow lawn first if grass is tall enough to touch the bottom of the spreader. First apply two header strips. Operate spreader the longest way of the lawn. Overlap wheel marks to ensure uniform feeding. Shut off spreader when you have reached the header strips or stopped.
Scotts® SpeedyGreen® Rotary	[Insert Spreader Setting Number Here]	[Insert Spreader Setting Number Here]	[Insert Spreader Setting Number Here]	Shut off spreader anytime you stop. For complete coverage make each pass about five feet from the previous one, so some overlapping occurs.
[Insert Spreader Brand]	[Insert Spreader Setting Number Here]	[Insert Spreader Setting Number Here]	[Insert Spreader Setting Number Here]	Mow lawn first if grass is tall enough to touch the bottom of the spreader. First apply two header strips. Operate spreader the longest way of the lawn. Overlap wheel marks to ensure uniform feeding. Shut off spreader when you have reached the header strips or stopped.

When using other spreaders, calibrate the spreader settings based on the manufacturer's recommendations.

[Optional Alternate Spreader Setting Table]

Spreader settings			
Spreader Make and Model	1lb/1000sqft	2lb/1000sqft	4lb/1000sqft
SCOTTS			
Edgeguard	3	4 ½	7
Classic Drop Spreader	5	6 ½	9
Handy Green II Handheld Broadcast	2	3	4

HOME VEGETABLE GARDENS

How to Apply

A single application may be applied just prior to planting or after plants emerge and worked into the top 4 to 6 inches of soil. Use 1 lb of product for a 500 sq. ft. area.

Home Vegetable Gardens

Vegetables	Days to wait to harvest	Pests
Sweet Corn	1 Day	Ants, armyworm, cutworms, earwigs, European corn borer, fall armyworm, grasshoppers, southwestern corn borer and weevils.
Tomatoes	1 Day	Ants, cutworms, crickets, earwigs, grasshoppers, grubs, seed maggots, weevils and wireworms.
<p>Green Peas, Edible Pods (Sugar Snap Peas, Snow Peas), Green Beans (Wax Beans, Snap Beans), Dry Beans (Black-eyed Peas, Cowpea)</p> <p>Cucurbit Vegetables Chayote, Citron melon, Cucumber, Edible Gourd Muskmelon (Cantaloupe, casaba, Crenshaw melon, Golden melon, Honeydew Melon, Pineapple melon, Santa Claus melon, Snake melon) Pumpkin, Summer squash (Crookneck, Scallop, Straightneck Zucchini) Winter squash (Butternut, Calabaza, Hubbard including Acorn and Spaghetti) Watermelon</p>	3 Days	Ants, cutworms, crickets, earwigs, grasshoppers, grubs, seed maggots, weevils and wireworms.
Peppers, Eggplant, Head Lettuce, Broccoli, Brussels Sprouts, Cabbages, Cauliflower, Cavalo Broccoli, Chinese Broccoli, Chinese Cabbage, Kohlrabi	7 Days	Ants, cutworms, crickets, earwigs, grasshoppers, grubs, seed maggots, weevils and wireworms.

Home Vegetable Garden Spreader Tips		
Spreader	1 lb of product for 500 sq. ft.	Directions
Scotts® AccuGreen® Drop Spreader	[Insert Spreader Setting Number Here]	Operate spreader the longest way of the garden area. Overlap wheel marks to ensure uniform feeding. Shut off spreader when you have reached the header strips or stopped.
Scotts® SpeedyGreen® Rotary	[Insert Spreader Setting Number Here]	Shut off spreader anytime you stop. For complete coverage make each pass about five feet from the previous one, so some overlapping occurs.
Ferti-lome® YARD-RIGHT Hand Held Spreader	[Insert Spreader Setting Number Here]	<ol style="list-style-type: none"> (1) Make certain setting selector is in closed position. Fill hopper with 1.0 lbs. of product for every 500 sq. ft. of treatment area. (2) Adjust selector to the #2 setting. (3) Apply product evenly over area walking at a steady pace while turning hand crank. If you apply a second application, spread at right angle to first. (4) The spreader will apply a uniform swath 6 ft. to 12 ft. wide. Note the path of the product spread and adjust for the return swath to avoid overlapping product.
[Insert Spreader Brand]	[Insert Spreader Setting Number Here]	Operate spreader the longest way of the garden area. Overlap wheel marks to ensure uniform feeding. Shut off spreader when you have reached the header strips or stopped.

When using other spreaders, calibrate the spreader settings based on the manufacturer's recommendations.

STORAGE AND DISPOSAL

Do not contaminate water, food or feed by storage or disposal.

Pesticide Storage

Store in a cool, dry area. Always store pesticides in the original container. Store away from food and pet food.

Pesticide Disposal and Container Handling

Nonrefillable container. Do not reuse or refill this container.

If empty: Place in trash or offer for recycling if available.

If partly filled: Call your local solid waste agency for disposal instructions. Never place unused product down any indoor or outdoor drain.

[NOTICE: To the extent consistent with applicable law buyer assumes all responsibility for safety and use not in accordance with directions.]

Conditions of Sale and Limitation of Warranty and Liability:

NOTICE: Read the entire Directions for Use and Conditions of Sale and Limitation of Warranty and Liability before buying or using this product. If the terms are not acceptable, return the product at once, unopened, and the purchase price will be refunded.

[The Directions for Use of this product must be followed carefully. It is impossible to eliminate all risks inherently associated with the use of this product. Crop injury, ineffectiveness, or other unintended consequences may result because of such factors as manner of use or application, weather or crop conditions beyond the control of Environmental Science U.S., LLC or Seller. All such risks shall be assumed by Buyer and User, and Buyer and User agree to hold Environmental Science U.S., LLC and Seller harmless for any claims relating to such factors.

Seller warrants that this product conforms to the chemical description on the label and is reasonably fit for the purposes stated on the Directions for Use when used in accordance with the directions under normal conditions of use. TO THE EXTENT CONSISTENT WITH APPLICABLE LAW, ENVIRONMENTAL SCIENCE U.S., LLC MAKES NO WARRANTIES OF MERCHANTABILITY OR OF FITNESS FOR A PARTICULAR PURPOSE, NOR ANY OTHER EXPRESS OR IMPLIED WARRANTIES WITH RESPECT TO THE SELECTION, PURCHASE, OR USE OF THIS PRODUCT. Any warranties, express or implied, having been made are inapplicable if this product has been used contrary to label instructions, or under abnormal conditions, or under conditions not reasonably foreseeable to (or beyond the control of) seller or Environmental Science U.S., LLC, and buyer assumes the risk of any such use.

To the extent allowed by law, Environmental Science U.S., LLC or seller shall not be liable for any incidental, consequential or special damages resulting from the use or handling of this product. THE EXCLUSIVE REMEDY OF THE USER OR BUYER, AND THE EXCLUSIVE LIABILITY OF ENVIRONMENTAL SCIENCE U.S., LLC AND SELLER FOR ANY AND ALL CLAIMS BASED ON BREACH OF WARRANTY, CONTRACT, NEGLIGENCE, TORT, STRICT LIABILITY OR OTHERWISE) RESULTING FROM THE USE OR HANDLING OF THIS PRODUCT, SHALL BE THE RETURN OF THE PURCHASE PRICE OF THE PRODUCT OR, AT THE ELECTION OF ENVIRONMENTAL SCIENCE U.S., LLC OR SELLER, THE REPLACEMENT OF THE PRODUCT.

This Conditions of Sale and Limitation of Warranty and Liability may not be amended by any oral or written agreement.]

[If you do not agree with or do not accept any of directions for use, the warranty disclaimers, or limitations on liability, do not use the product, and return it unopened to the Seller, and the purchase price will be refunded.]

Owned or Licensed U.S. Patents for this product can be found at <https://patent.envu.com>

Envu and the Envu logo are trademarks and Talstar® is a registered trademark owned by Environmental Science U.S., LLC or one of its affiliates.

[Optional Spanish translation]

OPTIONAL MARKETING CLAIMS

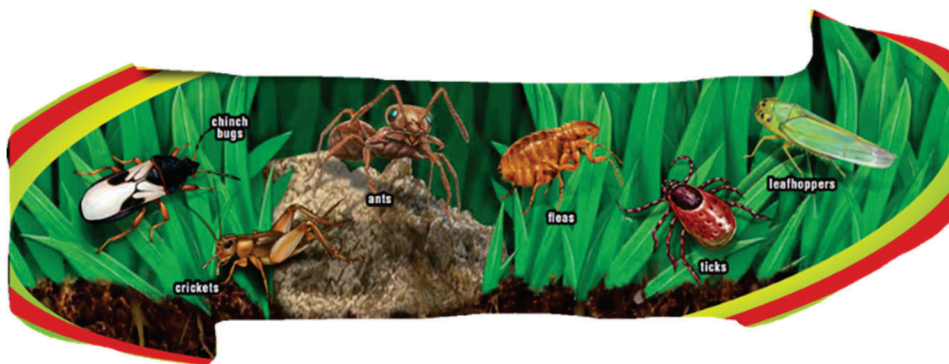
- This product is:
 - Virtually Odor-free
 - (Fast Acting)
 - Easy-to-Use
 - Not harmful to grasses* * when used as directed
 - [Now] Kills more bugs!* *vs. previous formula
 - For use on lawns, ornamentals, home perimeter and flower gardens.

- Kills/controls listed pests/insects/bugs in lawns & landscapes.
- Kills Ants, Fleas, Ticks and other listed pests/insects/bugs.
- Controls/kills listed lawn-destroying/lawn-invading pests/insects/bugs.
- Covers/Treats up to 10,000 sq. ft. [per 10 lbs.]
- Covers/Treats up to XXXX sq. ft. [per 20 lbs.]
- Covers/Treats up to XXXX sq. ft. [per 6 lbs.]
- 10 lb[pounds][packaging][container][bag][:] [Treats][Covers) [up to] 10,000 [XXXX][sq. ft.][square feet)
- X [lb][pound][packaging][container][bag][:] [Treats][Covers) [up to] XXXX [sq. ft.][square feet]
- Creates a pest/insect/bug barrier around your home
- Exceptional Value!
- Kills Chinch Bugs, Mole Crickets, Grubs and Cutworms, plus other listed insects
- Kills [insert listed pests], and many other bugs/insects
- Kills listed surface and sub-surface pests/insects/bugs [that ruin your lawn]
- Kills listed sub-surface insects [so they can't damage your lawn]
- Kills listed surface insects [so you can enjoy your yard]
- Ready-to-use
- Easy to spread
- Provides a barrier of protection around your home
- Guaranteed to work* *or your money back
- Satisfaction Guaranteed or Your Money Back
- Satisfaction Guaranteed.* *Or Your Money Back
- Money Back Guarantee* *If you are not satisfied with this product for any reason, send your written request for a refund to the address at left, together with the original dated store receipt showing the price you paid. Please allow 6-8 weeks for processing.
- The smart solution[s] to listed pest/insect/bug problems
- The smart solution[s] to [insert listed pest(s)] problems
- Solve[s] your listed pest/insect/bug problem[s] fast
- Solve[s] your [insert listed pest(s)] problem[s] fast
- Outdoor use only, (icon)
- Keeps Listed (Lawn) Insects Away for Up to 3 Months (12 weeks)
- Works for up to 3 months
- Kills Listed Tough Lawn Insects [and Keeps Them Away for Up to] [3 Months] [12 weeks]
- Kills listed insects/bugs by contact
- Kills [insert listed pest(s)] by contact!
- Kills in 24 hours
- Kills overnight
- Kills grubs!
- Kills [a wide range of] nuisance and lawn-damaging insects [so you can enjoy your yard] [so you can reclaim your yard]
- Kills up to 100 listed insects
- Kills Ants Outside so They Can't Come Inside!
- Easy to Use Resealable Shaker Bag
- Resealable Bag
- Slide zipper tab to open bag [with simple illustration showing bag with notch to slide and arrow]

NOTE to EPA Product Manager: Text in brackets [] is optional.

- Pull apart to break apart [with simple illustration showing bag pulled apart with arrows]
- Kills Listed Surface & Sub-Surface Insects
- Kills Grubs & Mole Crickets
- Ant & Spider Killer
- Kills Ants and Spiders
- Kills up to 100 listed insects including ants, fleas, spiders, ticks, chinch bugs, mole crickets, grubs and cutworms
- Kill Ants outside so they can't come inside
- Area Treatment
- Perimeter Treatment
- [Icon of House]
- PEEL HERE for Use, Storage and Disposal Directions
- [Easy-to-Use] Shaker Bag! [optional illustration]
- [Easy-to-Use] Shaker [Canister/Bottle]!
- [Bonus/value] size! (for use with larger sizes)
- 25 [35.2] lb Value Size!
- [XX%] [XX lbs] More Free (for use with bonus sizes)
- [XX% better value only for club shoppers] (for use in club channel)
- Exclusive value size [for club shoppers] (for use in club channel)
- Special Club Value!
- [XX lbs] Treats the average yard* up to [XX] times *Average yard size is XXX sq ft.

Optional Marketing Icons:



NOTE to EPA Product Manager: Text in brackets [] is optional.



"TM of United Industries Corporation"



{Note to Reviewer: This would be associated with "Do not allow children or pets to enter the area until dry."}