



U.S. ENVIRONMENTAL PROTECTION AGENCY

Office of Pesticide Programs
Antimicrobials Division (7510P)
1200 Pennsylvania Ave., N.W.
Washington, D.C. 20460

EPA Reg. Number:

92206-6

Date of Issuance:

6/24/19

NOTICE OF PESTICIDE:

☒ Registration
☐ Reregistration
(under FIFRA, as amended)

Term of Issuance:

Conditional

Name of Pesticide Product:

DISIN-VET PLUS

Name and Address of Registrant (include ZIP Code):

Hungnan Lo
Vice President, Product Research and Development
SKV Scientific, Inc.
3546 North Riverside Avenue
Rialto, CA 92377

Note: Changes in labeling differing in substance from that accepted in connection with this registration must be submitted to and accepted by the Antimicrobials Division prior to use of the label in commerce. In any correspondence on this product always refer to the above EPA registration number.

On the basis of information furnished by the registrant, the above named pesticide is hereby registered under the Federal Insecticide, Fungicide and Rodenticide Act.

Registration is in no way to be construed as an endorsement or recommendation of this product by the Agency. In order to protect health and the environment, the Administrator, on his motion, may at any time suspend or cancel the registration of a pesticide in accordance with the Act. The acceptance of any name in connection with the registration of a product under this Act is not to be construed as giving the registrant a right to exclusive use of the name or to its use if it has been covered by others.

This product is conditionally registered in accordance with FIFRA section 3(c)(7)(A). You must comply with the following conditions:

1. Submit and/or cite all data required for registration/reregistration/registration review of your product under FIFRA when the Agency requires all registrants of similar products to submit such data.

Signature of Approving Official:

Eric Miederhoff, Product Manager 31
Regulatory Management Branch I
Antimicrobials Division (7510P)
Office of Pesticide Programs

Date:

6/24/19

- a. DDAC GDCI-069149-30869; 069149-0681; 069166-30875; 069166-1737; 069165-30870; 069165-1736
- b. ADBAC GDCI-069105-30882; 069105-1679

You must comply with all of the data requirements within the established deadlines. If you have questions about the Generic DCI listed above, you may contact the Reevaluation Team Leader (Team 36): <http://www2.epa.gov/pesticide-contacts/contacts-office-pesticide-programs-antimicrobial-division>

2. Make the following label changes before you release the product for shipment:
 - Revise the EPA Registration Number to read, “EPA Reg. No. 92206-6.”
3. Submit one copy of the final printed label for the record before you release the product for shipment.

Should you wish to add/retain a reference to the company’s website on your label, then please be aware that the website becomes labeling under the Federal Insecticide Fungicide and Rodenticide Act and is subject to review by the Agency. If the website is false or misleading, the product would be misbranded and unlawful to sell or distribute under FIFRA section 12(a)(1)(E). 40 CFR 156.10(a)(5) list examples of statements EPA may consider false or misleading. In addition, regardless of whether a website is referenced on your product’s label, claims made on the website may not substantially differ from those claims approved through the registration process. Therefore, should the Agency find or if it is brought to our attention that a website contains false or misleading statements or claims substantially differing from the EPA approved registration, the website will be referred to the EPA’s Office of Enforcement and Compliance.

If you fail to satisfy these data requirements, EPA will consider appropriate regulatory action including, among other things, cancellation under FIFRA section 6(e). Your release for shipment of the product constitutes acceptance of these conditions. A stamped copy of the label is enclosed for your records. Please also note that the record for this product currently contains the following CSFs:

- Basic CSF dated 06/20/2019

The following alternate brand names have been added to the product record:

- Vetericyn Surface
- Comrade
- Comrade-D
- EnviroZoo
- EnviroPet
- Animalia-D
- Kingdom
- Kingdom-D
- Ataraxia
- Ataraxia-D

- InnovaZoo
- Guardian
- Guardian-D
- Sidekick
- SurfaceGuard
- AgPro-D
- BioSecure-D
- BioSecure
- DISIN-VET
- XtraCIDE
- XtraSAN

If you have any questions, you may contact Joseph Daniels at (703) 347-8669 or via email at Daniels.joseph@epa.gov

Enclosure

DISIN-VET PLUS
Disinfectant-Cleaner
STAPHYLOCIDAL • PSEUDOMONACIDAL • SALMONELLACIDAL VIRUCIDAL •
PARVOCIDAL • FUNGICIDAL

SKV Scientific, Inc.
3546 North Riverside Avenue, Rialto, CA 92377
Phone No: +1.888.592.7844
Reg. No. 92206-XX Est. No.
Net Contents: Batch No:

ACCEPTED

06/24/2019

Under the Federal Insecticide, Fungicide
and Rodenticide Act as amended, for the
pesticide registered under
EPA Reg. No. 92206-6

ACTIVE INGREDIENT:

Alkyl (C ₁₄ , 50%; C ₁₂ , 40%; C ₁₆ , 10%) Dimethyl Benzyl Ammonium Chloride	12.24%
Octyl Decyl Dimethyl Ammonium Chloride	9.18%
Dioctyl Dimethyl Ammonium Chloride	4.590%
Didecyl Dimethyl Ammonium Chloride	4.590%

OTHER INGREDIENTS:

69.40%

TOTAL:

100.00%

Si usted no entiende la etiqueta, busque a alguien para que se la explique a usted en detalle. (If you do not understand the label, find someone to explain it to you in detail.)

KEEP OUT OF REACH OF CHILDREN
DANGER/PELIGRO

See top (left) (right) (back) (side) panel (of label) (below) for additional precautionary statements.

FIRST AID

Have the product container or label with you when calling a poison control center or doctor, or going for treatment.

IF ON SKIN OR CLOTHING: Take off contaminated clothing. Rinse skin immediately with plenty of water for 15-20 minutes. Call a poison control center or doctor for treatment advice.

IF IN EYES: Hold eye open and rinse slowly and gently with water for 15-20 minutes. Remove contact lenses, if present, after the first 5 minutes, then continue rinsing eye. Call a poison control center or doctor for treatment advice.

IF SWALLOWED: Call a poison control center or doctor immediately for treatment advice. Have person sip a glass of water if able to swallow. Do not induce vomiting unless told to do so by a Poison Control Center or doctor. Do not give anything by mouth to an unconscious person.

IF INHALED: Move person to fresh air. If person is not breathing, call 911 or an ambulance, then give artificial respiration, preferably mouth-to-mouth if possible. Call a Poison Control Center or doctor for treatment advice.

NOTE TO PHYSICIAN: Probable mucosal damage may contraindicate the use of gastric lavage.

Have the product container or label with you when calling a poison control center or doctor or going for treatment. For general information on product use, etc., call the National Pesticides Information Center (NPIC) at 1-800-858-7378, 8:00 am – 12:00 pm Pacific Time, Monday – Friday; email: npic@ace.orst.edu; or website: <http://npic.orst.edu/>. You may also contact the Poison Control Center at 1-800-222-1222 for emergency medical treatment information.

PRECAUTIONARY STATEMENTS

HAZARDS TO HUMANS AND DOMESTIC ANIMALS

DANGER/PELIGRO. Corrosive. Causes irreversible eye damage and skin burns. May be fatal if swallowed, inhaled, or absorbed through skin. Do not get in eyes, on skin, or on clothing. Do not breathe spray mist. When handling, wear protective eyewear (goggles or face shield). Wear coveralls over long-sleeved shirt and long pants, socks, chemical-resistant footwear, and chemical-resistant gloves. Wear A minimum of a NIOSH-approved particulate filtering facepiece respirator with any R, or P filter; OR a NIOSH-approved elastometric particulate respirator with any R, or P filter; OR a NIOSH-approved powdered air purifying respirator with a HE filters. Wash thoroughly with soap and water after handling and before eating, drinking, chewing gum, using tobacco, or using the toilet. Remove and wash contaminated clothing before reuse.

(If container is 5 gallons or larger the following statement must appear on the label.)

ENVIRONMENTAL HAZARD

This pesticide is toxic to fish. Do not discharge effluent containing [(This product) (PRODUCT NAME)] into lakes, streams, ponds, estuaries, oceans or other waters unless in accordance with the requirements of a National Pollutant Discharge Elimination System (NPDES) permit and the permitting authority has been notified in writing prior to discharge. Do not discharge effluent containing [(This product) (PRODUCT NAME)] into sewer systems without previously notifying the local sewage treatment plant authority. For guidance contact your State Water Board or Regional Office of the EPA.

(If container is equal to or less than 5 gallons, use the following as an alternate to the above statement.)

ENVIRONMENTAL HAZARD

[(This product) (PRODUCT NAME)] is toxic to fish.

PHYSICAL OR CHEMICAL HAZARDS

Combustible. Do not use or store near heat or open flame.
Do not mix with oxidizers, anionic soaps and detergents

PELIGRO: SI NO PUEDE LEER EN INGLES, PREGUNTE A SU SUPERVISOR SOBRE LAS INSTRUCCIONES DE USO APROPIADAS ANTES DE TRABAJAR CON ESTE PRODUCTO.

(Note to Reviewer: This information has been verified per DOT regulations. It is NOT required to be on the label but is being requested by a customer.)

*** Require a potable water rinse for all food contact surfaces before reuse.*

TRANSPORTATION INFORMATION:

DOT Hazard Class: 8 Corrosive

DOT PROPER SHIPPING NAME: Disinfectant Liquid Corrosive (Quaternary Ammonium Compound), 8, UN1903, PGII

[(This product) (PRODUCT NAME)] is:

- Disinfectant – Cleaner –Mildewcidal – Fungicide – Virucide* – (Deodorizer) (Odor Counteractant) (Odor Neutralizer) – For Home, Industrial, School, Dairy, Equine and Poultry/Turkey Farm, Veterinary, Restaurant, Food Handling and Process Areas, Federally Inspected Meat and Poultry Plants, Bar and Kitchen Use and for Harvesting & Handling Equipment.**
- Effective in hard water from 500ppm to 1000ppm hardness (calculated as CaCO₃) in the presence of 10% serum contamination dependent upon the test organism.
- Formulated for effective (Poultry), Chicken, Turkey, Duck, Quail, Ostrich, Emu and other Avian hatchery cleaning and disinfection.
- Formulated for effective Swine Premise cleaning and disinfection.
- Formulated for effective Mushroom Farm cleaning and disinfection.
- Formulated for effective Aquaculture cleaning and disinfection.
- Formulated for effective Homecare – Healthcare – Daycare - Dental [Clinic] – Ophthalmology [Clinic] cleaning and disinfection.**
- Formulated for effective Aviation cleaning and disinfection.
- Formulated to remove the following [non-living] allergens: [cat dander], [cockroach

- matter], [cockroach debris], [cockroach particles], [dog dander] [dust mite debris], [pet dander], [pollen particles].
- 1-step disinfectant for non-food contact surface use.
- Step Saving – Cost Saving – Labor Saving – Time Saving
- Compatible with Automated Dilution Dispensing System.
- Glutaraldehyde free [No Glutaraldehydes] - Phenol free [No phenols]
- No [abrasives] [bleach]
- Citrus scent
- (Product of USA) (Made in USA)

ORGANISM LIST

(Note: For reference use only. This is a list of all organisms covered by this label. Please see appropriate Directions for Use for proper use dilution.)

(Note to Reviewer: Brackets [] indicate that one option within the brackets must be used it that marketing statement is for use in the final label text. Each option within brackets is enclosed in a set of parenthesis (.).)

GENERAL DISINFECTION PERFORMANCE IN MEDICAL and NON-MEDICAL FACILITIES (Households, Schools, Restaurants, Food services, Beverages and Food Processing Plants and Other Non-Medical Facilities):

[(This product) (PRODUCT NAME)] is bactericidal according to the AOAC Use Dilution Test method on hard (inanimate) (environmental) surfaces, modified in the presence of 10% organic serum and up to 1000ppm hard water against:

Pseudomonas aeruginosa (ATCC 15442)

Staphylococcus aureus (ATCC 6538)

[(This product) (PRODUCT NAME)] is bactericidal according to the AOAC Use Dilution Test method on hard (inanimate) (environmental) surfaces, modified in the presence of 10% organic serum and up to 500ppm hard water against:

Salmonella enterica (ATCC 10708)

Klebsiella pneumonia (ATCC 4352)

Escherichia coli O157:H7 (ATCC 35150)

Streptococcus canis (ATCC 43497)

Staphylococcus pseudintermedius (ATCC 49051)

Bordetella bronchiseptica (Kennel Cough) (ATCC 10580)

ANIMAL PREMISE VIRUCIDAL PERFORMANCE: [(This product) (PRODUCT NAME)] was evaluated in the presence of 10% serum and up to 500ppm hard water and found to be effective against the following viruses on hard, non-porous (inanimate) (environmental) surfaces:

Canine Parvovirus (ATCC VR-2017)

Canine Parainfluenza virus (CPiV) (ATCC VR-1573)

Canine Influenza Type A (H3N8) (A/CalNY/105913/08)

FUNGICIDAL PERFORMANCE: [(This product) (PRODUCT NAME)] was evaluated in the presence of 10% serum and up to 500ppm hard water found to be effective against the following fungi on hard, non-porous (inanimate) (environmental) environmental surfaces:

Trichophyton interdigitale (ATCC 9533)

MARKETING CLAIMS

(Note to Reviewer: Marketing claims may be used on the front panel.)

(Note to Reviewer: The following is considered as optional marketing language.)

(Note to Reviewer: Brackets [] indicate that one option within the brackets must be used if that marketing statement is for use in the final label text. Each option within brackets is enclosed in a set of parenthesis (.).)

**** Require a potable water rinse for all food contact surfaces before reuse.**

[(This product) (PRODUCT NAME)] is for use on hard, non-porous (inanimate) (environmental), surfaces in:

1. Central supply, housekeeping & janitorial rooms.

2. EMS & fire facilities, fire stations, emergency vehicles, police cars.
3. Day care centers and nurseries, kindergartens, and preschools.**
4. Restaurants, restaurants and bars, bars, kitchens, cafeterias, taverns, kitchens, fast food operations and food storage areas.**
5. Supermarkets, convenience stores, retail and wholesale establishments, department stores, shopping malls, gift shops, video stores, bookstores, dressing rooms and laundries, photocopy centers, bicycle shops, auto repair centers.**
6. Computer manufacturing sites, toy factories.
7. Food establishments, coffee shops, donut shops, bagel stores, pizza stores, liquor stores.**
8. Crime scenes and funeral homes morgues mortuaries, burial vaults, mausoleums, autopsy rooms, cadaver processing areas.
9. Police stations courthouses, correctional facilities, municipal government buildings, jails, prisons, penitentiaries, correctional institutions, bus stations, train stations.
10. Laboratories, factories, business and office buildings, restrooms, hotels and motels, and transportation terminals, maintenance vehicles.
11. Public restrooms, public facilities, waysides, travel rest areas, shower rooms, bathrooms, shower and bath areas.
12. Hotels, motels, dormitories.**
13. Kitchens, bathrooms and other household areas.**
14. Homes (households), condos, apartments, vacation cottages, summer homes.**
15. Schools and colleges, commercial and industrial sites, churches, classrooms, community colleges, universities, athletic facilities and locker rooms, exercise rooms, exercise facilities, gyms, gymnasiums, fieldhouses.**
16. Cosmetic manufacturing facilities, medical device manufacturing facilities, biotechnology firms, pharmaceutical manufacturing facilities, warehouses.
17. Health clubs, spas, tanning salons, tanning spas/beds, massage/facial salons, hair/nail/pedicure salons, barber/beauty shops, salons, tattoo parlors.**
18. Museums, art galleries, post offices, performance/theater centers, banks, libraries, movie houses, bowling alleys.
19. Recycling centers.
20. Evaporative humidifier water tanks.
21. Campgrounds, playgrounds, recreational facilities, picnic facilities, sports arenas, sports complexes.**
22. Food processing plants, USDA inspected food-processing facilities, federally inspected meat and poultry plants, egg processing plants, farms, equine farms, poultry farms, turkey farms, dairy farms, hog farms, meat/poultry processing plants, meat/poultry producing establishments, mushroom farms (do not apply to the mushroom crop), rendering plants, canneries, caterers, bakeries, meat packing plants, hide and leather processing plants.**
23. Processing facilities for Fish, Milk, Citrus, Fruits, Vegetables, Ice cream, and Potatoes and beverage plants.**
24. Tobacco Plant Premises.
25. Veterinary clinics, animal life science laboratories, animal laboratories, animal research centers, animal quarantine areas, animal holding areas, equine farms, kennels, dog/cat (animal) kennels, animal breeding facilities, breeding establishments, grooming establishments, pet animal quarters, zoos, pet shops, tack shops, operating rooms, washing areas, waiting rooms, examination rooms and other animal care facilities.
26. Farmhouses, barns, sheds, tool sheds, barns cattle barns, swine barns, sheep barns horse barns, brooder houses.
27. Household and automotive garages, boats, hips, barges, watercraft, capers, RV's, trailers, mobile homes, cars, automobiles, trucks, delivery trucks, boxcars, tankers, tank trucks, buses, trains, taxis and airplanes, helicopters.
28. Cruise lines, cruise ships, airline terminals, airports, shipping terminals, public transportation, transportation terminals.
29. Commercial florist and flower shops.
30. Basements, cellars, bedrooms, attics, living rooms and porches.

[(This product) (PRODUCT NAME)] [(when used as directed) (can be used) (is formulated to disinfect) (is formulated for use)] on (washable) hard, non-porous (inanimate) (environmental) surfaces such as:

1. Storage areas.
2. Kitchen equipment such as trash compactors.**
3. Countertops (counter), countertop laminates, stovetops (stoves), sink (bathroom, kitchen),

- tub surfaces, shelves, racks and cards and exterior surfaces of Slurppy® machines, appliances, microwave ovens, refrigerators and ice machines.**
4. Highchairs, baby cribs, diaper changing stations, infant bassinets/cribs/care equipment, folding tables, laundry pails.**
 5. Exhaust fans, refrigerated storage and display equipment, coils and drain pans of air conditioning, refrigeration equipment and heat pump.
 6. Kennel runs, cages, kennel/cages floors, conductive flooring, examination and x-ray tables in animal premises only.
 7. Hatchers, setters, trays, racks, egg flats, walls, floors, ceilings, chick boxes, egg cases, vans and trash containers.
 8. Tanning spas/beds, tanning equipment, footbath surfaces.
 9. Tattoo equipment. (Not for use on needles or other skin piercing instruments)
 10. Hair clippers, cutting implements, plastic rollers, washable nail files.
 11. Shower stalls, shower doors and curtains, bathtubs and glazed tiles, chrome plated intakes, toilets, toilet seats, toilet bowls, toilet bowl surfaces, urinals, empty diaper pails, portable and chemical toilets and latrine buckets, vanity tops, glazed porcelains, glazed tile and restroom fixtures, bathroom fixtures.
 12. Windows and mirrors.
 13. Tables, chairs, desks, folding tables, workstations, bed frames, lifts, washable walls, cabinets, doorknobs and garbage cans/pails, trash barrels, trash cans, trash containers, cuspidors and spittoons.**
 14. Sealed foundations, steps, plumbing fixtures, finished baseboards and windowsills.
 15. Glass, laminated surfaces, metal, stainless steel, glazed porcelains, galvanized metal, glazed ceramic, sealed fiberglass, sealed granite, sealed marble, plastic (such as polycarbonate, polyvinylchloride, polystyrene or polypropylene), sealed limestone, sealed slate, sealed stone, sealed terra cotta, sealed terrazzo, chrome and vinyl, Plexiglass®, vanity tops.**
 16. Enameled surfaces, painted (finished) woodworks, Formica®, linoleum tile, vinyl and plastic upholstery, washable wallpaper.**
 17. Large, inflatable, non-porous plastic and rubber structure such as animals, promotional items, moonwalk, slides, obstacle course play and exercise equipment.
 18. Hard, non-porous (inanimate) (environmental) surfaces of picnic tables and outdoor furniture or Non-wooden picnic tables and outdoor (patio) furniture, except cushions and wood frames.**
 19. Playground equipment.
 20. Athletic training tables, physical therapy tables.
 21. Automobile interiors.
 22. Maintenance equipment.
 23. Telephones and telephone booths.
 24. Hard hats, headphones.
 25. External lenses vision correction including eyeglasses (not for use on contact lenses), protective eyewear, goggles, light lens covers, optical instruments/implements.
 26. Crypton Barrier fabric.

[(This product) (PRODUCT NAME)] contains no phosphorus.

[(This product) (PRODUCT NAME)] is a phosphate-free formulation designed to provide effective cleaning, deodorizing and disinfection in areas where housekeeping is of prime importance in controlling the hazard of cross contamination on treated surfaces.**

This [(container) (bottle)] is made of post-consumer recycled plastic.

- Convenient Trigger Spray.
- Easy to Use.
- Economy size. *(to be used on applicable container)*
- Contains no [(abrasives) (bleach) (phosphates)] (so it won't scratch surfaces).
- Cleans without bleaching.
- Fewer products – no need for separate deodorizer.
- Use (this product) (PRODUCT NAME) on the multi-touch surfaces responsible for cross-contamination.
- Cross contamination is of major housekeeping concern in schools and industry.

[(This product) (PRODUCT NAME)] has been formulated to aid in the reduction of cross-

contamination on treated surfaces in schools and industry.**

[(This product) (PRODUCT NAME)] is a no-rinse disinfectant cleaner that disinfects, cleans and deodorizes in one labor-saving step in the presence of soils on hard non-porous (inanimate) (environmental) non-food contact surfaces.

Use (this product) (PRODUCT NAME) on finished floors, high speed burnished floors, conductive flooring, washable walls, tables, chairs, bathroom bowls, sinks, basins, shower stalls, tubs, glazed tiles, toilets, countertops, stove tops, exterior surfaces of appliances and refrigerators, cabinets, garbage cans, outdoor furniture (except cushions and wood frames), desks, telephones, door knobs and handles, and glass surfaces including windows and mirrors.**

Disinfects, cleans, and deodorizes the following hard, non-porous inanimate surfaces: floors, walls, non-medical metal surfaces, non-medical stainless-steel surfaces, glazed porcelains, plastic surfaces (such as polypropylene, polystyrene, etc.).**

[(This product) (PRODUCT NAME)] is designed for use on (Use daily on) (the following) (Hard, non-porous environmental surfaces): vinyl, painted surfaces, plastic (surfaces), glazed ceramic, glazed porcelain, chrome, stainless steel, aluminum, laminated surfaces and baked enamel surfaces associated with floors, walls, ceilings tables, chair, countertops, telephones, fixtures, glazed tile, toilets, urinals, sinks, shower rooms and locker rooms (areas) – any washable (food and non-food contact) surface where disinfection is required. [(This product) (PRODUCT NAME)]'s non-dulling formula eliminates the time and labor normally required for rinsing. A potable water rinse is required for food contact surfaces. Do not use on glasses, dishes, utensils or interior surfaces of appliances.**

- Concentrate (Concentrated).
- Disinfects (Disinfectant).
- Cleans (Cleaner).
- Deodorizes (Deodorizer).
- Will not harm sealed stone, sealed grout, or glazed tile.

[(This product) (PRODUCT NAME)] is a complete, chemically balanced disinfectant that provides clear use solutions even in the presence of hard water.

[(This product) (PRODUCT NAME)] is an economical concentrate that can be used with a mop and bucket, trigger sprayer, sponge or by soaking.

[(This product) (PRODUCT NAME)] can be applied through foaming apparatus, low-pressure sprayers and fogging (wet misting) systems. Follow manufacturers' instructions when using this equipment.

[(This product) (PRODUCT NAME)] delivers non-acid disinfection performance (in an economical concentrate).

Antibacterial.

Efficacy tests have demonstrated that [(this product) (PRODUCT NAME)] is an effective bactericide, virucide* and fungicide in the presence of organic soil (10% blood serum).

[(This product) (PRODUCT NAME)] is effective against household germs (bacteria).

[(This product) (PRODUCT NAME)] cleans, shines, deodorizes and disinfects all hard, non-porous (household) (animal premise) (inanimate) (environmental) surfaces listed on the label.**

Disinfects and Cleans kitchen surfaces (bathroom surfaces and floors). Kills germs. Kills household bacteria.**

Kills kitchen (bathroom) germs (and viruses).

[(This product) (PRODUCT NAME)] is for use as a disinfectant on hard, non-porous (inanimate) (environmental) surfaces (at 1191ppm active).

Kills at least (99.9% of) (any disinfection organism listed) (above) (below) (on hard, non-porous (animate) (environmental) surfaces).

Kills at least (99.9% of) (household) (kitchen) germs (on (the) floor(s)).

Kills at least (99.9% of) (household) (kitchen) bacteria -and/or- germs ((that get) tracked into your -or- home) (by shoes -and/or- pets -and/or- kids) (from outside) (every day).

Kills at least (99.9% of) (kitchen) (bathroom) (household) bacteria (on (the) floor(s))

Kills -and/or- (help(s)) eliminate(s) -and/or- disinfect(s) -and/or- destroy(s) -and/or- remove(s) -and/or- (help(s)) get(s) rid of -and/or- reduces -and/or- fights -and/or- effective against (99.9% of) (the) (list use site/surface) (bacteria -and/or- viruses) -or- germs.

Kills -and/or- (help(s)) eliminate(s) -and/or- disinfect(s) -and/or- destroy(s) -and/or- remove(s) -and/or- (help(s)) get(s) rid of -and/or- reduces -and/or- fights -and/or- effective against at least (99.9% of) (the) ((bacteria -and/or- viruses) (and other germs)) -or- germs found in -or- on (the) (list use site/surface).

Kills -and/or- (help(s)) eliminate(s) -and/or- disinfect(s) -and/or- destroy(s) -and/or- remove(s) -and/or- (help(s)) get(s) rid of -and/or- reduces -and/or- fights -and/or- effective against at least (99.9% of) (the) ((bacteria -and/or- viruses) (and other germs)) -or- germs found in -or- on (the) (list use site/surface) surfaces your kids -and/or- pets (may) touch every day.

Kills -and/or- (help(s)) eliminate(s) -and/or- disinfect(s) -and/or- destroy(s) -and/or- remove(s) -and/or- (help(s)) get(s) rid of -and/or- reduces -and/or- fights -and/or- effective against at least (99.9% of) (household) ((bacteria -and/or- viruses) (and other germs)) -or- germs (on) (from) (your) (children's) (pet's) toys.

Kills -and/or- (help(s)) eliminate(s) -and/or- disinfect(s) -and/or- destroy(s) -and/or- remove(s) -and/or- (help(s)) get(s) rid of -and/or- reduces -and/or- fights -and/or- effective against at least (99.9% of) (list disinfectant organism) () found -in/or- on (the) (list use site/surface)).

Kills -and/or- (help(s)) eliminate(s) -and/or- disinfect(s) -and/or- destroy(s) -and/or- remove(s) -and/or- (help(s)) get(s) rid of -and/or- reduces -and/or- fights -and/or- effective against at least (99.9% of) virus (found -in/or- on (the) (list use site/surface)).

Kills -and/or- (help(s)) eliminate(s) -and/or- disinfect(s) -and/or- destroy(s) -and/or- remove(s) -and/or- (help(s)) get(s) rid of -and/or- reduces -and/or- fights -and/or- effective against (the) (list use site/surface) (from) at least (99.9% of) (household) ((bacteria -and/or- viruses) (and other germs)).

Kills bacteria on (the) surfaces (your kids -and/or- pets touch every day).

(Kills) (Eliminate(s)) (Remove(s)) (Get(s) rid of) at least (99.9% of) (the) germs -and/or- bacteria -and/or- viruses (in your home -and/or- (office -or- work (place) (area) (environment)) (school) (classroom) (kitchen)).

For use in [(automated dilution systems) (automated) (dilutions systems) (Dilution System Trade Name)].

This detergent/disinfectant has been designed specifically for schools, food processing plants, food service establishments where housekeeping if of prime importance.**

[(This product) (PRODUCT NAME)] is an effective one-step disinfectant-cleaner for use on hard, non-porous, non-food contact surfaces (at 1191ppm active).

[(This product) (PRODUCT NAME)] meets efficacy standards for hard, non-porous (inanimate) (environmental)] non-food contact surfaces for a one-step disinfectant-cleaner.

[(This product) (PRODUCT NAME)] is an effective one-step disinfectant-cleaner in the presence of soils on hard non-porous (inanimate) (environmental) non-food contact surfaces.

Effective disinfectant-cleaner in the presence of soils.

[(This product) (PRODUCT NAME)] is an effective one-step disinfectant-cleaner in the presence of 10% serum contamination on hard non-porous (inanimate) (environmental) non-food contact surfaces.

Cleans and disinfects kitchen surfaces (bathroom surfaces and floors).

[(This product) (PRODUCT NAME)] is a versatile broad-spectrum one-step disinfectant-cleaner on hard non-porous (inanimate) (environmental) non-food contact surfaces formulated for use in Ultrasonic Baths (Ultrasonic cleaning units).

Kills Canine Parvovirus, Canine Parainfluenza virus (CPIV) and Canine Influenza Type A (H3N8).

[(This product) (PRODUCT NAME)] is a versatile cleaner, and broad-spectrum disinfectant formulated for use on batch and therapy equipment (e.g. Whirlpools).

Non-Food Contact disinfectant-cleaner.

For use in:

- Federally inspected meat and poultry plants on all hard, non-porous (inanimate) (environmental) surfaces in inedible product processing areas, non-processing areas and/or exterior areas. All surfaces must be thoroughly rinsed with potable water.
- Federally inspected meat and poultry plants as a floor and wall cleaner for use in all departments. Food products and packaging material must be removed from the room or carefully protected. All surfaces must be thoroughly rinsed with potable water.
- Federally inspected meat and poultry plants as a disinfectant agent for use in all departments. Food products and packaging material must be removed from the room or carefully protected use product in accordance with its label. All surfaces must be thoroughly rinsed with potable water.

Salmonella enterica (*Salmonella*), and *Staphylococcus aureus* (*Staph*) are germs found where food is prepared and stored. [(This product) (PRODUCT NAME)] kills these harmful germs and helps prevent the spread of food borne contamination on treated kitchen surfaces listed on this label. A potable water rinse is required after application on food contact surfaces. [(This product) (PRODUCT NAME)] is not for use on dishes, glassware, eating utensils, or interior surfaces of appliances.

[(This product) (PRODUCT NAME)] cleans by removing dirt, grime and food soils in food preparation and processing areas. Its non-abrasive formula will not harm (scratch) surfaces it cleans, disinfects and eliminates odors leaving surfaces smelling clean and fresh. Use where odors are a problem.**

[(This product) (PRODUCT NAME)] provides long-lasting freshness against tough (pet) odors, such as odors from litter boxes and pet accidents.

[(This product) (PRODUCT NAME)] is a versatile disinfectant for Veterinarian, Veterinarian Practice, Animal Care, Animal Laboratory, and Agricultural and Farm Premise applications.

[(This product) (PRODUCT NAME)] cleans by removing dirt, grime, mold, mildew, blood, urine, fecal matter and other common soils found in animal housing facilities, livestock, swine or poultry facilities, grooming facilities, farms, kennels, pet stores, veterinary clinics, laboratories or other small animal facilities. It (also) eliminates odors leaving surfaces smelling clean and fresh.

[(This product) (PRODUCT NAME)] can be used to disinfect, clean and deodorize terrarium and small animal cages, hot rock, substrate and cage furniture (plastic terrarium ornaments, driftwood, heat caves and water dishes). *(Use on rocks and driftwood not allowed in California.)*

[(This product) (PRODUCT NAME)] cleans, disinfects and deodorizes (hard, non-porous (environmental) (inanimate) surfaces), non-food contact surfaces in one step. [(Its non-abrasive formula is designed for use on) (Use daily on) (Use daily to clean and disinfect)] on (hard, non-

porous (inanimate) (environmental) surfaces): plated or stainless steel, aluminum, chrome, glazed porcelain, glazed tile, laminated surfaces (associated with floors, walls, tables, chairs, countertops, cages, kennels, animal equipment) found in [(animal premises) (barns, pens and stalls) (animal housing facilities)].

[(This product) (PRODUCT NAME)] has been designed for veterinarians, animal groomers, hair stylists, barbers and beauticians, for use in disinfecting and maintaining clippers. It acts as a virucide* against animal pathogens and bactericide while also cleaning. Regular use will help to maintain blades that operate with reduced friction and with smoother clipping action. Will help to prolong equipment life. [(This product) (PRODUCT NAME)] is designed for use in pet salons, animal/human hospitals, barber and beauty shops. When used as directed it will disinfect metal clipper blades as well as many other hard, non-porous (inanimate) (environmental) surfaces.

[(This product) (PRODUCT NAME)] is for Poultry Premise Cleaning and Disinfection (Hatcheries and Breeder/Growout Houses):

Egg Receiving Area	Tray Dumping Area	Chick Processing Area
Egg Holding Area	Chick Holding Area	Chick Loading Area
Setter Room	Hatchery Room	Poultry Buildings
Broiler Houses	Growout Houses	Incubators

[(This product) (PRODUCT NAME)] is for Swine Premise Cleaning and Disinfection:

Farrowing Barns and Areas	Dressing Plants	Blocks
Waterers and Feeders	Loading Equipment	Creep Area
Hauling Equipment	Nursery	Chutes

[(This product) (PRODUCT NAME)] is an effective disinfectant/virucide* to be used in hatchery cleaning, effectively removing (removes) hatchery soils from surfaces, even in hard water up to 500ppm hardness as CaCO₃. Soil emulsifiers, wetting agents, citrus solvent dispersing agents, detergent builders and sequestrants assure good cleaning functions.

[(This product) (PRODUCT NAME)] can be used on any environmental, hard, non-porous surface in the hatchery not harmed by water itself.

[(This product) (PRODUCT NAME)] is for use in the Poultry industry.

Kills Gram-negative and Gram-positive bacteria, fungi and viruses associated with the avian hatchery industry, poultry, swine and livestock premises, laboratory animal facilities and kennels.

[(This product) (PRODUCT NAME)] is an effective disinfectant on hard, non-porous [(animate) (environmental)] surfaces against a broad spectrum of Gram-negative bacteria, Gram-positive bacteria and viruses that are poultry pathogens or that can affect chick quality and hatchability.

[(This product) (PRODUCT NAME)] is an effective, disinfectant/cleaner that helps to limit the spread of contamination from non-treated area to treated area in the hatchery during the actual cleaning process.

[(This product) (PRODUCT NAME)] can be applied by cloth, mop, sponge or sprayer. It kills bacteria and *Trichophyton interdigitale*. It is a potent blend of formulation containing quaternary ammonium compounds.

[(This product) (PRODUCT NAME)] is a one-step disinfectant on hard non-porous (inanimate) (environmental) non-food contact surfaces that is effective against a broad spectrum of bacteria, is virucidal, and inhibits the growth of mold and mildew and their odors when used as directed.

FUNGICIDAL ACTIVITY: [(This product) (PRODUCT NAME)] is effective against *Trichophyton interdigitale* (athlete's foot fungus) (a cause of Ringworm) (a cause of Ringworm of the foot) on inanimate surfaces in locker rooms, dressing rooms, shower and bath areas, and exercise facilities.

Kills Athlete's Foot fungus on bathroom surfaces.

[(This product) (PRODUCT NAME)] is an effective fungicide against *Trichophyton interdigitale* (athlete's foot fungus) (a cause of Ringworm) when used on surfaces in areas such as locker

rooms, dressing rooms, shower and bath areas, exercise facilities.

[(This product) (PRODUCT NAME)] deodorizes by killing microorganisms that cause offensive odors. *(Not for use in California.)*

[(This product) (PRODUCT NAME)] is effective at controlling [(mold and mildew) (odor)] on shower curtains.

[(It) (This product) (PRODUCT NAME)] inhibits the growth of mold and mildew, leaving bathrooms and kitchens clean and fresh smelling.**

Eliminates odors caused by bacteria (and) (mildew) (and) (non-fresh foods).

[(This product) (PRODUCT NAME)] is for non-scratch cleaning of showers and tubs, shower doors and curtains, fixtures and toilet bowls.

[(This product) (PRODUCT NAME)] will not leave grit or soap scum.

[(This product) (PRODUCT NAME)] is a (concentrated), non-acid (bowl and) bathroom cleaner, which cleans, disinfects and deodorizes in one easy step on hard non-porous (inanimate) (environmental) non-food contact surfaces. It cleans, disinfects and deodorizes surfaces by killing many odor-causing microorganisms and mold and mildew. [(its non-abrasive formula is designed for us) (Use daily)] on hard, non-porous (inanimate) (environmental) restroom surfaces: glazed ceramic (restroom) tile, glazed porcelain, chrome, stainless steel and plastic surfaces associated with floors, walls, fixtures, toilets, urinals, sinks, shower rooms and locker rooms.**

[(This product) (PRODUCT NAME)] can be used in work areas such as tool rooms and garages for odor control and light duty cleaning.

Great for use [(on) (in the)] [(kitchen), (bathroom), (floors) (and) (other household areas)]. [(Removes) (eliminates)] odors. Deodorizes. Will not harm most surfaces.**

[(This product) (PRODUCT NAME)] [(maximizes) (improves)] labor results by effectively controlling odors.

When used as directed, [(this product) (PRODUCT NAME)] will deodorize surfaces in restroom and toilet areas, behind and under sinks and counters, garbage cans and garbage storage areas, and other places where bacterial growth can cause malodors.

[(This product) (PRODUCT NAME)] [(controls) (reduces) (eliminates) (neutralizes) (destroys)] odors to make your [(home) (kitchen) (bathroom)] sanitary.**

[(This product) (PRODUCT NAME)] neutralizes musty odors and tough odors from smoke, pet accidents, and spills on contact.

[(This product) (PRODUCT NAME)] is specially formulated to effectively eliminate offensive odors caused by mold and mildew.

[(This product) (PRODUCT NAME)] is effective against odors caused by animal waste, septic tank or sewage backup, smoke and bathroom and kitchen odors.**

[(This product) (PRODUCT NAME)] is for use in evaporative household and commercial humidifiers. Use of [(this product) (PRODUCT NAME)] will control unpleasant [(malodors) (odors)].

Humidifier Bacteria-Algae treatment is a bacteriostat which can control the build-up of bacteria and algae in water tanks of portable, evaporative humidifiers. *(Not for use in CA.)*

[(This product) (PRODUCT NAME)] is a concentrated disinfectant that is effective against a broad spectrum of bacteria, is virucidal and fungicidal, and eliminates odor-causing bacteria when used as directed.

[(This product) (PRODUCT NAME)] deodorizes by killing microorganisms causing odors.

Deodorizes by killing most microorganisms that cause offensive odors.

[(This product) (PRODUCT NAME)] is a complete, chemically balanced deodorizer, and disinfectant providing clear use solutions. It kills bacteria, molds and viruses that cause disease and economic losses. It disinfects in 10% soil load and 500ppm hard water.

[(This product) (PRODUCT NAME)] is a one-step cleaner on hard non-porous (inanimate) (environmental) non-food contact surfaces and [(deodorant) (odor-counteractant) (odor-neutralizer)] designed for [(general cleaning), (and) (disinfecting), (deodorizing) (and controlling mold and mildew)] on hard, non-porous (inanimate) (environmental) surfaces.

[(This product) (PRODUCT NAME)] cleans, disinfects and deodorizes surfaces by killing odor-causing microorganisms and oil and mildew. Its non-abrasive formula is designed for use on (restroom surfaces): glazed ceramic (restroom) tile, glazed porcelain, chrome, stainless steel and plastic surfaces associated with floors, walls, fixtures, toilets, urinals, sinks, shower rooms, and locker rooms.

Kills odor-causing bacteria in the [(kitchen) (bathroom)].

[(Malodor Activity) (Odor) (Counteractancy)] – [(eliminates) (destroys)] odors and odor-causing bacteria on hard non-porous (inanimate) (environmental) surfaces in restroom areas, behind and under sinks and counters, and storage areas (and other hard non-porous (inanimate) (environmental) surfaces) where bacterial growth can cause malodors.

Cleans everyday kitchen messes.**

Cleans non-food contact kitchen surfaces and food preparation areas.

One-step cleaner and disinfectant on hard non-porous (inanimate) (environmental) non-food contact surfaces.

Cleans and shines.

Will not harm most surfaces. For a cleaner, fresher household. Removes stains. Removes dirt. Non-staining. Clear formula.

Cleans everyday kitchen messes like dirt, grease and food stains. Cuts through tough grease and grime.**

Floor cleaner.

[(This product) (PRODUCT NAME)] provides effective cleaning strength that will not dull most metal-interlock floor finishes, and does not require a rinse prior to recoat.

[(This product) (PRODUCT NAME)] is for use in kitchens, bathrooms, and other household areas.**

[(This product) (PRODUCT NAME)] is a multi-surface cleaner, deodorizer and disinfectant. Use on windows, mirrors, and other non-food contact glass surfaces.

Use [(this product) (PRODUCT NAME)] to disinfect non-porous salon/barber tools and instruments such as combs, clippers, brushes, plastic rollers, trimmers, razors, scissors, blades, tweezers, baths, manicure instruments and pedicure instruments.

Use [(this product) (PRODUCT NAME)] to disinfect non-porous salon/barber tools and instruments such as combs, clippers, brushes, plastic rollers, trimmers, razors, scissors, blades, tweezers, baths, manicure instruments, pedicure instruments, and footbath surfaces.

[(This product) (PRODUCT NAME)] is an effective antimicrobial cleaner and disinfectant designed for use by wholesale and retail florists, shippers and green houses.

When used as directed, [(this product) (PRODUCT NAME)] will disinfect hard, non-porous

(inanimate) (environmental) surfaces such as flower buckets, floors and walls of coolers, design and packing benches, and countertops.

[(This product) (PRODUCT NAME)] can be relied on to deodorize coolers, buckets, garbage pails and other areas where obnoxious odors may develop.

Use [(this product) (PRODUCT NAME)] to clean, disinfect and deodorize flower buckets, walls and floors of coolers, shippers, greenhouse packing areas, garbage pails and other areas where obnoxious odors may develop.

[(This product) (PRODUCT NAME)] can be used as a general purpose antimicrobial detergent in florist shops, wholesale florist, shippers, greenhouse packing areas and other commercial floriculture places for efficient cleaning and antimicrobial action against certain bacteria which cause: *(Not for use in California.)*

1. Plugging of stems with slime, which reduces uptake of water for various flower including roses, chrysanthemums, gladioli and tulips.
2. Production of ethylene gas, which may injure blooms of the various sensitive flowers including carnations, snapdragons, some orchids, baby's breath, sweet peas, freesia and alstroemeria.

Use (this product) (PRODUCT NAME) to clean, and disinfect hard non-porous (inanimate) (environmental) surfaces of personal protective safety equipment, protective headgear, hard hats, half mask respirators, full face breathing apparatus, gas masks, goggles, spectacles, headphones, face shields, hearing protectors and hard non-porous surfaces of ear muffs. Rinse all equipment that comes in prolonged contact with skin before reuse with clean warm water (about 120°F), and allow to air dry. (Precaution: Cleaning at 120°F temperature will avoid overheating and distortion of the personal safety equipment that would necessitate replacement.)

Use to (this product) (PRODUCT NAME) clean and disinfect non-medical (i.e. industrial and firefighting) respirators in industrial, commercial and institutional premises.

[(This product) (PRODUCT NAME)] is effective in hard water and in the presence of moderate soil loads, as part of a total disinfection program.

Minimizes spread of contamination on treated surfaces during clean up as it both cleans and disinfects.

Pathogenic fungicide.

Contains sequestering agents to prevent the precipitation of mineral and metals from hard water.

For use in households.**

[(This product) (PRODUCT NAME)] is for use as a disinfectant/virucide* on hard, non-porous (inanimate) (environmental) surfaces.

[(This product) (PRODUCT NAME)] destroys many odors as it cleans and disinfects.

DIRECTIONS FOR USE

(Note to Reviewer: Brackets [] indicate that one option within the brackets MUST be used in the final label text. Each option within brackets is enclosed in a set of parenthesis ().)

(Note to Reviewer: The following statement will be used on all labels.)

*** Require a potable water rinse for all food contact surfaces before reuse.*

It is a violation of Federal Law to use [(This product) (PRODUCT NAME)] in a manner inconsistent with its labeling.

[(This product) (PRODUCT NAME)] is not for use on Medical Device surfaces.

(Note to Reviewer: One of the following statements will be used on all labels with applicable use sites – i.e.

kitchens and food processing areas, except for Fogging directions for use.)

Before using [(this product) (PRODUCT NAME)], food products and packaging materials must be removed from the room or carefully protected. Do not use [(this product) (PRODUCT NAME)] to clean or disinfect utensils, glassware, dishes or interior surfaces of appliances.**

OR

Before use in federally inspected meat and poultry food processing plants and dairies, food products and packaging material must be removed from room or carefully protected.**

OR

Before using [(this product) (PRODUCT NAME)], food products and packaging materials must be removed from the room or carefully protected.**

DISINFECTION PERFORMANCE IN NON-MEDICAL FACILITIES (Households, Schools, Restaurants, Food Services, Dairies, Farms, Beverage and Food Processing Plants and Other Non-Medical Facilities):**

At ½ ounce (of (this product) (PRODUCT NAME)) to one (1) gallon of water use level (or equivalent use dilution) (1191ppm active) and with a 10-minute contact time, [(this product) (PRODUCT NAME)] is bactericidal according to the AOAC Use Dilution test method on hard, non-porous (inanimate) (environmental) surfaces, modified in the presence of 10% organic serum and up to 1000ppm hard water against:

Pseudomonas aeruginosa (ATCC 15442)
Staphylococcus aureus (ATCC 6538)

At ½ ounce (of (this product) (PRODUCT NAME)) to one (1) gallon of water use level (or equivalent use dilution) (1191ppm active) and with a 10-minute contact time, [(this product) (PRODUCT NAME)] is bactericidal according to the AOAC Use Dilution test method on hard, non-porous (inanimate) (environmental) surfaces, modified in the presence of 10% organic serum and up to 500ppm hard water against:

Salmonella enterica (ATCC 10708)

FUNGICIDAL PERFORMANCE: At ½ ounce (of (this product) (PRODUCT NAME)) per (one) (1) gallon of water use level (1191ppm active) (1:256) (or equivalent use dilution), [(this product) (PRODUCT NAME)] was evaluated in the presence of 10% serum and up to 500ppm hard water with a 10-minute contact time and found to be effective against the following fungi on hard, non-porous (inanimate) (environmental) surfaces:

Trichophyton interdigitale (ATCC 9533)

PREPARATION OF DISINFECTION USE SOLUTION: For heavily soiled areas, a preliminary cleaning is required. [(Add) (Mix)] [(½ ounce) ((a) (one) ½ ounce packet)] (of (this product) (PRODUCT NAME)) [(to) (with)] [(one) (1)] gallon of water (1:256) (or equivalent use dilution) (1191ppm active) to disinfect hard, non-porous (inanimate) (environmental) surfaces. Apply use solution [(using) (with) a brush, cloth, mop, sponge, auto scrubber or mechanical spray device sprayer ((hand pump) coarse pump or trigger spray device) or by immersion so as to thoroughly wet surfaces. For sprayer applications, spray 6 – 8 inches from surface. Do not breath spray. Rub with brush, sponge or cloth Treated surfaces must remain wet for 10 minutes. [(Rinse) (Wipe up excel liquid (with a paper towel)) (Allow to air dry)]. [(Rinsing of floors is not necessary unless they are to be waxed or polished.) (** Rinse all treated surfaces that come in contact with food such as countertops, appliances, tables and stovetops with potable water before reuse.)] Do not use [(this product) (PRODUCT NAME)] to clean or disinfect utensils, glassware, dishes or interior surfaces of appliances. Change cloth, sponge or towel frequently to avoid redeposition of soil. [(A fresh solution should be prepared) (Prepare a fresh solution)] when use dilution becomes visibly [(diluted) (soiled) (dirty)]. **(Note to Reviewer: This statement will be used on all labels except for labels of products used exclusively on floors.)**

CLEANING AND DISINFECTION: For heavily soiled areas, a pre-cleaning step is required. For one-step cleaning and disinfection on hard non-porous (inanimate) (environmental) non-food contact surfaces, use a ½ ounce (of (this product) (PRODUCT NAME)) per (one) (1) gallon of water use solutions (or equivalent use dilution) (1191ppm active). Apply use solution to hard non-

porous (inanimate) (environmental) surfaces using a brush, sponge, cloth, mop, auto scrubber or mechanical spray device ((hand pump) coarse pump or trigger spray device) or be immersion so as to thoroughly wet surface. For sprayer applications, spray 6 – 8 inches from surface. Do not breather spray. Rub with brush, cloth or sponge. Allow surfaces to remain wet for 10 minutes. [(Rinse) (Wipe up excess liquid (with a paper towel)) (Allow to air dry)]/ Change cloth, sponge or towels frequently to avoid redeposition of soil. [(A fresh solution should be prepared) when use solution becomes visibly [(diluted) (soiled) (dirty)].

(OR)

FOR USE AS A ONE-STEP CLEANER/DISINFECTANT:

1. Pre-clean heavily soiled non-food contact areas.
2. Apply (use solution of) ½ ounce (of (this product) (PRODUCT NAME)) per (one) (1) gallon (1191ppm active) (or equivalent use dilution) to hard, non-porous (inanimate) (environmental) surfaces using a sponge, brush, cloth, mop, auto scrubber or mechanical spray device ((hand pump) coarse pump or trigger spray device) or by immersion. For spray applications, spray 6 – 8 inches from surfaces. Do not breath spray.
3. Rub with brush, cloth or sponge.
4. To disinfect, all surfaces must remain wet for ten (10) minutes.
5. [(Rinse) (Wipe up excess liquid (with a paper towel)) (Allow to air dry)].
6. Change cloth, sponge or towels frequently to avoid redeposition of soil. [(A fresh solution should be prepared) when use solution becomes visibly [(diluted) (soiled) (dirty)].

**USE DILUTION TABLE FOR GENERAL DISINFECTION / FUNGICIDAL / ANIMAL VIRUCIDAL
– ½ oz/gal only**

Ounces of Product	Amount of Water
0.125 ounce	1 quart
¼ ounce	½ gallon
½ ounce	1 gallon
1 ¼ ounces	2½ gallons
2½ ounces	5 gallons
5.0 ounces	10 gallons

DILUTION TABLE:

For General or Broad Spectrum claims	½ oz/gal. water
For Animal Virucidal claims*	½ oz/gal. water
For Fungicidal claims	½ oz/gal. water

FOOD PROCESSING PREMISES

DIRECTIONS FOR FOOD PROCESSING PLANTS: For use on non-food contact hard non-porous (inanimate) (environmental) surfaces such as floors, walls, tables, garbage cans and disposal areas. Follow the **PREPARATION OF DISINFECTION USE SOLUTION** use direction.

DIRECTIONS FOR FOOD STORAGE AREAS: For use on non-food contact hard non-porous (inanimate) (environmental) surfaces such as shelves, floor, walls and tables. Follow the **PREPARATION OF DISINFECTION USE SOLUTION** use direction.

FOR USE AS A CLEANER/DISINFECTANT IN FOOD PROCESSING PLANTS:

1. For heavily soiled areas, thoroughly clean surface prior to disinfecting.
2. Apply use solution of ½ ounce (of (this product) (PRODUCT NAME)) per (one) (1) gallon of water evenly over hard non-porous (inanimate) (environmental) surfaces using a brush, cloth, mop, sponge, auto scrubber or mechanical spray device ((hand pump) coarse pump or trigger spray device) or by immersion. Be sure to wet all surfaces thoroughly. For spray applications, spray 6 – 8 inches from surface. Do not breathe spray. Rub with brush, cloth or sponge.
3. Allow product to remain on surface for ten (10) minutes.
4. [(Wipe with clean cloth, sponge, or paper towel) (Wipe excess liquid (with a paper towel))]. Change cloth, sponge or towels frequently to avoid redeposition of soil.
5. When disinfecting food contact surfaces used for food preparation, rinse surfaces thoroughly with potable water. [(This product) (PRODUCT NAME)] must not be used to clean the following surfaces: utensils, glassware, dishes or interior surfaces of processing

- equipment.
6. [(A fresh solution should be prepared) when use solution becomes visibly [(diluted) (soiled) (dirty)].

TO DISINFECT FOOD-PROCESSING AND TOBACCO PREMISES: For heavily soiled areas, a pre-cleaning step is required. For use on floors, walls, storage areas and other hard non-porous (inanimate) (environmental) surfaces, [(add) (mix)] [(½ ounce) ((a) (one) ½-ounce packet)] (of (this product) (PRODUCT NAME)) [(to) (with)] [(one) (1)] gallon of water (or equivalent use dilution) (1191ppm active). Apply solution with a brush, mop, cloth, sponge, auto scrubber or mechanical spray device ((hand pump) coarse pump or trigger spray device) or by immersion so as to wet all surfaces thoroughly. For sprayer applications, spray 6 – 8 inches from surface. Rub with brush, cloth, or sponge. Allow surfaces to remain wet for 10 minutes. [(Then remove excess liquid (with a paper towel) and rinse the surface with potable water) (After use, all surfaces in the area must be thoroughly rinsed with potable water)]. Change cloth, sponge or towels frequently to avoid redeposition of soil. [(A fresh solution should be prepared) when use solution becomes visibly [(dilute) (soiled) (dirty)].

TO DISINFECT FOOD SERVICE ESTABLISHMENT FOOD CONTACT SURFACES: For heavily soiled areas, a pre-cleaning step is required. For use on countertops, exterior surfaces of appliances, and tables and other hard non-porous (inanimate) (environmental) surfaces, [(add) (mix)] [(½ ounce) ((a) (one) ½-ounce packet)] (of (this product) (PRODUCT NAME)) [(to) (with)] [(one) (1)] gallon of water (or equivalent use dilution) (1191ppm active). Apply solution with a brush, mop, cloth, sponge, auto scrubber or mechanical spray device ((hand pump) coarse pump or trigger spray device) or by immersion so as to wet all surfaces thoroughly. For sprayer applications, use a coarse spray device. For sprayer applications, spray 6 – 8 inches from surface. Rub with brush, cloth, or sponge. Allow surfaces to remain wet for 10 minutes. [(Then remove excess liquid (with a paper towel) and rinse the surface with potable water) (After use, all surfaces in the area must be thoroughly rinsed with potable water)]. Change cloth, sponge or towels frequently to avoid redeposition of soil. [(A fresh solution should be prepared) when use solution becomes visibly [(dilute) (soiled) (dirty)].

FOR USE ON NON-FOOD CONTACT SURFACES AS A GENERAL DISINFECTANT IN THE BREWERY INDUSTRY: Follow the [(*DIRECTIONS FOR FOOD PROCESSING PLANTS*) (*FOR USE AS A CLEANER/DISINFECTANT IN FOOD PROCESSING PLANTS*) (*TO DISINFECT FOOD-PROCESSING AND TOBACCO PREMISES*)] use directions.

DISINFECTING POTATO STORAGE AREA AND EQUIPMENT: Remove all potatoes prior to disinfection of potato storage area and equipment. Follow the [(*DIRECTIONS FOR FOOD PROCESSING PLANTS*) (*FOR USE AS A CLEANER/DISINFECTANT IN FOOD PROCESSING PLANTS*) (*TO DISINFECT FOOD-PROCESSING AND TOBACCO PREMISES*)] use directions.

MUSHROOM FARM INDUSTRY USE DIRECTIONS

Site Preparation: The first step in any ongoing disinfection program must be the removal of gross contamination and debris. This may be accomplished by using a shovel, broom, or vacuum, depending on the area to be disinfected.

Disinfection: For heavily soiled areas, pre-clean first. Use a ½ ounce (of (this product) (PRODUCT NAME)) per (one) (1) gallon of water (or equivalent use dilution) use solution. Wet all hard non-porous (inanimate) (environmental) surfaces thoroughly. Treated surfaces must remain wet for 10 minutes. Let air dry.

For Heavy Duty Cleaning: When greater cleaning is desired, use a 1 ounce (of (this product) (PRODUCT NAME)) per (one) (1) gallon of water (or equivalent use dilution) use solution. Heavily soiled areas may require repeated cleaning before treatment.

DO NOT APPLY TO THE MUSHROOM CROP, COMPOST OR CASING. Rinse treated surfaces with potable water before they contact the crop, compost or casing.

ANIMAL PREMISES

*(**Note to Reviewer: Use of higher dilution rate is required for additional organisms. The inclusion of hog operation mandates the higher rate.)*

(Note to Reviewer: The following statement will be used with all of the use direction sin this section except terrarium and small animal cage, reptile tank and fogging directions.)

Prior to use (of (this product) (PRODUCT NAME)), cover or remove all food and packaging material before disinfection and remove all animals and feeds from [(premises) (areas to be treated)], animal transportation vehicles (trucks, cars), and enclosures (coops, crates, kennels, stables). Remove all liter, droppings and manure from floors, walls and surfaces of barns, pens, stalls, chutes and other surfaces of facilities and fixtures occupied or traversed by poultry or other animals. Empty all troughs, racks, and other feeding and watering appliances. Thoroughly clean surfaces with soap or detergent and rinse with potable water.

ANIMAL PREMISE VIRUCIDAL* PERFORMANCE: At a ½-ounce (of (this product) (PRODUCT NAME)) per (one) (1) gallon of water use level (1191ppm active) (1:256) (or equivalent dilution), [(this product) (PRODUCT NAME)] was evaluated in the presence of 10% serum and up to 500ppm hard water with a 10-minute contact time and found to be effective against the following viruses on hard, non-porous (inanimate) (environmental) surfaces:

Canine Parvovirus
Canine Parainfluenza virus CPIV
Canine Influenza Type A (H3N8)

VETERINARY CLINICS/ ANIMAL LIFE SCIENCE LABORATORY/ ANIMAL CARE FACILITIES/ ANIMAL RESEARCH CENTERS/ ANIMAL LABORATORY/ ANIMAL QUARANTINE AREAS/ ANIMAL BREEDING FACILITIES/ ZOOS/ PET SHOP/ ANIMAL HUSBANDRY/ KENNELS/ BREEDING AND GROOMING ESTABLISHMENTS/ TACK SHOPS DISINFECTION

DIRECTIONS: REMOVE ALL ANIMALS PRIOR TO TREATMENT. For cleaning and disinfecting (the following) hard, non-porous (inanimate) (environmental) surfaces ((in the following (premises) (areas to be treated)) ((such as) equipment, utensils, instruments, cages, kennels, stables, stalls and catteries, and other hard, non-porous (inanimate) (environmental) surfaces)), [(saturate with) (use) (apply)] a use solution of ½ ounce (of (this product) (PRODUCT NAME)) per (one) (1) gallon of water (or equivalent dilution) (1191ppm active) as to wet thoroughly. Apply by cloth, mop, brush, sponge, auto scrubber or foam gun (device) or mechanical spray device ((hand pump) coarse pump or trigger spray device) or by immersion. For spray applications, spray 6 – 8 inches from surface. Do not breathe spray. Rub with brush, cloth or sponge. Allow surfaces to remain wet for a period of 10 minutes. Immerse all halters and other types of hard, non-porous (inanimate) (environmental) equipment used in handling and restraining animals as well as forks, shovels and scrapers used in removing litter and manure in the use solution. Ventilate buildings and other closet spaces. Do not house animals or employ equipment until treatment has been absorbed, set or dried. Thoroughly scrub all treated feed racks, automatic feeder, waterers, and other treated equipment which dispenses food or water with soap or detergent, and rinse with potable water before reuse. Change cloth, sponge or towels frequently to avoid redeposition of soil. [(A fresh solution should be prepared) when use solution becomes visibly [(dilute) (soiled) (dirty)]].

RENDERING PLANT/ DRESSING PLANT DISINFECTANT/ FUNGICIDE/ VIRUCIDE* DIRECTIONS (DRESSING PLANT AND RENDING PLANT DISINFECTANT/ FUNGICIDE/ VIRUCIDE* DIRECTIONS): [(Saturate with) (Use) (Apply)] disinfecting or virucidal solution of

½ ounce (of (this product) (PRODUCT NAME)) per (one) (1) gallon of water (or equivalent use dilution) (1191ppm active) to hard, non-porous (inanimate) (environmental) surfaces (such as walls, floors, loading platforms, and other hard, non-porous (inanimate) (environmental) surfaces) in poultry and animal dressing plants so as to wet thoroughly. Apply by cloth, mop, brush, sponge, auto scrubber or foam gun (device) or mechanical spray device ((hand pump) coarse pump or trigger spray device) or by immersion. For spray applications, spray 6 – 8 inches from surface. Do not breathe spray. Rub with brush, cloth, or sponge. Surfaces must remain wet for 10 minutes and thoroughly rinse all wetted and cleaned surfaces with potable water before operations are resumed. Change cloth, sponge or towels frequently to avoid redeposition of soil. [(A fresh solution should be prepared) when use solution becomes visibly [(dilute) (soiled) (dirty)]].

TERRARIUM AND SMALL ANIMAL CAGE AND CAGE FURNITURE DISINFECTION: Animals frequently defecate on hot rocks and other hard, non-porous (inanimate) (environmental) cage furniture items inside your terrarium. This can result in high bacteria and ammonia levels that can lead to possible infection/disease in your animals. When used regularly [(this product) (PRODUCT NAME)] can eliminate these high bacteria / ammonia level in your cage and on your cage furniture items. *(Use on rocks not allowed for use in California.)*

1. Remove all animals.
2. Thoroughly clean all surfaces and objects (hot rocks, caves, cage furniture, feeding and watering dishes, and appliances) including the substrate in the terrarium or cage with soap or detergent and rinse with water.
3. Saturate all hard, non-porous (inanimate) (environmental) surfaces (such as floors, walls, cages and other washable hard, non-porous (inanimate) (environmental) surfaces) with the disinfecting and virucidal solutions of ½ ounce (of (this product) (PRODUCT NAME)) per (one) (1) gallon of water (or equivalent use dilution) (1191ppm active) so as to wet thoroughly,
4. Apply by cloth, mop, brush, sponge, auto scrubber or mechanical spray device ((hand pump) coarse pump or trigger spray device) or by immersion. For spray applications, spray 6 – 8 inches from surface. Do not breathe spray. Rub with brush, cloth, or sponge. For smaller surfaces, use a trigger spray bottle to spray all surfaces with solution.
5. Allow surfaces to remain wet for a period of 10 minutes.
6. Saturate gravel as above and let stand for 10 minutes Place in bucket or clean water and swirl for 15 – 30 seconds. Thoroughly air dry before returning to terrarium.
7. Thoroughly scrub all treated surfaces (except gravel) with soap or detergent and rinse with potable water before reuse.
8. Do not return animals to the habitat until it is dry and ventilated.
9. Clean terrarium at least once weekly or more as needed. Change cloth, sponge, or towels frequently to avoid redeposition of soil.
10. [(A fresh solution should be prepared) when use solution becomes visibly [(dilute) (soiled) (dirty)].

Note: Do not apply (this product) (PRODUCT NAME) directly onto the small animal. If [(this product) (PRODUCT NAME)] comes into contact with the small animal's skin, then immediately wash the material off of the animal with lukewarm water. If the small animal ingests [(this product) (PRODUCT NAME)], contact your veterinarian immediately. Substrates for desert terrariums (i.e. Gravel) must be completely dry before returning to terrarium to avoid high humidity levels. Always replace substrate if a foul odor persists.

REPTILE TANK CLEANING AND DISINFECTION DIRECTIONS: Remove all reptiles from the [(enclosure) (tank)] prior to cleaning and disinfecting. Remove all litter or droppings from surfaces. Empty all equipment used for feeding or watering reptiles. Thoroughly clean all surfaces with soap or detergent and rinse with water. [(Saturate with) (Use) (Apply)] disinfecting and virucidal solution of ½ ounce (of (this product) (PRODUCT NAME)) per (one) (1) gallon of water (or equivalent dilution) (1191ppm active) to hard non-porous (inanimate) (environmental) surfaces (of the (enclosure) (tank)). Apply by cloth, mop, brush, sponge, auto scrubber or mechanical spray device ((hand pump) coarse pump or trigger spray device) or by immersion until thoroughly wet. For spray applications, spray 6 – 8 inches from surface. Do not breathe spray. Allow surfaces to remain wet for 10 minutes. [(Wipe dry (with a paper towel)) (Wipe with clean cloth, sponge or paper towel) (Wipe excess liquid (with a paper towel))]. Rinse all surfaces that come in contact with food with potable water before reuse. Allow the [(enclosure) (tank)] to ventilate for a minimum of 10 – 15 minutes before replacing the reptiles. Change cloth, sponge or towels frequently to avoid redeposition of soil. [(A fresh solution should be prepared) when use solution becomes visibly [(dilute) (soiled) (dirty)].

Note: Do not apply (this product) (PRODUCT NAME) directly onto the reptile. If [(this product) (PRODUCT NAME)] comes into contact with the reptile's skin, then immediately wash the material off of the animal with lukewarm water. If the reptile ingests [(this product) (PRODUCT NAME)], contact your veterinarian immediately.

FARM PREMISE DISINFECTION DIRECTIONS

FARM PREMISE USE (Equine, Poultry/ Turkey, Dairy and Hog Farms): REMOVE ALL ANIMALS PRIOR TO TREATMENT. Do not use in milking stalls, milking parlors or milk houses.

[(Saturate with) (Use) (Apply)] ½ ounce (of (this product) (PRODUCT NAME)) per (one) (1) gallon of water (1191ppm active) (or equivalent dilution) to hard non-porous (inanimate) (environmental) surfaces. Allow (hard non-porous (inanimate) (environmental)) surfaces to remain wet for a period of 10 minutes. Apply by cloth, mop, brush, sponge, auto scrubber or foam gun (device) or mechanical spray device ((hand pump) coarse pump or trigger spray device) or by immersion. For spray applications, spray 6 – 8 inches from surface. Do not breathe spray. Immerse all halters and other types of equipment used in handling and restraining animals as well as forks, shovels and scrapers used in removing litter and manure. Ventilate buildings, cars, trucks, boats and other closed spaces. Do not house livestock or employ equipment until treatment has been absorbed, set or dried. Thoroughly scrub all treated feed racks, mangers, troughs, automatic feeders, fountains and waterers and other treated equipment with soap or detergent and rinse with potable water before reuse. Change cloth, sponge or towels frequently to avoid redeposition of soil. [(A fresh solution should be prepared) when use solution becomes visibly [(dilute) (soiled) (dirty)].

(OR)

FOR USE IN EQUINE, DAIRY and HOG FARMS:

1. [(Saturate with) (Use) (Apply)] a ½ ounce (of (this product) (PRODUCT NAME)) per (one) (1) gallon of water (1191ppm active) (or equivalent dilution) use solution to all hard non-porous (inanimate) (environmental) surfaces.
2. Apply by cloth, mop, brush, sponge, auto scrubber or foam gun (device) or mechanical spray device ((hand pump) coarse pump or trigger spray device) or by immersion. For spray applications, spray 6 – 8 inches from surface. Do not breathe spray.
3. Immerse all halters and other types of equipment used in handling and restraining animals as well as forks, shovels and scrapers used in removing litter and manure.
4. Allow all surfaces to remain wet for a period of 10 minutes.
5. Ventilate buildings, cars, trucks, boats and other closed spaces. Do not house livestock or employ equipment until treatment has been absorbed, set or dried.
6. Thoroughly scrub all treated feed racks, mangers, troughs, automatic feeders, fountains and waterers and other treated equipment with soap or detergent and rinse with potable water before reuse.
7. Change cloth, sponge or towels frequently to avoid redeposition of soil.
8. [(A fresh solution should be prepared) when use solution becomes visibly [(dilute) (soiled) (dirty)].

VEAL, CALVING, HOG, CATTLE AND HORSE OPERATIONS: Between depopulations of facilities, cleaning and disinfection of pens, hutches, aisles and other environmental surfaces can be required. Flush soils from these areas. [(Saturate with) (Use) (Apply)] the disinfecting and virucidal solution of ½ ounce (of (this product) (PRODUCT NAME)) per (one) (1) gallon of water (1191ppm active) to hard non-porous (inanimate) (environmental) surfaces and allow to remain wet for a period of 10 minutes. Apply by cloth, mop, brush, sponge, auto scrubber or foam gun (device) or mechanical spray device ((hand pump) coarse pump or trigger spray device) or by immersion. For spray applications, spray 6 – 8 inches from surface. Do not breathe spray. Immerse all halters, ropes and other types of hard non-porous (inanimate) (environmental) equipment used in handling and restraining animals as well as forks, shovels and scarpers used in removing litter and manure. Ventilate buildings, cars, trucks, boats and other closed spaces. Do not house livestock or employ equipment until treatment has been absorbed, set or dried. Thoroughly scrub all treated feed racks, mangers, troughs, automatic feeders, fountains and waterers and other treated equipment with soap or detergent and rinse with potable water before reuse. Change cloth, sponge or towels frequently to avoid redeposition of soil. [(A fresh solution should be prepared) when use solution becomes visibly [(dilute) (soiled) (dirty)].

FOR USE IN THE TREATMENT OF ANIMAL HOUSING FACILITIES:

1. [(Apply) (Use) (Saturate with)] ½ ounce (of (this product) (PRODUCT NAME)) per (one) (1) gallon of water (or equivalent dilution) (1191ppm active) to all hard non-porous (inanimate) (environmental) surfaces (such as floors, walls, cages and other washable hard, non-porous (inanimate) (environmental) surfaces).
2. Apply by cloth, mop, brush, sponge, auto scrubber or foam gun (device) or mechanical spray device ((hand pump) coarse pump or trigger spray device) or by immersion. For spray applications, spray 6 – 8 inches from surface. Do not breathe spray. For smaller surfaces, use a coarse trigger spray bottles to spray all surfaces with solution until wet.
3. Immerse all halters and other types of hard non-porous (inanimate) (environmental) equipment used in handling and restraining animals as well as forks, shovels, scarpers used in removing litter and manure.

4. All treated surfaces remain wet for 10 minutes.
5. Ventilate buildings, cars, trucks, boats and other closed spaces. Do not house [(animals) (livestock)] or employ equipment until [(treatment has been absorbed, set and dried) (product has dried)].
6. Thoroughly scrub all treated feed racks, mangers, troughs, automatic feeders, fountains, waterers and other treated equipment with soap or detergent and rinse with potable water before reuse.
7. Change cloth, sponge or towels frequently to avoid redeposition of soil.
8. [(A fresh solution should be prepared) when use solution becomes visibly [(dilute) (soiled) (dirty)]].

POULTRY (AND SWINE) PREMISE CLEANING AND DISINFECTION

Site Preparation: REMOVE ALL ANIMALS AND FEED FROM PREMISE, VEHICLES AND ENCLOSURES BEFORE ALL APPLICATIONS/USES FOR ALL LIVESTOCK PREMISES. The first step in any on-going disinfection program is the removal of gross contamination and debris. This may be accomplished using a shovel, broom, or vacuum depending on the area to be disinfected. The efficacy of even the most efficient germicidal cleaner is reduced in the presence of heavy organic matter. Once the heavy debris is eliminated thoroughly clean all surface with soap or detergent and rinse with water.

APPLICATIONS AND USE DILUTION POULTRY (AND SWINE) PREMISE (DISINFECTION / FUNGICIDE / VIRUCIDE* OF POULTRY / TURKEY EQUIPMENT, SINE QUARTERS, LIVESTOCK FARMS, EQUINE WATERS, ANIMAL QUARTERS AND KENNEL DIRECTIONS): [(Use) (Saturate with) (Apply)] ½ ounce (of (this product) (PRODUCT NAME)) per (one) (1) gallon of water (1:256) (1191ppm active) (or equivalent dilution) to all hard non-porous (inanimate) (environmental) surfaces. Apply by cloth, mop, brush, sponge, auto scrubber or mechanical spray device ((hand pump) coarse pump or trigger spray device) or by immersion. For spray applications, spray 6 – 8 inches from surface. Do not breathe spray. Allow surfaces to remain wet for 10 minutes. Immerse all halters and other types of hard. Non-porous (inanimate) (environmental) equipment used in handling and restraining animals, as well as forks, shovels and scarpers used in removing litter and manure. After application, ventilate buildings, coops and other closed spaces. Do not house poultry or other animals or employ equipment until treatment has been absorbed, set or dried. Thoroughly scrub (a treated equipment [OR] feed racks, troughs, automatic feeders, fountains and waterer and other treated equipment) which may contact food or water with soap or detergent, and rinse with potable water before reuse. Change cloth, sponge or towels frequently to avoid redeposition of soil. [(A fresh solution should be prepared) when use solution becomes visibly [(dilute) (soiled) (dirty)]].

HATCHERIES: Use ½ ounce (of (this product) (PRODUCT NAME)) per (one) (1) gallon of water use solution (1191ppm active) (or equivalent dilution). Apply to hard non-porous (inanimate) (environmental) surfaces such as hatchers, setters, (plastic) trays, (plastic) racks, egg flats, walls, floors, ceilings, chickboxes, egg cases, treat containers, carts, sexing tables, delivery trucks and other hard non-porous (inanimate) (environmental) surfaces. Apply by cloth, mop, brush, sponge, auto scrubber or foam gun (device) or mechanical spray device ((hand pump) coarse pump or trigger spray device) or by immersion. For spray applications, spray 6 – 8 inches from surface. Do not breathe spray. Leave all treated surfaces [(exposed to solution) (wet)] for 10 minutes or more. Rinse treated surfaces with potable water before reuse. Allow surface to air dry. Change cloth, sponge or towels frequently to avoid redeposition of soil. [(A fresh solution should be prepared) when use solution becomes visibly [(dilute) (soiled) (dirty)]].

VEHICLES: Clean all vehicle hard non-porous (inanimate) (environmental) surfaces including mats, crates, cabs, and wheels with high-pressure water and [(this product) (PRODUCT NAME)]. Use ½ ounce (of (this product) (PRODUCT NAME)) per (one) (1) gallon of water (1191ppm active) (or equivalent use dilution). Apply by cloth, mop, brush, sponge, auto scrubber or foam gun (device) or mechanical spray device ((hand pump) coarse pump or trigger spray device) or by immersion. For spray applications, spray 6 – 8 inches from surface. Do not breathe spray. Leave all treated surfaces exposed to solution for 10 minutes or more and allow to air dry. Change cloth, sponge or towels frequently to avoid redeposition of soil. [(A fresh solution should be prepared) when use solution becomes visibly [(dilute) (soiled) (dirty)]].

AIR WASHERS AND INDUSTRIAL SCRUBBING SYSTEMS/RECIRCULATING

COOLING AND PROCESS WATER SYSTEMS:

[(This product) (PRODUCT NAME)] is used in industrial air washers and air washer systems which have mist-eliminating components.

Add (this product) (PRODUCT NAME) at the application rates described below to a water treatment system at a convenient point of uniform mixing such as a basin area. Addition is made intermittently (Slug Dose) or continuously. Badly fouled systems are shock treated with (this product) (PRODUCT NAME). Under these conditions, blowdown must be discontinued for up to 24 hours.

[(This product) (PRODUCT NAME)] is used in industrial process water systems that contain ultra-filtration units and nonmedical reverse osmosis membranes (Where approved for compatibility by the membrane manufacturer) and associated distribution systems.

Intermittent (Slug Dose) Method:

Initial Dose: When the system is noticeably fouled, apply 2.0 to 4.0 ounces of this product (PRODUCT NAME) per 100 gallons of water in the system. Repeat until control is achieved.

Subsequent Dose: When microbial control is evident, add 1.0 to 3.0 fluid ounces of this product (PRODUCT NAME) per 100 gallons of water in the system weekly, or as needed to maintain control. Badly fouled systems must be cleaned before treatment is begun.

Continuous Feed Method:

Initial Dose: When the system is noticeably fouled, apply 2.0 to 4.0 ounces of this product (PRODUCT NAME) per 100 gallons of water in the system. Repeat until control is achieved.

Subsequent Dose: Maintain this treatment level by starting a continuous feed of 1.0 to 4.0 ounces per 100 gallons of water. Badly fouled systems must be cleaned before treatment is begun.

FOR USE IN LIVESTOCK, POULTRY AND TURKEY HOUSES:

1. REMOVE LIVESTOCK PRIOR TO APPLICATIONS.
2. [(Saturate with) (Use) (Apply)] ½ ounce (of (this product) (PRODUCT NAME)) per (one) (1) gallon of water (or equivalent dilution) (1191ppm active) to all hard non-porous (inanimate) (environmental) surfaces and allow surface to remain wet for a period of 10 minutes.
3. Apply by cloth, mop, brush, sponge, auto scrubber or foam gun (device) or mechanical spray device ((hand pump) coarse pump or trigger spray device) or by immersion. For spray applications, spray 6 – 8 inches from surface. Do not breathe spray.
4. Immerse all halters and other types of hard non-porous (inanimate) (environmental) equipment used in handling and restraining animals as well as forks, shovels, scarpers used in removing litter and manure.
5. Ventilate buildings, cars, trucks, boats and other closed spaces. Do not house livestock or employ equipment until treatment has been absorbed, set and dried.
6. Thoroughly scrub all treated feed racks, mangers, troughs, automatic feeders, fountains, waterers and other treated equipment with soap or detergent and rinse with potable water before reuse.
7. Change cloth, sponge or towels frequently to avoid redeposition of soil.
8. [(A fresh solution should be prepared) when use solution becomes visibly [(dilute) (soiled) (dirty)].

DISINFECTANT DIRECTIONS FOR CHICK VANS, EGG TRUCKS, HATCHERY and FARM

VEHICLES: Clean all vehicle surfaces including mats, crates, cabs, and wheels and other hard non-porous (inanimate) (environmental) surfaces with high-pressure water and [(this product) (PRODUCT NAME)]. [(Saturate with) (Use) (Apply)] ½ ounce (of (this product) (PRODUCT NAME)) per (one) (1) gallon of water (or equivalent use dilution) (1191ppm active) to treat all vehicle's hard non-porous (inanimate) (environmental) surfaces. Leave all treated surfaces [(exposed to disinfectant solution) (wet)] for 10 minutes or more. Apply by cloth, mop, brush, sponge, auto scrubber or foam gun (device) or mechanical spray device ((hand pump) coarse pump or trigger spray device) or by immersion. For spray applications, spray 6 – 8 inches from surface. Do not breathe spray. Leave all treated surfaces exposed to solution for 10 minutes or more and allow to air dry. Change cloth, sponge or towels frequently to avoid redeposition of soil. [(A fresh solution should be prepared) when use solution becomes visibly [(dilute) (soiled) (dirty)].

DISINFECTANT/ VIRUCIDAL DIRECTIONS TO TREAT HARD NON-POROUS, NON-FOOD CONTACT SURFACES OF AUTOMATIC TRAY, RACK, AND BUGGY WASHERS: Mix a solution containing ½ ounce (of (this product) (PRODUCT NAME)) per (one) (1) gallon of water (1:256) (or equivalent use dilution) (1191ppm active). Treat all hard, non-porous, non-food contact (inanimate)

(environmental) surfaces of automated trays, racks, buggy washers with solution for 10 minutes. Apply by cloth, mop, brush, sponge, auto scrubber or foam gun (device) or mechanical spray device ((hand pump) coarse pump or trigger spray device) or by immersion. For spray applications, spray 6 – 8 inches from surface. Do not breathe spray. Thoroughly clean all surfaces with soap or detergent and rinse with water before reuse. Change cloth, sponge or towels frequently to avoid redeposition of soil. [(A fresh solution should be prepared) when use solution becomes visibly [(dilute) (soiled) (dirty)].

DISINFECTANT/ VIRUCIDAL DIRECTIONS TO TREAT HARD NON-POROUS, NON-FOOD CONTACT SURFACES IN EGG RECEIVING AND EGG HOLDING AREAS: Mix a solution containing ½ ounce (of (this product) (PRODUCT NAME)) per (one) (1) gallon of water (1:256) (or equivalent use dilution) (1191ppm active). [(Saturate with) (Use) (Apply)] the solution to hard non-porous (inanimate) (environmental) surfaces and allow to remain wet for a period of 10 minutes. Apply by sponge, cloth, mop, brush, auto scrubber or foam gun (device) or mechanical spray device ((hand pump) coarse pump or trigger spray device) or by immersion. For spray applications, spray 6 – 8 inches from surface. Do not breathe spray. Thoroughly clean all surfaces with soap or detergent and rinse with water before reuse. Change cloth, sponge or towels frequently to avoid redeposition of soil. [(A fresh solution should be prepared) when use solution becomes visibly [(dilute) (soiled) (dirty)].

MEAT PACKING PLANTS: [(Use) (Apply)] [(this product) (PRODUCT NAME)] to disinfect hard, non-porous (inanimate) (environmental) surfaces associated with the following sites: livestock, vehicles and holding pens, receiving areas and delivery chutes, slaughter areas and conveyors, hand, rub and guide rails, post knock cabinets, stands and flooring surfaces, chains and moving process lines, surfaces of equipment for hide operations consisting of brine curing, hide transfer in surfaces, chutes, conveyors, tallow and animal feed production hard, non-porous (inanimate) (environmental) surfaces, processed products and offal equipment surfaces, fabrication and processing areas covering cold storage areas, all stainless steel cut out and prep tables, counter tops, conveyors, chains, tables, floors, walls and all stainless surfaces. For application, saturate all surfaces with solution and scrub to loosen all soils. Use ½ ounce (of (this product) (PRODUCT NAME)) per (one) (1) gallon of water (1191ppm active) (or equivalent use dilution). Apply by cloth, mop, brush, sponge, auto scrubber or foam gun (device) or mechanical spray device ((hand pump) coarse pump or trigger spray device) or by immersion. For spray applications, spray 6 – 8 inches from surface. Do not breathe spray. Rub with brush, cloth, or sponge Surfaces must remain wet for 10 minutes then thoroughly rinse with potable water before operations are resumed. All treated equipment that will contact animal fed or food surfaces must be thoroughly scrubbed with soap or detergent then rinsed with potable water before reuse. Change cloth, sponge or towels frequently to avoid redeposition of soil. [(A fresh solution should be prepared) when use solution becomes visibly [(dilute) (soiled) (dirty)].

HIDE/LEATHER PROCESSING PLANTS: To use as a disinfectant/fungicide on hard, non-porous (inanimate) (environmental) surfaces, add ½ ounce (of (this product) (PRODUCT NAME)) per (one) (1) gallon of water (1191ppm active) (or equivalent use dilution). The product can be used on hide storage bins, holding tanks, chill tanks, serpentine tanks and chains, machine and tannery equipment surfaces, conveyors and trolleys, hide press, grading and storage areas and scales, etc. Apply use solution with a brush, cloth, mop, sponge, auto scrubber or foam gun (device) or mechanical spray device ((hand pump) coarse pump or trigger spray device) or by immersion to thoroughly wet surfaces. For spray applications, spray 6 – 8 inches from surface. Do not breathe spray. Treated surfaces must remain wet for 10 minutes. [(Wipe up excess liquid (with a paper towel)) (Allow to air dry)]. Change cloth, sponge or towels frequently to avoid redeposition of soil. [(A fresh solution should be prepared) when use solution becomes visibly [(dilute) (soiled) (dirty)].

TREATMENT OF HATCHERY ROOMS, INCUBATORS AND HATCHERS, POULTRY HOUSES AND LIVESTOCK BUILDINGS BY FOGGING:

All surfaces must be cleaned and disinfected in accordance with label directions prior to fogging. Fogging is not used as a sanitizing treatment. Close room off so fog is confined to room to be treated. Hatchery ventilation systems must remain on during fogging. Wear a dust/mist respirator when mixing the use solution and pouring it into the fogging apparatus.

A) HATCHERY ROOMS:

Vacate all personnel from hatchery room to be fogged. Close room off so fog is confined to the

hatchery room to be treated. Prepare a stock solution of one (1) part (this product) (Product Name) to forty-two (42) parts of water (3 fluid ounces (this product) (Product Name) to 125 fluid ounces of water). Fog this solution at a rate of 3.8 ounces per 10,000 cubic feet for the fogging times specified in the chart below. Contact your technical service representative to determine the recommended fogging schedule. Do not allow people to breathe or contact the fog. When fogging (this product) (Product Name), Fogging Time and Personal Protective Equipment (PPE) requirement are determined by the following air exchange rates:

AIR EXCHANGE RATE PER HOUR (ACH) TABLE:

ACH for Hatchery Rooms, Incubators, Hatchers	Fogging Time	Fogging Time Re-Entry Intervals (REI) after which no PPE required
8 air exchanges/hour	5 minutes	25 minutes
12 air exchanges/hour	7.5 minutes	15 minutes
16 air exchanges/hour	10 minutes	10 minutes
20 air exchanges/hour	12.5 minutes	10 minutes
24 air exchanges/hour	15 minutes	10 minutes

Under no circumstances must the hatchery room be entered by unprotected persons before the Re-Entry Interval (REI) specified in the ACH table has elapsed. If the hatchery room must be entered, before the stated REI interval, then the individuals entering the room must wear a long sleeve shirt and pants and a NIOSH-approved particulate filtering facepiece respirator with any R, or P filter; OR a NIOSH-approved elastometric particulate respirator with any R, or P filter; OR a NIOSH-approved powdered air purifying respirator with a HE filters.

B) INCUBATORS AND HATCHERS:

Only for treatment of setters and hatchers after poultry/chicks/eggs have been removed. Not for treatment of hatchers which contain chicks/eggs. Prepare a stock solution of one (1) part (this product) (Product Name) to forty-two (42) parts of water (3 fluid ounces (this product) (Product Name) to 125 fluid ounces water). Fog this solution at a rate of 3.8 ounces per 10,000 per cubic feet for the fogging times specified in the chart above, into setters and hatchers immediately after transfer. Repeat daily. Discontinue hatcher treatments approximately 24 hours before pulling the hatch. Do not allow people to contact or breathe this fog and do not enter machines until the fog has been exhausted. To do this, install permanent fogging nozzles in setters and hatchers and use an air compressor to disperse the solution as a fog. It is also satisfactory to fog setters and hatchers with a 1:1000 solution of (this product) (Product Name). If this is done, fog for 30 – 90 seconds once per hour or once every two hours.

C) POULTRY HOUSES AND LIVESTOCK BUILDINGS:

After the house has been depopulated and cleaned as in “Directions for use in farm premises, equine facilities, veal barns, ratite facilities, calf pens and vehicles”, double check to be sure all people, poultry, livestock and pets have vacated the building. Close all windows, doors, curtains, etc. making the house as closed as possible. Prepare a stock solution of one (1) part (this product) (Product Name) to four (4) parts water (25 fluid ounces (this product) (Product Name) to 100 fluid ounces water). Insert the nozzle of the fogging device through a suitable opening in the room. With the setting on maximum output, fog 125 fluid ounces for each 1000 cubic yards. The Fogger itself is placed just inside the door of the building to be treated, or the nozzle of the fogger is inserted through a suitable opening in the door or building. The opening must be large enough to accommodate the nozzle. After fogging, the building must be kept closed for twenty-four (24) hours. After twenty-four (24) hours, the fog must have settled and the house can now be opened and aired. The house must be opened for a minimum of twenty-four (24) hours before it is repopulated with poultry or livestock.

NOTE FOR POULTRY HOUSES AND LIVESTOCK BUILDINGS: The generated fog is very irritating to eyes, skin, and mucous membranes. Under no circumstances must a room or building be entered by anyone until the fog has completely settled. A re-entry time of two (2) hours is required. If the building or room must be entered, then the individuals entering the building or room must wear a self-contained face piece respirator approved by NIOSH, goggles, long sleeve shirt and pants. If feeders and waterers were not removed from the premises during treatment, or were not adequately covered to prevent contact with the treatment, they must be washed with detergent

and water before use for poultry or livestock.

BARBER / SALON

DISINFECTANT/ FUNGICIDE FOR BARBER/ SALON TOOLS DIRECTIONS: Immerse pre-cleaned hard (non-porous (inanimate) (environmental) barber/salon tools such as combs, brushes, plastic rollers, razors, clipper and trimmer blades, tweezers, manicure/pedicure tools and scissors in a ½ ounce (of (this product) (PRODUCT NAME)) per (one) (1) gallon of water (1:256) (or equivalent use dilution) (1191ppm active). Completely immerse instruments and tools for at least 10 minutes. Rinse thoroughly and dry before use. [(A fresh solution should be prepared) when (immersion (tank) (bowl) (sink)) use solution becomes cloudy or soiled.

FOR USE TO CLEAN AND DISINFECT BARBER AND BEAUTY/ MANICURE INSTRUMENTS AND TOOLS:

1. Pre-clean heavily soiled items.
2. Completely immerse pre-cleaned combs, scissors, plastic rollers, clipper blades, razors, manicure implements and other hard non-porous (inanimate) (environmental) instruments in the use solution of ½ ounce (of (this product) (PRODUCT NAME)) per (one) (1) gallon of water (or equivalent use dilution) (1191ppm active) so that surfaces remain wet for ten (10) minutes.
3. Rinse surfaces thoroughly with water and let air dry before reuse.
4. [(A fresh solution should be prepared) when (immersion (tank) (bowl) (sink)) use solution becomes visibly [(diluted) (soiled) (dirty)].

DISINFECTING GROOMING CLIPPERS: Remove hair, dandruff and dust particles prior to disinfecting the blades. Turn the clipper off occasionally during use and spray between the teeth of blades a use solution of ½ ounce ((of (this product) (PRODUCT NAME)) per (one) (1) gallon of water (or equivalent use dilution) (1191ppm active). Allow hard non-porous (inanimate) (environmental) surface to remain wet for at least 10 minutes. Rinse surfaces thoroughly with water. Then wipe dry with a clean soft cloth. [(A fresh solution should be prepared) when (immersion (tank) (bowl) (sink)) use solution becomes visibly [(diluted) (soiled) (dirty)].

CLEANING HAIR CLIPPERS AND ELECTRIC SHEARS: When clipper/shear is running, hold in the downward position and spray a ½ ounce ((of (this product) (PRODUCT NAME)) per (one) (1) gallon of water (or equivalent use dilution) (1191ppm active) directly onto the blades two or three times to thoroughly wet the blades. Do not spray on the clipper case or drip into clipper housing. Turn off clipper/shear. Allow hard non-porous (inanimate) (environmental) surface to remain wet for at least 10 minutes. Rinse surfaces thoroughly with water. Then wipe dry with a clean soft cloth. Lubricate as per clipper/shear manufacturer's instructions. [(A fresh solution should be prepared) when (immersion (tank) (bowl) (sink)) use solution becomes visibly [(diluted) (soiled) (dirty)].

CLEANING BARBER/ SALON SHEARS AND OTHER IMPLEMENTS: Spray shear/implement until thoroughly wet. Wipe away visible debris using a soft bristle brush or cloth. Turn off clipper/shear. Immerse pre-cleaned shear/implement into a container of ½ ounce (of (this product) (PRODUCT NAME)) per (one) (1) gallon of water (or equivalent use dilution) (1191ppm active) for at least 10 minutes. Rinse surfaces thoroughly with water. Remove shear/implement and wipe dry. [(A fresh solution should be prepared) when (immersion (tank) (bowl) (sink)) use solution becomes visibly [(diluted) (soiled) (dirty)].

(Note to Reviewer: The following statement will be used with all above Barber/Salon Directions for Use).

Note: Plastics instruments can remain immersed until ready to use. Stainless Steel shears and other metal instruments must be removed after 10 minutes, rinsed, dried and kept in a clean, non-contaminated receptacle. Prolonged soaking will cause damage to metal instruments.

DISINFECTION OF HARD, NON-POROUS (INANIMATE) (ENVIRONMENTAL) SURFACES IN FOOTBATHS: To remove body oils, dead tissues, soil and all other buildups or organic matter on (hard non-porous (inanimate) (environmental)) footbath surfaces after using the unit, drain the

water and thoroughly clean all (hard non-porous (inanimate) (environmental)) surfaces with soap or detergent, then rinse with water. [(Saturate with) (Use) (Apply)] a use solution of ½ ounce (of (this product) (PRODUCT NAME)) per (one) (1) gallon of water (or equivalent use dilution) (1191ppm active) to hard non-porous (inanimate) (environmental) surfaces with a brush, cloth, mop, sponge, auto scrubber or mechanical spray device ((hand pump) coarse pump or trigger spray device). Brush or swab thoroughly and allow solution to stand for 10 minutes. For spray applications, spray 6 – 8 inches from surface. Do not breathe spray. After the unit has been thoroughly disinfected, rinse all [(cleaned) (treated)] surfaces with fresh water. Do not use equipment until treatment has been absorbed, set or dried. Change cloth, sponge or towels frequently to avoid redeposition of soil. [(A fresh solution should be prepared) when use solution becomes visibly [(diluted) (soiled) (dirty)].

DISINFECTION / FUNGICIDE OF HARD, NON-POROUS (INANIMATE) (ENVIRONMENTAL) SURFACES IN FOOTBATHS: To remove body oils, dead tissues, soil and all other buildups or organic matter on (hard non-porous (inanimate) (environmental)) footbath surfaces after using the unit, drain the water and thoroughly clean all (hard non-porous (inanimate) (environmental)) surfaces with soap or detergent, then rinse with water. [(Saturate with) (Use) (Apply)] a use solution of ½ ounce (of (this product) (PRODUCT NAME)) per (one) (1) gallon of water (or equivalent use dilution) (1191ppm active) to hard non-porous (inanimate) (environmental) surfaces with a brush, cloth, mop, sponge, auto scrubber or mechanical spray device ((hand pump) coarse pump or trigger spray device). Brush or swab thoroughly and allow solution to stand for 10 minutes. For spray applications, spray 6 – 8 inches from surface. Do not breathe spray. After the unit has been thoroughly disinfected, rinse all [(cleaned) (treated)] surfaces with fresh water. Do not use equipment until treatment has been absorbed, set or dried. Change cloth, sponge or towels frequently to avoid redeposition of soil. [(A fresh solution should be prepared) when use solution becomes visibly [(diluted) (soiled) (dirty)].

Note: Plastics instruments can remain immersed until ready to use. Stainless Steel shears and other metal instruments must be removed after 10 minutes, rinsed, dried and kept in a clean, non-contaminated receptacle. Prolonged soaking will cause damage to metal instruments.

RESTROOM / BATHROOM

NON-ACID TOILET BOWL (AND URINAL) (AND BATHROOM) DISINFECTION / CLEANER DIRECTIONS

CONCENTRATE INSTRUCTIONS

FROM CONCENTRATE: Remove gross filth prior to disinfection. Add ½ ounce (of (this product) (PRODUCT NAME)) (1191ppm active) (or equivalent use dilution) directly into the toilet bowl and mix. Brush thoroughly over exposed surfaces and under the rim with a brush, cloth, mop, sponge, auto scrubber or mechanical spray device ((hand pump) coarse pump or trigger spray device). Repeat and allow to stand for 10 minutes and flush. Change cloth, sponge or towels frequently to avoid redeposition of soil.

(Or use alternate Concentrate Use directions)

FOR USE AS A NON-ACID BOWL CLEANER/DISINFECTANT IN TOILET BOWLS FROM CONCENTRATE:

1. Pre-clean heavily soiled areas.
2. Add ½ ounce (of (this product) (PRODUCT NAME)) directly into the toilet bowl for a 1:256 dilution.
3. Swab entire surface area especially under the rim.
4. Repeat and allow entire surface to remain wet for ten (10) minutes.
5. Flush toilet and rinse swab applicator thoroughly.

(Or use alternate Concentrate Use directions)

TO CLEAN AND DISINFECT TOILET BOWLS: A preliminary cleaning is required for the removal of heavy soil prior to disinfection. Fill toilet bowl with clean water. Saturate mop with ½ ounce (of (this product) (PRODUCT NAME)) while holding bottle and mop applicator over bowl. Swab bowl completely making sure to get under the rim. Let solution stand for 10 minutes then flush. Rinse applicator completely.

(Or use alternate Concentrate Use directions)

TO DISINFECT TOILET BOWLS: A preliminary cleaning is required for the removal of heavy soil prior to disinfection. Fill toilet bowl with clean water. [(Apply) (Squeeze)] ½ ounce of [(bowl cleaner)

(this product) (PRODUCT NAME)] onto bowl brush. Clean the entire unit especially under the rim at water outlets. Allow surface to remain wet for 10 minutes. Flush and rinse out bowl brush with clean water.

(Or use alternate Concentrate Use directions)

TO DISINFECT TOILET BOWLS: Flush to remove heavy soil. To clean, simply squirt ½ ounce (of (this product) (PRODUCT NAME)) under the rim and around sides. Allow it to stand for several minutes then scrub entire surface (especially under the rim) with a [(bowl) (toilet)] mop. Flush and rinse. To disinfect, squirt ½ ounce (of (this product) (PRODUCT NAME)) under the rim and around the sides. Scrub bowl with mop. Allow solution to remain in the bowl for 10 minutes after scrubbing. Flush and rinse.

(Or use alternate Concentrate Use directions)

TO DISINFECT TOILET BOWLS:

1. Remove gross filth and heavy soil deposits.
2. Fill toilet bowl with clean water.
3. Apply ½ ounce (of (this product) (PRODUCT NAME)) to swab applicator, brush, cloth, mop, sponge, auto scrubber or directly to surface with mechanical spray device ((hand pump) coarse pump or trigger spray device). For spray applications, spray 6 – 8 inches from surface. Do not breathe spray.
4. Swab entire surface area, especially under the rim.
5. Allow entire surface to remain wet for ten (10) minutes.
6. Flush toilet and rinse swab applicator thoroughly. Change cloth, sponge or towels frequently to avoid redeposition of soil.

FOR HEAVY DUTY CLEANING: Pre-clean heavily soiled areas. Empty toilet bowl or urinal and apply 1 ounce (of (this product) (PRODUCT NAME)) per (one) (1) gallon of water use solution to exposed surfaces including under the rim with a brush, cloth, mop, sponge, auto scrubber or directly to surface with mechanical spray device ((hand pump) coarse pump or trigger spray device). Allow solution to soak to aid in soil removal. For spray applications, spray 6 – 8 inches from surface. Do not breathe spray. Brush or swab thoroughly and allow solution to stand for 10 minutes and flush. Change cloth, sponge or towels frequently to avoid redeposition of soil. [(A fresh solution should be prepared) when use solution becomes visibly [(diluted) (soiled) (dirty)]].

USE SOLUTION INSTRUCTIONS

PREPARATION OF USE SOLUTION: Mix ½ ounce (of (this product) (PRODUCT NAME)) per (one) (1) gallon of water (OR) Mix [(one) (1) (a)] 1-ounce packet with 2 gallons of water (or equivalent use dilution) (1191ppm active).

FROM USE SOLUTION: Pre-clean surface. Empty water out of toilet bowl or urinal and apply ½ to 1 ounce use solution to exposed surfaces, including under the rim with a brush, cloth, mop, sponge, auto scrubber or foam gun (device) or mechanical spray device ((hand pump) coarse pump or trigger spray device). For spray applications, spray 6 – 8 inches from surface. Do not breathe spray. Allow solution to stand for 10 minutes and flush. Swab all areas after spraying. Refill toilet bowl or urinal with water. Change cloth, sponge or towels frequently to avoid redeposition of soil. [(A fresh solution should be prepared) when use solution becomes visibly [(diluted) (soiled) (dirty)]].

(Or use alternate Concentrate Use directions)

FOR USE AS A NON-ACID BOWL CLEANER/ DISINFECTANT IN TOILET BOWLS (AND URINALS) FROM USE SOLUTION:

1. Pre-clean heavily soiled areas.
2. Empty toilet bowls by forcing water through the trap.
3. Apply ½ to 1 ounce of use solution to expose surfaces in toilet bowls and urinals.
4. Swab entire surface area especially under the rim.
5. Allow entire surface to remain wet for ten (10) minutes.
6. Flush toilet and rinse swab applicator thoroughly.
7. Refill toilet bowl or urinal with water
8. [(A fresh solution should be prepared) when use solution becomes visibly [(diluted) (soiled) (dirty)]].

(Or use alternate Concentrate Use directions)

TOILET BOWLS/ URINALS: Swab bowl with brush to remove heavy soil prior to cleaning or disinfecting. Clean by applying use solution around the bowl and up under the rim. Stubborn stains may require brushing. To disinfect, first pre-clean to remove heavy soil, then remove or expel the residual bowl water over the inner trap. Pour in ½ to 1 ounce of the use dilution to thoroughly cover surfaces. Swab the bowl completely using a scrub brush or mop, making sure to get under rim. Let stand for 10 minutes or overnight, then flush. Refill toilet bowl or urinal with water. [(A fresh solution

should be prepared) when use solution becomes visibly [(diluted) (soiled) (dirty)].

(Or use alternate Concentrate Use directions)

TOILET BOWL (AND URINAL) DISINFECTION/ CLEANER DIRECTIONS: Remove gross filth prior to disinfection. Empty toilet bowl or urinal of water and apply ½ to 1 ounce of use solution directly to exposed surfaces including under the rim. Brush or swab thoroughly with a brush, cloth, mop, sponge, auto scrubber or mechanical spray device ((hand pump) coarse pump or trigger spray device) and allow solution to stand for 10 minutes and flush. For spray applications, spray 6 – 8 inches from surface. Allow toilet bowl to fill with water. [(A fresh solution should be prepared) when use solution becomes visibly [(diluted) (soiled) (dirty)].

(Or use alternate Concentrate Use directions)

TO CLEAN AND DISINFECT URINALS: Flush to remove heavy soil. Remove screens and strainers. Empty urinal of water. Then squirt ½ to 1 ounce of use solution around the edges and top. Allow solution to flow down over surfaces. Allow it to stand several minutes before scrubbing, then flush and rinse. To disinfect, allow solution to remain in urinal for at least 10 minutes after scrubbing. Refill toilet bowl or urinal with water. [(A fresh solution should be prepared when use solution becomes visibly [(diluted) (soiled) (dirty)].

(Or use alternate Concentrate Use directions)

TO DISINFECT URINALS:

1. Remove gross filth and heavy soil deposits.
2. Empty urinal or water.
3. Apply ½ to 1 ounce of use solution directly to urinal surfaces including water outlets area for general cleaning.
4. Then pour additional solution on applicator.
5. Clean entire unit, especially under rim at water outlets, with applicator.
6. Remove screen trap to deodorize drain and apply ½ ounce directly on edge and into drain.
7. Wait for 10 minutes, flush and rinse applicator.
8. Refill urinal with water.
9. [(A fresh solution should be prepared) when use solution becomes visibly [(diluted) (soiled) (dirty)].

(Or use alternate Concentrate Use directions)

DISINFECTION AND CLEANING TOILET BOWLS AND URINALS:

1. Preliminary cleaning is required for heavily soiled surfaces.
2. With a swab mop applicator, remove water from bowl by forcing out trap.
3. Press swab mop against side of bowl to remove excess water from applicator.
4. Apply ½ to 1 ounce of use solution evenly onto surface to be cleaned and disinfected.
5. Swab entire surface area especially under the rim where outlets are located.
6. Allow surface to remain wet on surfaces at least 10 minutes.
7. Flush toilet and rinse applicator thoroughly.
8. Refill bowl with water.
9. [(A fresh solution should be prepared) when use solution becomes visibly [(diluted) (soiled) (dirty)].

DEEP CLEANING/ DISINFECTING WATERFREE (WATERLESS) URINALS: Preliminary cleaning is required for heavily soiled surfaces. Remove and properly dispose of cartridge according to manufacturer's directions. Deep clean or disinfect the entire urinal by applying ½ to 1 ounce of use solution directly onto surface. [(Brush) (Scrub)] surfaces and let solution stand for 10 minutes. Dry surface with a soft cloth. Do not pour excess or soiled water down waterless urinal trap. [(A fresh solution should be prepared) when use solution becomes visibly [(diluted) (soiled) (dirty)].

GENERAL CLEANING TOILET BOWL: (Apply) (Open cap) (Squeeze gently, directing) ½ to 1 ounce of bowl cleaner under the rim and on sides of bowl (inside only). Brush, clean and flush toilet. (Close cap). Rinse brush with clean water. Do not use on any other surfaces including toilet seat, toilet lid, countertops, tubs and sinks. To clean other acid resistant toilet bowls or urinals, dilute product with 3 parts of water. Do not allow solution to remain on surfaces without immediately rinsing thoroughly with water.

TO CLEAN WATERFREE (WATERLESS) URINALS: Remove any debris from the bowl. Spray ½ to 1 ounce of use solution onto urinal surface. DO NOT spray product directly onto cartridge. Wipe surface to clean. Change cartridge as needed.

FOR HEAVY DUTY CLEANING: Pre-clean heavily soiled areas. Empty toilet bowl or urinal of water and apply 2 – 4 ounces of use solution to exposed surfaces including under the rim with a rush, cloth, mop, sponge, auto scrubber or foam gun (device) or mechanical spray device ((hand pump) coarse pump or trigger spray device). For spray applications, spray 6 – 8 inches from surface. Allow solution to soak to aid in soil removal. Brush or swab thoroughly and allow solution to stand for 10 minutes and flush. Refill toilet bowl or urinal with water. Change cloth, sponge or towels frequently to avoid redeposition of soil. [(A fresh solution should be prepared) when use solution becomes visibly [(diluted) (soiled) (dirty)].

OTHER INSTRUCTIONS

TO DISINFECT TUBS, SHOWER STALLS, SINKS, FAUCETS: Swab area and remove gross filth and heavy soil. Apply a solution ½ ounce (of (this product) (PRODUCT NAME)) per (one) (1) gallon of water (1191ppm active) (or equivalent use dilution) directly onto surface to be cleaned or apply with brush, cloth, sponge, auto scrubber or foam gun (device) or mechanical spray device ((hand pump) coarse pump or trigger spray device) to wet all surfaces thoroughly. Wipe surfaces. Allow surface to remain wet for at least 10 minutes. For spray applications, spray 6 – 8 inches from surface. Do not allow solution to dry on surface. Rinse thoroughly with water. Change cloth, sponge or towels frequently to avoid redeposition of soil. [(A fresh solution should be prepared) when use solution becomes visibly [(diluted) (soiled) (dirty)].

FOR USE TO CLEAN AND DISINFECT SHOWER ROOMS, LOCKER ROOMS AND OTHER LARGE, OPEN AREAS WITH FLOOR DRAINS:

1. Pre-clean heavily soiled areas.
2. Apply use solution of ½ ounce (of (this product) (PRODUCT NAME)) per (one) (1) gallons of water (1191ppm active) to floors, walls and ceilings making sure not to over spray. To disinfect, all surfaces must remain wet for 10 minutes.

Special instructions for foam guns: Pour concentrate into foam gun bottle and attach bottle to spray nozzle and ensure gun is attached to hose. (*Note: See foam gun instructions for more information.* Make sure setting is set for a 1:256 dilution.) Once in place, squeeze the handle to disperse foam solution. To disinfect, all surfaces must remain wet for ten (10) minutes. (*Foam guns not for use in California.*)

3. Scrub using a deck brush or other coarse material as necessary.
4. Rinse surfaces thoroughly with water and let air dry.
5. [(A fresh solution should be prepared) when use solution becomes visibly [(diluted) (soiled) (dirty)].

FUNGICIDAL / MOLD & MILDEW

FUNGICIDAL PERFORMANCE: At ½ ounce (of (this product) (PRODUCT NAME)) per (one) (1) gallon or water use level (1191ppm active) (1:256) (or equivalent use dilution). [(This product) (PRODUCT NAME) was evaluated in the presence of 10% serum and up to 500ppm hard water with a 10-minute contact time and found to be effective against the following fungi on hard, non-porous (inanimate) (environmental) surfaces:

Trichophyton interdigitale (ATCC 9533)

TO KILL FUNGI: Pre-clean heavily soiled areas. Apply use solution to hard, non-porous environmental surfaces. Allow surface to remain wet for ten (10) minutes. [(Rinse) (Wipe up excess liquid (with a paper towel)) (Allow to air dry)]. Use as directed at a 1:256 dilution (½ ounce per gallon of water) (or equivalent use dilution). (** Rinse all treated surfaces that come in contact with food such as countertops, appliances, tables and stovetops with potable water before reuse.)

(or use alternate Fungicidal directions)

FUNGICIDAL DIRECTIONS: For use in areas such as locker rooms, dressing rooms, shower and bath areas and exercise facilities. Use as directed at a 1:256 dilution (½ ounce per gallon of water) (or equivalent use dilution). Allow surface to remain wet for ten (10) minutes. [(Wipe up excess liquid (with a paper towel)) (Allow to air dry)].

(or use alternate Fungicidal directions)

FUNGICIDAL ACTIVITY: At ½ ounce (of (this product) (PRODUCT NAME)) per (one) (1) gallon of water use level (or equivalent use dilution) (1191ppm active). [(this product) (PRODUCT NAME)] is effective against *Trichophyton interdigitale* (athlete's food fungus) (a cause of Ringworm) (a cause

of Ringworm of the foot) on hard non-porous (inanimate) (environmental) surfaces in locker rooms, dressing rooms, shower and bath areas, and exercise facilities. Apply by cloth, sponge, mop, brush, auto scrubber or foam gun (device) or mechanical spray device ((hand pump) coarse pump or trigger spray device). For spray applications, spray 6 – 8 inches from surface. Do not breathe spray. Saturate surfaces with use solution. Treated surfaces must remain wet for 10 minutes. Allow solution to air dry and repeat treatment every seven days or when new growth appears. Change cloth, sponge or towels frequently to avoid redeposition of soil. [(A fresh solution should be prepared) when use solution becomes visibly [(diluted) (soiled) (dirty)]].

MOLD AND MILDEW CONTROL: To control the growth of mold and mildew and their odors on hard, non-porous (inanimate) (environmental surfaces), apply use solution of 1:256 dilution (½ ounce (of (this product) (PRODUCT NAME)) per (one) (1) gallon of water) (or equivalent use dilution) (1191ppm active). Apply by cloth, sponge, mop, brush, auto scrubber or foam gun (device) or mechanical spray device ((hand pump) coarse pump or trigger spray device) to thoroughly wet all treated surfaces completely. Allow surface to remain wet for ten (10) minutes. Allow solution to dry on surface and repeat treatment every seven days or when new growth appears. Change cloth, sponge or towels frequently to avoid redeposition of soil. [(A fresh solution should be prepared) when use solution becomes visibly [(diluted) (soiled) (dirty)]] (** Rinse all treated surfaces that come in contact with food such as countertops, appliances, tables and stovetops with potable water before reuse.)

TO CONTROL THE GROWTH OF MOLD AND MILDEW ON LARGE, INFLATABLE, NON-POROUS PLASTIC AND RUBBER STRUCTURES: For use on non-porous (inanimate) (environmental) surfaces such as animals, promotional items, moonwalks, slides, obstacle course play and exercise equipment. Thoroughly clean all surfaces with soap or detergent and rinse with water. Saturate surfaces with a use solution of a ½ ounce (of (this product) (PRODUCT NAME)) per (one) (1) gallon of water (1191ppm active) (or equivalent use dilution) of water. Apply by cloth, sponge, mop, brush, auto scrubber or foam gun (device) or mechanical spray device ((hand pump) coarse pump or trigger spray device). For spray applications, spray 6 – 8 inches from surface. Do not breath spray. Allow surfaces to remain wet for a period of 10 minutes. Ventilate buildings and other closed spaces. Do not use equipment until treatment has been absorbed, set or dried. Change cloth, sponge or towels frequently to avoid redeposition of soil. [(A fresh solution should be prepared) when use solution becomes visibly [(diluted) (soiled) (dirty)]].

HUMIDIFIER BACTERIA/ ALGAE TREATMENT: Formulated for use in portable evaporative humidifiers. Thoroughly clean the hard non-porous (inanimate) (environmental) surfaces of the water tank and filters before each heating season, or sooner if necessary. For every gallon of water in the humidifier tank, add 1/5 ounce (of (this product) (PRODUCT NAME)) (476ppm or equivalent use dilution). When you refill the tank, add 1/5 ounce (of (this product) (PRODUCT NAME)) for every gallon of water added in the tank (476ppm or equivalent use dilution). [(Rinse) (Wipe up excess liquid (with a paper towel)) (Allow to air)].
Not for use in heat vaporizing or atomizing type vaporizer humidifiers.

DEODORIZATION/ CLEANING

MOLD REMEDIATION/ PREVENTION (Water/Smoke Restoration/ Sewer Backup/ River Flood Cleanup/ Clean Water Source): For use by Mold Remediation Workers, Mold Remediation Contractors, Certified Mold Remediators, Certified Mold Contractors, Certified Mold Remediation Contractors, Applied Microbial Remediation Technicians, Certified Mold Professional, Certified Restorers, and Mold Remediation Companies.

CLEANING/DEODORIZING DIRECTIONS: Add ½ – 1 ounce (of (this product) (PRODUCT NAME)) per (one) (1) gallon of water (or equivalent dilution) to clean and deodorize windows, mirrors and non-food contact surfaces. Apply solution with a brush, mop, cloth, sponge, auto scrubber or foam gun (device) or mechanical spray device ((hand pump) coarse pump or rigger spray device) so as to wet all surfaces thoroughly. For sprayer applications, spray 6 – 8 inches from surface. Rub with sponge or cloth. [(Rinse) (Excess material must be wiped up or allowed to air dry) (Wipe up excess liquid (with a paper towel)) (Allow to air dry)]. Do not breathe spray. Change cloth, sponge or towels frequently to avoid redeposition of soil.

GENERAL DEODORIZATION: To deodorize, add ½ ounce (or (this product) (PRODUCT NAME))

to 1 gallon of water. [(Rinse) (Excess liquid material must be wiped up) (Wipe up excess liquid (with a paper towel)) (Allow to air dry)].

FOR USE AS A (GENERAL) CLEANER AND/ OR DEODORIZER: Apply use solution (½ ounce per gallon of water) to surfaces. [(Rinse) (Wipe up excess liquid (with a paper towel)) (Allow to air dry)]. For heavy-duty use, add 1 ounce per gallon of water (1:128) to clean hard, non-porous (inanimate) (environmental) surfaces.

FOR DEODORIZING GARBAGE CANS, GARBAGE TRUCKS, INDUSTRIAL WASTE RECEPTACLES AND GARBAGE HANDLING EQUIPMENT: It is especially important to pre-clean for the product to perform properly. Then, apply a wetting concentration of 1½ ounce (of (this product) (PRODUCT NAME)) per (one) (1) gallon of water (or equivalent use dilution) (3574ppm active).

FOR DEODORIZING SEPTIC STORAGE TANKS: When tanks are empty, pour ¼ ounce (of (this product) (PRODUCT NAME)) per (one) (1) gallon of water (596ppm active) (or equivalent use dilution) into septic storage tank on recreation vehicles, campers and boats to control odors. As tank fills with sewage and the vehicle is moving, this solution will mix and provide an adequate deodorizing solution for this use. [(This product) (PRODUCT NAME)] is to be used on gray and black water tanks only. Check with local state, or federal authorities before disposing of sewage in accordance to federal, state and local regulations for waste disposal.

RV HOLDING TANKS/RECREATIONAL VEHICLES: For toilet waste and holding tanks, cover bottoms of holding tank with water and add ½ – 1 ounce (of (this product) (PRODUCT NAME)) per gallon of water (or equivalent use dilution) to the tank. For kitchen waste, add ½ – 1 ounce (of (this product) (PRODUCT NAME)) per gallon of water (or equivalent use dilution) to gray water tank as needed to control malodors created by dirty dishwasher.

AUTOMOTIVE USES: A solution of ½ ounce (of (this product) (PRODUCT NAME)) per (one) (1) gallon of water (or equivalent use dilution) (1191ppm active) will effectively neutralize damp musty odors. Spray or apply onto seats, carpets, headliner and ashtray or into trunk and all vents to eliminate odors from tobacco, beverage spills and musty carpet. For sprayer applications, use a coarse spray device. [(Wipe up excess liquid (with a paper towel)) (Allow to air dry)].

AIR FRESHENER: A solution of ½ ounce (of (this product) (PRODUCT NAME)) per (one) (1) gallon of water (or equivalent use dilution) (1191ppm active) will effectively neutralize damp musty odors caused by mildew in storage areas, basements, closets, bathrooms, and A/C filters. Spray to eliminate odors from tobacco, food, beverage spills, and musty carpet. For sprayer applications, use a coarse spray device. Allow surfaces to air dry.

FOR ODORS CAUSED BY DOGS, CATS AND OTHER DOMESTIC ANIMALS: Use on rugs, floors, walls, tile, cages, cates, mats, liter boxes, floor coverings, or any surfaces soiled by a pet. Test a small inconspicuous area first. Blot problem area. Then following directions for **GENERAL DEODORIZARION**.

WATERBED CONDITIONER: When used as a waterbed conditioner, [(this product) (PRODUCT NAME)] eliminates odor caused by bacteria. If the bed has not been treated properly, drain bed completely. Add 15 gallons of water and mix vigorously. Drain bed again. Add 4-1/8 fluid ounces (of (this product) (PRODUCT NAME)) in a free flow waterbed of 90- to 180-gallon capacity. Add 8½ fluid ounces (of (this product) (PRODUCT NAME)) in a waveless/ fiber waterbed mattress of 90- to 180-gallon capacity. Repeat application every 4 to 6 months.

GLASS CLEANING/DEODORIZING DIRECTIONS: Add ½ – 1 ounce (of (this product) (PRODUCT NAME)) per (one) (1) gallon of water (or equivalent use dilution) to clean and deodorize windows, mirrors, and non-food contact glass surfaces. Use a coarse spray device. For spray applications, spray 6 – 8 inches from surface. Rub with sponge or cloth. Do not breathe spray.

SEWER BACKUP & RIVER FLOODING:

To use as a deodorizer, dilute ½ – 1 ounce (of (this product) (PRODUCT NAME)) per (one) (1) gallon of water allowing for the diluting along with non-salvageable materials. Saturate all affected

areas with a mechanical spray device (coarse pump or trigger spray device) before and after cleaning and extraction. For spray applications, spray 6 – 8 inches from surface. Rub with sponge or cloth. Use proper ventilation, open windows. **See MOLD REMEDIATION/ PREVENTION section.**

CARPETS, CARPET CUSHIONS, UPHOLSTERY, DRAPES AND OTHER POROUS MATERIALS, SUB FLOORS, DRYWALL, TRIM AND FRAME LUMBER, TACKLES STRIP AND PANELING:

To use as a deodorizer against water damage, extract excess water. Test hidden area for colorfastness. Dilute ½ – 1 ounce of the product per (one) (1) gallon of water, allowing for the diluting effect of absorbed water within saturated materials remove gross filth or heavy soil. Apply directly with a mechanical spray device (coarse pump or trigger spray device) to fully saturate affected materials. For spray applications, spray 6 – 8 inches from surface. Roll, brush or agitate into materials and allow the materials to remain damp for 10 minutes. Follow with a thorough extraction. Dry rapidly and thoroughly. **See MOLD REMEDIATION/ PREVENTION section.**

SMOKE DAMAGE RESTORATION: Effective against odor caused by smoke damage for home, institutional, and industrial use. [(This product) (PRODUCT NAME)] is particularly suitable for use in smoke damage restoration situations. Saturate affected materials with enough product to remain wet for at least 10 minutes Use proper ventilation.

WATER/ SMOKE DAMAGE RESTORATION: Effective against odor caused by smoke and water damage for home, institutional and industrial use. [(This product) (PRODUCT NAME)] is particularly suitable for use in water damage restoration situations. Saturate affected materials with enough product to remain wet for at least 10 minutes Use proper ventilation. **See MOLD REMEDIATION/ PREVENTION section.**

SPECIAL INSTURCTIONS FOR CLEANING CARPET: [(This product) (PRODUCT NAME)] can be used in industrial and institutional, commercial and residential areas fibers. Do not use on wool. Vacuum carpet thoroughly prior to cleaning. Test fabric for color fastness before use.

For Portable Extraction Units: Mix a ½ ounce (of (this product) (PRODUCT NAME)) per (one) (1) gallon of water (or equivalent use dilution).

For Truck Mounted Extraction Machines: Mix a ½ ounce (of (this product) (PRODUCT NAME)) per (one) (1) gallon of water (or equivalent use dilution) and meter at 2 gallons per hour.

For Rotary Floor Machines: Mix a ½ ounce (of (this product) (PRODUCT NAME)) per (one) (1) gallon of water (or equivalent use dilution) and apply at the rate of 300-500 sq. ft. per (one) (1) gallon.

Do not mix (this product) (PRODUCT NAME) with other cleaning products. Follow the cleaning procedures specified by the manufacturer of the cleaning equipment. After using (this product) (PRODUCT NAME), set the carpet pile and protect the carpet from furniture legs and bases while drying. Do not over wet. If applied to stain resistant nylon carpet, apply a fabric protector according to the carpet manufacturer's directions.

CARPET CLEANING/ DEODORIZATION FOR HOME, INSTITUTIONAL, AND INDUSTRIAL USE

[(This product) (PRODUCT NAME)] cleans and deodorizes the carpet. It can be used in industrial, institutional, commercial and residential areas such as homes, motels, and hotels chains.

Vacuum carpet thoroughly prior to application. Mix ½ ounce of product per (one) (1) gallon of water (or equivalent use dilution). Follow the Injection and/or Extraction procedures as specified for any conventional steam cleaning equipment you are using. For rotary floor machines, mix ½ ounce (of (this product) (PRODUCT NAME)) per (one) (1) gallon of water and spray on carpet at a rate of 300 – 500 sq. ft. per (one) (1) gallon.

[(For use) (Use (this product) (PRODUCT NAME))] on washable synthetic fibers. Do not use on wool. Test color fastness or carpet before use. Apply diluted product to a small concealed spot, then rub with a clean white cloth. If color changes or transfers to cloth, a water-based product must

not be used.

After using this product, set carpet pile in on direction with a stiff brush. Place aluminum foil under the legs of furniture while carpet is drying. Over-wetting can cause carpet to shrink. Manufacturer assumes no responsibility for over-wetting misuse.

Note: [(This product) (PRODUCT NAME)] must not be mixed with other cleaning products.

CLEANSING OF BODY SURFACES AND BODY ORIFICES OR HUMAN REMAINS: [(This product) (PRODUCT NAME)] removes secretions soil and blood along with their accompanying malodor from the surfaces and orifices of human remains. Using a sponge or washcloth, bathe the entire body with a use solution of ½ ounce (of (this product) (PRODUCT NAME)) per (one) (1) gallon of water (or equivalent use dilution). A soft brush may be employed on surfaces other than the face. Allow a 10-minute contact time for optimal results. [(Fresh solution should be prepared) when use solution becomes visibly [(dirty) (soiled) (diluted)]]].

FOR USE ON FINISHED FLOORS: To limit gloss reduction, use ½ ounce (of (this product) (PRODUCT NAME)) per (one) (1) gallon of water (or equivalent use dilution). Apply with a damp mop or auto scrubber. Allow surface to air dry.

OTHER USES

DISINFECTION OF HARD, NON-POROUS (INANIMATE) (ENVIRONMENTAL) SURFACES IN WHIRLPOOL UNITS: After using the whirlpool unit, drain and refill with fresh water to just cover the intake valve. Add ½ ounce (of (this product) (PRODUCT NAME)) per (one) (1) gallon of water (or equivalent use dilution) at this point. Briefly start the pump to circulate the solution. Turn off the pump. Wash down the unit sides, seat of the chair lift, and (any) (all) related equipment with a clean swab, brush or sponge. Treated surfaces must remain wet for 10 minutes. After the unit has been thoroughly disinfected, drain the solution from the unit and rinse any/all cleaned surfaces with fresh water. Repeat for heavy soiled units. [(A fresh solution should be prepared) when use solution becomes visibly [(diluted) (soiled) (dirty)]]].

ULTRASONIC BATH DISINFECTANT DIRECTIONS: Pre-clean heavily soiled objects. Use (this product) (PRODUCT NAME) to disinfect hard, non-porous (inanimate) (environmental) non-critical objects compatible with Ultrasonic cleaning units. Pour fresh solution at ½ ounce (of (this product) (PRODUCT NAME)) per (one) (1) gallon of water (1:256) (or equivalent use dilution) directly into bath chamber. Place objects into unit and operate for a minimum of 10 minutes (according to the manufacturers' use directions). [(Remove objects and [(wash) (rinse) with sterile water (for injection) (Allow to air dry)]]]. [(A fresh solution should be prepared) when use solution becomes visibly [(dilute) (soiled) (dirty)]]].

FOR DISINFECTING HARD, NON-POROUS (INANIMATE) (ENVIRONMENTAL) (SEALED) (FIBERGLASS) BATH AND THERAPY EQUIPMENT: To remove body oils, dead tissue, soil and all other buildups or organic matter on hard non-porous (inanimate) (environmental) surfaces after using the unit, drain the water and refill with fresh water to just cover the intake valve. Add 2½ ounce (of (this product) (PRODUCT NAME)) for each 5 gallons of water (½ ounce (of (this product) (PRODUCT NAME)) per one gallon) (1191ppm active) (or equivalent use dilution) in the unit at this point. Briefly start the pump to circulate the solution. Turn off the pump. Wash down the unit sides, seat of the chair lift, and (any) (all) related equipment with a clean swab, brush or sponge. [(Product to surface contact time must be at least) (Treated surfaces must remain wet for)] 10 minutes for proper disinfection. After the unit has been thoroughly disinfected, drain solutions from the unit and rinse any/all cleaned surfaces with fresh water. The unit is ready for reuse.

FOR DISINFECTING BAGLESS VACUUM CLEANERS: Add ½ ounce (of (this product) (PRODUCT NAME)) to (one) (1) gallon of water (1191ppm active) (or equivalent use dilution). Turn off and unplug vacuum cleaner. Remove the hard, non-porous container from vacuum cleaner that houses collected material. Empty contents into a waste receptacle. Rinse collection container with water and wipe clean to remove any additional collected material. Apply solution to collection container with a brush, cloth, sponge or mechanical spray device ((hand pump) coarse pump or trigger spray device) so as to wet all surfaces thoroughly. For sprayer applications, spray 6 – 8 inches from surface. Allow surfaces to remain wet for 10 minutes. [(Wipe up excess liquid (with a paper towel)) (Allow to air dry)]]]. Reattach container to vacuum cleaner. Change cloth, sponge or

towels frequently to avoid redeposition of soil. [(A fresh solution should be prepared) when use solution becomes visibly [(diluted) (soiled) (dirty)].

FOR DISINFECTING NON-POROUS VACUUM CLEANER BRUSHES: Add ½ ounce (of (this product) (PRODUCT NAME)) to (one) (1) gallon of water (1191ppm active) (or equivalent use dilution). Turn off and unplug vacuum cleaner. Remove the non-porous brushes from vacuum cleaner. Submerge brush in solution so as to wet all surfaces thoroughly. Allow surfaces to remain wet for 10 minutes. [(Wipe up excess liquid (with a paper towel)) (Allow to air dry)]. Reattach brushes to vacuum cleaner. [(A fresh solution should be prepared) when use solution becomes visibly [(diluted) (soiled) (dirty)].

COMMERCIAL FLORIST USE DIRECTIONS: For heavily soiled areas, a preliminary cleaning is required. To clean, disinfect and deodorize hard non-porous (inanimate) (environmental) surfaces in one step, prepare use solution by [(adding) (mixing)] ½ ounce (of (this product) (PRODUCT NAME)) per (one) (1) gallon of water (1:256) (or equivalent use dilution). For heavy-duty use, [(add) (mix)] ½ ounce (of (this product) (PRODUCT NAME)) per (one) (1) gallon of water (1:256) (or equivalent use dilution). Remove all leaves, petals, garbage and refuse. Pre-clean surfaces using pressurized water where possible. Apply use solution to hard (inanimate) (environmental) non-porous surfaces thoroughly wetting surfaces as required with a cloth, mop, brush, sponge, auto scrubber or foam gun (device) or mechanical spray device ((hand pump) coarse pump or trigger spray device). For sprayer applications, spray 6 – 8 inches from surfaces. Rub with brush, sponge, mop or cloth. DO not breathe spray. Treated surfaces must remain wet for 10 minutes. [(Wipe up excess liquid (with a paper towel)) (Allow to air dry)]. Change cloth, sponge or towels frequently to avoid redeposition of soil. [(A fresh solution should be prepared) when use solution becomes visibly [(dilute) (soiled) (dirty)].

WORK AREAS AND BENCHES: Spray or swab hard non-porous (inanimate) (environmental) working surfaces with a solution of 1:256 (of (this product) (PRODUCT NAME)) per (one) (1) gallon of water (or equivalent use dilution) (1191ppm active) before each work period and again after each plant is completed to help control transfer of disease such as *Botrytis*, crown rot, downy mildew, *Erwinia* and root rot. Allow surface to remain wet for 10 minutes. To apply solution as a sprayer application, use as a coarse spray only and spray 6 – 8 inches from surfaces. [(Wipe up excess liquid (with a paper towel)) (Allow to air dry)]. Change cloth, sponge or towels frequently to avoid redeposition of soil. [(A fresh solution should be prepared) when use solution becomes visibly [(dilute) (soiled) (dirty)].

POTS, FLATS AND FLOWER BUCKETS: Brush or wash used hard, non-porous pots and flats, then soak in a solution of ½ ounce (of (this product) (PRODUCT NAME)) per (one) (1) gallon of water (or equivalent use dilution) (1191ppm active) for 10 minutes to help control transfer of disease such as anthracnose, blight, *Botrytis*, crown rot, *Erwinia*, mildew, root rot and rust. [(Wipe up excess liquid (with a paper towel)) (Allow to air dry)]. [(A fresh solution should be prepared) when use solution becomes visibly [(dilute) (soiled) (dirty)].

CUTTING TOOLS: Soak cutting edge of tool for 10 minutes in a solution of ½ ounce (of (this product) (PRODUCT NAME)) per (one) (1) gallon of water (or equivalent use dilution) (1191ppm active) before use to help control transfer of diseases such as *Botrytis*, *Erwinia*, root and stem rots, and Tobacco Mosaic Virus (TMV). [(Wipe up excess liquid (with a paper towel)) (Allow to air dry)]. [(A fresh solution should be prepared) when use solution becomes visibly [(dilute) (soiled) (dirty)]. Dry and oil tools at the end of each workday.

BOOT/SHOE WASH: To prevent cross contamination into animal areas, shoe baths containing one inch of freshly made disinfecting solution should be placed at all entrances to building. Scrape waterproof shoes or boots and place in a 1/2 ounce SYNERGIZE per gallon water solution. Allow the solution to come in contact with the boot/shoe for 10 minutes. Change the disinfecting solution when solution becomes visibly dirty.

DIRECTIONS FOR HOUSEHOLD USE

KITCHEN/BATHROOM/HOUSEHOLD CLEANING: Apply ½ ounce (of (this product) (PRODUCT NAME)) per gallon of water (1191ppm active) (or equivalent use dilution) solution with a brush, cloth, sponge, mop, auto scrubber or foam gun (device) or mechanical spray device ((hand pump) coarse pump or trigger spray device) directly onto hard, non-porous (inanimate) (environmental)

surface. For spray applications, hold container 6 – 8 inches from surface and spray until thoroughly wet. [(Rinse) (Wipe the soiled area clean) (Wipe up excess liquid (with a paper towel)) (Allow to air dry)]. [(This product) (PRODUCT NAME)] is not to be used on dishware, glasses or eating utensils. For food contact surfaces, follow by a potable water rinse. Change cloth, sponge or towels frequently to avoid redeposition of soil.

DISINFECT/DEODORIZE: To disinfect hard, non-porous (inanimate) (environmental) surfaces such as floors, walls, counter, sinks, tubs, toilets, glazed tile, exterior surfaces of appliances, refrigerators or freezers, microwave exteriors, stove tops, and hoods, tables, garbage pails and faucets, apply ½ ounce (of (this product) (PRODUCT NAME)) per (one) (1) gallon of water (1191ppm active) (or equivalent use dilution) with brush, cloth, sponge, mop, auto scrubber or foam gun (device) or mechanical spray device ((hand pump), coarse pump or trigger spray device). For spray applications, hold container 6 inches to 8 inches from surface and spray until thoroughly wet. Treated surface must remain wet for 10 minutes before wiping. For heavily soiled area, a pre-cleaning step is required. The pre-cleaning step must be done according to the instructions under **Kitchen/ Bathroom/ Household Cleaning** directions. [(Rinse with potable water after use on surfaces that come in contact with food) (Wipe up excess liquid (with a paper towel) (allow to air dry))]. Change cloth, sponge or towels frequently to avoid redeposition of soil. [(A fresh solution should be prepared) when use solution becomes visibly [(diluted) (soiled) (dirty))].

DIRECTIONS FOR ALTERNATE CONTAINERS

AUTOMATED DILUTION SYSTEM (DILUTION SYSTEMS TRADE NAME) INSTRUCTIONS:

Remove [(cap) (spray nozzle)] from empty container. Fill empty container with a newly prepared use solution. Replace [(cap) (spray nozzle)]. Place correct use dilution label on newly filled container.

BAG-IN BOX CONTAINERS:

How to use this package: This package is designed to be used with dilution control systems only. Open package and connect to dispense according to directions on the box.

TRIGGER SPRAYERS: Fill bottle from dispenser. Apply to surfaces according to directions above.

MOP BUCKETS: Fill bucket from dispenser. Set up “Wet Floor” signs. Mop floor surfaces as specified in directions above.

PACKETS (For pre-measured tear open packets):

[(Simply) (Tear)] open and pour contents of packet [(1 ounce per 2 gallons) (½ ounce per 1 gallon)] of water. Keep packets in box until ready to use. *(Note: Amount of water to be determined by dilution packet rate.)*

REFILLS:

To Refill Concentrate from Large Containers Into Smaller Containers: [(This product) (PRODUCT NAME)] may be used to fill and refill clean, properly labeled containers for dilution elsewhere within your facility. Make sure the small container has been cleaned, dried and properly labeled according to state and local regulations. Also make sure other items (funnels or hand pumps) are properly cleaned and dried. To refill, simply pour (or pump product) from the larger container directly into the smaller one being careful not to spill any product. Keep both containers sealed when not in use.

(Note to reviewer: The title and first statement of this section must appear on every label, followed by the appropriate Storage and Disposal section. Brackets [] indicate that one option within the brackets MUST be used in the final label text. Each option within the brackets is enclosed in a set of parenthesis (). All “Notes” are only for reviewers and will not be included on label.)

STORAGE AND DISPOSAL

Do not contaminate water, food, or feed by storage and disposal.

(FOR USE ON NON-REFILLABLE CONTAINERS WITH HOUSEHOLD/RESIDENTIAL USES)

PESTICIDE DISPOSAL/CONTAINER HANDLING/CONTAINER DISPOSAL: Non-refillable container. Store only in original, child-resistant packaging in areas inaccessible to children. Triple rinse container. Do not reuse empty container. Wrap (container) and put in trash or offer for recycling if available.

(FOR USE ON NON-REFILLABLE CONTAINERS WITH INSTITUTIONAL/ COMMERCIAL/ INDUSTRIAL)

(Note: To be used with either Non-public health or Public health uses in this section.)

(Note: For use on containers greater than one gallon)

PESTICIDE STORAGE: Open dumping is prohibited. Store only in original, child-resistant packaging. DO not reuse empty container. If a leaky container must be contained within another, mark the outer container to identify the contents. Store pesticides away from food, pet food, feed, seed, fertilizers, and veterinary supplies. Keep [(this product) (PRODUCT NAME)] under locked storage sufficient to make it inaccessible to children or persons unfamiliar with its proper use.

(Note: For use on containers greater than one gallon)

PESTICIDE STORAGE: Pesticide wastes are acutely hazardous. Improper disposal of excess pesticide, spray mixture or rinsate is a violation of Federal Law. If these wastes cannot be disposed of by use according to label instructions, contact your State Pesticide or Environmental Control Agency, or the Hazardous Waste Representative at the nearest EPA Regional Office for guidance.

CONTAINER DISPOSAL:

(Note: Only one of the following Container Disposal paragraphs will be used, depending on packaging type.)

Non-refillable container. Do not reuse this container to hold materials other than pesticides or diluted pesticides (rinsate). Offer for recycling if available or puncture and dispose in a sanitary landfill, or by other procedures approved by state and local authorities. If rinsate cannot be used, follow Pesticide Disposal instructions.

*(Note: Several of our customers' packaging options are sealed containers or bottles designed to reduce worker exposure to the concentrate. None of these can be triple rinsed because they are closed sealed containers. The following text will be used on these **non-refillable sealed container** types only.)*

Non-refillable container. Do not reuse or refill this container. Wrap empty container and put in trash.

*(Note: The following text will be used on non-refillable **RTU container** labels only.)*

Non-refillable container. Do not reuse or refill this container. Wrap empty container and put in trash.

*(Note: The following text will be used on the **BAG in BOX container** types only. No Residue Removal instructions are used when BAG in BOX container disposal instructions is used.)*

BAG in BOX CONTAINER DISPOSAL: Completely empty bag into application equipment. Then offer for recycling if available or dispose of in a sanitary landfill, or by incinerations, or by other procedures allowed by state and local authorities.

(Note: For use on containers of one gallon or less. The following replaces the above "Pesticide Storage" "Pesticide Disposal" and "Container Disposal" directions in the INSTITUTIONAL/ COMMERCIAL/ INDUSTRIAL section.)

CONTAINER DISPOSAL/PESTICIDE STORAGE: Non-refillable container. Store only in original, child-resistant packaging. Do not reuse empty container. Store pesticides away from food, pet food, feed, seed, fertilizers, and veterinary supplies. Keep [(this product) (PRODUCT NAME)] under locked storage sufficient to make it inaccessible to children or persons unfamiliar with its proper use. Triple rinse as follows: Fill container 1/2 full with water and reclose the container. Agitate vigorously and dispose of rinsate. Repeat two more times. Wrap (container) and put in trash or offer for recycling if available.

(FOR USE ON REFILLABLE CONTAINERS)

(Note: The following text must be used on all refillable containers greater than five gallons.)

Cleaning the container before final disposal is the responsibility of the person disposing of the container. Cleaning BEFORE refilling is the responsibility of the refiller.

PESTICIDE STORAGE: Open dumping is prohibited. Store only in original, child-resistant packaging. If a leaky container must be contained within another, mark the outer container to identify the contents. Store pesticides away from food, pet food, feed, seed, fertilizers, and veterinary supplies. Keep [(this product) (PRODUCT NAME)] under locked storage sufficient to make it inaccessible to children or persons unfamiliar with its proper use.

PESTICIDE STORAGE: Pesticide wastes are acutely hazardous. Improper disposal of excess pesticide, spray mixture or rinsate is a violation of Federal Law. If these wastes canoe be disposed

of by use according to label instructions, contact your state Pesticide or environmental Control Agency, or the Hazardous Waste Representative at the nearest EPA Regional Office for guidance.

(Note to Reviewer: Only one of the following paragraphs will be used for Residue Removal/Container Disposal on all refillable and non-refillable INSTITUTIONAL/ COMMERCIAL/ INDUSTRIAL labels.)

(Note: For containers up to and including 5 gallons.)

RESIDUE REMOVAL INSTRUCTIONS: triple rinse container (or equivalent) promptly after emptying. Triple rinse as follows: Fill the container 1/2 full with water and recap. Shake for seconds. Follow Pesticide Disposal instructions for rinsate disposal. Drain for 10 seconds after the flow begins to drip. Repeat this procedure two more times.

(For containers greater than 5 gallons with Industrial/Commercial Non-public Health Uses)

RESIDUE REMOVAL INSTRUCTIONS: To clean the container before final disposal, empty the remaining contents from this container into application equipment or a mix tank. Empty remaining contents into application equipment or a mix tank. Fill the container 1/2 full with water. Replace and tighten closures. [(Tip container on its side and roll it back and forth, ensuring at least one complete revolution for 30 seconds) (Agitate vigorously or recirculate water for 30 seconds)]. Stand the container on its end and tip it back and forth several times. Empty the rinsate into application equipment or a mix tank or store rinsate for later use or disposal. Repeat this procedure two more times.

(For containers greater than 5 gallons with Industrial/Commercial Public Health Uses)

RESIDUAL REMOVAL INSTRUCTIONS: To clean the container before final disposal, triple rinse as follows: Fill container 1/2 full with water. [(Tip container on its side and roll it back and forth, ensuring at least one complete revolution for 30 seconds) (Agitate vigorously or recirculate water for 30 seconds)]. Stand the container on its end and tip it back and forth several times. Turn the container over its other end and tip it back and forth several times. Follow Pesticide Disposal instructions for rinsate disposal. Repeat this procedure two more times.

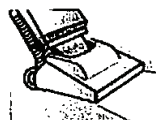
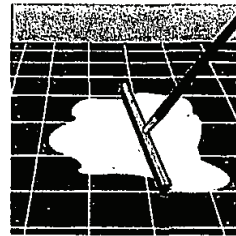
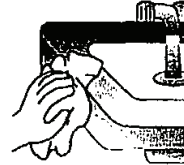
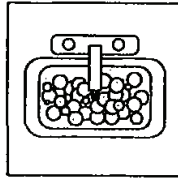
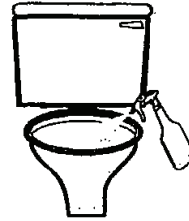
(For containers up to and including 5 gallons – Refillable containers only.)

CONTAINER HANDLING/RESIDUE REMOVAL: Refillable container. Refill this container with [(this brand) (this product) (PRODUCT NAME) (pesticide)] only. Do not reuse this container for any other purpose. Cleaning the container before final disposal is the responsibility of the person disposing of the container. Cleaning before refilling is the responsibility of the refiller. To clean the container before final disposal, empty the remaining contents from this container and store for later disposal. Fill container 1/2 full with water. Replace and tighten closures. Tip container on its side and roll it back and forth, ensuring at least one complete revolution, for 30 seconds. Stand the container on its end and tip it back and forth several times. Store rinsate for later disposal. Repeat this procedure two more times. Then offer for recycling if available or puncture and dispose of in a sanitary landfill or by incineration.

ALTERNATE BRAND NAMES:

<ul style="list-style-type: none">• Vetericyn Surface• Comrade• Comrade-D• EnviroZoo• EnviroPet• Animalia-D• Kingdom• Kingdom-D• Ataraxia• Ataraxia-D• InnovaZoo	<ul style="list-style-type: none">• Guardian• Guardian-D• Sidekick• SurfaceGuard• AgPro-D• BioSecure-D• BioSecure• DISIN-VET• XtraCIDE• XtraSAN
--	--

(Note to Reviewer: These icons have been requested by our customers and will appear on the label with the appropriate directions.)





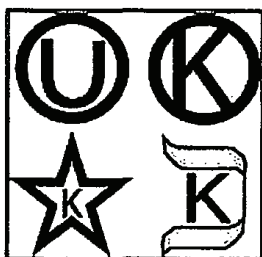
DISINFECTANT



DESINFECTANTE



KOSHER



1/2 OUNCE PACKET LABEL TO BE USED WITH MASTER CONTAINER LABEL

FOR DISINFECTION / FUNGICIDE / VIRUCIDE* USE

MIX EACH PACKET WITH 1 GALLON OF WATER

PRODUCT NAME

E.P.A. Reg. No. 92206-XX E.P.A. Est. No.

NET CONTENTS: ½ FLUID OZ.

ACTIVE INGREDIENT:

Alkyl (C ₁₄ , 50%; C ₁₂ , 40%; C ₁₆ , 10%)	
Dimethyl Benzyl Ammonium Chloride.....	12.24%
Octyl Decyl Dimethyl Ammonium Chloride.....	9.18%
Dioctyl Dimethyl Ammonium Chloride.....	4.590%
Didecyl Dimethyl Ammonium Chloride.....	4.590%

OTHER INGREDIENTS:	69.40%
TOTAL	100.00%

KEEP OUT OF REACH OF CHILDREN

DANGER/PELIGRO

FIRST AID

Have the product container or label with you when calling a poison control center or doctor, or going for treatment.

IF ON SKIN OR CLOTHING:

- Take off contaminated clothing.
- Rinse skin immediately with plenty of water for 15-20 minutes.
- Call a poison control center or doctor for treatment advice.

IF IN EYES:

- Hold eye open and rinse slowly and gently with water for 15-20 minutes.
- Remove contact lenses, if present, after the first 5 minutes, then continue rinsing eye.
- Call a poison control center or doctor for treatment advice

IF SWALLOWED:

- Call a poison control center or doctor immediately for treatment advice.
- Have person sip a glass of water if able to swallow.
- Do not induce vomiting unless told to do so by a Poison Control Center or doctor.
- Do not give anything by mouth to an unconscious person.

IF INHALED:

- Move person to fresh air.
- If person is not breathing, call 911 or an ambulance, then give artificial respiration, preferably mouth- to-mouth if possible.
- Call a Poison Control Center or doctor for treatment advice.

NOTE TO PHYSICIAN: Probable mucosal damage may contraindicate the use of gastric lavage.

SEE OUTER CONTAINER FOR PRECAUTIONARY STATEMENTS
AND USE DIRECTIONS.

DISPOSAL: Do not Reuse Container. Wrap and Put in Trash

SKV Scientific, Inc.

3546 North Riverside Avenue,
Rialto, CA 92377
909.822.6000
Toll Free:
1.888.592.7844

ONE OUNCE PACKET LABEL TO BE USED WITH MASTER CONTAINER LABEL

FOR DISINFECTION / FUNGICIDE / VIRUCIDE* USE

MIX EACH PACKET WITH 1 GALLON OF WATER

PRODUCT NAME

E.P.A. Reg. No. 92206-XX E.P.A. Est. No.

NET CONTENTS: ½ FLUID OZ.

ACTIVE INGREDIENT:

Alkyl (C ₁₄ , 50%; C ₁₂ , 40%; C ₁₆ , 10%)	
Dimethyl Benzyl Ammonium Chloride.....	12.24%
Octyl Decyl Dimethyl Ammonium Chloride.....	9.18%
Diocetyl Dimethyl Ammonium Chloride.....	4.590%
Didecyl Dimethyl Ammonium Chloride.....	4.590%

OTHER INGREDIENTS:69.40%

TOTAL 100.00%

KEEP OUT OF REACH OF CHILDREN

DANGER/PELIGRO

FIRST AID

Have the product container or label with you when calling a poison control center or doctor, or going for treatment.

IF ON SKIN OR CLOTHING:

- Take off contaminated clothing.
- Rinse skin immediately with plenty of water for 15-20 minutes.
- Call a poison control center or doctor for treatment advice.

IF IN EYES:

- Hold eye open and rinse slowly and gently with water for 15-20 minutes.
- Remove contact lenses, if present, after the first 5 minutes, then continue rinsing eye.
- Call a poison control center or doctor for treatment advice

IF SWALLOWED:

- Call a poison control center or doctor immediately for treatment advice.
- Have person sip a glass of water if able to swallow.
- Do not induce vomiting unless told to do so by a Poison Control Center or doctor.
- Do not give anything by mouth to an unconscious person.

IF INHALED:

- Move person to fresh air.
- If person is not breathing, call 911 or an ambulance, then give artificial respiration, preferably mouth- to-mouth if possible.
- Call a Poison Control Center or doctor for treatment advice.

NOTE TO PHYSICIAN: Probable mucosal damage may contraindicate the use of gastric lavage.

SEE OUTER CONTAINER FOR PRECAUTIONARY STATEMENTS
AND USE DIRECTIONS.

DISPOSAL: Do not Reuse Container. Wrap and Put in Trash

SKV Scientific, Inc.

3546 North Riverside Avenue,
Rialto, CA 92377
909.822.6000
Toll Free:
1.888.592.7844

SECONDARY CONTAINER LABEL

(Note to Reviewer: This secondary container label will be used only when the product is diluted in accordance with the use directions.)

PRODUCT NAME

E.P.A. Reg. No. 92206-XX E.P.A. Est. No.

The product in this container is diluted as directed on the pesticide product label.
This container is not for further resale or distribution.

ACTIVE INGREDIENT:

Alkyl (C₁₄, 50%; C₁₂, 40%; C₁₆, 10%)
Dimethyl Benzyl Ammonium Chloride.....12.24%
Octyl Decyl Dimethyl Ammonium Chloride.....9.18%
Dioctyl Dimethyl Ammonium Chloride.....4.590%
Didecyl Dimethyl Ammonium Chloride.....4.590%

OTHER INGREDIENTS:69.40%
TOTAL 100.00%

KEEP OUT OF REACH OF CHILDREN

DANGER/PELIGRO

PRECAUTIONARY STATEMENTS

Hazards to Humans and Domestic Animals

Causes irreversible eye damage and skin burns. Harmful if swallowed, if absorbed through the skin, or inhaled. Do not get in eyes, on skin or on clothing. Avoid breathing vapor or spray mist. Wear goggles, face shield or shielded safety glass, protective clothing, and chemical-resistant gloves. Wash thoroughly with soap and water after handling and before eating, drinking, using tobacco or using the toilet. Remove and wash contaminated clothing before reuse.

Follow the directions for use on the pesticide label when applying this product. See product label for Storage and Disposal instructions.

FIRST AID

Have the product container or label with you when calling a poison control center or doctor, or going for treatment.

IF ON SKIN OR CLOTHING:

- Take off contaminated clothing.
- Rinse skin immediately with plenty of water for 15-20 minutes.
- Call a poison control center or doctor for treatment advice.

IF IN EYES:

- Hold eye open and rinse slowly and gently with water for 15-20 minutes.
- Remove contact lenses, if present, after the first 5 minutes, then continue rinsing eye.
- Call a poison control center or doctor for treatment advice

IF SWALLOWED:

- Call a poison control center or doctor immediately for treatment advice.
- Have person sip a glass of water if able to swallow.
- Do not induce vomiting unless told to do so by a Poison Control Center or doctor.
- Do not give anything by mouth to an unconscious person.

IF INHALED:

- Move person to fresh air.
- If person is not breathing, call 911 or an ambulance, then give artificial respiration, preferably mouth-to-mouth if possible.
- Call a Poison Control Center or doctor for treatment advice.

NOTE TO PHYSICIAN: Probable mucosal damage may contraindicate the use of gastric lavage.

SKV Scientific, Inc.

3546 North Riverside Avenue,
Rialto, CA 92377
909.822.6000
Toll Free:
1.888.592.7844