



U.S. ENVIRONMENTAL PROTECTION AGENCY  
 Office of Pesticide Programs  
 Antimicrobials Division (7510P)  
 1200 Pennsylvania Ave., N.W.  
 Washington, D.C. 20460

EPA Reg. Number:

92206-4

Date of Issuance:

3/13/17

NOTICE OF PESTICIDE:

Registration  
 Reregistration  
 (under FIFRA, as amended)

Term of Issuance:

Conditional

Name of Pesticide Product:

DISIN-VET

Name and Address of Registrant (include ZIP Code):

Rebecca Lei  
 Regulatory and Quality Manager  
 SKV Scientific, INC.  
 3546 North Riverside Avenue  
 Rialto, CA 92377

**Note:** Changes in labeling differing in substance from that accepted in connection with this registration must be submitted to and accepted by the Antimicrobials Division prior to use of the label in commerce. In any correspondence on this product always refer to the above EPA registration number.

On the basis of information furnished by the registrant, the above named pesticide is hereby registered under the Federal Insecticide, Fungicide and Rodenticide Act.

Registration is in no way to be construed as an endorsement or recommendation of this product by the Agency. In order to protect health and the environment, the Administrator, on his motion, may at any time suspend or cancel the registration of a pesticide in accordance with the Act. The acceptance of any name in connection with the registration of a product under this Act is not to be construed as giving the registrant a right to exclusive use of the name or to its use if it has been covered by others.

This product is conditionally registered in accordance with FIFRA section 3(c)(7)(A). You must comply with the following conditions:

1. Submit and/or cite all data required for registration/reregistration/registration review of your product under FIFRA when the Agency requires all registrants of similar products to submit such data.

Signature of Approving Official:

*E. Miederhoff*  
 Eric Miederhoff, Product Manager 31  
 Regulatory Management Branch I  
 Antimicrobials Division (7510P)  
 Office of Pesticide Programs

Date:

3/13/17

2. You are required to comply with the data requirements described in the DCI Order identified below:
  - a. ADBAC GDCI-069105-30882
  - b. DDAC GDCI-069149-30869

You must comply with all of the data requirements within the established deadlines. If you have questions about the Generic DCI listed above, you may contact the Reevaluation Team Leader (Team 36): <http://www2.epa.gov/pesticide-contacts/contacts-office-pesticide-programs-antimicrobial-division>.

3. Make the following label changes before you release the product for shipment:
  - Revise the EPA Registration Number to read, “EPA Reg. No. 92206-4.”
4. Submit one copy of the final printed label for the record before you release the product for shipment.

Should you wish to add/retain a reference to the company’s website on your label, then please be aware that the website becomes labeling under the Federal Insecticide Fungicide and Rodenticide Act and is subject to review by the Agency. If the website is false or misleading, the product would be misbranded and unlawful to sell or distribute under FIFRA section 12(a)(1)(E). 40 CFR 156.10(a)(5) list examples of statements EPA may consider false or misleading. In addition, regardless of whether a website is referenced on your product’s label, claims made on the website may not substantially differ from those claims approved through the registration process. Therefore, should the Agency find or if it is brought to our attention that a website contains false or misleading statements or claims substantially differing from the EPA approved registration, the website will be referred to the EPA’s Office of Enforcement and Compliance.

If you fail to satisfy these data requirements, EPA will consider appropriate regulatory action including, among other things, cancellation under FIFRA section 6(e). Your release for shipment of the product constitutes acceptance of these conditions. A stamped copy of the label is enclosed for your records. Please also note that the record for this product currently contains the following CSFs:

- Basic CSF dated 03/9/2017

The alternate brand name “DISINVET” has been added to the product record.

If you have any questions, you may contact Joe Daniels at (703) 347-8669 or via email at [daniels.joseph@epa.gov](mailto:daniels.joseph@epa.gov).

Enclosure

**ACCEPTED**

03/13/2017

Under the Federal Insecticide, Fungicide  
and Rodenticide Act as amended, for the  
pesticide registered under  
EPA Reg. No. 92206-4

# DISIN-VET

{Alternate Brand Name: **DISINVET**}

## SKV Scientific, Inc.

3546 North Riverside Avenue, Rialto, CA 92377

Phone No: +1.888.592.7844

Reg. No. 92206-U Est. No.

Net Contents: Batch No:

## PRECAUTIONARY STATEMENTS

### HAZARDS TO HUMANS AND DOMESTIC ANIMALS

**DANGER. Keep Out of Reach of Children.** Corrosive. Causes irreversible eye damage and skin burns. Harmful if swallowed, if absorbed through the skin, or inhaled. Do not get in eyes, on skin or on clothing. Avoid breathing vapor or spray mist. Wear goggles, face shield or shielded safety glass, protective clothing, and chemical-resistant gloves. Wash thoroughly with soap and water after handling and before eating, drinking, using tobacco or using the toilet. Remove and wash contaminated clothing before reuse.

---

*(If container is 5 gallons or larger the following statement must appear on the label.)*

#### ENVIRONMENTAL HAZARD

This pesticide is toxic to fish. Do not discharge effluent containing [(This product) (Product Name)] into lakes, streams, ponds, estuaries, oceans or other waters unless in accordance with the requirements of a National Pollutant Discharge Elimination System (NPDES) permit and the permitting authority has been notified in writing prior to discharge. Do not discharge effluent containing [(This product) (Product Name)] into sewer systems without previously notifying the local sewage treatment plant authority. For guidance contact your State Water Board or Regional Office of the EPA.

*(If container is equal to or less than 5 gallons, use the following as an alternate to the above statement.)*

#### ENVIRONMENTAL HAZARD

[(This product) (Product Name)] is toxic to fish.

---

#### PHYSICAL OR CHEMICAL HAZARDS

Do not use or store near heat or open flame.

Do not mix with oxidizers, anionic soaps and detergents

---

#### FIRST AID

Have the product container or label with you when calling a poison control center or doctor, or going for treatment.

**IF ON SKIN OR CLOTHING:** Take off contaminated clothing. Rinse skin immediately with plenty of water for 15-20 minutes. Call a poison control center or doctor for treatment advice.

**IF IN EYES:** Hold eye open and rinse slowly and gently with water for 15-20 minutes. Remove contact lenses, if present, after the first 5 minutes, then continue rinsing eye. Call a poison control center or doctor for treatment advice

**IF SWALLOWED:** Call a poison control center or doctor immediately for treatment advice. Have person sip a glass of water if able to swallow. Do not induce vomiting unless told to do so by a poison control center or doctor. Do not give anything by mouth to an unconscious person.

**IF INHALED:** Move person to fresh air. If person is not breathing, call 911 or an ambulance,

then give artificial respiration, preferably mouth-to-mouth if possible. Call a poison control center or doctor for further treatment advice.

**NOTE TO PHYSICIAN:** Probable mucosal damage may contraindicate the use of gastric lavage.

**KEEP OUT OF REACH OF CHILDREN**  
**DANGER PELIGRO**  
 See top (left) (right) (back) (side) panel (of label) (below) for additional precautionary statements and first aid statements.

**PELIGRO: SI NO PUEDE LEER EN INGLES, PREGUNTE A SU SUPERVISOR SOBRE LAS INSTRUCCIONES DE USO APROPIADAS ANTES DE TRABAJAR CON ESTE PRODUCTO.**

*(Note to Reviewer: This information has been verified per DOT regulations. It is NOT required to be on the label but is being requested by a customer.)*

**TRANSPORTATION INFORMATION:**

**DOT Hazard Class:** 8 Corrosive

**DOT PROPER SHIPPING NAME:** Disinfectant Liquid Corrosive (Quaternary Ammonium Compound), 8 UN1903, PGII

**[(This product) (Product Name)] is:**

- Disinfectant – Cleaner – Mildewstat – Fungicide – Non-Food Contact Sanitizer – Virucide\* – (Deodorizer) (Odor Counteractant) (Odor Neutralizer) – For Home, Industrial, School, Dairy, Equine and Poultry/Turkey Farm, Veterinary, Restaurant, Food Handling and Process Areas, Federally Inspected Meat and Poultry Plants, Bar and Kitchen Use and for Harvesting & Handling Equipment.
- Effective in hard water up to 250 ppm hardness (Calculated as CaCO<sub>3</sub>) in the presence of 5% serum contamination.
- Formulated for effective (Poultry), Chicken, Turkey, Duck, Quail, Ostrich, Emu and other Avian hatchery sanitation.
- Formulated for effective Swine Premise sanitization.
- Formulated for effective Mushroom Farm Sanitation.
- (Product of USA) (Made in USA)

**ACTIVE INGREDIENT:**

Didecyl Dimethyl Ammonium Chloride 13.02%

Alkyl (C<sub>14</sub>, 50%; C<sub>12</sub>, 40%; C<sub>16</sub>, 10%) dimethyl benzyl ammonium chloride 8.68%

**OTHER INGREDIENTS:** 78.30%

**TOTAL:** 100.00%

*(Note to Reviewer: The table of Content will not be on any label. This is for our customer's reference only. The page numbers will change as the label changes.)*

**Table of Contents**

| <u>Description</u>            | <u>Page No.</u> | <u>Description</u>            | <u>Page No.</u> |
|-------------------------------|-----------------|-------------------------------|-----------------|
| Organism Guide                | <b>3</b>        | Barber/ Salon                 |                 |
| Marketing Claims              | <b>3</b>        | Disinfection                  | <b>26</b>       |
| Use Directions                |                 | Non-Food Contact Sanitization | <b>27</b>       |
| General                       | <b>10</b>       | Restroom/ Bathroom            | <b>27</b>       |
| Food Processing               |                 | Deodorization/ Mold & Mildew  | <b>31</b>       |
| Disinfection                  | <b>13</b>       | Other                         |                 |
| Non-Food Contact Sanitization | <b>13</b>       | Disinfection                  | <b>35</b>       |

|                               |           |                               |           |
|-------------------------------|-----------|-------------------------------|-----------|
| Animal Premises               |           | Non-Food Contact Sanitization | <b>37</b> |
| Disinfection                  | <b>18</b> |                               |           |
| Non-Food Contact Sanitization | <b>25</b> |                               |           |

## ORGANISM LIST

*(Note: For reference use only. THs is a list of all organisms covered by this label. Please see appropriate Directions for Use for proper use dilution.)*

*(Note to Reviewer: Brackets [ ] indicate that one option within the brackets must be used if that marketing statement is for use in the final label text. Each option within brackets is enclosed in a set of parenthesis ( ).)*

**GENERAL DISINFECTION PERFORMANCE IN NON-MEDICAL FACILITIES (Households, Schools, Restaurants, Food services, Beverages and Food Processing Plants and Other Non-Medical Facilities):** [(This product) (Product Name)] is bactericidal according to the AOAC Use Dilution Test method on hard (inanimate) (environmental) surfaces, modified in the presence of 5% organic serum against:

*Staphylococcus aureus* (ATSS 6538)  
*Salmonella enterica* (ATCC 10708)

**ANIMAL PREMISE VIRUCIDAL PERFORMANCE:** [(This product) (Product Name)] was evaluated in the presence of 5% serum and up to 250-ppm hard water and found to be effective against the following viruses on hard, non-porous (inanimate) (environmental) surfaces:

*Avian Influenza A Virus* (ATCC VR-2072)  
*Avian Adenovirus* (ATCC VR-280)  
*Avian Reovirus* (ATCC VR2449)  
*Infectious Bursal Disease Virus*  
*Infectious Bronchitis Virus Beaudette IB42*  
*Infectious Laryngotracheitis Virus LT-IVAX*  
*Newcastle Disease Virus* (ATCC VR-108)  
*Porcine Rotavirus*  
*Porcine Respiratory & Reproductive Syndrome Virus*  
*Pseudorabies Virus*  
*Swine Influenza A Virus*  
*Transmissible Gastroenteritis Virus*  
*Vesicular Stomatitis Virus*

**NON-FOOD CONTACT SANITIZING PERFORMANCE:** [(This product) (Product Name)] was evaluated in the presence of 5% serum and found to be effective against the following organisms on hard, non-porous environmental surfaces:

*Staphylococcus aureus* (ATSS 6538)  
*Enterobacter aerogenes* (ATCC 13048)

**FUNGICIDAL PERFORMANCE:** [(This product) (Product Name)] was evaluated in the presence of 5% serum and up to 250-ppm hard water found to be effective against the following fungi on hard, non-porous (inanimate) (environmental) environmental surfaces:

*Aspergillus niger* (ATCC 16404)  
*Aspergillus fumigates* (ATCC 36607)  
*Candida albicans* (ATCC 10231)  
*Trichophyton mentagrophytes* (ATCC 9533)

## MARKETING CLAIMS

*(Note to Reviewer: The following is considered as optional marketing language.)*

*(Note to Reviewer: Brackets [ ] indicate that one option within the brackets must be used if that marketing statement is for use in the final label text. Each option within brackets is enclosed in a set of parenthesis ( ).)*

[(This product) (Product Name) (DISIN-VET)] is for use on hard, non-porous (inanimate) (environmental) surfaces in:

1. Central supply, housekeeping & janitorial rooms.
2. EMS & fire facilities, fire stations, emergency vehicles, police cars.
3. Day care centers and nurseries, kindergartens, and preschools.
4. Restaurants, restaurants and bars, bars, kitchens, cafeterias taverns, kitchens, fast food operations and food storage areas.
5. Supermarkets, convenience stores, retail and wholesale establishments, department stores, shopping malls, gift shops, video stores, bookstores, dressing rooms and laundries, photocopy centers, bicycle shops, auto repair centers.
6. Computer manufacturing sites, toy factories.
7. Food establishments, coffee shops, donut shops, bagel stores, pizza stores, liquor stores.
8. Crime scenes and funeral homes morgues mortuaries, burial vaults, mausoleums, autopsy rooms, cadaver processing areas.
9. Police stations courthouses, correctional facilities, municipal government buildings, jails, prisons, penitentiaries, correctional institutions, bus stations, train stations.
10. Laboratories, factories, business and office buildings, restrooms, hotels and motels, and transportation terminals, maintenance vehicles.
11. Public restrooms, public facilities, waysides, travel rest areas, shower rooms, bathrooms, shower and bath areas.
12. Hotels, motels, dormitories.
13. Kitchens, bathrooms and other household areas.
14. Homes (households), condos, apartments, vacation cottages, summer homes.
15. Schools and colleges, commercial and industrial sites, churches, classrooms, community colleges, universities, athletic facilities and locker rooms, exercise rooms, exercise facilities, gyms, gymnasiums, fieldhouses.
16. Cosmetic manufacturing facilities, medical device manufacturing facilities, biotechnology firms, pharmaceutical manufacturing facilities, warehouses.
17. Health clubs, spas, tanning salons, tanning spas/beds, massage/facial salons, hair/nail/pedicure salons, barber/beauty shops, salons, tattoo parlors.
18. Museums, art galleries, post offices, performance/theater centers, banks, libraries, movie houses, bowling alleys.
19. Recycling centers.
20. Evaporative humidifier water tanks.
21. Campgrounds, playgrounds, recreational facilities, picnic facilities, sports arenas, sports complexes.
22. Food processing plants, USDA inspected food-processing facilities, federally inspected meat and poultry plants, egg processing plants, farms, equine farms, poultry farms, turkey farms, dairy farms, hog farms, meat/poultry processing plants, meat/poultry producing establishments, mushroom farms (do not apply to the mushroom crop), rendering plants, canneries, caterers, bakeries, meat packing plants, hide and leather processing plants.
23. Processing facilities for Fish, Milk, Citrus, Fruits, Vegetables, Ice cream, and Potatoes and beverage plants.
24. Tobacco Plant Premises.
25. Veterinary clinics, animal life science laboratories, animal laboratories, animal research centers, animal quarantine areas, animal holding areas, equine farms, kennels, dog/cat (animal) kennels, animal breeding facilities, breeding establishments, grooming establishments, pet animal quarters, zoos, pet shops, tack shops, operating rooms, washing areas, waiting rooms, examination rooms and other animal care facilities.
26. Farmhouses, barns, sheds, tool sheds, barns cattle barns, swine barns, sheep barns horse barns, brooder houses.
27. Household and automotive garages, boats, hips, barges, watercraft, capers, RV's, trailers, mobile homes, cars, automobiles, trucks, delivery trucks, boxcars, tankers, tank trucks, buses, trains, taxis and airplanes, helicopters.
28. Cruise lines, cruise ships, airline terminals, airports, shipping terminals, public transportation, transportation terminals.
29. Commercial florist and flower shops.
30. Basements, cellars, bedrooms, attics, living rooms and porches.

[(This product) (Product Name) (DISIN-VET)] [(when used as directed) (can be used) (is formulated to disinfect) (is formulated for use)] on (washable) hard, non-porous (inanimate) (environmental) surfaces such as:

1. Storage areas.
2. Kitchen equipment such as trash compactors.
3. Countertops (counter), countertop laminates, stovetops (stoves), sink (bathroom, kitchen), tub surfaces, shelves, racks and cards and exterior surfaces of Slurppy® machines, appliances, microwave ovens, refrigerators and ice machines.
4. Highchairs, baby cribs, diaper changing stations, infant bassinets/cribs/care equipment, folding tables, laundry pails.
5. Exhaust fans, refrigerated storage and display equipment, coils and drain pans of air conditioning, refrigeration equipment and heat pump.
6. Kennel runs, cages, kennel/cages floors, conductive flooring, examination and x-ray tables in animal premises only.
7. Hatchers, setters, trays, racks, egg flats, walls, floors, ceilings, chick boxes, egg cases, vans and trash containers.
8. Tanning spas/beds, tanning equipment, footbath surfaces.
9. Tattoo equipment. (Not for use on needles or other skin piercing instruments)
10. Hair clippers, cutting implements, plastic rollers, washable nail files.
11. Shower stalls, shower doors and curtains, bathtubs and glazed tiles, chrome plated intakes, toilets, toilet seats, toilet bowls, toilet bowl surfaces, urinals, empty diaper pails, portable and chemical toilets and latrine buckets, vanity tops, glazed porcelains, glazed tile and restroom fixtures, bathroom fixtures.
12. Windows and mirrors.
13. Tables, chairs, desks, folding tables, workstations, bed frames, lifts, washable walls, cabinets, doorknobs and garbage cans/pails, trash barrels, trash cans, trash containers, cuspidors and spittoons.
14. Sealed foundations, steps, plumbing fixtures, finished baseboards and windowsills.
15. Glass, laminated surfaces, metal, stainless steel, glazed porcelains, galvanized metal, glazed ceramic, sealed fiberglass, sealed granite, sealed marble, plastic (such as polycarbonate, polyvinylchloride, polystyrene or polypropylene), sealed limestone, sealed slate, sealed stone, sealed terra cotta, sealed terrazzo, chrome and vinyl, Plexiglass®, vanity tops.
16. Enameled surfaces, painted (finished) woodworks, Formica®, linoleum tile, vinyl and plastic upholstery, washable wallpaper.
17. Large, inflatable, non-porous plastic and rubber structure such as animals, promotional items, moonwalk, slides, obstacle course play and exercise equipment.
18. Hard, non-porous (inanimate) (environmental) surfaces of picnic tables and outdoor furniture or Non-wooden picnic tables and outdoor (patio) furniture, except cushions and wood frames. *(Note: Only one statement will be used on label.)*
19. Playground equipment.
20. Athletic training tables, physical therapy tables.
21. Automobile interiors.
22. Maintenance equipment.
23. Telephones and telephone booths.
24. Hard hats, headphones.
25. External lenses vision correction including eyeglasses (not for use on contact lenses), protective eyewear, goggles, light lens covers, optical instruments/implements.
26. Crypton Barrier fabric.

[(This product) (Product Name)] contains no phosphorus.

[(This product) (Product Name)] is a phosphate-free formulation designed to provide effective cleaning, deodorizing and disinfection in areas where housekeeping is of prime importance in controlling the hazard of cross contamination on treated surfaces.

This [(container) (bottle)] is made of (at least) (x)% post-consumer recycled plastic.

- Convenient Trigger Spray.
- Easy to Use.

- Economy size. *(to be used on applicable container)*
- Contains no [(abrasives) (bleach) (harsh acids) (phosphates)] (so it won't scratch surfaces).
- Cleans without bleaching.
- Fewer products – no need for separate deodorizer.
- Use (this product) (Product Name) on the multi-touch surfaces responsible for cross-contamination.
- Cross contamination is of major housekeeping concern in schools and industry.

[(This product) (Product Name)] has been formulated to aid in the reduction of cross-contamination on treated surfaces in schools and industry.

[(This product) (Product Name)] is a no-rinse disinfectant cleaner that disinfects, cleans and deodorizes in one labor0-saving step.

Use (this product) (Product Name) on finished floors, high speed burnished floors, conductive flooring, washable walls, tables, chairs, bathroom bowls, sinks, basins, shower stalls, tubs, glazed tiles, toilets, countertops, stove tops, exterior surfaces of appliances and refrigerators, cabinets, garbage cans, outdoor furniture (except cushions and wood frames), desks, telephones, door knobs and handles, and glass surfaces including windows and mirrors.

Disinfects, cleans, and deodorizes the following had, non-porous inanimate surfaces: floors, walls, non-medical metal surfaces, non-medical stainless steel surfaces, glazed porcelains, plastic surfaces (such as polypropylene, polystyrene, etc.).

[(This product) (Product Name)] is designed for use on (Use daily on) (the following) (Hard, non-porous environmental surfaces): vinyl, painted surfaces, plastic (surfaces), glazed ceramic, glazed porcelain, chrome, stainless steel, aluminum, laminated surfaces and baked enamel surfaces associated with floors, walls, ceilings tables, chair, countertops, telephones, fixtures, glazed tile, toilets, urinals, sinks, shower rooms and locker rooms (areas) – any washable (food and non-food contact) surface where disinfection is required. [(This product) (Product Name)]'s non-dulling formula eliminates the time and labor normally required for rinsing. A potable water rinse is required for food contact surfaces. Do not use on glasses, dishes, utensils or interior surfaces of appliances.

- Concentrate (Concentrated).
- Disinfects (Disinfectant).
- Cleans (Cleaner).
- Deodorizes (Deodorizer).
- Will not harm sealed stone, sealed grout, or glazed tile.

[(This product) (Product Name)] is a complete, chemically balanced disinfectant/sanitizer that provides clear use solutions even in the presence of hard water.

[(This product) (Product Name)] is an economical concentrate that can be used with a mop and bucket, trigger sprayer, sponge or by soaking.

[(This product) (Product Name)] can be applied through foaming apparatus, low-pressure sprayers and fogging (wet misting) systems. Follow manufacturers' instructions when using this equipment.

[(This product) (Product Name)] delivers non-acid disinfection performance (in an economical concentrate).

Antibacterial.

Efficacy tests have demonstrated that [(this product) (Product Name)] is an effective bactericide, virucide and fungicide in the presence of organic soil (5% blood serum).



[(This product) (Product Name)] is effective against household germs (bacteria).

[(This product) (Product Name)] cleans, shines, deodorizes and disinfects all hard, non-porous (household) (animal premise) (inanimate) (environmental) surfaces listed on the label.

Disinfects (and Sanitizes) kitchen surfaces (bathroom surfaces and floors). Kills germs. Kills household bacteria.

Kills common kitchen (bathroom) germs (and viruses).

[(This product) (Product Name)] is for use as a disinfectant on hard, non-porous (inanimate)(environmental) surfaces (at 847 ppm active).

Kills (99.9% of) (any disinfection organism listed) (above) (below) (on hard, non-porous (animate) (environmental) surfaces).

Kills (99.9% of) (common) (household) (kitchen) germs (on (the) floor(s)).

Kills (99.9% of) (household) (kitchen) bacteria -and/or- germs ((that get) tracked into your -or- home) (by shoes -and/or- pets -and/or- kids) (from outside) (every day).

Kills (99.9% of) (kitchen) (bathroom) (household) bacteria (on (the) floor(s))

Kills -and/or- (help(s)) eliminate(s) -and/or- disinfect(s) -and/or- destroy(s) -and/or- remove(s) -and/or- (help(s)) get(s) rid of -and/or- reduces -and/or- fights -and/or- effective against (99.9% of) (the) (common) (list use site/surface) (bacteria -and/or- viruses) -or- germs.

Kills -and/or- (help(s)) eliminate(s) -and/or- disinfect(s) -and/or- destroy(s) -and/or- remove(s) -and/or- (help(s)) get(s) rid of -and/or- reduces -and/or- fights -and/or- effective against (99.9% of) (the) ((bacteria -and/or- viruses) (and other germs)) -or- germs (commonly) found in -or- on (the) (list use site/surface).

Kills -and/or- (help(s)) eliminate(s) -and/or- disinfect(s) -and/or- destroy(s) -and/or- remove(s) -and/or- (help(s)) get(s) rid of -and/or- reduces -and/or- fights -and/or- effective against (99.9% of) (the) ((bacteria -and/or- viruses) (and other germs)) -or- germs (commonly) found in -or- on (the) (list use site/surface) surfaces your kids -and/or- pets (may) touch every day.

Kills -and/or- (help(s)) eliminate(s) -and/or- disinfect(s) -and/or- destroy(s) -and/or- remove(s) -and/or- (help(s)) get(s) rid of -and/or- reduces -and/or- fights -and/or- effective against (99.9% of) (common) (household) ((bacteria -and/or- viruses) (and other germs)) -or- germs (on) (from) (your) (children's) (pet's) toys.

Kills -and/or- (help(s)) eliminate(s) -and/or- disinfect(s) -and/or- destroy(s) -and/or- remove(s) -and/or- (help(s)) get(s) rid of -and/or- reduces -and/or- fights -and/or- effective against (99.9% of) (list disinfectant organism) ((commonly) found -in/or- on (the) (list use site/surface)).

Kills -and/or- (help(s)) eliminate(s) -and/or- disinfect(s) -and/or- destroy(s) -and/or- remove(s) -and/or- (help(s)) get(s) rid of -and/or- reduces -and/or- fights -and/or- effective against (99.9% of) (the) flu (influenza) virus ((commonly) found -in/or- on (the) (list use site/surface)). (Use of "Influenza" is allowed only when Influenza virus is listed on label.)

Kills -and/or- (help(s)) eliminate(s) -and/or- disinfect(s) -and/or- destroy(s) -and/or- remove(s) -and/or- (help(s)) get(s) rid of -and/or- reduces -and/or- fights -and/or- effective against (the) (list use site/surface) (from) (99.9% of) (common) (household) ((bacteria -and/or- viruses) (and other germs)) -or- germs (this season -or- flu season).

Kills bacteria on (the) surfaces (your kids -and/or- pets touch every day).

[(Kills) (Eliminate(s)) (Remove(s)) (Get(s) rid of) (99.9% of) (the) germs -and/or- bacteria -and/or- viruses (in your home -and/or- (office -or- work (place) (area) (environment)) (school) (classroom) (kitchen)).

For use in [(automated dilution systems) (automated) (dilutions systems) (Dilution System Trade Name)]. **(1839-167)**

This detergent/disinfectant has been designed specifically for schools, food processing plants, food service establishments where housekeeping if of prime importance.

[(This product) (Product Name)] is an effective one-step sanitizer-cleaner for us on hard, non-porous, non-food contact surfaces (at 425 ppm active).

[(This product) (Product Name)] meets efficacy standards for hard, non-porous (inanimate) (environmental)] surface for non-food contact sanitizers.

[(This product) (Product Name)] is an effective non-food contact sanitizer in the presence of soils on hard non-porous (inanimate) (environmental) non-food contact surfaces.

Effective sanitizer in the presence of soils.

[(This product) (Product Name)] is an effective disinfectant/non-food contact sanitizer in the presence of 5% serum contamination.

Effective sanitizer in the presence of 5% serum contamination.

Sanitizes kitchen surfaces (bathroom surfaces and floors).

[(This product) (Product Name)] is a versatile sanitizer and broad-spectrum disinfectant formulated for us in Ultrasonic Baths (Ultrasonic cleaning units).

Kills Avian Influenza A virus on pre-cleaned environmental surfaces.

Kills (insert virus name from approved organisms listing for this product).

[(This product) (Product Name)] is a versatile cleaner, sanitizer and broad-spectrum disinfectant formulated for us on batch and therapy equipment (e.g. Whirlpools).

Non-Food Contact Sanitizer.

For use in:

- Federally inspected meat and poultry plants on all hard, non-porous (inanimate) (environmental) surfaces in inedible product processing areas, non-processing areas and/or exterior areas. All surfaces must be thoroughly rinsed with potable water.
- Federally inspected meat and poultry pans as a floor and wall cleaner for us in all departments. Food products and packaging material must be removed from the room or carefully protected. All surfaces must be throaty rinsed with potable water.
- Federally inspected meat and poultry plants as a disinfectant agent for us in all departments. Food products and packaging material must be removed from the room or carefully protected use product in accordance with its label. All surfaces must be thoroughly rinsed with potable water.

*Salmonella enterica* (*Salmonella*), and *Staphylococcus aureus* (*Staph*) are common germs found where food is prepared and stored. [(This product) (Product Name)] kills these harmful germs and helps prevent the spread of food borne contamination on treated kitchen surfaces listed on this label. A potable water rinse is required after application on food contact surfaces. [(This product) (Product Name)] is not for use on dishes, glassware, eating utensils, or interior surfaces of appliances.

[(This product) (Product Name)] cleans by removing dirt, grime and food soils in food preparation and processing areas. Its non-abrasive formula will not harm (scratch) surfaces it cleans, disinfects and eliminates odors leaving surfaces smelling clean and fresh Use where odors are a problem.

[(This product) (Product Name)] provides long-lasting freshness against tough (pet) odors, such as odors from litter boxes and pet accidents.

[(This product) (Product Name)] is a versatile disinfectant/sanitizer for Veterinarian, Veterinarian Practice, Animal Care, Animal Laboratory, and Agricultural and Farm Premise applications.

[(This product) (Product Name)] cleans by removing dirt, grime, mold, mildew, blood, urine, fecal matter and other common soils found in animal housing facilities, livestock, swine or poultry facilities, grooming facilities, farms, kennels, pet stores, veterinary clinics, laboratories or other small animal facilities. It (also) eliminates odors leaving surfaces smelling clean and fresh.

[(This product) (Product Name)] can be used to disinfect, clean and deodorize terrarium and small animal cages, hot rock, substrate and cage furniture (plastic terrarium ornaments, driftwood, heat caves and water dishes). *(Use on rocks and driftwood not allowed in California.)*

[(This product) (Product Name)] cleans, disinfects and deodorizes (hard, non-porous (environmental) (inanimate) surfaces) in one step. [(Its non-abrasive formula is designed for use on) (Use daily on) (Use daily to clean and disinfect)] on (hard, non-porous (inanimate) (environmental) surfaces): plated or stainless steel, aluminum, chrome, glazed porcelain, glazed tile, laminated surfaces (associated with floors, walls, tables, chairs, countertops, cages, kennels, animal equipment) found in [(animal premises) (barns, pens and stalls) (animal housing facilities)].

[(This product) (Product Name)] has been designed for veterinarians, animal groomers, hair stylists, barbers and beauticians, for use in disinfecting and maintaining clippers. It acts as a virucide against animal pathogens and bactericide while also cleaning. Regular use will help to maintain blades that operate with reduced friction and with smoother clipping action. Will help to prolong equipment life. [(This product) (Product Name)] is designed for use in pet salons, animal hospitals, barber and beauty shops. When used as directed it will disinfect metal clipper blades as well as many other hard, non-porous (inanimate) (environmental) surfaces.

[(This product) (Product Name)] is for Poultry Premise Sanitation (Hatcheries and Breeder/Growout Houses):

|                    |                    |                       |
|--------------------|--------------------|-----------------------|
| Egg Receiving Area | Tray Dumping Area  | Chick Processing Area |
| Egg Holding Area   | Chick Holding Area | Chick Loading Area    |
| Setter Room        | Hatchery Room      | Poultry Buildings     |
| Broiler Houses     | Growout Houses     | Incubators            |

[(This product) (Product Name)] is for Swine Premise Sanitation:

|                           |                   |            |
|---------------------------|-------------------|------------|
| Farrowing Barns and Areas | Dressing Plants   | Blocks     |
| Waterers and Feeders      | Loading Equipment | Creep Area |
| Hauling Equipment         | Nursery           | Chutes     |

[(This product) (Product Name)] is an effective disinfectant/sanitizer/virucide to be used in hatchery cleaning, effectively removing (removes) hatchery soils from surfaces, even in hard water up to 250 ppm hardness as CaCO<sub>3</sub>. Soil emulsifiers, wetting agents, citrus solvent dispersing agents, detergent builders and sequestrants assure good cleaning functions.

[(This product) (Product Name)] can be used on any environmental, hard, non-porous surface in the hatchery not harmed by water itself.

[(This product) (Product Name)] is for use in the Poultry industry.

Kills Gram-negative and Gram-positive bacteria, fungi and viruses associated with the avian hatchery industry, poultry, swine and livestock premises, laboratory animal facilities and kennels.

[(This product) (Product Name)] is an effective disinfectant on hard, non-porous [(animate) (environmental)] surfaces against a broad spectrum of Gram-negative bacteria, Gram-positive bacteria and viruses that are poultry pathogens or that can affect chick quality and hatchability.

[(This product) (Product Name)] is an effective, disinfectant/cleaner/sanitizer that helps to limit the spread of contamination from treated area to treated area in the hatchery during the actual cleaning process.

[(This product) (Product Name)] can be applied by cloth, mop, sponge or sprayer. It kills bacteria and *Aspergillus Fumigatus*. It is a potent blend of quaternary ammonium compounds and citrus terpene.

[(This product) (Product Name)] is a one-step disinfectant that is effective against a broad spectrum of bacteria, is virucidal and inhibits the growth of mold and mildew and their odors when used as directed.

**FUNGICIDAL ACTIVITY:** [(This product) (Product Name)] is effective against Trichophyton mentagrophytes (athlete's foot fungus) (a cause of Ringworm) (a cause of Ringworm of the food) and *Aspergillus niger* on inanimate surfaces in locker rooms, dressing rooms, shower and bath areas, and exercise facilities.

Kills Athlete's Food fungus on bathroom surfaces.

[(This product) (Product Name)] is an effective fungicide against Trichophyton mentagrophytes (athlete's foot fungus) (a cause of Ringworm) when used on surfaces in areas such as locker rooms, dressing rooms, shower and bath areas, exercise facilities.

[(This product) (Product Name)] inhibits bacterial growth on moist surfaces and deodorizes by killing microorganisms that cause offensive odors. *(Not for use in California.)*

[(This product) (Product Name)] is effective at controlling [(mold and mildew) (odor)] on shower curtains.

[(It) (This product) (Product Name)] inhibits the growth of mold and mildew, leaving bathrooms and kitchens clean and fresh smelling.

Eliminates odors caused by bacteria (and) (mildew) (and) (non-fresh foods).

[(This product) (Product Name)] is for non-scratch cleaning of showers and tubs, shower doors and curtains, fixtures and toilet bowls.

[(This product) (Product Name)] will not leave a grit or soap scum.

[(This product) (Product Name)] is a (concentrated), non-acid (bowl and) bathroom cleaner, which cleans, disinfects and deodorizes in one easy step. It cleans, disinfest and deodorizes surfaces by killing many odor-causing microorganisms and mold and mildew. [(its non-abrasive formula is designed for us) (Use daily)] on hard, non-porous (inanimate) (environmental) restroom surfaces: glazed ceramic (restroom) tile, glazed porcelain, chrome, stainless steel and plastic surfaces associated with floors, walls, fixtures, toilets, urinals, sinks, shower rooms and locker rooms.

[(This product) (Product Name)] can be used in work areas such as tool rooms and garages for odor control and light duty cleaning.

Great for us [(on) (in the)] [(kitchen), (bathroom), (floors) (and) (other household areas)].

[(Removes) (eliminates)] odors. Deodorizes. Will not harm most surfaces.

[(This product) (Product Name)] [(maximizes) (improves)] labor results by effectively controlling odors.

When used as directed, [(this product) (Product Name)] will deodorize surfaces in restroom and toilet areas, behind and under sinks and counters, garbage cans and garbage storage areas, and other places where bacterial growth can cause malodors.

[(This product) (Product Name)] [(controls) (reduces) (eliminates) (neutralizes) (destroys)] odors to make you [(home) (kitchen) (bathroom)] sanitary.

[(This product) (Product Name)] neutralizes musty odors and tough odors from smoke, pet accidents, and spills on contact.

[(This product) (Product Name)] is specially formulated to effectively eliminate offensive odors caused by mold and mildew.

[(This product) (Product Name)] is effective against odors caused by animal waste, septic tank or sewage backup, smoke and bathroom and kitchen odors.

[(This product) (Product Name)] is for use in evaporative household and commercial humidifiers. Use of [(this product) (Product Name)] will control unpleasant [(malodors) (odors)].

Humidifier Bacteria-Algae treatment is a bacteriostat which can control the build-up of bacteria and algae in water tanks of portable, evaporative humidifiers. *(1839-120) (Not for use in CA.)*

[(This product) (Product Name)] is a concentrated disinfectant that is effective against a broad spectrum of bacteria, is virucidal and fungicidal, and eliminates odor-causing bacteria when used as directed.

[(This product) (Product Name)] deodorizes by killing microorganisms causing odors.

Deodorizes by killing most microorganisms that cause offensive odors.

[(This product) (Product Name)] is a complete, chemically balanced deodorizer, and disinfectant providing clear use solutions. It kills bacteria, molds and viruses that cause disease and economic losses. It disinfects in 5% soil load and 250-ppm hard water.

[(This product) (Product Name)] is a one-step cleaner and [(deodorant) (odor-counteractant) (odor-neutralizer)] designed for [(general cleaning), (and) (disinfecting), (deodorizing) (and controlling mold and mildew)] on hard, non-porous (inanimate) (environmental) surfaces.

[(This product) (Product Name)] cleans, disinfects and deodorizes surfaces by killing odor-causing microorganisms and oil and mildew. Its non-abrasive formula is designed for use on (restroom surfaces): glazed ceramic (restroom) tile, glazed porcelain, chrome, stainless steel and plastic surfaces associated with floors, walls, fixtures, toilets, urinals, sinks, shower rooms, and locker rooms.

Kills odor-causing bacteria in the [(kitchen) (bathroom)].

[(Malodor Activity) (Odor) (Counteractancy)] – [(eliminates) (destroys)] odors and odor-causing bacteria on hard non-porous (inanimate) (environmental) surfaces in restroom areas, behind and under sinks and counters, and storage areas (and other hard non-porous (inanimate) (environmental) surfaces) where bacterial growth can cause malodors.

Cleans everyday kitchen messes.

Cleans non-food contact kitchen surfaces and food preparation areas.

One-step cleaner.

Cleans and shines.

Will not harm most surfaces. For a cleaner, fresher household. Removes stains. Removes dirt. Non-staining. Clear formula

Cleans everyday kitchen messes like dirt, grease and food stains. Cuts through tough grease and grime.

Floor cleaner.

[(This product) (Product Name)] provides effective cleaning strength that will not dull metal-interlock floor finishes, and does not require a rinse prior to recoat.

[(This product) (Product Name)] is for use in kitchens, bathrooms, and other household areas.

[(This product) (Product Name)] is a multi-surface cleaner, deodorizer and disinfectant. Use on windows, mirrors, and other non-glass contact glass surfaces.

Use [(this product) (Product Name)] to disinfect and sanitize non-porous salon/barber tools and instruments such as combs, clippers, brushes, plastic rollers, trimmers, razors, scissors, blades, tweezers, baths, manicure instruments and pedicure instruments.

Use [(this product) (Product Name)] to disinfect non-porous salon/barber tools and instruments such as combs, clippers, brushes, plastic rollers, trimmers, razors, scissors, blades, tweezers, baths, manicure instruments, pedicure instruments, and footbath surfaces.

[(This product) (Product Name)] is an effective antimicrobial cleaner designed for use by wholesale and retail florists, shippers and green houses.

When used as directed, [(this product) (Product Name)] will disinfect hard, non-porous (inanimate) (environmental) surfaces such as flower buckets, floors and walls of coolers, design and packing benches, and countertops.

[(This product) (Product Name)] can be relied on to deodorize coolers, buckets, garbage pails and other areas where obnoxious odors may develop.

Use [(this product) (Product Name)] to clean, disinfect and deodorize flower buckets, walls and floors of coolers, shippers, greenhouse packing areas, garbage pails and other areas where obnoxious odors may develop.

[(This product) (Product Name)] can be used as a general purpose antimicrobial detergent in florist shops, wholesale florist, shippers, greenhouse packing areas and other commercial floriculture places for efficient cleaning and antimicrobial action against certain bacteria which cause: *(Not for use in California.)*

1. Plugging of stems with slime, which reduces uptake of water for various flower including roses, chrysanthemums, gladioli and tulips.
2. Production of ethylene gas, which may injure blooms of the various sensitive flowers including carnations, snapdragons, some orchids, baby's breath, sweet peas, freesia and alstroemeria.

Use (this product) (Product Name) to clean, sanitizer and disinfect hard non-porous (inanimate) (environmental) surfaces of personal protective safety equipment, protective headgear, hard hats, half mask respirators, full face breathing apparatus, gas masks, goggles, spectacles, headphones, face shields, hearing protectors and hard non-porous surfaces of ear muffs. Rinse all equipment that comes in prolonged contact with skin before reuse with clean warm water (about 120°F), and allow to air dry. (Precaution: Cleaning at 120°F temperature will avoid

overheating and distortion of the personal safety equipment that would necessitate replacement.)

Use to clean and disinfect non-medical (i.e. industrial and firefighting) respirators in industrial, commercial and institutional premises.

[(This product) (Product Name)] is effective in hard water and in the presence of moderate soil loads, as part of a total sanitation program.

Minimizes spread of contamination on treated surfaces during clean up as it both cleans and disinfects.

Pathogenic fungicide.

Contains sequestering agents to prevent the precipitation of mineral and metals from hard water.

For use in households.

[(This product) (Product Name)] is for use as a disinfectant/virucide on hard, non-porous (inanimate) (environmental) surfaces.

[(This product) (Product Name)] destroys many odors as it sanitizes and disinfects.

## DIRECTIONS FOR USE

*(Note to Reviewer: Brackets [ ] indicate that one option within the brackets MUST be used in the final label text. Each option within brackets is enclosed in a set of parenthesis (.).)*

*(Note to Reviewer: The following statement will be used on all labels.)*

It is a violation of Federal Law to use [(This product) (Product Name)] in a manner inconsistent with its labeling.

[(This product) (Product Name)] is not for use on Medical device surfaces.

*(Note to Reviewer: One of the following statements will be used on all labels with applicable use sites – i.e. kitchens and food processing areas, except for Fogging directions for use.)*

Before using [(this product) (Product Name)], food products and packaging materials must be removed from the room or carefully protected. Do not use [(this product) (Product Name)] to clean or disinfect utensils, glassware, dishes or interior surfaces of appliances.

OR

Before use in federally inspected meat and poultry food processing plants and dairies, food products and packaging material must be removed from room or carefully protected.

OR

Before using [(this product) (Product Name)], food products and packaging materials must be removed from the room or carefully protected.

**DISINFECTATION PERFORMANCE IN NON-MEDICAL FACILITIES (Households, Schools, Restaurants, Food Services, Dairies, Farms, Beverage and Food Processing Plants and Other Non-Medical Facilities):** At ¼ ounce (of (this product) (Product Name)) to one (1) gallon of water use level (or equivalent use dilution) (425 ppm active) and with a 10-minute contact time, [(this product) (Product Name)] is bactericidal according to the AOAC Use Dilution test method on hard, non-porous (inanimate) (environmental) surfaces, modified in the presence of 5% organic serum against:

*Staphylococcus aureus* (ATCC 6538)

*Salmonella enterica* (ATCC 10708)

**NON-FOOD CONTACT SANITIZING PERFORMANCE:** At ¼ ounce (of (this product) (Product Name)) per (one) (1) gallon use-level (425 ppm active) (or equivalent use dilution), [(this product) (Product Name)] was evaluated in the presence of 5% serum with a 2-minute contact time and found to be effective against the following organisms on hard, non-porous (inanimate) (environmental) surfaces:

*Staphylococcus aureus* (ATCC 6538)

*Enterobacter aerogenes* (ATCC 13048)

**FUNGICIDAL PERFORMANCE:** At ¼ ounce (of (this product) (Product Name)) per (one) (1) gallon of water use level (425 ppm active) (1:512) (or equivalent use dilution), [(this product) (Product Name)] was evaluated in the presence of 5% serum and up to 250-ppm hard water with a 10-minute contact time and found to be effective against the following fungi on hard, non-porous (inanimate) (environmental) surfaces:

*Aspergillus niger* (ATCC 16404)

*Candida albicans* (ATCC 10231)

*Aspergillus fumigates* (ATCC 36607)

At ½ ounce (of (this product) (Product Name)) per (one) (1) gallon of water use level (847 ppm active) (or equivalent use dilution) and with a 10-minute contact time, [(this product) (Product Name)] was evaluated in the presence of 5% blood serum and up to 250-ppm hard water and found to be effective against the following on hard, non-porous (inanimate) (environmental) surfaces:

*Trichophyton mentagrophytes* (ATCC 9533)

**PREPARATION OF DISINFECTION USE SOLUTION:** For heavily soiled areas, a preliminary cleaning is required. [(Add) (Mix)] [(¼-ounce) ((a) (one) ¼-ounce packet)] (of (this product) (Product Name)) [(to) (with)] [(one) (1)] gallon of water (1:512) (or equivalent use dilution) (425 ppm active) to disinfect hard, non-porous (inanimate) (environmental) surfaces. Apply use solution [(using) (with) a brush, cloth, mop, sponge, auto scrubber or mechanical spray device sprayer ((hand pump) coarse pump or trigger spray device) or by immersion so as to thoroughly wet surfaces. For sprayer applications, spray 6-8 inches from surface. Do not breath spray. Rub with brush, sponge or cloth Treated surfaces must remain wet for 10 minutes. [(Rinse) (Wipe up excel liquid (with a paper towel)) (Allow to air dry)]. [(Rinsing of floors is not necessary unless they are to be waxed or polished.) (\*\* Rinse all treated surfaces that come in contact with food such as countertops, appliances, tables and stovetops with potable water before reuse.)] Do not use [(this product) (Product Name)] to clean or disinfect utensils, glassware, dishes or interior surfaces of appliances. Change cloth, sponge or towel frequently to avoid redeposition of soil. [(A fresh solution must be prepared) (Prepare a fresh solution)] at least daily or when use dilution becomes visibly [(diluted) (soiled) (dirty)]. (**Note to Reviewer:** *This statement will be used on all labels except for labels of products used exclusively on floors.*)

**CLEANING AND DISINFECTION:** For heavily soiled areas, a pre-cleaning step is required. For one-step cleaning and disinfection, use a ¼ ounce (of (this product) (Product Name)) per (one) (1) gallon of water use solutions (or equivalent use dilution) (425 ppm active). Apply use solution to hard non-porous (inanimate) (environmental) surfaces using a brush, sponge, cloth, mop, auto scrubber or mechanical spray devise ((hand pump) coarse pump or trigger spray device) or be immersion so as to thoroughly wet surface. For sprayer applications, spray 6-8 inches from surface. Do not breather spray. Rub with brush, cloth or sponge. Allow surfaces to remain wet for 10 minutes. [(Rinse) (Wipe up excess liquid (with a paper towel)) (Allow to air dry)]/ Change cloth, sponge or towels frequently to avoid redeposition of soil. [(a fresh solution must be prepared) (Prepare a fresh solution)] at least daily or when use solution becomes visibly [(diluted) (soiled) (dirty)].

(OR)

**FOR USE AS A ONE-STEP CLEANER/DISINFECTANT:**

1. Pre-clean heavily soiled areas.
2. Apply (use solution of) ¼ ounce (of (this product) (Product Name)) per (one) (1) gallon (425 ppm active) (or equivalent use dilution) to hard, non-porous (inanimate) (environmental) surfaces using a sponge, brush, cloth, mop, auto scrubber or



- mechanical spray device ((hand pump) coarse pump or trigger spray device) or by immersion. For spray applications, spray 6-8 inches from surfaces. Do not breath spray.
3. Rub with brush, cloth or sponge.
  4. To disinfect, all surfaces must remain wet for ten (10) minutes.
  5. [(Rinse) (Wipe up excess liquid (with a paper towel)) (Allow to air dry)].
  6. Change cloth, sponge or towels frequently to avoid redeposition of soil. [(A fresh solution must be prepared) (Prepare a fresh solution)] at least daily or when use solution becomes visibly [(diluted) (soiled) (dirty)].

**PREPARATION OF NON-FOOD CONTACT SANITIZER USE SOLUTION:** For heavily soiled areas, a preliminary cleaning is required. [(Add) (Mix)] [(¼-ounce) ((a) (one) ¼-ounce packet)] (of (this product) (Product Name)) [(to) (with)] [(one) (1)] gallon of water (or equivalent use dilution) (425 ppm active). Apply sanitizer use solution to hard, non-porous (inanimate) (environmental) non-food contact surfaces with a brush, cloth, mop, sponge, auto scrubber, mechanical spray device ((hand pump) coarse pump or trigger spray device) or by immersion, so as to thoroughly wet surfaces to be sanitized. For spray applications, spray 6-8 inches from surface. Do not breathe spray. Rub with brush, sponge or cloth. Treated surfaces must remain wet for at least 2 minutes. [(Rinse) (Wipe up excess liquid (with a paper towel)) (Allow surfaces to air dry)]. Change cloth, sponge or towels frequently to avoid redeposition of soil. [(A fresh solution must be prepared) (Prepare a fresh solution)] at least daily or when use solution becomes visibly [(dilute) (soiled) (dirty)].

**TO SANITIZE (AND DEODORIZE):** For heavily soiled areas, a preliminary cleaning is required. Apply sanitizer use solution of ¼ ounce (of (this product) (Product Name)) to (one) (1) gallon of water to hard, non-porous (inanimate) (environmental) non-food contact surfaces, thoroughly wetting as required. Apply with a brush, cloth, mop, sponge, auto scrubber or mechanical spray device ((hand pump) coarse pump or trigger spray device) or by immersion. For spray applications, spray 6-8 inches from surface. Do not breathe spray. Rub with brush, cloth or sponge. Let stand 2 minutes. [(Rinse) (Wipe up excess liquid (with a paper towel)) (Allow surfaces to air dry)]. Change cloth, sponge or towels frequently to avoid redeposition of soil. [(A fresh solution must be prepared) (Prepare a fresh solution)] at least daily or when use solution becomes visibly [(dilute) (soiled) (dirty)].

**FOR DISINFECTING HARD, NON-POROUS (INANIMATE) (ENVIRONMENTAL) SURFACES AGAINST AVIAN INFLUENZA A (H3N2) VIRUS:** For use in animal housing facilities, follow **SPECIAL INSTRUCTIONS FOR INACTIVAING AVIAN INFLUENZA A (H3N2) VIRUS** in Animal Premise section.

**GENERAL DISINFECTION/FUNGICIDAL USE DILUTION TABLE – ¼ oz/gal only**

| Ounces of Product | Amount of Water |
|-------------------|-----------------|
| 1/16 ounce        | 1 quart         |
| 1/8 ounce         | ½ gallon        |
| ¼ ounce           | 1 gallon        |
| 0.625 ounce       | 2½ gallons      |
| 1.250 ounce       | 5 gallons       |
| 2.500 ounces      | 10 gallons      |

**FUNGICIDAL/ANIMAL VIRUCIDAL USE DILUTION TABLE – ½ oz/gal only**

| Ounces of Product | Amount of Water |
|-------------------|-----------------|
| 0.125 ounce       | 1 quart         |
| ¼ ounce           | ½ gallon        |
| ½ ounce           | 1 gallon        |
| 1¼ ounces         | 2½ gallons      |
| 2½ ounces         | 5 gallons       |
| 5.0 ounces        | 10 gallons      |

**DILUTION TABLE:**

For General or Broad Spectrum claims                      ¼ oz/gal. water

For Animal Virucidal claims ½ oz/gal. water  
For Non-Food Contact Sanitizing claims ¼ oz/gal. water  
For Fungicidal claims\* ¼-½ oz/gal. water

(\***Note to Reviewer:** When targeting *T. menta*, ½ oz/gal of water must be used for fungicidal claims.)

## FOOD PROCESSING PREMISES

**DIRECTIONS FOR FOOD PROCESSING PLANTS:** For use on non-food contact hard non-porous (inanimate) (environmental) surfaces such as floors, walls, tables, garbage cans and disposal areas. Follow the **PREPARATION OF DISINFECTION USE SOLUTION** use direction.

**DIRECTIONS FOR FOOD STORAGE AREAS:** For use on non-food contact hard non-porous (inanimate) (environmental) surfaces such as shelves, floor, walls and tables. Follow the **PREPARATION OF DISINFECTION USE SOLUTION** use direction.

**FOR USE AS A CLEANER/DISINFECTANT IN FOOD PROCESSING PLANTS:**

1. For heavily soiled areas, thoroughly clean surface prior to disinfecting.
2. Apply use solution of ¼ oz. (of (this product) (Product Name)) per (one) (1) gallon of water evenly over hard non-porous (inanimate) (environmental) surfaces using a brush, cloth, mop, sponge, auto scrubber or mechanical spray device ((hand pump) coarse pump or trigger spray device) or by immersion. Be sure to wet all surfaces thoroughly. For spray applications, spray 6-8 inches from surface. Do not breathe spray. Rub with brush, cloth or sponge.
3. Allow product to remain on surface for ten (10) minutes.
4. [(Wipe with clean cloth, sponge, or paper towel) (Wipe excess liquid (with a paper towel))]. Change cloth, sponge or towels frequently to avoid redeposition of soil.
5. When disinfecting food contact surfaces used for food preparation, rinse surfaces thoroughly with potable water. [(This product) (Product Name)] must not be used to clean the following surfaces: utensils, glassware, dishes or interior surfaces of processing equipment.
6. [(A fresh solution must be prepared) (Prepare a fresh solution)] at least daily or when use solution becomes visibly [(diluted) (soiled) (dirty)].

**TO DISINFECT FOOD-PROCESSING AND TOBACCO PREMISES:** For heavily soiled areas, a pre-cleaning step is required. For use on floors, walls, storage areas and other hard non-porous (inanimate) (environmental) surfaces, [(add) (mix)] [(¼-ounce) ((a) (one) ¼-ounce packet)] (of (this product) (Product Name)) [(to) (with)] [(one) (1)] gallon of water (or equivalent use dilution) (425 ppm active). Apply solution with a brush, mop, cloth, sponge, auto scrubber or mechanical spray device ((hand pump) coarse pump or trigger spray device) or by immersion so as to wet all surfaces thoroughly. For sprayer applications, spray 6-8 inches from surface. Rub with brush, cloth, or sponge. Allow surfaces to remain wet for 10 minutes. [(Then remove excess liquid (with a paper towel) and rinse the surface with potable water) (After use, all surfaces in the area must be thoroughly rinsed with potable water)]. Change cloth, sponge or towels frequently to avoid redeposition of soil. [(A fresh solution must be prepared) (Prepare a fresh solution)] at least daily or when use solution becomes visibly [(dilute) (soiled) (dirty)].

**TO DISINFECT FOOD SERVICE ESTABLISHMENT FOOD CONTACT SURFACES:** For heavily soiled areas, a pre-cleaning step is required. For use on countertops, exterior surfaces of appliances, and tables and other hard non-porous (inanimate) (environmental) surfaces, [(add) (mix)] [(¼-ounce) ((a) (one) ¼-ounce packet)] (of (this product) (Product Name)) [(to) (with)] [(one) (1)] gallon of water (or equivalent use dilution) (425 ppm active). Apply solution with a brush, mop, cloth, sponge, auto scrubber or mechanical spray device ((hand pump) coarse pump or trigger spray device) or by immersion so as to wet all surfaces thoroughly. For sprayer applications, use a coarse spray device. For sprayer applications, spray 6-8 inches from surface. Rub with brush, cloth, or sponge. Allow surfaces to remain wet for 10 minutes. [(Then remove excess liquid (with a paper towel) and rinse the surface with potable water) (After use, all surfaces in the area must be thoroughly rinsed with potable water)]. Change cloth, sponge

or towels frequently to avoid redeposition of soil. [(A fresh solution must be prepared) (Prepare a fresh solution)] at least daily or when use solution becomes visibly [(dilute) (soiled) (dirty)].

**FOR USE ON NON-FOOD CONTACT SURFACES AS A GENERAL DISINFECTANT IN THE BREWERY INDUSTRY:** Follow the [(*DIRECTIONS FOR FOOD PROCESSING PLANTS*) (*FOR USE AS A CLEANER/DISINFECTANT IN FOOD PROCESSING PLANTS*) (*TO DISINFECT FOOD-PROCESSING AND TOBACCO PREMISES*)] use directions.

**DISINFECTING POTATO STORAGE AREA AND EQUIPMENT:** Remove all potatoes prior to disinfection of potato storage area and equipment. Follow the [(*DIRECTIONS FOR FOOD PROCESSING PLANTS*) (*FOR USE AS A CLEANER/DISINFECTANT IN FOOD PROCESSING PLANTS*) (*TO DISINFECT FOOD-PROCESSING AND TOBACCO PREMISES*)] use directions.

**DIRECTIONS FOR FOGGING IN DAIRIES, BEVERAGE AND FOOD PROCESSING PLANTS:** *All surfaces must be cleaned and disinfected in accordance with label directions prior to fogging.* Prior to fogging, good products and packaging material must be removed from the room or carefully protected. After cleaning, fog desired areas using 1 quart per 1000 cubic feet of room area with a solution containing ¾ ounce of product to 1 gallon of water (1200 ppm active) (or equivalent use dilution). Wear a dust mist respirator when mixing the use solution and pouring it into the fogging apparatus. Vacate the area of all personnel during fogging and for a minimum of 2 hours after fogging and a minimum of 4 air exchanges (ACH) per hour in the facility. All food contact surfaces must be sanitized with an EPA approved food contact sanitizer solution prior to use. [(All food contact surfaces must be thoroughly rinsed prior to reuse with potable water.) Allow food contact surfaces to drain thoroughly before operations are resumed]].

**NOTE:** The fog generated is irritation to the eyes, skin and mucous membranes. Under no circumstances must a room or building be entered by anyone without two hours of the actual fogging and a minimum of 4 air exchanges (ACH) per hour in the facility; If the building must be entered, then the individuals entering the building must wear a self-contained respirator approved by NIOSH/MSHA, goggles, long sleeves and long pants.

#### **SANITIZER DIRECTIONS FOR NON-FOOD CONTACT SURFACES IN FOOD PROCESSING FACILITIES**

**SHOE (BOOT) BATH SANITIZER DIRECTIONS:** To prevent cross contamination from area to area in animal areas, and the packaging and storage areas of good plants, shoe baths containing one inch of freshly made sanitizing solution must be placed at all entrances to buildings, animal hatcheries and at all the entrances to the production and packaging rooms. Scrape waterproof shoes and place in a ¼-ounce (of (this product) (Product Name)) per (one) (1) gallon of water use solution (or equivalent use dilution) (847 ppm active) for 2 minutes prior to entering area. [(A fresh solution must be prepared) (Prepare a fresh solution) (Change the sanitizing solution in the bath) at least daily or sooner if solution appear visibly [(diluted) (soiled) (dirty)].

**FOR FOOT DIP OF WATER PROOF FOOTWEAR:** Use (this product) (Product Name) at ¼ ounce per (one) (1) gallon of water in foot dip tray. Shoe baths must contain at least 1 inch of freshly made solution and be placed at the entrances to buildings. Scrape shoes and place in diluted solution for 2 minutes before entering building. [(A fresh solution must be prepared) (Prepare a fresh solution) (Change the sanitizing solution in the bath) at least daily or sooner if solution appears visibly [(dilute) (soiled) (dirty)]. (**1839-167**)

**SHOE FOAM DIRECTIONS:** To prevent cross contamination from area to area in animal areas and the packaging and storage areas of food plants, apply a foam layer approximately 0.5 to 2 inches thick made from a solution of ¼ to ½ ounces per (one) (1) gallon of water (or equivalent use dilution) (425 to 847 ppm active) at all entrances to buildings, hatcheries, production and packaging rooms by using a foam generating machine or aerator to apply foam layer. Follow the foaming directions as specified by the manufacturer of the foam generator/aerator. Scrape

waterproof shoes. Stand and/or walk through foamed area for 2 minutes prior to entering rea. Foam area must be washed and replaced at least daily or when it appears visibly [(dilute) (soiled) (dirty)].

*(For food processing or other facilities that have installed entryway sanitizing systems:)*

**ENTRYWAY SANITIZING SYSTEMS:** To prevent cross contamination from area to area, set the system to deliver (¼ – ½ ounces per (one) (1) gallon of water) (425 – 847 ppm active) of sanitizing solution. The [(spray) (foam)] must cover the entire path of the doorway. Set the system so that a continuous wet blanket of sanitizer solution is delivered to the floor.

Do not mix other foam additives to the sanitizing solution.

**GLOVE DIP SANITIZER DIRECTIONS:** To prevent cross contamination from area to area in animals areas and the packaging and storage areas of food plants, dip pre-washed (plastic, latex or other synthetic rubber) gloved hands into a suitable clean container that contains enough freshly made sanitizing solution to cover the gloved area. Do not let sanitizing solution come into contact with the exposed skin. Make up the sanitizing solution by addition ¼ ounce (of (this product) (Product Name)) per (one) (1) gallon of water (or equivalent use dilution) (425 ppm active). [(Dip) (Soak)] in solution for 60 seconds and then allow glove to remain wet for 2 minutes. **POTABLE WATER RINSE IS NOT REQUIRED.** [(A fresh solution must be prepared) (Prepare a fresh solution) (Change the sanitizing solution in the bath) at least daily or sooner if solution appears visibly [(dilute) (soiled) (dirty)].

**GLOVE SPRAY SANITIZER DIRECTIONS:** To prevent cross contamination from area to area in animals areas and the packaging and storage areas of food plants, spray pre-washed (plastic, latex or other synthetic rubber) gloves enough freshly made sanitizing solution to cover the gloves. **Do not let sanitizing solution come into contact with the exposed skin.** Make up the sanitizing solution by adding ¼ ounce (of (this product) (Product Name)) per (one) (1) gallon of water (or equivalent use dilution) (425 ppm active). Apply use solution prior to [(usage) (wearing)] using a mechanical spray devise ((hand pump) coarse pump or trigger spray device). Completely cover all glove surfaces with use solution. After applying solution, allow gloves to soak in solution for [(60 second) (1 minute)] and then allow gloves to remain wet for 2 minutes, let air dry thoroughly before wearing gloves. **POTABLE WATER RINSE IS NOT REQUIRED.** [(A fresh solution must be prepared) (Prepare a fresh solution) (Change the sanitizing solution in the bath) at least daily or sooner if solution appears visibly [(dilute) (soiled) (dirty)].

### **MUSHROOM FARM INDUSTRY USE DIRECTIONS**

**Site Preparation:** The first step in any ongoing sanitation program must be the removal of gross contamination and debris. This may be accomplished by using a shovel, broom, or vacuum, depending on the area to be disinfected.

**Disinfection:** For heavily soiled areas, pre-clean first. Use a ¼-ounce (of (this product) (Product Name)) per (one) (1) gallon of water (or equivalent use dilution) use solution. Wet all hard non-porous (inanimate) (environmental) surfaces thoroughly. Treated surfaces must remain wet for 10 minutes. Let air dry. Prepare a fresh solution for each use.

**For Heavy Duty Cleaning:** When greater cleaning is desired, use a 1 ounce (of (this product) (Product Name)) per (one) (1) gallon of water (or equivalent use dilution) use solution. Heavily soiled areas may require repeated cleaning before treatment.

**DO NOT APPLY TO THE MUSHROOM CROP, COMPOST OR CASING.** Rinse treated surfaces with potable water before they contact the crop, compost or casing.

### **ANIMAL PREMISES**

*(\*\*Note to Reviewer: Use of higher dilution rate is required for additional organisms. The inclusion of hog*

operation mandates the higher rate.)

**(Note to Reviewer:** The following statement will be used with all of the use direction in this section except terrarium and small animal cage, reptile tank and fogging directions.)

Prior to use (of (this product) (Product Name)), cover or remove all food and packaging material before disinfection and remove all animals and feeds from [(premises) (areas to be treated)], animal transportation vehicles (trucks, cars), and enclosures (coops, crates, kennels, stables). Remove all litter, droppings and manure from floors, walls and surfaces of barns, pens, stalls, chutes and other surfaces of facilities and fixtures occupied or traversed by poultry or other animals. Empty all troughs, racks, and other feeding and watering appliances, Thoroughly clean surfaces with soap or detergent and rinse with water.

**ANIMAL PREMISE VIRUCIDAL PERFORMANCE:** At a ½-ounce (of (this product) (Product Name)) per (one) (1) gallon of water use level (847 ppm active) (1:256) (or equivalent dilution), [(this product) (Product Name)] was evaluated in the presence of 5% serum and p to 250-ppm hard water with a 10-minute contact time and found to be effective against the following viruses on hard, non-porous (inanimate) (environmental) surfaces:

|  |   |
|--|---|
| <i>Avian Influenza A Virus (ATCC VR-2072)</i>                | <i>Newcastle Disease Virus (ATCC VR-108)</i>      |
| <i>Avian Adenovirus (ATCC VR-280)</i>                        | <i>Infectious Bursal Disease Virus</i>            |
| <i>Avian Reovirus (ATCC VR2449)</i>                          | <i>Infectious Bronchitis Virus Beaudette IB42</i> |
| <i>Infectious Laryngotracheitis Virus LT-IVAX</i>            | <i>Pseudorabies Virus</i>                         |
| <i>Porcine Rotavirus</i>                                     | <i>Vesicular Stomatitis Virus</i>                 |
| <i>Swine Influenza A Virus</i>                               | <i>Transmissible Gastroenteritis Virus</i>        |
| <i>Porcine Respiratory &amp; Reproductive Syndrome Virus</i> |   |

**VETERINARY CLINICS/ ANIMAL LIFE SCIENCE LABORATORY/ ANIMAL CARE FACILITIES/ ANIMAL RESEARCH CENTERS/ ANIMAL LABORATORY/ ANIMAL QUARANTINE AREAS/ ANIMAL BREEDING FACILITIES/ ZOOS/ PET SHOP/ ANIMAL HUSBANDRY/ KENNELS/ BREEDING AND GROOMING ESTABLISHMENTS/ TACK SHOPS DISINFECTION DIRECTIONS:** REMOVE ALL ANIMALS PRIOR TO TREATMENT.

For cleaning and disinfecting (the following) hard, non-porous (inanimate) (environmental) surfaces ((in the following (premises) (areas to be treated)) ((such as) equipment, utensils, instruments, cages, kennels, stables, stalls and catteries, and other hard, non-porous (inanimate) (environmental) surfaces)), [(saturate with) (use) (apply)] a use solution of a ½ ounce (of (this product) (Product Name)) per (one) (1) gallon of water (or equivalent dilution ) (847 ppm active) as to wet thoroughly. Apply by cloth, mop, brush, sponge, auto scrubber or foam gun (device) or mechanical spray device ((hand pump) coarse pump or trigger spray device) or by immersion. For spray applications, spray 6-8 inches from surface. Do not breathe spray. Rub with brush, cloth or sponge. Allow surfaces to remain wet for a period of 10 minutes. Immerse all halters and other types of hard, non-porous (inanimate) environmental equipment used in handling and restraining animals as well as forks, shovels and scrapers used in removing litter and manure in the use solution. Ventilate buildings and other closes spaces. Do not house animals or employ equipment until treatment has been absorbed, set or dried. Thoroughly scrub all treated feed racks, automatic feeder, waterers, and other treated equipment which dispenses food or water with soap or detergent, and rinse with potable water before reuse. Change cloth, sponge or towels frequently to avoid redeposition of soil. [(A fresh solution must be prepared) (Prepare a fresh solution) at least daily or when use solution becomes visibly [(dilute) (soiled) (dirty)].

**RENDERING PLANT/ DRESSING PLANT DISINFECTANT/FUNGICIDE/VIRUCIDE DIRECTIONS (DRESSING PLANT AND RENDING PLANT DISINFECTANT/ FUNGICIDE/ VIRUCIDE DIRECTIONS):** [(Saturate with) (Use) (Apply)] disinfecting or virucidal solution of ½ ounce (of (this product) (Product Name)) per (one) (1) gallon of water (or equivalent use dilution) (847 ppm active) to hard, non-porous (inanimate) (environmental) surfaces (such as walls, floors, loading platforms, and other hard, non-porous (inanimate) (environmental) surfaces) in poultry and animal dressing plants so as to wet thoroughly. Apply by cloth, mop, brush, sponge, auto scrubber or foam gun (device) or mechanical spray device ((hand pump) coarse pump or trigger spray device) or by immersion. For spray applications, spray 6- 8 inches from surface.

Do not breathe spray. Rub with brush, cloth, or sponge. Surfaces must remain wet for 10 minutes and thoroughly rinse all wetted and cleaned surfaces with potable water before operations are resumed. Change cloth, sponge or towels frequently to avoid redeposition of soil. [(A fresh solution must be prepared) (Prepare a fresh solution) at least daily or when use solution becomes visibly [(dilute) (soiled) (dirty)].

**TERRARIUM AND SMALL ANIMAL CAGE AND CAGE FURNITURE DISINFECTION:**

Animals frequently defecate on hot rocks and other hard, non-porous (inanimate) (environmental) cage furniture items inside your terrarium. This can result in high bacteria and ammonia levels that can lead to possible infection/disease in your animals. When used regularly [(this product) (Product Name)] can eliminate these high bacteria / ammonia level in your cage and on your cage furniture items. *(Use on rocks not allowed for use in California.)*

1. Remove all animals.
2. Thoroughly clean all surfaces and objects (hot rocks, caves, cage furniture, feeding and watering dishes, and appliances) including the substrate in the terrarium or cage with soap or detergent and rinse with water.
3. Saturate all hard, non-porous (inanimate) (environmental) surfaces (such as floors, walls, cages and other washable hard, non-porous (inanimate) (environmental) surfaces) with the disinfecting and virucidal solutions of ½ ounce (of (this product) (Product Name)) per (one) (1) gallon of water (or equivalent use dilution) (847 ppm active) so as to wet thoroughly,
4. Apply by cloth, mop, brush, sponge, auto scrubber or mechanical spray device ((hand pump) coarse pump or trigger spray device) or by immersion. For spray applications, spray 6-8 inches from surface. Do not breathe spray. Rub with brush, cloth, or sponge. For smaller surfaces, use a trigger spray bottle to spray all surfaces with solution.
5. Allow surfaces to remain wet for a period of 10 minutes.
6. Saturate gravel as above and let stand for 10 minutes. Place in bucket or clean water and swirl for 15-30 seconds. Thoroughly air dry before returning to terrarium.
7. Thoroughly scrub all treated surfaces (except gravel) with soap or detergent and rinse with potable water before reuse.
8. Do not return animals to the habitat until it is dry and ventilated.
9. Clean terrarium at least once weekly or more as needed. Change cloth, sponge, or towels frequently to avoid redeposition of soil.
10. [(A fresh solution must be prepared) (Prepare a fresh solution) at least daily or when use solution becomes visibly [(dilute) (soiled) (dirty)].

**Note:** Do not apply (this product) (Product Name) directly onto the small animal. If [(this product) (Product Name)] comes into contact with the small animal's skin, then immediately wash the material off of the animal with lukewarm water. If the small animal ingests [(this product) (Product Name)], contact your veterinarian immediately. Substrates for desert terrariums (i.e. Gravel) must be completely dry before returning to terrarium to avoid high humidity levels. Always replace substrate if a foul odor persists.

**REPTILE TANK CLEANING AND DISINFECTION DIRECTIONS:** Remove all reptiles from the [(enclosure) (tank)] prior to cleaning and disinfecting. Remove all litter or droppings from surfaces. Empty all equipment used for feeding or watering reptiles. Thoroughly clean all surfaces with soap or detergent and rinse with water. [(Saturate with) (Use) (Apply)] disinfecting and virucidal solution of ½ oz. (of (this product) (Product Name)) per (one) (1) gallon of water (or equivalent dilution) (847 ppm active) to hard non-porous (inanimate) (environmental) surfaces (of the (enclosure) (tank)). Apply by cloth, mop, brush, sponge, auto scrubber or mechanical spray device ((hand pump) coarse pump or trigger spray device) or by immersion until thoroughly wet. For spray applications, spray 6-8 inches from surface. Do not breathe spray. Allow surfaces to remain wet for 10 minutes. [(Wipe dry (with a paper towel)) (Wipe with clean cloth, sponge or paper towel) (Wipe excess liquid (with a paper towel))]. Rinse all surfaces that come in contact with food with potable water before reuse. Allow the [(enclosure) (tank)] to ventilate for a minimum of 10-15 minutes before replacing the reptiles. Change cloth, sponge or towels frequently to avoid redeposition of soil. [(A fresh solution must be prepared) (Prepare a fresh solution) at least daily or when use solution becomes visibly [(dilute) (soiled) (dirty)].

**Note:** Do not apply (this product) (Product Name) directly onto the reptile. If [(this product) (Product Name)] comes into contact with the reptile's skin, then immediately wash the material

off of the animal with lukewarm water. If the reptile ingests [(this product) (Product Name)], contact your veterinarian immediately.

### FARM PREMISE DISINFECTION DIRECTIONS

**FARM PREMISE USE (Equine, Poultry/Turkey, Dairy and Hog Farms):** REMOVE ALL ANIMALS PRIOR TO TREATMENT. DO not use in milking stalls, milking parlors or milk houses. [(Saturate with) (Use) (Apply)] ½ ounce (of (this product) (Product Name)) per (one) (1) gallon of water (or equivalent dilution) to hard non-porous (inanimate) (environmental) surfaces. Allow (hard non-porous (inanimate) (environmental)) surfaces to remain wet for a period of 10 minutes. Apply by cloth, mop, brush, sponge, auto scrubber or foam gun (device) or mechanical spray device ((hand pump) coarse pump or trigger spray device) or by immersion. For spray applications, spray 6-8 inches from surface. Do not breathe spray. Immerse all halters and other types of equipment used in handling and restraining animals as well as forks, shovels and scrapers used in removing litter and manure. Ventilate buildings, cars, trucks, boats and other closed spaces. Do not house livestock or employ equipment until treatment has been absorbed, set or dried. Thoroughly scrub all treated feed racks, mangers, troughs, automatic feeders, fountains and waterers and other treated equipment with soap or detergent and rinse with potable water before reuse. Change cloth, sponge or towels frequently to avoid redeposition of soil. [(A fresh solution must be prepared) (Prepare a fresh solution) at least daily or when use solution becomes visibly [(dilute) (soiled) (dirty)].

(OR)

#### FOR USE IN EQUINE, DAIRY and HOG FARMS:

1. [(Saturate with) (Use) (Apply)] a ½ oz. (of (this product) (Product Name)) per (one) (1) gallon of water (847 ppm active) (or equivalent dilution) use solution to all hard non-porous (inanimate) (environmental) surfaces.
2. Apply by cloth, mop, brush, sponge, auto scrubber or foam gun (device) or mechanical spray device ((hand pump) coarse pump or trigger spray device) or by immersion. For spray applications, spray 6-8 inches from surface. Do not breathe spray.
3. Immerse all halters and other types of equipment used in handling and restraining animals as well as forks, shovels and scrapers used in removing litter and manure.
4. Allow all surfaces to remain wet for a period of 10 minutes.
5. Ventilate buildings, cars, trucks, boats and other closed spaces. Do not house livestock or employ equipment until treatment has been absorbed, set or dried.
6. Thoroughly scrub all treated feed racks, mangers, troughs, automatic feeders, fountains and waterers and other treated equipment with soap or detergent and rinse with potable water before reuse.
7. Change cloth, sponge or towels frequently to avoid redeposition of soil.
8. [(A fresh solution must be prepared) (Prepare a fresh solution) at least daily or when use solution becomes visibly [(dilute) (soiled) (dirty)].

**VEAL, CALVING, HOG, CATTLE AND HORSE OPERATIONS:** Between depopulations of facilities, cleaning and disinfection of pens, hutches, aisles and other environmental surfaces can be required. Flush soils from these areas. [(Saturate with) (Use) (Apply)] the disinfecting and virucidal solution of ½ oz. (of (this product) (Product Name)) per (one) (1) gallon of water to hard non-porous (inanimate) (environmental) surfaces and allow to remain wet for a period of 10 minutes. Apply by cloth, mop, brush, sponge, auto scrubber or foam gun (device) or mechanical spray device ((hand pump) coarse pump or trigger spray device) or by immersion. For spray applications, spray 6-8 inches from surface. Do not breathe spray. Immerse all halters, ropes and other types of hard non-porous (inanimate) (environmental) equipment used in handling and restraining animals as well as forks, shovels and scarpers used in removing litter and manure. Ventilate buildings, cars, trucks, boats and other closed spaces. Do not house livestock or employ equipment until treatment has been absorbed, set or dried. Thoroughly scrub all treated feed racks, mangers, troughs, automatic feeders, fountains and waterers and other treated equipment with soap or detergent and rinse with potable water before reuse. Change cloth, sponge or towels frequently to avoid redeposition of soil. [(A fresh solution must be prepared) (Prepare a fresh solution) at least daily or when use solution becomes visibly [(dilute) (soiled) (dirty)].

**FOR USE IN THE TREATMENT OF ANIMAL HOUSING FACILITIES:**

1. [(Apply) (Use) (Saturate with)] ½ ounce (of (this product) (Product Name)) per (one) (1) gallon of water (or equivalent dilution) (847 ppm active) to all hard non-porous (inanimate) (environmental) surfaces (such as floors, walls, cages and other washable hard, non-porous (inanimate) (environmental) surfaces).
2. Apply by cloth, mop, brush, sponge, auto scrubber or foam gun (device) or mechanical spray device ((hand pump) coarse pump or trigger spray device) or by immersion. For spray applications, spray 6-8 inches from surface. Do not breathe spray. For smaller surfaces, use a coarse trigger spray bottles to spray all surfaces with solution until wet.
3. Immerse all halters and other types of hard non-porous (inanimate) (environmental) equipment used in handling and restraining animals as well as forks, shovels, scarpers used in removing litter and manure.
4. All treated surfaces remain wet for 10 minutes.
5. Ventilate buildings, cars, trucks, boats and other closed spaces. Do not house [(animals) (livestock)] or employ equipment until [(treatment has been absorbed, set and dried) (product has dried)].
6. Thoroughly scrub all treated feed racks, mangers, troughs, automatic feeders, fountains, waterers and other treated equipment with soap or detergent and rinse with potable water before reuse.
7. Change cloth, sponge or towels frequently to avoid redeposition of soil.
8. [(A fresh solution must be prepared) (Prepare a fresh solution) at least daily or when use solution becomes visibly [(dilute) (soiled) (dirty)].

**POULTRY (AND SWINE) PREMISE SANITATION**

**Site Preparation:** REMOVE ALL ANIMALS AND FEED FROM PREMISE, VEHICLES AND ENCLOSURES BEFORE ALL APPLICATIONS/USES FOR ALL LIVESTOCK PREMISES. The first step in any on-going sanitation program be the removal of gross contamination and debris. This may be accomplished using a shovel, broom, or vacuum depending on the area to be disinfected. The efficacy of even the most efficient germicidal cleaner is reduced in the presence of heavy organic matter. Once the heavy debris is eliminated thoroughly clean all surface with soap or detergent and rinse with water.

**APPLICATIONS AND USE DILUTION POULTRY (AND SWINE) PREMISE (DISINFECTION/FUNGICIDE/VIRUCIDE OF POULTRY/TURKEY EQUIPMENT, SINE QUARTERS, LIVESTOCK FARMS, EQUINE WATERS, ANIMAL QUARTERS AND KENNEL DIRECTIONS):** [(Use) (Saturate with) (Apply)] ½ ounce (of (this product) (Product Name)) per (one) (1) gallon of water (1:256) (847 ppm active) (or equivalent dilution) to all hard non-porous (inanimate) (environmental) surfaces. Apply by cloth, mop, brush, sponge, auto scrubber or mechanical spray device ((hand pump) coarse pump or trigger spray device) or by immersion. For spray applications, spray 6-8 inches from surface. Do not breathe spray. Allow surfaces to remain wet for 10 minutes. Immerse all halters and other types of hard. Non-porous (inanimate) (environmental) equipment used in handling and restraining animals, as well as forks, shovels and scarpers used in removing litter and manure. After application, ventilate buildings, coops and other closed spaces. Do not house poultry or other animals or employ equipment until treatment has been absorbed, set or dried. Thoroughly scrub (a treated equipment [OR] feed racks, troughs, automatic feeders, fountains and waterer and other treated equipment) which may contact food or water with soap or detergent, and rise with potable water before reuse. Change cloth, sponge or towels frequently to avoid redeposition of soil. [(A fresh solution must be prepared) (Prepare a fresh solution) at least daily or when use solution becomes visibly [(dilute) (soiled) (dirty)].

**HATCHERIES:** Use ½ ounce (of (this product) (Product Name)) per (one) (1) gallon of water use solution (or equivalent dilution). Apply to hard non-porous (inanimate) (environmental) surfaces such as hatches, setters, (plastic) trays, (plastic) racks, egg flats, walls, floors, ceilings, chickboxes, egg cases, treat containers, carts, sexing tables, delivery trucks and other hard non-porous (inanimate) (environmental) surfaces. Apply by cloth, mop, brush, sponge, auto scrubber or foam gun (device) or mechanical spray device ((hand pump) coarse pump or trigger spray device) or by immersion. For spray applications, spray 6-8 inches from surface.



Do not breathe spray. Leave all treated surfaces [(exposed to solution) (wet)] for 10 minutes or more. Rinse treated surfaces with potable water before reuse. Allow surface to air dry. Change cloth, sponge or towels frequently to avoid redeposition of soil. [(A fresh solution must be prepared) (Prepare a fresh solution) at least daily or when use solution becomes visibly [(dilute) (soiled) (dirty)].

**VEHICLES:** Clean all vehicle hard non-porous (inanimate) (environmental) surfaces including mats, crates, cabs, and wheels with high-pressure water and [(this product) (Product Name)]. Use ½ ounce (of (this product) (Product Name)) per (one) (1) gallon of water (or equivalent use dilution). Apply by cloth, mop, brush, sponge, auto scrubber or foam gun (device) or mechanical spray device ((hand pump) coarse pump or trigger spray device) or by immersion. For spray applications, spray 6-8 inches from surface. Do not breathe spray. Leave all treated surfaces exposed to solution for 10 minutes or more and allow to air dry. Change cloth, sponge or towels frequently to avoid redeposition of soil. [(A fresh solution must be prepared) (Prepare a fresh solution) at least daily or when use solution becomes visibly [(dilute) (soiled) (dirty)].

**FOR USE IN LIVESTOCK, POULTRY AND TURKEY HOUSES:**

1. REMOVE LIVESTOCK PRIOR TO APPLICATIONS.
2. [(Saturate with) (Use) (Apply)] ½ ounce (of (this product) (Product Name)) per (one) (1) gallon of water (or equivalent dilution) (847 ppm active) to all hard non-porous (inanimate) (environmental) surfaces and allow surface to remain wet for a period of 10 minutes.
3. Apply by cloth, mop, brush, sponge, auto scrubber or foam gun (device) or mechanical spray device ((hand pump) coarse pump or trigger spray device) or by immersion. For spray applications, spray 6-8 inches from surface. Do not breathe spray.
4. Immerse all halters and other types of hard non-porous (inanimate) (environmental) equipment used in handling and restraining animals as well as forks, shovels, scarpers used in removing litter and manure.
5. Ventilate buildings, cars, trucks, boats and other closed spaces. Do not house livestock or employ equipment until treatment has been absorbed, set and dried.
6. Thoroughly scrub all treated feed racks, mangers, troughs, automatic feeders, fountains, waterers and other treated equipment with soap or detergent and rinse with potable water before reuse.
7. Change cloth, sponge or towels frequently to avoid redeposition of soil.
8. [(A fresh solution must be prepared) (Prepare a fresh solution) at least daily or when use solution becomes visibly [(dilute) (soiled) (dirty)].

**DISINFECTANT DIRECTIONS FOR CHICK VANS, EGG TRUCKS, HATCHERY and FARM VEHICLES:** Clean all vehicle surfaces including mats, crates, cabs, and wheels and other hard non-porous (inanimate) (environmental) surfaces with high-pressure water and [(this product) (Product Name)]. [(Saturate with) (Use) (Apply)] ½ ounce (of (this product) (Product Name)) per (one) (1) gallon of water (or equivalent use dilution) (847 ppm active) to treat all vehicle's hard non-porous (inanimate) (environmental) surfaces. Leave all treated surfaces [(exposed to disinfectant solution) (wet)] for 10 minutes or more. Apply by cloth, mop, brush, sponge, auto scrubber or foam gun (device) or mechanical spray device ((hand pump) coarse pump or trigger spray device) or by immersion. For spray applications, spray 6-8 inches from surface. Do not breathe spray. Leave all treated surfaces exposed to solution for 10 minutes or more and allow to air dry. Change cloth, sponge or towels frequently to avoid redeposition of soil. [(A fresh solution must be prepared) (Prepare a fresh solution) at least daily or when use solution becomes visibly [(dilute) (soiled) (dirty)].

**DISINFECTANT/VIRUCIDAL DIRECTIONS TO TREAT HARD NON-POROUS, NON-FOOD CONTACT SURFACES OF AUTOMATIC TRAY, RACK, AND BUGGY WASHERS:** Mix a solution containing ½ oz. (of (this product) (Product Name)) per (one) (1) gallon of water (1:256) (or equivalent use dilution) (847 ppm active). Treat all hard, non-porous, non-food contact (inanimate) (environmental) surfaces of automated trays, racks, buggy washers with solution for 10 minutes. Apply by cloth, mop, brush, sponge, auto scrubber or foam gun (device) or mechanical spray device ((hand pump) coarse pump or trigger spray device) or by immersion. For spray applications, spray 6-8 inches from surface. Do not breathe spray. Thoroughly clean

all surfaces with soap or detergent and rinse with water before reuse. Change cloth, sponge or towels frequently to avoid redeposition of soil. [(A fresh solution must be prepared) (Prepare a fresh solution) at least daily or when use solution becomes visibly [(dilute) (soiled) (dirty)].

**DISINFECTANT/VIRUCIDAL DIRECTIONS TO TREAT HARD NON-POROUS, NON-FOOD CONTACT SURFACES IN EGG RECEIVING AND EGG HOLDING AREAS:** Mix a solution containing ½ oz. (of (this product) (Product Name)) per (one) (1) gallon of water (1:256) (or equivalent use dilution) (847 ppm active). [(Saturate with) (Use) (Apply)] the solution to hard non-porous (inanimate) (environmental) surfaces and allow to remain wet for a period of 10 minutes. Apply by sponge, cloth, mop, brush, auto scrubber or foam gun (device) or mechanical spray device ((hand pump) coarse pump or trigger spray device) or by immersion. For spray applications, spray 6-8 inches from surface. Do not breathe spray. Thoroughly clean all surfaces with soap or detergent and rinse with water before reuse. Change cloth, sponge or towels frequently to avoid redeposition of soil. [(A fresh solution must be prepared) (Prepare a fresh solution) at least daily or when use solution becomes visibly [(dilute) (soiled) (dirty)].

**MEAT PACKING PLANTS:** [(Use) (Apply)] [(this product) (Product Name)] to disinfect hard, non-porous (inanimate) (environmental) surfaces associated with the following sites: livestock, vehicles and holding pens, perceiving areas and delivery chutes, slaughter areas and conveyors, hand, rub and guide rails, post knock cabinets, stands and flooring surfaces, chains and moving process lines, surfaces of equipment for hide operations consisting of brine curing, ,hide transfer in surfaces, chutes, conveyors, tallow and animal feed production hard, non-porous (inanimate) (environmental) surfaces, processed products and offal equipment surfaces, fabrication and processing areas covering cold storage areas, all stainless steel cut out and prep tables, counter tops, conveyors, chains, tables, floors, walls and all stainless surfaces. For application, saturate all surfaces with solution and scrub to loosen all soils. Use ½ ounce (of (this product) (Product Name)) per (one) (1) gallon of water (847 ppm active) (or equivalent use dilution). Apply by cloth, mop, brush, sponge, auto scrubber or foam gun (device) or mechanical spray device ((hand pump) coarse pump or trigger spray device) or by immersion. For spray applications, spray 6-8 inches from surface. Do not breathe spray. Rub with brush, cloth, or sponge Surfaces must remain wet for 10 minutes then thoroughly rinse with potable water before operations are resumed. All treated equipment that will contact animal fed or food surfaces must be thoroughly scrubbed with soap or detergent then rinsed with potable water before reuse. Change cloth, sponge or towels frequently to avoid redeposition of soil. [(A fresh solution must be prepared) (Prepare a fresh solution) at least daily or when use solution becomes visibly [(dilute) (soiled) (dirty)].

**HIDE/LEATHER PROCESSING PLANTS:** To use as a disinfectant/fungicide on hard, non-porous (inanimate) (environmental) surfaces, add ½ ounce (of (this product) (Product Name)) per (one) (1) gallon of water (847 ppm active) (or equivalent use dilution). The product can be used on hide storage bins, holding tanks, chill tanks, serpentine tanks and chains, machine and tannery equipment surfaces, conveyors and trolleys, hide press, grading and storage areas and scales, etc. Apply use solution with a brush, cloth, mop, sponge, auto scrubber or foam gun (device) or mechanical spray device ((hand pump) coarse pump or trigger spray device) or by immersion to thoroughly wet surfaces. For spray applications, spray 6-8 inches from surface. Do not breathe spray. Treated surfaces must remain wet for 10 minutes. [(Wipe up excess liquid (with a paper towel)) (Allow to air dry)]. Change cloth, sponge or towels frequently to avoid redeposition of soil. [(A fresh solution must be prepared) (Prepare a fresh solution) at least daily or when use solution becomes visibly [(dilute) (soiled) (dirty)].

**SPECIAL INSTRUCTIONS FOR INACTIVAING AVIAN INFLUENZA A (H3N2) VIRUS:** [(Saturate with) (Use) (Apply)] the disinfecting solution of ½ ounce (of (this product) (Product Name)) per gallon of water (847 ppm active) (or equivalent use dilution) to all hard non-porous (inanimate) (environmental) surfaces and allow to remain wet for a period of 10 minutes. Apply by cloth, mop, brush, sponge, auto scrubber or foam gun (device) or mechanical spray device ((hand pump) coarse pump or trigger spray device) or by immersion. For spray applications, spray 6-8 inches from surface. Do not breathe spray. Immerse all halters and other types of hard, non-porous (inanimate) environmental) equipment used in handling and restraining animals as well as forks, shovels and scrapers used in removing litter and manure. Ventilate

buildings, coops and other closes spaces. Do not house poultry or employ equipment until treatment has been absorbed, set or dried. Thoroughly scrub treated feed racks, troughs, automatic feeder, fountains, waterers, and other treated equipment with soap or detergent, and rinse with potable water before reuse. Change cloth, sponge or towels frequently to avoid redeposition of soil. [(A fresh solution must be prepared) (Prepare a fresh solution) at least daily or when use solution becomes visibly [(dilute) (soiled) (dirty)].

#### **SANITIZER DIRECTIONS FOR NON-FOOD CONTACT SURFACES IN ANIMAL PREMISES**

**TO SANITIZE HOOF TRIMMING EQUIPMENT:** Prior to application, pre-clean hoof trimming equipment before and after use on each animal with detergent and warm water or compatible cleaner to remove soil using a pre-scrape, pre-flush, or when necessary, pre-soak followed by a potable water rinse. To sanitize, prepare a ¼ oz. (of (this product) (Product Name)) per gallon of water (425 ppm active) (or equivalent use dilution). Apply to pre-cleaned hard non-porous (inanimate) (environmental) surfaces using a brush, cloth, mop, sponge, auto scrubber or foam gun (device) or mechanical spray device ((hand pump) coarse pump or trigger spray device) or by immersion to thoroughly wet surfaces. For spray applications, spray 6-8 inches from surface. Do not breathe spray. Allow surfaces to remain wet for at least 3 minutes followed by [(adequate draining) (air drying)]. Change cloth, sponge or towels frequently to avoid redeposition of soil. [(A fresh solution must be prepared) (Prepare a fresh solution) at least daily or when use solution becomes visibly [(dilute) (soiled) (dirty)].

**TREATMENT OF HATCHERY ROOMS USING FOGGING DEVICES: *All surfaces must be cleaned and disinfected in accordance with label directions prior to fogging.*** Remove all animals and feed from [(premise) (areas to be treated)], vehicles and enclosures. Remove all litter and manure from floors, walls and surfaces of the room to be treated. Empty all troughs, racks and other feeding and watering appliances. Thoroughly clean all surfaces with soap or detergent and rinse with water. Close room off so fog is confined to room to be treated. Mix 1¼ gallon (of (this product) (Product Name)) to 5 gallons of water (or equivalent use dilution). Wear a dust mist respirator when mixing the use solution and pouring it into the fogging apparatus. Insert the nozzle of the fogger through a suitable opening into the room. With the setting in maximum output, fog for one minute for each 4000 cubic feet of space in the room. Vacate the room of all personnel during and after fogging for a minimum of 2 hours of fogging and of 4 air exchanges (ACH) per hour in the facility. When fogging is completed ventilate buildings and other closed spaces. Do not house livestock or employ equipment until treatment has been absorbed or dried. Thoroughly clean all treated surfaces with soap or detergent and rinse with water.

**TREATMENT OF INCUBATORS AND HATCHERS USING FOGGING DEVICES: *All surfaces must be cleaned and disinfected in accordance with label directions prior to fogging.*** Only for treatment of setters and hatchers after poultry/chicks/eggs have been removed. Not for treatment of hatchers which contain chicks/eggs. Mix 6 ounces (of (this product) (Product Name)) to 122 ounces of water (or equivalent use dilution). Wear a dust mist respirator when mixing the use solution and pouring it into the fogging apparatus. Fog 3-8 ounces of this into setters and hatchers immediately after transfer. Repeat daily in setters and every 12 hours in hatchers. Discontinue hatcher treatments at least 24 hours prior to pulling the hatchers. Do not allow people to contact or breather this fog. It is acceptable to fog setters and hatchers with a 1.1-ounce (of (this product) (Product Name)) per (one) (1) gallon of water solution (or equivalent use dilution) on an hourly or once every two hours. When fogging is complete, ventilate buildings, and other closed spaces. Do not house livestock or employ equipment until treatment has been absorbed or dried. Thoroughly scrub all treated feed racks, mangers, troughs, automatic feeders, fountains and waterers, and other treated equipment with soap or detergent and rinse with potable water before reuse.

*(Note to Reviewer: The following statements must be used with either of the previous two (2) fogging directions for use).*

**Note:** The fog generated is irritating to the eyes, skin and mucous membranes. Under no circumstances must a room or building be entered by anyone within two hours of the actual fogging and a minimum of 4 air exchanges (4 ACH) per hour in the facility If the building must be entered, then the individuals entering the

building must wear a self-contained respirator approved by NIOSH/MSHA, goggles, long sleeves and long pants.

## BARBER / SALON

**DISINFECTANT/FUNGICIDE FOR BARBER/SALON TOOLS DIRECTIONS:** Immerse pre-cleaned hard (non-porous (inanimate) (environmental) barber/salon tools such as combs, brushes, plastic rollers, razors, clipper and trimmer blades, tweezers, manicure/pedicure tools and scissors in a ¼ ounce (of (this product) (Product Name)) per (one) (1) gallon of water (1:256) (or equivalent use dilution) (425 ppm active). Completely immerse instruments and tools for at least 10 minutes. Rinse thoroughly and dry before use. [(A fresh solution must be prepared) (Prepare a fresh solution) at least daily or when (immersion (tank) (bowl) (sink)) use solution becomes cloudy or soiled.

### **FOR USE TO CLEAN AND DISINFECT BARBER AND BEAUTY/MANICURE INSTRUMENTS AND TOOLS:**

1. Pre-clean heavily soiled items.
2. Completely immerse pre-cleaned combs, scissors, plastic rollers, clipper blades, razors, manicure implements and other hard non-porous (inanimate) (environmental) instruments in the use solution of ¼ ounce (of (this product) (Product Name)) per (one) (1) gallon of water (or equivalent use dilution) (425 ppm active) so that surfaces remain wet for ten (10) minutes.
3. Rinse surfaces thoroughly and let air dry before reuse.
4. [(A fresh solution must be prepared) (Prepare a fresh solution) at least daily or when (immersion (tank) (bowl) (sink)) use solution becomes visibly [(diluted) (soiled) (dirty)].

**DISINFECTING GROOMING CLIPPERS:** Remove hair, dandruff and dust particles prior to disinfecting the blades. Turn the clipper off occasionally during use and spray between the teeth of blades a use solution of ¼ ounce ((of (this product) (Product Name)) per (one) (1) gallon of water (or equivalent use dilution) (425 ppm active). Allow hard non-porous (inanimate) (environmental) surface to remain wet for at least 10 minutes. Rinse surfaces thoroughly. Then wipe dry with a clean soft cloth. [(A fresh solution must be prepared) (Prepare a fresh solution) at least daily or when (immersion (tank) (bowl) (sink)) use solution becomes visibly [(diluted) (soiled) (dirty)].

**CLEANING HAIR CLIPPERS AND ELECTRIC SHEARS:** When clipper/shear is running, hold in the downward position and spray a ¼ ounce ((of (this product) (Product Name)) per (one) (1) gallon of water (or equivalent use dilution) (425 ppm active) directly onto the blades two or three times to thoroughly wet the blades. Do not spray on the clipper case or drip into clipper housing. Turn off clipper/shear. Allow hard non-porous (inanimate) (environmental) surface to remain wet for at least 10 minutes. Rinse surfaces thoroughly. Then wipe dry with a clean soft cloth. Lubricate as per clipper/shear manufacturer's instructions. [(A fresh solution must be prepared) (Prepare a fresh solution) at least daily or when (immersion (tank) (bowl) (sink)) use solution becomes visibly [(diluted) (soiled) (dirty)].

**CLEANING BARBER/SALON SHEARS AND OTHER IMPLEMENTS:** Spray shear/implement until thoroughly wet. Wipe away visible debris using a soft bristle brush or cloth. Turn off clipper/shear. Immerse pre-cleaned shear/implement into a container of ¼ ounce (of (this product) (Product Name)) per (one) (1) gallon of water (or equivalent use dilution) (425 ppm active) for at least 10 minutes. Rinse surfaces thoroughly. Remove shear/implement and wipe dry. [(A fresh solution must be prepared) (Prepare a fresh solution) at least daily or when (immersion (tank) (bowl) (sink)) use solution becomes visibly [(diluted) (soiled) (dirty)].

*(Note to Reviewer: The following statement will be used with all above Barber/Salon Directions for Use).*

**Note:** Plastics instruments can remain immersed until ready to use. Stainless Steel shears and other metal instruments must be removed after 10 minutes, rinsed, dried and kept in a clean, non-contaminated

receptacle. Prolonged soaking will cause damage to metal instruments.

**DISINFECTION OF HARD, NON-POROUS (INANIMATE) (ENVIRONMENTAL) SURFACES IN FOOTBATHS:** To remove body oils, dead tissues, soil and all other buildups or organic matter on (hard non-porous (inanimate) (environmental)) footbath surfaces after using the unit, drain the water and thoroughly clean all (hard non-porous (inanimate) (environmental)) surfaces with soap or detergent, then rinse with water. [(Saturate with) (Use) (Apply)] a use solution of ¼ ounce (of (this product) (Product Name)) per (one) (1) gallon of water (or equivalent use dilution) (425 ppm active) to hard non-porous (inanimate) (environmental) surfaces with a brush, cloth, mop, sponge, auto scrubber or mechanical spray device ((hand pump) coarse pump or trigger spray device). Brush or swab thoroughly and allow solution to stand for 10 minutes. For spray applications, spray 6-8 inches from surface. Do not breathe spray. After the unit has been thoroughly disinfected, rinse all [(cleaned) (treated)] surfaces with fresh water. Do not use equipment until treatment has been absorbed, set or dried. Change cloth, sponge or towels frequently to avoid redeposition of soil. [(A fresh solution must be prepared) (Prepare a fresh solution) at least daily or when use solution becomes visibly [(diluted) (soiled) (dirty)].

**DISINFECTION/FUNGICIDE OF HARD, NON-POROUS (INANIMATE) (ENVIRONMENTAL) SURFACES IN FOOTBATHS:** To remove body oils, dead tissues, soil and all other buildups or organic matter on (hard non-porous (inanimate) (environmental)) footbath surfaces after using the unit, drain the water and thoroughly clean all (hard non-porous (inanimate) (environmental)) surfaces with soap or detergent, then rinse with water. [(Saturate with) (Use) (Apply)] a use solution of ½ ounce (of (this product) (Product Name)) per (one) (1) gallon of water (or equivalent use dilution) (847 ppm active) to hard non-porous (inanimate) (environmental) surfaces with a brush, cloth, mop, sponge, auto scrubber or mechanical spray device ((hand pump) coarse pump or trigger spray device). Brush or swab thoroughly and allow solution to stand for 10 minutes. For spray applications, spray 6-8 inches from surface. Do not breathe spray. After the unit has been thoroughly disinfected, rinse all [(cleaned) (treated)] surfaces with fresh water. Do not use equipment until treatment has been absorbed, set or dried. Change cloth, sponge or towels frequently to avoid redeposition of soil. [(A fresh solution must be prepared) (Prepare a fresh solution) at least daily or when use solution becomes visibly [(diluted) (soiled) (dirty)].

#### **SANITIZER DIRECTIONS FOR NON-FOOD CONTACT SURFACES IN BARBER/SALON FACILITIES**

**SALON/BARBER INSTRUMENTS AND TOOLS SANITIZER DIRECTIONS** (*Not applicable in California*): Pre-clean soiled instruments and tools. Completely immerse water safe hard non-porous (inanimate) (environmental) instruments and tools in a use solution of a ¼ ounce (of (this product) (Product Name)) per (one) (1) gallon of water (or equivalent use dilution) (425 ppm active) of water at least two minutes. Rinse thoroughly and dry before use. [(A fresh solution must be prepared) (Prepare a fresh solution) at least daily or when (immersion (tank) (bowl) (sink)) use solution becomes visibly [(diluted) (soiled) (dirty)].

**Note:** Plastics instruments can remain immersed until ready to use. Stainless Steel shears and other metal instruments must be removed after 10 minutes, rinsed, dried and kept in a clean, non-contaminated receptacle. Prolonged soaking will cause damage to metal instruments.

### **RESTROOM/BATHROOM**

#### **NON-ACID TOILET BOWL (AND URINAL) (AND BATHROOM) DISINFECTION/CLEANER DIRECTIONS**

##### **CONCENTRATE INSTRUCTIONS**

**FROM CONCENTRATE:** Remove gross filth prior to disinfection. Add ¼ ounce (of (this product) (Product Name)) (425 ppm active) (or equivalent use dilution) directly into the toilet bowl and mix. Brush thoroughly over exposed surfaces and under the rim with a brush, cloth, mop, sponge, auto scrubber or mechanical spray device ((hand pump) coarse pump or trigger spray device). Repeat and allow to stand for 10 minutes and flush. Change cloth, sponge or towels frequently to avoid redeposition of soil.

*(Or use alternate Concentrate Use directions)*

**FOR USE AS A NON-ACID BOWL CLEANER/DISINFECTANT IN TOILET BOWLS FROM CONCENTRATE:**

1. Pre-clean heavily soiled areas.
2. Add ¼ ounce (of (this product) (Product Name)) directly into the toilet bowl for a 1:512 dilution.
3. Swab entire surface area especially under the rim.
4. Repeat and allow entire surface to remain wet for ten (10) minutes.
5. Flush toilet and rinse swab applicator thoroughly.

*(Or use alternate Concentrate Use directions)*

**TO CLEAN AND DISINFECT TOILET BOWLS:** A preliminary cleaning is required for the removal of heavy soil prior to disinfection. Fill toilet bowl with clean water. Saturate mop with ¼ ounce (of (this product) (Product Name)) while holding bottle and mop applicator over bowl. Swab bowl completely making sure to get under the rim. Let solution stand for 10 minutes then flush. Rinse applicator completely.

*(Or use alternate Concentrate Use directions)*

**TO DISINFECT TOILET BOWLS:** A preliminary cleaning is required for the removal of heavy soil prior to disinfection. Fill toilet bowl with clean water. [(Apply) (Squeeze)] ¼ ounce of [(bowl cleaner) (this product) (Product Name)] onto bowl brush. Clean the entire unit especially under the rim at water outlets. Allow surface to remain wet for 10 minutes. Flush and rinse out bowl burhs with clean water.

*(Or use alternate Concentrate Use directions)*

**TO DISINFECT TOILET BOWLS:** Flush to remove heavy soil. To clean, simply squirt ¼ ounce (of (this product) (Product Name)) under the rim and around sides. Allow it to stand for several minutes then scrub entire surface (especially under the rim) with a [(bowl) (toilet)] mop. Flush and rinse. To disinfect, squirt ¼ ounce (of (this product) (Product Name)) under the rim and around the sides. Scrub bowl with mop. Allow solution to remain in the bowl for 10 minutes after scrubbing. Flush and rinse.

*(Or use alternate Concentrate Use directions)*

**TO DISINFECT TOILET BOWLS:**

1. Remove gross filth and heavy soil deposits.
2. Fill toilet bowl with clean water.
3. Apply ¼ ounce (of (this product) (Product Name)) to swab applicator, brush, cloth, mop, sponge, auto scrubber or directly to surface with mechanical spray devise ((hand pump) coarse pump or trigger spray device). For spray applications, spray 6-8 inches from surface. Do not breathe spray.
4. Swab entire surface area, especially under the rim.
5. Allow entire surface to remain wet for ten (10) minutes.
6. Flush toilet and rinse swab applicator thoroughly. Change cloth, sponge or towels frequently to avoid redeposition of soil.

**FOR HEAVY DUTY CLEANING:** Pre-clean heavily soiled areas. Empty toilet bowl or urinal and apply 1 ounce (of (this product) (Product Name)) per (one) (1) gallon of water use solution to exposed surfaces including under the rim with a brush, cloth, mop, sponge, auto scrubber or directly to surface with mechanical spray devise ((hand pump) coarse pump or trigger spray device). Allow solution to soak to aid in soil removal. For spray applications, spray 6-8 inches from surface. Do not breathe spray. Brush or swab thoroughly and allow solution to stand for 10 minutes and flush. Change cloth, sponge or towels frequently to avoid redeposition of soil. [(A fresh solution must be prepared) (Prepare a fresh solution) at least daily or when use solution becomes visibly [(diluted) (soiled) (dirty)].

**USE SOLUTION INSTRUCTIONS**

**PREPARATION OF USE SOLUTION:** Mix ¼ ounce (of (this product) (Product Name)) per (one) (1) gallon of water (OR) Mix [(one) (1) (a)] 1-oz. packet with 4 gallons of water (or equivalent use dilution) (425 ppm active).

**FROM USE SOLUTION:** Pre-clean surface. Empty water out of toilet bowl or urinal and apply ½ to 1 ounce use solution to exposed surfaces, including under the rim with a brush, cloth, mop, sponge, auto scrubber or foam gun (device) or mechanical spray devise ((hand pump) coarse pump or trigger spray device). For spray applications, spray 6-8 inches from surface. Do not

breathe spray. Allow solution to stand for 10 minutes and flush. Swab all areas after spraying. Refill toilet bowl or urinal with water. Change cloth, sponge or towels frequently to avoid redeposition of soil. [(A fresh solution must be prepared) (Prepare a fresh solution) at least daily or when use solution becomes visibly [(diluted) (soiled) (dirty)].

*(Or use alternate Concentrate Use directions)*

**FOR USE AS A NON-ACID BOWL CLEANER/DISINFECTANT IN TOILET BOWLS (AND URINALS) FROM USE-DILUTION:**

1. Pre-clean heavily soiled areas.
2. Empty toilet bowls by forcing water through the trap.
3. Apply ½ to 1 ounce of use solution to expose surfaces in toilet bowls and urinals.
4. Swab entire surface area especially under the rim.
5. Allow entire surface to remain wet for ten (10) minutes.
6. Flush toilet and rinse swab applicator thoroughly.
7. Refill toilet bowl or urinal with water
8. [(A fresh solution must be prepared) (Prepare a fresh solution) at least daily or when use solution becomes visibly [(diluted) (soiled) (dirty)].

*(Or use alternate Concentrate Use directions)*

**TOILET BOWLS/URINALS:** Swab bowl with brush to remove heavy soil prior to cleaning or disinfecting. Clean by applying use solution around the bowl and up under the rim. Stubborn stains may require brushing. To disinfect, first pre-clean to remove heavy soil, then remove or expel the residual bowl water over the inner trap. Pour in ½ to 1 oz. of the use dilution to thoroughly cover surfaces. Swab the bowl completely using a scrub brush or mop, making sure to get under rim. Let stand for 10 minutes or overnight, then flush. Refill toilet bowl or urinal with water. [(A fresh solution must be prepared) (Prepare a fresh solution) at least daily or when use solution becomes visibly [(diluted) (soiled) (dirty)].

*(Or use alternate Concentrate Use directions)*

**TOILET BOWL (AND URINAL) DISINFECTION/CLEANER DIRECTIONS:** Remove gross filth prior to disinfection. Empty toilet bowl or urinal of water and apply ½ to 1 ounce of use solution directly to exposed surfaces including under the rim. Brush or swab thoroughly with a brush, cloth, mop, sponge, auto scrubber or mechanical spray devise ((hand pump) coarse pump or trigger spray device) and allow solution to stand for 10 minutes and flush. For spray applications, spray 6-8 inches from surface. Allow toilet bowl to fill with water. [(A fresh solution must be prepared) (Prepare a fresh solution) at least daily or when use solution becomes visibly [(diluted) (soiled) (dirty)].

*(Or use alternate Concentrate Use directions)*

**TO CLEAN AND DISINFECT URINALS:** Flush to remove heavy soil. Remove screens and strainers. Empty urinal of water. Then squirt ½ to 1 ounce of use solution around the edges and top. Allow solution to flow down over surfaces. Allow it to stand several minutes before scrubbing, then flush and rinse. To disinfect, allow solution to remain in urinal for at least 10 minutes after scrubbing. Refill toilet bowl or urinal with water. [(A fresh solution must be prepared) (Prepare a fresh solution) at least daily or when use solution becomes visibly [(diluted) (soiled) (dirty)].

*(Or use alternate Concentrate Use directions)*

**TO DISINFECT URINALS:**

1. Remove gross filth and heavy soil deposits.
2. Empty urinal or water.
3. Apply ½ to 1 ounce of use solution directly to urinal surfaces including water outlets area for general cleaning.
4. Then pour additional solution on applicator.
5. Clean entire unit, especially under rim at water outlets, with applicator.
6. Remove screen trap to deodorize drain and apply ¼ ounce directly on edge and into drain.
7. Wait for 10 minutes, flush and rinse applicator.
8. Refill urinal with water.
9. [(A fresh solution must be prepared) (Prepare a fresh solution) at least daily or when use solution becomes visibly [(diluted) (soiled) (dirty)].

*(Or use alternate Concentrate Use directions)*

**DISINFECTION AND CLEANING TOILET BOWLS AND URINALS:**

1. Preliminary cleaning is required for heavily soiled surfaces.

2. With a swab mop applicator, remove water from bowl by forcing out trap.
3. Press swab mop against side of bowl to remove excess water from applicator.
4. Apply ½ to 1 ounce of use solution evenly onto surface to be cleaned and disinfected.
5. Swab entire surface area especially under the rim where outlets are located.
6. Allow surface to remain wet on surfaces at least 10 minutes.
7. Flush toilet and rinse applicator thoroughly.
8. Refill bowl with water.
9. [(A fresh solution must be prepared) (Prepare a fresh solution) at least daily or when use solution becomes visibly [(diluted) (soiled) (dirty)].

**DEEP CLEANING/DISINFECTING WATERFREE (WATERLESS) URINALS:** Preliminary cleaning is required for heavily soiled surfaces. Remove and properly dispose of cartridge according to manufacturer's directions. Deep clean or disinfect the entire urinal by applying ½ to 1 ounce of use solution directly onto surface. [(Brush) (Scrub)] surfaces and let solution stand for 10 minutes. Dry surface with a soft cloth. Do not pour excess or soiled water down waterless urinal trap. [(A fresh solution must be prepared) (Prepare a fresh solution) at least daily or when use solution becomes visibly [(diluted) (soiled) (dirty)].

**GENERAL CLEANING TOILET BOWL:** (Apply) (Open cap) (Squeeze gently, directing) ½ to 1 ounce of bowl cleaner under the rim and on sides of bowl (inside only). Brush, clean and flush toilet. (Close cap). Rinse brush with clean water. Do not use on any other surfaces including toilet seat, toilet lid, countertops, tubs and sinks. To clean other acid resistant toilet bowls or urinals, dilute product with 3 parts water. Do not allow solution to remain on surfaces without immediately rinsing thoroughly with water.

**TO CLEAN WATERFREE (WATERLESS) URINALS:** Remove any debris from the bowl. Spray ½ - 1 oz. of use solution onto urinal surface. DO NOT spray product directly onto cartridge. Wipe surface to clean. Change cartridge as needed.

**FOR HEAVY DUTY CLEANING:** Pre-clean heavily soiled areas. Empty toilet bowl or urinal of water and apply 2 – 4 ounces of use solution to exposed surfaces including under the rim with a rush, cloth, mop, sponge, auto scrubber or foam gun (device) or mechanical spray device ((hand pump) coarse pump or trigger spray device). For spray applications, spray 6-8 inches from surface. Allow solution to soak to aid in soil removal. Brush or swab thoroughly and allow solution to stand for 10 minutes and flush. Refill toilet bowl or urinal with water. Change cloth, sponge or towels frequently to avoid redeposition of soil. [(A fresh solution must be prepared) (Prepare a fresh solution) at least daily or when use solution becomes visibly [(diluted) (soiled) (dirty)].

#### **OTHER INSTRUCTIONS**

**TO DISINFECT TUBS, SHOWER STALLS, SINKS, FAUCETS:** Swab area and remove gross filth and heavy soil. Apply a solution ¼ ounce (of (this product) (Product name)) per (one) (1) gallon of water (425 ppm active) (or equivalent use dilution) directly onto surface to be cleaned or apply with brush, cloth, sponge, auto scrubber or foam gun (device) or mechanical spray device ((hand pump) coarse pump or trigger spray device) to wet all surfaces thoroughly. Wipe surfaces. Allow surface to remain wet for at least 10 minutes. For spray applications, spray 6-8 inches from surface. DO not allow solution to dry on surface. Rinse thoroughly with water. Change cloth, sponge or towels frequently to avoid redeposition of soil. [(A fresh solution must be prepared) (Prepare a fresh solution) at least daily or when use solution becomes visibly [(diluted) (soiled) (dirty)].

#### **FOR USE TO CLEAN AND DISINFECT SHOWER ROOMS, LOCKER ROOMS AND OTHER LARGE, OPEN AREAS WITH FLOOR DRAINS:**

1. Pre-clean heavily soiled areas.
2. Apply use solution of ¼ ounce (of (this product) (Product name)) per (one) (1) gallons of water (425 ppm active) to floors, walls and ceilings making sure not to over spray. To disinfect, all surfaces must remain wet for 10 minutes.

**Special instructions for foam guns:** Pour concentrate into foam gun bottle and attach bottle to spray nozzle and ensure gun is attached to hose. (*Note: See foam gun*



*instructions for more information.* Make sure setting is set for a 1:512 dilution.) Once in place, squeeze the handle to disperse foam solution. To disinfect, all surfaces must remain wet for ten (10) minutes. *(Foam guns not for use in California.)*

3. Scrub using a deck brush or other coarse material as necessary.
4. Rinse surfaces thoroughly and let air dry.
5. [(A fresh solution must be prepared) (Prepare a fresh solution) at least daily or when use solution becomes visibly [(diluted) (soiled) (dirty)].

## FUNGICIDAL/MOLD & MILDEW

**FUNGICIDAL PERFORMANCE:** At ¼ ounce (of (this product) (Product Name)) per (one) (1) gallon or water use level (425 ppm active) (1:512) (or equivalent use dilution). [(This product) (Product Name) was evaluated in the presence of 5% serum and up to 250-ppm hard water with a 10-minute contact time and found to be effective against the following fungi on hard, non-porous (inanimate) (environmental) surfaces:

*Aspergillus niger* (ATCC 16404)

*Candida albicans* (ATCC 10231)

*Aspergillus fumigates* (ATCC 36607)

At ½ ounce (of (this product) (Product Name)) per (one) (1) gallon of water use level (847 ppm active) (or equivalent use dilution) and with a 10-minute contact time, [(this product) (Product Name)] was evaluated in the presence of 5% blood serum and up to 250-ppm hard water and found to be effective against the following on hard, non-porous (inanimate) (environmental) surfaces:

*Trichophyton mentagrophytes* (ATCC 9533)

**TO KILL FUNGI:** Pre-clean heavily soiled areas. Apply use solution to hard, non-porous environmental surfaces. Allow surface to remain wet for ten (10) minutes. [(Rinse) (Wipe up excess liquid (with a paper towel)) (Allow to air dry)]. Use as directed at a 1:256 dilution (½ fluid ounce per gallon of water) (or equivalent use dilution).

*(or use alternate Fungicidal directions)*

**FUNGICIDAL DIRECTIONS:** For use in areas such as locker rooms, dressing rooms, shower and bath areas and exercise facilities. Use as directed at a 1:256 dilution (½ fluid ounce per gallon or water) (or equivalent use dilution). Allow surface to remain wet for ten (10) minutes. [(Wipe up excess liquid (with a paper towel)) (Allow to air dry)].

*(or use alternate Fungicidal directions)*

**FUNGICIDAL ACTIVITY:** At ½ ounce (of (this product) (Product Name)) per (one) (1) gallon of water use level (or equivalent use dilution) (425 ppm active). [(this product) (Product Name)] is effective against *Trichophyton mentagrophytes* (athlete's food fungus) (a cause of Ringworm) (a cause of Ringworm of the foot) and *Aspergillus niger* on hard non-porous (inanimate) (environmental) surfaces in locker rooms, dressing rooms, shower and bath areas, and exercise facilities. Apply by cloth, sponge, mop, brush, auto scrubber or foam gun (device) or mechanical spray device ((hand pump) coarse pump or trigger spray device). For spray applications, spray 6-8 inches from surface. Do not breathe spray. Saturate surfaces with use solution. Treated surfaces must remain wet for 10 minutes. Allow solution to air dry and repeat treatment every seven days or when new growth appears. Change cloth, sponge or towels frequently to avoid redeposition of soil. [(A fresh solution must be prepared) (Prepare a fresh solution) at least daily or when use solution becomes visibly [(diluted) (soiled) (dirty)].

**MOLD AND MILDEW CONTROL:** To control the growth of mold and mildew and their odors on hard, non-porous (inanimate) (environmental) surfaces, apply use solution of 1:512 dilution (¼ ounce (of (this product) (Product Name)) per (one) (1) gallon of water) (or equivalent use dilution) (425 pp active). Apply by cloth, sponge, mop, brush, auto scrubber or foam gun (device) or mechanical spray device ((hand pump) coarse pump or trigger spray device) to thoroughly wet all treated surfaces completely. Allow surface to remain wet for ten (10) minutes. Allow solution to dry on surface and repeat treatment every seven days or when new growth appears. Change cloth, sponge or towels frequently to avoid redeposition of soil. [(A fresh solution must

be prepared) (Prepare a fresh solution) at least daily or when use solution becomes visibly [(diluted) (soiled) (dirty)].

**TO CONTROL THE GROWTH OF MOLD AND MILDEW ON LARGE, INFLATABLE, NON-POROUS PLASTIC AND RUBBER STRUCTURES:** For use on non-porous (inanimate) (environmental) surfaces such as animals, promotional items, moonwalks, slides, obstacle course play and exercise equipment. Thoroughly clean all surfaces with soap or detergent and rinse with water. Saturate surfaces with a use solution of a ¼ ounce (of (this product) (Product Name)) per (one) (1) gallon of water (425 ppm active) (or equivalent use dilution) of water. Apply by cloth, sponge, mop, brush, auto scrubber or foam gun (device) or mechanical spray device ((hand pump) coarse pump or trigger spray device). For spray applications, spray 6-8 inches from surface. Do not breath spray. Allow surfaces to remain wet for a period of 10 minutes. Ventilate buildings and other closed spaces. Do not use equipment until treatment has been absorbed, set or dried. Change cloth, sponge or towels frequently to avoid redeposition of soil. [(A fresh solution must be prepared) (Prepare a fresh solution) at least daily or when use solution becomes visibly [(diluted) (soiled) (dirty)].

**HUMIDIFIER BACTERIA/ALGAE TREATMENT:** Formulated for use in portable evaporative humidifiers. Thoroughly clean the hard non-porous (inanimate) (environmental) surfaces of the water tank and filters before each heating season, or sooner if necessary. For every gallon of water in the humidifier tank, add ¼ ounce (of (this product) (Product Name)) (or equivalent use dilution). When you refill the tank, add ¼ ounce (of (this product) (Product Name)) for every gallon of water added in the tank (or equivalent use dilution). [(Rinse) (Wipe up excess liquid (with a paper towel)) (Allow to air)].  
Not for use in heat vaporizing or atomizing type vaporizer humidifiers. **(1839-120)**

## DEODORIZATION/CLEANING

**MOLD REMEDIATION/ PREVENTION (Water/Smoke Restoration / Sewer Backup / River Flood Cleanup / Clean Water Source): For Professional Use Only:** For use by Mold Remediation Workers, Mold Remediation Contractors, Certified Mold Remediators, Certified Mold Contractors, Certified Mold Remediation Contractors, Applied Microbial Remediation Technicians, Certified Mold Professional, Certified Restorers, and Mold Remediation Companies.

*(Note to Reviewer: All deodorizing claims can be used with formulas containing fragrances.)*

**CLEANING/DEODORIZING DIRECTIONS:** Add ¼ - 1 ounce (of (this product) (Product Name)) per (one) (1) gallon of water (or equivalent dilution) to clean and deodorize windows, mirrors and non-food contact surfaces. Apply solution with a brush, mop, cloth, sponge, auto scrubber or foam gun (device) or mechanical spray device ((hand pump) coarse pump or rigger spray device) so as to wet all surfaces thoroughly. For sprayer applications, spray 6-8 inches from surface. Rub with sponge or cloth. [(Rinse) (Excess material must be wiped up or allowed to air dry) (Wipe up excess liquid (with a paper towel)) (Allow to air dry)]. Do not breathe spray. Change cloth, sponge or towels frequently to avoid redeposition of soil.

**GENERAL DEODORIZATION:** To deodorize, add ¼ ounce (or (this product) (Product Name)) to 1 gallon of water. [(Rinse) (Excess liquid material must be wiped up) (Wipe up excess liquid (with a paper towel)) (Allow to air dry)].

**FOR USE AS A (GENERAL) CLEANER AND/OR DEODORIZER:** Apply use solution (1/4 oz. per gallon of water) to surfaces. [(Rinse) (Wipe up excess liquid (with a paper towel)) (Allow to air dry)]. For heavy-duty use, add 1 ounce per gallon of water (1:128) to clean hard, non-porous (inanimate) (environmental) surfaces.

**FOR DEODORIZING GARBAGE CANS, GARBAGE TRUCKS, INDUSTRIAL WASTE RECEPTACLES AND GARBAGE HANDLING EQUIPMENT:** It is especially important to pre-clean for the product to perform properly. Then, apply a wetting concentration of 1½ ounce

(of (this product) (Product Name)) per (one) (1) gallon of water (or equivalent use dilution) (2,500 ppm quat active).

**FOR DEODORIZING SEPTIC STORAGE TANKS:** When tanks are empty, pour ¼ oz. (of (this product) (Product Name)) per (one) (1) gallon of water (425 ppm active) (or equivalent use dilution) into septic storage tank on recreation vehicles, campers and boats to control odors. As tank fills with sewage and the vehicle is moving, this solution will mix and provide an adequate deodorizing solution for this use. [(This product) (Product Name)] is to be used on gray and black water tanks only. Check with local state, or federal authorities before disposing of sewage in accordance to federal, state and local regulations for waste disposal.

**RV HOLDING TANKS/RECREATIONAL VEHICLES:** For toilet waste and holding tanks, cover bottoms of holding tank with water and add ¼ - ½ ounce (of (this product) (Product Name)) per gallon of water (or equivalent use dilution) to the tank. For kitchen waste, add ¼ to ½ ounce (of (this product) (Product Name)) per gallon of water (or equivalent use dilution) to gray water tank as needed to control malodors created by dirty dishwasher.

**AUTOMOTIVE USES:** A solution of ¼ ounce (of (this product) (Product Name)) per (one) (1) gallon of water (or equivalent use dilution) (425 ppm active) will effectively neutralize damp musty odors. Spray or apply onto seats, carpets, headliner and ashtray or into trunk and all vents to eliminate odors from tobacco, beverage spills and musty carpet. For sprayer applications, use a coarse spray device. [(Wipe up excess liquid (with a paper towel)) (Allow to air dry)].

**AIR FRESHENER:** A solution of ¼ ounce (of (this product) (Product Name)) per (one) (1) gallon of water (or equivalent use dilution) (425 ppm active) will effectively neutralize damp musty odors caused by mildew in storage areas, basements, closets, bathrooms, and A/C filters. Spray to eliminate odors from tobacco, food, beverage spills, and musty carpet. For sprayer applications, use a coarse spray device. Allow surfaces to air dry.

**FOR ODORS CAUSED BY DOGS, CATS AND OTHER DOMESTIC ANIMALS:** Use on rugs, floors, walls, tile, cages, cates, mats, liter boxes, floor coverings, or any surfaces soiled by a pet. Test a small inconspicuous area first. Blot problem area. Then following directions for **GENERAL DEODORIZARION**.

**WATERBED CONDITIONER:** When used as a waterbed conditioner, [(this product) (Product Name)] eliminates odor.

If the bed has not been treated properly, drain bed completely. Add 15 gallons of water and mix vigorously. Drain bed again. Fill bed with water and follow dosage directions.

**Dosage:** To control the odor caused by bacteria, add 4 1/8 fluid ounces (of (this product) (Product Name)) in a free flow waterbed of 90- to 180-gallon capacity. Add 8¼ fluid ounces (of (this product) (Product Name)) in a waveless/fiber waterbed mattress of 90- to 180-gallon capacity. Repeat application every 4 to 6 months.

**GLASS CLEANING/DEODORIZING DIRECTIONS:** Add ¼ to ½ ounce (of (this product) (Product Name)) per (one) (1) gallon of water (or equivalent use dilution) to clean and deodorize windows, mirrors, and glass surfaces. Use a coarse spray device. For spray applications, spray 6-8 inches from surface. Rub with sponge or cloth. Do not breathe spray.

**SEWER BACKUP & RIVER FLOODING:**

To use as a deodorizer, dilute ¼ to ½ ounce (of (this product) (Product Name)) per (one) (1) gallon of water allowing for the diluting along with non-salvageable materials. Saturate all affected areas with a mechanical spray device (coarse pump or trigger spray device) before and after cleaning and extraction. For spray applications, spray 6-8 inches from surface. Rub with sponge or cloth. Use proper ventilation, open windows. **FOR PROFESSIONAL USE ONLY, see MOLD REMEDIATION/ PREVENTION section.**

**CARPETS, CARPET CUSHIONS, UPHOLSTERY, DRAPES AND OTHER POROUS**

**MATERIALS, SUB FLOORS, DRYWALL, TRIM AND FRAME LUMBER, TACKLES STRIP AND PANELING:**

To use as a deodorizer against water damage, extract excess water. Test hidden area for colorfastness. Dilute ¼ to ½ ounce of the product per (one) (1) gallon of water, allowing for the diluting effect of absorbed water within saturated materials remove gross filth or heavy soil. Apply directly with a mechanical spray device (coarse pump or trigger spray device) to fully saturate affected materials. For spray applications, spray 6-8 inches from surface. Roll, brush or agitate into materials and allow the materials to remain damp for 10 minutes. Follow with a thorough extraction. Dry rapidly and thoroughly. **FOR PROFESSIONAL USE ONLY, see MOLD REMEDIATION/ PREVENTION section.**

**SMOKE DAMAGE RESTORATION:** Effective against odor caused by smoke damage for home, institutional, and industrial use. [(This product) (Product Name)] is particularly suitable for use in smoke damage restoration situations. Saturate affected materials with enough product to remain wet for at least 10 minutes Use proper ventilation.

**WATER/SMOKE DAMAGE RESTORATION:** Effective against odor caused by smoke and water damage for home, institutional and industrial use. [(This product) (Product Name)] is particularly suitable for use in water damage restoration situations. Saturate affected materials with enough product to remain wet for at least 10 minutes Use proper ventilation. **FOR PROFESSIONAL USE ONLY, see MOLD REMEDIATION/ PREVENTION section.**

**SPECIAL INSTURCTIONS FOR CLEANING CARPET:** [(This product) (Product Name)] can be used in industrial and institutional, commercial and residential areas fibers. Do not use on wool. Vacuum carpet thoroughly prior to cleaning. Est fabric for color fastness.

**For Portable Extraction Units:** Mix a ¼ ounce (of (this product) (Product Name)) per (one) (1) gallon of water (or equivalent use dilution).

**For Truck Mounted Extraction Machines:** Mix a ¼ ounce (of (this product) (Product Name)) per (one) (1) gallon of water (or equivalent use dilution) and meter at 2 gallons per hour.

**For Rotary Floor Machines:** Mix a ¼ ounce (of (this product) (Product Name)) per (one) (1) gallon of water (or equivalent use dilution) and apply at the rate of 300-500 sq. ft. per (one) (1) gallon.

Do not mix (this product) (Product Name) with other cleaning products. Follow the cleaning procedures specified by the manufacturer of the cleaning equipment. After using (this product) (Product Name), set the carpet pile and protect the carpet from furniture legs and bases while drying. Do not over wet. If applied to stain resistant nylon carpet, apply a fabric protector according to the carpet manufacturer's directions.

**CARPET CLEANING/DEODORIZATION FOR HOME, INSTITUTIONAL, AND INDUSTRIAL USE**

[(This product) (Product Name)] cleans and deodorizes the carpet. It can be used in industrial, institutional, commercial and residential areas such as homes, motels, and hotels chains.

Vacuum carpet thoroughly prior to application. Mix ¼ ounce of product per (one) (1) gallon of water (or equivalent use dilution). Follow the Injection and/or Extraction procedures as specified for any conventional steam cleaning equipment you are using. For rotary floor machines, mix ¼ ounce (of (this product) (Product Name)) per (one) (1) gallon of water and spray on carpe at a rate of 300-500 sq. ft. per (one) (1) gallon.

[(For use) (Use (this product) (Product Name))] on washable synthetic fibers. Do not use on wool. Test color fastness or carpet before use. Apply diluted product to a small concealed spot, then rub with a clean white cloth. If color changes or transfers to cloth, a water-based product must not be used.

After using this product, set carpet pile in on direction with a stiff brush. Place aluminum foil under the legs of furniture while carpet is drying. Over-wetting can cause carpet to shrink. Manufacturer assumes no responsibility for over-wetting misuse.

**Note:** [(This product) (Product Name)] must not be mixed with other cleaning products.

**CLEANSING OF BODY SURFACES AND BODY ORIFICES OR HUMAN REMAINS:** [(This product) (Product Name)] removes secretions soil and blood along with their accompany malodor from the surfaces and orifices of human remains. Using a sponge or washcloth, bathe the entire body with a use solution of ¼ ounce (of (this product) (Product Name)) per (one) (1) gallon of water (or equivalent use dilution). A soft brush may be employed on surfaces other than the face. Allow a 10-minute contact time for optimal results. [(Fresh solution must be prepared) (Prepare fresh solution)] for each [(cadaver) (remains)] at least daily or [(more than if) (when)] use solution becomes visibly [(dirty) (soiled) (diluted)].

**FOR USE ON FINISHED FLOORS:** To limit gloss reduction, use ¼ ounce (of (this product) (Product Name)) per (one) (1) gallon of water (or equivalent use dilution). Apply with a damp mop or auto scrubber. Allow surface to air dry.

## OTHER USES

**DISINFECTION OF HARD, NON-POROUS (INANIMATE) (ENVIRONMENTAL) SURFACES IN WHIRLPOOL UNITS:** After using the whirlpool unit, drain and refill with fresh water to just cover the intake valve. Add ¼ ounce (of (this product) (Product Name)) per (one) (1) gallon of water (or equivalent use dilution) at this point. Briefly start the pump to circulate the solution. Turn off the pump. Wash down the unit sides, seat of the chair, lift and (nay) (all) related equipment with a clean swab, brush or sponge. Treated surfaces must remain wet for 10 minutes. After the unit has been thoroughly disinfected, drain the solution from the unit and rinse any/all cleaned surfaces with fresh water. Repeat for heavy soiled units. [(A fresh solution must be prepared) (Prepare fresh solution)] at least daily or when use solution becomes visibly [(diluted) (soiled) (dirty)].

**ULTRASONIC BATH DISINFECTANT DIRECTIONS:** Pre-clean heavily soiled objects. Use (this product) (Product Name) to disinfect hard, non-porous (inanimate) (environmental) non-critical objects compatible with Ultrasonic cleaning units. Pour fresh solution at ¼ ounce (of (this product) (Product Name)) per (one) (1) gallon of water (1:512) (or equivalent use dilution) directly into bath chamber. Place objects into unit and operate for a minimum of 10 minutes (according to the manufacturers' use directions). [(Remove objects and [(wash) (rinse) with sterile water (for injection) (Allow to air dry)]. [(A fresh solution must be prepared) (Prepare a fresh solution)] at least daily or when use solution becomes visibly [(dilute) (soiled) (dirty)].

**FOR DISINFECTING HARD, NON-POROUS (INANIMATE) (ENVIRONMENTAL) (SEALED) (FIBERGLASS) BATH AND THERAPY EQUIPMENT:** To remove body oils, dead tissue, soil and all other buildups or organic matter on hard non-porous (inanimate) (environmental) surfaces after using the unit, drain the water and refill with fresh water to jus cover the intake valve. Add 1¼ ounces (of (this product) (Product Name)) for each 5 gallons of water (1/4 ounce (of (this product) (Product Name)) per one gallon) (425 ppm active) (or equivalent use dilution) in the unit at this point. Briefly start the pump to circulate the solution. Turn off the pump. Wash down the unit sides, seat of the chair lift, and any/all related equipment with a clean swan, brush or sponge. [(Product to surface contact time must be at least) (Treated surfaces must remain wet for)] 10 minutes for proper disinfection. After the unit has been thoroughly disinfected, drain solutions from the unit and rinse any/all cleaned surfaces with fresh water. The unit is ready for reuse.

**FOR DISINFECTING BAGLESS VACUUM CLEANERS:** Add ¼ ounce (of (this product) (Product Name)) to (one) (1) gallon of water (425 ppm active) (or equivalent use dilution). Turn off and unplug vacuum cleaner. Remove the hard, non-porous container from vacuum cleaner that houses collected material. Empty contents into a waste receptacle. Rinse collection

container with water and wipe clean to remove any additional collected material. Apply solution to collection container with a brush, cloth, sponge or mechanical spray device ((hand pump) coarse pump or trigger spray device) so as to wet all surfaces thoroughly. For sprayer applications, spray 6-8 inches from surface. Allow surfaces to remain wet for 10 minutes. [(Wipe up excess liquid (with a paper towel)) (Allow to air dry)]. Reattach container to vacuum cleaner. Change cloth, sponge or towels frequently to avoid redeposition of soil. [(A fresh solution must be prepared) (Prepare a fresh solution)] at least daily or when use solution becomes visibly [(diluted) (soiled) (dirty)].

**FOR DISINFECTING NON-POROUS VACUUM CLEANER BRUSHES:** Add ¼ ounce (of (this product) (Product Name)) to (one) (1) gallon of water (425 ppm active) (or equivalent use dilution). Turn off and unplug vacuum cleaner. Remove the non-porous brushes from vacuum cleaner. Submerge brush in solution so as to wet all surfaces thoroughly. Allow surfaces to remain wet for 10 minutes. [(Wipe up excess liquid (with a paper towel)) (Allow to air dry)]. Reattach brushes to vacuum cleaner. [(A fresh solution must be prepared) (Prepare a fresh solution)] at least daily or when use solution becomes visibly [(diluted) (soiled) (dirty)].

**COMMERCIAL FLORIST USE DICATIONS:** For heavily soiled areas, a preliminary cleaning is required. To clean, disinfect and deodorize hard non-porous (inanimate) (environmental) surfaces in one step, prepare use solution by [(adding) (mixing)] ¼ ounce (of (this product) (Product Name)) per (one) (1) gallon of water (1:512) (or equivalent use dilution). For heavy-duty use, [(add) (mix)] ¼ ounce (of (this product) (Product Name)) per (one) (1) gallon of water (1:512) (or equivalent use dilution). Remove all leaves, petals, garbage and refuse. Pre-clean surfaces using pressurized water where possible. Apply use solution to hard (inanimate) (environmental) non-porous surfaces thoroughly wetting surfaces as required with a cloth, mop, brush, sponge, auto scrubber or foam gun (deice) or mechanical spray device ((hand pump) coarse pump or trigger spray device). For sprayer applications, spray 6-8 inches from surfaces. Rub with brush, sponge, mop or cloth. DO not breathe spray. Treated surfaces must remain wet for 10 minutes. [(Wipe up excess liquid (with a paper towel)) (Allow to air dry)]. Change cloth, sponge or towels frequently to avoid redeposition of soil. [(A fresh solution must be prepared) (Prepare a fresh solution)] at least daily or when use solution becomes visibly [(dilute) (soiled) (dirty)].

**WORK AREAS AND BENCHES:** Spray or swab hard non-porous (inanimate) (environmental) working surfaces with a solution of ¼ oz. (of (this product) (Product Name)) per (one) (1) gallon of water (or equivalent use dilution) (425 ppm active) before each work period and again after each plant is completed to help control transfer of disease such as *Botrytis*, crown rot, downy mildew, *Erwinia* and root rot. Allow surface to remain wet for 10 minutes. To apply solution as a sprayer application, use as a coarse spray only and spray 6-8 inches from surfaces. [(Wipe up excess liquid (with a paper towel)) (Allow to air dry)]. Change cloth, sponge or towels frequently to avoid redeposition of soil. [(A fresh solution must be prepared) (Prepare a fresh solution)] at least daily or when use solution becomes visibly [(dilute) (soiled) (dirty)].

**POTS, FLATS and FLOWER BUCKETS:** Brush or wash used pots and flats, then soak in a solution of ¼ oz. (of (this product) (Product Name)) per (one) (1) gallon of water (or equivalent use dilution) (425 ppm active) for 10 minutes to help control transfer of disease such as anthracnose, blight, *Botrytis*, crown rot, *Erwinia*, mildew, root rot and rust. [(Wipe up excess liquid (with a paper towel)) (Allow to air dry)]. [(A fresh solution must be prepared) (Prepare a fresh solution)] at least daily or when use solution becomes visibly [(dilute) (soiled) (dirty)].

**CUTTING TOOLS:** Soak cutting edge of tool for 10 minutes in a solution of ¼ oz. (of (this product) (Product Name)) per (one) (1) gallon of water (or equivalent use dilution) (425 ppm active) before use to help control transfer of diseases such as *Botrytis*, *Erwinia*, root and stem rots, and Tobacco Mosaic Virus (TMV). [(Wipe up excess liquid (with a paper towel)) (Allow to air dry)]. [(A fresh solution must be prepared) (Prepare a fresh solution)] at least daily or when use solution becomes visibly [(dilute) (soiled) (dirty)]. Dry and oil tools at the end of each workday.

## DIRECTIONS FOR HOUSEHOLD USE

**KITCHEN/BATHROOM/HOUSEHOLD CLEANING:** Apply ¼ oz. (of (this product) (Product Name)) per gallon of water (425 ppm active) (or equivalent use dilution) solution with a brush, cloth, sponge, mop, auto scrubber or foam gun (device) or mechanical spray device ((hand pump) coarse pump or trigger spray device) directly onto hard, non-porous (inanimate) (environmental) surface. For spray applications, hold container 6-8 inches from surface and spray until thoroughly wet. [(Rinse) (Wipe the soiled area clean) (Wipe up excess liquid (with a paper towel)) (Allow to air dry)]. [(This product) (Product Name)] is not to be used on dishware, glasses or eating utensils. For food contact surfaces, follow by a potable water rinse. Change cloth, sponge or towels frequently to avoid redeposition of soil.

**DISINFECT/DEODORIZE:** To disinfect hard, non-porous (inanimate) (environmental) surfaces such as floors, walls, counter, sinks, tubs, toilets, glazed tile, exterior surfaces of appliances, refrigerators or freezers, microwave exteriors, stove tops, and hoods, tables, garbage pails and faucets, apply ¼ oz. (of (this product) (Product Name)) per (one) (1) gallon of water (425 ppm active) (or equivalent use dilution) with brush, cloth, sponge, mop, auto scrubber or foam gun (device) or mechanical spray device ((hand pump), coarse pump or trigger spray device). For spray applications, hold container 6 inches to 8 inches from surface and spray until thoroughly wet. Treated surface must remain wet for 10 minutes before wiping. For heavily soiled area, a pre-cleaning step is required. The pre-cleaning step must be done according to the instructions under **Kitchen/Bathroom/Household Cleaning** directions. [(Rinse with potable water after use on surfaces that come in contact with food) (Wipe up excess liquid (with a paper towel) (allow to air dry))]. Change cloth, sponge or towels frequently to avoid redeposition of soil. [(A fresh solution must be prepared) (Prepare a fresh solution)] at least daily or when use solution becomes visibly [(diluted) (soiled) (dirty)].

#### **SANITIZER DIRECTIONS FOR NON-FOOD CONTACT SURFACES**

##### **SANITIZATION OF HARD, NON-POROUS (INANIMATE) (ENVIRONMENTAL) SURFACES**

**IN WHIRLPOOL UNITS:** To remove body oils, dead tissue, soil and all other buildups organic matter on inanimate surfaces after using the whirlpool unit, drain and refill with fresh water to just cover the intake valve. Add ¼ ounce (of (this product) (Product Name)) for gallon of (or equivalent use dilution) (425 ppm active) water at this point. Briefly start the pump to circulate the solution. Turn off the pump. Wash down the unit sides, seat of the chair, lift and any/all related equipment with a clean swan, brush or sponge. Treated surfaces must remain wet for 2 minutes. After the unit has been thoroughly sanitized, drain the solution from the unit and rinse (any) (all) cleaned surfaces with fresh water. Repeat for heavy soiled units. [(A fresh solution must be prepared) (Prepare a fresh solution)] at least daily or when use solution becomes visibly [(diluted) (soiled) (dirty)].

#### **SANITIZATION of EXTERIOR HOUSEHOLD SURFACES DIRECTIONS**

**Preparation of Use Solution:** Add ¼ ounce (of (this product) (Product Name)) per (one) (1) gallon of water (425 ppm active) (or equivalent use dilution) to sanitize hard, non-porous (inanimate) (environmental) exterior surfaces such as vinyl, plastic, sealed concrete, painted or sealed woodwork, and sealed stucco. Surfaces to be treated include house siding, decks, patios, walkways and driveways.

**Application:** Pre-clean heavily soiled areas. Apply solution with a brush, mop, cloth, sponge, auto scrubber or foam gun (device) or mechanical spray device ((hand pump) coarse pump or trigger spray device), or with a low-pressure (less than 60 psi) airless sprayer so as to wet all surfaces thoroughly. Treated surfaces must remain wet for 2 minutes. Wearing suitable respiratory protective equipment and protective eyewear to control exposure to spray, pressure wash surfaces to thoroughly clean all treated areas using a high-pressure spray. Do not breath spray. Change cloth, sponge or towels frequently to avoid redeposition of soil. [(A fresh solution must be prepared) (Prepare a fresh solution)] at least daily or when use solution becomes visibly [(diluted) (soiled) (dirty)]. One-half gallon of diluted product will treat 200-300 sq. ft. of surface.

#### **DIRECTIONS FOR ALTERNATE CONTAINERS**

##### **AUTOMATED DILUTION SYSTEM (DILUTION SYSTEMS TRADE NAME) INSTRUCTIONS:**

Remove [(cap) (spray nozzle)] from empty container. Fill empty container with a newly prepared use solution. Replace [(cap) (spray nozzle)]. Place correct use dilution label on newly filled

container.

#### **BAG-IN BOX CONTAINERS**

**How to use this package:** This package is designed to be used with dilution control systems only. Open package and connect to dispense according to directions on the box.

**TRIGGER SPRAYERS:** Fill bottle from dispenser. Apply to surfaces according to directions above.

**MOP BUCKETS:** Fill bucket from dispenser. Set up "Wet Floor" signs. Mop floor surfaces as specified in directions above.

**PACKETS** (For pre-measured tear open packets)

[(Simply) (Tear)] open and pour contents of packet [(1 ounce per 4 gallons) (½ ounce per 1 gallon)] of water. Keep packets in box until ready to use. (**Note:** Amount of water to be determined by dilution packet rate.)

#### **REFILLS**

To Refill Concentrate From Large Containers Into Smaller Containers: [(This product) (Product Name)] may be used to fill and refill clean, properly labeled containers for dilution elsewhere within your facility. Make sure the small container has been cleaned, dried and properly labeled according to state and local regulations. Also make sure other items (funnels or hand pumps) are properly cleaned and dried. To refill, simply pour (or pump product) from the larger container directly into the smaller one being careful not to spill any product. Keep both containers sealed when not in use.

*(Note to reviewer: The title and first statement of this section must appear on every label, followed by the appropriate Storage and Disposal section. Brackets [ ] indicate that one option within the brackets MUST be used in the final label text. Each option within the brackets is enclosed in a set of parenthesis ( ). All "Notes" are only for reviewers and will not be included on label.)*

## **STORAGE AND DISPOSAL**

Do not contaminate water, food, or feed by storage and disposal.

*(FOR USE ON NON-REFILLABLE CONTAINERS WITH HOUSEHOLD/RESIDENTIAL USES)*

**PESTICIDE DISPOSAL/CONTAINER HANDLING/CONTAINER DISPOSAL:** Non-refillable container. Store only in original container in areas inaccessible to children. Triple rinse container. Do not reuse empty container. Wrap (container) and put in trash or offer for recycling if available. *(FOR USE ON NON-REFILLABLE CONTAINERS WITH INSTITUTIONAL/ COMMERCIAL/ INDUSTRIAL)*

*(Note: To be used with either Nonpublic health or Public health uses in this section.)*

*(Note: For use on containers greater than one gallon)*

**PESTICIDE STORAGE:** Open dumping is prohibited. Store only in original container. DO not reuse empty container. If a leaky container must be contained within another, mark the outer container to identify the contents. Store pesticides away from food, pet food, feed, seed, fertilizers, and veterinary supplies. Keep [(this product) (Product Name)] under locked storage sufficient to make it inaccessible to children or persons unfamiliar with its proper use.

*(Note: For use on containers greater than one gallon)*

**PESTICIDE STORAGE:** Pesticide wastes are acutely hazardous. Improper disposal of excess pesticide, spray mixture or rinsate is a violation of Federal Law. If these wastes cannot be disposed of by use according to label instructions, contact your State Pesticide or Environmental Control Agency, or the Hazardous Waste Representative at the nearest EPA Regional Office for guidance.

**CONTAINER DISPOSAL:** *(Note: Only one of the following Container Disposal paragraphs will be used, depending on packaging type.)*

Non-refillable container. Do not reuse this container to hold materials other than pesticides or diluted pesticides (rinsate). Offer for recycling if available or puncture and dispose in a sanitary landfill, or by other procedures approved by state and local authorities. If rinsate cannot be used, follow Pesticide Disposal instructions.



*(Note: Several of our customers' packaging options are sealed containers or bottles designed to reduce worker exposure to the concentrate. None of these can be triple rinsed because they are closed sealed containers. The following text will be used on these non-refillable sealed container types only.)*

Non-refillable container. Do not reuse or refill this container. Wrap empty container and put in trash.

*(Note: The following text will be used on non-refillable RTU container labels only.)*

Non-refillable container. Do not reuse or refill this container. Wrap empty container and put in trash.

*(Note: The following text will be used on the BAG in BOX container types only. No Residue Removal instructions are used when BAG in BOX container disposal instructions is used.)*

**BAG in BOX CONTAINER DISPOSAL:** Completely empty bag into application equipment. Then offer for recycling if available or dispose of in a sanitary landfill, or by incinerations, or by other procedures allowed by state and local authorities.

*(Note: For use on containers of one gallon or less. The following replaces the above "Pesticide Storage" "Pesticide Disposal" and "Container Disposal" directions in the INSTITUTIONAL/ COMMERCIAL/ INDUSTRIAL section.)*

**CONTAINER DISPOSAL/PESTICIDE STORAGE:** Non-refillable container. Store only in original container. DO not reuse empty container. Store pesticides away from food, pet food, feed, seed, fertilizers, and veterinary supplies. Keep [(this product) (Product Name)] under locked storage sufficient to make it inaccessible to children or persons unfamiliar with its proper use. Triple rinse as follows: Fill container ¼ full with water and reclose the container. Agitate vigorously and dispose of rinsate. Repeat two more times. Wrap (container) and put in trash or offer for recycling if available.

*(FOR USE ON REFILLABLE CONTAINERS)*

*(Note: The following text must be used on all refillable containers greater than five gallons.)*

Cleaning the container before final disposal is the responsibility of the person disposing of the container. Cleaning BEFORE refilling is the responsibility of the refiller.

**PESTICIDE STORAGE:** Open dumping is prohibited. Store only in original container. If a leaky container must be contained within another, mark the outer container to identify the contents. Store pesticides away from food, pet food, feed, seed, fertilizers, and veterinary supplies. Keep [(this product) (Product Name)] under locked storage sufficient to make it inaccessible to children or persons unfamiliar with its proper use.

**PESTICIDE STORAGE:** Pesticide wastes are acutely hazardous. Improper disposal of excess pesticide, spray mixture or rinsate is a violation of Federal Law. If these wastes can be disposed of by use according to label instructions, contact your state Pesticide or environmental Control Agency, or the Hazardous Waste Representative at the nearest EPA Regional Office for guidance.

*(Note to Reviewer: Only one of the following paragraphs will be used for Residue Removal/Container Disposal on all refillable and non-refillable INSTITUTIONAL/ COMMERCIAL/ INDUSTRIAL labels.)*

*(Note: For containers up to an including 5 gallons.)*

**RESIDUE REMOVAL INSTRUCTIONS:** triple rinse container (or equivalent) promptly after emptying. Triple rinse as follows: Fill the container ¼ full with water and recap. Shake for seconds. Follow Pesticide Disposal instructions for rinsate disposal. Drain for 10 seconds after the flow begins to drip. Repeat this procedure two more times.

*(For containers greater than 5 gallons with Industrial/Commercial Non-public Health Uses)*

**RESIDUE REMOVAL INSTRUCTIONS:** To clean the container before final disposal, empty the remaining contents from this container into application equipment or a mix tank. Empty remaining contents into application equipment or a mix tank. Fill the container ¼ full with water. Replace and tighten closures. [(Tip container on its side and roll it back and forth, ensuring at least one complete revolution for 30 seconds) (Agitate vigorously or recirculate water for 30 seconds)]. Stand the container on its end and tip it back and forth several times. Empty the

rinsate into application equipment or a mix tank or store rinsate for later use or disposal. Repeat this procedure two more times.

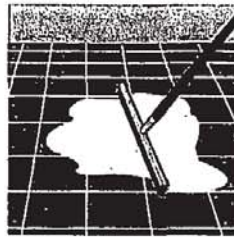
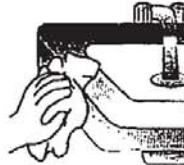
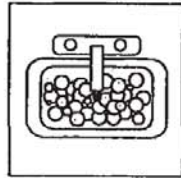
*(For containers greater than 5 gallons with Industrial/Commercial Public Health Uses)*

**RESIDUAL REMOVAL INSTRUCTIONS:** To clean the container before final disposal, triple rinse as follows: Fill container ¼ full with water. [(Tip container on its side and roll it back and forth, ensuring at least one complete revolution for 30 seconds) (Agitate vigorously or recirculate water for 30 seconds)]. Stand the container on its end and tip it back and forth several times. Turn the container over its other end and tip it back and forth several times. Follow Pesticide Disposal instructions for rinsate disposal. Repeat this procedure two more times.

*(For containers up to and including 5 gallons – Refillable containers only.)*

**CONTAINER HANDLING/RESIDUE REMOVAL:** Refillable container. Refill this container with [(this brand) (this product) (Product Name) (pesticide)] only. Do not reuse this container for any other purpose. Cleaning the container before final disposal is the responsibility of the person disposing of the container. Cleaning before refilling is the responsibility of the refiller. To clean the container before final disposal, empty the remaining contents from this container and store for later disposal. Fill container ¼ full with water. Replace and tighten closures. Tip container on its side and roll it back and forth, ensuring at least one complete revolution, for 30 seconds. Stand the container on its end and tip it back and forth several times. Store rinsate for later disposal. Repeat this procedure two more times. Then offer for recycling if available or puncture and dispose of in a sanitary landfill or by incineration.

*(Note to Reviewer: These icons have been requested by our customers and will appear on the label with the appropriate directions.)*



**WARNING**  
**AVISO**



**CHILDREN CAN FALL INTO BUCKET AND DROWN  
KEEP CHILDREN AWAY FROM BUCKETS WITH EVEN A SMALL AMOUNT OF WATER**

Niños pueden caer adentro de el balde y ahogarse.  
Rejete los niños de el balde aunque solamente tenga un poco de agua





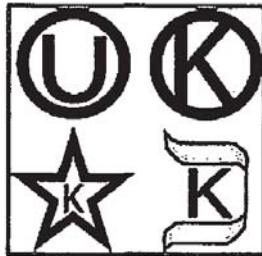
**DISINFECTANT**



**DESINFECTANTE**



**KOSHER**



**1/4 OUNCE PACKET LABEL TO BE USED WITH MASTER CONTAINER LABEL**

**FOR DISINFECTION/ FUNGICIDE/ VIRUCIDE/ SANITIZING USE**

MIX EACH PACKET WITH 1 GALLON OF WATER

**DISIN-VET**

E.P.A. Reg. No. 92206-XX      E.P.A. Est. No.

NET CONTENTS: ½ FLUID OZ.

---

**ACTIVE INGREDIENTS:**

Didecyl Dimethyl Ammonium Chloride ..... 13.02%

Alkyl (C<sub>14</sub>, 50%; C<sub>12</sub>, 40%; C<sub>16</sub>, 10%) .....

dimethyl benzyl ammonium chloride ..... 8.68%

**INERT INGREDIENTS:** ..... 78.30%

**TOTAL** ..... 100.00%

**KEEP OUT OF REACH OF CHILDREN**

**DANGER**

**SEE OUTER CONTAINER FOR PRECAUTIONARY STATEMENTS AND USE DIRECTIONS.**

**DISPOSAL:** Do not reuse container. Wrap and put in trash

**SKV Scientific, Inc.**

3546 North Riverside Avenue,

Rialto, CA 92377

909.822.6000

Toll Free:

1.888.592.7844

**ONE OUNCE PACKET LABEL TO BE USED WITH MASTER CONTAINER LABEL**

**FOR DISINFECTION USE**

MIX EACH PACKET WITH 4 GALLONS OF WATER

**DISIN-VET**

E.P.A. Reg. No. 92206-XX      E.P.A. Est. No.

NET CONTENTS: 1 FLUID OZ.

---

**ACTIVE INGREDIENTS:**

Didecyl Dimethyl Ammonium Chloride ..... 13.02%

Alkyl (C<sub>14</sub>, 50%; C<sub>12</sub>, 40%; C<sub>16</sub>, 10%) .....

dimethyl benzyl ammonium chloride ..... 8.68%

**INERT INGREDIENTS:** ..... 78.30%

**TOTAL** ..... 100.00%

**KEEP OUT OF REACH OF CHILDREN**

**DANGER**

**SEE OUTER CONTAINER FOR PRECAUTIONARY STATEMENTS AND USE DIRECTIONS.**

**DISPOSAL:** Do not reuse container. Wrap and put in trash

**SKV Scientific, Inc.**

3546 North Riverside Avenue,

Rialto, CA 92377

909.822.6000

Toll Free:

1.888.592.7844

**SECONDARY CONTAINER LABEL**

*(Note to Reviewer: This secondary container label will be used only when the product is diluted in accordance with the use directions.)*

**DISIN-VET**

E.P.A. Reg. No. 92206-XX      E.P.A. Est. No.

The product in this container is diluted as directed on the pesticide product label.  
This container is not for further resale or distribution.

**ACTIVE INGREDIENTS:**

Didecyl Dimethyl Ammonium Chloride ..... 13.02%  
Alkyl (C<sub>14</sub>, 50%; C<sub>12</sub>, 40%; C<sub>16</sub>, 10%) .....  
dimethyl benzyl ammonium chloride ..... 8.68%

**INERT INGREDIENTS:** ..... 78.30%

**TOTAL** ..... 100.00%

**KEEP OUT OF REACH OF CHILDREN**

**DANGER**

**PRECAUTIONARY STATEMENTS**

**Hazards to humans and domestic animals**

Causes irreversible eye damage and skin burns. Harmful if swallowed, if absorbed through the skin, or inhaled. Do not get in eyes, on skin or on clothing. Avoid breathing vapor or spray mist. Wear goggles, face shield or shielded safety glass, protective clothing, and chemical-resistant gloves. Wash thoroughly with soap and water after handling and before eating, drinking, using tobacco or using the toilet. Remove and wash contaminated clothing before reuse.

Follow the directions for use on the pesticide label when applying this product. See product label for Storage and Disposal instructions.

**SKV Scientific, Inc.**

3546 North Riverside Avenue,  
Rialto, CA 92377  
909.822.6000

Toll Free:  
1.888.592.7844