



U.S. ENVIRONMENTAL PROTECTION AGENCY
 Office of Pesticide Programs
 Biopesticides and Pollution Prevention Division (7511P)
 1200 Pennsylvania Ave., N.W.
 Washington, D.C. 20460

EPA Reg. Number:

92188-5

Date of Issuance:

8/31/2023

NOTICE OF PESTICIDE:

Registration
 Reregistration
 (under FIFRA, as amended)

Term of Issuance:

Unconditional

Name of Pesticide Product:

Vismax Injection

Name and Address of Registrant (include ZIP Code):

Elemental Enzymes Ag & Turf, LLC
 1685 Galt Industrial Blvd.
 Saint Louis, MO 63132

Note: Changes in labeling differing in substance from that accepted in connection with this registration must be submitted to and accepted by the Biopesticides and Pollution Prevention Division prior to use of the label in commerce. In any correspondence on this product, always refer to the above EPA Registration Number.

On the basis of information furnished by the registrant, the above named pesticide is hereby registered under the Federal Insecticide, Fungicide, and Rodenticide Act (FIFRA or the Act).

Registration is in no way to be construed as an endorsement or recommendation of this product by the U.S. Environmental Protection Agency (EPA). In order to protect health and the environment, the Administrator, on his or her motion, may at any time suspend or cancel the registration of a pesticide in accordance with the Act. The acceptance of any name in connection with the registration of a product under the Act is not to be construed as giving the registrant a right to exclusive use of the name or to its use if it has been covered by others.

This product is unconditionally registered in accordance with FIFRA section 3(c)(5) provided that you:

1. Submit and/or cite all data required for registration or registration review of your product when the EPA requires all registrants of similar products to submit such data.
2. Submit Storage Stability and Corrosion Characteristics (Guidelines 830.6317 and 830.6320) data as these data requirements are not satisfied. A one-year study is required to satisfy these data requirements. You have 18 months from the date of this registration to provide these data to the EPA.

Signature of Approving Official:

Andrew Bryceland, Team Leader
 Biochemical Pesticides Branch
 Biopesticides and Pollution Prevention Division (7511P)
 Office of Pesticide Programs

Date:

8/31/2023

3. If, following consultation with the United States Fish and Wildlife Service, the Service identifies additional issues or needed modifications, EPA will determine whether any changes are needed to this registration or labeling and will notify Elemental Enzymes Ag & Turf, LLC in writing if any changes are necessary and whether they are required to submit an amendment application incorporating any required data or modification, including an amended label. Alternatively, Elemental Enzymes Ag & Turf, LLC must submit a request for voluntary cancellation of the product. If this term of registration is not met, EPA may cancel the registration under an expedited process under FIFRA 6(e).
4. Make the following labeling change before you release this product for shipment: Revise the EPA Registration Number to read, "EPA Reg. No. 92188-5".
5. Submit one (1) copy of the final printed labeling for the record before you release this product for shipment.

Should you wish to add/retain a reference to your company's website on your label, then please be aware that the website becomes labeling under FIFRA and is subject to review by the EPA. If the website is false or misleading, the product will be considered to be misbranded and sale or distribution of the product is unlawful under FIFRA section 12(a)(1)(E). 40 CFR § 156.10(a)(5) lists examples of statements the EPA may consider false or misleading. In addition, regardless of whether a website is referenced on your product's label, claims made on the website may not substantially differ from those claims approved through the registration process. Therefore, should the EPA find or if it is brought to our attention that a website contains false or misleading statements or claims substantially differing from the EPA-approved registration, the website will be referred to the EPA's Office of Enforcement and Compliance Assurance.

Your release for shipment of this product constitutes acceptance of these terms. If these terms are not complied with, this registration will be subject to cancellation in accordance with FIFRA section 6. A stamped copy of the labeling is enclosed for your records. Please also note that the record for this product currently contains the following acceptable Confidential Statement of Formula (CSF):

- Basic CSF dated 3/10/23.

If you have any questions, please contact Chris Pfeifer of my team by phone at 202-566-1599 or via email at pfeifer.chris@epa.gov.

Sincerely,

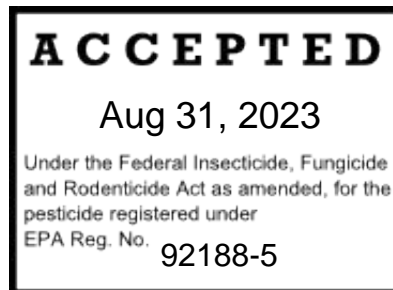
A handwritten signature in blue ink that reads "Andrew C. Bryceland".

Andrew Bryceland, Team Leader
Biochemical Pesticides Branch
Biopesticides and Pollution
Prevention Division (7511P)
Office of Pesticide Programs

[Brackets throughout label indicate optional/alternate graphics or text.]
[FRAC Code P x]

Vismax[®] Injection
[Alternate Brand Names: Aura TI]
Broad Spectrum Activator of Disease Resistance

NOT FOR USE IN CALIFORNIA



ACTIVE INGREDIENT:	By Weight
Flg22-Bt Peptide:	0.0048%
OTHER INGREDIENTS:	99.9952%
TOTAL:	100.0000%

Contains 48 mg ai per liter.

KEEP OUT OF REACH OF CHILDREN

See inside label booklet for Precautionary Statements and Directions for Use.

EPA Reg. No.: 92188-L
EPA Est. No.: [Enter appropriate EPA establishment no.]

Net Contents: 0.23-0.46 oz. per device

FORMULATED FOR
LOVELAND PRODUCTS, INC.®, P.O. BOX 1286, GREELEY, COLORADO 80632-12866
[FORMUALTED IN THE USA]

PRECAUTIONARY STATEMENTS

Wear protective eyewear, long-sleeved shirt and long pants, shoes plus socks and waterproof gloves.

HOT LINE NUMBER

Have the product container or label with you when calling a poison control center or doctor, or going for treatment. For information on this pesticide product (including general health concerns or pesticide incidents), call the National Pesticide Information Center at 1-800-858-7378, Monday through Friday 8:00 AM to 12:00 PM Pacific Standard Time. In the event of a medical emergency, call your poison control center at 1-800-222-1222.

**For help with any spill, leak, fire or exposure involving this material, call day or night
CHEMTREC – 1-800-424-9300.**

ENVIRONMENTAL HAZARDS

For Terrestrial Uses: Do not apply directly to water, or to areas where surface water is present or to intertidal areas below the mean high water mark. Do not contaminate water when disposing of equipment wash water or rinsate.

DIRECTIONS FOR USE

READ ENTIRE LABEL BEFORE USING THIS PRODUCT.

It is a violation of Federal law to use this product in a manner inconsistent with its labeling. Failure to follow label instructions may result in poor control or tree injury.

PRODUCT INFORMATION

Vismax[®] Injection activates the plant immune system through direct action on plant receptors to improve tree and vine health. When injected into the plant vascular system, Vismax[®] Injection provides broad-spectrum prevention and suppression of diseases caused by plant pathogenic bacteria, [and fungi]. Vismax[®] Injection additionally improves crop yield and plant health through plant growth promotion and reduced disease-related stress on the plants. [These benefits are observed in both the presence and absence of disease pressure.] Vismax[®] Injection can be used either alone or in addition to a disease management program with other registered bactericides, fungicides, insecticides, and/or other adjuvants.

APPLICATION INSTRUCTIONS

Injection Timing

This injection technology relies on the natural uptake of the tree or vine; therefore, environmental and plant factors should be taken into consideration before application. Uptake is most effective when the plant is actively growing and transpiring. The best time of the day to complete Vismax[®] Injection applications are morning to mid-afternoon with warm day and cooling night temperatures, moderate humidity, and sunny conditions.

Inject tree and vines that are of producing maturity only. **DO NOT** inject tree or vines that are in a state of dormancy.

Application Instructions

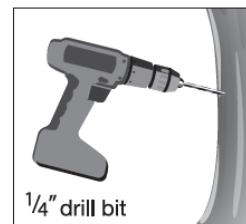
Number of Injection Devices Required for Treatment

For grafted trees and vines with a trunk circumference above the graft line/bud union that is less than 27-inches, use one Vismax® Injection device per plant. When treating trees or vines with multiple trunks originating near the ground, each trunk should receive one application to ensure uniform distribution of the product throughout the plant. One application equates to one injection. For grafted trees or vines with a trunk circumference above the graft line/bud union that is greater than 27-inches, use 2-4 injectors (0.23-0.46 fl oz/device) per plant.

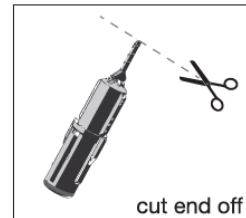
Injection

Prepare injection site in a healthy area of the trunk, free from any defects or rots. For optimal injection device performance, follow instructions below:

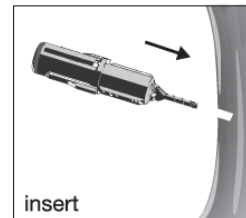
Step 1: Use an electric drill with 1/4" spiral drill bit. Drill downwards at a slight angle, no more than 1 inch into the trunk. Do not inject tree or vine with a trunk diameter less than 5 inches. Drill carefully, do not drill into tree's heartwood.



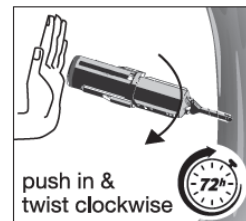
Step 2: Use a sharp snipping tool (i.e. scissors) to cut the tip of the device nozzle. Insert nozzle into prepared hole and twist clockwise into the tree for a snug fit.



Step 3: To engage device and initiate injection of fluid into the tree, slightly push on the end of the device with your hand.



Step 4: Leave injector in the trunk for at least 72 hours or until product has been sufficiently delivered. Prior to removing device, first check the two external arrows. If the arrows are touching, your device is empty. Twist the device counterclockwise and pull along the nozzle to remove from the tree.



Remove inner cartridge by twisting to disengage lock, and then disassembling outer casing. To dispose of inner cartridge, follow disposal directions at the end of the label. Remaining device should be recycled.

TREE AND VINE INJECTION CROPS

Crop	Target Diseases	Injection Site	Application Timing and Rate
<p>Citrus</p> <p>Crop Group 10-10</p> <p>Includes cultivars, varieties, and/or hybrids of these commodities.</p> <p>Australian desert lime Australian finger lime Australian round lime Brown River finger lime Calamondin Citron Citrus hybrids Grapefruit Japanese summer grapefruit Kumquat Lemon Lime Mediterranean mandarin Mount White lime New Guinea wild lime Orange, sour Orange, sweet Pummelo Russell River lime Satsuma mandarin Sweet lime Tachibana orange Tahiti lime Tangelo Tangerine Tangor Trifoliate orange</p>	<p>Citrus Greening <i>(Candidatus Liberibacter asiaticus)</i></p>	<p>Drill single port 6 inches above the graft line/bud union on the trunk.</p> <p>Drill approximately 1 inch deep.</p>	<p>1 application annually during flush.</p> <p>0.23-0.46 fl oz/tree</p>

STORAGE AND DISPOSAL

Do not contaminate water, food or feed by storage, disposal, or cleaning of equipment.

PESTICIDE STORAGE: Store in a cool, dry place, away from children and pets. Keep from freezing.

PESTICIDE DISPOSAL: Wastes resulting from the use of this product may be disposed of on site or at an approved waste disposal facility.

CONTAINER DISPOSAL: Nonrefillable container. Do not reuse or reuse this container. Offer inner and outer housing for recycling or return to Elemental Enzymes.

For help with any spill, leak, fire or exposure involving this material, call day or night CHEMTREC – 1-800-424-9300

CONDITIONS OF SALE AND LIMITATIONS OF WARRANTY AND LIABILITY

Read the entire Directions for Use, Conditions, Limit of Warranties and Liabilities before using this product. If terms are not acceptable, return the unopened product at once for a refund of the purchase price.

By using this product, user or buyer accepts the following Conditions, Disclaimer of Warranties, and Limitations of Liability. These terms may only be modified by a written document signed by a duly authorized representative of Elemental Enzymes Ag & Turf, LLC.

CONDITIONS: The directions for use of this product are believed to be adequate and must be followed carefully. However, it is impossible to eliminate all risks associated with the use of this product. Crop injury, ineffectiveness or other unintended consequences may result because of such factors as weather conditions, presence of other materials, or the manner of use or application, all of which are beyond the control of Elemental Enzymes Ag & Turf, LLC. To the extent consistent with applicable law, all such risks shall be assumed by the user or buyer.

LIMIT OF WARRANTY AND LIABILITY: TO THE EXTENT CONSISTENT WITH APPLICABLE LAW, ELEMENTAL ENZYMES AG & TURF, LLC WARRANTS THAT THE PRODUCT CONFORMS TO THE CHEMICAL DESCRIPTION ON THE LABEL AND IS REASONABLY FIT FOR THE PURPOSES STATED ON THE LABEL WHEN USED IN ACCORDANCE WITH THE DIRECTIONS UNDER NORMAL CONDITIONS OF USE. NO OTHER EXPRESS WARRANTY OR IMPLIED WARRANTY OF FITNESS FOR PARTICULAR PURPOSE OR MERCHANTABILITY IS MADE. THE EXCLUSIVE REMEDY OF THE USER OR BUYER AND THE LIMIT OF THE LIABILITY OF THIS COMPANY OF ANY OTHER SELLER FOR ANY AND ALL LOSSES, INJURIES OR DAMAGES RESULTING FROM THE USE OR HANDLING OF THIS PRODUCT SHALL BE THE PURCHASE PRICE PAID BY THE USER OR BUYER FOR THE QUANTITY OF THIS PRODUCT INVOLVED. IN NO EVENT WILL THE COMPANY BE LIABLE FOR CONSEQUENTIAL, SPECIAL, OR INDIRECT DAMAGES RESULTING FROM THE USE OR HANDLING OF THIS PRODUCT.

U.S Patent 10,717,767

[Note to reviewer: Any of the below graphics may appear anywhere on the label. Further, any of the below graphics may appear in various colors or black/white; not to impact legibility.]

