



U.S. ENVIRONMENTAL PROTECTION AGENCY
Office of Pesticide Programs
Registration Division (7505P)
1200 Pennsylvania Ave., N.W.
Washington, D.C. 20460-0001

EPA Reg. Number:

91720-1

Date of Issuance:

07/13/2017

NOTICE OF PESTICIDE:

Registration
 Reregistration
(under FIFRA, as amended)

Term of Issuance:

Conditional

Name of Pesticide Product:

IN2MIX®

Name and Address of Registrant (include ZIP Code):

Mrs. Jane M. Miller
Agent for In2Care BV
c/o Biologic Consulting, Inc.
115 Obtuse Hill Road
Brookfield, CT 06804-3223

Note: Changes in labeling differing in substance from that accepted in connection with this registration must be submitted to and accepted by the Registration Division prior to use of the label in commerce. In any correspondence on this product always refer to the above EPA registration number.

On the basis of information furnished by the registrant, the above named pesticide is hereby registered under the Federal Insecticide, Fungicide and Rodenticide Act.

Registration is in no way to be construed as an endorsement or recommendation of this product by the Agency. In order to protect health and the environment, the Administrator, on his motion, may at any time suspend or cancel the registration of a pesticide in accordance with the Act. The acceptance of any name in connection with the registration of a product under this Act is not to be construed as giving the registrant a right to exclusive use of the name or to its use if it has been covered by others.

This product is conditionally registered in accordance with FIFRA section 3(c)(7)(B). You must comply with the following conditions:

1. Submit and/or cite all data required for registration/reregistration/registration review of your product under FIFRA when the Agency requires all registrants of similar products to submit such data.

Signature of Approving Official:

Richard Gebken, Product Manager 10
Invertebrate & Vertebrate Branch 2
Registration Division (7505P)
Office of Pesticide Programs

Date:

07/13/2017

2. You are required to comply with the data requirements described in the DCI or EDSP Order identified below:
 - a. Pyriproxyfen GDCI-129032-1299
 - b. Pyriproxyfen EDSP-129032-186
 - c. Pyriproxyfen EDSP-129032-187

You must comply with all of the data requirements within the established deadlines. If you have questions about the Generic DCI or EDSP Order listed above, you may contact the Chemical Review Manager in the Pesticide Reevaluation Division:

http://www.epa.gov/oppsrrd1/contacts_prd.htm

3. Be aware that proposed data requirements have been identified in a Work Plan or proposed DCI. For more information on these proposed data requirements, you may contact the Chemical Review Manager in the Pesticide Reevaluation Division:
http://www.epa.gov/oppsrrd1/contacts_prd.htm
4. The data requirements for storage stability and corrosion characteristics (Guidelines 830.6317 and 830.6320) are not satisfied. A one year study is required to satisfy these data requirements. You have 18 months from the date of registration to provide these data.
5. Make the following label changes before you release the product for shipment:
 - Revise the EPA Registration Number to read, “EPA Reg. No. 91720-1.”
6. Submit one copy of the final printed label for the record before you release the product for shipment.

Should you wish to add/retain a reference to the company’s website on your label, then please be aware that the website becomes labeling under the Federal Insecticide Fungicide and Rodenticide Act and is subject to review by the Agency. If the website is false or misleading, the product would be misbranded and unlawful to sell or distribute under FIFRA section 12(a)(1)(E). 40 CFR 156.10(a)(5) list examples of statements EPA may consider false or misleading. In addition, regardless of whether a website is referenced on your product’s label, claims made on the website may not substantially differ from those claims approved through the registration process. Therefore, should the Agency find or if it is brought to our attention that a website contains false or misleading statements or claims substantially differing from the EPA approved registration, the website will be referred to the EPA’s Office of Enforcement and Compliance.

If you fail to satisfy these data requirements, EPA will consider appropriate regulatory action including, among other things, cancellation under FIFRA section 6(e). Your release for shipment of the product constitutes acceptance of these conditions. A stamped copy of the label is enclosed for your records. Please also note that the record for this product currently contains the following CSFs:

- Basic CSF dated 01/17/2016

- Alternate CSF dated 01/17/2016

If you have any questions, please contact Mr. Carmen J. Rodia, Jr. by phone at (703) 306-0327, or via email at Rodia.Carmen@epa.gov.

Sincerely,



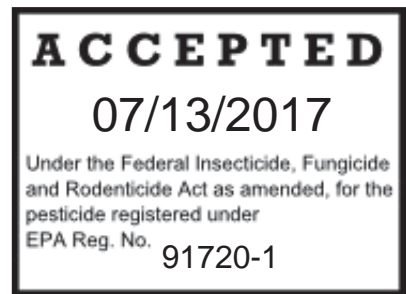
Richard Gebken
Product Manager 10
Invertebrate & Vertebrate Branch 2
Registration Division (7505P)
Office of Pesticide Programs

*Enclosures: Master Label Stamped "Accepted," dated 07/13/2017
Acute Toxicity Review, dated 06/08/2017
Efficacy Review #1, dated 05/15/2017
Efficacy Review #2, dated 06/22/2017
EFED Risk Assessment, dated 04/13/2017
HED Risk Assessment, dated 05/18/2017
Product Chemistry Review, dated 06/02/2017*

MASTER LABEL

Bracketed [] text is optional

Outer Bag Labeling -



IN2MIX®

Refills for Use in the IN2CARE® Trap

THIS PRODUCT IS NOT FOR RETAIL SALE.

For use to control *Aedes* species of Mosquitoes that may transmit Zika, Chikungunya, and Dengue Fever

Active Ingredients:	% w/w
Pyriproxyfen (CAS No. 95737-68-1).....	74.03%
<i>Beauveria bassiana</i> strain GHA* (CAS No. 63428-82-0).....	10.00%
Other Ingredients:	<u>15.97%</u>
Total	100.00%

* Contains not less than 4.5 X 10⁹ viable spores/gm.

KEEP OUT OF REACH OF CHILDREN

CAUTION

READ ALL LABEL DIRECTIONS COMPLETELY BEFORE USE

FIRST AID	
If Inhaled	Move person to fresh air. If person is not breathing, call 911 or an ambulance, then give artificial respiration, preferably by mouth-to-mouth, if possible. Call a poison control center or doctor for further treatment advice.
If Swallowed	Call a poison control center or doctor immediately for treatment advice. Have a person sip a glass of water if able to swallow. Do not induce vomiting unless told to do so by the poison control center or doctor. Do not give anything by mouth to an unconscious person.
If on Skin	Take off contaminated clothing. Rinse skin immediately with plenty of water for 15-20 minutes. Call a poison control center or doctor for treatment advice.
If in Eyes	Hold eye open and rinse slowly and gently with water for 15-20 minutes. Remove contact lenses, if present, after the first 5 minutes, then continue rinsing eye. Call a poison control center or doctor for treatment advice.
HOT LINE NUMBER	
Have the product container or label with you when calling a poison control center or doctor or going for treatment. For additional information on this pesticide product (including health concerns, medical emergencies or pesticide incidents), you may call the National Pesticide Information Center at 1-800-858-7378, from 8:00 a.m. to 12:00 p.m. PST, Monday through Friday. After 12:00 p.m. PST on weekdays, and during the weekend, you may call the poison control center at 1-800-222-1222.	

Net Weight: 50 g (1.76 ounces)
100 refills x 0.5g each (0.018 ounces)

PRECAUTIONARY STATEMENTS

HAZARD TO HUMAN AND DOMESTIC ANIMALS

Harmful if inhaled, swallowed, or absorbed through skin. Causes moderate eye irritation. Avoid breathing dust. Avoid contact with skin, eyes or clothing. Wash hands thoroughly with soap and water after handling and before eating, drinking, chewing gum, using tobacco or using the toilet. Repeated exposure to high concentrations of microbial proteins can cause allergic sensitization. Prolonged or frequently repeated skin contact may cause allergic reactions in some individuals. Remove and wash contaminated clothing before reuse. Obtain medical attention if irritation persists. Avoid contamination of food or feedstuffs.

PERSONAL PROTECTIVE EQUIPMENT (PPE)

All applicators and handlers must wear:

- Long-sleeved shirt and long pants;
- Waterproof gloves; and
- Shoes plus socks

Follow the manufacturer's instructions for cleaning/maintaining PPE. If no such instructions for washables exist, use detergent and hot water. Keep and wash PPE separately from other laundry.

In addition, all applicators and handlers must wear a NIOSH-approved particulate respirator with any N, R, or P filter (NIOSH approval number prefix TC-84A); or a NIOSH-approved powered air purifying respirator with an HE filter (NIOSH approval number prefix TC-21C).

USER SAFETY RECOMMENDATIONS

Users should:

- Wash hands before eating, drinking, chewing gum, using tobacco, or using the toilet.
- Remove clothing/PPE immediately if pesticide gets inside. Then wash thoroughly and put on clean clothing.
- Remove PPE immediately after handling this product. Wash the outside of gloves before removing. As soon as possible, wash thoroughly and change into clean clothing.

ENVIRONMENTAL HAZARDS

This product is toxic to fish and aquatic invertebrates. Do not apply directly to areas where surface water is present or to intertidal areas below the mean high water mark. Do not contaminate water by cleaning of equipment or disposal of equipment wash-waters. Application of this product is prohibited directly into sewers or drains, or to any area like a gutter where drainage to storm sewers, water bodies, or aquatic habitat can occur. Do not allow the product to enter any drain during or after application.

This product is highly toxic, and may be pathogenic to bees exposed to direct treatment on blooming crops or weeds. Do not apply this product or allow it to drift to blooming crops or weeds while bees are actively visiting the treatment area.

STORAGE AND DISPOSAL

Do not contaminate water, food, or feed by storage or disposal.

PESTICIDE STORAGE: Keep this product in its tightly closed original container when not in use. Store in a cool, dry, well-ventilated (preferably locked) area that is inaccessible to children and animals. Store this product in a place away from strong bases, strong acids, sources of ignition and direct sunlight.

PESTICIDE DISPOSAL: For waste materials following 4-week treatment interval (e.g., disposal of used netting with actives/used water with attractants at time of IN2MIX® refill replacement): Dispose of used netting in a sanitary landfill, or by other procedures approved by state and local authorities. Dispose of used water with attractants by pouring out of IN2CARE® trap onto the ground, and not near a water source. Prevent entry of used water into sewers, gutters, or drains, or any area where drainage to storm sewers, water bodies, or aquatic habitat can occur. Notify authorities if liquid enters sewers or public waters.

CONTAINER HANDLING: Shake unopened IN2MIX® packet to assure that actives stick to netting. Open packet and place one IN2MIX® pesticide-treated netting on the floater. Completely empty remaining contents (powder and odor tablets) into IN2CARE® trap by shaking and tapping sides and bottom to loosen clinging particles. When completely empty, dispose of empty packets in trash or in a sanitary landfill, or by other procedures approved by state and local authorities.

DIRECTIONS FOR USE

It is a violation of Federal law to use this product in a manner inconsistent with its labeling.

READ ALL LABEL DIRECTIONS COMPLETELY BEFORE USE

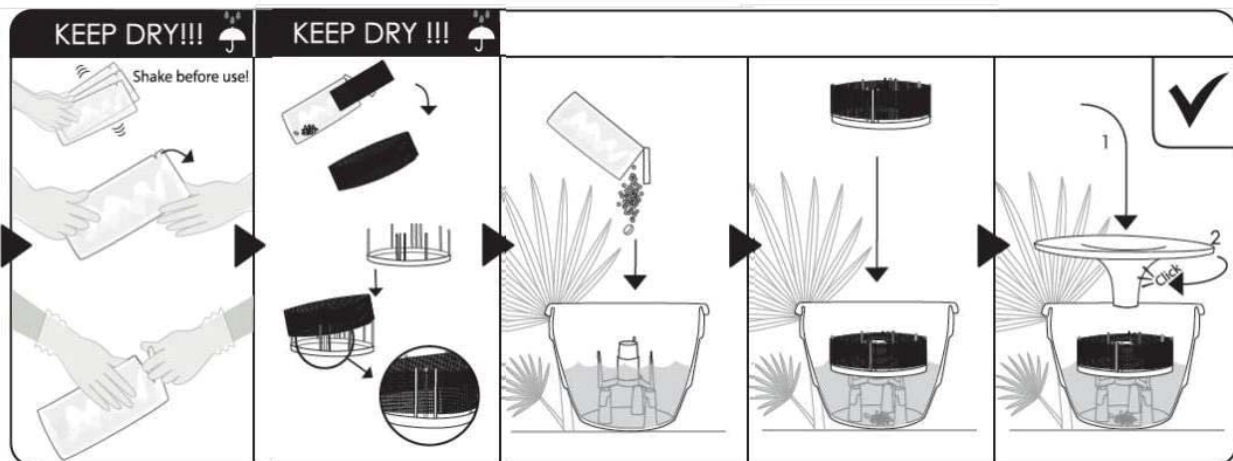
FOR OUTDOOR USE ONLY

ASSEMBLY

Assemble the plastic IN2CARE® trap as directed in the enclosed user manual. Fill the base with 4 to 5 quarts (3.5–4.5 liters) of clean tap water. Place one IN2MIX® pesticide-treated netting on the floater [as indicated below]. Empty the remaining contents (powder and odor tablets) of the packet into the water.

Use one IN2MIX® packet per trap every 4 weeks when adult mosquitoes are active. DO NOT allow people or pets to contact the pesticide.

[Optional picture and text -



MASTER LABEL

[PLACEMENT

Place the activated IN2CARE® trap outside on the ground in a level, shaded location. Avoid locations with continuous direct sunlight. For optimal coverage, place at least 1 trap every 4,300 sq. feet (400 sq. meters), or at least 10 traps per acre. Do not exceed 15 traps per acre.]

[TO REFILL

Re-visit each IN2CARE® trap every 4 weeks. Remove the lid and take out the floater. Dispose of the waste materials (netting and water) as indicated in the Storage and Disposal section of this label. Refill with 4 to 5 quarts (3.5 – 4.5 liters) of clean tap water. Take a new IN2MIX® refill packet and repeat the assembly steps as described [in the User Manual] [above].]

[HOW IT WORKS

IN2MIX® slowly kills adult *Aedes* spp. mosquitoes. Therefore, dead adult mosquitoes may not be found in the trap.

The *Aedes* spp. larvae that emerge from eggs laid inside the trap are killed by the growth regulator prior to transforming into adults. This means that it is normal to see small living larvae in the trap that will eventually die.

After laying eggs, the adult female should be contaminated with a growth regulator and slow acting adulticide so she can carry the growth regulator to other nearby breeding sites and should die within a few days following exposure to the adulticide.

For best results, remove/empty artificial water containers (e.g., flower pots, plastic cups, car tires, etc.) that serve as other breeding sites, and use a registered mosquito larvicide to treat breeding sites that cannot be removed or emptied.

Aedes spp. mosquitoes can have very specific breeding preferences within certain locations. Check for the presence of live and dead mosquito larvae inside the traps every 4 weeks. When a trap continuously has zero or much fewer larvae when compared to other nearby traps, the unattractive trap should be relocated to another nearby shaded location.

NOTICE: Buyer and user assume all risks and liability of use, storage and/or handling of this product not in accordance with the terms of this label.

BUYER GUARANTEE LIMITED TO LABEL CLAIMS

Manufactured by:
In2Care BV
Marijkeweg 22, 6709 PG,
Wageningen,
The Netherlands

EPA Reg. No.: 91720-XX
EPA Est. No.: XXXXX-XX-XXX

Individual refill packets labeling -

IN2MIX®

Active Ingredients:	% w/w
Pyriproxyfen (CAS No. 95737-68-1).....	74.03%
<i>Beauveria bassiana</i> strain GHA* (CAS No. 63428-82-0).....	10.00%
Other Ingredients:	<u>15.97%</u>
Total	100.00%

* Contains not less than 4.5×10^9 viable spores/gm.

KEEP OUT OF REACH OF CHILDREN

CAUTION

READ ENCLOSED MANUAL FOR COMPLETE DIRECTIONS FOR USE

FIRST AID

If Inhaled: Move person to fresh air. If person is not breathing, call 911 or an ambulance, then give artificial respiration, preferably by mouth-to-mouth, if possible. Call a poison control center or doctor for further treatment advice.

If Swallowed: Call a poison control center or doctor immediately for treatment advice. Have a person sip a glass of water if able to swallow. Do not induce vomiting unless told to do so by the poison control center or doctor. Do not give anything by mouth to an unconscious person.

If on Skin: Take off contaminated clothing. Rinse skin immediately with plenty of water for 15-20 minutes. Call a poison control center or doctor for treatment advice.

If in Eyes: Hold eye open and rinse slowly and gently with water for 15-20 minutes. Remove contact lenses, if present, after the first 5 minutes, then continue rinsing eye. Call a poison control center or doctor for treatment advice.

HOT LINE NUMBER

Have the product container or label with you when calling a poison control center or doctor or going for treatment. For additional information on this pesticide product (including health concerns, medical emergencies or pesticide incidents), you may call the National Pesticide Information Center at 1-800-858-7378, from 8:00 a.m. to 12:00 p.m. Pacific Time, Monday through Friday. After 12:00 p.m. Pacific Time on weekdays, and during the weekend, call the poison control center at 1-800-222-1222.

EPA Reg. No. 91720-XX

EPA Est. No.: XXXXX-XX-XXX

Net Weight: 0.5g (0.018 ounces)

Manufactured by:
In2Care BV
Marijkeweg 22, 6709 PG,
Wageningen,
The Netherlands

MASTER LABEL

PRECAUTIONARY STATEMENTS

HAZARD TO HUMAN AND DOMESTIC ANIMALS

Harmful if inhaled, swallowed, or absorbed through skin. Causes moderate eye irritation. Avoid breathing dust. Avoid contact with skin, eyes or clothing. Wash hands thoroughly with soap and water after handling and before eating, drinking, chewing gum, using tobacco or using the toilet. Repeated exposure to high concentrations of microbial proteins can cause allergic sensitization. Prolonged or frequently repeated skin contact may cause allergic reactions in some individuals. Remove and wash contaminated clothing before reuse. Obtain medical attention if irritation persists. Avoid contamination of food or feedstuffs.

PERSONAL PROTECTIVE EQUIPMENT (PPE)

All applicators and handlers must wear: Long-sleeved shirt and long pants; Waterproof gloves; and Shoes plus socks.

Follow the manufacturer's instructions for cleaning/maintaining PPE. If no such instructions for washables exist, use detergent and hot water. Keep and wash PPE separately from other laundry.

In addition, all applicators and handlers must wear a NIOSH-approved particulate respirator with any N, R, or P filter (NIOSH approval number prefix TC-84A); or a NIOSH-approved powered air purifying respirator with an HE filter (NIOSH approval number prefix TC-21C).

USER SAFETY RECOMMENDATIONS

Users should:

- Wash hands before eating, drinking, chewing gum, using tobacco, or using the toilet.
- Remove clothing/PPE immediately if pesticide gets inside. Then wash thoroughly and put on clean clothing.
- Remove PPE immediately after handling this product. Wash the outside of gloves before removing. As soon as possible, wash thoroughly and change into clean clothing.

ENVIRONMENTAL HAZARDS

This product is toxic to fish and aquatic invertebrates. Do not apply directly to areas where surface water is present or to intertidal areas below the mean high water mark. Do not contaminate water by cleaning of equipment or disposal of equipment wash-waters. Application of this product is prohibited directly into sewers or drains, or to any area like a gutter where drainage to storm sewers, water bodies, or aquatic habitat can occur. Do not allow the product to enter any drain during or after application.

This product is highly toxic, and may be pathogenic to bees exposed to direct treatment on blooming crops or weeds. Do not apply this product or allow it to drift to blooming crops or weeds while bees are actively visiting the treatment area.

STORAGE AND DISPOSAL

Do not contaminate water, food, or feed by storage or disposal.

PESTICIDE STORAGE: Keep this product in its tightly closed original container when not in use. Store in a cool, dry, well-ventilated (preferably locked) area that is inaccessible to children and animals. Store this product in a place away from strong bases, strong acids, sources of ignition and direct sunlight.

PESTICIDE DISPOSAL: For waste materials following 4-week treatment interval (e.g., disposal of used netting with actives/used water with attractants at time of IN2MIX® refill replacement): Dispose of used netting in a sanitary landfill, or by other procedures approved by state and local authorities. Dispose of used water with attractants by pouring out of IN2CARE® trap onto the ground, and not near a water source. Prevent entry of used water into sewers, gutters, or drains, or any area where drainage to storm sewers, water bodies, or aquatic habitat can occur. Notify authorities if liquid enters sewers or public waters.

CONTAINER HANDLING: Shake unopened IN2MIX® packet to assure that actives stick to netting. Open packet and place one IN2MIX® pesticide-treated netting on the floater. Completely empty remaining contents (powder and odor tablets) into IN2CARE® trap by shaking and tapping sides and bottom to loosen clinging particles. When completely empty, dispose of empty packets in trash or in a sanitary landfill, or by other procedures approved by state and local authorities.