



OFFICE OF CHEMICAL SAFETY AND POLLUTION PREVENTION

WASHINGTON, D.C. 20460

July 22, 2024

Grace Rapai
Regulatory Specialist III
CAP IM Supply, Inc.
2825 East Cottonwood Pkwy Ste 500
Salt Lake City, UT 84121

Subject: Label Amendment – Added Neopac tube child resistant packaging (CRP)
instructions to label
Product Name: T2.200 for Dogs
EPA Registration Number: 91384-3
Application Date: 07/28/2020
Case Number: 478218

Dear Grace Rapai:

The amended label referred to above, submitted in connection with registration under the Federal Insecticide, Fungicide, and Rodenticide Act (FIFRA), as amended, is acceptable. This approval does not affect any conditions that were previously imposed on this registration. You continue to be subject to existing conditions on your registration and any deadlines connected with them.

A stamped copy of your labeling is enclosed for your records. This labeling supersedes all previously accepted labeling. The next label printing of this product must use this labeling unless subsequent changes have been approved. You must submit one copy of the final printed labeling before you release the product for shipment with the new labeling. In accordance with 40 CFR 152.130(c), you may distribute or sell this product under the previously approved labeling for 18 months from the date of this letter. After 18 months, you may only distribute or sell this product if it bears this new revised labeling or subsequently approved labeling. "To distribute or sell" is defined under FIFRA section 2(gg) and its implementing regulation at 40 CFR 152.3.

Should you wish to add/retain a reference to the company's website on your label, then please be aware that the website becomes labeling under FIFRA and is subject to review by the Agency. If the website is false or misleading, the product would be misbranded and unlawful to sell or distribute under FIFRA section 12(a)(1)(E). 40 CFR 156.10(a)(5) lists examples of statements EPA may consider false or misleading. In addition, regardless of whether a website

is referenced on your product's label, claims made on the website may not substantially differ from those claims approved through the registration process. Therefore, should the Agency find or if it is brought to our attention that a website contains false or misleading statements or claims substantially differing from the EPA approved registration, the website will be referred to the EPA's Office of Enforcement and Compliance.

Your release for shipment of the product constitutes acceptance of these conditions. If these conditions are not complied with, the registration will be subject to cancellation in accordance with FIFRA section 6.

If you have any questions, you may contact Robert Mitchell at 202-566-2842 or via email at mitchell.robert@epa.gov.

Sincerely,

A handwritten signature in black ink, appearing to read "Elizabeth Fertich", written in a cursive style.

Elizabeth Fertich
Product Manager 4
Invertebrate-Vertebrate Branch 1
Registration Division
Office of Pesticide Programs

Enclosure

T2.200 for Dogs
EPA Reg. No. 91384-3

ACCEPTED

07/22/2024

Under the Federal Insecticide, Fungicide
and Rodenticide Act as amended, for the
pesticide registered under
EPA Reg. No. 91384-3

{NOTE TO REVIEWER: Optional text appears in brackets: [] - the final label may include some or all of the optional text on front, back, side, or inside label panels. { } are for notes to reviewer and text location/positioning.}

This product has four alternative Child Resistant Packaging types: 1) applicator without an outer blister pack, 2) blister pack containing an applicator, 3) short or long screw top tube, and 4) Neopac tube. Cartons have the option of containing a foil pouch. When the foil pouch is included, the CR package, insert, and reminder stickers will be placed inside the pouch.}

{Label Directions and Container (Carton, Overwrap of 2 x 1-Count, 2 x 2-Count, 2 x 3-Count, 2 x 4-Count, 2 x 6-Count, and 3 x 4-Count Cartons), Package Insert, Individual Applicator/Tube, and Reminder Stickers}

ONE CARTON; TWO CARTONS WITH OVERWRAP:

Small dog: 1 x 0.014 FL. OZ. PACKAGE {only for short screw top tube or short Neopac tube}
Medium dog: 1 x 0.034 FL. OZ. PACKAGE {only for short screw top tube or short Neopac tube}
Large dog: 1 x 0.084 FL. OZ. PACKAGE {only for long screw top tube or short Neopac tube}
X-Large dog: 1 x 0.135 FL. OZ. PACKAGE {only for long screw top tube or short Neopac tube}

ONE CARTON; TWO CARTONS WITH OVERWRAP:

Small dog: 2 x 0.014 FL. OZ. PACKAGE {for 2-count blister pack containing an applicator; 2-count short screw top tube; 2-count short Neopac tube}
Medium dog: 2 x 0.034 FL. OZ. PACKAGE {for 2-count blister pack containing an applicator; 2-count short screw top tube; 2-count short Neopac tube}
Large dog: 2 x 0.084 FL. OZ. PACKAGE {for 2-count blister pack containing an applicator; 2-count long screw top tube; 2-count short Neopac tube}
X-Large dog: 2 x 0.135 FL. OZ. PACKAGE {for 2-count blister pack containing an applicator; 2-count long screw top tube; 2-count Neopac tube}

ONE CARTON; TWO CARTONS WITH OVERWRAP:

Small dog: 3 x 0.014 FL. OZ. PACKAGE {for 3-count applicator strip with no outer blister; 3-count blister pack containing an applicator; 3-count short screw top tube; 3-count short Neopac tube}
Medium dog: 3 x 0.034 FL. OZ. PACKAGE {for 3-count applicator strip with no outer blister; 3-count blister pack containing an applicator; 3-count short screw top tube; 3-count short Neopac tube}
Large dog: 3 x 0.084 FL. OZ. PACKAGE {for 3-count applicator strip with no outer blister; 3-count blister pack containing an applicator; 3-count long screw top tube; 3-count long Neopac tube}
X-Large dog: 3 x 0.135 FL. OZ. PACKAGE {for 3-count applicator strip with no outer blister; 3-count blister pack containing an applicator; 3-count long screw top tube; 3-count long Neopac tube}

ONE CARTON; TWO OR THREE CARTONS WITH OVERWRAP:

Small dog: 4 x 0.014 FL. OZ. PACKAGE {for 4-count applicator strip with no outer blister; two 2-count blister packs containing an applicator; 4-count short screw top tube; 4-count short Neopac tube}
Medium dog: 4 x 0.034 FL. OZ. PACKAGE {for 4-count applicator strip with no outer blister; two 2-count blister packs containing an applicator; 4-count short screw top tube; 4-count short Neopac tube}
Large dog: 4 x 0.084 FL. OZ. PACKAGE {for 4-count applicator strip with no outer blister; two 2-count blister packs containing an applicator; 4-count long screw top tube; 4-count long Neopac tube}
X-Large dog: 4 x 0.135 FL. OZ. PACKAGE {for 4-count applicator strip with no outer blister; two 2-count blister packs containing an applicator; 4-count long screw top tube; 4-count long Neopac tube}

ONE CARTON; TWO CARTONS WITH OVERWRAP:

Small dog: 6 x 0.014 FL. OZ. PACKAGE {for two 3-count applicator strips with no outer blister; two 3-count blister packs containing an applicator; 6-count short screw top tube; 6-count short Neopac tube}

Medium dog: 6 x 0.034 FL. OZ. PACKAGE {for two 3-count applicator strips with no outer blister; two 3-count blister packs containing an applicator; 6-count short screw top tube; 6-count short Neopac tube}

Large dog: 6 x 0.084 FL. OZ. PACKAGE {for two 3-count applicator strips with no outer blister; two 3-count blister packs containing an applicator; 6-count long screw top tube; 6-count long Neopac tube}

X-Large dog: 6 x 0.135 FL. OZ. PACKAGE {for two 3-count applicator strips with no outer blister; two 3-count blister packs containing an applicator; 6-count long screw top tube; 6-count long Neopac tube}

ONE CARTON:

Small dog: 8 x 0.014 FL. OZ. PACKAGE {for two 4-count applicator strips with no outer blister; 8-count short screw top tube; 8-count short Neopac tube}

Medium dog: 8 x 0.034 FL. OZ. PACKAGE {for two 4-count applicator strips with no outer blister; 8-count short screw top tube; 8-count short Neopac tube}

Large dog: 8 x 0.084 FL. OZ. PACKAGE {for two 4-count applicator strips with no outer blister; 8-count long screw top tube; 8-count long Neopac tube}

X-Large dog: 8 x 0.135 FL. OZ. PACKAGE {for two 4-count applicator strips with no outer blister; 8-count long screw top tube; 8-count long Neopac tube}

**{FRONT PANEL OF OVERWRAP FOR 2 AND 3-CARTON PACKAGES IN CRP DESCRIBED ON PAGE 1:
2 X 1-COUNT, 2 X 2-COUNT, 2 X 3-COUNT, 2 X 4-COUNT, 2 X 6-COUNT, AND 3 X 4-COUNT}**

[T2.200 for Dogs]

{Alternate Brand Names are listed at the end of this draft label. The words “for Dogs” is included in each product name and will be at least 75% of the height of the largest letter in the product name. A large clear picture of a dog in the weight range of the product as packaged will be on the front panel. Pictures of dogs in each weight range that will appear on label can be found on page 24}

Monthly topical treatment and prevention of ticks, fleas, mosquitos, biting flies, and lice.
{The following “FOR USE ONLY” restriction will appear in a box prominently on the front panel of the overwrap, per section III.A.1.b. of the September 30, 2011 EPA letter to registrants}

FOR USE ONLY ON DOGS AND PUPPIES 7 WEEKS AND OLDER AND WEIGHING [5-10 LBS.][SMALL DOGS] [11-20 LBS.][MEDIUM DOGS] [21-55 LBS.][LARGE DOGS] [OVER 55 LBS.][X-LARGE DOGS]
--

KEEP OUT OF REACH OF CHILDREN {font size will comply with 40 CFR 156.60(b)}

WARNING {font size will comply with 40 CFR 156.60(b)}

	%
Active Ingredients	<u>By Weight</u>
Imidacloprid	8.80%
Permethrin*	44.00%
Pyriproxyfen	0.44%
Other Ingredients	46.76%
Total	100.00%

*cis/trans ratio: Max 55(±) cis and min 45%(±) trans

See back panel for Precautionary Statements and First Aid information.

See package insert for Directions for Use and Storage and Disposal.

DO NOT USE ON CATS

{A 1.5 CM X 1.5 CM CAT PROHIBITION ICON WILL BE IN THE LOWER RIGHT HAND CORNER OF THE FRONT PANEL IN YELLOW WITH BLACK IMAGE}

Net Contents:

{In the following statement the bracketed “s” and “each” will be used for all counts of applicators or tubes except 1}

[2 cartons each containing [1][2][3][4][6] [applicator][tube][s], [each] 0.014 fl. oz. (0.4mL)]

[2 cartons each containing [1][2][3][4][6] [applicator][tube][s], [each] 0.034 fl. oz. (1.0 mL)]

[2 cartons each containing [1][2][3][4][6] [applicator][tube][s], [each] 0.084 fl. oz. (2.5 mL)]

[2 cartons each containing [1][2][3][4][6] [applicator][tube][s], [each] 0.135 fl. oz. (4.0 mL)]

[3 cartons each containing 4 [applicators][tubes], each 0.014 fl. oz. (0.4 mL)]

[3 cartons each containing 4 [applicators][tubes], each 0.034 fl. oz. (1.0 mL)]

[3 cartons each containing 4 [applicators][tubes], each 0.084 fl. oz. (2.5 mL)]

[3 cartons each containing 4 [applicators][tubes], each 0.135 fl. oz. (4.0 mL)]

{FRONT PANEL OF CARTON}

[T2.200 for Dogs]

{Alternate Brand Names are listed at the end of this draft label. The words “for Dogs” is included in each product name and will be at least 75% of the height of the largest letter in the product name. A large clear picture of a dog in the weight range of the product as packaged will be on the front panel. Pictures of dogs in each weight range that will appear on label can be found on page 24}

Monthly topical treatment and prevention of ticks, fleas, mosquitos, biting flies, and lice.
{The following “FOR USE ONLY” restriction will appear in a box prominently on the front panel of the carton, per section III.A.1.b. of the September 30, 2011 EPA letter to registrants}

FOR USE **ONLY** ON DOGS AND PUPPIES 7 WEEKS AND OLDER AND WEIGHING [5-10 LBS.][**SMALL DOGS**] [11-20 LBS.][**MEDIUM DOGS**] [21-55 LBS.][**LARGE DOGS**] [OVER 55 LBS.][**X-LARGE DOGS**]

KEEP OUT OF REACH OF CHILDREN {font size will comply with 40 CFR 156.60(b)}

WARNING {font size will comply with 40 CFR 156.60(b)}

	%
Active Ingredients	By Weight
Imidacloprid	8.80%
Permethrin*	44.00%
Pyriproxyfen	0.44%
Other Ingredients	46.76%
Total	100.00%

*cis/trans ratio: Max 55(±) cis and min 45%(±) trans

See back panel for Precautionary Statements and First Aid information.

See package insert for Directions for Use and Storage and Disposal.

DO NOT USE ON CATS

{A 1.5 CM X 1.5 CM CAT PROHIBITION ICON WILL BE IN THE LOWER RIGHT HAND CORNER OF THE FRONT PANEL IN YELLOW WITH BLACK IMAGES}



Net Contents:

{In the following statement, the “s” and “each” will be used for all counts of applicators or tubes except 1}

[1][2][3][4][6][8] [applicator][tube][s], [each] 0.014 fl. oz. (0.4 mL)

[1][2][3][4][6][8] [applicator][tube][s], [each] 0.034 fl. oz. (1.0 mL)

[1][2][3][4][6][8] [applicator][tube][s], [each] 0.084 fl. oz. (2.5 mL)

[1][2][3][4][6][8] [applicator][tube][s], [each] 0.135 fl. oz. (4.0 mL)

T2.200 for Dogs
EPA Reg. No. 91384-3
July 8, 2024

{BACK PANEL OF CARTON AND OF OVERWRAP FOR 2 AND 3 CARTON PACKAGES IN CRP DESCRIBED ON PAGE 1:
2 X 1-COUNT, 2 X 2-COUNT, 2 X 3-COUNT, 2 X 4-COUNT, 2 X 6-COUNT, AND 3 X 4-COUNT
SEE PAGE 1 FOR CRP OPTIONS}

[T2.200 for Dogs]

{The following overall claim statement can appear either here or immediately after the “READ THE ENTIRE LABEL...” statement.}
Monthly Topical Treatment and Prevention of Ticks, Fleas, Mosquitos, Biting Flies, and Lice [on Dogs].

{The following “FOR USE ONLY” restriction is optional on the back panel of the carton and overwrap}
[FOR USE **ONLY** ON DOGS AND PUPPIES 7 WEEKS AND OLDER AND WEIGHING [5-10 LBS.][**SMALL DOGS**] [11-20 LBS.][**MEDIUM DOGS**] [21-55 LBS.][**LARGE DOGS**] [OVER 55 LBS.][**X-LARGE DOGS**]

READ THE ENTIRE LABEL BEFORE EACH USE

PRECAUTIONARY STATEMENTS

HAZARDS TO HUMANS

WARNING. Causes substantial but temporary eye injury. Do not get in eyes or on clothing. Harmful if swallowed. Prolonged or frequently repeated skin contact may cause allergic reactions in some individuals. Wash thoroughly with soap and water after handling and before eating, drinking, chewing gum, using tobacco or using the toilet. Remove and wash contaminated clothing before reuse.

HAZARDS TO DOMESTIC ANIMALS

For external use on dogs only. Do not use on animals other than dogs. Do not use on dogs or puppies under seven (7) weeks of age or weighing less than [insert lowest weight of weight class] pounds. Do not get this product in dog’s eyes or mouth. As with any product, consult your veterinarian before using this product on debilitated, aged, pregnant or nursing dogs. Individual sensitivities may occur after using ANY pesticide product for dogs. If signs persist, or become more severe, consult a veterinarian immediately. This product does not substitute for prescribed heartworm preventative. If your dog is on medication, consult your veterinarian before using this or any other product.

ENVIRONMENTAL HAZARDS

This pesticide is extremely toxic to aquatic organisms, including fish and invertebrates. Do not add directly to water. Do not contaminate water when disposing of product or packaging.

FIRST AID	
If In Eyes:	<ul style="list-style-type: none">• Hold eye open and rinse slowly and gently with water for 15-20 minutes. Remove contact lenses, if present, after the first 5 minutes, then continue rinsing eye.• Call a poison control center or doctor for treatment advice.
If Swallowed:	<ul style="list-style-type: none">• Call a poison control center or doctor immediately for treatment advice.• Have person sip a glass of water if able to swallow.• Do not induce vomiting unless told to do so by the poison control center or doctor.• Do not give anything by mouth to an unconscious person.
HOT LINE NUMBER	
Have the product container or label with you when calling a poison control center or doctor, or going for treatment. For medical emergencies call 1-800-498-5743. For consumer questions, call 1-888-261-4657.	
NOTE TO PHYSICIAN	
Treat the patient symptomatically.	

Side Effects:

T2.200 for Dogs

EPA Reg. No. 91384-3

July 8, 2024

Monitor your dog after application. Side effects may include signs of skin irritation such as redness, scratching, or other signs of discomfort. Gastrointestinal signs such as vomiting or diarrhea have also been reported. If these or other side effects (such as lethargy or agitation) occur, consult your veterinarian or call 1-800-498-5743.

{The side effects box will be located immediately above the cat warning box.}

{A 1.5 cm x 1.5 cm cat prohibition icon and warning text in a box will be located at the lower right hand corner of the back panel in yellow with black images.}

DO NOT USE ON CATS – MAY BE FATAL. Keep cats away from treated dogs for 24 hours. If applied to a cat or ingested by a cat, contact your veterinarian immediately.



For consumer questions call 1-888-261-4657

For medical emergencies call 1-800-498-5743

CAP IM Supply, Inc.
2825 East Cottonwood Pkwy, Suite 500
Salt Lake City, UT 84121

EPA Est. No. XXXXX-XX-X

EPA Reg No. 91384-3

T2.200 for Dogs

EPA Reg. No. 91384-3

July 8, 2024

**{SIDE PANELS OF CARTON AND OF OVERWRAP FOR 2 AND 3 CARTON PACKAGES IN CRP DESCRIBED ON PAGE 1:
2 X 1-COUNT, 2 X 2-COUNT, 2 X 3-COUNT, 2 X 4-COUNT, 2 X 6-COUNT, AND 3 X 4-COUNT}**

{The following “FOR USE ONLY” restriction is optional on the side panels of the carton and overwrap}

[FOR USE **ONLY** ON DOGS AND PUPPIES 7 WEEKS AND OLDER AND WEIGHING [5-10 LBS.][**SMALL DOGS**] [11-20 LBS.][**MEDIUM DOGS**] [21-55 LBS.][**LARGE DOGS**] [OVER 55 LBS.][**X-LARGE DOGS**]]

[T2.200 for Dogs]

[EPA Reg. No. 91384-3]

Lot/Batch Number

{PACKAGE INSERT LABELING}

{Every carton will contain an insert and when a foil pouch is used, the insert will be inside the foil pouch}

[T2.200 for Dogs]

{Alternate Brand Names are listed at the end of this draft label}

Monthly topical treatment and prevention of ticks, fleas, mosquitos, biting flies, and lice [on dogs].

FOR USE **ONLY** ON DOGS AND PUPPIES 7 WEEKS AND OLDER AND WEIGHING [5-10 LBS.][**SMALL DOGS**] [11-20 LBS.][**MEDIUM DOGS**] [21-55 LBS.][**LARGE DOGS**] [OVER 55 LBS.][**X-LARGE DOGS**]

Active Ingredients	% By Weight
Imidacloprid	8.80%
Permethrin*	44.00%
Pyriproxyfen	0.44%
Other Ingredients	46.76%
Total	100.00%

*cis/trans ratio: Max 55(±) cis and min 45%(±) trans

KEEP OUT OF REACH OF CHILDREN {font size will comply with 40 CFR 156.60(b)}

WARNING {font size will comply with 40 CFR 156.60(b)}

PRECAUTIONARY STATEMENTS

HAZARDS TO HUMANS

WARNING. Causes substantial but temporary eye injury. Do not get in eyes or on clothing. Harmful if swallowed. Prolonged or frequently repeated skin contact may cause allergic reactions in some individuals. Wash thoroughly with soap and water after handling and before eating, drinking, chewing gum, using tobacco or using the toilet. Remove and wash contaminated clothing before reuse.

HAZARDS TO DOMESTIC ANIMALS

For external use on dogs only. Do not use on animals other than dogs. Do not use on dogs or puppies under seven (7) weeks of age or weighing less than [insert lowest weight of weight class] pounds. Do not get this product in dog's eyes or mouth. As with any product, consult your veterinarian before using this product on debilitated, aged, pregnant or nursing dogs. Individual sensitivities may occur after using ANY pesticide product for dogs. If signs persist, or become more severe, consult a veterinarian immediately. This product does not substitute for prescribed heartworm preventative. If your dog is on medication, consult your veterinarian before using this or any other product.

ENVIRONMENTAL HAZARDS

This pesticide is extremely toxic to aquatic organisms, including fish and invertebrates. Do not add directly to water. Do not contaminate water when disposing of product or packaging.

Side Effects:

Monitor your dog after application. Side effects may include signs of skin irritation such as redness, scratching, or other signs of discomfort. Gastrointestinal signs such as vomiting or diarrhea have also been reported. If these or other side effects (such as lethargy or agitation) occur, consult your veterinarian or call 1-800-498-5743.

FIRST AID	
If In Eyes:	<ul style="list-style-type: none">• Hold eye open and rinse slowly and gently with water for 15-20 minutes. Remove contact lenses, if present, after the first 5 minutes, then continue rinsing eye.• Call a poison control center or doctor for treatment advice.
If Swallowed:	<ul style="list-style-type: none">• Call a poison control center or doctor immediately for treatment advice.• Have person sip a glass of water if able to swallow.• Do not induce vomiting unless told to do so by the poison control center or doctor.• Do not give anything by mouth to an unconscious person.
HOT LINE NUMBER	
Have the product container or label with you when calling a poison control center or doctor, or going for treatment. For medical emergencies call 1-800-498-5743. For consumer questions, call 1-888-261-4657.	
NOTE TO PHYSICIAN	
Treat the patient symptomatically.	

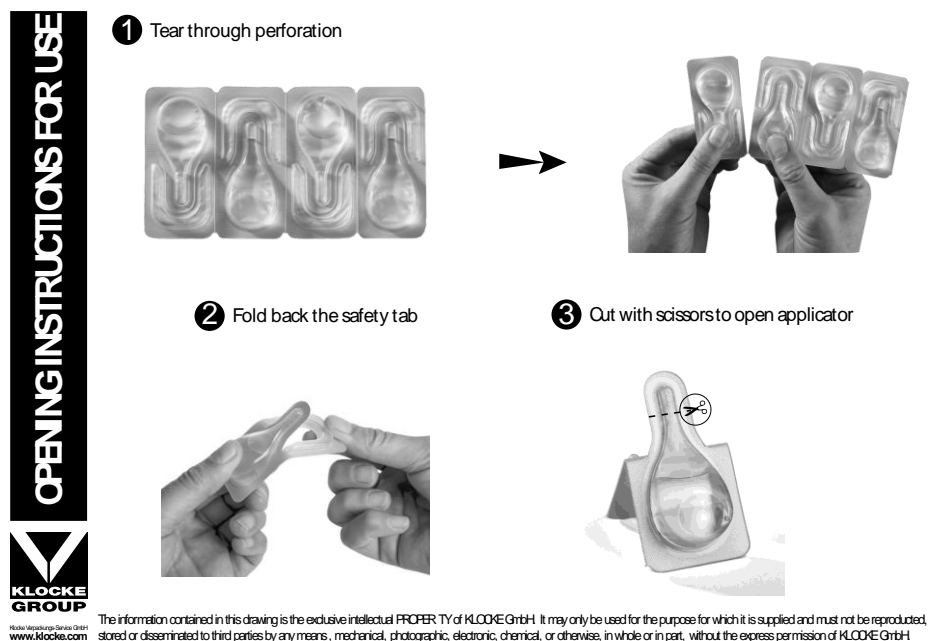
DIRECTIONS FOR USE

It is a violation of Federal Law to use this product in a manner inconsistent with its labeling. Do not contaminate feed or food. Do not allow children to apply product. Dog must be dry at time of application and remain dry for 24 hours after application.

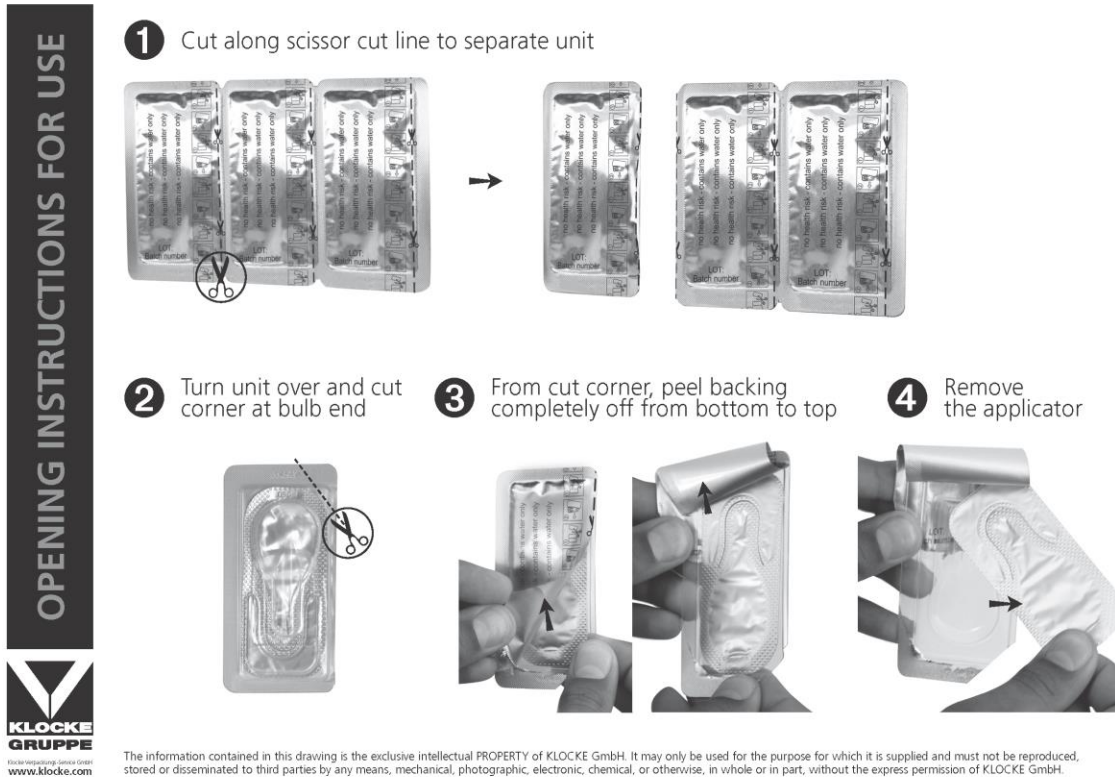
{This product has four alternative Child Resistant Packaging types listed here in the same sequence as illustrated below: 1) applicator without an outer blister pack, 2) blister pack containing an applicator, 3) screw top tube, and 4) Neopac tube}

{For CRP: Applicator without a blister}

HOW TO OPEN



{When this product is packaged as the 3-count or 6-count version, the above image will show a 3-count applicator strip instead of the 4-count as shown above.}

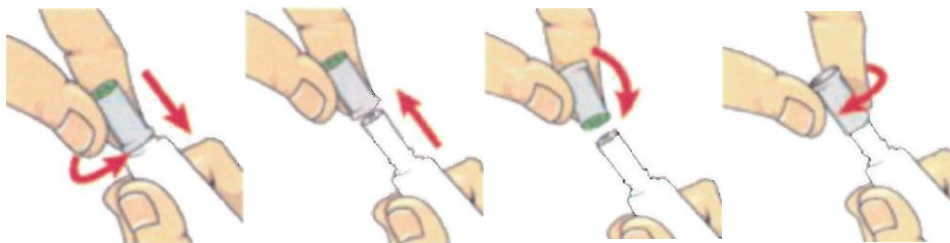


{When this product is packaged as the 2-count version, the above image will show a 2-count applicator strip instead of the 3-count as shown above.}

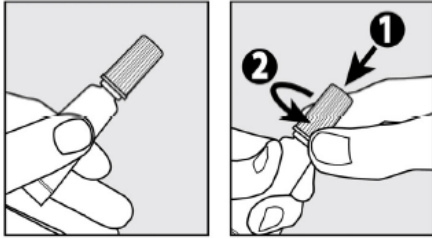
{For CRP: Screw top tube}

HOW TO OPEN

Remove inner tray from carton. Firmly grasp one tube and pull away from tray. Hold tube firmly in one hand. With the other hand, push down firmly on the cap and turn counter clockwise (to the left). Continue twisting cap until it comes off the tube. Turn the cap around and place opposite end of cap back on tube. Twist cap to break seal. Remove cap from tube.



HOW TO OPEN

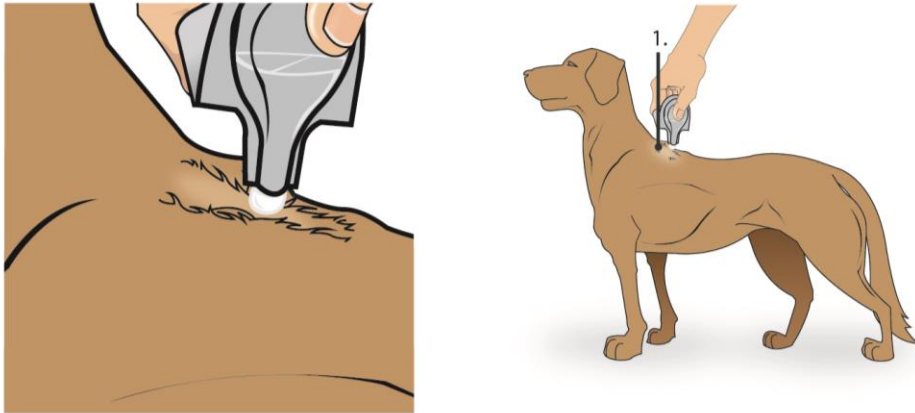


HOW TO APPLY

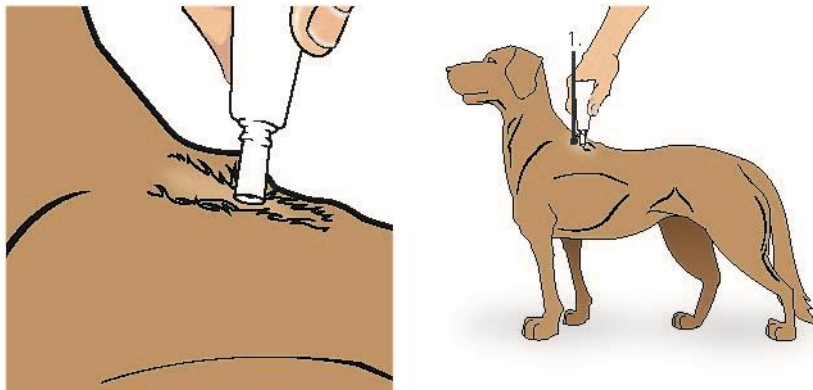
1. Prepare [applicator][tube] as shown in “How to Open”.
2. {The appropriate text will be used matching the carton weight class and each weight class will have its own separate insert.}
{5 – 10 lbs and 11-20 lbs.}

Apply the entire contents of the [applicator][tube] to one spot [as shown]:

{The following visual is optional for applicator without a blister and blister containing applicator.}



{The following visual is optional for screw top tube.}

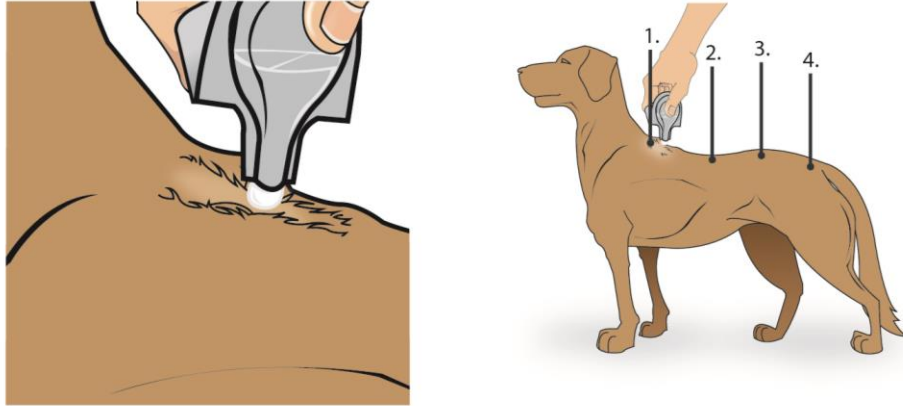


[Part the hair on the dog’s back between the shoulder blades until the skin is visible. Place the tip of the [applicator][tube] on the skin and gently squeeze to apply all the contents to the skin.] [Part the dog’s hair and place the tip of the [applicator][tube] behind the neck and between the shoulders. Squeeze the [applicator][tube] thoroughly so that the entire contents are applied to one spot.] Carefully avoid allowing the product to run off the side of the dog.

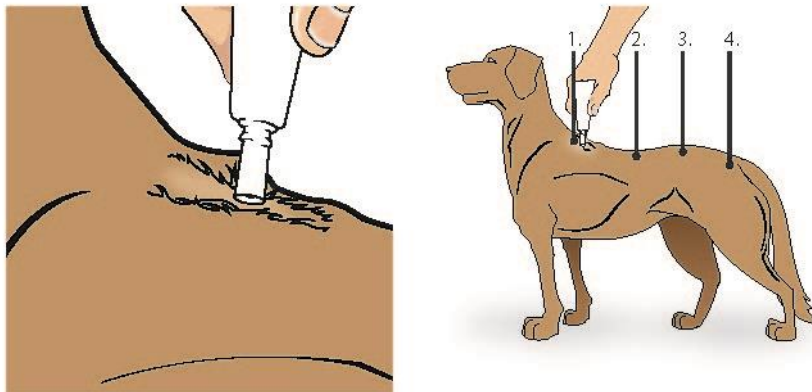
{21 – 55 lbs. and Over 55 lbs.}

Apply the entire contents of the [applicator][tube] evenly to three or four spots on the top of the back of the dog from the shoulder to the base of the tail [as shown]:

{The following visual is optional for applicator without a blister and blister container applicator.}



{The following visual is optional for screw top tube.}



At each application site part the hair of the dog until the skin is visible. Place the tip of the [applicator][tube] on the skin and gently squeeze to apply the solution on the skin. Do not apply an amount of solution at any one spot that could cause some of the solution to run off the side of the dog.

3. Discard empty [applicator][tube] and packaging as described in the Storage and Disposal section.
4. Under normal conditions the product remains effective for a month. In case of severe pest infestations [at the initiation of treatment], retreatment once a week is permitted not to exceed 4 weeks. [After][With] successful pest control, please return to a monthly schedule.

RESTRICTIONS:

Do not use on cats.

Do not get this product in your dog's eyes.

Do not allow your dog to ingest this product.

Do not apply more than one application per treatment per dog [even for dogs over 55 lbs.]. {Bracketed phrase is mandatory on inserts for dogs over 55 lbs.}

T2.200 for Dogs

EPA Reg. No. 91384-3

July 8, 2024

Do not use on dogs under 7 weeks of age or weighing less than the minimum weight shown on the carton and the [applicator][tube].

Do not allow adults, children, or pets to touch treated area until dry.

Do not bathe or allow dog to swim for 24 hours after application.

[Keep treated dog off furniture until the treated area is dry.]

T2.200 for Dogs
EPA Reg. No. 91384-3
July 8, 2024

PRODUCT INFORMATION

The successive feeding activity of fleas on dogs may elicit a hypersensitivity skin disorder known as flea allergy dermatitis (FAD). Treatment of dogs with [T2.200 for Dogs] rapidly kills fleas and may reduce the incidence of this condition.

[T2.200 for Dogs] kills existing fleas on dogs within 12 hours. Reinfesting fleas are killed within 2 hours with protection against further flea infestation lasting at least four (4) weeks. Pre-existing pupae in the environment may continue to emerge for six (6) weeks or longer depending upon the climatic conditions.

[T2.200 for Dogs] is waterproof and remains effective following a shampoo [treatment], swimming or after exposure to rain or sunlight.

Monthly treatments are required for optimal control and prevention of fleas and ticks.

STORAGE AND DISPOSAL

Do not contaminate water, food or feed by storage or disposal.

Pesticide Storage: Store in a cool, dry place inaccessible to children and pets. Protect from freezing. **Pesticide**

Disposal and Container Handling: Non refillable container. **If empty:** Do not reuse this container. Place in trash or offer for recycling if available. **If partly filled:** Call your local solid waste agency for disposal instructions. Do not pour or dispose down-the-drain or sewer.

{NOTE TO REVIEWER: A warranty statement of any kind is optional, but if a warranty statement is used, the following two alternative options are proposed:}

[LIMITED WARRANTY AND LIMITATION OF DAMAGES

IMPORTANT: READ BEFORE USE. Read the entire Directions for Use, Conditions of Warranties and Limitations of Liability before using this product. If these terms and conditions are not acceptable, return the unopened product container at once. By using this product, user or buyer accepts the following Disclaimer of Warranties and Limitations of Liability.

CONDITIONS: The directions for use of this product are believed to be adequate and must be followed carefully. However, it is impossible to eliminate all risks associated with the use of this product. Ineffectiveness, injury, and other unintended consequences may result because of such factors as manner of use or application (including misuse), the presence of other materials, weather conditions, and other unknown factors, all of which are beyond the control of CAP IM Supply, Inc. All such risks shall be assumed by the user or buyer.

DISCLAIMER OF WARRANTIES: To the extent consistent with applicable law, CAP IM Supply, Inc. makes no other warranties, express or implied, of merchantability or of fitness for a particular purpose or otherwise, that extend beyond statements on this label.

LIMITATIONS OF LIABILITY: To the extent consistent with applicable law, neither CAP IM Supply, Inc., the manufacturer, nor the Seller shall be liable for any indirect, special, incidental or consequential damages resulting from the use, handling, application, storage, or disposal of this product. To the extent consistent with applicable law, the exclusive remedy of the user or buyer for any and all losses, injuries or damages resulting from the use, handling, application, or storage of this product, whether in contract, warranty, tort, negligence, strict liability or otherwise, shall not exceed the purchase price paid.]

[WARRANTY

To the extent consistent with applicable law, CAP IM Supply, Inc. and/or seller makes no warranty, expressed or implied, concerning the use of this product other than indicated on the label. Buyer assumes all risk of use resulting from the handling of this product. Seller shall return the purchase price or at the election of the seller replace the product.]

T2.200 for Dogs
EPA Reg. No. 91384-3
July 8, 2024

{NOTE TO REVIEWER: The following optional websites, currently under construction, will go live prior to use on any packaging being released for shipment:}

[For more information visit www.pet-lock.com][www.advecta3.com]

DO NOT USE ON CATS – MAY BE FATAL. Keep cats away from treated dogs for 24 hours. If applied to a cat or ingested by a cat, contact your veterinarian immediately.



For consumer questions call 1-888-261-4657
For medical emergencies call 1-800-498-5743

EPA Reg No. 91384-3

CAP IM Supply, Inc.
2825 East Cottonwood Pkwy, Suite 500
Salt Lake City, UT 84121

(LABEL TEXT FOR FOIL POUCH)

{The use of a foil pouch is optional.}

Use **Only** on Dogs and Puppies 7 Weeks and older and weighing [5-10 lbs][SMALL DOGS] [11-20 lbs][MEDIUM DOGS] [21-55 lbs][LARGE DOGS] [OVER 55 lbs][X-LARGE DOGS]

[T2.200 for Dogs]

ACTIVE INGREDIENTS:	% BY WEIGHT
Imidacloprid	8.80%
Permethrin*	44.00%
Pyriproxyfen	0.44%
OTHER INGREDIENTS	46.76%
TOTAL	100.00%

*cis/trans ratio: Max 55(±) cis and min 45%(±) trans

READ THE ENTIRE LABEL BEFORE USE

KEEP OUT OF REACH OF CHILDREN {font size will comply with 40 CFR 156.60(b)}

WARNING {font size will comply with 40 CFR 156.60(b)}



DO NOT USE ON CATS

EPA Reg. No. 91384-3

CAP IM Supply, Inc.

Net Contents:

{In the following statement, the “s” and “each” will be used for all counts of applicators or tubes except 1}

[1][2][3][4][6][8] [applicator][tube][s], [each] containing 0.014 fl. oz (0.4 mL)

[1][2][3][4][6][8] [applicator][tube][s], [each] containing 0.034 fl. oz (1.0 mL)

[1][2][3][4][6][8] [applicator][tube][s], [each] containing 0.084 fl. oz (2.5 mL)

[1][2][3][4][6][8] [applicator][tube][s], [each] containing 0.135 fl. oz (4.0 mL)

NOT FOR RESALE | [Please] Keep pouch in [carton][box].

T2.200 for Dogs
EPA Reg. No. 91384-3
July 8, 2024

{LABEL TEXT FOR INDIVIDUAL APPLICATOR/TUBE AND BLISTER WHEN USED}

[T2.200 for Dogs]

8.80% imidacloprid
44.00% permethrin
0.44% pyriproxyfen

EPA Reg. No. 91384-3

KEEP OUT OF REACH OF CHILDREN {font size will comply with 40 CFR 156.60(b)}

WARNING {font size will comply with 40 CFR 156.60(b)}

DO NOT USE ON CATS



Read the Entire Label Before Use

[External Use Only] {Will include as room allows on the applicator or tube}

For dogs over 7 weeks of age

CAP IM Supply, Inc

[0.014 fl oz
5-10 LBS.]

[0.034 fl oz
11-20 LBS.]

[0.084 fl oz
21-55 LBS.]

[0.135 fl oz
OVER 55 LBS.]

Lot No. 0000000

T2.200 for Dogs

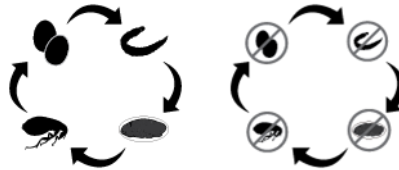
EPA Reg. No. 91384-3

July 8, 2024

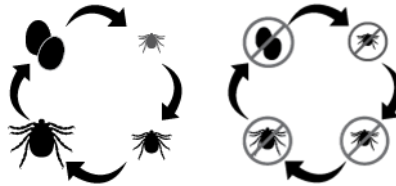
{OPTIONAL MARKETING CLAIMS}

1. For use only on dogs and puppies 7 weeks of age and older and greater than 5 lbs.
2. [T2.200 for Dogs] contains [imidacloprid], [permethrin] and [an/the] [insect growth regulator] [IGR] [pyriproxyfen]
3. A single topical application [dose] remains effective for [a month][four](4) weeks]
4. Convenient, easy to apply [monthly] topical solution
5. Once a month topical flea treatment for only dogs 7 weeks of age or older and greater than 5 lbs.
6. [T2.200 for Dogs] is indicated for the prevention and treatment of fleas, ticks, biting flies, mosquitoes, and lice only on dogs [7 weeks of age and older and greater than 5 lbs.]
7. Repels and kills ticks, fleas, and mosquitoes
8. For the treatment and prevention of flea infestations
9. One treatment prevents further flea infestations for [a month][four](4) weeks]
10. Kills fleas on dogs within 12 hours
11. Continues to prevent infestations for [a month][four](4) weeks
12. Kills fleas within 12 hours of application
13. Controls existing flea infestations by rapidly killing adult fleas
14. Prevents reinfestations by killing adult fleas before they lay eggs
15. Effectively breaks the flea life cycle
16. Flea adulticide, larvicide and oocide
17. Effectively targets all [life] stages of [fleas] and [ticks]
18. 3-way flea protection [kills][controls] adults, larvae[,]and] eggs
19. Prevents development of fleas, [flea eggs], [pupae] and [larvae] for [a month][four](4) weeks]
20. Prevents development of all flea [life] stages [for] [a month][four](4) weeks]
21. Repels and kills [all] [life] [stages of fleas]
22. Prevents flea eggs [and flea larvae] from developing into [biting] [adult] fleas
23. Treatment with [T2.200 for Dogs] rapidly kills fleas and may reduce the incidence of Flea Allergic Dermatitis (FAD)
24. Repels and kills ticks [including Deer ticks that may transmit Lyme disease)], [American dog ticks that may transmit Rocky Mountain spotted fever)], [Brown dog ticks that may transmit Ehrlichiosis)], and [Lone Star ticks that may transmit Ehrlichiosis)] for up to four weeks
25. Repels and kills mosquitoes [for up to four weeks]
26. Repels and kills mosquitoes often before they have a chance to take a blood meal
27. [Prevents blood-feeding by] [Kills and repels][killing and repelling] mosquitoes
28. Repels and inhibits blood-feeding by biting flies
29. Repels and prevents blood-feeding by biting flies
30. Repels [annoying][bothersome][nuisance] biting flies
31. Inhibits [annoying][bothersome][nuisance] biting flies
32. [Prevents][inhibits] blood-feeding by biting flies
33. Remains effective after bathing [and/or swimming]
34. Remains effective following swimming [and/or shampooing]
35. Kills [biting][chewing] lice
36. For treatment and prevention of [biting][chewing] lice [infestations]
37. Controls existing [biting][chewing] lice infestations
38. 5-way protection against fleas, ticks, biting flies, mosquitoes, and lice
39. Treats, prevents and controls [biting][chewing] lice [infestations]
40. Provides effective control of [biting][chewing] lice [infestations]
41. Kills [biting][chewing] lice and prevents further infestations
42. For treatment and prevention of infestations with [biting][chewing] lice
43. Waterproof

44. Remains effective after exposure to rain or sunlight
45. Fragrance free
46. 1 Pack [1 Tube][1 Dose][1 Month Supply]
47. 2 Pack [2 Applicators][2 Tubes][2 Doses][2 Months' Supply]
48. 3 Pack [3 Applicators][3 Tubes][3 Doses][3 Months' Supply]
49. 4 Pack [4 Applicators][4 Tubes][4 Doses][4 Months' Supply]
50. 6 Pack [6 Applicators][6 Tubes][6 Doses][6 Months' Supply][6 Months' Total Supply][A Total of 6 Applicators][A Total of 6 Tubes]
51. 8 Pack [8 Applicators][8 Tubes][8 Doses][8 Total Doses][8 Months' Supply][8 Months' Total Supply][A Total of 8 Applicators][A Total of 8 Tubes]
52. {this claim may be used on overwrap only}[12 Months' Total Supply][12 Total Doses][A Total of 12 Applicators][A Total of 12 Tubes]
53. [2][3][4][6][8][12] [applicators][tubes] for the price of [1][2][3][4][5][6][7][8][9][10][11]
54. Small Dog [5-10 lbs.]
55. Medium Dog [11-20 lbs.]
56. Large Dog [21-55 lbs.]
57. Ex Large Dog [Over 55 lbs.]



58. Illustration of flea life cycle
59. Halts life cycle of fleas



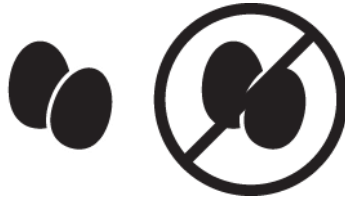
60. Illustration of tick life cycle
61. Halts life cycle of ticks



62. Illustration of [chewing] lice life cycle
63. Halts life cycle of [chewing] lice



64. Illustration of [adult] fleas
65. Kills [and repels] [adult] fleas



- 66. Illustration of flea eggs
- 67. Controls hatching of flea eggs



- 68. Illustration of flea larvae
- 69. Kills flea larvae



- 70. Illustration of [chewing] lice
- 71. Kills [chewing] lice



- 72. Illustration of tick
- 73. Kills [and repels] ticks



- 74. Illustration of mosquito
- 75. Kills [and repels] mosquitos



- 76. Illustration of biting fly {biting fly icon will indicate "Biting Fly" to distinguish from other flies}
- 77. Repels biting flies
- 78. 5-way protection {Note to reviewer: To be associated with the 5 parasite illustrations.}
- 79. Picture or illustration of a dog or puppy of appropriate weight class {see page 24 for dog pictures}
- 80. Picture or illustration of the [T2.200 for Dogs] logo {Page 24 for example logos}
- 81. Available from Licensed Veterinarians {Only use this claim on alternate brand named products sold exclusively to veterinary clinics and shelters}
- 82. Long-lasting

T2.200 for Dogs
EPA Reg. No. 91384-3
July 8, 2024

T2.200 for Dogs
EPA Reg. No. 91384-3
July 8, 2024

{TEXT FOR REMINDER STICKERS}
{NOTE TO REVIEWER: This entire section on reminder stickers is optional}

[Optional marketing claims]

Picture of Dog or Puppy 7 weeks or older {dog in picture will be within the weight range of the product as packaged. **Pictures of dogs in each weight range that will appear on label can be found on page 24.**}

Does not wash off

For monthly control of fleas, ticks, [biting flies], [chewing lice], mosquitoes

[T2.200 for Dogs]

The first time you treat your dog, place the First (Application) Sticker on your calendar. Apply Stickers [2 and 3] [2, 3, 4] [2 through 6] [2 through 8] to the calendar [30 and 60 days] [monthly] [30, 60, and 90 days] [30, 60, 90, 120, and 150 days] [30, 60, 90, 120, 150, 180, and 210 days] [at the end of each 30 day period] after the first [application][dose] to remind you it's time to reapply [T2.200 for Dogs].

First Application [Dose][Sticker]: [Apply] [T2.200 for Dogs]

Month 2 [Sticker]: [Apply] [T2.200 for Dogs]

Month 3 [Sticker]: [Apply] [T2.200 for Dogs]

[Month 4 [Sticker]: [Apply] [T2.200 for Dogs]]

[Month 5 [Sticker]: [Apply] [T2.200 for Dogs]]

[Month 6 [Sticker]: [Apply] [T2.200 for Dogs]]

[Month 7 [Sticker]: [Apply] [T2.200 for Dogs]]

[Month 8 [Sticker]: [Apply] [T2.200 for Dogs]]



Do Not Use on Cats

For Customer Service please call 1-888-261-4657

CAP IM Supply, Inc.
2825 East Cottonwood Pkwy, Suite 500
Salt Lake City, UT 84121

[Optional bar code]

T2.200 for Dogs
EPA Reg. No. 91384-3
July 8, 2024
{Dog pictures by weight range}
Small dog, 5-10 pounds



Medium dog, 11-20 pounds



Large dog, 21-55 pounds



Extra large dog, over 55 pounds



Example of Logos

PARADEFENSE[®]
ADVANCED
FOR DOGS

PROV_✓ECTA[®]
ADVANCED FOR DOGS

{ALTERNATE BRAND NAMES}

[ADV Advecta for Dogs]
[ADV Advecta 2 for Dogs]
[ADV Advecta II for Dog]
[ADV Advecta 3 for Dogs]
[ADV Advecta III for Dog]
[ADV PetAction for Dogs]
[ADV PetAction 2 for Dogs]
[ADV PetAction II for Dogs]
[ADV PetAction 3 for Dogs]
[ADV PetAction III for Dogs]
[ADV PetLock for Dogs]
[ADV PetLock 2 for Dogs]
[ADV PetLock II for Dogs]
[ADV PetLock 3 for Dogs]
[ADV PetLock III for Dogs]
[Advecta 3 for Dogs]
[Advecta K9 for Dogs]
[K9 Advecta (Advanced) for Dogs]
[Advecta III for Dogs]
[Advecta ADV for Dogs]
[Advecta ADV 2 for Dogs]
[Advecta ADV II for Dogs]
[Advecta ADV 3 for Dogs]
[Advecta ADV III for Dogs]
[Advecta Complete for Dogs]
[Advecta Max for Dogs]
[Advecta Ticks for Dogs]
[Advecta Tix for Dogs]
[K9 Advecta Tix for Dogs]
[Advecta Tix K9 for Dogs]
[Canine Advecta Tix for Dogs]
[Advecta Tix Canine for Dogs]
[Advecta Total for Dogs]
[K9 Advecta Total for Dogs]
[Canine Advecta Total for Dogs]
[Advecta Total K9 for Dogs]
[Advecta Total Canine for Dogs]
[Advectix for Dogs]
[Advectix K9 for Dogs]
[K9 Advectix for Dogs]
[Advectix Canine for Dogs]
[Canine Advectix for Dogs]
[Advectix 2 for Dogs]
[K9 Advectix 2 for Dogs]
[Advectix K9 for Dogs]
[Canine Advectix 2 for Dogs]
[Advectix Canine 2 for Dogs]
[Advectix II for Dogs]
[K9 Advectix II for Dogs]
[Advectix II K9 for Dogs]
[Canine Advectix II for Dogs]
[Advectix II Canine for Dogs]

T2.200 for Dogs

EPA Reg. No. 91384-3

July 8, 2024

[Advectix 3 for Dogs]

[K9 Advectix 3 for Dogs]

[Advectix 3 K9 for Dogs]

[Canine Advectix 3 for Dogs]

[Advectix 3 Canine for Dogs]

[Advectix III for Dogs]

[K9 Advectix III for Dogs]

[Advectix III K9 for Dogs]

[Canine Advectix III for Dogs]

[Advectix III Canine for Dogs]

[Para|Defense 3 for Dogs]

[K9 Para|Defense 3 for Dogs]

[Canine Para|Defense 3 for Dogs]

[Para|Defense K9 3 for Dogs]

[Para|Defense Canine 3 for Dogs]

[Para|Defense Advanced for Dogs]

[K9 Para|Defense Advanced for Dogs]

[Canine Para|Defense Advanced for Dogs]

[Para|Defense K9 Advanced for Dogs]

[Para|Defense Canine Advanced for Dogs]

[Para|Defense Complete for Dogs]

[K9 Para|Defense Complete for Dogs]

[Canine Para|Defense Complete for Dogs]

[Para|Defense K9 Complete for Dogs]

[Para|Defense Canine Complete for Dogs]

[Para|Defense Extra for Dogs]

[K9 Para|Defense Extra for Dogs]

[Canine Para|Defense Extra for Dogs]

[Para|Defense Extra K9 for Dogs]

[Para|Defense Extra Canine for Dogs]

[Para|Defense Flea & Tick for Dogs]

[K9 Para|Defense Flea & Tick for Dogs]

[Canine Para|Defense Flea & Tick for Dogs]

[Para|Defense Flea & Tick K9 for Dogs]

[Para|Defense Flea & Tick Canine for Dogs]

[Para|Defense III for Dogs]

[K9 Para|Defense III for Dogs]

[Canine Para|Defense III for Dogs]

[Para|Defense III K9 for Dogs]

[Para|Defense Canine III for Dogs]

[Para|Defense Max for Dogs]

[K9 Para|Defense Max for Dogs]

[Canine Para|Defense Max for Dogs]

[Para|Defense Max K9 for Dogs]

[Para|Defense Canine Max for Dogs]

[Para|Defense Plus Tick Control for Dogs]

[K9 Para|Defense Plus Tick Control for Dogs]

[Para|Defense Pro for Dogs]

[K9 Para|Defense Pro for Dogs]

[Canine Para|Defense Pro for Dogs]

[Para|Defense Pro K9 for Dogs]

[Para|Defense Canine Pro for Dogs]

[Para|Defense Multi-Vector for Dogs]

[K9 Para|Defense Multi-Vector for Dogs]

T2.200 for Dogs

EPA Reg. No. 91384-3

July 8, 2024

[Canine Para|Defense Multi-Vector for Dogs]

[Para|Defense Multi-Vector K9 for Dogs]

[Para|Defense Canine Multi-Vector for Dogs]

[Para|Defense Plus Ticks for Dogs]

[K9 Para|Defense Plus for Dogs]

[Canine Para|Defense Plus for Dogs]

[Para|Defense Plus K9 for Dogs]

[Para|Defense Plus Canine for Dogs]

[Para|Defense Tix for Dogs]

[K9 Para|Defense Tix for Dogs]

[Canine Para|Defense Tix for Dogs]

[Para|Defense Tix K9 for Dogs]

[Para|Defense Canine Tix for Dogs]

[PetAction 3 for Dogs]

[PetAction 3 K9 for Dogs]

[PetAction 3 Canine for Dogs]

[K9 PetAction 3 for Dogs]

[Canine PetAction 3 for Dogs]

[PetAction III for Dogs]

[PetAction III K9 for Dogs]

[PetAction III Canine for Dogs]

[K9 PetAction III for Dogs]

[Canine PetAction III for Dogs]

[PetAction K9 (Advanced) for Dogs]

[K9 PetAction (Advanced) for Dogs]

[PetAction ADV for Dogs]

[PetAction ADV K9 for Dogs]

[PetAction ADV Canine for Dogs]

[K9 PetAction ADV for Dogs]

[Canine PetAction ADV for Dogs]

[PetAction ADV 2 for Dogs]

[K9 PetAction ADV for Dogs]

[Canine PetAction ADV for Dogs]

[PetAction ADV II for Dogs]

[K9 PetAction ADV II for Dogs]

[Canine PetAction ADV II for Dogs]

[PetAction ADV 3 for Dogs]

[K9 PetAction ADV 3 for Dogs]

[Canine PetAction ADV 3 for Dogs]

[PetAction ADV III for Dogs]

[K9 PetAction ADV III for Dogs]

[Canine PetAction ADV III for Dogs]

[PetAction Complete for Dogs]

[K9 PetAction Complete for Dogs]

[Canine PetAction Complete for Dogs]

[PetAction Max for Dogs]

[K9 PetAction Max for Dogs]

[Canine PetAction Max for Dogs]

[PetAction Ticks for Dogs]

[K9 PetAction Ticks for Dogs]

[Canine PetAction Ticks for Dogs]

[PetAction Tix for Dogs for Dogs]

[K9 PetAction Tix for Dogs]

[Canine PetAction Tix for Dogs]

T2.200 for Dogs
EPA Reg. No. 91384-3
July 8, 2024
[PetAction Total for Dogs]
[K9 PetAction Total for Dogs]
[Canine PetAction Total for Dogs]
[PetLock 3 for Dogs]
[K9 PetLock 3 for Dogs]
[Canine PetLock 3 for Dogs]
[PetLock 3 K9 for Dogs]
[PetLock 3 Canine for Dogs]
[PetLock K9 for Dogs]
[K9 PetLock for Dogs]
[PetLock III for Dogs]
[K9 PetLock III for Dogs]
[Canine PetLock III for Dogs]
[PetLock III K9 for Dogs]
[PetLock III Canine for Dogs]
[PetLock ADV for Dogs]
[K9 PetLock DV for Dogs]
[Canine PetLock ADV for Dogs]
[PetLock ADV K9 for Dogs]
[PetLock ADV Canine for Dogs]
[PetLock ADV 2 for Dogs]
[K9 PetLock ADV 2 for Dogs]
[PetLock ADV 2 Canine for Dogs]
[PetLock ADV II for Dogs]
[K9 PetLock ADV II for Dogs]
[PetLock ADV II Canine for Dogs]
[PetLock ADV 3 for Dogs]
[K9 PetLock ADV 3 for Dogs]
[PetLock ADV III for Dogs]
[K9 PetLock ADV III for Dogs]
[PetLock ADV III Canine for Dogs]
[PetLock Complete for Dogs]
[PetLock Max for Dogs]
[PetLock Ticks for Dogs]
[K9 PetLock Ticks for Dogs]
[Canine PetLock Ticks for Dogs]
[PetLock Tix for Dogs]
[PetLock tix K9 for Dogs]
[PetLock Tix Canine for Dogs]
[PetLock Total for Dogs]
[K9 PetLock Total for Dogs]
[Canine PetLock Total for Dogs]
[PetLock Total K9 for Dogs]
[PetLock Total Canine for Dogs]
[K9 Lock II for Dogs]
[Provecta Advanced for Dogs]
[Protech Max for Dogs]
[Protechs Max for Dogs]
[Protek Max for Dogs]
[Proteks Max for Dogs]
[Protec Max for Dogs]
[Protechs Max for Dog]
[Protex Max for Dogs]
[ProTech Max for Dogs]

T2.200 for Dogs

EPA Reg. No. 91384-3

July 8, 2024

[ProTechs Max for Dogs]

[ProTek Max for Dogs]

[ProTeks Max for Dogs]

[ProTec Max for Dogs]

[ProTecs Max for Dogs]

[ProTex Max for Dogs]

[Protect Max for Dogs]

[Protects Max for Dogs]

[Protection Max for Dogs]