



U.S. ENVIRONMENTAL PROTECTION AGENCY  
 Office of Pesticide Programs  
 Registration Division (7505P)  
 1200 Pennsylvania Ave., N.W.  
 Washington, D.C. 20460

EPA Reg. Number:

91300-1

Date of Issuance:

6/19/18

NOTICE OF PESTICIDE:

Registration  
 Reregistration

(under FIFRA, as amended)

Term of Issuance:

Conditional, Time-Limited  
 Expires: 06/19/2020

Name of Pesticide Product:

ShieldTec Plus for Dogs

Name and Address of Registrant (include ZIP Code):

Ann Tillman  
 Agent for Promika  
 c/o Pyxis  
 4110 136<sup>th</sup> St. Ct NW  
 Gig Harbor, WA 98332

**Note:** Changes in labeling differing in substance from that accepted in connection with this registration must be submitted to and accepted by the Registration Division prior to use of the label in commerce. In any correspondence on this product always refer to the above EPA registration number.

On the basis of information furnished by the registrant, the above named pesticide is hereby registered under the Federal Insecticide, Fungicide and Rodenticide Act.

Registration is in no way to be construed as an endorsement or recommendation of this product by the Agency. In order to protect health and the environment, the Administrator, on his motion, may at any time suspend or cancel the registration of a pesticide in accordance with the Act. The acceptance of any name in connection with the registration of a product under this Act is not to be construed as giving the registrant a right to exclusive use of the name or to its use if it has been covered by others.

This product is conditionally registered in accordance with FIFRA section 3(c)(7)(A). You must comply with the following conditions:

1. Submit and/or cite all data required for registration/reregistration/registration review of your product under FIFRA when the Agency requires all registrants of similar products to submit such data.

Signature of Approving Official:

Elizabeth Fertich, Product Manager 04  
 Invertebrate & Vertebrate Branch 1 Registration Division (7505P)

Date:

6/19/18

2. The Agency has found your company to be in compliance with the terms and conditions for the subject product and is extending the two-year registration restriction. This registration is time-limited and expires 06/19/2020.
3. Please note that the product is still subject to all other previously required conditions of registration. Your company is required to adhere to the spot-on label mitigation, and to submit quarterly enhanced incident reports and quarterly sales information as stated in the initial registration notice dated 8/27/2015.
4. Submit one copy of the final printed label for the record before you release the product for shipment.

Should you wish to add/retain a reference to the company's website on your label, then please be aware that the website becomes labeling under the Federal Insecticide Fungicide and Rodenticide Act and is subject to review by the Agency. If the website is false or misleading, the product would be misbranded and unlawful to sell or distribute under FIFRA section 12(a)(1)(E). 40 CFR 156.10(a)(5) list examples of statements EPA may consider false or misleading. In addition, regardless of whether a website is referenced on your product's label, claims made on the website may not substantially differ from those claims approved through the registration process. Therefore, should the Agency find or if it is brought to our attention that a website contains false or misleading statements or claims substantially differing from the EPA approved registration, the website will be referred to the EPA's Office of Enforcement and Compliance.

If you fail to satisfy these data requirements, EPA will consider appropriate regulatory action including, among other things, cancellation under FIFRA section 6(e). Your release for shipment of the product constitutes acceptance of these conditions. A stamped copy of the label is enclosed for your records.

Please note that the record for this product currently contains the following CSFs:

- Basic CSF dated 04/02/2015
- Alternate CSF 1 dated 04/02/2015
- Alternate CSF 2 dated 04/02/2015
- Alternate CSF 3 dated 04/02/2015
- Alternate CSF 4 dated 04/02/2015

If you have any questions, please contact Jennifer Gaines at 703-305-5967 or via email at [gaines.jennifer@epa.gov](mailto:gaines.jennifer@epa.gov).

Enclosure

text in [] denotes optional language  
text in {} denotes location of text on packaging, notes to reviewer, text that will not be on final label  
text in () appears on label

**{FRONT PANEL OF CARTON}**

**SHIELDTEC PLUS FOR DOGS**

**[Alternate Brand Name: Baseline Flea & Tick Prevention for Dogs]**

{Font size for word "Dog" in product name must be at least 75% the height of the largest letter in the primary brand name}

PLEASANT CITRUS SCENT

FLEA AND TICK CONTROL FOR DOGS AND PUPPIES 5-15 LBS & OVER 12 WEEKS OF AGE  
FLEA AND TICK CONTROL FOR DOGS AND PUPPIES 16-33 LBS & OVER 12 WEEKS OF AGE  
FLEA AND TICK CONTROL FOR DOGS AND PUPPIES 34-66 LBS & OVER 12 WEEKS OF AGE  
FLEA AND TICK CONTROL FOR DOGS AND PUPPIES OVER 66 LBS & OVER 12 WEEKS OF AGE

{A large, clear picture of a dog in the weight range for the product as packaged will be on the front panel}

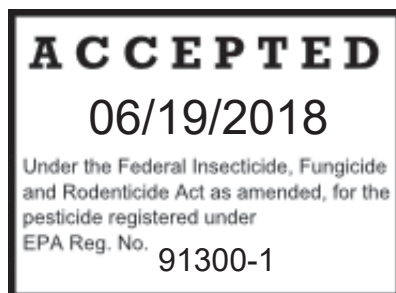
"SMALL" [AND] "Use Only For Dogs 12 weeks and older between 5 & 15 lbs", [OR] "Use Only For Dogs 12 weeks & older and 5 - 15 lbs."  
"MEDIUM" [AND] "Use Only For Dogs 12 weeks and older between 16 & 33 lbs", [OR] "Use Only For Dogs 12 weeks & older and 16 - 33 lbs."  
"LARGE" [AND] "Use Only For Dogs 12 weeks and older between 34 & 66 lbs", [OR] "Use Only For Dogs 12 weeks & older and 34 - 66 lbs."  
"X-LARGE" [AND] "Use Only For Dogs 12 weeks and older over 66 lbs", [OR] "Use Only For Dogs 12 weeks and older over 66 lbs."

{Only 1 of the weight ranges (listed above) per package label}

{Small Dog Packages} 1 Tube Pack = 1 Month Supply [or 1-pak (1 x 1.0 mL)]  
[3 Tube Pack =3 Month Supply [or 3-pak (3 x 1.0 mL)]  
[4 Tube Pack =4 Month Supply [or 4-pak (4 x 1.0 mL)]  
[6 Tube Pack 6 Month Supply [or 6-pak (6 x 1.0 mL) ]  
{Medium Dog Packages} 1 Tube Pack = 1 Month Supply [or 1-pak (1 x 1.5 mL)]  
[3 Tube Pack =3 Month Supply [or 3-pak (3 x 1.5 mL)]  
[4 Tube Pack =4 Month Supply [or 4-pak (4 x 1.5 mL)]  
[6 Tube Pack 6 Month Supply [or 6-pak (6 x 1.5 mL) ]  
{Large Dog Packages} 1 Tube Pack = 1 Month Supply [or 1-pak (1 x 3.0 mL)]  
[3 Tube Pack =3 Month Supply [or 3-pak (3 x 3.0 mL)]  
[4 Tube Pack =4 Month Supply [or 4-pak (4 x 3.0 mL)]  
[6 Tube Pack 6 Month Supply [or 6-pak (6 x 3.0 mL)]  
{Large Dog Packages} 1 Tube Pack = 1 Month Supply [or 1-pak (1 x 4.5 mL)]  
[3 Tube Pack =3 Month Supply [or 3-pak (3 x 4.5 mL)]  
[4 Tube Pack =4 Month Supply [or 4-pak (4 x 4.5 mL)]  
[6 Tube Pack 6 Month Supply [or 6-pak (6 x 4.5 mL) ]

{Number of Applications in package – Only 1 of the above descriptions per package}

**DO NOT USE ON CATS – MAY BE FATAL**



**ACTIVE INGREDIENTS:**

\*Permethrin:.....45.0%

Pyriproxyfen.....5.0%

**OTHER INGREDIENTS:**.....50.0%

**TOTAL:**.....100.0%

\*cis/trans ratio: Max. 55% (±) cis and min. 45% (±) trans

**KEEP OUT OF THE REACH OF CHILDREN  
CAUTION**

**SEE SIDE/BACK PANEL FOR FIRST AID AND ADDITIONAL PRECAUTIONARY STATEMENTS**

**[OR]**

**SEE INSIDE FLAP [OR] FLAP/INSERT FOR ADDITIONAL PRECAUTIONARY STATEMENTS**

Net Contents: {Only the Net Contents appropriate for the package size will appear on final label}

- [0.03 fl. oz. [1-pak]{OR}[1 tube] of 0.03 fl. oz. (1.0 mL)]
- [0.05 fl. oz. [1-pak]{OR}[1 tube] of 0.05 fl. oz. (1.5 mL)]
- [0.10 fl. oz. [1-pak]{OR}[1 tube] of 0.10 fl. oz. (3.0 mL)]
- [0.15 fl. oz. [1-pak]{OR}[1 tube] of 0.15 fl. oz. (4.5 mL)]
- [0.09 fl. oz. [3-pak]{OR}[3 tubes] of 0.03 fl. oz. (1.0 mL/tube)]
- [0.15 fl. oz. [3-pak]{OR}[3 tubes] of 0.05 fl. oz. (1.5 mL/tube)]
- [0.30 fl. oz. [3-pak] [OR] “3 tubes” of 0.10 fl. oz. (3.0 mL/tube)]
- [0.45 fl. oz. [3-pak]{OR} “3 tubes” of 0.15 fl. oz. (4.5 mL/tube)]
- [0.12 fl. oz. [4-pak]{OR}[4 tubes] of 0.03 fl. oz. (1.0 mL/tube)]
- [0.20 fl. oz. [4-pak]{OR}[4 tubes] of 0.05 fl. oz. (1.5 mL/tube)]
- [0.40 fl. oz. [4-pak]{OR}[4 tubes] of 0.10 fl. oz. (3.0 mL/tube)]
- [0.60 fl. oz. [4-pak]{OR}[4 tubes] of 0.15 fl. oz. (4.5 mL/tube)]
- [0.18 fl. oz. [6-pak]{OR}[6 tubes] of 0.03 fl. oz. (1.0 mL/tube)]
- [0.30 fl. oz. [6-pak]{OR}[6 tubes] of 0.05 fl. oz. (1.5 mL/tube)]
- [0.60 fl. oz. [6-pak]{OR}[3 tubes] of 0.10 fl. oz. (3.0 mL/tube)]
- [0.90 fl. oz. [6-pak]{OR}[6 tubes] of 0.15 fl. oz. (4.5 mL/tube)]

**EPA Reg. No. 91300-1**

**EPA Est. No.**

**Manufactured for:**

Promika, LLC  
5000 CentreGreen Way, Suite 100  
Cary, NC 27513

MADE IN THE USA



{A 1.5 cm x 1.5 cm cat prohibition icon will be in a box located at the lower right-hand corner of the front panel in yellow with black images}

{SIDE/BACK PANEL OF CARTON}

### SHIELDTEC PLUS FOR DOGS

[FOR DOGS AND PUPPIES 5-15 LBS AND OVER 12 WEEKS OF AGE]  
[FOR DOGS AND PUPPIES 16-33 LBS AND OVER 12 WEEKS OF AGE]  
[FOR DOGS AND PUPPIES 34-66 LBS AND OVER 12 WEEKS OF AGE]  
[FOR DOGS AND PUPPIES OVER 66 LBS AND OVER 12 WEEKS OF AGE

]

READ ENTIRE LABEL BEFORE EACH USE

USE ONLY ON DOGS OVER 12 WEEKS OF AGE

[USE ONLY ON DOGS AND PUPPIES 5-15 LBS AND OVER 12 WEEKS OF AGE]

[USE ONLY ON DOGS AND PUPPIES 16-33 LBS AND OVER 12 WEEKS OF AGE]

[USE ONLY ON DOGS AND PUPPIES 34-66 LBS AND OVER 12 WEEKS OF AGE]

[USE ONLY ON DOGS AND PUPPIES OVER 66 LBS AND OVER 12 WEEKS OF AGE] {OR}

[Only for Dogs and Puppies 5-15 lbs and over 12 weeks of age]

[Only for Dogs and Puppies 16-33 lbs and over 12 weeks of age]

[Only for Dogs and Puppies 34-66 lbs and over 12 weeks of age]

[Only for Dogs and Puppies over 66 lbs and over 12 weeks of age]

DO NOT USE ON CATS – MAY BE FATAL

{Optional Listing of Tube number and size in package}

{Small Dog Packages} 1 Tube Pack = 1 Month Supply [or 1-pak (1 x 1.0 mL)]

[3 Tube Pack =3 Month Supply [or 3-pak (3 x 1.0 mL)]

[4 Tube Pack =4 Month Supply [or 4-pak (4 x 1.0 mL)]

[6 Tube Pack 6 Month Supply [or 6-pak (6 x 1.0 mL) ]

{Medium Dog Packages} [1 Tube Pack =] “1 Month Supply” [or] 1-pak (1 x 1.5 mL)] [\*]

[3 Tube Pack =] “3 Month Supply” [or] 3-pak (3 x 1.5 mL)] [\*]

[4 Tube Pack =] “4 Month Supply” [or] 4-pak (4 x 1.5 mL)] [\*]

[6 Tube Pack =] “6 Month Supply” [or] 6-pak (6 x 1.5 mL) ][\*]

{Large Dog Packages} 1 Tube Pack = 1 Month Supply [or 1-pak (1 x 3.0 mL)]

[3 Tube Pack =3 Month Supply [or 3-pak (3 x 3.0 mL)]

[4 Tube Pack =4 Month Supply [or 4-pak (4 x 3.0 mL)]

[6 Tube Pack 6 Month Supply [or 6-pak (6 x 3.0 mL)]

{Large Dog Packages} 1 Tube Pack = 1 Month Supply [or 1-pak (1 x 4.5 mL)]

[3 Tube Pack =3 Month Supply [or 3-pak (3 x 4.5 mL)]

[4 Tube Pack =4 Month Supply [or 4-pak (4 x 4.5 mL)]

[6 Tube Pack 6 Month Supply [or 6-pak (6 x 4.5 mL) ]

{Number of Applications in package – Only 1 of above descriptions per package}

### PRECAUTIONARY STATEMENTS

#### HAZARDS TO HUMANS AND DOMESTIC ANIMALS

#### CAUTION

**Hazards to Humans:** Harmful if swallowed. Causes moderate eye irritation. Wash thoroughly with soap and water after handling and before eating, drinking, chewing gum, using tobacco, or using the toilet. Avoid contact with eyes or clothing.

**Hazards to Domestic Animals: FOR EXTERNAL USE ON DOGS ONLY.** Do not use on puppies under 12 weeks of age or less than [5][16][34][66] pounds. Consult a veterinarian before using this product on debilitated, aged, medicated, pregnant, or nursing dogs. Consult a veterinarian before using on dogs with known organ dysfunction. This product is not a substitute for prescribed heartworm preventative. **DO NOT USE ON CATS** or animals other than dogs. Keep cats away from treated dogs for 24 hours. If applied to or ingested by a cat, contact your veterinarian immediately. Cats which actively groom or engage in close physical contact with treated dogs may be at risk of serious harmful effect. Certain medications can interact with pesticides. It is advisable to consult a veterinarian before using this product with ANY other pesticide or drug.

**Adverse Reactions:** Some dogs may be sensitive to ingredients in this product. Adverse reactions in dogs may include skin sensitivity, lethargy, increased pruritus (itchiness), erythema (redness), rash and hair discoloration or hair loss at the application site. Observe the dog following treatments. Sensitivity may occur after using ANY pesticide product for pets. If signs of sensitivity occur, bathe your dog with a mild soap and rinse with large amounts of water. If signs continue, consult a veterinarian immediately. Keep cats away from treated dogs for 24 hours. Adverse reactions in cats could include neurological effects such as inactivity, tremors, and convulsions. If applied to or ingested by a cat, contact your veterinarian immediately.

<b>FIRST AID</b>	
<b>If swallowed:</b>	<ul style="list-style-type: none"> <li>• Call a poison control center or doctor immediately for treatment advice.</li> <li>• Have person sip a glass of water if able to swallow.</li> <li>• Do not induce vomiting unless told to do so by the poison control center or doctor.</li> <li>• Do not give anything by mouth to an unconscious person.</li> </ul>
<b>If in eyes:</b>	<ul style="list-style-type: none"> <li>• Hold eye open and rinse slowly and gently with water for 15-20 minutes.</li> <li>• Remove contact lenses, if present, after the first 5 minutes, then continue rinsing eye.</li> <li>• Call a poison control center or doctor for treatment advice.</li> </ul>
<b>HOT LINE NUMBER</b>	
Have the product container or label with you when calling a Poison Control Center or doctor, or when going for treatment. You may also contact 1-844-685-9173 for emergency medical treatment.	

**ENVIRONMENTAL HAZARDS**

This product is extremely toxic to fish. Do not add directly to water. Do not contaminate water when disposing of product or packaging.

**DIRECTIONS FOR USE**

It is a violation of Federal law to use this product in a manner inconsistent with its labeling. To prevent harm to you and your dog, read entire label before each use. Separate the treated dog from all other dogs and cats for 24 hours after treatment has been applied.

<p><b>USE RESTRICTIONS:</b>          DO NOT USE ON CATS OR KITTENS – MAY BE FATAL          USE ONLY ON DOGS OR PUPPIES [5-15][16-33][34-66][OVER 66] POUNDS AND 12 WEEKS OF AGE OR OLDER.          DO NOT ALLOW CHILDREN TO APPLY THIS SPRODUCT.          [Do not apply to dogs/puppies weighing less than 5 lbs. {for smallest size dog package only.}]          Do not apply more than one tube per treatment on dog regardless of the dog’s weight.          Do not reapply for [30 days][4 weeks][one month].          Do not get in the dog’s eyes or mouth and do not allow your dog/puppy to ingest this product.</p>
--

**HOW TO APPLY:**

**{Only one of the following descriptions per label, based upon dog size, will be on label}**

{Dogs 5 to 15 lbs}

**[Use only for Dogs Between 5 [-] [&] 15 lbs. and 12 weeks and older:** {1.0 mL tubes} Apply one tube (1.0 mL) of product solution as a spot or stripe to the dog’s back between the shoulder blades. Do not use on dogs less than 5 pounds. {statement #8 below will immediately follow this text}}

{Alternate language – for combining “how to apply” and “how to open” tube type}

**[Use Only for Dogs 5 [-] [to] 15 lbs. and 12 weeks and older:** {1.0 mL tubes}{Note to reviewer: wording for tube type used will be inserted here taken from one of the options listed below, #1 through #7} Apply one tube (1.0 mL) of product solution as a spot to the skin at three different locations along the



dog's back between the shoulder blades and base of the tail. Do not use on dogs less than 5 pounds. Squeeze tube to apply all of the solution to the dog's skin.]

{Dogs 16 to 33 lbs}

**[Use Only on Dogs Between 16 & 33 lbs and 12 weeks and older:** {1.5 mL tubes} Apply one tube (1.5 mL) of product solution as a spot to the skin at three different locations along the dog's back between the shoulder blades and base of the tail. {statement #8 below will immediately follow this text}]

{Alternate language – for combining “how to apply” and “how to open” tube type}

**[Use Only on Dogs 16[-] [to] 33 lbs and 12 weeks and older:** {1.5 mL tubes}{Note to reviewer: wording for tube type used will be inserted here taken from one of the options listed below, #1 through #7} Apply one tube (1.5 mL) of product solution as a spot to the skin at three different locations along the dog's back between the shoulder blades and base of the tail. Squeeze tube to apply all of the solution to the dog's skin.]

{Dogs 34 to 66 lbs}

**[Use only on dogs between 34 & 66 lbs and 12 weeks and older:** {3 mL tubes} Apply approximately half of the tube (1.5 mL) of product solution as a spot or stripe to the skin to the dog's back between the shoulder blades and apply the rest of the tube's contents (1.5 mL) as a spot or stripe to the dog's back directly in front of the base of the tail. {statement #8 below will immediately follow this text}]

[ {OR}

{3 mL tube} Apply the entire tube (3.0 mL) as a continuous stripe on the dog's back starting between the shoulder blades and ending directly in front of the base of the tail. {statement #8 below will immediately follow this text}]

{Alternate language – for combining “how to apply” and “how to open” tube type}

**[Use Only on Dogs 34[-] [to] 66 lbs and 12 weeks and older:** {3 mL tubes} {Note to reviewer: wording for tube type used will be inserted here taken from one of the options listed below, #1 through #7} Apply approximately half of the tube (1.5 mL) of product solution as a spot or stripe to the skin on the dog's back between the shoulder blades and apply the rest of the tube's contents (1.5 mL) as a spot or stripe to the skin on the dog's back directly in front of the base of the tail. Squeeze tube to apply all of the solution to the dog's skin.] {OR}

{3 mL tube} {Note to reviewer: wording for tube type used will be inserted here taken from one of the options listed below, #1 through #7} Apply the entire tube (3.0 mL) as a spot to the skin at three or more different locations along the dog's back between the shoulder blades and base of the tail. Squeeze tube to apply all of the solution to the dog's skin.]

{Dogs over 66 lbs.}

**[Use Only for Dogs Over 66 lbs and 12 weeks and older:** {4.5 mL tubes} Apply approximately half of the tube (2.25 mL) of product solution as a spot or stripe to the dog's back between the shoulder blades and apply the rest of the tube's contents (2.25 mL) as a spot or stripe to the dog's back directly in front of the base of the tail. DO NOT USE MORE THAN A SINGLE 4.5 mL DOSE REGARDLESS OF DOG SIZE. {statement #8 below will immediately follow this text}] {OR}

{4.5 mL tubes} Apply the entire tube (4.5 mL) as a continuous stripe on the dog's back starting between the shoulder blades and ending directly in front of the base of the tail. DO NOT USE MORE THAN A SINGLE 4.5 mL DOSE REGARDLESS OF DOG SIZE. {statement #8 below will immediately follow this text}

{Alternate language – for combining “how to apply” and “how to open” tube type}

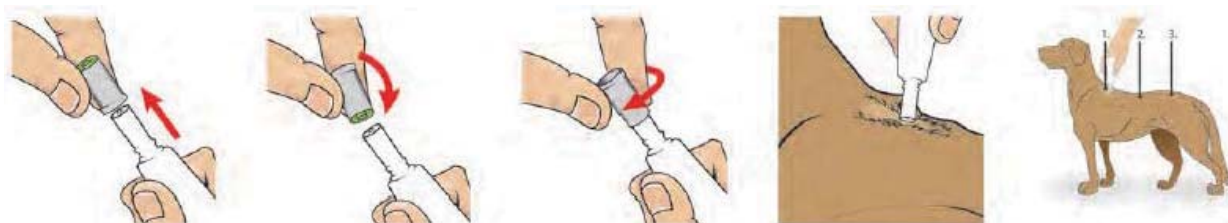
**[Use Only for Dogs Over 66 lbs and 12 weeks and older:** }4.5 mL tubes} {Note to reviewer: wording for tube type used will be inserted here taken from one of the options listed below, #1 through #7} Apply approximately half of the tube (2.25 mL) of product solution as a spot or stripe to the skin on the dog's back between the shoulder blades and apply the rest of the tube's contents (2.25 mL) as a spot or stripe to the skin on the dog's back directly in front of the base of the tail. DO NOT USE MORE THAN A SINGLE 4.5 mL DOSE REGARDLESS OF DOG SIZE. Squeeze tube to apply all of the solution to the dog's skin.

{4.5 mL tubes} {Note to reviewer: wording for tube type used will be inserted here taken from one of the options listed below, #1 through #7} Apply the entire tube (4.5 mL) as a spot to the skin at three or more different locations along the dog's back between the shoulder blades and base of the tail. DO NOT USE MORE THAN A 4.5 mL DOSE REGARDLESS OF DOG SIZE. Squeeze tube to apply all of the solution to the dog's skin.

{Optional wording to be inserted above based upon packaging tube type}

**{1. FOR TWIST TUBES}** Remove product from package. Holding tube upright, twist off cap. Invert tube over dog and use open end to part dog's hair.

**{2. FOR RATCHET TUBES}** Remove product tube from package. Holding tube upright, pull off cap. Turn the cap around and place opposite end of cap back on tube. Twist cap to break seal, remove cap from tube. Invert tube over dog and use open end to part dog's hair.



{Pictorial for Ratchet Tubes/ Drawing of how to apply}

**{3. FOR TUBES IN BLISTER CARD}** Remove product tube from package. Holding tube with the notched end pointing up and away from applicator's and dog's face and body, snap or cut off narrow end at notches. Invert tube over dog and use open end to part dog's hair.

**{4. FOR FLAT CARD UNIT-DOSE PACKAGING}** Separate cards along the perforated line. Holding separated card by its wide end with narrow end pointed up and away from applicator's and dog's face and body, cut along dotted line. Invert card over dog and use narrow end of the card to part dog's hair.

**{5 FOR FLAT CARD UNIT DOSE PACKAGING}** [For push pin type tube] Remove one product tube from the card. With cap end pointed up and away from applicator's and dog's face and body, depress cap to pierce tube end. Carefully remove cap and invert tube over dog, with tube close to dog's skin.

**{6. FOR FOLDING CARD OR TABBED CARD UNIT-DOSE PACKAGING}**: Remove product tab by tearing along perforation. Holding tab with tube end pointed up and away from applicator's and dog's face and body, cut along dotted line. Invert tab over dog and use narrow end of the card to part dog's hair.

**{7. BLISTER CARD WITH TRI-LAYER TUBES}** Remove blister card from package. Fold along perforation between tubes and tear off one tube. Return unused tubes to package. Holding tube with notched end pointing up and away from applicator's and dog's face and body, snap off narrow end at notches. Invert tube over dog and use open end to part dog's hair.

**{8. FOR PERFORATED 3-PAK TUBE STRIPS WITH BREAKWAY TABS ON EACH TUBE}** Separate one tube at a time from the 3-pak strip, returning unused tubes to package. Holding tube upright and away from applicator's and dog's face and body, snap the tip of the tube open. Invert tube over dog and use open end to part dog's hair.

**{9. FOR SQUEEZE ON TUBES}** Remove product tubes from the package. [Separate one tube from the others.] Hold the tube with notched end pointing up and away from you and your dogs's face and body. Use scissors to cut off the narrow end at the notches along the lines. Invert tube over dog and use open end to part dog's hair.

**{10. FOR SNAP BACK TUBES}** Remove tube[s] from packaging. Using one tube, hold the tube with the narrow end pointing up. [Snap the outline of the tip back to allow access to the [tube]]. [Snap [Cut] the tube tip [backwards] [across the marked line] to allow access to the tube]]. [Holding tube away from your



and your dog's eyes.] [Snap][Cut] the tube tip [at notched line] to open.] Invert tube over dog and use open end to part dog's hair.



**SHIELDTEC PLUS FOR DOGS** is an effective and easy to use product. Treating your dog with this product prevents flea eggs from developing into biting adults for up to [4 months] [123 days]. As with all flea and tick control products, this product should be used as part of a total flea and tick management program. Use other products registered for residential area control aimed at reducing flea populations in the dog's environment (bedding, carpets, kennel, yard). Consult your veterinarian for flea and tick spot-on product recommendations.

### STORAGE AND DISPOSAL

Do not contaminate water, food, or feed by storage or disposal.

**Pesticides Storage:** Store this in a cool, dry (preferably locked) place away from heat and open flame, in an area inaccessible to children and animals. Protect from freezing.

**Pesticide Disposal and Container Handling:** Non-refillable container. If empty: Do not reuse or refill this container. Place in trash or offer recycling if available. If partly filled: Call your local solid waste agency for disposal instructions. Never place unused product down any indoor or outdoor drain.

### NOTICE OF WARRANTY

NOTE: Seller warrants this product complies with the specifications expressed in this label. To the extent consistent with applicable law, Seller makes no other warranties and disclaims all other warranties, express or implied, including but not limited to warranties of merchantability and fitness for the intended purpose. To the extent consistent with applicable law, Seller's liability or default, breach, or failure under this label shall be limited to the amount of the purchase price. To the extent consistent with applicable law, Seller shall have no liability for consequential damages.

**SEE [INSIDE FLAP AND] INSERT FOR FIRST AID AND ADDITIONAL PRECAUTIONARY STATEMENTS**

**KEEP OUT OF THE REACH OF CHILDREN  
CAUTION**

**EPA Reg. No. 91300-1**

**Manufactured for:**

Promika, LLC

5000 CentreGreen Way, Suite 100

Cary, NC 27513

**EPA Est. No.**

{A Side Effects box will be located immediately above the cat warning box on the back label panel}

**SIDE EFFECTS**

Monitor your dog after application. Side effects may include signs of skin irritation such as redness, scratching, or other signs of discomfort. Gastrointestinal signs such as vomiting or diarrhea have also been reported. If these or other side effects occur, consult your veterinarian or call 1-844-685-9173.

{A 1.5 cm X 1.5 cm cat prohibition icon and warning text in a box will be located at the lower right-hand corner of the back panel in yellow with black images and text.}



{OPTIONAL INSIDE FLAP – Contains information not located on SIDE/BACK panel or duplication of information}

## SHIELDTEC PLUS FOR DOGS

READ ENTIRE LABEL BEFORE EACH USE

[USE ONLY ON DOGS AND PUPPIES 5-15 LBS & OVER 12 WEEKS OF AGE]

[USE ONLY ON DOGS AND PUPPIES 16-33 LBS & OVER 12 WEEKS OF AGE]

[USE ONLY ON DOGS AND PUPPIES 34-66 LBS & OVER 12 WEEKS OF AGE]

[USE ONLY ON DOGS AND PUPPIES OVER 66 LBS & OVER 12 WEEKS OF AGE]

DO NOT USE ON CATS – MAY BE FATAL

### PRECAUTIONARY STATEMENTS

#### HAZARDS TO HUMANS AND DOMESTIC ANIMALS

##### CAUTION

**Hazards to Humans:** Harmful if swallowed. Causes moderate eye irritation. Wash thoroughly with soap and water after handling and before eating, drinking, chewing gum, using tobacco, or using the toilet. Avoid contact with eyes or clothing.

**Hazards to Domestic Animals: FOR EXTERNAL USE ON DOGS ONLY.** Do not use on puppies under 12 weeks of age or less than [5][16][34][66] pounds. Consult a veterinarian before using this product on debilitated, aged, medicated, pregnant, or nursing dogs. Consult a veterinarian before using on dogs with known organ dysfunction. This product is not a substitute for prescribed heartworm preventative. **DO NOT USE ON CATS** or animals other than dogs. Keep cats away from treated dogs for 24 hours. If applied to or ingested by a cat, contact your veterinarian immediately. Cats which actively groom or engage in close physical contact with treated dogs may be at risk of serious harmful effect. Certain medications can interact with pesticides. It is advisable to consult a veterinarian before using this product with ANY other pesticide or drug.

**Adverse Reactions:** Some dogs may be sensitive to ingredients in this product. Adverse reactions in dogs may include skin sensitivity, lethargy, increased pruritus (itchiness), erythema (redness), rash and hair discoloration or hair loss at the application site. Observe the dog following treatments. Sensitivity may occur after using ANY pesticide product for pets. If signs of sensitivity occur, bathe your dog with a mild soap and rinse with large amounts of water. If signs continue, consult a veterinarian immediately. Keep cats away from treated dogs for 24 hours. Adverse reactions in cats could include neurological effects such as inactivity, tremors, and convulsions. If applied to or ingested by a cat, contact your veterinarian.

FIRST AID	
<b>If swallowed:</b>	<ul style="list-style-type: none"><li>• Call a poison control center or doctor immediately for treatment advice.</li><li>• Have person sip a glass of water if able to swallow.</li><li>• Do not induce vomiting unless told to do so by the poison control center or doctor.</li><li>• Do not give anything by mouth to an unconscious person.</li></ul>
<b>If in eyes:</b>	<ul style="list-style-type: none"><li>• Hold eye open and rinse slowly and gently with water for 15-20 minutes.</li><li>• Remove contact lenses, if present, after the first 5 minutes, then continue rinsing eye.</li><li>• Call a poison control center or doctor for treatment advice.</li></ul>
<b>HOT LINE NUMBER</b> Have the product container or label with you when calling a Poison Control Center or doctor, or when going for treatment. You may also contact 1-844-685-9173 for emergency medical treatment.	

## ENVIRONMENTAL HAZARDS

This product is extremely toxic to fish. Do not add directly to water. Do not contaminate water when disposing of product or packaging.

## STORAGE AND DISPOSAL

Do not contaminate water, food, or feed by storage or disposal.

**Pesticides Storage:** Store this in a cool, dry (preferably locked) place away from heat and open flame, in an area inaccessible to children and animals. Protect from freezing.

**Pesticide Disposal and Container Handling:** Non-refillable container. If empty: Do not reuse or refill this container. Place in trash or offer recycling if available. If partly filled: Call your local solid waste agency for disposal instructions. Never place unused product down any indoor or outdoor drain.

## KEEP OUT OF THE REACH OF CHILDREN CAUTION

## SEE INSERT FOR ADDITIONAL PRECAUTIONARY STATEMENTS

{An optional Side Effects box will be located immediately above the cat warning box on the back label panel.}

### [SIDE EFFECTS

Monitor your dog after application. Side effects may include signs of skin irritation such as redness, scratching, or other signs of discomfort. Gastrointestinal signs such as vomiting or diarrhea have also been reported. If these or other side effects occur, consult your veterinarian or call 1-844-685-9173.]

{A 1.5 cm X 1.5 cm cat prohibition icon and warning text in a box will be located at the lower right-hand corner of the back panel in yellow with black images and text.}



{OPTIONAL: PRODUCT INSERT #1 for inclusion with product tubes}

## SHIELDTEC PLUS FOR DOGS

**READ ENTIRE LABEL BEFORE EACH USE**

**USE ONLY FOR DOGS 5 TO 15 LBS [16 TO 33 LBS][34 TO 66 LBS][OVER 66 LBS] and OVER 12 WEEKS OF AGE**

**KEEP OUT OF REACH OF CHILDREN**

**CAUTION**

### ACTIVE INGREDIENTS:

\*Permethrin:.....45.0%

Pyriproxyfen.....5.0%

**OTHER INGREDIENTS:**.....50.0%

**TOTAL:**.....100.0%

\*cis/trans ratio: Max 55%      (±) cis and min 45%      (±) trans

**SHIELDTEC PLUS FOR DOGS** is an effective and easy to use product. Treating your dog with this product prevents flea eggs from developing into biting adults for up to [4 months][123 days]. As with all flea and tick control products, this product should be used as part of a total flea and tick management program aimed at reducing flea populations in the dog's environment (bedding, carpets, kennel, yard). Use other products registered for residential area control. Consult your veterinarian, for flea and tick spot-on product recommendations.

### DIRECTIONS FOR USE

It is a violation of Federal Law to use this product in a manner inconsistent with its labeling.

To prevent harm to you and your dog, read entire label before each use. Separate the treated dog from all other dogs and cats for 24 hours after treatment has been applied.

### USE RESTRICTIONS:

DO NOT USE ON CATS OR KITTENS – MAY BE FATAL

USE ONLY ON DOGS OR PUPPIES [5-15][16-33][34-66][OVER 66] POUNDS AND 12 WEEKS OF AGE OR OLDER

DO NOT ALLOW CHILDREN TO APPLY THIS PRODUCT

[Do not apply to dogs/puppies weighing less than 5 lbs. {for smallest size dog package only}]

Do not apply more than one tube per treatment on dog regardless of the dog's weight.

Do not reapply for [30 days][4 weeks][one month].

Do not get in the dog's eyes or mouth and do not allow your dog/puppy to ingest this product.

### HOW TO APPLY:

[Only one of following descriptions per label, based upon dog size.]

{Dogs 5 to 15 lbs}

**[Use only for Dogs Between 5 [-] [&] 15 lbs. and 12 weeks and older:** {1.0 mL tubes} Apply one tube (1.0 mL) of product solution as a spot or stripe to the dog's back between the shoulder blades. Do not use on dogs less than 5 pounds. {statement #8 below will immediately follow this text}]

{OR Alternate language – for combining “how to apply” and “how to open” tube type}

**[Use Only for Dogs 5 – [&] 15 lbs. and 12 weeks and older:** {1.0 mL tubes}{ Note to reviewer: wording for tube type used will be inserted here taken from one of the options listed below, #1 through #7} Apply one tube (1.0 mL) of product solution as a spot to the skin at three different locations along the dog's back between the shoulder blades and base of the tail. Do not use on dogs less than 5 pounds. Squeeze tube to apply all of the solution to the dog's skin.]

{Dogs 16 to 33 lbs}

**[Use only on dogs between 16 & 33 lbs and 12 weeks and older:** {1.5 mL tubes} Apply one tube (1.5 mL) of product solution as a spot to the skin at three different locations along the dog's back between the shoulder blades and base of the tail. {statement #8 below will immediately follow this text}]

{OR Alternate language – for combining “how to apply” and “how to open” tube type}

**[Use Only on Dogs 16[-] [to] 33 lbs and 12 weeks and older:** {1.5 mL tubes} {Note to reviewer: wording for tube type used will be inserted here taken from one of the options listed below, #1 through #7} Apply one tube (1.5 mL) of product solution as a spot to the skin at three different locations along the dog's back between the shoulder blades and base of the tail. Squeeze tube to apply all of the solution to the dog's skin.]

{Dogs 34 to 66 lbs}

**[Use only on dogs between 34 & 66 lbs and 12 weeks and older:** {3 mL tubes} Apply approximately half of the tube (1.5 mL) of product solution as a spot or stripe to the skin to the dog's back between the shoulder blades and apply the rest of the tube's contents (1.5 mL) as a spot or stripe to the dog's back directly in front of the base of the tail. { statement #8 below will immediately follow this text} {OR}

[[{3 mL tube} Apply the entire tube (3.0 mL) as a continuous stripe on the dog's back starting between the shoulder blades and ending directly in front of the base of the tail. {statement #8 below will immediately follow this text}]

{OR Alternate language – for combining “how to apply” and “how to open” tube type}

**[Use Only on Dogs 34[-] [to] 66 lbs and 12 weeks and older:** {3 mL tubes} {Note to reviewer: wording for tube type used will be inserted here taken from one of the options listed below, #1 through #7} Apply approximately half of the tube (1.5 mL) of product solution as a spot or stripe to the skin on the dog's back between the shoulder blades and apply the rest of the tube's contents (1.5 mL) as a spot or stripe to the skin on the dog's back directly in front of the base of the tail. Squeeze tube to apply all of the solution to the dog's skin.] **{OR}**

[[{3 mL tube} { Note to reviewer: wording for tube type used will be inserted here taken from one of the options listed below, #1 through #7} Apply the entire tube (3.0 mL) as a spot to the skin at three or more different locations along the dog's back between the shoulder blades and base of the tail. Squeeze tube to apply all of the solution to the dog's skin.]

{Dogs over 66 lbs.}

**[Use Only for Dogs Over 66 lbs and 12 weeks and older:** {4.5 mL tubes} Apply approximately half of the tube (2.25 mL) of product solution as a spot or stripe to the dog's back between the shoulder blades and apply the rest of the tube's contents (2.25 mL) as a spot or stripe to the dog's back directly in front of the base of the tail. DO NOT USE MORE THAN A SINGLE 4.5 mL DOSE REGARDLESS OF DOG SIZE. {statement #8 below will immediately follow this text}]{**OR}**

[[{4.5 mL tubes} Apply the entire tube (4.5 mL) as a continuous stripe on the dog's back starting between the shoulder blades and ending directly in front of the base of the tail. DO NOT USE MORE THAN A SINGLE 4.5 mL DOSE REGARDLESS OF DOG SIZE. {statement #8 below will immediately follow this text}]

{OR Alternate language – for combining “how to apply” and “hot to open” tube type}

**[Use Only for Dogs Over 66 lbs and 12 weeks and older:** {4.5 mL tubes} {Note to reviewer: wording for tube type used will be inserted here taken from one of the options listed below, #1 through #7} Apply approximately half of the tube (2.25 mL) of product solution as a spot or stripe to the skin on the dog's back between the shoulder blades and apply the rest of the tube's contents (2.25 mL) as a spot or stripe to the skin on the dog's back directly in front of the base of the tail. DO NOT USE MORE THAN A SINGLE 4.5 mL DOSE REGARDLESS OF DOG SIZE. Squeeze tube to apply all of the solution to the dog's skin.]

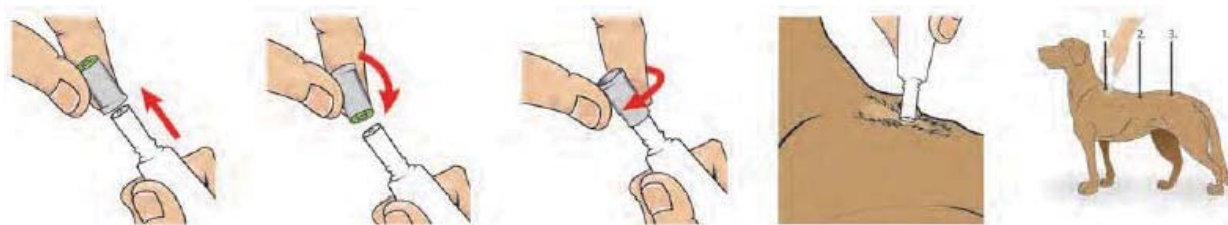


{4.5 mL tubes} {Note to reviewer: wording for tube type used will be inserted here taken from one of the options listed below, #1 through #7} Apply the entire tube (4.5 mL) as a spot to the skin at three or more different locations along the dog's back between the shoulder blades and base of the tail. DO NOT USE MORE THAN A SINGLE 4.5 mL DOSE REGARDLESS OF DOG SIZE. Squeeze tube to apply all of the solution to the dog's skin.

{Wording for the insertion above, based upon packaging tube type}

**{1 FOR TWIST TUBES}**: Remove product from package. Holding tube upright, twist off cap. Invert tube over dog and use open end to part dog's hair.

**{2 FOR RATCHET TUBES}**: Remove product tube from package. Holding tube upright, pull off cap. Turn the cap around and place opposite end of cap back on tube. Twist cap to break seal, remove cap from tube. Invert tube over dog and use open end to part dog's hair.



[Pictorial for Ratchet Tubes/ Drawing of how to apply]

**{3 FOR TUBES IN BLISTER CARD}**: Remove product tube from package. Holding tube with the notched end pointing up and away from applicator's and dog's face and body, snap or cut off narrow end at notches. Invert tube over dog and use open end to part dog's hair.

**{4 FOR FLAT CARD UNIT-DOSE PACKAGING}**: Separate cards along the perforated line. Holding separated card by its wide end with narrow end pointed up and away from applicator's and dog's face and body, cut along dotted line. Invert card over dog and use narrow end of the card to part dog's hair.

**{5 FOR FLAT CARD UNIT DOSE PACKAGING}**: [For push pin type tube] Remove one product tube from the card. With cap end pointed up and away from applicator's and dog's face and body, depress cap to pierce tube end. Carefully remove cap and invert tube over dog, with tube close to dog's skin.

**{6 FOR FOLDING CARD OR TABBED CARD UNIT-DOSE PACKAGING}**: Remove product tab by tearing along perforation. Holding tab with tube end pointed up and away from applicator's and dog's face and body, cut along dotted line. Invert tab over dog and use narrow end of the card to part dog's hair.

**{7 BLISTER CARD WITH TRI-LAYER TUBES}**: Remove product tube(s) from package. Fold along perforation between tubes and tear off one tube. {Return unused tubes to package} Holding tube with notched end pointing up and away from applicator's and dog's face and body, snap off narrow end at notches. Invert tube over dog and use open end to part dog's hair.

**{8 FOR PERFORATED 3-PAK TUBE STRIPS WITH BREAKWAY TABS ON EACH TUBE}**: Separate one tube at a time from the 3-pak strip. Holding tube upright and away from applicator's and dog's face and body, snap the tip of the tube open. Invert tube over dog and use open end to part dog's hair.

**{9 FOR SQUEEZE ON TUBES}**: Remove product tubes from the package. [Separate one tube from the others.] Hold the tube with notched end pointing up and away from the face and body [of applicator and dog]. Use scissors to cut off the narrow end at the notches along the lines. Invert tube over dog and use open end to part dog's hair.

**{10 FOR SNAP BACK TUBES }**: Remove tube[s] from packaging. Using one tube, hold the tube with the narrow end pointing up. [Snap the outline of the tip back to allow access to the [dotted tip] [tube]]. [Snap [Cut] the tube tip [backwards] [across the marked line] [to allow access to the] [dotted tip] [notches][tube]].

[Holding tube away from your and your dog's eyes.] [[Snap]][Cut] the tube tip [at notched line] to open.]  
 Invert tube over dog and use open end to part dog's hair.



## STORAGE AND DISPOSAL

Do not contaminate water, food, or feed by storage or disposal.

**Pesticides Storage:** Store this in a cool, dry (preferably locked) place away from heat and open flame, in an area inaccessible to children and animals. Protect from freezing.

**Pesticide Disposal and Container Handling:** Non-refillable container. If empty: Do not reuse or refill this container. Place in trash or offer recycling if available. If partly filled: Call your local solid waste agency for disposal instructions. Never place unused product down any indoor or outdoor drain.

## PRECAUTIONARY STATEMENTS

### HAZARDS TO HUMANS AND DOMESTIC ANIMALS

#### CAUTION

**Hazards to Humans:** Harmful If swallowed or absorbed through the skin. Avoid contact with the skin, eyes, or clothing. Causes moderate eye irritation. Wash thoroughly with soap and water after handling and before eating, drinking, chewing gum, using tobacco, or using the toilet. Remove and wash contaminated clothing before reuse.

**Hazards to Domestic Animals: FOR EXTERNAL USE ON DOGS ONLY.** Do not use on puppies under 12 weeks of age or less than [5][16][34][66] pounds. Consult a veterinarian before using this product on debilitated, aged, medicated, pregnant, or nursing dogs. Consult a veterinarian before using on dogs with known organ dysfunction. This product is not a substitute for prescribed heartworm preventative. **DO NOT USE ON CATS** or animals other than dogs. Keep cats away from treated dogs for 24 hours. If applied to or ingested by a cat, contact your veterinarian immediately. Cats which actively groom or engage in close physical contact with treated dogs may be at risk of serious harmful effect. Certain medications can interact with pesticides. It is advisable to consult a veterinarian before using this product with ANY other pesticide or drug.

## FIRST AID

<b>If swallowed:</b>	<ul style="list-style-type: none"> <li>• Call a poison control center or doctor immediately for treatment advice.</li> <li>• Have person sip a glass of water if able to swallow.</li> <li>• Do not induce vomiting unless told to do so by the poison control center or doctor.</li> <li>• Do not give anything by mouth to an unconscious person.</li> </ul>
<b>If in eyes:</b>	<ul style="list-style-type: none"> <li>• Hold eye open and rinse slowly and gently with water for 15-20 minutes.</li> <li>• Remove contact lenses, if present, after the first 5 minutes, then continue rinsing eye.</li> <li>• Call a poison control center or doctor for treatment advice.</li> </ul>

### HOT LINE NUMBER

Have the product container or label with you when calling a Poison Control Center or doctor, or when going for treatment. You may also contact 1-844-685-9173 for emergency medical treatment.

**Adverse Reactions:** Some dogs may be sensitive to ingredients in this product. Adverse reactions in dogs may include skin sensitivity, lethargy, increased pruritus (itchiness), erythema (redness), rash and hair discoloration or hair loss at the application site. Observe the dog following treatments. Sensitivity may occur after using ANY pesticide product for pets. If signs of sensitivity occur, bathe your dog with a mild soap and rinse with large amounts of water. If signs continue, consult a veterinarian immediately. Keep cats away from treated dogs for 24 hours. Adverse reactions in cats could include neurological effects such as inactivity, tremors, and convulsions. If applied to or ingested by a cat, contact your veterinarian.

### ENVIRONMENTAL HAZARDS

This product is extremely toxic to fish. Do not add directly to water. Do not contaminate water when disposing of product or packaging

### NOTICE OF WARRANTY

NOTE: Seller warrants this product complies with the specifications expressed in this label. To the extent consistent with applicable law, Seller makes no other warranties and disclaims all other warranties, express or implied, including but not limited to warranties of merchantability and fitness for the intended purpose. To the extent consistent with applicable law, Sellers liability or default, breach, or failure under this label shall be limited to the amount of the purchase price. To the extent consistent with applicable law, Seller shall have no liability for consequential damages.

EPA Reg. No. 91300-1  
Manufactured for:  
Promika, LLC  
5000 CentreGreen Way, Suite 100  
Cary, NC 27513

EPA Est. No.

{A Side Effects box will be located immediately above the cat warning box on the back label panel of insert}

### SIDE EFFECTS

Monitor your dog after application. Side effects may include signs of skin irritation such as redness, scratching, or other signs of discomfort. Gastrointestinal signs such as vomiting or diarrhea have also been reported. If these or other side effects occur, consult your veterinarian or call 1-844-685-9173



{A 1.5 cm x 1.5 cm cat prohibition icon in a box will be located at the lower right-hand corner of the insert in yellow with black images}

**{OPTIONAL: PRODUCT INSERT – Monthly Reminder {for inclusion with product tubes}}**

{Printed on approximately 3"x4" peel off paper, located inside package – not visible from outside}

**SHIELDTEC PLUS FOR DOGS**

Use these calendar stickers to remind you when your dog is due for it's next monthly application.



{A 1.5cm x 1.5cm cat prohibition icon in a box will be located at the lower right-hand corner of the insert in yellow with black images}

<b>Monthly Sticker</b>	<b>Monthly Sticker</b>	<b>Monthly Sticker</b>	<b>Monthly Sticker</b>
<b>Do Not Use On Cats</b>	<b>Do Not Use On Cats</b>	<b>Do Not Use On Cats</b>	<b>Do Not Use On Cats</b>
<b>Month 1</b> <b>Month 4</b>	<b>Month 2</b>	<b>Month 3</b>	

{One sticker if one tube in package; Two stickers if two tubes in package; Three stickers if three tubes in package; Four stickers if four tubes in package}

{OPTIONAL PRODUCT INSERT #2 (for inclusion with product tubes)}

**SHIELDTEC PLUS FOR DOGS**

- [1.0 mL for Dogs 12 Weeks and Older Weighing 5 to 15 lbs]
- [1.5 mL for Dogs 12 Weeks and Older Weighing 16 to 33 lbs]
- [3.0 mL for Dogs 12 Weeks and Older Weighing 34 to 66 lbs]
- [4.5 mL for Dogs 12 Weeks and Older Weighing Over 66 lbs]

**KEEP OUT OF REACH OF CHILDREN  
CAUTION**

**ACTIVE INGREDIENTS:**

\*Permethrin:.....45.0%  
Pyriproxyfen.....5.0%

**OTHER INGREDIENTS:**.....50.0%

**TOTAL:**.....100.0%

\*cis/trans ratio: Max 55%      (±) cis and min 45%      (±) trans

**DIRECTIONS FOR USE**

It is a violation of Federal law to use this product in a manner inconsistent with its labeling.

To prevent harm to you and your dog, read entire label before each use. Separate the treated dog from all other dogs and cats for 24 hours after treatment has been applied.

**USE RESTRICTIONS:**

DO NOT USE ON CATS OR KITTENS – MAY BE FATAL

USE ONLY ON DOGS OR PUPPIES [5-15][16-33][34-66][OVER 66] POUNDS AND 12 WEEKS OF AGE OR OLDER.

DO NOT ALLOW CHILDREN TO APPLY THIS PRODUCT

[Do not apply to dogs/puppies weighing less than 5 lbs {for smallest size dog package only}]

Do not apply more than one tube per treatment on dog regardless of the dog's weight.

Do not reapply for [30 days][4 weeks][one month].

Do not get in the dog's eyes or mouth and do not allow your dog/puppy to ingest this product.

{One of the following descriptions per label, based upon dog size.}

**Use only for Dogs Between 5 [-] [&] 15 lbs. and 12 weeks and older:**

{1.0 mL tubes}

Apply one tube (1.0 mL) of product solution as a spot or stripe to the dog's back between the shoulder blades. Do not use on dogs less than 5 pounds. {statement #8 below will immediately follow this text}

{Dogs 16 to 33 lbs}

**Use only on dogs between 16 & 33 lbs and 12 weeks and older:**

{1.5 mL tubes}

Apply one tube (1.5 mL) of product solution as a spot to the skin at three different locations along the dog's back between the shoulder blades and base of the tail. { statement #8 below will immediately follow this text}]

{Dogs 34 to 66 lbs}

**Use only on dogs between 34 & 66 lbs and 12 weeks and older:**

{3 mL tubes}

[Apply approximately half of the tube (1.5 mL) of product solution as a spot or stripe to the skin to the dog's back between the shoulder blades and apply the rest of the tube's contents (1.5 mL) as a spot or stripe to the dog's back directly in front of the base of the tail. {statement #8 below will immediately follow this text}] **{OR}**

[Apply the entire tube (3.0 mL) as a continuous stripe on the dog's back starting between the shoulder blades and ending directly in front of the base of the tail. {statement #8 below will immediately follow this text}]

{Dogs over 66 lbs.}

**Use Only for Dogs Over 66 lbs and 12 weeks and older:**

{4.5 mL tubes}

[Apply approximately half of the tube (2.25 mL) of product solution as a spot or stripe to the dog's back between the shoulder blades and apply the rest of the tube's contents (2.25 mL as a spot or stripe to the dog's back directly in front of the base of the tail. **DO NOT USE MORE THAN A SINGLE 4.5 mL DOSE REGARDLES OF DOG SIZE.** {statement #8 below will immediately follow this text}]{**OR**}

[Apply the entire tube (4.5 mL) as a continuous stripe on the dog's back starting between the shoulder blades and ending directly in front of the base of the tail. **DO NOT USE MORE THAN A SINGLE 4.5 mL DOSE REGARDLESS OF DOG SIZE.** {statement #8 below will immediately follow this text }]

**HOW TO APPLY:**

**FOR PERFORATED 3-PAK TUBE STRIPS WITH BREAKWAY TABS ON EACH TUBE:** Separate one tube at a time from the 3-pak perforated strip. Holding tube upright and away from face and body, snap the tip of the tube open. Invert tube over dog and use open end to part dog's hair. Squeeze tube firmly to apply all of the solution to the dog's skin.

{Optional Pictorial/Drawing of how to apply}

**SHIELDTEC PLUS FOR DOGS** is an effective and easy to use product. Treating your dog with this product prevents flea eggs from developing into biting adults for up to [4 months] 123 days. As with all flea and tick control products, this product should be used as part of a total flea and tick management program aimed at reducing flea populations in the dog's environment (bedding, carpets, kennel, yard). Use other products registered for residential area control. Consult your veterinarian, for flea and tick spot-on product recommendations.

**PRECAUTIONARY STATEMENTS**

**HAZARDS TO HUMANS AND DOMESTIC ANIMALS**

**CAUTION**

**Hazards to Humans:** Harmful if swallowed. Causes moderate eye irritation. Wash thoroughly with soap and water after handling and before eating, drinking, chewing gum, using tobacco, or using the toilet. Avoid contact with eyes or clothing.

**Hazards to Domestic Animals: FOR EXTERNAL USE ON DOGS ONLY.** Do not use on puppies under 12 weeks of age or less than [5][16][34][66] pounds. Consult a veterinarian before using this product on debilitated, aged, medicated, pregnant, or nursing dogs. Consult a veterinarian before using on dogs with known organ dysfunction. This product is not a substitute for prescribed heartworm preventative. **DO NOT USE ON CATS** or animals other than dogs. Keep cats away from treated dogs for 24 hours. If applied to or ingested by a cat, contact your veterinarian immediately. Cats which actively groom or engage in close physical contact with treated dogs may be at risk of serious harmful effect. Certain medications can interact with pesticides. It is advisable to consult a veterinarian before using this product with ANY other pesticide or drug.



<b>FIRST AID</b>	
<b>If swallowed:</b>	<ul style="list-style-type: none"> <li>• Call a poison control center or doctor immediately for treatment advice.</li> <li>• Have person sip a glass of water if able to swallow.</li> <li>• Do not induce vomiting unless told to do so by the poison control center or doctor.</li> <li>• Do not give anything by mouth to an unconscious person.</li> </ul>
<b>If in eyes:</b>	<ul style="list-style-type: none"> <li>• Hold eye open and rinse slowly and gently with water for 15-20 minutes.</li> <li>• Remove contact lenses, if present, after the first 5 minutes, then continue rinsing eye.</li> <li>• Call a poison control center or doctor for treatment advice.</li> </ul>
<b>HOT LINE NUMBER</b>	
Have the product container or label with you when calling a Poison Control Center or doctor, or when going for treatment. You may also contact 1-844-685-9173 for emergency medical treatment.	

**Adverse Reactions:** Some dogs may be sensitive to ingredients in this product. Adverse reactions in dogs may include skin sensitivity, lethargy, increased pruritus (itchiness), erythema (redness), rash and hair discoloration or hair loss at the application site. Observe the dog following treatments. Sensitivity may occur after using ANY pesticide product for pets. If signs of sensitivity occur, bathe your dog with a mild soap and rinse with large amounts of water. If signs continue, consult a veterinarian immediately. Keep cats away from treated dogs for 24 hours. Adverse reactions in cats could include neurological effects such as inactivity, tremors, and convulsions. If applied to or ingested by a cat, contact your veterinarian.

**ENVIRONMENTAL HAZARDS**

This product is extremely toxic to fish. Do not add directly to water. Do not contaminate water when disposing of product or packaging

**NOTICE OF WARRANTY**

NOTE: Seller warrants this product complies with the specifications expressed in this label. To the extent consistent with applicable law, Seller makes no other warranties and disclaims all other warranties, express or implied, including but not limited to warranties of merchantability and fitness for the intended purpose. To the extent consistent with applicable law, Sellers liability or default, breach, or failure under this label shall be limited to the amount of the purchase price. To the extent consistent with applicable law, Seller shall have no liability for consequential damages.

EPA Reg. No. 91300-1  
 Manufactured for:  
 Promika, LLC  
 5000 CentreGreen Way, Suite 100  
 Cary, NC 27513

EPA Est. No.

{A Side Effects box will be located immediately above the cat warning box on the insert}

<b>SIDE EFFECTS</b>
Monitor your dog after application. Side effects may include signs of skin irritation such as redness, scratching, or other signs of discomfort. Gastrointestinal signs such as vomiting or diarrhea have also been reported. If these or other side effects occur, consult your veterinarian or call 1-844-685-9173.



{A 1.5cm x 1.5cm cat prohibition icon in a box will be located at the lower right-hand corner of the insert in yellow with black images}

{TUBE LABEL for folding card and flat card packaging designs}

**SHIELDTEC PLUS FOR DOGS**

PERMETHRIN 45%  
PYRIPROXYFEN 5%

**KEEP OUT OF REACH OF CHILDREN  
CAUTION**

{CAT ICON IN CIRCLE WITH SLASH THROUGH IT WILL BE LOCATED ON TUBE AS SHOWN BELOW}



{A 1.5 cm x 1.5 cm cat prohibition icon in a box will be located on front of tube label in yellow with black images}

READ ENTIRE LABEL AND PRECAUTIONS BEFORE USING  
SEE MAIN LABEL FOR FIRST AID AND ADDITIONAL  
PRECAUTIONS AND INSTRUCTIONS  
READ ENTIRE LABEL AND PRECAUTIONS BEFORE USING

{ONE OF THE FOLLOWING TEXTS PER TUBE– SEE ATTACHMENT A}

[Only for Dogs 5 to 15 lbs.  
And over 12 weeks of age.]

[Only for Dogs 16 to 33 lbs.  
And over 12 weeks of age.]

[Only for Dogs 34 to 66 lbs.  
And over 12 weeks of age.]

[Only for Dogs over 66 lbs.  
And over 12 weeks of age.]

[EPA Reg No.]  
[EPA Est. No.]  
Lot No.

{Front Label of Tube}

{Back Label of Tube}

<p>{Brand Name} For Dogs [X-Y] lbs <math>\geq</math>12 wks permethrin 45%, pyriproxyfen 5% 0.09 fl oz (or) 0.15 fl oz (or) 0.30 fl oz (or) 0.45 fl oz {label code}</p>	<p>KEEP OUT OF REACH OF CHILDREN CAUTION: Read directions and precautions before using. Use scissors to open. EPA REG. No. 91300-1 {label code}</p>
--	---

{EPA REG No may be on either the front or back label}

{TAB LABEL for folding card and tabbed card packaging designs}

### SHIELDTEC PLUS FOR DOGS

#### ACTIVE INGREDIENTS

##### ACTIVE INGREDIENTS:

\*Permethrin:.....45.0%

Pyriproxyfen.....5.0%

**OTHER INGREDIENTS:**.....50.0%

**TOTAL:**.....100.0%

\*cis/trans ratio: Max 55% (±) cis and min 45% (±) trans



{A 1.5cm x 1.5cm cat prohibition icon in a box will be located at the lower right-hand corner of the folding card in yellow with black images}

SEE MAIN LABEL FOR FIRST AID AND ADDITIONAL  
PRECAUTIONS AND INSTRUCTIONS FOR USE  
READ ENTIRE LABEL AND PRECAUTIONS BEFORE USING

{ONE OF THE FOLLOWING TEXTS PER TAB – SEE ATTACHMENT A}

[Only for Dogs 5 to 15 lbs.  
And over 12 weeks of age.]

[Only for Dogs 16 to 33 lbs.  
And over 12 weeks of age.]

[Only for Dogs 34 to 66 lbs.  
And over 12 weeks of age.]

[Only for Dogs over 66 lbs.  
And over 12 weeks of age.]

[EPA Reg No.]

[EPA Est. No.]

Lot No.

{Front Label of Tube}

{Icon as indicated}

{Back Label of Tube}

{Brand Name} For Dogs [X-Y] lbs ≥12 wks permethrin 45%, pyriproxyfen 5% 0.09 fl oz (or) 0.15 fl oz (or) 0.30 fl oz (or) 0.45 fl oz {label code}		KEEP OUT OF REACH OF CHILDREN CAUTION: Read directions and precautions before using. Use scissors to open. EPA REG. No. 91300-1 {label code}
--	---	---

{EPA REG No may be on either the front or back label}

{OUTER BOX LABEL Contains the following labeling plus full product label}

### SHIELDTEC PLUS FOR DOGS

PICTURE OF THE FLEA LIFE CYCLE HERE

As a part of a flea control program, you may use a suitable registered product for outdoor yard spray. Indoors, use a suitable registered carpet spray/powder product and clean dog bedding and premises

#### 4 STEPS FOR FLEA CONTROL

- Step 1 – Shampoo or dip your dog.
- Step 2 – Treat indoor and outdoor premises with indoor and outdoor sprays, foggers and powders.
- Step 3 – Apply SHIELDTEC PLUS FOR DOGS for up to four weeks of adult flea and tick control.
- Step 4 – Maintenance treatments with on-animal sprays and powders.




{A 1.5cm x 1.5cm cat prohibition icon in a box will be located at the lower right-hand corner of the front carton panel in yellow with black images}

{VIEW OF TUBE LABELING OR IMMEDIATE CONTAINER LABELING}

**SHIELDTEC PLUS FOR DOGS**  
**Only For Dogs [X – Y] lbs and over 12 weeks of age.**

**KEEP OUT OF REACH OF CHILDREN**  
**CAUTION**

**EPA Reg. No. 91300-1**



**READ DIRECTIONS AND PRECAUTIONS BEFORE USING**

{[Black print for “No Cat Icon”]}

{ONE OF THE FOLLOWING TEXTS WILL BE USED PER PACKAGE}

[Only for Dogs 5 to 15 lbs.  
And over 12 weeks of age.]

[Only for Dogs 16 to 33 lbs.  
And over 12 weeks of age.]

[Only for Dogs 34 to 66 lbs.  
And over 12 weeks of age.]

[Only for Dogs over 66 lbs.  
And over 12 weeks of age.]

## OPTIONAL MARKETING CLAIMS

- BREAKS FLEA LIFE CYCLE!
- KILLS AND REPELS FLEAS UP TO [ONE MONTH][4 WEEKS][30 days]!
- KILLS FLEA EGGS FOR UP TO [4 MONTHS][123 DAYS]!
- PREVENTS FLEA EGGS FROM DEVELOPING INTO BITING ADULTS FOR UP TO [4 MONTHS][123 DAYS]!
- KILLS AND REPELS MOSQUITOES FOR UP TO [ONE MONTH][FOUR WEEKS][30 DAYS]!
- PROTECTS AGAINST MOSQUITOES UP TO [ONE MONTH][4 WEEKS]!
- PROTECTS AGAINST BLOOD FEEDING BY MOSQUITOES (vector of heartworm) UP TO [ONE MONTH][4 WEEKS]!
- KILLS AND REPELS TICKS FOR UP TO [ONE MONTH][4 WEEKS]!
- KILLS AND REPELS DEER TICKS (which may carry Lyme disease) for up to [one month][4 weeks]!
- KILLS AND REPELS BROWN DOG TICKS (*Rhipicephalus sanguineus*) FOR UP TO [ONE MONTH][4 WEEKS]!
- KILLS AND REPELS AMERICAN DOG TICKS (*Dermacentor variabilis*) FOR UP TO [ONE MONTH][4 WEEKS]!
- MONTHLY APPLICATION!
- MONTHLY FLEA, TICK AND MOSQUITO TREATMENT!
- KILLS AND REPELS FLEAS AND TICKS FOR UP TO [A MONTH][4 WEEKS]!;
- KILLS AND REPELS ADULT FLEAS FOR UP TO [ONE MONTH][4 WEEKS]!
- KILLS FLEA EGGS [FOR UP TO 4 MONTHS][FOR 123 DAYS]!
- KILLS AND REPELS TICKS FOR UP TO [ONE MONTH][4 WEEKS] INCLUDING DEER TICKS! (which may carry Lyme disease), BROWN DOG TICKS & AMERICAN DOG TICKS!
- KILLS AND REPELS [ADULT FLEAS] FOR UP TO [ONE MONTH][4 WEEKS]!
- MONTHLY FLEA, TICK AND MOSQUITO TREATMENT!
- KILLS, REPELS & PREVENTS FLEAS, FLEA EGGS, TICKS\*, LICE & MOSQUITOES  
\*Including Brown Dog, American Dog and Deer Ticks (which may carry Lyme disease)
- Contains Permethrin and Pyriproxyfen, the active ingredients used in VetGuard Plus®
- Vetguard plus® is a registered trademark of TruRx, LLC
- ShieldTec Plus for Dogs is not manufactured or distributed by Tru Prodigy, seller of VetGuard Plus® for Dogs

{The following “Triple Action” statements, if used, must be worded & formatted exactly as listed below}

[1] TRIPLE ACTION: Kills flea eggs for up to [4 months][123 days]. Prevents flea eggs from developing into biting adults for up to [4 months][123 days]. Kills and repels fleas, lice, mosquitos & ticks for up to [one month][4 weeks].\*\*

\*\*Including Brown Dog, American Dog, and Deer Ticks (which may carry Lyme disease)

[2] TRIPLE ACTION: Kills and repels fleas, lice, mosquitoes & ticks for up to [one month][4 weeks][30 days].\*\*

Kills flea eggs for up to [4 months][123 days]. Prevents flea eggs from developing into biting adults for up to [4 months][123 days].

\*\*Including Brown Dog, American Dog and Deer Ticks (which may carry Lyme disease).

[3] TRIPLE ACTION: Kills and repels fleas, lice, mosquitos & ticks for up to [one month][4 weeks][30 days].\*\* Repels mosquitoes, lice, and mites on dogs for up to [one month][4 weeks][30 days]. Prevents flea eggs from developing into biting adults for up to [4 months][123 days].

\*\*Including Brown Dog, American Dog and Deer Ticks (which may carry Lyme disease).

[4] TRIPLE ACTION: Kills fleas, lice, mosquitos & ticks for up to [one month][4 weeks][30 days].\*\*  
Repels mosquitos, lice, and mites on dogs for up to 4 weeks. Prevents flea eggs from developing into biting adults for up to [4 months][123 days].

\*\*Including Brown Dog, American Dog and Deer Ticks (which may carry Lyme disease).

[5] TRIPLE ACTION: Kills and repels fleas, lice, mosquitoes & ticks for up to [one month][4 weeks][30 days].\*\* Repels lice and mosquitoes on dogs for up to 4 weeks. Prevents flea eggs from developing into biting adults for up to [4 months][123 days].

\*\*Including Brown Dog, American Dog and Deer Ticks (which may carry Lyme disease).

For use on Dogs and puppies over 12 weeks of age and 5-15 lbs

For use on Dogs and puppies over 12 weeks of age and 16-33 lbs

For use on Dogs and puppies over 12 weeks of age and 34-66 lbs

For use on Dogs and puppies over 12 weeks of age and over 66 lbs

- Kills, repels and prevents re-infestation of fleas for up to [one month][4 weeks][30 days]
  - Prevents re-infestation of fleas for up to [one month][4 weeks][30 days]
  - Kills flea eggs for up to [two months][8 weeks]
  - Kills flea eggs for up to [42 days][6 weeks]
  - Kills flea eggs for up to [one month][4 weeks][30 days]
  - Breaks the flea life cycle[!]
- Kills, repels and prevents re-infestation of ticks for up to [one month][4 weeks][30 days]
- Kills, repels mosquitoes, lice and mites on dogs for up to [one month][4 weeks][30 days]
  - Kills and repels lice, mites and mosquitoes on dogs for up to [one month][4 weeks][30 days]
- Kills 5 different kinds of pests on dogs: ticks, lice, mites, fleas and mosquitoes
- Kills five different kinds of pests on dogs: ticks, lice, mites, fleas and mosquitoes
- Kills 5 different canine pests: ticks, lice, mites, fleas and mosquitoes
- Kills five different canine pests: ticks, lice, mites, fleas and mosquitoes
- Kills canine pests belonging to Five different orders: ticks, lice, mites, fleas and mosquitoes
- Kills canine pests belonging to 5 different orders: ticks, lice, mites, fleas and mosquitoes
- When applied to the dog, permethrin disperses in the pet's skin oils. Fleas become hyperactive and exhibit a "hot foot" behavior where they will scurry across the animal and then jump off and die.

