



U.S. ENVIRONMENTAL PROTECTION AGENCY

Office of Pesticide Programs
Registration Division (7505P)
1200 Pennsylvania Ave., N.W.
Washington, D.C. 20460

EPA Reg. Number:

91300-1

Date of Issuance:

8/27/15

NOTICE OF PESTICIDE:

Registration
 Reregistration

(under FIFRA, as amended)

Term of Issuance:

Conditional, Time-Limited
Expires: 02/01/2018

Name of Pesticide Product:

ShieldTec Plus For Dogs

Name and Address of Registrant (include ZIP Code):

Brooke Hedrick
Promika, LLC
1204 Village Market Place, #273
Morrisville, NC 27560

Note: Changes in labeling differing in substance from that accepted in connection with this registration must be submitted to and accepted by the Registration Division prior to use of the label in commerce. In any correspondence on this product always refer to the above EPA registration number.

On the basis of information furnished by the registrant, the above named pesticide is hereby registered under the Federal Insecticide, Fungicide and Rodenticide Act.

Registration is in no way to be construed as an endorsement or recommendation of this product by the Agency. In order to protect health and the environment, the Administrator, on his motion, may at any time suspend or cancel the registration of a pesticide in accordance with the Act. The acceptance of any name in connection with the registration of a product under this Act is not to be construed as giving the registrant a right to exclusive use of the name or to its use if it has been covered by others.

This product is conditionally registered in accordance with FIFRA section 3(c)(7)(A). You must comply with the following conditions:

1. Submit and/or cite all data required for registration/reregistration/registration review of your product under FIFRA when the Agency requires all registrants of similar products to submit such data.

Signature of Approving Official:

Jennifer Urbanski, Ph.D., Product Manager 04
Invertebrate & Vertebrate Branch, Registration Division (7505P)

Date:

8/27/15

2. This registration is time-limited and expires 02/01/2018.
3. You must submit quarterly enhanced incident reports and quarterly sales information in doses sold for this product beginning within 3 months of the date the product is first released for shipment, on the first day of the quarter (i.e., January 1, April 1, July 1, or October 1). Please flag any Confidential Business Information as such. Submit enhanced incident reporting and quarterly sales information to the Product Manager's attention. The following is a list of information that must be included in the quarterly reports for each incident:
 - EPA Registration Number
 - Product name (brand name)
 - Lot #
 - Where purchased: internet, store, veterinarian
 - Active Ingredient(s)
 - Weight range for product
 - Date on which incident occurred (mm/dd/yyyy)
 - State in which the incident occurred (standard 2 letter abbreviation)
 - Registrant case #
 - Species: dog, cat, other (specify)
 - Breed: (as reported by pet owner)
 - Age: months or years
 - Sex: M, F, or neutered
 - Weight: pounds
 - Primary Route of Exposure: dermal, oral, other animal, inhalation, other
 - Body System: neurological, dermatological, GI, respiratory, ocular, other
 - Major signs noted with separate column for each sign, using standard terminology
 - Time to Onset: (hours, days)
 - Treated by veterinarian: yes or no
 - First time product used: yes or no
 - Misuse: use on incorrect species, overdose, too frequent dosing, other (describe)
 - Any known precondition
 - EPA Severity Code: death, major, moderate, minor
 - Outcome: died, recovered, still treated, unknown
4. Along with the enhanced incident reporting, you must submit an analysis of the incidents seen, to include the following details:
 - All incidents should be reported including all minor dermal and ocular irritation reports.
 - Summary table for dogs showing number of incidents of each severity code for each route of exposure. Each incident should only be reported once. If one incident has several routes of exposure, the order should be ocular > oral > dermal. In other words, an

- incident with both oral and dermal exposure would be reported as oral exposure, and an incident with both ocular and oral exposure would be reported as ocular exposure.
- A similar summary table for cats (misuse or secondary exposure) showing number of incidents of each severity code for each route of exposure.
 - Summary table for cats and table for dogs showing number of incidents that are believed due to secondary exposure (e.g., multi-pet households).
 - A summary table for dogs showing number of incidents for each severity code for these age ranges: <3 months, 3-6 months, 6-9 months, 9-12 months, 1 yr, 2 yr, 3 yr, 4 yr, 5 yr, 6 yr, 7 yr, 8 yr, 9 yr, 10 yr, 11 yr, 12 yr, 13 yr, 14 yr, 15 yr, >15 yr.
 - A summary table showing the number of dog incidents for each severity code for each pet weight range on the product label, as applicable.
 - A summary table for dog weight showing number of incidents for each product weight range. This table should show number of incidents in dogs weighing less than that product weight range, number of incidents in dogs in lower half of weight range, number of incidents in dogs in upper half of weight range, and dogs weighing more than the product weight range, as applicable.
 - Table showing number of incidents for each dog breed, where provided.
 - Table showing number of incidents in dogs for each clinical sign.
 - Table showing number of incidents in dogs for each organ system.
 - Report aggregate incidents, but do not combine moderate and minor incidents.

If EPA determines that future mitigation measures are necessary for all pet spot-ons, the Agency will inform registrants. If mitigation measures are necessary, EPA may take regulatory action.

5. You are required to comply with the data requirements described in the DCI identified below:
 - a. Permethrin GDCI-109701-1252

You must comply with all of the data requirements within the established deadlines. If you have questions about the Generic DCI listed above, you may contact the Chemical Review Manager in the Pesticide Reevaluation Division: http://www.epa.gov/oppsrrd1/contacts_prd.htm

6. Make the following label changes before you release the product for shipment:
 - Revise the EPA Registration Number to read, “EPA Reg. No. 91300-1.”
7. Submit one copy of the final printed label for the record before you release the product for shipment.

Should you wish to add/retain a reference to the company’s website on your label, then please be aware that the website becomes labeling under the Federal Insecticide Fungicide and Rodenticide Act and is subject to review by the Agency. If the website is false or misleading, the product would be misbranded and unlawful to sell or distribute under FIFRA section 12(a)(1)(E). 40 CFR 156.10(a)(5) list examples of statements EPA may consider false or misleading. In addition, regardless of whether a website is

referenced on your product's label, claims made on the website may not substantially differ from those claims approved through the registration process. Therefore, should the Agency find or if it is brought to our attention that a website contains false or misleading statements or claims substantially differing from the EPA approved registration, the website will be referred to the EPA's Office of Enforcement and Compliance.

If you fail to satisfy these data requirements, EPA will consider appropriate regulatory action including, among other things, cancellation under FIFRA section 6(e). Your release for shipment of the product constitutes acceptance of these conditions. A stamped copy of the label is enclosed for your records.

Please note that the record for this product currently contains the following CSFs:

- Basic CSF dated 04/02/2015
- Alternate CSF 1 dated 04/02/2015
- Alternate CSF 2 dated 04/02/2015
- Alternate CSF 3 dated 04/02/2015
- Alternate CSF 4 dated 04/02/2015

If you have any questions, please contact Jennifer Gaines at 703-305-5967 or via email at gaines.jennifer@epa.gov.

Enclosure

[FRONT PANEL]

SHIELDTEC PLUS FOR DOGS

PLEASANT CITRUS SCENT

FLEA AND TICK CONTROL FOR DOGS AND PUPPIES OVER 12 WEEKS OF AGE

[Picture of dog in weight range]

"SMALL" [AND] "Use Only For Dogs between 5 & 15 lbs", [OR] "Use Only For Dogs 5 - 15 lbs."
"MEDIUM" [AND] "Use Only For Dogs between 16 & 33 lbs", [OR] "Use Only For Dogs 16 - 33 lbs."
"LARGE" [AND] "Use Only For Dogs between 34 & 66 lbs", [OR] "Use Only For Dogs 34 - 66 lbs."
"X-LARGE" [AND] "Use Only For Dogs over 66 lbs", [OR] "Use Only For Dogs over 66lbs."

[Only 1 of the weight ranges (listed above) per package label]

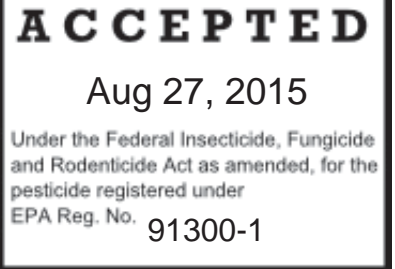
[1 Tube Pack =] "1 Month Supply" [or] 1-pak (1 x 1.5mL) [*]
[3 Tube Pack =] "3 Month Supply" [or] 3-pak (3 x 1.5mL) [*]
[4 Tube Pack =] "4 Month Supply" [or] 4-pak (4 x 1.5mL) [*]
[6 Tube Pack =] "6 Month Supply" [or] 6-pak (6 x 1.5mL) [*]

[*] [Tube mL size dose to reflect dog size. (1.0 mL small dog, 1.5mL medium dog, 3.0 mL large dog, 4.5mL x-large dog)]

[Number of Applications in package – Only 1 of the above descriptions per package]

DO NOT USE ON CATS – MAY BE FATAL

- BREAKS FLEA LIFE CYCLE!
- KILLS AND REPELS FLEAS UP TO 4 WEEKS!
- KILLS FLEA EGGS FOR UP TO 123 DAYS!
- PREVENTS FLEA EGGS FROM DEVELOPING INTO BITING ADULTS FOR UP TO 123 DAYS!
- KILLS AND REPELS MOSQUITOES FOR UP TO FOUR WEEKS!
- PROTECTS AGAINST MOSQUITOES UP TO 4 WEEKS!
- PROTECTS AGAINST BLOOD FEEDING BY MOSQUITOES (vector of heartworm) UP TO 4 WEEKS!
- KILLS AND REPELS TICKS FOR UP TO 4 WEEKS!
- KILLS AND REPELS DEER TICKS (which may carry Lyme disease) for up to 4 weeks!
- KILLS AND REPELS BROWN DOG TICKS (Rhipicephalus sanguineus) FOR UP TO 4 WEEKS!
- KILLS AND REPELS AMERICAN DOG TICKS (Dermacentor variabilis) FOR UP TO 4 WEEKS!
- MONTHLY APPLICATION!
- MONTHLY FLEA, TICK AND MOSQUITO TREATMENT!
- KILLS AND REPELS FLEAS AND TICKS FOR UP TO (A MONTH) [OR] (4 WEEKS)!
- KILLS AND REPELS ADULT FLEAS FOR UP TO 4 WEEKS!
- KILLS FLEA EGGS [FOR UP TO 4 MONTHS] [FOR 123 DAYS!]
- KILLS AND REPELS TICKS FOR UP TO 4 WEEKS INCLUDING DEER TICKS! (which may carry Lyme disease), BROWN DOG TICKS & AMERICAN DOG TICKS!
- KILLS AND REPELS [ADULT FLEAS] FOR UP TO 4 WEEKS!
- MONTHLY FLEA, TICK AND MOSQUITO TREATMENT!
- KILLS, REPELS & PREVENTS FLEAS, FLEA EGGS, TICKS*, LICE & MOSQUITOES
*Including Brown Dog, American Dog and Deer Ticks (which may carry Lyme disease)
- Contains Permethrin and Pyriproxyfen, the active ingredients used in VetGuard Plus®
- Vetguard plus® is a registered trademark of TruRx, Llc
- ShieldTec Plus for Dogs is not manufactured or distributed by Tru Prodigy, seller of VetGuard Plus® for Dogs



[The following "Triple Action" statements, if used, must be worded & formatted exactly as listed below]

[1] TRIPLE ACTION: Kills flea eggs for up to 4 months [OR] 123 days. Prevents flea eggs from developing into biting adults for up to 4 months [OR] 123 days. Kills and repels fleas, lice, mosquitos & ticks for up to 4 weeks.**

**Including Brown Dog, American Dog, and Deer Ticks (which may carry Lyme disease)

[2] TRIPLE ACTION: Kills and repels fleas, lice, mosquitoes & ticks for up to 4 weeks.**

Kills flea eggs for up to 4 months [OR] 123 days. Prevents flea eggs from developing into biting adults for up to 4 months [OR] 123 days.

**Including Brown Dog, American Dog and Deer Ticks (which may carry Lyme disease).

[3] TRIPLE ACTION: Kills and repels fleas, lice, mosquitos & ticks for up to 4 weeks.** Repels mosquitoes, lice, and mites on dogs for up to 4 weeks. Prevents flea eggs from developing into biting adults for up to 4 months [OR] 123 days.

**Including Brown Dog, American Dog and Deer Ticks (which may carry Lyme disease).

[4] TRIPLE ACTION: Kills fleas, lice, mosquitos & ticks for up to 4 weeks.** Repels mosquitos, lice, and mites on dogs for up to 4 weeks. Prevents flea eggs from developing into biting adults for up to 4 months [OR] 123 days.

**Including Brown Dog, American Dog and Deer Ticks (which may carry Lyme disease).

[5] TRIPLE ACTION: Kills and repels fleas, lice, mosquitoes & ticks for up to 4 weeks.** Repels lice and mosquitoes on dogs for up to 4 weeks. Prevents flea eggs from developing into biting adults for up to 4 months [OR] 123 days.

**Including Brown Dog, American Dog and Deer Ticks (which may carry Lyme disease).

ACTIVE INGREDIENTS:

*Permethrin: (CAS #52645-53-1).....45.0%

Pyriproxyfen: (CAS #95737-68-1)5.0%

OTHER INGREDIENTS:.....50.0%

TOTAL: 100.0%

*cis/trans ratio: Max 55% (±) cis and min 45% (±) trans

KEEP OUT OF THE REACH OF CHILDREN

CAUTION

SEE SIDE/BACK PANEL FOR ADDITIONAL PRECAUTIONARY STATEMENTS

[OR]

SEE INSIDE FLAP [OR] FLAP/INSERT FOR ADDITIONAL PRECAUTIONARY STATEMENTS

Net Contents: 0.09 fl. oz. ("3-pak" [OR] "3 tubes" of 0.03 fl. oz.. (1mL/tube) [OR]

0.15 fl. oz. ("3-pak" [OR] "3 tubes" of 0.05 fl. oz. (1.5mL/tube) [OR]

0.30 fl. oz. ("3-pak" [OR] "3 tubes" of 0.10 fl. oz. (3mL/tube) [OR]

0.45 fl. oz. ("3-pak" [OR] "3 tubes" of 0.15 fl. oz. (4.5mL/tube) [OR]

[Note: Net Contents listed is for a 3-pak/3 tube pack, the same format used for a 1, 4, & 6 tube packs]

EPA Reg. No.

EPA Est. No.

Manufactured for:

Promika, LLC

1204 Village Market Place, #273

Morrisville, NC 27560

MADE IN THE USA

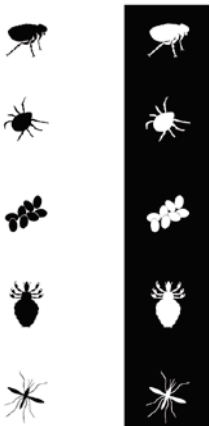


[Minimum 1.5 x 1.5 size for no-cat image]
[Background on all "No Cat icons & wording to be yellow]

ALTERNATE MARKETING CLAIMS BASED UPON ME-TOO APPLICATIONS

For use on Dogs and puppies over 12 weeks of age

- Kills, repels and prevents re-infestation of fleas for up to 4 weeks
- Prevents re-infestation of fleas for up to 4 weeks
- Kills flea eggs for up to 8 weeks
- Kills flea eggs for up to 6 weeks
- Kills flea eggs for up to 4 weeks
- Breaks the flea life cycle
- Kills, repels and prevents re-infestation of ticks for up to 4 weeks
- Kills, repels mosquitoes, lice and mites on dogs for up to 4 weeks
- Kills and repels lice, mites and mosquitoes on dogs for up to 4 weeks
- Kills 5 different kinds of pests on dogs: ticks, lice, mites, fleas and mosquitoes
- Kills five different kinds of pests on dogs: ticks, lice, mites, fleas and mosquitoes
- Kills 5 different canine pests: ticks, lice, mites, fleas and mosquitoes
- Kills five different canine pests: ticks, lice, mites, fleas and mosquitoes
- Kills canine pests belonging to Five different orders: ticks, lice, mites, fleas and mosquitoes
- Kills canine pests belonging to 5 different orders: ticks, lice, mites, fleas and mosquitoes
- When applied to the dog, permethrin disperses in the pet's skin oils. Fleas become hyperactive and exhibit a "hot foot" behavior where they will scurry across the animal and then jump off and die.



[SIDE/BACK PANEL]

**SHIELDTEC PLUS FOR DOGS
FOR DOGS & PUPPIES OVER 12 WEEKS OF AGE**

**READ ENTIRE LABEL BEFORE EACH USE
USE ONLY ON DOGS OVER 12 WEEKS OF AGE [OR]
Only for Dogs (dog's weight range) and over 12 weeks of age)**

DO NOT USE ON CATS – MAY BE FATAL

[Optional Listing of Tube number and size in package]

- | |
|---|
| [1 Tube Pack =] (Dog's weight range) 1 – (size of tube in mL) Tube |
| [3 Tube Pack =] (Dog's weight range) 3 – (size of tube in mL) Tubes |
| [4 Tube Pack =] (Dog's weight range) 4 – (size of tube in mL) Tubes |
| [6 Tube Pack =] (Dog's weight range) 6 – (size of tube in mL) Tubes |

[Number of Applications in package – Only 1 of above descriptions per package]

**PRECAUTIONARY STATEMENTS
HAZARDS TO HUMANS AND DOMESTIC ANIMALS
CAUTION**

Hazards to Humans: Harmful if swallowed. Causes moderate eye irritation. Wash thoroughly with soap and water after handling and before eating, drinking, chewing gum, using tobacco, or using the toilet. Avoid contact with eyes or clothing.

Hazards to Domestic Animals: FOR EXTERNAL USE ON DOGS ONLY. Do not use on puppies under 12 weeks of age. Consult a veterinarian before using this product on debilitated, aged, medicated, pregnant, or nursing dogs. Consult a veterinarian before using on dogs with known organ dysfunction. **DO NOT USE ON CATS** or animals other than dogs. Keep cats away from treated dogs for 24 hours. If applied to or ingested by a cat, contact your veterinarian immediately. Cats which actively groom or engage in close physical contact with treated dogs may be at risk of serious harmful effect. Certain medications can interact with pesticides. It is advisable to consult a veterinarian before using this product with ANY other pesticide or drug.

Adverse Reactions: Some dogs may be sensitive to ingredients in this product. Adverse reactions in dogs may include skin sensitivity, lethargy, increased pruritus (itchiness), erythema (redness), rash and hair discoloration or hair loss at the application site. Observe the dog following treatments. Sensitivity may occur after using ANY pesticide product for pets. If signs of sensitivity occur, bathe your dog with a mild soap and rinse with large amounts of water. If signs continue, consult a veterinarian immediately. Keep cats away from treated dogs for 24 hours. Adverse reactions in cats could include neurological effects such as inactivity, tremors, and convulsions. If applied to or ingested by a cat, contact your veterinarian immediately.

FIRST AID	
If swallowed:	<ul style="list-style-type: none">• Call a poison control center or doctor immediately for treatment advice.• Have person sip a glass of water if able to swallow.• Do not induce vomiting unless told to do so by the poison control center or doctor.• Do not give anything by mouth to an unconscious person.
If in eyes:	<ul style="list-style-type: none">• Hold eye open and rinse slowly and gently with water for 15-20 minutes.• Remove contact lenses, if present, after the first 5 minutes, then continue rinsing eye.• Call a poison control center or doctor for treatment advice.
HOT LINE NUMBER Have the product container or label with you when calling a Poison Control Center or doctor, or when going for treatment. You may also contact 1-844-685-9173 for emergency medical treatment.	

ENVIRONMENTAL HAZARDS

This product is extremely toxic to fish. Do not add directly to water. Do not contaminate water when disposing of product or packaging.

DIRECTIONS FOR USE

It is a violation of Federal law to use this product in a manner inconsistent with its labeling.

USE RESTRICTIONS:

DO NOT USE ON CATS OR KITTENS – MAY BE FATAL

USE ONLY ON DOGS OR PUPPIES 12 WEEKS OF AGE OR OLDER.

DO NOT ALLOW CHILDREN TO APPLY THIS PRODUCT.

Do not apply to dogs/puppies weighing less than 5 lbs. [for smallest size dog package only.]

Do not use more than one tube per dog/puppy and do not retreat more than once per month.

Do not get the dog's eyes or mouth and do not allow your dog/puppy to ingest this product.

HOW TO APPLY:

[Only one of the following descriptions per label, based upon dog size]

[Option 1]

Use only for Dogs Between 5 – [&] 15 lbs.: (1.0 mL applicator tubes) Apply one tube (1.0 mL) of product solution as a spot or stripe to the dog's back between the shoulder blades. Do not use on dogs less than 5 pounds. [Used with separately listed statement #8 below]

[OR (Alternate language – for combining “how to apply” and “how to open” tube type)]

Use Only for Dogs 5 – [to] 15 lbs.: (1.0 mL applicator tubes)[Insert wording for tube type used – options listed below, #1 through #7] Apply one tube (1.0 mL) of product solution as a spot to the skin at three different locations along the dog's back between the shoulder blades and base of the tail. Do not use on dogs less than 5 pounds. Squeeze tube to apply all of the solution to the dog's skin.

[Dogs 16 to 33lbs]

Use Only on Dogs Between 16 & 33 lbs: (1.5 mL applicator tubes) Apply one tube (1.5 mL) of product solution as a spot to the skin at three different locations along the dog's back between the shoulder blades and base of the tail. [Used with separately listed statement #8 below]

[OR (Alternate language – for combining “how to apply” and “how to open” tube type)]

Use Only on Dogs 16- [to] 33 lbs: (1.5 mL applicator tubes) [Insert wording for tube type used – options listed below, #1 through #7] Apply one tube (1.5 mL) of product solution as a spot to the skin at three different locations along the dog's back between the shoulder blades and base of the tail. Squeeze tube to apply all of the solution to the dog's skin.

[Dogs 34 to 66lbs]

Use only on dogs between 34 & 66 lbs: (3 mL applicator tubes) Apply approximately half of the tube (1.5 mL) of product solution as a spot or stripe to the skin to the dog's back between the shoulder blades and apply the rest of the tube's contents (1.5 mL) as a spot or stripe to the dog's back directly in front of the base of the tail. [Used with separately listed statement #8 below] **[OR]**

[(3 mL applicator tube) Apply the entire tube (3.0 mL) as a continuous stripe on the dog's back starting between the shoulder blades and ending directly in front of the base of the tail. [Used with separately listed statement #8 below]

[OR (Alternate language – for combining “how to apply” and “how to open” tube type)]

Use Only on Dogs 34- [to] 66 lbs: (3 mL applicator tubes) [Insert wording for tube type used – options listed below, #1 through #7] Apply approximately half of the tube (1.5 mL) of product solution as a spot or stripe to the skin on the dog's back between the shoulder blades and apply the rest of the tube's contents (1.5 mL) as a spot or stripe to the skin on the dog's back directly in front of the base of the tail. Squeeze tube to apply all of the solution to the dog's skin. **[OR]**

[(3 mL applicator tube) [Insert wording for tube type used – options listed below, #1 through #7] Apply the entire tube (3.0 mL) as a spot to the skin at three or more different locations along the dog's back between the shoulder blades and base of the tail. Squeeze tube to apply all of the solution to the dog's skin.

[Dogs over 66 lbs.]

Use Only for Dogs Over 66 lbs: (4.5 mL applicator tubes) Apply approximately half of the tube (2.25 mL) of product solution as a spot or stripe to the dog's back between the shoulder blades and apply the rest of the tube's contents (2.25 mL) as a spot or stripe to

the dog's back directly in front of the base of the tail. DO NOT USE MORE THAN A SINGLE 4.5 mL DOSE [Used with separately listed statement #8 below][OR]

(4.5 mL applicator tubes) Apply the entire tube (4.5 mL) as a continuous stripe on the dog's back starting between the shoulder blades and ending directly in front of the base of the tail. DO NOT USE MORE THAN A SINGLE 4.5 mL DOSE. [Used with separately listed statement #8 below]

[OR (Alternate language – for combining “how to apply” and “how to open” tube type)]

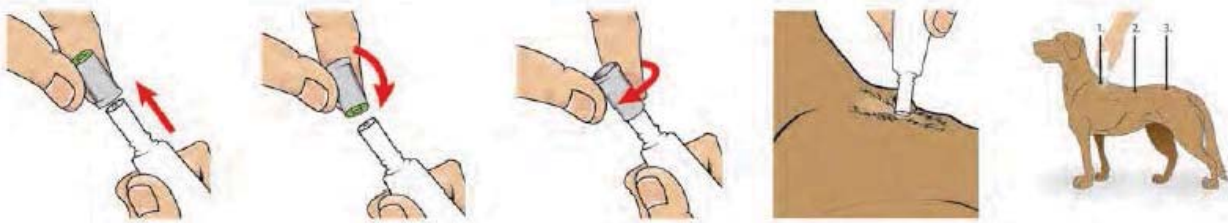
[Use Only for Dogs Over 66 lbs: (4.5 mL applicator tubes) [Insert wording for tube type used – options listed below, #1 through #7] Apply approximately half of the tube (2.25 mL) of product solution as a spot or stripe to the skin on the dog's back between the shoulder blades and apply the rest of the tube's contents (2.25 mL) as a spot or stripe to the skin on the dog's back directly in front of the base of the tail. DO NOT USE MORE THAN A SINGLE 4.5 mL DOSE. Squeeze tube to apply all of the solution to the dog's skin.

[(4.5 mL applicator tubes) [Insert wording for tube type used – options listed below, #1 through #7] Apply the entire tube (4.5 mL) as a spot to the skin at three or more different locations along the dog's back between the shoulder blades and base of the tail. DO NOT USE MORE THAN A 4.5 mL DOSE REGARDLESS OF DOG SIZE. Squeeze tube to apply all of the solution to the dog's skin.

[Wording for the insertion above, based upon packaging tube type]

[1] [FOR TWIST TUBES]: Remove product from package. Holding tube upright, twist off cap. Invert tube over dog and use open end to part dog's hair.

[2] [FOR RATCHET TUBES]: Remove product tube from package. Holding tube upright, pull off cap. Turn the cap around and place opposite end of cap back on tube. Twist cap to break seal, remove cap from tube. Invert tube over dog and use open end to part dog's hair.



[Pictorial for Ratchet Tubes/ Drawing of how to apply]

[3] [FOR TUBES IN BLISTER CARD]: Remove product tube from package. Holding tube with the notched end pointing up and away from applicator's and dog's face and body, snap or cut off narrow end at notches. Invert tube over dog and use open end to part dog's hair.

[4] [FOR FLAT CARD UNIT-DOSE PACKAGING]: Separate cards along the perforated line. Holding separated card by its wide end with narrow end pointed up and away from applicator's and dog's face and body, cut along dotted line. Invert card over dog and use narrow end of the card to part dog's hair.

[5] [FOR FLAT CARD UNIT DOSE PACKAGING]: [For push pin type applicator] Remove one product tube from the card. With cap end pointed up and away from applicator's and dog's face and body, depress cap to pierce tube end. Carefully remove cap and invert tube over dog, with tube close to dog's skin.

[6] [FOR FOLDING CARD OR TABBED CARD UNIT-DOSE PACKAGING]: Remove product tab by tearing along perforation. Holding tab with tube end pointed up and away from applicator's and dog's face and body, cut along dotted line. Invert tab over dog and use narrow end of the card to part dog's hair.

[7] [BLISTER CARD WITH TRI-LAYER TUBES]: Remove product tube(s) from package. Fold along perforation between tubes and tear off one tube. {Return unused tubes to package} Holding tube with notched end pointing up and away from applicator's and dog's face and body, snap off narrow end at notches. Invert tube over dog and use open end to part dog's hair.

[8] FOR PERFORATED 3-PAK TUBE STRIPS WITH BREAKWAY TABS ON EACH TUBE: Separate one tube at a time from the 3-pak strip. Holding tube upright and away from applicator's and dog's face and body, snap the tip of the tube open. Invert tube over dog and use open end to part dog's hair.

[9] FOR DROPPER BOTTLE MULTI-DOSE PACKAGING: Insert dropper tube into insecticide solution, squeeze bulb and then release to fill tube barrel to 1.0 mL (1.5 mL) (3.0 mL) (4.5 mL) line. Position dropper tube end in the dog's hair next to skin and squeeze bulb to apply all of the solution to the dog's skin as indicated for dog's size.

[10] [FOR SQUEEZE ON TUBES]: Remove product tubes [vial] from the package. [Separate one tube from the others.] Hold the tube [vial] with notched end pointing up and away from the face and body [of applicator and dog]. Use scissors to cut off the narrow end at the notches along the lines. Invert tube over dog and use open end to part dog's hair.

[11] [FOR SNAP BACK TUBES]: Remove tube[s] from packaging. Using one applicator tube, hold the tube with the narrow end pointing up. [Snap the outline of the tip back to allow access to the [dotted tip] [applicator]]. [Snap [Cut] the applicator tip [backwards] [across the marked line] [to allow access to the] [dotted tip] [notches][applicator]]. [Holding tube away from your and your dog's eyes.] [[Snap][Cut] the applicator tip [at notched line] to open.] Invert tube over dog and use open end to part dog's hair.



SHIELDTEC PLUS FOR DOGS is an effective and easy to use product. Treating your dog with this product prevents flea eggs from developing into biting adults for up to [4 months] 123 days. As with all flea and tick control products, this product should be used as part of a program aimed at reducing flea populations in the dog's environment (bedding, carpets, kennel, yard). Consult your veterinarian, for program recommendations.

STORAGE AND DISPOSAL

Do not contaminate water, food, or feed by storage or disposal.

Pesticides Storage: Store this in a cool, dry (preferably locked) place away from heat and open flame, in an area inaccessible to children and animals. Protect from freezing.

Pesticide Disposal: Non-refillable container. If empty: Do not reuse or refill this container. Place in trash or offer recycling if available. If partly filled: Call your local solid waste agency for disposal instructions. Never place unused product down any indoor or outdoor drain.

NOTICE OF WARRANTY

NOTE: Seller warrants this product complies with the specifications expressed in this label. To the extent consistent with applicable law, Seller makes no other warranties and disclaims all other warranties, express or implied, including but not limited to warranties of merchantability and fitness for the intended purpose. To the extent consistent with applicable law, Seller's liability or default, breach, or failure under this label shall be limited to the amount of the purchase price. To the extent consistent with applicable law, Seller shall have no liability for consequential damages.

SEE INSIDE FLAP AND INSERT FOR ADDITIONAL PRECAUTIONARY STATEMENTS

**KEEP OUT OF THE REACH OF CHILDREN
CAUTION**

EPA Reg. No.

Manufactured for:

Promika, LLC

1204 Village Market Place, #273

Morrisville, NC 27560

EPA Est. No.

SIDE EFFECTS

Monitor your dog after application. Side effects may include signs of skin irritation such as redness, scratching, or other signs of discomfort. Gastrointestinal signs such as vomiting or diarrhea have also been reported. If these or other side effects occur, consult your veterinarian or call 1-844-685-9173.



DO NOT USE ON CATS – MAY BE FATAL

Keep away from treated dogs for 24 hours. If applied to or ingested by a cat, contact your veterinarian immediately.

[OPTIONAL INSIDE FLAP – Contains information not located on SIDE/BACK panel or duplication of information]

SHIELDTEC PLUS FOR DOGS

READ ENTIRE LABEL BEFORE EACH USE
USE ONLY ON DOGS OVER 12 WEEKS OF AGE

DO NOT USE ON CATS – MAY BE FATAL

PRECAUTIONARY STATEMENTS

HAZARDS TO HUMANS AND DOMESTIC ANIMALS

CAUTION

Hazards to Humans: Harmful if swallowed. Causes moderate eye irritation. Wash thoroughly with soap and water after handling and before eating, drinking, chewing gum, using tobacco, or using the toilet. Avoid contact with eyes or clothing.

Hazards to Domestic Animals: FOR EXTERNAL USE ON DOGS ONLY. Do not use on puppies under 12 weeks of age. Consult a veterinarian before using this product on debilitated, aged, medicated, pregnant, or nursing dogs. Consult a veterinarian before using on dogs with known organ dysfunction. **DO NOT USE ON CATS** or animals other than dogs. Keep cats away from treated dogs for 24 hours. If applied to or ingested by a cat, contact your veterinarian immediately. Cats which actively groom or engage in close physical contact with treated dogs may be at risk of serious harmful effect. Certain medications can interact with pesticides. It is advisable to consult a veterinarian before using this product with ANY other pesticide or drug.

Adverse Reactions: Some dogs may be sensitive to ingredients in this product. Adverse reactions in dogs may include skin sensitivity, lethargy, increased pruritus (itchiness), erythema (redness), rash and hair discoloration or hair loss at the application site. Observe the dog following treatments. Sensitivity may occur after using ANY pesticide product for pets. If signs of sensitivity occur, bathe your dog with a mild soap and rinse with large amounts of water. If signs continue, consult a veterinarian immediately. Keep cats away from treated dogs for 24 hours. Adverse reactions in cats could include neurological effects such as inactivity, tremors, and convulsions. If applied to or ingested by a cat, contact your veterinarian.

FIRST AID	
If swallowed:	<ul style="list-style-type: none">• Call a poison control center or doctor immediately for treatment advice.• Have person sip a glass of water if able to swallow.• Do not induce vomiting unless told to do so by the poison control center or doctor.• Do not give anything by mouth to an unconscious person.
If in eyes:	<ul style="list-style-type: none">• Hold eye open and rinse slowly and gently with water for 15-20 minutes.• Remove contact lenses, if present, after the first 5 minutes, then continue rinsing eye.• Call a poison control center or doctor for treatment advice.
HOT LINE NUMBER	
Have the product container or label with you when calling a Poison Control Center or doctor, or when going for treatment. You may also contact 1-844-685-9173 for emergency medical treatment.	

ENVIRONMENTAL HAZARDS

This product is extremely toxic to fish. Do not add directly to water. Do not contaminate water when disposing of product or packaging.

STORAGE AND DISPOSAL

Do not contaminate water, food, or feed by storage or disposal.

Pesticides Storage: Store this in a cool, dry (preferably locked) place away from heat and open flame, in an area inaccessible to children and animals. Protect from freezing.

Pesticide Disposal: Non-refillable container. If empty: Do not reuse or refill this container. Place in trash or offer recycling if available. If partly filled: Call your local solid waste agency for disposal instructions. Never place unused product down any indoor or outdoor drain.

SIDE EFFECTS

Monitor your dog after application. Side effects may include signs of skin irritation such as redness, scratching, or other signs of discomfort. Gastrointestinal signs such as vomiting or diarrhea have also been reported. If these or other side effects occur, consult your veterinarian or call 1-844-685-9173.

**KEEP OUT OF THE REACH OF CHILDREN
CAUTION**

SEE INSERT FOR ADDITIONAL PRECAUTIONARY STATEMENTS

[Background on all “No Cat icons & wording to be in yellow”]

DO NOT USE ON CATS - MAY BE FATAL
Keep away from treated dogs for 24 hours.
If applied to or ingested by a cat, contact your veterinarian immediately.



[Minimum 1.5 x 1.5 cm size for
“no cat image” on yellow background]
[No yellow package / box used]

[OPTIONAL: PRODUCT INSERT #1 (for inclusion with product tubes)]

SHIELDTEC PLUS FOR DOGS

READ ENTIRE LABEL BEFORE EACH USE

USE ONLY FOR DOGS “5 TO 15 LBS” [OR “16 TO 33 LBS”, “34 TO 66 LBS” OR “OVER 66 LBS”, depending on dog size] and OVER 12 WEEKS OF AGE

KEEP OUT OF REACH OF CHILDREN

CAUTION

ACTIVE INGREDIENTS

*Permethrin: (CAS #52645-53-1).....45.0%

Pyriproxyfen: (CAS #95737-68-1)5.0%

OTHER INGREDIENTS.....50.0%

TOTAL 100.0%

*cis/trans ratio: Max 55% (±) cis and min 45% (±) trans

MONTHLY FLEA, TICK AND MOSQUITO TREATMENT!

BREAKS FLEA LIFE CYCLE!

PREVENTS FLEA EGGS FROM DEVELOPING INTO BITING ADULTS FOR UP TO 123 DAYS!

KILLS FLEA EGGS [FOR UP TO 4 MONTHS] [FOR 123 DAYS]

KILLS AND REPELS TICKS FOR UP TO 4 WEEKS INCLUDING DEER TICKS! (which may carry Lyme disease), BROWN DOG TICKS & AMERICAN DOG TICKS!

KILLS AND REPELS MOSQUITOES!

SHIELDTEC PLUS FOR DOGS is an effective and easy to use product. Treating your dog with this product prevents flea eggs from developing into biting adults for up to [4 months] 123 days. As with all flea and tick control products, this product should be used as part of a program aimed at reducing flea populations in the dog’s environment (bedding, carpets, kennel, yard). Consult your veterinarian, for program recommendations.

DIRECTIONS FOR USE

It is a violation of Federal Law to use this product in a manner inconsistent with its labeling.

USE RESTRICTIONS:

DO NOT USE ON CATS OR KITTENS – MAY BE FATAL

USE ONLY ON DOGS OR PUPPIES 12 WEEKS OF AGE OR OLDER

DO NOT ALLOW CHILDREN TO APPLY THIS PRODUCT

Do not apply to dogs/puppies weighing less than 5 lbs. [for smallest size dog package only]

Do not use more than one tube per dog/puppy and do not retreat more than once per month.

Do not get into the dog’s eyes or mouth and do not allow your dog/puppy to ingest this product.

HOW TO APPLY:

[Only one of following descriptions per label, based upon dog size.]

[Option 1]

[Dogs 5 to 15 lbs]

Use only for Dogs Between 5 – [&] 15 lbs.: (1.0 mL applicator tubes) Apply one tube (1.0 mL) of product solution as a spot or stripe to the dog’s back between the shoulder blades. Do not use on dogs less than 5 pounds. [Used with separately listed statement #8 below]

[OR (Alternate language – for combining “how to apply” and “how to open” tube type)]

Use Only for Dogs 5 – [&] 15 lbs.: (1.0 mL applicator tubes)[Insert wording for tube type used – options listed below, #1 through #7] Apply one tube (1.0 mL) of product solution as a spot to the skin at three different locations along the dog’s back between the shoulder blades and base of the tail. Do not use on dogs less than 5 pounds. Squeeze tube to apply all of the solution to the dog’s skin.

[Dogs 16 to 33lbs]

Use only on dogs between 16 & 33 lbs: (1.5 mL applicator tubes) Apply one tube (1.5 mL) of product solution as a spot to the skin at three different locations along the dog's back between the shoulder blades and base of the tail. [Used with separately listed statement #8 below]

[OR (Alternate language – for combining “how to apply” and “how to open” tube type)]

Use Only on Dogs 16- [to] 33 lbs: (1.5 mL applicator tubes) [Insert wording for tube type used – options listed below, #1 through #7] Apply one tube (1.5 mL) of product solution as a spot to the skin at three different locations along the dog's back between the shoulder blades and base of the tail. Squeeze tube to apply all of the solution to the dog's skin.

[Dogs 34 to 66lbs]

Use only on dogs between 34 & 66 lbs: (3 mL applicator tubes) Apply approximately half of the tube (1.5 mL) of product solution as a spot or stripe to the skin to the dog's back between the shoulder blades and apply the rest of the tube's contents (1.5 mL) as a spot or stripe to the dog's back directly in front of the base of the tail. [Used with separately listed statement #8 below] [OR]

[(3 mL applicator tube) Apply the entire tube (3.0 mL) as a continuous stripe on the dog's back starting between the shoulder blades and ending directly in front of the base of the tail. [Used with separately listed statement #8 below]

[OR (Alternate language – for combining “how to apply” and “how to open” tube type)]

Use Only on Dogs 34- [to] 66 lbs: (3 mL applicator tubes) [Insert wording for tube type used – options listed below, #1 through #7] Apply approximately half of the tube (1.5 mL) of product solution as a spot or stripe to the skin on the dog's back between the shoulder blades and apply the rest of the tube's contents (1.5 mL) as a spot or stripe to the skin on the dog's back directly in front of the base of the tail. Squeeze tube to apply all of the solution to the dog's skin. [OR]

[(3 mL applicator tube) [Insert wording for tube type used – options listed below, #1 through #7] Apply the entire tube (3.0 mL) as a spot to the skin at three or more different locations along the dog's back between the shoulder blades and base of the tail. Squeeze tube to apply all of the solution to the dog's skin.

[Dogs over 66 lbs.]

Use Only for Dogs Over 66 lbs: (4.5 mL applicator tubes) Apply approximately half of the tube (2.25 mL) of product solution as a spot or stripe to the dog's back between the shoulder blades and apply the rest of the tube's contents (2.25 mL) as a spot or stripe to the dog's back directly in front of the base of the tail. DO NOT USE MORE THAN A SINGLE 4.5 mL DOSE. [Used with separately listed statement #8 below][OR]

(4.5 mL applicator tubes) Apply the entire tube (4.5 mL) as a continuous stripe on the dog's back starting between the shoulder blades and ending directly in front of the base of the tail. DO NOT USE MORE THAN A SINGLE 4.5 mL DOSE. [Used with separately listed statement #8 below]

[OR (Alternate language – for combining “how to apply” and “hot to open” tube type)]

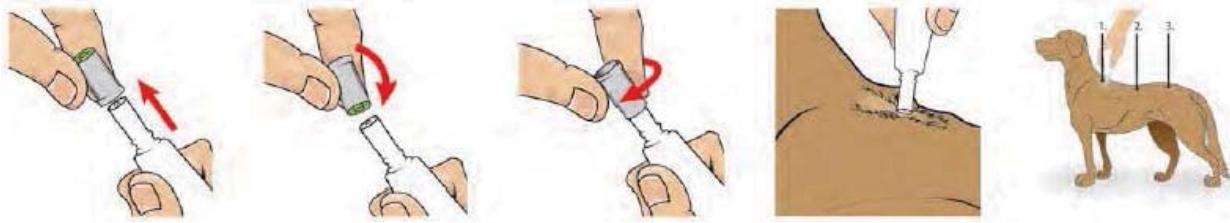
[Use Only for Dogs Over 66 lbs: (4.5 mL applicator tubes) [Insert wording for tube type used – options listed below, #1 through #7] Apply approximately half of the tube (2.25 mL) of product solution as a spot or stripe to the skin on the dog's back between the shoulder blades and apply the rest of the tube's contents (2.25 mL) as a spot or stripe to the skin on the dog's back directly in front of the base of the tail. DO NOT USE MORE THAN A SINGLE 4.5 mL DOSE. Squeeze tube to apply all of the solution to the dog's skin.

[(4.5 mL applicator tubes) [Insert wording for tube type used – options listed below, #1 through #7] Apply the entire tube (4.5 mL) as a spot to the skin at three or more different locations along the dog's back between the shoulder blades and base of the tail. DO NOT USE MORE THAN A SINGLE 4.5 mL DOSE. Squeeze tube to apply all of the solution to the dog's skin.

[Wording for the insertion above, based upon packaging tube type]

[1] [FOR TWIST TUBES]: Remove product from package. Holding tube upright, twist off cap. Invert tube over dog and use open end to part dog's hair.

[2] [FOR RATCHET TUBES]: Remove product tube from package. Holding tube upright, pull off cap. Turn the cap around and place opposite end of cap back on tube. Twist cap to break seal, remove cap from tube. Invert tube over dog and use open end to part dog's hair.



[Pictorial for Ratchet Tubes/ Drawing of how to apply]

[3] [FOR TUBES IN BLISTER CARD]: Remove product tube from package. Holding tube with the notched end pointing up and away from applicator's and dog's face and body, snap or cut off narrow end at notches. Invert tube over dog and use open end to part dog's hair.

[4] [FOR FLAT CARD UNIT-DOSE PACKAGING]: Separate cards along the perforated line. Holding separated card by its wide end with narrow end pointed up and away from applicator's and dog's face and body, cut along dotted line. Invert card over dog and use narrow end of the card to part dog's hair.

[5] [FOR FLAT CARD UNIT DOSE PACKAGING]: [For push pin type applicator] Remove one product tube from the card. With cap end pointed up and away from applicator's and dog's face and body, depress cap to pierce tube end. Carefully remove cap and invert tube over dog, with tube close to dog's skin.

[6] [FOR FOLDING CARD OR TABBED CARD UNIT-DOSE PACKAGING]: Remove product tab by tearing along perforation. Holding tab with tube end pointed up and away from applicator's and dog's face and body, cut along dotted line. Invert tab over dog and use narrow end of the card to part dog's hair.

[7] [BLISTER CARD WITH TRI-LAYER TUBES]: Remove product tube(s) from package. Fold along perforation between tubes and tear off one tube. {Return unused tubes to package} Holding tube with notched end pointing up and away from applicator's and dog's face and body, snap off narrow end at notches. Invert tube over dog and use open end to part dog's hair.

[8] FOR PERFORATED 3-PAK TUBE STRIPS WITH BREAKWAY TABS ON EACH TUBE: Separate one tube at a time from the 3-pak strip. Holding tube upright and away from applicator's and dog's face and body, snap the tip of the tube open. Invert tube over dog and use open end to part dog's hair.

[9] FOR DROPPER BOTTLE MULTI-DOSE PACKAGING: Insert dropper tube into insecticide solution, squeeze bulb and then release to fill tube barrel to 1.0 mL (1.5 mL) (3.0 mL) (4.5 mL) line. Position dropper tube end in the dog's hair next to skin and squeeze bulb to apply all of the solution to the dog's skin as indicated for dog's size.

[10] [FOR SQUEEZE ON TUBES]: Remove product tubes [vial] from the package. [Separate one tube from the others.] Hold the tube [vial] with notched end pointing up and away from the face and body [of applicator and dog]. Use scissors to cut off the narrow end at the notches along the lines. Invert tube over dog and use open end to part dog's hair.

[11] [FOR SNAP BACK TUBES]: Remove tube[s] from packaging. Using one applicator tube, hold the tube with the narrow end pointing up. [Snap the outline of the tip back to allow access to the [dotted tip] [applicator]]. [Snap [Cut] the applicator tip [backwards] [across the marked line] [to allow access to the] [dotted tip] [notches][applicator]]. [Holding tube away from your and your dog's eyes.] [[Snap][Cut] the applicator tip [at notched line] to open.] Invert tube over dog and use open end to part dog's hair.



STORAGE AND DISPOSAL

Do not contaminate water, food, or feed by storage or disposal.

Pesticides Storage: Store this in a cool, dry (preferably locked) place away from heat and open flame, in an area inaccessible to children and animals. Protect from freezing.

Pesticide Disposal: Non-refillable container. If empty: Do not reuse or refill this container. Place in trash or offer recycling if available. If partly filled: Call your local solid waste agency for disposal instructions. Never place unused product down any indoor or outdoor drain.

PRECAUTIONARY STATEMENTS

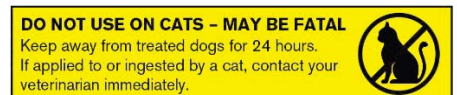
HAZARDS TO HUMANS AND DOMESTIC ANIMALS

CAUTION

Hazards to Humans: Harmful If swallowed or absorbed through the skin. Avoid contact with the skin, eyes, or clothing. Causes moderate eye irritation. Wash thoroughly with soap and water after handling and before eating, drinking, chewing gum, using tobacco, or using the toilet. Remove and wash contaminated clothing before reuse.

Hazards to Domestic Animals: FOR EXTERNAL USE ON DOGS ONLY. Do not use on puppies under 12 weeks of age. Consult a veterinarian before using this product on debilitated, aged, medicated, pregnant, or nursing dogs. Consult a veterinarian before using on dogs with known organ dysfunction. **DO NOT USE ON CATS** or animals other than dogs. Keep cats away from treated dogs for 24 hours. If applied to or ingested by a cat, contact your veterinarian immediately. Cats which actively groom or engage in close physical contact with treated dogs may be at risk of serious harmful effect. Certain medications can interact with pesticides. It is advisable to consult a veterinarian before using this product with ANY other pesticide or drug.

[Background on all “No Cat icons & wording to be in yellow”]



[Minimum 1.5 x 1.5 cm size for
“no cat image” on yellow background]
[No yellow package / box used]

FIRST AID	
If swallowed:	<ul style="list-style-type: none"> • Call a poison control center or doctor immediately for treatment advice. • Have person sip a glass of water if able to swallow. • Do not induce vomiting unless told to do so by the poison control center or doctor. • Do not give anything by mouth to an unconscious person.
If in eyes:	<ul style="list-style-type: none"> • Hold eye open and rinse slowly and gently with water for 15-20 minutes. • Remove contact lenses, if present, after the first 5 minutes, then continue rinsing eye. • Call a poison control center or doctor for treatment advice.
HOT LINE NUMBER	
Have the product container or label with you when calling a Poison Control Center or doctor, or when going for treatment. You may also contact 1-844-685-9173 for emergency medical treatment.	

Adverse Reactions: Some dogs may be sensitive to ingredients in this product. Adverse reactions in dogs may include skin sensitivity, lethargy, increased pruritus (itchiness), erythema (redness), rash and hair discoloration or hair loss at the application site. Observe the dog following treatments. Sensitivity may occur after using ANY pesticide product for pets. If signs of sensitivity occur, bathe your dog with a mild soap and rinse with large amounts of water. If signs continue, consult a veterinarian immediately. Keep cats away from treated dogs for 24 hours. Adverse reactions in cats could include neurological effects such as inactivity, tremors, and convulsions. If applied to or ingested by a cat, contact your veterinarian.

ENVIRONMENTAL HAZARDS

This product is extremely toxic to fish. Do not add directly to water. Do not contaminate water when disposing of product or packaging

NOTICE OF WARRANTY

NOTE: Seller warrants this product complies with the specifications expressed in this label. To the extent consistent with applicable law, Seller makes no other warranties and disclaims all other warranties, express or implied, including but not limited to warranties of merchantability and fitness for the intended purpose. To the extent consistent with applicable law, Seller's liability or default, breach, or failure under this label shall be limited to the amount of the purchase price. To the extent consistent with applicable law, Seller shall have no liability for consequential damages.

EPA Reg. No.

EPA Est. No.

Manufactured for:

Promika, LLC

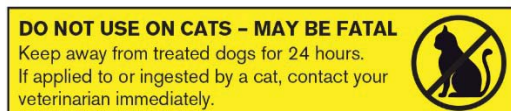
1204 Village Market Place, #273

Morrisville, NC 27560

SIDE EFFECTS

Monitor your dog after application. Side effects may include signs of skin irritation such as redness, scratching, or other signs of discomfort. Gastrointestinal signs such as vomiting or diarrhea have also been reported. If these or other side effects occur, consult your veterinarian or call 1-844-685-9173

[Background on all "No Cat icons & wording to be in yellow"]



[Minimum 1.5 x 1.5 cm size for
"no cat image" on yellow background]
[No yellow package / box used]

[OPTIONAL: PRODUCT INSERT – Monthly Reminder (for inclusion with product tubes)]

[Printed on approximately 3’x4” peel off paper, located inside package – not visible from outside]

SHIELDTEC PLUS FOR DOGS

Use these calendar stickers to remind you when your dog is due for it’s next monthly application.

[Background on all “No Cat icons & wording to be in yellow”]



[Minimum 1.5 x 1.5 cm size for
“no cat image” on yellow background]
[No yellow package / box used]

Monthly Sticker	Monthly Sticker	Monthly Sticker	Monthly Sticker
Do Not Use On Cats	Do Not Use On Cats	Do Not Use On Cats	Do Not Use On Cats
Month 1	Month 2	Month 3	Month 4

[Number of sticker dependent upon tube content of package]

[OPTIONAL PRODUCT INSERT #2 (for inclusion with product tubes)]

SHIELDTEC PLUS FOR DOGS

(size of tube in mL) for Dogs that weight (Dog's weight range)

**KEEP OUT OF REACH OF CHILDREN
CAUTION**

ACTIVE INGREDIENTS

*Permethrin: (CAS #52645-53-1).....45.0%
Pyriproxyfen: (CAS #95737-68-1)5.0%

OTHER INGREDIENTS.....50.0%

TOTAL100.0%

*cis/trans ratio: Max 55% (±) cis and min 45% (±) trans

- Kills and repels ticks for up to 4 weeks!
- Prevents re-infestation of fleas for up to 4 weeks
- Kills flea eggs for up to 4 months
- Kills and repels lice, mites and mosquitos on dogs for up to 4 weeks

DIRECTIONS FOR USE

It is a violation of Federal law to use this product in a manner inconsistent with its labeling.

USE RESTRICTIONS:

DO NOT USE ON CATS OR KITTENS – MAY BE FATAL

USE ONLY ON DOGS OR PUPPIES 12 WEEKS OF AGE OR OLDER.

DO NOT ALLOW CHILDREN TO APPLY THIS PRODUCT

Do not apply to dogs/puppies weighing less than 5 lbs (for smallest size dog package only)

Do not use more than one tube per dog/puppy and do not retreat more than once per month.

Do not get in the dog's eyes or mouth and do not allow your dog/puppy to ingest this product.

[One of the following descriptions per label, based upon dog size.]

[Option 1]

[Dogs 5 to 15 lbs]

Use only for Dogs Between 5 – [&] 15 lbs.:

(1.0 mL applicator tubes)

Apply one tube (1.0 mL) of product solution as a spot or stripe to the dog's back between the shoulder blades. Do not use on dogs less than 5 pounds. [Used with separately listed statement #8 below]

[Dogs 16 to 33lbs]

Use only on dogs between 16 & 33 lbs:

(1.5 mL applicator tubes)

Apply one tube (1.5 mL) of product solution as a spot to the skin at three different locations along the dog's back between the shoulder blades and base of the tail. [Used with separately listed statement #8 below]

[Dogs 34 to 66lbs]

Use only on dogs between 34 & 66 lbs:

(3 mL applicator tubes)

Apply approximately half of the tube (1.5 mL) of product solution as a spot or stripe to the skin to the dog's back between the shoulder blades and apply the rest of the tube's contents (1.5 mL) as a spot or stripe to the dog's back directly in front of the base of the tail. [Used with separately listed statement #8 below] **[OR]**

Apply the entire tube (3.0 mL) as a continuous stripe on the dog's back starting between the shoulder blades and ending directly in front of the base of the tail. [Used with separately listed statement #8 below]

[Dogs over 66 lbs.]

Use Only for Dogs Over 66 lbs:

(4.5 mL applicator tubes)

Apply approximately half of the tube (2.25 mL) of product solution as a spot or stripe to the dog's back between the shoulder blades and apply the rest of the tube's contents (2.25 mL) as a spot or stripe to the dog's back directly in front of the base of the tail. DO NOT USE MORE THAN A SINGLE 4.5 mL DOSE. [Used with separately listed statement #8 below][OR]

Apply the entire tube (4.5 mL) as a continuous stripe on the dog's back starting between the shoulder blades and ending directly in front of the base of the tail. DO NOT USE MORE THAN A SINGLE 4.5 mL DOSE. [Used with separately listed statement #8 below]

HOW TO APPLY:

FOR PERFORATED 3-PAK TUBE STRIPS WITH BREAKWAY TABS ON EACH TUBE: Separate one tube at a time from the 3-pak perforated strip. Holding tube upright and away from face and body, snap the tip of the tube open. Invert tube over dog and use open end to part dog's hair. Squeeze tube firmly to apply all of the solution to the dog's skin.

[Pictorial/Drawing of how to apply]

SHIELDTEC PLUS FOR DOGS is an effective and easy to use product. Treating your dog with this product prevents flea eggs from developing into biting adults for up to [4 months] 123 days. As with all flea and tick control products, this product should be used as part of a program aimed at reducing flea populations in the dog's environment (bedding, carpets, kennel, yard). Consult your veterinarian, for program recommendations.

SIDE EFFECTS

Monitor your dog after application. Side effects may include signs of skin irritation such as redness, scratching, or other signs of discomfort. Gastrointestinal signs such as vomiting or diarrhea have also been reported. If these or other side effects occur, consult your veterinarian or call 1-844-685-9173.

PRECAUTIONARY STATEMENTS

HAZARDS TO HUMANS AND DOMESTIC ANIMALS

CAUTION

Hazards to Humans: Harmful if swallowed. Causes moderate eye irritation. Wash thoroughly with soap and water after handling and before eating, drinking, chewing gum, using tobacco, or using the toilet. Avoid contact with eyes or clothing.

Hazards to Domestic Animals: FOR EXTERNAL USE ON DOGS ONLY. Do not use on puppies under 12 weeks of age. Consult a veterinarian before using this product on debilitated, aged, medicated, pregnant, or nursing dogs. Consult a veterinarian before using on dogs with known organ dysfunction. **DO NOT USE ON CATS** or animals other than dogs. Keep cats away from treated dogs for 24 hours. If applied to or ingested by a cat, contact your veterinarian immediately. Cats which actively groom or engage in close physical contact with treated dogs may be at risk of serious harmful effect. Certain medications can interact with pesticides. It is advisable to consult a veterinarian before using this product with ANY other pesticide or drug.

FIRST AID

If swallowed:	<ul style="list-style-type: none">• Call a poison control center or doctor immediately for treatment advice.• Have person sip a glass of water if able to swallow.• Do not induce vomiting unless told to do so by the poison control center or doctor.• Do not give anything by mouth to an unconscious person.
If in eyes:	<ul style="list-style-type: none">• Hold eye open and rinse slowly and gently with water for 15-20 minutes.• Remove contact lenses, if present, after the first 5 minutes, then continue rinsing eye.• Call a poison control center or doctor for treatment advice.

HOT LINE NUMBER

Have the product container or label with you when calling a Poison Control Center or doctor, or when going for treatment. You may also contact 1-844-685-9173 for emergency medical treatment.

Adverse Reactions: Some dogs may be sensitive to ingredients in this product. Adverse reactions in dogs may include skin sensitivity, lethargy, increased pruritus (itchiness), erythema (redness), rash and hair discoloration or hair loss at the application site. Observe the dog following treatments. Sensitivity may occur after using ANY pesticide product for pets. If signs of sensitivity occur, bathe your dog with a mild soap and rinse with large amounts of water. If signs continue, consult a veterinarian immediately. Keep cats away from treated dogs for 24 hours. Adverse reactions in cats could include neurological effects such as inactivity, tremors, and convulsions. If applied to or ingested by a cat, contact your veterinarian.

ENVIRONMENTAL HAZARDS

This product is extremely toxic to fish. Do not add directly to water. Do not contaminate water when disposing of product or packaging

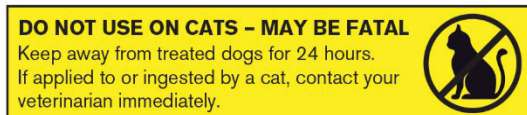
NOTICE OF WARRANTY

NOTE: Seller warrants this product complies with the specifications expressed in this label. To the extent consistent with applicable law, Seller makes no other warranties and disclaims all other warranties, express or implied, including but not limited to warranties of merchantability and fitness for the intended purpose. To the extent consistent with applicable law, Sellers liability or default, breach, or failure under this label shall be limited to the amount of the purchase price. To the extent consistent with applicable law, Seller shall have no liability for consequential damages.

EPA Reg. No.
Manufactured for:
Promika, LLC
1204 Village Market Place, #273
Morrisville, NC 27560

EPA Est. No.

[Background on all “No Cat icons & wording to be in yellow”]



[Minimum 1.5 x 1.5 cm size for
“no cat image” on yellow background]
[No yellow package / box used]

TUBE LABEL [Folding card and flat card packaging designs]

SHIELDTEC PLUS FOR DOGS

PERMETHRIN 45%
PYRIPROXYFEN 5%

**KEEP OUT OF REACH OF CHILDREN
CAUTION**

[CAT ICON IN CIRCLE WITH SLASH THROUGH IT LOCATED ON TUBE]

[Background on all “No Cat icons & wording to be in yellow”]



[Minimum 1.5 x 1.5 cm size for
“no cat image” on yellow background]
[No yellow package / box used]

READ DIRECTIONS AND PRECAUTIONS BEFORE USING

[ONE OF THE FOLLOWING TEXTS PER TUBE OR VIAL – SEE ATTACHMENT A]

Only for Dogs 5 to 15 lbs.
And over 12 weeks of age.

Only for Dogs 16 to 33 lbs.
And over 12 weeks of age.

Only for Dogs 34 to 66 lbs.
And over 12 weeks of age.

Only for Dogs over 66 lbs.
And over 12 weeks of age.

EPA Reg No.
EPA Est. No.
Lot No.

{Front Label}

{Icon as indicated}

{Back Label}

{Brand Name} For Dogs [X-Y] lbs ≥8 wks permethrin 45%, pyriproxyfen 5% 0.09 fl oz (or) 0.15 fl oz (or) 0.30 fl oz (or) 0.45 fl oz {label code}		KEEP OUT OF REACH OF CHILDREN CAUTION: Read directions and precautions before using. Use scissors to open. EPA REG. No. 91234-XXX {label code}
---	--	---

{EPA REG No may be on either the front or back label}

{END – TUBE/VIAL LABEL}

TAB LABEL [Folding card and tabbed card packaging designs]

SHIELDTEC PLUS FOR DOGS

ACTIVE INGREDIENTS

*Permethrin: (CAS #52645-53-1).....45.0%
 Pyriproxyfen: (CAS #95737-68-1)5.0%
OTHER INGREDIENTS.....50.0%

*cis/trans ratio: Max 55% (±) cis and min 45% (±) trans

[Background on all “No Cat icons & wording to be in yellow”]



[Minimum 1.5 x 1.5 cm size for
 “no cat image” on yellow background]
 [No yellow package / box used]

SEE MAIN LABEL FOR ADDITIONAL
 PRECUATIONS AND ISNTRUCTIONS FOR USE

[ONE OF THE FOLLOWING TEXTS PER TAB – SEE ATTACHMENT A]

Only for Dogs 5 to 15 lbs.
 And over 12 weeks of age.

Only for Dogs 16 to 33 lbs.
 And over 12 weeks of age.

Only for Dogs 34 to 66 lbs.
 And over 12 weeks of age.


Only for Dogs over 66 lbs.
 And over 12 weeks of age.

EPA Reg No.
 EPA Est. No.
 Lot No.

{Front Label}

{Icon as indicated}

{Back Label}

{Brand Name} For Dogs [X-Y] lbs ≥8 wks permethrin 45%, pyriproxyfen 5% 0.09 fl oz (or) 0.15 fl oz (or) 0.30 fl oz (or) 0.45 fl oz {label code}		KEEP OUT OF REACH OF CHILDREN CAUTION: Read directions and precautions before using. Use scissors to open. EPA REG. No. 91234-XXX {label code}
--	---	--

{EPA REG No may be on either the front or back label}

OUTER BOX LABEL (Contains the following labeling plus full product label)

SHIELDTEC PLUS FOR DOGS

PICTURE OF THE FLEA LIFE CYCLE HERE

As a part of a flea control program, use a suitable outdoor yard spray. Indoors, use, a suitable carpet spray/powder and clean dog bedding and premises

**4 STEPS FOR
FLEA CONTROL**

Consult your veterinarian prior to using this product with ANY other pesticide or drug.

- Step 1 – Shampoo or dip your dog.
- Step 2 – Treat indoor and outdoor premises with indoor and outdoor sprays, foggers and powders.
- Step 3 – Apply SHIELDTEC PLUS FOR DOGS for up to four weeks of adult flea and tick control.
- Step 4 – Maintenance treatments with on-animal sprays and powders.

[Background on all “No Cat icons & wording to be in yellow”]



[Minimum 1.5 x 1.5 cm size for
“no cat image” on yellow background]
[No yellow package / box used]

ATTACHMENT A

VIEW OF APPLICATOR VIAL / TUBE LABELING [OR IMMEDIATE CONTAINER LABELING]

SHIELDTEC PLUS FOR DOGS
Only For Dogs 5 to 15 lbs and over 12 weeks of age.

KEEP OUT OF REACH OF CHILDREN
CAUTION

EPA Reg. No.

READ DIRECTIONS AND PRECAUTIONS BEFORE USING

[Black print for text & “No Cat Icon”/ yellow background under icon & associated wording]

[ONE OF THE FOLLOWING TEXTS PER VIAL / TUBE OR IMMEDIATE CONTAINER LABELING]

Only for Dogs 5 to 15 lbs.
And over 12 weeks of age.

Only for Dogs 16 to 33 lbs.
And over 12 weeks of age.

Only for Dogs 34 to 66 lbs.
And over 12 weeks of age.

Only for Dogs over 66 lbs.
And over 12 weeks of age.