



U.S. ENVIRONMENTAL PROTECTION AGENCY

Office of Pesticide Programs  
Registration Division (7505T)  
1200 Pennsylvania Ave., N.W.  
Washington, D.C. 20460

EPA Reg. Number:

91234-294

Date of Issuance:

9/22/23

NOTICE OF PESTICIDE:

Registration  
 Reregistration  
(under FIFRA, as amended)

Term of Issuance:

Unconditional

Name of Pesticide Product:

A177.05

Name and Address of Registrant (include ZIP Code):

Atticus, LLC  
5000 CentreGreen Way, Suite 100  
Cary, NC 27513

**Note:** Changes in labeling differing in substance from that accepted in connection with this registration must be submitted to and accepted by the Registration Division prior to use of the label in commerce. In any correspondence on this product always refer to the above EPA registration number.

On the basis of information furnished by the registrant, the above named pesticide is hereby registered under the Federal Insecticide, Fungicide, and Rodenticide Act (FIFRA).

Registration is in no way to be construed as an endorsement or recommendation of this product by the Agency. In order to protect health and the environment, the Administrator, on his motion, may at any time suspend or cancel the registration of a pesticide in accordance with the Act. The acceptance of any name in connection with the registration of a product under this Act is not to be construed as giving the registrant a right to exclusive use of the name or to its use if it has been covered by others.

This product is unconditionally registered in accordance with FIFRA section 3(c)(5) provided that you:

1. Submit and/or cite all data required for registration/reregistration/registration review of your product when the Agency requires all registrants of similar products to submit such data.

*Continues page 2*

Signature of Approving Official:

Kara Welch, Product Manager 3  
IVB1, Registration Division (7505T)

Date:

9/22/23

2. Make the following label changes before you release the product for shipment:
  - Revise the EPA Registration Number to read, “EPA Reg. No. 91234-294.”
3. Submit one copy of the final printed label for the record before you release the product for shipment.

Should you wish to add/retain a reference to the company’s website on your label, then please be aware that the website becomes labeling under FIFRA and is subject to review by the Agency. If the website is false or misleading, the product would be misbranded and unlawful to sell or distribute under FIFRA section 12(a)(1)(E). 40 CFR 156.10(a)(5) lists examples of statements EPA may consider false or misleading. In addition, regardless of whether a website is referenced on your product’s label, claims made on the website may not substantially differ from those claims approved through the registration process. Therefore, should the Agency find or if it is brought to our attention that a website contains false or misleading statements or claims substantially differing from the EPA approved registration, the website will be referred to the EPA’s Office of Enforcement and Compliance.

If these conditions are not complied with, the registration will be subject to cancellation in accordance with FIFRA section 6. Your release for shipment of the product constitutes acceptance of these conditions. A stamped copy of the label is enclosed for your records.

The record for this product currently contains the following CSF:

- Basic CSF dated 3/31/2023

If you have any questions, you may contact Hester Dingle at 202-566-2596 or via email at [dingle.hester@epa.gov](mailto:dingle.hester@epa.gov).

Enclosure

{Note to reviewer: [Text] in brackets denotes optional or explanatory language}  
{Note to reviewer: {Text} in braces denotes where in the final label text will appear}  
{BOOKLET FRONT PANEL LANGUAGE}  
Sublabel A

BETA-CYFLUTHRIN | GROUP 3A | INSECTICIDE

# A177.05 [™]

[Alternate Brand Name: Cyprus Ultra SC Premise Spray, Cyprus Ultra SC Concentrate, Tirade Ultra SC]

[Contains Beta-cyfluthrin, the active ingredient used in Tempo® SC [Ultra] [Ultra Premise Spray] [Ultra Pest Control Concentrate]].

[Spider, Ant, Mosquito, Grain Beetle, Weevils, Indian meal moth, and/or Cockroach Images from page 14]  
[For Both Indoor and Outdoor Use.]

<b>ACTIVE INGREDIENT:</b>	<b>(% by weight)</b>
Beta-Cyfluthrin, Cyano(4-fluoro-3-phenocyclohexyl)methyl 3-(2,2-dichloroethenyl)-2,2-dimethyl-cyclopropanecarboxylate.....	11.8%
<b>OTHER INGREDIENTS:</b> .....	<b>88.2%</b>
<b>TOTAL</b> .....	<b>100.0%</b>

Contains 1 lb of Beta-Cyfluthrin per gallon.

## KEEP OUT OF REACH OF CHILDREN CAUTION

**Si usted no entiende la etiqueta, busque a alguien para que se la explique a usted en detalle. (If you DO NOT understand the label, find someone to explain it to you in detail.)**

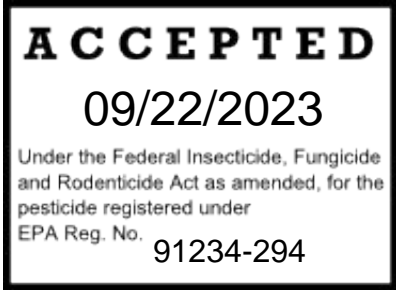
See [below] [inside label booklet] for [additional] [First Aid,] [and] [Precautionary Statements] [and] [Directions for Use].

[A177.05 is not manufactured, or distributed by [Bayer] [Elanco], seller of [Tempo® SC Ultra] [Tempo® SC Ultra Premise Spray] [Tempo® SC Ultra Pest Control Concentrate]].

{Note to reviewer: The Contains Statement and disclaimer will appear on the front panel, if used on the final product packaging, in close proximity to each other and in text which does not excessively stand out over the rest of the labeling text or draw greater attention than other required precautionary labeling.}

EPA Reg. No.: 91234-XX  
EPA Est. No.:  
Net Contents:

Manufactured for:  
**Atticus, LLC**  
940 NW Cary Parkway, Suite 200  
Cary, NC 27513



## {LANGUAGE INSIDE BOOKLET}

<b>FIRST AID</b>	
<b>If swallowed:</b>	<ul style="list-style-type: none"><li>• Call a poison control center or doctor immediately for treatment advice.</li><li>• Have person sip a glass of water if able to swallow.</li><li>• <b>DO NOT</b> induce vomiting unless told to do so by the poison control center or doctor.</li><li>• <b>DO NOT</b> give anything by mouth to an unconscious person.</li></ul>
<b>If on skin or clothing:</b>	<ul style="list-style-type: none"><li>• Take off contaminated clothing.</li><li>• Rinse skin immediately with plenty of water for 15-20 minutes.</li><li>• Call a poison control center or doctor for treatment advice.</li></ul>
<b>If in eyes:</b>	<ul style="list-style-type: none"><li>• Hold eye open and rinse slowly and gently with water for 15-20 minutes.</li><li>• Remove contact lenses, if present, after the first 5 minutes, then continue rinsing eye.</li><li>• Call a poison control center or doctor for treatment advice.</li></ul>
<b>If inhaled:</b>	<ul style="list-style-type: none"><li>• Move person to fresh air.</li><li>• If person is not breathing, call 911 or an ambulance, then give artificial respiration, preferably mouth-to-mouth, if possible.</li><li>• Call a poison control center or doctor for further treatment advice.</li></ul>
<b>HOT LINE NUMBER</b>	
Have the product container or label with you when calling a poison control center or doctor, or going for treatment. You may also contact SafetyCall at <b>1-844-685-9173</b> for emergency medical treatment information.	
<b>Note to Physician:</b> No specific antidote is available. Treat the patient symptomatically.	

**For Chemical Emergency:  
Spill, Leak, Fire, Exposure, or Accident,  
Call CHEMTREC Day or Night  
Within USA and Canada: 1-800-424-9300 or +1 703-527-3887 (collect calls accepted)**

## **PRECAUTIONARY STATEMENTS HAZARDS TO HUMANS AND DOMESTIC ANIMALS CAUTION**

Harmful if swallowed, inhaled, or absorbed through skin. Causes moderate eye irritation. Avoid contact with eyes, skin, or clothing. Avoid breathing spray mist. Wash thoroughly with soap and water after handling and before eating, drinking, chewing gum, using the toilet, or using tobacco. Remove contaminated clothing and wash before reuse.

### **ENVIRONMENTAL HAZARDS**

This pesticide is extremely toxic to fish and aquatic invertebrates. Remove from premises or tightly cover fish tanks and disconnect aerators when applying indoors where such containers are present. To protect the environment, **DO NOT** allow pesticide to enter or run off into storm drains, drainage ditches, gutters or surface waters. **DO NOT** apply directly to water, to areas where surface water is present or to intertidal areas below the mean high water mark. Applying this product in calm weather when rain is not predicted for the next 24 hours will help to ensure that wind or rain does not blow or wash pesticide off the treatment area. Rinsing application equipment over the treated area will help avoid run off to water bodies or drainage systems.

**DO NOT** apply when weather conditions favor drift from treated areas. Drift and runoff from treated areas may be hazardous to aquatic organisms in neighboring areas. **DO NOT** contaminate water when cleaning equipment or when disposing of equipment wash waters. Apply this product only as specified on this label.

This pesticide is highly toxic to bees exposed to direct treatment or residues on crops or weeds. **DO NOT** apply **A177.05** or allow it to drift onto crops or weeds on which bees are actively foraging. Additional information may be obtained by consulting your Cooperative Extension Service.

## **PHYSICAL & CHEMICAL HAZARDS**

**DO NOT** use water-based sprays of this product in conduits, motor housings, junction boxes, switch boxes, or other electrical equipment because of possible shock hazard. Do not mix or allow to come in contact with any oxidizing agent. Hazardous chemical reaction may occur.

## **DIRECTIONS FOR USE**

**It is a violation of Federal law to use this product in a manner inconsistent with its labeling.**

**Read the entire label before using this product.**

**DO NOT use this product to formulate other end-use products.**

**For both indoor and outdoor use.**

## **PRODUCT FACTS**

- **[Editorial Note – Marketing claim Positioned here]**
- **Low Odor**
- **Non-staining**
- **No phytotoxicity on a wide range of ornamentals**

### **KILLS:**

Angoumois Grain Moths, Ants (except Pharaoh and Harvester), Fire Ants\*, Aphids, Armyworms, Azalea caterpillars, Bagworms, Beetles, Billbugs (adult), Black turfgrass atenioides (adult), Black vine weevil (adult), Blow Flies, Bluegrass billbug (adult), Boxelder Bugs, Bristly rose slugs, Brown Marmorated Stinkbugs[\*\*], Budworms, Cadelles Beetles, Cadelles, California oakworms, Cankerworms, Casebearers, Carpenter Ants, Carpet Beetles, Caterpillars, Cheese Mites, Chiggers, Chinch Bugs, Chocolate Moths, Cigarette Beetles, Clothes Moths, Clover Mites, Cockroaches, Confused Flour Beetles, Crickets, Cutworms, Darkling Beetles, Dermestids, Dermestid Beetles, Drugstore Beetles, Earwigs, Elm Leaf Beetles, Elm spanworms, Filth Flies, Firebrats, Flea beetles, Flies, Flour Beetles, Foreign Grain Beetles, Fruit Flies, Fruitworms, Fungus Gnats, Grain Mites, Granary weevil, Grasshoppers, Ground Beetles, Hairy Fungus Beetle, Fungus Gnats, Gypsy Moth Larva, Hide Beetles, Hairy fungus Beetles, Hornets, House Flies, Hyperodes weevil (adult), Indian Meal Moths, Japanese Beetles (adult), June beetles (adult), Kudzu (globular stink) Bugs[\*\*], Lace Bugs, Larder Beetles, Leaf-Feeding Caterpillars, Leafhoppers, Leafrollers, Leaf Skeletonizers, Leather Beetles, Lesser Grain Borers Beetles, Lesser Mealworms, Litter Beetles, Loopers, Mealy Bugs, Mediterranean Flour Moths, Merchant Grain Beetles, Mealworms, Mealworm Beetles, Millipedes, Mole Crickets, Mosquitoes, Moths, Multicolored Asian Lady Beetles, Oleander Moth Larvae, Orchid weevil, Pear psylla, Peppertree psyllid, Phorid Flies, Pillbugs, Pine Shoot Moths, Pine Tip Moths, Plant Bugs, Psocids[\*\*], Psylla, Red Flour Beetles, Redhumped Caterpillars, Rice Weevils Beetles, Sawfly larvae, Sawtoothed Grain Beetles, Scale Insects (crawler stages), Sciarid Flies, Silverfish, Sod Webworms, Sowbugs, Spider Mites, Spiders, Spittlebugs, Springtails[\*\*], Stable Flies, Striped beetles, Striped oakworms, Tent Caterpillars, Thrips, Ticks, Tussock moth larvae, Walnut caterpillars, Warehouse Beetles, Webworms, Whiteflies, Yellowjackets\*, and Yellownecked caterpillars.

\*Direct spray only

[\*\*Not for Use in California]

## FOR USE IN AND AROUND

Apartments; Bakeries; Bottling Facilities; Breweries; Buses; Cafeterias; Candy Plants; Cereal Processing and Manufacturing Plants; Correctional Facilities; Dairies and Dairy Product Processing Plants; Day Care Centers; Egg Laying Facilities; Food Handling Facilities; Food Manufacturing Plants; Food Processing Plants; Frozen Food Plants; Grain Mills; Granaries; Greenhouses (structures only) (non-commercial); Hospitals; Hotels; Houses; Industrial Buildings; Kitchens; Laboratories; Livestock Housing; Manufacturing Establishments; Mausoleums; Meat and Produce; Nursing Homes; Offices; Pet Kennels; Pickle Factories; Poultry Houses; Processing and Packing Plants; Resorts; Restaurants and other Food Handling Establishments; Schools; Spice Plants; Stores; Warehouses; and Wineries].

## A177.05

Suspension concentrate containing 1 lb beta- cyfluthrin per gallon.

## WHERE TO APPLY

Apply in areas that are conducive for pest activity or where pests have been observed or can find shelter:

- In and around buildings and structures
- On residential, commercial and recreational areas of turf
- On ornamentals in landscapes and interior plantscapes

## MIXING INFORMATION

- Shake this product well before measuring concentrate for dilution in water.
- Mix the appropriate amount of this product with water.
- Add product when filling spray tank with water; shake or agitate mixture.
- Diluted spray mixture can be stored overnight. Agitate before using.

## HOW TO APPLY

- General surface, spot, mist, or crack and crevice application.
- Broadcast application to turf and foliar application to ornamentals.
- Spray pests and surfaces from a distance of 8 inches.

## RE-APPLY

- Every 7 to 10 days, if needed.
- For turf, re-apply if needed, but not more than 6 times per year.

## RE-ENTRY

- Avoid contact with treated surfaces until dry.
- **DO NOT** allow people or pets to contact treated areas until dry.

## QUESTIONS

For questions or comments, call toll-free [Insert phone number]

## APPLICATION RESTRICTIONS

- Remove or tightly cover fish tanks and disconnect aerators during application.
- Remove pets during application and until treated surfaces are completely dry.
- Avoid contact with treated surfaces until dry.
- When treating areas directly over your head, wear eye protection (safety glasses, goggles or face shield) and a minimum of a NIOSH-approved particulate filtering facepiece respirator with any N, R or P filter; OR a NIOSH-

approved elastomeric particulate respirator with any N, R or P filter; OR a NIOSH-approved powered air purifying respirator with HE filters.

- **DO NOT** treat entire area of floor or floor coverings.
- **DO NOT** apply where electrical short circuits can occur.
- **DO NOT** apply in occupied hospital and/or nursing home rooms. Occupants may return when surfaces have dried.
- **DO NOT** apply in occupied classrooms. Classrooms may be used again after treated surfaces have dried.
- **DO NOT** apply to parts of furniture or upholstery where prolonged contact by humans will occur.
- **DO NOT** apply as a space spray.
- For ornamental/recreational turf applications, **DO NOT** apply when the wind speed is greater than 15 mph.
- **DO NOT** allow to enter indoor or outdoor drains.
  - *No permita la entrada a desagües internos o externos.*
- Follow proper disposal procedures on this label
  - *Siga las indicaciones del etiquetado para el desecho apropiado del producto.*
- All outdoor applications must be limited to spot or crack-and-crevice treatments only, except for the following permitted uses:
  1. Application to pervious surfaces such as soil, lawn, turf, and other vegetation;
  2. Perimeter band treatments of 7 feet wide or less from the base of a man-made structure to pervious surfaces (e.g., soil, mulch, or lawn);
  3. Applications to underside of eaves, soffits, doors, or windows permanently protected from rainfall by a covering, overhang, awning, or other structure;
  4. Applications around potential exterior pest entry points into man-made structures such as doorways and windows, when limited to a band not to exceed one inch;
  5. Applications to vertical surfaces (such as the side of a man-made structure) directly above impervious surfaces (e.g., driveways, sidewalks, etc.), up to 2 feet above ground level;
  6. Applications to vertical surfaces directly above pervious surfaces, such as soil, lawn, turf, mulch or other vegetation) only if the pervious surface does not drain into ditches, storm drains, gutters, or surface waters.
- Spot treatments must not exceed two square feet in size (for example, 2 ft. by 1 ft. or 4 ft. by 0.5 ft.).
- **DO NOT** apply this product by aerial application or by any type of chemigation system.
- **DO NOT** apply when turf grass areas are water logged or the soil is saturated with water (i.e., will not accept irrigation).
- **DO NOT** apply to any food crop.



#### **BUFFER FROM WATER**

For soil or foliar applications, **DO NOT** apply by ground within 25 feet of lakes, reservoirs, rivers, permanent streams, marshes or natural ponds, estuaries and commercial fish farm ponds.

#### **WATER PROTECTION**

**DO NOT** spray the product into fish pools, ponds, streams, or lakes. **DO NOT** apply directly to sewers or storm drains, or to any area like a drain or gutter where drainage to sewers, storm drains, water bodies, or aquatic habitat can occur.

**DO NOT** allow the product to enter any drain during or after application.

**DO NOT** allow drift onto ponds, streams, or lakes.

**DO NOT** apply directly to impervious horizontal surfaces such as sidewalks, driveways, and patios except as a spot or crack-and-crevice treatment.

**DO NOT** apply or irrigate to the point of runoff.

## **RAIN-RELATED STATEMENTS**

**DO NOT** make applications during the rain. Avoid making applications when rainfall is expected before the product has sufficient time to dry (minimum 4 hours). Rainfall within 24 hours after application may cause unintended runoff of pesticide application.

**Crack and Crevice Treatments:** Treat surfaces to ensure thorough coverage but avoid runoff. To treat insects harbored in voids and cracks-and-crevices, applications must be made in such a manner to limit dripping and avoid runoff onto untreated structural surfaces and plants.

## **TANK MIXING**

This product may be tank-mixed with other registered pesticides unless expressly prohibited by the product label. A small volume mixing test with other products is recommended to ensure compatibility. It is the pesticide user's responsibility to ensure that all products are registered for the intended use. Read and follow the applicable restrictions and limitations and directions for use on all product labels involved in tank mixing. Users must follow the most restrictive directions for use and precautionary statements of each product in the tank mixture.

## **INDOOR PESTS**

Use this product to control indoor pests by application as a general surface treatment, spot treatment, crack and crevice treatment, or void injection by spray, mist, or foam.

## **WHERE TO APPLY**

Apply in areas that are conducive for pest activity or where pests have been observed or can find shelter. Use general surface, spot, mist, or crack and crevice applications.

Treat areas where pests normally feed, hide, or travel (floor-wall junctions, corners, around water pipes, behind and under refrigerators, cabinets, sinks and stoves).

This product can be applied to walls, floors, ceilings, in and around cabinets, between, behind and beneath equipment and appliances, around floor drains, window and door frames and around plumbing, sinks and other possible pest harborage sites.

Treat entry points. Examples of pest entry points are around water pipes, utility penetrations, windows, doors, vents, and eaves. Void applications can be made behind veneers, piers, and chimney bases, into rubble foundations, into block voids and structural voids, wall voids, under slabs, stoops, porches, or to the soil in crawlspaces, and other similar voids. Treat floors, floor coverings, carpets, or rugs to kills ticks.

## **USE RATE**

0.025% -- 8 ml (0.27 fl oz) per gal water

0.05% -- 16 ml (0.54 fl oz) per gal water

- Use higher labeled rate for severe infestations and longest residual.

## **HOW TO APPLY (Also see: APPLICATION FOR INDOOR PESTS)**

### General Surface Applications

- Use a low-pressure system (**DO NOT** exceed 50 psi at nozzle tip), with a fan-type nozzle to apply the dilution uniformly.
- In the home, all food processing surfaces and utensils should be covered or thoroughly washed following treatment. Cover exposed food or remove from area being treated.

### Spot, Mist, or Crack and Crevice Applications

- Apply directly into voids, cracks and crevices using spray or foam equipment.
- Spray: Use a low-pressure system (**DO NOT** exceed 50 psi at nozzle tip), with a pinpoint or variable pattern nozzle or applicator equipment that delivers low volume treatments, such as the Micro-Injector® or Actisol®.
- Foam: Use appropriate foam generating equipment to supply a sufficient volume of foam. Mix the dilution with manufacturer's recommended volume of foaming agent.



## WHEN TO APPLY

- When pests are seen or found
- Re-apply every 7 to 10-days if needed,

## APPLICATION FOR INDOOR PESTS

### GENERAL HOUSEHOLD PESTS Cockroaches, Crickets, Silverfish, Spiders, and other listed pests

Use a coarse, low-pressure spray.

- Treat entry points (around water pipes, doors, windows, and eaves.) Treat areas where pests normally feed or hide such as baseboards, corners, around water pipes, under refrigerators, cabinets, sinks, and stoves, being sure to spray cracks & crevices. Spot treat floor beneath furniture, in closets, and storage areas, but **DO NOT** apply to entire floor area.

### ANTS (excluding harvester, fire and pharaoh ants)

- Apply to ant trails on walls, tile, baseboards, around pipes, under cabinets, and other places where ants are active.
- Treat entry points such as windows and doors and the outdoor perimeter.

### PANTRY AND STORED PRODUCT PESTS

Make applications to cupboards, shelving and storage areas. Remove all foodstuffs, all utensils, and other objects before spraying. Allow all treated surfaces to dry before replacing foodstuffs, utensils or other items. Any foodstuff accidentally contaminated with any spray solution must be discarded.

### COMMERCIAL STORED PRODUCT PESTS

Apply finished spray to equipment, wall and floor surfaces of grain bins, warehouses, production facilities, storage areas, rail cars, truck beds, and areas where products are stored, at the rate of 1 gal per 1000 sq ft prior to storing or handling grain. Only make applications after equipment bins and buildings have been thoroughly cleaned.

Apply product as a perimeter treatment where pests are active and may find entrance. Treat a band of soil or lawn up to 7 feet wide around and adjacent to structures and treat the foundation to a height of 2 feet. Apply as a coarse spray at a rate of 1 gal per 1000 sq ft. Thoroughly and uniformly wet the barrier area but **DO NOT** allow run-off to occur.

### PESTS IN AIRCRAFT

**DO NOT** use in aircraft cabins. May be applied to carpet or upholstery in the cargo area only.

### PESTS IN LIVESTOCK HOUSING STRUCTURES

#### Horse Stables, Dairy Barns, Hog Farms, Poultry Houses, & Pet Kennels

Apply as a general surface, spot, and/or crack and crevice spray. **DO NOT** apply indoors where animals other than cattle or horses are present.

Allow spray to dry before allowing re-entry of animals into treated areas. **DO NOT** apply to animal feed or watering equipment. **DO NOT** treat pets with this product.

### FLYING INSECTS

Apply to surfaces where pests collect or rest.

### FOOD/FEED HANDLING ESTABLISHMENTS

For control of all labeled pests, applications are permitted in food/feed and non-food/non-feed areas of food/feed handling and processing establishments as a general surface, spot, void, or crack and crevice treatment.

Food/Feed handling establishments are defined as places other than private residences in which exposed food/feed is held, processed, prepared, or served. Included also are areas for receiving, storing, packing (canning,

bottling, wrapping, boxing), preparing, edible waste storage and enclosed processing systems (mills, dairies, edible oils, syrups) of food/feed. Serving areas where food/feed is exposed and the facility is in operation are also considered food/feed areas.

**Non-Food/Non-Feed Areas:** Examples of non-food/non-feed areas: garbage rooms, lavatories, floor drains (to sewers), entries and vestibules, offices, locker rooms, machine rooms, boiler rooms, mop closets and storage (after packaging, canning or bottling). All areas that insects inhabit or through which insects may enter should be treated.

General Surface Applications: **DO NOT** apply directly to food/feed products. Cover or remove all food/feed processing and/or handling equipment during application. Spot or crack and crevice Applications: Except in federally inspected meat and poultry plants, spot or crack and crevice applications may be made while the facility is in operation provided exposed food is covered or removed from area being treated prior to application. **DO NOT** apply directly to food or food-handling surfaces.

## **OUTDOOR/PERIMETER PESTS**

Use this product to kill listed outdoor pests by application as a perimeter treatment or broadcast application to exterior surfaces of buildings, lawns, grounds, and ornamental plantings.

### **WHERE TO APPLY**

- Apply to surfaces on buildings, porches and patios (spot or crack-and crevice treatment only), around doors and windows, eaves and attic vents, utility entry points, soffit areas, and other exterior openings (foundation cracks or drilled holes) where these pests enter the structure or where they have been seen or found, or can find shelter.
- Treat the outside of the structure, to include walls (to a height of 2 feet), around doors, windows, and soffits where pests are active or may enter or hide. Treat the soil, turf, or other non-flowering ground covering adjacent to the structure (in a band up to 7 feet wide) and wherever pests are seen, have been found, or can find shelter.

### **USE RATE**

- 8 to 16 ml (0.27 to 0.54 fl oz) per 1,000 sq ft - See Table 1 for mixing directions.
- Use higher labeled rate for severe infestations.

### **HOW TO APPLY (Also see APPLICATIONS FOR OUTDOOR/ PERIMETER PESTS)**

- Perimeter Treatment: Treat area adjacent buildings in a band up to 7 feet wide. Also treat the building foundation to a height of 2 feet in areas where pests are active or can find entrance.
- Apply just enough dilution to adequately cover the area without excessive dripping or runoff. Volume can vary depending on the surface type treated. For example, mulch requires more spray than bare soil. If mulch is heavy, rake it back to expose soil before treating.
- Avoid contact with treated surfaces until dry.

### **WHEN TO APPLY**

- When pests are seen or found
- Re-apply every 7 to 10 days if needed.

### **MIXING INFORMATION**

- Add product when filling spray tank with water; shake or agitate mixture.
- Diluted spray mixture can be stored overnight. Agitate before using.

Application Volume: gals/ 1,000 sq ft	Use Rate: Milliliters/ 1,000 sq ft	Milliliters of this product Diluted to These Volumes of Finished Spray			
		3 gals	10 gals	15 gals	25 gals
2	8	12	40	60	100
	16	24	80	120	200
5	8	--	16	24	40
	16	--	32	48	80
10	8	--	8	12	20
	16	--	16	24	40

$\frac{11.8 \times (\text{Milliliters of this product})}{(\text{gals of finished spray}) \times 3,785} = \text{Percent Concentration}$
--

### **APPLICATION FOR OUTDOOR/PERIMETER PESTS**

**ANTS (excluding harvester, pharaoh, and carpenter)**

Treat ant trails around windows and doors, along sidewalks, or other areas where seen. Apply a perimeter treatment as described above.

**OCCASIONAL INVADERS (listed pests including multi-colored Asian lady beetle, boxelder bug, brown marmorated stink bug[\*], and elm leaf beetle)**

Apply directly to insects that have congregated around doors and windows and similar areas where they may enter structures. Apply perimeter treatment as described above.

Treat trees and shrubs infested with boxelder bugs, elm leaf beetles, and other occasional invading species early in the season.

[\*Not for Use in California]

**TICKS (including ticks that may transmit Lyme Disease, Rocky Mountain Spotted Fever)**

Apply as a direct spray to the pest or as a coarse wet spray to areas of soil where ticks are most likely to be found (along paths or trails, under plants, and moist areas.) Treat soil in the area where these pests could be present.

**FILTH FLIES**

Use Rate: 0.025% to 0.05% concentration

Apply low-volume mist or spray to outside surfaces of buildings, garages, fences, and other areas where flies rest.

Apply to porches and patios as a spot or crack-and-crevice treatment.

**MOSQUITOES (including mosquitoes that may transmit Zika, Dengue, Chikungunya, and West Nile virus)**

Apply at the rate of one gal of dilution per 1,000 sq ft as a general spray around buildings to control adult mosquitoes.

For higher volume applications, this product may be diluted at lower concentrations and applied in greater volumes of water to deliver the desired amount of product per area (refer to Table 1: Mixing Directions for Outdoor/Perimeter Applications).

Spray around landscape plants and ground cover, under decks, around building foundations and other places where mosquitoes may rest.

## **TURF PESTS**

This product controls listed pests on landscape and recreational turf. Not for use on turf being grown for sale or other commercial use as sod, or for commercial seed production, or for research purposes. Not for use on golf course turf. For ornamental/recreational turf applications, **DO NOT** apply when the average wind speed is greater than 15 mph.

## **USE RATE**

Apply 4 to 8 ml (0.135 to 0.270 fl oz) per 1,000 sq ft or 6 to 12 fl oz per acre. Use higher labeled rate for severe infestations and longest residual. Residual control for listed outdoor pests lasts up to 30 days.

## **WHERE TO APPLY**

Apply where listed pests have been seen or found, or can find shelter (home lawns, business complexes, apartment buildings, airports, cemeteries, parks, playgrounds, recreational fields, institutional grounds, athletic fields, and other landscape turf grass).

## **HOW TO APPLY**

Use an accurately calibrated sprayer. Apply uniformly using spray nozzles with a coarse droplet size such as flood jet nozzles. Keep children and pets off treated areas until lawn has dried.

## **WHEN TO APPLY**

Apply when pests first appear. Re-apply as needed based on pest reinfestation. **DO NOT** treat more than 6 times per year. Consult your State Cooperative Extension Office for the specific timing in your area.

## **MIXING INFORMATION**

- Add product when filling spray tank with water; shake or agitate mixture.
- Diluted spray mixture can be stored overnight. Agitate before using.

## **APPLICATION FOR TURF PESTS**

### **ARMYWORMS, CUTWORMS, SOD WEBWORMS**

**DO NOT** water or mow for at least 24 hours following application.

### **BILLBUGS**

Apply when adults first appear in the spring. In temperate climates, this application will also control overwintering chinch bugs.

### **CHINCH BUGS**

For best results, water the turf immediately after application to aid in the penetration of the active ingredient into the thatch layer where chinch bugs dwell.

### **ORNAMENTAL PESTS**

This product controls listed pests on trees, shrubs, foliage plants and flowers in outdoor landscaped areas and interior plantscapes where these plants are grown. For ornamental/recreational turf applications, **DO NOT** apply when the wind speed is greater than 15 mph.

## **WHERE TO APPLY**

Use in landscapes and interiorscapes (parks, recreational areas, athletic fields, institutional grounds, hotels, malls, office buildings, and airports). Not for use on plants or turf grown for research, commercial seed production, sale, or other commercial use. Not for use in greenhouses or nurseries.

Apply where listed pests are seen, have been found, or can find shelter among trees, shrubs, evergreens, ground covers, flowers, and foliage plants.

No phytotoxicity has been observed on a wide range of ornamentals tested under various environmental conditions. If in doubt, first try this product on a small sample.

**USE RATE**

- 45 to 160 ml (1.5 to 5.4 oz) of this product per 100 gals of water
- Use higher labeled rate for severe infestations.

**HOW TO APPLY (Also see APPLICATION FOR ORNAMENTAL PESTS)**

Apply as a dilute spray just to the point of run-off but **DO NOT** allow excess run-off. For hard-to-wet foliage such as holly, pine, or ivy, consider adding a spreader-sticker. For best results, spray thoroughly for good coverage on the underside of leaves for pests that feed or rest there.

- Spray plants in bloom at times when pollinating insects are not present, such as early morning or late evening.
- Remove any animal feeding dishes prior to treatment.
- Avoid contact with treated surfaces until dry.

**WHEN TO APPLY**

- Apply when pests first appear. Re-apply as needed based on pest infestation.
- Consult your State Cooperative Extension Office for the specific timing in your area.

**MIXING INFORMATION**

- Add product when filling spray tank with water; shake or agitate mixture.
- Diluted spray mixture can be stored overnight. Agitate before using.

**APPLICATION FOR ORNAMENTAL PESTS**

**BAGWORMS**

Spray when bagworms first begin to hatch. If possible, apply directly to the larvae. Young larvae are easier to control.

**BLACK VINE WEEVIL (adult)**

Use rate: 60 to 160 ml (2 to 5.4 fl oz) per 100 gals

Apply as needed when adults and damage are first noticed in spring and at 3 to 4 week intervals while weevils and notching are observed. Addition of a spreader/sticker at recommended rates may enhance control of insects on certain species of ornamentals having difficult to wet foliage.

**SCALE (CRAWLERS)**

Spray thoroughly on foliage, trunk, limbs, and twigs.

## STORAGE AND DISPOSAL

**DO NOT** contaminate water, food or feed by storage or disposal.

**PESTICIDE STORAGE:** Store in a tightly closed container in a cool, dry place. Store in original container and out of reach of children, preferably in a locked storage area.

**PESTICIDE DISPOSAL:** Pesticide spray mixture or rinsate that cannot be used should be disposed of in a landfill approved for pesticides. Improper disposal of excess pesticide spray mixture or rinsate is a violation of Federal law. If these wastes cannot be disposed of by the use according to label instructions, contact your State Pesticide or Environmental Control Agency or the Hazardous Waste representative at the nearest EPA Regional Office for guidance. Do not pour or dispose down-the-drain or sewer. Call your local solid waste agency for local disposal options.

### CONTAINER HANDLING:

**[For containers ≤ 5 gallons: Nonrefillable Container: DO NOT** reuse or refill this container. Triple rinse container (or equivalent) promptly after emptying. Triple Rinse as follows: Empty the remaining contents into application equipment or a mix tank and drain for 10 seconds after the flow begins to drip. Fill the container ¼ full with water and recap. Shake for 10 seconds. Pour rinsate into application equipment or a mix tank or store rinsate for later use or disposal. Drain for 10 seconds after the flow begins to drip. Repeat this procedure two more times. Then offer for recycling if available or puncture and dispose of in a sanitary landfill, or by other procedures allowed by state and local authorities.]

**[For containers > 5 gallons: Nonrefillable container: DO NOT** reuse or refill this container. Triple rinse container (or equivalent) promptly after emptying. Triple Rinse as follows: Empty the remaining contents into application equipment or a mix tank. Fill the container ¼ full with water. Recap and tighten closures. Tip container on its side and roll it back and forth, ensuring at least one complete revolution, for 30 seconds. Stand the container on its end and tip it back and forth several times. Turn the container over onto its other end and tip it back and forth several times. Empty the rinsate into application equipment or a mix tank or store rinsate for later use or disposal. Repeat this procedure two more times. Then offer for recycling if available or puncture and dispose of in a sanitary landfill, or by other procedures allowed by state and local authorities.]

## LIMITATION OF WARRANTY AND LIABILITY

**IMPORTANT: READ BEFORE USE.** Read the entire Directions for Use, Conditions of Warranties and Limitations of Liability before using this product. If these terms and conditions are not acceptable, return the unopened product container at once. By using this product, user or buyer accepts the following Disclaimer of Warranties and Limitations of Liability. **CONDITIONS:** The directions for use of this product are believed to be adequate and must be followed carefully. However, it is impossible to eliminate all risks associated with the use of this product. Ineffectiveness, injury, and other unintended consequences may result because of such factors as manner of use or application (including misuse), the presence of other materials, weather conditions, and other unknown factors, all of which are beyond the control of ATTICUS, LLC. To the extent consistent with applicable law, all such risks shall be assumed by the user or buyer.

**DISCLAIMER OF WARRANTIES:** To the extent consistent with applicable law, ATTICUS, LLC makes no other warranties, express or implied, of merchantability or of fitness for a particular purpose or otherwise, that extend beyond statements on this label. **LIMITATIONS OF LIABILITY:** To the extent consistent with applicable law, neither ATTICUS, LLC the manufacturer, nor the Seller shall be liable for any indirect, special, incidental or consequential damages resulting from the use, handling, application, storage, or disposal of this product. To the extent consistent with applicable law, the exclusive remedy of the user or buyer for any and all losses, injuries or damages resulting from the use, handling, application, or storage of this product, whether in contract, warranty, tort, negligence, strict liability or otherwise, shall not exceed the purchase price paid.

[A177.05] is a trademark of Atticus, LLC

[Tempo®] is a registered trademark of Bayer.

**{LANGUAGE ON LABEL AFFIXED TO CONTAINER}**

BETA-CYFLUTHRIN	GROUP	3A	INSECTICIDE
-----------------	-------	----	-------------

**A177.05<sup>[TM]</sup>**

[Alternate Brand Name: *Cyprus Ultra SC Premise Spray, Cyprus Ultra SC Concentrate, Tirade Ultra SC*]

[Contains Beta-cyfluthrin, the active ingredient used in Tempo® SC [Ultra] [Ultra Premise Spray] [Ultra Pest Control Concentrate]].

[Spider, Ant, Mosquito, Grain Beetle, Weevils, Indian meal moth, and/or Cockroach Images on page 14]

[For both Indoor and Outdoor Use.]

<b>ACTIVE INGREDIENT:</b>	(% by weight)
Beta-Cyfluthrin, Cyano(4-fluoro-3-phenocyclophenyl)methyl 3-(2,2-dichloroethyl)-2,2-dimethyl-cyclopropanecarboxylate.....	11.8%
<b>OTHER INGREDIENTS:</b> .....	88.2%
<b>TOTAL</b> .....	100.0%

Contains 1 lb of Beta-Cyfluthrin per gallon.

**KEEP OUT OF REACH OF CHILDREN**

**CAUTION**

Si usted no entiende la etiqueta, busque a alguien para que se la explique a usted en detalle. (If you **DO NOT** understand the label, find someone to explain it to you in detail.)

FIRST AID	
<b>If swallowed:</b>	<ul style="list-style-type: none"> <li>Call a poison control center or doctor immediately for treatment advice.</li> <li>Have person sip a glass of water if able to swallow.</li> <li><b>DO NOT</b> induce vomiting unless told to do so by the poison control center or doctor.</li> </ul>
<b>If on skin or clothing:</b>	<ul style="list-style-type: none"> <li>Take off contaminated clothing.</li> <li>Rinse skin immediately with plenty of water for 15-20 minutes.</li> <li>Call a poison control center or doctor for treatment advice.</li> </ul>
<b>If in eyes:</b>	<ul style="list-style-type: none"> <li>Hold eye open and rinse slowly and gently with water for 15-20 minutes.</li> <li>Remove contact lenses, if present, after the first 5 minutes, then continue rinsing eye.</li> <li>Call a poison control center or doctor for treatment advice.</li> </ul>
<b>If inhaled:</b>	<ul style="list-style-type: none"> <li>Move person to fresh air.</li> <li>If person is not breathing, call 911 or an ambulance, then give artificial respiration, preferably mouth-to-mouth, if possible.</li> <li>Call a poison control center or doctor for further treatment advice.</li> </ul>

**HOT LINE NUMBER**

Have the product container or label with you when calling a poison control center or doctor, or going for treatment. You may also contact SafetyCall at **1-844-685-9173** for emergency medical treatment information.

**Note to Physician:** No specific antidote is available. Treat the patient symptomatically.

**For Chemical Emergency:**

**Spill, Leak, Fire, Exposure, or Accident, Call CHEMTREC Day or Night Within USA and Canada: 1-800-424-9300 or +1 703-527-3887 (collect calls accepted)**

**PRECAUTIONARY STATEMENTS  
HAZARDS TO HUMANS AND DOMESTIC ANIMALS  
CAUTION**

Harmful if swallowed, inhaled or absorbed through skin. Causes moderate eye irritation. Avoid contact with eyes, skin, or clothing. Avoid breathing spray mist. Wash thoroughly with soap and water after handling and before eating, drinking, chewing gum, using the toilet, or using tobacco. Remove contaminated clothing and wash before reuse. **ENVIRONMENTAL HAZARDS:** This pesticide is extremely toxic to fish and aquatic invertebrates. Remove from premises or tightly cover

fish tanks and disconnect aerators when applying indoors where such containers are present. To protect the environment, **DO NOT** allow pesticide to enter or run off into storm drains, drainage ditches, gutters or surface waters. **DO NOT** apply directly to water, to areas where surface water is present or to intertidal areas below the mean high water mark Applying this product in calm weather when rain is not predicted for the next 24 hours will help to ensure that wind or rain does not blow or wash pesticide off the treatment area. Rinsing application equipment over the treated area will help avoid run off to water bodies or drainage systems. **DO NOT** apply when weather conditions favor drift from treated areas. Drift and runoff from treated areas may be hazardous to aquatic organisms in neighboring areas. **DO NOT** contaminate water when cleaning equipment or when disposing of equipment wash waters. Apply this product only as specified on this label. This pesticide is highly toxic to bees exposed to direct treatment or residues on crops or weeds. **DO NOT** apply **A177.05** or allow it to drift onto crops or weeds on which bees are actively foraging. Additional information may be obtained by consulting your Cooperative Extension Service. **PHYSICAL & CHEMICAL HAZARDS DO NOT** use water-based sprays of this product in conduits, motor housings, junction boxes, switch boxes, or other electrical equipment because of possible shock hazard. Do not mix or allow to come in contact with any oxidizing agent. Hazardous chemical reaction may occur.

**STORAGE AND DISPOSAL**

**DO NOT** contaminate water, food or feed by storage or disposal.  
**PESTICIDE STORAGE:** Store in a tightly closed container in a cool, dry place. Store in original container and out of reach of children, preferably in a locked storage area.  
**PESTICIDE DISPOSAL:** Pesticide spray mixture or rinsate that cannot be used should be disposed of in a landfill approved for pesticides. Improper disposal of excess pesticide spray mixture or rinsate is a violation of Federal law. If these wastes cannot be disposed of by the use according to label instructions, contact your State Pesticide or Environmental Control Agency or the Hazardous Waste representative at the nearest EPA Regional Office for guidance. Do not pour or dispose down-the-drain or sewer. Call your local solid waste agency for local disposal options.

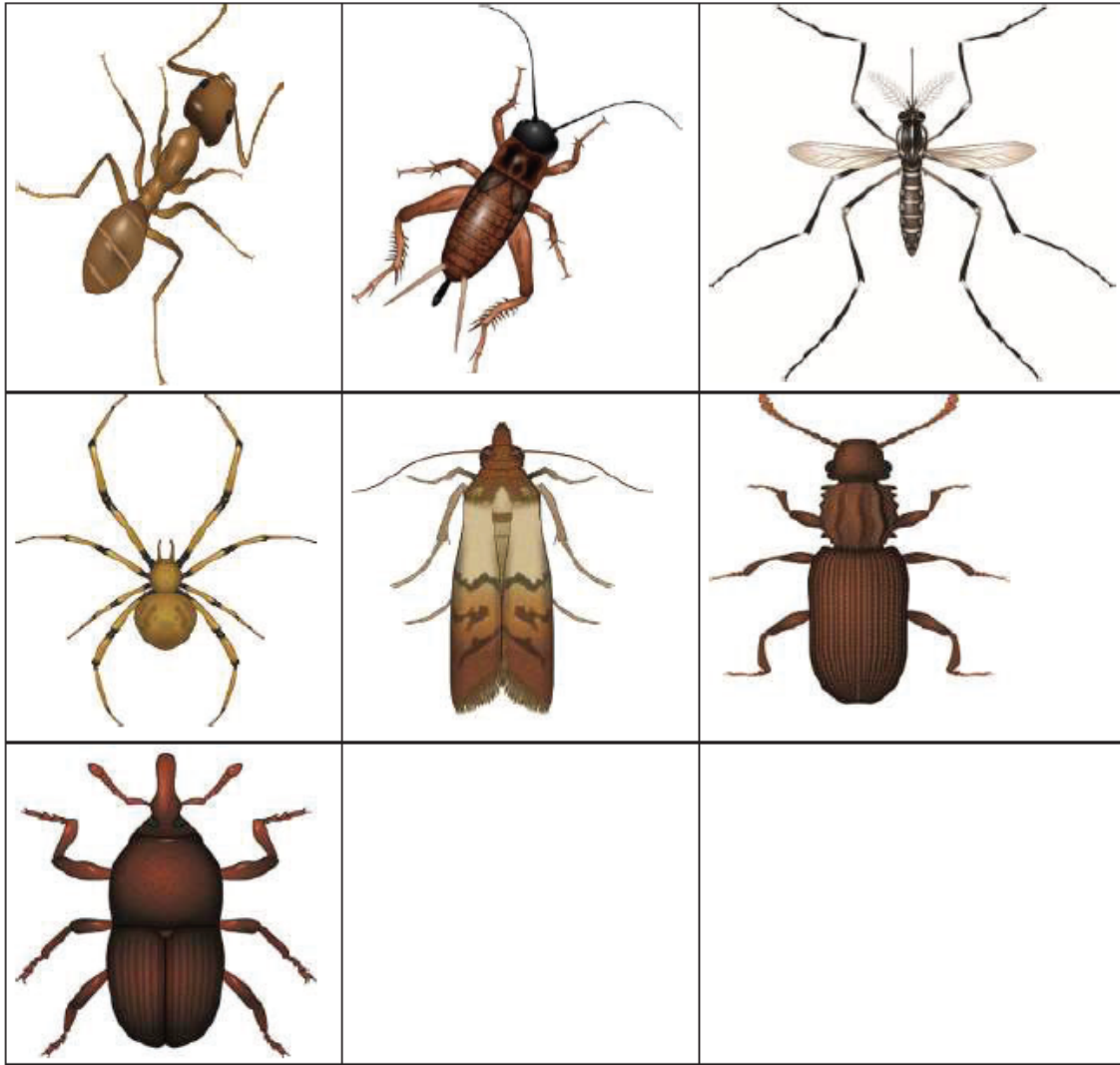
**CONTAINER HANDLING:**  
**[For containers ≤ 5 gallons: Nonrefillable Container: DO NOT** reuse or refill this container. Triple rinse container (or equivalent) promptly after emptying. Triple Rinse as follows: Empty the remaining contents into application equipment or a mix tank and drain for 10 seconds after the flow begins to drip. Fill the container ¼ full with water and recap. Shake for 10 seconds. Pour rinsate into application equipment or a mix tank or store rinsate for later use or disposal. Drain for 10 seconds after the flow begins to drip. Repeat this procedure two more times. Then offer for recycling if available or puncture and dispose of in a sanitary landfill, or by other procedures allowed by state and local authorities.]  
**[For containers > 5 gallons: Nonrefillable container: DO NOT** reuse or refill this container. Triple rinse container (or equivalent) promptly after emptying. Triple Rinse as follows: Empty the remaining contents into application equipment or a mix tank. Fill the container ¼ full with water. Recap and tighten closures. Tip container on its side and roll it back and forth, ensuring at least one complete revolution, for 30 seconds. Stand the container on its end and tip it back and forth several times. Turn the container over onto its other end and tip it back and forth several times. Empty the rinsate into application equipment or a mix tank or store rinsate for later use or disposal. Repeat this procedure two more times. Then offer for recycling if available or puncture and dispose of in a sanitary landfill, or by other procedures allowed by state and local authorities.]

See inside label booklet for additional Precautionary Statements and Directions for Use.

**[A177.05** is not manufactured, or distributed by [Bayer] [Elanco], seller of [Tempo® SC Ultra] [Tempo® SC Ultra Premise Spray] [Tempo® SC Ultra Pest Control Concentrate].] *{Note to reviewer: The statement for use and disclaimer will appear on the base label, if used on the final product packaging, in close proximity to each other and in text which does not excessively stand out over the rest of the labeling text or draw greater attention than other required precautionary labeling.}*

Manufactured for:  
**Atticus, LLC**  
 940 NW Cary Parkway, Suite 200  
 Cary, NC 27513

**EPA Reg. No.:** 91234-XX  
**EPA Est. No.:** \_\_\_\_\_  
**NET CONTENTS:** \_\_\_\_\_





{Note to reviewer: [Text] in brackets denotes optional or explanatory language}  
{Note to reviewer: {Text} in braces denotes where in the final label text will appear}

**{Front Panel for Blister Card – Sublabel B}**

*{Note to reviewer: the following content labelled “Front Panel for Blister Card” shows the text which will appear on front of the outer packaging of the final product. The blister card will be accompanied by the complete labeling for sublabel B, which starts on page 18, at the time of sale. The following does not represent a stand-alone product or sub-label.}*

**BETA-CYFLUTHRIN    GROUP 3A    INSECTICIDE**

**A177.05 [™]**

*[Alternate Brand Name: Cyprus Ultra SC Premise Spray, Cyprus Ultra SC Concentrate, Tirade Ultra SC]*

[Contains Beta-cyfluthrin, the active ingredient used in Tempo® SC [Ultra] [Ultra Premise Spray] [Ultra Pest Control Concentrate].]

[This product kills listed crawling, flying, and wood-infesting insects and protects barns, horse stables, and other animal quarters from invading pests. Just mix and spray to provide [(effective) knockdown] control.]

**[For Both Indoor and Outdoor Use]**

[Selected optional claims bulleted here from page 13 and/or page 14.]

- 
- 
- 
- 
- 
- 

<b>ACTIVE INGREDIENT:</b>	<b>(% by weight)</b>
Beta-Cyfluthrin [CAS No. 68359-37-5].....	11.8%
<b>OTHER INGREDIENTS:</b> .....	<u>88.2%</u>
<b>TOTAL</b> .....	100.0%

Contains 1 lb of Beta-Cyfluthrin per gallon.

**KEEP OUT OF REACH OF CHILDREN**

**CAUTION**

**Si usted no entiende la etiqueta, busque a alguien para que se la explique a usted en detalle. (If you DO NOT understand the label, find someone to explain it to you in detail.)**

See [below] [inside label booklet] for [additional] [First Aid,] [and] [Precautionary Statements] [and] [Directions for Use].

[A177.05 is not manufactured, or distributed by [Bayer] [Elanco], seller of [Tempo® SC Ultra] [Tempo® SC Ultra Premise Spray] [Tempo® SC Ultra Pest Control Concentrate].]

*{Note to reviewer: The statement for use and disclaimer will appear on the blister card, if used on the final product packaging, in close proximity to each other and in text which does not excessively stand out over the rest of the labeling text or draw greater attention than other required precautionary labeling.}*

**EPA Reg. No.: 91234-XX**

**EPA Est. No.:**

**Net Contents:**

Manufactured for:  
**Atticus, LLC**  
940 NW Cary Parkway, Suite 200  
Cary, NC 27513

{Note to reviewer: [Text] in brackets denotes optional or explanatory language}

{Note to reviewer: {Text} in braces denotes where in the final label text will appear}

**{Back Panel for Blister Card – Sublabel B}**

*{Note to reviewer: the following content labelled “Back Panel for Blister Card” shows the text which will appear on the back of the outer packaging for the final product. The blister card will be accompanied by the complete labeling for sublabel B, which starts on page 18, at the time of sale. The following does not represent its own product or sub-label.}*

<b>A177.05</b>	
[Selected optional claims bulleted here from page 13 and/or page 14.]	
<ul style="list-style-type: none"> <li>•</li> <li>•</li> <li>•</li> <li>•</li> <li>•</li> <li>•</li> <li>•</li> <li>•</li> </ul>	
<b>Kills</b>	Ants, Fleas, Flies, Ticks, Spiders, and 78 other listed pests
<b>Where to Use</b>	Indoors as a spot, crack, or crevice treatment or outdoors as perimeter treatment in and around barns, horse stables, and other listed animal quarters
<b>Use For</b>	controlling and preventing insect infestations
<b>How Much to Use</b>	Dilute contents of container (32 ml) in two gallons of water
<b>Re-apply</b>	Re-apply in 7-10 days as needed

**PRECAUTIONARY STATEMENTS**

**HAZARDS TO HUMANS AND DOMESTIC ANIMALS**

**CAUTION:** Harmful if swallowed, inhaled or absorbed through skin. Causes moderate eye irritation. Avoid contact with eyes, skin or clothing. A void breathing spray mist. Wash thoroughly with soap and water after handling and before eating, drinking, chewing gum, using the toilet, or using tobacco. Remove contaminated clothing and wash before reuse.

<b>FIRST AID</b>	
<b>If swallowed:</b>	<ul style="list-style-type: none"> <li>• Call a poison control center or doctor immediately for treatment advice.</li> <li>• Have person sip a glass of water if able to swallow.</li> <li>• <b>DO NOT</b> induce vomiting unless told to do so by the poison control center or doctor.</li> <li>• <b>DO NOT</b> give anything by mouth to an unconscious person.</li> </ul>
<b>If on skin or clothing:</b>	<ul style="list-style-type: none"> <li>• Take off contaminated clothing.</li> <li>• Rinse skin immediately with plenty of water for 15-20 minutes.</li> <li>• Call a poison control center or doctor for treatment advice.</li> </ul>
<b>If in eyes:</b>	<ul style="list-style-type: none"> <li>• Hold eye open and rinse slowly and gently with water for 15-20 minutes.</li> <li>• Remove contact lenses, if present, after the first 5 minutes, then continue rinsing eye.</li> <li>• Call a poison control center or doctor for treatment advice.</li> </ul>

<b>If inhaled:</b>	<ul style="list-style-type: none"> <li>• Move person to fresh air.</li> <li>• If person is not breathing, call 911 or an ambulance, then give artificial respiration, preferably mouth-to-mouth, if possible.</li> <li>• Call a poison control center or doctor for further treatment advice.</li> </ul>
<b>HOT LINE NUMBER</b>	
<p>Have the product container or label with you when calling a poison control center or doctor, or going for treatment. You may also contact SafetyCall at <b>1-844-685-9173</b> for emergency medical treatment information.</p>	
<p><b>Note to Physician:</b> No specific antidote is available. Treat the patient symptomatically.</p>	

### ENVIRONMENTAL HAZARDS

This pesticide is extremely toxic to fish and aquatic invertebrates. Remove from premises or tightly cover fish tanks and disconnect aerators when applying indoors where such containers are present. To protect the environment, **DO NOT** allow pesticide to enter or run off into storm drains, drainage ditches, gutters or surface waters. **DO NOT** apply directly to water, to areas where surface water is present or to intertidal areas below the mean high water mark. Applying this product in calm weather when rain is not predicted for the next 24 hours will help to ensure that wind or rain does not blow or wash pesticide off the treatment area. Rinsing application equipment over the treated area will help avoid run off to water bodies or drainage systems.

**DO NOT** apply when weather conditions favor drift from treated areas. Drift and runoff from treated areas may be hazardous to aquatic organisms in neighboring areas. **DO NOT** contaminate water when cleaning equipment or when disposing of equipment wash waters. Apply this product only as specified on this label.

This pesticide is highly toxic to bees exposed to direct treatment or residues on crops or weeds. **DO NOT** apply **A177.05** or allow it to drift onto crops or weeds on which bees are actively foraging. Additional information may be obtained by consulting your Cooperative Extension Service.

### PHYSICAL & CHEMICAL HAZARDS

**DO NOT** use water-based sprays of this product in conduits, motor housings, junction boxes, switch boxes, or other electrical equipment because of possible shock hazard. Do not mix or allow to come in contact with any oxidizing agent. Hazardous chemical reaction may occur.

**EPA Reg. No.: 91234-XX**

**EPA Est. No.:**

**Net Contents:**

Manufactured for:  
**Atticus, LLC**  
 940 NW Cary Parkway, Suite 200  
 Cary, NC 27513

{Note to reviewer: [Text] in brackets denotes optional or explanatory language}  
{Note to reviewer: {Text} in braces denotes where in the final label text will appear}

**{BOOKLET FRONT PANEL LANGUAGE}**

Sublabel B

**BETA-CYFLUTHRIN | GROUP 3A | INSECTICIDE**

# A177.05 [™]

[Alternate Brand Name: Cyprus Ultra SC Premise Spray, Cyprus Ultra SC Concentrate, Tirade Ultra SC]

[Contains Beta-cyfluthrin, the active ingredient used in Tempo® SC [Ultra] [Ultra Premise Spray] [Ultra Pest Control Concentrate].]

**[This product kills listed crawling, flying, and wood-infesting insects and protects barns, horse stables, and other animal quarters from invading pests. Just mix and spray to provide [(effective) knockdown] control.]**

**[For both Indoor and Outdoor Use.]**

[Selected optional claims bulleted here from page 13 and/or page 14.]

- 
- 
- 
- 
- 
- 
- 

ACTIVE INGREDIENT:	(% by weight)
Beta-Cyfluthrin [CAS No. 68359-37-5].....	11.8%
<b>OTHER INGREDIENTS:</b> .....	<b>88.2%</b>
<b>TOTAL</b> .....	<b>100.0%</b>

Contains 1 lb of Beta-Cyfluthrin per gallon.

**KEEP OUT OF REACH OF CHILDREN**

## CAUTION

**Si usted no entiende la etiqueta, busque a alguien para que se la explique a usted en detalle. (If you DO NOT understand the label, find someone to explain it to you in detail.)**

See [below] [inside label booklet] for [additional] [First Aid,] [and] [Precautionary Statements] [and] [Directions for Use].

[A177.05 is not manufactured, or distributed by [Bayer] [Elanco], seller of [Tempo® SC Ultra] [Tempo® SC Ultra Premise Sprav] [Tempo® SC Ultra Pest Control Concentrate].]

*{Note to reviewer: The statement for use and disclaimer will appear on the front panel, if used on the final product packaging, in close proximity to each other and in text which does not excessively stand out over the rest of the labeling text or draw greater attention than other required precautionary labeling.}*

**EPA Reg. No.: 91234-XX**

**EPA Est. No.:**

**Net Contents:**

Manufactured for:

**Atticus, LLC**

940 NW Cary Parkway, Suite 200

Cary, NC 27513

## {LANGUAGE INSIDE BOOKLET}

<b>FIRST AID</b>	
<b>If swallowed:</b>	<ul style="list-style-type: none"><li>• Call a poison control center or doctor immediately for treatment advice.</li><li>• Have person sip a glass of water if able to swallow.</li><li>• <b>DO NOT</b> induce vomiting unless told to do so by the poison control center or doctor.</li><li>• <b>DO NOT</b> give anything by mouth to an unconscious person.</li></ul>
<b>If on skin or clothing:</b>	<ul style="list-style-type: none"><li>• Take off contaminated clothing.</li><li>• Rinse skin immediately with plenty of water for 15-20 minutes.</li><li>• Call a poison control center or doctor for treatment advice.</li></ul>
<b>If in eyes:</b>	<ul style="list-style-type: none"><li>• Hold eye open and rinse slowly and gently with water for 15-20 minutes.</li><li>• Remove contact lenses, if present, after the first 5 minutes, then continue rinsing eye.</li><li>• Call a poison control center or doctor for treatment advice.</li></ul>
<b>If inhaled:</b>	<ul style="list-style-type: none"><li>• Move person to fresh air.</li><li>• If person is not breathing, call 911 or an ambulance, then give artificial respiration, preferably mouth-to-mouth, if possible.</li><li>• Call a poison control center or doctor for further treatment advice.</li></ul>
<b>HOT LINE NUMBER</b>	
Have the product container or label with you when calling a poison control center or doctor, or going for treatment. You may also contact SafetyCall at <b>1-844-685-9173</b> for emergency medical treatment information.	
<b>Note to Physician:</b> No specific antidote is available. Treat the patient symptomatically.	

**For Chemical Emergency:  
Spill, Leak, Fire, Exposure, or Accident,  
Call CHEMTREC Day or Night  
Within USA and Canada: 1-800-424-9300 or +1 703-527-3887 (collect calls accepted)**

## **PRECAUTIONARY STATEMENTS HAZARDS TO HUMANS AND DOMESTIC ANIMALS**

**CAUTION:** Harmful if swallowed, inhaled or absorbed through skin. Causes moderate eye irritation. Avoid contact with eyes, skin or clothing. Avoid breathing spray mist. Wash thoroughly with soap and water after handling and before eating, drinking, chewing gum, using the toilet, or using tobacco. Remove contaminated clothing and wash before reuse.

### **ENVIRONMENTAL HAZARDS**

This pesticide is extremely toxic to fish and aquatic invertebrates. Remove from premises or tightly cover fish tanks and disconnect aerators when applying indoors where such containers are present. To protect the environment, **DO NOT** allow pesticide to enter or run off into storm drains, drainage ditches, gutters or surface waters. **DO NOT** apply directly to water, to areas where surface water is present or to intertidal areas below the mean high water mark. Applying this product in calm weather when rain is not predicted for the next 24 hours will help to ensure that wind or rain does not blow or wash pesticide off the treatment area. Rinsing application equipment over the treated area will help avoid run off to water bodies or drainage systems.

**DO NOT** apply when weather conditions favor drift from treated areas. Drift and runoff from treated areas may be hazardous to aquatic organisms in neighboring areas. **DO NOT** contaminate water when cleaning equipment or when disposing of equipment wash waters. Apply this product only as specified on this label.

This pesticide is highly toxic to bees exposed to direct treatment or residues on crops or weeds. **DO NOT** apply **A177.05** or allow it to drift onto crops or weeds on which bees are actively foraging. Additional information may be obtained by consulting your Cooperative Extension Service.

**PHYSICAL & CHEMICAL HAZARDS**

**DO NOT** use water-based sprays of this product in conduits, motor housings, junction boxes, switch boxes, or other electrical equipment because of possible shock hazard. Do not mix or allow to come in contact with any oxidizing agent. Hazardous chemical reaction may occur.

<b>A177.05</b>	
[Selected optional claims bulleted here from page 13 and/or page 14.]	
<ul style="list-style-type: none"> <li>•</li> <li>•</li> <li>•</li> <li>•</li> <li>•</li> <li>•</li> <li>•</li> <li>•</li> </ul>	
<b>Kills</b>	Ants, Fleas, Flies, Ticks, Spiders, and 78 other listed pests
<b>Where to Use</b>	Indoors as a spot, crack, or crevice treatment or outdoors as perimeter treatment in and around barns, horse stables, and other listed animal quarters
<b>Use For</b>	controlling and preventing insect infestations
<b>How Much to Use</b>	Dilute contents of container (32 ml) in two gallons of water
<b>Re-apply</b>	Re-apply in 7-10 days as needed

**DIRECTIONS FOR USE**

It is a violation of Federal law to use this product in a manner inconsistent with its labeling.

**IMPORTANT:** Read these entire Directions for Use and Limitations of Warranty and Liability before using **A177.05**.

For both indoor and outdoor use.

**GENERAL INFORMATION**

**A177.05** [is a liquid formulation containing 1 lb active ingredient per gallon which] will provide effective knockdown and residual control of the pests listed on this label.

**A177.05** is for use as a general surface, spot, or crack and crevice [spray] [application] in and around buildings and structures and their immediate surroundings (animal runs, animal holding areas, animal quarters, boarding kennels, chicken houses (when birds are not present), dairy barns, feed lots, horse stables, kennels, livestock [pigs, cattle, sheep, goat] barns and holding facilities, storage areas, storage rooms, trailers, turkey houses, utility rooms, and rooms in animal facilities.) Not for use in and around residential areas. **DO NOT** use in commercial food/feed handling establishments, restaurants or other areas where food is commercially prepared, processed or served. **DO NOT** use food utensils such as teaspoon or measuring cup for food purposes after use with insecticides. Cleaning of all areas prior to use of **A177.05** will increase levels of control. Any foodstuffs infested with pests should be removed and destroyed.

## **WATER PROTECTION**

**DO NOT** spray the product into fish pools, ponds, streams, or lakes.

**DO NOT** apply directly to sewers or storm drains, or to any area like a drain or gutter where drainage to sewers, storm drains, water bodies, or aquatic habitat can occur.

**DO NOT** allow the product to enter any drain during or after application.

**DO NOT** apply directly to impervious horizontal surfaces such as sidewalks, driveways, and patios except as a spot or crack-and-crevice treatment.

**DO NOT** apply or irrigate to the point of runoff.

For ornamental/recreational turf applications, **DO NOT** apply when the wind speed is greater than 15 mph.

## **RAIN RELATED STATEMENTS**

**DO NOT** make applications during rain. Avoid making applications when rainfall is expected before the product has sufficient time to dry (minimum 4 hours). Rainfall within 24 hours after application may cause unintended runoff of pesticide application.

## **MIXING INSTRUCTIONS**

Mix **A177.05** with water and apply with pump style sprayer or trigger spray bottle. Add the appropriate amount of product while filling the sprayer with water, and shake to mix. Use [(1 Tablespoon) (16 milliliters)] (0.004 lb. ai) [of **A177.05**] [one half of the bottle's contents] per 1,000 ft<sup>2</sup> in [(sufficient water) (1 gallon of water)] [a 0.05% concentration] to adequately cover the area being treated, but which will not allow dripping or run off to occur. Diluted spray mixture can be stored overnight and applied the following day; however, mixture should be [(agitated) (shaken)] prior to" [(use) (application)] [(to prevent uneven distribution) (to thoroughly mix)] of the [(product) (spray)]. **A177.05** will not stain or damage painted or varnished household surfaces, plastics, fabrics or other surfaces where water applied alone causes no damage.

## **INDOOR PEST CONTROL**

For use in animal housing: livestock barns, horse stables, and other animal quarters to control crawling and flying insect pests. Apply diluted spray as a general surface and/or a crack and crevice spray. Control will be enhanced when facilities are cleaned and interior applications are supplemented with exterior perimeter treatments. **DO NOT** make interior applications of **A177.05** in areas of facility where animals are present. **DO NOT** make applications to animal feedstuffs or watering equipment.

## **GENERAL SURFACE APPLICATIONS**

For listed general pests, occasional invaders, and flying insects apply the diluted spray evenly to walls, floors, between, behind and beneath equipment, appliances, around floordrains, window and door frames, and on the underside of shelves, drawers. Applications may be made to floor surfaces along walls and around air ducts; however **DO NOT** treat the entire area or floor or floor coverings. Pay particular attention to treating entry points and harborage areas. **DO NOT** apply where electrical short circuits could occur. Use a dust or dry bait in these areas. , When making a general surface treatment to overhead areas, wear safety glasses, goggles or face shield and a minimum of a NIOSH-approved particulate filtering facepiece respirator with any N, R or P filter; OR a NIOSH-approved elastomeric particulate respirator with any N, R or P filter; OR a NIOSH-approved powered air purifying respirator with HE filters. For control of flying insects, make application to surfaces or directly where the pest collects or rests. **DO NOT** apply as a ["space spray"] [aerial spray or mist] [fog].

## **SPOT, CRACK OR CREVICE APPLICATIONS**

Use low spray pressure and pin-point application in specific areas: cracks and crevices in or behind baseboards, in floors, walls, expansion joints, areas around water and sewer pipes, wall voids, or voids in table legs and equipment where pests can hide, storage areas, closets, around water pipes, doors and windows, behind and under cabinets, sinks, and other equipment, and the underside of shelves and drawers. **DO NOT** apply where electrical short circuits could occur. Use a dust or dry bait in these areas. Spot treatments must not exceed two square feet in size (for

example, 2 ft. by 1 ft. or 4 ft. by 0.5 ft.). Treat surfaces to ensure thorough coverage but avoid runoff. To treat insects harbored in voids and cracks-and-crevices, applications must be made in such a manner to limit dripping and avoid runoff onto untreated structural surfaces and plants.

**OUTDOOR PEST CONTROL**

**For control of listed flying insects outdoors:** Make applications to outside surfaces of barns, horse stables, animal confinement areas, animal quarters, buildings, feedlots, animal holding areas, storage areas, and workshops, where these pests have been seen or found. Make pin stream applications directly to the nests of wasps, yellow-jackets and hornets.

**For perimeter pest control,** make a general surface application to outside surfaces of barns, horse stables, animal confinement areas, animal quarters, buildings, feedlots, animal holding areas, storage areas, and workshops, where pests have been seen or found. To help prevent infestations of buildings by occasional invaders, treat soil, mulch, turf or other substrates adjacent to buildings, the building foundation, walls, around doors and windows, soffit areas where these pests are active and may find entrance. For ornamental/recreational turf applications, **DO NOT** apply when the wind speed is greater than 15 mph.

For control of the **imported red fire ant** around the sites listed above, mix **A177.05** as directed above and thoroughly drench or inject the entire mound area. Treat all areas of the mound showing activity to provide contact control of the adult fire ants. [**A177.05** will provide contact activity and residual control in the active mound.\*]

[\*Not for Use in California]

**CONTROL OF WOOD INFESTING PESTS**

Make a diluted spray by mixing [(1 Tablespoon) (16 milliliters)] (0.004 lb. ai) of **A177.05** in one gallon of water.

For control of **wood infesting beetles** on structure surfaces, apply diluted spray to thoroughly and evenly cover the area. If spraying overhead, cover all surfaces below the area being sprayed with plastic sheeting or other material which can be disposed of by placing in trash if contamination from dripping occurs. Avoid sprayed surfaces until the treated area is completely dry.

For control of **above ground termites and wood-infesting beetles** in localized areas, apply diluted spray to voids and galleries in damaged wood, and in spaces between wooden structural members and between the sill plate and foundation where wood is vulnerable.

Such applications for termites are not a substitute for mechanical alternation, soil treatment or foundation treatment, but are merely a supplement. For active termite infestations, get a professional inspection.

PESTS CONTROLLED BY A177.05*			
INDOOR PESTS		OUTDOOR PESTS	WOOD INFESTING PESTS
Crawling Pests			
Ants (except Pharaoh)	Earwigs	Ants	Beetles
Bedbugs	Firebrats	Bees	Ambrosia
Beetles (exposed adults & immature stages)	Millipedes	Boxelder bugs	Deathwatch
Cadelle	Pillbugs	Carpenter ants	False powderpost
Cigarette	Silverfish	Cecidflies	Old house borer
Confused Flour	Sowbugs	Centripedes	Powderpost
	Spiders	Cluster flies	Carpenter ants



Dermestid Drugstore Granary weevil Hide Larder Leather Lesser grain borer Lesser meal worm Merchant grain Mealworm Red flour Rice weevil Sawtoothed grain Warehouse Carpet beetles Centipedes Cockroaches American Asian German Oriental Brown-banded Smoky brown Crickets Darkling beetles	<b>Flying Pests</b> Flies Gnats Midges Mosquitoes Moths Clothes Indian meal Mediterranean flour Wasps Yellow jackets	Cockroaches Crickets Elm leaf beetle Fire ants Firebrats Flies Fleas Gnats Ground beetles Hornets Imported red fire ants Midges Millipedes Mosquitos Moths Scorpions Silverfish Spiders Ticks Wasps Yellow jackets	Carpenter bees Termites Subterranean** Formosan Drywood
---	--	--	---

\*For Outdoor and Indoor Pest Control use 1 Tablespoon (16 milliliters) of A177.05 per 1000 square feet in one gallon water.

\*\*Only for control of above-ground, winged forms of subterranean termites

## STORAGE AND DISPOSAL

**DO NOT** contaminate water, food or feed by storage or disposal.

**PESTICIDE STORAGE:** Store in a tightly closed container in a cool, dry place. Store in original container and out of reach of children, preferably in a locked storage area.

**PESTICIDE DISPOSAL:** Pesticide spray mixture or rinsate that cannot be used should be disposed of in a landfill approved for pesticides. Improper disposal of excess pesticide spray mixture or rinsate is a violation of Federal law. If these wastes cannot be disposed of by the use according to label instructions, contact your State Pesticide or Environmental Control Agency or the Hazardous Waste representative at the nearest EPA Regional Office for guidance. Do not pour or dispose down-the-drain or sewer. Call your local solid waste agency for local disposal options.

### CONTAINER HANDLING:

**[For containers ≤ 5 gallons: Nonrefillable Container: DO NOT** reuse or refill this container. Triple rinse container (or equivalent) promptly after emptying. Triple Rinse as follows: Empty the remaining contents into application equipment or a mix tank and drain for 10 seconds after the flow begins to drip. Fill the container ¼ full with water and recap. Shake for 10 seconds. Pour rinsate into application equipment or a mix tank or store rinsate for later use or disposal. Drain for 10 seconds after the flow begins to drip. Repeat this procedure two more times. Then offer for recycling if available or puncture and dispose of in a sanitary landfill, or by other procedures allowed by state and local authorities.]

**[For containers > 5 gallons: Nonrefillable container: DO NOT** reuse or refill this container. Triple rinse container (or equivalent) promptly after emptying. Triple Rinse as follows: Empty the remaining contents into application equipment or a mix tank. Fill the container ¼ full with water. Recap and tighten closures. Tip container on its side and roll it back and forth, ensuring at least one complete revolution, for 30 seconds. Stand the container on its end and tip it back and forth several times. Turn the container over onto its other end and tip it back and forth several times. Empty the rinsate into application equipment or a mix tank or store rinsate for later use or disposal. Repeat this procedure two more times. Then offer for recycling if available or puncture and dispose of in a sanitary landfill, or by other procedures allowed by state and local authorities.]

## LIMITATION OF WARRANTY AND LIABILITY

**IMPORTANT: READ BEFORE USE.** Read the entire Directions for Use, Conditions of Warranties and Limitations of Liability before using this product. If these terms and conditions are not acceptable, return the unopened product container at once. By using this product, user or buyer accepts the following Disclaimer of Warranties and Limitations of Liability. **CONDITIONS:** The directions for use of this product are believed to be adequate and must be followed carefully. However, it is impossible to eliminate all risks associated with the use of this product. Ineffectiveness, injury, and other unintended consequences may result because of such factors as manner of use or application (including misuse), the presence of other materials, weather conditions, and other unknown factors, all of which are beyond the control of ATTICUS, LLC. To the extent consistent with applicable law, all such risks shall be assumed by the user or buyer.

**DISCLAIMER OF WARRANTIES:** To the extent consistent with applicable law, ATTICUS, LLC makes no other warranties, express or implied, of merchantability or of fitness for a particular purpose or otherwise, that extend beyond statements on this label. **LIMITATIONS OF LIABILITY:** To the extent consistent with applicable law, neither ATTICUS, LLC the manufacturer, nor the Seller shall be liable for any indirect, special, incidental or consequential damages resulting from the use, handling, application, storage, or disposal of this product. To the extent consistent with applicable law, the exclusive remedy of the user or buyer for any and all losses, injuries or damages resulting from the use, handling, application, or storage of this product, whether in contract, warranty, tort, negligence, strict liability or otherwise, shall not exceed the purchase price paid.

[A177.05] is a trademark of Atticus, LLC

[Tempo®] is a registered trademark of Bayer.

Optional Marketing Claims:

- Provides [effective] knockdown and control of listed pests.
- [Provides knockdown of listed pests]
- [Kills listed pests by contact]
- Provides [(control)(protection)(action)] of listed pests.
- For indoor and outdoor use
- Kills listed invading insects around barns, horse stables, and other areas
- Kills listed invading insects around basements, foundations, and baseboards
- Kills a wide range of listed crawling, flying, and wood-infesting [insects][pests]
- Use as an outdoor treatment -stops invading pests [in their tracks]
- Kills listed common pests, including flies, fleas, ticks, ants, and spiders [plus over 60 more]
- Kills over 60 [(insects)(pests)] around barns, horse stables, and other [farm] areas
- Use in and around in barns, horse stables, and animal quarters
- Can be used around animals in barns, horse stables, and animal quarters
- Can be used in and around animal facilities

Alternate Marketing Text:

- Buy just what you need
- Economical [size] – just buy what you need
- Treats the inside and outside of a 25' x 25' barn 5 times.
- Non-staining
- Get the Job Done Right – Use **A177.05**
- . Makes 2 gallons of spray [-Just the amount you need]
- Treats 2,000 square feet
- Economical Concentrated Formula
- Mix and spray

**{LANGUAGE ON LABEL AFFIXED TO CONTAINER}**

BETA-CYFLUTHRIN	GROUP	3A	INSECTICIDE
-----------------	-------	----	-------------

**A177.05<sup>TM</sup>**

[Alternate Brand Name: *Cyprus Ultra SC Premise Spray, Cyprus Ultra SC Concentrate, Tirade Ultra SC*]

[Contains Beta-cyfluthrin, the active ingredient used in Tempo® SC [Ultra] [Ultra Premise Spray] [Ultra Pest Control Concentrate].]

[This product kills crawling, flying, and wood-infesting insects and protects barns, horse stables, and other animal quarters from invading pests. Just mix and spray to provide [(effective) knockdown] control.]

<b>ACTIVE INGREDIENT:</b>	<b>(% by weight)</b>
Beta-Cyfluthrin [CAS No. 68359-37-5].....	11.8%
<b>OTHER INGREDIENTS:</b> .....	<u>88.2%</u>
<b>TOTAL</b> .....	<u>100.0%</u>

Contains 1 lb of Beta-Cyfluthrin per gallon..

**KEEP OUT OF REACH OF CHILDREN**

**CAUTION**

Si usted no entiende la etiqueta, busque a alguien para que se la explique a usted en detalle. (If you **DO NOT** understand the label, find someone to explain it to you in detail.)

<b>FIRST AID</b>	
<b>If swallowed:</b>	<ul style="list-style-type: none"> <li>• Call a poison control center or doctor immediately for treatment advice.</li> <li>• Have person sip a glass of water if able to swallow.</li> <li>• <b>DO NOT</b> induce vomiting unless told to do so by the poison control center or doctor.</li> <li>• <b>DO NOT</b> give anything by mouth to an unconscious person.</li> </ul>
<b>If on skin or clothing:</b>	<ul style="list-style-type: none"> <li>• Take off contaminated clothing.</li> <li>• Rinse skin immediately with plenty of water for 15-20 minutes.</li> <li>• Call a poison control center or doctor for treatment advice.</li> </ul>
<b>If in eyes:</b>	<ul style="list-style-type: none"> <li>• Hold eye open and rinse slowly and gently with water for 15-20 minutes.</li> <li>• Remove contact lenses, if present, after the first 5 minutes, then continue rinsing eye.</li> <li>• Call a poison control center or doctor for treatment advice.</li> </ul>
<b>If inhaled:</b>	<ul style="list-style-type: none"> <li>• Move person to fresh air.</li> <li>• If person is not breathing, call 911 or an ambulance, then give artificial respiration, preferably mouth-to-mouth, if possible.</li> <li>• Call a poison control center or doctor for further treatment advice.</li> </ul>

**HOT LINE NUMBER**

Have the product container or label with you when calling a poison control center or doctor, or going for treatment. You may also contact SafetyCall at **1-844-685-9173** for emergency medical treatment information.

**Note to Physician:** No specific antidote is available. Treat the patient

**For Chemical Emergency:**

**Spill, Leak, Fire, Exposure, or Accident, Call CHEMTREC Day or Night  
Within USA and Canada: 1-800-424-9300 or +1 703-527-3887 (collect calls accepted)**

**PRECAUTIONARY STATEMENTS  
HAZARDS TO HUMANS AND DOMESTIC ANIMALS  
CAUTION**

Harmful if swallowed, inhaled or absorbed through skin. Causes moderate eye irritation. Avoid contact with eyes, skin or clothing. A void breathing spray mist.

Wash thoroughly with soap and water after handling and before eating, drinking, chewing gum, using the toilet, or using tobacco. Remove contaminated clothing and wash before reuse. **ENVIRONMENTAL HAZARDS:** This pesticide is extremely toxic to fish and aquatic invertebrates. Remove from premises or tightly cover fish tanks and disconnect aerators when applying indoors where such containers are present. To protect the environment, **DO NOT** allow pesticide to enter or run off into storm drains, drainage ditches, gutters or surface waters. **DO NOT** apply directly to water, to areas where surface water is present or to intertidal areas below the mean high water mark. Applying this product in calm weather when rain is not predicted for the next 24 hours will help to ensure that wind or rain does not blow or wash pesticide off the treatment area. Rinsing application equipment over the treated area will help avoid run off to water bodies or drainage systems. **DO NOT** apply when weather conditions favor drift from treated areas. Drift and runoff from treated areas may be hazardous to aquatic organisms in neighboring areas. **DO NOT** contaminate water when cleaning equipment or when disposing of equipment wash waters. Apply this product only as specified on this label.

This pesticide is highly toxic to bees exposed to direct treatment or residues on crops or weeds. **DO NOT** apply **A177.05** or allow it to drift onto crops or weeds on which bees are actively foraging. Additional information may be obtained by consulting your Cooperative Extension Service. **PHYSICAL & CHEMICAL HAZARDS DO NOT** use water-based sprays of this product in conduits, motor housings, junction boxes, switch boxes, or other electrical equipment because of possible shock hazard. Do not mix or allow to come in contact with any oxidizing agent. Hazardous chemical reaction may occur.

**STORAGE AND DISPOSAL**

**DO NOT** contaminate water, food or feed by storage or disposal.  
**PESTICIDE STORAGE:** Store in a tightly closed container in a cool, dry place. Store in original container and out of reach of children, preferably in a locked storage area.

**PESTICIDE DISPOSAL:** Pesticide spray mixture or rinsate that cannot be used should be disposed of in a landfill approved for pesticides. Improper disposal of excess pesticide spray mixture or rinsate is a violation of Federal law. If these wastes cannot be disposed of by the use according to label instructions, contact your State Pesticide or Environmental Control Agency or the Hazardous Waste representative at the nearest EPA Regional Office for guidance. Do not pour or dispose down-the-drain or sewer. Call your local solid waste agency for local disposal options.

**CONTAINER HANDLING:**  
[For containers ≤ 5 gallons: **Nonrefillable Container: DO NOT** reuse or refill this container. Triple rinse container (or equivalent) promptly after emptying. Triple Rinse as follows: Empty the remaining contents into application equipment or a mix tank and drain for 10 seconds after the flow begins to drip. Fill the container ¼ full with water and recap. Shake for 10 seconds. Pour rinsate into application equipment or a mix tank or store rinsate for later use or disposal. Drain for 10 seconds after the flow begins to drip. Repeat this procedure two more times. Then offer for recycling if available or puncture and dispose of in a sanitary landfill, or by other procedures allowed by state and local authorities.]

[For containers > 5 gallons: **Nonrefillable container: DO NOT** reuse or refill this container. Triple rinse container (or equivalent) promptly after emptying. Triple Rinse as follows: Empty the remaining contents into application equipment or a mix tank. Fill the container ¾ full with water. Recap and tighten closures. Tip container on its side and roll it back and forth, ensuring at least one complete revolution, for 30 seconds. Stand the container on its end and tip it back and forth several times. Turn the container over onto its other end and tip it back and forth several times. Empty the rinsate into application equipment or a mix tank or store rinsate for later use or disposal. Repeat this procedure two more times. Then offer for recycling if available or puncture and dispose of in a sanitary landfill, or by other procedures allowed by state and local authorities.]

See inside label booklet for additional Precautionary Statements and Directions for Use.

**[A177.05** is not manufactured, or distributed by [Bayer] [Elanco], seller of [Tempo® SC Ultra] [Tempo® SC Ultra Premise Spray] [Tempo® SC Ultra Pest Control Concentrate].]

{Note to reviewer: The statement for use and disclaimer will appear on the base label, if used on the final product packaging, in close proximity to each other and in text which does not excessively stand out over the rest of the labeling text or draw greater attention than other required precautionary labeling.}

Manufactured for:  
**Atticus, LLC**  
940 NW Cary Parkway, Suite 200  
Cary, NC 27513

**EPA Reg. No.:** 91234-XX  
**EPA Est. No.:** \_\_\_\_\_  
**NET CONTENTS:** \_\_\_\_\_

{Note to reviewer: [Text] in brackets denotes optional or explanatory language}  
{Note to reviewer: {Text} in braces denotes where in the final label text will appear}

**{BOOKLET FRONT PANEL LANGUAGE}**

Sublabel C

BETA-CYFLUTHRIN	GROUP 3A	INSECTICIDE
-----------------	----------	-------------

# A177.05 [™]

[Alternate Brand Name: Cyprus Ultra SC Premise Spray, Cyprus Ultra SC Concentrate, Tirade Ultra SC]

[Contains Beta-cyfluthrin, the active ingredient used in Tempo® SC [Ultra] [Ultra Premise Spray] [Ultra Pest Control Concentrate].]

[For broad-spectrum control of listed crawling, flying, and wood-infesting insect pests in and around animal housing, warehouses, and processing and packing plants.] [For Both Indoor and Outdoor Use.]  
**ACTIVE INGREDIENT:** (by weight)  
Beta-Cyfluthrin [CAS No. 68359-37-5].....11.8%  
**OTHER INGREDIENTS:** .....88.2%  
**TOTAL** .....100.0%  
Contains 1 lb of Beta-cyfluthrin per gallon.

**KEEP OUT OF REACH OF CHILDREN**

## CAUTION

**Si usted no entiende la etiqueta, busque a alguien para que se la explique a usted en detalle. (If you DO NOT understand the label, find someone to explain it to you in detail.)**

See [below] [inside label booklet] for [additional] [First Aid,] [and] [Precautionary Statements] [and] [Directions for Use].

[A177.05 is not manufactured, or distributed by [Bayer] [Elanco], seller of [Tempo® SC Ultra] [Tempo® SC Ultra Premise Spray] [Tempo® SC Ultra Pest Control Concentrate].]

{Note to reviewer: The statement for use and disclaimer will appear on the front panel, if used on the final product packaging, in close proximity to each other and in text which does not excessively stand out over the rest of the labeling text or draw greater attention than other required precautionary labeling.}

**EPA Reg. No.: 91234-XX**

**EPA Est. No.:**

**Net Contents:**

Manufactured for:  
**Atticus, LLC**  
940 NW Cary Parkway, Suite 200  
Cary, NC 2751

## {LANGUAGE INSIDE BOOKLET}

<b>FIRST AID</b>	
<b>If swallowed:</b>	<ul style="list-style-type: none"><li>• Call a poison control center or doctor immediately for treatment advice.</li><li>• Have person sip a glass of water if able to swallow.</li><li>• <b>DO NOT</b> induce vomiting unless told to do so by the poison control center or doctor.</li><li>• <b>DO NOT</b> give anything by mouth to an unconscious person.</li></ul>
<b>If on skin or clothing:</b>	<ul style="list-style-type: none"><li>• Take off contaminated clothing.</li><li>• Rinse skin immediately with plenty of water for 15-20 minutes.</li><li>• Call a poison control center or doctor for treatment advice.</li></ul>
<b>If in eyes:</b>	<ul style="list-style-type: none"><li>• Hold eye open and rinse slowly and gently with water for 15-20 minutes.</li><li>• Remove contact lenses, if present, after the first 5 minutes, then continue rinsing eye.</li><li>• Call a poison control center or doctor for treatment advice.</li></ul>
<b>If inhaled:</b>	<ul style="list-style-type: none"><li>• Move person to fresh air.</li><li>• If person is not breathing, call 911 or an ambulance, then give artificial respiration, preferably mouth-to-mouth, if possible.</li><li>• Call a poison control center or doctor for further treatment advice.</li></ul>
<b>HOT LINE NUMBER</b>	
Have the product container or label with you when calling a poison control center or doctor, or going for treatment. You may also contact SafetyCall at <b>1-844-685-9173</b> for emergency medical treatment information.	
<b>Note to Physician:</b> No specific antidote is available. Treat the patient symptomatically.	

**For Chemical Emergency:  
Spill, Leak, Fire, Exposure, or Accident,  
Call CHEMTREC Day or Night  
Within USA and Canada: 1-800-424-9300 or +1 703-527-3887 (collect calls accepted)**

## **PRECAUTIONARY STATEMENTS HAZARDS TO HUMANS AND DOMESTIC ANIMALS**

**CAUTION:** Harmful if swallowed, inhaled or absorbed through skin. Causes moderate eye irritation. A void contact with eyes, skin or clothing. A void breathing spray mist. Wash thoroughly with soap and water after handling and before eating, drinking chewing gum, using the toilet, or using tobacco. Remove contaminated clothing and wash before reuse.

When making general surface treatments to overhead areas, wear safety glasses, goggles or face shield and A minimum of a NIOSH-approved particulate filtering facepiece respirator with any N, R or P filter; OR a NIOSH-approved elastomeric particulate respirator with any N, R or P filter; OR a NIOSH-approved powered air purifying respirator with HE filters.

### **ENVIRONMENTAL HAZARDS**

This pesticide is extremely toxic to fish and aquatic invertebrates. Remove from premises or tightly cover fish tanks and disconnect aerators when applying indoors where such containers are present. To protect the environment, **DO NOT** allow pesticide to enter or run off into storm drains, drainage ditches, gutters or surface waters. **DO NOT** apply directly to water, to areas where surface water is present or to intertidal areas below the mean high water mark. Applying this product in calm weather when rain is not predicted for the next 24 hours will help to ensure that wind or rain does not blow or wash pesticide off the treatment area. Rinsing application equipment over the treated area will help avoid run off to water bodies or drainage systems.

**DO NOT** apply when weather conditions favor drift from treated areas. Drift and runoff from treated areas may be hazardous to aquatic organisms in neighboring areas. **DO NOT** contaminate water when cleaning equipment or when disposing of equipment wash waters. Apply this product only as specified on this label.

This pesticide is highly toxic to bees exposed to direct treatment or residues on crops or weeds. **DO NOT** apply **A177.05** or allow it to drift onto crops or weeds on which bees are actively foraging. Additional information may be obtained by consulting your Cooperative Extension Service.

### PHYSICAL & CHEMICAL HAZARDS

**DO NOT** use water-based sprays of this product in conduits, motor housings, junction boxes, switch boxes, or other electrical equipment because of possible shock hazard. Do not mix or allow to come in contact with any oxidizing agent. Hazardous chemical reaction may occur.

### DIRECTIONS FOR USE

It is a violation of Federal law to use this product in a manner inconsistent with its labeling.

**IMPORTANT:** Read these entire Directions for Use and Limitation of Warranty and Liability before using **A177.05**.

For both indoor and outdoor use.

**DO NOT** allow to enter indoor or outdoor drains.

*No permita la entrada a desagües internos o externos.*

Follow proper disposal procedures on this label.

*Siga las indicaciones del etiquetado para el desecho apropiado del producto.*



### GENERAL INFORMATION FOR STRUCTURAL PEST CONTROL

**A177.05** is a liquid formulation containing 1 lb active ingredient per gallon, which will provide effective knockdown and residual control of the pests listed on this label.

**A177.05** is for use as a general surface, spot, mist, or crack and crevice application in and around buildings and structures and their immediate surroundings: dairies and dairy product processing plants, grain mills, granaries, greenhouses (structures only), industrial buildings, laboratories, livestock housing structures, pet kennels, manufacturing establishments, poultry houses, meat, poultry and egg processing and packing plants, meat and produce canneries, stores, warehouses.

Mix **A177.05** with water and apply with hand pressurized, power operated sprayers or foam generating equipment. Spray pressure should not exceed 50 PSI at the nozzle tip when used indoors. Add the appropriate amount of product when filling sprayer tank with water, shake or agitate as necessary to mix. Diluted spray mixture can be stored overnight and applied the following day; however, mixture should be agitated prior to application to prevent uneven distribution of product. Before leaving spray mixture unagitated for an extended period of time, release tank pressure and elevate nozzle and hose above tank outlet, activate trigger and drain all dilution from hose back into spray tank. Re-tighten spray tank lid and **DO NOT** re-pressurize until starting spray again.

**A177.05** will not stain or cause damage to any painted or varnished surface, plastic, fabric or other surface where water applied alone causes no damage.

### BUFFER FROM WATER

For soil or foliar applications, do not apply by ground within 25 feet of lakes, reservoirs, rivers, permanent streams, marshes or natural ponds, estuaries and commercial fish farm ponds.

## WATER PROTECTION

**DO NOT** apply the product into fish pools, ponds, streams, or lakes. Do not apply directly to sewers or storm drains, or to any area like a drain or gutter where drainage to sewers, storm drains, water bodies, or aquatic habitat can occur.

**DO NOT** allow the product to enter any drain during or after application.

**DO NOT** apply directly to impervious horizontal surfaces such as sidewalks, driveways, and patios except as a spot or crack-and-crevice treatment.

**DO NOT** apply or irrigate to the point of runoff.

For ornamental/recreational turf applications, **DO NOT** apply when the wind speed is greater than 15 mph.

## RAIN-RELATED STATEMENTS

**DO NOT** make applications during rain. Avoid making applications when rainfall is expected before the product has sufficient time to dry (minimum 4 hours). Rainfall within 24 hours after application may cause unintended runoff of pesticide application.

**TANK MIXING:** It is the pesticide user's responsibility to ensure that all products are registered for the intended use. Read and follow the applicable restrictions and limitations and directions for use on all product labels involved in tank mixing. Users must follow the most restrictive directions for use and precautionary statements of each product in the tank mixture. See Extended Cockroach Control with Insect Growth Regulators, Page 4. To check for physical compatibility prior to tank mixing, conduct a small jar compatibility test using proper proportions of chemicals and water. **A177.05** is not compatible with disinfectants and should not be tank mixed with them. Apply **A177.05** and disinfectants separately, as per label directions.

## GENERAL SURFACE APPLICATION

Use 8 milliliters of **A177.05** per 1000 sq ft in sufficient water (under conditions of severe pest infestation or when quicker knock-down and/or residual control is needed, use 16 milliliters of **A177.05** per 1000 sq ft) to adequately cover the area being treated, but which will not allow dripping or run-off to occur (see Note 1). Use a low pressure system with a fan type nozzle to uniformly apply the dilution. Make applications to walls, floors, ceilings, in and around cupboards, between, behind and beneath equipment, appliances, around floor drains, window and door frames, and on the underside of shelves, and drawers. Make applications to floor surfaces along walls and around air ducts; however, **DO NOT** treat entire area of floor or floor coverings. Cover or thoroughly wash all food processing surfaces and utensils following treatment. Cover exposed foodstuffs or remove from area being treated. Re-application can be made at 10-day intervals, if necessary. **DO NOT** apply where electrical short circuits could occur. Use a dust or dry bait in these areas.

### Note 1: Volume of Water Sprays Applied To A Vertical Surface to Attain Appropriate Coverage

Types of Surface	Quarts/1000 Sq Ft	Gallons/1000 Sq Ft	Lbs. AI/1000 Sq Ft
Ceramic tile (glazed)	0.75	0.2	0.2
Stainless Steel	0.75	0.2	0.2
Latex painted plywood (semigloss)	4.0	1.0	1.0
Masonite (smooth)	6.3	1.5	1.5
Unpainted plywood	11.0	2.7	2.7
Unpainted particle board	11.7	3.0	3.0
Cement block (semigloss latex)	12.5	3.2	3.2
Cement block (unfinished)	145.5	36.3	36.3

## SPOT, MIST OR CRACK AND CREVICE APPLICATIONS

Mix 8 milliliters of **A177.05** in one gallon of water to make a dilution of 0.025% active ingredient concentration (under conditions of severe pest infestation or when quicker knock-down and/or longer residual control is needed use 16 milliliters of **A177.05** in one gallon of water to make a dilution of 0.05% active ingredient concentration).



Use a low pressure system with a pin-point or variable pattern nozzle or appropriate foam generating equipment to apply the suspension or sufficient volume of foam in specific areas: cracks and crevices in or behind baseboards in floors, walls, expansion joints, areas around water and sewer pipes, wall voids, or voids in table legs and equipment where pests can hide. Treat surfaces to ensure thorough coverage but avoid runoff. To treat insects harbored in voids and cracks-and-crevices, applications must be made in such a manner to limit dripping and avoid runoff onto untreated structural surfaces and plants.

Make spot treatments to storage areas, closets, around water pipes, doors and windows, behind and under refrigerators, cabinets, sinks, and other equipment, the underside of shelves, and drawers. Spot treatments must not exceed two square feet in size (for example, 2 ft. by 1 ft. or 4 ft. by 0.5 ft.). Reapply **A177.05** at 10-day intervals, if necessary. **DO NOT** apply where electrical short circuits could occur. Use a dust or dry bait in these areas.

### **EXTENDED COCKROACH CONTROL WITH INSECT GROWTH REGULATORS**

Use **A177.05** in a tank mix combination with an Insect Growth Regulator (IGR) for extended control of American, Asian, German, oriental, brown-banded, smoky brown and other species of cockroaches. Use in food areas of food handling establishments only if all products in tank mix are registered for such use. Make applications in accordance with those label instructions which are the same for each product. Prepare the tank mix using the labeled rate of **A177.05** and the IGR of choice by adding the **A177.05** first and making sure it's a well mixed dilution, then adding the correct amount of IGR according to its label instructions. Follow all label instructions for use patterns and spray intervals from the IGR label to achieve maximum benefit.

Refer to the appropriate sections of the label for **A177.05** and the label for the IGR of choice for additional precautions, restrictions, limitations, and application information.

### **FOOD/FEED HANDLING ESTABLISHMENT APPLICATIONS**

**A177.05** applications are permitted in both food/feed and non-food areas of food/feed handling establishments as a general surface, spot, or crack and crevice treatment. Food/feed handling establishments are defined as places other than private residences in which exposed food/feed is held, processed, prepared or served. Included also are areas for receiving, storing, packing (canning, bottling, wrapping, boxing), preparing, edible waste storage and enclosed processing systems (mills, dairies, edible oils, syrups) of food. Serving areas where food is exposed and the facility is in operation are also considered food areas.

**General Surface Application:** **DO NOT** apply as a general surface application in food handling areas when the facility is in operation or foods are exposed. **DO NOT** apply directly to food products. Cover or remove all food processing and/or handling equipment during application. After application, wash all equipment, benches, shelving and other surfaces which food will contact. Clean food handling or processing equipment and thoroughly rinse with clean, fresh water.

**Spot, Crack and Crevice Application:** Spot or crack and crevice applications may be made while the facility is in operation; however, cover or remove food from area being treated. **DO NOT** apply directly to food or food-handling surfaces.

## **INDOOR PEST CONTROL**

### **CRAWLING INSECT PEST CONTROL**

For general pests and occasional invaders make applications in a manner as previously described under General Surface, Spot, or Crack and Crevice Application. Particular attention should be given to treating entry points and harborage areas.

For stored product pest control of exposed adult and immature stages of insect pests, apply to cracks, crevices, and other surfaces where the pests have been seen or have harborage. Treat warehouses, production facilities, storage areas and other areas where products are stored before filling with the product. **A177.05** may be used by pest

control operators and grain producers to treat grain storage facilities and other areas noted above for stored product pest control. Clean all areas prior to use of **A177.05** to increase levels of control. Any foodstuffs infested with pests should be removed and destroyed.

For use by pest control operators or livestock producers in livestock housing structures (including poultry houses) and pet kennels to control crawling and flying insect pests. Apply as a general surface and/or a crack and crevice spray. Clean facilities and supplement interior applications with exterior perimeter treatments for enhanced control. **DO NOT** make interior applications of **A177.05** in areas of facility where animals are present. **DO NOT** make applications to animal feedstuffs or watering equipment.

For the high alkaline environments of broiler houses due to litter content, pre-acidify mix tank water to a pH of 5.0 or less prior to mixing with water-miscible **A177.05**.

Acidifier	Rate
White vinegar	½ cup per one gallon
Citric acid	1 oz per 18 gallons
Sodium bisulfate (poultry water treatment; PWT)	1 oz per 32 gallons

#### FLYING INSECT PEST CONTROL (General Surface Spray)

For control of flying insects indoors make application to surfaces as directed under Directions for Use, where the pests collect or rest. **DO NOT** apply as a “space spray” application.

#### OUTDOOR PEST CONTROL

For control of flying insects outdoors use a 0.05% dilution and make applications to areas where these pests have been seen or found: outside surfaces of buildings, and porches and patios (porches and patios are limited to spot or crack and crevice applications only). Use a 0.05% dilution and make pin stream applications directly to the nests of wasps, yellow-jackets and hornets. For perimeter pest control, make a general surface application to outside surfaces of buildings, garages and other adjacent areas, where pests have been seen or found. To help prevent infestations of buildings by occasional invaders, treat soil, turf or other substrates adjacent to buildings, the building foundation, walls, around doors and windows, soffit areas where these pests are active and may find entrance or harborage. Apply a minimum of 8 milliliters of **A177.05** per 1000 sq ft in sufficient water to provide adequate coverage. For ornamental/recreational turf applications, **DO NOT** apply when the wind speed is greater than 15 mph.

For control of the imported red fire ant, use a 0.05% dilution of **A177.05** and thoroughly drench or inject the entire mound area. Treat all areas of the mound showing activity to provide contact control of the adult fire ants. **A177.05** will provide contact activity and residual repellency in the active mound for 30 days. When using the injection treatment method for control of the imported red fire ant, it is essential that treatment be made to the bottom of the active mound. Apply dilution or sufficient volume of foam throughout the mound using a downward and upward motion of the injector tool. Multiple injection sites may be needed to ensure complete distribution of the suspension throughout the active mound. **DO NOT** use **A177.05** to treat fire ant mounds in any food crop production area, pasture or area where food crop production may occur.

All outdoor applications must be limited to spot or crack-and-crevice treatments only, except for the following permitted uses:

1. Application to pervious surfaces such as soil, lawn, turf, and other vegetation;
2. Perimeter band treatments of 7 feet wide or less from the base of a man-made structure to pervious surfaces (e.g., soil, mulch, or lawn);
3. Applications to underside of eaves, soffits, doors, or windows permanently protected from rainfall by a covering, overhang, awning, or other structure;
4. Applications around potential exterior pest entry points into man-made structures such as doorways and windows, when limited to a band not to exceed one inch;

5. Applications to vertical surfaces (such as the side of a man-made structure) directly above impervious surfaces (e.g., driveways, sidewalks, etc.), up to 2 feet above ground level;
6. Applications to vertical surfaces directly above pervious surfaces, such as soil, lawn, turf, mulch or other vegetation) only if the pervious surface does not drain into ditches, storm drains, gutters, or surface waters.

**CONTROL OF WOOD INFESTING PESTS**

For control of wood infesting beetles on structure surfaces apply a 0.05% dilution of **A177.05**. For treatment of small areas, apply by brushing or spraying the suspension evenly on wood surfaces. For large or overhead areas, apply as a coarse spray to thoroughly cover the area. Cover all surfaces below the area being sprayed with plastic sheeting or other material which can be disposed of by placing in trash if contamination from dripping occurs. Avoid sprayed surfaces until the treated area is completely dry.

For control of above ground termites and wood-infesting beetles in localized areas apply a 0.05% dilution or sufficient volume of foam of **A177.05** to voids and galleries in damaged wood, and in spaces between wooden structural members and between the sill plate and foundation where wood is vulnerable.

Do not use this product as the sole source of control for active, structural infestations by subterranean termites; the purpose of this application is to kill workers or winged reproductive forms of termites which are present at the time of treatment. It is not intended to provide structural pest control. It is not a substitute for mechanical alteration, soil and foundation treatment, but merely a supplement. For active, structural infestations by subterranean termites, this product can only be used to supplement a federally registered conventional product that is registered as a sole source for termite control. This product will not eliminate termite infestations or provide protection against future infestations.

<b>PESTS CONTROLLED BY A177.05*</b>				
<b>INDOOR PREMISE PESTS</b>			<b>FOOD PROCESSING PESTS</b>	<b>OUTDOOR/PERIMETER PESTS</b>
<b>Crawling Pests</b>	<b>Flying Pests</b>	<b>Stored Product Pests</b>	(Same crawling & flying pests, & stored product pests as for INDOOR PREMISE) and Fruit flies, Phorid flies and Sciarid flies	
Ants (except Pharaoh) Bedbugs Carpet beetles Centipedes Cockroaches American Asian German Oriental Brown-banded Smoky brown Crickets Darkling beetles Earwigs Firebrats Millipedes Pillbugs Silverfish Sowbugs Spiders	Clothes moths Flies Gnats Midges Mosquitoes Moths Wasps Yellow jackets	Beetles (exposed adults & immature stages) Cadelle Cigarette Confused Flour Dermestid Drug store Granary weevil Hide Larder Leather Lesser grain borer Lesser mealworm Merchant grain Mealworm Red flour Rice weevil Sawtoothed grain Warehouse Moths Indian meal Mediterranean flour	<b>WOOD INFESTING PESTS</b>  Beetles Ambrosia Deathwatch False powderpost Old house borer Powderpost Carpenter ants Carpenter bees Termites Subterranean** Formosan Drywood	Ants (except Pharaoh) Bees Boxelder bugs Carpenter ants Cecidflies Centipedes Clusterflies Cockroaches Crickets Elm leaf beetle Fire ants Firebrats Flies Fleas Gnats Ground beetles Hornets Imported red fire ants Midges Millipedes Mosquitoes Moths Scorpions Silverfish Spiders Ticks Wasps Yellow jackets

\*For **GENERAL SURFACE APPLICATION**, use 8 milliliters of **A177.05** per 1000 square feet in sufficient water to adequately cover the area being treated.

\*For **SPOT, CRACK AND CREVICE APPLICATIONS**, mix 8 milliliters **A177.05** in one gallon of water to make a 0.025% active ingredient concentration.

\*\*Only for control of above-ground, winged forms of subterranean termites.

## STORAGE AND DISPOSAL

**DO NOT** contaminate water, food or feed by storage or disposal.

**PESTICIDE STORAGE:** Store in a tightly closed container in a cool, dry place. Store in original container and out of reach of children, preferably in a locked storage area.

**PESTICIDE DISPOSAL:** Pesticide spray mixture or rinsate that cannot be used should be disposed of in a landfill approved for pesticides. Improper disposal of excess pesticide spray mixture or rinsate is a violation of Federal law. If these wastes cannot be disposed of by the use according to label instructions, contact your State Pesticide or Environmental Control Agency or the Hazardous Waste representative at the nearest EPA Regional Office for guidance. Do not pour or dispose down-the-drain or sewer. Call your local solid waste agency for local disposal options.

### CONTAINER HANDLING:

**[For containers ≤ 5 gallons: Nonrefillable Container: DO NOT** reuse or refill this container. Triple rinse container (or equivalent) promptly after emptying. Triple Rinse as follows: Empty the remaining contents into application equipment or a mix tank and drain for 10 seconds after the flow begins to drip. Fill the container ¼ full with water and recap. Shake for 10 seconds. Pour rinsate into application equipment or a mix tank or store rinsate for later use or disposal. Drain for 10 seconds after the flow begins to drip. Repeat this procedure two more times. Then offer for recycling if available or puncture and dispose of in a sanitary landfill, or by other procedures allowed by state and local authorities.]

**[For containers > 5 gallons: Nonrefillable container: DO NOT** reuse or refill this container. Triple rinse container (or equivalent) promptly after emptying. Triple Rinse as follows: Empty the remaining contents into application equipment or a mix tank. Fill the container ¼ full with water. Recap and tighten closures. Tip container on its side and roll it back and forth, ensuring at least one complete revolution, for 30 seconds. Stand the container on its end and tip it back and forth several times. Turn the container over onto its other end and tip it back and forth several times. Empty the rinsate into application equipment or a mix tank or store rinsate for later use or disposal. Repeat this procedure two more times. Then offer for recycling if available or puncture and dispose of

## LIMITATION OF WARRANTY AND LIABILITY

**IMPORTANT: READ BEFORE USE.** Read the entire Directions for Use, Conditions of Warranties and Limitations of Liability before using this product. If these terms and conditions are not acceptable, return the unopened product container at once. By using this product, user or buyer accepts the following Disclaimer of Warranties and Limitations of Liability. **CONDITIONS:** The directions for use of this product are believed to be adequate and must be followed carefully. However, it is impossible to eliminate all risks associated with the use of this product. Ineffectiveness, injury, and other unintended consequences may result because of such factors as manner of use or application (including misuse), the presence of other materials, weather conditions, and other unknown factors, all of which are beyond the control of ATTICUS, LLC. To the extent consistent with applicable law, all such risks shall be assumed by the user or buyer.

**DISCLAIMER OF WARRANTIES:** To the extent consistent with applicable law, ATTICUS, LLC makes no other warranties, express or implied, of merchantability or of fitness for a particular purpose or otherwise, that extend beyond statements on this label. **LIMITATIONS OF LIABILITY:** To the extent consistent with applicable law, neither ATTICUS, LLC the manufacturer, nor the Seller shall be liable for any indirect, special, incidental or consequential damages resulting from the use, handling, application, storage, or disposal of this product. To the extent consistent with applicable law, the exclusive remedy of the user or buyer for any and all losses, injuries or damages resulting from the use, handling, application, or storage of this product, whether in contract, warranty, tort, negligence, strict liability or otherwise, shall not exceed the purchase price paid.

[A177.05] is a trademark of Atticus, LLC

[Tempo®] is a registered trademark of Bayer.

**LANGUAGE ON LABEL AFFIXED TO CONTAINER}**

BETA-CYFLUTHRIN	GROUP 3A	INSECTICIDE
-----------------	----------	-------------

**A177.05<sup>TM</sup>**

[Alternate Brand Name: *Cyprus Ultra SC Premise Spray, Cyprus Ultra SC Concentrate, Tirade Ultra SC*]

[Contains Beta-cyfluthrin, the active ingredient used in Tempo<sup>®</sup> SC [Ultra] [Ultra Premise Spray] [Ultra Pest Control Concentrate].]

[For broad-spectrum control of crawling, flying, and wood-infesting insect pests in and around animal housing, warehouses, and processing and packing plants.]

**ACTIVE INGREDIENT:** (% by weight)

Beta-cyfluthrin [CAS No. 68359-37-5].....11.8%

**OTHER INGREDIENTS:**.....88.2%

**TOTAL** ..... 100.0%

Contains 1 lb of Beta-cyfluthrin per gallon.

**KEEP OUT OF REACH OF CHILDREN**

**CAUTION**

Si usted no entiende la etiqueta, busque a alguien para que se la explique a usted en detalle. (If you **DO NOT** understand the label, find someone to explain it to you in detail.)

FIRST AID	
<b>If swallowed:</b>	<ul style="list-style-type: none"> <li>Call a poison control center or doctor immediately for treatment advice.</li> <li>Have person sip a glass of water if able to swallow.</li> <li><b>DO NOT</b> induce vomiting unless told to do so by the poison control center or doctor.</li> <li><b>DO NOT</b> give anything by mouth to an unconscious person.</li> </ul>
<b>If on skin or clothing:</b>	<ul style="list-style-type: none"> <li>Take off contaminated clothing.</li> <li>Rinse skin immediately with plenty of water for 15-20 minutes.</li> <li>Call a poison control center or doctor for treatment advice.</li> </ul>
<b>If in eyes:</b>	<ul style="list-style-type: none"> <li>Hold eye open and rinse slowly and gently with water for 15-20 minutes.</li> <li>Remove contact lenses, if present, after the first 5 minutes, then continue rinsing eye.</li> <li>Call a poison control center or doctor for treatment advice.</li> </ul>
<b>If inhaled:</b>	<ul style="list-style-type: none"> <li>Move person to fresh air.</li> <li>If person is not breathing, call 911 or an ambulance, then give artificial respiration, preferably mouth-to-mouth, if possible.</li> <li>Call a poison control center or doctor for further treatment advice.</li> </ul>

**HOT LINE NUMBER**

Have the product container or label with you when calling a poison control center or doctor, or going for treatment. You may also contact SafetyCall at **1-844-685-9173** for emergency medical treatment information.

**Note to Physician:** no specific antidote is available. Treat the patient symptomatically

**For Chemical Emergency:**

**Spill, Leak, Fire, Exposure, or Accident, Call CHEMTREC Day or Night**  
**Within USA and Canada: 1-800-424-9300 or +1 703-527-3887 (collect calls accepted)**

**PRECAUTIONARY STATEMENTS**

**HAZARDS TO HUMANS AND DOMESTIC ANIMALS**

**CAUTION**

Harmful if swallowed, inhaled or absorbed through skin. Causes moderate eye irritation. A void contact with eyes, skin or clothing. A void breathing spray mist. Wash thoroughly with soap and water after handling and before eating, drinking,

chewing gum, using the toilet, or using tobacco. Remove contaminated clothing and wash before reuse. **ENVIRONMENTAL HAZARDS:** This pesticide is extremely toxic to fish and aquatic invertebrates. Remove from premises or tightly cover fish tanks and disconnect aerators when applying indoors where such containers are present. To protect the environment, **DO NOT** allow pesticide to enter or run off into storm drains, drainage ditches, gutters or surface waters. **DO NOT** apply directly to water, to areas where surface water is present or to intertidal areas below the mean high water mark Applying this product in calm weather when rain is not predicted for the next 24 hours will help to ensure that wind or rain does not blow or wash pesticide off the treatment area. Rinsing application equipment over the treated area will help avoid run off to water bodies or drainage systems. **DO NOT** apply when weather conditions favor drift from treated areas. Drift and runoff from treated areas may be hazardous to aquatic organisms in neighboring areas. **DO NOT** contaminate water when cleaning equipment or when disposing of equipment wash waters. Apply this product only as specified on this label. This pesticide is highly toxic to bees exposed to direct treatment or residues on crops or weeds. **DO NOT** apply **A177.05** or allow it to drift onto crops or weeds on which bees are actively foraging. Additional information may be obtained by consulting your Cooperative Extension Service.

**PHYSICAL & CHEMICAL HAZARDS DO NOT** use water-based sprays of this product in conduits, motor housings, junction boxes, switch boxes, or other electrical equipment because of possible shock hazard. Do not mix or allow to come in contact with any oxidizing agent. Hazardous chemical reaction may occur.

**STORAGE AND DISPOSAL**

**DO NOT** contaminate water, food or feed by storage or disposal.  
**PESTICIDE STORAGE:** Store in a tightly closed container in a cool, dry place. Store in original container and out of reach of children, preferably in a locked storage area.

**PESTICIDE DISPOSAL:** Pesticide spray mixture or rinsate that cannot be used should be disposed of in a landfill approved for pesticides. Improper disposal of excess pesticide spray mixture or rinsate is a violation of Federal law. If these wastes cannot be disposed of by the use according to label instructions, contact your State Pesticide or Environmental Control Agency or the Hazardous Waste representative at the nearest EPA Regional Office for guidance. Do not pour or dispose down-the-drain or sewer. Call your local solid waste agency for local disposal options.

**CONTAINER HANDLING:**

**[For containers ≤ 5 gallons: Nonrefillable Container: DO NOT** reuse or refill this container. Triple rinse container (or equivalent) promptly after emptying. Triple Rinse as follows: Empty the remaining contents into application equipment or a mix tank and drain for 10 seconds after the flow begins to drip. Fill the container ¼ full with water and recap. Shake for 10 seconds. Pour rinsate into application equipment or a mix tank or store rinsate for later use or disposal. Drain for 10 seconds after the flow begins to drip. Repeat this procedure two more times. Then offer for recycling if available or puncture and dispose of in a sanitary landfill, or by other procedures allowed by state and local authorities.]

**[For containers > 5 gallons: Nonrefillable container: DO NOT** reuse or refill this container. Triple rinse container (or equivalent) promptly after emptying. Triple Rinse as follows: Empty the remaining contents into application equipment or a mix tank. Fill the container ¼ full with water. Recap and tighten closures. Tip container on its side and roll it back and forth, ensuring at least one complete revolution, for 30 seconds. Stand the container on its end and tip it back and forth several times. Turn the container over onto its other end and tip it back and forth several times. Empty the rinsate into application equipment or a mix tank or store rinsate for later use or disposal. Repeat this procedure two more times. Then offer for recycling if available or puncture and dispose of in a sanitary landfill, or by other procedures allowed by state and local authorities.]

See inside label booklet for additional Precautionary Statements and Directions for Use.

**[A177.05** is not manufactured, or distributed by [Bayer] [Elanco], seller of [Tempo<sup>®</sup> SC Ultra] [Tempo<sup>®</sup> SC Ultra Premise Spray] [Tempo<sup>®</sup> SC Ultra Pest Control Concentrate].]

*{Note to reviewer: The statement for use and disclaimer will appear on the base label, if used on the final product packaging, in close proximity to each other and in text which does not excessively stand out over the rest of the labeling text or draw greater attention than other required precautionary labeling.}*

Manufactured for:  
**Atticus, LLC**  
 940 NW Cary Parkway, Suite 200  
 Cary, NC 27513

**EPA Reg. No.: 91234-XX**  
**EPA Est. No.: \_\_\_\_\_**  
**NET CONTENTS: \_\_\_\_\_**