
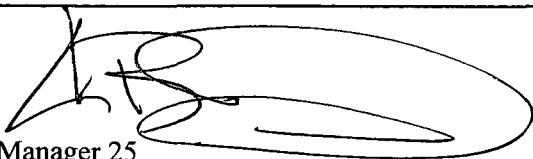


88810-1

9/6/2012

1/12

	U S ENVIRONMENTAL PROTECTION AGENCY Office of Pesticide Programs Registration Division (7505P) Ariel Rios Building 1200 Pennsylvania Ave , NW Washington, D C 20460	EPA Reg Number 88810-1	Date of Issuance SEP 6 2012
	NOTICE OF PESTICIDE <input checked="" type="checkbox"/> Registration <input type="checkbox"/> Reregistration (under FIFRA as amended)	Term of Issuance Unconditional	
		Name of Pesticide Product Oblitroot	
Name and Address of Registrant (include ZIP Code) Olvidium, Inc 6808 66th St Columbus, NE 68601			
Note: Changes in labeling differing in substance from that accepted in connection with this registration must be submitted to and accepted by the Registration Division prior to use of the label in commerce. In any correspondence on this product always refer to the above EPA registration number.			
<p>On the basis of information furnished by the registrant the above named pesticide is hereby registered/reregistered under the Federal Insecticide Fungicide and Rodenticide Act. Registration is in no way to be construed as an endorsement or recommendation of this product by the Agency. In order to protect health and the environment, the Administrator on her motion may at any time suspend or cancel the registration of a pesticide in accordance with the Act. The acceptance of any name in connection with the registration of a product under this Act is not to be construed as giving the registrant a right to exclusive use of the name or to its use if it has been covered by others.</p> <p>The Basic Confidential Statement of Formula (CSF) dated 08/01/12 is acceptable</p> <p>This product is registered in accordance with FIFRA sec 3(c)(5) provided that you</p> <ol style="list-style-type: none">1 Submit and/or cite all data required for registration/reregistration review of your product when the Agency requires all registrants of similar products to submit data2 Make the following label revisions<ol style="list-style-type: none">a Revise the EPA Reg No to 88810-1 on the master, Part A, and Part B labelsb Assure that the establishment number and net content are added to the labelc Change company address on first page of master label to "6808 66th St "d On Part B label, move "Wear protective eyewear such as goggles, face shield, or glasses" to the Personal Protective Equipment section3 The data requirements for storage stability (830-6317) and corrosion characteristics (830-6320) have not been satisfied and must be submitted within eighteen months of the date of this notice4 Submit one (1) copy of the revised final printed label for the record <p>If these requirements are not complied with, the registration will be subject to cancellation in accordance with FIFRA sec 6(e). Your release for shipment of the product constitutes acceptance of these conditions. A stamped copy of the label is enclosed for your records.</p> <p>If you have any questions regarding this notice, please contact Maggie Rudick of my staff at 703-347-0257 or rudick.maggie@epa.gov</p>			
Signature of Approving Official  Kable Bo Davis, Product Manager 25 Herbicide Branch Registration Division (7505P)		Date SEP 6 2012	

2/12

Oblitroot

ACCEPTED

SEP 6 2012

Under the Federal Insecticide
Fungicide and Rodenticide Act
as amended for the pesticide
registered under
EPA Reg No 98810-1

Kills Roots in Sanitary and Storm Sewers

Self Foams on Contact With Water

Inhibits New Root Growth

Does Not Contain Copper

Active Ingredient

Dichlobenil (2,6 dichlorobenzonitrile)

Other Ingredients

Total

1 5%

98 5%

100 00%

Keep Out of Reach of Children

CAUTION

See [Side] [Back] [Attached Label Booklet] Panel For Additional Precautionary Statements

EPA Reg No

EPA Est 88810-NE-001

Olvidium, Inc

6806-66th St Columbus, Nebraska 68601

1-928-246-1580

[Optional placement of statement On Front or Back/Side of container and/or label booklet]

This product is composed of 2 separate components Part B is sulfamic acid, a dry solid crystal Part A contains the pesticidal component and is a thick liquid Both parts **must** be used together in any application

When handling Sulfamic Acid, refer to PPE section attached to Part B container

How it Works

Oblitroot contains Dichlobenil which kills tree roots and prevents new root growth Dichlobenil is readily absorbed on organic and inorganic colloids of sludge and clay in pipe joints providing residual control of root re-growth by inhibiting the development of actively dividing meristem cells in root tips New root growths formed outside the pipe joints are retarded or inhibited in growth when they come in contact with Dichlobenil inside the pipe Oblitroot self-foams on contact with water The foam acts as a delivery agent putting the active ingredient in contact with the tree roots above the flow of water in the pipes

NET WEIGHT _____ LBS

Precautionary Statements**HAZARDS TO HUMANS AND DOMESTIC ANIMALS****CAUTION**

Avoid contact with eyes skin or clothing Harmful if swallowed, inhaled or absorbed through the skin

Avoid breathing dust

Causes moderate eye irritation

First Aid

If In Eyes	Hold eye open and rinse slowly and gently with water for 15 20 minutes Remove contact lenses if present, after the first 5 minutes then continue rinsing eye Call a poison control center (1 800 222 1222) or doctor for treatment advice
If Inhaled	Move person to fresh air If person is not breathing call 911 or an ambulance then give artificial respiration preferably by mouth to mouth if possible Call a poison control center or doctor for further treatment advice
If on skin	Take off contaminated clothing Rinse skin immediately with plenty of water for 15 20 minutes Call a poison control center or doctor for treatment advice
If swallowed	Call a poison control center or doctor immediately for treatment advice Have person sip a glass of water if able to swallow Do not induce vomiting unless told to do so by the poison control center (1 800 222 1222) or doctor Do not give anything by mouth to an unconscious person

If household baking soda is available add it to water and drink if Part B is ingested For eye and skin contact apply baking soda to contact sites to neutralize sulfamic acid in Part B

Hot Line Number

Have the product container or label with you when calling a poison control center doctor, or going for treatment
For emergency assistance please call toll free **1-800-222-1222**

Note to Physician

Probable mucosal damage may contraindicate the use of gastric lavage Measures against circulatory shock respiratory depression and convulsions may be needed

Personal Protective Equipment (PPE)

Applicators and other handlers including mixers and loaders, must wear long-sleeved shirt, long pants shoes plus socks and chemical resistant gloves Mixers and loaders must also wear a chemical resistant apron Follow manufacturer's instructions for cleaning/maintaining PPE If no such instructions for washables exist, use detergent and hot water Keep and wash PPE separately from other laundry

User Safety Recommendations

Users should	Wash hands before eating drinking chewing gum using tobacco or using the toilet Remove clothing and PPE immediately if pesticide gets inside Then wash thoroughly and put on clean clothing Remove PPE immediately after handling this product Wash the outside of gloves before removing As soon as possible wash thoroughly and change into clean clothing
---------------------	--------------------------------------------------------------------------------------------------------------------------------------------------------------------------------------------------------------------------------------------------------------------------------------------------------------------------------------------------------------

Environmental Hazards

For terrestrial uses do not use near a well or where drinking water is stored Do not apply directly to water or to areas where surface water is present or to intertidal areas below the mean high water mark Do not contaminate water when disposing of equipment wash water or rinsate This chemical has properties and characteristics associated with chemicals detected in ground water The use of this chemical in areas where soils are permeable particularly where the water table is shallow may result in ground-water contamination

Directions for Use

It is a violation of Federal Law to use this product in a manner inconsistent with its labeling Read the following directions for use thoroughly before application

Before using Oblitroot on any sewer line with more than one root intrusion the roots should be cut out If this is not done the foam which travels down the line will only collide with the first set of roots and be obstructed from flowing down and reaching other intrusions and joints

[THE FOLLOWING DIRECTIONS FOR USE WILL APPEAR ON PART A AND B OF OUR 1 6 POUND CONTAINER For residential 4'x100' long sewer lines (Part B contains 352# solid and Part A contains 1 248# liquid for 1 6# total application)]

[THE FOLLOWING DIRECTIONS FOR USE WILL APPEAR ON PART A AND B OF OUR 2 4 POUND CONTAINER For residential 6'x100' long sewer lines (Part B contains 55# solid and Part A contains 1 85# liquid for 2 4# total application)]

Residential Application Method for Sewer Lines that have Root Problems

For residential 4'x100' long sewer lines use the 1 6# container size

For residential 6'x100' long sewer lines use the 2 4# container size

For both Part A and Part B ADD ENTIRE CONTENTS of Part B (solid) to the toilet bowl Then pour entire contents of Part A (liquid) to toilet bowl Flush immediately to avoid foam overflowing bowl Flush a second time to push foam completely into sewer line and a third time if you have a 1 6gallon low flow toilet Restrict water usage for four to six hours after application Do not apply through sink or tub

Make sure that when you are pouring the chemical into the application site you do not create a splash which could come in contact with user's eyes

Commercial application for 4'x100' or 6'x100' residential sewer lines with root problems

Clear obstructions in the line with rooter cable augers/cutters so that flow is restored Attach an Olvidium-Oblitroot sponge applicator to the end of the auger/cable This can be a set of rollers sponge or mop head (see Olvidium's literature to determine best choice) Run the cable with the attachment down the line past the last obstruction which was cut out

Mix Part A into a 5 gallon bucket with 1 cup of water Add Part B and stir with a paint stirring stick or a similar device The 2 parts will foam and fill the bucket Before the foam reaches the top of the bucket pour the foam contents into the cleanout where the cable is located Wait 60 seconds for the foam to travel to the attachment in the line The foam will float on any water in the line Withdraw the cable slowly The attachment will rotate and brush/push the foam onto the pipe and root surfaces and into the joint in which they grew Ensure joint is filled with foam It is desirable that the foam has as little as possible water mixed in As it dries it forms a water resistant film similar to paint which will continue to kill roots and prevent re-growth for as long as it is present

Oblitroot contains soybean oil and synthetic latex which permits it to self foam without any water A small amount of water is added to improve its flow characteristics into the line

Maximum Application Rates

Use one 1 6# bottle for 4' x 100' line (Add both Part A and Part B)

Use one 2 4# bottle for 6' x 100' line (Add both Part A and Part B)

[Some sewer lines have multiple intrusions which block water and root killer flow In this case it may be necessary to use the illustrated sponge method of application to force it through and onto root intrusions]

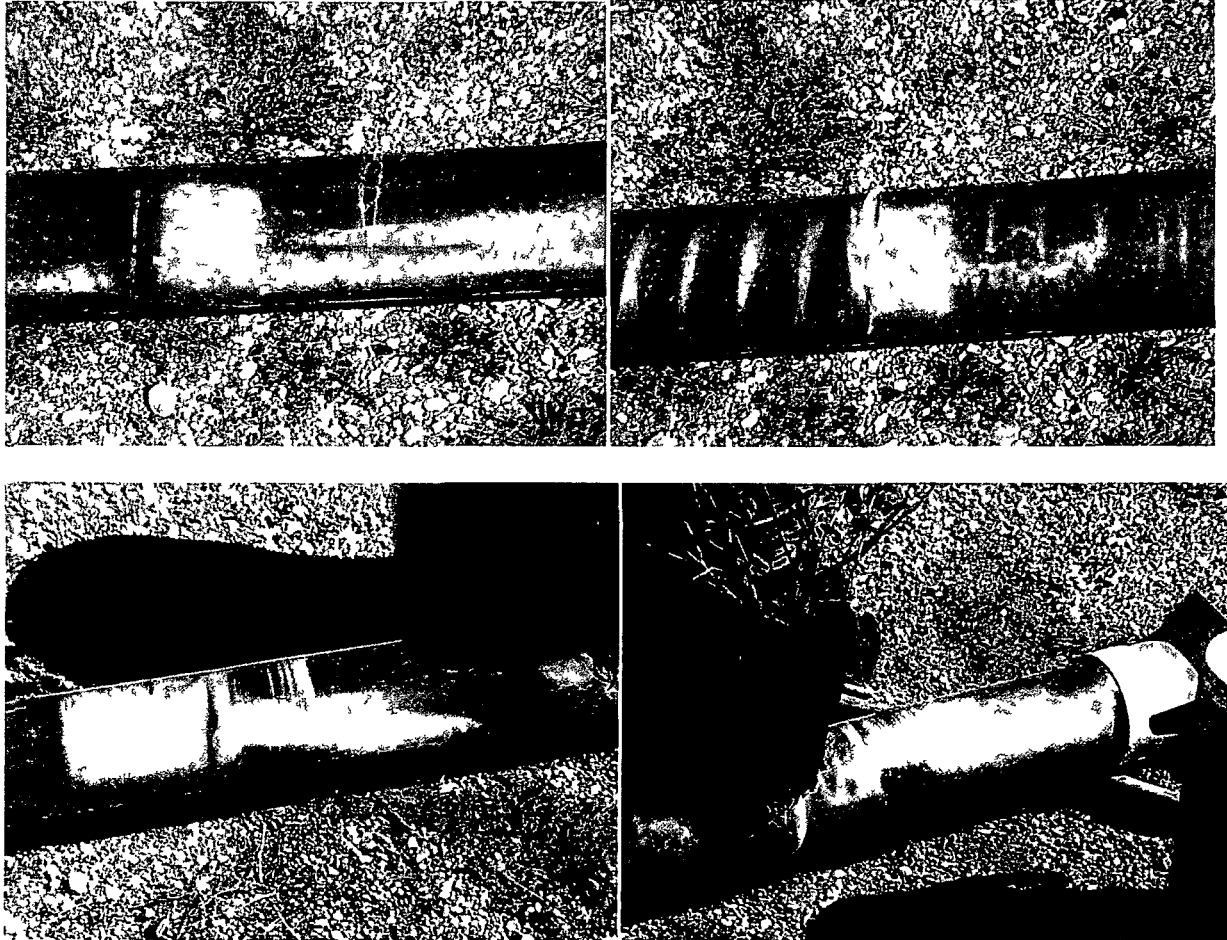
NOT FOR USE IN SEPTIC SYSTEMS IN THE STATE OF FLORIDA

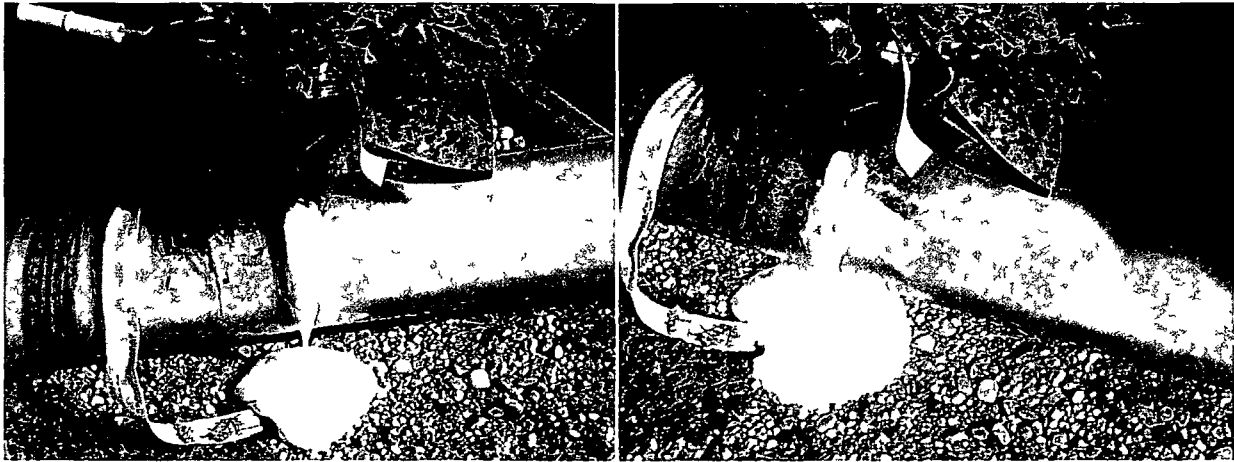
Sponge Application Method

))

Attach the sponge applicator to the end of your sewer cable. Send the cable to the end of the line or past the known root intrusion. Add the Oblitroot foam to the cleanout or manhole after mixing as directed above. Wait 60 seconds for the foam to travel to the attachment in the line. The foam will float on any water in the line. Withdraw the cable slowly. The attachment will rotate and brush/push the foam onto the pipe and root surfaces and into the joint in which they grew. To ensure joint is filled with foam, it is desirable that the foam has as little as possible water mixed in. As it dries, it forms a water resistant film similar to paint which will continue to kill roots and prevent re-growth for as long as it is present.

The photos illustrate the idea. Here you see the sponge on the end of a cable inside a pipe past the break in the line. As it is retracted, it pushes Oblitroot foam into the joint and also onto roots we placed onto and in the line. The photos illustrate the idea.





Do not flush the toilet or run water into the line for at least 3 4 hours For best results apply foam in the evening and let dry overnight for 12 hours

[THE FOLLOWING DIRECTIONS FOR USE WILL APPEAR ON PART A AND B OF OUR 9 5 POUND CONTAINERS (Part B contains 2 1# sulfamic acid and Part A contains 7 4# Dichlobenil mixture for 9 5# total application)]

Municipal Sewer Line Application Rates

Quantity of 9 5# containers	Diameter of Line	Length of Line*
1 (total of 9 5#)	8 inch	300 feet
1 5	12 inch	300 feet
2	16 inch	300 feet
2 5	20 inch	300 feet
3	24 inch	300 feet
5	36 inch	300 feet

*Add an extra 50% of quantity for lines 450 feet or longer

Municipal Directions for Use

Commercial application for 8"x300' or larger municipal sewer lines with root problems

Clear obstructions in the line with roter cable-augers/cutters so that flow is restored Attach an Olvidium Oblitroot applicator to the end of the auger/cable This can be a set of rollers sponge or mop head (see Olvidium s literature to determine best choice and size) Run the cable with the attachment down the line past the last obstruction which was cut out or to the end of the line being cleared/treated

Mix Part A into a 55 gallon drum with ½ 1 gallon of water Add Part B and stir with a stirring stick or a mixing device The 2 parts will foam and partially fill the drum Before the foam reaches the top of the drum pour the foam contents into the manhole upstream where the cable is located The gravity fed foam should travel into the line Wait 2 minutes for the foam to travel to the attachment in the line The foam will float on any water in the line Withdraw the cable slowly The attachment will rotate and brush/push the foam onto the pipe and root surfaces and into the joint in which they grew The idea is to fill the joint with foam It is desirable that the foam has as little water mixed in as possible As it dries it forms a water resistant film similar to paint which will continue to kill roots and prevent re growth for as long as it is present The photos above illustrate the idea

Oblitroot contains soybean oil and synthetic latex which permits it to self foam without any water A small amount of water is added to improve its flow characteristics into the line Larger lines may require additional water (5-10 gallons) poured in after the foam to enable proper flow down the line

An alternative method of applying would be to pour the foam from the drum into a 4 6 funnel and hose at ground level which feeds into the line directly at the bottom of the manhole

[THE FOLLOWING TWO PARAGRAPHS WILL APPEAR ON 1 6#, 2 4# and 9 5# CONTAINERS SOLD AT RETAIL LOCATIONS FOR RESIDENTIAL-USE]

[Application Method for Root Control Along Sidewalks and Driveways

To inhibit the entry of roots beneath pavement structures and the resulting damage caused by root growth cut a 3" wide and deep edging along the structure and pour 1/2 oz of premixed (Part A and B) Oblitroot into a thin of 3" wide edge strip per running foot Then cover the edged area with soil Immediately following application, thoroughly water in Oblitroot Repeat annually to prevent root growth near the surface along sidewalks and driveways Do not enter or allow workers to enter the treated area until Oblitroot is thoroughly watered in and the treated soil has dried]

[Application Method for Root Control In Between Tree Roots and Sewer Lines

To prevent long term root growth from the tree to sewer lines, bore a series of small holes 2 feet apart into the ground near the offending tree or outside the sewer joints using water or mechanical boring equipment Add 1/4 oz of premixed Part A and B of Oblitroot per hole and fill with soil so that the holes location and depth is directly between the offending tree and sewer line Immediately following application, thoroughly water in Oblitroot Repeat annually to prevent root growth in between tree roots and sewer lines Do not enter or allow workers to enter the treated area until Oblitroot is thoroughly watered in and the treated soil has dried]

Storm Line Application and Usage Rates

Oblitroot may be applied in a storm line by applying to the line in the same manner as sewer lines

Quantity of 9 5# containers	Diameter of Line	Length of Line*
1 (total of 9 5#)	8 inch	300 feet
1 5	12 inch	300 feet
2	16 inch	300 feet
2 5	20 inch	300 feet
3	24 inch	300 feet
5	36 inch	300 feet

*Add anextra 50% of quantity for lines 450 feet or longer

Do not apply this product in a way that will contact any person or pet, either directly or through drift Keep people and pets out of area during application

NOT FOR USE IN SEPTIC SYSTEMS IN THE STATE OF FLORIDA

[THE FOLLOWING STORAGE AND DISPOSAL LANGUAGE WILL APPEAR ON PART A AND B OF OUR 1 6 2 4 AND 9 5POUND COMBINED PRODUCTCONTAINERS]

STORAGE AND DISPOSAL

Do not contaminate water food or feed by storage and disposal'

Pesticide Storage Store in a dry place Avoid storage near food or feed products

Container Disposal Non refillable container Do not reuse or refill this container

Completely empty container by shaking and tapping the sides and bottom to loosen clinging particles Empty residue from containers into application site Triple rinse with a small amount of water to reduce foaming Pour rinsate from container into application site If empty place in trash or offer for recycling, if available

If partially filled call your local solid waste agency for disposal instructions or call 1 800-CLEANUP

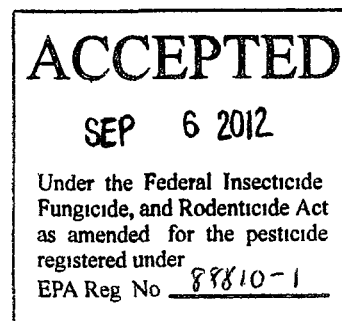
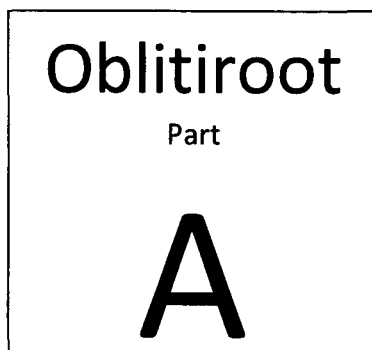
To properly clean equipment run water over equipment to wash away residue and ensure the water flows into the toilet bowl or drains into a floor drain and ends up in the sewer line

THE FOLLOWING WARRANTY LANGUAGE WILL APPEAR ON ALL CONTAINERS

NOTICE TO THE EXTENT CONSISTENT WITH APPLICABLE LAW MANUFACTURER WILL NOT BE LIABLE FOR ANY LOSS, INJURY OR DAMAGES AND TO THE EXTENT CONSISTENT WITH APPLICABLE LAW PURCHASERS AND/OR USERS OF THIS PRODUCT HEREBY WAIVE ANY STRICT LIABILITY THERE ARE NO IMPLIED WARRANTIES OF MERCHANTABILITY OR OF FITNESS FOR THE PARTICULAR PURPOSE, AND THERE ARE NO OTHER IMPLIED WARRANTIES EXCEPT AS SPECIFICALLY SET FORTH ON THIS LABEL MANUFACTURER'S OBLIGATION ON ANY CLAIM IS LIMITED TO REPLACEMENT OF ANY DEFECTIVE PACKAGE OF OBLITIROOT TO THE EXTENT CONSISTENT WITH APPLICABLE LAW MANUFACTURER WILL NOT BE LIABLE FOR ANY LOSS INJURY OR DAMAGES TO PERSONS OR PROPERTY RESULTING FROM FAILURE OR IMPROPER USE OF THE PRODUCT, NOR WILL THE MANUFACTURER BE LIABLE FOR ANY DIRECT INDIRECT, SPECIAL OR CONSEQUENTIAL DAMAGES OF ANY KIND SUSTAINED BY THE PURCHASER OR USER OF THIS PRODUCT TO THE EXTENT CONSISTENT WITH APPLICABLE LAW PURCHASERS AND/OR USERS OF THIS PRODUCT HEREBY WAIVE ANY STRICT LIABILITY OR PRODUCT LIABILITY CLAIM THEY MIGHT HAVE AGAINST THE MANUFACTURER AND/OR SELLER SELLER AND MANUFACTURER ARE NOT LIABLE FOR ANY USE OF THIS PRODUCT NOT IN COMPLIANCE WITH THE DIRECTIONS ON THIS LABEL

[EPA approval date registration # and manufacturing address]

9/12



Keep Out of Reach of Children
CAUTION

Ingredients

Active Ingredient	
Dichlobenil (2,6 dichlorobenzonitrile)	1 924%
Other Ingredients	98 076%
Total	100 00%

Directions for Use

User must follow all directions and precautions on master label before use
It is a violation of federal law to use this product in a manner inconsistent with its labeling

For residential 4 x100 long sewer lines (Part B contains 352# solid and Part A contains 1 248# liquid for 1 6# total)
For residential 6 x100 long sewer lines (Part B contains 55# solid and Part A contains 1 85# liquid for 2 4# total)

Residential Application Method for Sewer Lines that have Root Problems

For residential 4 x100 sewer lines use the 1 6# container size

For residential 6 x100 sewer lines use the 2 4# container size

For both Part A and Part B ADD ENTIRE CONTENTS of Part B (solid) to the toilet bowl Then pour entire contents of Part A (liquid) to toilet bowl Flush immediately to avoid foam overflowing bowl Flush a second time to push foam completely into sewer line and a third time if you have a 1 6 gallon low flow toilet Restrict water usage for four to six hours after application
Do not apply through sink or tub

Precautionary Statements

CAUTION Avoid contact with eyes skin or clothing Harmful if swallowed inhaled or absorbed through the skin Avoid breathing dust Causes moderate eye irritation Users should Wash hands before eating drinking chewing gum using tobacco or using the toilet Remove clothing and Personal Protective Equipment (PPE) immediately if pesticide gets inside Then wash thoroughly and put on clean clothing Remove PPE immediately after handling this product Wash the outside of gloves before removing As soon as possible wash thoroughly and change into clean clothing

Personal Protective Equipment (PPE)

Applicators and other handlers including mixers and loaders must wear long sleeved shirt long pants shoes plus socks and chemical resistant gloves Mixers and loaders must also wear a chemical resistant apron Follow manufacturer s instructions for cleaning/maintaining PPE If no such instructions for washables exist use detergent and hot water Keep and wash PPE separately from other laundry

Olvidium, Inc
EPA Reg #
EPA Est 88810 NE-001

First Aid

- If In Eyes** Hold eye open and rinse slowly and gently with water for 15 20 minutes
Remove contact lenses if present after the first 5 minutes then continue rinsing eye
Call a poison control center (1 800 222 1222) or doctor for treatment advice
- If Inhaled** Move person to fresh air
If person is not breathing call 911 or an ambulance then give artificial respiration preferably by mouth to mouth if possible
Call a poison control center or doctor for further treatment advice
- If on skin** Take off contaminated clothing
Rinse skin immediately with plenty of water for 15 20 minutes
Call a poison control center or doctor for treatment advice
- If swallowed** Call a poison control center or doctor immediately for treatment advice
Have person sip a glass of water if able to swallow
Do not induce vomiting unless told to do so by the poison control center (1 800 222 1222) or doctor
Do not give anything by mouth to an unconscious person

Hot Line Number

Have the product container or label with you when calling a poison control center doctor or going for treatment For emergency assistance please call toll free **1-800-222-1222**

Note to Physician

Probable mucosal damage may contraindicate the use of gastric lavage Measures against circulatory shock respiratory depression and convulsions may be needed

Environmental Hazards

For terrestrial uses do not use near a well or where drinking water is stored Do not apply directly to water or to areas where surface water is present or to intertidal areas below the mean high water mark Do not contaminate water when disposing of equipment wash water or rinsate This chemical has properties and characteristics associated with chemicals detected in ground water The use of this chemical in areas where soils are permeable particularly where the water table is shallow may result in ground water contamination

Storage and Disposal

Do not contaminate water food or feed by storage and disposal!

Pesticide Storage Store in a dry place Avoid storage near food or feed products

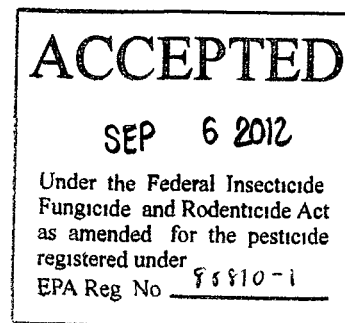
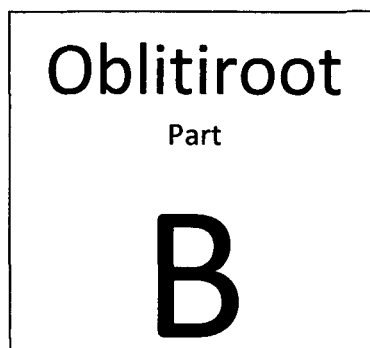
Container Disposal Non refillable container Do not reuse or refill this container

Completely empty container by shaking and tapping the sides and bottom to loosen clinging particles Empty residue from containers into application site Triple rinse with a small amount of water to reduce foaming Pour rinsate from container into application site If empty place in trash or offer for recycling if available

If partially filled call your local solid waste agency for disposal instructions or call 1 800 CLEANUP

NOT FOR USE IN SEPTIC SYSTEMS IN THE STATE OF FLORIDA

11/12



Keep Out of Reach of Children
DANGER

Ingredients

Sulfamic Acid 100%

Directions for Use

User must follow all directions and precautions on master label before use

It is a violation of federal law to use this product in a manner inconsistent with its labeling

For residential 4 x100 long sewer lines (Part B contains 352# solid and Part A contains 1 248# liquid for 1 6# total)

For residential 6 x100 long sewer lines (Part B contains 55# solid and Part A contains 1 85# liquid for 2 4# total)

Residential Application Method for Sewer Lines that have Root Problems

For residential 4 x100 sewer lines use the 1 6# container size

For residential 6 x100 sewer lines use the 2 4# container size

For both Part A and Part B ADD ENTIRE CONTENTS of Part B (solid) to the toilet bowl Then pour entire contents of Part A (liquid) to toilet bowl Flush immediately to avoid foam overflowing bowl Flush a second time to push foam completely into sewer line and a third time if you have a 1 6 gallon low flow toilet Restrict water usage for four to six hours after application

Do not apply through sink or tub

Precautionary Statements

DANGER

Corrosive Causes skin burns Causes irreversible eye damage May be fatal if swallowed, absorbed through the skin or inhaled Do not get in eyes on skin or on clothing Wash thoroughly with soap and water after handling and before eating drinking chewing gum using tobacco or using the toilet Wear protective eyewear such as goggles face shield or glasses Remove and wash contaminated clothing before reuse

Personal Protective Equipment (PPE)

Applicators and other handlers including mixers and loaders must wear long sleeved shirt long pants shoes plus socks and chemical resistant gloves Mixers and loaders must also wear a chemical resistant apron Follow manufacturer's instructions for cleaning/maintaining PPE If no such instructions for washables exist use detergent and hot water Keep and wash PPE separately from other laundry

Olvidium, Inc
EPA Reg #
EPA Est 88810 NE-001

12/12

First Aid

- If In Eyes** Hold eye open and rinse slowly and gently with water for 15 20 minutes
Remove contact lenses if present after the first 5 minutes then continue rinsing eye
Call a poison control center (1 800 222 1222) or doctor for treatment advice
- If Inhaled** Move person to fresh air
If person is not breathing call 911 or an ambulance then give artificial respiration preferably by mouth to mouth if possible
Call a poison control center or doctor for further treatment advice
- If on skin** Take off contaminated clothing
Rinse skin immediately with plenty of water for 15 20 minutes
Call a poison control center or doctor for treatment advice
- If swallowed** Call a poison control center or doctor immediately for treatment advice
Have person sip a glass of water if able to swallow
Do not induce vomiting unless told to do so by the poison control center (1 800 222 1222) or doctor
Do not give anything by mouth to an unconscious person

If household baking soda is available add it to water and drink if Part B is ingested For eye and skin contact apply baking soda to contact sites to neutralize sulfamic acid in Part B

Hot Line Number

Have the product container or label with you when calling a poison control center doctor or going for treatment For emergency assistance please call toll free 1-800-222-1222

Note to Physician

Probable mucosal damage may contraindicate the use of gastric lavage Measures against circulatory shock respiratory depression and convulsions may be needed

Storage and Disposal

Do not contaminate water food or feed by storage and disposal!

Pesticide Storage Store in a dry place Avoid storage near food or feed products

Container Disposal Non refillable container Do not reuse or refill this container

Completely empty container by shaking and tapping the sides and bottom to loosen clinging particles Empty residue from containers into application site Triple rinse with a small amount of water to reduce foaming Pour rinsate from container into application site If empty place in trash or offer for recycling if available

If partially filled call your local solid waste agency for disposal instructions or call 1 800 CLEANUP

NOT FOR USE IN SEPTIC SYSTEMS IN THE STATE OF FLORIDA