



## OFFICE OF CHEMICAL SAFETY AND POLLUTION PREVENTION

WASHINGTON, D.C. 20460

November 19, 2025

SENT BY EMAIL

Jaqueline Stewart (Sumski)  
jsumski@delta-ac.com  
RENTOKIL INITIAL PLC

Subject: Approval of Label Amendment; Only Indicated Changes Reviewed –  
Changes to update the instruction manual (Version 3), Sub-label C of the subject  
product.  
Product Name: RADAR  
EPA Registration Number: 87942-1  
Application Date: March 12, 2025  
Case Number: 651648

Dear Jaqueline Stewart:

The amended label referred to above, submitted in connection with registration under the Federal Insecticide, Fungicide, and Rodenticide Act (FIFRA), as amended, is acceptable. However, EPA reviewed only the label changes highlighted, marked, or otherwise indicated on the submitted label. Any other changes to the previously approved label that were not clearly highlighted, marked, or otherwise indicated in your submission were not reviewed and may form the basis of regulatory and/or enforcement action if later discovered by the Agency. Further, submission of a label amendment application with unidentified changes may be considered a knowing submission of false information to the Agency. This approval does not affect any conditions that were previously imposed on this registration. You continue to be subject to existing conditions on your registration and any deadlines connected with them.

The label submitted with the application has been stamped "Accepted Only Indicated Revisions Reviewed" and is enclosed for your records.

This labeling supersedes all previously accepted labeling. You must submit one copy of the final printed labeling before you release the product for shipment with the new labeling. In accordance with 40 C.F.R. § 152.130(c), you may distribute or sell this product under the previously approved labeling for 18 months from the date of this letter. After 18 months, you may only distribute or sell this product if it bears this new revised labeling or subsequently

approved labeling. "To distribute or sell" is defined under FIFRA section 2(gg) and its implementing regulation at 40 C.F.R. § 152.3.

Should you wish to add/retain a reference to the company's website on your label, then please be aware that the website becomes labeling under FIFRA and is subject to review by the Agency. If the website contains any false or misleading statement, design, or graphic, the product may be misbranded and unlawful to sell or distribute under FIFRA Sections 2(q)(1)(A) and 12(a)(1)(E). 40 C.F.R. § 156.10(a)(5) lists examples of statements EPA may consider false or misleading. In addition, regardless of whether a website is referenced on the product label, claims made as part of the product's sale or distribution may not substantially differ from those claims approved through the registration process under FIFRA Section 12(a)(1)(B). Therefore, should the Agency find or if it is brought to our attention that a website contains false or misleading statements or claims substantially differing from the EPA approved registration, the product will be referred to the EPA's Office of Enforcement and Compliance Assurance.

Your release for shipment of the product constitutes acceptance of these conditions. If these conditions are not complied with, the registration will be subject to cancellation in accordance with FIFRA section 6.

If you have any questions, please contact Ralph Narain at [Narain.Ralph@epa.gov](mailto:Narain.Ralph@epa.gov).

Sincerely



Melissa Bridges, Product Manager 07  
Invertebrate Vertebrate Branch 3  
Registration Division (7505T)

Enclosure: Stamped label

**ACCEPTED**

ONLY INDICATED

REVISIONS REVIEWED

11/19/2025

Under the Federal Insecticide, Fungicide and  
Rodenticide Act as amended, for the pesticide  
registered under EPA Reg. No.

87942-1

No label revisions other than those indicated were  
reported to the Agency.

**Rentokil**

The Experts in Pest Control

**RADAR**

Active ingredient: Carbon dioxide.....100.00%

Total.....100.00%

**KEEP OUT OF REACH OF CHILDREN**

**WARNING**

EPA Est. No: 087942-GBR-001

EPA Reg No: 87942-1

**MADE IN THE  
UNITED KINGDOM**

Manufactured for:

Rentokil North America, Inc.

1125 Berkshire Blvd. Suite 150

Wyomissing, PA 19610

**FIRST AID**

**If inhaled**

Move person to fresh air. If person is not breathing,  
call 911 or an ambulance, then give artificial  
respiration, preferably mouth-to-mouth if possible.  
Call a poison control center or doctor for treatment  
advice.

Have the product container or label with you when calling a poison center, doctor or when seeking  
medical treatment. For emergency information concerning this product, call the National Pesticide  
Information Center at 800-858-7378

**PRECAUTIONARY STATEMENTS**

**HAZARD TO HUMANS AND DOMESTIC ANIMALS**

**WARNING:** May be fatal if inhaled. Do not breathe vapour. Concentrations of >10% carbon dioxide  
can produce unconsciousness or death. High concentrations may cause asphyxiation; symptoms  
include loss of mobility and/or unconsciousness. Wear waterproof gloves when cleaning the unit and  
handling rodent bodies

**DIRECTIONS FOR USE:** It is a violation of Federal Law to use this product in a manner inconsistent  
with its labelling. Read all directions for use carefully before applying. For indoor use only. This  
canister is for use in the RADAR unit, or as part of PestConnect. Canister is designed to drop inside  
the unit – do not use force. Before use, refer to the RADAR booklet for information on how to use the  
RADAR trap, and if necessary, how to use it as part of PestConnect.

This product is suitable for use in food handling and food preparation areas.

**STORAGE AND DISPOSAL**

Do not contaminate water, food or feed by storage and disposal.

**Pesticide Storage:** Store in a cool, dry area in original container away from food. Do not use or  
store near heat or open flame. Exposure to temperatures above 50.0°C (122°F) may cause  
bursting.

**Container Handling:** Contents under pressure. Do not puncture or incinerate! **If empty:** Place in  
trash or offer for recycling, if available. **If partly filled:** Call your local solid waste agency for  
disposal instructions.

MANUFACTURED BY: Rentokil Initial PLC, Liverpool L33 7SR, UK

IMPORTED BY: Target Specialty products, 710 Corporate Center Drive, Berks Corporate Center  
Building 7, Reading, PA 19605, United States, 888-225-6080

For Batch No and Use by date: see canister  
Label No. CLP21-011  
*Canister Label- Small container*

Net weight: 0.1oz (2.8 g) or 0.28oz (8g)  
Carbon Dioxide

RADAR – carbon dioxide 100%  
KEEP OUT OF REACH OF CHILDREN  
WARNING EPA Reg No: 87942-1  
EPA Est. No: 087942-GBR-001  
Read the complete labelling before use

# **RADAR – OPERATOR'S MANUAL**



## OPERATING RADAR

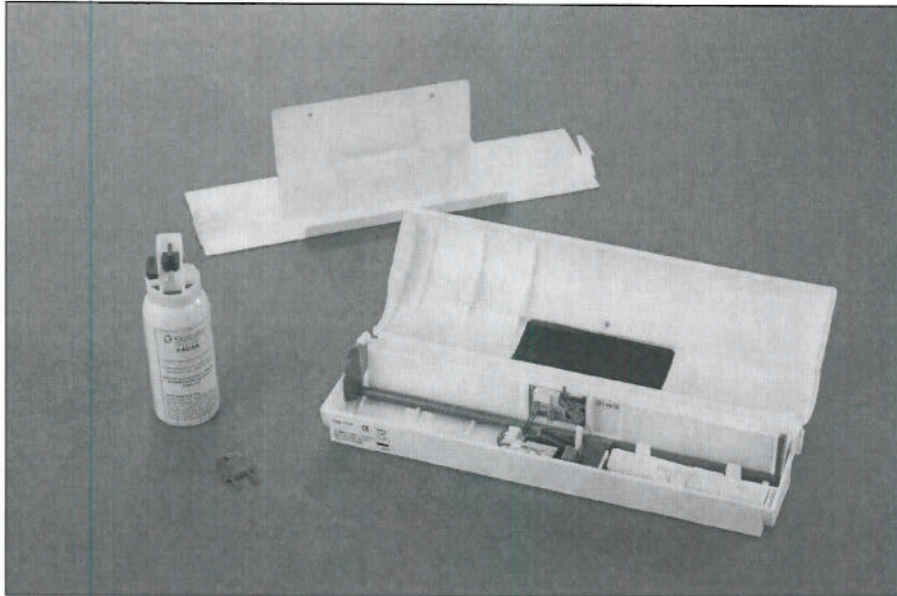
### Contents

|     |                                       |         |
|-----|---------------------------------------|---------|
| 1.  | Receipt of Unit                       | Page 3  |
| 2.  | Location / Installation               | Page 4  |
| 2.1 | Location Parameters                   | Page 4  |
| 3.  | Operating Mouse Radar                 | Page 5  |
| 3.1 | Set up                                | Page 5  |
| 3.2 | Routine Servicing – Inactivated Units | Page 5  |
| 3.3 | Activated Units                       | Page 5  |
| 3.4 | False Activations                     | Page 6  |
| 3.5 | LED Sequences                         | Page 6  |
| 4.  | Maintenance                           | Page 6  |
| 4.1 | Cleaning                              | Page 6  |
| 4.2 | Batteries                             | Page 6  |
| 4.3 | CO <sub>2</sub> Canisters             | Page 7  |
| 5.  | Troubleshooting                       | Page 8  |
| 6.  | Technical Specifications              | Page 9  |
| 7.  | Drawing Views                         | Page 10 |



## 1. Receipt of Unit

Please check that the box contents are present and undamaged:



- FR80 Radar
- FR90 Radar CO<sub>2</sub> Canisters (Tin Plate)
- FR18 Radar Battery Pack
- FR55 Radar Fixing Brackets
- The battery packs and CO<sub>2</sub> canisters should be free from corrosion, dents and within the expiry date.





## 2. Location / Installation



Radar units should be sited along wall / floor junctions, behind machinery and equipment, i.e. anywhere that bait boxes and mouse monitor units (MMU's) would normally be placed. Units should be secured with fixing brackets if possible to prevent the unit being accidentally moved, knocked or removed by unauthorised persons. The unit must be sited where the LED is clearly visible to signal activation.



### 2.1 Location Parameters

This table is a reference point for suitable operating environments for the Radar:

| Environmental Restrictions            | Details   |
|---------------------------------------|---|
| Outdoor use                           | Radar has been specifically designed for indoor applications only. The product is not suitable for outdoor use.   |
| High levels of surface water          | The system electronics can be damaged by water. Take care to locate units away from areas where local high pressure washing or hosing down operations are carried out.                            |
| High levels of dust / grease          | It is important that units are kept clean, especially if installed in areas where high levels of dust or grease are present. Cleaning guidelines must be followed to prevent damage to the units. |
| Knocking / kicking                    | Care must be taken to locate units away from pedestrian traffic to avoid false activation. This can be prevented by mounting units on fixing brackets.  |
| Extreme temperature (<0°C)            | Extremely low temperatures (i.e. unheated warehouses) could affect Radar's performance and may result in the unit entering low battery status mode.   |
| High humidity (> 80%) or condensation | High humidity and / or condensation could result in damage to the unit's control electronics and result in false activations.   |
| High levels of vibration              | High vibration due to localised machinery / fridge compressors etc could affect the performance of the unit and result in false activations.  |





### 3. Operating Mouse Radar

#### 3.1 Set up

- Open the Radar unit using the supplied key. (Figure 1)
- The unit is supplied with the battery fitted.
- Slide circuit board switch to 'ON' – the LED will flash once and then remain illuminated permanently. (Figure 2)
- Pass your finger across the first beam and the LED will flicker repeatedly. (Figure 3)
- Move your finger to the second beam within four seconds – the solenoid will self test to complete check and the unit doors will close.
- 5 seconds after the self test has completed, the LED will flash 5 times to indicate that it is fully armed and that unit is ready for installation.
- Set the trigger by pressing the red door lever down until it is locked under the blue catch. (Figure 4 & 5)
- Remove the blue safety pin from the CO<sub>2</sub> canister and ensure the canister is within its expiry date before installing into the unit. (Figure 6 & 7)
- Locate the canister in position – it should not need forcing. (Figure 8)
- Close the unit securely. (Figure 9)

Note: If the canister resists the fittings, it is likely to be used and in need of disposal



Figure 1



Figure 2



Figure 3



Figure 4

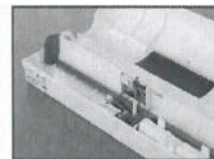


Figure 5



Figure 6



Figure 7

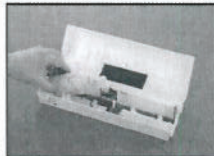


Figure 8



Figure 9

#### 3.2 Routine Servicing – Inactivated Units

- Switch the unit 'OFF' before servicing.
- Remove the CO<sub>2</sub> canister – check the best before date on canister. If within expiry date it maybe reused.
- Remove any external dirt, paying particular attention to any accumulated dirt on the underside of the unit.
- Clean the unit inside out, following the cleaning guidelines. (See Section 7.1)
- Check the operation of the unit, following set up guidelines. (See Section 6.1)

#### 3.3 Activated Units

- Put on protective gloves.
- Open the unit and slide the circuit board switch to 'OFF'.
- Dispose of dead mouse according to your local waste regulations.
- Remove the used CO<sub>2</sub> canister.
- Canisters can only be used once and must not be reused.
- Do not mix the canister with new stock – mark it as used by pressing a dent into the metal and separate for disposal. (Figure 10)
- Clean the inside of the unit following the cleaning guidelines (See Section 7.1)
- Reset the unit, referring to the setup guidelines (See Section 6.1)



### 3.4 False Activations

See Troubleshooting Section (Section 6)

### 3.5 LED Sequences

Radar signals its status via the red light emitting diode (LED) on top of the unit. Once setup the LED will only flash when the unit is activated. The light sequences are as follows:

| LED status                                      | Unit status   |
|---|---|
| Continuous indicator<br>●                       | Switch on / reset   |
| Flickering indicator<br>●                       | Infrared detector functional – during setup / test mode                                   |
| 5 red flashes<br>●●●●●                          | End of test period - unit fully armed   |
| No flashes<br>○                                 | Armed mode<br>(Please note that the Mk I flashes once every 5 seconds when in armed mode) |
| 1 red flash every 4 seconds<br>● / 4 seconds    | Unit activated  |
| 2 red flashes every 4 seconds<br>●● / 4 seconds | Low battery or unit fault<br>(Please note that doors will also close)                     |

## 4. Maintenance

Radar requires no maintenance other than cleaning and management of the batteries and CO<sub>2</sub> canisters.

### 4.1 Cleaning

The recommended cleaning product for Radar is the *Universal Hard Surface Wipes (PSU01)*. These wipes are readily available from Rentokil Initial Supplies.

- Put on some protective gloves.
- Remove the dead mouse and dispose of it in accordance to standard protocol. Remove any external dirt, paying particular attention to any accumulated dirt on the underside of the unit.
- Clean the inside of the unit, cleaning any fur, urine, droppings, etc. (Figure 11)



Figure 11

### 4.2 Batteries

Alkaline batteries can currently be disposed of in accordance with local, national or state regulations, or recycled where such facilities exist. It is recommended that battery packs are replaced every 12 months, irrespective of use, to ensure that they are fit for purpose.



### 4.3 CO<sub>2</sub> Canisters

A new canister (*figure 12*) will need to be inserted every time the Radar unit is activated (please ensure a new canister is within the expiry date). After firing, the red wedge at the neck of the CO<sub>2</sub> canister it is held inside by a ratchet that empties it completely. This ensures that empty canisters cannot be reused by mistake. Empty canisters are not classified as hazardous waste and can therefore be disposed of in accordance with local, national or state regulations, or recycled where such facilities exist. However, full canisters are classified as "Hazardous Pesticide Waste" and therefore **MUST** be discharged prior to disposal. The canisters should be discharged by holding the canister horizontally away from the body and pushing the trigger, thus dispensing the contents. It is recommended that CO<sub>2</sub> canisters are replaced every 12 months, irrespective of use, to ensure that they are fit for purpose.

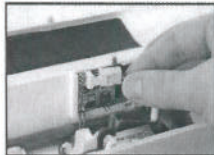



Figure 12





## 5. Troubleshooting

| Issue   | Cause   | Solution  |
|---|---|---|
| The LED does not illuminate when unit switched on         | Insufficient power                                | Change battery  |
|   |   | Check battery connection – please ensure that wires are fed between the door beam and lever to prevent them becoming damaged<br> |
| Doors do not close  | Faulty components                                 | Report back to RIS Kirkby UK  |
|   | Insufficient tension in the springs               | Check the springs are fitted into the grooves at each end of the door arm<br>  |
| Mouse alive in unit                                       | Empty / faulty CO <sub>2</sub> canister           | Replace the unit if damaged by the mouse or reset the unit with a new CO <sub>2</sub> canister  |
| Unit is immediately activating when the unit is turned on | Infrared detectors are detecting foreign material | Wipe Infrared emitters and detectors clean with a recommended cleaning wipe   |
| LED flashing once every 4 seconds                         | Unit activated                                    | Follow servicing guidelines   |
| LED flashing twice every 4 seconds                        | Low battery                                       | Change the battery  |
|   | Unit fault  | If battery change does not rectify the issue, return to RIS   |

Any other faults:

- If in any doubt, DO NOT USE the unit – return to RIS for fault evaluation.

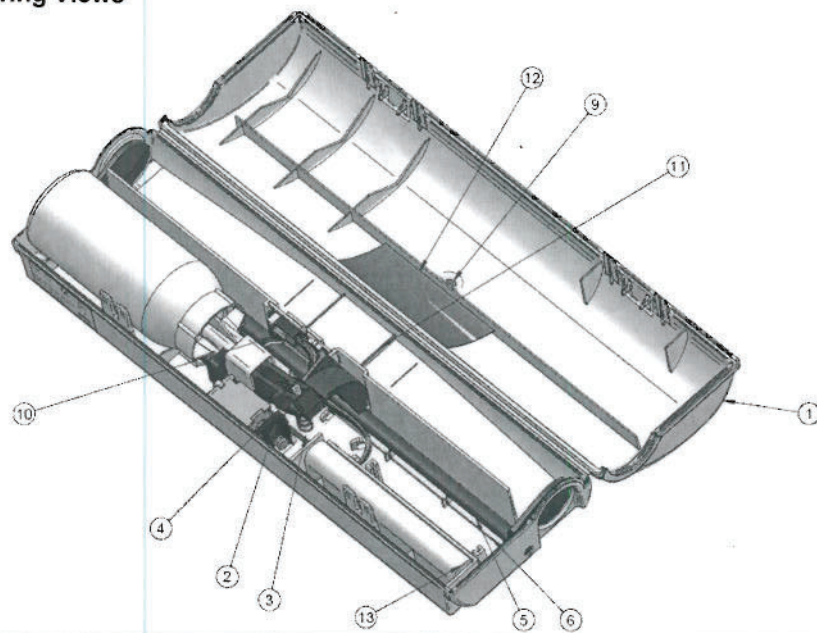


## 6. Technical Specifications

| Technical Specifications  |  |
|---------------------------|--|
| Dimensions (L * D * H)    | 308mm x 196mm x 60mm   |
| Weight (kg)               | 415g (including full gas canister)   |
| Material                  | White Polypropylene casing   |
| Detection system          | Pulsed, reflective dual Infrared beam sensors  |
| Rodenticide               | 0.1 ounces (2.8 grams) CO <sub>2</sub> , gas purity >99.9%, canister is a tin plate construction |
| Consumables               | Battery pack, CO <sub>2</sub> canister (please ensure these are within the expiry date)          |
| Power supply              | 6V – 4 x AA cell Alkaline battery pack   |
| Degree of protection (IP) | IP 21 (drip proof)   |
| Set up time               | 5 seconds  |
| Guarantee                 | 2 years, return to RIS   |



## 7. Drawing Views



| Item Number | Component Name                         |
|-------------|--|
| 1           | Main case moulding                     |
| 2           | Trigger                                |
| 3           | Level spring                           |
| 4           | Lever                                  |
| 5           | Door beam                              |
| 6           | Door beam spring                       |
| 9           | Lens                                   |
| 10          | Printed circuit board assembly         |
| 11          | Pressure pad recess blanking plate     |
| 12          | Sensor label – DO NOT REMOVE           |
| 13          | 6V – 4 x AA cell Alkaline battery pack |





# Rentokil

## PestConnect

### INSTRUCTION MANUAL



Instruction manual PestConnect / 2012 Version 1.0\_USA

All rights reserved. No part of this document may be reproduced, stored in a database or any other retrieval system, or published, in any form or in any way, electronically, mechanically, digitally per photo print or microfilm or any other way without written permission from the author.

**NOT FOR EXTERNAL CIRCULATION**

## Contents

|          |   |                              |
|----------|---|------------------------------|
| <b>1</b> | <b>Introduction:</b> .....                      | Error! Bookmark not defined. |
| <b>2</b> | <b>How Pest Connect Works:</b> .....            | <b>3</b>                     |
| <b>3</b> | <b>Benefits of PestConnect</b> .....            | <b>4</b>                     |
| <b>4</b> | <b>System Overview</b> .....                    | <b>5</b>                     |
|          | 4.1 Sensors.....                                | 5                            |
|          | 4.2 Repeaters.....                              | 5                            |
|          | 4.3 Control Panel.....                          | 6                            |
| <b>5</b> | <b>Installation</b> .....                       | <b>7</b>                     |
|          | 5.1 Step 1 – Setting up the Control Panel ..... | 7                            |
|          | 5.2 Step 2 – Locating the Control Panel .....   | 8                            |
|          | 5.3 Step 3 – Surveying the site.....            | 9                            |
|          | 5.4 Step 4 – Deploying the sensors.....         | 10                           |
|          | 5.5 Some things to be aware of .....            | 10                           |
| <b>6</b> | <b>Using the System</b> .....                   | <b>11</b>                    |
| <b>7</b> | <b>Specifications</b> .....                     | <b>12</b>                    |
| <b>8</b> | <b>Troubleshooting</b> .....                    | <b>13</b>                    |
|          | 8.1 Connection to the server.....               | 13                           |
|          | 8.2 Connection to the Control Panel.....        | 14                           |

## 1. Introduction

PestConnect is an innovative system providing remote monitoring and continuous protection against mice 24/7, 365 days a year. The system has been designed for use in high risk areas, such as food processing plants and pharmaceutical manufacturing where there is zero pest tolerance or conventional baiting is not allowed.



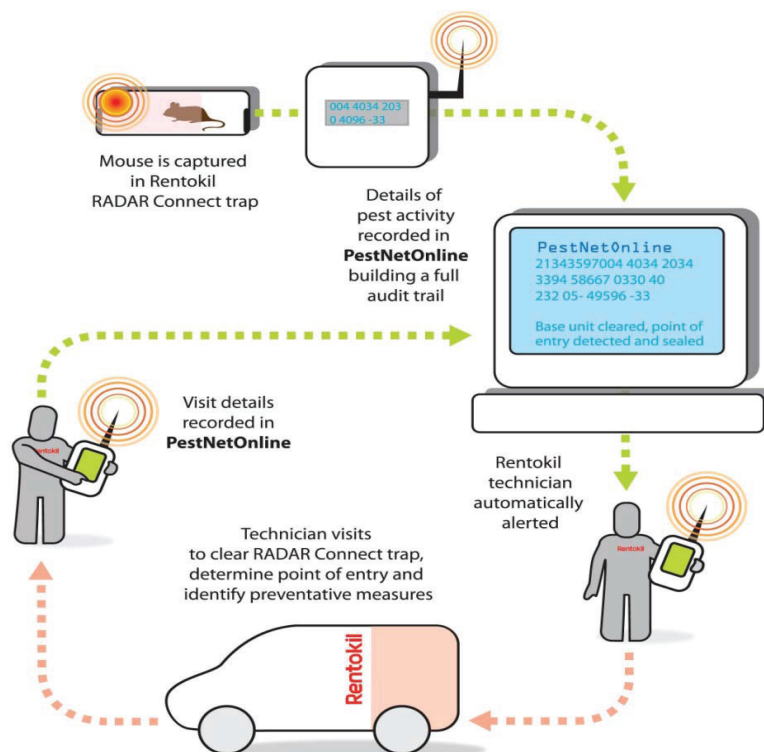
Using Rentokil's Innovative Radar unit, intruding mice are captured as soon as they are detected, immediately reducing the risk to the customer. They are then killed by concentrated release of carbon dioxide (CO<sub>2</sub>) into the air tight unit. CO<sub>2</sub> is capable of killing mice extremely rapidly and is widely recognised as a humane method of control. The mouse is unconscious within 15-20 seconds and fatal levels are reached within 45 seconds of the unit's activation.

Pest Connect can also be used with Rentokil's Mouse Monitor Unit, which provides early detection of mice activity. The unit will identify the time in days or weeks since the unit was last activated through a series of audible bleeps.

Through, PestNetOnline (PNOL), details of pest activity is recorded, building a full audit trail. Rentokil's PNOL is a unique on-line pest control reporting system designed and built by Rentokil and provides 24/7 access. The system send an automatic alert to the customer and local Rentokil Technician should there be any pest activity reported. The Rentokil Technician visits the customer premise's to clear the RADAR Connect trap and determines any point of entry to identify future preventative measures. All visit details are recorded on PestNetOnline.



## 2. How Pest Connect Works



### **3. Benefits of PestConnect**

- Continuous protection – 24/7 protection against mice intrusions, minimising risk with instant alert.
- Effective & immediate treatment – Captures, humanely kills and contains mice reducing any risk of contamination.
- Real-time reporting – Easy-to-access, real-time data provides immediate status of incident online or via SMS or email.
- Highly reliable – Self monitoring; gives advance warning of any issues such as low battery that could cause any potential data loss.
- Improved audit compliance – Viewed in conjunction with other pest control information on PNOL, provides additional assurance to third party auditors.
- Complete records – Data transmitted from site sent on PNOL recording all activity including historical data.
- Universal Power Supply – Uses 2.4 GHz radio modules allowing for a global solution.
- Self configuring radio system – optimises radio routes and self heals, providing good reliability. Stock movements on site do not break the systems communication capability with the control panel.
- Expandable system – additional units or new products can be easily added.
- Control Pane Display – Shows information on number of devices connected on site and details all data queued and sent to the Rentokil server.

## 4. System Overview:

The on-site PestConnect has three principal components

- Sensors (Radar Connect and MMU Connect)
- Repeaters
- Control Panel

### 4.1 Sensors

The Radar and Mouse Monitor Unit (MMU) sensors are enabled to work with PestConnect. The overall exterior design and concept of the unit is the same except a logo to indicate that they are PestConnect units. The sensors monitor for mice and depending on the device either report activity levels (MMU) or report a catch and kill activation (Radar).

When activity has been detected a report is immediately sent through to the Control Panel. When there is no activity the Sensors communicate hourly to the local Control Panel to indicate current status and verify they are still active. This allows monitoring of other parameters, such as battery levels and communication signal strengths. All Sensors are uniquely identifiable world-wide



### 4.2 Repeater

The Repeaters extend the range of the system so that radio data from Sensors located over a wide area can still get to the Control Panel (*see below for information on the Control Panel*). Multiple Repeaters can be used to route the data through to the Panel, allowing a very large area to be covered by a single Control Panel.

The Repeaters are AC powered, via a low voltage adaptor, and therefore require an AC power outlet to be available in the desired location.



### 4.3 Control Panel



The control panel is the hub of the on-site installed system as all the data from the sensors (including those sent via the repeaters) is collected here. The Control Panel passes the information onto Rentokil's system servers using mobile data technology. Every significant event is communicated to the servers, together with hourly 'health check' reports, and daily sensor reports. The Control Panel also monitors for devices which fail to make contact for a significant time and reports these to the Rentokil servers to enable further action to be taken.

The Control Panel display shows a number of useful areas of information that show the current status of the system. These are useful for providing confidence that all devices are connected and can aid limited diagnostics onsite. The parameters displayed are shown below:





## 5. Installation

PestConnect has been designed to make installation simple and efficient. The initial site survey should be detailed to ensure the effectiveness and speed of the final installation.

### 5.1 Step 1: - Setting up the Control Panel

It is important that the Control Panel is set up in a location that is close to the sensors, but should also allow good mobile signal strength as shown on the display. Good locations are normally on a wall, above head height and at least 1m away from other radio equipment (eg Wi-Fi routers). It is imperative that the Control Panel is positioned horizontally, with the writing the correct way up; failure to do so will result in reduced performance.



Having chosen a suitable location, the Control Panel should be unpacked and the following steps taken.

1. Insert your SIM card into the slot provided on the top of the Control Panel (on the side for the North American Version). The SIM card should be inserted with the gold contacts facing the front of the Control Panel, and with the cut-off corner outermost, see diagram below.



Once you have inserted the SIM you should fit the label provided along the top of the case. The hole in the sticker should line up with the DC power inlet. The sticker will also cover the SIM slot to deter unauthorised removal.



2. Screw the short antenna onto the threaded connector on the side of the Control Panel. The antenna should then be bent at the joint and rotated so that it points upwards. (Note: for the North American version of the Control Panel, the antenna connector is located on the top and the antenna should be kept straight, so that it points up.)
3. The power adaptor supplied comes with a range of options for different country specific power supply outlets. Select the connector style that suits your outlets and then slide back the sprung retaining clip on the adaptor, remove the plastic protection piece and then insert your connector.
4. The power adaptor can now be connected.

## **5.2 Step 2: - Locating the Control Panel**

Before fixing the Control Panel to the wall it is important to verify that the location has suitable mobile network coverage. Power up the unit and then temporarily place (or hold) the Panel in the desired location.

When you first power up the unit you will see that the time in the bottom left of the display is 00:00. Within 5 minutes you should see the time updated to show the correct time (Note: This is the server time, which will not necessarily be the same as local time). This means that the Control Panel has successfully made contact with the Rentokil server. You should also note the reception strength bars on the bottom right of the display; this should show 3 or more bars. If it doesn't update the time or shows less than 3 bars then you should investigate alternative locations for the Panel.

There are a number of error messages that can be displayed when the panel is first connecting to the server, this often occurs when a Control Panel is connecting via a new network, the Panel will continue to try to connect, so these messages may clear after a short while. If they are still showing after 10 minutes then you should restart the Panel. If the messages continue to show for 5 minutes a second time, then you should refer to your PestConnect system contact.

Having successfully selected a location and proved that the signal is good you can now mount it to the wall and then power it up. Once the time has updated you are ready to proceed with the installation.

### 5.3 Step 3: - Surveying the Site

The next step is to survey the site, which will also involve deploying repeaters as you go. You will also need a PestConnect sensor for the surveying process, a Mouse Radar Connect or MMU Connect is ideal for this.

1. Standing next to the Control Panel, turn on the device. The LED will light Red. Now wait for 10 seconds, after which the LED will turn Yellow. This indicates that the unit is ready to be put into installation mode.
2. Next pass your fingers through the sensor path to set the unit. The LED will now flash alternately Green and Red for a few seconds while it finds the Control Panel. The sensor will then enter a 5 minute scan mode, where it will send out messages and look for responses. For each correct response it receives it will flash Green (up to 5 rapid flashes), if no response is received (ie out of range) then it will flash Red. If the sensor times out, you can restart it as described above.
3. Once this is complete, you can now begin to move around the site to determine the coverage from the Control Panel. Try the sensor (Radar / MMU) in the likely positions, against walls, behind equipment etc. If you have an area where you will need to place sensors, but is out of range (test sensor flashes Red) then you should use a Repeater unit. Locate a suitable AC powered outlet near the edge of the Control Panel range and plug in a Repeater, using the supplied adaptor (fit a suitable connector to the adaptor as you did with the Control Panel supply).
4. Do not fix the repeater to the wall at first. Hold in a position on a wall above head height (a range of 7ft to 12ft up the wall is good). As with the Control Panel, the Repeater should be positioned with the writing the correct way up. When a Repeater is first turned on it will automatically go into test mode for 2 minutes, where it will flash Green or Red to display any connections it can make. If your Repeater is in range of the Control Panel (or another Repeater) then it will flash Green. After 2 minutes it will flash Green 5 times and then the LED will be off. It is best not to fit the Repeater to the wall at the stage it at all possible as you may find further surveying shows gaps in the coverage.
5. Once the Repeater is installed and its 2 minute test period is complete, you can continue with the surveying process. Note that the Repeater will not relay messages until the 2 minute test period is complete. In areas where the test sensor gets responses from both the Control Panel and a Repeater it will double flash green. Check that the coverage is continuous, especially towards the edges of the area.
6. You should continue with the surveying process, deploying more Repeaters as required, until the whole of the desired area is covered. You should then permanently fix all the Repeaters to the walls.

## **5.4 Step 4: - Deploying the Sensors**

In this stage of the installation the sensors are positioned in their desired locations. It is best to do this using the special test mode, as described above, by waiting for 10 seconds and the LED to go Yellow before completing the standard unit test of passing your hand in front of the sensors. The Sensor will automatically arm after the 5 minute test, so you can set and close the Sensor and place it in position, noting that the LED is still flashing Green. By taking the above approach you can be confident that each unit is deployed in a location that has radio coverage. The system will only allow green flash indications if the signal strength between the detector and the repeaters / control panel is above defined thresholds – this ensures continuity of service during stock movements etc.

Continue around the site until all sensors have been set and positioned.

Finally, 5 minutes after you have set the last sensor you should be able to check the Control Panel to see that the number of connected devices in the top right shows the number of units used on the site (including repeaters). You should also see that a number of messages have been sent.

The system is now installed and active.

## **5.5 Some things to be aware of**

- Repeaters need to offer good coverage of the desired area. The system will automatically send data through the best available route on connection, but will try to find alternative routes if the initial route fails. A greater Repeater density helps to support this, but system structure will be very different from site to site.
- It is important to recognise that in a linear chain of repeaters the system is only as good as the weakest link. One badly positioned Repeater can cause the loss of connection of all Sensors and Repeaters beyond it, so it is important to position the repeaters in locations that provide a good radio signal. Square sites tend to naturally provide multiple routes, whereas long, thin sites will require more care to ensure that there are no weak points in the system.
- The loss of connection to the radio system will cause Sensors to retry the connection and attempt to make a new one if it can. If connection continues to be unsuccessful the software automatically increases the time between attempts to conserve battery life. However, it should be noted that a Sensor placed in a location where radio coverage is patchy, or is connected to a chain of Repeaters that has an unreliable link, the battery usage will increase. For normal usage the power consumption of the detector units is comparable to the standard Radar and MMU products – therefore the recommendation is to replace all PestConnect installation detector batteries at 12 monthly intervals (all at the same time) to maximise the installed system performance.

There are some system limitations that should be kept in mind, although typically should only occur in very large systems:

- The maximum number of units that can be connected to a Control Panel is 500 (including repeaters).
- The maximum number of Repeaters than can be used in a single system is 64.
- The maximum number of Repeaters used in a row is 16 (ie the data from a sensor can only pass through 16 Repeaters before it gets to the Control Panel).

## **6. Using the System**

PestConnect system has been designed to require minimum on site time. Once the system has been installed the Control Panel display gives basic information on the current status.

If a Sensor is triggered it will send information to the Control Panel immediately, which will send that information on to the Rentokil Server within 60 seconds. The server will then trigger necessary actions and back office systems as well as updating PestNetOnline, iCABS and Pestrack reports. Site maintenance activities can be prioritised to direct technicians to areas that require their attention.

For operational speed, the Sensors do not need to be put into the test mode when reset; they can be set in the same way as the non-PestConnect units and keeping day to day operation simple.

The PestNetOnline system allows trigger levels to be set, so that the response can be based on risk. The PestConnect enabled Mouse Monitor Unit thresholds are no longer limited to single Sensor, and can now be implemented across multiple Sensors to achieve Zone level monitoring through PestNetOnline, offering a more holistic approach to Pest Activity Monitoring.

Additionally, the information provided from site to PNOL includes real-time information about battery voltage levels in each detector and the transmission signal strengths between detectors, repeaters and the central control panel.

Low battery conditions on Radar connect detectors can be effectively managed by automatic closure of the unit and Technician alert if required when the battery power is below a low level threshold set in the server.

## 7. Specifications

| Control Panel Technical Specifications |  |
|--|--|
| Dimensions                             | 150mm x 88mm x 47mm                    |
| Weight (kg)                            | 265g                                   |
| Power Supply                           | 5VDC input voltage                     |
| Material                               | Grey Polypropylene Enclosure           |
| Degree of Protection                   | IP21 (drip proof)                      |
| Compliance                             | Conforms to and tested to CE approvals |

| Repeater Technical Specifications |  |
|-----------------------------------|--|
| Dimensions                        | 54mm x 88mm x 41mm                     |
| Weight (kg)                       | 84g                                    |
| Power Supply                      | 5VDC input voltage                     |
| Material                          | Grey Polypropylene Enclosure           |
| Degree of Protection              | IP21 (drip proof)                      |
| Compliance                        | Conforms to and tested to CE approvals |

| Radio System Specifications |   |
|-----------------------------|---|
| Location                    | All PestConnect Units   |
| Module                      | IEEE Std. 802.15.4 Compliant RF Transceiver                                       |
| Module Certification        | Radio Regulation Certified for United States (FCC), Canada (IC) and Europe (ETSI) |
| Frequency                   | ISM Band 2.405-2.475 GHZ  |
| Output Power                | +10dBm  |

| Mobile Data System Specifications |  |
|-----------------------------------|--|
| Location                          | Control Panel Only   |
| Module                            | Motorola M2M Quad Band GPRS Module                                 |
| Module Certification              | FCC, IC, R&TTE/CE Approvals  |
| Supported Bands                   | 850/900/1800/1900 MHz  |
| Transmit Power                    | 850/ 900 MHz – Class 4 (2 Watt)<br>1800/1900 MHz – Class 1 (1Watt) |

| Power Supply Specifications |   |
|-----------------------------|---|
| Devices                     | Used for Control Panel and Repeater               |
| EMI Standards               | FCC PART15 CLASS B, EN55022 CLASS B, VCC CLASS II |
| Safety Approved             | UL/CUL, GS, CE & RoHs Compliant                   |
| Input Voltage               | 90-264VAC   |
| Input Voltage Freq.         | 47 to 63 Hz                                       |
| Output Voltage              | 5VDC  |
| Current (Max)               | 2.6A  |

| Radar Specifications |                                    |
|----------------------|------------------------------------|
| Dimensions           | 308mm x 196mm x 60mm               |
| Weight (kg)          | 415g (including full gas canister) |
| Power Supply         | 6v 4xAA cell Alkaline battery pack |
| Material             | White Polypropylene casing         |
| Degree of Protection | IP21 (drip proof)                  |

| MMU Specifications |                                      |
|--------------------|--------------------------------------|
| Dimensions         | 125mm x 72mm x 44mm                  |
| Weight (kg)        | 85g (including battery pack)         |
| Power Supply       | 4.5V 3xAA cell Alkaline battery pack |



|                      |                            |
|----------------------|----------------------------|
| Material             | White Polypropylene casing |
| Degree of Protection | IP21 (drip proof)          |

## 8. Troubleshooting

If you are having trouble with setting up the system some of the following points may help.

### 8.1 Connection to the server

Normally the Control Panel will connect to the server within 2 minutes, however sometimes it can take longer, especially for a new SIM card. You should wait at least 5 minutes for connection (10 minutes for a new card). If the Control Panel hasn't connected by this time, then it is likely there is a problem.

The Control Panel will try to help identify problems and show error messages to guide you. Here is a list of messages and their meaning and possible cause.

| Message     | Meaning   | Possible Cause   |
|-------------|---|--|
| No SIM card | Control Panel cannot identify the SIM                                     | <ul style="list-style-type: none"> <li>SIM inserted wrong way round or upside-down – check and re-insert.</li> <li>SIM contacts dirty – try cleaning with eraser</li> <li>SIM faulty – try SIM in another communication device to see if it works.</li> </ul>  |
| No Signal   | The modem cannot detect a signal from the mobile network                  | <ul style="list-style-type: none"> <li>Antenna not fitted, or not screwed on fully.</li> <li>Control Panel location does not have sufficient mobile network reception – try alternative locations (check other communication devices on the same network to see if they show signal)</li> <li>Mobile network isn't working – try mobile phone on the same network to check this.</li> <li>Faulty Antenna – try another antenna if you have one.</li> </ul> |
| GPRS Fail   | The modem can detect a network, but cannot connect to it                  | <ul style="list-style-type: none"> <li>Network Problem - The Control Panel will automatically try to connect again. If this is still a problem after 5 minutes then try restarting the Control Panel.</li> <li>SIM not authorised for data access – verify that the SIM has been enabled by the network provider. – You could try the SIM in another communications device and try connecting to the internet to prove data is enabled.</li> </ul>         |
| Modem Fail  | The Control Panel software is getting no response from the internal modem | <ul style="list-style-type: none"> <li>Modem fault – The Control Panel will automatically restart the modem showing the message Restart Modem, if this fails you can try restarting the Control Panel.</li> </ul>  |

## 8.2 Connection to the Control Panel

Problems with connection to the Control Panel from Repeaters and Sensors are very rare. Connection issues are typically only related to low signal strength caused by obstructions in the Radio path.

It is useful for the installer to understand the type of obstructions that can cause issues, although radio waves are very complex and sometimes work contrary to initial expectations, so the best method is to try it out.

### Example 1- Warehouse fitted with linear racking

In a warehouse with rows of racking it is expected that radio communication will be better along the length of the rows and worse going across the rows (ie through many sets of racking). This is not to say that the signal cannot go across racking, but that the connection distances achieved going across are reduced compared to those along the length.

This is a useful observation to consider when placing repeaters. A system in a 45m x 150m warehouse, with racking consisting of 6 central rows of racking along the full length, showed that signals could pass through the racking with repeater distances of about 70m. However these signals were relatively low and were susceptible to stock movement.

A second arrangement which allowed signals to pass up each side to an end point showed much higher signal levels, but also allowed for redundant paths in the system, increasing overall reliability.

### Example 2 – Warehouse area with large, closely stocked produce containers

Radio frequencies can easily be absorbed by buildings and stock, so it is worth considering this when installing the system. In particular, large, densely stored containers of produce (especially fine product such as grain or nuts) can reduce signals very quickly if you try to go through them.

In a warehouse with very dense storage, positioning repeaters such that they can communicate along access routes and gangways will often help, because the signals are going around or along the stock rather than through it.

On a site with 2m tall bags of nuts placed 2 or 3m deep it was difficult to get a signal through, directly to the sensors needed in that area. By locating a repeater at the end of the rows, and then another halfway down, it was possible to provide enough coverage to the sensors in that area.

Finally be aware of empty racking when installing the system. What is empty today might not be tomorrow! This is where the technician's knowledge of the site can be very useful.

### Example 3 – Metalwork

Metal reflects radio signals, so often helps bounce the radio waves around. However, radio signal doesn't easily pass through metal especially if the metal is continuous.

A chilled storage area on one site showed much lower signal levels, because the foil coated insulation reduced the signal significantly, compared to those even just outside the room. The solution here was to put a repeater directly outside the chilled area, where there was good signal, and this boosted the levels

enough to cover the sensors inside. In an extremely bad situation it would be possible to put a repeater both inside and outside the room.

Fixing PestConnect units to metalwork, electrical conduit or cable tray can reduce effectiveness of the system, so should be avoided if possible; ideally units should be at least 20cm clear of such objects.

It is also worth noting that when the radio signal bounces around it causes the signal level to vary, because of the way the various radio waves are combined. This means that there can be a big difference in signal strength even within a few centimetres. If the signal level appears to be bad, it is worth moving the Sensor or Repeater a few centimetres to see if this helps.

**Example 4 – Adjacent systems**

Multiple Pestconnect systems will work perfectly well next to each other, and it is possible for many systems to be present on a single site. In many instances it can lead to a more robust system. However, the connection route becomes less and less predictable the more Control Panels and Repeaters there are on a site.

It is important to remember that radio waves do not respect building boundaries. Just because a system is all set up in one building won't mean that it will connect that way. An example of this can be where the end sensors of two systems in separate buildings end up very close to one another. This can then provide a link between the units in both building.

Equally the units don't have to be physically close. A Repeater installed at the edge on a warehouse could quite likely find a better signal strength from a Repeater in a building 70m away across an open courtyard or car park than it can get from the Repeater on 40m away the other side of several rows of fully stocked racking.

Fortunately this doesn't matter, because each sensor is uniquely identifiable and registered to its location, so its data will correctly appear in the server, no matter which route or Control Panel it used to do this.

What will be noticeable will be the time it takes to scan for the best route (as it has more options to choose from) and because of this, marginally reduced battery life.

**8.3 Points to note**

The following are other issues that you might come across once the system is installed.

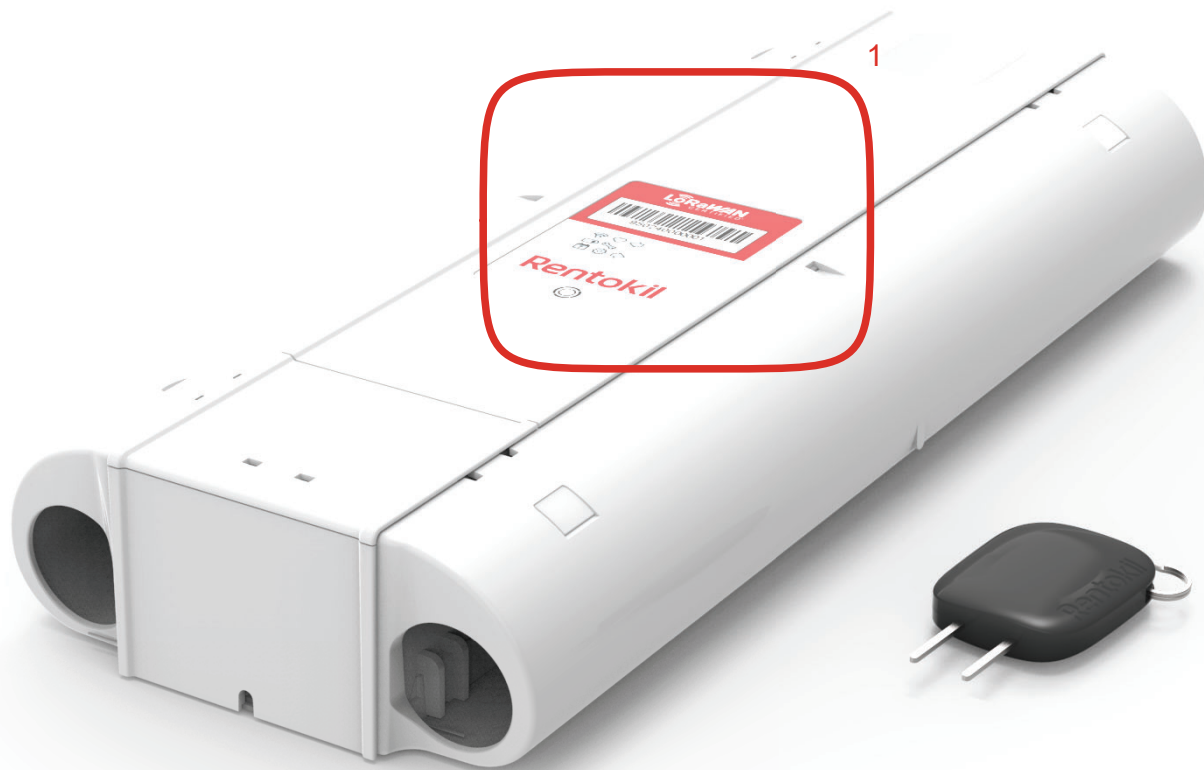
| Situation   | Possible Cause   |
|---|--|
| Sudden reports regarding multiple missing sensors   | <ul style="list-style-type: none"> <li>• The loss of many sensors normally indicates a more significant event on site. Typically the loss of one or more repeaters will cause a number of sensors to go missing.</li> <li>• Some sort of loss of power is often to blame for this. Either power outage, site maintenance work, or simply someone unplugging the repeater.</li> </ul>   |
| Repeated reports regarding multiple missing sensors | <ul style="list-style-type: none"> <li>• If no power outage can be confirmed and it happens on more than one occasion it could be due to a weak link between repeaters or between repeater and the Control Panel.</li> <li>• An onsite check can be performed using a sensor in radio test mode to verify the coverage. This might help identify where the signal is going missing.</li> <li>• Analysing a site plan can also help identify patterns of sensors reported missing.</li> <li>• If the problem persists ask the PestConnect support team for assistance.</li> </ul> |
| Control Panel Fault                                 | <ul style="list-style-type: none"> <li>• If you suspect there is a problem with the Control Panel, please take a picture of the display. If this is not possible note down the exact contents of the display before repowering the Control Panel.</li> <li>• This information should be sent to the PestConnect support Team, together with any further information to help identify any issues.</li> </ul>  |

## 8.4 Sensor LEDs

The Sensors and Repeaters convey a lot of information with a single LED. The following is a quick guide to what all the flashing means.

| LED  | Meaning  | Notes   |
|--|--|---|
| Static Red<br>(Sensors only)                   | Awaiting Technician Test<br>(will start in normally)         | <ul style="list-style-type: none"> <li>Occurs after first turning on the device</li> <li>Waiting for the sensors to be tested</li> <li>Once technician test is complete, sensor will start normally (in sensing mode)</li> <li>Times out after 10seconds</li> </ul>                 |
| Static Yellow<br>(Sensors Only)                | Awaiting Technician Test,<br>(will start in radio test mode) | <ul style="list-style-type: none"> <li>Occurs after 10seconds in Static Red</li> <li>Waiting for sensors to be tested</li> <li>Once technician test is complete sensor will start in radio test mode.</li> <li>Times out after 20seconds (will power down at this point)</li> </ul> |
| Rapid flashing Red (sensors only)              | Sensing first sensor in technician test mode                 | <ul style="list-style-type: none"> <li>Occurs when one sensor is obstructed in Technician test mode (obscuring second sensor triggers trap)</li> </ul>  |
| Alternate Green and Red                        | Scanning for Repeaters                                       | <ul style="list-style-type: none"> <li>Unit is scanning to find PestConnect Repeaters and Control Panels and comparing signal strengths to select the best route</li> </ul>   |
| Flashing Green (2 second interval)             | Test Mode: within radio range                                | <ul style="list-style-type: none"> <li>Will flash rapidly 1-5 times at 2 second intervals</li> <li>Number of flashes indicates the number of valid devices that can receive its signal (displays up to a max of 5 flashes)</li> </ul>   |
| Flashing Red (2 second interval)               | Test Mode: not in radio range                                | <ul style="list-style-type: none"> <li>Brief flash at 2 second intervals</li> </ul>   |
| 5 even Green flashes                           | Making final connection to Control Panel/Repeater            | <ul style="list-style-type: none"> <li>Occurs either after scanning or after test mode</li> <li>Indicates it is about to arm, and has connection through to a Control Panel</li> </ul>  |
| 5 even Red flashes                             | Unable to make final connection to Control Panel             | <ul style="list-style-type: none"> <li>Occurs either after scanning or after test mode.</li> <li>Indicates it has been unable to make a connection. It will retry automatically</li> </ul>  |
| Single brief Green flash                       | Successful Message Transmit                                  | <ul style="list-style-type: none"> <li>Indicates confirmation of message receive from Control Panel</li> </ul>  |
| Single brief Red flash                         | Unsuccessful Message Transmit                                | <ul style="list-style-type: none"> <li>Indicates no confirmation of message receive from Control Panel</li> </ul>   |
| Single brief Yellow flash                      | Unsuccessful Message Retry                                   | <ul style="list-style-type: none"> <li>Indicates unsuccessful retry with no confirmation from Control Panel</li> </ul>  |
| Red flash (5second interval)<br>(Sensors Only) | Remote Deactivation  | <ul style="list-style-type: none"> <li>Sensor has been remotely deactivated by the server. (eg low Battery, unit fault)</li> <li>Consult PNOL for further information</li> </ul>  |

# Rentokil



## RADAR X Manual

Applicable to **LoRaWAN® Connect & Standard Variants**

This manual is based on the latest information and is provided subject to alteration. We reserve the right to change the construction and/or configuration of the product and versions at any time without obligation.

All rights reserved. No part of this document may be reproduced, stored in a database or any other retrieval system, or published, in any form or way, electronically, mechanically, digitally per photo print or microfilm or any other way without written permission from the author.

LoRaWAN® is a mark used under license from the LoRa Alliance®.



# Contents

## Introduction

|  |    |
|--|----|
| ◦ Safety Instruction                               | 4  |
| ◦ Attention  | 5  |
| ◦ Warning  | 5  |
| ◦ Warning Translations                             | 6  |
| ◦ Product Description                              | 9  |
| ◦ Product Function (LoRaWAN® Connect Variant only) | 9  |
| ◦ Warranty and Disclaimer Statements               | 10 |
| ◦ Product Disposal                                 | 10 |
| ◦ Limitations                                      | 11 |
| ◦ Product Range                                    | 12 |

## Installation

|   |    |
|---|----|
| 1. Prior to RADAR X Installation                      | 13 |
| 2. Site Installation                                  | 13 |
| 3. Fitting the Battery                                | 13 |
| 4. Battery Level                                      | 15 |
| 5. Open Catch Tray                                    | 15 |
| 6. Setting the Trap Doors                             | 15 |
| 7. Setting the Trigger Mechanism                      | 15 |
| 8. Fitting CO <sub>2</sub> Canister                   | 16 |
| 9. Refitting the Catch Tray                           | 16 |
| 10. Arming the Module (Standard Variant only)         | 16 |
| 11. Arming the Module (LoRaWAN® Connect Variant only) | 17 |

## Servicing & Maintenance

|   |    |
|---|----|
| 1. Status Check   | 18 |
| 2. Enter Service Mode                                   | 19 |
| 3. Within Service Mode                                  | 20 |
| 4. Cleaning   | 20 |
| 5. Setting the Trap                                     | 20 |
| 6. Removing a used CO <sub>2</sub> Canister             | 21 |
| 7. Fitting a new CO <sub>2</sub> Canister               | 21 |
| 8. Refitting the Catch Tray                             | 22 |
| 9. Reactivate the Trap (Standard Variant only)          | 22 |
| 10. Reactivate the Trap (LoRaWAN® Connect Variant only) | 22 |

## How to Swap Trays

|                                  |    |
|----------------------------------|----|
| 1. Open Catch Tray               | 23 |
| 2. Remove and Replace Catch Tray | 23 |
| 3. Close and Lock the Catch Tray | 23 |

# Contents

9

## How to Swap Sensor Pods

|    |                               |    |
|----|-------------------------------|----|
| 1. | Remove Battery                | 24 |
| 2. | Open Catch Tray               | 24 |
| 3. | Remove Mouse Sensor Pod       | 24 |
| 4. | Replace Mouse Sensor Pod      | 25 |
| 5. | Close and Lock the Catch Tray | 25 |
| 6. | Reactivate the Trap           | 25 |

## System Information

|   |                          |    |
|---|--------------------------|----|
| ◦ | Enter System Information | 27 |
|---|--------------------------|----|

## Operating the UI

|   |                              |    |
|---|------------------------------|----|
| ◦ | Operating the User Interface | 29 |
| ◦ | Error Codes                  | 31 |
| ◦ | Error Code Details           | 32 |

## Advanced Diagnostic Mode

|   |                               |    |
|---|-------------------------------|----|
| ◦ | LED Test                      | 36 |
| ◦ | Motor Test                    | 37 |
| ◦ | Temperature Test              | 38 |
| ◦ | Accel Test                    | 39 |
| ◦ | Side Pod Test                 | 39 |
| ◦ | Exit Advanced Diagnostic Mode | 40 |

## Further Information

|   |                      |    |
|---|----------------------|----|
| ◦ | Technical Details    | 42 |
| ◦ | Product Code Summary | 42 |
| ◦ | Approvals            | 43 |

# Introduction

RADAR X is a discreet, bait-free solution using carbon dioxide (CO<sub>2</sub>) to quickly and effectively dispatch mice. Designed specifically for high risk market segments where even a single mouse cannot be tolerated. RADAR X is suitable for food and pharmaceutical manufacturers, hospitality, educational and health establishments.

11

## Safety Instructions

- Do not use the trapping device if it is damaged.
- Do not expose the trapping device to corrosive liquids.
- Do not use this trapping device near to water sources.
- Only trained personnel should open the device. 12A
- This trapping device contains a pressurised carbon dioxide (CO<sub>2</sub>) canister and should not be heated or incinerated.
- Only “approved”, supplied by Rentokil RADAR or RADAR S 8g carbon dioxide (CO<sub>2</sub>) gas canisters are to be used in the trapping device.
- Do not allow children to handle, operate or service this device.
- Be aware of the risk of RADAR X or its battery being short-circuited by metal objects. 12B

### Batteries

- Batteries are not included in the product, please purchase battery packs from the company before use, only use the battery packs part number 304876 supplied by Rentokil Initial for this product.
- These batteries are not to be recharged.
- Do not expose RADAR X or its battery to excessive temperatures.
- Batteries can leak hazardous materials like mercury, lead and cadmium, which can be harmful to the environment and human health. When disposing of a leaking battery, you should:
  - Protect yourself  
Wear protective gloves and avoid contact with the battery. If you do come into contact with the battery, wash your hands and skin thoroughly.
  - Contain the battery  
Put the leaking battery in a sealed, non-metallic container, such as a clear plastic bag.
  - Take it to a recycling center  
Take the battery to a household recycling centre or hazardous waste facility.
- Exhausted batteries are to be removed from RADAR X and safely disposed of.
- If RADAR X is to be stored unused for a long period, the battery should be removed.
- Do not use modified or damaged batteries.

13

**Note: A.** If the equipment is used in a manner not specified by the manufacturer then the protection provided by the equipment may be impaired.

**B.** Save these instructions.

14

# Introduction

## Attention

Users can perform the maintenance tasks described in this document. Users must not perform any other repairs or maintenance.

Each CO<sub>2</sub> canister can only be used once. RADAR X requires no maintenance other than cleaning and management of the batteries and CO<sub>2</sub> canisters.

15

## Warning

Only personnel with appropriate skills and training must install or service this trapping device. Do not install this trapping device in areas where dangerous concentrations of inflammable or explosive substances may be present in the air. This trapping device contains Radio Emitting devices and should not be used near life support systems. This appliance is not intended for use by persons (including children) with reduced physical, sensory or mental capabilities, or lack of experience and knowledge, unless they have been given supervision or instruction concerning use of the appliance by a person responsible for their safety. Children must not play with this trapping device. The appliance is to be kept out of reach of children.

16

# Warning Translations

## NL: Waarschuwing

Alleen mensen met de juiste vaardigheden en training mogen dit vangapparaat plaatsen of onderhouden. Plaats dit vangapparaat niet in gebieden waar gevaarlijke concentraties brandbare of explosieve substanties in de lucht aanwezig kunnen zijn. Dit vangapparaat bevat radiozendapparatuur en mag niet worden gebruikt in de buurt van levensreddende apparatuur. Dit apparaat is niet bedoeld voor gebruik door kinderen of personen met verminderde fysieke, zintuiglijke of geestelijke vermogens, of een gebrek aan technisch inzicht en ervaring, tenzij ze onder toezicht staan van of instructies hebben gekregen over het gebruik van het apparaat door een persoon die verantwoordelijk is voor hun veiligheid. Kinderen mogen niet spelen met dit vangapparaat. Houd het apparaat buiten het bereik van kinderen.

## FR: Avertissement

Seul le personnel doté des compétences et d'une formation appropriées est autorisé à installer ou entretenir ce piège. Ne pas installer ce piège dans les zones où des substances inflammables ou explosives sont présentes en concentration dangereuse dans l'air. Ce piège contient des appareils qui émettent des radio-fréquences et ne doit pas être utilisé à proximité des systèmes de maintien des fonctions vitales. Cet appareil n'est pas conçu pour une utilisation par des personnes (y compris des enfants) présentant des capacités physiques, sensorielles ou mentales réduites, ou un manque d'expérience et de connaissances, sauf si elles peuvent bénéficier, par l'intermédiaire d'une personne responsable de leur sécurité, d'une surveillance ou d'instructions préalables concernant l'utilisation de l'appareil. Les enfants ne doivent pas jouer avec ce piège. L'appareil doit être tenu hors de portée des enfants.

## DE: Warnung

Diese Fangvorrichtung darf nur von entsprechend qualifizierten und geschulten Personen installiert und gewartet werden. Installieren Sie diese Fangvorrichtung nicht in Bereichen, in denen gefährliche Konzentrationen brennbarer oder explosionsfähiger Stoffe in der Luft vorhanden sein können. Diese Fangvorrichtung enthält Funksender und darf nicht in der Nähe von Lebenserhaltungssystemen verwendet werden. Dieses Gerät ist nicht für die Benutzung durch Personen (einschließlich Kindern) mit eingeschränkten körperlichen, sensorischen oder geistigen Fähigkeiten und Personen mit fehlender Erfahrung und Kenntnissen ausgelegt, sofern sie nicht durch eine für ihre Sicherheit zuständige Person beaufsichtigt werden oder von ihr Anweisungen erhalten, wie das Gerät zu benutzen ist. Kinder dürfen nicht mit dieser Fangvorrichtung spielen. Das Gerät darf nicht in die Hände von Kindern gelangen.

## DK: Advarsel

Kun personale med passende færdigheder og uddannelse må installere eller vedligeholde denne fældeenhed. Installér ikke denne fældeenhed på steder, hvor der kan være farlige koncentrationer af brandfarlige eller eksplosive stoffer til stede i luften. Denne fældeenhed indeholder radiostrålende enheder og bør ikke bruges i nærheden af livsopretholdende systemer. Dette apparat er ikke beregnet til brug af personer (herunder børn) med nedsatte fysiske, sensoriske eller mentale evner eller manglende erfaring og viden, medmindre de har fået tilsyn eller instruktion om brug af apparatet af en person, der er ansvarlig for deres sikkerhed. Børn må ikke lege med denne fældeenhed. Apparatet skal opbevares utilgængeligt for børn.

## CZ: Varování

Instalaci nebo servis tohoto odchyťového zařízení smí provádět pouze osoby s odpovídajícími dovednostmi a školením. Instalaci odchyťového zařízení neprovádějte v místech, kde se ve vzduchu mohou vyskytovat nebezpečné koncentrace hořlavých nebo výbušných látek. Toto odchyťové zařízení obsahuje zařízení vysílající rádiové signály a nemělo by se používat v blízkosti systémů pro podporu životních funkcí.

Toto zařízení není určeno pro použití osobami s omezenými fyzickými, smyslovými nebo duševními schopnostmi (včetně dětí), případně jedinci postrádajícími zkušenosti a znalosti, pokud jim osoba zodpovídající za jejich bezpečnost nedá instrukce ohledně jeho použití nebo na ně nebude dohlížet. S odchytným zařízením si nesmí hrát děti. Zařízení musí být uchováváno mimo dosah dětí.

### **ES: Advertencia**

Solo el personal con la cualificación y competencias adecuadas puede instalar o realizar el mantenimiento de este dispositivo de captura. No instalar este dispositivo de captura en zonas donde pueda haber concentraciones peligrosas de sustancias inflamables o explosivas en el aire. Este dispositivo de captura contiene dispositivos emisores de radio y no debe utilizarse cerca de sistemas de soporte vital. Este aparato no ha sido pensado para ser utilizado por personas (incluidos menores) con capacidades físicas, sensoriales o mentales limitadas o que no cuenten con la experiencia o conocimientos necesarios, salvo que se encuentren bajo la supervisión de una persona responsable de su seguridad o sigan las instrucciones relativas al uso del mismo. Los niños no deben jugar con este dispositivo de captura. El aparato debe mantenerse fuera del alcance de los niños.

### **PT: Aviso**

A instalação e a assistência para este dispositivo de captura devem ser da responsabilidade exclusiva de colaboradores com competências e formação adequadas. Não instale este dispositivo de captura em áreas onde possam existir concentrações perigosas de substâncias inflamáveis ou explosivas na atmosfera. Este dispositivo de captura contém aparelhos que emitem ondas de rádio e não deve ser utilizado nas imediações de sistemas de suporte de vida. O presente equipamento não se destina à utilização por pessoas (incluindo crianças) com capacidades físicas, sensoriais ou mentais reduzidas ou com falta de experiência ou conhecimento, a menos que tenham sido supervisionadas ou instruídas acerca da utilização do equipamento por uma pessoa responsável pela sua segurança. As crianças não devem brincar com este dispositivo de captura. Mantenha este equipamento fora do alcance de crianças.

### **FI: Varoitus**

Tämän loukutuslaitteen saa asentaa tai huoltaa vain henkilö, jolla on asianmukaiset taidot ja koulutus. Älä asenna tätä loukutuslaitetta alueille, joilla ilmassa voi olla vaarallisia pitoisuuksia helposti syttyviä tai räjähtäviä aineita. Tämä loukutuslaite sisältää radiotaajuista säteilyä lähettäviä laitteita, eikä sitä saa käyttää lähellä elämää ylläpitäviä järjestelmiä. Tätä laitetta ei ole tarkoitettu lasten, fyysisesti tai psyykkisesti rajoittuneiden tai aistivammaisten, kokemattomien tai osaamattomien henkilöiden käyttöön, ellei heidän turvallisuudestaan vastaava henkilö ole antanut opastusta laitteen käyttöön tai valvo sen käyttöä. Lapset eivät saa leikkiä tällä loukutuslaitteella. Laite on pidettävä lasten ulottumattomissa.

### **IT: Avvertenza**

Solo il personale dotato di competenze e formazione adeguate può provvedere all'installazione o alla manutenzione di questo dispositivo d'intrappolamento. Non installare questo dispositivo d'intrappolamento in aree con possibili concentrazioni pericolose di sostanze infiammabili o esplosive nell'aria. Questo dispositivo d'intrappolamento contiene dispositivi con emissione radio e non dovrebbe essere utilizzato in prossimità di sistemi di supporto vitale. Questo dispositivo non è destinato all'uso da parte di persone (compresi i bambini) con ridotte capacità fisiche, sensoriali o mentali, oppure inesperienza e mancanza di conoscenza, a meno che non siano supervisionate o istruite sull'uso del dispositivo da una persona responsabile della loro sicurezza. I bambini non devono giocare con il dispositivo d'intrappolamento. L'apparecchio deve essere tenuto fuori dalla portata dei bambini.

### SK: Varovanie

Inštaláciu alebo údržbu tejto pasce smie vykonávať iba vyškolený personál disponujúci adekvátnymi zručnosťami. Túto pascu neinštalujte na miestach, kde sa vo vzduchu môže vyskytovať nebezpečná koncentrácia horľavých alebo výbušných látok. Táto pasca obsahuje komponenty vysielajúce rádiové frekvencie vlny a nesmie sa používať v blízkosti systémov na podporu životných funkcií. Toto zariadenie nesmú používať osoby (vrátane detí) so zníženými fyzickými, vnemovými či mentálnymi schopnosťami, resp. osoby bez skúseností a znalostí, ak nie sú pod dozorom osoby zodpovednej za ich bezpečnosť alebo ak ich takáto osoba nepoučila v súvislosti s používaním zariadenia. Deti sa s touto pascou nesmú hrať. Zariadenie uchovávať mimo dosahu detí.

### SV: Varning

Endast personal med lämplig kompetens och utbildning får installera eller underhålla denna fälla. Installera inte denna fälla i områden där farliga koncentrationer av lättantändliga eller explosiva ämnen kan finnas i luften. Den här fällan innehåller radioutsändande enheter och får inte användas i närheten av livsuppehållande system. Denna apparat är inte avsedd att användas av personer (inklusive barn) med nedsatt fysisk, sensorisk eller mental förmåga, eller personer som saknar erfarenhet och kunskap, såvida de inte övervakas eller mottagit instruktioner angående användning av denna apparat av en person som ansvarar för deras säkerhet. Barn får inte leka med fällan. Apparaten ska förvaras utom räckhåll för barn.

### NO: Advarsel

Kun personell med riktig kompetanse og opplæring må installere eller reparere denne fellen. Ikke installer denne fellen i områder hvor farlige konsentrasjoner av brannfarlige eller eksplosive stoffer kan være til stede i luften. Denne fellen inneholder enheter som sender radiosignaler og bør ikke brukes i nærheten av livreddende systemer. Dette apparatet er ikke beregnet for bruk av personer (inkludert barn) med nedsatt fysisk, sensorisk eller mental evne, eller som har mangel på erfaring og kunnskap, med mindre de har fått tilsyn eller instruksjoner om bruk av apparatet av en person som er ansvarlig for sikkerheten deres. Barn må ikke leke med denne fellen. Apparatet må oppbevares utilgjengelig for barn.

### EL: Προειδοποίηση

Μόνο προσωπικό με τις κατάλληλες δεξιότητες και εκπαίδευση επιτρέπεται να εγκαταστήσει ή να επισκευάσει αυτήν τη συσκευή παγίδας. Μην τοποθετείτε αυτή τη συσκευή παγίδας σε χώρους όπου ενδέχεται να υπάρχουν επικίνδυνες συγκεντρώσεις εύφλεκτων ή εκρηκτικών ουσιών στον αέρα. Αυτή η συσκευή παγίδας περιέχει διατάξεις ραδιοεκπομπών και δεν πρέπει να χρησιμοποιείται κοντά σε συστήματα υποστήριξης ζωής. Αυτή η συσκευή δεν προορίζεται για χρήση από άτομα (συμπεριλαμβανομένων των παιδιών) με περιορισμένες σωματικές, αισθητηριακές ή νοητικές ικανότητες ή με περιορισμένη εμπειρία και γνώσεις, εκτός εάν βρίσκονται υπό την επίτηρηση ή υπό την καθοδήγηση, αναφορικά με τη χρήση της συσκευής, κάποιου ατόμου υπεύθυνου για την ασφάλειά τους. Τα παιδιά δεν πρέπει να παίζουν με αυτή τη συσκευή παγίδας. Η συσκευή πρέπει να διατηρείται μακριά από τα παιδιά.

### TK: Uyarı

Bu tuzak ünitesinin kurulum veya servis işlemlerini sadece uygun becerilere ve eğitime sahip kişiler gerçekleştirmelidir. Bu tuzak ünitesini, havada tehlikeli yoğunlukta yanıcı veya patlayıcı maddeler bulunabilecek alanlara kurmayın. Bu tuzak cihazı radyo sinyali yayan cihazlar içerir ve yaşam destek sistemlerinin yakınında kullanılmamalıdır. Bu cihaz, güvenliklerinden sorumlu kişi tarafından cihazın kullanımıyla ilgili gözetim veya talimat verilmedikçe, fiziksel, duyuşsal veya zihinsel yetenekleri kısıtlı veya deneyim ve bilgi eksikliği olan kişiler (çocuklar dahil) tarafından kullanılmak üzere tasarlanmamıştır. Çocuklar bu tuzak cihazıyla oynamamalıdır. Cihaz, çocukların ulaşamayacağı bir yerde saklanmalıdır.



## Product Description

RADAR X is a stand alone, battery powered trapping device that has been designed to capture, dispatch and contain mice efficiently. It is designed primarily for high risk customers, such as food processing plants, pharmaceutical manufacturing and computer suites, where there is zero pest tolerance or conventional baiting is not allowed. However, the many product features of RADAR X make it suitable for a wide range of customers as it can operate in a variety of environments. Intruding mice are captured as soon as they are detected, immediately reducing the risk to the customer. They are then dispatched by concentrated release of carbon dioxide (CO<sub>2</sub>) into the tightly sealed trapping device. CO<sub>2</sub> is capable of dispatching mice extremely rapidly. The mouse is unconscious within 15-20 seconds and fatal levels are reached within 45 seconds of the trapping device's activation.

RADAR X has been designed by Rentokil to exploit the travelling habits of mice as opposed to more traditional methods which target their feeding behaviours, e.g. baiting. Correctly installed trapping devices will typically be placed at wall / floor junctions, relying on a mouse's natural curiosity and tendency to run against walls. When the mouse enters through the trap, it triggers the device to immediately close the door, trapping the mouse inside a tightly sealed chamber. Simultaneously, a pressurised CO<sub>2</sub> gas canister is pierced and fills the relevant tray with CO<sub>2</sub>.

The customer is provided with 24/7 pest control and can be reassured that the product is effective, reducing the risk to their stock and premises.

## Product Function (LoRaWAN® Connect Variant Only)

RADAR X signals the capture of a mouse sending a message to the Connect gateway and then server. A technician will receive an alert to empty, clean, service and reset the trapping device. Rigorous testing and quality controls have been implemented at every stage of the manufacturing process to ensure that RADAR X is a high quality product that is capable of supporting a high quality service proposition.

The LoRaWAN® radio system ensures reliable connectivity remotely through the gateways. The RADAR X will transmit data and that will be relayed to our servers by any gateway that is in range.

The loss of connection to the radio system will cause sensors to retry the connection and attempt to make a new one if it can. If connection continues to be unsuccessful the software automatically increases the time between attempts to conserve battery life.

# Warranty and Disclaimer Statements

The product and the softwares within are provided on an “as is” basis. TO THE EXTENT CONSISTENT WITH APPLICABLE LAW, the manufacturer resellers (collectively known as “The Sellers”) disclaim all warranties, express, implied or statutory, including and without limitation the implied warranties of non-infringement, merchantability or fitness for a particular purpose, or any warranties arising from course of dealing, course of performance, or usage of trade. In no event will the sellers be liable for damages or loss, including but not limited to direct, indirect, special, willful, punitive, incidental, exemplary or consequential damages, damages for loss of business profits, or damages for loss of business of any customer or third party arising out of the use or the inability to use the product, including but not limited to those resulting from defects in the product or documentation. In no event shall the sellers’ total cumulative liability of each and every kind in relation to the product exceed the cost to replace.

TO THE EXTENT CONSISTENT WITH APPLICABLE LAW, Rentokil cannot accept any liability for any loss or damage arising from the use of any information contained within this manual, or from any incorrect use of the product described herein. Rentokil cannot accept any liability whatsoever for any loss or damage arising from the product being serviced maintained or repaired by unauthorized personnel.

These Warranty and Disclaimer Statements are made to the extent permissible under local law. If any provision, or part-provision of these Warranty and Disclaimer Statements is or becomes invalid, illegal or unenforceable, such provision or part-provision shall be deemed modified to the minimum extent necessary to make it valid, legal and enforceable. If such modification is not possible, the relevant provision or part-provision shall be deemed deleted.

20

## Product Disposal

The Waste of Electrical and Electronic Equipment WEEE Directive 2012/19/EU has been put in place to recycle products using best available recovery and recycling techniques to minimise the impact on the environment, treat any hazardous substances and avoid increasing landfill. The symbol shown below and on the product means that the product is classed as Electrical or Electronic Equipment and you should not put it into your domestic waste bin. When you have no more use for it, please dispose of the product according to your local authority’s recycling scheme. Batteries should be disposed of separately and in accordance with the WEEE Directive (2012/19/EU). For more information, please contact your local authority or the retailer where you bought the product.



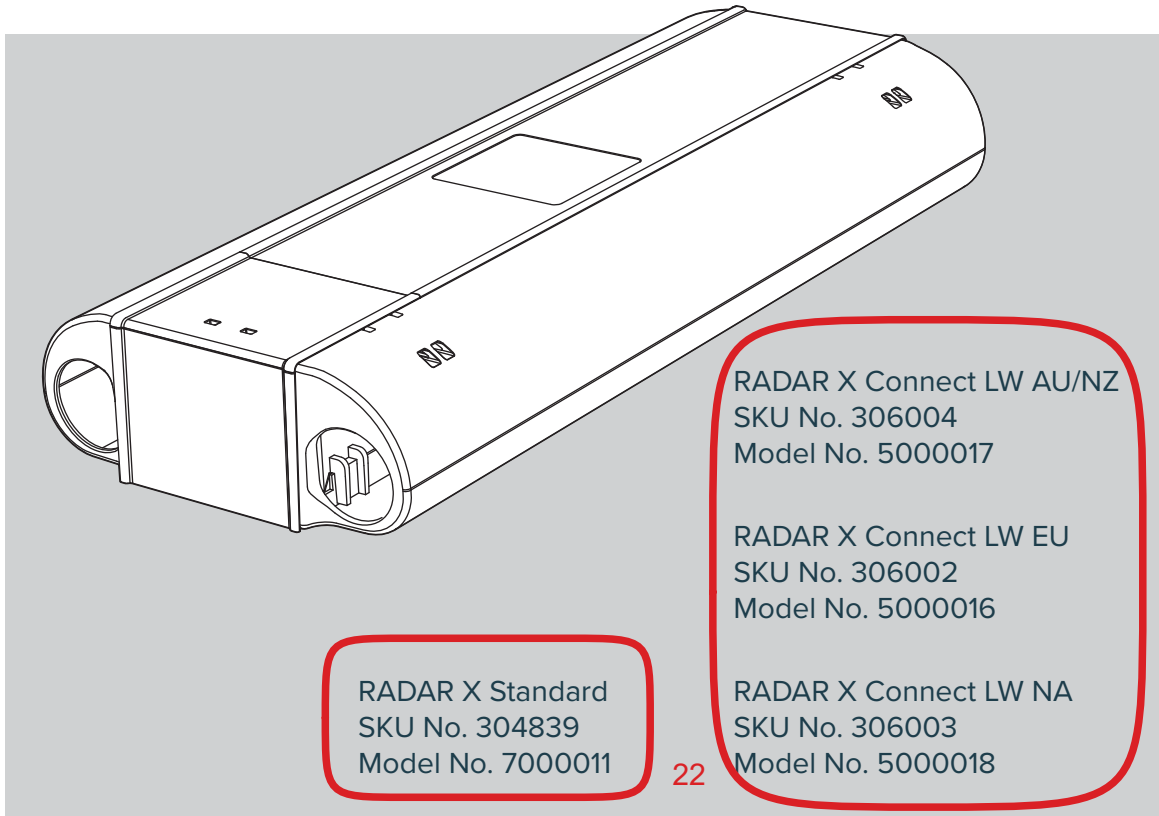
21

# Limitations

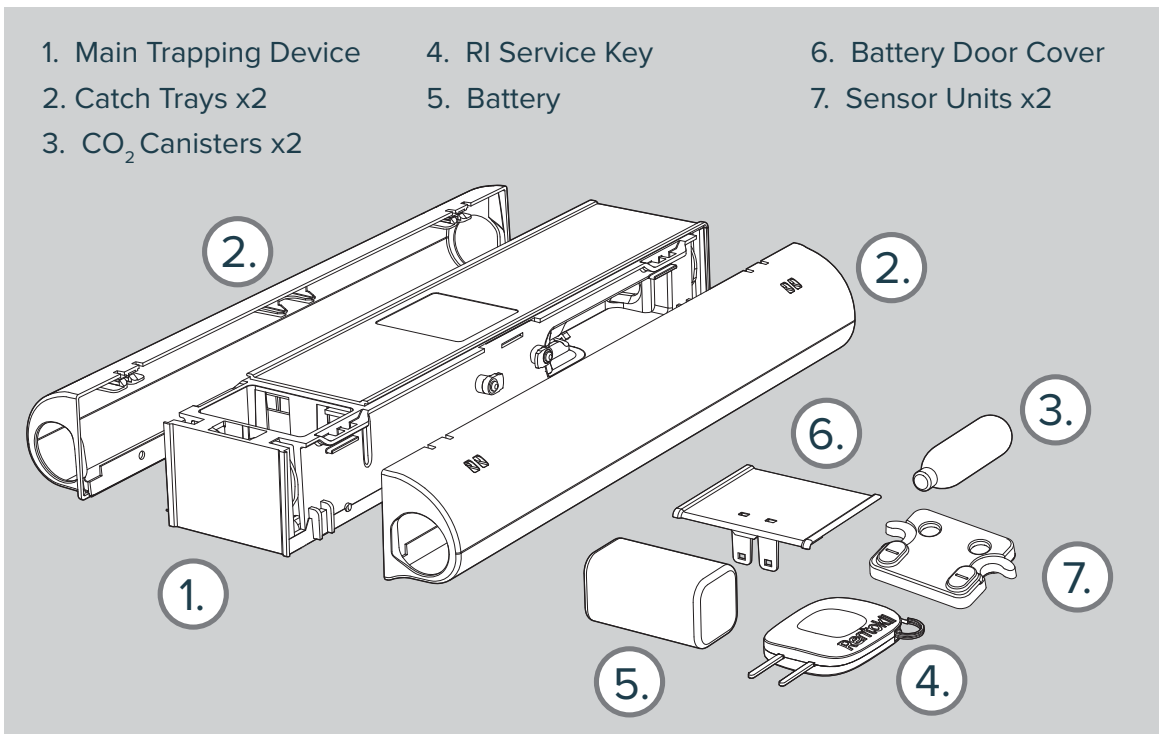
| Environmental Restrictions                               | Details  |
|--|--|
| High levels of surface water                             | The system electronics are protected by IP65 rating however excessive levels of water can damage the device. Take care to locate trapping devices away from areas where local high pressure washing is carried out or where the unit could be at risk of being immersed in water.                                  |
| High levels of dust / grease                             | It is important that trapping devices are kept clean, especially if installed in areas where high levels dust, grease or spray from water are present. Cleaning guidelines must be followed to prevent damage to the trapping devices.   |
| Knocking / Kicking                                       | Care must be taken to locate trapping devices away from pedestrian traffic to avoid false activation.  |
| Extreme Temperatures<br><-5°C (+23°F)<br>>+50°C (+122°F) | Extremely low temperatures (i.e. unheated warehouses) could affect RADAR X's performance and may result in the trapping device entering low battery status mode. The unit will trigger should the ambient temperature exceed 50°C as a safety precaution due to the limitation of the CO <sub>2</sub> canister(s). |
| High humidity (> 80%)<br>condensation                    | High humidity and / or condensation could result in damage to the trapping device's control electronics and result in false activations.   |
| High levels of vibration                                 | High vibration due to localised machinery / fridge compressors etc could affect the performance of the trapping device and result in false activations.  |
| Indoor Use Only  | RADAR X has been specifically designed for indoor applications only. The product is not suitable for outdoor use.  |

# Product Range

## i. SKU Variants



## ii. Component Parts for Installation



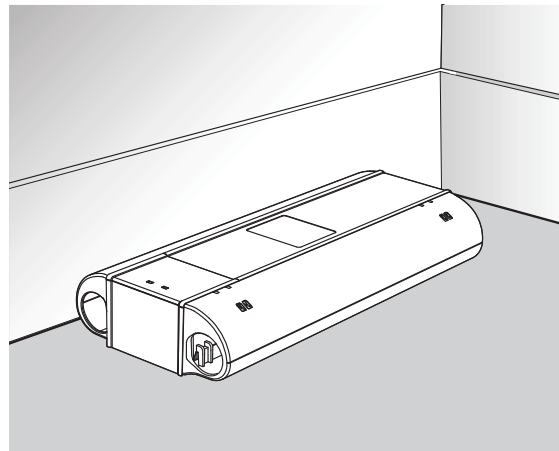
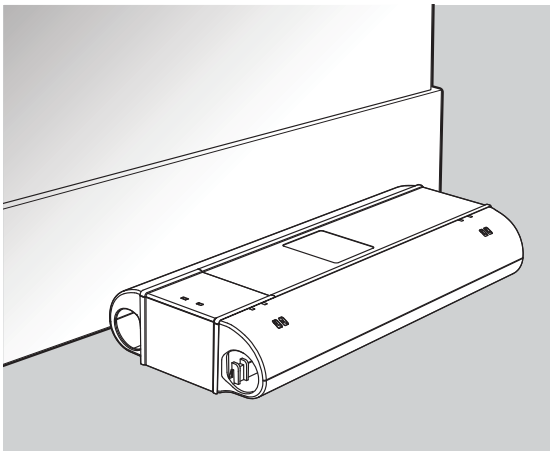
# Installation

## 1. Prior to RADAR X Installation

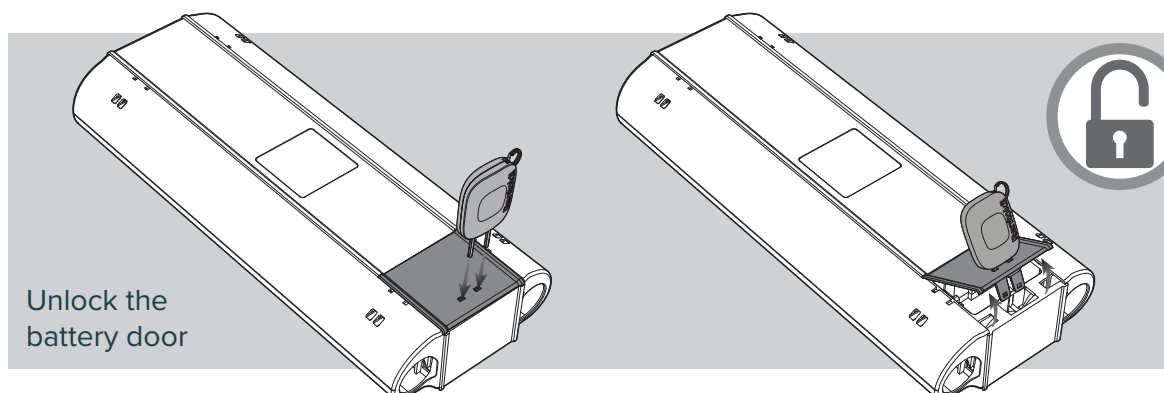
While unpacking, check for any signs of shipment damage and, if found, notify both transporter and supplier in writing immediately of receipt with full details of the damage that has occurred. Retain the equipment and packing materials for inspection. Check that all parts have been received as ordered. Make sure that all packaging is removed from the trapping device before use.

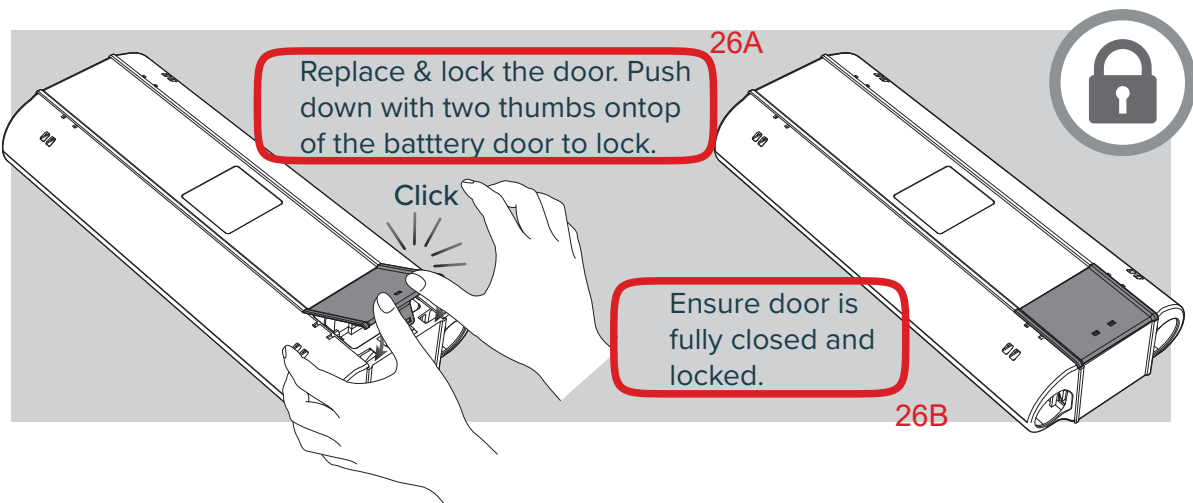
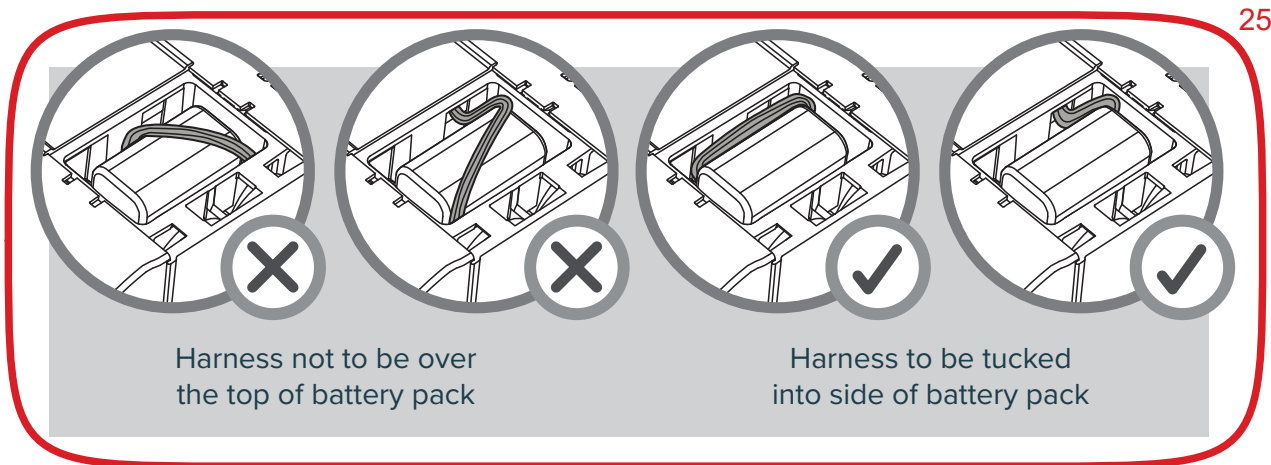
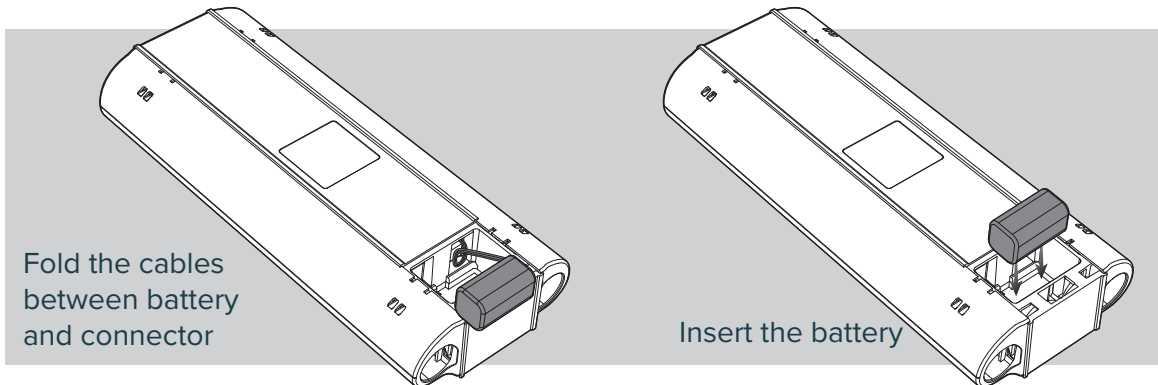
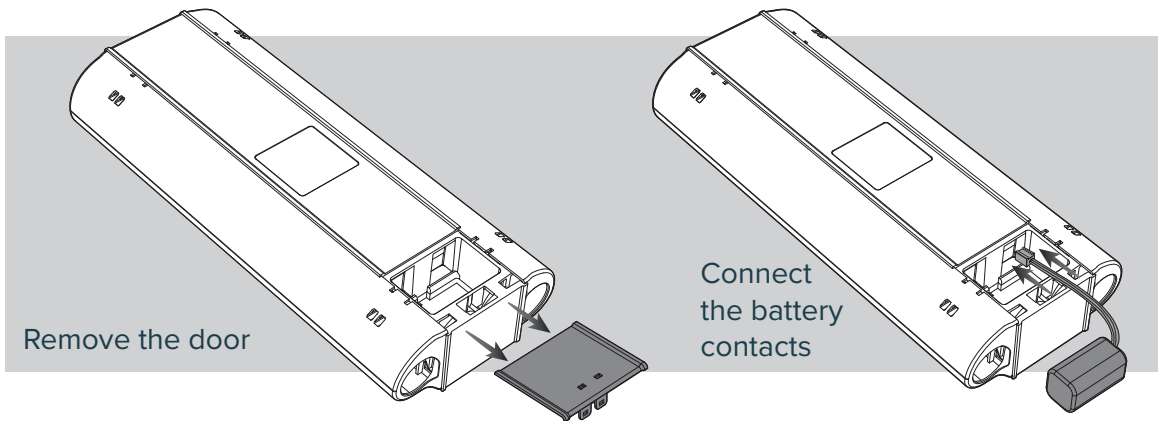
## 2. Site Installation

RADAR X trapping devices should be sited along wall / floor junctions, behind machinery and equipment, i.e. anywhere where bait boxes and mouse monitor units (MMU's) would normally be placed.

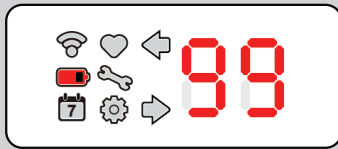



## 3. Fitting the Battery





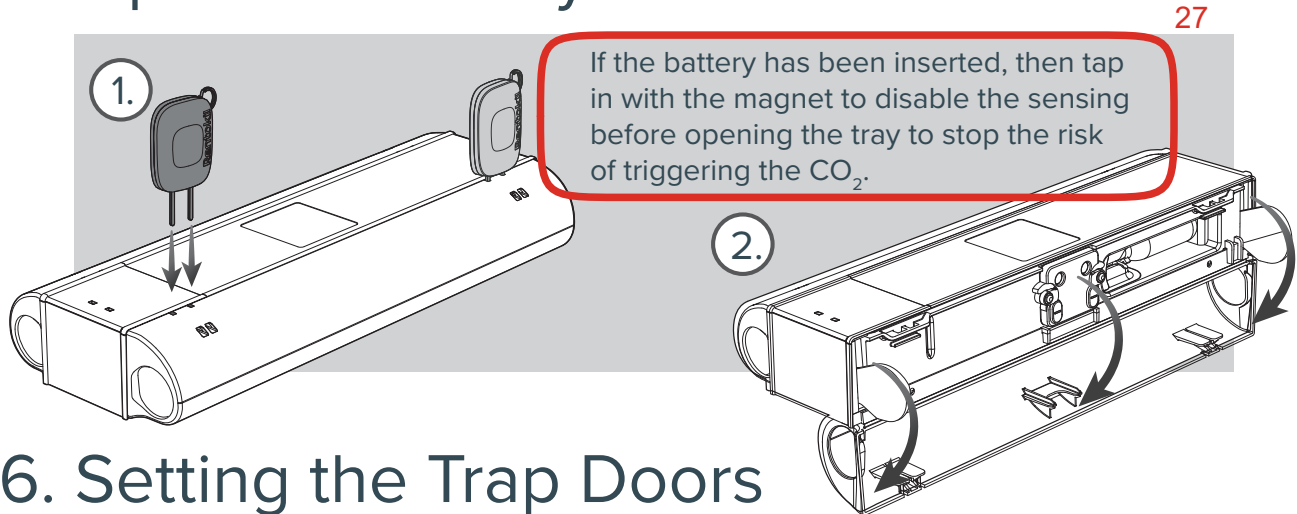
## 4. Battery Level



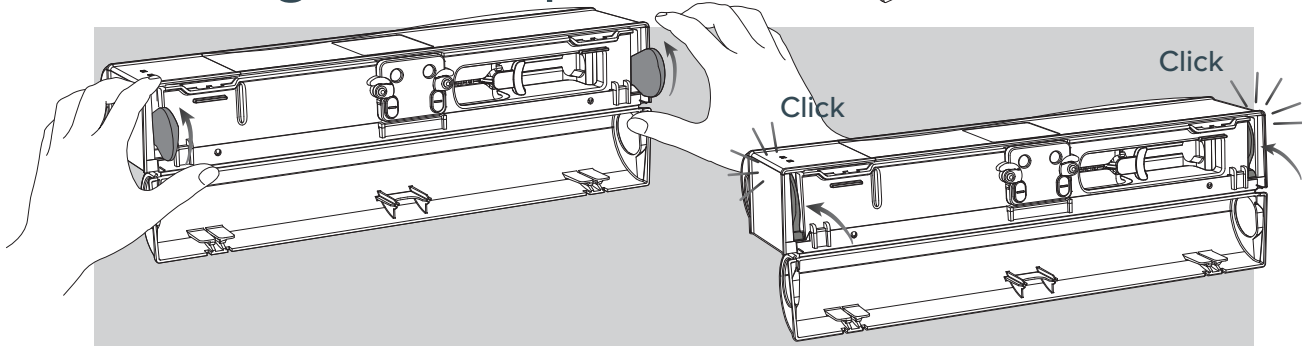
Battery capacity % displayed for 2 seconds with Battery Level (Icon ) solid.

Eg: Battery is at 99%

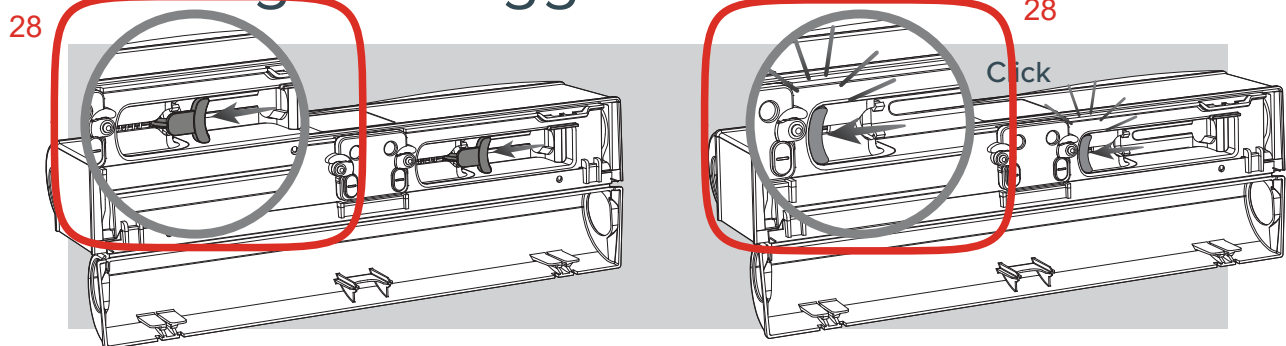
## 5. Open Catch Tray



## 6. Setting the Trap Doors



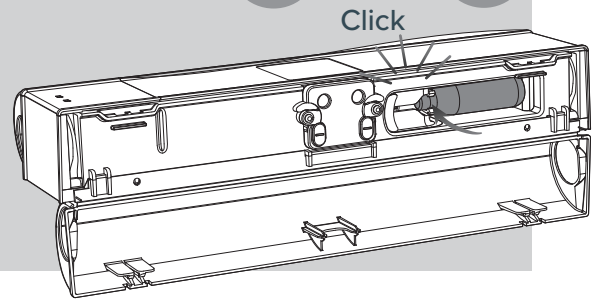
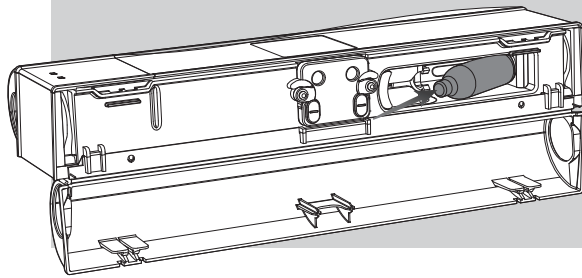
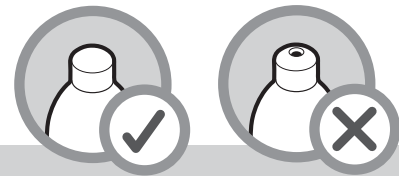
## 7. Setting the Trigger Mechanism



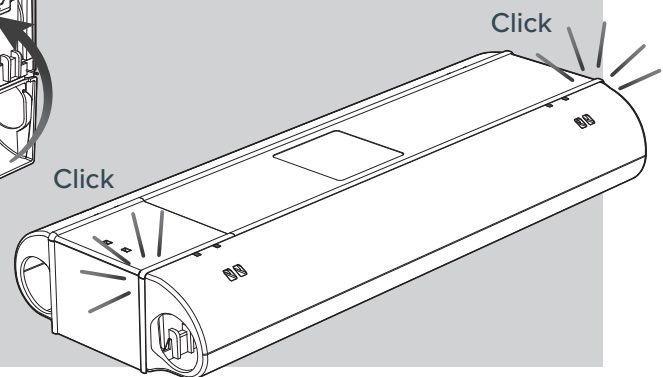
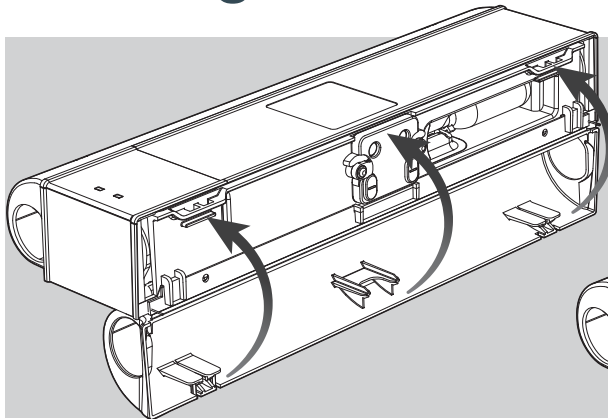


## 8. Fitting CO<sub>2</sub> Canister

Ensure a new and undamaged CO<sub>2</sub> Canister is fitted



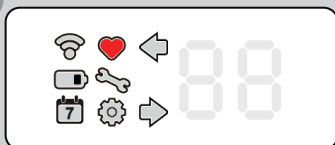
## 9. Refitting the Catch Tray



## 10. Arming the Module (Standard Variant Only)

29

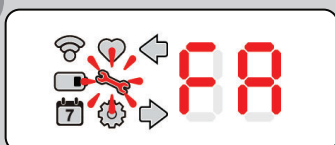
1



If unit is deployable the Device Status (Icon ♥) will go solid red and the unit is capable of trapping after 30 seconds. And can now be left. Alternatively, use the magnetic key to cycle through the “Status Check” as described on pg 18.

**NOTE:** The heart will display even if canister(s) are not loaded as there is no active electrical check for their presence. Therefore it is up to the technician to **ENSURE** viable CO<sub>2</sub> canister(s) are loaded when commissioning/servicing.

2

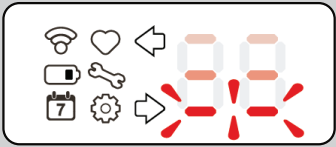


If the Service Mode (🔧) flashes at the same time as the user interface displays “FA” the unit needs to be decommissioned and returned. If the unit has a solvable Error the Service Mode icon will flash, along with which side requires the service via the Arrow Status icon where relevant.

Tapping will provide exact code of the failure, Error Code Table can be found on the underside of the unit, or on page 29 of this manual for a more detailed explanation. For all but “FA”, if the fault persists after corrective action try disconnecting the battery, wait 5 seconds and reconnect the battery. If this fails decommission and return the device. See page 27 for more interface information.

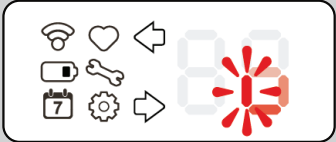
# 11. Arming the Module (LoRaWAN® Connect Variant Only)

1



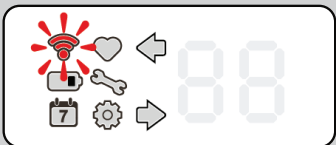
Eg: 3 second countdown

To deploy the unit, hold the key over the Active Magnet Zone under the Rentokil logo for 3 seconds. These 3 seconds can be seen visually with the use of the LEDs. This can be done at any time after tap in, unless servicing the device. Holding may also be done without tap in.




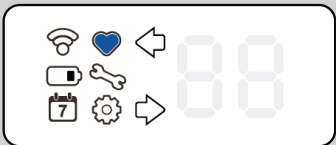
Eg: Spinning, waiting for response

The spinning icon indicates we are waiting for a response.




Eg: Flashing Red Radio, signal error

If comms is NOT OK the Device Status (Icon ) will be flashing red. This means signal is not strong enough. Try to connect again before moving, repositioning or adding another gateway.



Eg: Blue Heart, good signal


If all is OK the Device Status (Icon ) will be solid blue and the unit is capable of trapping after 30 seconds. And can now be left. Alternatively, use the magnetic key to cycle through the “Status Check” as described on page 18.

**NOTE: The heart will display even if canister(s) are not loaded as there is no active electrical check for their presence. Therefore it is up to the technician to ENSURE viable CO<sub>2</sub> canister(s) are loaded when commissioning/servicing.**

**NOTE: This can be used for a connectivity check at any location as required.**

2



If the Service Mode ( ) flashes at the same time as the user interface displays “FA” the unit needs to be decommissioned and returned. If the unit has a solvable Error the Service Mode icon will flash, along with which side requires the service via the Arrow Status icon where relevant.

Tapping will provide exact code of the failure, Error Code Table can be found on the underside of the unit, or on page 30 of this manual for a more detailed explanation. For all but “FA”, if the fault persists after corrective action try disconnecting the battery, wait 5 seconds and reconnect the battery. If this fails decommission and return the device. See page 29 for more interface information.

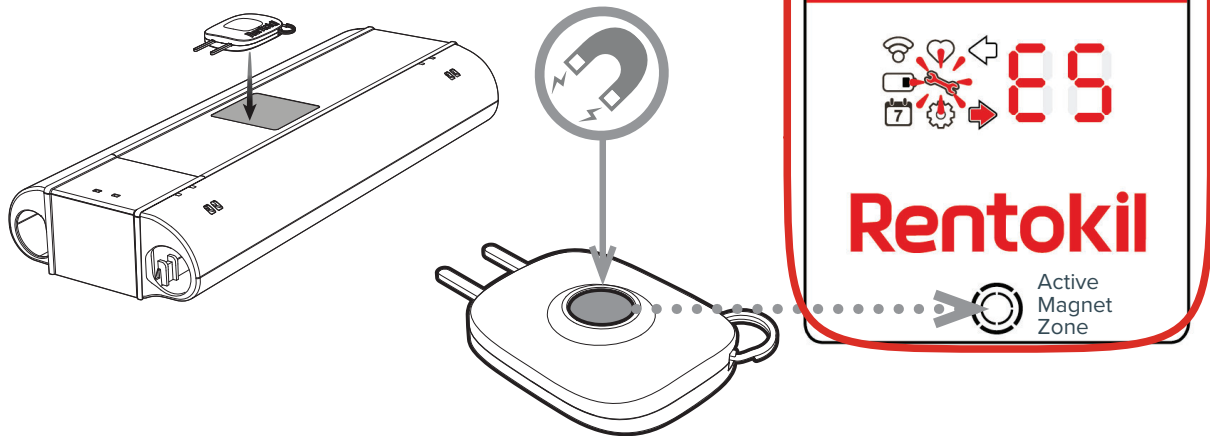
# Servicing & Maintenance

## 1. Status Check

Use the RI Key Magnet to activate the Interface

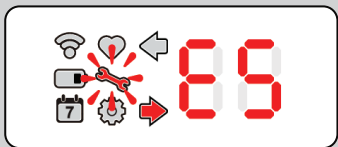
30A

**NOTE:** This is very important as it disables the trap to prevent it accidentally going off during servicing.




30B

### Tap 1



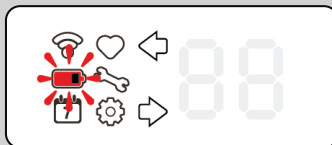
Eg: Error 5 (Trigger pin not set) on right side of unit.

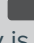
First tap using the RI Magnet Key, will display the units health. If not OK the Service Mode (Icon ) will flash and an error code will appear on the display indicating a service is required. The appropriate Arrow Icon will indicate which side the error is on.

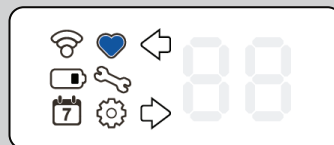
Error code meanings can be found on the label on the underside of the unit, or on page 31 of this manual.




If pest triggered (Mouse), "tr" is displayed a service is required.  
Eg: Left side triggered.



If battery level (Icon ) is flashing, the battery is low and should be replaced.



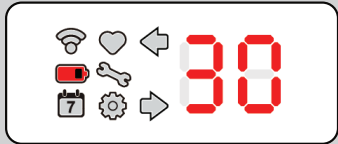
If all OK Device Status (Icon ) will be solid blue or red (depending on the variant). A service may not be required. Unit will be capable of trapping after 60 seconds.

31A

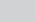
**NOTE:** The heart will display even if canister(s) are not loaded as there is no active electrical check for their presence. Therefore it is up to the technician to ENSURE viable CO<sub>2</sub> canister(s) are loaded when commissioning/servicing.

See **Page 29** for more Interface information.

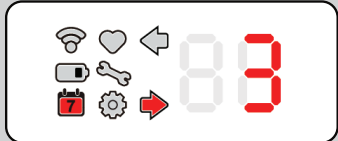
## Tap 2




Eg: 30% battery remaining

Second tap using the RI Magnet Key, will display Battery Level (Icon ) along with the percentage of battery level.

## Tap 3




Eg: Right chamber activated 3 days ago

Third tap using the RI Magnet Key, will display Catch Duration (Icon ) along with the left Arrow Status icon and number of days since the left hand side triggered. This will be shown for 2 seconds before the right Arrow Status icon and number of days since the right hand side triggered is shown.

## Tap 4

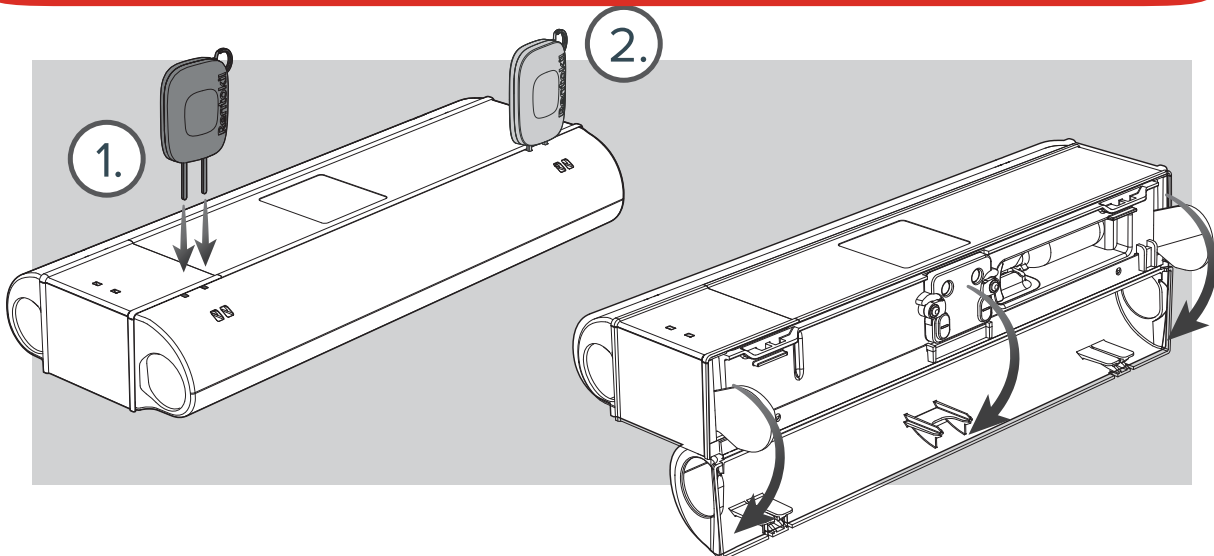
31B

Cycles Interface back to device status mode (Icon ) . At any point during these Taps, opening a tray will Enter Service Mode and exit Status Check.

# 2. Enter Service Mode

32

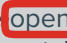
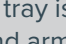

**NOTE: The interface display MUST be active before entering service mode. You are only required to enter Service Mode if there is an error shown on the interface display, or if a tray is visibly damaged and needs replacing. See previous section (1. Status Check).**

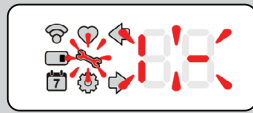


When the Interface is active open one of the two catch trays. This will access service mode.

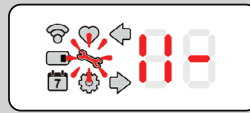
### 3. Within Service Mode

When in Service Mode the interface will indicate which catch tray is open and whether that side is armed. The outer vertical lines indicate the tray, the inner lines shows the pin arming.

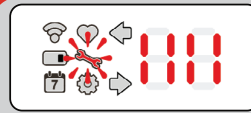
If the <sup>33A</sup>open catch tray is not armed it will be indicated on the display with flashing . If the same catch tray is open and is armed the display will show  and not flash. If both sides are open and armed  will be displayed. If both sides are open and only one is armed, the unarmed side will flash. See examples below.



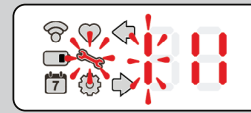
Eg: LHS catch tray open, not armed



Eg: LHS catch tray open and armed



Eg: Both catch trays open and armed



Eg: Both catch trays open and RHS armed only

33B

### 4. Cleaning

34A

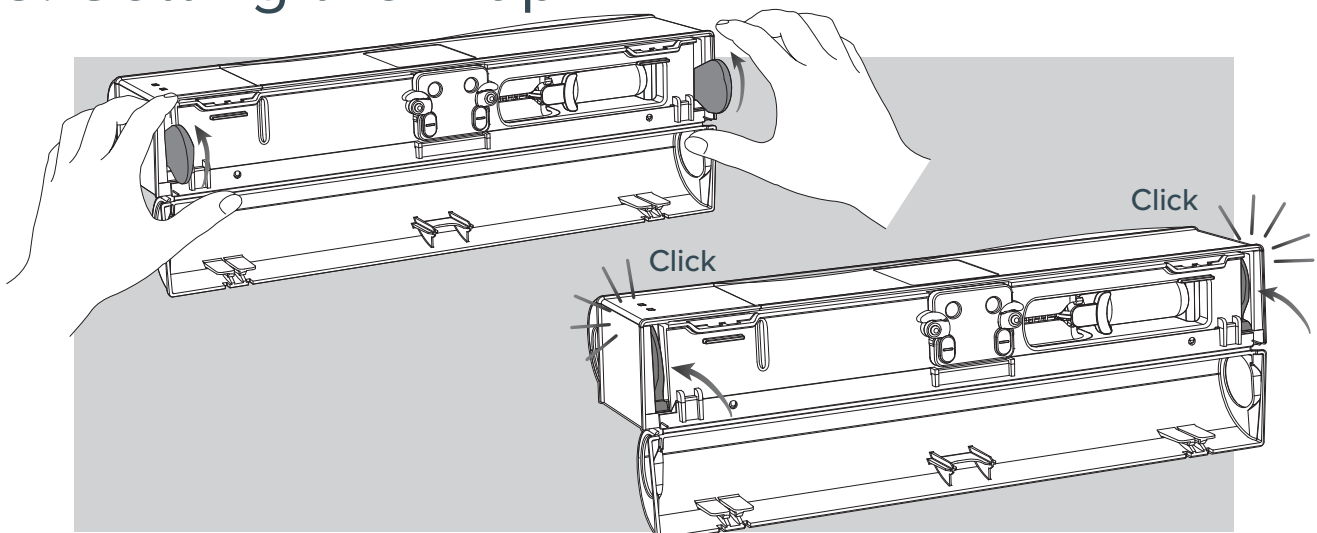
**Cleaning: Always Wear protective gloves when cleaning the unit.**

<sup>34B</sup>**RADAR X** units should only be cleaned with a damp cloth taking care to remove all dust and dirt that may accumulate within the box and on the outer case during normal use.

After any activation where a mouse corpse is found within the box, the deceased animal should be carefully removed and bagged for disposal. Sanitising wipes should then be used to clean the internal area of the box, ensuring all detritus within the RADAR X is fully cleaned and removed. The external areas can be cleaned using a damp cloth. All used Sanitising wipes, and other waste, including gloves should be disposed of as Pest Control waste in line with Rentokil Initial Waste Policy, whilst complying with local waste regulations. The RADAR X must always be sanitised/cleaned after any activation, and before resetting.

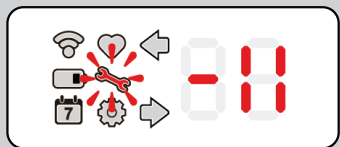
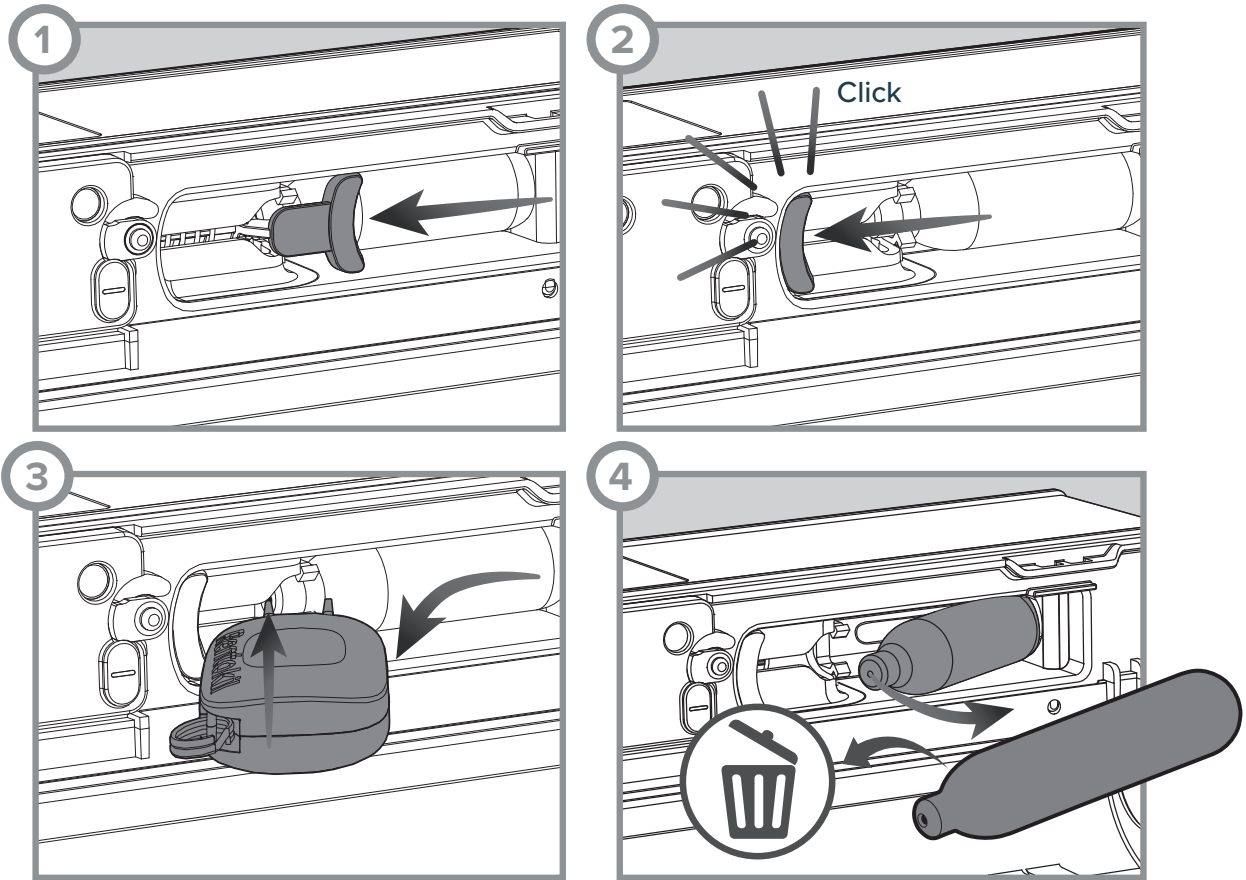
Always wash hands after servicing. Do not use industrial or commercial cleaning sprays within the RADAR X.

### 5. Setting the Trap



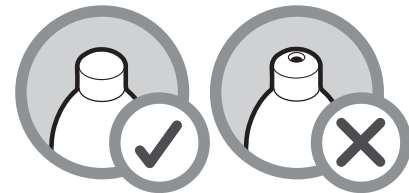
## 6. Removing a used CO<sub>2</sub> Canister

Note: CO<sub>2</sub> Canister MUST be replaced after each trigger event.

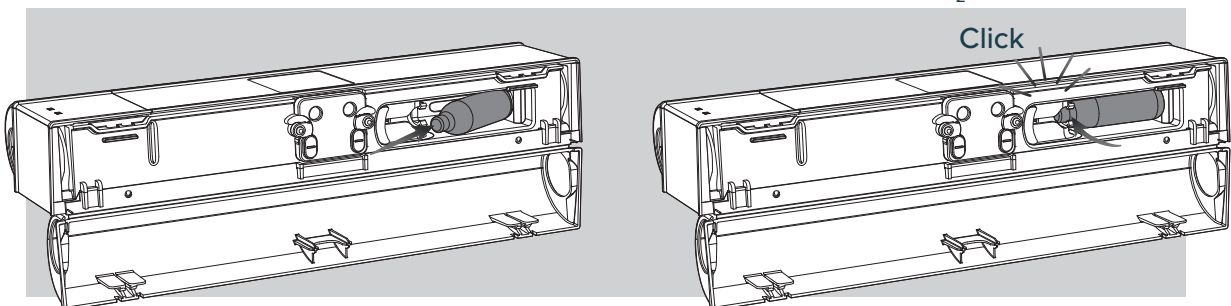


Once the **trigger pin** is armed, the once flashing **88** will become **88** and go solid on.  
NOTE: You will not be able to arm the **trigger pin** until you reset the gate in "5. Setting the trap"

## 7. Fitting a new CO<sub>2</sub> Canister

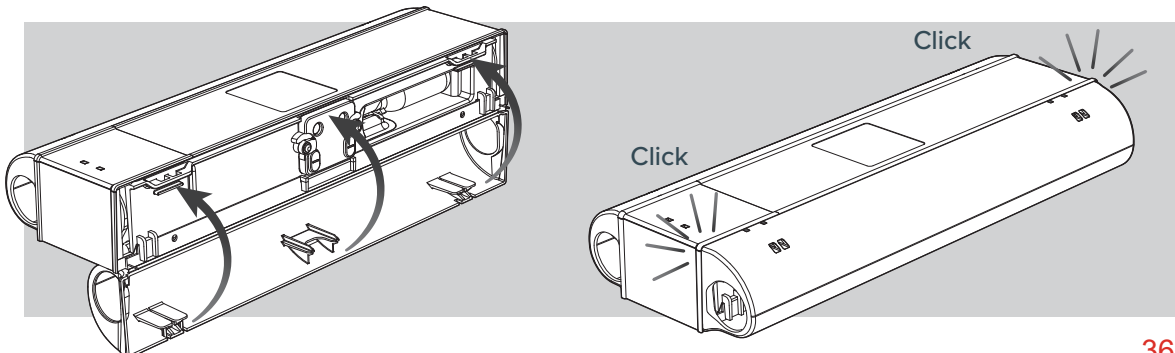


Ensure a new and undamaged CO<sub>2</sub> Canister is fitted



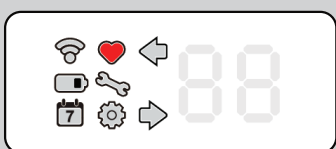


## 8. Closing the Catch Tray



36

## 9. Reactivate the Trap (Standard Variant only)



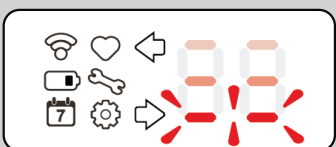
If all is OK the Device Status (Icon ♥) will be solid red. The service is now complete.

**Note:** The unit will allow a **SELF** deploy as long as one side is set correctly. i.e. it is possible to allow a unit to **SELF** deploy even if one side is not functional.

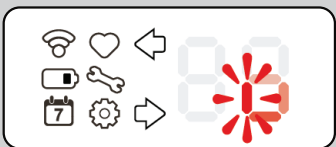
**NOTE:** The heart will display even if canister(s) are not loaded as there is no active electrical check for their presence. Therefore it is up to the technician to **ENSURE** viable CO<sub>2</sub> canister(s) are loaded when commissioning/servicing.

36

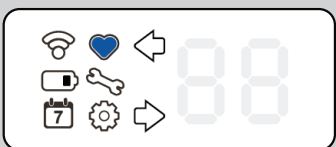
## 10. Reactivate the Trap (LoRaWAN® Connect Variant only)



To deploy the unit, hold the key over the active magnetic zone under the Rentokil logo for 3 seconds. These 3 seconds can be seen visually with the use of the LEDs. This can be done at any time after tap in, unless servicing the device. Holding may also be done without tap in.



The spinning icon indicates you are waiting for a response.



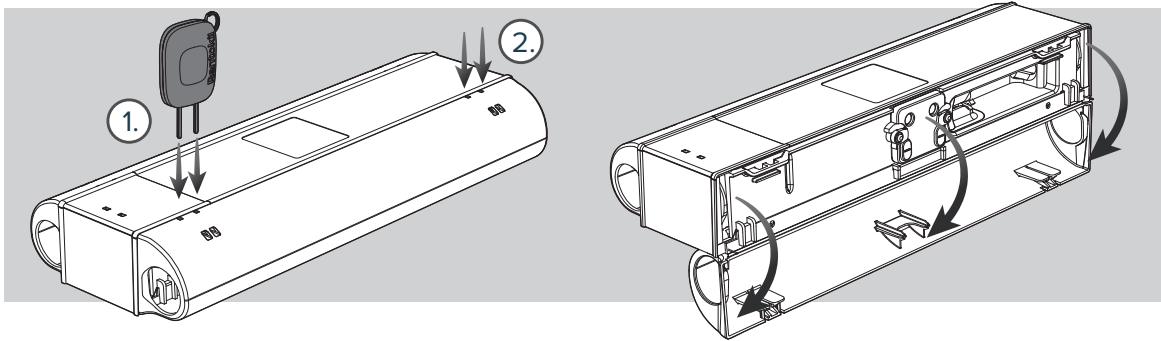
If all is OK the Device Status (Icon ♥) will be solid blue. The service is now complete.

**Note:** The unit will allow a **SELF** deploy as long as one side is set correctly. i.e. it is possible to allow a unit to **SELF** deploy even if one side is not functional.

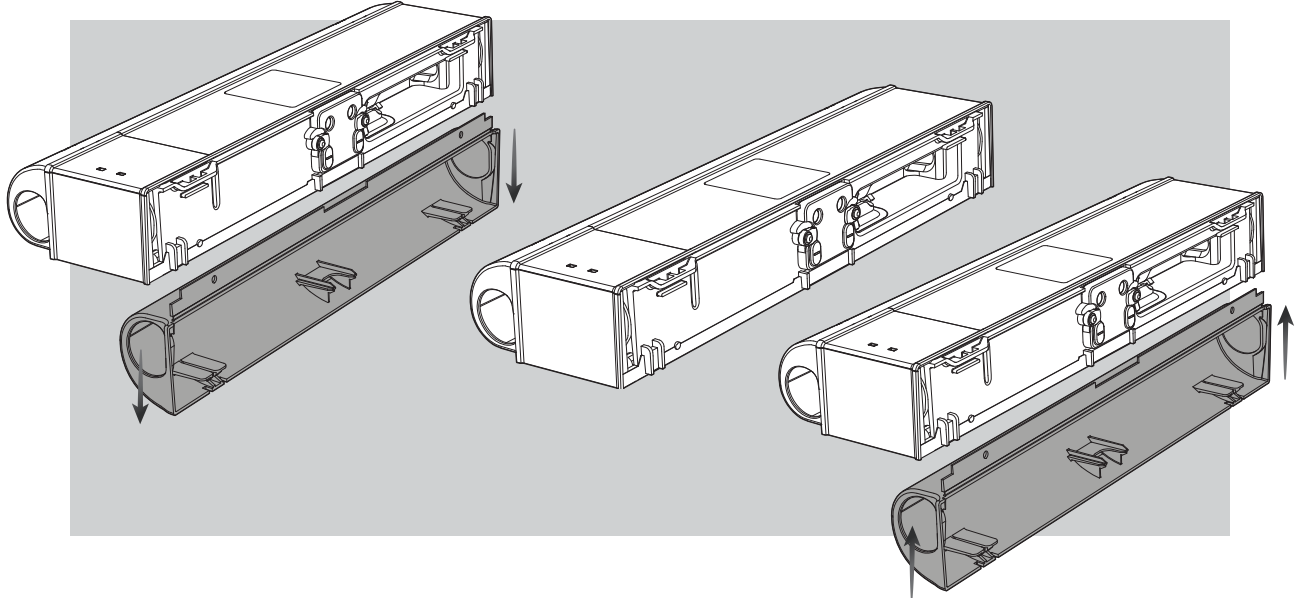
**NOTE:** The heart will display even if canister(s) are not loaded as there is no active electrical check for their presence. Therefore it is up to the technician to **ENSURE** viable CO<sub>2</sub> canister(s) are loaded when commissioning/servicing.

# How to Swap Trays

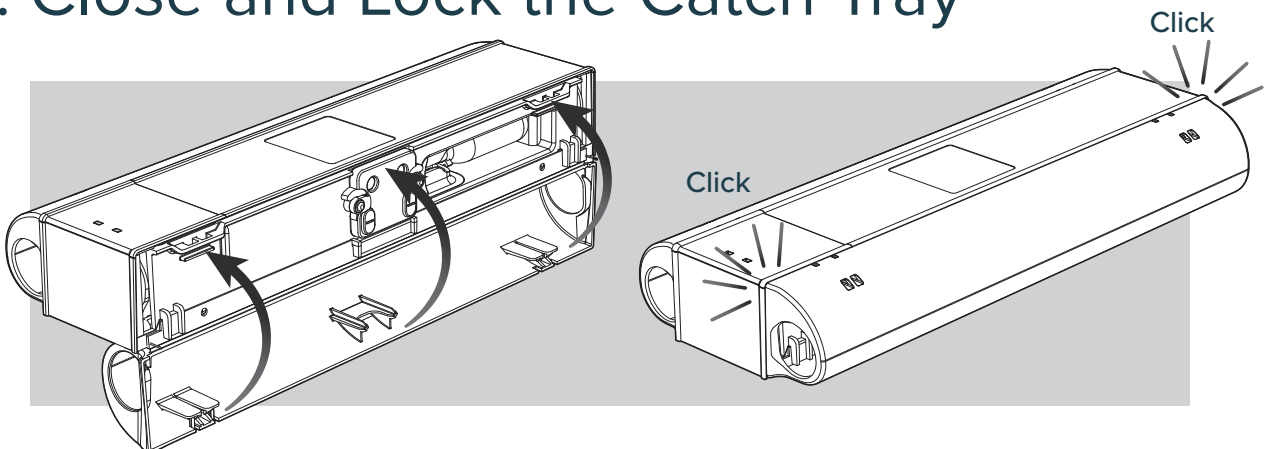
## 1. Open Catch Tray



## 2. Remove and Replace Catch Tray

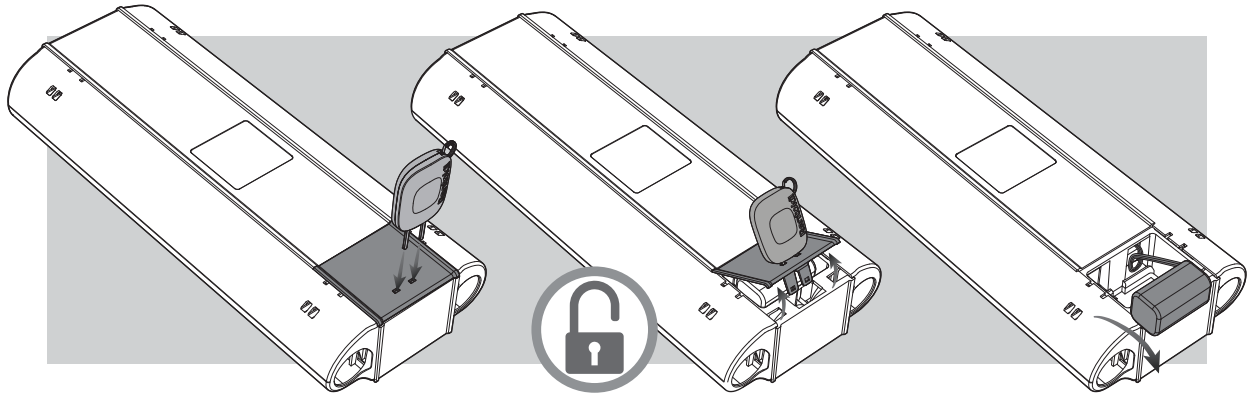


## 3. Close and Lock the Catch Tray

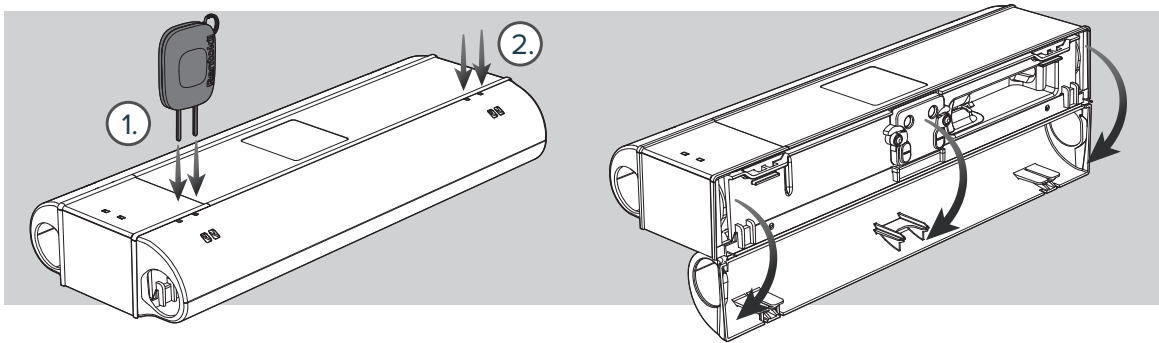


# How to Swap Sensor Pods

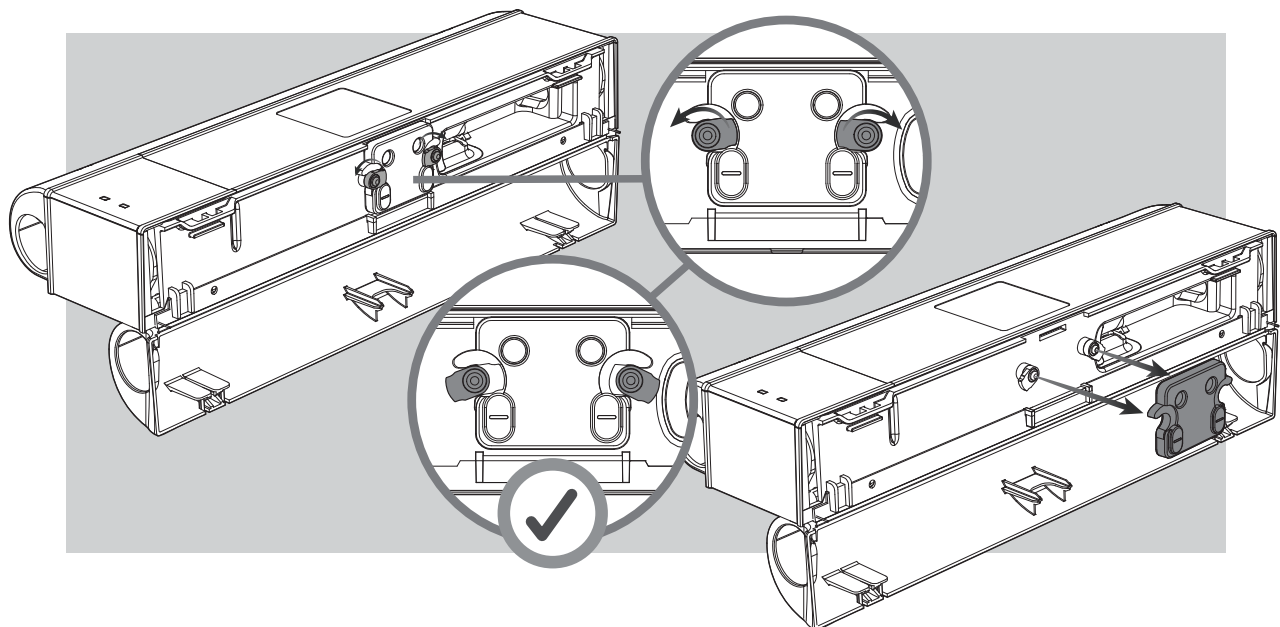
## 1. Remove Battery



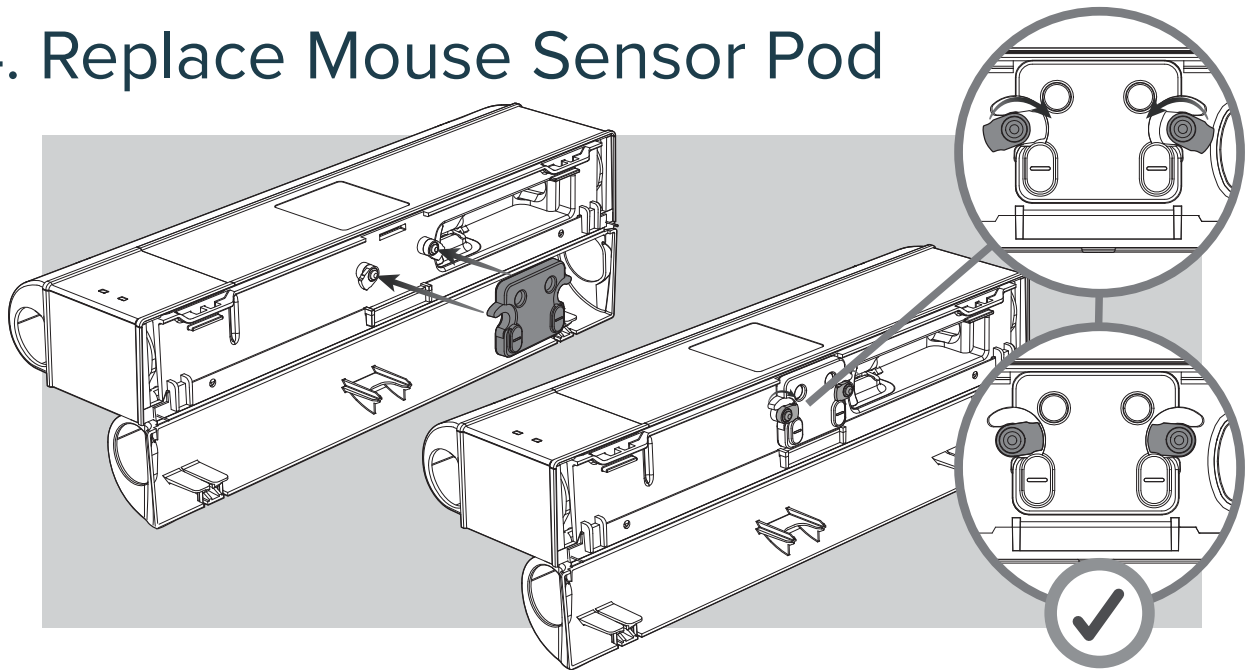
## 2. Open Catch Tray



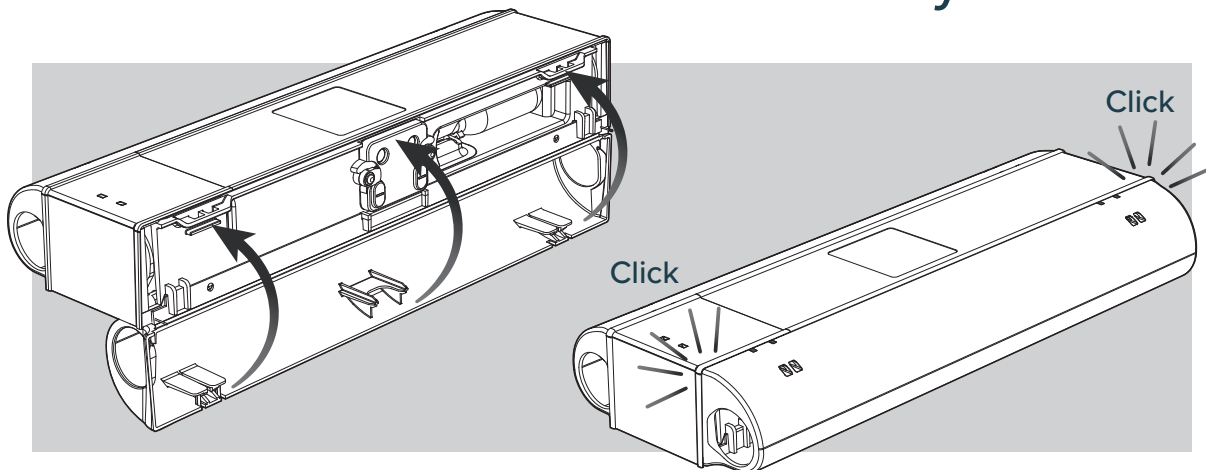
## 3. Remove Mouse Sensor Pod



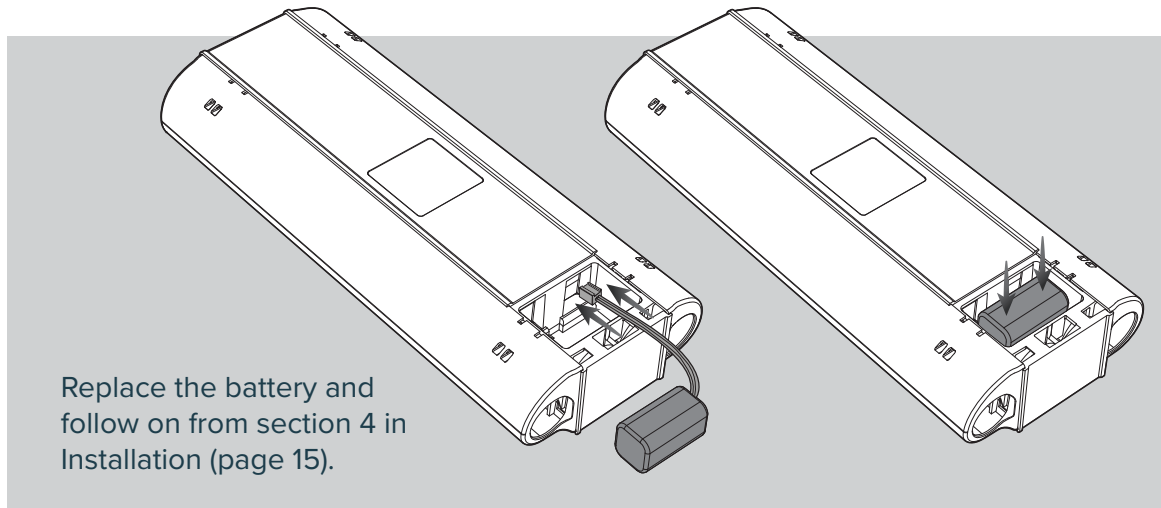
## 4. Replace Mouse Sensor Pod

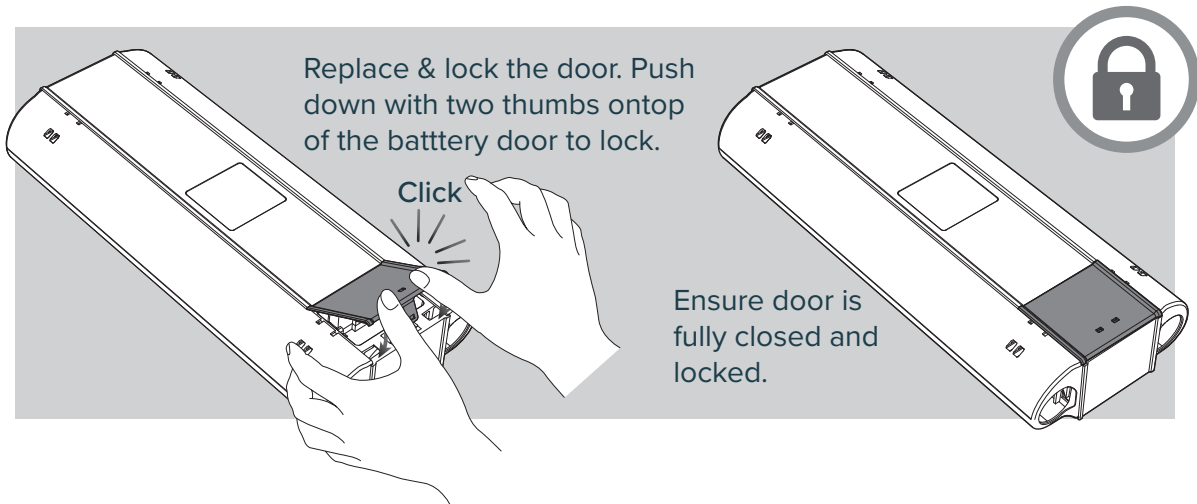
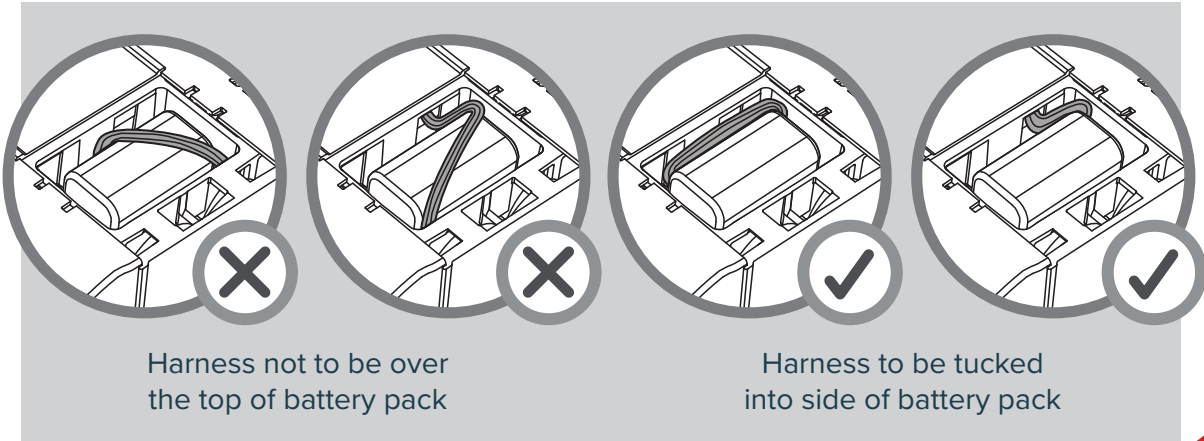


## 5. Close and Lock the Catch Tray



## 6. Reactivate the Trap

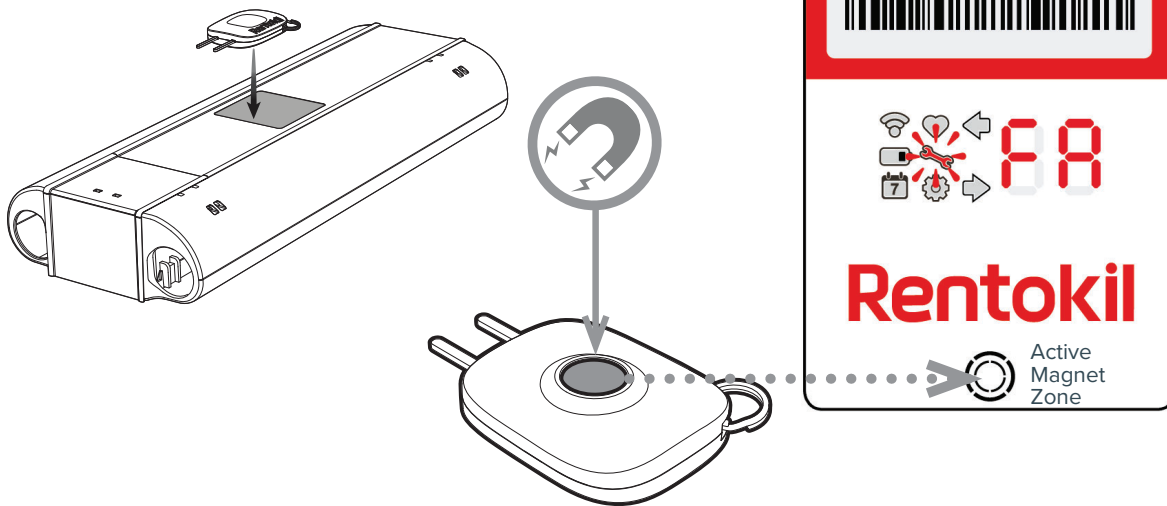




# System Information

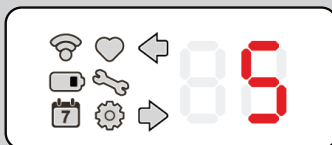
## Enter System Information

With the Interface active hold the **RI Key Magnet** in place to access System Information.



41B

### System Information Mode

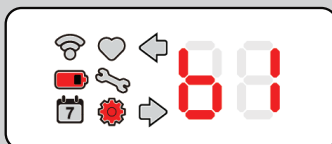


Eg: Count down appearing after 5 seconds



Holding the RI Magnet Key in place for ten seconds enters the System Information Mode. To access this mode, hold the key over the display for ten seconds. A five second count down will then be seen visually with the use of the LEDs.

To enter this mode on RADAR X Standard, hold the RI magnet key in place for 3 seconds. There is no countdown on the RADAR X Standard.

**NOTE:** Any release before the ten seconds are up will revert to the deploy action.



Eg: Alkaline battery is fitted

Once in System Information mode, it will display the Battery (Icon ) and Configuration (Icon ) along with the battery type.

Codes for Battery Type to be shown on Display

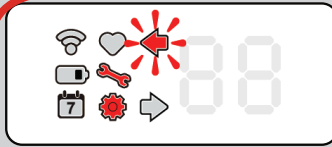
88 - Alkaline

8F - Unknown



41C

### Tap 1



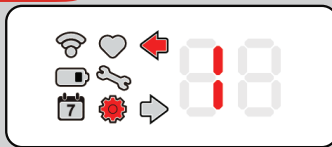
Eg: Major subversion  
firmware used

First tap using the RI Magnet Key will display Service Mode (Icon ) and Configuration (Icon ). Arrows will then indicate firmware version in the format major.minor.build eg. 03.06.0001


no arrows = major version - eg. 03  
both arrows = minor version - eg. 06  
left arrow = build (first two digits) - eg. 00  
right arrow = build (second two digits) - eg. 01

41D





### Tap 2



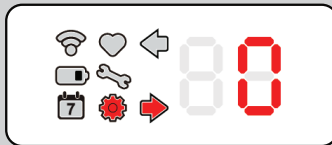
Eg: LHS has IR Pod fitted

Second tap using the RI Magnet Key will display Configuration (Icon ) and left arrow. Left digit will then indicate left pod type.


Codes for Pod Type to be shown on Display:

-  - Single Configuration Pod (Blank Pod)
-  - IR Pod
-  - Unknown
-  - No Pod Detected

### Tap 3



Eg: RHS has Blank Pod fitted

Third tap using the RI Magnet Key will display Configuration (Icon ) and right arrow. Right digit will then indicate right pod type. See codes above.

### Tap 4

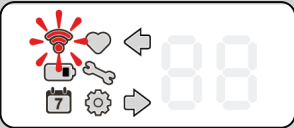
Cycles Interface back to battery check mode. The Interface will exit System Information if no action is made for 30 seconds, or if a Catch Tray is opened.

41E

# Operating the User Interface (UI)

**1 Connect LED Identifier**  
CONNECT devices only

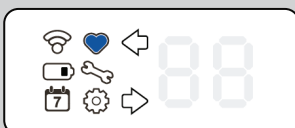
The user interface LEDs will indicate whether the device has signal/ is connected to the network



Eg: no signal, move position or gateway.

42A

**2 Device Status**



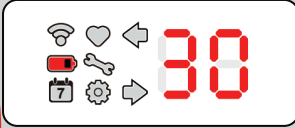
A solid blue or red heart identifies the unit as deployable. A service is complete, or no service is required.

**NOTE:** The heart will display even if canister(s) are not loaded as there is no active electrical check for their presence. Therefore it is up to the technician to **ENSURE** viable CO<sub>2</sub> canister(s) are loaded when commissioning/ servicing.

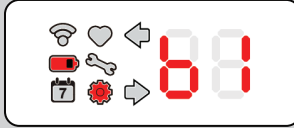
42B

**3 Battery Level**

Percentage of battery capacity remaining is displayed. When in System Information the battery type is displayed.



Eg: 30% battery remaining



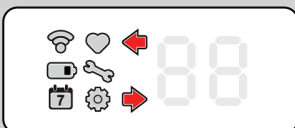
Eg: Alkaline battery used

Codes for battery type:  
88 = Alkaline  
8F = Unknown


42C

**4 Catch Duration**

Number of days since each chamber has been activated



Arrow Icons identify which chamber has activated



Eg: Right chamber activated 3 days ago

5

## Service Mode



Indicates a service is required when displayed with an error code, or indicates which catch tray is open and armed during a service.

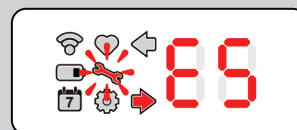
88 Indicates left catch tray open, not armed.

118 Indicates left catch tray open and armed.

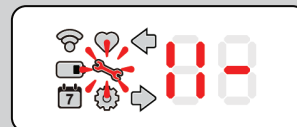
88 Indicates right catch tray open, not armed.

88 Indicates right catch tray open and armed.

118 Indicates both catch trays open and armed.



Eg: E5 error in RHS. See page 33 for codes.



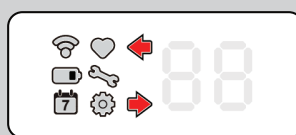
Eg: LHS catch tray open and armed

6

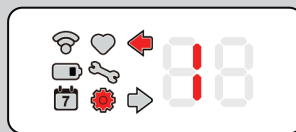
## Configuration



Icon displayed along side other icons during set-up or when in System Information, see page 29, displayed individually when 43 indicating pod type. See page 30.



Arrows identify pod side



Eg: IR sensing pod on left side

Digits indicate Pod Type (sensor board):

0 - Configuration Pod (Blank Pod)

1 - IR Pod

2 - Unknown

3 - No Pod Detected

# Error Codes

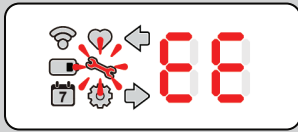
If RADAR X detects an error, it will self diagnose and display an Error Code during Status Check



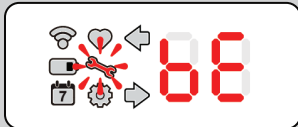
| Error Code                      | Status                               | Action                            |
|---------------------------------|--------------------------------------|-----------------------------------|
| EE                              | Change Battery                       | <20% charge, change battery       |
| bE                              | Cannot calculate battery %           | Consider battery change           |
| Er                              | Wait for error to clear              | See more information below        |
| SERVICE DEVICE                  |                                      |                                   |
| tr rt                           | tr: Pest trigger, rt: Remote trigger | Service device                    |
| E0                              | Tech test not complete               | Replace pod                       |
| E1                              | Possible live catch                  | See more information below        |
| E2                              | Triggered due to high temperature    | Area should be surveyed           |
| E3                              | Triggered: Shock: Check for damage   | Service unit and check for damage |
| E4                              | Unit moved: Check location/damage    | Service unit and check for damage |
| E5                              | Trigger pin not set                  | Set trigger pin: Service device   |
| E6                              | Check trigger pin/tray BOTH sides    | Check trigger pin/tray BOTH sides |
| E7                              | Unit remotely disabled               | Check reason/Service device       |
| POD/TRAY ISSUE - SERVICE DEVICE |                                      |                                   |
| CL                              | Clean Sensors/Catch Tray             | See more information below        |
| E8                              | Catch Tray Open                      | Check Catch Tray condition        |
| E9                              | Change Sensor Pod                    | Change Sensor Pod                 |
| TECH TEST                       |                                      |                                   |
| EA                              | Do manual trigger test               | See more information below        |
| FATAL - RETURN UNIT             |                                      |                                   |
| FA                              | Decommission/Return Unit             | Decommission/Return Unit          |

# Error Code Details

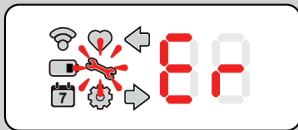
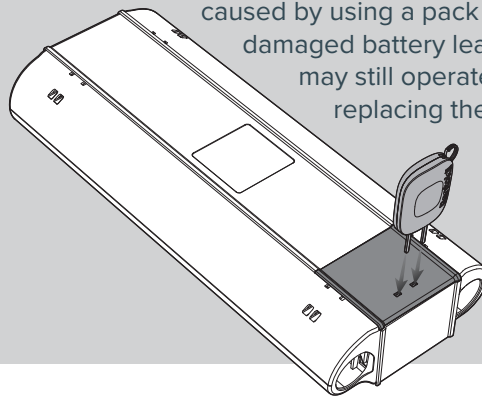
Why might I be seeing this / how to fix?



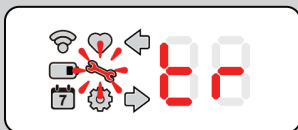
The battery is too low or too high a voltage to reliably run the system in the environment for which it is specified. You must replace the battery pack.



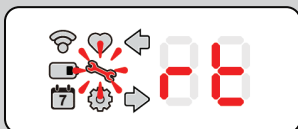
The unit is currently designed for 3 wire alkaline batteries. The packs used have a method of reporting to RADAR X what battery technology has been fitted. If for some reason this can't occur then the unit is unable to calculate the battery %. This could be caused by using a pack not supplied by Rentokil, or a damaged battery lead or to the battery itself. The unit may still operate, but you should consider replacing the battery pack.



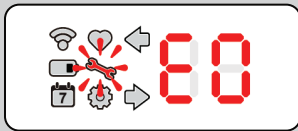
This is a generic error code. Where there is something in the system preventing the unit from operating as intended. At the time of this manual's first release, the only issue that would cause this code is if on connecting the battery, the RADAR X sees a temperature above the safe level (for instance, taking it from a hot service van). Under normal situation, if deployed would cause the unit to trigger to protect the CO<sub>2</sub> canister from rupturing. You should wait 15 minutes after the unit has had time to cool (keep the unit powered). The unit if left powered during this time will update the Er code should the unit detect the temperature reducing.



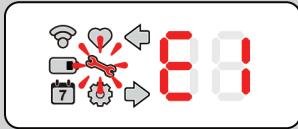
The unit triggered due to the sensors detecting activity, there were no issues detected in activation. This is the "normal" indicator that the RADAR X has trapped and everything is okay.



The unit was triggered remotely by the server. You can service it and it will be rearmed and operational, however you should understand why it might have been activated triggered remotely in the first instance before doing this.



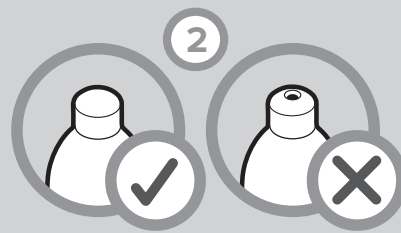
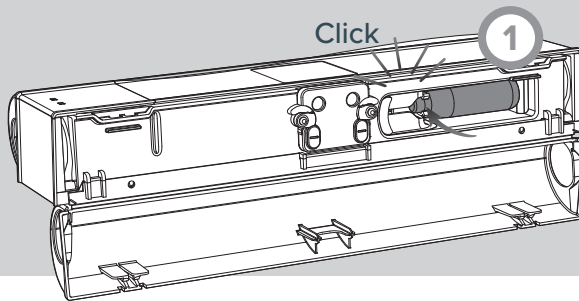
Manual pod test not passed - replace pod.



There are temperature sensors that sit above each CO<sub>2</sub> canister. When the canister discharges the temperature drops and this is detected by the RADAR X, if this temperature drop is not seen this error will be raised. Possible causes of seeing this error are:

1. Canister was not loaded at time of commissioning/servicing.
2. Canister was empty prior to the current triggered event.
3. Damaged catch tray/unit which allowed CO<sub>2</sub> to escape.
4. Blunt or damaged piercing head.

If it were an actual live catch then this should be managed as per your region's protocol, it may be necessary to return both the unit **and** the canister in question for inspection.



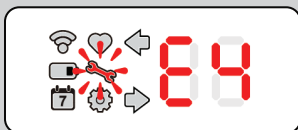
The CO<sub>2</sub> canisters are rated at a temperature of up to 50°C. After which they run the risk of rupture. The RADAR X will prevent this by triggering prior to reaching the upper threshold of 50°C. You should survey the installed area to ensure that the unit is not placed in an area that gets to these temperatures.



The unit triggered its CO<sub>2</sub> due to a heavy impact. Possible causes of seeing this error are:

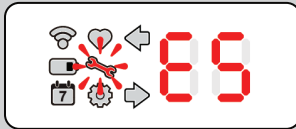
1. Unit was dropped from a height.
2. Unit sustained an external impact from something for e.g. vehicle, or excessive foot traffic, etc.

The unit must be Serviced and inspected for damage/cracks/chips. In particular the catch trays, and their clips, main chassis and ensure there is no additional “rattling” noise for instance when the unit is shaken slightly. Provided no issues are visible and the unit can be deployed then the unit can continue to be used.

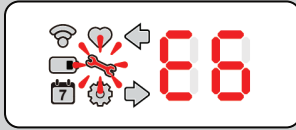


The unit moved/sustained a shock which didn't cause it to trigger, but it may not be positioned where it should so you should check the floor plan app, as well as inspect it for damage as in E3 above; the unit must be Serviced and inspected for damage/cracks/chips.

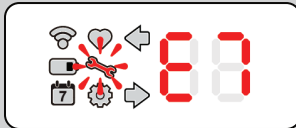




The trigger pin has not been locked in place. You may have armed the red doors, but failed to move the trigger pin into the locked armed position. Go back into Service mode and you must arm the trigger pin.



Not deployed, unit could not self deploy or was not service correctly. **Both** catch sides of the unit are in a state that renders the unit non functional. This could be the catch tray not closing properly, trigger pin not set - or combination of these, see E0

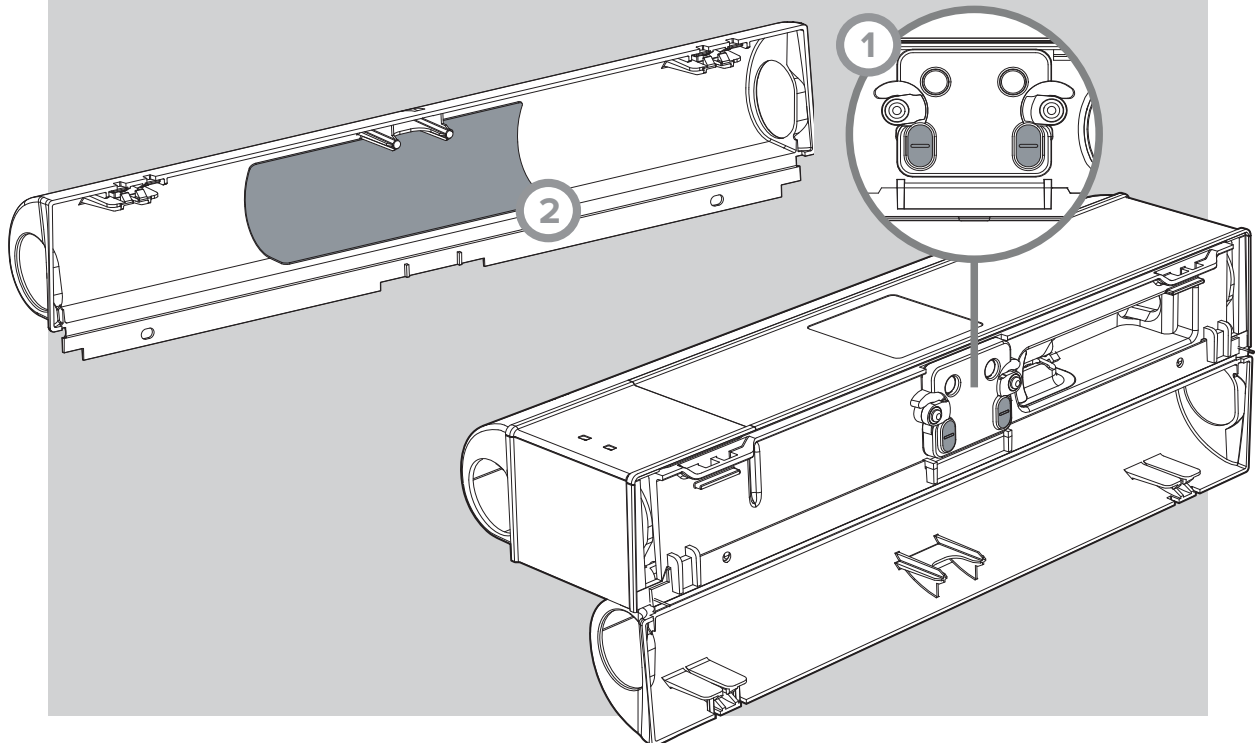


The unit has been disabled from triggering remotely by the server, you will only ever see this on a Connect RADAR X. You can service it and it will be rearmed and operational, however you should understand why it might have been deactivated remotely in the first instance before doing this.



It has been detected that the sensor enabling the unit to detect mice has reduced capability for some reason. For an IR sensor pod, this means that one or both of the sensors within the pod are reading below what they should. For IR sensor pod this could be due to:

1. Dirty/Scratched lens. Clean or replace the sensor pod.
2. Black label on catch tray dirty/damaged. Clean or replace the catch tray.
3. Other contamination, foreign objects in the sensing area. Clean the area of debris, insects, webs, water, dust, etc.

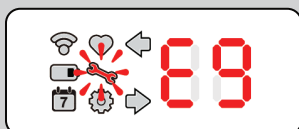
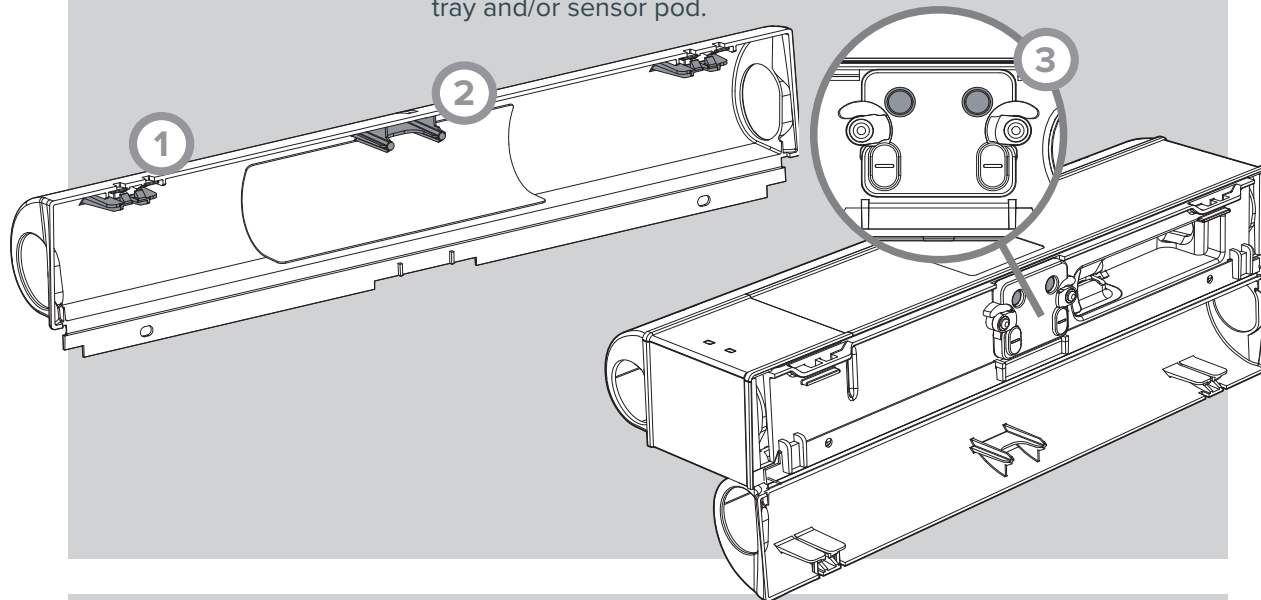




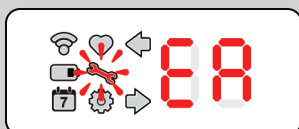
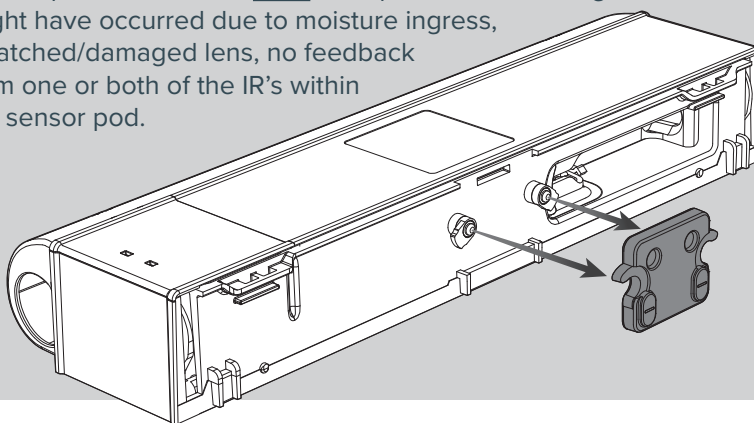
Tray is being detected as opened. Inspect:

1. Catch tray is closed and the clips of the tray and main housing are in good condition.
2. Catch tray “fingers” which press into the sensor pod are in working order (not bent or broken).
3. Sensor pod rubber pads, where the catch tray fingers engage with, are not damaged.

Depending on the findings, you may need to replace the catch tray and/or sensor pod.



Sensor pod has failed. It must be replaced. The damage might have occurred due to moisture ingress, scratched/damaged lens, no feedback from one or both of the IR's within the sensor pod.



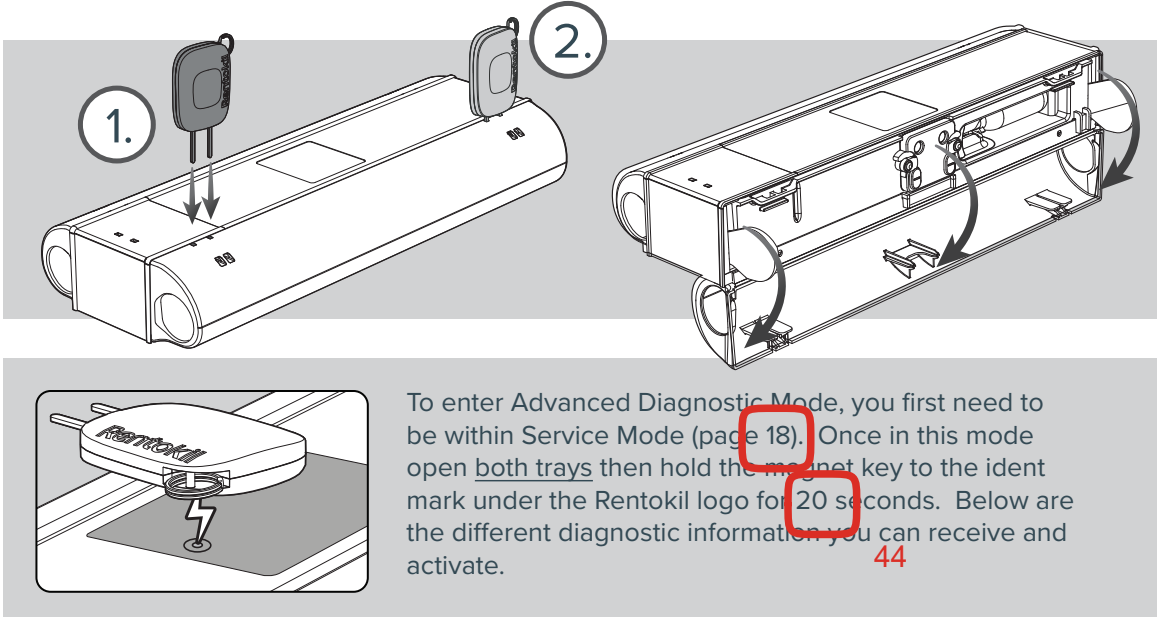
There was an issue with the trigger mechanism, this code will allow you to go into a tech mode that allows you to trigger the unit using the service key. Before doing this read and understand the “Motor Test” section as it involves moving parts and potentially CO<sub>2</sub> escaping with the catch trays open.



If a unit is detected as non functional such as continual “CL” on both sides or a Manual test shows the unit is still faulty, then you will see this error and the unit must be decommissioned from site and CO<sub>2</sub> canisters and battery removed.

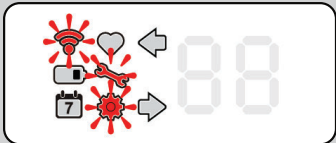
# Advanced Diagnostic Mode



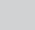
## Enter Advanced Diagnostic Mode



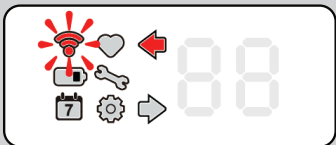
### 1. LED Test


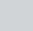
#### LED Test Mode



On entering LED Test Mode, Service Mode (Icon ) and Configuration (Icon ) flash, along with the Connect LED Identifier (Icon ) flashing red.

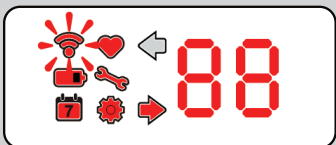
#### Tap 1





First tap in LED Test Mode. Connect LED Identifier (Icon ) flashes red and the Left arrow (Icon ) is turned on.

45

#### Tap 2



Second tap in LED Test Mode. Connect LED Identifier (Icon ) flashes red and Left arrow (Icon ) is turned off. All other icons and digit segments are turned on.

45

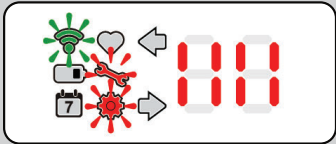
### Tap 3

45




Cycles back to the display seen after Tap 1.  
At any point during these taps, holding the service key in place for 3 seconds moves the interface to the next diagnostic mode; Motor Test.

## 2. Motor Test

### Motor Test Mode



Eg: The trigger pins on both the LHS and RHS are armed.

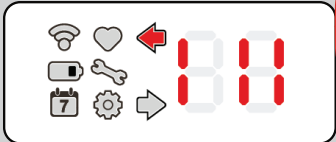
On entering Motor Test Mode, Service Mode (Icon ) and Configuration (Icon ) flash, along with the Connect LED Identifier (Icon ) flashing green.

46A

Trigger pin armed status will be displayed as a double bar on the appropriate side.

**Warning:** During this Motor Test the piercing piston will fire when in the armed position, regardless if the catch tray is in the opened or closed position. Therefore ensure you keep body parts away from the CO<sub>2</sub> canister cradle region.

### Tap 1

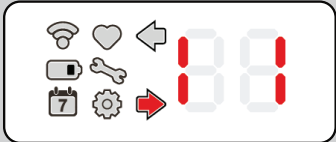


The motor on the left side is triggered. The trigger pin status is updated on the display.

E.g: The inner of the two vertical lines on the left-hand side is removed.  
The outer line will remain as the left catch tray is still open.

46B

### Tap 2



The motor on the right side is triggered. The trigger pin status is updated on the display.

E.g: The inner of the two vertical lines on the right-hand side is removed.  
The outer line will remain as the right catch tray is still open.

46B

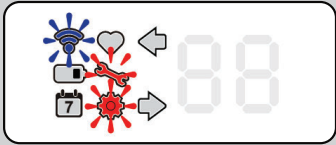
### Tap 3




At any point during these taps, holding the service key in place for 3 seconds moves the interface to the next diagnostic mode; Temperature test

46B

### 3. Temperature Test

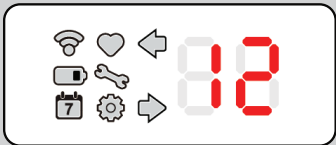
#### Temp Test Mode



On entering Temperature Test Mode, Service Mode (Icon ) and Configuration (Icon ) flash, along with the Connect LED Identifier (Icon ) flashing blue.

**Temperature is displayed in deg/C. If a negative temperature is displayed the digits flash at 1Hz.**

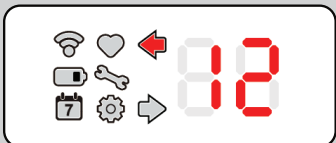
#### Tap 1




The internal temperature sensor reading is displayed.

Eg: The internal temperature of the unit is 12°C

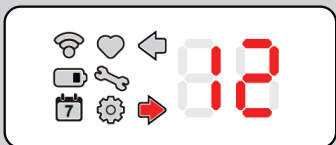
#### Tap 2




The left arrow (Icon ) and the left temperature sensor reading is displayed.

Eg: The left temperature reading is 12°C

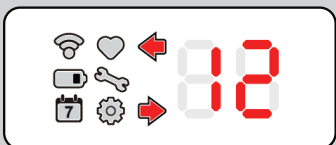
#### Tap 3


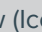


The right arrow (Icon ) and the right temperature sensor reading is displayed.

Eg: The right temperature reading is 12°C

#### Tap 4



Both the right arrow (Icon ) and left arrow (Icon ) illuminate and the microprocessor temperature sensor reading is displayed.

Eg: The microprocessor temperature is 12°C

#### Tap 5

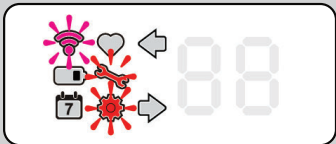
Cycles back to the display seen after Tap 1.



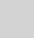
At any point during these taps, holding the service key in place for 3 seconds moves the interface to the next diagnostic mode; Accelerometer test.

47

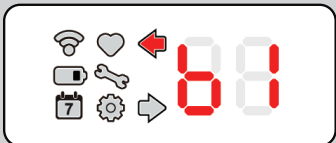
## 4. Accel Test

### Accel Test Mode




On entering Accel Test Mode, Service Mode (Icon ) and Configuration (Icon ) flash, along with the Connect LED Identifier (Icon ) flashing magenta.

### Tap 1



Eg: Alkaline battery used

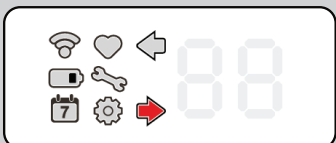
The left arrow (Icon ) lights up and the battery type is displayed.

Codes for battery type:

 = Alkaline

 = Unknown

### Tap 2



The Right arrow (Icon ) lights up and the accelerometer triggers are displayed.

### Tap 3

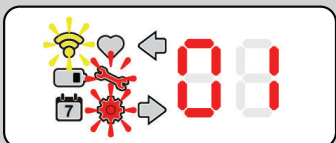
Cycles back to the display seen after Tap 1.

48



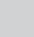
At any point during these taps, holding the service key in place for 3 seconds moves the interface to the next diagnostic mode; Side Pod tests.

## 5. Side Pod Tests

### Side Pod Test Mode



Eg: Configuration pod fitted on left side, IR pod fitted on right side.

On entering Side Pod Test Mode, Service Mode (Icon ) and Configuration (Icon ) flash, along with the Connect LED Identifier (Icon ) flashing yellow.

Digits indicate Pod Type (sensor board):

Left pod type is displayed on left digits, and right pod type is displayed on right digits.

 - Configuration Pod (Blank Pod)

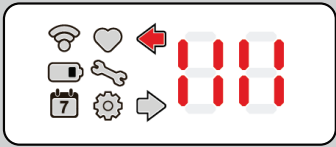
 - IR Pod

 - Unknown

 - No Pod Detected



### Tap 1

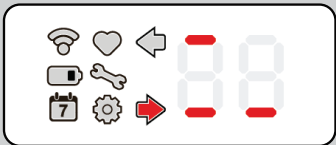


Trigger pin armed status will be displayed as a double bar on the appropriate side.

Eg: The trigger pins are set and the catch trays are open on both sides.

49B

### Tap 2



Eg: Both left pods sensors triggered, and right sensor in right pod

The top and bottom bars of the digits are illuminated to indicate which sensors have been triggered.

88- Left pod, left sensor triggered

88- Left pod, right sensor triggered

88- Right pod, left sensor triggered

88- Right pod, right sensor triggered

49B

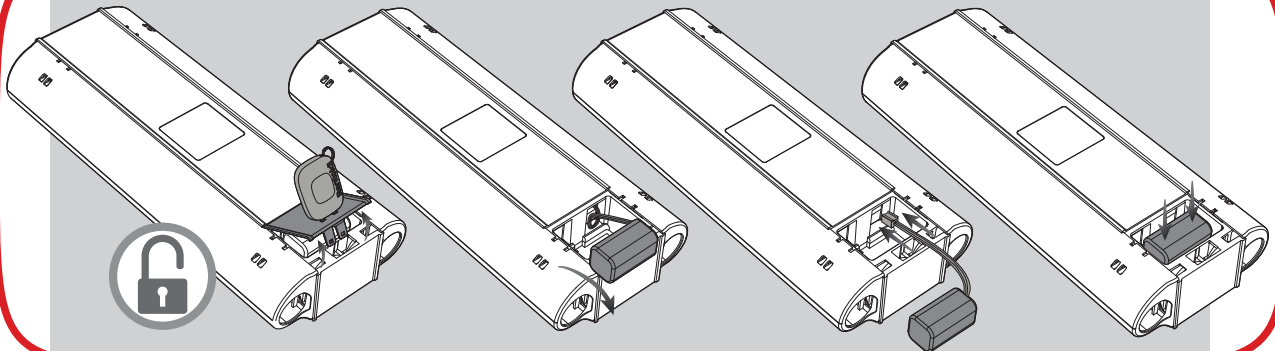
### Tap 3

Cycles Interface back to Side Pod Test Mode screen.

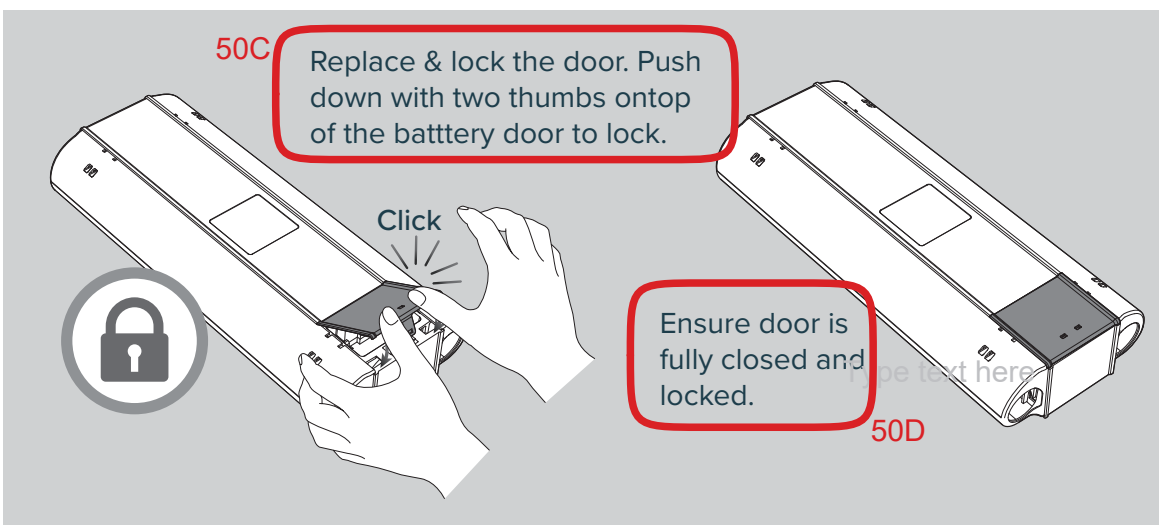
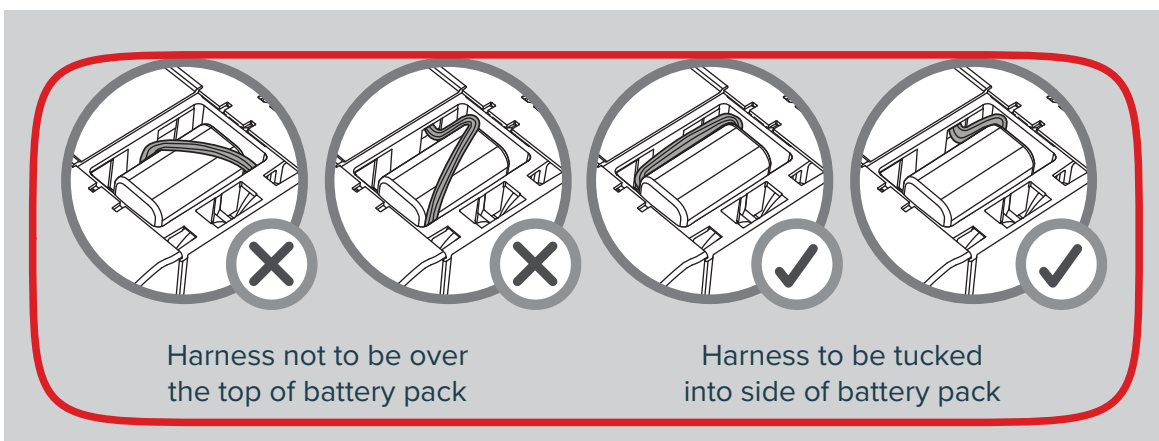
## 6. Exit Advanced Diagnostic Mode

To exit Advanced Diagnostic Mode the device must be powered cycled by removing and reconnecting the battery.

50A



50B



# Further Information

## Technical Details

| Power Supply                 |   |                                      |
|------------------------------|---|--------------------------------------|
| Battery Details              | Use only Rentokil battery packs<br>6v output - 4 x AA cell battery pack<br>-5°C to 50°C (23°F to 122°F) Operating Temperature range |                                      |
| Physical                     |   |                                      |
| Dimensions (Dual)            | 313mm x 49mm x 127mm (12.31" x 1.94" x 5.02")   |                                      |
| Weight (Dual)                | 561g (19.79oz)  | [Excluding gas canister and battery] |
| Material                     | ABS, POM and PP.  |                                      |
| Operating Temperature        | -5°C to 50°C  | ( 23°F to 122°F)                     |
| Storage Temperature          | -20°C to 65°C   | ( -4°F to 149°F)                     |
| Environmental Rating         | IP65  |                                      |
| CO <sub>2</sub> Gas Canister | Use only Rentokil approved 8g CO <sub>2</sub> gas canister.   |                                      |
| LoRaWAN® Connect Only        |   |                                      |
| Interface                    | 868-928MHz depending on local Approvals<br>LoRaWAN ® Application Layer Protocol   | 51C                                  |

## Product Code Summary

52A

| SKU    | Product                  |
|--------|--------------------------|
| 304839 | RADAR X Standard         |
| 306002 | RADAR X Connect LW EU/UK |
| 306003 | RADAR X Connect LW NA    |
| 306004 | RADAR X Connect LW AU/NZ |
|        |                          |

52B

| SKU    | Accessories           |
|--------|-----------------------|
| 304751 | Pest Key              |
| 304838 | RADAR X Catch Tray    |
| 304876 | Alkaline Battery Pack |
|        |                       |

52B

# Approvals

FCC PART 15 CLASS B, and CE compliant

## FCC Warning Statement:

- This device complies with Part 15 of the FCC Rules.  
Operation is subject to the following two conditions:  
(1) This device may not cause harmful interference, and  
(2) This device must accept any interference received, including interference that may cause undesired operation.
- This equipment complies with FCC radiation exposure limits set forth for an uncontrolled environment. End users must follow the specific operating instructions for satisfying RF exposure compliance. This transmitter must not be co-located or operating in conjunction with any other antenna or transmitter. This equipment should be installed and operated with minimum distance 20cm between the radiator & your body.
- Changes or modifications not expressly approved by the party responsible for compliance could void the user's authority to operate the equipment.
- Note: This equipment has been tested and found to comply with the limits for a Class B digital device, pursuant to part 15 of the FCC Rules. These limits are designed to provide reasonable protection against harmful interference in a residential installation. This equipment generates uses and can radiate radio frequency energy and, if not installed and used in accordance with the instructions, may cause harmful interference to radio communications. However, there is no guarantee that interference will not occur in a particular installation. If this equipment does cause harmful interference to radio or television reception, which can be determined by turning the equipment off and on, the user is encouraged to try to correct the interference by one or more of the following measures:
  - Reorient or relocate the receiving antenna.
  - Increase the separation between the equipment and receiver.
  - Connect the equipment into an outlet on a circuit different from that to which the receiver is connected.
  - Consult the dealer or an experienced radio/TV technician for help.

53



**R-NZ**  
RI supplier ID: E7690

54

# Rentokil

55B

Neither the whole nor any part of the information described in this manual, nor the product therein described, may be adapted or reproduced in any form without prior written approval of Rentokil.

55C

The product described in this manual is subject to continuous development and improvement and Rentokil reserve the right to alter the specification or design without prior notice. Rentokil cannot accept any liability for any loss or damage arising from the use of any information contained within this manual, or from any incorrect use of the product described herein. Rentokil can accept no liability whatsoever for any loss or damage arising from the product being serviced maintained or repaired by unauthorised personnel.

For more information about Rentokil visit [www.rentokil.com](http://www.rentokil.com)  
Registered Design - refer to [www.rentokil-initial.com/ip](http://www.rentokil-initial.com/ip)

55D

© 2024 RENTOKIL INITIAL 1927 plc ALL RIGHTS RESERVED

2024 Rentokil Initial plc. Registered in England and Wales 224814.  
Registered office: Rentokil Initial 1927 plc, Compass House,  
Manor Royal, Crawley, West Sussex, RH10 9PY, UK.  
The names Rentokil® and Initial® are registered trademarks

Rentokil Initial Limited, Hazel House, Millennium Park, Naas, Co. Kildare  
Ireland.

For US:  
Manufactured for:  
Rentokil North America, Inc.  
1125 Berkshire Blvd.  
Suite 150  
Wyomissing, PA 19610  
United States

Imported by:  
Target Speciality products, 710 Corporate Center Drive, Berks  
Coporate Center Building 7, Reading, PA 19605  
United States, 888-225-6080

55E

GSD-160579 V6