



U.S. ENVIRONMENTAL PROTECTION AGENCY
 Office of Pesticide Programs
 Biopesticides and Pollution Prevention Division (7511P)
 1200 Pennsylvania Ave., N.W.
 Washington, D.C. 20460

EPA Reg. Number:

87093-11

Date of Issuance:

2/10/2020

NOTICE OF PESTICIDE:

Registration
 Reregistration
 (under FIFRA, as amended)

Term of Issuance:

Unconditional

Name of Pesticide Product:

Herbicidal Concentrate

LNouvel, Inc.
 4657 Courtyard Trail
 Plano, TX 75024

Note: Changes in labeling differing in substance from that accepted in connection with this registration must be submitted to and accepted by the Biopesticides and Pollution Prevention Division prior to use of the label in commerce. In any correspondence on this product, always refer to the above EPA Registration Number.

On the basis of information furnished by the registrant, the above named pesticide is hereby registered under the Federal Insecticide, Fungicide, and Rodenticide Act (FIFRA or the Act).

Registration is in no way to be construed as an endorsement or recommendation of this product by the U.S. Environmental Protection Agency (EPA). In order to protect health and the environment, the Administrator, on his or her motion, may at any time suspend or cancel the registration of a pesticide in accordance with the Act. The acceptance of any name in connection with the registration of a product under the Act is not to be construed as giving the registrant a right to exclusive use of the name or to its use if it has been covered by others.

This product is unconditionally registered in accordance with FIFRA section 3(c)(5) provided that you:

1. Submit and/or cite all data required for registration or registration review of your product when the EPA requires all registrants of similar products to submit such data.
2. Submit storage stability and corrosion characteristics (Guidelines 830.6317 and 830.6320) data as these data requirements are not satisfied. A one-year study is required to satisfy these data requirements. You have 18 months from the date of this registration to provide these data to the EPA.

Signature of Approving Official:

Andrew Bryceland, Team Leader
 Biochemical Pesticides Branch
 Biopesticides and Pollution Prevention Division (7511P)
 Office of Pesticide Programs

Date:

2/10/2020

3. Make the following labeling change before you release this product for shipment:
 - Revise the EPA Registration Number to read, "EPA Reg. No. 87093-11."
4. Submit one (1) copy of the final printed labeling for the record before you release this product for shipment.

Should you wish to add/retain a reference to your company's website on your label, then please be aware that the website becomes labeling under FIFRA and is subject to review by the EPA. If the website is false or misleading, the product will be considered to be misbranded and sale or distribution of the product is unlawful under FIFRA section 12(a)(1)(E). 40 CFR § 156.10(a)(5) lists examples of statements the EPA may consider false or misleading. In addition, regardless of whether a website is referenced on your product's label, claims made on the website may not substantially differ from those claims approved through the registration process. Therefore, should the EPA find or if it is brought to our attention that a website contains false or misleading statements or claims substantially differing from the EPA-approved registration, the website will be referred to the EPA's Office of Enforcement and Compliance Assurance.

Your release for shipment of this product constitutes acceptance of these terms. If these terms are not complied with, this registration will be subject to cancellation in accordance with FIFRA section 6. A stamped copy of the labeling is enclosed for your records. Please also note that the record for this product currently contains the following acceptable Confidential Statement of Formula (CSF):

- Basic CSF dated 05/31/2019

Any CSFs other than those listed above are superseded.

If you have any questions, please contact James Parker by phone at (703) 306-0469 or via email at parker.james@epa.gov.

Sincerely,



Andrew Bryceland, Team Leader
Biochemical Pesticides Branch
Biopesticides and Pollution
Prevention Division (7511P)
Office of Pesticide Programs

Enclosure

Use of [Brackets] indicate optional text
Use of {Braces} indicates Note to Reviewer

{MASTER LABEL – Unless otherwise noted, all text shown prior to the start of sub-label A will be present on both sub-labels: sub-label A, and sub-label B when final printed labeling is prepared.}

Herbicide Concentrate

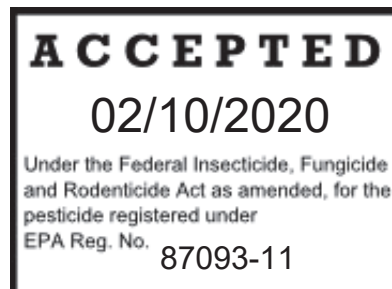
[Home and Garden Use]

ACTIVE INGREDIENT:

Ammonium nonanoate.....22%

OTHER INGREDIENTS:.....78%

Total: 100%



**KEEP OUT OF REACH OF CHILDREN
WARNING**

See Back Panel/Booklet for First Aid and additional Precautionary Language

EPA REG. NO. 87093-RR

EPA EST. No.

LNouvel, Inc.
4657 Courtyard Trail
Plano, TX 75024

NET CONTENTS:

FIRST AID	
IF IN EYES	-Hold eye open and rinse slowly and gently with water for 15-20 minutes. Remove contact lenses, if present, after the first 5 minutes, then continue rinsing eye. -Call a poison control center or doctor for treatment advice
IF ON SKIN OR CLOTHING	-Take off contaminated clothing. -Rinse skin immediately with plenty of water for 15-20 minutes. -Call a poison control center or doctor for treatment advice.
IF SWALLOWED	-Call a poison control center or doctor immediately for treatment advice. -Have person sip a glass of water if able to swallow. -Do not induce vomiting unless told to by a poison control center or doctor. -Do not give anything by mouth to an unconscious person.
IF INHALED	-Move person to fresh air. -If person is not breathing call 911 or an ambulance, then give artificial respiration, preferably mouth-to-mouth, if possible. -Call a poison control center or doctor for further treatment advice.
Have the product container or label with you when calling a poison control center, or doctor, or going for treatment. For information on this pesticide product (including general health concerns or pesticide incidents), call the National Pesticide Information Center at 1-800-858-7378, Monday through Friday, 8:00 AM to 12:00 PM Pacific Standard Time [or registrant's number]. For medical emergencies, call the poison control center at 1-800-222-1222 [or registrant's number].	

PRECAUTIONARY STATEMENTS

HAZARDS TO HUMANS AND DOMESTIC ANIMALS

WARNING: Causes substantial but temporary eye injury. Causes skin irritation. Harmful if inhaled. Avoid breathing vapor or spray mist. Do not get in eyes, on skin or on clothing. Wear eye protection (goggles, face shield or safety glasses), long-sleeved shirt, long pants, socks, shoes and rubber gloves. After this product is diluted in accordance with label directions, eye protection, gloves and long sleeves are not required. Wash thoroughly with soap and water after handling. Remove contaminated clothing and wash before reuse.

ENVIRONMENTAL HAZARDS

This product may be hazardous to aquatic invertebrates. Do not apply directly to water. To protect the environment, do not allow pesticide to enter or run off into storm drains, drainage ditches, gutters or surface waters. Applying this product in calm weather when rain is not predicted for the next 24 hours will help to ensure that wind or rain does not blow or wash pesticide off the treatment area. Rinsing application equipment over the treated area will help avoid run off to water bodies or drainage systems.

{MASTER LABEL – Unless otherwise noted, all text shown prior to the start of sub-label A will be present on both sub-labels: sub-label A, and sub-label B when final printed labeling is prepared.}

{Sub-Label A for Control of Weed and Grass, Algae and Moss}

DIRECTIONS FOR USE

It is a violation of Federal Law to use this product in a manner inconsistent with its labeling. Read and follow all directions and precautions on this product label.

Product Information

HERBICIDAL CONCENTRATE is a fast-acting, non-selective weed and grass, algae and moss killer. This product is not translocated. It will burn only those plant parts that are coated with spray solution. The best results are obtained with young, actively growing weeds, less than 5 inches high. HERBICIDAL CONCENTRATE can be used any time during the year and works best during warm and dry conditions. Application during cold weather may delay appearance of plant damage. If rain falls within 3 hours of treatment, an additional spray may be required. HERBICIDAL CONCENTRATE controls many common annual weeds and suppresses the growth of some bi-annual and perennial weeds. It can be used in cultivated areas prior to planting grass, flowers and vegetables. Areas can be re-sown five days after treatment. Inadvertent overspray of HERBICIDAL CONCENTRATE does not stain concrete, pavement, stucco or wood.

Application Directions

For use on products without a hose-end sprayer.

{Note to reviewer: either of the following application directions may be used on the final printed labeling when it is prepared.}

{Option 1}

Shake well before using. Mix one part HERBICIDAL CONCENTRATE with 5 parts water (26 fl oz in 1 gallon of water).

Alternatively, for small, easy-to-kill weeds, mix one part HERBICIDAL CONCENTRATE with 9 parts water (14 fl oz in 1 gallon water).

Apply the mixed solution at 2.5 - 7.5 gallons/1,000 ft² (3 - 9 fl. oz/yard²).

{Option 2}

Shake well before using. Mix 26 fl oz of HERBICIDAL CONCENTRATE in 1 gallon of water and spray weeds until runoff.

Apply the mixed solution at 2.5 - 7.5 gallons/1,000 ft² (3 - 9 fl. oz/yard²).

Any standard handheld or backpack sprayer can be used. Spray weeds thoroughly, using a coarse nozzle setting to reduce drift. Thorough coverage is extremely important. For spot treatment of individual weed, apply the mixed solution to the center of plant to the point of runoff. Plant damage will be visible from a few hours to 2 days after spraying. Repeat treatment every 2 to 3 weeks to control new weeds growing from seed and re-growth from bi-annual and perennial weeds. Avoid spraying desirable plants. Thoroughly wash equipment after use.

For use on products with a hose-end sprayer

Shake well before using.

Apply the contents of this container to [250][500][1000] square feet.

Take care to avoid spray or runoff onto desirable plants to prevent plant damage. If rain falls within one day of treatment, an additional application may be required. Repeat treatment annually or when new weed and grass, or moss or algae is visible.

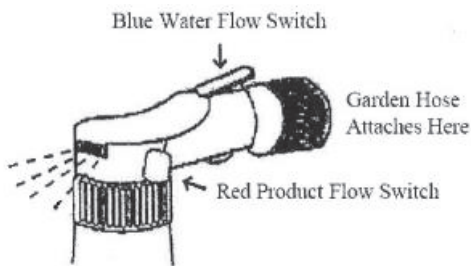
Thoroughly wash equipment after use.

{Note to reviewer: may use any of the following optional instructions for hose end sprayers}

Ensure that the hose end sprayer delivers product at a 1:20 dilution rate.

How to Use This Sprayer: Shake Container Well Before Getting Started

1. Before you start, the blue flow switch should be in the 'OFF' position, and the red flow switch should be in the up, 'CLOSED' position.
2. Shake container well and attach it to your garden hose, while holding sprayer at waist level and pointing in a direction away from face and body.
3. Turn on water from the faucet.
4. When you are ready to spray, turn the blue flow switch to 'ON' position; turn red flow switch to the forward, 'OPEN' position, and begin spraying.
5. When you are finished spraying or if you have to stop spraying at any time, turn the blue flow switch back to the 'OFF' position and the red flow switch to the 'CLOSED' position.
6. Turn off the water at the faucet.
7. Remove the container from the garden hose; then rinse thoroughly and store according to storage instructions.

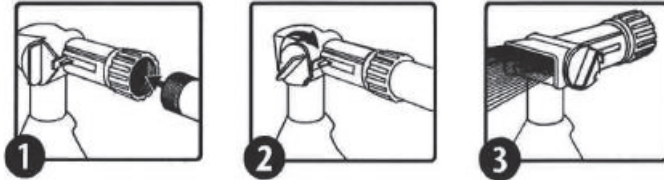


[OR]

1. Attach garden hose to spray nozzle. Turn on water supply.
2. Bend safety tab down and turn control to "water".
3. Point nozzle toward plants and turn water control knob to "On". Product will automatically mix with water. Spray upper and lower leaf surfaces thoroughly.

To Stop Spraying:

1. When you are finished spraying or if you have to stop spraying at any time, turn the blue knob back to the OFF position.
2. Turn off the water from the faucet.
3. Turn the blue knob to H2O then OFF, to drain the water from the hose.
4. Unscrew spray nozzle from hose. Remove hose end from container.
5. Reseal the container with the child-resistant closure. Rinse the hose-end applicator



[OR]

To Use This Sprayer

1. Shake container well.
2. Connect spray nozzle to garden hose.
3. Turn on the water from the faucet.

When you are ready to spray, turn the knob on the front so that the arrow points to the MIX position. The product will automatically siphon and mix with water.

4. When spraying be sure to soak the targeted site thoroughly.

To Stop Spraying

1. When you are finished spraying or if you have to stop spraying at any time, turn the knob back to the OFF position.
2. Turn off the water from the faucet.
3. Discharge residual water pressure by turning the knob on the front so that it points to the WATER position.
4. Unscrew spray nozzle from hose.

[Optional diagram may accompany above instructions:]

[OR]

HOW TO APPLY

APPLY AT THE RATE OF 27 FL.OZ. OF THIS PRODUCT TO COVER UP TO 500 SQ.FT.

1. Measure the entire area to be sprayed. For rectangular areas, multiply the length by width to obtain total square feet.
2. See below for directions for the ready-to-use hose-end sprayer.
3. Spray evenly over the entire measured area.

Amount of Herbicidal	Provides Coverage of Area Size:
[13.5 fl oz]	[250 ft ²]
[27 fl oz]	[500 ft ²]
[54 fl oz]	[1000 ft ²]

Connect

- Shake well before using.
- Connect sprayer to hose.
- Turn on water.
- Extend hose to farthest area of the measures area to be treated.

Spray

- To begin spraying, point nozzle in the direction you want to spray.
- Slide thumb activation switch forward to ON [MIX] position.
- Spray evenly over measured area.

Finish

- To STOP spraying, slide thumb activation switch backward to OFF position.
- Turn off water.
- Relieve water pressure by sliding thumb switch to WATER ONLY position until water slows to a drip. Then, slide switch back to OFF position.
- Disconnect sprayer from hose.

Use Sites:

{Note to reviewer: either of the following use site descriptions may be used on the final printed labeling when it is prepared}

{Option 1}

Grapes, small fruits, vines, tomatoes, vegetables (e.g., artichokes, beans, corn, ginseng, herbs, peas, peanuts, potatoes, sugarbeets, sunflowers, sweet potatoes and yams).

Ornamental herbaceous plants, ornamental lawns and turf, ornamental woody shrubs and vines and ornamental shade trees.

Around and on buildings, sidewalks, fences, bark mulch, driveways, patios and gravel.

{Option 2}

Use on weeds within vegetable and flower gardens, landscaped areas, and lawns. Also use on weeds in the vicinity of small fruits and fruit trees.

Around and on buildings, sidewalks, fences, bark mulch, driveways, patios and gravel.

Pests:

Weeds controlled or suppressed by HERBICIDAL CONCENTRATE include the following:

- chickweed *Stellaria media*
- corn spurry *Spergula arvensis*
- dandelion *Taraxacum* spp .
- groundsel *Senecio* spp .
- lamb's-quarters *Chenopodium album*
- mouse-eared chickweed *Cerastium vulgatum*
- mustards *Brassica* spp .
- plantain *Plantago* spp .
- redroot pigweed *Amaranthus retroflexus*
- round leaved mallow *Malva* spp .
- sheep sorrel *Rumex acetosel/a*
- shepherd's-purse *Capsella bursa-pastoris*
- stinkweed *Thlaspi arvense*
- thistle *Cirsium* spp .
- annual bluegrass *Poa annua*
- large crabgrass *Digitaria sanguinalis*
- perennial ryegrass *Lolium perenne*
- creeping red fescue *Festuca rubra*

- hard fescue *Festuca ovina*
- colonial bentgrass *Agrostis tenuis*
- moss, algae, and lichens

{End of Sub-Label A: for Control of Weed and Grass, Algae and Moss}

{MASTER LABEL – Unless otherwise noted, all text shown prior to the start of sub-label A will be present on both sub-labels: sub-label A, and sub-label B when final printed labeling is prepared.}

{Sub-Label B: For Control of Moss and Algae}

DIRECTIONS FOR USE

It is a violation of Federal Law to use this product in a manner inconsistent with its labeling. Read and follow all directions and precautions on this product label.

Product Information

Herbicidal Concentrate is a fast-acting moss and algae killer for structural surfaces. This product is not translocated. It will burn only those plant parts that are coated with spray solution. The best results are obtained with actively growing moss in the spring or fall. Herbicidal Concentrate can be used any time of the year. During warmer weather apply late in the day. Application during cold weather may delay appearance of moss damage. Inadvertent overspray does not stain concrete, pavement, stucco or wood. It can be used on moss and algae on and around buildings, sidewalks, fences, trees, bark mulch, driveways, patios and gravel.

Use Sites

Herbicidal Concentrate LN1 may be used to control moss and algae on and around homes and other buildings and home greenhouses. This product can be used on roofs, cedar shakes and composition shingles, cedar siding, stucco, cedar, redwood and CCA-treated wood decks and fences, patios, walks, bricks, stone and concrete walkways, sidewalks and driveways, other structural surfaces, bark mulch, pavement, gravel, patios and asphalt

Pests

Herbicidal Concentrate is effective in controlling mosses and algae.

Application Directions

For use on products without a hose-end sprayer.

Shake well before using.

Mix one part Herbicidal Concentrate with 19 parts water (6.8 fl oz in 1 gallon of water).

Apply the mixed solution at 8.3-25 gallons per 1,000 ft² (10-30 fl. oz/yard²).

{or alternately:}

Apply the mixed solution at 0.8-2.5 gallons per 100 ft² (10-30 fl oz/yard²)

Any standard handheld or backpack sprayer can be used. Spray weeds thoroughly, using a coarse nozzle setting to reduce drift. Thorough coverage is extremely important. For spot treatment of individual weed, apply the mixed solution to the center of plant to the point of runoff. Plant damage will be visible from a few hours to 2 days after spraying. Repeat treatment every 2 to 3 weeks to control new weeds growing from seed and re-growth from bi-annual and perennial weeds. Avoid spraying desirable plants. Thoroughly wash equipment after use.

For use on products with a hose-end sprayer

Shake well before using.

Apply the contents of this container to [250][500][1000] square feet.

For moss thicker than one inch use the higher rate. If moss is dry, thoroughly wet moss with water before treating.

{or alternately:}

Connect spray nozzle to garden hose. Turn on the water from the faucet. To water dry moss, turn the knob on the front so that the arrow points to the WATER position.

Take care to avoid spray or runoff onto desirable plants to prevent plant damage. If rain falls within one day of treatment, an additional application may be required. Repeat treatment annually or when new moss or algae is visible.

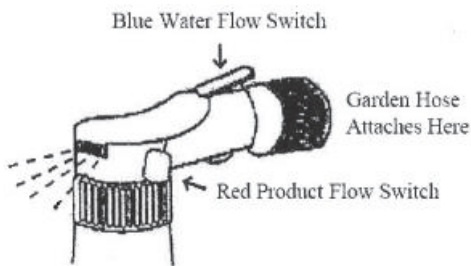
Thoroughly wash equipment after use.

{Note to reviewer: may use one of the following optional instructions for hose end sprayers}

Ensure that the hose end sprayer delivers product at a 1:20 dilution rate.

How to Use This Sprayer: Shake Container Well Before Getting Started

1. Before you start, the blue flow switch should be in the 'OFF' position, and the red flow switch should be in the up, 'CLOSED' position.
2. Shake container well and attach it to your garden hose, while holding sprayer at waist level and pointing in a direction away from face and body.
3. Turn on water from the faucet.
4. When you are ready to spray, turn the blue flow switch to 'ON' position; turn red flow switch to the forward, 'OPEN' position, and begin spraying.
5. When you are finished spraying or if you have to stop spraying at any time, turn the blue flow switch back to the 'OFF' position and the red flow switch to the 'CLOSED' position.
6. Turn off the water at the faucet.
7. Remove the container from the garden hose; then rinse thoroughly and store according to storage instructions.

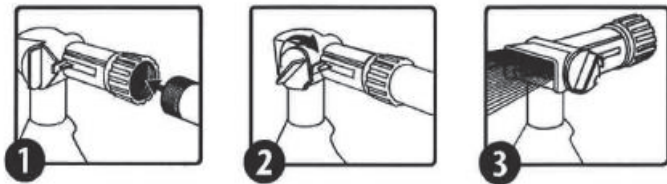


[OR]

1. Attach garden hose to spray nozzle. Turn on water supply.
2. Bend safety tab down and turn control to "water".
3. Point nozzle toward plants and turn water control knob to "On". Product will automatically mix with water. Spray upper and lower leaf surfaces thoroughly.

To Stop Spraying:

1. When you are finished spraying or if you have to stop spraying at any time, turn the blue knob back to the OFF position.
2. Turn off the water from the faucet.
3. Turn the blue knob to H2O then OFF, to drain the water from the hose.
4. Unscrew spray nozzle from hose. Remove hose end from container.
5. Reseal the container with the child-resistant closure. Rinse the hose-end applicator



[OR]

To Use This Sprayer

1. Shake container well.
2. Connect spray nozzle to garden hose.
3. Turn on the water from the faucet.

When you are ready to spray, turn the knob on the front so that the arrow points to the MIX position. The product will automatically siphon and mix with water.

4. When spraying be sure to soak the targeted site thoroughly.

To Stop Spraying

1. When you are finished spraying or if you have to stop spraying at any time, turn the knob back to the OFF position.
2. Turn off the water from the faucet.
3. Discharge residual water pressure by turning the knob on the front so that it points to the WATER position.
4. Unscrew spray nozzle from hose.

[Optional diagram may accompany above instructions:]

{OR}

HOW TO APPLY

APPLY AT THE RATE OF 27 FL.OZ. OF THIS PRODUCT TO COVER UP TO 500 SQ.FT.

1. Measure the entire area to be sprayed. For rectangular areas, multiply the length by width to obtain total square feet.
2. See below for directions for the ready-to-use hose-end sprayer.
3. Spray evenly over the entire measured area.

Amount of Herbicidal	Provides Coverage of Area Size:
[13.5 fl oz]	[250 ft ²]
[27 fl oz]	[500 ft ²]
[54 fl oz]	[1000 ft ²]

Connect

- Shake well before using.
- Connect sprayer to hose.
- Turn on water.
- Extend hose to farthest area of the measures area to be treated.

Spray

- To begin spraying, point nozzle in the direction you want to spray.
- Slide thumb activation switch forward to ON [MIX] position.
- Spray evenly over measured area.

Finish

- To STOP spraying, slide thumb activation switch backward to OFF position.
- Turn off water.
- Relieve water pressure by sliding thumb switch to WATER ONLY position until water slows to a drip. Then, slide switch back to OFF position.
- Disconnect sprayer from hose.

{End of Sub-Label B: For Control of Moss and Algae}

{MASTER LABEL – Unless otherwise noted, all text shown after the end of sub-label B will be present on both sub-labels: sub-label A, and sub-label B when final printed labeling is prepared.}

STORAGE AND DISPOSAL

PESTICIDE STORAGE: Store unused material, tightly closed, in original container only, away from open flame. Do not store at temperatures below 39°F.

PESTICIDE DISPOSAL AND CONTAINER HANDLING:

Nonrefillable container. Do not reuse or refill this container. **If empty:** Place in trash or offer for recycling if available. **If partly filled:** Call your local solid waste agency for disposal instructions. Never place unused product down any indoor or outdoor drain.

{Note to reviewer: may use any statement below or no statement}

NOTICE [TO BUYER]

The directions on this label are believed to be reliable and must be followed carefully. To the extent consistent with applicable law, seller warrants that this product conforms to the chemical description on this label and is reasonably fit for purposes stated on this label only when used in accordance with directions under normal use conditions. This warranty does not extend to use of this product contrary to label directions, or under abnormal use conditions, or under conditions not reasonably foreseeable to seller. Buyer assumes all risk of any such use. To the extent consistent with applicable law, seller makes no other warranties, either expressed or implied.

{OR}

The directions on this label are believed to be reliable and must be followed carefully. Buyer assumes all responsibility for safety and use not in accordance with directions.

{OR}

Seller makes no warranty, expressed or implied, concerning the use of this product other than indicated on the label. To the extent consistent with applicable law, buyer assumes all risk of use and/or handling of this material when such use and/or handling is contrary to label instructions.

LNouvel, Inc.
4657 Courtyard Trail
Plano, TX 75024

[Registrant's email address for product inquiries]

{Note to reviewer: the following optional claims and product information may or may not be presented on the product's market label and labeling:}

- The active ingredient in this product is exempted from the requirement of a tolerance for residues in or on all food commodities when used in accordance with good agricultural practice.
- For household use only
- Treated surfaces may be slippery when wet.
- Eliminates unwanted vegetation
- Eliminates unwanted moss and algae
- Won't stain bricks, concrete or asphalt
- Non-staining formula can be used on roofs, walks, decks and patios
- Kills within hours
- See results in hours
- Kills Weeds, Grass, Algae and Moss
- Kills Moss and Algae
- Kills Moss
- On Roofs, Decks, Patios, Walks, Bricks, and Cement
- Weed, Grass, Moss and Algae Killer
- Does not contain metal salts, such as iron or zinc.
- Will (Does) not damage gutters, metal flashing or downspouts.
- For best results use prior to establishment of heavy moss infestations.
- Economical Concentrate
- Do not spray on lawns or desirable plants
- This 13.5 [27][54] fl. oz. bottle will cover up to 250 [500][1000] square feet.
- This container treats {or} [will treat] up to 250 [500][1000] sq. ft.
- Kills (Controls) weeds, grass, algae and moss.
- Weed, grass, algae and moss killer can be used anytime of the year.
- Does not stain concrete or pavement.
- Does not stain concrete, pavement, stucco or wood
- Non-staining formula can be used on roofs, walks, decks and patios.
- Before ... After
- An herbicidal soap.
- For use) (on)(in)(around)(along): patios, walkways, driveways, flower beds, vegetable gardens, shrubs, trees, fences, foundations, other areas of your yard.
- Kills all types of weeds and grasses
- Visible results in hours
- Non-staining
- Container treats 250 [500][1000] sq.ft. (weeds)(area)

{Note to reviewer: Optional statements below that may be presented on the container or supplemental wording when product is packaged with a hose end sprayer}

- Hose-End Sprayer Directions
- Follow the directions for using the Hose-End sprayer.
- No mixing-no mess!
- Attach to garden hose and spray
- This product is ready to spray. Just attach this bottle to your garden hose according to directions. Water automatically mixes with the concentrate as you spray.
- Hose 'n Go!
- Ready-to-Spray