



## OFFICE OF CHEMICAL SAFETY AND POLLUTION PREVENTION

WASHINGTON, D.C. 20460

May 6, 2024

Ms. Cynthia Ann Smith  
Agent  
Bull Run Scientific, VBT  
3900 Westerre Parkway, Suite 300  
Richmond, Virginia 23233

**Subject:** Labeling Notification per Pesticide Registration Notice (PRN) 98-10 – Withdrawing and resubmitting previous notification from 4-22-24; adding optional text

Product Name: Bull Run Fly Attractant

EPA Registration Number: 84565-2

EPA Receipt Date: 04/23/2024

Action Case Number: 00608125

Dear Ms. Smith:

The U.S. Environmental Protection Agency is in receipt of your application for notification under Pesticide Registration Notice 98-10 for the above referenced product. The Biopesticides and Pollution Prevention Division has conducted a review of this request for its applicability under PRN 98-10 and finds that the actions requested fall within the scope of PRN 98-10.

The labeling submitted with this application has been stamped "Notification" and will be placed in our records. You must submit one (1) copy of the final printed labeling with the modifications. Should you wish to add/retain a reference to your company's website on your label, then please be aware that the website becomes labeling under the Federal Insecticide, Fungicide, and Rodenticide Act and is subject to review by the EPA. If the website is false or misleading, the product will be considered to be misbranded and sale or distribution of the product is unlawful under FIFRA section 12(a)(1)(E). 40 CFR § 156.10(a)(5) lists examples of statements the EPA may consider false or misleading. In addition, regardless of whether a website is referenced on your product's label, claims made on the website may not substantially differ from those claims approved through the registration process. Therefore, should the EPA find or if it is brought to our attention that a website contains statements or claims

Page 2 of 2

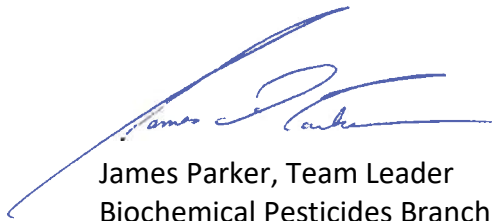
EPA Reg. No. 84565-2

Action Case No. 00608125

substantially differing from statements or claims made in connection with obtaining a FIFRA section 3 registration, the website will be referred to the EPA's Office of Enforcement and Compliance Assurance.

If you have any questions, please contact Nina Naimy via email at [naimy.nina@epa.gov](mailto:naimy.nina@epa.gov).

Sincerely,



James Parker, Team Leader  
Biochemical Pesticides Branch  
Biopesticides and Pollution  
Prevention Division (7511M)  
Office of Pesticide Programs

Enclosure

Bull Run Fly Attractant (EPA Reg. No. 84565-2)

April 23, 2024 Proposed Master Label Notification - Changes NOTED

Based upon the July 16, 2021 EPA ACCEPTED label.

[Adds as optional text to the Bull Run \[Small\] \[Medium\] \[Large\] Fly Trap Attractant label the label text for the associated trap.](#)[Adds "For Bull Run Large Fly Trap" to the associated attractant label.](#)

[ ] Denotes optional text. { } Denotes explanatory text for the reviewer.

# Bull Run Fly Attractant

## Master Label

### NOTIFICATION

84565-2

The applicant has certified that no changes, other than those reported to the Agency have been made to the labeling. The Agency acknowledges this notification by letter dated:

05/06/2024

Summary of Alternate Brand Name Products			
Alternate Brand Name	Description	Attractant Net Weight (Ounces)	Pages
Disposable Bull Run Medium Fly Trap	The attractant is packaged inside the trap and is not accessible to the user.	1.45	2-6
Disposable Bull Run Large Fly Trap	The attractant is packaged inside the trap and is not accessible to the user.	1.96	7-10
Bull Run Small Fly Trap Attractant	Attractant for the Bull Run Small Fly Trap. Packaged inside the Bull Run Small Fly Trap and sold separately as a refill for the Bull Run Small Fly Trap. Packaged in a printed vapor barrier pouch.	0.51	<del>11-15</del> <a href="#">11-17</a>
Bull Run Medium Fly Trap Attractant	Attractant for the Bull Run Medium Fly Trap. Packaged inside the Bull Run Medium Fly Trap and sold separately as a refill for the Bull Run Medium Fly Trap. Packaged in a printed vapor barrier pouch.	1.45	<del>16-19</del> <a href="#">18-23</a>
Bull Run Large Fly Trap Attractant	Attractant for the Bull Run Large Fly Trap. Packaged inside the Bull Run Large Fly Trap and sold separately as a refill for the Bull Run Large Fly Trap. Packaged in a printed vapor barrier pouch.	2.47	<del>20-23</del> <a href="#">24-29</a>
Bull Run Fly Attractant	Attractant for the Bull Run [Small] [Medium] [Large] Fly Trap. Packaged inside the Bull Run [Small] [Medium] [Large] Fly Trap and sold separately as a refill. Packaged in a printed vapor barrier pouch.	Not Specified	<del>24-27</del> <a href="#">30-33</a>
Tubular Bull Run Fly Trap: • Pedestal • Insert	The attractant is packaged inside the trap insert and is not accessible to the user. Sold with decorative cover.	0.51	<del>28-36</del> <a href="#">34-42</a>
Tubular Bull Run Fly Trap Insert	The attractant is packaged inside the trap insert and is not accessible to the user. Refill. Sold without decorative cover.	0.51	<del>37-40</del> <a href="#">43-46</a>

Bull Run Fly Attractant (EPA Reg. No. 84565-2)

April 23, 2024 Proposed Master Label Notification - Changes NOTED

Based upon the July 16, 2021 EPA ACCEPTED label.

[Adds as optional text to the Bull Run \[Small\] \[Medium\] \[Large\] Fly Trap Attractant label the label text for the associated trap.](#)

[Adds "For Bull Run Large Fly Trap" to the associated attractant label.](#)

[ ] Denotes optional text. { } Denotes explanatory text for the reviewer.

**Labeling Text for Use on Disposable Bull Run Medium Fly Trap**

{Front Panel, Disposable Bull Run Medium Fly Trap}

**Disposable  
Bull Run  
MEDIUM FLY TRAP**

INGREDIENTS	
<b>ACTIVE INGREDIENTS:</b>	
Sucrose . . . . .	42.1%
Putrescent Whole Egg Solids . . . . .	18.0%
Yeast . . . . .	5.5%
Trimethylamine . . . . .	2.8%
Indole . . . . .	0.2%
<b>OTHER INGREDIENTS . . . . .</b>	<b>31.4%</b>
<b>TOTAL . . . . .</b>	<b>100.0%</b>

**Keep Out of Reach of Children  
CAUTION**

**NET CONTENTS: 1.45 oz**

{Top Panel, Disposable Bull Run Medium Fly Trap}

Read instructions before opening.  
Cut here on dotted line.

Bull Run Fly Attractant (EPA Reg. No. 84565-2)

April 23, 2024 Proposed Master Label Notification - Changes NOTED

Based upon the July 16, 2021 EPA ACCEPTED label.

[Adds as optional text to the Bull Run \[Small\] \[Medium\] \[Large\] Fly Trap Attractant label the label text for the associated trap.](#)[Adds "For Bull Run Large Fly Trap" to the associated attractant label.](#)

[ ] Denotes optional text. { } Denotes explanatory text for the reviewer.

{Back Panel, Disposable Bull Run Medium Fly Trap}

----- Fill Line -----

*{Optional text:}***GENERAL INFORMATION:**

Provide the consumer with an easy, effective, economical and responsible way to control insect pests: That's the mission we set out to fulfill over 35 years ago.

This product is proven to trap the following species: House Fly, Lesser House Fly, Cluster Fly, Lance Fly, Secondary Screwworm Fly, Flesh Fly, False Stable Fly, Blow Flies and Bottle Flies.

**DIRECTIONS FOR USE:**

It is a violation of Federal law to use this product in a manner inconsistent with its labeling.

This is an outdoor [trap] [product]. Fill and use outdoors.

1. Cut plastic on top cap at dotted line.
2. Pull open and attach string or wire.
3. Add water to fill line on bag.
4. Hang trap outdoors near a fly source (garbage, compost pile, dog run, stable) to draw flies away from home entrances and outdoor living areas. Strong odor may occur if not placed in well-ventilated area.
5. Attractant pouch will dissolve and activate within 2-5 hours, creating an odor attractive to flies.
6. Replace trap when full, when contents dry out, or after 30 days - whichever comes first.
7. Close cap.
8. Deposit in trash for collection.
9. Wash hands with soap and water.

**Helpful Hints:** Weather conditions affect fly activity and trap effectiveness. In hotter temperatures, place traps in shade. In cooler temperatures, flies will be more active where it is warmer, so place traps in sun-exposed areas.

*{Optional text:}*

For more significant fly problems, look for larger capacity Bull Run Disposable and Reusable Fly Traps.

**STORAGE AND DISPOSAL**

Do not contaminate water, food or feed by storage or disposal.

**STORAGE:** Store in a cool, dry, well-ventilated location out of reach of pets and livestock.

**DISPOSAL:** Deposit in trash for collection. Wash hands with soap and water.

Bull Run Fly Attractant (EPA Reg. No. 84565-2)

April 23, 2024 Proposed Master Label Notification - Changes NOTED

Based upon the July 16, 2021 EPA ACCEPTED label.

[Adds as optional text to the Bull Run \[Small\] \[Medium\] \[Large\] Fly Trap Attractant label the label text for the associated trap.](#)

[Adds "For Bull Run Large Fly Trap" to the associated attractant label.](#)

[ ] Denotes optional text. { } Denotes explanatory text for the reviewer.

---

1-800-XXX-XXXX

EPA Reg. No. 84565-2

MADE IN USA

EPA Est. No. \_\_\_\_\_

Bull Run Scientific, VBT

3900 Westerre Parkway, Suite 300

Richmond, VA 23233

Bull Run Fly Attractant (EPA Reg. No. 84565-2)

April 23, 2024 Proposed Master Label Notification - Changes NOTED

Based upon the July 16, 2021 EPA ACCEPTED label.

[Adds as optional text to the Bull Run \[Small\] \[Medium\] \[Large\] Fly Trap Attractant label the label text for the associated trap.](#)[Adds "For Bull Run Large Fly Trap" to the associated attractant label.](#)

[ ] Denotes optional text. { } Denotes explanatory text for the reviewer.

**{Optional text/graphics for inclusion on any panel (Disposable Bull Run Medium Fly Trap):}**

- Model XXX
- Made in USA
- Non-toxic mode of action
- No killing agents - insects drown
- Effective and responsible
- Dissolves and activates in water
- Attractant dissolves and activates in water
- Add water - Subtract flies
- Just add water and hang
- Just add water and hang trap
- Easy to use - just add water
- Never touch bait or flies
- Sanitary; never touch the bait or flies
- Lets flies in, but not out
- Flies get in, but not out
- Naturally-occurring ingredients draw flies away from you
- Perfect for lawn, garden, camping and farm use
- Protect your outdoor living space from nuisance and filth flies
- Lure[s] flies away
- Catch[es] up to 20,000 flies
- Flies find it fast
- Complete with attractant
- Outdoor
- Outdoor use [trap]
- Need to catch flies indoors? Look for our TrapStik for Flies!

Established in \_\_\_\_\_, \_\_\_\_\_ offers traps and attractants for wasps, hornets, yellowjackets, flies, stink bugs, Japanese beetles and more. Look for these products at home improvement centers, hardware stores and lawn and garden retailers throughout the U.S. and beyond. For more information, visit our website at [www.\\_\\_\\_\\_\\_.com](http://www._____.com).

[www.\\_\\_\\_\\_\\_.com](http://www._____.com)

[Facebook F icon] \_\_\_\_\_

[twitter bird icon]@\_\_\_\_\_

© 2021 \_\_\_\_\_

- Brand logo

Bull Run Fly Attractant (EPA Reg. No. 84565-2)

April 23, 2024 Proposed Master Label Notification - Changes NOTED

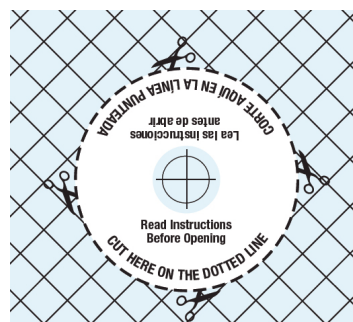
Based upon the July 16, 2021 EPA ACCEPTED label.

Adds as optional text to the Bull Run [Small] [Medium] [Large] Fly Trap Attractant label the label text for the associated trap.

Adds "For Bull Run Large Fly Trap" to the associated attractant label.

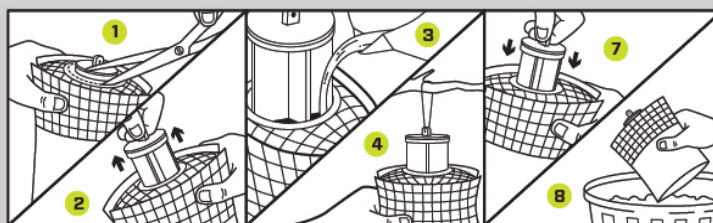
[ ] Denotes optional text. { } Denotes explanatory text for the reviewer.

{Optional graphics for inclusion on any panel (Disposable Bull Run Medium Fly Trap):}



{Optional graphics for inclusion in the Directions for Use (Disposable Bull Run Medium Fly Trap):}

***This product is proven to catch the following species:***  
*house fly, lesser house fly, cluster fly, lance fly, secondary screwworm fly, flesh fly, false stable fly, blow flies and bottle flies.*



↓ **FILL LINE Línea Indicadora** ↓



Bull Run Fly Attractant (EPA Reg. No. 84565-2)

April 23, 2024 Proposed Master Label Notification - Changes NOTED

Based upon the July 16, 2021 EPA ACCEPTED label.

[Adds as optional text to the Bull Run \[Small\] \[Medium\] \[Large\] Fly Trap Attractant label the label text for the associated trap.](#)

[Adds "For Bull Run Large Fly Trap" to the associated attractant label.](#)

[ ] Denotes optional text. { } Denotes explanatory text for the reviewer.

**Labeling Text for Use on Disposable Bull Run Large Fly Trap**

{Front Panel, Disposable Bull Run Large Fly Trap}

**Disposable  
Bull Run  
LARGE FLY TRAP**

INGREDIENTS	
<b>ACTIVE INGREDIENTS:</b>	
Sucrose . . . . .	42.1%
Putrescent Whole Egg Solids. . . . .	18.0%
Yeast . . . . .	5.5%
Trimethylamine . . . . .	2.8%
Indole . . . . .	0.2%
<b>OTHER INGREDIENTS.</b> . . . . .	<u>31.4%</u>
<b>TOTAL</b> . . . . .	<b>100.0%</b>

**Keep Out of Reach of Children  
CAUTION**

**NET CONTENTS: 1.96 oz**

{Top Panel, Disposable Bull Run Large Fly Trap}

Read instructions before opening.  
Cut here on dotted line.

Bull Run Fly Attractant (EPA Reg. No. 84565-2)

April 23, 2024 Proposed Master Label Notification - Changes NOTED

Based upon the July 16, 2021 EPA ACCEPTED label.

[Adds as optional text to the Bull Run \[Small\] \[Medium\] \[Large\] Fly Trap Attractant label the label text for the associated trap.](#)[Adds "For Bull Run Large Fly Trap" to the associated attractant label.](#)

[ ] Denotes optional text. { } Denotes explanatory text for the reviewer.

{Back Panel, Disposable Bull Run Large Fly Trap}

----- Fill Line -----

*{Optional text:}***GENERAL INFORMATION:**

Provide the consumer with an easy, effective, economical and responsible way to control insect pests: That's the mission we set out to fulfill over 35 years ago.

This product is proven to trap the following species: House Fly, Lesser House Fly, Cluster Fly, Lance Fly, Secondary Screwworm Fly, Flesh Fly, False Stable Fly, Blow Flies and Bottle Flies.

**DIRECTIONS FOR USE:**

It is a violation of Federal law to use this product in a manner inconsistent with its labeling.

This is an outdoor [trap] [product]. Fill and use outdoors.

1. Cut plastic on top cap at dotted line.
2. Pull open and attach string or wire.
3. Add water to fill line on bag.
4. Hang trap outdoors near a fly source (garbage, compost pile, dog run, stable) to draw flies away from home entrances and outdoor living areas. Strong odor may occur if not placed in well-ventilated area.
5. Attractant pouch will dissolve and activate within 2-5 hours, creating an odor attractive to flies.
6. Replace trap when full, when contents dry out, or after 30 days - whichever comes first.
7. Close cap.
8. Deposit in trash for collection.
9. Wash hands with soap and water.

**Helpful Hints:** Weather conditions affect fly activity and trap effectiveness. In hotter temperatures, place traps in shade. In cooler temperatures, flies will be more active where it is warmer, so place traps in sun-exposed areas.

**STORAGE AND DISPOSAL**

Do not contaminate water, food or feed by storage or disposal.

**STORAGE:** Store in a cool, dry, well-ventilated location out of reach of pets and livestock.

**DISPOSAL:** Deposit in trash for collection. Wash hands with soap and water.

1-800-XXX-XXXX

EPA Reg. No. 84565-2

EPA Est. No. \_\_\_\_\_

MADE IN USA

Bull Run Scientific, VBT  
3900 Westerre Parkway, Suite 300  
Richmond, VA 23233

Bull Run Fly Attractant (EPA Reg. No. 84565-2)

April 23, 2024 Proposed Master Label Notification - Changes NOTED

Based upon the July 16, 2021 EPA ACCEPTED label.

[Adds as optional text to the Bull Run \[Small\] \[Medium\] \[Large\] Fly Trap Attractant label the label text for the associated trap.](#)[Adds "For Bull Run Large Fly Trap" to the associated attractant label.](#)

[ ] Denotes optional text. { } Denotes explanatory text for the reviewer.

**{Optional text/graphics for inclusion on any panel (Disposable Bull Run Large Fly Trap):}**

- Model XXX
- Made in USA
- Non-toxic mode of action
- No killing agents - insects drown
- Effective and responsible
- Dissolves and activates in water
- Attractant dissolves and activates in water
- Add water - Subtract flies
- Just add water and hang
- Just add water and hang trap
- Easy to use - just add water
- Never touch bait or flies
- Sanitary; never touch the bait or flies
- No-mess disposal
- Lets flies in, but not out
- Flies get in, but not out
- Naturally-occurring ingredients draw flies away from you
- Perfect for lawn, garden, camping and farm use
- Protect your outdoor living space from nuisance and filth flies
- Lure[s] flies away
- Flies find it fast
- Designed for areas with heavy fly concentration
- Catch[es] up to 40,000 flies
- Complete with attractant
- Outdoor
- Outdoor use [trap]
- Need to catch flies indoors? Look for our TrapStik for Flies!

Established in \_\_\_\_\_, \_\_\_\_\_ offers traps and attractants for wasps, hornets, yellowjackets, flies, stink bugs, Japanese beetles and more. Look for these products at home improvement centers, hardware stores and lawn and garden retailers throughout the U.S. and beyond. For more information, visit our website at [www.\\_\\_\\_\\_\\_.com](http://www._____.com).

[www.\\_\\_\\_\\_\\_.com](http://www._____.com)

[Facebook F icon] \_\_\_\_\_

[twitter bird icon]@\_\_\_\_\_

© 2021 \_\_\_\_\_

- Brand logo

Bull Run Fly Attractant (EPA Reg. No. 84565-2)

April 23, 2024 Proposed Master Label Notification - Changes NOTED

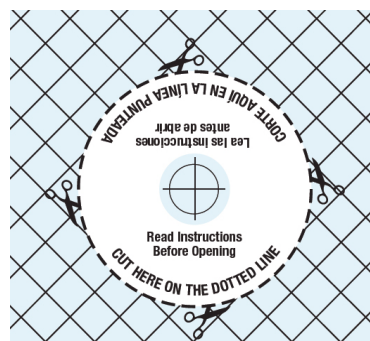
Based upon the July 16, 2021 EPA ACCEPTED label.

[Adds as optional text to the Bull Run \[Small\] \[Medium\] \[Large\] Fly Trap Attractant label the label text for the associated trap.](#)

[Adds "For Bull Run Large Fly Trap" to the associated attractant label.](#)

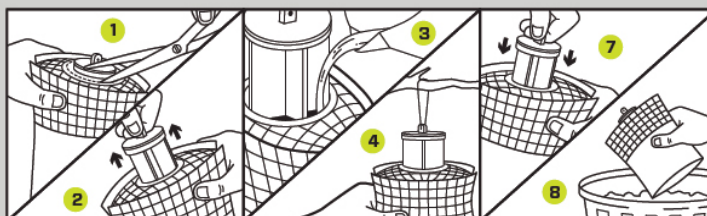
[ ] Denotes optional text. { } Denotes explanatory text for the reviewer.

{Optional graphics for inclusion on any panel (Disposable Bull Run Large Fly Trap):}



{Optional graphics for inclusion in the Directions for Use (Disposable Bull Run Large Fly Trap):}

***This product is proven to catch the following species:***  
*house fly, lesser house fly, cluster fly, lance fly, secondary screwworm fly, flesh fly, false stable fly, blow flies and bottle flies.*



← **FILL LINE Línea Indicadora** →

Bull Run Fly Attractant (EPA Reg. No. 84565-2)

April 23, 2024 Proposed Master Label Notification - Changes NOTED

Based upon the July 16, 2021 EPA ACCEPTED label.

[Adds as optional text to the Bull Run \[Small\] \[Medium\] \[Large\] Fly Trap Attractant label the label text for the associated trap.](#)

[Adds "For Bull Run Large Fly Trap" to the associated attractant label.](#)

[ ] Denotes optional text. { } Denotes explanatory text for the reviewer.

**Labeling Text for Use on Bull Run Small Fly Trap Attractant**

{Front Panel, Bull Run Small Fly Trap Attractant}

**Bull Run  
SMALL FLY TRAP ATTRACTANT**

<b>INGREDIENTS</b>	
<b>ACTIVE INGREDIENTS:</b>	
Sucrose . . . . .	42.1%
Putrescent Whole Egg Solids. . . . .	18.0%
Yeast . . . . .	5.5%
Trimethylamine . . . . .	2.8%
Indole . . . . .	0.2%
<b>OTHER INGREDIENTS. . . . .</b>	<b>31.4%</b>
<b>TOTAL . . . . .</b>	<b>100.0%</b>

**Keep Out of Reach of Children  
CAUTION**

**NET CONTENTS: 0.51 oz  
1 Packet**

Bull Run Fly Attractant (EPA Reg. No. 84565-2)

April 23, 2024 Proposed Master Label Notification - Changes NOTED

Based upon the July 16, 2021 EPA ACCEPTED label.

[Adds as optional text to the Bull Run \[Small\] \[Medium\] \[Large\] Fly Trap Attractant label the label text for the associated trap.](#)

[Adds "For Bull Run Large Fly Trap" to the associated attractant label.](#)

[ ] Denotes optional text. { } Denotes explanatory text for the reviewer.

{Back Panel, Bull Run Small Fly Trap Attractant}

{Optional text:}

#### **GENERAL INFORMATION:**

Provide the consumer with an easy, effective, economical and responsible way to control insect pests: That's the mission we set out to fulfill over 35 years ago.

This product is proven to trap the following species: House Fly, Lesser House Fly, Cluster Fly, Lance Fly, Secondary Screwworm Fly, Flesh Fly, False Stable Fly, Blow Flies and Bottle Flies.

#### **DIRECTIONS FOR USE:**

It is a violation of Federal law to use this product in a manner inconsistent with its labeling.

This is an outdoor [trap] [product]. Fill and use outdoors.

{Optional text:}

This product is proven to catch the following species: House Fly, Lesser House Fly, Cluster Fly, Lance Fly, Secondary Screwworm Fly, Flesh Fly, False Stable Fly, Blow Flies and Bottle Flies.

1. Tear open pouch at tabs and drop inner packet into trap.
2. Add water to fill line.
3. While holding lid in both hands, press up on the cone until the top piece snaps in place, creating an entrance for flies.
4. Replace lid securely.
5. Hang or place trap outdoors near a fly source.
6. Wash hands with soap and water.
7. Empty trap and rebait with a new Bull Run Small Fly [Trap] [Attractant] [Refill] when trap dries out or becomes full, or after 30 days - whichever comes first.

{Optional text:}

**Helpful Hints:** Weather conditions affect fly activity and trap effectiveness. In hotter temperatures, place traps in shade. In cooler temperatures, flies will be more active where it is warmer, so place traps in sun-exposed areas.

#### **STORAGE AND DISPOSAL**

Do not contaminate water, food or feed by storage or disposal.

**STORAGE:** Store in a cool, dry, well-ventilated location out of reach of pets and livestock.

**DISPOSAL:** Deposit in trash for collection. Wash hands with soap and water.

Bull Run Fly Attractant (EPA Reg. No. 84565-2)

April 23, 2024 Proposed Master Label Notification - Changes NOTED

Based upon the July 16, 2021 EPA ACCEPTED label.

[Adds as optional text to the Bull Run \[Small\] \[Medium\] \[Large\] Fly Trap Attractant label the label text for the associated trap.](#)

[Adds "For Bull Run Large Fly Trap" to the associated attractant label.](#)

[ ] Denotes optional text. { } Denotes explanatory text for the reviewer.

---

1-800-XXX-XXXX

EPA Reg. No. 84565-2

Made in USA

EPA Est. No. \_\_\_\_\_

Bull Run Scientific, VBT

3900 Westerre Parkway, Suite 300

Richmond, VA 23233

Bull Run Fly Attractant (EPA Reg. No. 84565-2)

April 23, 2024 Proposed Master Label Notification - Changes NOTED

Based upon the July 16, 2021 EPA ACCEPTED label.

[Adds as optional text to the Bull Run \[Small\] \[Medium\] \[Large\] Fly Trap Attractant label the label text for the associated trap.](#)[Adds "For Bull Run Large Fly Trap" to the associated attractant label.](#)

[ ] Denotes optional text. { } Denotes explanatory text for the reviewer.

**{Optional text/graphics for inclusion on any panel (Bull Run Small Fly Trap Attractant):}**

- Model XXX
- Made in USA
- Non-toxic mode of action
- No killing agents - insects drown
- Effective and responsible
- Dissolves and activates in water
- Attractant dissolves and activates in water
- Add water - Subtract flies
- Just add water and hang
- Just add water and hang trap
- Easy to use - just add water
- Never touch bait or flies
- Sanitary; never touch the bait or flies
- Lets flies in, but not out
- Flies get in, but not out
- Naturally-occurring ingredients draw flies away from you
- Perfect for lawn, garden, camping and farm use
- Protect your outdoor living space from nuisance and filth flies
- Lure[s] flies away
- Flies find it fast
- For the Bull Run Small Reusable Fly Trap
- For use with the Bull Run Small Reusable Fly Trap
- Outdoor
- Outdoor use [trap]
- Need to catch flies indoors? Look for our TrapStik for Flies!

Established in \_\_\_\_\_, \_\_\_\_\_ offers traps and attractants for wasps, hornets, yellowjackets, flies, stink bugs, Japanese beetles and more. Look for these products at home improvement centers, hardware stores and lawn and garden retailers throughout the U.S. and beyond. For more information, visit our website at [www.\\_\\_\\_\\_\\_.com](http://www._____.com).

[www.\\_\\_\\_\\_\\_.com](http://www._____.com)

[Facebook F icon] \_\_\_\_\_

[twitter bird icon]@\_\_\_\_\_

© 2021 \_\_\_\_\_

- Brand logo



Bull Run Fly Attractant (EPA Reg. No. 84565-2)

April 23, 2024 Proposed Master Label Notification - Changes NOTED

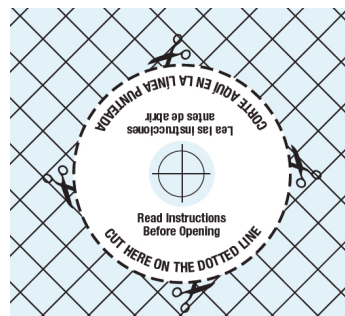
Based upon the July 16, 2021 EPA ACCEPTED label.

[Adds as optional text to the Bull Run \[Small\] \[Medium\] \[Large\] Fly Trap Attractant label the label text for the associated trap.](#)

[Adds "For Bull Run Large Fly Trap" to the associated attractant label.](#)

[ ] Denotes optional text. { } Denotes explanatory text for the reviewer.

{Optional graphics for inclusion on any panel (Bull Run Small Fly Trap Attractant):}



Bull Run Fly Attractant (EPA Reg. No. 84565-2)

April 23, 2024 Proposed Master Label Notification - Changes NOTED

Based upon the July 16, 2021 EPA ACCEPTED label.

Adds as optional text to the Bull Run [Small] [Medium] [Large] Fly Trap Attractant label the label text for the associated trap.

Adds "For Bull Run Large Fly Trap" to the associated attractant label.

[ ] Denotes optional text. { } Denotes explanatory text for the reviewer.

**{Optional label statements for the Bull Run Small Fly Trap Attractant label from the label for the Bull Run Small Fly Trap:}**

[brand logo]

[Made in USA logo]

[Outdoor]

[Reusable]

## Bull Run Small Fly Trap

Add Water. Subtract Flies.

- Flies Find It Fast
- Lets Flies In, But Not Out
- Easy to Reuse, Less Waste

Contains Bull Run Small Fly Trap [Attractant] [Refill]

### INGREDIENTS:

#### Active Ingredients:

<u>Sucrose .....</u>	<u>42.1%</u>
<u>Putrescent Whole Egg Solids.....</u>	<u>18.0%</u>
<u>Yeast .....</u>	<u>5.5%</u>
<u>Trimethylamine.....</u>	<u>2.8%</u>
<u>Indole .....</u>	<u>0.2%</u>
<u>Other Ingredients: .....</u>	<u>31.4%</u>
<u>TOTAL: .....</u>	<u>100.0%</u>

[Net Contents: 0.51 oz]

Keep Out of Reach of Children

### CAUTION

See pouch inside for Storage and Disposal information

EPA Reg. No. 84565-2

EPA Est. No. 49407-WA-001

Bull Run Fly Attractant (EPA Reg. No. 84565-2)

April 23, 2024 Proposed Master Label Notification - Changes NOTED

Based upon the July 16, 2021 EPA ACCEPTED label.

Adds as optional text to the Bull Run [Small] [Medium] [Large] Fly Trap Attractant label the label text for the associated trap.

Adds "For Bull Run Large Fly Trap" to the associated attractant label.

[ ] Denotes optional text. { } Denotes explanatory text for the reviewer.

---

----- FILL LINE -----

#### DIRECTIONS FOR USE:

[This is an outdoor trap. Fill and use outdoors.]

1. Unscrew lid and remove foil pouch.
2. Tear open pouch at tabs and drop inner packet into trap.
3. Add water to fill line. (Water will dissolve packet.)
4. While holding lid in both hands, press up on the cone until the top piece snaps in place, creating an entrance for flies.]
- [4.] [5.] Replace [lid] [top] securely.
- [5.] [6.] Hang or place trap outdoors near a fly source.
- [6.] [7.] Attractant will activate within 2-5 hours, creating an odor attractive to flies.
- [7.] [8.] Wash hands with soap and water.
- [8.] [9.] Empty trap and replace attractant when trap dries out or becomes full, or after 30 days - whichever comes first.
- [9.] [10.] After desired use and reuse, trap can be recycled.

The jar is [PET (#1)] [HDPE (#2)] and the lid is PP (#5). Contact your local recycling center to determine if these plastics are recyclable in your area.

[Need to catch flies indoors? Look for our TrapStik® for Flies!]

[rescue.com](http://rescue.com)

[info@rescue.com](mailto:info@rescue.com)

[Facebook and Instagram logos]/rescuepestcontrol [Twitter or X logo]@rescue

Model FTR [-RFID] | MADE IN USA

Bull Run Scientific, VBT

3808 N. Sullivan Rd., Bldg. 16

Spokane, WA 99216 USA

1-800-666-6766

EPA Est. No. 49407-WA-001

©1995, 2019 Sterling International, Inc.

©1996, 2019 Sterling International, Inc.

International Trademarks

©1996, 2019 Sterling International, Inc.

[UPC 042853710170]

Bull Run Fly Attractant (EPA Reg. No. 84565-2)

April 23, 2024 Proposed Master Label Notification - Changes NOTED

Based upon the July 16, 2021 EPA ACCEPTED label.

[Adds as optional text to the Bull Run \[Small\] \[Medium\] \[Large\] Fly Trap Attractant label the label text for the associated trap.](#)

[Adds "For Bull Run Large Fly Trap" to the associated attractant label.](#)

[ ] Denotes optional text. { } Denotes explanatory text for the reviewer.

**Labeling Text for Use on Bull Run Medium Fly Trap Attractant**

{Front Panel, Bull Run Medium Fly Trap Attractant}

**Bull Run  
MEDIUM FLY TRAP ATTRACTANT**

INGREDIENTS	
<b>ACTIVE INGREDIENTS:</b>	
Sucrose . . . . .	42.1%
Putrescent Whole Egg Solids . . . . .	18.0%
Yeast . . . . .	5.5%
Trimethylamine . . . . .	2.8%
Indole . . . . .	0.2%
<b>OTHER INGREDIENTS . . . . .</b>	<b>31.4%</b>
<b>TOTAL . . . . .</b>	<b>100.0%</b>

**Keep Out of Reach of Children  
CAUTION**

**NET CONTENTS: 1.45 oz  
1 packet**

Bull Run Fly Attractant (EPA Reg. No. 84565-2)

April 23, 2024 Proposed Master Label Notification - Changes NOTED

Based upon the July 16, 2021 EPA ACCEPTED label.

[Adds as optional text to the Bull Run \[Small\] \[Medium\] \[Large\] Fly Trap Attractant label the label text for the associated trap.](#)[Adds "For Bull Run Large Fly Trap" to the associated attractant label.](#)

[ ] Denotes optional text. { } Denotes explanatory text for the reviewer.

{Back Panel, Bull Run Medium Fly Trap Attractant}

*{Optional text:}***GENERAL INFORMATION:**

Provide the consumer with an easy, effective, economical and responsible way to control insect pests: That's the mission we set out to fulfill over 35 years ago.

This product is proven to trap the following species: House Fly, Lesser House Fly, Cluster Fly, Lance Fly, Secondary Screwworm Fly, Flesh Fly, False Stable Fly, Blow Flies and Bottle Flies.

**DIRECTIONS FOR USE:**

It is a violation of Federal law to use this product in a manner inconsistent with its labeling.

This is an outdoor [trap] [product]. Fill and use outdoors.

1. Tear open pouch at tabs and drop inner packet into trap.
2. Add water to fill line.
3. While holding lid in both hands, press up on the cone until the top piece snaps in place, creating the entrance for flies.
4. Replace lid securely.
5. Hang or place trap outdoors near a fly source.
6. Wash hands with soap and water.
7. Empty trap and rebait with a new Bull Run Medium Fly [Trap] [Attractant] [Refill] when trap dries out or becomes full, or after 30 days - whichever comes first.

*{Optional text:}*

**Helpful Hints:** Weather conditions affect fly activity and trap effectiveness. In hotter temperatures, place traps in shade. In cooler temperatures, flies will be more active where it is warmer, so place traps in sun-exposed areas.

**STORAGE AND DISPOSAL**

Do not contaminate water, food or feed by storage or disposal.

**STORAGE:** Store in a cool, dry, well-ventilated location out of reach of pets and livestock.

**DISPOSAL:** Deposit in trash for collection. Wash hands with soap and water.

1-800-XXX-XXXX

EPA Reg. No. 84565-2

EPA Est. No. \_\_\_\_\_

Made in USA

Bull Run Scientific, VBT

3900 Westerre Parkway, Suite 300

Richmond, VA 23233

Bull Run Fly Attractant (EPA Reg. No. 84565-2)

April 23, 2024 Proposed Master Label Notification - Changes NOTED

Based upon the July 16, 2021 EPA ACCEPTED label.

[Adds as optional text to the Bull Run \[Small\] \[Medium\] \[Large\] Fly Trap Attractant label the label text for the associated trap.](#)[Adds "For Bull Run Large Fly Trap" to the associated attractant label.](#)

[ ] Denotes optional text. { } Denotes explanatory text for the reviewer.

**{Optional text/graphics for inclusion on any panel (Bull Run Medium Fly Trap Attractant):}**

- Model XXX
- Made in USA
- Non-toxic mode of action
- No killing agents - insects drown
- Effective and responsible
- Dissolves and activates in water
- Attractant dissolves and activates in water
- Add water - Subtract flies
- Just add water and hang
- Just add water and hang trap
- Easy to use - just add water
- Never touch bait or flies
- Sanitary; never touch the bait or flies
- Lets flies in, but not out
- Flies get in, but not out
- Naturally-occurring ingredients draw flies away from you
- Perfect for lawn, garden, camping and farm use
- Protect your outdoor living space from nuisance and filth flies
- Lure[s] flies away
- Flies find it fast
- For Bull Run Medium Fly Trap
- For use with the Bull Run Medium Fly Trap
- Outdoor
- Outdoor use [trap]
- Need to catch flies indoors? Look for our TrapStik for Flies!

Established in \_\_\_\_\_, \_\_\_\_\_ offers traps and attractants for wasps, hornets, yellowjackets, flies, stink bugs, Japanese beetles and more. Look for these products at home improvement centers, hardware stores and lawn and garden retailers throughout the U.S. and beyond. For more information, visit our website at [www.\\_\\_\\_\\_\\_.com](http://www._____.com).

[www.\\_\\_\\_\\_\\_.com](http://www._____.com)

[Facebook F icon] \_\_\_\_\_

[twitter bird icon]@\_\_\_\_\_

© 2021 \_\_\_\_\_

- Brand logo

Bull Run Fly Attractant (EPA Reg. No. 84565-2)

April 23, 2024 Proposed Master Label Notification - Changes NOTED

Based upon the July 16, 2021 EPA ACCEPTED label.

[Adds as optional text to the Bull Run \[Small\] \[Medium\] \[Large\] Fly Trap Attractant label the label text for the associated trap.](#)

[Adds "For Bull Run Large Fly Trap" to the associated attractant label.](#)

[ ] Denotes optional text. { } Denotes explanatory text for the reviewer.

{Optional graphics for inclusion on any panel (Bull Run Medium Fly Trap Attractant):}



Bull Run Fly Attractant (EPA Reg. No. 84565-2)

April 23, 2024 Proposed Master Label Notification - Changes NOTED

Based upon the July 16, 2021 EPA ACCEPTED label.

Adds as optional text to the Bull Run [Small] [Medium] [Large] Fly Trap Attractant label the label text for the associated trap.

Adds "For Bull Run Large Fly Trap" to the associated attractant label.

[ ] Denotes optional text. { } Denotes explanatory text for the reviewer.

**{Optional label statements for the Bull Run Medium Fly Trap Attractant label from the label for the Bull Run Small Fly Trap:}**

[brand logo]

[Made in USA logo]

[Outdoor]

[Reusable]

## Bull Run Medium Fly Trap

Add Water. Subtract Flies.

- Flies Find It Fast
- Lets Flies In, But Not Out
- Easy to Reuse, Less Waste

Contains Bull Run Medium Fly Trap [Attractant] [Refill]

INGREDIENTS:

Active Ingredients:

<u>Sucrose .....</u>	<u>42.1%</u>
<u>Putrescent Whole Egg Solids.....</u>	<u>18.0%</u>
<u>Yeast .....</u>	<u>5.5%</u>
<u>Trimethylamine.....</u>	<u>2.8%</u>
<u>Indole .....</u>	<u>0.2%</u>
<u>Other Ingredients: .....</u>	<u>31.4%</u>
<u>TOTAL: .....</u>	<u>100.0%</u>

[Net Contents: 1.45 oz]

Keep Out of Reach of Children

CAUTION

See [attractant] [refill] pouch inside for Storage and Disposal information

EPA Reg. No. 84565-2

EPA Est. No. 49407-WA-001



Bull Run Fly Attractant (EPA Reg. No. 84565-2)

April 23, 2024 Proposed Master Label Notification - Changes NOTED

Based upon the July 16, 2021 EPA ACCEPTED label.

Adds as optional text to the Bull Run [Small] [Medium] [Large] Fly Trap Attractant label the label text for the associated trap.

Adds "For Bull Run Large Fly Trap" to the associated attractant label.

[ ] Denotes optional text. { } Denotes explanatory text for the reviewer.

---

----- FILL LINE -----

[Foil pouch inside bottle contains the RESCUE! Fly Trap Refill, scientifically formulated to lure all common filth and nuisance fly species to this trap.]

#### **DIRECTIONS FOR USE:**

[This is an outdoor trap. Fill and use outdoors.]

1. Unscrew lid and remove foil pouch.
2. Tear open pouch at tabs and drop inner packet into trap.
3. Add water to fill line. (Water will dissolve packet.)
4. While holding lid in both hands, press up on the cone until the top piece snaps in place, creating an entrance for flies.]
4. Replace top securely.]
5. Replace lid securely.]
5. Grasp center tab on top and pull up to open entrance for flies.]
6. Hang or place trap outdoors near a fly source.
7. Attractant will activate within 2-5 hours, creating an odor attractive to flies.]
- 7.] [8.] Wash hands with soap and water.
- 8.] [9.] Empty trap and replace with a new refill when trap dries out or becomes full, or after 30 days - whichever comes first.
- 9.] [10.] After desired use and reuse, trap can be recycled.

[The jar is PET (#1) and the lid is PP (#5). Both are recyclable plastic. Contact your local recycling center to determine if these plastics are recyclable in your area.]

[Recycling of this trap:

Remove label and rinse before recycling this product. The bottle is PET(#1) and the lid is PP(#5). Both are recyclable plastic. Contact your local recycling center to determine if these plastics are recyclable in your area.]

[Need to catch flies indoors? Look for our TrapStik® for Flies!]

[Made with recyclable plastic and a powerful lure to deliver a knockout punch to flies!]

[rescue.com](http://rescue.com)

[info@rescue.com](mailto:info@rescue.com)

[Facebook and Instagram logos]/[rescuepestcontrol](https://www.facebook.com/rescuepestcontrol) [Twitter or X logo]@[rescue](https://twitter.com/rescue)

[Model PFTR \[-RFID\] | MADE IN USA](#)

[Bull Run Scientific, VBT](#)

[3808 N. Sullivan Rd., Bldg. 16](#)

[Spokane, WA 99216 USA](#)

[1-800-666-6766](#)

[EPA Est. No. 49407-WA-001](#)

[©1995, 2019 Sterling International, Inc.](#)

[®1996, 2019 Sterling International, Inc.](#)

[International Trademarks](#)

[®1996, 2019 Sterling International, Inc.](#)

[\[UPC 042853750176\]](#)

Bull Run Fly Attractant (EPA Reg. No. 84565-2)

April 23, 2024 Proposed Master Label Notification - Changes NOTED

Based upon the July 16, 2021 EPA ACCEPTED label.

[Adds as optional text to the Bull Run \[Small\] \[Medium\] \[Large\] Fly Trap Attractant label the label text for the associated trap.](#)

[Adds "For Bull Run Large Fly Trap" to the associated attractant label.](#)

[ ] Denotes optional text. { } Denotes explanatory text for the reviewer.

**Labeling Text for Use on Bull Run Large Fly Trap Attractant**

{Front Panel, Bull Run Large Fly Trap Attractant}

**Bull Run  
LARGE FLY TRAP ATTRACTANT**

INGREDIENTS	
<b>ACTIVE INGREDIENTS:</b>	
Sucrose . . . . .	42.1%
Putrescent Whole Egg Solids . . . . .	18.0%
Yeast . . . . .	5.5%
Trimethylamine . . . . .	2.8%
Indole . . . . .	0.2%
<b>OTHER INGREDIENTS . . . . .</b>	<b>31.4%</b>
<b>TOTAL . . . . .</b>	<b>100.0%</b>

**Keep Out of Reach of Children  
CAUTION**

**NET CONTENTS: 2.47 oz**

Bull Run Fly Attractant (EPA Reg. No. 84565-2)

April 23, 2024 Proposed Master Label Notification - Changes NOTED

Based upon the July 16, 2021 EPA ACCEPTED label.

[Adds as optional text to the Bull Run \[Small\] \[Medium\] \[Large\] Fly Trap Attractant label the label text for the associated trap.](#)[Adds "For Bull Run Large Fly Trap" to the associated attractant label.](#)

[ ] Denotes optional text. { } Denotes explanatory text for the reviewer.

{Back Panel, Bull Run Large Fly Trap Attractant}

*{Optional text:}***GENERAL INFORMATION:**

Provide the consumer with an easy, effective, economical and responsible way to control insect pests: That's the mission we set out to fulfill over 35 years ago.

This product is proven to trap the following species: House Fly, Lesser House Fly, Cluster Fly, Lance Fly, Secondary Screwworm Fly, Flesh Fly, False Stable Fly, Blow Flies and Bottle Flies.

**DIRECTIONS FOR USE:**

It is a violation of Federal law to use this product in a manner inconsistent with its labeling.

This is an outdoor [trap] [product]. Fill and use outdoors.

*{Optional text:}*

This product is proven to catch the following species: House Fly, Lesser House Fly, Cluster Fly, Lance Fly, Secondary Screwworm Fly, Flesh Fly, False Stable Fly, Blow Flies and Bottle Flies.

1. Tear open pouch at tabs and drop inner packet into trap.
2. Add water to fill line.
3. Replace lid securely.
4. Pull up top cap until it snaps in place, creating the entrance for flies.
5. Hang or place trap outdoors near a fly source or livestock area.
6. Wash hands with soap and water.
7. Empty trap and rebait with a new Bull Run Large Fly [Trap] [Attractant] [Refill] when trap dries out or becomes full, or after 30 days - whichever comes first.

*{Optional text:}*

**Helpful Hints:** Weather conditions affect fly activity and trap effectiveness. In hotter temperatures, place traps in shade. In cooler temperatures, flies will be more active where it is warmer, so place traps in sun-exposed areas.

**STORAGE AND DISPOSAL**

Do not contaminate water, food or feed by storage or disposal.

**STORAGE:** Store in a cool, dry, well-ventilated location out of reach of pets and livestock.

**DISPOSAL:** Deposit in trash for collection. Wash hands with soap and water.

1-800-XXX-XXXX

EPA Reg. No. 84565-2  
EPA Est. No. \_\_\_\_\_

Made in USA  
Bull Run Scientific, VBT  
3900 Westerre Parkway, Suite 300  
Richmond, VA 23233

Bull Run Fly Attractant (EPA Reg. No. 84565-2)

April 23, 2024 Proposed Master Label Notification - Changes NOTED

Based upon the July 16, 2021 EPA ACCEPTED label.

[Adds as optional text to the Bull Run \[Small\] \[Medium\] \[Large\] Fly Trap Attractant label the label text for the associated trap.](#)[Adds "For Bull Run Large Fly Trap" to the associated attractant label.](#)

[ ] Denotes optional text. { } Denotes explanatory text for the reviewer.

{Optional text/graphics for inclusion on any panel (Bull Run Large Fly Trap Attractant):}

- Model XXX
- Made in USA
- [For Bull Run Large Fly Trap](#)
- Non-toxic mode of action
- No killing agents - insects drown
- Effective and responsible
- Dissolves and activates in water
- Attractant dissolves and activates in water
- Add water - Subtract flies
- Just add water and hang
- Just add water and hang trap
- Easy to use - just add water
- Never touch bait or flies
- Sanitary; never touch the bait or flies
- Lets flies in, but not out
- Flies get in, but not out
- Naturally-occurring ingredients draw flies away from you
- Perfect for lawn, garden, camping and farm use
- Protect your outdoor living space from nuisance and filth flies
- Lure[s] flies away
- Flies find it fast
- Outdoor
- Outdoor use [attractant]
- Need to catch flies indoors? Look for our TrapStik for Flies!

Established in \_\_\_\_\_, \_\_\_\_\_ offers traps and attractants for wasps, hornets, yellowjackets, flies, stink bugs, Japanese beetles and more. Look for these products at home improvement centers, hardware stores and lawn and garden retailers throughout the U.S. and beyond. For more information, visit our website at [www.\\_\\_\\_\\_\\_.com](http://www._____.com).

[www.\\_\\_\\_\\_\\_.com](http://www._____.com)

[Facebook F icon] \_\_\_\_\_

[twitter bird icon]@\_\_\_\_\_

© 2021 \_\_\_\_\_

- Brand logo

Bull Run Fly Attractant (EPA Reg. No. 84565-2)

April 23, 2024 Proposed Master Label Notification - Changes NOTED

Based upon the July 16, 2021 EPA ACCEPTED label.

[Adds as optional text to the Bull Run \[Small\] \[Medium\] \[Large\] Fly Trap Attractant label the label text for the associated trap.](#)

[Adds "For Bull Run Large Fly Trap" to the associated attractant label.](#)

[ ] Denotes optional text. { } Denotes explanatory text for the reviewer.

---

{Optional graphics for inclusion on any panel (Bull Run Large Fly Trap Attractant):}



Bull Run Fly Attractant (EPA Reg. No. 84565-2)

April 23, 2024 Proposed Master Label Notification - Changes NOTED

Based upon the July 16, 2021 EPA ACCEPTED label.

Adds as optional text to the Bull Run [Small] [Medium] [Large] Fly Trap Attractant label the label text for the associated trap.

Adds "For Bull Run Large Fly Trap" to the associated attractant label.

[ ] Denotes optional text. { } Denotes explanatory text for the reviewer.

**{Optional label statements for the Bull Run Large Fly Trap Attractant label from the label for the Bull Run Small Fly Trap:}**

[brand logo]

[Made in USA logo]

[Reusable]

## Bull Run Large Fly Trap

Add Water. Subtract Flies.

- Flies Find It Fast
- Lets Flies In, But Not Out
- Easy to Reuse, Less Waste

Contains Bull Run Large Fly Trap [Attractant] [Refill]

### INGREDIENTS:

#### Active Ingredients:

<u>Sucrose .....</u>	<u>42.1%</u>
<u>Putrescent Whole Egg Solids.....</u>	<u>18.0%</u>
<u>Yeast .....</u>	<u>5.5%</u>
<u>Trimethylamine.....</u>	<u>2.8%</u>
<u>Indole .....</u>	<u>0.2%</u>
<u>Other Ingredients: .....</u>	<u>31.4%</u>
<u>TOTAL: .....</u>	<u>100.0%</u>

[Net Contents: 2.47 oz]

Keep Out of Reach of Children

#### CAUTION

See [attractant] [refill] pouch inside for Storage and Disposal information

EPA Reg. No. 84565-2

EPA Est. No. 49407-WA-001

Bull Run Fly Attractant (EPA Reg. No. 84565-2)

April 23, 2024 Proposed Master Label Notification - Changes NOTED

Based upon the July 16, 2021 EPA ACCEPTED label.

Adds as optional text to the Bull Run [Small] [Medium] [Large] Fly Trap Attractant label the label text for the associated trap.

Adds "For Bull Run Large Fly Trap" to the associated attractant label.

[ ] Denotes optional text. { } Denotes explanatory text for the reviewer.

---

----- FILL LINE -----

### DIRECTIONS FOR USE:

This is an outdoor trap. Fill and use outdoors.

1. Unscrew lid and remove foil pouch.
2. Tear open pouch at tabs and drop inner packet into trap.
3. Add water to fill line. (Water will dissolve packet.)
4. Replace lid securely.
5. Pull top cap until it snaps in place, creating the entrance for flies.
6. Hang or place trap outdoors near a fly source.
7. Attractant will activate within 2-5 hours, creating an odor attractive to flies.
8. Wash hands with soap and water.
9. Empty trap and rebait with a new Bull Run Large Fly Trap Attractant when trap dries out or becomes full, or after 30 days - whichever comes first.

[Need to catch flies indoors? Look for our TrapStik® for Flies!]

[rescue.com](http://rescue.com)

[info@rescue.com](mailto:info@rescue.com)

[Facebook and Instagram logos]/rescuepestcontrol [Twitter or X logo]@rescue

Model FTM [-RFID]

MADE IN USA

Bull Run Scientific, VBT

3808 N. Sullivan Rd., Bldg. 16

Spokane, WA 99216 USA

1-800-666-6766

EPA Est. No. 49407-WA-001

[UPC 042853762100]

Bull Run Fly Attractant (EPA Reg. No. 84565-2)

April 23, 2024 Proposed Master Label Notification - Changes NOTED

Based upon the July 16, 2021 EPA ACCEPTED label.

[Adds as optional text to the Bull Run \[Small\] \[Medium\] \[Large\] Fly Trap Attractant label the label text for the associated trap.](#)

[Adds "For Bull Run Large Fly Trap" to the associated attractant label.](#)

[ ] Denotes optional text. { } Denotes explanatory text for the reviewer.

**Labeling Text for Use on Bull Run Fly Attractant and Alternate Brand Name Products**

{Front Panel, Bull Run Fly Attractant}

**Bull Run  
FLY ATTRACTANT**

INGREDIENTS	
<b>ACTIVE INGREDIENTS:</b>	
Sucrose . . . . .	42.1%
Putrescent Whole Egg Solids. . . . .	18.0%
Yeast . . . . .	5.5%
Trimethylamine . . . . .	2.8%
Indole . . . . .	0.2%
<b>OTHER INGREDIENTS. . . . .</b>	<b>31.4%</b>
<b>TOTAL . . . . .</b>	<b>100.0%</b>

**Keep Out of Reach of Children  
CAUTION**

**NET CONTENTS: \_\_\_ oz  
                          \_\_\_ Packet(s)**



Bull Run Fly Attractant (EPA Reg. No. 84565-2)

April 23, 2024 Proposed Master Label Notification - Changes NOTED

Based upon the July 16, 2021 EPA ACCEPTED label.

[Adds as optional text to the Bull Run \[Small\] \[Medium\] \[Large\] Fly Trap Attractant label the label text for the associated trap.](#)[Adds "For Bull Run Large Fly Trap" to the associated attractant label.](#)

[ ] Denotes optional text. { } Denotes explanatory text for the reviewer.

{Back Panel, Bull Run Fly Attractant}

*{Optional text:}***GENERAL INFORMATION:**

Provide the consumer with an easy, effective, economical and responsible way to control insect pests: That's the mission we set out to fulfill over 35 years ago.

This product is proven to trap the following species: House Fly, Lesser House Fly, Cluster Fly, Lance Fly, Secondary Screwworm Fly, Flesh Fly, False Stable Fly, Blow Flies and Bottle Flies.

**DIRECTIONS FOR USE:**

It is a violation of Federal law to use this product in a manner inconsistent with its labeling.

This is an outdoor [trap] [product]. Fill and use outdoors.

*{Optional text:}*

This product is proven to catch the following species: House Fly, Lesser House Fly, Cluster Fly, Lance Fly, Secondary Screwworm Fly, Flesh Fly, False Stable Fly, Blow Flies and Bottle Flies.

1. Tear open pouch at tabs and drop inner packet into trap.
2. Add water to fill line.
3. Replace lid securely.
4. Pull up on top cap until it snaps in place, creating the entrance for flies.
5. Hang or place trap outdoors near a fly source.
6. Wash hands with soap and water.
7. For reusable traps, empty trap and rebait with new Bull Run Fly [Trap] [Attractant] [Refill] when trap dries out or becomes full, or after 30 days - whichever comes first.

*{Optional text:}*

**Helpful Hints:** Weather conditions affect fly activity and trap effectiveness. In hotter temperatures, place traps in shade. In cooler temperatures, flies will be more active where it is warmer, so place traps in sun-exposed areas.

**STORAGE AND DISPOSAL**

Do not contaminate water, food or feed by storage or disposal.

**STORAGE:** Store in a cool, dry, well-ventilated location out of reach of pets and livestock.

**DISPOSAL:** Deposit in trash for collection. Wash hands with soap and water.

1-800-XXX-XXXX

EPA Reg. No. 84565-2

EPA Est. No. \_\_\_\_\_

Made in USA

Bull Run Scientific, VBT

3900 Westerre Parkway, Suite 300

Richmond, VA 23233

Bull Run Fly Attractant (EPA Reg. No. 84565-2)

April 23, 2024 Proposed Master Label Notification - Changes NOTED

Based upon the July 16, 2021 EPA ACCEPTED label.

[Adds as optional text to the Bull Run \[Small\] \[Medium\] \[Large\] Fly Trap Attractant label the label text for the associated trap.](#)[Adds "For Bull Run Large Fly Trap" to the associated attractant label.](#)

[ ] Denotes optional text. { } Denotes explanatory text for the reviewer.

**{Optional text/graphics for inclusion on any panel (Bull Run Fly Attractant):}**

- Model XXX
- Made in USA
- Non-toxic mode of action
- No killing agents - insects drown
- Effective and responsible
- Dissolves and activates in water
- Attractant dissolves and activates in water
- Add water - Subtract flies
- Just add water and hang
- Just add water and hang trap
- Easy to use - just add water
- Never touch bait or flies
- Sanitary; never touch the bait or flies
- Lets flies in, but not out
- Flies get in, but not out
- Naturally-occurring ingredients draw flies away from you
- Perfect for lawn, garden, camping and farm use
- Protect your outdoor living space from nuisance and filth flies
- Lure[s] flies away
- Flies find it fast
- Outdoor
- Outdoor use [attractant]
- Need to catch flies indoors? Look for our TrapStik for Flies!

Established in \_\_\_\_\_, \_\_\_\_\_ offers traps and attractants for wasps, hornets, yellowjackets, flies, stink bugs, Japanese beetles and more. Look for these products at home improvement centers, hardware stores and lawn and garden retailers throughout the U.S. and beyond. For more information, visit our website at [www.\\_\\_\\_\\_\\_.com](http://www._____.com).

[www.\\_\\_\\_\\_\\_.com](http://www._____.com)

[Facebook F icon] \_\_\_\_\_

[twitter bird icon]@\_\_\_\_\_

© 2021 \_\_\_\_\_

- Brand logo

Bull Run Fly Attractant (EPA Reg. No. 84565-2)

April 23, 2024 Proposed Master Label Notification - Changes NOTED

Based upon the July 16, 2021 EPA ACCEPTED label.

[Adds as optional text to the Bull Run \[Small\] \[Medium\] \[Large\] Fly Trap Attractant label the label text for the associated trap.](#)

[Adds "For Bull Run Large Fly Trap" to the associated attractant label.](#)

[ ] Denotes optional text. { } Denotes explanatory text for the reviewer.

---

{Optional graphics for inclusion on any panel (Bull Run Fly Attractant):}



Bull Run Fly Attractant (EPA Reg. No. 84565-2)

April 23, 2024 Proposed Master Label Notification - Changes NOTED

Based upon the July 16, 2021 EPA ACCEPTED label.

[Adds as optional text to the Bull Run \[Small\] \[Medium\] \[Large\] Fly Trap Attractant label the label text for the associated trap.](#)

[Adds "For Bull Run Large Fly Trap" to the associated attractant label.](#)

[ ] Denotes optional text. { } Denotes explanatory text for the reviewer.

**Labeling Text for Tubular Bull Run Fly Trap Pedestal**

{Pedestal Front Panel}

Tubular Bull Run Fly Trap

<b>INGREDIENTS</b>	
<b>ACTIVE INGREDIENTS:</b>	
Sucrose . . . . .	42.1%
Putrescent Whole Egg Solids . . . . .	18.0%
Yeast . . . . .	5.5%
Trimethylamine . . . . .	2.8%
Indole . . . . .	0.2%
<b>OTHER INGREDIENTS . . . . .</b>	<b>31.4%</b>
<b>TOTAL . . . . .</b>	<b>100.0%</b>

**Keep Out of Reach of Children  
CAUTION**

**NET CONTENTS: 0.51 oz**

Bull Run Scientific, VBT

{Pedestal Left Panel}

Provide the consumer with an easy, effective, economical and responsible way to control insect pests: That’s the mission we set out to fulfill over 35 years ago. With the Tubular Trap, we’ve added another objective: Make it decorative, for the discerning customer who wants to beautify the outdoor landscape.

Bull Run Fly Attractant (EPA Reg. No. 84565-2)

April 23, 2024 Proposed Master Label Notification - Changes NOTED

Based upon the July 16, 2021 EPA ACCEPTED label.

[Adds as optional text to the Bull Run \[Small\] \[Medium\] \[Large\] Fly Trap Attractant label the label text for the associated trap.](#)

[Adds "For Bull Run Large Fly Trap" to the associated attractant label.](#)

[ ] Denotes optional text. { } Denotes explanatory text for the reviewer.

---

{Pedestal Back Panel}

**Bull Run Scientific, VBT**

3900 Westerre Parkway, Suite 300

Richmond, VA 23233

1-800-\_\_\_\_-\_\_\_\_\_

EPA Reg. No. 84565-2

EPA Est. No. \_\_\_\_\_

Bull Run Fly Attractant (EPA Reg. No. 84565-2)

April 23, 2024 Proposed Master Label Notification - Changes NOTED

Based upon the July 16, 2021 EPA ACCEPTED label.

[Adds as optional text to the Bull Run \[Small\] \[Medium\] \[Large\] Fly Trap Attractant label the label text for the associated trap.](#)[Adds "For Bull Run Large Fly Trap" to the associated attractant label.](#)

[ ] Denotes optional text. { } Denotes explanatory text for the reviewer.

**{Optional text/graphics for inclusion on any panel (Tubular Bull Run Fly Trap):}**

- Model XXX
- Made in USA
  
- Non-toxic mode of action
- No killing agents - insects drown
- Effective and responsible
  
- Dissolves and activates in water
- Attractant dissolves and activates in water
- Add water - Subtract flies
- Just add water and hang
- Just add water and hang trap
- Easy to use - just add water
  
- Never touch bait or flies
- Sanitary; never touch the bait or flies
  
- Lets flies in, but not out
- Flies get in, but not out
- Naturally-occurring ingredients draw flies away from you
- Perfect for lawn, garden, camping and farm use
- Protect your outdoor living space from nuisance and filth flies
- Lure[s] flies away
  
- Flies find it fast
  
- Complete with attractant
  
- Comes with one Fly Trap Insert
- Decorative cover is reusable with either Yellowjacket Trap or Fly Trap Inserts
- Decorative cover is reusable with either Yellowjacket or Fly Trap Inserts
- Reusable with either Yellowjacket Trap or Fly Trap Inserts
- Reusable with either Yellowjacket or Fly Trap Inserts
  
- Outdoor
- Outdoor use [attractant]
- Need to catch flies indoors? Look for our TrapStik for Flies!

Established in \_\_\_\_\_, \_\_\_\_\_ offers traps and attractants for wasps, hornets, yellowjackets, flies, stink bugs, Japanese beetles and more. Look for these products at home improvement centers, hardware stores and lawn and garden retailers throughout the U.S. and beyond. For more information, visit our website at [www.\\_\\_\\_\\_\\_.com](http://www._____.com).

[www.\\_\\_\\_\\_\\_.com](http://www._____.com)

[Facebook F icon] \_\_\_\_\_

[twitter bird icon]@\_\_\_\_\_

© 2019 \_\_\_\_\_

Bull Run Fly Attractant (EPA Reg. No. 84565-2)

April 23, 2024 Proposed Master Label Notification - Changes NOTED

Based upon the July 16, 2021 EPA ACCEPTED label.

[Adds as optional text to the Bull Run \[Small\] \[Medium\] \[Large\] Fly Trap Attractant label the label text for the associated trap.](#)

[Adds "For Bull Run Large Fly Trap" to the associated attractant label.](#)

[ ] Denotes optional text. { } Denotes explanatory text for the reviewer.

---

{Optional graphics for inclusion on any panel (Tubular Bull Run Fly Trap):}



Bull Run Fly Attractant (EPA Reg. No. 84565-2)

April 23, 2024 Proposed Master Label Notification - Changes NOTED

Based upon the July 16, 2021 EPA ACCEPTED label.

[Adds as optional text to the Bull Run \[Small\] \[Medium\] \[Large\] Fly Trap Attractant label the label text for the associated trap.](#)

[Adds "For Bull Run Large Fly Trap" to the associated attractant label.](#)

[ ] Denotes optional text. { } Denotes explanatory text for the reviewer.

**Labeling for Tubular Bull Run Fly Trap Insert**  
 (Label text is printed directly on a plastic pouch that contains the trap insert)  
 (Packaged with trap; contains attractant)

## Tubular Bull Run Fly Trap Insert

For use in the Tubular Bull Run Fly Trap from \_\_\_\_\_

INGREDIENTS	
<b>ACTIVE INGREDIENTS:</b>	
Sucrose . . . . .	42.1%
Putrescent Whole Egg Solids . . . . .	18.0%
Yeast . . . . .	5.5%
Trimethylamine . . . . .	2.8%
Indole . . . . .	0.2%
<b>OTHER INGREDIENTS . . . . .</b>	<b><u>31.4%</u></b>
<b>TOTAL . . . . .</b>	<b>100.0%</b>

**Keep Out of Reach of Children  
CAUTION**

**NET CONTENTS: 0.51 oz**

Bull Run Scientific, VBT



Bull Run Fly Attractant (EPA Reg. No. 84565-2)

April 23, 2024 Proposed Master Label Notification - Changes NOTED

Based upon the July 16, 2021 EPA ACCEPTED label.

[Adds as optional text to the Bull Run \[Small\] \[Medium\] \[Large\] Fly Trap Attractant label the label text for the associated trap.](#)

[Adds "For Bull Run Large Fly Trap" to the associated attractant label.](#)

[ ] Denotes optional text. { } Denotes explanatory text for the reviewer.

## Tubular Bull Run Fly Trap Insert

{Optional text:}

### GENERAL INFORMATION:

Provide the consumer with an easy, effective, economical and responsible way to control insect pests: That's the mission we set out to fulfill over 35 years ago. With the Tubular Trap, we've added another objective: Make it decorative, for the discerning customer who wants to beautify the outdoor landscape.

This product is proven to trap the following species: House Fly, Lesser House Fly, Cluster Fly, Lance Fly, Secondary Screwworm Fly, Flesh Fly, False Stable Fly, Blow Flies and Bottle Flies.

### DIRECTIONS FOR USE:

It is a violation of Federal law to use this product in a manner inconsistent with its labeling.

This is an outdoor [trap] [product]. Fill and use outdoors.

1. Tear open pouch and remove Trap Insert.
2. Straighten bag and make sure attractant is at the bottom.
3. Pull up on center tab of top cap until it snaps in place.
4. Place Trap Insert, bag first, into threaded end of decorative cover. Screw top cap in place.
5. Fill trap outdoors using warm water. Add 1 cup water to "dissolve" line and wait five minutes for attractant packet to dissolve. Then add 3/4 cup more water to the "activate" line.
6. Hang trap outdoors at least 20 feet from home entrances and outdoor living areas. Trap emits a strong odor attractive to flies, and works best when placed at a distance drawing flies away from human activity.
7. Replace Trap Insert with Tubular Bull Run Fly Trap Insert when full, when contents dry out, or after two weeks – whichever comes first.

{Optional text:}

**Helpful Hints:** Weather conditions affect fly activity and trap effectiveness. In hotter temperatures, place traps in shade. In cooler temperatures, flies will be more active where it is warmer, so place traps in sun-exposed areas.

### STORAGE AND DISPOSAL

Do not contaminate water, food or feed by storage or disposal.

**STORAGE:** Store in a cool, dry, well-ventilated location out of reach of children and pets.

**DISPOSAL:** Push down on top cap to close trap, unscrew from decorative cover, and deposit in trash for collection. Wash hands with soap and water.

Bull Run Fly Attractant (EPA Reg. No. 84565-2)

April 23, 2024 Proposed Master Label Notification - Changes NOTED

Based upon the July 16, 2021 EPA ACCEPTED label.

[Adds as optional text to the Bull Run \[Small\] \[Medium\] \[Large\] Fly Trap Attractant label the label text for the associated trap.](#)

[Adds "For Bull Run Large Fly Trap" to the associated attractant label.](#)

[ ] Denotes optional text. { } Denotes explanatory text for the reviewer.

---

**Bull Run Scientific, VBT**

3900 Westerre Parkway, Suite 300

Richmond, VA 23233

1-800-\_\_\_\_-\_\_\_\_\_

EPA Reg. No. 84565-2

EPA Est. No. \_\_\_\_\_

Bull Run Fly Attractant (EPA Reg. No. 84565-2)

April 23, 2024 Proposed Master Label Notification - Changes NOTED

Based upon the July 16, 2021 EPA ACCEPTED label.

[Adds as optional text to the Bull Run \[Small\] \[Medium\] \[Large\] Fly Trap Attractant label the label text for the associated trap.](#)[Adds "For Bull Run Large Fly Trap" to the associated attractant label.](#)

[ ] Denotes optional text. { } Denotes explanatory text for the reviewer.

**{Optional text/graphics for inclusion on any panel (Tubular Bull Run Fly Trap Insert):}**

- Model XXX
- Made in USA
- Non-toxic mode of action
- No killing agents - insects drown
- Effective and responsible
- Dissolves and activates in water
- Attractant dissolves and activates in water
- Add water - Subtract flies
- Just add water and hang
- Just add water and hang trap
- Easy to use - just add water
- Never touch bait or flies
- Sanitary; never touch the bait or flies
- Lets flies in, but not out
- Flies get in, but not out
- Naturally-occurring ingredients draw flies away from you
- Perfect for lawn, garden, camping and farm use
- Protect your outdoor living space from nuisance and filth flies
- Lure[s] flies away
- Flies find it fast
- Comes with one Fly Trap Insert
- Outdoor
- Outdoor use [attractant]
- Need to catch flies indoors? Look for our TrapStik for Flies!

Established in \_\_\_\_\_, \_\_\_\_\_ offers traps and attractants for wasps, hornets, yellowjackets, flies, stink bugs, Japanese beetles and more. Look for these products at home improvement centers, hardware stores and lawn and garden retailers throughout the U.S. and beyond. For more information, visit our website at [www.\\_\\_\\_\\_\\_.com](http://www._____.com).

[www.\\_\\_\\_\\_\\_.com](http://www._____.com)

[Facebook F icon] \_\_\_\_\_

[twitter bird icon]@\_\_\_\_\_

© 2021 \_\_\_\_\_

- Brand logo

Bull Run Fly Attractant (EPA Reg. No. 84565-2)

April 23, 2024 Proposed Master Label Notification - Changes NOTED

Based upon the July 16, 2021 EPA ACCEPTED label.

[Adds as optional text to the Bull Run \[Small\] \[Medium\] \[Large\] Fly Trap Attractant label the label text for the associated trap.](#)

[Adds "For Bull Run Large Fly Trap" to the associated attractant label.](#)

[ ] Denotes optional text. { } Denotes explanatory text for the reviewer.

---

{Optional graphics for inclusion on any panel (Tubular Bull Run Fly Trap Insert):}



Bull Run Fly Attractant (EPA Reg. No. 84565-2)

April 23, 2024 Proposed Master Label Notification - Changes NOTED

Based upon the July 16, 2021 EPA ACCEPTED label.

[Adds as optional text to the Bull Run \[Small\] \[Medium\] \[Large\] Fly Trap Attractant label the label text for the associated trap.](#)

[Adds "For Bull Run Large Fly Trap" to the associated attractant label.](#)

[ ] Denotes optional text. { } Denotes explanatory text for the reviewer.

**Labeling Text for Tubular Bull Run Fly Trap Insert**  
 (Label text is printed directly on a plastic pouch that contains the trap insert)  
 (Trap refill with attractant)

## Tubular Bull Run Fly Trap Insert

For use in the Tubular Bull Run Fly Trap from \_\_\_\_\_

INGREDIENTS	
<b>ACTIVE INGREDIENTS:</b>	
Sucrose . . . . .	42.1%
Putrescent Whole Egg Solids . . . . .	18.0%
Yeast . . . . .	5.5%
Trimethylamine . . . . .	2.8%
Indole . . . . .	0.2%
OTHER INGREDIENTS . . . . .	<u>31.4%</u>
TOTAL . . . . .	100.0%

**Keep Out of Reach of Children  
CAUTION**

**NET CONTENTS: 0.51 oz**

Bull Run Scientific, VBT

*{Optional text:}*

**GENERAL INFORMATION:**

Provide the consumer with an easy, effective, economical and responsible way to control insect pests: That’s the mission we set out to fulfill over 35 years ago. With the Tubular Trap, we’ve added another objective: Make it decorative, for the discerning customer who wants to beautify the outdoor landscape.

This product is proven to trap the following species: House Fly, Lesser House Fly, Cluster Fly, Lance Fly, Secondary Screwworm Fly, Flesh Fly, False Stable Fly, Blow Flies and Bottle Flies.

Bull Run Fly Attractant (EPA Reg. No. 84565-2)

April 23, 2024 Proposed Master Label Notification - Changes NOTED

Based upon the July 16, 2021 EPA ACCEPTED label.

[Adds as optional text to the Bull Run \[Small\] \[Medium\] \[Large\] Fly Trap Attractant label the label text for the associated trap.](#)

[Adds "For Bull Run Large Fly Trap" to the associated attractant label.](#)

[ ] Denotes optional text. { } Denotes explanatory text for the reviewer.

---

## DIRECTIONS FOR USE:

It is a violation of Federal law to use this product in a manner inconsistent with its labeling.

This is an outdoor [trap] [product]. Fill and use outdoors.

1. Tear open pouch and remove Trap Insert.
2. Straighten bag and make sure attractant is at the bottom.
3. Pull up on center tab of top cap until it snaps in place.
4. Place Trap Insert, bag first, into threaded end of decorative cover. Screw top cap in place.
5. Fill trap outdoors using warm water. Add 1 cup water to "dissolve" line and wait five minutes for attractant packet to dissolve. Then add 3/4 cup more water to the "activate" line.
6. Hang trap outdoors at least 20 feet from home entrances and outdoor living areas. Trap emits a strong odor attractive to flies, and works best when placed at a distance drawing flies away from human activity.
7. Replace Trap Insert when full, when contents dry out, or after two weeks – whichever comes first.

*{Optional text:}*

**Helpful Hints:** Weather conditions affect fly activity and trap effectiveness. In hotter temperatures, place traps in shade. In cooler temperatures, flies will be more active where it is warmer, so place traps in sun-exposed areas.

## STORAGE AND DISPOSAL

Do not contaminate water, food or feed by storage or disposal.

**STORAGE:** Store in a cool, dry, well-ventilated location out of reach of children and pets.

**DISPOSAL:** Push down on top cap to close trap, unscrew from decorative cover, and deposit in trash for collection. Wash hands with soap and water.

## Bull Run Scientific, VBT

3900 Westerre Parkway, Suite 300

Richmond, VA 23233

1-800-\_\_\_-\_\_\_

EPA Reg. No. 84565-2

EPA Est. No. \_\_\_\_\_

Bull Run Fly Attractant (EPA Reg. No. 84565-2)

April 23, 2024 Proposed Master Label Notification - Changes NOTED

Based upon the July 16, 2021 EPA ACCEPTED label.

[Adds as optional text to the Bull Run \[Small\] \[Medium\] \[Large\] Fly Trap Attractant label the label text for the associated trap.](#)[Adds "For Bull Run Large Fly Trap" to the associated attractant label.](#)

[ ] Denotes optional text. { } Denotes explanatory text for the reviewer.

**{Optional text/graphics for inclusion on any panel (Tubular Bull Run Fly Trap Insert):}**

- Model XXX
- Made in USA
- Non-toxic mode of action
- No killing agents - insects drown
- Effective and responsible
- Dissolves and activates in water
- Attractant dissolves and activates in water
- Add water - Subtract flies
- Just add water and hang
- Just add water and hang trap
- Easy to use - just add water
- Never touch bait or flies
- Sanitary; never touch the bait or flies
- Lets flies in, but not out
- Flies get in, but not out
- Naturally-occurring ingredients draw flies away from you
- Perfect for lawn, garden, camping and farm use
- Protect your outdoor living space from nuisance and filth flies
- Lure[s] flies away
- Flies find it fast
- Comes with one Fly Trap Insert
- Enhances your surroundings
- Outdoor
- Outdoor use [attractant]
- Need to catch flies indoors? Look for our TrapStik for Flies!

Established in \_\_\_\_\_, \_\_\_\_\_ offers traps and attractants for wasps, hornets, yellowjackets, flies, stink bugs, Japanese beetles and more. Look for these products at home improvement centers, hardware stores and lawn and garden retailers throughout the U.S. and beyond. For more information, visit our website at [www.\\_\\_\\_\\_\\_.com](http://www._____.com).

[www.\\_\\_\\_\\_\\_.com](http://www._____.com)

[Facebook F icon] \_\_\_\_\_

[twitter bird icon]@\_\_\_\_\_

© 2021 \_\_\_\_\_

- Brand logo

Bull Run Fly Attractant (EPA Reg. No. 84565-2)

April 23, 2024 Proposed Master Label Notification - Changes NOTED

Based upon the July 16, 2021 EPA ACCEPTED label.

[Adds as optional text to the Bull Run \[Small\] \[Medium\] \[Large\] Fly Trap Attractant label the label text for the associated trap.](#)

[Adds "For Bull Run Large Fly Trap" to the associated attractant label.](#)

[ ] Denotes optional text. { } Denotes explanatory text for the reviewer.

---

{Optional graphics for inclusion on any panel (Tubular Bull Run Fly Trap Insert):}

