



UNITED STATES ENVIRONMENTAL PROTECTION AGENCY
WASHINGTON, D.C. 20460

OFFICE OF CHEMICAL SAFETY
AND POLLUTION PREVENTION

April 13, 2018

Cynthia Ann Smith
Agent to Bull Run Scientific, VBT
c/o Conn & Smith, Inc.
6713 Catskill Road
Lorton, VA 22079-1113

Subject: Labeling Notification per Pesticide Registration Notice (PRN) 98-10 – Minor Changes to
Optional Text on the Master Label
Product Name: Bull Run Japanese & Oriental Beetle Trap
EPA Registration Number: 84565-1
Application Date: 04/03/2018
OPP Decision Number: 539973

Dear Ms. Smith:

The U.S. Environmental Protection Agency (EPA) is in receipt of your application for notification under Pesticide Registration Notice (PRN) 98-10 for the above referenced product. The Biopesticides and Pollution Prevention Division (BPPD) has conducted a review of this request for its applicability under PRN 98-10 and finds that the action requested falls within the scope of PRN 98-10.

The labeling submitted with this application has been stamped “Notification” and will be placed in our records. You must submit one (1) copy of the final printed labeling with the modifications.

Should you wish to add/retain a reference to your company’s website on your label, then please be aware that the website becomes labeling under the Federal Insecticide, Fungicide, and Rodenticide Act (FIFRA) and is subject to review by the EPA. If the website is false or misleading, the product will be considered to be misbranded and sale or distribution of the product is unlawful under FIFRA section 12(a)(1)(E). 40 CFR § 156.10(a)(5) lists examples of statements the EPA may consider false or misleading. In addition, regardless of whether a website is referenced on your product’s label, claims made on the website may not substantially differ from those claims approved through the registration process. Therefore, should the EPA find or if it is brought to our attention that a website contains false or misleading statements or claims substantially differing from the EPA-approved registration, the website will be referred to the EPA’s Office of Enforcement and Compliance Assurance.

Page 2 of 2
EPA Reg. No. 84565-1
OPP Decision No. 539973

If you have any questions, please contact Elyse Bilardo of my team by phone at (703) 347-0182 or via email at bilardo.elyse@epa.gov.

Sincerely,

A handwritten signature in blue ink that reads "Andrew C. Bryceland". The signature is written in a cursive style with a large initial 'A' and a long, sweeping underline.

Andrew Bryceland, Team Leader
Biochemical Pesticides Branch
Biopesticides and Pollution
Prevention Division (7511P)
Office of Pesticide Programs

Enclosure: Master Label

[Front Panel]

[Optional text]
Model JBTZ
Model JBTD

[Optional text for Model JBTZ]
One-Season Reusable
[Optional text for Model JBTD]
Disposable

NOTIFICATION

84565-1

The applicant has certified that no changes, other than those reported to the Agency have been made to the labeling. The Agency acknowledges this notification by letter dated:

04/13/2018

Bull Run Japanese & Oriental Beetle Trap

Attractant lasts entire season

Lasts 8 Weeks

[Optional text for Model JBTZ]
Slide-lock bottom allows trap to be emptied and reused

Non-toxic mode of action

Protects your flowers, fruits, vegetables & lawns from destructive Japanese beetles and Oriental beetles

- Large capacity
- Durable, two-layer bag
- Welded design; bag stays attached
- Formulated to attract and trap beetles in your yard
- Central attractant placement lures beetles from all directions

[Optional text for Model JBTZ]
• Open to empty beetles when full

INGREDIENTS

ACTIVE INGREDIENTS:

Floral Attractants:

Eugenol	15.480%
Geraniol	6.622%
2-Phenethyl propionate	6.622%

Pheromones (Sex Attractants):

Oriental beetle pheromone *	0.034%
Nuranone** (Japanese beetle pheromone)	0.013%

OTHER INGREDIENTS 71.229%

TOTAL 100.000%

* Z-7-Tetradecen-2-one; 2.0 mg/dispenser

** (R,Z)-5-(1-decenyl)dihydro-2(3H)-furanone; 0.76 mg/dispenser

Keep Out of Reach of Children

CAUTION

NET CONTENTS: 0.21 Ounces (5.8 Grams)

[Back Panel]

Bull Run Japanese & Oriental Beetle Trap

Protects your flowers, fruits, vegetables & lawns from destructive Japanese beetles and Oriental beetles.

The Bull Run Japanese Beetle & Oriental Beetle Trap uses a scientifically designed method to control the release of natural floral and sex attractants to lure both male and female beetles to the trap. Once attracted, beetles fly into the large yellow panels and are stunned by the impact. They then fall into the attached bag.

JAPANESE BEETLE FEEDING & FLIGHT PATTERNS:

Beetles prefer ripening fruit and plants exposed to direct sunlight. They will congregate on top foliage and work down. Specific odors created by feeding beetles will lure more beetles to that location. Beetles are most active on warm, sunny days. Activity peaks between 9 a.m. and 3 p.m., or when temperatures reach 83-95°F (28-35°C). When humidity falls below 60%, Japanese beetles are less likely to fly, and will stay put feeding wherever they are.

ORIENTAL BEETLE FEEDING & FLIGHT PATTERNS:

Adults do their flying and feeding at night. They will feed on petals of flowers including daisies, roses and petunia. The larval stage is the most destructive, feeding on roots of turfgrass and ornamental plants; catching adult Oriental beetles will reduce this population.

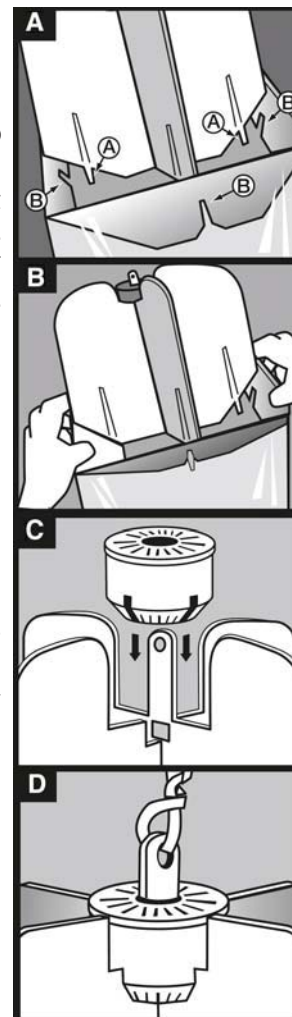
DIRECTIONS FOR USE

It is a violation of Federal law to use this product in a manner inconsistent with its labeling.

ASSEMBLY:

1. Unfold top of bag where panels are attached. Hold trap upside down to drop attractant cartridge and twist tie out of the bag.
2. (FIGURE A) Panels have side flaps which form a funnel inside bag and restrict the opening to keep beetles from escaping. Notches at bottom of side flaps are shown as PART B and should be snapped onto thin posts shown as PART A. (FIGURE B) From outside of bag, push in on each side flap so that its notches snap onto the posts. Continue until all four sides are in place.
3. Remove attractant cartridge from wrapper.
4. (FIGURE C) Slip cartridge, flat side up, over hanging tab, line up slots and snap in place.
5. (FIGURE D) Thread twist-tie through hole on top of center panels.
6. Attach trap tightly with a twist-tie to stake or pole 4 feet above the ground, at least 30 feet from the foliage to be protected.
7. Wash hands with soap and water.

TRAP PLACEMENT: Place traps at least 30 feet from ornamental plants to lure beetles away from the area where they may cause damage. 1-3 traps provide control in the average yard. **DO NOT** place more than 8 traps per acre (1 trap per 10,890 square feet).



[Optional text for Model JBTZ]

EMPTYING and REUSING: Open bottom of bag using handles and easy-lock opening, empty beetles into garbage sack and dispose in household trash. Press easy-lock opening back together to reseal it before re-hanging trap. **For best results, rinse inside of trap thoroughly, clearing any beetle parts which are obstructing slide-lock closure before resealing and re-hanging trap.**

STORAGE AND DISPOSAL

Do not contaminate water, food or feed by storage or disposal.

STORAGE: Store in a cool, dry, well ventilated location out of reach of children.

DISPOSAL: Remove twist-tie and lift attractant cartridge from panels. Collapse trap and fold panels down to keep beetles trapped. Wrap the trap and the cartridge in newspaper and deposit in household trash for collection. Wash hands with soap and water.