



UNITED STATES ENVIRONMENTAL PROTECTION AGENCY
WASHINGTON, D.C. 20460

OFFICE OF CHEMICAL SAFETY
AND POLLUTION PREVENTION

January 23, 2018

Cynthia Ann Smith
Agent to Bull Run Scientific, VBT
c/o Conn & Smith, Inc.
6713 Catskill Road
Lorton, VA 22079-1113

Subject: Non-PRIA (Pesticide Registration Improvement Act) Labeling Amendment – To Change the Design of the Bull Run Japanese & Oriental Beetle Trap and Associated Minor Text Changes to the Directions for Use
Product Name: Bull Run Japanese & Oriental Beetle Trap
EPA Registration Number: 84565-1
Application Date: 10/24/2017
OPP Decision Number: 535215

Dear Ms. Smith:

The amended labeling referred to above, submitted in connection with registration under the Federal Insecticide, Fungicide, and Rodenticide Act (FIFRA), as amended, is acceptable.

This approval does not affect any terms or conditions that were previously imposed on this registration. You continue to be subject to existing terms or conditions on your registration and any deadlines connected with them.

A stamped copy of your labeling is enclosed for your records. This labeling supersedes all previously accepted labeling. You must submit one (1) copy of the final printed labeling before you release this product for shipment with the new labeling. In accordance with 40 CFR § 152.130(c), you may distribute or sell this product under the previously approved labeling for 18 months from the date of this letter. After 18 months, you may only distribute or sell this product if it bears this new revised labeling or subsequently approved labeling. "To distribute or sell" is defined under FIFRA section 2(gg) and its implementing regulation at 40 CFR § 152.3.

Should you wish to add/retain a reference to your company's website on your label, then please be aware that the website becomes labeling under FIFRA and is subject to review by the U.S. Environmental Protection Agency (EPA). If the website is false or misleading, the product will be considered to be misbranded and sale or distribution of the product is unlawful under FIFRA section 12(a)(1)(E). 40 CFR § 156.10(a)(5) lists examples of statements the EPA may consider false or misleading. In addition, regardless of whether a website is referenced on your product's label, claims made on the website may not substantially differ from those claims approved through the registration

Page 2 of 2

EPA Reg. No. 84565-1

OPP Decision No. 535215

process. Therefore, should the EPA find or if it is brought to our attention that a website contains false or misleading statements or claims substantially differing from the EPA-approved registration, the website will be referred to the EPA's Office of Enforcement and Compliance Assurance.

Your release for shipment of this product constitutes acceptance of these terms. If these terms are not complied with, this registration will be subject to cancellation in accordance with FIFRA section 6.

If you have any questions, please contact Elyse Bilardo by phone at (703) 347-0182 or via email at bilardo.elyse@epa.gov.

Sincerely,

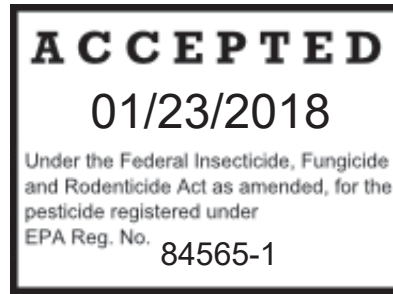
A handwritten signature in black ink, appearing to read "Andrew Bryceland", is written over a light blue rectangular stamp.

Andrew Bryceland, Team Leader
Biochemical Pesticides Branch
Biopesticides and Pollution
Prevention Division (7511P)
Office of Pesticide Programs

Enclosure: Master Label

[Front Panel]

[Optional text]
Model JBTZ
Model JBTD



[Optional text for Model JBTZ]
One-Season Reusable
[Optional text for Model JBTD]
Disposable

Bull Run Japanese & Oriental Beetle Trap

Attractant lasts entire season
Lasts 8 Weeks

[Optional text for Model JBTZ]
Slide-lock bottom allows trap to be emptied and reused

Non-toxic mode of action

Protects your flowers, fruits, vegetables & lawns from destructive Japanese beetles and Oriental beetles

- Large capacity
- Durable, two-layer bag
- Welded design; bag stays attached
- Formulated to attract and trap beetles in your yard
- Central attractant placement lures beetles from all directions

[Optional text for Model JBTZ]
• Open to empty beetles when full

INGREDIENTS	
ACTIVE INGREDIENTS:	
Floral Attractants:	
Eugenol	15.480%
Geraniol	6.622%
2-Phenethyl propionate	6.622%
Pheromones (Sex Attractants):	
Oriental beetle pheromone *	0.034%
Nuranone** (Japanese beetle pheromone)	0.013%
OTHER INGREDIENTS	71.229%
TOTAL	100.000%

* Z-7-Tetradecen-2-one; 2.0 mg/dispenser
** (R,Z)-5-(1-decenyl)dihydro-2(3H)-furanone; 0.76 mg/dispenser

Keep Out of Reach of Children
CAUTION

NET CONTENTS: 0.21 Ounces (5.8 Grams)

[Back Panel]

Bull Run Japanese & Oriental Beetle Trap

Protects your flowers, fruits, vegetables & lawns from destructive Japanese beetles and Oriental beetles.

The Bull Run Japanese Beetle & Oriental Beetle Trap uses a scientifically designed method to control the release of natural floral and sex attractants to lure both male and female beetles to the trap. Once attracted, beetles fly into the large yellow panels and are stunned by the impact. They then fall into the attached bag.

JAPANESE BEETLE FEEDING & FLIGHT PATTERNS:

Beetles prefer ripening fruit and plants exposed to direct sunlight. They will congregate on top foliage and work down. Specific odors created by feeding beetles will lure more beetles to that location. Beetles are most active on warm, sunny days. Activity peaks between 9 a.m. and 3 p.m., or when temperatures reach 83-95°F (28-35°C). When humidity falls below 60%, Japanese beetles are less likely to fly, and will stay put feeding wherever they are.

ORIENTAL BEETLE FEEDING & FLIGHT PATTERNS:

Adults do their flying and feeding at night. They will feed on petals of flowers including daisies, roses and petunia. The larval stage is the most destructive, feeding on roots of turfgrass and ornamental plants; catching adult Oriental beetles will reduce this population.

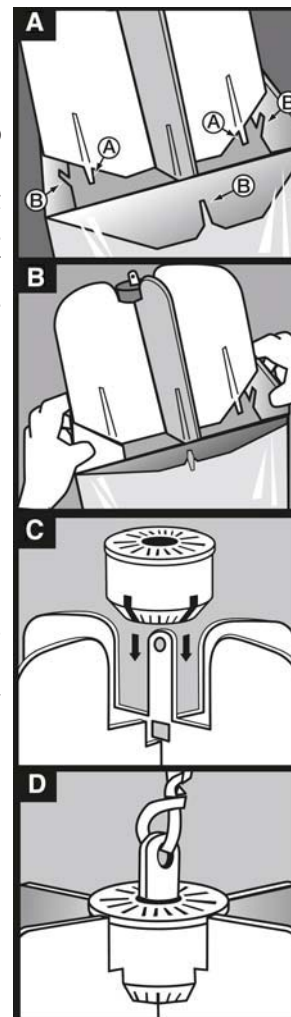
DIRECTIONS FOR USE

It is a violation of Federal law to use this product in a manner inconsistent with its labeling.

ASSEMBLY:

1. Unfold top of bag where panels are attached. Hold trap upside down to drop attractant cartridge and twist tie out of the bag.
2. (FIGURE A) Panels have side flaps which form a funnel inside bag and restrict the opening to keep beetles from escaping. Notches at bottom of side flaps are shown as PART B and should be snapped onto thin posts shown as PART A. (FIGURE B) From outside of bag, push in on each side flap so that its notches snap onto the posts. Continue until all four sides are in place.
3. Remove attractant cartridge from wrapper.
4. (FIGURE C) Slip cartridge, flat side up, over hanging tab, line up slots and snap in place.
5. (FIGURE D) Thread twist-tie through hole on top of center panels.
6. Attach trap tightly with a twist-tie to stake or pole 4 feet above the ground, at least 30 feet from the foliage to be protected.
7. Wash hands with soap and water.

TRAP PLACEMENT: Place traps at least 30 feet from ornamental plants to lure beetles away from the area where they may cause damage. 1-3 traps provide control in the average yard. DO NOT place more than 8 traps per acre (1 trap per 10,890 square feet).



[Optional text for Model JBTZ]

EMPTYING and REUSING: Open bottom of bag using handles and easy-lock opening, empty beetles into garbage sack and dispose in household trash. Press easy-lock opening back together to reseal it before rehanging trap. For best results, rinse inside of trap thoroughly, clearing any beetle parts which are obstructing slide-lock closure before resealing and rehanging trap.

STORAGE AND DISPOSAL

Do not contaminate water, food or feed by storage or disposal.

STORAGE: Store in a cool, dry, well ventilated location out of reach of children.

DISPOSAL: Remove twist-tie and lift attractant cartridge from panels. Collapse trap and fold panels down to keep beetles trapped. Wrap the trap and the cartridge in newspaper and deposit in household trash for collection. Wash hands with soap and water.