



U.S. ENVIRONMENTAL PROTECTION AGENCY

Office of Pesticide Programs
Registration Division (7505T)
1200 Pennsylvania Ave., N.W.
Washington, D.C. 20460

EPA Reg. Number:

83742-4

Date of Issuance:

9/12/25

NOTICE OF PESTICIDE:

☒ Registration
☐ Reregistration
(under FIFRA, as amended)

Term of Issuance:

Unconditional

Name of Pesticide Product:

Shoreline Defense Cattail &
Emergent Weed Control

Name and Address of Registrant (include ZIP Code):

The Pond Guy, Inc. d/b/a Airmax, Inc.
c/o Pyxis Regulatory Consulting Inc.
4110 136th St. Ct. NW
Gig Harbor, WA 98332

Note: Changes in labeling differing in substance from that accepted in connection with this registration must be submitted to and accepted by the Registration Division prior to use of the label in commerce. In any correspondence on this product always refer to the above EPA registration number.

On the basis of information furnished by the registrant, the above named pesticide is hereby registered under the Federal Insecticide, Fungicide, and Rodenticide Act (FIFRA).

Registration is in no way to be construed as an endorsement or recommendation of this product by the Agency. In order to protect health and the environment, the Administrator, on his motion, may at any time suspend or cancel the registration of a pesticide in accordance with the Act. The acceptance of any name in connection with the registration of a product under this Act is not to be construed as giving the registrant a right to exclusive use of the name or to its use if it has been covered by others.

This product is unconditionally registered in accordance with FIFRA section 3(c)(5) provided that you:

1. Submit and/or cite all data required for registration/reregistration/registration review of your product when the Agency requires all registrants of similar products to submit such data.

Continues page 2

Signature of Approving Official:

Emily Schmid

Emily Schmid, Product Manager 25
Herbicide Branch, Registration Division (7505T)

Date:

9/12/25

2. Make the following label changes before you release the product for shipment:
 - Revise the EPA Registration Number to read, "EPA Reg. No. 83742-4."
3. Submit one copy of the final printed label for the record before you release the product for shipment.

Should you wish to add/retain a reference to the company's website on your label, then please be aware that the website becomes labeling under FIFRA and is subject to review by the Agency. If the website is false or misleading, the product would be misbranded and unlawful to sell or distribute under FIFRA section 12(a)(1)(E). 40 CFR 156.10(a)(5) lists examples of statements EPA may consider false or misleading. In addition, regardless of whether a website is referenced on your product's label, claims made on the website may not substantially differ from those claims approved through the registration process. Therefore, should the Agency find or if it is brought to our attention that a website contains false or misleading statements or claims substantially differing from the EPA approved registration, the website will be referred to the EPA's Office of Enforcement and Compliance.

If these conditions are not complied with, the registration will be subject to cancellation in accordance with FIFRA section 6. Your release for shipment of the product constitutes acceptance of these conditions. A stamped copy of the label is enclosed for your records.

The record for this product currently contains the following CSF(s):

- Basic CSF dated 6/13/2024

If you have any questions, please contact Lydia Crawford at 202-566-2575 or at crawford.lydia@epa.gov.

Enclosure

[Note to reviewer: [Text] in brackets denotes optional text].
[Note to reviewer: {Text} in braces denotes where in the final label text will appear].

[Company logo]

Shoreline Defense Cattail & Emergent Weed Control

Controls emergent weeds around water: Shorelines, rivers and streams, docks and ditch banks.

Active Ingredient:

Glyphosate: N-(phosphonomethyl)glycine,
isopropylamine salt..... 53.8%

Other Ingredients..... 46.2%

Total..... 100.0%

Contains 5.4 lbs. per gallon glyphosate, isopropylamine salt (4 lbs. per gallon glyphosate acid).

KEEP OUT OF REACH OF CHILDREN

CAUTION

[See] [inside] [label] [booklet] [for] [First Aid] [.] [additional] [Precautionary Statements] [.] [and] [Directions
for Use] [including] [Storage and Disposal] [instructions] [.]

Agricultural Chemical: Do not ship or store with food, feeds, drugs or clothing.

Manufactured for:

Airmax® Inc.

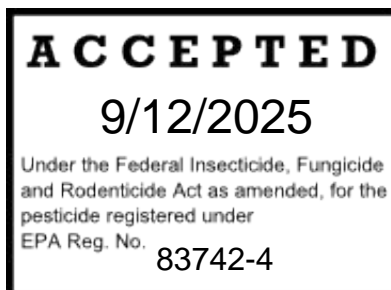
15425 Chets Way St.

Armada, MI 48005

EPA Reg. No. 83742-xx

EPA Est. No.

Net Contents:



FIRST AID	
IF INHALED:	<ul style="list-style-type: none"> • Move person to fresh air. • If person is not breathing, call 911 or an ambulance, then give artificial respiration, preferably by mouth-to-mouth if possible. • Call a poison control center or doctor for treatment advice.
HOT LINE NUMBER	
Have the product container or label with you when calling a poison control center or doctor or going for treatment. You may also contact 1-800-424-9300 for emergency medical treatment information.	

PRECAUTIONARY STATEMENTS

HAZARDS TO HUMANS AND DOMESTIC ANIMALS

CAUTION

Harmful if inhaled. Avoid breathing spray mist. Remove and wash contaminated clothing before reuse. Wash hands thoroughly with soap and water after handling and before eating, drinking, chewing gum, using tobacco, or using the toilet.

ENVIRONMENTAL HAZARDS

Do not contaminate water when cleaning equipment or disposing of equipment washwaters. Treatment of aquatic weeds can result in oxygen depletion or loss due to decomposition of dead plants. This oxygen loss can cause fish suffocation.

In case of leak or spill, soak up and remove to a landfill.

PHYSICAL OR CHEMICAL HAZARDS

Spray solutions of this product should be mixed, stored, and applied using only stainless steel, aluminum, fiberglass, plastic or plastic-lined steel containers.

Do not apply this product in a way that will contact applicator or other persons, either directly or through drift. Only protected handlers may be in the area during application. For any requirements specific to your state or tribe, consult the agency responsible for pesticide regulations.

Do not mix, store or apply this product or spray solutions of this product in galvanized steel or unlined steel (except stainless steel) containers or spray tanks. This product or spray solution of this product react with such containers and tanks to produce hydrogen gas, which may form a highly combustible gas mixture. This gas mixture could flash or explode causing serious person injury. If ignited by open flame, spark, welder's torch, lighted cigarette or other ignition source.

DIRECTIONS FOR USE

It is a violation of Federal Law to use this product in a manner inconsistent with its labeling. Read all Directions for Use carefully before applying.

How Shoreline Defense Cattail & Emergent Weed Control Works

This product is a systemic herbicide that when absorbed through the leaves, moves down through the plant into the root system. It inhibits an enzyme found only in plants (not in humans or animals), essential to forming amino acids. Glyphosate is strongly absorbed to soil and is readily degraded by soil microbes. This product will not move in soils to untreated plants. Wilting and yellowing of treated plants will occur within 5 - 7 days and progress gradually throughout the plant.

When to Apply

Apply Shoreline Defense Cattail & Emergent Weed Control when weeds are emerged and actively growing. Spray when the air is calm to minimize drift to desirable plants. Avoid spraying desirable plants as severe injury may result. Product is rainfast after 6 hours.

Where to Apply

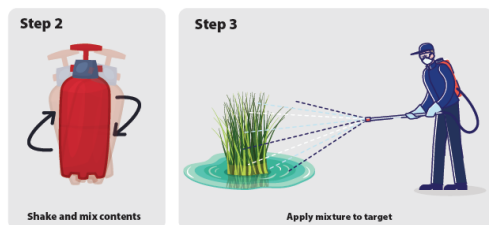
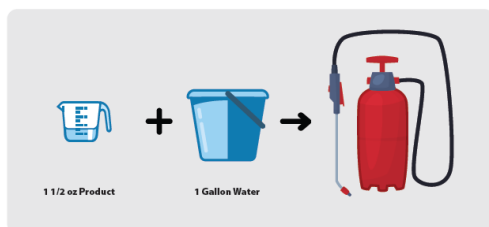
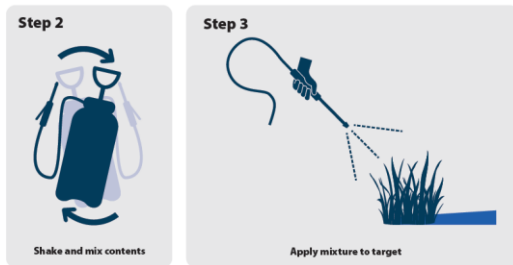
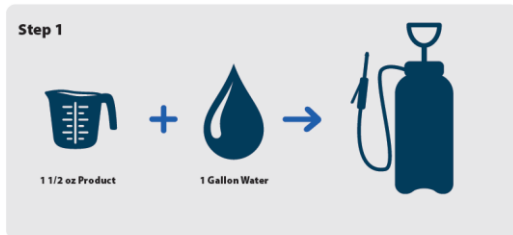
- Along shorelines of lakes, reservoirs and ponds
- Around docks or piers
- Berms
- Canals

- Ditch banks
- Drainage or irrigation channels
- Embankments
- Riparian zone (vegetated area along streams or rivers)
- Riprap and other erosion control measures
- Wetlands and other natural areas

How to Apply

- This product mixes readily with water. Add 3 fl. oz. to 1 gallon of water to sprayer tank.
- Add an aquatic non-ionic surfactant at a rate specified on that product's label.
- Close sprayer, shake/swirl well.
- If possible, adjust nozzle tip to apply a coarse spray. Spray directly on plants you want to control until they look glossy wet.

[Note to reviewer: Only one of the step-by-step illustrations on how to apply below will appear on the final printed labeling]



- [One gallon of spray solution covers approximately 300 sq. ft.]
- [One quart makes 10.66 gallons of spray solution, treats 3,198 sq. ft.]
- [One pint treats up to 1,600 square feet.]

Tips for Best Results

- Apply to foliage of vegetation to be controlled, insure complete, uniform coverage.
- Some species may require retreatment up to the labeled rate to achieve complete control.
- This product does not control plants that are completely submerged or have a majority of their foliage underwater. Do not apply this product directly to water where no emergent vegetation is growing.
- There are no restrictions on the use of treated water for irrigation, recreation or domestic purposes.

Use Shoreline Defense Cattail & Emergent Weed Control to Treat Susceptible Weeds:

alligator weed
American lotus
cattail
phragmites spp.
purple loosestrife
sedge spp.
smartweed spp.
spatterdock/cow lily
torpedograss
waterhyacinth
waterlettuce
waterprimrose
willow spp.

Aquatic Sites

This product may be applied to emerged weeds in all bodies of fresh and brackish water that may be flowing, nonflowing or transient including the following:

- along shorelines of lakes, reservoirs and ponds
- around docks or piers
- berms
- canals
- ditch banks
- drainage or irrigation channels
- embankments
- riparian zone (vegetated area along streams or rivers)
- riprap and other erosion control measures
- wetlands and other natural areas

If aquatic sites are present in the non-crop area and are part of the intended treatment, read and observe the following:

Precautions:

- For treatments after draw down of water or in dry ditches, allow 7 days or more after treatment before reintroduction of water to achieve maximum weed control. Apply this product within 1 day after draw down to ensure application to actively growing weeds.
- When emerged infestations require treatment of the total surface area of impounded water, treating the area in strips may avoid oxygen depletion due to decaying vegetation. Oxygen depletion may result in fish kill.

Restrictions:

- Consult local and state fish and game agency and water control authorities before applying this product to public water. Permits may be required to treat such water.
- To make aquatic applications around and within 1/2 mile of active potable water intakes, the water intake must be turned off for a minimum period of 48 hours after the application. The water intake may be turned on prior to 48 hours if the glyphosate level in the intake water is below 0.7 parts per million as determined by laboratory analysis. These aquatic applications can only be made in those

cases where there are alternative water sources or holding ponds which would permit the turning off of an active potable water intake for a minimum period of 48 hours after the application.

- Floating mats of vegetation may require retreatment up to the labeled rate. Do not allow wash off of sprayed foliage by spray boat or recreational boat backwash or by rainfall within 6 hours of application. Do not re-treat within 24 hours following the initial treatment.
- Applications made to moving bodies of water must be made while traveling upstream to prevent concentration of this herbicide in water. When making any bankside applications, do not overlap more than 1 foot into open water. Do not spray in bodies of water where weeds do not exist. The maximum application rate of 7 1/2 pints per acre must not be exceeded in any single broadcast application that is being made over water.
- Do not apply this product directly to water within 1/2 mile upstream of an active potable water intake in flowing water (i.e., river, stream, etc.), or within 1/2 mile of an active potable water intake in a standing body of water, such as a lake, pond or reservoir. This restriction does not apply to intermittent inadvertent overspray of water in terrestrial use sites.
- Do not spray open bodies of water where woody brush, trees and herbaceous weeds do not exist. Do not apply more than 7 1/2 pints per acre in a single over water broadcast application except in stream crossings in utility right-of-way or where applications will result in less than 20 percent of the total water area being treated. In either of these locations, any specified rate may be applied.

STORAGE AND DISPOSAL

Do not contaminate water, foodstuffs, feed or seed by storage or disposal.

Pesticide Storage: Store above 10°F (-12°C) to keep product from crystallizing. Crystals will settle to the bottom. If allowed to crystallize, place in a warm room 68°F (20°C) for several days to redissolve and roll or shake container or recirculate in mini-bulk or bulk container to mix well before using.

Container Handling: Nonrefillable container. Do not reuse or refill this container. If empty: Place in trash or offer for recycling if available. If partly filled: Call your local solid waste agency for disposal instructions. Never place unused product down any indoor or outdoor drain.

CONDITIONS OF SALE AND LIMITATION OF WARRANTY AND LIABILITY

To the extent consistent with applicable law, upon purchase or use of this product, purchaser and user agree to the following terms:

Warranty: Airmax Inc. (the Company) warrants that this product conforms to the chemical description on the label in all material respects and is reasonably fit for the purpose referred to in the directions for use, subject to the exceptions noted below, which are beyond the Company's control. To the extent consistent with applicable law, the Company makes no other representation or warranty, express or implied, concerning the product, including no implied warranty of merchantability or fitness for a particular purpose. To the extent consistent with applicable law, no such warranty shall be implied by law, and no agent or representative is authorized to make any such warranty on the Company's behalf.

Terms of Sale: The Company's directions for use of this product must be followed carefully. It is impossible to eliminate all risks inherently associated with use of this product. Crop injury, ineffectiveness or other unintended consequences may result because of such factors as weather conditions, presence of other materials and the manner of use or application (including failure to adhere to label directions), all of which are beyond the Company's control. To the extent consistent with applicable law, all such risks are assumed by the user.

Limitation of Liability: To the extent consistent with applicable law, the exclusive remedy against the Company for any cause of action relating to the handling or use of this product is a claim for damages, and in no event shall damages or any other recovery of any kind exceed the price of the product which caused the alleged loss, damage, injury or other claim. To the extent consistent with applicable law, under no circumstances shall the Company be liable for any special, indirect, incidental or consequential damages of any kind, including loss of profits or income. Some states do not allow the exclusion or limitation of incidental or consequential damages.

The Company and the seller offer this product, and the purchaser and user accept this product, subject to the foregoing warranty, terms of sale and limitation of liability, which may be varied or modified only by an agreement in writing signed on behalf of the Company by an authorized representative.

[EPA approval date]

[Optional Marketing Statements/Graphics]



Controls shoreline nuisance vegetation

- Kills broadleaf and grass weeds
- Provides a complete kill, including the roots
- Safe to apply to weeds around water

Can be applied: Summer, Spring, Fall

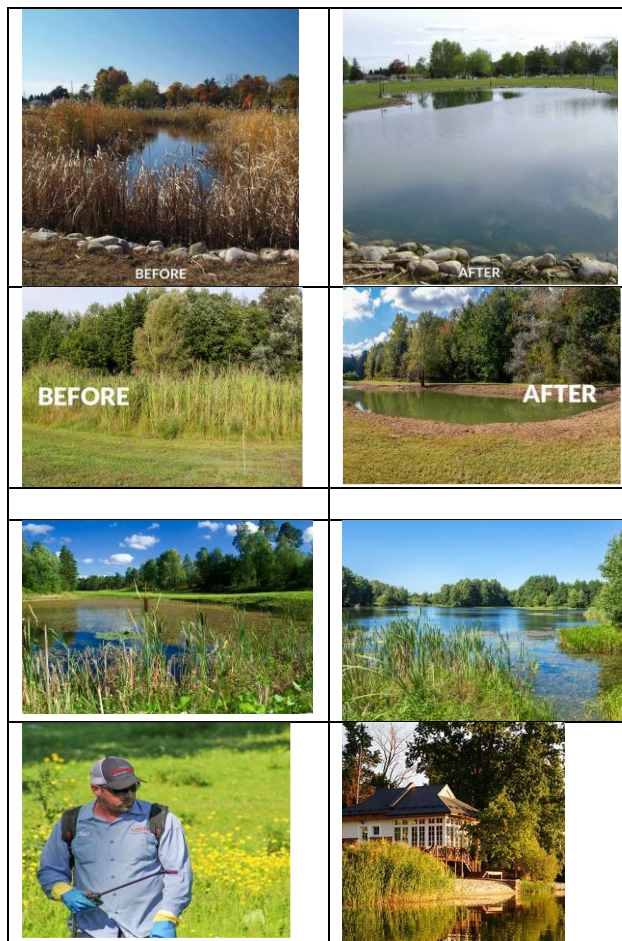
Application Guidance

Mix 3 fl. oz. of this product to 1 gallon of water

Add an aquatic non-ionic surfactant

One pint treats up to 1,600 square feet

Rainfast in 6 hours, typically provides visible results in 5-7 days





Representative image of
alligator weed



Representative image
of American lotus



Representative image of
cattail



Representative image
of phragmites spp.



Representative image of
purple loosestrife



Representative image
of sedge spp.



Representative image of smartweed spp.



Representative image of spatterdock/cow lily



Representative image of torpedograss



Representative image of waterhyacinth



Representative image of waterlettuce



Representative image of waterprimrose



Representative image of willow spp.

