

80346-1

8/6/2008

10f19



UNITED STATES ENVIRONMENTAL PROTECTION AGENCY
WASHINGTON D.C., 20460

OFFICE OF
PREVENTION, PESTICIDES AND
TOXIC SUBSTANCES

AUG 6 2008

Ag-Chem Consulting
Pesticide Science and Registration
c/o for Modec, Inc.
12208 Quinque Lane
Clifton, VA 20124

Attention: Dr. Matthew Brooks
Regulatory Specialist

Subject: MDF-200 Bottle (Part A)
EPA Reg. No. 80346-1
Amendment Letter Dated July 3, 2008

This will acknowledge receipt of your notification submitted under the provisions of FIFRA Section 3(c) (9). Based on a review of the submitted material, the following apply:

Notification of an Alternate Brand Name: **"Bio-Rescue"**

The Notification is in compliance with PR Notice 98-10 and is acceptable. This information has been made a part of your file.

If you have any questions concerning this letter, please contact Demson Fuller at (703) 308-8062.

Sincerely,

A handwritten signature in black ink that reads "M Swindell".

Marshall Swindell
Product Manager (33)
Regulatory Management Branch 1
Antimicrobials Division (7510C)

2099

Please read instructions on reverse before completing.

Form Approved, OM J. 2070-0060, Approval expires 2-28-95



United States
Environmental Protection Agency
Washington, DC 20460

Registration
 Amendment
 Other

OPP Identifier Number

Application for Pesticide - Section I

1. Company/Product Number Modec Inc./80346-1	2. EPA Product Manager Marshall Swindell	3. Proposed Classification <input checked="" type="checkbox"/> None <input type="checkbox"/> Restricted
4. Company/Product (Name) Modec Inc./ MDF-200 Part A	PM# 33	
5. Name and Address of Applicant (Include ZIP Code) Modec Inc. 4725 Oakland St. Denver CO 80239 <input type="checkbox"/> Check if this is a new address	6. Expedited Review. In accordance with FIFRA Section 3(c)(3)(b)(i), my product is similar or identical in composition and labeling to: EPA Reg. No. _____ Product Name _____	

Section - II

<input type="checkbox"/> Amendment - Explain below.	<input checked="" type="checkbox"/> Final printed labels in response to Agency letter dated _____
<input type="checkbox"/> Resubmission in response to Agency letter dated _____	<input type="checkbox"/> "Me Too" Application.
<input checked="" type="checkbox"/> Notification - Explain below.	<input type="checkbox"/> Other - Explain below.

Explanation: Use additional page(s) if necessary. (For section I and Section II.)

Notification of Additional Brand Name Bio-Rescue.
This notification is consistent with the provisions of PR Notice 98-10 and EPA regulations at 40CFR 152.46, and no other changes have been made to the labeling or the confidential statement of formula of this product. I understand that it is a violation of 18 U.S.C. Sec 1001 to willfully make any false statement to EPA. I further understand that if this notification is not consistent with the terms of PR Notice 98-10 and 40CFR152.46, this product may be in violation of FIFRA and I may be subject to enforcement action and penalties under sections 12 and 14 of FIFRA.

Section - III

1. Material This Product Will Be Packaged In:				2. Type of Container	
Child-Resistant Packaging <input type="checkbox"/> Yes <input checked="" type="checkbox"/> No	Unit Packaging <input checked="" type="checkbox"/> Yes <input type="checkbox"/> No	Water Soluble Packaging <input type="checkbox"/> Yes <input checked="" type="checkbox"/> No		<input type="checkbox"/> Metal	<input checked="" type="checkbox"/> Plastic
* Certification must be submitted		If "Yes" Unit Packaging wgt.	No. per container	If "Yes" Package wgt	No. per container
					<input type="checkbox"/> Glass
					<input type="checkbox"/> Paper
					Other (Specify) _____
3. Location of Net Contents Information <input checked="" type="checkbox"/> Label <input type="checkbox"/> Container		4. Size(s) Retail Container 0.5 oz.		5. Location of Label Directions <input checked="" type="checkbox"/>	
6. Manner in Which Label is Affixed to Product		<input checked="" type="checkbox"/> Lithograph Paper glued Stenciled		<input type="checkbox"/> Other _____	

Section - IV

1. Contact Point (Complete items directly below for identification of individual to be contacted, if necessary, to process this application.)		
Name Dr. Matthew Brooks	Title Regulatory Consultant	Telephone No. (Include Area Code) 703-266-0128
Certification I certify that the statements I have made on this form and all attachments thereto are true, accurate and complete. I acknowledge that any knowingly false or misleading statement may be punishable by fine or imprisonment or both under applicable law.		6. Date Application Received (Stamped)
2. Signature 	3. Title Regulatory Consultant	
4. Typed Name Dr. Matthew Brooks	5. Date 07/02/08	



Ag-Chem Consulting
Pesticide Science and Registration
12208 Quinque Lane, Clifton VA 20124
(703) 266-0128 mwbrooks01@yahoo.com
(703) 266-4377 Fax

30 of 19

July 3, 2008

To: Marshall Swindell
Antimicrobials Division
OPPTS
One Potomac Yard
2777 S. Crystal Dr.
Arlington Virginia 22202

RE: Modec MDF 200 Part A
EPA Registration Number 80346-1
Additional Brand Name

Dear Mr. Swindell:

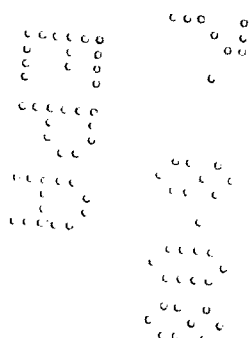
Attached please find a notification to add the additional brand name **Bio-Rescue**.

An example of the proposed additional brand name label is attached.

Please feel free to contact me at 703-266-0128 if you have any questions concerning this submission.

Sincerely,

Matthew W. Brooks, Ph.D.
Ag-Chem Consulting LLC.
Authorized Representative of Modec



First Aid

IF SWALLOWED: Call a poison control center or doctor immediately for treatment advice. Have a person sip a glass of water if able to swallow. Do not induce vomiting unless told to do so by a poison control center or doctor. Do not give anything by mouth to an unconscious person.

IF IN EYES: Hold eye open and rinse slowly and gently with water for 15-20 minutes. Remove contact lenses, if present, after the first 5 minutes, then continue rinsing. Call a poison control center or doctor for further treatment advice.

IF ON SKIN: Take off contaminated clothing. Rinse skin immediately with plenty of water for 15-20 minutes. Call a poison control center or doctor for further treatment advice.

IF INHALED: Move person to fresh air. If person is not breathing, call 911 or an ambulance, then give artificial respiration, preferably mouth to mouth, if possible. Call a poison control center or doctor for further treatment advice.

NOTE TO PHYSICIAN

Probable mucosal damage may contraindicate the use of gastric lavage.

Antibacterial Disinfectant and Cleaner

Advanced Restoration, Remediation & Disinfectant System
Coverage up to 500 square feet

Technology originally developed and patented by Sandia National Laboratories.
A Serious Product for a Serious Problem
BIO-RESCUE is Produced Commercially using the Formula Licensed by Sandia National Laboratories

Foaming Action

- Inhibits and Retards Growth of Mold, Mildew and Fungus on Porous and nonporous Surfaces.
- Shown to be effective against the pathogenic bacteria Staphylococcus aureus, Salmonella choleraesuis, and Pseudomonas aeruginosa
- Cleans & Controls Mold Growth on Porous and Non-Porous Surfaces as listed on the label
- Cleaner, Mildewstat, Fungicide, Disinfectant, and Deodorizer
- Used in Schools, Hospitals, Homes, and Commercial Facilities

Before and After
Photo plate 1



Photo Plate 2

BIO-RESCUE is a breakthrough product based on technology originally developed and patented by Sandia National Laboratories.

BIO-RESCUE is commercially manufactured using the license from Sandia National Laboratories. BIO-RESCUE prevents mildew & fungus (the causative agent for Athlete's Foot) on hard nonporous surfaces and inhibits the growth of mold, mildew and fungal spores on wooden decks, cement, aluminum siding, wood siding and other porous and non-porous surfaces.

BIO-RESCUE effectively cleans and disinfects all hard nonporous surfaces including those in basements and bathrooms as well as metal, plastic and ceramic tile.

BIO-RESCUE cleans and inhibits the growth of mold and mildew on porous surfaces of fences, cement walkways, siding, wood, painted walls, metal, plastic, stucco, planters boxes, terracotta, and ceramic tile.

BIO-RESCUE is an effective biocide that cleans basements, bathrooms, fences, walkways and any other place mold grows.

STOPS MOLD GROW

Mold spores are ever-present in the environment and will grow when food and moisture are present.

**HAZARDS TO HUMANS AND DOMESTIC ANIMALS
DANGER**

Corrosive. Causes irreversible eye damage. Causes skin irritation. Harmful if inhaled. Do not get in eyes, on skin, or on clothing. Avoid breathing vapor or spray mist. Wear protective eyewear such as goggles, face shield or safety glasses. Wear chemical resistant gloves. Wash thoroughly with soap and water after handling and before eating, drinking, chewing gum, or using tobacco. Remove and wash contaminated clothing before reuse.

When Applied as an Aerosol

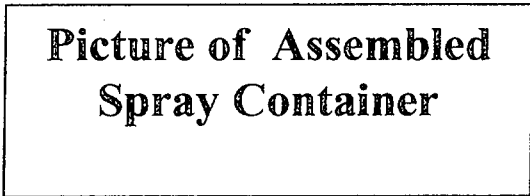


Photo Plate 3

ASSEMBLY: BIO-RESCUE is a two part system. Fill empty mixing container with equal portions of Part A and Part B. Screw mixing container onto the spray-bridge (dip-tube side). Snap aerosol container onto the small end of spray-bridge making sure container is firmly seated. **USE:** Depress round actuator tab of spray-bridge to dispense newly mixed solution.

Note: To prevent the possibility of spraying pure propellant from the aerosol container, do not allow liquid in mixing bottle to become empty during use. The combined liquid from Parts A & B remains active for 12 hours after mixing. Product must remain in contact with surface area for a minimum of 10 minutes.

Contents of aerosol container is under pressure. Do not puncture or incinerate container. Do not expose to heat, fire, sparks or flame. Do not store at temperatures above 120F.

Intentional misuse by intentionally or deliberately concentrating and inhaling contents can be harmful or fatal.

SURFACE CLEANING PROCEDURES

Prior to application of BIO-RESCUE as an antimicrobial agent, gross filth, heavy soil, blood and other bodily fluids must be thoroughly cleaned from surfaces and objects before application of this product. Blood and other bodily fluids should be autoclaved and disposed of according to local regulations and infectious waste disposal. Use appropriate personal protection when handling items exposed to blood and bodily fluids.

DIRECTIONS FOR USE

It is a violation of Federal law to use this product in a manner inconsistent with its labeling. The product is designed specifically as a general cleaner and disinfectant for use in homes, hospitals, and commercial facilities. It is formulated to disinfect hard, non-porous, inanimate environmental surfaces such as floors, walls, metal surfaces, stainless steel, porcelain, glazed ceramic tile, plastic surfaces, bathrooms, shower stalls, bathtubs, cabinets, and walls of swimming pools. May be used in the kitchen on non-food contact surfaces. In addition, this product deodorizes areas that are hard to keep fresh smelling including garbage cans, basements, restrooms and areas prone to odors caused by microorganisms.

“BIO-RESCUE” is a binary (two part) system.

Before use, mix equal parts of PART A and PART B. Apply the newly mixed solution as a spray onto surfaces as directed below.

DISINFECTION, DEODORIZING AND CLEANING – Prior to disinfection of surfaces, spray the mixture (Part A and Part B) onto the surface and allow to penetrate, and then clean all surfaces thoroughly. To disinfect surfaces reapply the mixture and allow to remain wet for ten minutes. No scrubbing is necessary. The product will not leave grit.

BACTERICIDAL ACTIVITY - When used as directed, this product exhibits effective disinfectant activity against the organisms: Staphylococcus aureus, including Methicillin-Resistant Staphylococcus aureus, Staphylococcus epidermidis, Salmonella choleraesuis, Pseudomonas aeruginosa, Klebsiella pneumoniae, Proteus mirabilis, Vancomycin-Resistant Enterococcus faecalis and Enterobacter aerogenes, Escherichia coli (0157:H7), Escherichia coli (ESBL), and Listeria monocytogenes. When used as directed, this product is virucidal against Influenza A and Influenza B virus. This product meets the requirements for hospital use.

FUNGICIDAL ACTIVITY - This product has been demonstrated to be fungicidal against *Trichophyton mentagrophytes*, *Aspergillus niger* and *Penicillium variable*. Use as directed on hard, non-porous surfaces.

9019

MOLD and MILDEW CONTROL- This product controls mold and mildew on porous and hard nonporous surfaces. Clean the surface to be treated, then spray with the product, making sure to wet completely. Let the surface air dry but surface must remain wet for at least 10 minutes. Reapply as necessary.

DEODORIZING - Mix equal parts of BIO-RESCUE PART A and BIO-RESCUE PART B and apply to surfaces until they appear wet to eliminate odors. Allow product to air dry or surface to remain wet for at least 10 minutes.

CONTACT TIME FOR ALL SURFACES - Allow surface to remain wet for 10 minutes.

Swimming Pool Applications

When used as directed, this product may be used as an algaecide to treat walls of swimming pools

Mix equal parts of BIO-RESCUE Part A and BIO-RESCUE Part B prior to application.

Algaecide Use

After draining or before filling pool, spray and scrub walls with product. Allow to remain on surface for 30 minutes prior to rinsing.

To Clean by Spray Applications

For outdoor use on cement, aluminum and wood siding, wood decks and roofs to inhibit the growth of mold and mildew.

Remove stains from surfaces prior to disinfection

BIO-RESCUE may be used to clean surfaces. Mix 4 ounces of BIO-RESCUE PART A and Part B into one gallon of water. Apply liberally to coat surfaces and allow to remain wet for 30 minutes. Scrub surface with sponge to remove stains.

SPRAYING – BIO-RESCUE is a binary (two part) system. Mix equal parts of BIO-RESCUE PART A and BIO-RESCUE PART B directly into ULV spray equipment. Apply mixed product at a rate of 1 ounce to 100-sq. ft. of surface area. Allow surface to air dry or remain wet for at least 30 minutes.

STORAGE AND DISPOSAL

Do not contaminate water, food, or feed by storage or disposal.

STORAGE – Store in a dry place no lower in temperature than 50°F or higher than 120°F.

CONTAINER DISPOSAL – Do not reuse empty container. Rinse empty container with water. Plastic containers may be disposed of in a sanitary landfill, incinerated, or if allowed by local authorities, by burning. If burned, stay out of smoke. For containers 1 gallon or more: Do not reuse empty container (bottle, can, and bucket). Wrap container and put in trash.

10 of 19

PESTICIDE DISPOSAL – Pesticide wastes are acutely hazardous. Improper disposal of excess pesticide, spray mixture, or rinse is a violation of Federal Law. If these wastes cannot be disposed of by use according to label instructions contact your State Pesticide or Environmental Control Agency, or the Hazardous Waste Representative at the nearest EPA Regional Office for guidance.

EPA REG. NO. 80346- 1 (Part A)
EPA REG. NO. 80346- 2 (Part B)
EPA EST. NO. 65001-CO-01

US. Patent No. 6,566,574 B1 Made in USA

Manufactured by Modec, Inc. - 4725 Oakland Street
Denver, Colorado 80239 - 800-967-7887
1-800-967-7887 - www.deconsolutions.com
info@deconsolutions.com

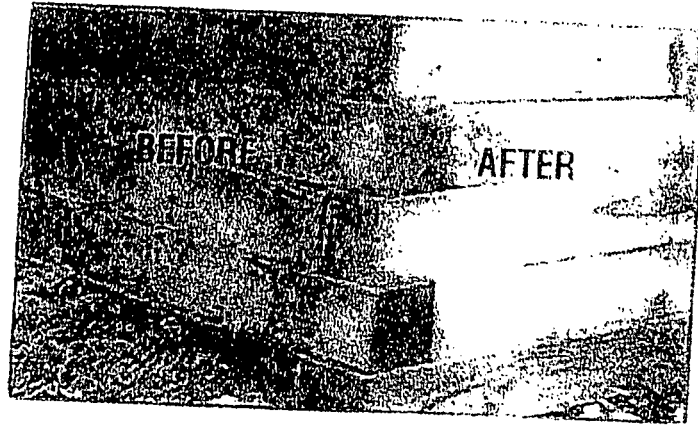


Photo Plate 1



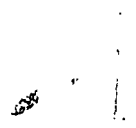
BEFORE



AFTER



BEFORE



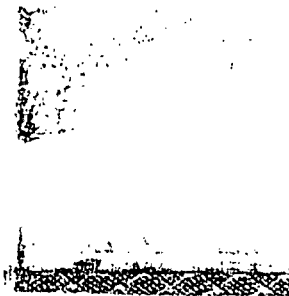
AFTER



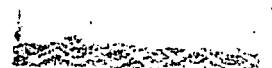
BEFORE



AFTER

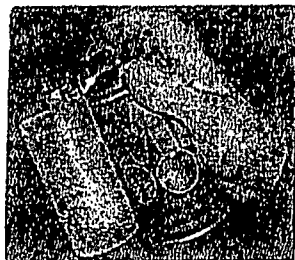


BEFORE



AFTER

Photo Plate 2



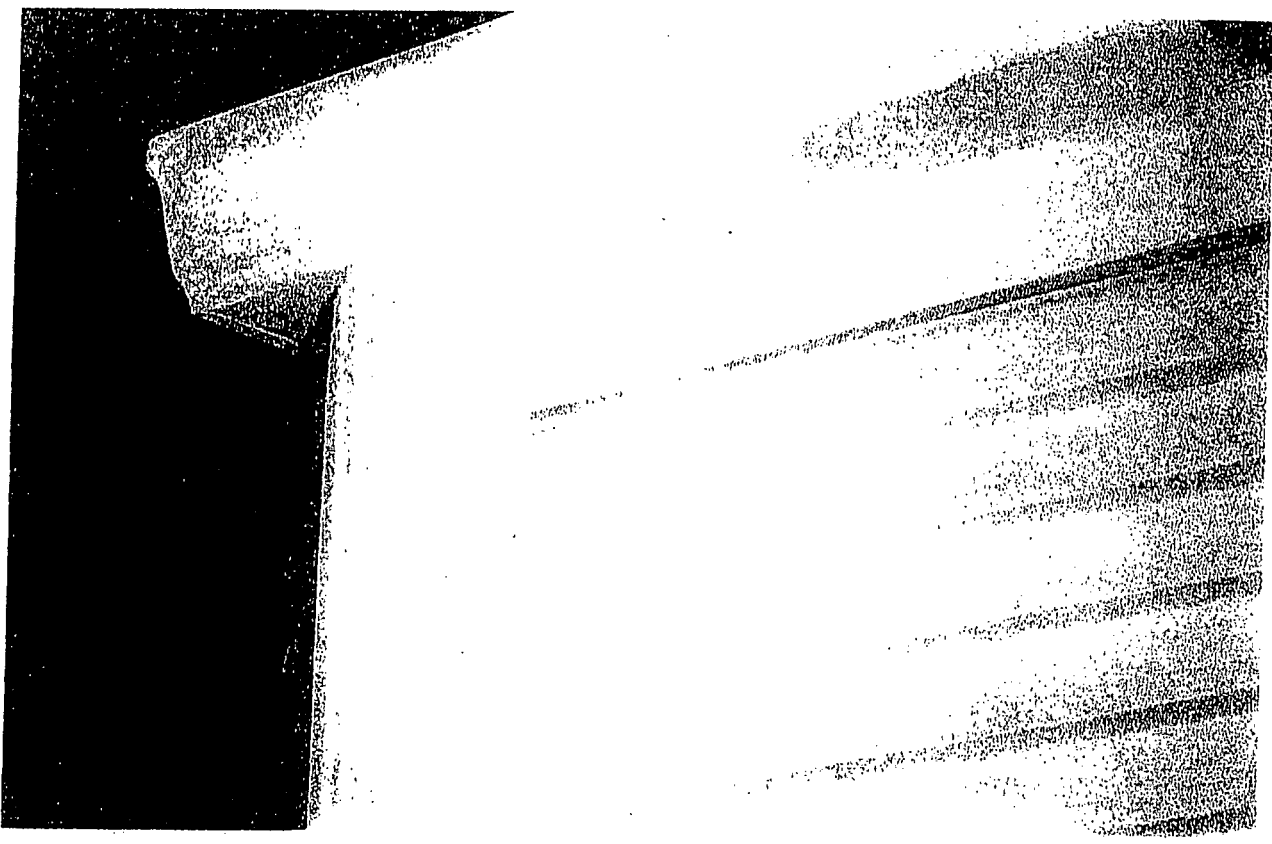
ASSEMBLY & USE: MOLD SOLUTION is a binary [2-part] system. Assemble spray attachment by inserting dip tube onto spray tip. Fill empty mixing container with equal portions of PART A and PART B. Place dip tube into mixing container and screw on firmly to seal. Snap small end of spray attachment onto power spray, making sure attachment is seated firmly. The combined liquid remains active for 12 hours after mixing and must be in contact with the mold for 10 minutes. Covers up to 500 square feet.

Photo Plate 3

130f19

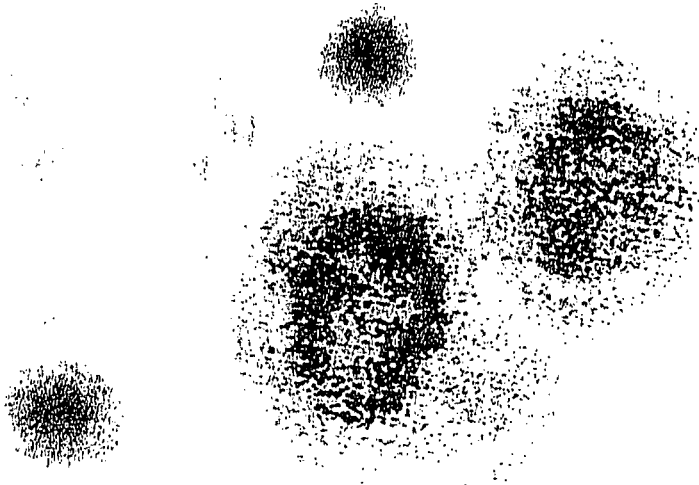


siding before
Image_0027.jpg



siding after
01302006 (6).jpg

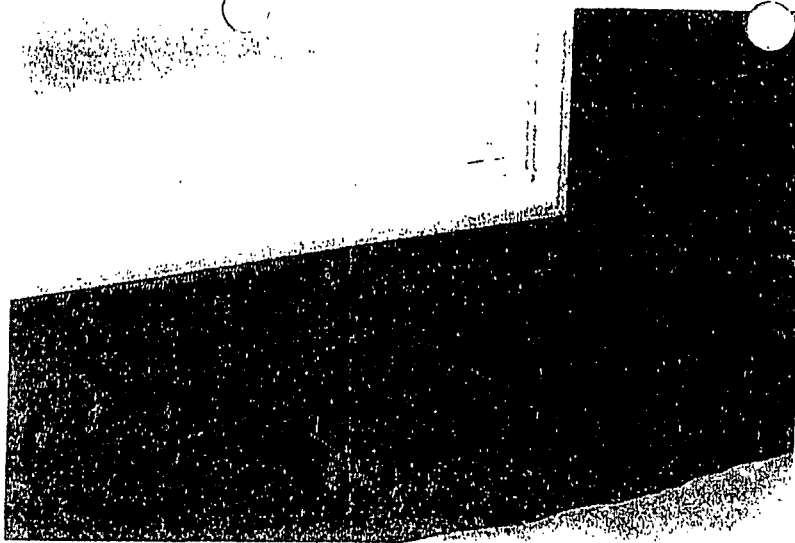
140A19



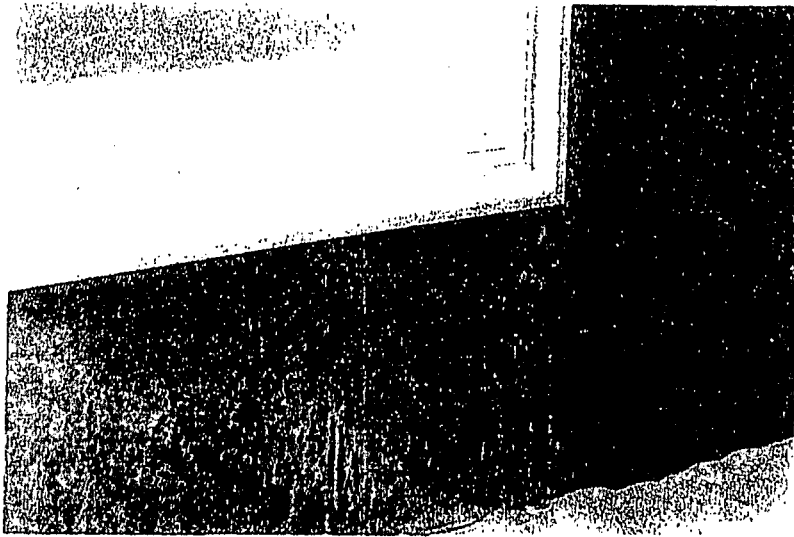
basement before
01302006 (7).jpg



basement after
01302006 (9).jpg



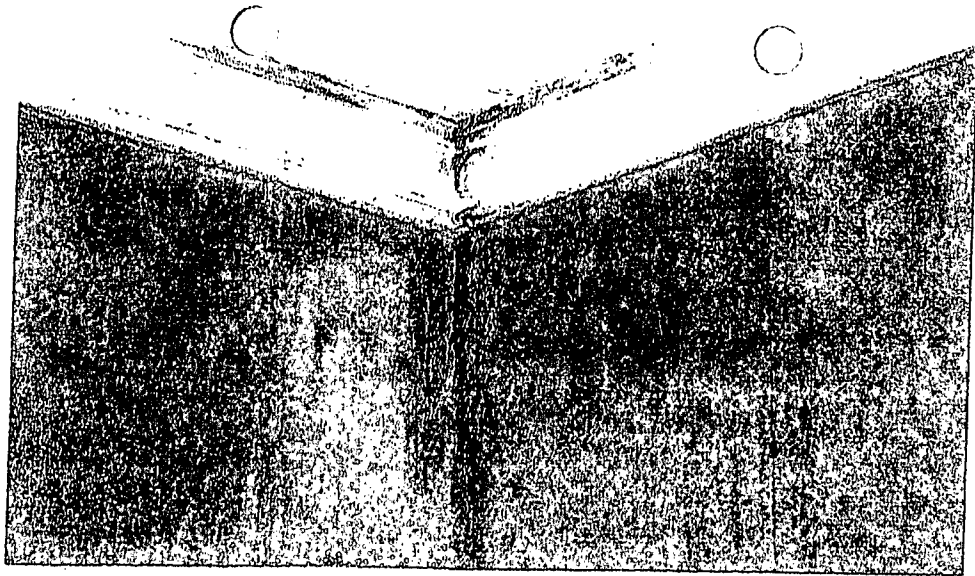
window before
Image_0053.jpg



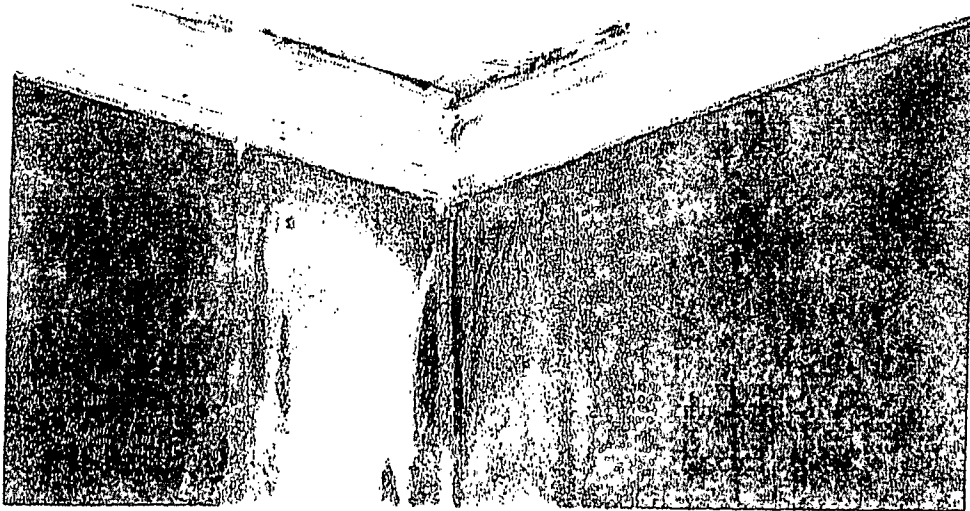
window foaming action
Image_0055.jpg



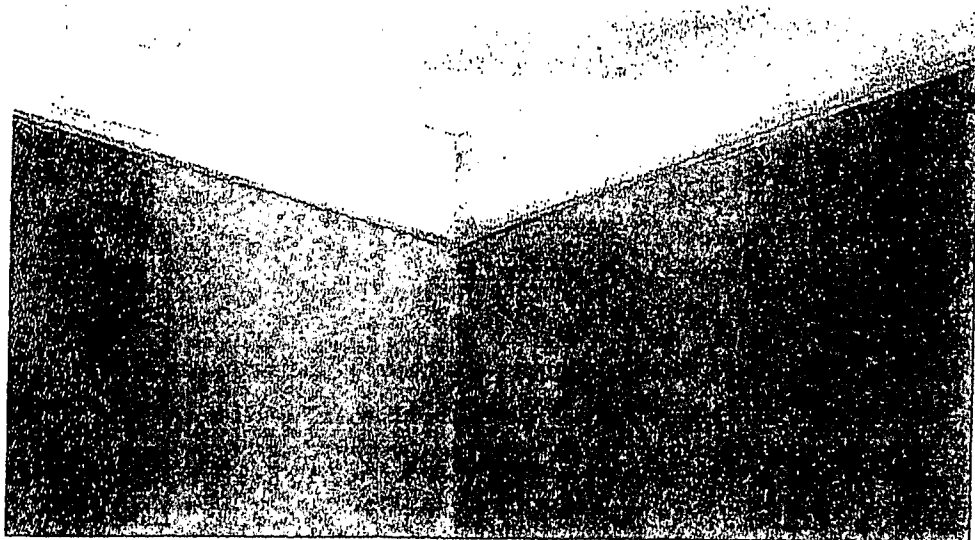
window after
Image_0058.jpg



ceiling before
01302006 (14).jpg

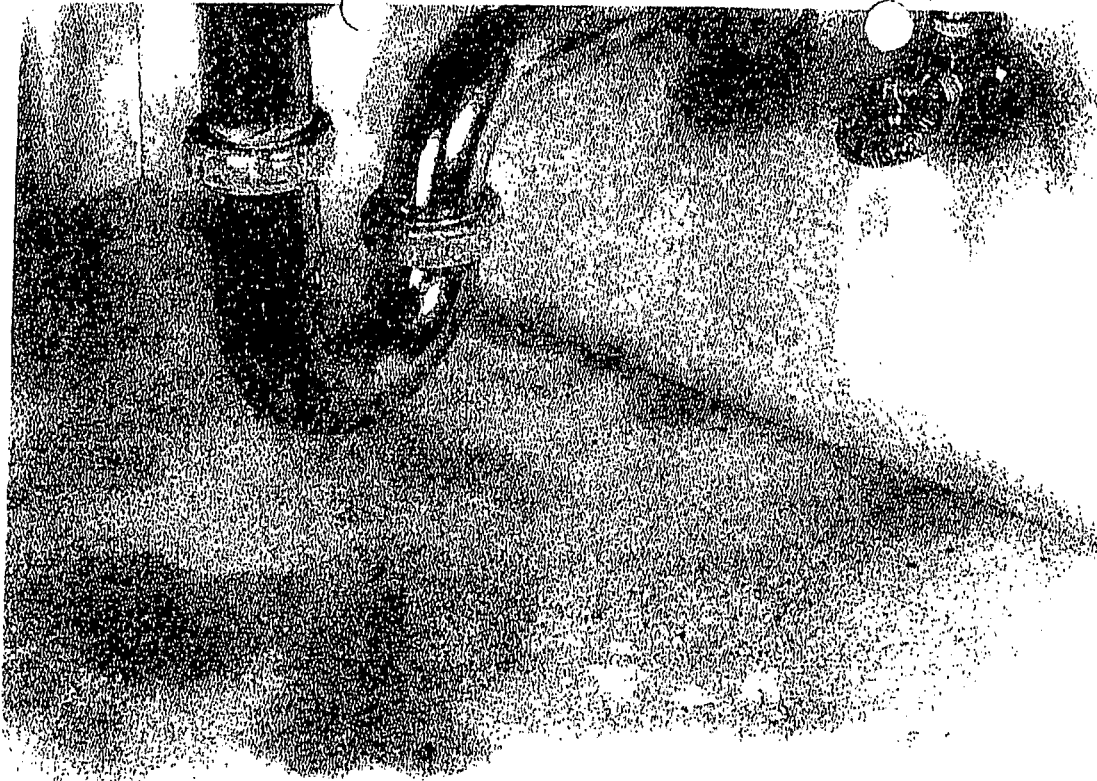


foaming action
01302006 (15).jpg

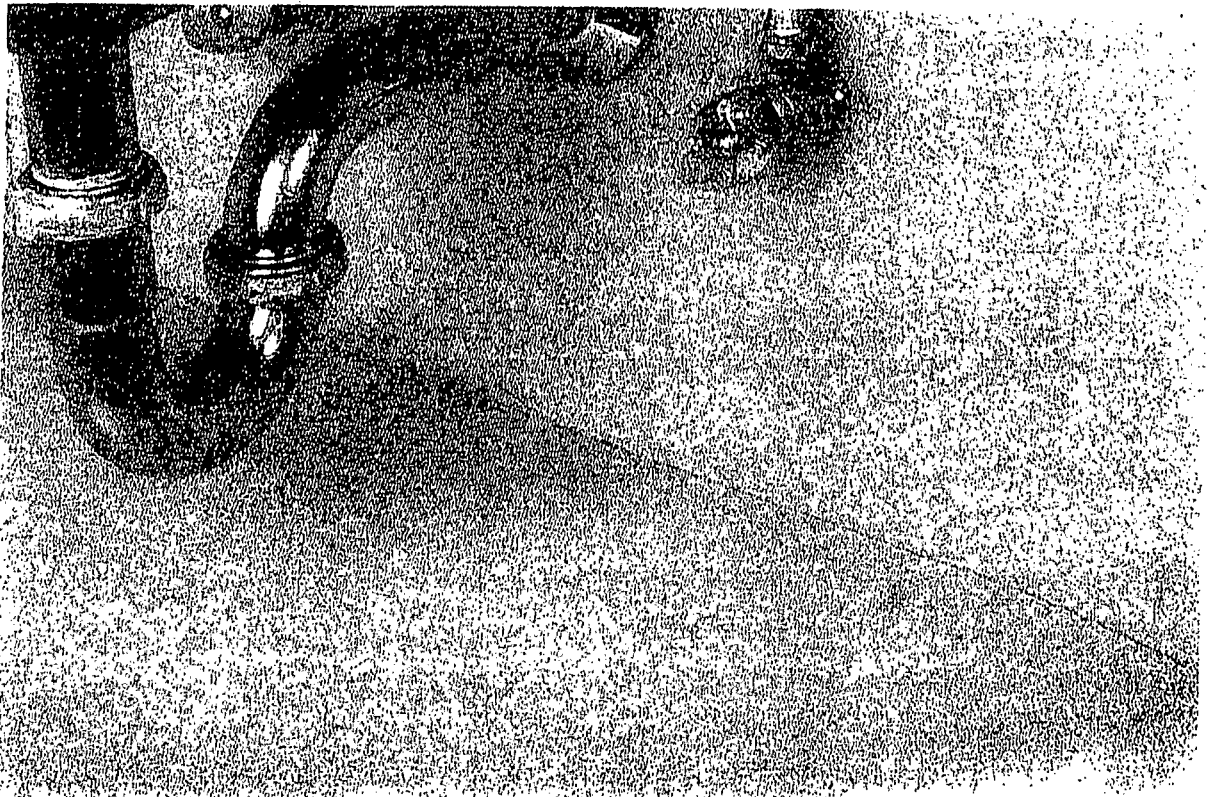


ceiling after
01302006 (16).jpg

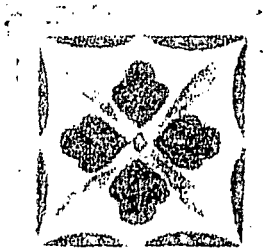
17 of 19



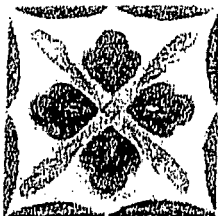
sink before
Image_0077.jpg



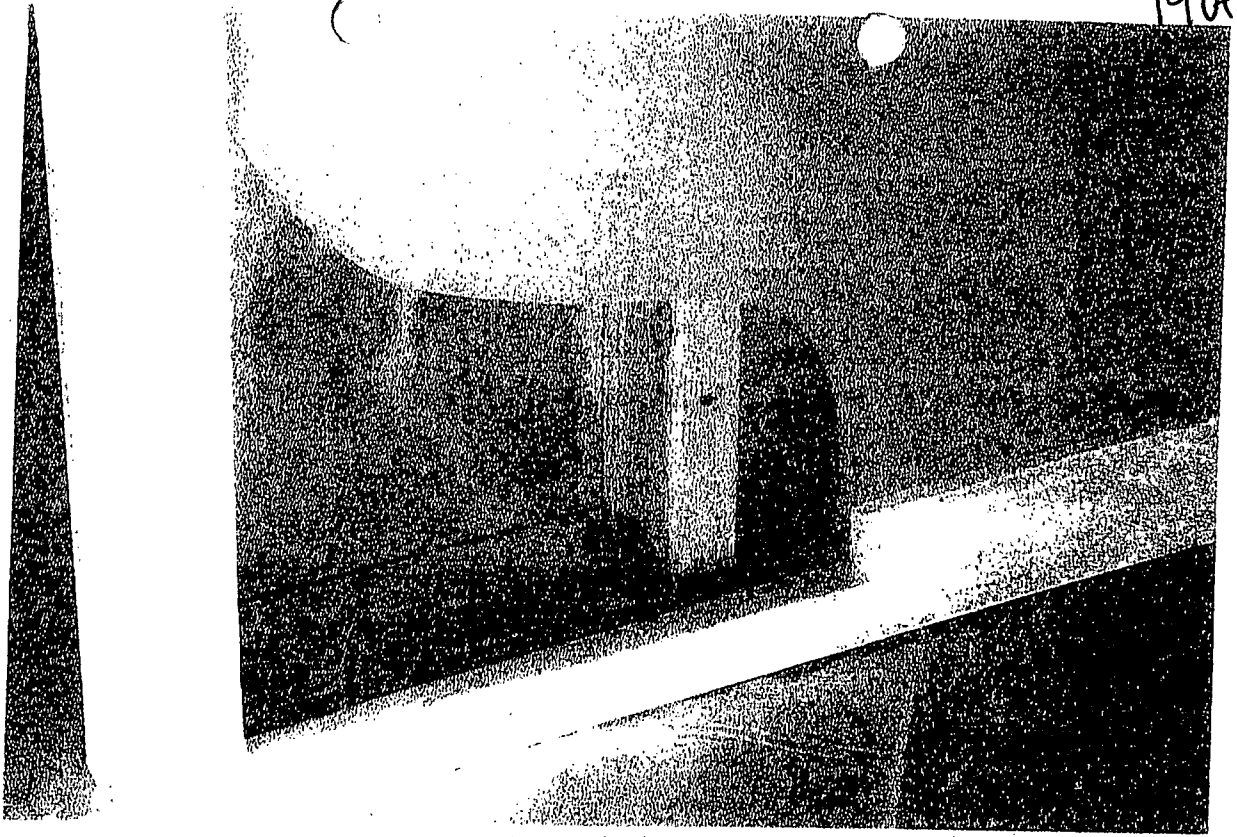
sink after
Image_0093.jpg



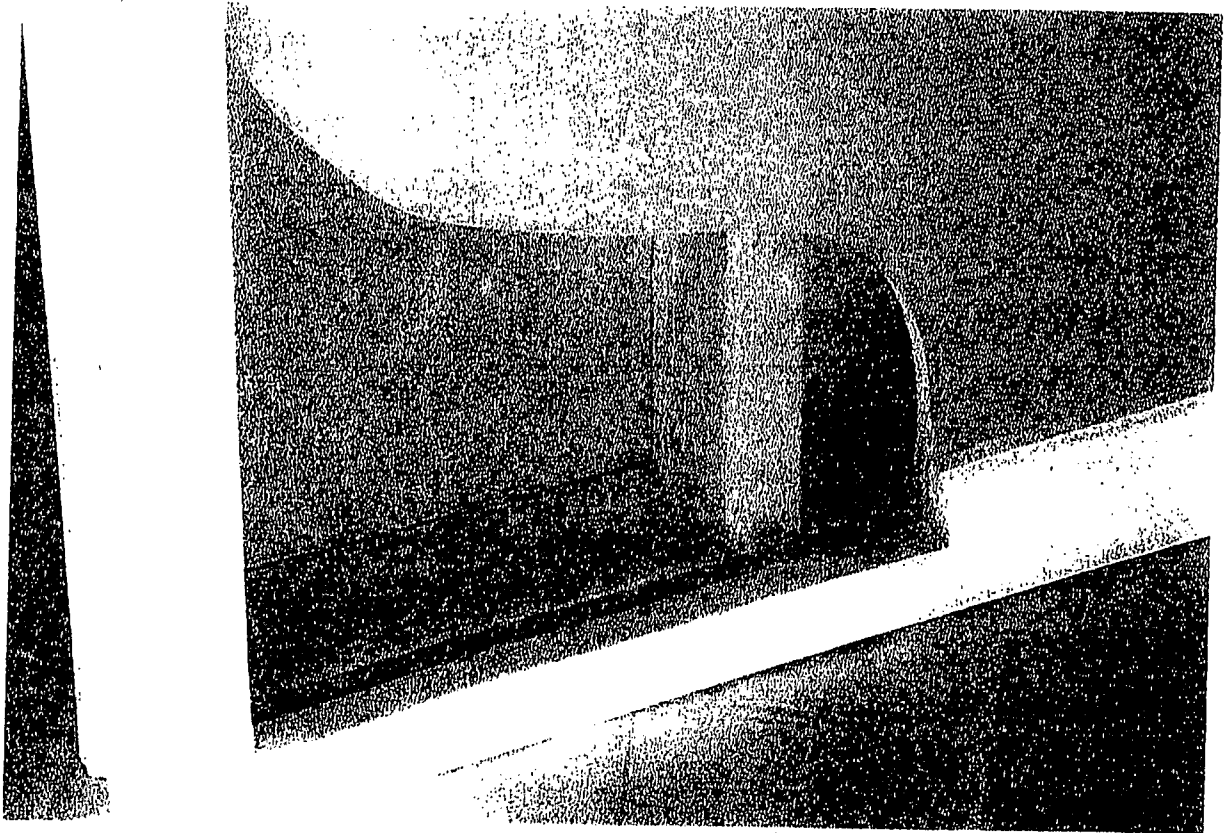
tile before
YE6K1240.jpg



tile after
YE6K1243.jpg



cutaway before
01302006 (18).jpg



cutaway after
YE6K1235.jpg