

75639-1

5/4/2004  
**ANTMASTER'S Sweet Gel Bait**

Page 184

**ACTIVE INGREDIENT:**  
Boric Acid ..... 5.26%  
**OTHER INGREDIENTS:** ..... 94.74%  
**TOTAL:** ..... 100.00%

**KEEP OUT OF THE REACH OF CHILDREN**

**CAUTION**

EPA Reg. No. 75639-1

EPA Est. No. 75639-GA-001

**BUG GUYS.COM, LLC**  
11877 Douglas Road, Suite 102, PMB 204  
Alpharetta, GA 30005  
www.bugguys.com

Net Weight: 1 ½ oz.

**PRECAUTIONARY STATEMENTS**

**HAZARDS TO HUMANS AND DOMESTIC ANIMALS**

**CAUTION:** Causes moderate eye irritation. Harmful if swallowed. Avoid contact with eyes or clothing. Wash thoroughly with soap and water after handling.

Avoid treating readily visible unfinished or porous surfaces as some watermarking may occur.  
Do not use in the edible product areas of food handling establishments, or other areas where food is commercially prepared or processed.  
Do not use in serving areas while food is exposed. Avoid contamination of feed and foodstuffs.

<b>FIRST AID</b>	
<b>If swallowed</b>	<ul style="list-style-type: none"> <li>• Call poison control center or doctor immediately for treatment advice.</li> <li>• Have person sip a glass of water if able to swallow.</li> <li>• Do not induce vomiting unless told to do so by the poison control center or doctor.</li> <li>• Do not give anything by mouth to an unconscious person.</li> </ul>
<b>If in eyes</b>	<ul style="list-style-type: none"> <li>• Hold eye open and rinse slowly and gently with water for 15-20 minutes. Remove contact lenses, if present, after the first 5 minutes, then continue rinsing eye.</li> <li>• Call a poison control center or doctor for treatment advice.</li> </ul>
<b>If on skin or clothing</b>	<ul style="list-style-type: none"> <li>• Take off contaminated clothing.</li> <li>• Rinse skin immediately with plenty of water for 15-20 minutes.</li> <li>• Call a poison control center or doctor for treatment advice.</li> </ul>
<b>HOT LINE NUMBER</b>	
Have the product container or label with you when calling a poison control center or doctor, or going for treatment. For emergency information call 1-800-222-1222.	

**STORAGE AND DISPOSAL**

Do not contaminate water, food, or feed by storage and disposal.  
**Pesticide Storage:** Store only in a dry place inaccessible to children and pets.  
**Container Disposal:** If empty: Do not reuse this container. Place in trash or offer for recycling if available. If partly filled: Call your local solid waste agency or 1-800-CLEANUP for disposal instructions. Never place unused product down any indoor or outdoor drain.

**DIRECTIONS FOR USE:**

It is a violation of Federal Law to use this product in a manner inconsistent with its labeling.

This product is specially designed for use in controlling sugar-feeding ants. Sugar-feeding ants are usually found in kitchens and bathrooms, and will often appear to be randomly searching for food or water. **ALL BAIT PRODUCTS WILL WORK BEST WHEN COMPETING SOURCES OF FOOD ARE SEALED UP AND PUT AWAY.**

**PRE-BAITING:** After locating foraging ants, present them with a ½ inch line of ANTMASTER'S Sweet Gel Bait. In most instances, the ants will quickly recruit more foragers, and in 10-20 minutes, should form a trail to where they are entering the room. Do not apply pesticides or chemicals near the pre-bait placement. Make a note of entry areas. Wipe up the pre-bait areas with soap and water to remove scent trails placed by the foraging ants.

**ACCEPTED**

MAY 4 2004

Under the Federal Insecticide, Fungicide, and Rodenticide Act, as amended, for the pesticide registered under 75639-1

**BAITING:**

**Inside:** After identifying the entry areas, bait the ants close to where they are entering the room. To maximize the amount of feeding surface, the bait placements should be made in THIN 1/8" lines, 2-3 inches long. Use 1-3 bait lines per ant entry point. Any bait remaining after 3 days should be removed with warm water and paper towel. Re-bait as needed. After a week of no ant activity all entry should be sealed as best as possible. \*Note: seal both inside and outside areas if accessible to prevent ants from entering the structure.

**Outside:** Walk around the outside of the structure and look for ant trails. Ant trails are usually found along the edge of the structure at soil level or trailing up the structure or landscaping. Attention should be given in trees and plants found in landscape areas because the primary food source for sweet-feeding ants is "honeydew", the by-product of plant-sucking insects. ANTMAS<sup>T</sup>ER'S Sweet Gel Bait is designed to closely mimic "honeydew". Controlling plant-sucking insects around a structure will reduce natural "honeydew". As a result, ANTMAS<sup>T</sup>ER'S Sweet Gel Bait will be an alternate food source for ants thus greatly increasing control of them through baiting. If sooty mold or plant-sucking insects, such as aphids, are found on plants, apply an EPA-approved product for controlling plant-sucking insects following label directions. After 3 days, place ANTMAS<sup>T</sup>ER'S Sweet Gel Bait in areas where ants are found. Bait placements should be made in THIN 1/8" lines, 2-3 inches long near foraging trails.

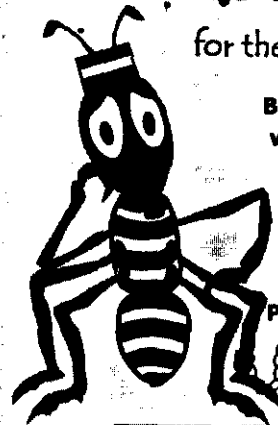
**NOTE:**

- ANTMAS<sup>T</sup>ER'S Sweet Gel Bait's thick, no-drip formula allows easy baiting that is away from counter surfaces, out of customers' sight, and in areas inaccessible to children and pets.
- ANTMAS<sup>T</sup>ER'S Sweet Gel Bait can be used in vertical or horizontal surfaces including, but not limited to, the edges and tops of cupboards, cabinets, along door and window frames, and corners where the wall and ceiling meet.
- Placing bait inside a 2-3 inch long section of a drinking straw can protect wooden surfaces from watermarking and allow for easier clean up after baiting on all surfaces. This will also extend the life of the bait by preventing moisture loss.
- **DO NOT USE ANY PESTICIDES OR HARSH CHEMICALS AROUND BAITING AREAS.**
- In order for baits to work effectively the ants must be allowed to return to the nest with the bait. \*Therefore, using pesticides or harsh chemicals may kill foraging ants returning to the nest with bait.
- Be aware that ant-feeding choices change regularly and at different times of the day. Results can be achieved anywhere from 24 hours or several weeks.
- To control future ant infestations you may bait in areas where past ant activity has been observed. Applying bait outside before ants become a problem will help keep your home or structure ant free throughout the season.
- When storing the bait syringes between uses keep in a cool unrefrigerated area. Avoid excessive Heat or Cold. The consistency of the bait may change due to temperature. Test a small amount before placement. The consistency will not affect ant acceptance but it may cause running or drips.

3 8 4

# AntMasters™ *Sweet* Gel Bait

for the control of sweet feeding ants



BugGuys.com LLC • Alpharetta GA 30005

www.BugGuys.com • 770-886-1980

AntMasters@BugGuys.com

EPA Est. No. 75639-GA-001

EPA Reg. No. 75639-1

SEE ATTACHED LABEL FOR FULL  
PRECAUTIONS AND DIRECTIONS FOR USE

KEEP OUT OF REACH OF CHILDREN  
CAUTION

Net Weight: 1 ½ oz

**ACTIVE INGREDIENT:**

Boric Acid ..... 5.26 %

**OTHER INGREDIENTS**..... 94.74 %

**TOTAL:** ..... 100.00 %

4 74

**ACCEPTED**  
MAY -4 2004  
Under the Federal Insecticide,  
Fungicide, and Rodenticide Act,  
as amended, for the pesticide  
registered under  
EPA Reg. No. 56397