



UNITED STATES ENVIRONMENTAL PROTECTION AGENCY  
WASHINGTON, DC 20460

OFFICE OF CHEMICAL SAFETY  
AND POLLUTION PREVENTION

July 29, 2016

David Swain  
Agent for Virox Technologies Inc.  
2770 Coventry Road  
Oakville, Ontario L6H 6R1 Canada

Subject: Notification per PRN 98-10 – Add alternate brand names; add marketing statements; correct typos  
Product Name: ACCEL™ (Concentrate) Disinfectant Cleaner  
EPA Registration Number: 74559-4  
Application Date: April 18, 2016  
Decision Number: 516563

Dear Mr. Swain:

The Agency is in receipt of your Application for Pesticide Notification under Pesticide Registration Notice (PRN) 98-10 for the above referenced product. The Antimicrobials Division (AD) has conducted a review of this request for its applicability under PRN 98-10 and finds that the action requested falls within the scope of PRN 98-10.

The label submitted with the application has been stamped “Notification” and will be placed in our records.

Should you wish to add/retain a reference to the company’s website on your label, then please be aware that the website becomes labeling under the Federal Insecticide Fungicide and Rodenticide Act and is subject to review by the Agency. If the website is false or misleading, the product would be misbranded and unlawful to sell or distribute under FIFRA section 12(a)(1)(E). 40 CFR 156.10(a)(5) list examples of statements EPA may consider false or misleading. In addition, regardless of whether a website is referenced on your product’s label, claims made on the website may not substantially differ from those claims approved through the registration process. Therefore, should the Agency find or if it is brought to our attention that a website contains false or misleading statements or claims substantially differing from the EPA approved registration, the website will be referred to the EPA’s Office of Enforcement and Compliance.

The following alternate brand names have been added to the product record:

- REScUE Concentrate One Step Disinfectant Cleaner & Deodorizer
- INTERVention Farm Animal Care Disinfectant Cleaner & Deodorizer

Page 2 of 2  
EPA Reg. No. 74559-4  
Decision No. 516563

If you have any questions, you may contact Zebora Johnson at (703) 308-7080 or via email at [johnson.zebora@epa.gov](mailto:johnson.zebora@epa.gov).

Sincerely,

A handwritten signature in black ink, appearing to read "Julie Chao". The signature is fluid and cursive, with the first name "Julie" being more prominent and the last name "Chao" written in a smaller, more connected script.

Julie Chao, Product Manager 33  
Regulatory Management Branch 1  
Antimicrobials Division (7510P)  
Office of Pesticide Programs

Enclosure: Accepted Label

{Note to Agency: Text appearing in [ brackets ] or ( parenthesis ) is done to show interchangeable or optional text. Any language which appears between { braces } and is italicized is for administrative purposes only and will NOT appear on final printed label. Variables such as CAPITALIZATION, plurals or singular, bold and italics are optional unless specified in 40 CFR. Listed uses and use sites can be used partially or in their entirety. Underlined text is new. Strike-through text means it has been removed.}

## ACCEL™ (CONCENTRATE) DISINFECTANT CLEANER

{Alternate Brand Names: VIROcide, PREempt Concentrate, PEROXcide Concentrate, **REScue Concentrate One Step Disinfectant Cleaner & Deodorizer**, INTERvention Farm Animal Care Disinfectant Cleaner & Deodorizer}



PEROXigard  
REScue

VIROcide  
PEROXiwipes

PREempt  
PREvail

PEROXcide  
PREvention™

OPTIM  
INTERvention®

USA PATENT #: 6,803,057™  
™UNDER LICENSE BY VIROX TECHNOLOGIES INC.

### (ONE STEP) DISINFECTANT CLEANER (AND DEODORANT)

## CONCENTRATE



(ALL-IN-ONE) (MULTI-SURFACE) (ANIMAL PREMISE) ((ONE-STEP) DISINFECTANT)  
(SANITIZER) • (CLEANER) • (\*VIRUCIDAL) • (FUNGICIDAL) • BACTERICIDAL • (MILDEWCIDAL)  
• (MILDEWSTATIC) • DEODORIZER (ODOR COUNTERACTANT) (ODOR NEUTRALIZER)  
• NON-DULLING TO FLOORS (FLOOR FINISHES) • CONCENTRATE • READY-TO-DISPENSE (RTD)  
(CLEANS, DISINFECTS & DEODORIZES) (SANITIZES)  
(MEETS OSHA BLOODBORNE PATHOGEN STANDARD FOR \*HBV & \*HIV)

(Restroom) (&) (Bathroom) (Disinfectant Cleaner) (Hospital Disinfectant Cleaner) (Multi-Surface Disinfectant Cleaner)  
(Cleans, Deodorizes and Brightens in One Step) (Cleans Grout)  
(Cleans hard, non-porous water washable surfaces!) (Degreaser)  
(Use Daily to Prevent the Buildup of Dirt and Grime.)(Sanitizing)

(Fragrance Free Formula) (Unscented) (Outdoor Fresh)  
(Fresh [Lemon] [Spring Fresh] [Citrus] Scent)

For (Hospital,) (Health Care,) (Commercial,) (Industrial) & (Institutional) Use (Only)

[For] Residential Use

[For] Home Use

For Homecare Use

For Home (and) [Healthcare] Use

For Office Use

For Veterinary Use

For Aquaculture Use

### NOTIFICATION

74559-4

The applicant has certified that no changes, other than those reported to the Agency have been made to the labeling. The Agency acknowledges this notification by letter dated:

7/29/2016

Page 1 of 39

EPA Reg. No. 74559-4

Revision Date: 04/11/16

*{Note to Agency: Text appearing in [ brackets ] or ( parenthesis ) is done to show interchangeable or optional text. Any language which appears between { braces } and is italicized is for administrative purposes only and will NOT appear on final printed label. Variables such as CAPITALIZATION, plurals or singular, bold and italics are optional unless specified in 40 CFR. Listed uses and use sites can be used partially or in their entirety. Underlined text is new. Strike-through text means it has been removed.}*

For Barn Use

For Farm Use

**For Dental [Clinic] Use**

**ACTIVE INGREDIENT:**

Hydrogen Peroxide .....4.25%

**INERT (OTHER) INGREDIENTS:**.....95.75%

**TOTAL:** .....100.00%

**KEEP OUT OF REACH OF CHILDREN  
CAUTION**

See additional precautionary statements on back (side) (left) (right) (panel) (of) (label) (below).

[See reference sheet (enclosed in each case) for (a complete list of pathogenic organisms) (additional features, claims, direction for use) (claimed for this product) (eliminated by this product).]

*{ NOTE To Reviewer: Due to space constraints, the Container Label may not include all of the organism claims and marketing claims approved on the Master Label. Therefore, a separate reference sheet containing additional organism claims and marketing claims is added at the end under title "Reference Sheet". This reference sheet may be inserted into the shipping case and/or distributed separately or be available at the point of sale. When a separate reference sheet is used, it will contain the instructions to the user to see the product/container label for use directions, precautions, etc. }*

EPA Reg. No. 74559-4

EPA Est. No. 74559-CAN-1

**Net Contents:** (Expressed as gallons and fluid ounces)

(Insert package contents here)

*{Note to Agency: Text appearing in [ brackets ] or ( parenthesis ) is done to show interchangeable or optional text. Any language which appears between { braces } and is italicized is for administrative purposes only and will NOT appear on final printed label. Variables such as CAPITALIZATION, plurals or singular, bold and italics are optional unless specified in 40 CFR. Listed uses and use sites can be used partially or in their entirety. Underlined text is new. Strike-through text means it has been removed.}*

**{MARKETING CLAIMS - commercial}**: *{Note to EPA - This text will only appear on the appropriate container.}*

- Broad-spectrum [Multipurpose] [Multi-surface] [Bactericidal] [\*Virucidal] [Fungicidal] [Mildewcidal] [Sanitizer] [Disinfectant] [activity]
- Chlorine free [No] [chlorine] [bleach]
- Destroys bacteria, fungi, \*viruses on hard non-porous surfaces found in [swine], [poultry], [dairy], [equine] [farms] and [animal holding and research facilities]
- Destroys bacteria, fungi, \*viruses on hard non-porous surfaces found in [shelters] [and] [or] [vet] [clinics] [practices]
- Dual action formulation providing broad spectrum activity against; \*viruses, bacteria, fungi
- Gluteraldehyde free [No Gluteraldehydes]
- Intense cleaning action
- Long shelf life
- Non-tainting, leaves no unsightly residues
- Phenol free [No phenols]
- Powerful odor control [odor neutralizer] [deodorizer] [odor-counteractant] formula [on hard non-porous surfaces]
- Quaternary Ammonium Compound Free [No Quaternary Ammonium Compounds]
- Safe for most hard surfaces, [no bleach (or chlorine) stains]
- Safe to use on floors, equipment, cages and kennels, when used as directed
- Step-saving, Labor-saving, Time-saving, Cost-saving formula
- To be used in sanitizing and disinfecting of hard, non-porous non-food [contact] surfaces and non-critical equipment
- Versatile, Fast-acting, Convenient formula
- [Effective] farmyard disinfectant
- Effective [shelter] [and] [or] [vet] [clinics] [practices] disinfectant
- Effective odor control
- For high risk, high contamination areas
- Remove [the most common]\*\*  
{Note: the sentence above will be used with this claim qualified}: \*\* This product removes the following [non-living] allergens: [cat dander], [cockroach matter], [cockroach debris], [cockroach particles], [dog dander] [dust mite debris], [pet dander], [pollen particles]

**{MARKETING CLAIMS - Residential}**: *{Note to EPA - This text will only appear on the appropriate container.}*

- An effective One-step sanitizer-cleaner for use on hard non-food contact surfaces
- [A heavy duty disinfectant cleaner that] cleans, disinfects and deodorizes in one labor saving step
- Cleans [and disinfects] non-food, hard, non-porous surfaces [all over the house] [kitchens<sup>†</sup> and bathrooms]
- Cleans [fast] [in kitchen<sup>†</sup>] [and bathrooms]
- Cleans [removes] [eliminates] [destroys] stains
- Cleans [removes] [eliminates] [destroys] baked-on food
- Cleans [removes] [eliminates] [destroys] burnt-on food
- Cleans [tough] grease and grime
- Cleans [tough] soap scum
- Cleans without bleaching
- Contains no [abrasives] [bleach]
- Cuts [cleans] kitchen<sup>†</sup> [and] [bathroom] [and] household grime and soils [fast]
- Easy to use – just spray [and] [walk away]
- Effective – Cleans soap scum

*{Note to Agency: Text appearing in [ brackets ] or ( parenthesis ) is done to show interchangeable or optional text. Any language which appears between { braces } and is italicized is for administrative purposes only and will NOT appear on final printed label. Variables such as CAPITALIZATION, plurals or singular, bold and italics are optional unless specified in 40 CFR. Listed uses and use sites can be used partially or in their entirety. Underlined text is new. Strike-through text means it has been removed.}*

- Fast / Easy / Effective: Use [in] [on] [the] *{insert one or more residential/household use sites listed below (List 3)}*
- For non-scratch cleaning of showers and tubs, shower doors and curtains±, fixtures and toilet bowls. {Note: the sentence above will be used with this claim qualifier}: ± hard, nonporous surfaces of
- For multiple cleaning tasks
- For use [in] [Household], [Homecare], [Daycare] settings [as a multi-purpose disinfectant cleaner]
- Formulated with patented hydrogen peroxide technology<sup>†</sup>
- For everyday use [in kitchens<sup>‡</sup> and] [bathrooms] [restrooms]
- For a cleaner, fresher household
- For everyday use
- For any non-food [contact] hard, non-porous surface where germs are a concern.
- For use [in] [on] [the] *{insert one or more residential/household use sites from the list below (List 3)}* [as a multi-purpose disinfectant cleaner]
- Good for most indoor cleaning tasks.
- Is effective yet economical
- Keeps day care centers clean
- Leaves [a fresh, clean scent] [no [dull] [sticky] residue].
- Leaves your [home] [house] [washroom] [restroom] smelling clean with a clean fresh scent
- Leaves your kitchen<sup>‡</sup> and bathroom with a fresh, clean scent
- [No rinse required.] No streaking [or filming]
- Quickly [eliminates] [removes] [food] odors
- Removes [the most common] [household] allergens [around your home] [around your kitchen<sup>‡</sup>] [around your bathroom] [on your floors]<sup>††</sup>  
*{Note: the sentence above will be used with this claim qualifier}: <sup>††</sup>This product removes the following [non-living] allergens: [cat dander], [cockroach matter], [cockroach debris], [cockroach particles], [dog dander], [dust mite debris], [pet dander], [pollen particles]*
- Use this product throughout your home to clean [beverage stains] [dirt] [food stains] [grime] [pet stains] [soap scum]
- Use only one product to get a streak-free shine plus antimicrobial action
- Will not leave grit or soap scum

*{Note: the word Kitchen<sup>‡</sup> will be used with this claim qualifier}: <sup>‡</sup> Non-food contact surfaces of*

**{ Marketing Claims }**

- Chlorine Bleach Alternative lifts dirt and disinfects
- Cleaning and **Disinfecting**/**Disinfection**
- Cleans - Disinfects - Deodorizes
- Deep Hydrogen Peroxide bubbling clean
- Disinfectant: Multi-Surface
- [[Home] Healthcare], [Office] and [Home]
- [Home] Healthcare [Use]
- [Hospital] [Disinfectant]
- Home [Use]
- Institution [Use]
- Institutional Disinfectant
- Institutional and Healthcare Disinfectant
- Makes 16 (128) (256) quarts (of Ready to Use) (RTU) disinfectant (sanitizer) (cleaner)
- Multi-Surface: [[Home] Healthcare], [Office] and [Home]

*{Note to Agency: Text appearing in [ brackets ] or ( parenthesis ) is done to show interchangeable or optional text. Any language which appears between { braces } and is italicized is for administrative purposes only and will NOT appear on final printed label. Variables such as CAPITALIZATION, plurals or singular, bold and italics are optional unless specified in 40 CFR. Listed uses and use sites can be used partially or in their entirety. Underlined text is new. Strike-through text means it has been removed.}*

- Office [Use]
- Removes dirt and kills germs
- [Uses] Patented Hydrogen peroxide formula for [powerful] cleaning
- With active oxygen]
- With the power of oxygen

### **{Marketing claims-efficacy}**

- A disinfecting cleaner for use in {insert residential use sites from the list below (List 3)}
- Cleans\*\*\* and disinfects non-food [contact] hard nonporous surfaces (all over the house) (kitchens‡ and (bathrooms) (restrooms).
- Controls (Eliminates) (kitchen‡) odor-causing bacteria
- Disinfects (Deodorizes) (and Sanitizes) as it cleans\*\*\*
- Disinfects (Deodorizes) hard, non-porous surfaces
- Disinfects as it cleans\*\*\*
- Disinfects - kills germs for a deep down clean
- Disinfects (and) kills (>) (99.9%) (99.99%) of (germs) (and) (bacteria) (with) (Product name ) (with) (Hydrogen Peroxide)
- Eliminates bacteria from (kitchen‡) (bathroom) (washroom) (restroom) surfaces
- Eliminates (kills) odor-causing bacteria
- Eliminates odors [caused by bacteria]
- Kills antibiotic resistant bacteria\*\*
- Kills [99.9%] [99.99%] of bacteria
- Kills [99.9%] [99.99%] of bacteria commonly found in the (kitchen‡) (and) (bathroom)
- Kills [99.9%] [99.99%] of germs
- Kills germs while it cleans\*\*\*
- Kills [99.9%] [99.99%] of household bacteria
- Kills (household) bacteria (and sanitizes)
- Kills kitchen‡ and bathroom bacteria
- Kills odor-causing bacteria
- Kills odor-causing (household) bacteria
- Kills (Destroys) (Eliminates) germs
- Kills (Destroys) (Eliminates) germs while it cleans\*\*\*
- Kills (Eliminates) odor-causing bacteria in the (kitchen‡) (bathroom) (restroom)
- Kills (kitchen‡) (bathroom) (household) germs
- Kills bacteria commonly found in kitchens‡ [in 5(five) minutes] at 1:16 dilution
- Kills bacteria and viruses\* on hard, non-porous (kitchen‡) (bathroom) (restroom) (household) surfaces in 5(five) minutes at 1:16 dilution
- **\*Parvocidal**
- This product (OR Product name) Disinfects [Deodorizes] [hard, non-porous surfaces] as it cleans\*\*\*.

{\*Virucidal}

Kills Flu Virus\* on hard, nonporous surfaces  
Kills (99.9%) of viruses\* (with this product (OR product name))



*{Note to Agency: Text appearing in [ brackets ] or ( parenthesis ) is done to show interchangeable or optional text. Any language which appears between { braces } and is italicized is for administrative purposes only and will NOT appear on final printed label. Variables such as CAPITALIZATION, plurals or singular, bold and italics are optional unless specified in 40 CFR. Listed uses and use sites can be used partially or in their entirety. Underlined text is new. Strike-through text means it has been removed.}*

*{ Mold and Mildew}*

Controls and prevents the growth of mold and mildew  
Kills the growth of mold and mildew

*{Disinfection claim qualifier}*

**\*\*Kills** (99.9% of) Methicillin Resistant *Staphylococcus aureus* (MRSA), [Vancomycin Resistant *Enterococcus faecium* (VRE)], [Community Associated Methicillin Resistant *Staphylococcus aureus* (CA-MRSA)], [Methicillin Resistant *Staphylococcus epidermidis* (MRSE)] , [Penicillin Resistant *Streptococcus pneumoniae* (PRSP)] , [Extended Spectrum Beta-lactamase resistant *Escherichia coli* (ESBL)], [and] [Carbapenem-resistant *Klebsiella pneumoniae* (KPC)]

*{Note: the word Kitchen~~z~~ will be used with this claim qualifier}: ‡ Non-food contact surfaces of*

**{MARKETING CLAIMS}: {Note to reviewer - This text will only appear on the appropriate container.}**

**SOLUTIONS CENTER™ DISPENSING SYSTEMS<sup>#</sup>** (64 oz. (2 qt.) containers) - For use with (Diversey) (SOLUTIONS CENTER™) Brand Dispensing Equipment. Dispense with cold water. Eliminates Mixing. The Accurate Solution To Cleaner Dilution. Disinfectant Cleaning With The Convenience Of (SOLUTIONS CENTER™). (SOLUTIONS CENTER™) (This packaging offers) Reduced Exposure To Concentrate Due To Closed Transfer System. Solutions To Go!

**J-FILL™ DISPENSING SYSTEMS<sup>#</sup>** (84.5 oz. (2.5 L) containers) - For use with (Diversey) (J-FILL™) Brand Dispensing Equipment. Dispense with cold water. Eliminates Mixing. The Accurate Solution To Cleaner Dilution. Disinfectant Cleaning With The Convenience Of J-FILL™. J-FILL™ ((This packaging offers) Reduced (Reduces) Exposure To Concentrate Due To Closed Transfer System. Solutions To Go!

**RTD™ DISPENSING SYSTEMS<sup>#</sup>** (1.5 L & 5 L containers) - RTD. Very Simple. Very Smart. Out of the box. Ready-To-Dispense. Dispense with cold water. Provides accuracy. No chemical connections, sealed bottle. Proven dilution control concentrate.

**COMMAND CENTER™ DISPENSING SYSTEMS<sup>#</sup>** (1.5 gal. containers) - For use with (Diversey) (BUTCHER™) (COMMAND CENTER™) Brand Dispensing Equipment. Dispense with cold water. Eliminates Mixing. The Accurate Solution To Cleaner Dilution. COMMAND CENTER™ (This packaging offers) Reduced (Reduces) Exposure To Concentrate Due To Closed Transfer System.

**Smart DOSE™ DISPENSING SYSTEMS<sup>#</sup>** (1.5 L & 5 L containers) - RTD. Very Simple. Very Smart. Out of the box. Ready-To-Dispense. Provides accuracy. No chemical connections, sealed bottle. Proven dilution control concentrate.

Dilution control and dispensing technology utilized under license from Diversey Care, a division of Sealed Air Corporation

**(FEATURES, CLAIMS & USES:)**

**(General Uses ) {Option 1}**

For Use in Health Care, Dental, Medical, Veterinary Clinics, Laboratories and Hospitals



*{Note to Agency: Text appearing in [ brackets ] or ( parenthesis ) is done to show interchangeable or optional text. Any language which appears between { braces } and is italicized is for administrative purposes only and will NOT appear on final printed label. Variables such as CAPITALIZATION, plurals or singular, bold and italics are optional unless specified in 40 CFR. Listed uses and use sites can be used partially or in their entirety. Underlined text is new. Strike-through text means it has been removed.}*

This product is a one-step disinfectant cleaner and deodorant designed for general cleaning and disinfecting of hard, non-porous environmental surfaces. It cleans quickly by removing dirt, grime, mold, mildew, body oils and other common soils found in hospitals, nursing homes, schools and colleges, medical and dental offices.

This product is designed for use on hard, non-porous environmental surfaces: vinyl, painted surfaces, plastic, glass, mirrors, glazed ceramic, glazed porcelain, chrome, stainless steel, aluminum, laminated surfaces and baked enamel surfaces associated with floors, walls, ceilings, tables, chairs, countertops, telephones, fixtures, athletic equipment, exercise equipment, glazed tile, toilets, urinals, sinks, sink basins, faucets, tubs, shower rooms and locker room areas – any hard non-porous washable (non-food contact) surface where disinfection is required. Do not use on glasses, dishes and utensils.

This product cleans by removing dirt, grime, mold, mildew, blood, urine, fecal matter and other common soils found in animal housing facilities, livestock, swine or poultry facilities, grooming facilities, farms, kennels, pet stores, veterinary clinics, laboratories or other small animal facilities. It also reduces odor-causing bacteria leaving surfaces smelling clean and fresh.

This product cleans, disinfects and deodorizes hard, non-porous environmental surfaces in one step. Its non-abrasive formula is designed for use on hard, non-porous surfaces: plated or stainless steel, aluminum, chrome, glazed porcelain, glazed tile, sealed concrete, laminated surfaces associated with floors, walls, non-food contact countertops, cages, kennels, animal equipment found in barns, pens and stalls of animal housing facilities.

#### ***(General Uses) {Option 2}***

This product is a one-step (hospital-use) germicidal (disinfectant) cleaner and deodorant (odor-counteractant) (odor neutralizer) designed for general cleaning, (and) disinfecting, (deodorizing) (and (killing) (controlling) mold and mildew on) (of) hard, non-porous environmental surfaces. It cleans quickly by removing dirt, grime, mold, mildew, body oils and other common soils found in hospitals, nursing homes, (acute) (and) (long-term) care facilities, office buildings, schools and colleges (universities), (day care centers), (medical) (dental) offices, funeral homes, transportation facilities, train (depots) (stations), bus (depots) (stations), airports, cruise ships, casinos, correctional facilities, athletic facilities, playgrounds,

locker rooms, health clubs, exercise equipment, barber/beauty (salons) (shops), veterinary clinics, pet shops, (equine farms), animal life science laboratories, hotels, motels, public areas and restrooms, foodservice establishments (restaurants) and federally inspected meat and poultry establishments (food [processing] [beverage] [brewing] plants), (dairies) (dairy farms), (warehouses) ([industrial (and)] (commercial) buildings only on non-food contact surfaces.

It is designed for use on (Use daily on) (the following) (hard, non-porous environmental (inanimate) surfaces): vinyl, painted surfaces, plastic (surfaces), glass, mirrors, glazed ceramic, glazed porcelain, chrome, stainless steel, aluminum, laminated surfaces and baked enamel surfaces associated with floors, walls, ceilings, tables, chairs, countertops, telephones, fixtures, athletic equipment, exercise equipment, glazed tile, toilets, urinals, sinks, sink basins, faucets, tubs, shower rooms and locker room areas – any hard, non-porous washable (non-food contact) surface where disinfection is required. This product's non-dulling formula eliminates the time and labor normally required for rinsing. Do not use on glasses, dishes and utensils.

#### ***((Bathroom) (Restroom) (Bowl) Disinfectant Cleaner:)***

This product is a (concentrated) (bowl and) (bathroom) (restroom) cleaner which cleans, disinfects and deodorizes in one easy step. It cleans, disinfects and deodorizes mirrors, glass, toilet bowls, urinals, rims, sinks, sink basins, faucets, tubs, glazed tiles, glazed ceramic, glazed porcelain, chrome, stainless steel, and all hard non-porous, washable surfaces found in the bathroom (restroom) (in the presence of organic soil).

This product reduces odor-causing bacteria leaving (bathrooms) (restrooms) smelling clean and fresh. Use where odors are a problem. It cleans, disinfects and deodorizes surfaces by killing odor-causing microorganisms. Its non-abrasive formula is designed for use (Use it daily) on ([hard, non-porous environmental] (bathroom) (restroom) surfaces): mirrors, glazed ceramic (bathroom) (restroom) tile, glazed porcelain, chrome, stainless steel and plastic surfaces associated with floors, walls, fixtures, toilets, urinals, sinks, shower rooms and locker rooms.

*{Note to Agency: Text appearing in [ brackets ] or ( parenthesis ) is done to show interchangeable or optional text. Any language which appears between { braces } and is italicized is for administrative purposes only and will NOT appear on final printed label. Variables such as CAPITALIZATION, plurals or singular, bold and italics are optional unless specified in 40 CFR. Listed uses and use sites can be used partially or in their entirety. Underlined text is new. Strike-through text means it has been removed.}*

This product cleans, disinfects and deodorizes surfaces by killing odor-causing microorganisms and (killing) (controlling) mold and mildew. Its non-abrasive formula is designed for use on (restroom surfaces:) glazed ceramic (restroom) tile, glazed porcelain, chrome, stainless steel and plastic surfaces associated with floors, walls, fixtures, toilets, urinals, sinks, shower rooms and locker rooms.

***(Hospitals/Health Care Facilities:)***

This product is a one-step (hospital-use) germicidal (disinfectant) cleaner and deodorant (odor-counteractant) (odor neutralizer) designed for general cleaning, (and) disinfecting, (deodorizing) (and controlling mold and mildew on) (of) hard, non-porous environmental surfaces. This product cleans quickly by removing dirt, grime, mold, mildew, food residue, body

oils, dead skin, blood and other organic matter commonly found in hospitals (acute) (and) (long-term) care facilities (and) (in health care facilities) (on medical surfaces). It (also) reduces odor-causing bacteria, leaving (restroom) surfaces smelling clean and fresh. Use where odors are a problem.

This product cleans, disinfects and deodorizes (hard, non-porous environmental hospital (medical) surfaces) in one step (with no rinsing required). Its non-abrasive formula is designed for use on (Use daily on) (the following) hard, non-porous environmental surfaces: vinyl, painted surfaces, plastic (surfaces), glazed ceramic, glazed porcelain, chrome, stainless steel, laminated surfaces and baked enamel surfaces associated with floors, walls, ceilings, tables, chairs, non-food contact countertops, telephones, fixtures, glazed tile, toilets, urinals, sinks found in (health care facilities [hospitals,]) patient rooms, operating rooms, ICU areas, shower rooms, and locker rooms. (It can also be used to pre-clean and disinfect hospital items: wheelchairs, [hospital] [patient] bed rails and linings, wash basins, bed pans, medical equipment surfaces) - any washable non-food contact surface (where disinfection is required). Do not use on glasses, dishes and utensils.

***(Animal Housing Facilities:){Option 1}***

This product cleans by removing dirt, grime, mold, mildew, blood, urine, fecal matter and other common soils found in animal housing facilities, [livestock], [swine] or [poultry] [facilities], [grooming facilities], [farms], [kennels], [pet stores], [veterinary] [clinics] [and/or] [practices], [laboratories] or [other small animal facilities]. It (also) reduces odor-causing bacteria leaving surfaces smelling clean and fresh.

This product cleans, disinfects and deodorizes (hard, non-porous environmental surfaces) in one step. Its non-abrasive formula is designed for use on (Use daily on) (Use daily to clean and disinfect) hard, non-porous surfaces: plated or stainless steel, aluminum, chrome, glazed porcelain, glazed tile, sealed concrete, laminated surfaces (associated with [floors], [walls], [non-food contact countertops], [cages], [kennels], [animal equipment]) found in ([barns], [pens] and [stalls]) animal housing facilities.

***(Animal Housing Facilities:){Option 2}***

This product is designed for use as a [one-step] cleaner, disinfectant, [sanitizer] on [hard, non-porous] surfaces of [vehicles], [trucks], [trailers], [carts], [animal crates], [grooming equipment], [handling equipment], [buckets], [brushes], [tables], [dog runs], kennels, cages, [transportation crates], [foot baths], [automatic feeders], [troughs], [feed racks], [wash stalls], [non porous fencing], [gates], [gathering], [guiding / controlling equipment], [and] [non porous harnesses & leashes]; commonly found in animal housing facilities, [poultry], [stall], [barn], [pen], [agricultural & livestock buildings], [greenhouses], [zoos], [boarding kennels], [veterinary] [clinics] [and/or] [practices], [animal rescue] [and] [shelter facilities], [fish facilities], [fish tanks], [fish farms], [hatcheries], [tack shops], [pet stores], [breeding facilities], [grooming facilities] [and] [catteries].

***(Footbaths (pedicure foot spa equipment) in Health clubs, spas, tanning salons, tanning spas, hair/nail/pedicure salons, barber/beauty shops, salons, tattoo parlors:)***

This product is a one-step (hospital-use) (germicidal) disinfectant cleaner, (fungicide), (\*virucide) (and) (deodorant) (odor-counteractant) (odor neutralizer) designed for cleaning, (and) disinfecting, (deodorizing) (and (killing) (controlling) mold and mildew on) (of) hard, non-porous footbath surfaces. It cleans quickly by removing body oils, dead tissue, soil and all other buildups or organic matter (found) on (hard nonporous (inanimate) (environmental)) footbath surfaces.

*{Note to Agency: Text appearing in [ brackets ] or ( parenthesis ) is done to show interchangeable or optional text. Any language which appears between { braces } and is italicized is for administrative purposes only and will NOT appear on final printed label. Variables such as CAPITALIZATION, plurals or singular, bold and italics are optional unless specified in 40 CFR. Listed uses and use sites can be used partially or in their entirety. Underlined text is new. Strike-through text means it has been removed.}*

It is designed for use on (Use daily on) (hard, non-porous environmental (inanimate) surfaces) (of) footbaths (pedicure foot spa equipment).

**(Household Use)**

This product (OR product name) is an effective [cleaner] [disinfectant] [sanitizer] on non-food contact surfaces in [around] [Residential], [Household], [Homecare], [Daycare centers] [settings].

This product (OR product name) is a[n] [concentrated] [Antibacterial][Multi-Purpose][Bathroom][Floor][Glass & Surface] [Kitchen<sup>†</sup>] [Restroom] [Cleaner] [Cleaning] [Disinfectant] [Disinfecting] [Sanitizer]. This product (OR product name) is for use in the *{insert on or more of the residential/household use sites listed below (List 3)}* [common hard nonporous household surfaces].

For everyday cleaning [and disinfecting] [use daily to clean [and disinfect]] [on] hard, non-porous surfaces [where germs are a concern] [made from] *{insert any surface material from the surface materials listed below (List 1)}* associated with kitchen<sup>†</sup> surfaces, hand-touch surfaces, *{or – list one or more of the hard non-porous surface listed below (List 2)}* and other hard non-food contact surfaces around the house[hold] [home]. [Not recommended for use on brass], [polished wood], [granite], [marble], [and] [leather].

**(Public and Transportation Facilities)**

Use Accel Concentrate in airplanes, airports, (boats), (buses), (cars), (emergency vehicles), (ships), (taxis), (trailers), (trains), (transportation terminals), (public facilities), (public washroom [restroom]). Use Accel Concentrate on washable nonporous surfaces of: (hand rails), (security bins), (escalator railing), (screens), (touch screen kiosk), (soap dispensers), (ticketing countertops), (faucets), (seatback tray), (seat armrest), (bathroom fixtures), (sink), (toilet), (toilet bowls), (toilet bowl surfaces), (tubs), (glazed tiles), (urinals), (walls), (chairs), (desks), (doorknobs), (floors), (garbage cans), (tables), (telephones), and (other hard nonporous) surfaces made of: (glazed ceramic), (glazed porcelain), (metal plastic (such as polystyrene or polypropylene), (sealed stone), (stainless steel), (vinyl and plastic upholstery).

**(For Aquaculture Facilities)**

Accel Concentrate is for the disinfection of environmental surfaces associated with aquaculture including vehicles (boats, trailers, autos, etc.), nets, boots, waders, dive suits, hoses, brushes and other similar equipment. It may also be used in foot dips.

**(Refill)**

**(To Refill Concentrate From Large Containers Into Smaller Containers:)**

This product may be used to fill and refill clean, properly labeled containers for dilution elsewhere within your facility. Make sure the small container has been cleaned, dried and properly labeled. Also make sure other items (funnels or hand pumps) are properly cleaned and dried. To refill, simply pour (or pump product) from the larger container directly into the smaller one being careful not to spill any product. Keep both containers sealed when not in use.

**(CLAIMS:) [Organisms:]**

(See reference sheet (enclosed in each case) for a complete list of organisms.)

When used as directed, this product is highly effective against a wide variety (broad-spectrum) of pathogenic microorganisms (including bacteria, antibiotic-resistant bacteria, viruses, fungi, mold and mildew.) At a 1:16 dilution (8 oz. of product per gallon of water), in the presence of 200 ppm hard water, 5% serum load and 5 minute contact time, unless otherwise noted, this product kills the following on hard, non-porous inanimate surfaces:

**Bacteria (Bactericidal Activity):**

*Pseudomonas aeruginosa* (ATCC 15442)  
*Salmonella enterica*, (ATCC 10708)  
(formerly known as *Salmonella choleraesuis*)

*Escherichia coli* O157:H7 (ATCC 35150)  
*Klebsiella pneumoniae* (ATCC 4352)  
*Listeria monocytogenes* (ATCC 19111)

{Note to Agency: Text appearing in [ brackets ] or ( parenthesis ) is done to show interchangeable or optional text. Any language which appears between { braces } and is italicized is for administrative purposes only and will NOT appear on final printed label. Variables such as CAPITALIZATION, plurals or singular, bold and italics are optional unless specified in 40 CFR. Listed uses and use sites can be used partially or in their entirety. Underlined text is new. Strike-through text means it has been removed.}

*Staphylococcus aureus* (ATCC 6538)  
*Acinetobacter baumannii*, (ATCC 19606)

*Shigella dysenteriae* (ATCC 13313)  
*Streptococcus pyogenes* (ATCC 12204)

**Antibiotic-Resistant (Strains of) Bacteria (Antibiotic-Resistant Bactericidal Activity):**

*Staphylococcus epidermidis* (MRSE) (ATCC 51625)  
*Staphylococcus aureus* (MRSA) (ATCC 33591)  
*Staphylococcus aureus*, (CA-MRSA) (clinical Isolate 08005)  
(Genotype USA400)  
*Escherichia coli*, (Extended Spectrum Beta-lactamase resistance [ESBL]<sup>†</sup>, (ATCC BAA-196)

*Streptococcus pneumoniae*, Penicillin Resistant (PRSP), (ATCC 700671)  
*Enterococcus faecium*, ( Vancomycin Resistant [VRE]) (ATCC 51559)  
*Staphylococcus aureus*, (CA-MRSA) (clinical Isolate 08001)  
(Genotype USA300)  
*Klebsiella pneumoniae*, (Carbapenem-resistant [KPC]), (ATCC BAA-1705)

{OR}

**[Bacteria] [Bactericidal]:**

[This product (OR product name)] At a 1:16 dilution [8 oz. of product per gallon of water] [in the presence of 200 ppm hard water] [and] [5% serum] [organic soil] is effective against [kills] [odor-causing] Bacteria: *Pseudomonas aeruginosa*, *Staphylococcus aureus*, *Salmonella enterica* [formerly known as *Salmonella choleraesuis*], [*Acinetobacter baumannii*], [*Escherichia coli* O157:H7], [*Klebsiella pneumoniae*], [*Listeria monocytogenes*], [*Shigella dysenteriae*], [*Streptococcus pyogenes*], [Methicillin Resistant *Staphylococcus aureus* (MRSA)], [Vancomycin Resistant *Enterococcus faecium* (VRE)], [Community Associated Methicillin Resistant *Staphylococcus aureus* (CA-MRSA)], [Methicillin Resistant *Staphylococcus epidermidis* (MRSE)] , [Penicillin Resistant *Streptococcus pneumoniae* (PRSP)] , [Extended Spectrum Beta-lactamase resistant *Escherichia coli* (ESBL)], [and] [Carbapenem-resistant *Klebsiella pneumoniae* (KPC)] [commonly found] [on hard non-porous inanimate surfaces] [in households] [using approved AOAC test methods] [under Good Laboratory Practices, [GLP's]], [and] [at] a 5 (five) minute contact time [in 5(five) minutes].

{OR}

**Kills** *Pseudomonas aeruginosa*, *Staphylococcus aureus*, *Salmonella enterica* [formerly known as *Salmonella choleraesuis*], [*Acinetobacter baumannii*], [*Escherichia coli* O157:H7], [*Klebsiella pneumoniae*], [*Listeria monocytogenes*], [*Shigella dysenteriae*], [*Streptococcus pyogenes*], [Methicillin Resistant *Staphylococcus aureus* (MRSA)], [Vancomycin Resistant *Enterococcus faecium* (VRE)], [Community Associated Methicillin Resistant *Staphylococcus aureus* (CA-MRSA)], [Methicillin Resistant *Staphylococcus epidermidis* (MRSE)] , [Penicillin Resistant *Streptococcus pneumoniae* (PRSP)] , [Extended Spectrum Beta-lactamase resistant *Escherichia coli* (ESBL)], [and] [Carbapenem-resistant *Klebsiella pneumoniae* (KPC)] on hard, non-porous [kitchen<sup>†</sup>] [bathroom] [restroom] [household] surfaces in 5 (five) minutes [and] at 1:16 dilution [8 oz. of product per gallon of water].

{OR}

**(Fungi) (Fungicidal Activity):**

This product is fungicidal when used as directed on hard, non-porous inanimate surfaces at a 1:16 dilution (8 oz. per gallon of water), and in the presence of a 5% serum load and 5 (five) minute contact time at 20°C (68°F).

*Trichophyton mentagrophytes*, (ATCC 9533)  
*Microsporum canis*, (ATCC 10214)

{or}

**Kills** *Trichophyton mentagrophytes*, [*Microsporum canis*] at a 1:16 dilution (8 oz. of product per gallon of water) on hard non-porous [inanimate] [environmental] surfaces with (in) 5 (five) minutes(s) (contact time).

At 1:16 - 1:64 dilution (2 - 8 oz. of product per gallon of water), in the presence of 200 ppm hard water, 5% serum load and 5 minute contact time, unless otherwise noted, this product kills the following on hard, non-porous inanimate surfaces:



*{Note to Agency: Text appearing in [ brackets ] or ( parenthesis ) is done to show interchangeable or optional text. Any language which appears between { braces } and is italicized is for administrative purposes only and will NOT appear on final printed label. Variables such as CAPITALIZATION, plurals or singular, bold and italics are optional unless specified in 40 CFR. Listed uses and use sites can be used partially or in their entirety. Underlined text is new. Strike-through text means it has been removed.}*

**\*Viruses (\*Virucidal Activity):**

- \*Herpes Simplex Type 2 (VR-734)
- \*Human Coronavirus (VR-740)
- \*Influenza Type A<sub>2</sub> (Hong Kong) (VR-544)
- \*Norovirus (Feline Calicivirus as the surrogate) (VR-782)
- \*Parainfluenza Type 3 (VR-93)
- \*Adenovirus Type 8, (ATCC VR-1368, Strain Trim)
- \*Poliovirus Type 1 (ATCC VR-1000)
- \*Respiratory Syncytial Virus (VR-26)
- \*Rotavirus (Strain WA)
- \*Vaccinia Virus (smallpox vaccine virus) (ATCC VR-119)
- \*Rhinovirus Type 37, Strain 151-1, (ATCC VR-1147)

Kills \*Hepatitis B Virus (HBV) & \*Hepatitis C Virus (HCV) when used as directed on hard, non-porous inanimate surfaces with a 5 minute contact time.

Kills \*HIV-1 (AIDS virus) (HTLV-III<sub>B</sub>) when used as directed on hard, non-porous inanimate surfaces with a 1 minute contact time.

Kills \*Influenza A Virus (H1N1) (ATCC VR-1469, Strain A/PR/8/34) when used as directed on hard, non-porous inanimate surfaces with a 1 minute contact time.

**[Veterinary \*Viruses][Animal Premise \*Viruses]**

**[Animal Premise \*Virucidal activity]**

- \*Feline Calicivirus (ATCC VR-782)
- \*Duck Hepatitis B Virus (DHBV)
- \*Bovine Viral Diarrhea Virus (BVDV) (ATCC VR-1422)
- \*Avian Influenza A, (H3N2) (ATCC VR-2072)
- \*Equine Influenza A (H3N8) virus, (strain Alaska/A/EQ/AK/29759/91)
- \*Canine Distemper Virus, (ATCC VR-128), (Strain Lederle)
- \*Porcine Respiratory & Reproductive Syndrome (PRRS) virus, (Strain NVSL)
- \*Equine Herpes Virus Type 1, (strain EHV1)
- \*Porcine Epidemic Diarrhea Virus, (Strain Colorado 2013 Isolate)
- \*Canine Coronavirus (ATCC VR-809)
- \*Canine Parainfluenza Virus (ATCC VR-666)
- \*Feline Infectious Peritonitis Virus (ATCC VR-2202)
- \*Feline Picornavirus ~~Virus~~ (ATCC VR-649)
- \*Feline Rhinotracheitis Virus (ATCC VR-636)
- \*Pseudorabies Virus (ATCC VR-135)
- \*Transmissible Gastroenteritis Virus
- \*Canine Adenovirus (ATCC VR-800)

**\*Canine Parvovirus:** Kills \*Canine Parvovirus (ATCC VR-2017) when used as directed on hard, non-porous inanimate surfaces at a 1:16 dilution (8 oz. per gallon of water), and in the presence of a 5% serum load and 5 (five) minute contact time.

**\*Canine Parvovirus:** Kills \*Canine Parvovirus (ATCC VR-2017, Strain cornell) when used as directed on hard, non-porous inanimate surfaces at a 1:32 dilution (4 oz. per gallon of water), and in the presence of a 5% serum load and 10 (ten) minute contact time.

**\*Minute Virus of Mice:** Kills \*Minute Virus of Mice (ATCC VR-1346, Strain Prototype (p)) when used as directed on hard, non-porous inanimate surfaces at a 1:16 dilution (8 oz. per gallon of water), and in the presence of a 5% serum load and 5 (five) minute contact time.

*{OR}*

*{Note reviewer: The next 2 options will be used for products without veterinary use language. Please note that all veterinary viruses have been removed from these options.}*

**\*[Viruses] [\*Virucidal]:**

{Note to Agency: Text appearing in [ brackets ] or ( parenthesis ) is done to show interchangeable or optional text. Any language which appears between { braces } and is italicized is for administrative purposes only and will NOT appear on final printed label. Variables such as CAPITALIZATION, plurals or singular, bold and italics are optional unless specified in 40 CFR. Listed uses and use sites can be used partially or in their entirety. Underlined text is new. Strike-through text means it has been removed.}

[This product (OR Product name)] At a [1:16] [to] 1:64 dilution [2 (to 8) oz. of product per gallon of water] [is effective against]: [Adenovirus Type 8], [Herpes Simplex Virus Type 2], [Human Coronavirus], [Influenza Virus Type A<sub>2</sub> (Hong Kong)] , [Norovirus (Feline Calicivirus as the surrogate)], [Parainfluenza Virus Type 3], [Poliovirus Type 1], [Respiratory Syncytial Virus], [Rhinovirus Type 37], [Rotavirus], and [Vaccinia Virus (smallpox vaccine virus)] [using approved ASTM test methods] [under Good Laboratory Practices, [GLP's]], [in the presence of 5% serum load] [and] [in] 5 (five) minutes [contact time].

{OR}

**\*Kills** [Adenovirus Type 8], [Herpes Simplex Virus Type 2], [Human Coronavirus], [Influenza Virus Type A<sub>2</sub> (Hong Kong)] , [Norovirus (Feline Calicivirus as the surrogate)], [Parainfluenza Virus Type 3], [Poliovirus Type 1], [Respiratory Syncytial Virus], [Rhinovirus Type 37], [Rotavirus], and [Vaccinia Virus (smallpox vaccine virus)] at a [1:16] [to] 1:64 dilution on hard, non-porous [inanimate] [environmental] surfaces with a 5 minute contact time.

**\*Kills** Hepatitis B Virus (HBV) & Hepatitis C Virus (HCV) when used as directed at [a] [1:16] [to] 1:64 dilution on hard, non-porous inanimate [environmental] surfaces with a [in] 5 [five] minute[s] [contact time].

**\*Kills** Influenza A virus (H1N1) at a [1:16] [to] 1:64 dilution on hard, non-porous [inanimate] [environmental] surfaces with a [in] 1(one) minute [contact time].

**\*Kills** HIV-1 when used as directed at [a] [1:16] [to] 1:64 dilution on hard, non-porous [inanimate] [environmental] surfaces with a [in] 1(one) minute [contact time].

**Mold/Mildew (Mildewcidal Activity) - kills the growth of mold and mildew:** (when diluted at 1:16 in 200 ppm hard water at a 10 minute contact time): *Aspergillus niger* (ATCC 16404) (and the odors caused by them) when applied to hard, non-porous environmental surfaces.

**Mold/Mildew (Mildewstatic Activity) - controls and prevents the growth of mold and mildew:** (when diluted at 1:16 in 200 ppm hard water at a 10 minute contact time): *Aspergillus niger* (ATCC 6275) (and the odors caused by them) when applied to hard, non-porous environmental surfaces.

**Bactericidal Stability of Use-Solution** – [Tests show] this product (OR Product name) [as a disinfectant], when diluted at 1:16 dilution (8 oz. of product per gallon of water) [in 200 ppm hard water], in the presence of 5% serum, remains effective against *Staphylococcus aureus*, *Salmonella enterica* (formerly known as *Salmonella choleraesuis*) and *Pseudomonas aeruginosa* for up to 90 days in storage as long as the bottle remains sealed. If the use-solution becomes visibly dirty or contaminated, it must be discarded and a fresh product prepared. Always use clean, dry containers when diluting this product. Treated surfaces must remain wet for 5 minutes.

**Sanitizing:** When used as a non-food contact sanitizer at a 1:16 dilution (8 oz. of product per gallon of water), in the presence of 200 ppm hard water, 5% serum load, this product reduces the following bacteria by 99.9% with a 30 second contact time on hard non-porous inanimate surfaces:

*Enterobacter aerogenes* (ATCC 13048)  
*Enterococcus faecalis*, Vancomycin Resistant (VRE), (ATCC 51575)  
*Escherichia coli*, Extended Spectrum Beta-lactamase resistance (ESBL), (ATCC BAA-196)  
*Listeria monocytogenes*, (ATCC 19111)

*Pseudomonas aeruginosa* (ATCC 15442)  
*Salmonella enterica* (ATCC 10708) (formerly known as *Salmonella choleraesuis*)  
*Staphylococcus aureus* (ATCC 6538)

**Sanitizing:** When used as a non-food contact sanitizer at a 1:128 dilution (1 oz. of product per gallon of water), in the presence of 200 ppm hard water, 5% serum load, this product reduces the following bacteria by 99.9% with a 3 minute contact time on hard non-porous inanimate surfaces:

*Staphylococcus aureus* (ATCC 6538)  
*Klebsiella pneumoniae* (ATCC 4352)

*Listeria monocytogenes* (ATCC 19111)  
*Pseudomonas aeruginosa* (ATCC 15442)

{Note to Agency: Text appearing in [ brackets ] or ( parenthesis ) is done to show interchangeable or optional text. Any language which appears between { braces } and is italicized is for administrative purposes only and will NOT appear on final printed label. Variables such as CAPITALIZATION, plurals or singular, bold and italics are optional unless specified in 40 CFR. Listed uses and use sites can be used partially or in their entirety. Underlined text is new. Strike-through text means it has been removed.}

*Escherichia coli* (ATCC 11229)  
*Enterococcus faecalis* (ATCC 29212)

*Salmonella enterica*, (ATCC 10708)  
(formerly known as *Salmonella choleraesuis*)

{OR}

## Non-Food Contact Surface Sanitizer –

### {OPTION 1}

At a 1:128 dilution (1 oz. of product per gallon of water) [with 200 ppm hard water][in the presence of 5% serum load] [and] [in] 3 minutes [contact time]:

**Kills** *Klebsiella pneumoniae*, [*Salmonella enterica* [formerly known as *Salmonella choleraesuis*]], [*Pseudomonas aeruginosa*], *Staphylococcus aureus*, [*Escherichia coli*], [*Enterococcus faecalis*], [*Listeria monocytogenes*] on hard, non-porous [inanimate] [environmental] surfaces.

### {OPTION 2}

At a 1:16 dilution (8 oz. of product per gallon of water) [with 200 ppm hard water] [in the presence of 5% serum load] [and] [in] 30 seconds [contact time]:

**Kills** *Enterobacter aerogenes*, [Vancomycin Resistant *Enterococcus faecalis*, (VRE)], [Extended Spectrum Beta-lactamase resistance *Escherichia coli*, (ESBL)], [*Listeria monocytogenes*], [*Pseudomonas aeruginosa*], [*Salmonella enterica* (formerly known as *Salmonella choleraesuis*)], *Staphylococcus aureus* on hard, non-porous [environmental] surfaces.

**Malodor(s) (Activity) (Odor) (Counteractancy)** – reduces [eliminates] [destroys] odors and odor-causing bacteria on hard, nonporous surfaces in restroom areas, behind and under sinks and counters, and storage areas (and other places where bacterial growth can cause malodors), (when used as directed at a 1:16 dilution (8 oz. of product per gallon of water), in the presence of 200 ppm hard water in [and a] 30 second[s] [contact time] (or) (when used as directed at a 1:128 dilution (1 oz. per gallon of water), in the presence of 200 ppm hard water in [and a] 3 minute[s] [contact time]).

### (H1N1 Information:)

{Note to reviewer: We will choose one or more of these statements depending on available space on the product label.}

- \*Respiratory illnesses attributable to Pandemic 2009 H1N1 are caused by Influenza A virus. (This product or product name) is a broad-spectrum hard surface disinfectant that has been shown to be effective against Influenza Type A<sub>2</sub> (Hong Kong), (VR-544), and is expected to inactivate all Influenza A viruses including Pandemic 2009 H1N1 (formerly called swine flu).
- \*This product has demonstrated effectiveness against Influenza A virus and is expected to inactivate all Influenza A viruses including Pandemic 2009 H1N1 Influenza A virus.
- \*This product has demonstrated effectiveness against Influenza Type A<sub>2</sub> (Hong Kong), (VR-544), and is expected to inactivate all Influenza A viruses including Pandemic 2009 H1N1 (formerly called swine flu).
- \*Kills Pandemic 2009 H1N1 Influenza A virus (formerly called swine flu).
- \*Kills Pandemic 2009 H1N1 Influenza A virus.

### (Modes of Application:)

This product can be applied by mop, sponge, cloth, paper towel, coarse trigger sprayer, or auto-scrubber. Change cloth, sponges or towels frequently to avoid redeposition of soil.

{Note: the following section on summary of claims is optional and might be inserted in a band at the bottom of the label}

(FUNGICIDAL: 5 MIN. @ 1:16)

(\*VIRUCIDAL: 5 MIN. @ 1:64)

(BACTERICIDAL: 5 MIN. @ 1:16)

| (BROAD-SPECTRUM) NON-FOOD CONTACT SANITIZER @ 1:128: 3 MIN.)

OR

| (BROAD-SPECTRUM) NON-FOOD CONTACT SANITIZER @ 1:16: 30 SEC.)

## DIRECTIONS FOR USE:



*{Note to Agency: Text appearing in [ brackets ] or ( parenthesis ) is done to show interchangeable or optional text. Any language which appears between { braces } and is italicized is for administrative purposes only and will NOT appear on final printed label. Variables such as CAPITALIZATION, plurals or singular, bold and italics are optional unless specified in 40 CFR. Listed uses and use sites can be used partially or in their entirety. Underlined text is new. Strike-through text means it has been removed.}*

It is a violation of Federal Law to use this product in a manner inconsistent with its labeling.

*{Note to reviewer: The following paragraph will not be used on products with non healthcare use site.}*

(This product is not to be used as a terminal sterilant/high level disinfectant on any surface or instrument that (1) is introduced directly into the human body, either into or in contact with the blood stream or normally sterile areas of the body, or (2) contacts intact mucous membranes but which does not ordinarily penetrate the blood barrier or otherwise enter normally sterile areas of the body. This product may be used to pre-clean or decontaminate critical or semi-critical medical devices prior to sterilization or high level disinfection.)

**To prepare Use Solution: (Use Dilution Made Easy:) (Dilution Chart:)**

Ratio	Per Gallon of Water	(Per Liter of Water)	(Per 32oz of Water)
1:16	8 oz.	64 mL	2oz
1:32	4 oz.	32 mL	1oz
1:64	2 oz.	16 mL	[0.5oz] [1/2oz]
1:128	1 oz.	8 mL	[0.25oz] [1/4oz]
1:256	0.5 oz.	4 mL	[0.125oz] [1/8oz]

*{Note to Agency: Text appearing in [ brackets ] or ( parenthesis ) is done to show interchangeable or optional text. Any language which appears between { braces } and is italicized is for administrative purposes only and will NOT appear on final printed label. Variables such as CAPITALIZATION, plurals or singular, bold and italics are optional unless specified in 40 CFR. Listed uses and use sites can be used partially or in their entirety. Underlined text is new. Strike-through text means it has been removed.}*

**{Packaging specific directions}**

*{Note to EPA: The directions that appear for specific containers will be substituted for the chart above}*

**(For Dosing Bottles – Option 1)**

**1:16 dilution**

- Loosen cap on Concentrate bottle. Squeeze the bottle and fill up to 1oz mark [with solution].
- Remove cap and dispense [the solution] in dilution [container] [pail] [bucket][bottle].
- Repeat steps 1&2
- Add 1 quart (32 oz.) of water and mix well.

**(1:32 dilution)**

- Loosen cap on Concentrate bottle. Squeeze the bottle and fill up to 1 oz mark [ with solution].
- Remove cap and dispense [the solution] in dilution [container][pail][bucket][bottle].
- 
- Add 1 quart (32 oz.) of water and mix well.

**(1:64 dilution)**

- Loosen cap on Concentrate bottle. Squeeze the bottle and fill up to ½ oz mark [with solution].
- Remove cap and dispense [the solution] in dilution [container] [pail] [bucket][bottle].
- Add 1 quart (32 oz.) of water and mix well.

**(1:128 Dilution)**

- Loosen cap on Concentrate bottle. Squeeze the bottle and fill up to 1 oz mark [with solution].
- Remove cap and dispense [the solution] in dilution [container] [pail] [bucket][bottle].
- Add 1 gallon of water and mix well

**(1:256 Dilution)**

- Loosen cap on Concentrate bottle. Squeeze the bottle and fill up to ½ oz mark [with solution].
- Remove cap and dispense [the solution] in dilution [container] [pail] [bucket][bottle].
- Add 1 gallon of water and mix well

{Note to Agency: Text appearing in [ brackets ] or ( parenthesis ) is done to show interchangeable or optional text. Any language which appears between { braces } and is italicized is for administrative purposes only and will NOT appear on final printed label. Variables such as CAPITALIZATION, plurals or singular, bold and italics are optional unless specified in 40 CFR. Listed uses and use sites can be used partially or in their entirety. Underlined text is new. Strike-through text means it has been removed.}

{Note to EPA: The directions that appear for specific containers will be substituted for the chart above}

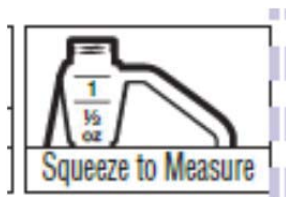
**(For Dosing Bottles – Option 2)** {Note to reviewer: Option 3 might be used in place of “Non-Food Sanitizer row in table below.}

**DIRECTIONS TO MIX:**

1. Partially fill empty spray bottle or bucket to 75% capacity with cold water.
2. Loosen cap on CONCENTRATE bottle. Slowly squeeze bottle until the liquid reaches the desired fill line. **(2 “shots” into spray bottle for 1:16 ratio).** EXCEEDING RECOMMENDED MIXTURE RATIO DOES NOT IMPROVE CLEANING PERFORMANCE.
3. Remove cap and carefully pour concentrate into partially filled spray bottle or bucket (this step reduces foaming within the container). Add remaining water and replace cap when using spray bottle.
4. Gently shake or mix the concentrate and water within the container prior to use.

Do not use undiluted. For use with SC Johnson Professional refillable spray bottle.

Level of Anti-Microbial Activity	Dilution Rate Needed	Concentrate Mixed into SCJ Professional Quart Trigger Sprayer	Concentrate Mixed into bucket Per Gallon
Hospital Disinfectant	1:16	2 oz.	8 oz.
Non-Food Sanitizer	1:16	2 oz	8 oz.



{Note to Agency: Text appearing in [ brackets ] or ( parenthesis ) is done to show interchangeable or optional text. Any language which appears between { braces } and is italicized is for administrative purposes only and will NOT appear on final printed label. Variables such as CAPITALIZATION, plurals or singular, bold and italics are optional unless specified in 40 CFR. Listed uses and use sites can be used partially or in their entirety. Underlined text is new. Strike-through text means it has been removed.}

{Note to EPA: The directions that appear for specific containers will be substituted for the chart above}

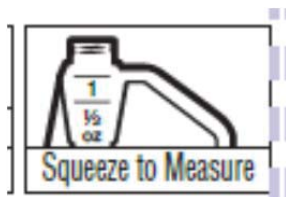
**(For Dosing Bottles – Option 3)**

**DIRECTIONS TO MIX:**

1. Fill the bucket with 1 Gallon of cold water.
2. Loosen cap on CONCENTRATE bottle. Slowly squeeze bottle until the liquid reaches the desired fill line. **EXCEEDING RECOMMENDED MIXTURE RATIO DOES NOT IMPROVE CLEANING PERFORMANCE.**
3. Remove cap and carefully pour concentrate into bucket (this step reduces foaming within the container).
4. Gently mix the concentrate and water within the container prior to use.

Do not use undiluted. For use with SC Johnson Professional refillable spray bottle.

Level of Anti-Microbial Activity	Dilution Rate Needed	Concentrate Mixed into bucket Per Gallon
Non-Food Sanitizer	1:128	1 oz.



*{Note to Agency: Text appearing in [ brackets ] or ( parenthesis ) is done to show interchangeable or optional text. Any language which appears between { braces } and is italicized is for administrative purposes only and will NOT appear on final printed label. Variables such as CAPITALIZATION, plurals or singular, bold and italics are optional unless specified in 40 CFR. Listed uses and use sites can be used partially or in their entirety. Underlined text is new. Strike-through text means it has been removed.}*

**(1:16 Dilution - Single Dilution Dispensers)**

**To Prepare Use Solution:** Add the product at 8 oz. of product per gallon of water (1:16).

*{Note to reviewer: The directions that appear for specific container sizes will be substituted for the sentence above only on single dilution containers.}*

**(GENERAL DISPENSER INSTRUCTIONS)** *{Note to reviewer: These instructions may be substituted for any dispensing device to prepare the use solution}: (Remove cap and) insert cartridge into dispenser. Note: See dispenser instructions for proper cartridge placement. Once cartridge is properly inserted into dispenser, follow dispenser use instructions to dispense a 1: 16 solution into a bucket, bottle, scrubber or other container.*

**SOLUTIONS CENTER™ DISPENSING SYSTEMS** (64 oz. (2 qt.) containers) - (Remove cap and) insert cartridge into dispenser. Note: See dispenser instructions for proper cartridge placement. Once cartridge is in place, (squeeze the handle) (or) (press the button) to dispense a 1:16 solution into a bucket, bottle, scrubber or other container.

**J-FILL™ DISPENSING SYSTEMS** (84.5 oz. (2.5 L) containers) - (Remove cap and) insert cartridge into dispenser. Note: See dispenser instructions for proper cartridge placement. Once cartridge is in place, (squeeze the handle) (or) (press the button) to dispense a 1:16 solution into a bucket, bottle, scrubber or other container.

**COMMAND CENTER™ DISPENSING SYSTEMS** (1.5 gal. containers) - (Remove cap and) insert cartridge into dispenser. Note: See dispenser instructions for proper cartridge placement. Once cartridge is in place, press the button to dispense a 1:16 solution into a bucket, bottle, scrubber or other container.

{Note to Agency: Text appearing in [ brackets ] or ( parenthesis ) is done to show interchangeable or optional text. Any language which appears between { braces } and is italicized is for administrative purposes only and will NOT appear on final printed label. Variables such as CAPITALIZATION, plurals or singular, bold and italics are optional unless specified in 40 CFR. Listed uses and use sites can be used partially or in their entirety. Underlined text is new. Strike-through text means it has been removed.}

**(For Multiple Dilution Dispensers)**

{Note to reviewer: The directions that appear for specific container sizes will be substituted for the sentence above only on multiple dilution containers.}

(GENERAL DISPENSER INSTRUCTIONS) {Note to reviewer: These instructions may be substituted for any dispensing device to prepare the use solution}: (Remove cap and) insert cartridge into dispenser. Note: See dispenser instructions for proper cartridge placement. Once cartridge is properly inserted into dispenser, follow dispenser use instructions to dispense a 1: 16 or 1:64 or 1: 128 or 1:256 solution into a bucket, bottle, scrubber or other container.

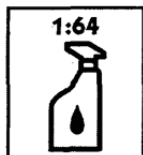
**J-FILL™ DISPENSING SYSTEMS** (84.5 oz. (2.5 L) containers) - (Remove cap and) insert cartridge into dispenser. Note: See dispenser instructions for proper cartridge placement. Once cartridge is in place, (squeeze the handle) (or) (press the button) to dispense a 1:16 or 1:64 solution into a bucket, bottle, scrubber or other container.

**RTD™ SYSTEMS** (1.5 or 5 L containers) - Using the RTD unit, dispense product into a (trigger sprayer), (auto scrubber,) (or) bucket.

For Disinfection (Cleaning) (~~and~~ Mildewcidal) (~~and~~ Mildewstatic) (~~and~~ \*Canine Parvovirus) (~~and~~ non-food contact



sanitizer) set the control knob to the setting, which provides 8 oz. of product per gallon of water dilution (1:16).

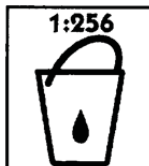


For \*Virucidal set the control knob to the setting, which provides 2 oz. of product per Gallon of water dilution (1:64).

For Use as a Cleaner/Degreaser, Deodorizer and Non-Food Contact Sanitizer set the control knob to the



setting, which provides 1 oz. of product per gallon of water dilution (1:128).



For Use as a Cleaner/Degreaser set the control knob to the setting which provides ½ oz. of product per gallon of water dilution (1:256).

*{Note to Agency: Text appearing in [ brackets ] or ( parenthesis ) is done to show interchangeable or optional text. Any language which appears between { braces } and is italicized is for administrative purposes only and will NOT appear on final printed label. Variables such as CAPITALIZATION, plurals or singular, bold and italics are optional unless specified in 40 CFR. Listed uses and use sites can be used partially or in their entirety. Underlined text is new. Strike-through text means it has been removed.}*

**Smart DOSE™ SYSTEMS** (1.5 or 5 L containers) - Using the Smart DOSE unit, dispense product into a (trigger sprayer) (or) bucket.



To dispense product into a spray bottle, select spray bottle icon on Smart DOSE™ bottle, pull up on selector knob and completely push down on selector knob.



To dispense product into a bucket, select bucket icon on Smart DOSE™ bottle, pull up on selector knob and completely push down on selector knob.

**[\*\*\*]For Use as a (Daily) (One-Step) Cleaner/Disinfectant:** (Dilute at 8.0 oz. of product per gallon of water (1:16)).

1. Pre-clean heavily soiled areas.
2. Apply Use Solution by (hand pump) coarse trigger sprayer to hard, non-porous environmental surfaces. Spray 6 - 8 inches from surface; making sure to wet surfaces thoroughly.
3. All surfaces must remain wet for five (5) minutes.
4. Wipe surfaces (and let air dry).

*{Note: Next paragraph is optional language}*

**(Note -** Rinsing is not necessary unless floors are to be coated with finish or restorer. When cleaning floors position wet-floor signs around area to be cleaned. Floors will be slippery when wet or contaminated with foreign materials.)

**For Use as (Daily) Bathroom (Restroom) (One-Step) Cleaner/Disinfectant:** (Dilute at 8.0 oz. of product per gallon of water (1:16)).

1. Pre-clean heavily soiled areas.
2. Apply Use Solution by (hand pump) coarse trigger sprayer to hard, non-porous environmental surfaces. Spray 6 - 8 inches from surface; making sure to wet surfaces thoroughly.
3. All surfaces must remain wet for five (5) minutes.
4. Wipe surfaces (and let air dry).

*{Note: Next paragraph is optional language}*

**(Note -** Rinsing is not necessary unless floors are to be coated with finish or restorer. When cleaning floors position wet-floor signs around area to be cleaned. Floors will be slippery when wet or contaminated with foreign materials.)

**For Use To Clean and Disinfect [Shower Rooms], [Locker Rooms] [and] [Other] Large, Open Areas with Floor Drains:** (Dilute at 8.0 oz. of product per gallon of water (1:16).)

1. Pre-clean heavily soiled areas.
2. Apply Use Solution to floors, walls and ceilings making sure not to over spray. To disinfect, all surfaces must remain wet for five (5) minutes.
3. Scrub using a deck brush or other coarse material as necessary.
4. Rinse surfaces thoroughly and let air dry.

*{Note: Next paragraph is optional language}*

**(NOTE: When cleaning floors position wet-floor signs around area to be cleaned. Floors will be slippery when wet or contaminated with foreign materials.)**

**For use as a \*Virucide:** (Dilute at 2 - 8 oz. of product per gallon of water (1:16 - 1:64).)

1. Pre-clean heavily soiled areas.



*{Note to Agency: Text appearing in [ brackets ] or ( parenthesis ) is done to show interchangeable or optional text. Any language which appears between { braces } and is italicized is for administrative purposes only and will NOT appear on final printed label. Variables such as CAPITALIZATION, plurals or singular, bold and italics are optional unless specified in 40 CFR. Listed uses and use sites can be used partially or in their entirety. Underlined text is new. Strike-through text means it has been removed.}*

2. Apply Use Solution until thoroughly wet.
3. Let stand for five (5) minutes.
4. Wipe surfaces (and let air dry).

**\* This product kills HBV, HCV and HIV-1 on pre-cleaned environmental surfaces/objects previously soiled with blood/body fluids** in health care settings (Hospitals, Nursing Homes) [and] [or] [other] [settings] in which there is an expected likelihood of soiling of inanimate surfaces/objects with blood or body fluids, and in which the surfaces/objects likely to be soiled with blood or body fluids can be associated with the potential for transmission of Hepatitis B Virus (HBV), Hepatitis C Virus (HCV) and Human Immunodeficiency Virus Type 1 (HIV-1) (associated with AIDS).

**SPECIAL INSTRUCTIONS FOR CLEANING AND DECONTAMINATION AGAINST HBV, HCV and HIV-1 OF SURFACES/OBJECTS SOILED WITH BLOOD/BODY FLUIDS.**

**Personal Protection:** Disposable latex or vinyl gloves, gowns, face masks, and eye coverings [as appropriate], must be worn during all cleaning of body fluids, blood, and decontamination procedures.

**Cleaning Procedures:** Blood and body fluids must be thoroughly cleaned from surfaces and objects before application of this product.

**Contact Time:** Allow surface to remain wet for 1 minute to kill HIV-1, and for 5 minutes to kill HBV, HCV, fungi and all other organisms cited on the label.

**Disposal of Infectious Material:** Cleaning materials used that may contain blood and other body fluids must be autoclaved and/or disposed of according to Federal, State, and local regulations for infectious waste disposal.

**To Kill \*Minute virus of mice:** (Dilute at 8.0 oz. of product per gallon of water (Dilute 1:16).)

1. Pre-clean heavily soiled areas.
2. Apply Use Solution until thoroughly wet.
3. Let stand for five (5) minutes.
4. Wipe surfaces (and let air dry).

**To Kill \*Canine Parvovirus:** (Dilute at 4.0 oz. of product per gallon of water (1:32).)

1. Pre-clean heavily soiled areas.
2. Apply Use Solution until thoroughly wet.
3. Let stand for ten (10) minutes.
4. Wipe surfaces (and let air dry).

**To Kill Mold and Mildew:** (Dilute at 8.0 oz. of product per gallon of water (1:16).)

Pre-clean surfaces. Apply Use Solution to hard, non-porous environmental surfaces. Allow surfaces to remain wet for ten (10) minutes. Wipe surfaces (and let air dry).

**To Control Mold and Mildew:** (Dilute at 8.0 oz. of product per gallon of water (1:16).)

Apply Use Solution to pre-cleaned hard, non-porous environmental surfaces. Wipe surfaces (and let air dry). Repeat application weekly or when growth reappears.

**To Kill Fungi:** (Dilute at 8.0 oz. of product per gallon of water (1:16).)

Pre-clean heavily soiled areas. Apply Use Solution to hard, non-porous environmental surfaces. Allow surface to remain wet for five (5) minutes. Wipe surfaces (and let air dry).

**For Use as a Bowl Cleaner/Disinfectant in Toilet Bowls [and Urinals] from Use-Dilution:** (Dilute at 8.0 oz. of product per gallon of water (1:16).)

1. Pre-clean heavily soiled areas.

*{Note to Agency: Text appearing in [ brackets ] or ( parenthesis ) is done to show interchangeable or optional text. Any language which appears between { braces } and is italicized is for administrative purposes only and will NOT appear on final printed label. Variables such as CAPITALIZATION, plurals or singular, bold and italics are optional unless specified in 40 CFR. Listed uses and use sites can be used partially or in their entirety. Underlined text is new. Strike-through text means it has been removed.}*

2. Empty toilet bowls by forcing water through the trap. Apply Use Solution to exposed surfaces in toilet bowls and urinals.
3. Swab entire surface area especially under the rim.
4. Allow entire surface to remain wet for five (5) minutes.
5. Flush toilet or urinal and rinse swab applicator thoroughly.

**For Use as a Cleaner/Disinfectant in non-food handling areas of Food Processing Plants:** (Dilute at 8.0 oz. of product per gallon of water (1:16))

1. Apply Use Solution evenly over surface. Be sure to wet all surfaces thoroughly.
2. Allow product to remain on surface for five (5) minutes.
3. Wipe with clean cloth, sponge or paper towel.
4. For heavily soiled areas, thoroughly clean surface prior to disinfecting.

**For Use to Clean and Disinfect Barber and Beauty/Manicure Instruments and Tools:** (Dilute at 8.0 oz. of product per gallon of water (1:16).)

1. Pre-clean heavily soiled items.
2. Completely immerse pre-cleaned combs, brushes, scissors, clipper blades, razors, manicure implements and other non-porous instruments in the Use Solution so that surfaces remain wet for five (5) minutes.
3. Rinse surfaces thoroughly and let air dry before reuse.
4. Change solution daily or when visibly dirty.

NOTE: Remove instruments after five (5) minutes. Then rinse, dry and keep in a clean, non-contaminated receptacle until use. Prolonged soaking may cause damage to instruments.

**For Treatment of Animal Housing Facilities (including Poultry barns):** (Dilute at 8.0 oz. of product per gallon of water (1:16).)

1. Remove all animals and feeds from areas being treated.
2. Remove all litter and [manure] [fecal matter] from floors, walls and surfaces of [barns], [pens], [stalls], [chutes], [runs] and other facilities occupied or traversed by animals.
3. Empty or cover all [troughs], [racks] and other feeding and watering appliances.
4. Thoroughly clean all surfaces with soap or detergent and rinse with water.
5. Apply fresh Use Solution to [floors], [walls], [cages] and [other washable] hard, non-porous environmental surfaces. For smaller surfaces, use a trigger spray bottle to spray all surfaces with solution until wet. To disinfect, all surfaces must remain wet for five (5) minutes.
6. Immerse all [halters], [ropes], and other types of equipment used in handling and restraining animals, as well as [forks], [shovels], and [scrapers] used for removing [litter] and [manure] [fecal matter].
7. Ventilate buildings and other closed spaces. Do not house animals or re-employ equipment until product has dried.
8. For disinfection of feed [racks], [troughs], [automatic feeders], [fountains] and [watering appliances] scrub with use-solution, let stand five (5) minutes. Then thoroughly scrub all treated surfaces with soap or detergent and rinse with potable water before reuse.

**For Treatment of Kennels and Cages:** (Dilute at 8.0 oz. of product per gallon of water (1:16).)

1. Remove all animals and feeds from areas being treated.
2. Remove all litter and [manure] [fecal matter] from floors, walls and surfaces of kennels, cages, and other facilities occupied or traversed by animals.
3. Empty or cover all racks, [bowls] and other feeding and watering appliances.
4. Thoroughly clean all surfaces with soap or detergent and rinse with water.
5. Apply fresh Use Solution to [floors], [walls], cages and other [washable] hard, non-porous environmental surfaces. For smaller surfaces, use a trigger spray bottle to spray all surfaces with solution until wet. To disinfect, all surfaces must remain wet for five (5) minutes.
6. Immerse all leashes, [collars] and other types of equipment used in handling and restraining animals, as well as [forks], [shovels], and scrapers used for removing **litter** and [manure] [fecal matter].
7. Ventilate buildings and other closed spaces. Do not house animals or re-employ equipment until product has dried.

*{Note to Agency: Text appearing in [ brackets ] or ( parenthesis ) is done to show interchangeable or optional text. Any language which appears between { braces } and is italicized is for administrative purposes only and will NOT appear on final printed label. Variables such as CAPITALIZATION, plurals or singular, bold and italics are optional unless specified in 40 CFR. Listed uses and use sites can be used partially or in their entirety. Underlined text is new. Strike-through text means it has been removed.}*

8. For disinfection of feed racks, bowls, [automatic feeders], and watering appliances scrub with use-solution, let stand five (5) minutes. Then thoroughly scrub all treated surfaces with soap or detergent and rinse with potable water before reuse.

**For use as a Boot / Shoe Wash:** (Dilute at 8.0 oz. of product per gallon of water (1:16))

To prevent cross contamination into animal areas, shoe baths containing one inch of freshly made disinfecting solution must be placed at all entrances to building. Scrape waterproof shoes or boots and thoroughly scrub with this product [or product name] and rinse with water. Place in [insert product name]. Allow product to remain in contact with shoes or boots for 5 minutes and allow to air dry. All treated surfaces that will contact feed or drinking water must be thoroughly scrubbed with soap or detergent and then rinsed with potable water before reuse.

**For Cleaning and Disinfection of Vehicles:** (Dilute at 8.0 oz. of product per gallon of water (1:16).)

To disinfect the non-porous, hard surfaces of vehicles: Remove all [litter] and [manure] [fecal matter] for surfaces and thoroughly clean surfaces with this product [or product name] and rinse with water. Apply use solution of this product [or product name] using a high pressure or coarse spray system. Allow product to remain in contact with surfaces for 5 minutes and allow to air dry. All treated surfaces that will contact feed or drinking water must be thoroughly scrubbed with soap or detergent and then rinsed with potable water before reuse.

### Recommended Applications & Dilutions for Animal Housing Facilities

Area	Recommended Dilution	Contact Time*	Description
Non-Animal Related Hallways and Offices	1:128 (1oz/gal)	3 Min.*	Non-Food Contact Sanitization
Daily care of all Animal Housing Areas & Enclosures	1:64 (2oz/gal)	5 Min.*	Virucide for all listed viruses except Parvovirus and Minute virus of mice
High Risk / Quarantine areas and once / week deep cleaning of all Animal Areas and Enclosures**	1:32 (4oz/gal)	10 Min.*	Virucide for all listed viruses except Minute virus of mice
Confirmed Disease / Outbreak Conditions	1:16 (8oz/gal)	5 Min.*	Virucide, Bactericide and Fungicide for all listed Viruses, Bacteria and Fungi

\* Contact time is a critical component of any disinfectant's protocol – attention should be given to ensure that the surface remains visibly wet for the entire time.

\*\* Also perform deep clean prior to a new animal going into any kennel or enclosure

\* Follow Direction for Use [from label]

**For use to clean and disinfect life science laboratory surfaces, instruments and glassware:** (Dilute at 8.0 oz. of product per gallon of water (1:16).)

1. Pre-clean heavily soiled areas.
2. Apply Solution by spray cloth disposable wipe or mop to hard, non-porous environmental surfaces or completely immerse pre-cleaned glassware and compatible instruments in solution.
3. Immerse or allow the surface to remain wet for 1 minute. Use a 5min contact time for fungi.
4. For glassware/instrument: Rinse surface thoroughly and let air dry before re-use. For surfaces: Wipe surface dry.
5. For glassware/instrument: Change immersion solution after each use.

**For use as a disinfectant on pre-cleaned non-critical medical devices (1), instruments and implements:** (Dilute at 8.0 oz. of product per gallon of water (1:16).)

1. Instrument must be thoroughly cleaned to remove excess organic debris, rinsed and dried.

*{Note to Agency: Text appearing in [ brackets ] or ( parenthesis ) is done to show interchangeable or optional text. Any language which appears between { braces } and is italicized is for administrative purposes only and will NOT appear on final printed label. Variables such as CAPITALIZATION, plurals or singular, bold and italics are optional unless specified in 40 CFR. Listed uses and use sites can be used partially or in their entirety. Underlined text is new. Strike-through text means it has been removed.}*

2. Thoroughly clean and rinse lumens of hollow instruments.
3. Using either tray or an ultrasonic unit, immerse instrument in (diluted) use solution [of Accel (concentrate)] for 5 minutes at room temperature.
4. Remove and rinse instruments.
5. Wipe dry prior to use.
6. Discard solution after each use.

(1) Non-critical medical devices are items that come in contact only with intact skin.

**Note: Critical and Semi-critical devices must be followed up by appropriate terminal sterilization/high-level disinfection process.**

**For use as a disinfectant, (fungicide), (\*virucide) on hard, non-porous (inanimate) (environmental) surfaces of footbaths (pedicure foot spa equipment)** (Dilute at 8.0 oz. of product per gallon of water (1:16)):

1. **Drain:** Drain the water (from) (the unit) (foot spa) (basin) (bowl) and remove any visible debris.
2. **Clean:** Thoroughly clean all (hard, non-porous (inanimate) (environmental)) surfaces with use solution of Accel Concentrate [(Dilute) 1.0 – 8.0 oz. per gallon of water (1:16 to 1:128)] (soap) (detergent), then rinse with water and drain.
3. **Apply (Fill):** (Saturate with) (Use) (Apply) a use solution of [(Dilute) 8.0 oz. per gallon of water] (of this product) (or product name) on all hard non-porous (inanimate) (environmental) surfaces with a brush, cloth, mop, sponge, auto scrubber, mechanical spray device ((hand pump) coarse pump or trigger spray device).
4. **Scrub (Circulate):** Brush or swab thoroughly and allow solution to stand for 5 minutes. [For spray applications, spray 6-8 inches from surface]. [For Whirlpool foot spas, air-jet basins, “pipe-less” foot spas, and other circulating spas it is best to fill the basin with the use solution of Accel [(Dilute) 8.0 oz. per gallon of water] and turn the unit on to circulate the solution for 5 minutes].
5. **[Drain and] Rinse** all [(cleaned) (treated)] surfaces with fresh water.

Note (important):

- Change cloth, sponge or towels frequently to avoid re-deposition of soil.
- [(Change the solution) (A fresh solution must be prepared) (Prepare a fresh solution)] at least daily or [(more often if use solution) (when use solution)] becomes visibly [(dirty) (soiled) (diluted)].

**To Sanitize Non-Food Contact Surfaces:** Dilute at 8.0 oz. of product per gallon of water (Dilute 1:16).

1. Pre-clean heavily soiled hard non-porous surfaces.
2. Apply Use Solution until thoroughly wet.
3. Let stand for thirty (30) seconds.
4. Wipe surfaces (and let air dry).
5. Not for use on food contact surfaces or on food preparation areas.

**To Sanitize Non-Food Contact Surfaces:** Dilute at 1.0 oz. of product per gallon of water (Dilute 1:128).

1. Pre-clean heavily soiled hard non-porous surfaces.
2. Apply Use Solution until thoroughly wet.
3. Let stand for three (3) minutes.
4. Wipe surfaces (and let air dry).
5. Not for use on food contact surfaces or on food preparation areas.

**For Use as a [General] Cleaner/Degreaser:**

Dilute product at 0.5 - 1.0 oz. of product per gallon of water (1:128 – 1:256). Apply to surfaces. Wipe surfaces (and let air dry).

**For Use as a Deodorizer:**

*{Note to Agency: Text appearing in [ brackets ] or ( parenthesis ) is done to show interchangeable or optional text. Any language which appears between { braces } and is italicized is for administrative purposes only and will NOT appear on final printed label. Variables such as CAPITALIZATION, plurals or singular, bold and italics are optional unless specified in 40 CFR. Listed uses and use sites can be used partially or in their entirety. Underlined text is new. Strike-through text means it has been removed.}*

*{Option 1}*

Dilute at 1 oz. of product per gallon of water (1:128). Apply to hard, non-porous surfaces. Let stand for three (3) minutes. (Wipe surfaces (and let air dry)).

*{Option 2}*

Dilute at 8 oz. of product per gallon of water (1:16). Apply to hard, non-porous surfaces. Let stand for 30 seconds. (Wipe surface (and let air dry)).

*{Allergen Destruction}*

To [clean and] destroy specified allergens: [Set trigger to SPRAY.] Spray, wait 5 minutes, and wipe excess. [Rinse.] Allow to air dry. [If streaking is observed, wipe with a clean, damp [cloth or] paper towel.]

Allergens:

- Cockroach matter -or- particles
- Dust mite matter -or- particles
- Pet dander -or- dog and cat dander

*{Note: the following paragraph is option language}*

Not recommended for use on copper, brass or marble. (Notice to User: Accel (Concentrate) may not be suitable for all items or surfaces. Prolonged exposure to copper, brass, anodized aluminum and some coatings should be avoided. If you are uncertain as to the material composition of your item, confirm with the manufacturer before proceeding or visit the compatibility section on [www.virox.com](http://www.virox.com) for a listing of compatible materials.)

## **STORAGE AND DISPOSAL**

Do not contaminate water, food or feed by storage or disposal.

### **PESTICIDE STORAGE**

Do not reuse empty container (unless refilling from a larger container of the same product according to the refilling directions outlined previously). (Keep from freezing).

### **PESTICIDE DISPOSAL**

Pesticide wastes are acutely hazardous. Improper disposal of excess pesticide, spray mixture, or rinsate is a violation of Federal law. If these wastes cannot be disposed of by use according to label instructions, contact your State Pesticide or Environmental Control Agency, or the Hazardous Waste representative at the nearest EPA Regional Office for guidance.

**CONTAINER DISPOSAL** *{Note to reviewer – One or more of the following paragraphs for Container Disposal will be selected, depending on packaging type:}*

**NONREFILLABLE SEALED CONTAINERS:** *{Note to reviewer: Several of our packaging options (including SmartDose and RTD™ Dispensing Systems) are sealed containers or bottles designed to reduce worker exposure to the concentrate. None of these can be triple rinsed because they are closed sealed containers. The following text will be used on these sealed container types:}*

Nonrefillable container. Do not reuse or refill this container. Wrap empty container and put in trash.

**SMALL NONREFILLABLE CONTAINERS:** *{Note to reviewer: The following text will be used on rigid, nonrefillable containers small enough to shake (5 gallons or smaller):}*

Nonrefillable container. Do not reuse or refill this container. Clean container promptly after emptying. Triple rinse as follows: Empty the remaining contents into application equipment or a mix tank and drain for 10 seconds after the flow begins to drip. Fill the container ¼ full with water and recap. Shake for 10 seconds. Pour rinsate into application equipment or a mix tank or store rinsate for later use or disposal. Drain for 10 seconds after the flow begins to drip. Repeat this procedure two more times. Offer for recycling, if available.



*{Note to Agency: Text appearing in [ brackets ] or ( parenthesis ) is done to show interchangeable or optional text. Any language which appears between { braces } and is italicized is for administrative purposes only and will NOT appear on final printed label. Variables such as CAPITALIZATION, plurals or singular, bold and italics are optional unless specified in 40 CFR. Listed uses and use sites can be used partially or in their entirety. Underlined text is new. Strike-through text means it has been removed.}*

**LARGE NONREFILLABLE CONTAINERS:** *{Note to reviewer: One of the following paragraphs will be used on labels for rigid, nonrefillable containers too large to shake (larger than 5 gallons):}*

Nonrefillable container. Do not reuse or refill this container. Clean container promptly after emptying. Triple rinse as follows: Empty the remaining contents into application equipment or a mix tank. Fill the container ¼ full with water. Replace and tighten closures. Tip container on its side and roll it back and forth, ensuring at least one complete revolution, for at least 30 seconds. Stand the container on its end and tip it back and forth several times. Empty the rinsate into application equipment or a mix tank or store rinsate for later use or disposal. Repeat this procedure two more times. Offer for reconditioning, if appropriate.

OR

Nonrefillable container. Do not reuse or refill this container. Clean container promptly after emptying. Pressure rinse as follows: Empty the remaining contents into application equipment or a mix tank and continue to drain for 10 seconds after the flow begins to drip. Hold container upside down over application equipment or a mix tank or collect rinsate for later use or disposal. Insert pressure-rinsing nozzle in the side of the container, and rinse at about 40 PSI for at least 30 seconds. Drain for 10 seconds after the flow begins to drip. Offer for reconditioning, if appropriate.

**REFILLABLE CONTAINERS:** *{Note to reviewer: One of the following paragraphs will be used on labels for refillable containers:}*

Refillable container. Refill this container with (this brand or brand name) pesticide only. Do not reuse this container for any other purpose.

Cleaning the container before final disposal is the responsibility of the person disposing of the container.

Cleaning before refilling is the responsibility of the refiller.

To clean the container prior to final disposal, empty the remaining contents from this container into application equipment or mix tank. Fill the container about 10 percent full with water. Agitate vigorously or recirculate water with the pump for 2 minutes. Pour or pump rinsate into application equipment or rinsate collection system. Repeat this rinsing procedure two more times.

Then offer for recycling if available or puncture and dispose of in a sanitary landfill, or by incineration, or, if allowed by state and local authorities, by burning. If burned, stay out of smoke.

OR

Refillable container. Refill this container with (this brand or brand name) pesticide only. Do not reuse this container for any other purpose.

Pressure rinsing the container before final disposal is the responsibility of the person disposing of the container.

Cleaning before refilling is the responsibility of the refiller.

To clean the container prior to final disposal, empty the remaining contents from this container into application equipment or mix tank. Fill the container about 10 percent full with water. Agitate vigorously or recirculate water with the pump for 2 minutes. Pour or pump rinsate into application equipment or rinsate collection system. Repeat this rinsing procedure two more times.

Then offer for recycling if available or puncture and dispose of in a sanitary landfill, or by incineration, or, if allowed by state and local authorities, by burning. If burned, stay out of smoke.

**ENVIRONMENTAL HAZARDS** *{for containers of 5 gallons or 50 lbs. or more}*

Do not discharge effluent containing this product into lakes, streams, ponds, estuaries, oceans or other waters unless in accordance with the requirements of a National Pollutant Discharge Elimination System (NPDES) permit and the permitting agency has been notified in writing prior to discharge. Do not discharge effluent containing this product to sewer systems without previously notifying the local sewage treatment plant authority. For guidance contact your State Water Board or Regional Office of the EPA.

*{Note to Agency: Text appearing in [ brackets ] or ( parenthesis ) is done to show interchangeable or optional text. Any language which appears between { braces } and is italicized is for administrative purposes only and will NOT appear on final printed label. Variables such as CAPITALIZATION, plurals or singular, bold and italics are optional unless specified in 40 CFR. Listed uses and use sites can be used partially or in their entirety. Underlined text is new. Strike-through text means it has been removed.}*

*{Note to reviewer: Residential and Household use products will ONLY be sold in non-refillables containers of 1 Gallon or less}*

## STORAGE AND DISPOSAL

Store in original container in areas inaccessible to small children. Keep securely closed. Non-refillable container. Do not reuse or refill empty container. Wrap [container] and put in trash

## PRECAUTIONARY STATEMENTS HAZARD TO HUMANS AND DOMESTIC ANIMALS

**CAUTION:** Harmful if swallowed. Causes moderate eye irritation. Avoid contact with eyes or clothing. Wear chemical splash-proof goggles or face shield. Wash thoroughly with soap and water after handling and before eating, drinking, chewing gum, or using tobacco.

### FIRST AID

**IF IN EYES:** Hold eye open and rinse slowly and gently with water for 15-20 minutes. Remove contact lenses, if present, after the first 5 minutes, then continue rinsing eye.

**IF ON SKIN OR CLOTHING:** Take off contaminated clothing. Rinse skin immediately with plenty of water for 15-20 minutes.

**IF SWALLOWED:** Have the person sip a glass of water if able to swallow. Do not induce vomiting unless told to do so by a poison control center or doctor. Do not give anything by mouth to an unconscious person.

**IN CASE OF EMERGENCY, CALL A POISON CONTROL CENTER OR DOCTOR FOR TREATMENT ADVICE.**  
Have the product container or label with you when calling a Poison Control Center or doctor or going in for treatment.

**Note to Physician:** Probable mucosal damage may contraindicate gastric lavage.

*{Note to reviewer: SDS is optional for household use products}*

READ S.D.S BEFORE USING PRODUCT  
(S.D.S is available on line at (S.D.S section) on [www.virox.com](http://www.virox.com))  
(SDS Ref. No. xxxxxxxxxx)

Si no puede leer en ingles, pregunte a su supervisor sobre las instrucciones de uso apropiadas antes de trabajar con este producto.

Manufactured [by] [for]:© 2013 Virox Technologies, Inc., 2770 Coventry Road, Oakville, Ontario L6H 6R1 (All Rights Reserved.)





*{Note to Agency: Text appearing in [ brackets ] or ( parenthesis ) is done to show interchangeable or optional text. Any language which appears between { braces } and is italicized is for administrative purposes only and will NOT appear on final printed label. Variables such as CAPITALIZATION, plurals or singular, bold and italics are optional unless specified in 40 CFR. Listed uses and use sites can be used partially or in their entirety. Underlined text is new. Strike-through text means it has been removed.}*

AHP™ technology and logo's (is) (are) (registered) (trademark) (the property) of Virox Technologies Inc. used under license.

{Note to Agency: Text appearing in [ brackets ] or ( parenthesis ) is done to show interchangeable or optional text. Any language which appears between { braces } and is italicized is for administrative purposes only and will NOT appear on final printed label. Variables such as CAPITALIZATION, plurals or singular, bold and italics are optional unless specified in 40 CFR. Listed uses and use sites can be used partially or in their entirety. Underlined text is new. Strike-through text means it has been removed.}

{List of surface materials, hard non-porous surfaces and use site for use in the **Residential Use** products}

**{List 1: Surface material }**

Chrome  
 Crystal (non-food contact areas)  
 Enamel  
 Fiberglass fixtures  
 Glass  
 Glazed ceramic (non-food contact areas)  
 Glazed porcelain (non-food contact areas)  
 Glazed tile  
 Linoleum  
 Metals [except copper and brass]  
 Mirrors  
 Plastic laminate  
 Plastic surfaces  
 Sealed fiberglass [polyester, vinylester and epoxy resins]  
 Stainless steel  
 Synthetic marble  
 Vinyl

[For use in the kitchen<sup>‡</sup> on counters, sinks, exterior surfaces of appliances, and stovetops. A rinse with potable water is required for food contact surfaces. Do not use on glassware, utensils or dishes. ]

**{List 2:Hard Non-porous surfaces}**

Outer surfaces of air vents	Door [knobs] [handles] [frames]	Oven exterior
Appliances exterior	Exercise equipment	Packing benches
Bathrooms	Exercise mats	Phone cradles
Bathroom fixtures	Exterior of toilet surfaces	Piano keys
[Bathroom] [kitchen <sup>‡</sup> ] faucet	Exterior of pipes	Picnic table
Bathroom doorknobs	Footboards	Plastic laundry basket
Bathtubs	Finished hardwood	Recycling bins
Bed frames	Fixture [(chrome) (stainless steel)]	Refrigerator / Freezer exterior
[Behind and under] counters <sup>‡</sup>	Floor (glazed tile)	Remote controls
[Behind and under] sinks <sup>‡</sup>	Floor (vinyl)	Sealed granite
Blood Pressure monitors	Furniture <sup>‡</sup>	Shelves
Burner trays	Garbage [trash] can [bin]	Shower [door] [curtain] <sup>‡</sup>
Cabinets <sup>‡</sup>	Glazed ceramic tile	Showers [stalls]
Cages	Glazed porcelain tile	Sink [basin]
Cell[ular] – or digital phones	[Hand] railings	Stainless steel surfaces
Chairs <sup>‡</sup> (not including high chairs)	Hard, nonporous surfaces of car	Stereo consoles
Changing tables	[boat] [trailer] interior	Storage bins <sup>‡</sup>
Closets [handles]	Infant cribs	Stool
Computers	[Inside of] drawers	Strollers
Computer keyboards	Grill exterior	Tables
Computer mouse <sup>‡</sup>	Laminated surfaces	Tabletop
Computer peripherals	Lamps	Telephone
Computer screen	Light fixture	Tiled walls
cords	Medicine cabinet	Toilet bowl exterior
Countertop	Metal blinds	Toilet handholds
Cupboard	Metal surfaces	
Desk[s][tops]	Microwave exterior	Toilet rims [seats]
Diaper pails	Patio furniture <sup>‡</sup>	Toys <sup>‡</sup>

*{Note to Agency: Text appearing in [ brackets ] or ( parenthesis ) is done to show interchangeable or optional text. Any language which appears between { braces } and is italicized is for administrative purposes only and will NOT appear on final printed label. Variables such as CAPITALIZATION, plurals or singular, bold and italics are optional unless specified in 40 CFR. Listed uses and use sites can be used partially or in their entirety. Underlined text is new. Strike-through text means it has been removed.}*

Training toilets	Vinyl	Washing machine exterior
Tools	[Washable] walls	Windows
	Wash basins	Work bench
[Bathroom] vanity	Walkers	

± hard, nonporous surfaces of

A potable water rinse is required for food contact surfaces. Do not use on glassware, utensils or dishes.

**{List 3: Residential/Household use sites}**

Basement	Garage	Pet areas
Bathroom	Garbage room	Playroom
Bedroom	Kitchen <sup>‡</sup>	Restroom
Dining room	Laundry room	Storage room
Exercise room	Living room	Tool shed
Family room	Nursery [room]	Washroom

‡Non-food contact surfaces of

**A potable water rinse is required for food contact surfaces. Do not use on glassware, utensils or dishes.**

Note – All surfaces that [potentially] come in contact with food must be rinsed with potable water. Do not use on glassware, utensils, or dishes.

{Note to Agency: Text appearing in [ brackets ] or ( parenthesis ) is done to show interchangeable or optional text. Any language which appears between { braces } and is italicized is for administrative purposes only and will NOT appear on final printed label. Variables such as CAPITALIZATION, plurals or singular, bold and italics are optional unless specified in 40 CFR. Listed uses and use sites can be used partially or in their entirety. Underlined text is new. Strike-through text means it has been removed.}

{Reference Sheet}

# ACCEL™ (CONCENTRATE) DISINFECTANT CLEANER

## REFERENCE SHEET

{possible logos}



[USA Patent #: 6,803,057; “Under license by Virox Technologies Inc.”]

**Active Ingredient:**

<b>Hydrogen Peroxide</b> .....	<b>4.25%</b>
<b>Other Ingredients</b> .....	<b>95.75%</b>
<b>Total</b> .....	<b>100.0%</b>

[See container label for information concerning precautions, directions for use, storage and disposal and environmental hazards.] [Detailed Use Directions and Precautionary Statements are contained on the product label.] [ Read all label directions on the container carefully before using this product.]

When used as directed, this product is highly effective against a wide variety (broad-spectrum) of pathogenic microorganisms (including bacteria, antibiotic-resistant bacteria, \*viruses, fungi, mold and mildew.) At a 1:16 dilution (8 oz. of product per gallon of water), in the presence of 200 ppm hard water, 5% serum load and 5 minute contact time, unless otherwise noted, this product kills the following on hard non-porous inanimate surfaces:

*{Insert Organism Claims from Master Label- appropriate claims will be chosen based on site of use.}*

*{Insert Marketing Claims from Master Label – appropriate claims will be chose based on site of use.}*

*{Note to Agency: Text appearing in [ brackets ] or ( parenthesis ) is done to show interchangeable or optional text. Any language which appears between { braces } and is italicized is for administrative purposes only and will NOT appear on final printed label. Variables such as CAPITALIZATION, plurals or singular, bold and italics are optional unless specified in 40 CFR. Listed uses and use sites can be used partially or in their entirety. Underlined text is new. Strike-through text means it has been removed.}*

*{Note: the following section on summary of claims is optional and might be inserted in a band at the bottom of the label}*

**FUNGICIDAL: 5 MIN. @ 1:16**

**\*VIRUCIDAL: 5 MIN. @ 1:64**

**BACTERICIDAL: 5 MIN. @ 1:16**

**(BROAD-SPECTRUM NON-FOOD CONTACT SANITIZER @ 1:128: 3 MIN.)**

**OR**

**(BROAD-SPECTRUM NON-FOOD CONTACT SANITIZER @ 1:16: 30 SEC.)**

**For Use as a (Daily) (One-Step) Cleaner/Disinfectant:** (Dilute at 8.0 oz. of product per gallon of water (1:16)).

1. Pre-clean heavily soiled areas.
2. Apply Use Solution by (hand pump) coarse trigger sprayer to hard, non-porous environmental surfaces. Spray 6 - 8 inches from surface; making sure to wet surfaces thoroughly.
4. All surfaces must remain wet for five (5) minutes.
4. Wipe surfaces (and let air dry).

*{Or add other appropriate Use Directions from Master Label}*

EPA Reg. No. 74559-4

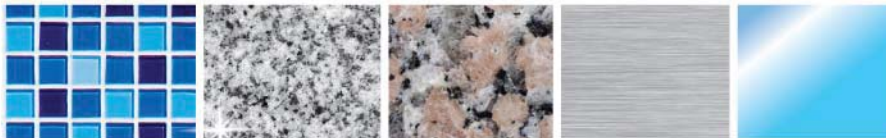
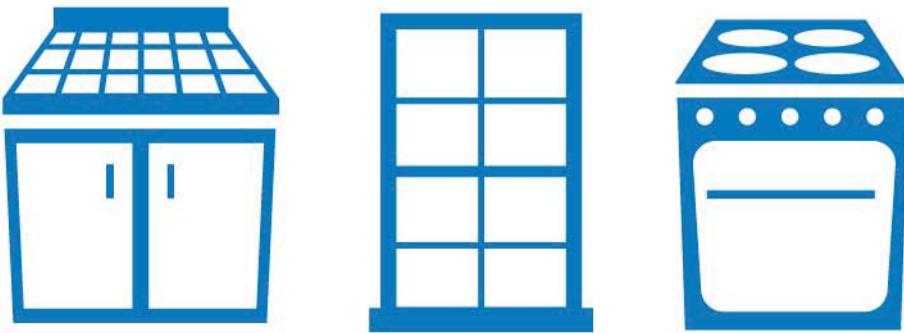
© 2013 Virox Technologies, Inc., 2770 Coventry Road, Oakville, Ontario L6H 6R1 (All Rights Reserved.)

{Note to Agency: Text appearing in [ brackets ] or ( parenthesis ) is done to show interchangeable or optional text. Any language which appears between { braces } and is italicized is for administrative purposes only and will NOT appear on final printed label. Variables such as CAPITALIZATION, plurals or singular, bold and italics are optional unless specified in 40 CFR. Listed uses and use sites can be used partially or in their entirety. Underlined text is new. Strike-through text means it has been removed.}

{Graphic options}



{Note to Agency: Text appearing in [ brackets ] or ( parenthesis ) is done to show interchangeable or optional text. Any language which appears between { braces } and is italicized is for administrative purposes only and will NOT appear on final printed label. Variables such as CAPITALIZATION, plurals or singular, bold and italics are optional unless specified in 40 CFR. Listed uses and use sites can be used partially or in their entirety. Underlined text is new. Strike-through text means it has been removed.}





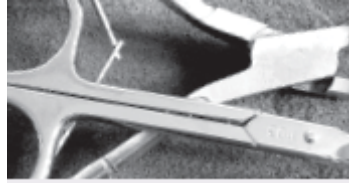
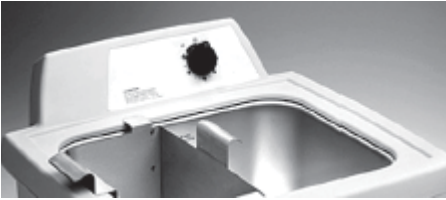
{Note to Agency: Text appearing in [ brackets ] or ( parenthesis ) is done to show interchangeable or optional text. Any language which appears between { braces } and is italicized is for administrative purposes only and will NOT appear on final printed label. Variables such as CAPITALIZATION, plurals or singular, bold and italics are optional unless specified in 40 CFR. Listed uses and use sites can be used partially or in their entirety. Underlined text is new. Strike-through text means it has been removed.}



{Note to Agency: Text appearing in [ brackets ] or ( parenthesis ) is done to show interchangeable or optional text. Any language which appears between { braces } and is italicized is for administrative purposes only and will NOT appear on final printed label. Variables such as CAPITALIZATION, plurals or singular, bold and italics are optional unless specified in 40 CFR. Listed uses and use sites can be used partially or in their entirety. Underlined text is new. Strike-through text means it has been removed.}



{Note to Agency: Text appearing in [ brackets ] or ( parenthesis ) is done to show interchangeable or optional text. Any language which appears between { braces } and is italicized is for administrative purposes only and will NOT appear on final printed label. Variables such as CAPITALIZATION, plurals or singular, bold and italics are optional unless specified in 40 CFR. Listed uses and use sites can be used partially or in their entirety. Underlined text is new. Strike-through text means it has been removed.}



{Note to Agency: Text appearing in [ brackets ] or ( parenthesis ) is done to show interchangeable or optional text. Any language which appears between { braces } and is italicized is for administrative purposes only and will NOT appear on final printed label. Variables such as CAPITALIZATION, plurals or singular, bold and italics are optional unless specified in 40 CFR. Listed uses and use sites can be used partially or in their entirety. Underlined text is new. Strike-through text means it has been removed.}

# Deliberately<sup>®</sup> Different



{Note to Agency: Text appearing in [ brackets ] or ( parenthesis ) is done to show interchangeable or optional text. Any language which appears between { braces } and is italicized is for administrative purposes only and will NOT appear on final printed label. Variables such as CAPITALIZATION, plurals or singular, bold and italics are optional unless specified in 40 CFR. Listed uses and use sites can be used partially or in their entirety. Underlined text is new. Strike-through text means it has been removed.}

{Use solution work place label}

**USE DILUTION OF**

{insert product name here}{xxProduct Brand Namexx}®

One Step Disinfectant Cleaner [& Deodorizer]  
[\*Virucidal], [Bactericidal], [Fungicidal], [Sanitizer]

**This bottle contains dilution level (Check one)**

- 1:16 Disinfection**
- 1:64 Virucidal [(Note: This dilution is not bactericidal or fungicidal)]**
- 1:128 Sanitizing [(Note: This dilution is not \*virucidal, bactericidal or fungicidal)]**

**KEEP OUT OF REACH OF CHILDREN.  
CAUTION**

**NOT FOR RESALE**

**See label on original container for complete directions for use and additional information.**

**DISINFECTION USE DIRECTIONS:** Pre-clean heavily soiled surfaces. Apply 1:16 dilution to hard non-porous [environmental] surfaces. Allow to remain wet for 5 minutes. Wipe or let air dry.

**[USE DIRECTION TO KILL VIRUSES:** Pre-clean heavily soiled areas. Apply 1:64 dilution to hard non-porous [environmental] surfaces. Allow to remain wet for 5 minutes, Wipe or let air dry.]

**[TO SANITIZE NON-FOOD CONTACT SURFACES:** Pre-clean heavily soiled areas. Apply 1:128 dilution to hard non-porous [environmental] surfaces. Allow to remain wet for 3 minutes, Wipe or let air dry.]

**ALWAYS RINSE BOTTLE AND AIR DRY THOROUGHLY BEFORE REFILLING.  
THIS BOTTLE SHOULD NOT BE USED WITH ANY OTHER PRODUCT.**

**The product in this container is diluted as directed on the antimicrobial product label by the end-user. Follow the directions for use on the antimicrobial label when applying this product.**

**HAZARD RATING**

HMIS/NFPA	USE DILUTION 1:16	4=Very High
0	Health	3=High
0	Flammability	2=Moderate
0	Reactivity	1=Slight
		0=Insignificant

**Questions? Comments/ (1-800-387-7578)**