

June 26, 2007

No Mess
Use Indoors or Outdoors
Kills The Ant Colony (except Pharaohs,
Harvester and Fire Ants)

GOURMET LIQUID ANT BAIT
[Honeydew¹ Formula

¹ Honeydew refers to the excretions of plant sucking insects that may be used as food by ants] (optional)

Kills Roaches & Common Household Ants
Including Argentine and Carpenter Ants

This product will not control Pharaohs,
Harvester or Fire Ants

Active Ingredient:

Disodium Octaborate Tetrahydrate 1.00%

Inert Ingredients: 99.00%

Total 100.00%

CAUTION
KEEP OUT OF REACH OF
CHILDREN

Net Contents: .75 (22.2ml), 32 oz, 1
Gallon, or 2.5 Gallon

MANUFACTURED BY:
INNOVATIVE PEST CONTROL
PRODUCTS (IPCP)
8885 SW 7th Street
Boca Raton, Florida 33433 USA

EPA Reg. No. 73766-2
EPA Est. No. 81944-GA-001 or
41580-FL-001 or 81184-FL-001

(insert #) Ant & Roach Café RTU Prefilled
Bait Stations

PRECAUTIONARY STATEMENTS
ENVIRONMENTAL HAZARDS

Do not apply directly to water or to areas where surface water is present or to intertidal areas below the mean high water mark. Do not contaminate water when disposing of equipment wash water or rinsate.

STORAGE AND DISPOSAL

Do not contaminate water, food or feed by storage or disposal of this product.

Storage: Store product in original container in a cool dry place out of reach of children. Do not allow product to freeze.

Disposal: If empty: Do not reuse this container. Place in trash or offer for recycling if available. If partly filled: Call your local solid waste agency or 1-800-CLEANUP for disposal instructions. Never place unused product down any indoor or outdoor drain.

DIRECTIONS FOR USE

It is a violation of federal law to use this product in a manner inconsistent with its labeling

Do not contaminate food, feed or foodstuffs

Place baits in areas inaccessible to children and pets.

To control ants and roaches use indoors or outdoors near homes, apartments, condominiums, schools, hospitals, restaurants, grocery stores, food processing plants, boats, cruise ships, institutional and commercial buildings, nursing homes, hotels and warehouses.

Gourmet Liquid Ant Bait may be used at full strength, diluted with distilled water or other food grade liquid 1:1 to make bait containing .5% active ingredient. Bait may be used in Ant Café,

Ant & Roach Café RTU, KmAntPro or other similar bait stations that are sold separately.

Ant & Roach Café RTU bait station Instructions: 1. To activate Ant & Roach Café RTU Bait Station, place station on a flat surface with the cone facing up. If cone is filled with liquid, move station from side to side rapidly and liquid will leave the cone. 2. With a scissor cut the top of the cone, so that the top of the remaining cone is level with top of surrounding circular surface. 3. Place bait station according to label directions. (Optional: illustrations of bait station activation)

Place the bait station on or near ant activity. Place stations under food cabinets, sinks, stoves, refrigerators, food storage areas, attics, garages, basements, storage areas, closets. Place on exterior windowsills and in doorways to help prevent entry of ants. Some bait stations may be designed to be affixed to a wall, hung on pipes or branches, anchored in the ground or placed on a flat surface. When using bait stations, wash hands thoroughly before handling to remove any odors that may be repellent to ants, i.e. tobacco, garlic, chemicals/ cleaners.

OPEN PLACEMENT METHOD NOT TO BE USED IN CALIFORNIA

Gourmet Liquid ant Bait can be used to make small, pea sized placements and or long thin lines in areas inaccessible to children and pets, where ants are a problem
Listed ants are attracted to and will feed on Gourmet Liquid Ant Bait until they die. The bait is designed to work slowly and sufficient bait should be made available for at least 14 days of continuous feeding. The ants will return to their nests after consuming the bait and will feed their young and the queen destroying the colony.

Repeat placement of the bait until satisfactory control has been achieved.

Do not use sprays, foggers or any chemicals or cleaners near the bait containers or placements. This may contaminate the bait and cause the insects to cease feeding.

Notice:

By using this product, user or buyer accepts the following Conditions. **Disclaimer of Warranties:** To the extent consistent with applicable law, IPCP makes no other warranties, express or implied, of merchantability or of fitness for a particular purpose or

73766-2

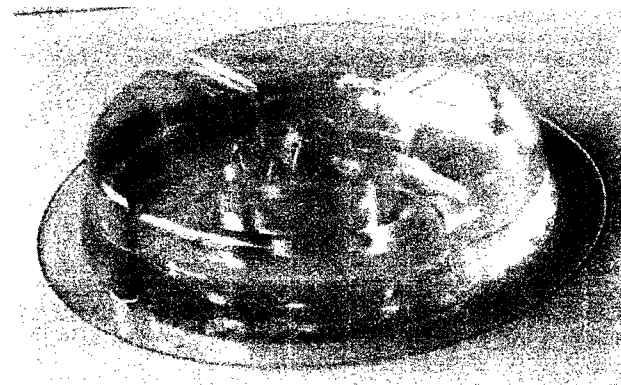
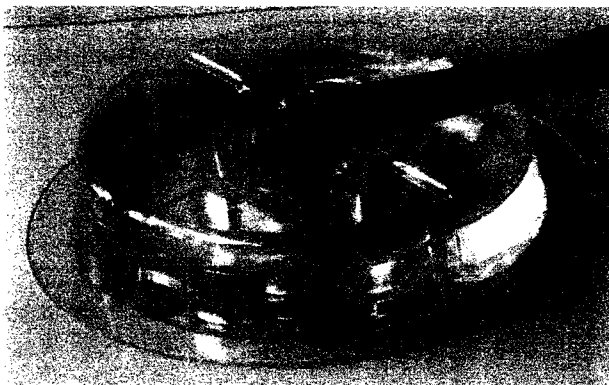
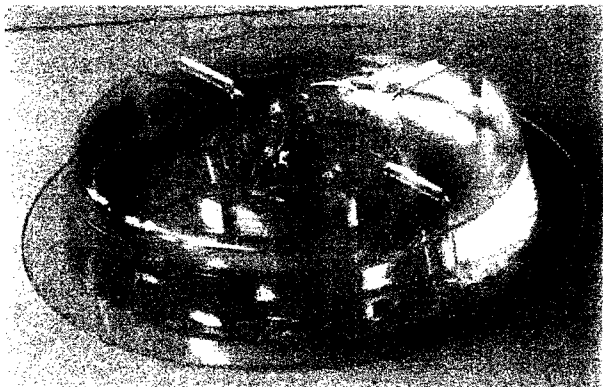
07/31/2007

1/3

See page 2 for stamp

otherwise, that extend beyond the statements made on this label. No agent of IPCP is authorized to make any warranties beyond those contained herein or to modify the warranties contained herein. To the extent consistent with applicable law, IPCP disclaims any liability whatsoever for special, incidental or consequential damages resulting from the use or handling of this product.

ACCEPTED
JUL 31 2007
Under the Federal Insecticide,
Fungicide, and Rodenticide Act,
as amended, for the pesticide
registered under
EPA Reg. No. 73766-2



Gourmet Liquid Ant Bait
Unit Package Label

Gourmet Liquid Ant Bait

Active Ingredient:

Disodium Octaborate Tetrahydrate	1.00%
<u>Other Ingredients</u>	<u>99.00%</u>
Total	100.00%

CAUTION

KEEP OUT OF REACH OF CHILDREN

Sold by: Innovative Pest Control Products
EPA Reg. # 73766-2
EPA Est. # 81184-FL-001

Contents: 0.75 fluid oz. (22.2ml)
See accompanying package label for additional directions and precautions
Lot #