



UNITED STATES ENVIRONMENTAL PROTECTION AGENCY
WASHINGTON, DC 20460

**OFFICE OF CHEMICAL SAFETY
AND POLLUTION PREVENTION**

November 29, 2022

Lucas Blevins
Chemical and Regulatory Manager
1257 Bedford Avenue
North Kansas City, MO 64116

Subject: Label Amendment – add Directions for Use for a version of the metal can bait station with a ground stake attached to the bottom
Product Name: InVict™ AB Bait Station
EPA Registration Number: 73079-13
Application Date: March 18, 2021
Decision Number: 584985

Dear Mr. Blevins:

The amended label referred to above, submitted in connection with registration under the Federal Insecticide, Fungicide, and Rodenticide Act (FIFRA), as amended, is acceptable. This approval does not affect any conditions that were previously imposed on this registration. You continue to be subject to existing conditions on your registration and any deadlines connected with them.

A stamped copy of your labeling is enclosed for your records. This labeling supersedes all previously accepted labeling. You must submit one copy of the final printed labeling before you release the product for shipment with the new labeling. In accordance with 40 CFR 152.130(c), you may distribute or sell this product under the previously approved labeling for 18 months from the date of this letter. After 18 months, you may only distribute or sell this product if it bears this new revised labeling or subsequently approved labeling. “To distribute or sell” is defined under FIFRA section 2(gg) and its implementing regulation at 40 CFR 152.3.

Should you wish to add/retain a reference to the company’s website on your label, then please be aware that the website becomes labeling under FIFRA and is subject to review by the Agency. If the website is false or misleading, the product would be misbranded and unlawful to sell or distribute under FIFRA section 12(a)(1)(E). 40 CFR 156.10(a)(5) lists examples of statements EPA may consider false or misleading. In addition, regardless of whether a website is referenced on your product’s label, claims made on the website may not substantially differ from those claims approved through the registration process. Therefore, should the Agency find or if it is brought to our attention that a website contains false or misleading statements or claims substantially differing from the EPA approved registration, the website will be referred to the EPA’s Office of Enforcement and Compliance.

Page 2 of 2
EPA Reg. No. 73079-13
Decision No. 584985

Your release for shipment of the product constitutes acceptance of these conditions. If these conditions are not complied with, the registration will be subject to cancellation in accordance with FIFRA section 6.

If you have any questions, please contact Joseph Belsky at 202-566-2495 or at belsky.joseph@epa.gov.

Sincerely,

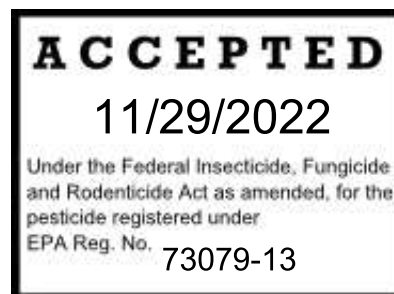
A handwritten signature in blue ink, appearing to read "Gene Benbow".

Gene Benbow, Product Manager 7
Invertebrate & Vertebrate Branch 3
Registration Division (7505P)
Office of Pesticide Programs

NOTE:

Bold italicized text is information for the reader and not part of the label.

[Bracketed information is optional text.] Text separated by / denotes and / or options.



Black PVC Bait Station

InVict™ AB Bait Station

[Kills Roaches / Silverfish / Ants Listed]

Active Ingredient: Abamectin B1.....0.05%
 Other Ingredients:.....99.95%
 Total:.....100.00%

EPA Reg. No.: 73079-13
 EPA Est. No.: (as applicable)
 [Circled letter is first letter of lot number] ***used if more than one EPA Est. No. is on the printed label***
 2/4/6/8/10/12 [Child Resistant]
 Stations/Bait Stations
 [Net Wt. 0.07 oz (2 g) each]

Total Net Wt. 0.14/0.28/0.42/0.56/0.7/0.84 oz. (4/8/12/16/20/24 g)

Manufactured/Distributed by/for:

Company Name and Address (***as applicable***)

[Questions, Comments or Medical Information?

Call _____/Web _____]

[© XXXX]

**DO NOT ALLOW CHILDREN OR PETS TO PLAY WITH BAITS
CAUTION**

PRECAUTIONARY STATEMENTS

Hazards to Humans and Domestic Animals: CAUTION: Causes moderate eye irritation. Avoid contact with skin, eyes or clothing. Wash hands thoroughly with soap and water after use and before eating, drinking, chewing gum, using tobacco or using the toilet.

ENVIRONMENTAL HAZARDS

To protect the environment, do not allow bait to enter or run off into storm drains, drainage ditches, gutters or surface waters.

First Aid

If in Eyes: -Hold eye open and rinse slowly and gently with water for 15-20 minutes.

-Remove contact lenses, if present, after the first five minutes, then continue rinsing.

-Call a poison control center or doctor for treatment advice.

Have the product or label with you when calling a Poison Control Center or doctor or going for treatment. In case of emergency, for additional information call

800 858 7378 / 800-799-7302.

[See First Aid and Precautionary Statements on Front/Back/Left/Right/Side/Top/Bottom Panel]

NOTE:

Bold italicized text is information for the reader and not part of the label.

[Bracketed information is optional text.] Text separated by / denotes and / or options.

[NOTICE: Buyer assumes all responsibility for safety and use not in accordance with directions.]

[Pictograms: Ant/Roach/Silverfish/Bait Station/Suggested Placement]

[How It Works:]

- [Bait attracts foraging worker ants.]
- [Ants enter bait station and take food back to the colony.]
- [Ants share the bait with other ants, killing the queen and the colony.]
- [A reduction in ant activity should occur within 3-7 days after bait placement.]
- [Roaches / silverfish eat the bait and return to the nest and die.]

DIRECTIONS FOR USE

It is a violation of federal law to use this product in a manner inconsistent with its labeling.

Kills roaches, silverfish, and ants, including acrobat, allegheny, argentine, big-headed, cornfield, crazy, ghost, little black, odorous house, pavement, pharaoh, pyramid, thief and white-footed ants (excludes fire, carpenter and harvester ants).

For use in and around homes, apartments, commercial, industrial, municipal, institutional, research, recreational, health care, educational, daycare, hospitality and agricultural buildings and other man-made structures, garages, transport vehicles, sewers, animal research facilities, and food service, storage, handling and processing establishments.

1. Remove bait from package and break bait stations apart.
2. [Peel label off of adhesive sticker on the back of the station.]
3. Place / stick stations label side down where pests are seen or pest activity is suspected to occur.
4. Do not place on food preparation surfaces when food is being handled or on utensils that are used for food preparation.

Remove other sources of food, like crumbs, sugar and grease spots. Common areas to place baits include: along baseboards, in corners of rooms and cabinets, on countertops, under and behind appliances, under sinks, around pipes and water sources, in pantry, on window sills and around doorways, near garbage cans, and along pest trails.

[Helpful Tips:]

- [Do not place bait stations where insecticide has recently been sprayed, as pests may avoid the bait stations]
- [For best results, all X bait stations should be used at once.]
- [For large areas or heavy infestations, additional bait stations are recommended.]
- [Replace bait stations once most of the bait has been eaten, or at least every three months to keep pests from coming back.]

NOTE:

Bold italicized text is information for the reader and not part of the label.

[Bracketed information is optional text.] Text separated by / denotes and / or options.

Food Processing and Handling Establishments: Food areas include serving areas while the establishment is in operation, areas for receiving, storing, packing, and preparation, and edible waste storage and enclosed processing systems. Do not contaminate food and feedstuffs. Use as instructed above.

STORAGE AND DISPOSAL

Do not contaminate water, food or feed by storage or disposal.

Pesticide Storage: Store in a dry place, below 130 °F. Do not store where children or animals may gain access.

Container Handling and Disposal: If empty: Non-refillable container. Do not reuse this container. Place in trash or offer for recycling if available. **If partly filled:** Call your local solid waste agency for disposal instructions.

[Warranty Limitations and Disclaimer

To the extent consistent with applicable law, seller makes no warranty expressed or implied, concerning the use of this product other than as indicated on the label. Buyer accepts this material subject to these terms, and assumes all risk of usage and handling except when used or handled in accordance with this label. To the extent consistent with applicable law, there are no expressed or implied warranties of merchantability or fitness for any particular purpose, except as specifically stated herein. To the extent consistent with applicable law, manufacturer shall not be liable for any consequential damages based on the use of the product.]

NOTE:

Bold italicized text is information for the reader and not part of the label.

[Bracketed information is optional text.] Text separated by / denotes and / or options.

Individual Black PVC Bait Station Label

InVict™ AB Bait Station

Active Ingredient: Abamectin B1....0.05%

Other Ingredients:.....99.95%

Total:.....100.00%

EPA Reg. No.: 73079-13

EPA Est. No.: (as applicable)

[Circled letter is first letter of lot number]
***used if more than one EPA Est. No. is on
the printed label***

Net Wt: 0.07 oz (2 g)

[Manufactured/Distributed by/for:

Company Name and Address] (***as applicable***)

[Questions, Comments or Medical Information?

Call _____/Web _____]

[© XXXX]

**DO NOT ALLOW CHILDREN OR PETS TO PLAY WITH THE BAITS
CAUTION**

See outer package for additional Precautions and First Aid, and complete Directions for Use.

[This side down]

[Date bait placed: / /]

[Replace 3 months after placement]

[Not labeled for individual sale.]

NOTE:

Bold italicized text is information for the reader and not part of the label.

[Bracketed information is optional text.] Text separated by / denotes and / or options.

OPTIONAL MARKETING CLAIMS to Appear on Any Panel of Carton Label and May Appear on Individual Bait Station Label

GENERAL CLAIMS

[Derived from Soil Microbes]
[Contains Abamectin]
[Contains no peanut products]
For Indoor Use Only
[Ready-to-Use Bait]
[Multiple [food] attractants]
[Contains sweet / sugar, oil / grease and protein]
[Contains sweet / sugar and oil / grease [attractants]]
[Contains sweet / sugar and protein [attractants]]
[Very low odor [formula]]
[Guaranteed to work or your money back]
[Made / Formulated in [the] USA]
[[X] Child Resistant [Stations/Bait Stations]]
[No Mess Bait / Formula]

ANT CLAIMS

[Kills Listed Ants]
[Kills [Common / Household] Ants Listed]
[Kills listed sweet / sugar and grease / protein eating ants]
[Kills listed sweet, grease, and protein eating ants]
[Uses 4 food sources to kill listed ants]
[Kills the queen]
[Kills the colony]
[Kills the queen and the colony]
[Kills the listed ants you see and the ones you don't]
[Kills listed ants where they hide / breed]
[Attracts listed [foraging / scout / worker] ants]
[Ants begin feeding within 30 minutes]
[Starts killing worker ants in 24 hours]
[Kills the ant nest/colony in 3-7 days]
[Guaranteed to kill the colony or your money back]
[Use [all year] to control/prevent [infestations of] listed ants]

End Black PVC Bait Station

NOTE:

Bold italicized text is information for the reader and not part of the label.

[Bracketed information is optional text.] Text separated by / denotes and / or options.

Metal Can Bait Station/Metal Can Bait Station with Stake

InVict™ AB Bait Station

[Kills Ants Listed]

Active Ingredient: Abamectin B1.....0.05%	EPA Reg. No.: 73079-13
Other Ingredients:.....99.95%	EPA Est. No.: (as applicable)
Total:.....100.00%	[Circled letter is first letter of lot number]

used if more than one EPA Est. No. is on the printed label

2/3/4/6/8/10/12/14 [Child Resistant]
Stations/Bait Stations/Bait Stations with
Ground Stakes/Bait Stakes
[Net Wt. 0.11/0.14/0.18/0.21/ oz (3/4/5/6 g)
each]

Total Net Wt. 0.22/0.28/0.32/0.33/0.36/0.42/0.44/0.53/0.54/0.56/0.63/0.66/0.72/0.84/
0.85/0.88/1.06/1.08/1.1/1.12/1.26/1.32/1.4/1.44/1.54/1.68/1.8/1.96/2.1/2.16/2.52/2.94 oz.
(6/8/9/10/12/15/16/18/20/24/30/32/36/40/42/48/50/56/60/70/72/84 g)

Manufactured/Distributed by/for:

Company Name and Address (*as applicable*)

[Questions, Comments or Medical Information?

Call _____/Web _____]

[© XXXX]

**DO NOT ALLOW CHILDREN OR PETS TO PLAY WITH BAITS
CAUTION**

PRECAUTIONARY STATEMENTS

Hazards to Humans and Domestic Animals: CAUTION: Causes moderate eye irritation. Avoid contact with skin, eyes or clothing. Wash hands thoroughly with soap and water after use and before eating, drinking, chewing gum, using tobacco or using the toilet.

ENVIRONMENTAL HAZARDS

To protect the environment, do not allow bait to enter or run off into storm drains, drainage ditches, gutters or surface waters.

[See First Aid and Precautionary Statements on Front/Back/Left/Right/Side/Top/Bottom Panel]

NOTE:

Bold italicized text is information for the reader and not part of the label.

[Bracketed information is optional text.] Text separated by / denotes and / or options.

First Aid:

If in Eyes: -Hold eye open and rinse slowly and gently with water for 15-20 minutes.

-Remove contact lenses, if present, after the first five minutes, then continue rinsing.

-Call a poison control center or doctor for treatment advice.

Have the product or label with you when calling a Poison Control Center or doctor or going for treatment. In case of emergency, for additional information call **800 858 7378 / 800-799-7302**.

[NOTICE: Buyer assumes all responsibility for safety and use not in accordance with directions.]

[How It Works:]

-[Bait attracts foraging worker ants.]

-[Ants enter bait station and take food back to the colony.]

-[Ants share the bait with other ants, killing the queen and the colony.]

-[A reduction in ant activity should occur within 3-7 days after bait placement.]

DIRECTIONS FOR USE

It is a violation of federal law to use this product in a manner inconsistent with its labeling.

Kills ants, including acrobat, allegheny, argentine, big-headed, cornfield, crazy, ghost, little black, odorous house, pavement, pharaoh, pyramid, thief and white-footed ants (excludes fire, carpenter and harvester ants).

Directions for Standalone Metal Can Bait Station

For use in and around homes, apartments, commercial, industrial, municipal, institutional, research, recreational, health care, educational, daycare, hospitality and agricultural buildings and other man-made structures, garages, transport vehicles, sewers, animal research facilities, and food service, storage, handling and processing establishments.

1. Remove bait from package.
2. Punch in semi-perforated holes.
3. Place stations where ants are seen or ant activity is suspected to occur.
4. Do not place on food preparation surfaces when food is being handled or on utensils that are used for food preparation.

Remove other sources of food, like crumbs, sugar and grease spots. Common areas to place baits include: along baseboards, in corners of rooms and cabinets, on countertops, under and behind appliances, under sinks, around pipes and water sources, in pantry, on window sills and around doorways, near garbage cans, and along ant trails. For lawn and garden, place along trails and near nests. Space stations 10-20 feet apart.

NOTE:

Bold italicized text is information for the reader and not part of the label.

[Bracketed information is optional text.] Text separated by / denotes and / or options.

Food Processing and Handling Establishments: Food areas include serving areas while the establishment is in operation, areas for receiving, storing, packing, and preparation, and edible waste storage and enclosed processing systems. Do not contaminate food and feedstuffs. Use as instructed above.

Directions for Metal Can Bait Station with Stake

For [outdoor][exterior] use around homes, apartments, commercial, industrial, municipal, institutional, research, recreational, health care, educational, daycare, hospitality and agricultural buildings and other man-made structures, garages, sewers, and animal research facilities.

1. Remove [pre-filled] [bait] stakes from package.
2. Punch in semi-perforated holes.
3. Place [bait station] [station] [bait stake] outdoors into soft ground by pushing firmly into ground with your hands until bottom of bait station contacts the ground. Do not use foot or tool.
4. Place stations where ants are seen or ant activity is suspected to occur outdoors [such as [around [the outside of your home] / [home perimeter] / [ornamentals] / [flower gardens] / [patios] / [porches] / [decks] / [landscape beds] / [trash areas] / [garages]] / [in [and near] potted plants]].
5. Place [bait] stakes in [soft] ground every 10-20 feet [in areas such as [around [the outside of your home] / [home perimeter] / [ornamentals] / [flower gardens] / [patios] / [porches] / [decks] / [landscape beds] / [trash areas] / [garages]] / [in [and near] potted plants]].
6. [For best results, do not place stations/stakes directly on ant trails. Place 1-2 inches away from visible trails of listed ants.]
7. Monitor for ant activity but do not interfere with ants or [bait] stakes.

End Specific Directions for Metal Can Bait Station with Stake.

[Helpful Tips:]

- [Do not place bait stations where insecticide has recently been sprayed, as pests may avoid the bait stations]
- [For best results, all X bait stations should be used at once.]
- [For large areas or heavy infestations, additional bait stations are recommended.]
- [Replace bait stations once most of the bait has been eaten, or at least every 30 days to keep ants from coming back.]

NOTE:

Bold italicized text is information for the reader and not part of the label.

[Bracketed information is optional text.] Text separated by / denotes and / or options.

STORAGE AND DISPOSAL

Do not contaminate water, food or feed by storage or disposal.

Pesticide Storage: Store in a dry place, below 130 °F. Do not store where children or animals may gain access.

Container Handling and Disposal: If empty: Non-refillable container. Do not reuse this container. Place in trash or offer for recycling if available. **If partly filled:** Call your local solid waste agency for disposal instructions.

[Warranty Limitations and Disclaimer

To the extent consistent with applicable law, seller makes no warranty expressed or implied, concerning the use of this product other than as indicated on the label. Buyer accepts this material subject to these terms, and assumes all risk of usage and handling except when used or handled in accordance with this label. To the extent consistent with applicable law, there are no expressed or implied warranties of merchantability or fitness for any particular purpose, except as specifically stated herein. To the extent consistent with applicable law, manufacturer shall not be liable for any consequential damages based on the use of the product.]

NOTE:

Bold italicized text is information for the reader and not part of the label.

[Bracketed information is optional text.] Text separated by / denotes and / or options.

Individual Metal Can Bait Station/Metal Can Bait Station with Stake Label

InVict™ AB Bait Station

Active Ingredient: Abamectin B1....0.05%

EPA Reg. No.: 73079-13

Other Ingredients:.....99.95%

EPA Est. No.: (as applicable)

Total:.....100.00%

[Circled letter is first letter of lot number]
***used if more than one EPA Est. No. is on
the printed label***

Net Wt. 0.11/0.14/0.18/0.21 oz (3/4/5/6 g)

Manufactured/Distributed by/for:

Company Name and Address (*as applicable*)

[Questions, Comments or Medical Information?

Call _____/Web _____]

[© XXXX]

**DO NOT ALLOW CHILDREN OR PETS TO PLAY WITH THE BAIT
CAUTION**

To open station, punch in semi-perforated holes.

See outer package for additional Precautions and First Aid, and complete Directions for Use.

[This side down]

[Date bait placed: / /]

[Replace 30 days after placement]

[Not labeled for individual sale.]

NOTE:

Bold italicized text is information for the reader and not part of the label.

[Bracketed information is optional text.] Text separated by / denotes and / or options.

OPTIONAL MARKETING CLAIMS to Appear on Any Panel of Carton Label and May Appear on Individual Bait Station Label

GENERAL CLAIMS

[Derived from Soil Microbes]

[Contains Abamectin]

[Contains no peanut products]

[For Indoor and Outdoor Use] ***Not applicable to Metal Can Bait Station with Stake***

[For Indoor Use] ***Not applicable to Metal Can Bait Station with Stake***

[For Outdoor Use [Only]]

[Ready-to-Use Bait]

[Multiple [food] attractants]

[Contains sweet / sugar, oil / grease, and protein]

[Contains sweet / sugar and oil / grease [attractants]]

[Contains sweet / sugar and protein [attractants]]

[Very low odor [formula]]

[Guaranteed to work or your money back]

[Made / Formulated in [the] USA]

[] Child Resistant [Stations/Bait Stations]]

[No mess bait / formula]

[2/3/4/6/8/10/12/14 [Child-Resistant] Bait Stations / Stakes]

ANT CLAIMS

[Kills Listed Ants]

[Kills [Common / Household] Ants Listed]

[Kills listed sweet / sugar and grease / protein eating ants]

[Kills listed sweet, grease, and protein eating ants]

[Uses 4 food sources to kill listed ants]

[Kills the queen]

[Kills the colony]

[Kills the queen and the colony]

[Kills the listed ants you see and the ones you don't]

[Kills listed ants where they hide / breed]

[Attracts listed [foraging / scout / worker] ants]

[Ants begin feeding within 30 minutes]

[Starts killing worker ants in 24 hours]

[Kills the ant nest / colony in 3-7 days]

[Guaranteed to kill the colony or your money back]

[Use [all year] to control / prevent [infestations of] listed ants]

Optional - For Bait Station with Stake Only

[Contains X stakes – enough to treat the exterior of average home [perimeter] [up to Y times]]

[One [pack] [box] [package] treats the [exterior] perimeter of an average home]

NOTE:

Bold italicized text is information for the reader and not part of the label.

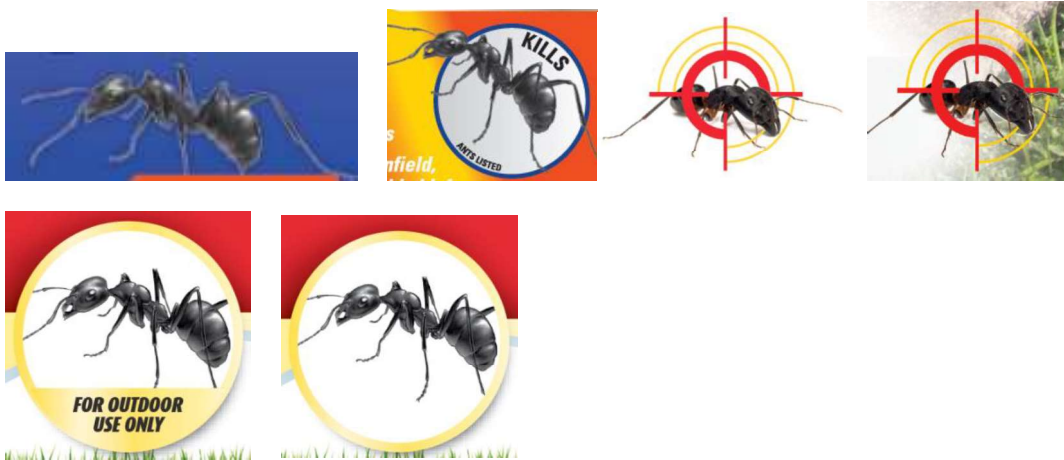
[Bracketed information is optional text.] Text separated by / denotes and / or options.

[Stakes stay where you put them]

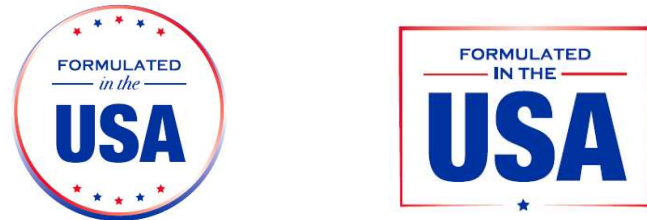
End Metal Can Bait Station

***Pictograms specific to Supplemental Distributor EPA Company No. 3095
Pictograms that depict a product name must correctly depict the registered
market/brand name on the printed label***

*Optional - To Appear on Any Panel of Carton Label and May Appear on Individual Station
Label:*

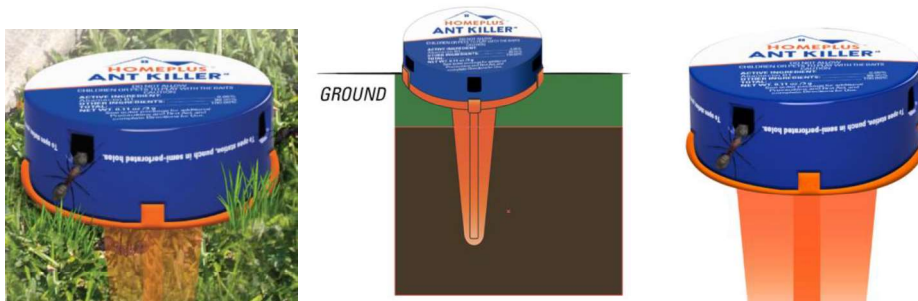


Or similar text/pictogram, to appear on any panel



Or similar text/pictogram, to appear on any panel.

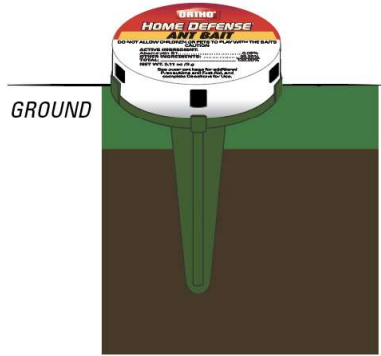
Optional - For Bait Stations with Stakes



NOTE:

Bold italicized text is information for the reader and not part of the label.

[Bracketed information is optional text.] Text separated by / denotes and / or options.



Or similar text/pictogram with or without ants crawling, to appear on any panel



[Suggested [Outdoor] [Stake] Bait Stations [with] [Stake]/Stations Placement]

Or similar text/pictogram, to appear on any panel

NOTE:

Bold italicized text is information for the reader and not part of the label.

[Bracketed information is optional text.] Text separated by / denotes and / or options.

Optional - For Standalone Bait Stations



Or similar text/pictogram showing bait station with/without ants crawling, to appear on any panel.



[Suggested [Indoor] Bait Stations/Stations Placement]



[Suggested [Outdoor] Bait Stations/Stations Placement]

Or similar text/pictogram, to appear on any panel.