

72956-1

11-02-2011

1/3

UNITED STATES ENVIRONMENTAL PROTECTION AGENCY
WASHINGTON, D.C. 20460

NOV 2 2011



Office of Pesticide Programs

Nice-Pak Products, Inc.
c/o Delta Analytical Corporation
12510 Prosperity Drive, Suite 160
Silver Spring, MD 20904

Attention: Cristina Griffin, Agent

Subject: Sani-Towel
EPA Registration No. 72956-1
Notification Dated October 3, 2011

This will acknowledge receipt of your notification, submitted under the provisions of FIFRA Section 3(c)(9).

Proposed Notification

- To add optional claims to the product label

General Comments

Based on a review of the submitted material, the following comments apply.


The Notification is in compliance with PR Notice 98-10 and is acceptable. This information has been made a part of your file.

If you have any questions concerning this letter, please contact Martha Terry at (703) 308-6217.

Sincerely,

Marshall Swindell
Product Manager (33)
Regulatory Management Branch 1
Antimicrobials Division (7510P)

2
13

	United States Environmental Protection Agency Washington, DC 20460	<input type="checkbox"/> Registration <input type="checkbox"/> Amendment <input checked="" type="checkbox"/> Other	OPP Identifier Number NOTIF
--	---	--	---

Application for Pesticide - Section I

1. Company/Product Number 72956-1	2. EPA Product Manager Velma Noble	3. Proposed Classification <input type="checkbox"/> None <input type="checkbox"/> Restricted
4. Company/Product (Name) Nice-Pak Products, Inc. / Sani-Towel	PM# 31	
5. Name and Address of Applicant (Include ZIP Code) Nice-Pak Products, Inc. c/o Delta Analytical Corp. 12510 Prosperity Drive, Suite 160 Silver Spring, MD 20904 <input type="checkbox"/> Check if this is a new address		6. Expedited Review. In accordance with FIFRA Section 3(c)(3)(b)(i), my product is similar or identical in composition and labeling to: EPA Reg. No. _____ Product Name _____

Section - II

Amendment - Explain below
 Resubmission in response to Agency letter dated _____
 Notification - Explain below.

Final printed labels in response to Agency letter dated _____
 "Me Too" Application.
 Other - explain below.

Explanation: Use additional page(s) if necessary. (For section I and Section II.)
Notification per PR Notice 98-10 to add optional claims

This notification is consistent with the provisions of PR Notice 98-10 and EPA regulations at 40 CFR 152.46, and no other changes have been made to the labeling or the confidential statement of formula of this product. I understand that it is a violation of 18 U.S.C. Sec. 1001 to willfully make any false statement to EPA. I further understand that if this notification is not consistent with the terms of PR Notice 98-10 and 40 CFR 152.46, this product may be in violation of FIFRA and I may be subject to enforcement action and penalties under sections 12 and 14 of FIFRA.

Section - III

1. Material this Product will be Packaged in:

Child-Resistant Packaging <input type="checkbox"/> Yes* <input type="checkbox"/> No	Unit Packaging <input type="checkbox"/> Yes <input type="checkbox"/> No If "Yes," Unit Package wgt. No. per container	Water Soluble Packaging <input type="checkbox"/> Yes <input type="checkbox"/> No If "Yes," Unit Package wgt. No. per container	2. Type of Container <input type="checkbox"/> Metal <input type="checkbox"/> Plastic <input type="checkbox"/> Glass <input type="checkbox"/> Paper <input type="checkbox"/> Other (Specify) _____
---	--	---	--

* Certification must be submitted.

3. Location of Net Contents Information <input type="checkbox"/> Label <input type="checkbox"/> Container	4. Size(s) of Retail Container	5. Location of Label Direction <input type="checkbox"/> On Label <input type="checkbox"/> On Labeling accompanying product
--	--------------------------------	--

6. Manner In Which Label Is Affixed to Product
 Lithograph Paper glued Other _____
 Stenciled

Section - IV

1. Contact Point (Complete items directly below for identification of individual to be contacted, if necessary, to process this application.)

Name Cristina Griffin	Title Agent for Nice-Pak Products, Inc.	Telephone No. (Include Area Code) 301-680-7971
---------------------------------	---	--

Certification		6. Date Application Received (Stamped)
I certify that the statements I have made on this form and all attachments thereto are true, accurate and complete. I acknowledge that any kind of knowingly false or misleading statement may be punishable by fine or imprisonment or both under applicable law.		
2. Signature 	3. Title Agent for Nice-Pak Products, Inc.	
4. Typed Name Cristina Griffin	5. Date October 3, 2011	



October 3, 2011

Document Processing Desk (NOTIF)
Office of Pesticide Programs (7504P)
Environmental Protection Agency
One Potomac Yard
2777 South Crystal Drive, Room S-4900
Arlington VA 22202

Attn: Velma Noble, PM 31/Drusilla Copeland

RE: Notification per PR Notice 98-10 to add optional claims
Product: Sani-Towel, EPA Reg. No. 72956-1
Company: Nice-Pak Products, Inc.

Dear Ms. Noble and Ms. Copeland:

On behalf of Nice-Pak Products, Inc., I am submitting a notification per PR Notice 98-10 to add optional claims for the product Sani-Towel, EPA Reg. No. 72956-1. This product is a toxicity Category IV food contact surface sanitizer (no rinse required). All added claims are on pages 5-7 and are highlighted.

Please contact me right away if you have any questions or comments regarding this submission:
301-680-7971 or cgriffin@delta-ac.com.

Enclosures

- EPA form 8570-1
- 1 copy of the revised label (additions highlighted)

Sincerely,

Cristina Griffin
Agent for Nice-Pak Products, Inc.

Enclosures

cc: David Jones, PDI

4
13

SANI-TOWEL®

- [ABN EPA approval 2/4/09: Sani Professional Brand Table Turners Sanitizing Wipe[s]]
- [ABN EPA approval 2/4/09: Professional Sani Brand Table Turners Sanitizing Wipe[s]]
- [ABN EPA approval 2/4/09: Professional Sani Brand Sani Cart Wipe[s]]
- [ABN EPA approval 2/4/09: Sani Brand Kids Zone Sanitizing Wipe[s]]
- [ABN EPA approval 2/4/09: Sani Brand Kids Places 'n Spaces Sanitizing Wipe[s]]
- [ABN EPA approval 7/22/09: Sani Professional Brand No-Rinse Sani Cart Wipe[s]]
- [ABN EPA approval 7/22/09: Sani Professional Brand No-Rinse Surface Sanitizing Wipe[s]]
- [ABN EPA approval 2/14/06: No Rinse Sani-Surface Sanitizing and Cleaning Wipe[s]]
- [ABN EPA approval 2/14/06: No Rinse Sani-Surface Shopping Cart Sanitizing Wipe[s]]

**[NO RINSE HARD, NON-POROUS SURFACE SANITIZING TOWEL]
[FOR RESIDENTIAL USE] [FOR HOME USE]**

ACTIVE INGREDIENTS

n-Alkyl(C₁₂67%, C₁₄25%, C₁₆7%, C₈, C₁₀, C₁₈1%) Dimethyl Benzyl

Ammonium Chloride0.0175%

OTHER INGREDIENTS.....99.9825%

TOTAL100.0000%

[Does not include the weight of the [cloth] [towelette] [or] [wipe]]

KEEP OUT OF REACH OF CHILDREN

NET CONTENTS [and/or Net Wt.] _____oz (g) [or lbs. (kg)]
 _____# OF CLOTHS [WIPES] [SIZE of each cloth or wipe]

EPA Reg. No. 72956-1

EPA Est. No.9480-NY-1 [or EPA Est. No. A=9480-NY-1, B=72956-WI-1, C=72956-AR-1 *Alpha character will precede batch number on product container*]

[Made in USA]

[Manufactured [by:] [for:]
 Nice-Pak Products, Inc.
 Two Nice-Pak Park
 Orangeburg, NY 10962-1376
 [For information call: [phone number to be inserted]]

Statements in brackets [] are optional or instructional. The terms "wipe(s)", "towel(s)", "towelette(s)", and "cloth(s)" can be used interchangeably throughout except for the product primary brand name which can be changed only by notification or amendment.

5
13

[Use one of the following as applicable to type of container.]

[To Dispense TOWELETTES] [or WIPES] [or TOWELS] [or CLOTHS]:

Remove lid [and discard inner seal] [from container or canister.] Find center of wipe roll, remove first wipe for use, twist corner of next wipe into a point and thread through the hole in the [container or] canister lid. Pull through about one inch. Replace lid. Dispense remaining wipes as necessary by pulling out at an angle. When not in use keep [center cap of] lid closed to prevent moisture loss.

TRAVEL PACK:

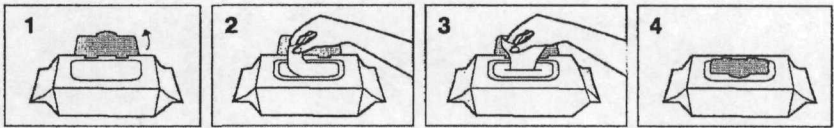
Peel back label slowly. Pull out wipes as needed and reseal label. Unfold wipe.

PACKET/PACKAGE:

Tear open packet [package]. Unfold wipe.

To Dispense [or To use] [SOLO® PAK] [or soft pack] [or product]:

Open package lid. Completely remove inner seal. Pull out wipe [at an angle][towards you]. [The next wipe pops up automatically.] Snap lid closed after use to retain moisture.



DO NOT FLUSH • STORE AT ROOM TEMPERATURE
DISPOSE OF USED WIPES IN TRASH RECEPTACLE • KEEP SOLO®
LID CLOSED WHEN NOT IN USE
SOLO® is a registered trademark of Nice Pak Products Inc.

REFILL PACKET:

This refill package is made for use only in a [product name] container; do not use this product in a container for another product. Do not use the refill wipes in a container that is cracked or broken. Discard the cracked or broken container in accordance with the container disposal instructions on the label.

[Option 1]

Remove [entire] lid from container. Tear open refill [package] at [notch] [mark] [arrow] and place [wipe] roll in empty container. Follow information on container to dispense wipes.

[Option 2]

Remove [entire] lid from container. Tear open refill [package] at [notch] [mark] [arrow]. Place [entire] refill package of wipes in empty container. Follow information on container to dispense wipes.

GENERIC:

Open lid. Pull out wipe. Close lid tightly.

Statements in brackets [] are optional or instructional. The terms "wipe(s)", "towel(s)", "towelette(s)", and "cloth(s)" can be used interchangeably throughout except for the product primary brand name which can be changed only by notification or amendment.

6
13

Bucket [or pail or container]

1. Remove the lid from the [pail or bucket or container.]
2. Press open the dispenser at center of the lid.
3. Open the refill pack.
4. Locate the first wipe at the center of the roll.
5. Feed the first wipe through the dispensing orifice.
6. Reapply the lid to the [pail or bucket or container.]
7. Dispense the wipe.

For the refills:

1. Remove the lid from the [pail or bucket or container.]
2. Remove the empty refill pack material from the [pail or bucket or container.]
3. Press open the dispenser at center of the lid.
4. Open the refill pack.
5. Locate the first wipe at the center of the roll.
6. Feed the first wipe through the dispensing orifice.
7. Reapply the lid to the pail.
8. Dispense the wipe.

GENERIC:

Open lid. Pull out wipe. Close lid tightly.

[Product is ready for use, no mixing or measuring required.]

DIRECTIONS FOR USE:

It is violation of Federal law to use this product in a manner inconsistent with its labeling.

[CLEANING] [AND] [DEODORIZING]: Wipe surface with towelette until clean. Let air dry.

FOOD CONTACT SURFACES

For use on pre-cleaned hard, non-porous food preparation surfaces. Surfaces include: [Use one or more of the following:] tables, food preparation tables, counter tops, cabinets, sinks, microwaves, ranges, refrigerators and freezers, [the following uses must be preceded by the words: "outside surface[s] of " or "exterior surface[s] of ":] food mixers, bread machines, coffee machines, griddles, toasters, toaster ovens, chargrills, broilers, cooking surfaces and backsplashes, ovens, juicers, [add the following after the list of surfaces:] and other similar hard, non-porous food contact surfaces except for those excluded by this label.+

Sanitizing food contact surfaces: Use first towel to pre-clean and remove heavy soil. Use second towel to sanitize. Wipe enough for treated area to remain visibly wet for a minimum of 60 seconds. Let air dry. No rinsing required.

+ Do not use to sanitize glassware, cookware, and eating utensils.

Statements in brackets [] are optional or instructional. The terms "wipe(s)", "towel(s)", "towelette(s)", and "cloth(s)" can be used interchangeably throughout except for the product primary brand name which can be changed only by notification or amendment.

7
13

NON-FOOD CONTACT SURFACES

[Thoroughly pre-clean if surface is visibly soiled.]

For use on pre-cleaned hard non-porous surfaces. Surfaces include: [Use one or more of the following:] Dining tables, chairs, display cabinets, garbage cans, infant high chairs, booster seats, floors, sinks, drain boards, faucets, toilet seats and rims, vanities, towel dispensers, railings, infant-changing tables, bath tubs, showers, hampers, glazed tiled walls, telephones, playpens, cribs, diaper pails, doorknobs, shopping carts [add the following after the list of surfaces:] and other similar hard, non-porous food contact surfaces except for those excluded by this label.

[Cleaning and] **Sanitizing non-food contact surfaces:** For heavily soiled items, clean prior to sanitizing. Use towel to sanitize surface. Wipe enough for treated surfaces to remain visibly wet for 5 minutes. Use additional towels as needed to keep entire surface area wet for a full 5 minutes. Let air dry. No rinsing required.

99.9% effective in 5 minutes against Staphylococcus aureus (ATCC #6538), Salmonella enterica (ATCC #10708), and Klebsiella pneumoniae (ATCC #4352) [in the presence of organic soil (5% blood serum)].

[Use storage/disposal statement A for hard canisters/dispensers. Use storage/disposal statement B for travel pack or SOLO or [refill] packet/package.]

STORAGE AND DISPOSAL

[Statement A:] For containers [canisters] and refill dispensers:

Storage: Do not store near heat or open flame. When not in use keep center cap of lid closed to prevent moisture loss. **Towelette Disposal:** Do not reuse towelette. Dispose of used towelette in trash. Do not flush in toilet. **Dispenser Disposal:** Do not reuse empty container. Triple rinse and offer for recycling. If recycling is not available, put in trash collection.

[If refillable container is being used, substitute the following: Refill Dispenser Disposal: Triple rinse cracked or broken containers and offer for recycling. If recycling is not available, discard in trash.]

[Statement B:] For packets, SOLO® Pak, travel packs, and [refill] packets [or package]:

Storage: Do not store near heat or open flame. **Towelette Disposal:** Do not reuse towelette. Dispose of used towelette in trash. Do not flush in toilet. **Travel Pack [or Solo® Pak or Refill Packet [or [bulk] package]] Disposal:** Put empty travel pack [or Solo® Pak or refill packet [or packaging]] in trash collection.

Statements in brackets [] are optional or instructional. The terms "wipe(s)", "towel(s)", "towelette(s)", and "cloth(s)" can be used interchangeably throughout except for the product primary brand name which can be changed only by notification or amendment.

F:\shared\labels\PD\172956-1\2011\72956-1 notif label 100311.doc Page 4 of 10 10/3/11

[All below are optional label claims (placement optional), literature and promotional statements]
[If cleaning and/or deodorizing claims used, the cleaning and/or deodorizing directions heading must be used]

99.9% effective against [in killing] common household bacteria
99.999% effective in 60 seconds against Staphylococcus aureus, Escherichia coli and Shigella boydii on
cleaned, hard, non-porous food contact surfaces

A clean [fresh] home starts here

Always ready to use

An easy way to clean[,] [and] [sanitize] [and deodorize] household surfaces

Built-in scrubbing fibers

Clean[,] [and] [sanitize] [and deodorize] any room, any time

Clean[,] [and] [sanitize] [and deodorize] hard non-porous surfaces all over the house [throughout your home]
[easily]

Clean[,] [and] [sanitize] [and deodorize] non-porous surfaces around the house

Clean[,] [and] [sanitize] [and deodorize] surfaces your family touches

Cleans[,] [and] [sanitizes] [and deodorizes] without harsh residue [no rinse required]

Cleans[,] [and] [sanitizes] [and deodorizes] without leaving harsh residue behind [no rinse required]

Cleans[,] [and] [sanitizes] [and deodorizes] with no harsh residue [no rinse required]

Cleans[,] [and] [sanitizes] [and deodorizes] without harsh chemical residue [no rinse required]

Cleans[,] [and] [sanitizes] [and deodorizes] without leaving harsh chemical residue behind [no rinse required]

Cleans[,] [and] sanitizes [and deodorizes] with no harsh chemical residue [no rinse required]

Cleans[,] [and] [sanitizes] [and deodorizes] grocery carts and shopping carts

Cleaning[,] [and] [sanitizing] [and deodorizing] towel [or cloth]

Cleaning[,] [and] [sanitizing] [and deodorizing] wipes for food preparation surfaces

Cleans[,] [and] [sanitizes] [and deodorizes] hard non-porous surfaces after food preparation

Cleans hard to remove stains

Cleans[,] [and deodorizes] and kills common household bacteria

Cloth

Decorative, stay moist package

[Deodorizes]

Deodorize [without leaving harsh [chemical] residue behind] [no rinse required]

Easily clean[,] [and] [sanitize] [and deodorize] hard non-porous surfaces around the house

Easy and effective kitchen sanitizing

Easy flip top lid

Effective [effectively] [in] sanitizing [sanitizes] non-porous kitchen surfaces

Effective daily cleaner

Effective on non-porous food prep surfaces

[Effectively] neutralizes 99.9% of common household bacteria

Effectively neutralizes 99.9% of common household bacteria that live in your house

Eliminates odors

Eradicates 99.9% of common household bacteria

Everyday, every room sanitizer

Fast and easy way to clean[,] [and] [sanitize] [and deodorize] around the house

Food preparation surfaces

Food-contact surface wipes

Food-contact surfaces

Food-preparation surface sanitizer(s) [wipes]

For a clean home

For use in supermarkets, grocery stores, retail stores and mass merchants

For use on cleaned hard, non-porous food contact surfaces in kitchens

For use on hard, non-porous non-food contact surfaces as a one step sanitizer

For use on hard non-porous surfaces in kitchens [and /or bathrooms]

For use on pre-cleaned hard, non-porous food contact surfaces

For use to sanitize shopping carts

For your toughest kitchen and bathroom messes

Statements in brackets [] are optional or instructional. The terms "wipe(s)", "towel(s)", "towelette(s)", and "cloth(s)" can be used interchangeably throughout except for the product primary brand name which can be changed only by notification or amendment.

9
13

[Fragrance free]
Great for on-the-go cleaning
Great on-the-go sanitizer
Hard non-porous surface cleaning[,] [and] [sanitizing] [and deodorizing] [kitchen sanitizing] made easy
Heavy duty cleaner [cleaning]
Ideal for cleaning[,] [and] [sanitizing] [and deodorizing] family spaces
Ideal for sanitizing [family] [household] surfaces: highchairs, booster seats, strollers, car seats, cribs, [dining] tables, toy chests, bathroom [and] kitchen surfaces
Ideal for sanitizing food [prep] or [contact] surfaces
Ideal for sanitizing hard non-porous food contact surfaces (tabletops, countertops, sinks, kitchen appliance exteriors, glazed tilework)
Ideal for shopping cart handles, baby seats, high chairs
Keep your house clean[,] [and] [sanitized] [and deodorized]
Kills 99.9% of common household bacteria
Kills 99.999% of Staphylococcus aureus (ATCC #6538), Escherichia coli (ATCC #11229) and Shigella boydii (ATCC #9207) in 60 seconds on pre-cleaned [hard, non-porous] food contact surfaces
Kills odor causing bacteria
Kitchen sanitizer(s) that need no rinsing
Kitchen sanitizing wipes
Kitchen surface [sanitizing] wipes [towels]
Kitchen surface sanitizer(s)
Kitchen surfaces
Large, thick, and quilted for everyday cleaning
Leaves a shine every time
Leaves no streaks
Multi-room sanitizer [sanitizing] cleaner
No mixing or measuring required
No streaking
No rinse food contact surface sanitizer
No-rinse kitchen [surface] sanitizer(s)
No-rinse kitchen sanitizing wipes
No-rinse sanitizer(s) for food contact [food prep] [kitchen] surfaces
No-rinse sanitizing for kitchen surfaces
No-rinse sanitizing wipes
Not for sale in [insert state]
Odor [neutralizer] [neutralizing action]
One-step no rinse sanitizer for hard, non-porous non-food contact surfaces
On-the-go sanitizer
Pre-measured, pre-moistened sanitizing towels for use on [cleaned] hard, non-porous [food contact] surfaces
Pre-moistened cleaning[,] [and] [sanitizing] [and deodorizing] towel [or cloth]
Pre-soaked [sturdy] cloth [or towel]
Pre-sprayed [sturdy] cloth [or towel]
Pre-sprayed scrubbing towels
Pre-wetted [towel or cloth]
Quilted pre-sprayed towels
Ready to use. Just pull, wipe and discard
Reduce harmful bacteria* in your home [**Specific bacteria listed on label*]
Specially formulated for effective cleaning[,] [and] [sanitizing] [and deodorizing]
Surface wipes
Removes tough stains
Sanitizer [sanitizing] home [house] [household] [surface] cleaner
Sanitizes as it cleans food prep surfaces
Sanitizes hard non-porous food prep [kitchen] surfaces [easily]
Sanitizes surfaces that come in contact with food without requiring a rinse

Statements in brackets [] are optional or instructional. The terms "wipe(s)", "towel(s)", "towelette(s)", and "cloth(s)" can be used interchangeably throughout except for the product primary brand name which can be changed only by notification or amendment.

10
13

Sanitizing clean-ups for family areas [spaces]
Sanitizing hard non-porous food prep [kitchen] surfaces is easy
Sanitizing wipes for family areas
Sanitizing wipes for family contact [food contact] [food-preparation] surfaces
Sanitizing wipes for hard non-porous surfaces
Sanitizing wipes for surfaces families touch
Scrubbing house [household] [surface] cleaner
Scrubbing [No-Rinse] [Sanitizing] Wipes
The fast, easy and effective way to sanitize [and deodorize] cleaned[,] hard non-porous surfaces
The sanitizing wipes that make cleanups easy
Towel
Use in the kitchen
Versatile sanitizer [sanitizing] cleaner
Wipes for food-contact surfaces
Wipes out 99.9% of common household bacteria
Wipes out 99.9% of bacteria

Specifically designed for sanitizing cleaned hard, non-porous surfaces throughout the household.
[99.9%] effective in 5 minutes against common household bacteria: Staphylococcus aureus, Salmonella enterica, and Klebsiella pneumoniae. Common uses include: doorknobs, chairs, toilet seats and rims, railings, infant high chairs, infant – changing tables, diaper pails, playpens, booster seats, strollers, cribs, and toy chests.

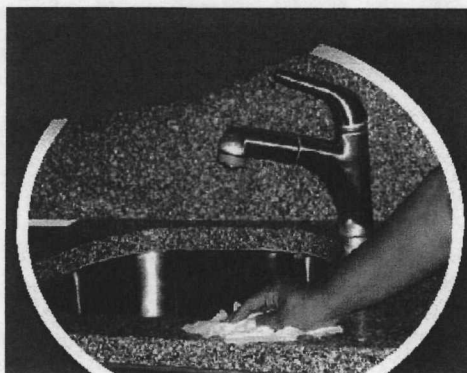
Specifically designed for sanitizing cleaned hard, non-porous surface areas where food is normally prepared.
99.999% effective in 60 seconds against common Kitchen bacteria: Staphylococcus aureus, Escherichia coli (E coli), Salmonella enterica, Shigella boydii, and Klebsiella pneumoniae in the presence of organic soil (heavy soil must be pre-cleaned first). Common uses include: kitchen counters, tables, cooking surfaces, sinks, shopping cart handles, baby seats, and high chairs.

Statements in brackets [] are optional or instructional. The terms “wipe(s)”, “towel(s)”, “towelette(s)”, and “cloth(s)” can be used interchangeably throughout except for the product primary brand name which can be changed only by notification or amendment.

11
13

OPTIONAL GRAPHICS

[The following graphics and statements are optional.
They may be placed anywhere on label/container.]



Kitchen Surfaces



Telephones



Toilet Seats



Highchairs/Cribs
Toy Chests



Changing Tables

Statements in brackets [] are optional or instructional. The terms "wipe(s)", "towel(s)", "towelette(s)", and "cloth(s)" can be used interchangeably throughout except for the product primary brand name which can be changed only by notification or amendment.

12
13

OPTIONAL GRAPHICS

[The following graphics and statements are optional.
They may be placed anywhere on label/container.]

**NOT A BABY WIPE
NOT FOR USE ON SKIN**

[This graphic shows use of the towel dispenser.]

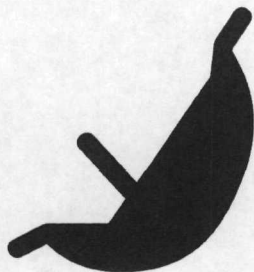


Statements in brackets [] are optional or instructional. The terms "wipe(s)", "towel(s)", "towelette(s)", and "cloth(s)" can be used interchangeably throughout except for the product primary brand name which can be changed only by notification or amendment.

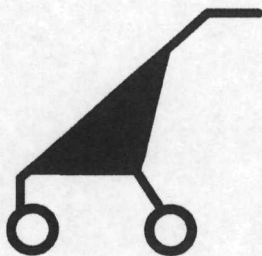
13
13

OPTIONAL GRAPHICS

[The following graphics and statements are optional.
They may be placed anywhere on label/container.]



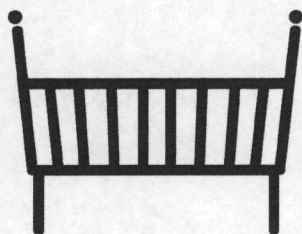
Car seat



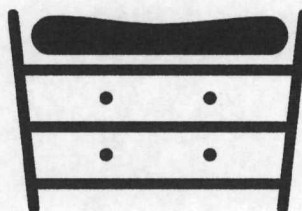
Stroller



Highchair



Crib



Changing table

Statements in brackets [] are optional or instructional. The terms "wipe(s)", "towel(s)", "towelette(s)", and "cloth(s)" can be used interchangeably throughout except for the product primary brand name which can be changed only by notification or amendment.